

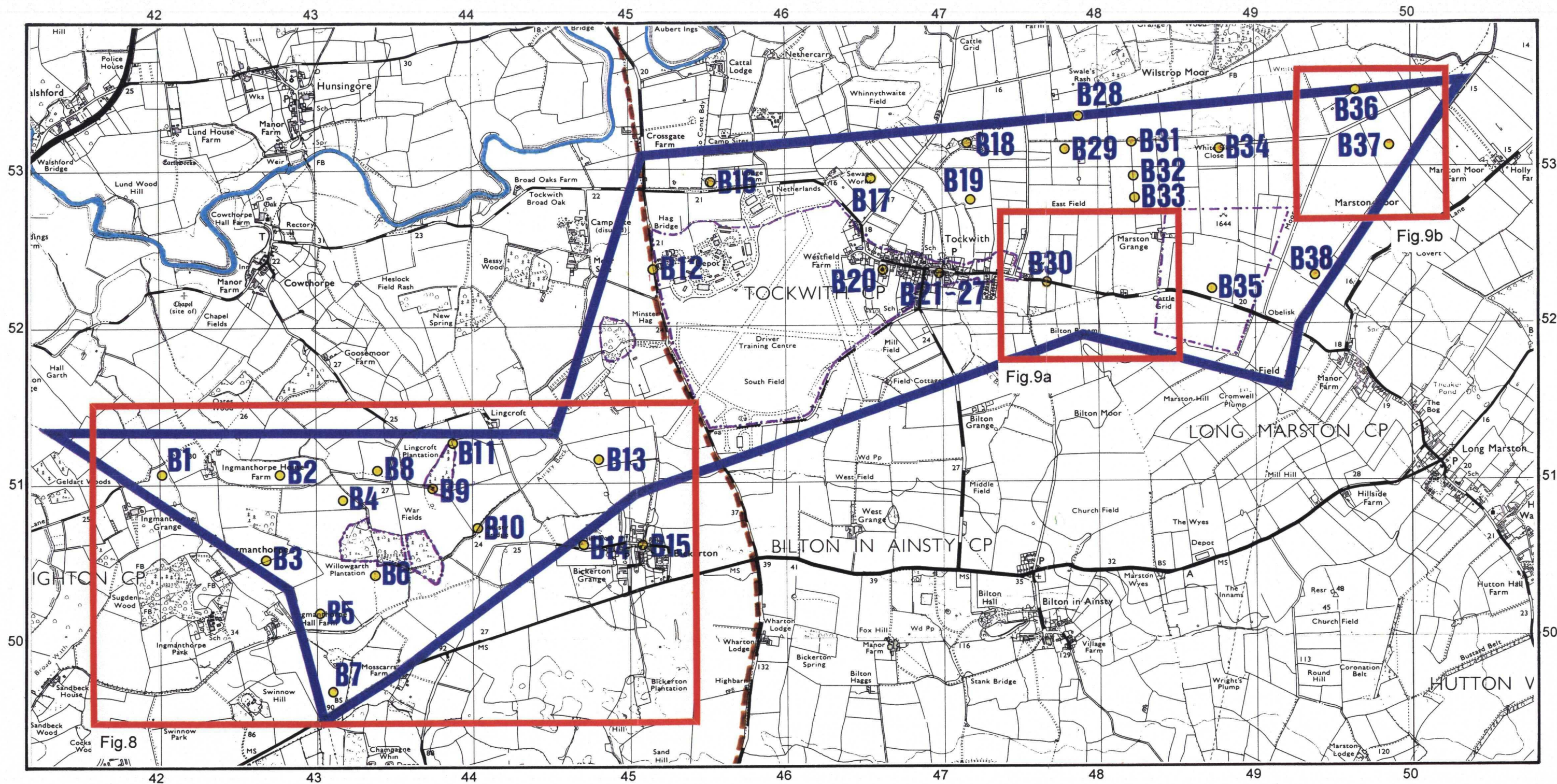
8. Corridor B (Figs 1, 7-9)

8.1 Corridor B is about 9km long. It runs from Ingmanthorpe in the west to Marston Moor in the east, covering an area of about 12km² in the parishes of Kirk Deighton, Tockwith, Bilton-in-Ainsty and Long Marston. The corridor occupies the flat terrace on the south-eastern side of the Nidd valley and rarely rises over 30m OD. The principal village in the corridor is Tockwith, which is largely excluded, along with the area of the former airfield (now a depot and driver training centre) to its west. The other large exclusion zone nominally covers the site of the Battle of Marston Moor in the south-eastern part of the corridor.

8.2 Thirty eight sites have been reported, the relative importance of which is shown in Table 2. Ten of these sites fall within an exclusion zone or well outside the corridor area. The sites, mainly cropmark sites, tend to be concentrated in the vicinity of Ingmanthorpe and to the east of Tockwith.

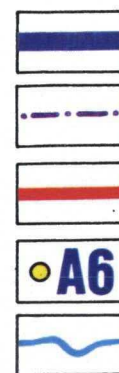
8.3 The Corridor B sites

(see Volume 2 Site Directory for full details)

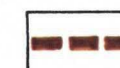


Key

- Corridor Boundary
- Exclusion Zone
- Inset Detailed Area
- Site Reference
- Rivers and Drainage



Line of Roman Road



Reproduced from the 1975-81 Ordnance Survey 1:25,000 mapping with the permission of the Controller of Her Majesty's Stationery Office © Crown Copyright. Unauthorised reproduction infringes Crown Copyright and may lead to prosecution or civil proceedings.

West Yorkshire Archaeology Service; Licence number 076406.

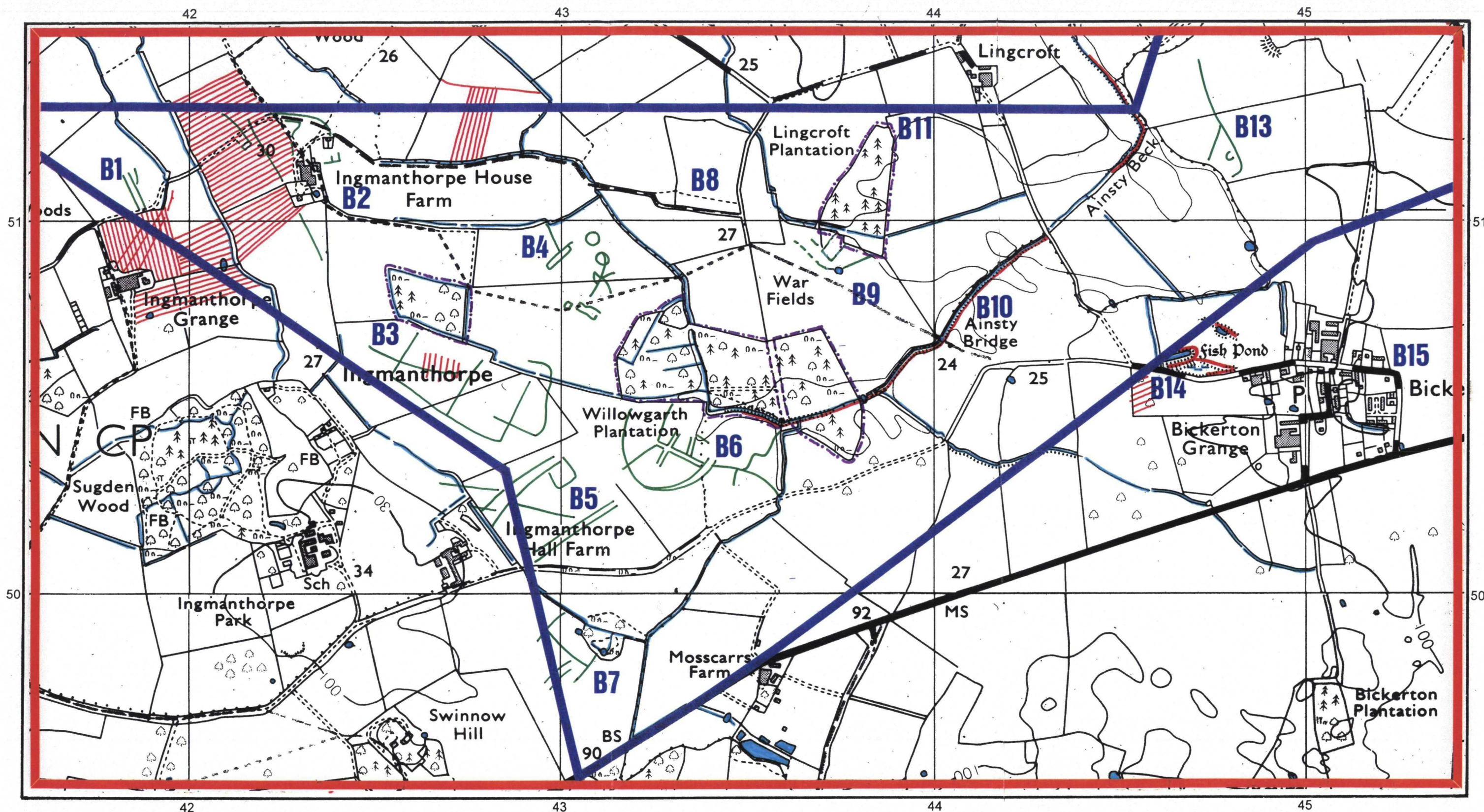
Figure 7: Corridor B - Site location map.

Proposed Overhead Powerlines-North Yorkshire, Archaeological Assessment.

Scale 1:25,000



0 2km



Key

Corridor Boundary

Exclusion Zone

Inset Detailed Area

Site Reference

Rivers and Drainage

Earthworks

Cropmarks

Line of Roman Road

Reproduced from the 1975-81 Ordnance Survey 1:25,000 mapping with the permission of the Controller of Her Majesty's Stationery Office © Crown Copyright. Unauthorised reproduction infringes Crown Copyright and may lead to prosecution or civil proceedings.

West Yorkshire Archaeology Service; Licence number 076406.

Figure 8: Corridor B - inset details showing the nature and extent of known cropmark anomalies and extant earthwork features.

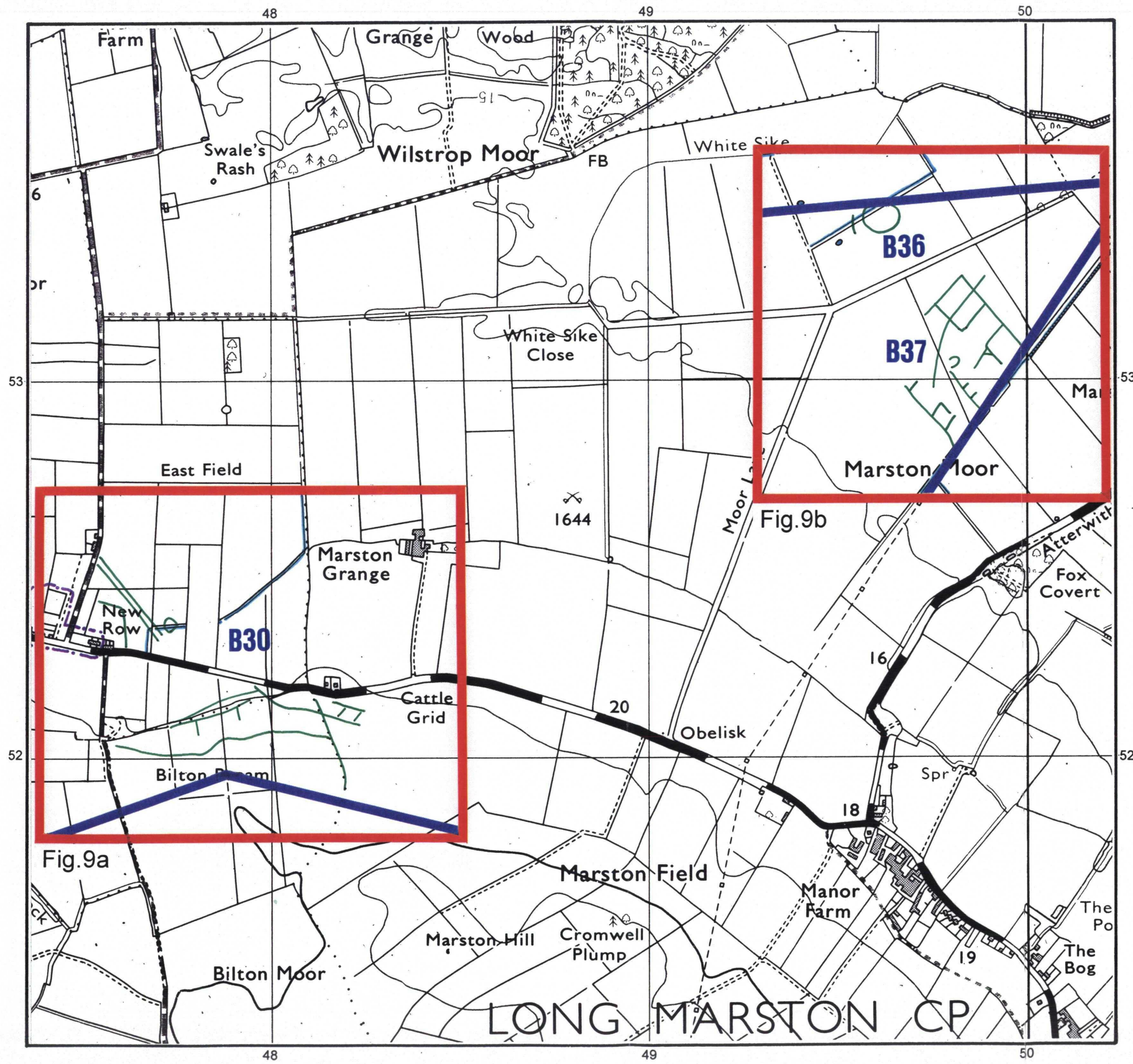


Figure 9: Corridor B - inset details showing the nature and extent of known cropmark anomalies and extant earthwork features.

Proposed Overhead Powerlines-North Yorkshire, Archaeological Assessment.

Key

- Corridor Boundary
- Exclusion Zone
- Inset Detailed Area
- Site Reference
- Rivers and Drainage
- Earthworks
- Cropmarks
- Line of Roman Road

Reproduced from the 1975-81 Ordnance Survey 1:25,000 mapping with the permission of the Controller of Her Majesty's Stationery Office © Crown Copyright. Unauthorised reproduction infringes Crown Copyright and may lead to prosecution or civil proceedings.

West Yorkshire Archaeology Service; Licence number 076406.

Scale 1:10,000



9. Corridor C (Figs 1, 10 and 11)

9.1 Corridor C is nearly 6km long and runs between Sykes House Farm in the west and Healaugh Grange in the east, within the parishes of Walton, Wighill, Bilton-in-Ainsty and Healaugh. There are no large settlements within the corridor area, although the villages of Walton and Wighill both lie on its southern periphery. The corridor covers a total area of about 6.5km², though about 80% of this lies to the east of Walton where the corridor is up to 2km wide. The area is comprised mainly of flat arable land between 20-30m OD. A few small islands of woodland form exclusion zones within the corridor.

9.2 Twenty three sites have been reported, the relative importance of which is shown in Table 3. Eight of these sites lie outside the corridor or within exclusion zones. Because of its central position, the setting of Wighill church has been considered in both Corridors C and D. The majority of the unexcluded sites are cropmark sites of unknown date and function. Apart from the Rudgate Roman road, the only site of known potential, actually within the corridor, is Symingtonwaite Priory. There are, however, a number of notable sites within the setting of the corridor that have been considered.

9.3 The Corridor C sites

(see Volume 2 Site Directory for full details)

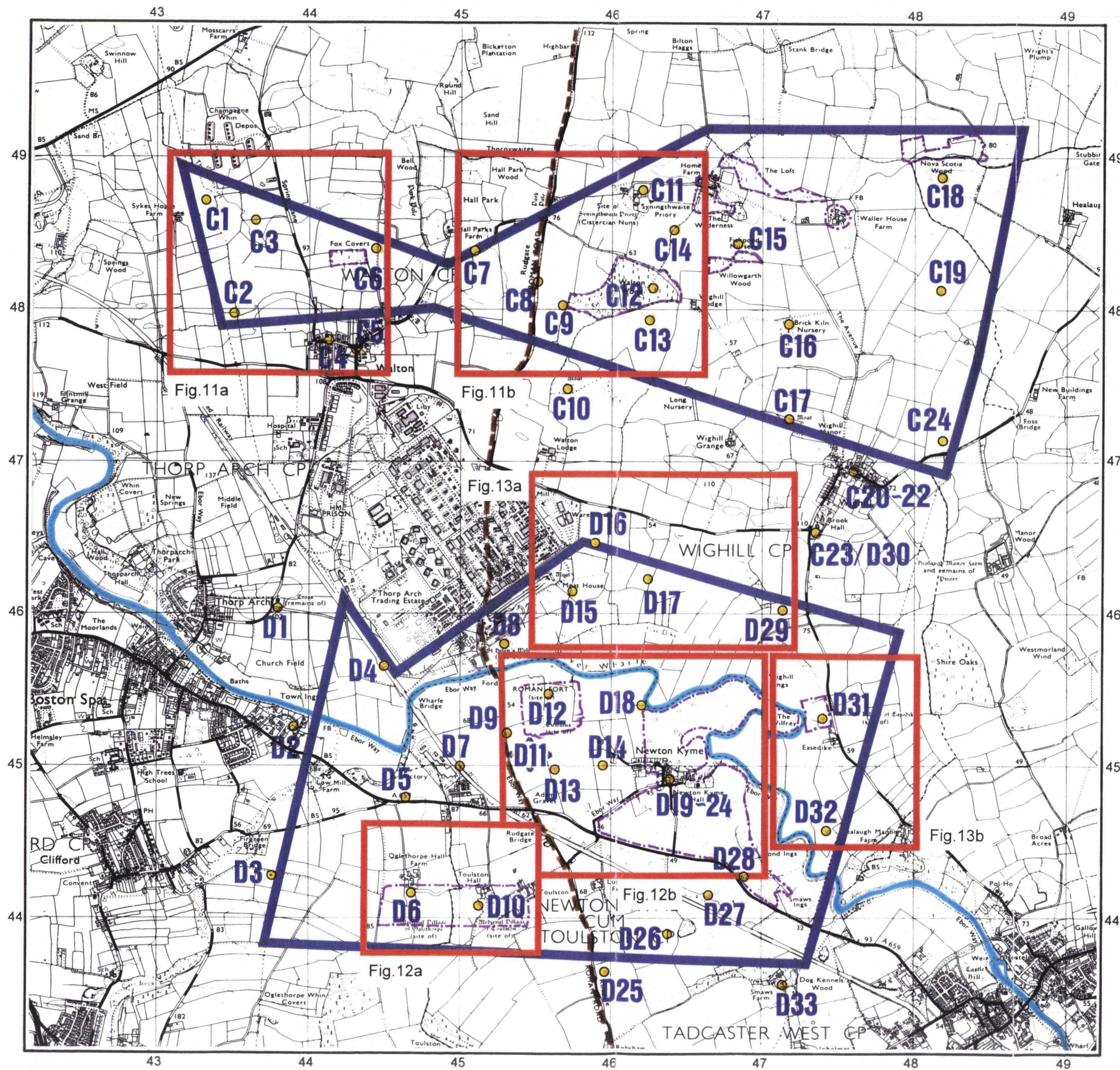


Figure 10: Corridors C and D - Site location plan.

Proposed Overhead Powerlines-North Yorkshire, Archaeological Assessment.

Key

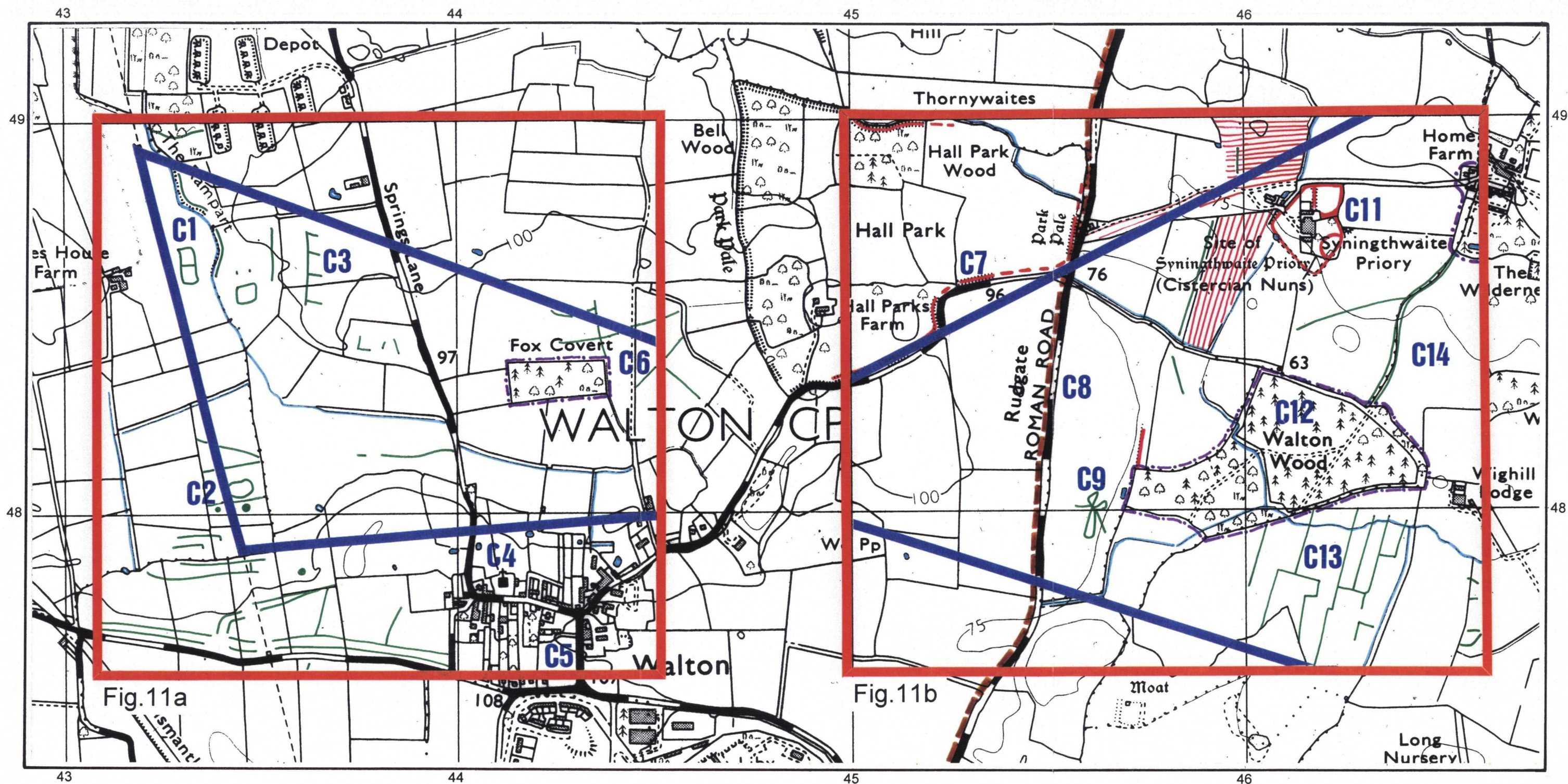
- Corridor Boundary
- Exclusion Zone
- Inset Detailed Area
- Site Reference
- Rivers and Drainage
- Line of Roman Road

Reproduced from the 1975-81 Ordnance Survey 1:25,000 mapping with the permission of the Controller of Her Majesty's Stationery Office © Crown Copyright. Unauthorised reproduction infringes Crown Copyright and may lead to prosecution or civil proceedings.

West Yorkshire Archaeology Service; Licence number 076406.

Scale 1:25,000





Key

Corridor Boundary

Exclusion Zone

Inset Detailed Area

Site Reference

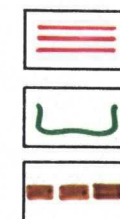
Rivers and Drainage



Earthworks

Cropmarks

Line of Roman Road



Reproduced from the 1975-81 Ordnance Survey 1:25,000 mapping with the permission of the Controller of Her Majesty's Stationery Office © Crown Copyright. Unauthorised reproduction infringes Crown Copyright and may lead to prosecution or civil proceedings.

West Yorkshire Archaeology Service; Licence number 076406.

Figure 11: Corridor C - inset details showing the nature and extent of known cropmark anomalies and extant earthwork features.

Proposed Overhead Powerlines-North Yorkshire, Archaeological Assessment.

1:10,000



0 500m