



Plate 34. Completed excavation of Trench 2. Facing north-east.

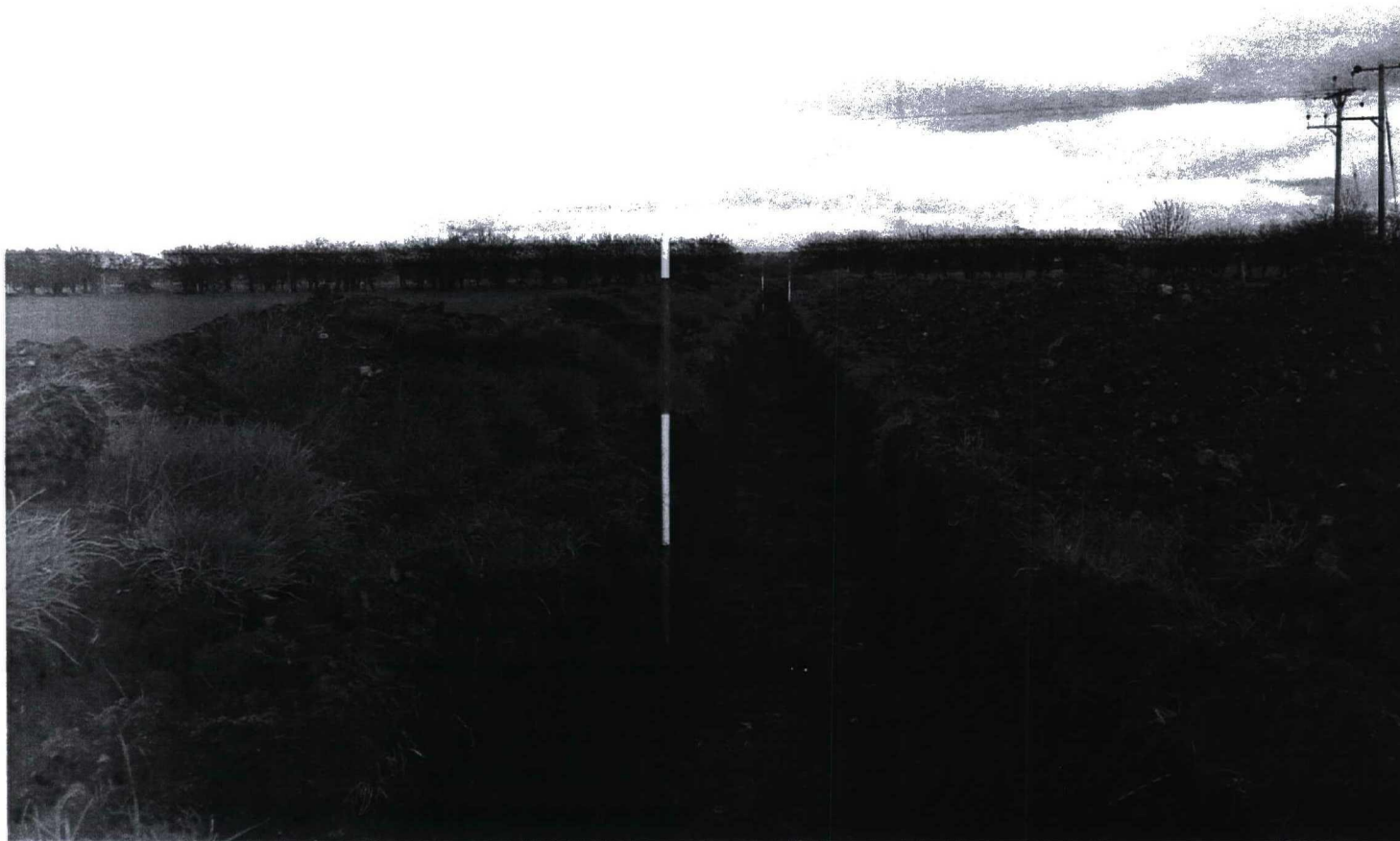


Plate 35. Completed excavation of Trench 2. Facing north-east.

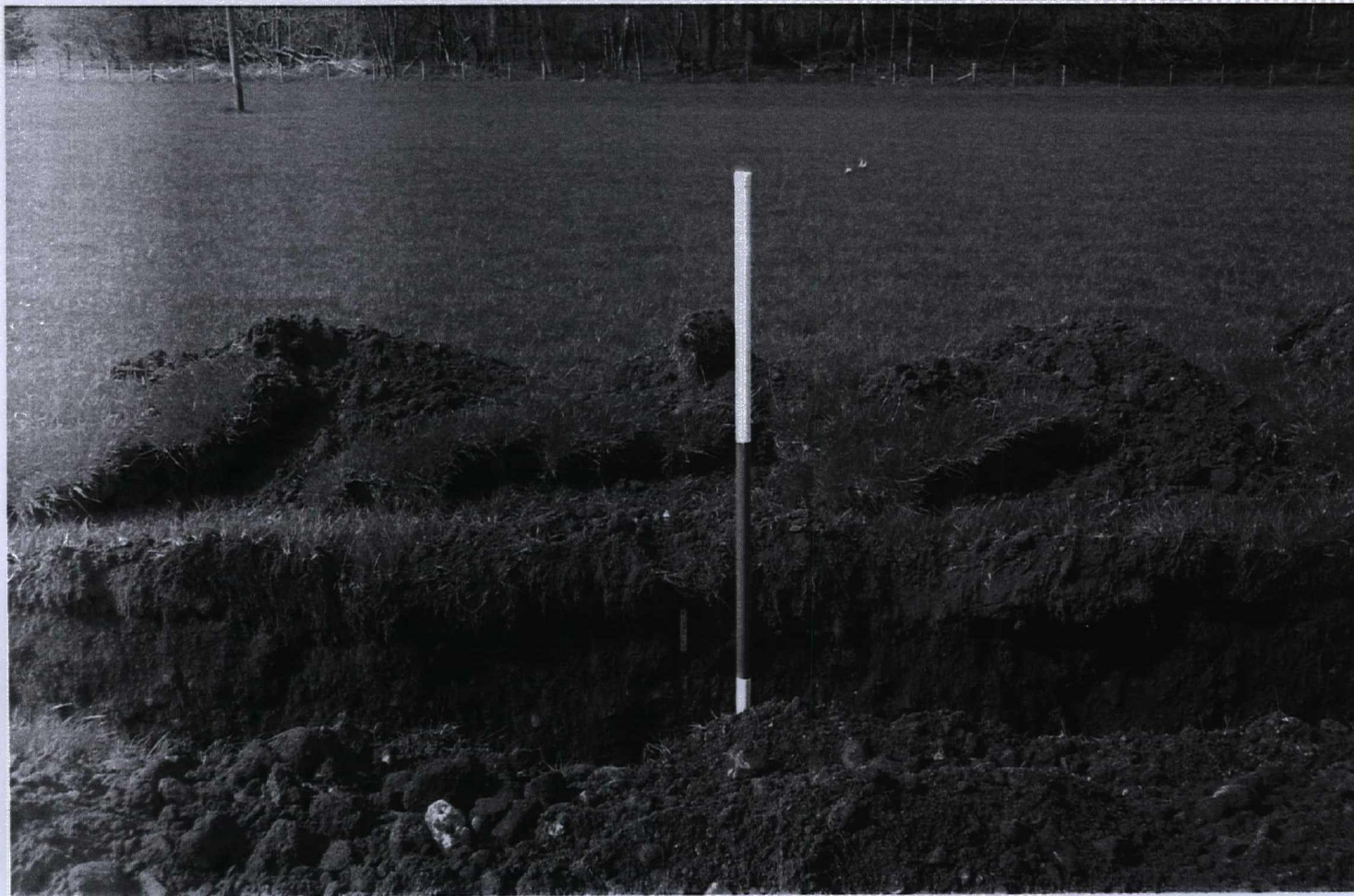
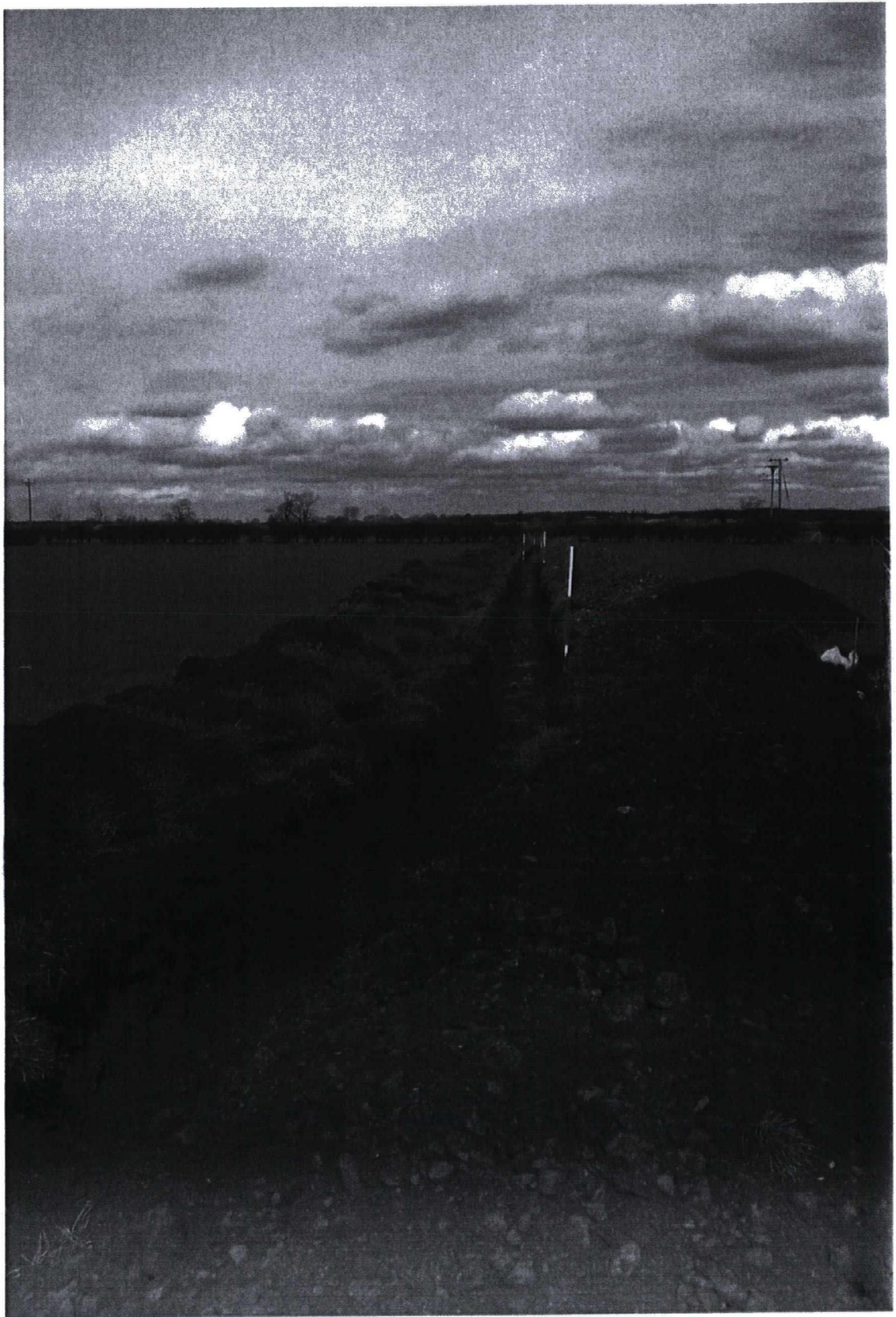


Plate 36. Aluminium marker in Trench 2. Facing north-west.



**Plate 37.** Aluminium marker in Trench 2. Facing north-west.



**Plate 38.** Completed excavation of Trench 2. Facing north-east.



**Plate 39.** Completed excavation of Trench 2. Facing north-east.



**Plate 40.** Completed excavation of Trench 2. Facing south-west.



Plate 41. Completed excavation of Trench 2. Facing south-west.





Plate 42. Completed excavation of Trench 2. Facing south-west.



**Plate 43.** Completed excavation of Trench 2. Facing north-east.



**Plate 44.** Completed excavation of Trench 2. Facing north-east.



**Plate 45.** Alignment of Trench 3 pipe trench, prior to excavation. Facing south-east.



**Plate 46.** Alignment of Trench 3 pipe trench, prior to excavation. Facing south-east.



**Plate 47.** Alignment of Trench 3 pipe trench, prior to excavation. Facing north-west.



**Plate 48.** Alignment of Trench 3 pipe trench, prior to excavation. Facing North-west.



**Plate 49.** Alignment of Trench 3 pipe trench, prior to excavation. Facing west.





**Plate 50.** Completed excavation of Trench 3. Facing north-west.



**Plate 51.** Completed excavation of Trench 3. Facing north-west.



**Plate 52.** Completed excavation of Trench 3. Facing south-east.



**Plate 53.** Completed excavation of Trench 3. Facing south-east.



**Plate 54.** Completed excavation of Trench 1. Facing south-east.