



Plate 1.
General view of castle garth. Facing south.



Plate 2.
Trench 5. Phase I features cut into natural. Facing south.



Plate 3.
Trench 3. Skeleton 3020 and gravel mound 3021. Facing north.



Plate 4.
Trench 3. Skeleton 3020. Facing west.



Plate 5.
Trench 3. Skeleton 3020 under excavation. Facing north.



Plate 6.
Trench 4. Skeleton 4020. Facing north-east.



Plate 7.
Trench 4. Skeleton 4020 with iron object in situ. Facing north.



Plate 8.
Trench 16. Skeleton 16014. Facing south.



Plate 9.
Trench 4. Layer 4006/7 and features 4015 and 4017.

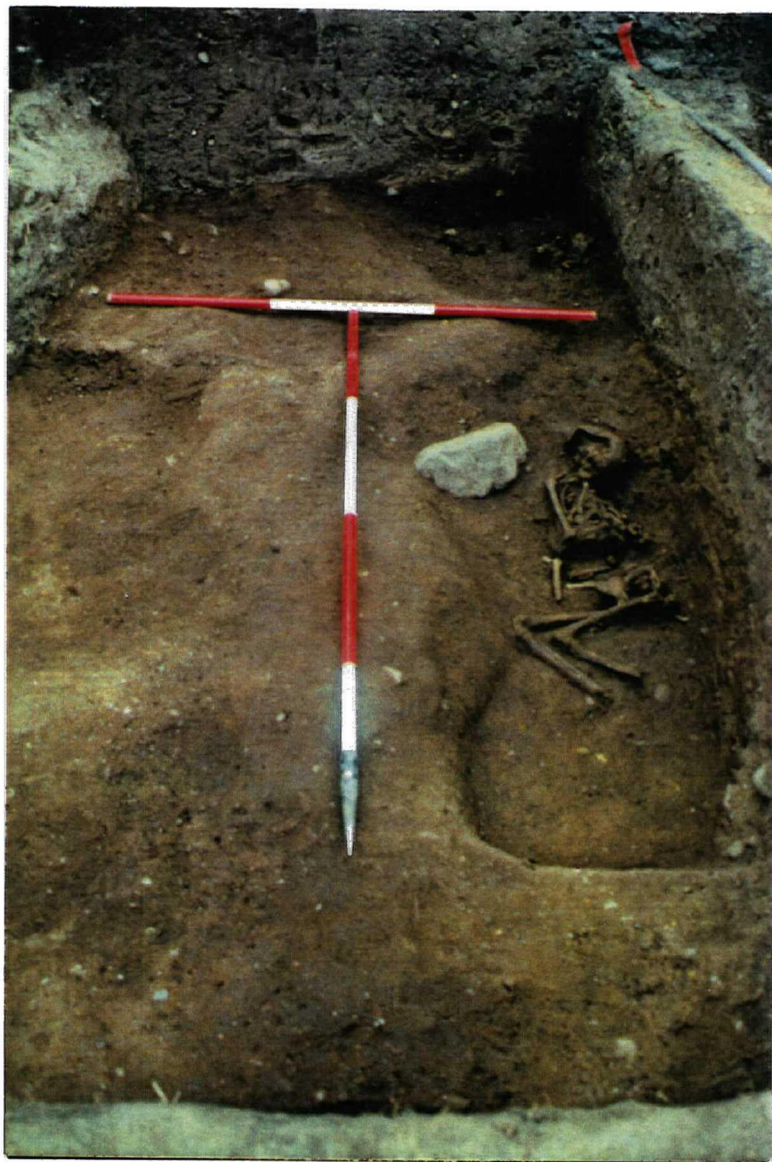


Plate 10.
Trench 5. Skeletons 5040 and 5041. Facing east.



Plate 11.
Trench 5. Skeleton 5040. Facing east.



Plate 12.
Trench 16. Closeup of cruciform brooch insitu. Skeleton 16014. Facing south-west.



Plate 13.
Trench 16. Close up of disturbed human bone associated with skeleton 16014. Facing south.



Plate 14.
Trench 1. South facing section. Facing north.



Plate 15.
Trench 1. Layer 1025 (cobbles). Facing west.

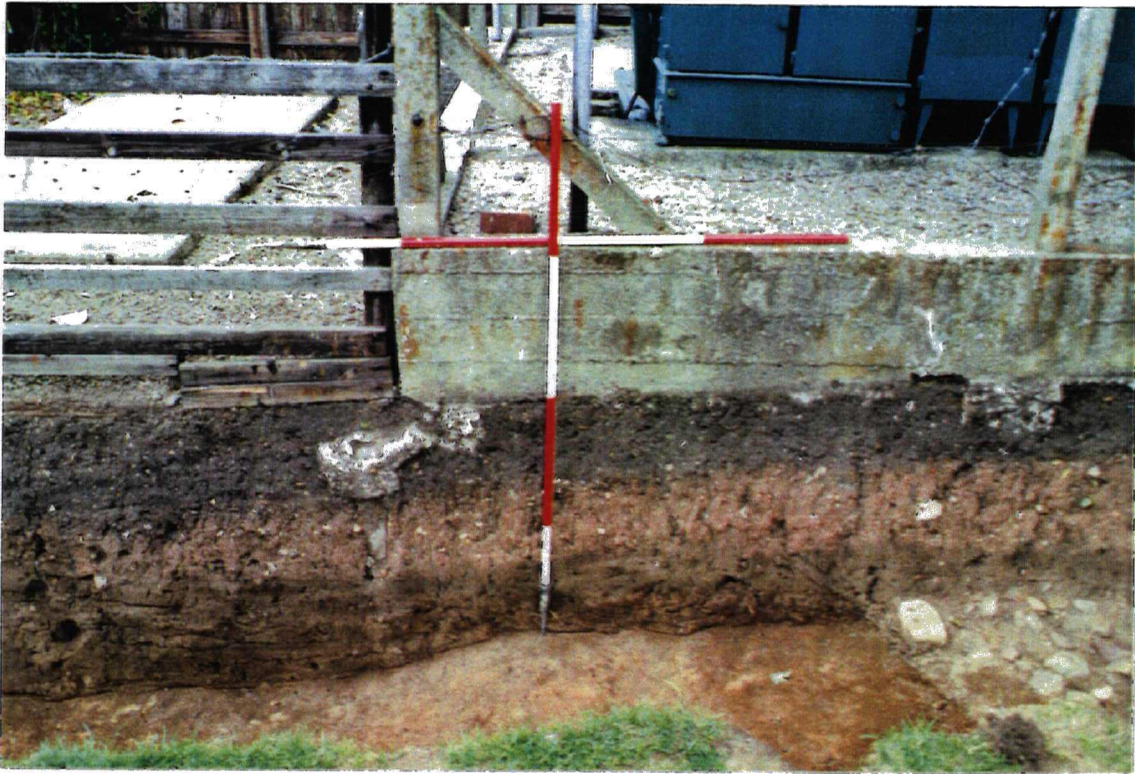


Plate 16.
Trench 2. South facing section. Facing north.

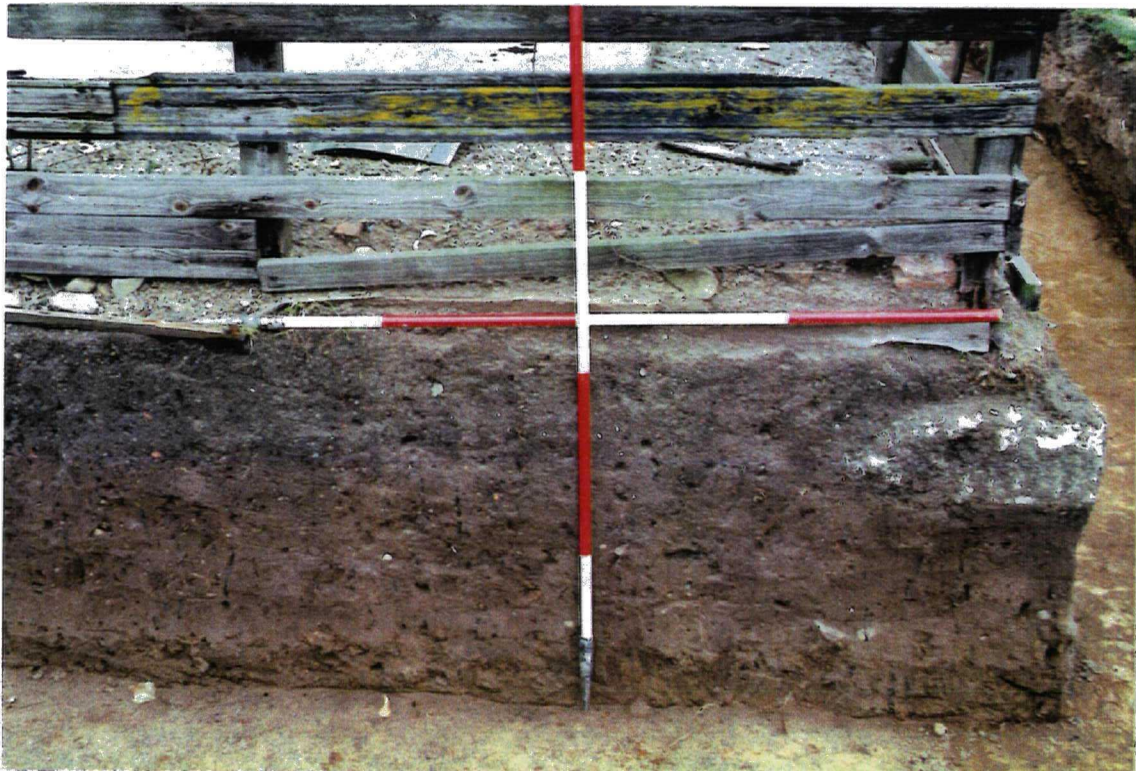


Plate 17.
Trench 3. West facing section. Facing east.



Plate 18.
Trench 4. West facing section. Facing east.



Plate 19.
Trench 13. North facing section. Facing south.



Plate 20.
Trench 16. South facing section. Facing north.



Plate 21.
Trench 16. West facing section. Facing east.

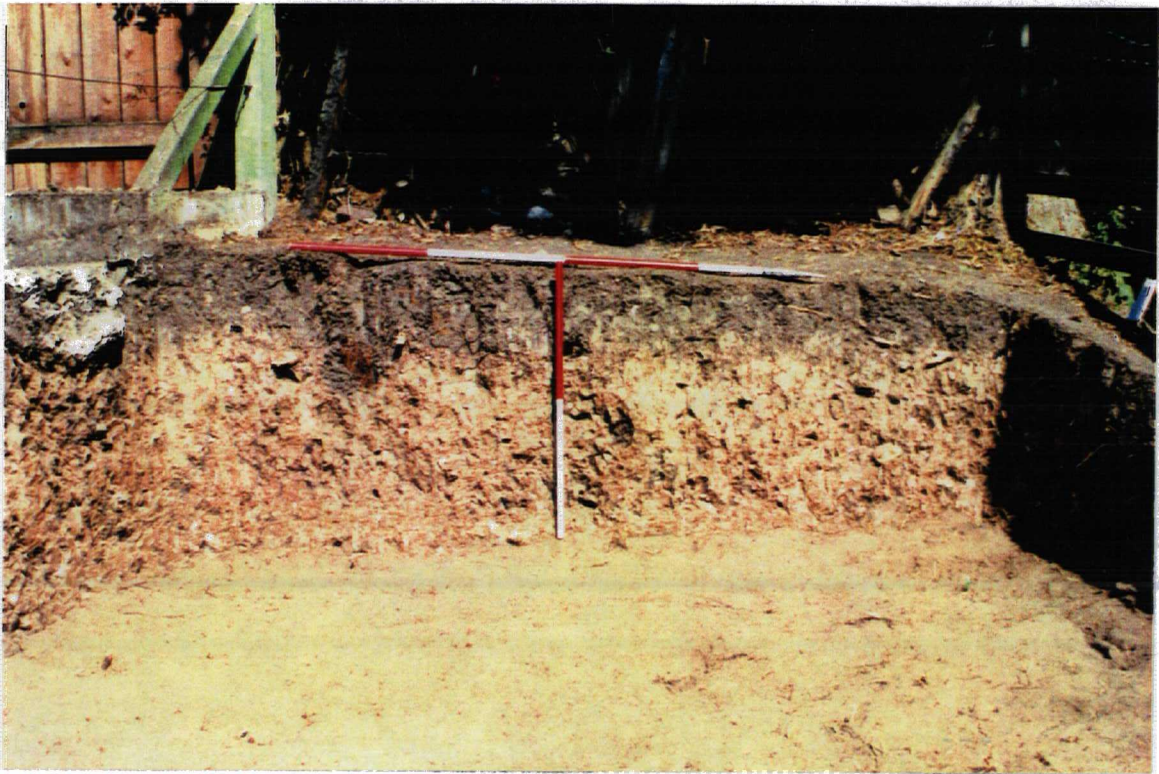


Plate 22.
Trench 1. West facing section. Facing east.



Plate 23.
Trench 5. Modern disturbances. Facing north.