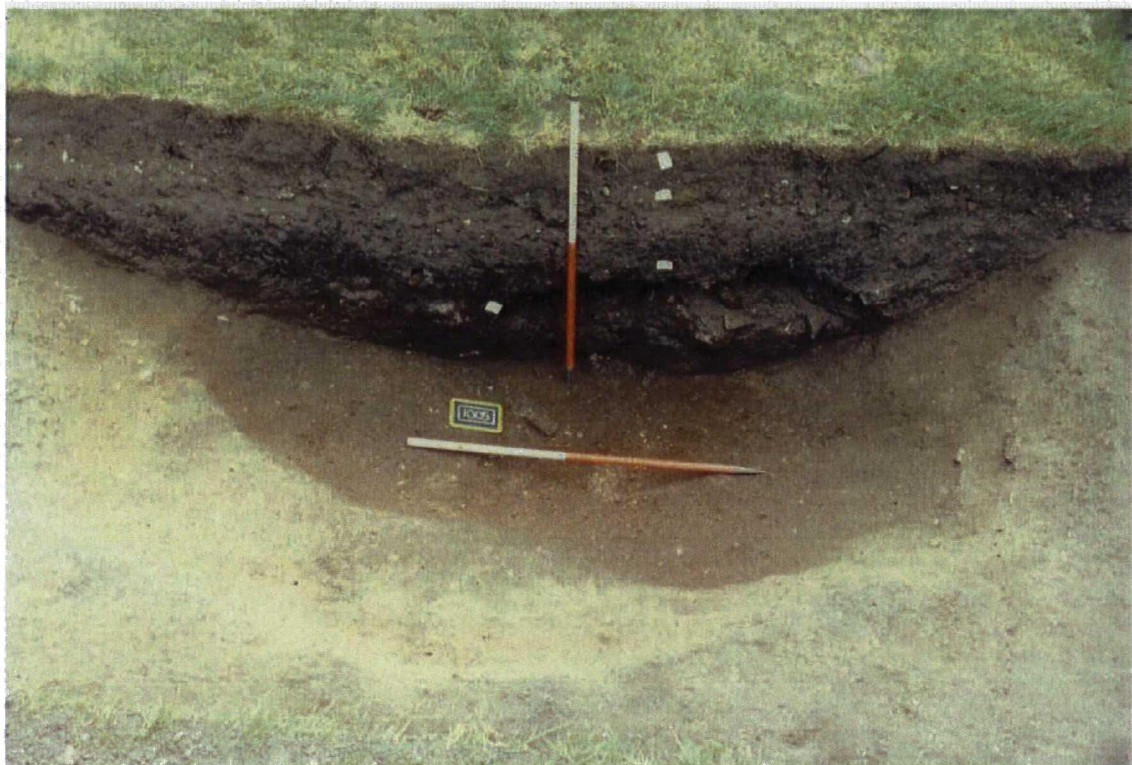


**Plate 3.** Trench 1: Rubble 1006. Facing East



**Plate 4.** Trench 1: Pit Cut 1005. Facing East





**Plate 5.** Trench 2: Pit Cut 2039. Facing East



**Plate 6.** Trench 2: Pit Cut 2036. Facing East





**Plate 7.** Trench 2: Posthole 2025 and Pit Cuts 2021, 2022, 2023 and 2024. Facing North



**Plate 8.** Trench 2: Wall 2002 and Cobbles 2003. Facing East





**Plate 9.** Trench 3: Pit Cuts 3006 and Segment Through Cut 3007. Facing South



**Plate 10.** Trench 3: Pit Cut 3007 and Post-Pads 3009 and 3010. Facing South





**Plate 11.** Trench 4: Stone Surface 4017. Facing East



**Plate 12.** Trench 4: Ditch Segment 4016. Facing North



# APPENDIX 1

## Context Listing

Cornucopia, 87 Commercial Street, Norton, North Yorkshire (Site Code MAP 01-07-05)

### Evaluation Trench 1

Context	Type	Description
1001	Deposit	Topsoil: dark grey brown silty loam.
1002	Deposit	Subsoil: grey brown silt
1003	Deposit	Fill of Pit 1005: dark grey brown silt with rubble and drain fragments.
1004	Deposit	Fill of Pit 1005: dark grey brown silt with limestone fragments.
1005	Cut	Large Pit
1006	Deposit	Fill of Pit 1005: Brick and concrete rubble
1007	Deposit	Subsoil: brown sandy silt with limestone and brick fragments
1008	Deposit	Fill of Pit 1010: dark brown silty sand with limestone fragments.
1009	Deposit	Fill of Pit 1011: reddish brown sandy silt with limestone and gravel inclusions.
1010	Cut	Pit
1011	Cut	Pit
1012	Deposit	Fill of Linear Feature 1013: grey brown sandy silt with limestone fragments
1013	Cut	Linear Feature
1014	Deposit	Fill of Pit 1015: dark brown sandy silt with limestone fragments
1015	Cut	Pit
1016	Deposit	Dark brown silty sand with limestone fragments
1017	Deposit	Fill of Large Pit 1018: dark brown sandy silt with limestone fragments
1018	Cut	Large Pit
1019	Deposit	Fill of Pit 1021: grey brown sandy silt with occasional limestone fragments
1020	Deposit	Fill of Pit 1022: grey brown sandy silt with occasional limestone fragments
1021	Cut	Pit
1022	Cut	Pit
1023	Natural	Pale yellow sand and gravel geological deposit
1024	Deposit	Pale yellow sand with gravel

### Evaluation Trench 2

Context	Type	Description
2001	Deposit	Topsoil: very dark grey sandy silty loam with limestone and brick inclusions.
2002	Structure	Brick wall
2003	Structure	Cobble surface
2004	Deposit	Bedding layer (mortar) for cobble surface 2003 in cut 2013
2005	Deposit	Fill of Pit 2010: dark grey brown with limestone, mortar, coal and brick fragments
2006	Deposit	Fill of Pit 2008: dark grey sandy silt with limestone and coal fragments
2007	Deposit	Fill of Pit 2009: dark grey sandy silt with occasional limestone fragment
2008	Cut	Pit
2009	Cut	Pit
2010	Cut	Pit
2011	Cut	Void/Posthole
2012	Cut	Void/Posthole
2013	Cut	Construction trench
2014	Deposit	Fill of Pit 2015: dark grey brown sandy silt with brick, glazed drainpipe and limestone fragments



<b>Context</b>	<b>Type</b>	<b>Description</b>
2015	Cut	Pit
2016	Deposit	Subsoil: brown sandy silt with limestone and flint gravel inclusions
2017	Deposit	Fill of Pit 2021: brown silty sand with mortar and brick fragments
2018	Deposit	Fill of Pit 2022: dark grey brown silty sand with mortar limestone and flint gravel inclusions
2019	Deposit	Fill of Pit 2023: dark grey brown/ brown silty sand with limestone and gravel inclusions
2020	Deposit	Fill of Pit 2024: grey brown/ brown silty sand with limestone and gravel inclusions
2021	Cut	Pit
2022	Cut	Pit
2023	Cut	Pit
2024	Cut	Pit
2025	Deposit	Fill of Pit 2028: grey brown silty sand with mortar, limestone and flint inclusions
2026	Deposit	Fill of Posthole 2027: grey brown sand with limestone and gravel inclusions
2027	Cut	Posthole
2028	Cut	Pit
2029	Deposit	Subsoil: brown silty sand with limestone and flint gravel inclusions
2030	Deposit	Fill of Pit 2031: grey brown silty sand with limestone and gravel inclusions
2031	Cut	Pit
2032	Deposit	Subsoil: brown silty sand with limestone and flint gravel inclusions
2033	Deposit	Fill of Pit 2037: grey slightly silty sand with limestone and gravel inclusions
2034	Deposit	Fill of Pit 2036: grey slightly silty sand with limestone and gravel inclusions
2035	Deposit	Fill of Pit 2036: slightly clay sandy silt with limestone and gravel inclusions
2036	Cut	Pit
2037	Cut	Pit
2038	Deposit	Fill of Pit 2039: brown sandy silt with limestone and gravel inclusions
2039	Cut	Pit
2040	Deposit	Fill of Posthole 2041: brown sandy silt with limestone and gravel inclusions
2041	Cut	Posthole
2042	Deposit	Reddish brown slightly silty sand with limestone and gravel inclusions.
2043	Deposit	Fill of Pit 2039: brown sandy silt and yellow sand with limestone and gravel inclusions
2044	Deposit	Fill of Pit 2039: brown slightly sandy clay silt with limestone and gravel inclusions
2045	Deposit	Fill of Pit/Gully 2046: grey brown fine silty sand with limestone and gravel inclusions
2046	Cut	Pit/Linear Feature
2047	Deposit	Fill of Pit 2048: dark grey brown silty sand with brick, limestone and gravel inclusions
2048	Cut	Pit

### **Evaluation Trench 3**

<b>Context</b>	<b>Type</b>	<b>Description</b>
3000	Deposit	Modern car park surface (removed by machine)
3001	Deposit	Limestone hardcore (removed by machine)
3002	Deposit	Topsoil: very dark grey sandy silt with limestone inclusions (removed by machine)
3003	Deposit	Subsoil: brown sand with limestone fragments (removed by machine)
3004	Deposit	Fill of Linear feature 3007: brown sand with limestone fragments
3005	Deposit	Fill of 3006: brown silty sand with gravel inclusions
3006	Cut	Pit
3007	Cut	Irregular feature
3008	Deposit	Brown silty sand with gravel inclusions

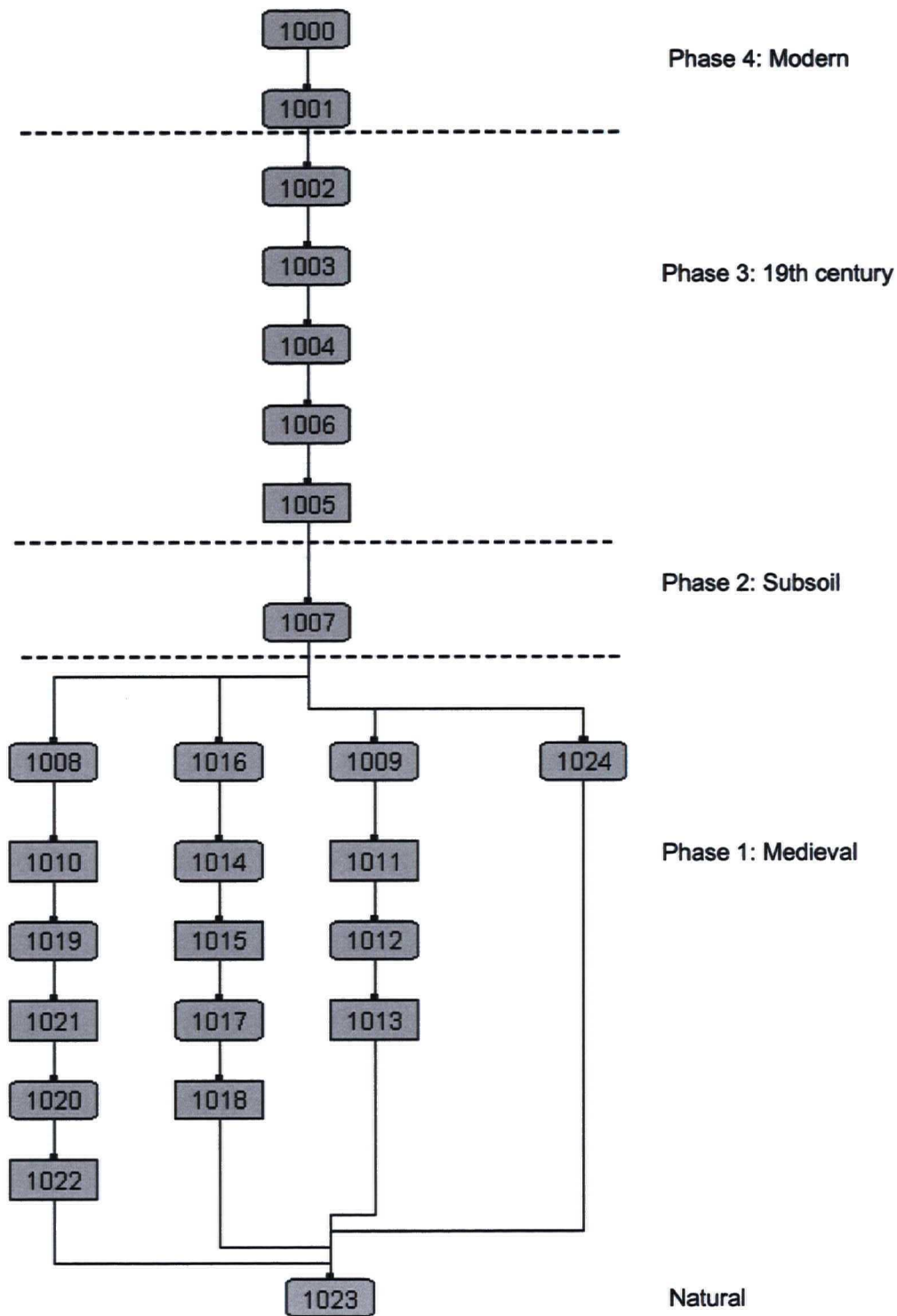


Context	Type	Description
3009	Structure	Postpad
3010	Structure	Postpad
3011	Deposit	Fill of Pit 3012: grey brown silty clay with limestone fragments
3012	Cut	Pit
3013	Deposit	Fill of Pit 3015: brown silty sand with occasional limestone fragments
3014	Cut	Pit

#### Evaluation Trench 4

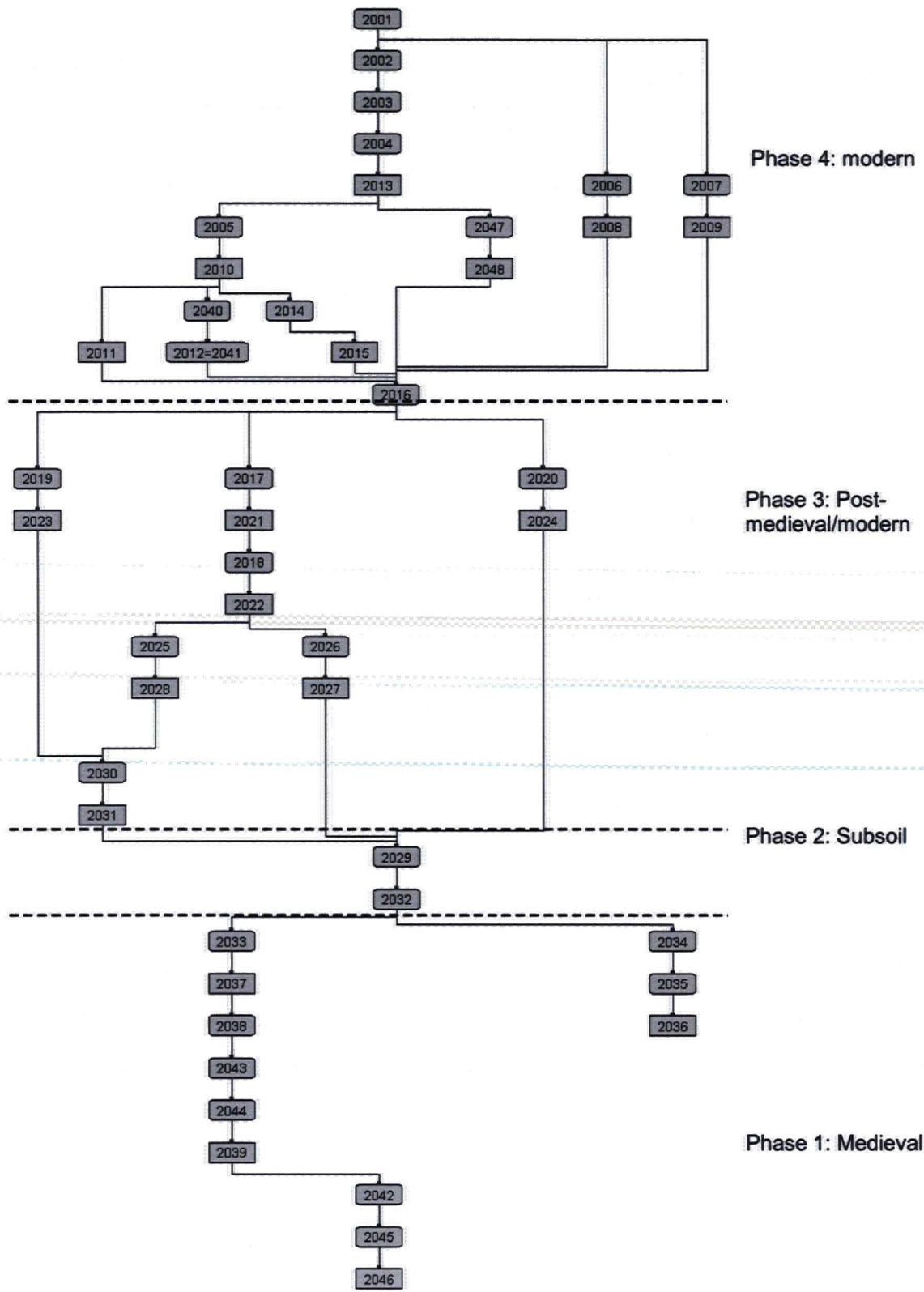
Context	Type	Description
4000	Deposit	Modern car park surface (removed by machine)
4001	Deposit	Limestone hardcore (removed by machine)
4002	Deposit	Fill of modern pit 4003: grey brown cinder with limestone and brick fragments
4003	Cut	Modern Pit
4004	Deposit	Fill of modern pit 4005: grey brown cinder with limestone and brick fragments
4005	Cut	Modern Pit
4006	Deposit	Fill of Pit 4007: grey brown cinder with brick
4007	Cut	Pit
4008	Deposit	Fill of pit 4009: grey cinder with limestone and brick inclusions
4009	Cut	Pit
4010	Deposit	Fill of Pit 4011: dark grey cinder with rubble
4011	Cut	Pit
4012	Deposit	Subsoil: brown silty sand with limestone and gravel fragments
4013	Structure	Limestone surface in brown silty sand matrix
4014	Deposit	Fill of ditch 4016: brown silty sand with limestone and gravel inclusions
4015	Deposit	Fill of ditch 4016: pale orange brown silty sand with gravel inclusions
4016	Cut	Ditch
4017	Structure	Same as 4013
4018	Deposit	Yellow brown sand with gravel inclusions





Cornucopia, 87 Commercial Street, Norton (SE 7957 7145)  
 MAP 01-07-05  
 Trench 1 Site Sequence

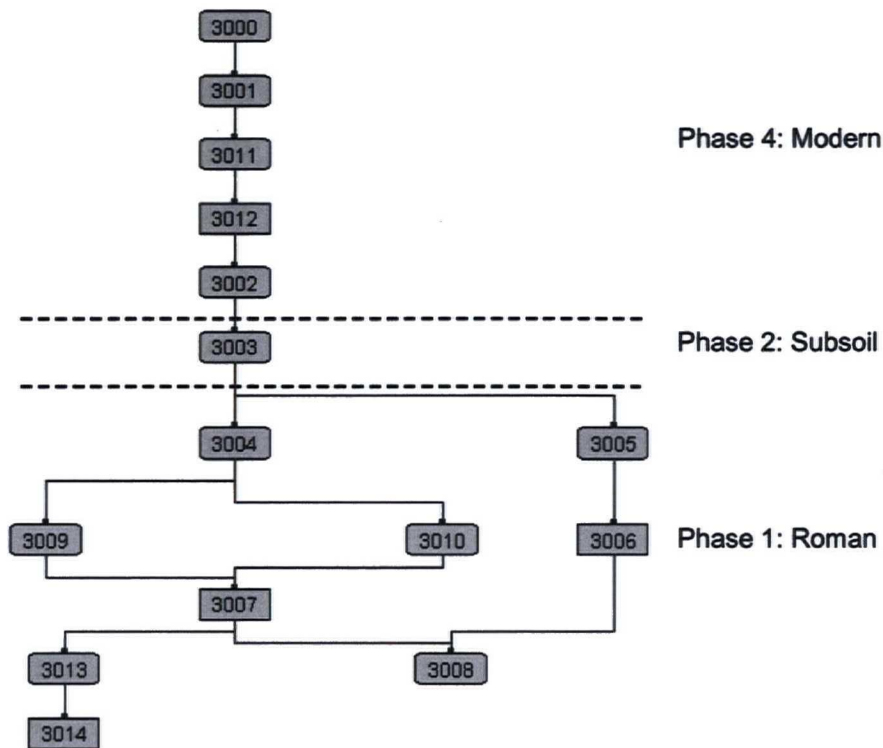




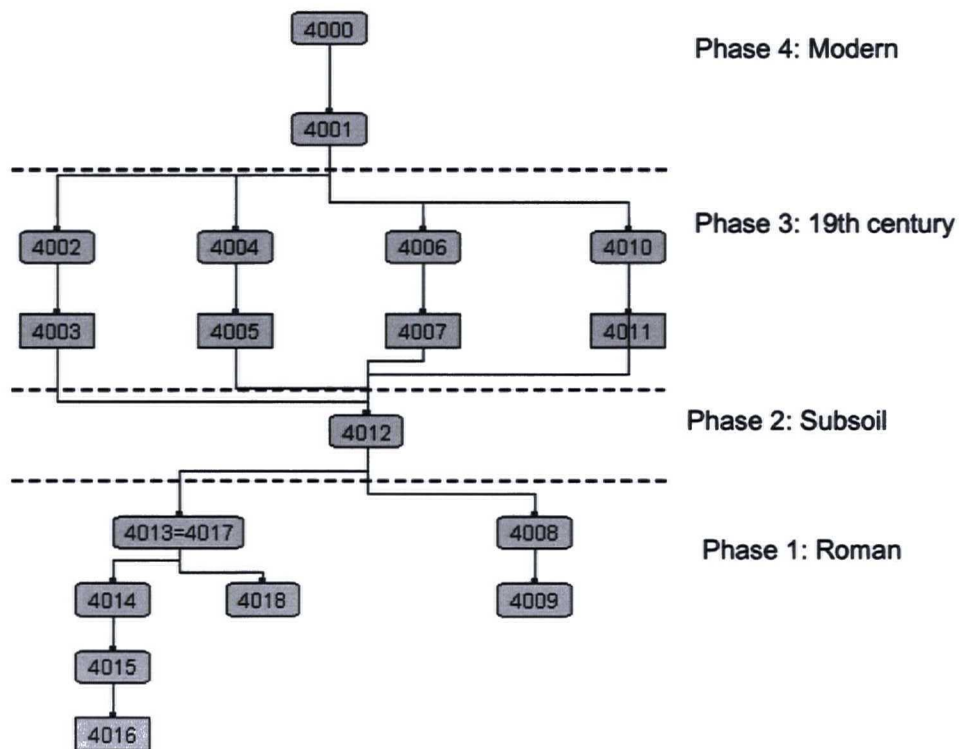
Commercial Street, Norton (SE 7957 7145)  
 MAP 01-07-05

Cornucopia, 87





Cornucopia, 87 Commercial Street, Norton (SE 7957 7145)  
 MAP 01-07-05  
 Trench 3 Site Sequence



Cornucopia, 87 Commercial Street, Norton (SE 7957 7145)  
 MAP 01-07-05  
 Trench 4 Site Sequence



## APPENDIX 2

### Finds Catalogue

Cornucopia, 87 Commercial Street, Norton, North Yorkshire (Site Code MAP 01-07-05)

#### Evaluation Trench 1

Context	Type	Small Find	Total	Description	Weight (g)	Spotdate
1002	Pottery		20	5 sherds, Staxton/Potter Brompton ware (2 cooking pot rim sherds) 1 glazed rim sherd, Scarborough ware 1 body sherd, York Glazed ware 3 sherds, Red ware (1 dish rim sherd) 1 body sherd, Marbled slipped ware 2 body sherds, Fe-glazed 19th century Stoneware 5 body sherds, Blue and White Transferware 2 sherds, Plant pot	261	19th-20th century
1002	Animal Bone		2	fragments		
1002	CBM		6	1 brick fragment 5 tile fragments	318	
1002	Glass		3	fragments	61	
1002	Clay tobacco pipe		3	stem fragments	4	
1002	Iron		1	nail	10	
1004	Pottery		8	2 sherds, Staxton/Potter Brompton ware (1 cooking pot rim sherd & 1 base sherd) 1 sherd, Blue and White Transferware 3 sherds, Pearlware 1 sherd, Cistercian ware 1 sherd, Greyware	173	19th century
1004	Animal Bone		1	fragment	6	
1004	CBM		1	tile fragment	110	
1004	Clay tobacco pipe		3	stem fragments	5	
1004	Glass		2	fragments	14	
1007	Pottery	1	1	Stamped Mortaria rim sherd	96	Roman
1008	Pottery		9	3 sherds, Roman (including 1 rim sherd) 1 sherd, Greyware 4 sherds, Staxton/Potter Brompton ware (including 1 base sherd) 1 sherd, Scarborough ware	227	13th-14th century
1009	Pottery		16	6 Roman sherds	938	Roman
1009	CBM		1	tile fragment	233	



Context	Type	Small Find	Total	Description	Weight (g)	Spotdate
1014	Pottery		11	9 Roman sherds 2 sherds, Staxton/Potter Brompton ware 10 body sherds	128	12th-14th
1007/ ?1017	Pottery		35	23 sherds, Staxton/ Potter Brompton ware (3 rim sherds & 8 base sherds) 3 sherds, York Glazed ware (different Glazed jugs) 5 Humber ware ( 4 sherds including 1 base from same jug with wavy line decoration 1 handle sherd, Red ware 1 sherd, Staffordshire, Yellowware 2 hserds, 19th century slipped ware bowls	1749	Post-medieval/ 19th century
1007/ ?1017	Animal Bone		25	fragments	600	
1007/ ?1017	Shell		1	oyster	15	
1007/ ?1017	CBM		1	tile fragment	204	
1007/ ?1017	Glass		1	fragment	7	

#### Evaluation Trench 2

Context	Type	Small Find	Total	Description	Weight	Spotdate
2001	Pottery		3	1 sherd, Greyware 1 rim sherd, 19th century Fe- glazed flagon/jar 1 Plant pot	227	Modern
2001	Animal Bone		2	fragments	43	
2001	Glass		5	3 marbles 2 fragments	92	
2001	Clay tobacco pipe		1	stem fragment		2 19th-20th century
2001	Coin		1	modern penny	3	
2004	Pottery		10	1 sherd, Brandsby type ware glazed jug 1 sherd, Marbled slipware 1 sherd Nottingham type stoneware 2 sherds, Redware 2 sherds, Pearlware 1 sherd, Blue and White Transferware 2 sherds, 19th cebtury salt- glazed bottle	151	19th century
2004	Glass		2	fragments	28	
2005	Pottery		6	4 sherds, Creamware (1 base sherd) 2 sherds Blue and White Transferware	52	19th century



Context	Type	Small Find	Total	Description	Weight (g)	Spotdate
2006	Pottery		5	1 bird figurine 4 sherds, 19th century earthenware 1 porcelain (Bird shaped knob)	75	19th century
2006	Clay tobacco pipe		1	complete stamped bowl	19	
2007	Pottery		7	1 rim sherd, Staxton/Potter Brompton ware cooking pot 4 sherds, 19th century earthenware 1 sherd, Plant pot 1 sherd, Blue and White transferware	105	19th century
2007	CBM		1	tile fragment	16	
2014	Pottery		6	3 sherds, Pearlware 1 sherd, Blue and white Transferware 2 sherds, Porcelain (joining dish rim) 1 sherd, slipped bowl	48	18th-19th century
2014	CBM		1	brick fragment	10	
2016	Pottery		9	2 rim sherds, Roman 1 rim sherd, Staxton/Potter Brompton ware 1 sherd, Humber ware 1 sherd, 19th century Fe-glazed bottle 2 sherds, Mn-glazed bowl (including 1 rim sherd) 1 sherd, Marbled slipware 1 sherd, Pearlware	467	first half 19th century
2016	CBM		1	tile fragment	67	
2017	Pottery		5	1 sherd, Blue and White Transferware 1 sherd, Creamware 3 sherds, Pearlware	50	late 18th-19th century
2018	Pottery		32	2 sherds, ?Roman 1 sherd, Greyware 1 sherd, York Glazed ware 1 sherd, Humber ware 1 sherd, Marbled slipware 5 sherds, Redware (same bowl) 2 sherds, Nottingham type stoneware 1 sherd, Creamware 8 sherds, Blue and White Transferware 8 sherds same salt glazed 19th century bottle	825	19th century
2018	CBM		5	2 tile fragments 3 brick fragments	356	
2018	Glass		2	fragments	19	



Context	Type	Small Find	Total	Description	Weight (g)	Spotdate
2018	Clay tobacco pipe		3	2 stem & 1 bowl fragment		4 18th-19th century
2019	Pottery		5	1 sherd, ?Roman 3 sherds, Pearlware (including 1 rim sherd and 1 base sherd)		43 19th century
2019	Glass		1	fragment	15	
2020	Pottery		2	1 rim sherd, Greyware 1 base sherd, Blackware		27 Post-medieval ?17th-18th century
2025	Pottery		22	5 sherds, Roman 1 base sherd, Brandsby type ware cooking pot 1 sherd, Staxton/Potter Brompton 2 sherds, Humberware 1 sherd, Hambleton ware 1 sherd, Ryedale type ware 1 rim sherd, Plant pot 1 sherd, Creamware 10 sherds, Pearlware (4 rim sherds)		408 late 18th-19th century
2025	CBM		1	tile fragment	180	
2025	Clay tobacco pipe		2	stem fragments		10 18th-19th century
2029	Pottery		7	2 sherds, Roman 1 base sherd, Brandsby type ware cooking pot 2 sherds, Humber ware (1 base sherd) 1 base sherd, Marbled slipware bowl		247 mid 18th century
2029	Clay tobacco pipe		1	decorated 'Masonic' bowl fragment		6 c. 1740-1820
2029	Metal	5	1	Copper Alloy Belt Stiffener with D Buckle (late medieval)		residual
2030	Pottery		1	1 rim sherd, Blue and White Transferware plate		10 18th-19th century
2030	Clay tobacco pipe		2	stem fragments		1 18th-19th century
2032	Pottery		46	33 sherds, Roman 1 sherd, Gritty ware cooking pot, extremely sooted 3 sherds, York Glazed ware 2 sherds, Beverley Type 2 ware 7 sherds, Staxton/Potter Brompton ware ( 2 base sherds)		599 12th-14th century
2032	Animal Bone		1	fragment	13	
2032	CBM		1	fragment	7	
2033	Pottery		40	36 sherds, Roman 4 sherds, Staxton/Potter Brompton ware		629 12th-14th century



Context	Type	Small Find	Total	Description	Weight (g)	Spotdate
2033	Animal Bone		5	fragments	63	
2033	CBM		7	1 tile fragment 8 brick fragments	201	
2034	Pottery		2	1 rim sherd, Samian 1 body sherd, Greyware	15	Roman
2035	Pottery		23	9 sherds, Roman 2 sherds, Greyware (1 cooking pot rim sherd) 7 sherds, Staxton/Potter Brompton ware ( 1 rim sherd & 1 base sherd) 1 sherd, Beverley Type 2 ware 1 sherd, Redware 1 base sherd, Marbled slipware 2 sherds, Pearlware	254	late 18th century
2035	CBM		1	fragment	30	
2035	Clay tobacco pipe		1	stem fragment	2	
2035	Flint		2	flakes	2	
2038	Pottery		39	18 sherds, Roman 1 sherd, Greyware 1 sherd, York Glazed ware 8 sherds, Staxton/Potter Brompton ware ( 1 bowl rim sherd, 1 base sherd) 1 sherd, unidentified Medieval	393	12th-14th century
2038	Animal Bone		2	fragments	6	
2038	CBM		2	brick fragments	191	
2038	Metal	2	1	Copper Alloy Object		
2038	Glass	3	1	Glass fragment		
2038	Metal	4	1	Ferrous ?nail		
2042	Pottery		22	16 sherds, Roman 3 sherds, Greyware (1 rim sherd) 1 sherd, Splashed ware 1 sherd, Staxton/Potter Brompton ware 1 sherd, unidentified Medieval	241	12th-13th century
2043	Pottery		9	8 sherds, Roman 1 base sherd, Brandsby type ware jug	102	13th-14th century
2043	CBM		2	brick fragments	81	
2044	Pottery		26	24 sherds, Roman 2 sherds, Staxton/Potter Brompton ware	299	12th-14th century
2044	CBM		2	1 brick fragment, 1 tile fragment	144	
2044	Metal		1	iron nail	5	

#### Evaluation Trench 3

Context	Type	Small Find	Total	Description	Weight	Spotdate
3004	Pottery		2	2 sherds, Roman		43 Roman

Context	Type	Small Find	Total	Description	Weight (g)	Spotdate
3005	Pottery		3	3 sherds, Roman (1 Calcite Gritted ware rim sherd)		87 Roman
Unstratified	Pottery		2	1 rim sherd, 1 body sherd		24

#### Evaluation Trench 4

Context	Type	Small Find	Total	Description	Weight	Spotdate
4008	Pottery		2	2 joining sherds of a large salt-glazed stoneware vinegar jar/cistern for 'Z.T. Welburn. Scarboro'		532 mid 19th century
4013	Pottery		2	1 sherd, Roman 1 sherd, Brandsby type ware		3 13th-14th century
4013	Animal Bone		1	tooth	0.2	
4014	Pottery		29	27 sherds, Roman 1 sherd, Staxton/Potter Brompton ware 1 sherd, Splashed ware		262 12th-14th century
4014	Animal Bone		1	fragment		14
4015	Pottery		4	4 sherds, Roman (2 from same Calcite Gritted ware vessel)		42 Roman
4015	Animal Bone		1	fragment		2
4015	Flint		1	struck flake		7
4018	Pottery		3	3 sherds, Roman		12 Roman
4018	Animal Bone		2	fragments		19



## APPENDIX 3

### Archive Listing

#### Cornucopia, 87 Commercial Street, Norton, North Yorkshire (Site Code MAP 01-07-05)

Plan No.	Trench	Type	Description	Scale
1	3	Plan	Deposits 3004, 3005 and 3008	Scale 1:20
2	4	Plan	Modern Intrusions 4003, 4005, 4007 and 4009 and Deposits 4013 and 4014.	Scale 1:20
3	3	Plan	Pits 3006 and 3007.	Scale 1:20
4	3	Plan	Postpads/Stones 3009 and 3010 and Pit 3014	Scale 1:20
5	3	Section	Trench 3: East Facing Section.	Scale 1:10
6	2	Plan	Wall 2002, Cobble surface 2003, Bedding layer 2004 and Deposits 2005, 2006, 2007 and 2016.	Scale 1:20
7	2	Plan	Postholes 2011 and 2012; Pits 2008, 2009, 2010 and 2015 and Construction cut 2013.	Scale 1:20
8	1	Plan	Deposit 1002.	Scale 1:20
9	4	Plan	Ditch Segment 4016 and Surface 4017.	Scale 1:20
10	4	Plan	Deposit 4018.	Scale 1:20
11	3	Section	Trench 3: South Facing Section.	Scale 1:10
12	3	Section	Trench 3: West Facing Section.	Scale 1:10
13	2	Plan	Deposits 2017, 2018, 2019 and 2020.	Scale 1:20
14	2	Plan	Posthole 2024 and Pits 2021, 2022, 2023 and 2024.	Scale 1:20
15	1	Plan	Rubble 1003.	Scale 1:20
16	1	Plan	Structure/Rubble 1006.	Scale 1:20
17	2	Plan	Desposit 2025.	Scale 1:20
18	1	Plan	Pit/Feature 1005.	Scale 1:20
19	1	Plan	Deposit 1007.	Scale 1:20
20	2	Plan	Pit 2028 and Deposits 2029 and 2030.	Scale 1:20
21	2	Plan	Pit 2031 and Deposit 2032.	Scale 1:20
22	1	Plan	Deposits 1008, 1009, 1012 and 1016.	Scale 1:20
23	4	Plan	Trench 4: End of Exavation Plan.	Scale 1:20
24	4	Section	Trench 4: East Facing Section.	Scale 1:10
25	4	Section	Trench 4: South Facing Section.	Scale 1:10
26	4	Section	Trench 4: West Facing Section.	Scale 1:10
27	4	Section	Trench 4: North Facing Section.	Scale 1:10
28	1	Plan	Pits 1011, 1015 and 1021 and Linear Features 1013 and 1022.	Scale 1:20
29	2	Plan	Deposits 2033, 2034 and 2035.	Scale 1:10
30	2	Plan	Pits 2036 & 2037.	Scale 1: 20
31	1	Plan	Deposits 1014, 1019 & 1020.	Scale 1:20
32	2	Plan	Deposit 2038.	Scale 1:20
33	1	Section	North-east facing section: Pit 1015	Scale 1:10
34	2	Plan	Pit 2039.	Scale 1:20
35	1	Section	Trench 1: West Facing Section.	Scale 1:10
36	1	Plan	Deposit 1017.	Scale 1:20
37	1	Plan	Pit 1018.	Scale 1:20
38	1	Section	South Facing Section: Pit 1021 and Linear Feature 1022.	Scale 1:10
39	2	Plan	Desposits 2040 and 2042.	Scale 1:20

<b>Plan No.</b>	<b>Trench</b>	<b>Type</b>	<b>Description</b>	<b>Scale</b>
40	2	Plan	Posthole 2041.	Scale 1:20
41	2	Plan	Deposits 2043 and 2045.	Scale 1:20
42	2	Plan	Deposit 2044.	Scale 1:20
43	1	Section	Trench 1: East Facing Section.	Scale 1:10
44	2	Plan	Linear Feature/Pit 2045	Scale 1:20
45	1	Section	Trench 1: North Facing Section.	Scale 1:10
46	1	Section	Trench 1: South Facing Section.	Scale 1:10
47	2	Section	Trench 2: West Facing Section.	Scale 1:10
48	2	Section	Trench 2: East Facing Section.	Scale 1:10
49	2	Section	Trench 2: North Facing Section.	Scale 1:10
50	2	Section	Trench 2: South Facing Section.	Scale 1:10
51	2	Plan	Trench 2: End of Excavation (top of Natural Sand and Gravel Deposits)	Scale 1:20



## APPENDIX 4

### Photographic Listing

**Cornucopia, 87 Commercial Street, Norton, North Yorkshire (Site Code MAP 01-07-05)**

Film No.	Film Type	Neg. No.	Date	Description	Scale	Facing
810	Colour Print	1	14/07/2005	Identification Shot.	-	-
810	Colour Print	2	15/07/2005	Pre-excavation view of Trench 3.	2 x 1m	South
810	Colour Print	3	15/07/2005	Pre-excavation view of Trench 3.	2 x 1m	South
810	Colour Print	4	15/07/2005	Pre-excavation view of Trench 4.	2 x 1m	North
810	Colour Print	5	15/07/2005	Pre-excavation view of Trench 4.	2 x 1m	North
810	Colour Print	6	15/07/2005	Cut 3006 and Segment through 3007.	2 x 1m	South
810	Colour Print	7	15/07/2005	Cut 3006 and Segment through 3007.	2 x 1m	South
810	Colour Print	8	15/07/2005	Pit cut 3006.	0.5m	North
810	Colour Print	9	15/07/2005	Pit cut 3006.	0.5m	North
810	Colour Print	10	15/07/2005	Trench 4 after removal of context 4003.	2 x 1m	East
810	Colour Print	11	15/07/2005	Trench 4 after removal of context 4003.	2 x 1m	East
810	Colour Print	12	19/07/2005	Trench 2: Wall 2002 and cobbles 2003.	2 x 1m	East
810	Colour Print	13	19/07/2005	Trench 2: Wall 2002 and cobbles 2003.	2 x 1m	East
810	Colour Print	14	19/07/2005	Trench 2 after removal of topsoil (2001).	2 x 1m	North
810	Colour Print	15	19/07/2005	Trench 2 after removal of topsoil (2001).	2 x 1m	North
810	Colour Print	16	19/07/2005	Pit cut 3007 and postpads/stones 3009 and 3010.	2 x 1m	South
810	Colour Print	17	19/07/2005	Pit cut 3007 and postpads/stones 3009 and 3010.	2 x 1m	South
810	Colour Print	18	19/07/2005	Ditch segment 4016 and Deposits 4014 and 4015.	1m	North
810	Colour Print	19	19/07/2005	Ditch segment 4016 and Deposits 4014 and 4015.	1m	North
810	Colour Print	20	19/07/2005	Pit 3014 and East facing Section.	1m	West
810	Colour Print	21	19/07/2005	Pit 3014 and East facing Section.	1m	West
810	Colour Print	22	19/07/2005	Stone Surface 4017	0.5m	East
810	Colour Print	23	19/07/2005	Stone Surface 4017	0.5m	East
810	Colour Print	24	19/07/2005	Trench 1: after removal of topsoil (context 1001)	2 x 1m	East
810	Colour Print	25	19/07/2005	Trench 1: after removal of topsoil (context 1001)	2 x 1m	East
810	Colour Print	26	19/07/2005	Modern Features: Cuts 2008, 2009, 2010, 2011, 2012, 2013 and 2015.	2 x 1m	North
810	Colour Print	27	19/07/2005	Modern Features: Cuts 2008, 2009, 2010, 2011, 2012, 2013 and 2015.	2 x 1m	North

Film No.	Film Type	Neg. No.	Date	Description	Scale	Facing
810	Colour Print	28	20/07/2005	Pit cuts 3006 and 3007	1m	North
810	Colour Print	29	20/07/2005	Pit cuts 3006 and 3007	1m	North
810	Colour Print	30	20/07/2005	Deposits 2017, 2018, 2019 and 2020.	1m	North
810	Colour Print	31	20/07/2005	Deposits 2017, 2018, 2019 and 2020.	1m	North
810	Colour Print	32	20/07/2005	Pit 3006 and West Facing Section.	1m	East
810	Colour Print	33	20/07/2005	Pit 3006 and West Facing Section.	1m	East
810	Colour Print	34	20/07/2005	Rubble 1003.	1m & 0.5m	East
810	Colour Print	35	20/07/2005	Rubble 1003.	1m & 0.5m	East
810	Colour Print	36	20/07/2005	Posthole 2024 and Pits 2021, 2022, 2023 and 2024.	2 x 1m	North
811	Colour Slide	1	14/07/2005	Identification Shot.	-	-
811	Colour Slide	2	15/07/2005	Pre-excavation view of Trench 3.	2 x 1m	South
811	Colour Slide	3	15/07/2005	Pre-excavation view of Trench 3.	2 x 1m	South
811	Colour Slide	4	15/07/2005	Pre-excavation view of Trench 4.	2 x 1m	North
811	Colour Slide	5	15/07/2005	Pre-excavation view of Trench 4.	2 x 1m	North
811	Colour Slide	6	15/07/2005	Cut 3006 and Segment through 3007.	2 x 1m	South
811	Colour Slide	7	15/07/2005	Cut 3006 and Segment through 3007.	2 x 1m	South
811	Colour Slide	8	15/07/2005	Pit cut 3006.	0.5m	North
811	Colour Slide	9	15/07/2005	Pit cut 3006.	0.5m	North
811	Colour Slide	10	15/07/2005	Trench 4 after removal of context 4003.	2 x 1m	East
811	Colour Slide	11	15/07/2005	Trench 4 after removal of context 4003.	2 x 1m	East
811	Colour Slide	12	19/07/2005	Trench 2: Wall 2002 and cobbles 2003.	2 x 1m	East
811	Colour Slide	13	19/07/2005	Trench 2: Wall 2002 and cobbles 2003.	2 x 1m	East
811	Colour Slide	14	19/07/2005	Trench 2 after removal of topsoil (2001).	2 x 1m	North
811	Colour Slide	15	19/07/2005	Trench 2 after removal of topsoil (2001).	2 x 1m	North
811	Colour Slide	16	19/07/2005	Pit cut 3007 and postpads/stones 3009 and 3010.	2 x 1m	South
811	Colour Slide	17	19/07/2005	Pit cut 3007 and postpads/stones 3009 and 3010.	2 x 1m	South
811	Colour Slide	18	19/07/2005	Ditch segment 4016 and Deposits 4014 and 4015.	1m	North
811	Colour Slide	19	19/07/2005	Ditch segment 4016 and Deposits 4014 and 4015.	1m	North



Film No.	Film Type	Neg. No.	Date	Description	Scale	Facing
811	Colour Slide	20	19/07/2005	Ditch segment 4016 and Deposits 4014 and 4015.	1m	North
811	Colour Slide	21	19/07/2005	Pit 3014 and East facing Section.	1m	West
811	Colour Slide	22	19/07/2005	Pit 3014 and East facing Section.	1m	West
811	Colour Slide	23	19/07/2005	Stone Surface 4017	0.5m	East
811	Colour Slide	24	19/07/2005	Stone Surface 4017	0.5m	East
811	Colour Slide	25	19/07/2005	Trench 1: after removal of topsoil (context 1001)	2 x 1m	East
811	Colour Slide	26	19/07/2005	Trench 1: after removal of topsoil (context 1001)	2 x 1m	East
811	Colour Slide	27	19/07/2005	Modern Features: Cuts 2008, 2009, 2010, 2011, 2012, 2013 and 2015.	2 x 1m	North
811	Colour Slide	28	19/07/2005	Modern Features: Cuts 2008, 2009, 2010, 2011, 2012, 2013 and 2015.	2 x 1m	North
811	Colour Slide	29	20/07/2005	Pit cuts 3006 and 3007	1m	North
811	Colour Slide	30	20/07/2005	Pit cuts 3006 and 3007	1m	North
811	Colour Slide	31	20/07/2005	Deposits 2017, 2018, 2019 and 2020.	1m	North
811	Colour Slide	32	20/07/2005	Deposits 2017, 2018, 2019 and 2020.	1m	North
811	Colour Slide	33	20/07/2005	Pit 3006 and West Facing Section.	1m	East
811	Colour Slide	34	20/07/2005	Pit 3006 and West Facing Section.	1m	East
811	Colour Slide	35	20/07/2005	Rubble 1003.	1m & 0.5m	East
811	Colour Slide	36	20/07/2005	Rubble 1003.	1m & 0.5m	East
811	Colour Slide	37	20/07/2005	Posthole 2024 and Pits 2021, 2022, 2023 and 2024.	2 x 1m	North
812	Black & White Print	36	14/07/2005	Identification Shot.	-	-
812	Black & White Print	35	15/07/2005	Pre-excavation view of Trench 3.	2 x 1m	South
812	Black & White Print	34	15/07/2005	Pre-excavation view of Trench 3.	2 x 1m	South
812	Black & White Print	33	15/07/2005	Pre-excavation view of Trench 4.	2 x 1m	North
812	Black & White Print	32	15/07/2005	Pre-excavation view of Trench 4.	2 x 1m	North
812	Black & White Print	31	15/07/2005	Cut 3006 and Segment through 3007.	2 x 1m	South
812	Black & White Print	30	15/07/2005	Cut 3006 and Segment through 3007.	2 x 1m	South
812	Black & White Print	29	15/07/2005	Pit cut 3006.	0.5m	North
812	Black & White Print	28	15/07/2005	Pit cut 3006.	0.5m	North
812	Black & White Print	27	15/07/2005	Trench 4 after excavation of cuts 4003, 4005, 4007 and 4009.	2 x 1m	East
812	Black & White Print	26	15/07/2005	Trench 4 after excavation of cuts 4003, 4005, 4007 and 4009.	2 x 1m	East

Film No.	Film Type	Neg. No.	Date	Description	Scale	Facing
812	Black & White Print	25	19/07/2005	Trench 2: Wall 2002 and cobbles 2003.	2 x 1m	East
812	Black & White Print	24	19/07/2005	Trench 2: Wall 2002 and cobbles 2003.	2 x 1m	East
812	Black & White Print	23	19/07/2005	Trench 2 after removal of topsoil (2001).	2 x 1m	North
812	Black & White Print	22	19/07/2005	Trench 2 after removal of topsoil (2001).	2 x 1m	North
812	Black & White Print	21	19/07/2005	Pit cut 3007 and postpads/stones 3009 and 3010.	2 x 1m	South
812	Black & White Print	20	19/07/2005	Pit cut 3007 and postpads/stones 3009 and 3010.	2 x 1m	South
812	Black & White Print	19	19/07/2005	Ditch segment 4016 and Deposits 4014 and 4015.	1m	North
812	Black & White Print	18	19/07/2005	Ditch segment 4016 and Deposits 4014 and 4015.	1m	North
812	Black & White Print	17	19/07/2005	Pit 3014 and East facing Section.	1m	West
812	Black & White Print	16	19/07/2005	Pit 3014 and East facing Section.	1m	West
812	Black & White Print	15	19/07/2005	Stone Surface 4017	0.5m	East
812	Black & White Print	14	19/07/2005	Stone Surface 4017	0.5m	East
812	Black & White Print	13	19/07/2005	Trench 1: after removal of topsoil (context 1001)	2 x 1m	East
812	Black & White Print	12	19/07/2005	Trench 1: after removal of topsoil (context 1001)	2 x 1m	East
812	Black & White Print	11	19/07/2005	Modern Features: Cuts 2008, 2009, 2010, 2011, 2012, 2013 and 2015.	2 x 1m	North
812	Black & White Print	10	19/07/2005	Modern Features: Cuts 2008, 2009, 2010, 2011, 2012, 2013 and 2015.	2 x 1m	North
812	Black & White Print	9	20/07/2005	Pit cuts 3006 and 3007 - South Facing Section	1m	North
812	Black & White Print	8	20/07/2005	Pit cuts 3006 and 3007 - South Facing Section	1m	North
812	Black & White Print	7	20/07/2005	Deposits 2017, 2018, 2019 and 2020.	1m	North
812	Black & White Print	6	20/07/2005	Deposits 2017, 2018, 2019 and 2020.	1m	North
812	Black & White Print	5	20/07/2005	Pit 3006 and West Facing Section.	1m	East
812	Black & White Print	4	20/07/2005	Pit 3006 and West Facing Section.	1m	East
812	Black & White Print	3	20/07/2005	Rubble 1003.	1m & 0.5m	East
812	Black & White Print	2	20/07/2005	Rubble 1003.	1m & 0.5m	East
812	Black & White Print	1	20/07/2005	Posthole 2024 and Pits 2021, 2022 and 2023.	2 x 1m	North
813	Black & White Print	36	21/07/2005	Identification Shot.	-	-
813	Black & White Print	35	21/07/2005	Posthole 2024 and Pits 2021, 2022 and 2023.	2 x 1m	North



Film No.	Film Type	Neg. No.	Date	Description	Scale	Facing
813	Black & White Print	34	21/07/2005	Rubble/Structure 1006.	1m	East
813	Black & White Print	33	21/07/2005	Rubble/Structure 1006.	1m	East
813	Black & White Print	32	21/07/2005	Pit/Feature cut 1005.	2 x 1m	South
813	Black & White Print	31	21/07/2005	Pit/Feature cut 1005.	2 x 1m	South
813	Black & White Print	30	21/07/2005	Pit cut 2028.	2 x 1m	East
813	Black & White Print	29	21/07/2005	Pit cut 2028.	2 x 1m	East
813	Black & White Print	28	22/07/2005	Post-excavation view of Trench 4.	2 x 1m	North
813	Black & White Print	27	22/07/2005	Post-excavation view of Trench 4.	2 x 1m	North
813	Black & White Print	26	22/07/2005	Trench 4: South Facing Section.	1.5m	North
813	Black & White Print	25	22/07/2005	Trench 4: South Facing Section.	1.5m	North
813	Black & White Print	24	22/07/2005	Trench 4: North Facing Section.	1.5m	South
813	Black & White Print	23	22/07/2005	Trench 4: North Facing Section.	1.5m	South
813	Black & White Print	22	22/07/2005	Trench 4: West Facing Section.	1.5m	East
813	Black & White Print	21	22/07/2005	Trench 4: West Facing Section.	1.5m	East
813	Black & White Print	20	22/07/2005	Pit cut 2031.	0.5m	South
813	Black & White Print	19	22/07/2005	Pit cut 2031.	0.5m	South
813	Black & White Print	18	22/07/2005	Deposits 1008, 1009, 1012 and 1016.	2 x 1m	West
813	Black & White Print	17	22/07/2005	Deposits 1008, 1009, 1012 and 1016.	2 x 1m	West
813	Black & White Print	16	22/07/2005	Deposits 2033, 2034 and 2035.	2 x 1m	North
813	Black & White Print	15	22/07/2005	Deposits 2033, 2034 and 2035.	2 x 1m	North
813	Black & White Print	14	22/07/2005	Pit cut 2036.	1m	East
813	Black & White Print	13	22/07/2005	Pit cut 2036.	1m	East
813	Black & White Print	12	25/07/2005	Post-excavation view of Trench 1.	2 x 1m	West
813	Black & White Print	11	25/07/2005	Post-excavation view of Trench 1.	2 x 1m	West
813	Black & White Print	10	25/07/2005	Pit cut 2037.	1m & 0.5m	East
813	Black & White Print	9	25/07/2005	Pit cut 2037.	1m & 0.5m	East
813	Black & White Print	8	25/07/2005	Linear Feature 1021 and Pit 1022.	1m	West
813	Black & White Print	7	25/07/2005	Linear Feature 1021 and Pit 1022.	1m	West
813	Black & White Print	6	25/07/2005	Trench 1: West Facing Section.	1m	East
813	Black & White Print	5	25/07/2005	Trench 1: West Facing Section.	1m	East
813	Black & White Print	4	26/07/2005	Pit cut 2039.	2 x 1m	East
813	Black & White Print	3	26/07/2005	Pit cut 2039.	2 x 1m	East
813	Black & White Print	2	26/07/2005	Posthole 2041.	0.5m	East
813	Black & White Print	1	26/07/2005	Posthole 2041.	0.5m	East
814	Colour Slide	1	21/07/2005	Identification Shot.	-	-
814	Colour Slide	2	21/07/2005	Posthole 2024 and Pits 2021, 2022, 2023 and 2024.	2 x 1m	North
814	Colour Slide	3	21/07/2005	Rubble/Structure 1006.	1m	East
814	Colour Slide	4	21/07/2005	Rubble/Structure 1006.	1m	East
814	Colour Slide	5	21/07/2005	Pit/Feature cut 1005.	2 x 1m	South
814	Colour Slide	6	21/07/2005	Pit/Feature cut 1005.	2 x 1m	South
814	Colour Slide	7	21/07/2005	Pit cut 2028.	2 x 1m	East
814	Colour Slide	8	21/07/2005	Pit cut 2028.	2 x 1m	East



Film No.	Film Type	Neg. No.	Date	Description	Scale	Facing
814	Colour Slide	9	22/07/2005	Post-excavation view of Trench 4.	2 x 1m	North
814	Colour Slide	10	22/07/2005	Post-excavation view of Trench 4.	2 x 1m	North
814	Colour Slide	11	22/07/2005	Trench 4: South Facing Section.	1.5m	North
814	Colour Slide	12	22/07/2005	Trench 4: South Facing Section.	1.5m	North
814	Colour Slide	13	22/07/2005	Trench 4: North Facing Section.	1.5m	South
814	Colour Slide	14	22/07/2005	Trench 4: North Facing Section.	1.5m	South
814	Colour Slide	15	22/07/2005	Trench 4: West Facing Section.	1.5m	East
814	Colour Slide	16	22/07/2005	Trench 4: West Facing Section.	1.5m	East
814	Colour Slide	17	22/07/2005	Pit cut 2031.	0.5m	South
814	Colour Slide	18	22/07/2005	Pit cut 2031.	0.5m	South
814	Colour Slide	19	22/07/2005	Deposits 1008, 1009, 1012 and 1016.	2 x 1m	West
814	Colour Slide	20	22/07/2005	Deposits 1008, 1009, 1012 and 1016.	2 x 1m	West
814	Colour Slide	21	22/07/2005	Deposits 2033, 2034 and 2035.	2 x 1m	North
814	Colour Slide	22	22/07/2005	Deposits 2033, 2034 and 2035.	2 x 1m	North
814	Colour Slide	23	22/07/2005	Pit cut 2036.	1m	East
814	Colour Slide	24	22/07/2005	Pit cut 2036.	1m	East
814	Colour Slide	25	25/07/2005	Post-excavation view of Trench 1.	2 x 1m	West
814	Colour Slide	26	25/07/2005	Post-excavation view of Trench 1.	2 x 1m	West
814	Colour Slide	27	25/07/2005	Pit cut 2037.	1m & 0.5m	East
814	Colour Slide	28	25/07/2005	Pit cut 2037.	1m & 0.5m	East
814	Colour Slide	29	25/07/2005	Trench 1: West Facing Section.	1m	East
814	Colour Slide	30	25/07/2005	Trench 1: West Facing Section.	1m	East
814	Colour Slide	31	26/07/2005	Pit cut 2039.	2 x 1m	East
814	Colour Slide	32	26/07/2005	Pit cut 2039.	2 x 1m	East
814	Colour Slide	33	26/07/2005	Posthole 2041.	0.5m	East
814	Colour Slide	34	26/07/2005	Posthole 2041.	0.5m	East
815	Colour Print	1	21/07/2005	Identification Shot.	-	-
815	Colour Print	2	21/07/2005	Posthole 2024 and Pits 2021, 2022, 2023 and 2024.	2 x 1m	North
815	Colour Print	3	21/07/2005	Rubble/Structure 1006.	1m	East
815	Colour Print	4	21/07/2005	Rubble/Structure 1006.	1m	East
815	Colour Print	5	21/07/2005	Pit/Feature cut 1005.	2 x 1m	South
815	Colour Print	6	21/07/2005	Pit/Feature cut 1005.	2 x 1m	South
815	Colour Print	7	21/07/2005	Pit cut 2028.	2 x 1m	East
815	Colour Print	8	21/07/2005	Pit cut 2028.	2 x 1m	East
815	Colour Print	9	22/07/2005	Post-excavation view of Trench 4.	2 x 1m	North
815	Colour Print	10	22/07/2005	Post-excavation view of Trench 4.	2 x 1m	North
815	Colour Print	11	22/07/2005	Trench 4: South Facing Section.	1.5m	North
815	Colour Print	12	22/07/2005	Trench 4: South Facing Section.	1.5m	North
815	Colour Print	13	22/07/2005	Trench 4: North Facing Section.	1.5m	South



Film No.	Film Type	Neg. No.	Date	Description	Scale	Facing
815	Colour Print	14	22/07/2005	Trench 4: North Facing Section.	1.5m	South
815	Colour Print	15	22/07/2005	Trench 4: West Facing Section.	1.5m	East
815	Colour Print	16	22/07/2005	Trench 4: West Facing Section.	1.5m	East
815	Colour Print	17	22/07/2005	Pit cut 2031.	0.5m	South
815	Colour Print	18	22/07/2005	Pit cut 2031.	0.5m	South
815	Colour Print	19	22/07/2005	Deposits 1008, 1009, 1012 and 1016.	2 x 1m	West
815	Colour Print	20	22/07/2005	Deposits 1008, 1009, 1012 and 1016.	2 x 1m	West
815	Colour Print	21	22/07/2005	Deposits 2033, 2034 and 2035.	2 x 1m	North
815	Colour Print	22	22/07/2005	Deposits 2033, 2034 and 2035.	2 x 1m	North
815	Colour Print	23	22/07/2005	Pit cut 2036.	1m	East
815	Colour Print	24	22/07/2005	Pit cut 2036.	1m	East
815	Colour Print	25	25/07/2005	Post-excavation view of Trench 1.	2 x 1m	West
815	Colour Print	26	25/07/2005	Post-excavation view of Trench 1.	2 x 1m	West
815	Colour Print	27	25/07/2005	Pit cut 2037.	1m & 0.5m	East
815	Colour Print	28	25/07/2005	Pit cut 2037.	1m & 0.5m	East
815	Colour Print	29	25/07/2005	Linear Feature 1021 and Pit 1022.	1m	West
815	Colour Print	30	25/07/2005	Linear Feature 1021 and Pit 1022.	1m	West
815	Colour Print	31	25/07/2005	Linear Feature 1021 and Pit 1022.	1m	West
815	Colour Print	32	25/07/2005	Linear Feature 1021 and Pit 1022.	1m	West
815	Colour Print	33	25/07/2005	Trench 1: West Facing Section.	1m	East
815	Colour Print	34	25/07/2005	Trench 1: West Facing Section.	1m	East
815	Colour Print	35	26/07/2005	Pit cut 2039.	2 x 1m	East
815	Colour Print	36	26/07/2005	Pit cut 2039.	2 x 1m	East
816	Colour Print	1	26/07/2005	Identification Shot.	-	-
816	Colour Print	2	26/07/2005	Pit cut 1018.	1m	West
816	Colour Print	3	26/07/2005	Pit cut 1018.	1m	West
816	Colour Print	4	26/07/2005	Post-excavation view of Trench 1.	2 x 1m	West
816	Colour Print	5	26/07/2005	Post-excavation view of Trench 1.	2 x 1m	West
816	Colour Print	6	26/07/2005	Post-excavation view of Trench 1.	2 x 1m	East
816	Colour Print	7	26/07/2005	Post-excavation view of Trench 1.	2 x 1m	East
816	Colour Print	8	26/07/2005	Trench 1: North Facing Section.	2 x 1m	South
816	Colour Print	9	26/07/2005	Trench 1: North Facing Section.	2 x 1m	South
816	Colour Print	10	27/07/2005	Pit cut 2039.	2 x 1m	East
816	Colour Print	11	27/07/2005	Pit cut 2039.	2 x 1m	East
816	Colour Print	12	27/07/2005	Trench 1: South Facing Section.	2 x 1m	North
816	Colour Print	13	27/07/2005	Trench 1: South Facing Section.	2 x 1m	North
816	Colour Print	14	27/07/2005	Trench 1: East Facing Section.	2 x 1m	West
816	Colour Print	15	27/07/2005	Trench 1: East Facing Section.	2 x 1m	West
816	Colour Print	16	27/07/2005	Pit/Linear Feature cut 2046	0.5m	North
816	Colour Print	17	27/07/2005	Pit/Linear Feature cut 2046	0.5m	North



Film No.	Film Type	Neg. No.	Date	Description	Scale	Facing
816	Colour Print	18	27/07/2005	Post-excavation view of Trench 2.	2 x 1m	North
816	Colour Print	19	27/07/2005	Post-excavation view of Trench 2.	2 x 1m	North
816	Colour Print	20	27/07/2005	Post-excavation view of Trench 2.	2 x 1m	South
816	Colour Print	21	27/07/2005	Post-excavation view of Trench 2.	2 x 1m	South
816	Colour Print	22	27/07/2005	Trench 2: East Facing Section.	3 x 1m	West
816	Colour Print	23	27/07/2005	Trench 2: East Facing Section.	3 x 1m	West
816	Colour Print	24	27/07/2005	Trench 2: South Facing Section.	2 x 1m	North
816	Colour Print	25	27/07/2005	Trench 2: South Facing Section.	2 x 1m	North
816	Colour Print	26	27/07/2005	Trench 2: West Facing Section.	3 x 1m	East
816	Colour Print	27	27/07/2005	Trench 2: West Facing Section.	3 x 1m	East
816	Colour Print	28	27/07/2005	Trench 2: North Facing Section.	2 x 1m	South
816	Colour Print	29	27/07/2005	Trench 2: North Facing Section.	2 x 1m	South
817	Black & White Print	36	26/07/2005	Identification Shot.	-	-
817	Black & White Print	35	26/07/2005	Pit cut 1018.	1m	West
817	Black & White Print	34	26/07/2005	Pit cut 1018.	1m	West
817	Black & White Print	33	26/07/2005	Post-excavation view of Trench 1.	2 x 1m	West
817	Black & White Print	32	26/07/2005	Post-excavation view of Trench 1.	2 x 1m	West
817	Black & White Print	31	26/07/2005	Post-excavation view of Trench 1.	2 x 1m	East
817	Black & White Print	30	26/07/2005	Post-excavation view of Trench 1.	2 x 1m	East
817	Black & White Print	29	26/07/2005	Trench 1: North Facing Section.	2 x 1m	South
817	Black & White Print	28	26/07/2005	Trench 1: North Facing Section.	2 x 1m	South
817	Black & White Print	27	27/07/2005	Pit cut 2039.	2 x 1m	East
817	Black & White Print	26	27/07/2005	Pit cut 2039.	2 x 1m	East
817	Black & White Print	25	27/07/2005	Trench 1: South Facing Section.	2 x 1m	North
817	Black & White Print	24	27/07/2005	Trench 1: South Facing Section.	2 x 1m	North
817	Black & White Print	23	27/07/2005	Trench 1: East Facing Section.	2 x 1m	West
817	Black & White Print	22	27/07/2005	Trench 1: East Facing Section.	2 x 1m	West
817	Black & White Print	21	27/07/2005	Pit/Linear Feature cut 2046	0.5m	North
817	Black & White Print	20	27/07/2005	Pit/Linear Feature cut 2046	0.5m	North
817	Black & White Print	19	27/07/2005	Post-excavation view of Trench 2.	2 x 1m	North
817	Black & White Print	18	27/07/2005	Post-excavation view of Trench 2.	2 x 1m	North
817	Black & White Print	17	27/07/2005	Post-excavation view of Trench 2.	2 x 1m	South
817	Black & White Print	16	27/07/2005	Post-excavation view of Trench 2.	2 x 1m	South
817	Black & White Print	15	27/07/2005	Trench 2: East Facing Section.	3 x 1m	West
817	Black & White Print	14	27/07/2005	Trench 2: East Facing Section.	3 x 1m	West
817	Black & White Print	13	27/07/2005	Trench 2: South Facing Section.	2 x 1m	North
817	Black & White Print	12	27/07/2005	Trench 2: South Facing Section.	2 x 1m	North
817	Black & White Print	11	27/07/2005	Trench 2: West Facing Section.	3 x 1m	East



Film No.	Film Type	Neg. No.	Date	Description	Scale	Facing
817	Black & White Print	10	27/07/2005	Trench 2: West Facing Section.	3 x 1m	East
817	Black & White Print	9	27/07/2005	Trench 2: North Facing Section.	2 x 1m	South
817	Black & White Print	8	27/07/2005	Trench 2: North Facing Section.	2 x 1m	South
818	Colour Slide	1	26/07/2005	Identification Shot.	-	-
818	Colour Slide	2	26/07/2005	Pit cut 1018.	1m	West
818	Colour Slide	3	26/07/2005	Pit cut 1018.	1m	West
818	Colour Slide	4	26/07/2005	Post-excavation view of Trench 1.	2 x 1m	West
818	Colour Slide	5	26/07/2005	Post-excavation view of Trench 1.	2 x 1m	West
818	Colour Slide	6	26/07/2005	Post-excavation view of Trench 1.	2 x 1m	East
818	Colour Slide	7	26/07/2005	Post-excavation view of Trench 1.	2 x 1m	East
818	Colour Slide	8	26/07/2005	Trench 1: North Facing Section.	2 x 1m	South
818	Colour Slide	9	26/07/2005	Trench 1: North Facing Section.	2 x 1m	South
818	Colour Slide	10	27/07/2005	Pit cut 2039.	2 x 1m	East
818	Colour Slide	11	27/07/2005	Pit cut 2039.	2 x 1m	East
818	Colour Slide	12	27/07/2005	Trench 1: South Facing Section.	2 x 1m	North
818	Colour Slide	13	27/07/2005	Trench 1: South Facing Section.	2 x 1m	North
818	Colour Slide	14	27/07/2005	Trench 1: East Facing Section.	2 x 1m	West
818	Colour Slide	15	27/07/2005	Trench 1: East Facing Section.	2 x 1m	West
818	Colour Slide	16	27/07/2005	Pit/Linear Feature cut 2046	0.5m	North
818	Colour Slide	17	27/07/2005	Pit/Linear Feature cut 2046	0.5m	North
818	Colour Slide	18	27/07/2005	Pit/Linear Feature cut 2046	0.5m	North
818	Colour Slide	19	27/07/2005	Post-excavation view of Trench 2.	2 x 1m	North
818	Colour Slide	20	27/07/2005	Post-excavation view of Trench 2.	2 x 1m	North
818	Colour Slide	21	27/07/2005	Post-excavation view of Trench 2.	2 x 1m	South
818	Colour Slide	22	27/07/2005	Post-excavation view of Trench 2.	2 x 1m	South
818	Colour Slide	23	27/07/2005	Trench 2: East Facing Section.	3 x 1m	West
818	Colour Slide	24	27/07/2005	Trench 2: East Facing Section.	3 x 1m	West
818	Colour Slide	25	27/07/2005	Trench 2: South Facing Section.	2 x 1m	North
818	Colour Slide	26	27/07/2005	Trench 2: South Facing Section.	2 x 1m	North
818	Colour Slide	27	27/07/2005	Trench 2: West Facing Section.	3 x 1m	East
818	Colour Slide	28	27/07/2005	Trench 2: West Facing Section.	3 x 1m	East
818	Colour Slide	29	27/07/2005	Trench 2: North Facing Section.	2 x 1m	South
818	Colour Slide	30	27/07/2005	Trench 2: North Facing Section.	2 x 1m	South

## APPENDIX 5

### Environmental Samples

**Cornucopia, 87 Commercial Street, Norton, North Yorkshire (Site Code MAP 01-07-05)**

Sample No.	Context No.	Description	Type	No. of Tubs
1	1009	Evaluation Trench 1: Deposit, fill of Pit 1011: reddish brown sandy silt with limestone and gravel inclusions. Contained Roman pottery.	GBA	1
2	4014	Evaluation Trench 4: Deposit, fill of ditch 4016: brown silty sand with limestone and gravel inclusions. Contained Roman pottery.	GBA	2
3	4015	Evaluation Trench 4: Deposit, Fill of ditch 4016: pale orange brown silty sand with gravel inclusions. Contained Roman pottery.	GBA	2
4	2033	Evaluation Trench 2: Deposit, fill of Pit 2037: grey slightly silty sand with limestone and gravel inclusions. Contained Roman pottery.	GBA	2
5	2035	Evaluation Trench 2: Deposit, fill of Pit 2036: slightly clay sandy silt with limestone and gravel inclusions	GBA	2
6	1008	Evaluation Trench 1: Deposit, fill of Pit 1010: dark brown silty sand with limestone fragments. Contained Roman pottery.	GBA	2
7	1012	Evaluation Trench 1: Deposit, Fill of Linear Feature 1013: grey brown sandy silt with limestone fragments	GBA	1
8	1014	Evaluation Trench 1: Deposit, fill of Pit 1015: dark brown sandy silt with limestone fragments	GBA	1
9	2038	Evaluation Trench 2: Deposit, Fill of Pit 2039: brown sandy silt with limestone and gravel inclusions	GBA	3
10	1020	Evaluation Trench 1: Deposit, Fill of Pit 1022: grey brown sandy silt with occasional limestone fragments	GBA	1
11	1019	Evaluation Trench 1: Deposit, fill of Pit 1021: grey brown sandy silt with occasional limestone fragments	GBA	1
12	1017	Evaluation Trench 1: Deposit, Fill of Large Pit 1018: dark brown sandy silt with limestone fragments. Contained Animal bone and Roman pottery.	GBA	3
13	2044	Evaluation Trench 2: Deposit, Fill of Pit 2039: brown slightly sandy clay silt with limestone and gravel inclusions	GBA	2
14	2045	Evaluation Trench 2: Deposit, Fill of Pit/Gully 2046: grey brown fine silty sand with limestone and gravel inclusions	GBA	2



## APPENDIX 6

Cornucopia, Commercial Street, Norton, North Yorkshire

### Medieval, Post-medieval and Modern Pottery Assessment

#### Introduction

The assemblage consisted of 221 sherds, of which 106 were medieval, 60 post medieval and 55 'modern' (i.e. 19<sup>th</sup> century or later). The sherds were examined under a hand lens and compared to MAP's type collection of medieval and post-medieval pottery where appropriate.

#### Medieval

Nine fabrics were represented: Splashed, Gritty, Staxton, York Glazed, Brandsby-type, Scarborough, Beverley 2, Hambleton and Humber Wares.

The earliest sherds are in Gritty ware, of which there were 9 sherds. The form represented in this 12/13<sup>th</sup> fabric consisted of the cooking pot, the function shown by external sooting on some sherds (e.g. 2032). The two Splashed ware sherds should be contemporary with the Gritty ware, and indeed the fabric bears close resemblance to the former, being 'Gritty Splashed' rather than the sandier Beverley-1 or more angularly gritted Hallgate, Doncaster types.

The 62 sherds of Staxton Ware form the majority of the medieval assemblage, as might be anticipated given the relative closeness of the production sites. Staxton ware was current throughout the 12<sup>th</sup> and 13<sup>th</sup> centuries, tailing off towards the end of the 14<sup>th</sup> century. Attempts to more closely date sherds by form have proved unsuccessful. Forms represented are predominantly cooking pots, although there an example of a bowl from context 2038. The sherd size varies, but the material is generally moderately sized, and relatively unabraded.

The 9 York Glazed sherds overlap in date with the first two centuries of the Staxton ware date range; the only form represented is the glazed jug. Most of the sherds are small to moderate in size, suggesting a degree of residuality.

Other glazed jugs are represented in Scarborough (2 sherds), Brandsby-type (5) and Beverley-type 2 (5) wares. These sherds are 13/14<sup>th</sup> century in date. There was a Brandsby-type cooking pot base sherd from context 2029.

Late medieval (15<sup>th</sup>/early 16<sup>th</sup> century) material is represented by Humber Ware (11 sherds) and Hambleton ware (1 sherd). These sherds are from large jugs and cisterns; 4 sherds from the same Humber ware jug decorated with a band of incised wavy lines (context 1017) suggest this vessel was broken and lost somewhere in close proximity to where it was found.

Two sherds, although medieval in general type, could not be assigned to specific fabrics.



### ***Post-medieval***

Material dating from the 16<sup>th</sup> to the mid-18<sup>th</sup> centuries is present in moderate amounts. There is a single Cistercian ware sherd, along with 2 Black ware sherds which derived from the former in the 17<sup>th</sup> century. Other 17<sup>th</sup> century material is represented by Red Coarseware (11), Ryedale ware (1) and Midlands Yellow ware (1). From the early/middle part of the 18<sup>th</sup> century date the 6 Marbled Slipware sherds (from dishes) and the 3 Nottingham-type stoneware sherds (from jars and jugs).

The Pearl ware (27 sherds) and Cream ware (7) sherds mark the beginnings of mass-production on a factory scale in the assemblage. Pearl ware forms consist of dishes and cups, with further dishes, and jugs, in Cream ware.

### ***Modern***

The modern material includes transferwares, porcelain, plant pots, and salt- and iron-glazed drink containers. Notable are the two joining sherds of a salt-glazed wine or spirits jar with a slab-seal naming 'Z.T. Welburn, Scarboro' (context 4008); Welburn's were a large 19<sup>th</sup> century drinks supplier.

### **Taphonomy**

There are clues concerning the processes of deposition of the medieval assemblage. Firstly, sherd size is generally moderate or small, with a general lack of cross-fitting and cross-matching, suggesting reworking and redeposition of material, rather than fresh disposal of rubbish. Also, much of the medieval material is residual in later contexts, although contexts such as 2032 and 2042 contain medieval sherds with a relatively small date range, albeit with much residual Roman material.

### **Origins**

The medieval material shows no extra-regional contact, and no imports.

### **Conclusions**

This is a relatively small assemblage, with essentially local or regional origins. The medieval material shows a bias towards food preparation and storage, rather than serving and display, and as such can be said to have originated from a relatively humble household (or households).

### **Recommendations**

The pottery should be retained as it represents a scientifically-recovered assemblage from a medieval settlement that has received scant archaeological attention.