

Fig. 1. Site location





Fig. 2. Site location showing greyscale magnetometer data



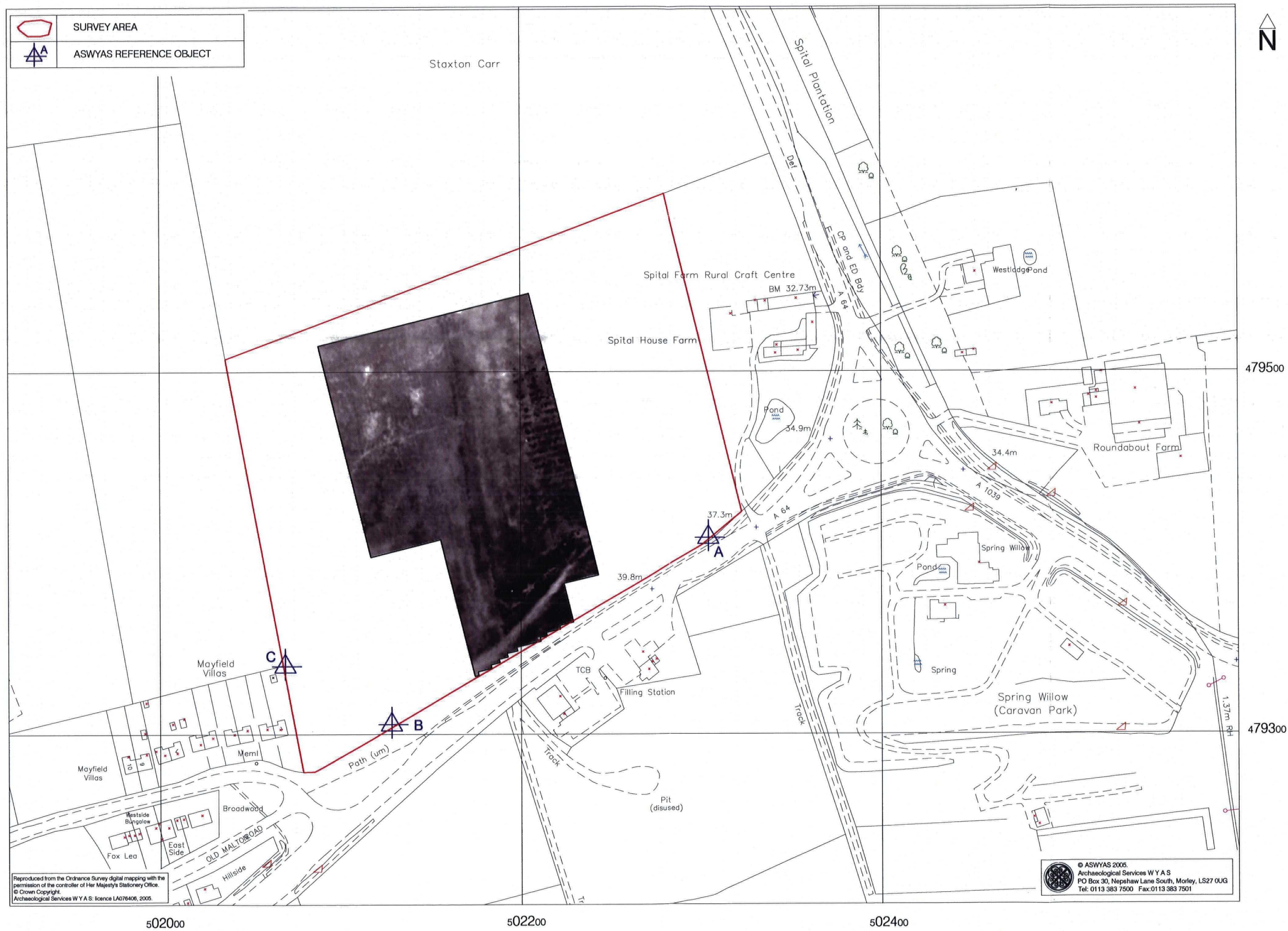


Fig. 3. Site location showing greyscale earth resistance data



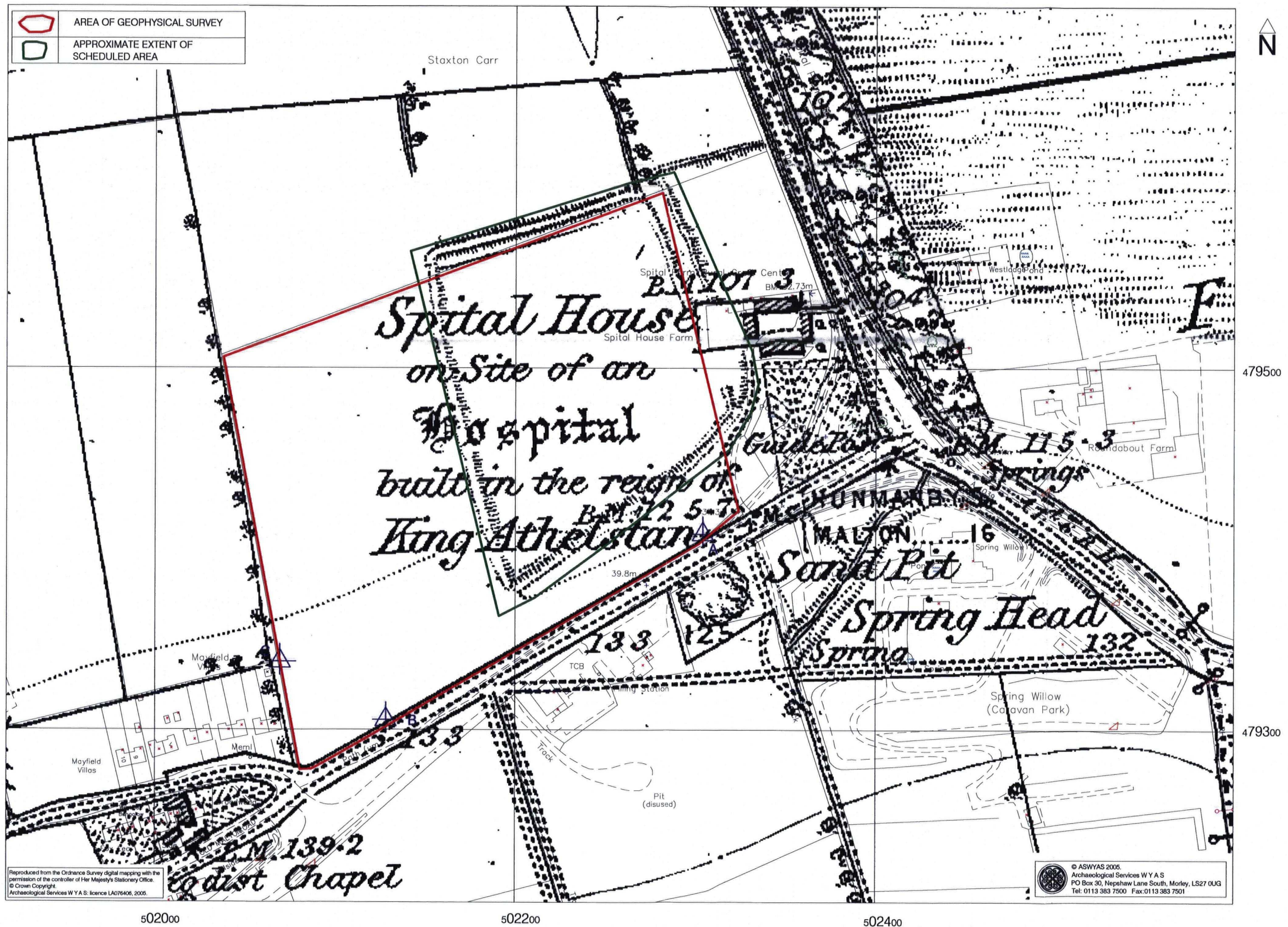


Fig. 4. 1st Edition Ordnance Survey map with modern Superplan map data underlain, showing approximate extent of scheduled area







Fig. 5. Plot showing greyscale magnetometer data

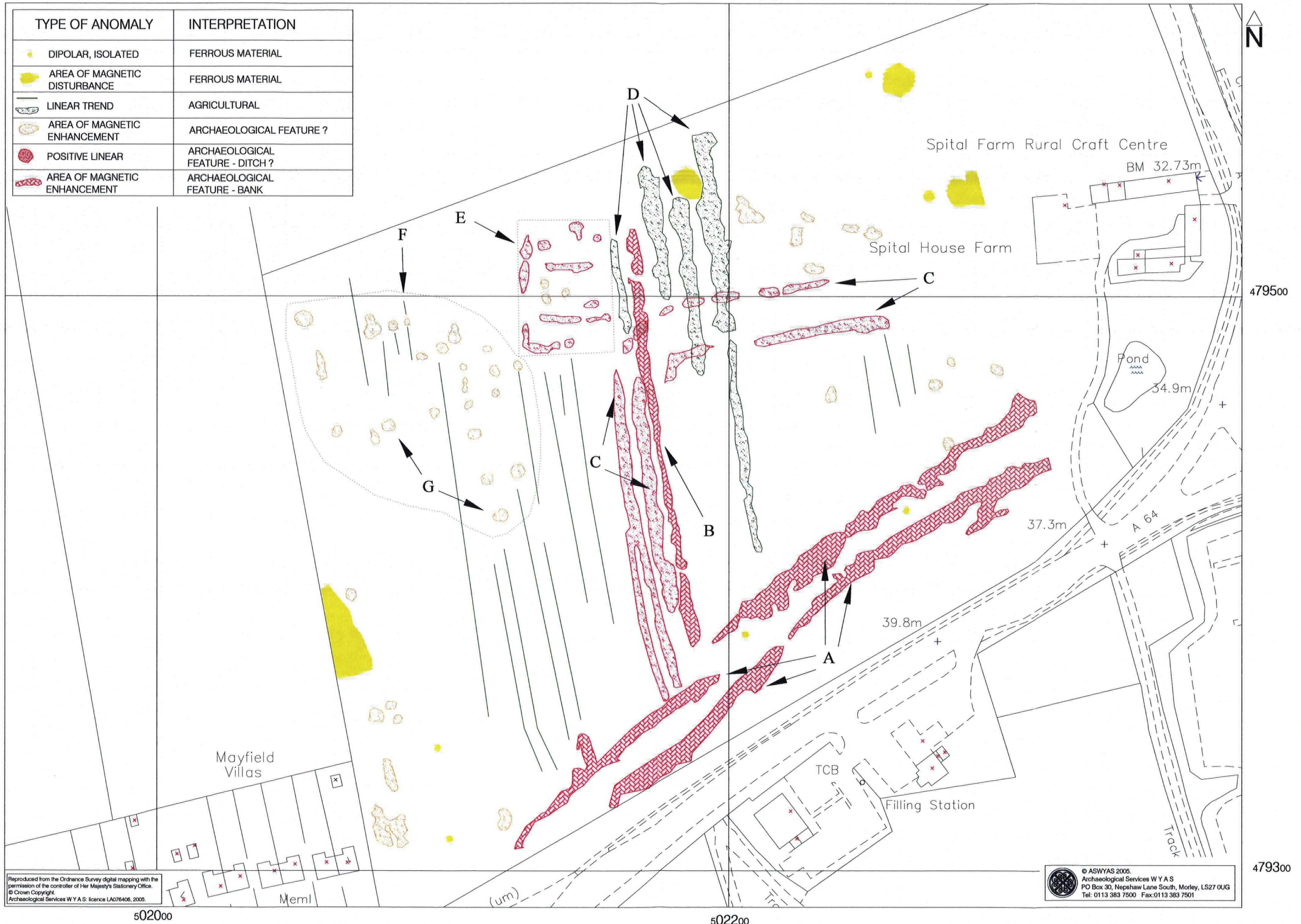


Fig. 6. Interpretation of magnetometer data





Fig. 7. XY trace plot of magnetometer data

0 50m

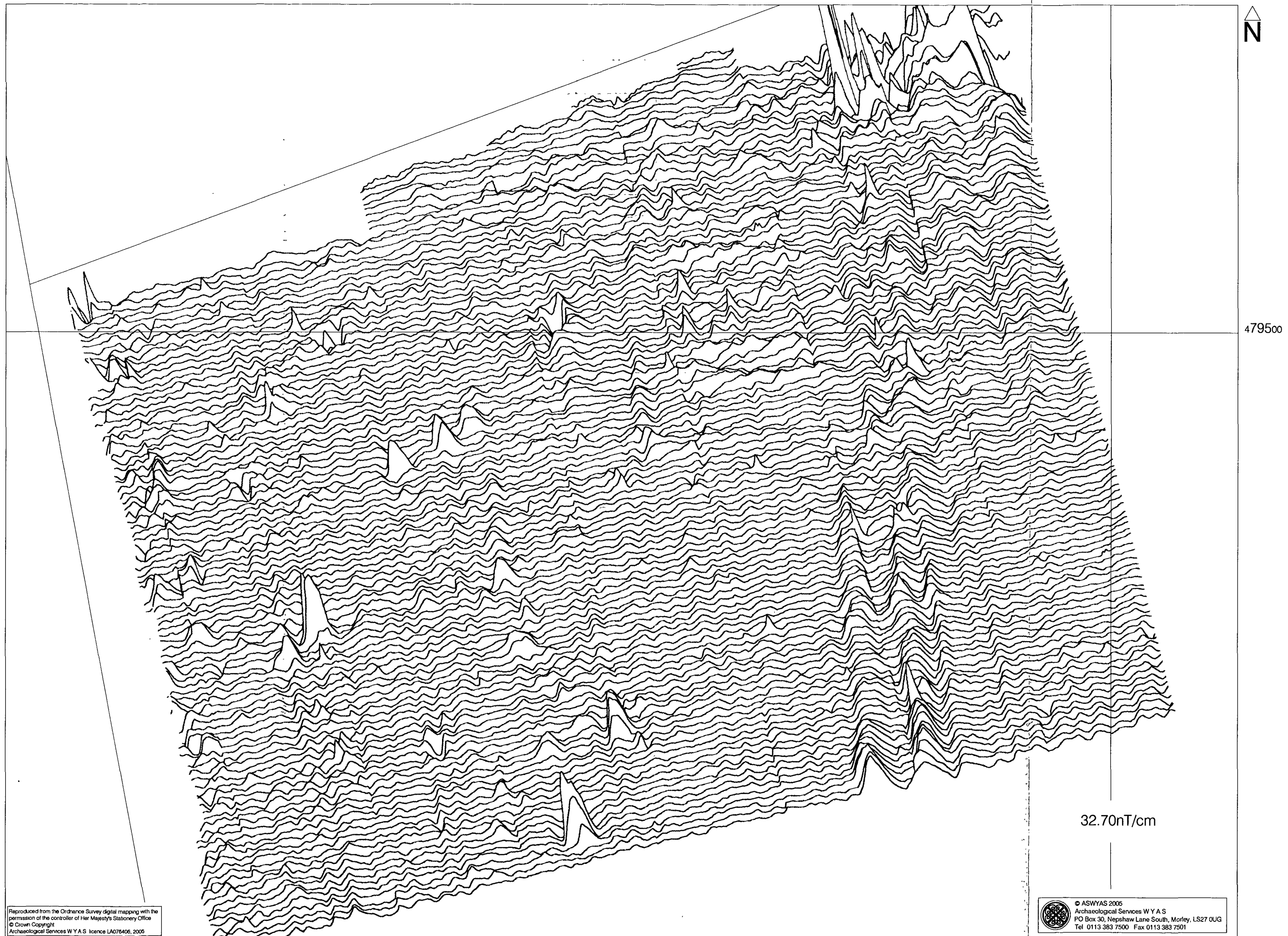


Fig. 8. XY trace plot of possible archaeology





Fig. 9. Plot showing greyscale earth resistance data

Reproduced from the Ordnance Survey digital mapping with the permission of the controller of Her Majesty's Stationery Office  
 © Crown Copyright  
 Archaeological Services WYAS licence LA076406, 2005

© ASWYAS 2005  
 Archaeological Services WYAS  
 PO Box 30, Neshaw Lane South, Morley, LS27 0UG  
 Tel 0113 383 7500 Fax 0113 383 7501



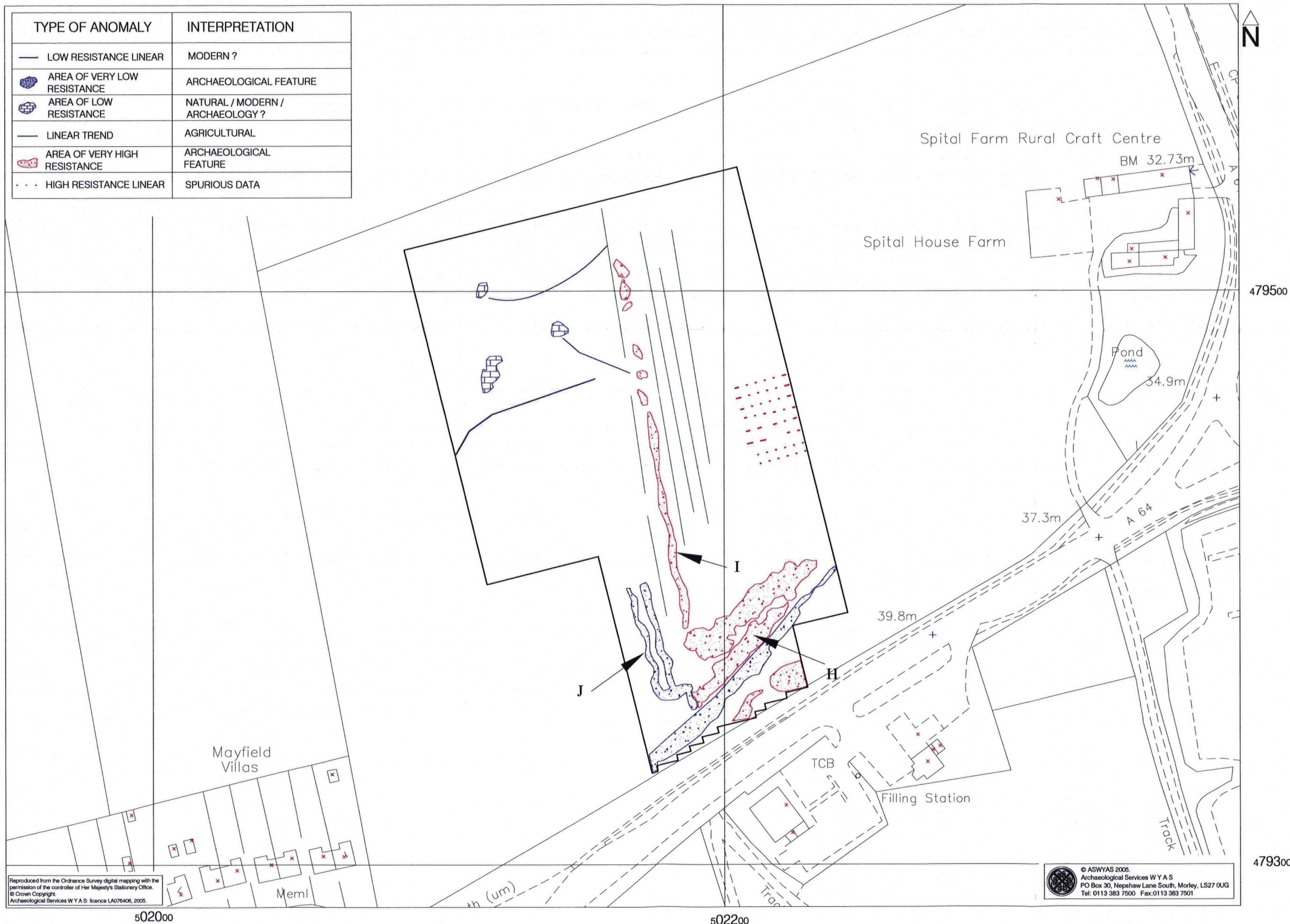


Fig. 10. Interpretation of earth resistance data



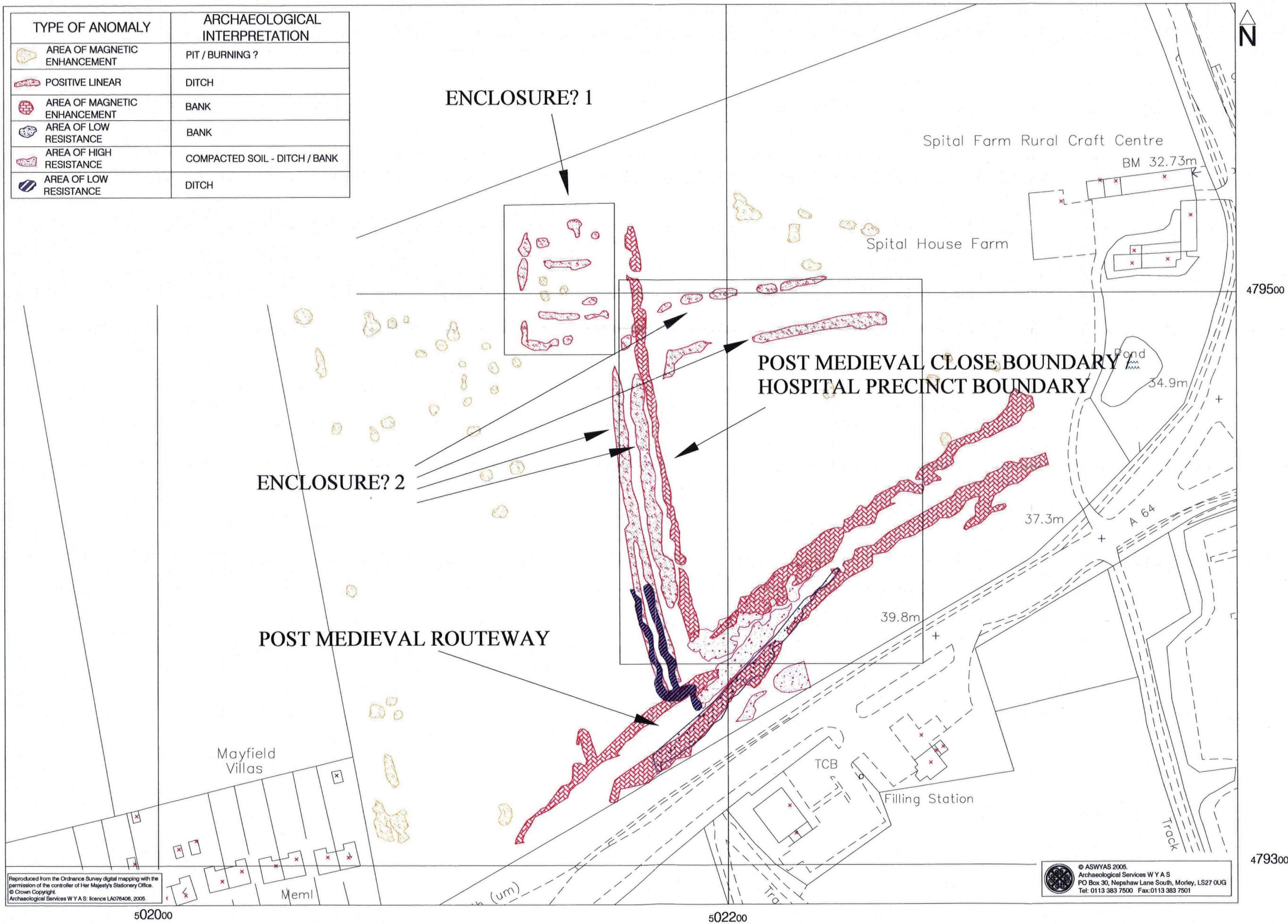


Fig. 11. Archaeological interpretation of selected resistance and magnetic anomalies



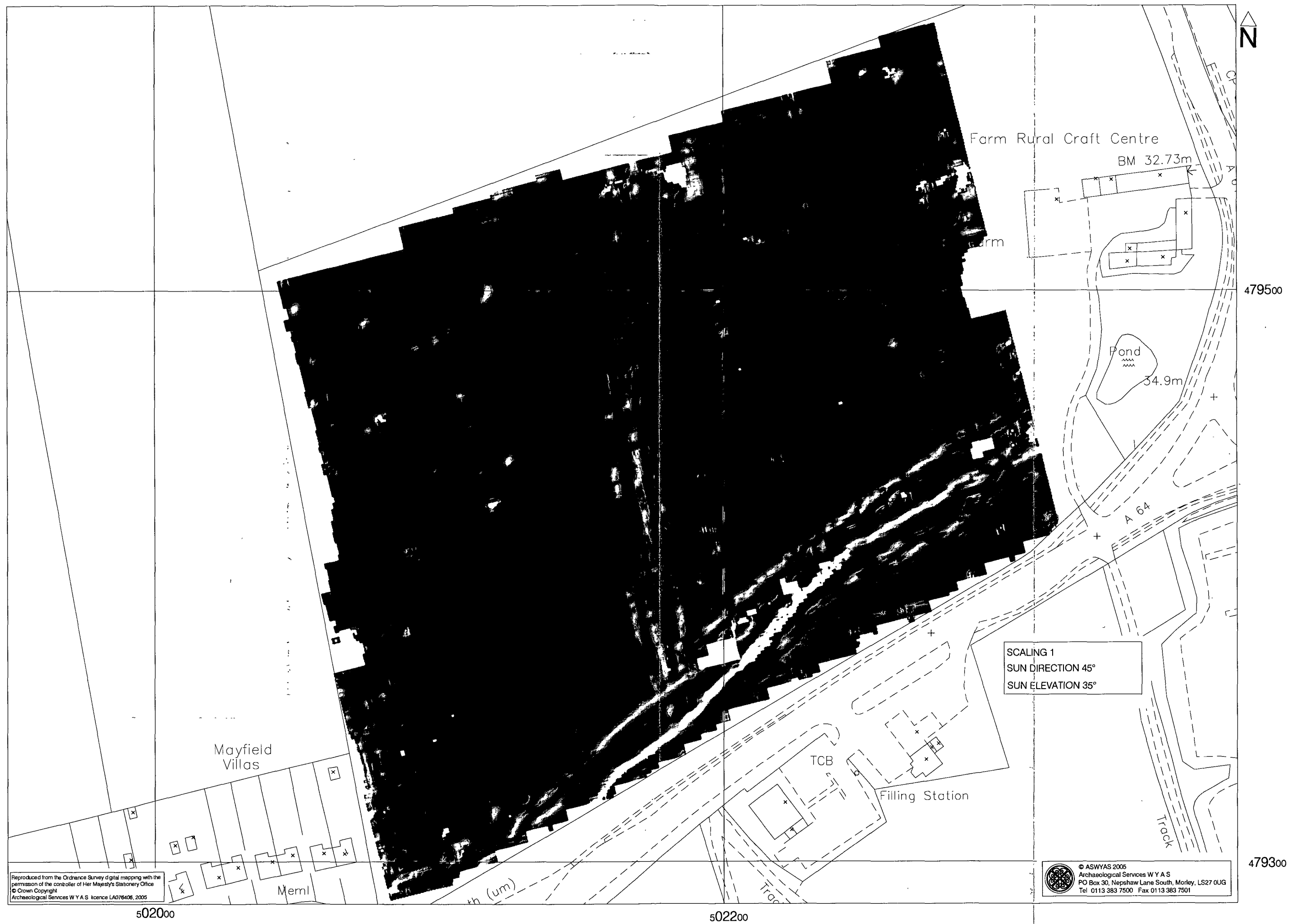


Fig. 12. Relief plot of magnetometer data



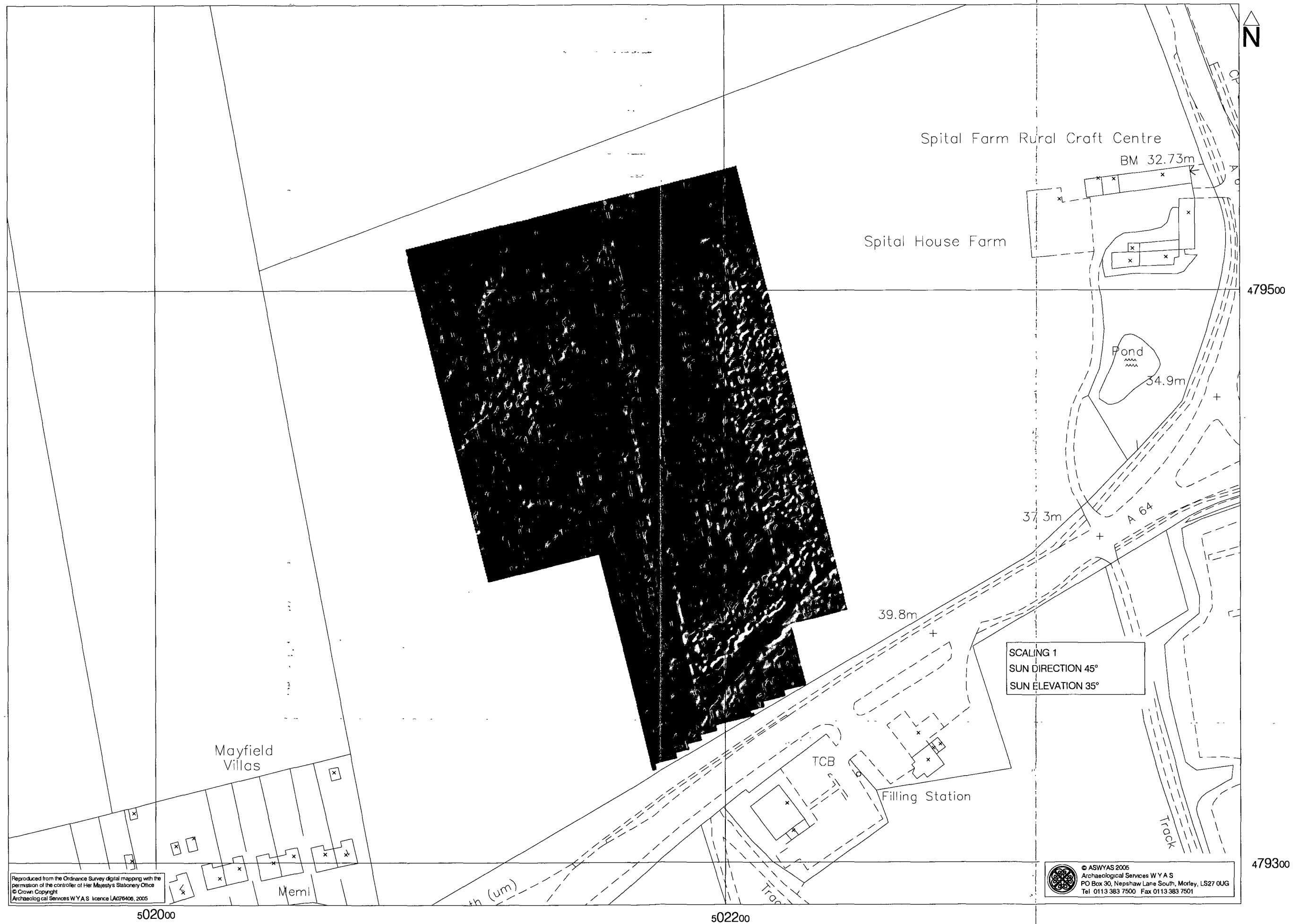


Fig. 13. Relief plot of earth resistance data





*Plate 1. View along southern earthwork looking south-west*



*Plate 2. View along western earthwork looking north*