

**Town Park, Enfield:
Flood Alleviation
Scheme
Heritage Statement**

Client: ENFIELD COUNCIL

AB Heritage Project No:60252

Date:16/01/2018

GLHER Data Licence Number: 13809

Town Park, Enfield: Flood Alleviation Scheme

Heritage Statement

Client	Enfield Council
Project Number	60252
Prepared By	Chloe Smith
Illustrated By	Pighill Archaeological Illustrations
Approved By	Daniel Dodds
GLHER Data Licence Number	13809

Rev Number	Description	Undertaken	Approved	Date
1.0	Final	CS	DD	16/01/2018

This document has been prepared in accordance with AB Heritage standard operating procedures. It remains confidential and the copyright of AB Heritage Limited. Any unauthorised reproduction or usage by any person other than the addressee is strictly prohibited

Enquiries To:

AB Heritage Limited (Head Office)
Jarrow Business Centre, Rolling Mill Road
Jarrow, South Tyneside, NE32 3DT
Email: info@abheritage.co.uk
Tel: 03333 440 206



CONTENTS

1.	Introduction.....	4
1.1	Project Background	4
1.2	Statutory Designations.....	4
1.3	Other Designations	4
1.4	Site Location & Description.....	5
1.5	Proposed Development	5
2.	Aims & Methodology	6
2.1	Aims.....	6
2.2	Consultation.....	6
2.3	Data Collation	6
2.4	Assessment of the Cultural Heritage Resource	7
2.5	Impact Assessment Criteria	8
2.6	Limitations	9
3.	Heritage Review Of Site	11
3.1	Historic Development of Site	11
3.2	Current Condition of Enfield Town Conservation Area, Area E: Town Park	12
3.3	Current Setting of Enfield Town Conservation Area, Area E: Town Park	15
3.4	Significance of Enfield Town Conservation Area, Area E: Town Park	17
4.	Impact Assessment & Recommendations	18
4.1	Predicted Impact of Proposed Development	18
4.2	Outline Recommendations	18
4.3	Conclusion.....	18
5.	References	20
5.1	Documentary & Cartographic Sources	20
5.2	Online Sources	20
5.3	Correspondence	21

FIGURES

- Figure 1. Site Location
- Figure 2. Cultural Heritage Features Map
- Figure 3. Proposed Development Plan

PLATES

- Plate 1. Rocque's Map 1754, showing Park and Site
- Plate 2. Chase Side Estate Plan 1866
- Plate 3. OS 1935 Showing park features and the approximate location of the site

PHOTOS

- Photograph 1. View from Essex Road gate, looking west
- Photograph 2. View from northern part of site, looking south-west
- Photograph 3. View of site from footpath at southern site boundary
- Photograph 4. View from site looking north
- Photograph 5. New River, looking north-west
- Photograph 6. View from east of site looking east towards golf course
- Photograph 7. View westwards from eastern part of the site
- Photograph 8. View looking east along Essex Road
- Photograph 9. View from gap between buildings on south side of Cecil Road

APPENDICES

Appendix 1	Planning Policy	23
Appendix 2	Conservation Area Designation	26
Appendix 3	HER Data.....	28

1. INTRODUCTION

1.1 Project Background

1.1.1 AB Heritage has been commissioned by Enfield Council to produce a Heritage Statement to cover proposed flood alleviation works at Town Park, located within Enfield Town Conservation Area.

1.1.2 This report will form part of a Planning Application.

1.2 Statutory Designations

1.2.1 The site is located within Enfield Town Conservation Area and is within one of the 'key views' identified in the Conservation Area Appraisal (Enfield Council 2015).

1.2.2 The first part of the present Enfield Town Conservation Area (Gentleman's Row and its surroundings) was designated in October 1968. This was enlarged to become the Enfield Town Conservation Area in 1972, and extended again in 1983 and 1984 (Enfield Council 2015).

1.2.1 The factors and key characteristics that give the Enfield Town Conservation Area (as a whole) its special interest are included in Appendix 2. The special interest of the Town Park area (Character Area E) of the Conservation Area has been summarised in the Conservation Area Character Appraisal as follows:

- *The best views are from the adjoining roads, where the park's open spaces provide a fine setting for houses in Cecil Road and Essex Road;*
- *A genteel atmosphere is generated by the informal layout and planting, and low key buildings and play features;*
- *There are strong garden boundary edges on two sides, containing the central space;*
- *Wide views are available to the golf course beyond the tree belt* (Enfield Council 2015).

1.2.2 There are no Listed buildings within the site or immediate vicinity.

1.3 Other Designations

1.3.1 The park is included in Local Register of Historic Parks and Gardens (London Parks and Gardens Trust 2017). The park is summarised as follows:

'Town Park is a surviving fragment along with Bush Hill Park Golf Course of the pre-Elizabethan Old Park estate of Enfield Manor. Part of the estate later became the estates of Chase Side House, which in the C19th had fine pleasure gardens, and Chase Park. In 1894 Enfield UDC purchased some of the estate lands and Town Park was laid out and opened in 1902, a bathing lake opened in 1905. Along the southern boundary runs part of the New River Loop, separating the public park from the private golf course.' (London Parks and Gardens Trust 2017).

1.4 Site Location & Description

- 1.4.1 Town Park is the main public park for Enfield Town. It is located immediately to the southwest of the main shopping centre. The Park comprises 9.5 hectares of land, including 0.2 hectares of the New River and its footpaths.
- 1.4.2 The proposed development site covers an area of c. 6,000 sq m located in the southern part of Town Park adjacent to the Essex Road entrance and tennis courts; situated at NGR: TQ 3260 9610.
- 1.4.3 The site is located in the south-eastern corner of Town Park and is bounded to the north-east by the tennis courts, to the north-west by the path leading from Essex Road, and to the south by the park boundaries. Beyond the site to the south and east are residential properties, while the areas to the north and west are within Town Park.
- 1.4.4 Most of the surrounding residential areas are terraced housing dating from the late 19th century and early 20th century. To the north, c. 360 m from the proposed development site, beyond a single line of residential properties, is the Palace Gardens shopping centre, which is part of the town centre of Enfield. On the south and west the park is bounded by the New River Loop. Beyond the river lies the Bush Hill Park golf course.

1.5 Proposed Development

- 1.5.1 The proposal is to create a combined flood storage and wetland area within Town Park as part of the Enfield Town Flood Alleviation Scheme. Spoil excavated from the wetland features will be used to construct a low, natural earth bund which will retain flood water within Town Park during extreme rainfall events, and help to protect properties downstream. The wetlands will receive water from surface water sewers, and the existing swale within the park.
- 1.5.2 The area to be created to form the wetland is approximately 1000 m².

2. AIMS & METHODOLOGY

2.1 Aims

- 2.1.1 NPPF 128 requires local planning authorities to request descriptions on the significance of any heritage assets affected by a proposal, including any contribution made by their setting. This states that:

'The level of detail should be proportionate to the assets' importance and no more than is sufficient to understand the potential impact of the proposal on their significance.'

- 2.1.2 The aim of this report is to facilitate such a process by understanding the historical development of the application site and the likely impact upon any surviving heritage assets resulting from the proposed development, devising appropriate mitigation responses where necessary.

2.2 Consultation

- 2.2.1 During consultation with Chloe Smith (Heritage Consultant; AB Heritage), Christine White (Heritage Projects Manager; Enfield Council) noted that the Conservation Area Appraisal and Management Plan (Enfield Council 2015) should be considered as part of this report.

2.3 Data Collation

- 2.3.1 The assessment has been carried out, in regard to the collation of baseline information, in line with the Chartered Institute for Archaeologists' Standard and Guidance for Historic Environment Desk-Based Assessment (January 2017) and the Archaeological Investigation and Recording of Standing Buildings and Structures (December 2014).

- 2.3.2 This assessment includes relevant information contained in various statutory requirements, national, regional and local planning policies and professional good practice guidance, including:

- Ancient Monuments and Archaeological Areas Act, 1979
- Planning (Listed Buildings and Conservation Areas) Act, 1990
- The National Planning Policy Framework, 2012

- 2.3.3 The Greater London Historic Environment Record is the primary source of information concerning the current state of archaeological and architectural knowledge in this area. The HER Commercial dataset search reference number for this project is 13809. The HER information can be viewed in Appendix 3.

- 2.3.4 This information was supported by examination of data from a wide range of other sources, principally:

- Heritage Gateway for information from the Historic England National Monuments Record;

- Pastscape and other research resources, including Discovery: The National Archives;
- The Historic England website professional pages, particularly the National Heritage List for England;
- A site visit was undertaken on 4th January 2018. During the site visit, an inspection of the site was made, and principal areas and significant details were noted and digitally photographed;
- Additional relevant documentary resources at the Enfield Local Studies and Archives (hereafter ELSA) were accessed on the 4th January 2018. The excerpts from the maps presented here as plates, were collected from the Enfield Local Studies and Archives.

2.3.5 Information from these sources was used to understand:

- Information on statutory and non-statutory designated sites
- Readily accessible information on the proposed development site's history from readily available historic maps and photographs
- Any information on the proposed development site contained in published and unpublished archaeological and historical sources, including any previous archaeological investigations undertaken within the study area
- A greater understanding of key cultural heritage issues of the proposed development site and surrounding area, developed through the onsite walkover, including information on areas of past impact within the proposed development site boundary
- The impact of the proposed development on the known and potential cultural heritage resource, resulting in the formulation of a mitigation strategy, where required, which appropriately targets any future works to those required to gain planning consent.

2.4 Assessment of the Cultural Heritage Resource

- 2.4.1 The importance of identified cultural heritage resources is determined by reference to existing designations (Table 1, below).

Table 1: Assessing the Importance of a Cultural Heritage Site

SCALE OF SITE IMPORTANCE	
NATIONAL	The highest status of site, e.g. Scheduled Monuments (or undesignated assets of schedulable quality and importance). Grade I and Grade II* Listed Buildings. Other listed buildings that can be shown to have exceptional qualities in their fabric or historical associations not adequately reflected in the listing grade. Conservation Areas containing very important buildings. Undesignated structures of clear national importance. Extremely well preserved historic landscape, whether inscribed or not, with exceptional coherence, time depth, or other critical factor(s).
REGIONAL	Grade II Listed Buildings or other designated or undesignated archaeological sites (in addition to those listed above), or assets of a reasonably defined extent and significance, or reasonable evidence of occupation / settlement, ritual, industrial activity etc. Examples may include areas containing buildings that contribute significantly to its historic character, burial sites, deserted medieval villages, Roman roads and dense scatter of finds.
LOCAL	Evidence of human activity more limited in historic value than the examples above, or compromised by poor preservation and/or survival of context associations, though which still have the potential to contribute to local research objectives. Examples include sites such as 'locally designated' buildings or undesignated structures / buildings of limited historic merit, out-of-situ archaeological findspots / ephemeral archaeological evidence and historic field systems and boundaries etc.
NEGLIGIBLE	Assets with very little or no surviving archaeological interest. Examples include destroyed antiquities, structures of almost no architectural / historic merit, buildings of an intrusive character or relatively modern / common landscape features such as quarries, drains and ponds etc.
UNKNOWN	Insufficient information exists to assess the importance of a feature (e.g. unidentified features on aerial photographs).

- 2.4.2 For some types of finds or remains there is no consistent value and the importance may vary, for example Grade II Listed Buildings and Conservation Areas. For this reason, adjustments are occasionally made, where appropriate, based on professional judgement.

2.5 Impact Assessment Criteria

- 2.5.1 The magnitude of impact upon the archaeological and heritage resource, which can be considered in terms of direct and indirect impacts, is determined by identifying the level of effect from the proposed development upon the baseline conditions of the site and the cultural heritage resource identified. The criteria for assessing the magnitude of impact are set out in Table 2 (below).
- 2.5.2 In certain cases, it is not possible to confirm the magnitude of impact upon a cultural heritage resource, especially where anticipated buried deposits exist. Where possible a professional judgement as to the scale of such impacts is applied to enable the likely 'Significance of Effects' to be established; however, a magnitude level of 'uncertain' is included for situations where it is simply not appropriate to make such a judgement at this stage of works.

Table 2: Criteria for Determining Magnitude of Beneficial or Adverse Impact

IMPACT LEVEL	DEFINITION
HIGH	Changes to most or all of the key archaeological or key heritage baseline elements, or comprehensive changes to the setting of such key features that lead to total or almost complete alteration of a features physical structure, dramatic visual alteration to the setting of a heritage asset, or almost comprehensive variation to aspects such as noise, access, or visual amenity of the historic landscape.
MEDIUM	Changes to many key archaeological materials/historic elements, or their setting, such that the baseline resource is clearly modified. This includes considerable visual change to many key aspects of the historic landscape, noticeable differences in noise or sound quality, and considerable changes to use or access changes to key historic landscape elements
LOW	Detectable impacts which alter the baseline condition of an archaeological or heritage receptor to a slight degree – e.g. a small proportion of the surviving heritage resource is altered; slight alterations to the setting or structure, or limited changes to aspects such as noise levels, use or access that results in limited changes to historic landscape character.
NEGLIGIBLE	Barely distinguishable change from baseline conditions, where there would be very little appreciable effect on a known site, possibly because of distance from the development, method of construction or landscape or ecological planting, that are thought to have no long term effect on the historic value of a resource.
UNCERTAIN	Extent / nature of the resource is unknown and the magnitude of change cannot be ascertained.

- 2.5.3 The overall Significance of Effects from the proposed development upon the Cultural Heritage Resource is determined by correlating the magnitude of Impact against value of the Cultural Heritage resource. Table 3 highlights the criteria for assessing the overall Significance of Effects. Where effects are moderate or above these are classified as significant.

Table 3: Significance of Effects

IMPORTANCE	MAGNITUDE			
	HIGH	MED	LOW	NEG
NATIONAL	Severe	Major	Mod	Minor
REGIONAL	Major	Mod	Minor	Not Sig.
LOCAL	Mod	Minor	Minor	Not Sig.
NEGLIGIBLE	Minor	Not Sig.	Not Sig.	Nt.

Not Sig. = Not Significant; Nt. = Neutral; Mod = Moderate; Ext. = Extensive

2.6 Limitations

- 2.6.1 It should be noted that the report has been prepared under the express instruction and solely for the use of Enfield Council, and any associated parties they elect to share this information with. Measurements and distances referred to in the report should be taken as approximations only and should not be used for detailed design purposes.

- 2.6.2 All the work carried out in this report is based upon the professional knowledge and understanding of AB Heritage on current (January 2018) and relevant United Kingdom standards and codes, technology and legislation. Changes in these areas may occur in the future and cause changes to the conclusions, advice, recommendations or design given. AB Heritage does not accept responsibility for advising the client's or associated parties of the facts or implications of any such changes in the future.
- 2.6.3 This report has been prepared utilising factual information obtained from third party sources. AB Heritage takes no responsibility for the accuracy of such information. It should also be noted that this report represents an early stage of a phased approach to assessing the archaeological and cultural heritage resource of the application site to allow the development of an appropriate mitigation strategy, should this be required. It does not comprise mitigation of impacts in itself.

3. HERITAGE REVIEW OF SITE

3.1 Historic Development of Site

- 3.1.1 Enfield is first recorded in the Domesday Survey of 1066 when the manors of Enfield and Edmonton were both held by the same Royal official. Settlement was mainly focussed in the east of the borough, with agriculture, roads and settlement concentrated on the slopes of the Lea valley and with marshy ground along the Lea providing pasture. Much of the road network and the layout of Enfield town centre survives from the medieval period but the only surviving structural remains are parts of the church. A relatively large number of high quality small and medium sized houses from the 16th to early 19th century survive in the town centre (LB Enfield 2008).
- 3.1.2 Enfield Chase, located to the west of the town, was a royal hunting park thought to be of pre-conquest origin. It was enclosed by the mid-12th century and grew to occupy most of the north-western part of the borough (LB Enfield 2008). Town Park is a surviving fragment (along with Bush Hill Park Golf Course located to the west of Town Park), of the Old Park estate that dated back to pre-Elizabethan times, part of which later became the estates of Chase Side House and Chase Park (London Parks and Gardens Trust 2017).
- 3.1.3 Rocque's Map of Middlesex (Plate 1), surveyed in 1754, shows the area of Town Park within undeveloped plots divided by tree-lined field boundaries, located to the south west of the settlement of Enfield.

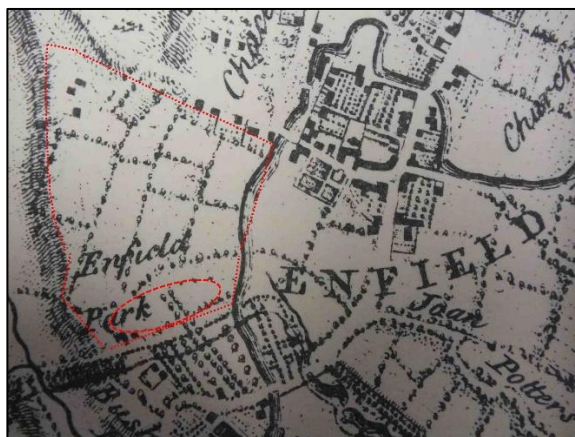


Plate 1. Rocque's Map 1754, showing Park and Site

- 3.1.4 The proximity to London made Enfield an attractive suburban retreat for the wealthy and many suburban villas in extensive grounds were established between the 17th and early 19th centuries, many of which are now nationally and locally designated Historic Parks and Gardens. One such estate was Chase Side House (now the site of Enfield Central Library) built in 1826 and demolished in 1900. The area now covered by Town Park was once within the parkland of this estate, as shown on a plan (Plate 2) to accompany sales particulars for Chase Side House dating from 1866 (ELSA: 1866/5/2). The plan shows a lake in the centre of the park and two smaller ponds in the east of the park (to the north of the proposal site), indicating that this area may historically have been wetter ground. The part of Chase Side

House adjacent to the New River was bought by public subscription and opened as Town Park in July 1902. In 1905, the lake was converted for swimming (Enfield Council 2015).

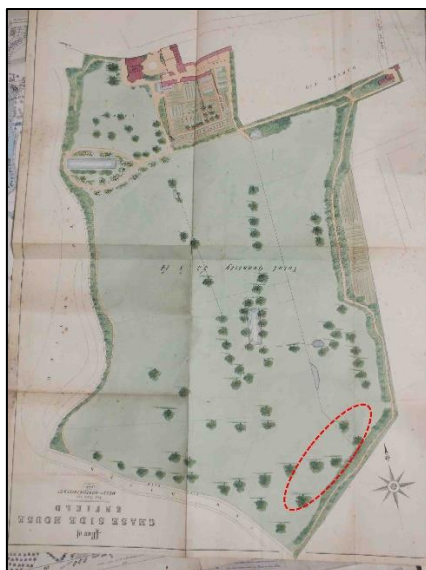


Plate 2. Chase Side Estate Plan 1866

- 3.1.5 The New River, an aqueduct transporting drinking water from Amwell Springs in Hertfordshire through Enfield to London, was constructed between 1609 and 1613 and has been described as 'a fascinating and unusual feat of engineering' (LB Enfield 2008). In 1859 the portion of the Loop around Enfield village was straightened, and in 1890 it was piped underground thereby making this stretch redundant. It was saved from being infilled by a public campaign that lobbied for its preservation for its ornamental value (London Parks and Gardens Trust 2017). Part of the old course of the New River is located c.35 m to the west of the site.
- 3.1.6 By 1935 the park had the features and appearance it has in the present, as shown on the OS map of 1935 (Plate 3).

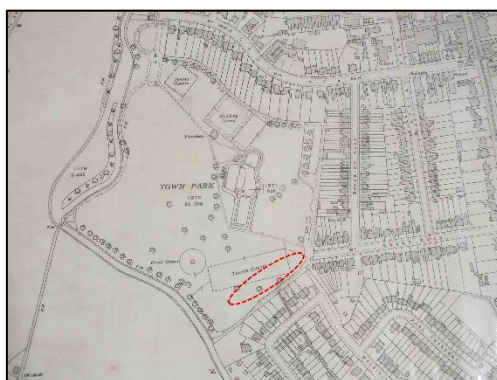


Plate 3. OS 1935 Showing park features and the approximate location of the site. OS Licence 100050237

3.2 Current Condition of Enfield Town Conservation Area, Area E: Town Park

- 3.2.1 Town Park is predominantly grassed and is crossed by footpaths. While the majority of the grass is cut short, typical of town parks, some areas have been less attended to, with longer

grass and scrubby vegetation, including the site area proposed for the flood alleviation scheme in the south-east of the park.

- 3.2.2 The proposed site area currently has a tarmacadam footpath on the northern side and southern side, allowing access from the Essex Road entrance to other areas of the park. There is a small area of disabled parking spaced adjacent to the Essex Road gate (Photo 1).



Photo 1: View from Essex Road gate, looking west

- 3.2.3 The ground in the site area was wet at the time of site visit (4th January 2018). There is an overflow ditch in this area, providing an outlet for excess water from the central pond/lake, which curves around to create a small island with young trees in the centre (Photos 2 & 3). A public information board describes this area as the ‘downstream wetland area’ and notes that the soil here is permeable and during dry spells the water will soak into the ground, while in wet periods, the water will drain into the Saddlers Mill Stream culvert which flows below ground. On the southern side of the site area is a bank of earth with low-lying vegetation.



Photo 2: View from northern part of site, looking south-west



Photo 3: View of site from footpath at southern site boundary

- 3.2.4 Directly to the north of the site area are enclosed tennis / basketball courts, surrounded by blue fencing (Photos 3 & 4).
- 3.2.5 In the northern part of the park is a pavilion, c. 250 m from the proposal site, adjacent to grassed sports pitches and a children's play area. In the middle of the park is a lake, c. 165 m north east of the proposal site.



Photo 4: View from site looking north

- 3.2.6 The New River is located c. 35 m to the west of the proposed site area. The banks of the river are covered by vegetation and trees, particularly on the western bank (golf club side). A footpath runs alongside, and a footbridge crosses the river at the eastern corner of the park (Photo 5).



Photo 5: New River, looking north-west

- 3.2.7 Access points for the park are from Essex Road on the eastern boundary; from Cecil Road at the northern boundary and along the footpath beside the New River at the western boundary.

3.3 Current Setting of Enfield Town Conservation Area, Area E: Town Park

- 3.3.1 The western and south-western boundaries of the park are formed by the course of the New River, beyond which is a golf course. The ground rises to the south-west, enabling views across the park from the New River at the park boundary and partial views from the golf course beyond, although views from the golf course towards the proposed site area are obscured by trees. From the park there are no views to the south-west or west beyond the golf course.



Photo 6: View from east of site looking east towards golf course

- 3.3.2 Immediately the east and south-east of the park are residential streets characterised by semi-detached housing of late 19th century and early 20th century date, although views looking out from the park towards the east are dominated by high-rise modern apartment blocks. There are views from the Victorian houses along Essex Road directly into the site. The Conservation Area Appraisal notes that there are *'long views across the park from the points at which the adjoining roads and paths either end, or bend'* and that the best inward view is from the end

of Essex Road' (Enfield Council 2015). The ground slopes down from Essex Road enabling views across the park.

- 3.3.3 The Conservation Area Appraisal has identified the '*incongruous bright blue fenced ball park area*', located adjacent to the proposed site as an intrusion on the views within Enfield Town Conservation Area, particularly those from the Essex Road gate (Enfield Council 2015).



Photo 7: View westwards from eastern part of the site



Photo 8: View looking east along Essex Road

- 3.3.4 The rear gardens of properties on Uvedale Road, to the south-east of the site, back directly onto the park but are partially shielded by the high brick wall and trees at the park boundary.
- 3.3.5 To the north of the park is Enfield town centre, characterised by mixed development including a modern shopping centre / multi-storey car park, library and church buildings, along with some older residential properties. There are no views of the park from Church Road or from

the majority of Cecil Road. A gap in development on the southern side of Cecil Road provides limited views into the park from that location.



Photo 9: View from gap between buildings on south side of Cecil Road

3.4 Significance of Enfield Town Conservation Area, Area E: Town Park

- 3.4.1 While Historic England uses the terminology ‘Significance’ to describe the value of a heritage asset, AB Heritage has elected to use the ‘Importance’ in the text below, this is to avoid any confusion between the assessment of Significance of Effect on our Table 3 and value judgement of a heritage asset.
- 3.4.2 As a part of Enfield Town Conservation Area, Town Park is considered to be a heritage asset of Regional Importance (in line with Table 1).
- 3.4.3 The park has a high communal value; it is a shared public space, with public access and facilities and also contains memorial plaques. The communal value of the heritage asset is considered critical to the importance of the heritage asset.
- 3.4.4 As a green space in an urban context, the park itself contributes to the importance of the setting of the wider Conservation Area. The Conservation Area Character Appraisal concludes that *‘the park is a somewhat neutral space, neither an urban nor a country park, and that its main values visually are as a foil and contrast to other areas of the townscape’* (Enfield Council 2015). The aesthetic value of the park is considered to contribute to the setting of the Conservation Area.
- 3.4.5 Town Park retains some historical and evidential value as a surviving remnant of earlier parks, although Chase Side House itself has been demolished and the original lakes / features shown on historic mapping do not survive. Modern development in the wider area has encroached on the views from the park to the wider landscape. Therefore, it is considered that the historical and evidential value does form a key component of the importance of the heritage asset.

4. IMPACT ASSESSMENT & RECOMENDATIONS

4.1 Predicted Impact of Proposed Development

- 4.1.1 The proposal is to create a combined flood storage and wetland area within Town Park as part of the Enfield Town Flood Alleviation Scheme. Spoil excavated from the wetland features will be used to construct a low, natural earth bund which will retain flood water within Town Park during extreme rainfall events, and help to protect properties downstream. The wetlands will receive water from surface water sewers, and the existing swale within the park.
- 4.1.2 There are no surviving historical features, which contribute to the heritage value of the Conservation Area noted within the site area.
- 4.1.3 The area proposed for this scheme is already in use as a downstream wetland area comprising a raised bank and overflow ditch, with some low-lying vegetation and scrubby grass. The nearby New River provides a similar example of a water feature within the park landscape. The proposal, therefore, does not constitute a change to the character of the Conservation Area.
- 4.1.4 The proposal is therefore considered to have No Impact upon the setting of Town Park or the surrounding Conservation Area.
- 4.1.5 The Conservation Area appraisal mentions the importance of the view from Essex Road into Town Park and identifies the blue fenced tennis / basketball court directly to the north-east of the site as an intrusion into this view. The proposal includes a planting scheme of wild flowers and wetland planting, which may help soften the views towards the fenced areas, at least during the flowering season.
- 4.1.6 The proposal is therefore considered to have low beneficial indirect impact upon the views from Essex Road, as noted in the Conservation Area Appraisal.
- 4.1.7 Based on the range of impacts above (ranging from no impact to low beneficial impact), there would be a corresponding level of effect. Overall, the proposed change upon the setting of this heritage asset of Regional Importance will range between no change to a minor beneficial Significance of Effect (in line with Table 3).

4.2 Outline Recommendations

- 4.2.1 No further heritage work is recommended as part of this application.

4.3 Conclusion

- 4.3.1 Enfield Council proposes to carry out flood alleviation work at a site in Enfield Town Park. The work is to include the creation of a low-lying collection feature for excess rain water, in the form of an area of wetland enclosed within an earthen bund.
- 4.3.2 The site lies within the Enfield Town Conservation Area, Area E: Town Park, which is considered to be of Regional Importance.
- 4.3.3 The proposed work is considered to have no impact upon the setting of the Conservation Area. It is considered that planting associated with the proposed wetland features will offer a

degree of screening to the incongruous blue-fenced sports pitches adjacent to the development site and visible from Essex Road, thus providing an indirect beneficial Significance of Effects.

- 4.3.4 No further heritage work is recommended as part of this application. The final decision regarding the requirement for further investigation lies with the LPA.

5. REFERENCES

5.1 Documentary & Cartographic Sources

- Historic England, 2015, Photographing Historic Buildings Notes 2015
- ELSA, 1866, Chase Side House Estate Plan
- OS, 1935, 1: 1,250 Enfield and Edmonton

5.2 Online Sources

- Ancient Monuments and Archaeological Areas Act 1979
<http://www.legislation.gov.uk/ukpga/1979/46/contents>
- Chartered Institute for Archaeologists Standard and Guidance for Historic Environment Desk Based Assessment http://www.archaeologists.net/sites/default/files/node-files/CIfAS&GDBA_2.pdf
- Chartered Institute for Archaeologists Standard and Guidance for the Archaeological Investigation and Recording of Standing Buildings and Structures
http://www.archaeologists.net/sites/default/files/CIfAS&GBuildings_1.pdf
- Enfield Council, 2015, Enfield Town Conservation Area Character Appraisal.
- Grid Reference Finder, 2016 <http://www.gridreferencefinder.com/>
- Heritage Gateway, 2016 <http://www.heritagegateway.org.uk/Gateway/Results.aspx>
- Historic England, 2016, Understanding Historic Buildings, A Guide to Good Recording Practice <https://content.historicengland.org.uk/images-books/publications/understanding-historic-buildings/heag099-understanding-historic-buildings.pdf/>
- Historic England, 2015, The Setting of Heritage Assets, Historic Environment Good Practice Advice in Planning: 3 <https://content.historicengland.org.uk/images-books/publications/gpa3-setting-of-heritage-assets/gpa3.pdf/>
- Historic England, 2008 Conservation Principles, Policies & Guidance
<https://content.historicengland.org.uk/images-books/publications/conservation-principles-sustainable-management-historic-environment/conservationprinciplespoliciesguidanceapr08web.pdf/>.
- London Borough of Enfield, 2008, Enfield Heritage Strategy: 'A Living Landscape', Drafted by The Paul Drury Partnership and Stuart Davies Associates, Approved 17th September 2008.
- National Planning Policy Framework
https://www.gov.uk/government/uploads/system/uploads/attachment_data/file/6077/2116950.pdf
- Planning (Listed Buildings and Conservation Areas) Act, 1990
http://www.legislation.gov.uk/ukpga/1990/9/pdfs/ukpga_19900009_en.pdf

5.3 Correspondence

- December 2017, Chloe Smith (AB Heritage) & Christine White (Heritage Projects Manager; Enfield Council)

Appendices

Appendix 1 Planning Policy

Introduction

The following section highlights the key planning and legislative framework relevant to this project, including legislative framework, national planning policy and relevant sector guidance.

Statutory Protection for Heritage Assets

Current legislation, in the form of the Ancient Monuments and Archaeological Areas Act 1979, provides for the legal protection of important and well-preserved archaeological sites and monuments through their addition to a list, or 'schedule' of archaeological monuments by the Secretary of State for Culture, Media and Sport. This necessitates the granting of formal Scheduled Monument Consent for any work undertaken within the designated area of a Scheduled Ancient Monument.

Likewise, structures are afforded legal protection in the form of their addition to 'lists' of buildings of special architectural or historical interest. The listing of buildings is carried out by the Department of Culture, Media and Sport under the Planning (Listed Buildings and Conservation Areas) Act, 1990. The main purpose of the legislation is to protect buildings and their surroundings from changes that would materially alter the special historic or architectural value of the building or its setting. This necessitates the granting of formal Listed Building Consent for all works undertaken to or within the designated curtilage of a Listed Building. This legislation also allows for the creation and protection of Conservation Areas by local planning authorities to protect areas and groupings of historical significance.

The categories of assets with some form of legal protection have been extended in recent years, and now include Registered Parks and Gardens, and Historic Battlefields. While designation as a UNESCO World Heritage Site is not a statutory designation under English planning law, such a designation is regarded as a material consideration in planning decisions, and World Heritage Sites are in practice protected from development that could affect any aspect of their significance including settings within the Site and a buffer zone around it.

National Planning Policy

The NPPF sets out government policy on the historic environment, which covers all elements, whether designated or not, that are identified as 'having a degree of significance meriting consideration in planning decisions, because of its heritage interest'.

One of the over-arching aims is to 'Conserve heritage assets in a manner appropriate to their significance, so that they can be enjoyed for their contribution to the quality of life of this and future generations'. To achieve this, local planning authorities can request that the applicant describe "the significance of any heritage assets affected, including any contribution made by their setting". The level of detail required in the assessment should be "proportionate to the assets' importance and no more than is sufficient to understand the potential impact of the proposal on their significance". It goes on to say that "where a site on which development is proposed includes or has the potential to include heritage assets with archaeological interest, local planning authorities should require developers to submit an appropriate desk based assessment and, where necessary, a field evaluation."

A key policy within the NPPF is that “when considering the impact of a proposed development on the significance of a designated heritage asset, great weight should be given to the asset's conservation. The more important the asset, the greater the weight should be.

With regard to non-designated heritage assets specific policy is provided in that a balanced judgement will be required having due regard to the scale of any harm or loss and the significance of the heritage asset affected.

Paragraph 132 states that ‘Significance can be harmed or lost through alteration or destruction of a heritage asset or development within its setting. Substantial harm to or loss of a Grade II listed building, park or garden should be exceptional, while substantial harm to or loss of designated heritage assets of the highest significance, should be wholly exceptional’.

Paragraphs 133 & 134 explain that ‘where a proposed development will lead to substantial harm to or total loss of significance of a designated heritage asset, local planning authorities should refuse consent, unless it can be demonstrated that the substantial harm or loss is necessary to achieve substantial public benefits that outweigh that harm or loss.

It also advises that where a proposal involve less than substantial harm to the significance of a designated heritage asset, this harm should be weighed against the public benefits of the proposal, including securing its optimum viable use. In weighing applications that affect directly or indirectly non designated heritage assets, a balanced judgement will be required having regard to the scale of any harm or loss and the significance of the heritage asset.

The London Plan 2011 with 2016 alterations

Policy 7.8: Heritage Assets and Archaeology

This policy states that development should incorporate measures that identify, record, interpret, protect, and where possible, present the site's heritage assets, whether designated or non-designated.

Based on this policy, planning decisions involving heritage assets will be assessed on the level of identification, value, conservation, restoration, re-use and incorporation of the asset in the proposed plans. The significance of heritage assets and their settings should be conserved by proposals which are sympathetic to the form, scale, materials and architectural detail of the asset.

Any development which will cause substantial harm or loss of a designated heritage asset will only be accepted in exceptional circumstances. The importance of the development will be assessed proportionately in terms of public benefit against the impact on, and the importance of the asset.

Proposals showing potential modifications to heritage assets which will reduce carbon emissions and secure sustainable development are favourable where it is on balance with potential harm to the heritage asset or its setting.

Local Planning Policy

Planning applications in Enfield are determined using the adopted Core Strategy policies (2010), the adopted Development Management Document (2014), area based documents and relevant policies in the London Plan.

Core Strategy (adopted November 2010)

Core Policy 31: Built and Landscape Heritage

The Council will implement national and regional policies and work with partners (including land owners, agencies, public organisations and the community) to pro-actively preserve and enhance all of the Borough's heritage assets. Actions will include:

Reviewing heritage designations and their boundaries where appropriate, and continuing to maintain non-statutory, local lists and designations based on formally adopted criteria;

Ensuring that built development and interventions in the public realm that impact on heritage assets have regard to their special character and are based on an understanding of their context. Proposals within or affecting the setting of heritage assets will be required to include a thorough site analysis and character appraisal which explicitly demonstrates how the proposal will respect and enhance the asset;

Identifying opportunities for the repair and restoration of heritage assets and working with owners of heritage assets on English Heritage's Heritage at Risk Register to find viable solutions to secure the asset's long-term future. Where necessary, the Council will make full use of its legislative powers to ensure their preservation;

Ensuring developments in areas of archaeological importance take into account the potential for new finds by requiring consultation with English Heritage and on-site investigations, including the appropriate recording and dissemination of archaeological evidence;

Supporting appropriate initiatives which increase access to historic assets, provide learning opportunities and maximise their potential as heritage attractions, particularly at Forty Hall and the Area of Special Character in the north west of the Borough; and

Finding new ways to record and recognise Enfield's intangible heritage resources and, where possible, open up wider public access to them

Enfield's Development Management Document (Adopted November 2014)

DMD 44 Conserving and Enhancing Heritage Assets

- 1. Applications for development which fail to conserve and enhance the special interest, significance or setting of a heritage asset will be refused.*
- 2. The design, materials and detailing of development affecting heritage assets or their setting should conserve the asset in a manner appropriate to its significance.*
- 3. All applications affecting heritage assets or their setting should include a Heritage Statement. The applicant will also be required to record and disseminate detailed information about the asset gained from desk-based and on-site investigations. Information should be provided to the Local Planning Authority, Historic Environment Record and English Heritage. In some circumstances, a Written Scheme of Investigation will be required.*

Appendix 2 Conservation Area Designation

The factors and key characteristics that give the Enfield Town Conservation Area its special interest, as defined in the Conservation Area Character Appraisal are as follows:

- *There is a close relationship between open spaces and built-up areas. Three substantial areas of open space exist to the north, north-west and south-west of the town centre and are included within the Conservation Area: the schools' playing fields, Chase Green, and Town Park. Many locations in the town therefore have attractive views to open space, or have backdrops formed by trees.*
- *The passage between these contrasting areas is often dramatic. Church Street opens out into views of Chase Green; the busy market leads directly to the churchyards and school fields; Cecil Road and the New Town border Town Park.*
- *The surviving medieval settlement pattern around The Town and the Market Place gives a clear focus to the town, provides a visual reminder of its origins; and makes a major contribution to the continuing market town character. This is emphasised by the distinctive shape of The Town (an elongated triangle), which should be safeguarded in any future proposals to pedestrianise Church Street and The Town.; and by the close relationship of St Andrew's Church and its setting with the Market Place.*
- *The New River is a great asset. The water course contributes in several different ways to the distinctiveness of the Conservation Area throughout its length – as a tranquil setting for houses, public gardens, the Town Park and several footpaths, its progress marks the changes between character areas.*
- *Public, educational and commercial buildings and churches from the late 19th and early 20th century make a major contribution to the town's present-day character. These are located both within the commercial centre (Lloyds and Barclays Banks, the Post Office, the central library, the grammar and county schools, public houses such as the King's Head) and at its northern edge (the court house, St Paul's). Their architectural detail, quality of craftsmanship and substantial scale make them landmark buildings that define particular locations and dominate local views (for example, the view of Barclays Bank north along Sydney Road, or of the court house southwards along Chase Side).*
- *There is a large number of surviving high quality 18th century residential buildings. Many of these retain their large gardens and make a positive and important contribution to the urban fabric and townscape. The best examples are Gentleman's Row and Silver Street.*
- *Well-defined residential areas from the late 19th century and early 20th century are knitted into the pattern of the town centre. These areas retain much of their original layout and fabric, either as terraces or semi-detached houses. Holly Walk, River View, Little Park Gardens, Cecil Road and the New Town (Raleigh, Essex and Sydney Roads) are the principal examples.*
- *There is a consistent use of red brick. Mostly used in combination with stonework for architectural features, this gives the Conservation Area a visual unity.*

- *The town centre has a number of good shopping parades built in the late 19th century. Their original materials and details survive and counteract the negative effect of modern standard shop fronts. The best examples are located in Church Street and London Road.*
- *Much of the Conservation Area to the north and north-west has an intricate network of footpaths. These provide a welcome opportunity to escape from traffic and to experience historic buildings and their fabric at close quarters, while also allowing dramatic changes of view and contrasting spatial experiences.*
- *Many good brick walls survive, defining and enclosing the townscape and its routes, and emphasising the importance of the footpath network (Enfield Council 2015).*

Appendix 3 HER Data

Greater London Designation Full Report

21/12/2017

Number of records: 3

GLHER Report 13809 S ref.60252 Town Park TQ 3260 9610 500m radius search APA

DesigUID: DLO35156 **Type:** Archaeological Priority Area **Status:** Active

GLHER No **Borough No** **Other Ref**

DLO35156 9

Name: Bush Hill Park

Grade: APA **Date Assigned:** 21/12/2011 **Amended:** **Revoked:**

Legal Description

Archaeological priority area surrounding Bush Hill earthworks including possible Iron Age hillfort (scheduled monument)

Curatorial Notes

Designating Organisation: London Borough of Enfield

Location

Grid Reference: Centred TQ 3225 9557 (513m by 804m)

Map sheet: TQ39NW **Area (Ha):** 272,140.59

Administrative Areas

Borough ENFIELD

Postal Addresses - None recorded

Sources - None recorded

Associated Monuments

MLO107785 Park: Bush Hill / Old Park Avenue, Winchmore Hill, [Bush Hill Park Golf Course], Enfield, N21 {early 20th century golf course on medieval estate}

Additional Information

DesigUID: DLO35153 **Type:** Archaeological Priority Area **Status:** Active

GLHER No **Borough No** **Other Ref**

DLO35153 6

Name: Enfield Town Centre

Grade: APA **Date Assigned:** 20/12/2011 **Amended:** **Revoked:**

Legal Description

Archaeological Priority Area surrounding the historic core of Enfield

Curatorial Notes

Designating Organisation: London Borough of Enfield

Location

Grid Reference: Centred TQ 3269 9667 (541m by 598m)

Map sheet: TQ39NW **Area (Ha):** 240,663.45

Administrative Areas

Borough ENFIELD

Postal Addresses - None recorded

Sources - None recorded

Associated Monuments

080575/00/00 Find Spot:

080585/00/00 Find Spot: NAGS HEAD LANE?

080665/00/00	Monument: CHURCH ST
080696/01/00	Monument: PALACE GDNS
080696/02/00	Monument: PALACE GDNS
080700/00/00	Monument: MARKET PLACE
081485/00/00	Monument: PALACE GDNS
081486/00/00	Monument: PALACE MEWS
081488/00/00	Monument: CECIL STLAINGS YARD
081538/00/00	Monument: CHURCH WALK
082156/00/00	Monument: SYDNEY RD
082357/00/00	Find Spot:
082363/00/00	Find Spot:
MLO107855	Park: Church Lane / Church Walk [St Andrew's Churchyard], Enfield, EN1 3EJ {medieval churchyard}
MLO2473	Monument: Churchbury Lane {Church Wall}
MLO2909	Monument: Manor House (The Palace)- site of
MLO67650	Monument: Palace Garden
MLO78145	Monument: 35-41 Silver Street
MLO82654	Listed Building: WALL AT BACK OF GARDEN TO NUMBER 68 SILVER STREET
MLO82680	Listed Building: THE CROWN AND HORSESHOES PUBLIC HOUSE
MLO82686	Listed Building: ENFIELD VICARAGE
MLO82687	Listed Building: WALL TO EAST OF GARDEN OF NUMBER 36 (ENFIELD VICARAGE)
MLO82688	Listed Building: 60 Silver Street
MLO82689	Listed Building: 68 Silver Street
MLO82690	Listed Building: 65 Silver Street
MLO82691	Listed Building: OLD VESTRY OFFICE
MLO82702	Listed Building: FRONT RAILINGS TO NO 11
MLO82703	Listed Building: THE COACH HOUSE
MLO82704	Listed Building: 1 Gentlemans Row
MLO82705	Listed Building: FORECOURT RAILINGS TO NOS 13 AND 15
MLO82706	Listed Building: CLARENDON COTTAGE
MLO82707	Listed Building: EASTBURY
MLO82708	Listed Building: SEDGECROP
MLO82709	Listed Building: 23 Gentlemans Row
MLO82710	Listed Building: 25 Gentlemans Row
MLO82711	Listed Building: 31 Gentlemans Row
MLO82725	Listed Building: 22-24 Church Street
MLO82728	Listed Building: Enfield Parish Curch (Church of St Andrew)
MLO82729	Listed Building: Wall to east of Enfield Parish Church (Church of St. Andrew)
MLO82730	Listed Building: NORTH EAST BUILDING OF ENFIELD GRAMMAR SCHOOL
MLO82731	Listed Building: UVEDALE COTTAGE AND UVEDALE HOUSE
MLO82745	Listed Building: WALL TO NORTH OF FORECOURT OF NO 1
MLO82746	Listed Building: LITTLE PARK
MLO82772	Listed Building: BOROUGH COUNCIL HEALTH OFFICE
MLO82773	Listed Building: 7 Gentlemans Row
MLO82774	Listed Building: RIVULET HOUSE
MLO82785	Listed Building: 22 The Town
MLO82793	Listed Building: 4 K6 TELEPHONE KIOSKS NEAR JUNCTION WITH CHURCH STREET
MLO82838	Listed Building: WALL AT JUNCTION WITH LITTLE PARK GARDENS
MLO82839	Listed Building: FRONT RAILINGS AND GATE TO NO 9
MLO82840	Listed Building: FORECOURT RAILINGS TO NO 22

DesigUID: DLO35153 **Name:** Enfield Town Centre

MLO82847 Listed Building: FORTESCUE LODGE
MLO82848 Listed Building: BRECON HOUSE
MLO82857 Listed Building: THE LAURELS
MLO82867 Listed Building: 58 Silver Street
MLO82868 Listed Building: 84 Silver Street
MLO98132 Monument: Enfield Town Centre

Additional Information

DesigUID: DLO35154 **Type:** Archaeological Priority Area **Status:** Active

GLHER No **Borough No** **Other Ref**

DLO35154 7

Name: Ermine Street

Grade: APA **Date Assigned:** 21/12/2011 **Amended:** **Revoked:**

Legal Description

Roman road of Ermine Street and contemporary roadside settlement including Leighton Road

Curatorial Notes

Designating Organisation: London Borough of Enfield

Location

Grid Reference: Centred TQ 3353 9575 (1850m by 3710m)

Map sheet: TQ39NW **Area (Ha):** 3,296,742.88

Administrative Areas

Borough ENFIELD

Postal Addresses - None recorded

Sources - None recorded

Associated Monuments

081468/00/00 Monument: 2C LANDSEER RD
081477/00/00 Monument: GREAT CAMBRIDGE RD (EDMONTON SCHOOL GROUNDS)
MLO107758 Park: Bury Street West, Lower Edmonton [Bury Lodge Gardens], Enfield, N9 9JN {1930s public gardens on earlier grounds}
MLO107764 Park: Southbury Road / Lincoln Road [Bush Hill Park], Enfield, EN1 1PS {early 20th century park on former medieval estate}
MLO107799 Park: Great Cambridge Road / Donkey Lane, [Enfield Playing Fields], Enfield EN1 3SD {1930s playing fields / King George's Fields Foundation}
MLO107820 Park: Delhi Road, [King George's Field], Enfield, EN1 2NB (1950s commemorative playing field)
MLO107867 Park: Bury Street West, Edmonton [Salisbury House Arts Centre], Enfield, N9 9LA {remnant of 17th century grounds}

Additional Information

Greater London Event/Activity Full Report

21/12/2017

Number of records: 5

GLHER Report 13809 S ref.60252 Town Park TQ 3260 9610 500m radius search Events

Event ID	Event Name	Event Type
ELO11410	Cecil Road (No. 81), London, EN2: Evaluation	Backlog Report

External Reference:

Dates: 15/07/2010 - 16/07/2010, between (2010)

Project Details:

Event/Activity Types - None recorded

Thesaurus Event Types - None recorded

Event/Activity References

OASIS - OASIS	johnmoor1-80783
Organisation:	John Moore Heritage Services

Associated Individuals

Booth, Patrick - Greater London Archaeology Advisory Service	GIS Record Created
Booth, Patrick - Greater London Archaeology Advisory Service	Compiler
Gilbert, David - John Moore Heritage Services	Project Manager
Williams, Gwilym - John Moore Heritage Services	Supervisor

Associated Organisations

Greater London Archaeology Advisory Service	Compiler
John Moore Heritage Services	Excavator

Location

81 Cecil Road

Grid Reference

Centred TQ 3265 9634 (21m by 36m)	TQ39NW	Dispersed
-----------------------------------	--------	-----------

Administrative Areas

Borough	ENFIELD
---------	---------

Address

81 Cecil Road, London, EN2

Description and Sources

Description

An evaluation was carried out on land adjacent to 81 Cecil Road by John Moore Heritage Services in 2010. A number of quarry pits were observed which were undated but are thought to be of probable Victorian date. The brick and concrete footings of a house, which is thought to have been built between 1920 and 1935, were also uncovered.

Natural deposits of gravel were observed at 29.10m OD.

Sources

Digital Report: John Moore Heritage Services. 2010. An Archaeological Evaluation For Enfield Evangelical Free Church On Land Adjacent To 81 Cecil Road.

Associated Monuments - None recorded

Event ID: ELO17093 **Name:** Church Street (No 25), Enfield Town, Enfield, EN2 6AJ: Watching Brief

Event ID	Event Name	Event Type
ELO17093	Church Street (No 25), Enfield Town, Enfield, EN2 6AJ: Watching Brief	Event - Intervention

External Reference:

Dates: 20/11/2015 - 20/11/2015, on (2016)

Project Details:

Event/Activity Types

Archaeological Intervention / Watching Brief

Thesaurus Event Types

WATCHING BRIEF

Event/Activity References

OASIS - OASIS preconst1-231370

Organisation: Pre-Construct Archaeology

Associated Individuals

Boyer, Peter - Pre-Construct Archaeology	Supervisor
Millward, Melanie - Greater London Archaeology Advisory Service	GIS Record Created
Millward, Melanie - Greater London Archaeology Advisory Service	Compiler
Moore, Peter - Pre-Construct Archaeology	Project Manager

Associated Organisations

Greater London Archaeology Advisory Service	GIS Record Created
Greater London Archaeology Advisory Service	Compiler
Pre-Construct Archaeology	Excavator

Location

25 Church Street
Enfield Town
Enfield

Grid Reference

Centred TQ 3263 9660 (13m by 11m) TQ39NW Area

Administrative Areas

Borough ENFIELD

Address

25 Church Street, Enfield Town, Enfield, London, EN2 6AJ

Description and Sources

Description

A watching brief was undertaken on the 20th November 2015 at 25 Church Street, Enfield by Pre-Construct Archaeology. The watching brief focused on the excavation of foundation trenches.

No archaeological features were identified and only residual finds of a 20th century date were recovered.

Sources

Digital Report: Pre-Construct Archaeology. 2016. Archaeological Watching Brief on Land to the Rear of 25 Church Street, Enfield, EN2 6AJ.

Associated Monuments - None recorded

Event ID: ELO5100 Name:

Event ID	Event Name	Event Type
ELO5100		Event - Interpretation

External Reference:

Dates: 01/01/1911 - 31/12/1911

Project Details:

Event/Activity Types

Archive Interpretation / Documentary Research

Thesaurus Event Types

DESK BASED ASSESSMENT

Event/Activity References - None recorded

Organisation - None Recorded

Associated Individuals

SMR Administrator, - Greater London Archaeology Compiler
Advisory Service

SMR Administrator, - Greater London Archaeology Reviser
Advisory Service

Associated Organisations

Location

Grid Reference

TQ 3260 9650 (point)	TQ39NW	Point
----------------------	--------	-------

Administrative Areas

Borough	ENFIELD
---------	---------

Address - None recorded

Description and Sources

Description

There is no description for this event

Sources - None recorded

Associated Monuments

080665/00/00 CHURCH ST (Monument 080665/00/00)

Event ID: ELO6409 **Name:** London Road and Cecil Road, [Palacexchange], Enfield, Geoarchaeological

Event ID	Event Name	Event Type
ELO6409	London Road and Cecil Road, [Palacexchange], Enfield, Geoarchaeological Investigation (Area B Redevelopment)	Backlog Report

External Reference:

No dates recorded

Project Details:

Event/Activity Types

Archaeological Intervention /Geotechnical monitoring

Thesaurus Event Types

GEOTECHNICAL SURVEY

Event/Activity References - None recorded

Organisation: Gifford and Partners

Associated Individuals

Ellwood, Steve - Greater London Archaeology Advisory Service	Reviser
Fillery-Travis, Ruth - Greater London Archaeology Advisory Service	Reviser
Szaflarska, Lidia - Greater London Archaeology Advisory Service	Compiler

Associated Organisations

Gifford	Excavator
Greater London Archaeology Advisory Service	Compiler

Location

Enfield Town Centre
Palace Exchange

Grid Reference

Centred TQ 32854 96358 (109m by 77m)	TQ39NW	Area
--------------------------------------	--------	------

Administrative Areas

Borough	ENFIELD
---------	---------

Address

Enfield Town Centre, Palace Exchange, Enfield

Description and Sources

Description - None recorded

Sources

Unpublished document: Gifford and Partners. 2005. Enfield Town Centre Stage II Redevelopment, Palacexchange: Geoarchaeological Field Investigations at London Road (Area B).

Associated Monuments - None recorded

Event ID: ELO6722 **Name:** London Road and Cecil Road, Enfield, Evaluation (Area A)

Event ID	Event Name	Event Type
ELO6722	London Road and Cecil Road, Enfield, Evaluation (Area	Event - Intervention

External Reference:

Dates: 28/02/2005 - 29/04/2005, throughout (2005)

Project Details:

Event/Activity Types

Archaeological Intervention / Excavation / Trial Trench

Thesaurus Event Types

TRIAL TRENCH

Event/Activity References - None recorded

Organisation: Gifford and Partners

Associated Individuals

Fillery-Travis, Ruth - Greater London Archaeology Advisory Service	Reviser
Leggett, Rachael - Greater London Archaeology Advisory Service	Reviser
Szaflarska, Lidia - Greater London Archaeology Advisory Service	Compiler

Associated Organisations

Location

Enfield Town Centre

Grid Reference

Centred TQ 32833 96462 (92m by 121m)	TQ39NW	Area
--------------------------------------	--------	------

Administrative Areas

Borough	ENFIELD
---------	---------

Address

Enfield Town Centre

Description and Sources

Description

An archaeological evaluation and excavation was carried out by C Mayo of Pre-Construct Archaeology on behalf of Gifford and Partners Ltd between 28th February and 29th April 2005. Three trenches were opened, and one of the trenches revealed archaeological remains dating from prehistoric to post medieval period including land boundaries and structures.

Updated by R Leggett (22nd September 2006)

Sources

Unpublished document: Pre-Construct Archaeology. 2005. Enfield Town Centre: Assessment Of An Archaeological Evaluation.

Associated Monuments

MLO98132	Enfield Town Centre (Monument MLO98132)
----------	---

Greater London Monument Full Report

21/12/2017

Number of records: 26

GLHER Report 13809 S ref.60252 Town Park TQ 3260 9610 500m radius search Monuments

HER Number	Site Name	Record Type
082357/00/00 - MLO23620		Find Spot

Monument Types and Dates

FINDSPOT (Medieval - 1066 AD to 1539 AD)

Description and Sources

Description

FIVE SHORT-CROSS PENNIES OF HENRY II & III & FRAGMENT OF AN EARTHENWAREVESSEL WAS EXHIBITED TO THE ROYAL NUMISMATIC SOCIETY IN 1864 (THOMPSON)

ANTIQUARIAN & LITERARY INTELLIGENCE (Article in monograph). SLO41687.

THOMPSON JDA, INVENTORY OF BRITISH COIN HOARDS AD 600-1500 (Article in monograph). SLO41689.

Museum of London, MOL BAGL (Unpublished document). SLO41686.

PROCEEDINGS (Article in monograph). SLO41688.

Sources

Article in monograph: THOMPSON JDA. INVENTORY OF BRITISH COIN HOARDS AD 600-1500. NO 155.

Article in monograph: PROCEEDINGS. P 11.

Article in monograph: ANTIQUARIAN & LITERARY INTELLIGENCE. PP 750-752.

Unpublished document: Museum of London. MOL BAGL. NO 2629.

Associated resources - None recorded

Location

National Grid Reference

TQ 3280 9650 (point) TQ39NW Point

Administrative Areas

Borough ENFIELD

Address/Historic Names - None recorded

Designations, Statutes and Scorings

Associated Designations

Archaeological Priority Area (APA) - Enfield Town Centre Active DLO35153
DLO35153

Other Statutes and Cross-References

SHINE Candidate (Unlikely) Active

Historic Environment Record - 082357/00/00 Active

Site of Archaeological Interest - Y Active

Ratings and Scorings - None recorded

Land Use

Associated Historic Landscape Character Records - None recorded

Other Land Classes - None recorded

Related Monuments - None Recorded

Associated Finds

FLO5974 COIN HOARD (Medieval - 1066 AD to 1539 AD)

Associated Events/Activities - None recorded

Associated Individuals/Organisations - None recorded

HER Number	Site Name	Record Type
082363/00/00 - MLO23694		Find Spot

Monument Types and Dates

FINDSPOT (Prehistoric - 500000 BC to 42 AD)

Description and Sources**Description**

PREHISTORIC ARROWHEAD FROM ENFIELD REPORTED 1836, NO FURTHER INFO.

LOVELL G, *ANCIENT SWORD & ARROWHEAD* (Article in monograph). SLO41920.Museum of London, *MOL BAGL* (Unpublished document). SLO41919.**Sources**

Article in monograph: LOVELL G. ANCIENT SWORD & ARROWHEAD.

Unpublished document: Museum of London. MOL BAGL. NO 684.

Associated resources - None recorded**Location****National Grid Reference**

TQ 3280 9650 (point)

TQ39NW

Point

Administrative Areas

Borough

ENFIELD

Address/Historic Names - None recorded**Designations, Statuses and Scorings****Associated Designations**Archaeological Priority Area (APA) -
DLO35153

Enfield Town Centre

Active

DLO35153

Other Statuses and Cross-References

Historic Environment Record - 082363/00/00

Active

SHINE Candidate (Unlikely)

Active

Site of Archaeological Interest - Y

Active

Ratings and Scorings - None recorded**Land Use****Associated Historic Landscape Character Records - None recorded****Other Land Classes - None recorded****Related Monuments - None Recorded****Associated Finds**

FLO5986 ARROWHEAD (Prehistoric - 500000 BC to 42 AD)

Associated Events/Activities - None recorded**Associated Individuals/Organisations - None recorded**

HER Number

MLO82785

Site Name

22 The Town

Record Type

Listed Building

Record created from imported Listed Buildings On-line dataset 11-Jan-2006; see linked Designation record for full details

Monument Types and Dates

TIMBER FRAMED BUILDING (Post Medieval - 1550 AD to 1699 AD)

SHOP (Post Medieval to Unknown - 1900 AD)

Description and Sources**Description**

1. 4411 THE TOWN (South Side) Nos 3 and
4 TQ 3296 7/249
II
2. C17 or earlier timber framed building. 2 storeys and attic, 3 windows in all. High pitched tiled roof with 3 flat dormers. Weather-boarded 1st floor has C19 and modern casements. No 3, on the East, has one sash window, with external shutters, and a 4-panel door on ground floor. No 4 has modern shop on ground floor.
Listing NGR: TQ3283196542

Sources - None recorded**Associated resources - None recorded****Location****National Grid Reference**

TQ 32831 96542 (point)

TQ39NW

Point

Administrative Areas

Borough

ENFIELD

Address/Historic Names

22 The Town, Enfield, Middlesex, EN2 6LT

Designations, Statuses and Scorings**Associated Designations**

Archaeological Priority Area (APA) - DLO35153	Enfield Town Centre	Active	DLO35153
Listed Building (II) - 200701		Active	DLO17732

Other Statuses and Cross-References

SHINE Candidate (Unlikely)	Active
----------------------------	--------

Ratings and Scorings - None recorded**Land Use****Associated Historic Landscape Character Records - None recorded****Other Land Classes - None recorded****Related Monuments - None Recorded****Finds - None recorded****Associated Events/Activities - None recorded****Associated Individuals/Organisations - None recorded**

HER Number	Site Name	Record Type
MLO82725	22-24 Church Street	Listed Building

Record created from imported Listed Buildings On-line dataset 11-Jan-2006; see linked Designation record for full details

Monument Types and Dates

HOUSE (Post Medieval - 1700 AD to 1799 AD)

Description and Sources

Description

1. 4411 CHURCH STREET N9 (South Side) EDMONTON
No 24
TQ 3493 14/101
II GV
2. C18 cottage of red brick with renewed pantiled roof. 2 storeys, 2 windows, those on 1st floor modern casements, those on ground floor sash windows with glazing bars in box frames. Doorway has architrave, cut brackets, frieze and dentilled cornice hood. Included for group value.
Nos 20, 20A, 22, 22A, 24 and the School form a group.
Listing NGR: TQ3267496539

Sources - None recorded

Associated resources - None recorded

Location

National Grid Reference

TQ 32674 96539 (point) TQ39NW Point

Administrative Areas

Borough ENFIELD

Address/Historic Names

22-24 Church Street, Enfield, Middlesex, EN2 6BE

Designations, Statuses and Scorings

Associated Designations

Archaeological Priority Area (APA) - DLO35153	Enfield Town Centre	Active	DLO35153
Listed Building (II) - 200591		Active	DLO17672

Other Statuses and Cross-References

SHINE Candidate (Unlikely)	Active
----------------------------	--------

Ratings and Scorings - None recorded

Land Use

Associated Historic Landscape Character Records - None recorded

Other Land Classes - None recorded

Related Monuments - None Recorded

Finds - None recorded

Associated Events/Activities - None recorded

Associated Individuals/Organisations - None recorded

HER Number	Site Name	Record Type
081482/00/00 - MLO6966	31 RALEIGH RD	Monument

Monument Types and Dates

BUILDING (Medieval to Post Medieval - 1485 AD to 1600 AD)

Description and Sources**Description**

EXCAVATIONS BY Enfield Archaeological Society IN 1975, UNDER J IVENS, UNCOVERED BUILDING FOOTINGS IN THE AREA OF THE 16TH CENTURY ENFIELD PALACE/MANOR HOUSE.

ENAS - IVENS J, 31 RALEIGH RD (Excavation archive). SLO10743.

EXCAVATION ROUND-UP 1975 (Article in monograph). SLO10741.

RCHM NMR, EXCAVATIONS INDEX (Unpublished document). SLO10742.

Sources

Excavation archive: ENAS - IVENS J. 31 RALEIGH RD.

Unpublished document: RCHM NMR. EXCAVATIONS INDEX. PRN 700.

Article in monograph: EXCAVATION ROUND-UP 1975. P 371.

Associated resources - None recorded

Location**National Grid Reference**

TQ 3270 9630 (point)	TQ39NW	Point
----------------------	--------	-------

Administrative Areas

Borough	ENFIELD
---------	---------

Address/Historic Names

31 RALEIGH RD

Designations, Statuses and Scorings**Associated Designations - None recorded****Other Statuses and Cross-References**

Site of Archaeological Interest - Y	Active
-------------------------------------	--------

Historic Environment Record - 081482/00/00	Active
--	--------

SHINE Candidate (Possible)	Active
----------------------------	--------

Ratings and Scorings - None recorded

Land Use**Associated Historic Landscape Character Records - None recorded****Other Land Classes - None recorded**

Related Monuments - None Recorded

Finds - None recorded

Associated Events/Activities - None recorded

Associated Individuals/Organisations - None recorded

HER Number	Site Name	Record Type
081483/00/00 - MLO6967	31 RALEIGH RD	Monument

Monument Types and Dates

WELL (Post Medieval - 1540 AD to 1900 AD)

Description and Sources**Description**

EXC BY J IVENS FOR Enfield Archaeological Society 1975 FOUND DRY BRICK WELL 3.65M DEEP LAID ON A WOODBEAM & FED BY A NATURAL STREAM.

ENAS - IVENS J, 31 RALEIGH RD (Excavation archive). SLO10746.

EXCAVATION ROUND-UP 1975 (Article in monograph). SLO10744.

RCHM NMR, EXCAVATIONS INDEX (Unpublished document). SLO10745.

Sources

Excavation archive: ENAS - IVENS J. 31 RALEIGH RD.

Unpublished document: RCHM NMR. EXCAVATIONS INDEX. PRN 700.

Article in monograph: EXCAVATION ROUND-UP 1975. P 371.

Associated resources - None recorded

Location**National Grid Reference**

TQ 3270 9630 (point)	TQ39NW	Point
----------------------	--------	-------

Administrative Areas

Borough	ENFIELD
---------	---------

Address/Historic Names

31 RALEIGH RD

Designations, Statuses and Scorings**Associated Designations - None recorded****Other Statuses and Cross-References**

Historic Environment Record - 081483/00/00	Active
--	--------

Site of Archaeological Interest - Y	Active
-------------------------------------	--------

SHINE Candidate (Possible)	Active
----------------------------	--------

Ratings and Scorings - None recorded

Land Use**Associated Historic Landscape Character Records - None recorded****Other Land Classes - None recorded**

Related Monuments - None Recorded

Finds - None recorded

Associated Events/Activities - None recorded

Associated Individuals/Organisations - None recorded

HER Number	MLO82793	Site Name	4 K6 TELEPHONE KIOSKS NEAR JUNCTION WITH CHURCH STREET
-------------------	----------	------------------	--

HER Number	Site Name	Record Type
MLO82793	4 K6 TELEPHONE KIOSKS NEAR JUNCTION WITH CHURCH STREET	Listed Building

Record created from imported Listed Buildings On-line dataset 11-Jan-2006; see linked Designation record for full details

Monument Types and Dates

TELEPHONE BOX (Modern - 1935 AD)

Description and Sources

Description

1. 4411 LITTLE PARK GARDENS (East side) TQ 3296-3396 7/279
 4 K6 Telephone Kiosks near junction with Church Street. II
 2. Telephone kiosks. Type K6. Designed 1935 by Sir Giles Gilbert Scott. Made by various contractors. Cast iron. Square kiosks with domed roofs. Unperforated crowns to top panels and margin glazing to windows and doors.
 Listing NGR: TQ3260796576

Sources - None recorded

Associated resources - None recorded

Location

National Grid Reference

TQ 32607 96576 (point) TQ39NW Point

Administrative Areas

Borough ENFIELD

Address/Historic Names - None recorded

Designations, Statuses and Scorings

Associated Designations

Archaeological Priority Area (APA) - DLO35153	Enfield Town Centre	Active	DLO35153
Listed Building (II) - 200817	4 K6 TELEPHONE KIOSKS NEAR JUNCTION WITH CHURCH STREET	Active	DLO17740

Other Statuses and Cross-References

SHINE Candidate (Unlikely) Active

Ratings and Scorings - None recorded

Land Use

Associated Historic Landscape Character Records - None recorded

Other Land Classes - None recorded

Related Monuments - None Recorded

Finds - None recorded

Associated Events/Activities - None recorded

Associated Individuals/Organisations - None recorded

HER Number MLO107785 **Site Name** Bush Hill / Old Park Avenue, Winchmore Hill, [Bush Hill Park Golf Course], Enfield, N21 {early 20th century golf course on medieval estate}

HER Number	Site Name	Record Type
MLO107785	Bush Hill / Old Park Avenue, Winchmore Hill, [Bush Hill Park Golf Course], Enfield, N21 {early 20th century golf course on medieval estate}	Park

Bush Hill Park Golf Course is situated on part of what was formerly Old Park, a Royal property pre-dating Enfield Chase. The estate passed through many owners and was eventually sold in 1871 and broken up for building. Part of the estate became Bush Hill Park Golf Course in 1921, Old Park mansion becoming the golf clubhouse.

Monument Types and Dates

CLUBHOUSE ((at some time) Modern - 1921 AD to 2050 AD)

Main Building BRICK
Material

GOLF COURSE ((at some time) Modern - 1921 AD to 2050 AD)

(Former Type) COUNTRY ESTATE ((between) Post Medieval - 1660 AD to 1871 AD)

Evidence EXTANT BUILDING

(Former Type) COUNTRY HOUSE ((at some time) Post Medieval to Modern - 1705 AD to 1921 AD)

Evidence EXTANT BUILDING

Description and Sources

Description

Bush Hill Park Golf Course is situated on part of what was formerly Old Park, a Royal property pre-dating Enfield Chase and the Domesday survey of 1086, where evidence of early settlement has been found, including a Roman coffin (which is now housed at Forty Hall). In 1660, on his restoration to the throne, Charles II granted the Old Park Estate to General George Monck, Duke of Albemarle, in recognition of his support. Since that time the then-225 hectare estate passed through many owners, sometimes expanding in size, sometimes diminishing. In the Nineteenth Century land at Bush Hill was owned by William Mellish (d.1838), a Tory MP for Grimsby and later Middlesex who was Director of the Bank of England.

The Bush Hill estate was sold in 1871 and broken up for building, the development of the area particularly accelerating as a result of the Great Eastern Railway opening Bush Hill Park station in 1880; by the mid 1930s the area was fully built up. Part of the estate became Bush Hill Park Golf Course in 1921 and Old Park mansion is now the golf clubhouse, the oldest part of which dates from c.1705, with later additions and extensions carried out in 1838, 1873 and the Twentieth Century. In the Nineteenth Century the house had belonged to a local antiquarian, Edward Ford, co-author of a history of Enfield and who had a collection of mediaeval fragments here including two Fifteenth Century corbel heads, which he installed on the clock turret of the Eighteenth Century stables. Enfield Urban District Council purchased c.11 hectares in order to create a recreation ground, now Town Park. The New River Loop passes through the site and divides the Golf Course land from Town Park. A public footpath, Carr's Lane, runs through the site which is otherwise private for club users only. It can be seen across the New River Loop which forms the boundary with Town Park although this affords no view of the old mansion.

Sources consulted:

Arthur Mee, 'The King's England: London North of the Thames except the City and Westminster', (Hodder & Stoughton 1972); Victoria County History; Bridget Cherry & Nikolaus Pevsner, 'The Buildings of England: London 4: North' (Penguin, 1998); Andrew Duncan 'Walking Village London' (New Holland, 1997); Revd George Hodson (Church History) and Edward Ford (General History), 'A History of Enfield in the County of Middlesex including its Royal and Ancient Manors, the Chase and the Duchy of Lancaster, with Notices of its Worthies, and its Natural History, Etc. Also an account of The Church and the Charities, and a History of the New River' (Enfield Press, printed by J H Meyers, 1873); David Pam 'The Story of Enfield Chase', (Enfield Preservation Society, 1984)

(1)

<1> London Parks and Gardens Trust, 2007, *London Parks and Gardens Trust Site Database*, ENF009 (Website). SLO78826.

Sources

(1) Website: London Parks and Gardens Trust. 2007. London Parks and Gardens Trust Site Database. <http://www.londongardensonline.org.uk>. ENF009

Associated resources - None recorded

Location

HER Number MLO107785 **Site Name** Bush Hill / Old Park Avenue, Winchmore Hill, [Bush Hill Park Golf Course], Enfield, N21 {early 20th century golf course on medieval estate}

National Grid Reference

Centred TQ 3236 9586 (647m by 1386m) TQ39NW Area

Administrative Areas

Borough ENFIELD

Address/Historic Names

Bush Hill Park Golf Course, Bush Hill, Winchmore Hill, Enfield, London, Greater London, N21

Bush Hill Park Golf Course, Old Park Avenue, Winchmore Hill, Enfield, London, Greater London, N21

Designations, Statuses and Scorings

Associated Designations

Archaeological Priority Area (APA) - DLO35156	Bush Hill Park	Active	DLO35156
Listed Building (II) - 1078905	Entrance Lodge to Bush Hill Park Golf Course.	Active	DLO17581
Scheduled Monument - 1002047	Earthworks at Old Park	Active	DLO13335

Other Statuses and Cross-References

London Parks and Gardens Trust - ENF009	Active
Historic Environment Record - MLO107785	Active

Ratings and Scorings - None recorded

Land Use

Associated Historic Landscape Character Records - None recorded

Other Land Classes - None recorded

Related Monuments

MLO82646	Entrance Lodge to Bush Hill Park Golf Club	Functional Association
----------	--	------------------------

Finds - None recorded

Associated Events/Activities - None recorded

Associated Individuals/Organisations

Williams, Sally - Greater London Archaeology Advisory Service	GIS Record Created
Williams, Sally - Greater London Archaeology Advisory Service	Compiler
Greater London Archaeology Advisory Service	GIS Record Created
Greater London Archaeology Advisory Service	Compiler

HER Number	MLO20725	Site Name	Bush Hill [Bush Hill Park], Enfield {Palaeolithic tools}
-------------------	----------	------------------	--

HER Number	Site Name	Record Type
MLO20725	Bush Hill [Bush Hill Park], Enfield {Palaeolithic tools}	Find Spot

Palaeolithic implements were discovered within the Boyn Hill Gravel terrace at Bush Hill Park.

Monument Types and Dates

FINDSPOT ((at some time) Lower Palaeolithic - 438000 BC to 348000 BC)
Evidence FIND

Description and Sources

Description

W Smith and Hazzeldine Warren found artefacts here. A crude ovate type GK illustrated by Smith said to have been found with flakes and cores 1883 and to be in the Evans Collection. Other finds difficult to identify are now in modern collections.

Wymer notes two E type handaxes and a primary flake in the British Museums Warren Collection marked 'LEA Valley Drift, Enfield'; another type handaxe in the Evans Collection in the Ashmolean exhibition, Smith saw marked as 'Enfield', may also be from this location.

Roe lists four handaxes and four flakes in the British Museum and Luton Museums. Warren (Enfield Archaeological Society 1982) notes abraded implements, flakes and cores were found at Bush Hill in 1883.

The artefacts were discovered within the Boyn Hill Gravel terrace, at a possible depth of 148ft OD. The gravel terrace dates to ca.440-350,000 BP.

WARREN B, *A GAZETTEER OF PALAEO. ETC FINDS IN SOUTH HERTS* (Article in monograph). SLO37203.

EVANS J, *ANCIENT STONE IMPLEMENTS OF THE BRITISH ISLES* (Article in monograph). SLO37202.

FLINT ARTEFACT (Artifact). SLO37192.

FLINT ARTEFACT(S) (Artifact). SLO37193.

FLINT ARTIFACT(S) (Artifact). SLO37197.

ROE D, *GAZETTEER OF BRITISH LOWER & MIDDLE PALAEO SITES* (Article in monograph). SLO37198.

WHITAKER CW, *HISTORY OF ENFIELD (REPRINT)* (Article in monograph). SLO37196.

Inner London Archaeological Unit, *INDEX* (Unpublished document). SLO37191.

WYMER JJ, *LOWER PALAEOLOGICAL ARCHAEOLOGY IN BRITAIN* (Article in monograph). SLO37199.

SMITH WG, *MAN THE PRIMEVAL SAVAGE* (Article in monograph). SLO37200.

WOODWARD HB, *MEM GEOL SURVEY UK LONDON* (Article in monograph). SLO37194.

Museum of London, *MOLLM AG* (Unpublished document). SLO37201.

Museum of London, *MOLLM AG, TQ 39 NW 3 & 22* (Unpublished document). SLO31856.

PREHISTORIC & ROMAN ENFIELD (Article in monograph). SLO37204.

<1> Juby, C., 2011, *London before London: Reconstructing a Palaeolithic Landscape*, p.87 (Unclassified). SLO81913.

Sources

Article in monograph: PREHISTORIC & ROMAN ENFIELD.

Article in monograph: WARREN B. A GAZETTEER OF PALAEO. ETC FINDS IN SOUTH HERTS. P 9 PALAEOLOGICAL NO 1.

Article in monograph: EVANS J. ANCIENT STONE IMPLEMENTS OF THE BRITISH ISLES. P 602.

Unpublished document: Museum of London. MOLLM AG. A164.

Article in monograph: SMITH WG. MAN THE PRIMEVAL SAVAGE. P 187 FIG 131, P 197.

Article in monograph: WYMER JJ. LOWER PALAEOLITHIC ARCHAEOLOGY IN BRITAIN. P 294.
 Article in monograph: ROE D. GAZETTEER OF BRITISH LOWER & MIDDLE PALAEO SITES. P 215.
 Artifact: FLINT ARTIFACT(S).
 Article in monograph: WHITAKER CW. HISTORY OF ENFIELD (REPRINT). P 10.
 Article in monograph: WOODWARD HB. MEM GEOL SURVEY UK LONDON. 79.
 Artifact: FLINT ARTEFACT(S).
 Artifact: FLINT ARTEFACT. EVANS COLL.
 Unpublished document: Inner London Archaeological Unit. INDEX. EN PRE 8.
 Unpublished document: Museum of London. MOLLM AG. F 918. TQ 39 NW 3 & 22

(1) Unclassified: Juby, C.. 2011. London before London: Reconstructing a Palaeolithic Landscape. p.87

Associated resources - None recorded

Location

National Grid Reference

TQ 3260 9560 (point)

TQ39NW

Point

Administrative Areas

Borough

ENFIELD

Address/Historic Names

Bush Hill Park, Bush Hill, Enfield, London, N21

Designations, Statutes and Scorings

Associated Designations - None recorded

Other Statutes and Cross-References

SHINE Candidate (Unlikely)

Active

Historic Environment Record - MLO20725

Active

Previous HER/SMR reference - 080567/00/00

Active

Site of Archaeological Interest - Y

Active

Ratings and Scorings - None recorded

Land Use

Associated Historic Landscape Character Records - None recorded

Other Land Classes - None recorded

Related Monuments - None Recorded

Associated Finds

FLO5439 LITHIC IMPLEMENT (Palaeolithic - 500000 BC to 10001 BC)

FLO5440 LITHIC IMPLEMENT (Small quantity) (Lower Palaeolithic - 438000 BC to 348000 BC) FLINT

Associated Events/Activities - None recorded

Associated Individuals/Organisations

Mills, Sophie - Greater London Archaeology Advisory Service

Editor

Greater London Archaeology Advisory Service

Editor

HER Number MLO104101 **Site Name** Cecil Road/Church Street [Library Green], Enfield, EN2 6TH {20th century public garden}

HER Number	Site Name	Record Type
MLO104101	Cecil Road/Church Street [Library Green], Enfield, EN2 6TH {20th century public garden}	Park

Enfield Central Library and its adjoining garden were formerly part of the estate of Chase Side House, a 19th century villa with 5 acres of beautiful gardens. It was formerly within Old Park, the Home Park of Enfield Manor, which dated from medieval times and once provided deer for Enfield Chase.

Monument Types and Dates

LIBRARY (Modern - 1910 AD to 2050 AD)

Main Building BRICK
Material

Description and Sources

Description

The village of Enfield, known as Enfield Green and later Enfield Town, was one of the largest mediaeval parishes in Middlesex and a fully cultivated area by the time of the Domesday survey, with to the west the 3,250 hectare hunting park of Enfield Chase. Later the area developed with many fine houses, including Chase Side House, a villa overlooking 5 acres of pleasure grounds owned by William Everett. The Chase Side estate was once land within the Old Park Estate, the Home Park of Enfield Manor, which pre-dated Enfield Chase and provided deer for the hunting park. An older house was purchased in 1826 by James Farrer Steadman, whose widow married William Everett. Everett is described by William Keane in 'The Beauties of Middlesex' (1850) as 'a gentleman of considerable taste in all that belongs to the departments of horticulture, floriculture, &c.' His kitchen garden contained an extensive vinery and cucumber pit, and his pleasure grounds led to St Andrew's Church (q.v.) along a 'winding walk . . . Bounded, on each side, by festoons of roses hanging from pillar to pillar for some considerable distance, until it enters the shrubbery to the gardener's cottage and to the orange-house'.

Everett's gardens no longer exist but part of the Chase Side House estate was purchased in 1894 as the site for a new town hall. In 1910 Enfield's Central Library, a 2-storey red brick building with stone quoins in English Baroque style, was built facing outwards with the aim still being to build on the green behind. However, the town hall scheme was then abandoned and Library Green was landscaped and the Library opened in 1912. As a result Library Green formed an important part of the turn-of-the-century landscaping of the east part of Enfield Town, having group value with Town Park, Chase Green and Chase Green Gardens (q.q.v.). Library Green was until the late C20th a rough, unenclosed lawn crossed by paths, with trees and shrubs around the perimeter, including acacia, cedar, laurel with a lime tree and a London plane on the adjoining pavement.

The garden was re-landscaped in 2009/2010, with new planting, seating, a water feature and planting of habitats for wildlife, including log piles, bat boxes and bird boxes as part of the project to restore and transform the old Enfield Town Library. The project was undertaken by Enfield Council working with Shepheard Epstein Hunter Architects. The new building re-opened in March 2010 at a ceremony officiated by former Poet Laureate Sir Andrew Motion in his new role as Chair of Museums, Libraries and Archives Council. Under the refurbishment, the entrance of the building was moved from the rear to face the street, the Edwardian façade was cleaned and its original windows refurbished, with a red brick 1960s extension pulled down and a glass and steel frontage erected to look out over the Green. In January 2011 it was awarded the 'Best Built Project' at the London Planning Awards.

Sources consulted:

David Pam, 'A history of Enfield pt 2: a Victorian suburb 1837-1914'; William Keane 'The Beauties of Middlesex' 1850; Revd George Hodson (Church History) and Edward Ford (General History), 'A History of Enfield in the County of Middlesex including its Royal and Ancient Manors, the Chase and the Duchy of Lancaster, with Notices of its Worthies, and its Natural History, Etc. Also an account of The Church and the Charities, and a History of the New River' (Enfield Press, printed by J H Meyers, 1873); Andrew Duncan 'Walking Village London' (New Holland) 1997; Bridget Cherry & Nikolaus Pevsner, 'The Buildings of England: London 4: North' (Penguin, 1998); Tristan Kirk, 'Design prize won by Enfield Town Library', Enfield Independent, 21 January 2011; The Paul Drury Partnership for LB Enfield, 'Enfield Town Conservation Area Character Appraisal', 2006 (1)

<1> London Parks and Gardens Trust, 2007, *London Parks and Gardens Trust Site Database* (Website). SLO78826.

Sources

- (1) Website: London Parks and Gardens Trust. 2007. London Parks and Gardens Trust Site Database. <http://www.londongardensonline.org.uk>.

Associated resources - None recorded

Location

HER Number	MLO104101	Site Name	Cecil Road/Church Street [Library Green], Enfield, EN2 6TH {20th century public garden}
-------------------	-----------	------------------	--

National Grid Reference

Centred TQ 3248 9652 (64m by 92m)

TQ39NW

Dispersed

Administrative Areas

Borough

ENFIELD

Address/Historic Names

Library Green, Cecil Road, Enfield, London, EN2 6TH

Library Green, Church Street, Enfield, London, EN2 6TH

Designations, Statuses and Scorings**Associated Designations - None recorded****Other Statuses and Cross-References - None recorded****Ratings and Scorings - None recorded**

Land Use**Associated Historic Landscape Character Records - None recorded****Other Land Classes - None recorded**

Related Monuments - None Recorded

Finds - None recorded

Associated Events/Activities - None recorded

Associated Individuals/Organisations

Ho, May - Greater London Archaeology Advisory Service

GIS Record Created

Ho, May - Greater London Archaeology Advisory Service

Compiler

Greater London Archaeology Advisory Service

GIS Record Created

Greater London Archaeology Advisory Service

Compiler

HER Number	MLO104106	Site Name	Cecil Road/Essex Road [Town Park], Enfield, EN2 {19th/20th century public park}
-------------------	-----------	------------------	---

HER Number	Site Name	Record Type
MLO104106	Cecil Road/Essex Road [Town Park], Enfield, EN2 {19th/20th century public park}	Park

Town Park is a surviving fragment along with Bush Hill Park Golf Course of the pre-Elizabethan Old Park estate of Enfield Manor. In 1894 Enfield UDC purchased some of the estate lands and Town Park was laid out and opened in 1902.

Monument Types and Dates

RIVER (Post Medieval to Modern - 1613 AD? to 2050 AD)

Evidence	DESIGNED LANDSCAPE
----------	--------------------

ROSE GARDEN (Modern - 2000 AD? to 2050 AD)

Evidence	BOTANICAL FEATURE
----------	-------------------

DRINKING FOUNTAIN (Modern - 2001 AD? to 2050 AD)

Evidence	STRUCTURE
----------	-----------

(Former Type) LAKE? (Unknown to Modern)

Evidence	DEMOLISHED STRUCTURE
----------	----------------------

Description and Sources

Description

The village of Enfield, at one time called Enfield Green and later Enfield Town, was one of the largest mediaeval parishes in Middlesex and a fully cultivated area by the time of the Domesday Survey. To the west was the 3,250 hectare royal hunting park of Enfield Chase. The connection with royalty and the proximity to London contributed to the gentry moving to Enfield from the 17th century onwards, who built fine houses here such as Chase Side House, its site now that of Enfield Central Library across Cecil Road from the public park. Town Park is a surviving fragment, along with Bush Hill Park Golf Course (q.v.), of the Old Park estate that dated back to pre-Elizabethan times, part of which later became the estates of Chase Side House and Chase Park.

The public park and private golf course are divided by a remnant, now ornamental, of the Enfield Loop of the New River. The New River was engineered by Sir Hugh Myddelton, a goldsmith by trade who, as a member of the House of Commons Committee considering water shortage in London, offered to undertake a scheme to bring water 38 miles from Amwell Springs in Hertfordshire through Enfield to Islington. Work began in 1609 with financial backing from James I, and was completed in 1613. In 1859 the portion of the Loop around Enfield village was straightened, and in 1890 it was piped underground thereby making this stretch redundant. It was saved from being infilled by a public campaign that lobbied for its preservation for its ornamental value.

In 1736 the Old Park Estate was purchased by Samuel Clayton for £7,000, at that time consisting of 230 acres, to which 33 acres were later added as a result of the 1777 Enclosure Act. The mansion, probably a ranger's lodge, and 200 acres were purchased by Mrs Winchester Lewis in 1825, although part was subsequently resold. Chase Park was a portion of the Old Park estate consisting of 34 acres of land, which Thomas Cotton had purchased from Mr Clayton in 1811. The former Chase Park house had stood near the entrance lodge from Chase Green. In 1822 Cotton sold Chase Park to Mr Browning, who demolished the house and built a mansion where the Magistrates Courts now stand in Windmill Hill. In 1832 he conveyed the estate to his son-in-law, William Carr, who had previously purchased 56 acres of adjoining land from Mrs Winchester Lewis. At around this time the New River Company formed the ornamental water known as 'Carr's Basin' on which William Carr had the right to fish and use a boat. This remains in the stretch of the New River on the western boundary of Town Park, where it broadens out and has a tree- and shrub-covered island.

In 1859 Francis Bryant Adams purchased the then 76 acre Chase Park estate for £15,000. To the east, Chase Side House and its grounds formed another portion of the Old Park estate, which had once extended to include Enfield Palace and its gardens. Part of the land had been sold off from 1629 onwards. In the C19th a number of trees on Chase Green still marked the former Old Park boundary, including a fine elm that was damaged in a bonfire on 5th November 1836 and some weeks later was blown down by strong winds. There was probably a 17th century house where Chase Side House stood, which was purchased in 1826 by James Farrer Steadman, who also purchased further land from Mr Clayton's Old Park estate. His widow married William Everett, and in the Everetts' time Chase Side House was described as a 'handsome villa' overlooking 'about five acres of pleasure grounds (. . .) and a prospect of the park-like scenery of about thirty acres to the south'. William Keane in 'The Beauties of Middlesex' (1850) described Everett as 'a gentleman of considerable taste in all that belongs to the departments of horticulture, floriculture,&c.'. The kitchen garden contained an extensive vinery and cucumber pit, and his pleasure grounds led to St Andrew's Church (q.v.) along a 'winding walk . . . Bounded, on each side, by festoons of roses hanging from pillar to pillar for some considerable distance, until it enters the shrubbery to the gardener's cottage and to the orange-house'. Mrs Everett became well-known locally for her benevolence and hospitality, and she actively encouraged celebrating May Day and other festivals by opening the grounds of their houses. In 1883 a font was dedicated to her at St Mary Magdalene Church (q.v.). After Mrs Everett's death in 1865 the Chase Side House estate was purchased by Phillip Twells MP, a banker for the City of London, and it remained in the Twells family until the death of Mrs Georgina Twells in

1898.

A section of the estates of Chase Side House and Chase Park were purchased by Enfield Urban District Council but plans to build a new Town Hall in addition to the Library did not come to fruition. The public park, named Town Park, was created on 23 acres of the land and was opened on 30 July 1902. The bathing lake was opened in 1905, a number of concrete ponds surrounded by rockeries and shrubs, near which an early 20th century pavilion still stands. The first firework display in Town Park took place in May 1935 to mark the Jubilee where it attracted thousands of people.

The New River Loop forms the southern boundary of the park and runs just beyond its western edge from Church Street; a riverside walk runs along the other side of the park railings. With the aid of a Heritage Lottery Fund grant of £1.8million in 1997, the New River Loop Restoration Project commenced in 1998 to restore the historic watercourse, listed bridges and railings, and to regenerate the timber banks of the New River. This included the stretch in Town Park, where work included restoring the banks, providing new paths and other amenities. An additional HLF grant was secured in April 2001, with funding also raised by Enfield Preservation Society, and Thames Water undertook works in lieu of match funding.

The main entrance gates to the park at Cecil Road and those at Essex Road have original cast-iron railings painted black and gold. Just inside the main entrance is a small red granite drinking fountain. The park opens from the main entrance onto hedged rose gardens either side of a wide tarmac path with a central Wellingtonia with circular seating around its trunk and further formal beds beyond. To the south are playing fields and largely open grass leading to the boundary with the golf course and New River Loop, along which new paths were laid in circa 2000 as part of the New River Loop restoration project. An area of Town Park was used as a silt storage lagoon for spoils during the restoration works, which was dried out and used for horticultural purposes.

Towards the east of the park by the pavilion café is a children's play area and the remains of the original bathing lake that once contained three ponds, surrounded by raised beds planted with a variety of ornamental shrubs. Today one of the ponds has an island planted with shrubs and another, which was once a paddling pool, is now an interactive water play park. The park contains a scattering of mature oaks, horse chestnuts along the east side, one notable oak pollard, with lime and horse chestnut along the New River bank. Town Park has won a Green Flag in 2008 - 2010.

Sources consulted:

Revd George Hodson (Church History) and Edward Ford (General History), 'A History of Enfield in the County of Middlesex including its Royal and Ancient Manors, the Chase and the Duchy of Lancaster, with Notices of its Worthies, and its Natural History, Etc. Also an account of The Church and the Charities, and a History of the New River' (Enfield Press, printed by J H Meyers, 1873); David Pam, 'A history of Enfield pt 2: a Victorian suburb 1837-1914'; William Keane 'The Beauties of Middlesex' 1850; Andrew Duncan 'Walking Village London' (New Holland) 1997; Victoria County History; local history leaflets; history on LB Enfield website; The Paul Drury Partnership for LB Enfield, 'Enfield Town Conservation Area Character Appraisal', 2006; David Pam 'The Story of Enfield Chase', Enfield Preservation Society, 1984 (1)

<1> London Parks and Gardens Trust, 2007, *London Parks and Gardens Trust Site Database* (Website). SLO78826.

Sources

- (1) Website: London Parks and Gardens Trust. 2007. London Parks and Gardens Trust Site Database. <http://www.londongardensonline.org.uk>.

Associated resources - None recorded

Location

National Grid Reference

Centred TQ 3249 9621 (370m by 397m)

TQ39NW

Area

Administrative Areas

Borough

ENFIELD

Address/Historic Names

Town Park, Cecil Road, Enfield, London, EN2

Town Park, Essex Road, Enfield, London, EN2

Designations, Statuses and Scorings

Associated Designations - None recorded

Other Statuses and Cross-References - None recorded

HER Number	MLO104106	Site Name	Cecil Road/Essex Road [Town Park], Enfield, EN2 {19th/20th century public park}
-------------------	-----------	------------------	--

Ratings and Scorings - None recorded

Land Use

Associated Historic Landscape Character Records - None recorded

Other Land Classes - None recorded

Related Monuments - None Recorded

Finds - None recorded

Associated Events/Activities - None recorded

Associated Individuals/Organisations

Ho, May - Greater London Archaeology Advisory Service

GIS Record Created

Ho, May - Greater London Archaeology Advisory Service

Compiler

Greater London Archaeology Advisory Service

GIS Record Created

Greater London Archaeology Advisory Service

Compiler

HER Number	Site Name	Record Type
081488/00/00 - MLO6992	CECIL STLAINGS YARD	Monument

Monument Types and Dates

DITCH (Medieval - 1066 AD to 1539 AD)
MARKET GARDEN (Medieval - 1066 AD to 1539 AD)
PIT (Medieval - 1066 AD to 1539 AD)

Description and Sources**Description**

EXC BY G WILLIAMS FOR Enfield Archaeological Society 1979 FOUND A SERIES OF MED AGRICULTURAL DITCHES& ASSOCIATED RUBBISH PITS CONTAINING MEDIEVAL POTTERY IN AN AREA NEAR TOSITE OF ENFIELD PALACE (SEE 080696).

EXCAVATION ROUND UP 1979 (Article in monograph). SLO10803.

DINN J & REYNOLDS S, EXCAVATIONS IN ENFIELD 1977-79 (Article in monograph). SLO10804.

RCHM NMR, EXCAVATIONS INDEX (Unpublished document). SLO10807.

FINDS FROM LAINGS YARD (Artifact). SLO10806.

ENAS - WILLIAMS G, LAINGS YARD, CECIL ST SITE RECORDS (Excavation archive). SLO10805.

Sources

Unpublished document: RCHM NMR. EXCAVATIONS INDEX. PRN 650.

Artifact: FINDS FROM LAINGS YARD. ENAS EXC 1979.

Excavation archive: ENAS - WILLIAMS G. LAINGS YARD, CECIL ST SITE RECORDS.

Article in monograph: DINN J & REYNOLDS S. EXCAVATIONS IN ENFIELD 1977-79. P 113.

Article in monograph: EXCAVATION ROUND UP 1979. P 386.

Associated resources - None recorded**Location****National Grid Reference**

TQ 3272 9643 (point) TQ39NW Point

Administrative Areas

Borough ENFIELD

Address/Historic Names

CECIL RD

CECIL STLAINGS YARD

LAINGS YARD

Designations, Statuses and Scorings**Associated Designations**

Archaeological Priority Area (APA) - Enfield Town Centre Active DLO35153
DLO35153

Other Statuses and Cross-References

Historic Environment Record - 081488/00/00

Active

SHINE Candidate (Possible)

Active

Site of Archaeological Interest - Y

Active

Ratings and Scorings - None recorded

Land Use**Associated Historic Landscape Character Records - None recorded****Other Land Classes - None recorded**

Related Monuments - None Recorded

Finds - None recorded

Associated Events/Activities - None recorded

Associated Individuals/Organisations - None recorded

HER Number	Site Name	Record Type
080665/00/00 - MLO6850	CHURCH ST	Monument

Monument Types and Dates

SETTLEMENT (Early Medieval/Dark Age to Medieval - 410 AD to 1539 AD)

Description and Sources**Description**

MEANS 'EARNA'S CLEARING, 1086 ENEFELDE MANOR OF GEOFFREY DE MANDEVILLE LANDFOR 24 PLOUGHS, MEADOW, WOODLAND, PRIEST, MILL & C. 100 HOUSEHOLDS (PROBABLY SCATTERED IN SEVERAL LOCATIONS)

MORRIS J (ED), *DOMESDAY BOOK MIDDLESEX* (Article in monograph). SLO10644.

EPNS, *ENGLISH PLACE NAMES : MIDDX* (Article in monograph). SLO10645.

WHITAKER CW, *HISTORY OF ENFIELD* (Article in monograph). SLO72240.

Inner London Archaeological Unit, *INDEX* (Unpublished document). SLO10643.

Victoria County History, *MIDDLESEX* (Article in monograph). SLO72241.

Sources

Article in monograph: Victoria County History. MIDDLESEX. P 213-5.

Article in monograph: WHITAKER CW. HISTORY OF ENFIELD. P 26.

Article in monograph: EPNS. ENGLISH PLACE NAMES : MIDDX.

Article in monograph: MORRIS J (ED). DOMESDAY BOOK MIDDLESEX. P 9,9.

Unpublished document: Inner London Archaeological Unit. INDEX. EN AS 1.

Associated resources - None recorded**Location****National Grid Reference**

TQ 3260 9650 (point) TQ39NW Point

Administrative Areas

Borough ENFIELD

Address/Historic Names

CHURCH ST

ENFIELD TOWN

Designations, Statuses and Scorings**Associated Designations**

Archaeological Priority Area (APA) - DLO35153	Enfield Town Centre	Active	DLO35153
---	---------------------	--------	----------

Other Statuses and Cross-References

SHINE Candidate (Possible)	Active
Historic Environment Record - 080665/00/00	Active
Site of Archaeological Interest - Y	Active

Ratings and Scorings - None recorded**Land Use**

Associated Historic Landscape Character Records - None recorded

Other Land Classes - None recorded

Related Monuments - None Recorded

Finds - None recorded

Associated Events/Activities

ELO5100 (Event - Interpretation)

Associated Individuals/Organisations - None recorded

HER Number	Site Name	Record Type
080603/00/00 - MLO20447	Enfield Area {Palaeolithic Implements}	Find Spot

Monument Types and Dates

FINDSPOT (Lower Palaeolithic - 500000 BC to 150001 BC)
 FINDSPOT (Palaeolithic - 500000 BC to 10001 BC)

Description and Sources

Description

SMITH AND WARREN KNOWN TO HAVE FOUND ARTEFACTS IN AREA AND NUMBER OF FINDS NOW IN COLLECTIONS. ROE INCLUDES 1 HANDAXE, 2 RETOUCED & 7 UNRETOUCHEDFLAKES UNDER ENFIELD. SOME OF HANDAXES WYMER MENTIONS UNDER BUSH HILL PARKMAY BE OF A MORE GENERAL PROVINANCE. SEE ALSO RECORD 080567

FLINT ARTEFACT(S) (Artifact). SLO36674.

FLINT ARTEFACT(S) (Artifact). SLO36675.

FLINT ARTEFACT(S) (Artifact). SLO36676.

ROE D, *GAZETTEER OF LOWER AND MIDDLE PALAEOLITHIC SITES* (Article in monograph). SLO36672.

WYMER JJ, *LOWER PALAEOLITHIC ARCHAEOLOGY IN BRITAIN* (Article in monograph). SLO36673.

Sources

Artifact: FLINT ARTEFACT(S).

Artifact: FLINT ARTEFACT(S).

Artifact: FLINT ARTEFACT(S).

Article in monograph: WYMER JJ. *LOWER PALAEOLITHIC ARCHAEOLOGY IN BRITAIN*. P 294.

Article in monograph: ROE D. *GAZETTEER OF LOWER AND MIDDLE PALAEOLITHIC SITES*. P 215.

Associated resources - None recorded

Location

National Grid Reference

TQ 3260 9560 (point) TQ39NW Point

Administrative Areas

Borough ENFIELD

Address/Historic Names - None recorded

Designations, Statuses and Scorings

Associated Designations - None recorded

Other Statuses and Cross-References

SHINE Candidate (Unlikely) Active

Site of Archaeological Interest - Y Active

Historic Environment Record - 080603/00/00 Active

Ratings and Scorings - None recorded

Land Use

Associated Historic Landscape Character Records - None recorded

Other Land Classes - None recorded

Related Monuments - None Recorded

Associated Finds

FLO5399 LITHIC IMPLEMENT (Palaeolithic - 500000 BC to 10001 BC)

FLO5400 LITHIC IMPLEMENT (Lower Palaeolithic - 500000 BC to 150001 BC)

Associated Events/Activities - None recorded

Associated Individuals/Organisations - None recorded

HER Number

MLO98132

Site Name

Enfield Town Centre

Record Type

Monument

An archaeological evaluation and excavation was carried out by C Mayo of Pre-Construct Archaeology on behalf of Gifford and Partners Ltd between 28th February and 29th April 2005. Three trenches were opened, and one of the trenches revealed archaeological remains dating from prehistoric to post medieval period including land boundaries and structures.

Created by R Leggett (22nd September 2006)

Monument Types and Dates

DITCH (Unknown to Late Iron Age)

POST HOLE (Unknown to Late Iron Age)

PIT (Unknown to Medieval)

POST HOLE (Unknown to Medieval)

DITCH (Unknown to Post Medieval)

PIT (Unknown to Post Medieval)

Description and Sources**Description**

An archaeological evaluation and excavation was carried out by C Mayo of Pre-Construct Archaeology on behalf of Gifford and Partners Ltd between 28th February and 29th April 2005. Three trenches were opened, and one of the trenches revealed archaeological remains dating from prehistoric to post medieval period including land boundaries and structures.

Prehistoric features comprise ditches and a posthole. Lithic remains were recovered from the ditches, along with charred grain. It is thought the features formed managed land divisions, with the terminus of one ditch suggesting the presence of an entrance way. The lithics recovered from these features are likely to be Mesolithic or early Neolithic.

Medieval features include post holes and pits. It appears activity increased in the area by the 14th C - a time when Enfield village was developing to the north. Both contained medieval and residual roman pottery. Medieval pottery included south Hertfordshire greyware and a Mill Green jug. The features indicate land divisions (ditches and fencing-lines) and waste disposal.

Later medieval - post medieval activity: Postholes, pits and drains were recorded and thought to be connected to Enfield Palace. Late medieval Hertfordshire glazed ware and transitional red wares were recorded. Post Holes forming a fencing -line were recorded running north-south. Two pieces of lead window cane were recovered from the fill of a posthole.

Post Medieval features include post holes, pits (the size and shape of which suggest gravel extraction pits) and rubbish pits.

the natural gravel was recorded between 31.31m aOD and 30.41m aOD

Pre-Construct Archaeology, 2005, *Enfield Town Centre: Assessment Of An Archaeological Evaluation* (Unpublished document). SLO78006.

Sources

Unpublished document: Pre-Construct Archaeology. 2005. Enfield Town Centre: Assessment Of An Archaeological Evaluation.

Associated resources - None recorded

Location**National Grid Reference**

Centred TQ 32833 96462 (92m by 121m)

TQ39NW

Area

Administrative Areas

Borough

ENFIELD

Address/Historic Names

Enfield Town Centre

Designations, Statuses and Scorings

Associated Designations

Archaeological Priority Area (APA) - DLO35153	Enfield Town Centre	Active	DLO35153
---	---------------------	--------	----------

Other Statuses and Cross-References

LAG number (GLAAS Ref) - 10/149	Active
SHINE Candidate (Possible)	Active
Site of Archaeological Interest - Y	Active
Historic Environment Record - MLO98132	Active
Site Code - SDY01	Active

Ratings and Scorings - None recorded

Land Use**Associated Historic Landscape Character Records - None recorded****Other Land Classes - None recorded**

Related Monuments - None Recorded

Finds - None recorded

Associated Events/Activities

ELO6722	London Road and Cecil Road, Enfield, Evaluation (Area A) (Event - Intervention)
---------	---

Associated Individuals/Organisations

Leggett, Rachael - Greater London Archaeology Advisory Service	Compiler
--	----------

HER Number	Site Name	Record Type
MLO108233	Ice House, London Road, Enfield {Ice House}	Monument

Post medieval ice house located along London Road

Monument Types and Dates

ICEHOUSE (Post Medieval - 1801 AD to 1900 AD?)
Evidence DOCUMENTARY EVIDENCE

Description and Sources

Description

post medieval ice house located along London road, Enfield. (1)

Ordnance Survey, *1st edition (1843-1893)* (Map). SLO79241.

Sources

Map: Ordnance Survey. 1st edition (1843-1893). GIS layer.

Associated resources - None recorded

Location

National Grid Reference

Centred TQ 3286 9579 (16m by 13m) TQ39NW Area

Administrative Areas

Borough ENFIELD

Address/Historic Names

Ice House, London Road, London Road,, Enfield

Designations, Statuses and Scorings

Associated Designations - None recorded

Other Statuses and Cross-References - None recorded

Ratings and Scorings - None recorded

Land Use

Associated Historic Landscape Character Records - None recorded

Other Land Classes - None recorded

Related Monuments - None Recorded

Finds - None recorded

Associated Events/Activities - None recorded

Associated Individuals/Organisations

Glass, Alexandra - Greater London Archaeology Advisory Service	GIS Record Created
Glass, Alexandra - Greater London Archaeology Advisory Service	Compiler

Greater London Archaeology Advisory Service	GIS Record Created
Greater London Archaeology Advisory Service	Compiler

HER Number	Site Name	Record Type
MLO2909	Manor House (The Palace)- site of	Monument

Edward VI erected a manor house (later called 'The Palace') on Enfield Green for Princess Elizabeth circa 1552. It was demolished in 1927.

Monument Types and Dates

MANOR HOUSE (Medieval - 1066 AD to 1539 AD)
PALACE (Medieval - 1066 AD to 1539 AD)
MANOR HOUSE (Medieval to Post Medieval - 1485 AD to 1600 AD)
PALACE (Medieval to Post Medieval - 1485 AD to 1600 AD)
MANOR HOUSE (Post Medieval - 1540 AD to 1900 AD)
PALACE (Post Medieval - 1540 AD to 1900 AD)

Description and Sources

Description

Enfield Manor House was built circa 1552 by Edward VI on Enfield Green for Princess Elizabeth. It was later called The Palace. The Palace was demolished in 1927 and the panelling removed to a house on the East side of Gentleman's Row. The site of 'The Palace' has now been completely redeveloped. (1-20)

- <1> Enfield Archaeological Society, 1984, *The Royal Palaces of Enfield* (Monograph). SLO73124.
- <2> Robinson, W., 1823, *History of Enfield, Vol I, p.102* (Article in monograph). SLO4816.
- <3> Enfield Archaeological Society, 1978, *Excavation Round-Up 1977, p.160* (Article in monograph). SLO4808.
- <4> Enfield Archaeological Society, 1981, *Excavation Round Up- 1980, p.46* (Article in monograph). SLO4809.
- <5> Museum of London, ?, *Museum of London Archaeological Gazeteer, M172* (Unpublished document). SLO4810.
- <6> PEVSNER, ?, *Buildings of Middlesex, p.51* (Article in monograph). SLO4811.
- <7> Dinn J. & Reynolds, S., *Excavations in Enfield 1977-1979, p.110-115* (Article in monograph). SLO4812.
- <8> Edmonton Hundred Historical Society Occasional Papers, 1975, *Elizabethan Enfield, p.10* (Article in monograph). SLO4813.
- <9> Inner London Archaeological Unit, *Index, EN MED 26&27* (Unpublished document). SLO4807.
- <10> Whitaker, C.W., 1911, *History of Enfield, p. 38& 185* (Article in monograph). SLO4815.
- <11> Jones, I.K., 1996?, *Enfield Palace; a new discovery, p. 4-5* (Article in monograph). SLO64352.
- <12> Colvin, H.M., ?, *History of the Kings Works, Vol 4, pt 2, p.87* (Article in monograph). SLO4817.
- <13> Ordnance Survey, *Ordnance Survey Card Index, TQ39 NW10* (Ordnance Survey Archaeological Record Card). SLO31865.
- <14> Armitage P. and Ivens, J., 1978, *Excavations at Palace Gardens, Enfield 1977, p.143-48* (Article in monograph). SLO4819.
- <15> Jones, I.K., 1977, *Palace Garden Excavation; A Documentary Description and History of Enfield Palace* (Article in monograph). SLO4820.
- <16> Enfield Archaeological Society, *Enfield Palace Gardens Site Plans* (Excavation archive). SLO4821.
- <17> Enfield Archaeological Society, 1977, *Enfield Palace Garden Site; Notes, Photos and Letters*. (Excavation archive). SLO4822.
- <18> English Heritage, 1977?, *Excavations Index, PRN 663* (Unpublished document). SLO64351.
- <19> RCHME, *MIDDLESEX, p.22* (Article in monograph). SLO4814.

<20> Enfield Archaeological Society, 1984, *The Royal Palaces of Enfield* (Monograph). SLO73124.

Sources

- (1) Monograph: Enfield Archaeological Society. 1984. The Royal Palaces of Enfield.
- (2) Article in monograph: Robinson, W.. 1823. History of Enfield. P. 102. Vol I, p.102
- (3) Article in monograph: Enfield Archaeological Society. 1978. Excavation Round-Up 1977. P 160. p.160
- (4) Article in monograph: Enfield Archaeological Society. 1981. Excavation Round Up- 1980. P 46. p.46
- (5) Unpublished document: Museum of London. ?. Museum of London Archaeological Gazeteer. M172. M172
- (6) Article in monograph: PEVSNER. ?. Buildings of Middlesex. P 51. p.51
- (7) Article in monograph: Dinn J. & Reynolds, S.. Excavations in Enfield 1977-1979. P.110-15. p.110-115
- (8) Article in monograph: Edmonton Hundred Historical Society Occasional Papers. 1975. Elizabethan Enfield. P 10. p.10
- (9) Unpublished document: Inner London Archaeological Unit. Index. EN MED 26 & 27. EN MED 26&27
- (10) Article in monograph: Whitaker, C.W.. 1911. History of Enfield. P 38 & 185. p. 38& 185
- (11) Article in monograph: Jones, I.K.. 1996?. Enfield Palace; a new discovery. PP 4-5. p. 4-5
- (12) Article in monograph: Colvin, H.M.. ?. History of the Kings Works. p. 87. Vol 4, pt 2, p.87
- (13) Ordnance Survey Archaeological Record Card: Ordnance Survey. Ordnance Survey Card Index. TQ39 NW10
- (14) Article in monograph: Armitage P. and Ivens, J.. 1978. Excavations at Palace Gardens, Enfield 1977. P. 143-8. p.143-48
- (15) Article in monograph: Jones, I.K.. 1977. Palace Garden Excavation; A Documentary Description and History of Enfield Palace.
- (16) Excavation archive: Enfield Archaeological Society. Enfield Palace Gardens Site Plans.
- (17) Excavation archive: Enfield Archaeological Society. 1977. Enfield Palace Garden Site; Notes, Photos and Letters..
- (18) Unpublished document: English Heritage. 1977?. Excavations Index. PRN 663. PRN 663
- (19) Article in monograph: RCHME. MIDDLESEX. P 22. p.22
- (20) Monograph: Enfield Archaeological Society. 1984. The Royal Palaces of Enfield.

Associated resources - None recorded

Location

National Grid Reference

TQ 3270 9650 (point)

TQ39NW

Point

Administrative Areas

Borough

ENFIELD

Address/Historic Names

Enfield Manor House (Enfield Palace)

Palace Gardens, Church Street, Enfield

Designations, Statutes and Scorings

Associated Designations

Archaeological Priority Area (APA) -
DLO35153

Enfield Town Centre

Active

DLO35153

Other Statutes and Cross-References

SHINE Candidate (Possible)	Active
Historic Environment Record - MLO2909	Active
Monument Protection Program - Y	Active
Previous HER/SMR reference - 080696/00/00	Active
Site of Archaeological Interest - Y	Active

Ratings and Scorings - None recorded

Land Use

Associated Historic Landscape Character Records - None recorded

Other Land Classes

Landuse	Commerce,shop
---------	---------------

Related Monuments

MLO67650	Palace Garden	Functional Association
----------	---------------	------------------------

Finds - None recorded

Associated Events/Activities

ELO7513	Excavation at Palace Gardens, Enfield (Event - Intervention)
ELO7512	Palace Garden, Enfield; Watching Brief (Event - Intervention)

Associated Individuals/Organisations - None recorded

HER Number	Site Name	Record Type
080700/00/00 - MLO6538	MARKET PLACE	Monument

Monument Types and Dates

SHOP (Medieval - 1066 AD to 1539 AD)

Description and Sources**Description**

5 SHOPS ARE MENTIONED IN DOCUMENTS OF 1340 NEXT TO THE MANOR HOUSE (ENFIELDPALACE). ANOTHER WAS ADDED 1370. SHAMBLES ADDED 1419

Inner London Archaeological Unit, *INDEX* (Unpublished document). SLO10319.

TITLE UNKNOWN (Article in monograph). SLO10320.

Sources

Article in monograph: *TITLE UNKNOWN*. P 7.

Unpublished document: Inner London Archaeological Unit. *INDEX*. EN MED 31.

Associated resources - None recorded**Location****National Grid Reference**

TQ 3270 9650 (point)	TQ39NW	Point
----------------------	--------	-------

Administrative Areas

Borough	ENFIELD
---------	---------

Address/Historic Names

CHURCH ST

MARKET PLACE

THE TOWN

Designations, Statuses and Scorings**Associated Designations**

Archaeological Priority Area (APA) - DLO35153	Enfield Town Centre	Active	DLO35153
---	---------------------	--------	----------

Other Statuses and Cross-References

Site of Archaeological Interest - Y	Active
Historic Environment Record - 080700/00/00	Active
SHINE Candidate (Possible)	Active

Ratings and Scorings - None recorded**Land Use****Associated Historic Landscape Character Records - None recorded****Other Land Classes - None recorded****Related Monuments - None Recorded****Finds - None recorded**

Associated Events/Activities - None recorded

Associated Individuals/Organisations - None recorded

HER Number	Site Name	Record Type
080696/02/00 - MLO33391	PALACE GDNS	Monument

Monument Types and Dates

GARDEN BUILDING (Post Medieval - 1540 AD to 1900 AD)

Description and Sources

Description

BRICK WALLS, CIRCULAR FLOOR & STOKE HOLE BELIEVED TO BELONG TO GARDEN DEVELOPMENTS OF DR UVEDALE, WHO IS KNOWN TO HAVE BUILT A HEATED HOUSE

Sources - None recorded

Associated resources - None recorded

Location

National Grid Reference

TQ 3270 9650 (point) TQ39NW Point

Administrative Areas

Borough ENFIELD

Address/Historic Names

ENFIELD PALACE

PALACE GDNS

Designations, Statuses and Scorings

Associated Designations

Archaeological Priority Area (APA) - DLO35153	Enfield Town Centre	Active	DLO35153
---	---------------------	--------	----------

Other Statuses and Cross-References

Historic Environment Record - 080696/02/00	Active
SHINE Candidate (Possible)	Active
Site of Archaeological Interest - Y	Active

Ratings and Scorings - None recorded

Land Use

Associated Historic Landscape Character Records - None recorded

Other Land Classes - None recorded

Related Monuments - None Recorded

Finds - None recorded

Associated Events/Activities - None recorded

Associated Individuals/Organisations - None recorded

HER Number	Site Name	Record Type
080696/01/00 - MLO38364	PALACE GDNS	Monument

Monument Types and Dates

WALL (Medieval to Post Medieval - 1485 AD to 1600 AD)

Description and Sources**Description**

SITWATCHING BY Enfield Archaeological Society DURING THE CONSTRUCTION OF A SHOPPING PRECINCT AT PALACE GARDENS REVEALED PART OF A WALL WITH TUDOR BRICKWORK, SURVIVING IN A POSTMEDIEVAL STOKE-HOLE, POSSIBLY PART OF THE BOUNDARY WALL. FURTHER POSSIBLE WALLS ASSOCIATED WITH THE PALACE WERE SEEN IN SITE WATCHING BY Enfield Archaeological Society 1980.

Sources - None recorded**Associated resources - None recorded****Location****National Grid Reference**

TQ 3270 9650 (point) TQ39NW Point

Administrative Areas

Borough ENFIELD

Address/Historic Names

ENFIELD PALACE

PALACE GDNS

Designations, Statuses and Scorings**Associated Designations**

Archaeological Priority Area (APA) - DLO35153	Enfield Town Centre	Active	DLO35153
---	---------------------	--------	----------

Other Statuses and Cross-References

Historic Environment Record - 080696/01/00	Active
Site of Archaeological Interest - Y	Active
SHINE Candidate (Possible)	Active

Ratings and Scorings - None recorded**Land Use****Associated Historic Landscape Character Records - None recorded****Other Land Classes - None recorded****Related Monuments - None Recorded****Finds - None recorded****Associated Events/Activities - None recorded****Associated Individuals/Organisations - None recorded**

HER Number	Site Name	Record Type
081485/00/00 - MLO6990	PALACE GDNS	Monument

Monument Types and Dates

OCCUPATION SITE (Medieval - 1066 AD to 1539 AD)

SURFACE (Medieval - 1066 AD to 1539 AD)

Description and Sources**Description**

EXCAVATIONS BY Enfield Archaeological Society IN 1977, IN ADVANCE OF THE NEW SHOPPING PRECINCT, IN AN AREA LYING IMMEDIATELY WEST OF THE SITE OF ENFIELD PALACE (SMR REF 080696) REVEALED LATE 17TH CENTURY TUDOR POTTERY & A MEDIEVAL GRAVEL FLOOR. THERE WAS ALSO 12/13TH CENTURY POTTERY & A COIN OF HENRY II.

EXCAVATION ROUND UP 1977 (Article in monograph). SLO10799.

DINN J & REYNOLDS S, *EXCAVATIONS AT ENFIELD 1977-79* (Article in monograph). SLO10800.ARMITAGE P & IVENS J, *EXCAVATIONS AT PALACE GDNS* (Article in monograph). SLO10798.DINN J & REYNOLDS S, *REPORT OF EXCAVATIONS IN ENFIELD 1977-79* (Unpublished document). SLO10801.**Sources**

Unpublished document: DINN J & REYNOLDS S. REPORT OF EXCAVATIONS IN ENFIELD 1977-79.

Article in monograph: DINN J & REYNOLDS S. EXCAVATIONS AT ENFIELD 1977-79. P 110.

Article in monograph: EXCAVATION ROUND UP 1977. P 160.

Article in monograph: ARMITAGE P & IVENS J. EXCAVATIONS AT PALACE GDNS. P 143.

Associated resources - None recorded**Location****National Grid Reference**

TQ 3270 9650 (point) TQ39NW Point

Administrative Areas

Borough ENFIELD

Address/Historic Names

PALACE GDNS

Designations, Statuses and Scorings**Associated Designations**

Archaeological Priority Area (APA) - DLO35153	Enfield Town Centre	Active	DLO35153
---	---------------------	--------	----------

Other Statuses and Cross-References

SHINE Candidate (Possible)	Active
Site of Archaeological Interest - Y	Active
Historic Environment Record - 081485/00/00	Active

Ratings and Scorings - None recorded**Land Use****Associated Historic Landscape Character Records - None recorded****Other Land Classes - None recorded**

HER Number

081485/00/00 - **Site Name** PALACE GDNS

Related Monuments - None Recorded

Finds - None recorded

Associated Events/Activities - None recorded

Associated Individuals/Organisations - None recorded

HER Number	Site Name	Record Type
081486/00/00 - MLO2805	PALACE MEWS	Monument

Monument Types and Dates

DITCH (Medieval - 1066 AD to 1539 AD)
 PIT (Medieval - 1066 AD to 1539 AD)
 POST HOLE (Medieval - 1066 AD to 1539 AD)

Description and Sources**Description**

EXC BY G WILLIAMS FOR Enfield Archaeological Society 1977 FOUND DITCHES, PITS, POSSIBLE POSTHOLE & SOME SOUTH HERTFORDSHIRE POTTERY.

DINN J & REYNOLDS S, *EXCAVATIONS IN ENFIELD 1977-79* (Article in monograph). SLO4443.

DINN J & REYNOLDS S, *EXCAVATIONS IN ENFIELD 1977-79* (Unpublished document). SLO4444.

FINDS FROM PALACE MEWS (Artifact). SLO4446.

ENAS - WILLIAMS G, *PALACE MEWS SITE RECORDS* (Excavation archive). SLO4445.

Sources

Artifact: FINDS FROM PALACE MEWS. ENAS EXC 1977 (G WILLIAMS).
 Excavation archive: ENAS - WILLIAMS G. PALACE MEWS SITE RECORDS.
 Unpublished document: DINN J & REYNOLDS S. EXCAVATIONS IN ENFIELD 1977-79.
 Article in monograph: DINN J & REYNOLDS S. EXCAVATIONS IN ENFIELD 1977-79. P 112.

Associated resources - None recorded**Location****National Grid Reference**

TQ 3270 9653 (point) TQ39NW Point

Administrative Areas

Borough ENFIELD

Address/Historic Names

PALACE MEWS

Designations, Statuses and Scorings**Associated Designations**

Archaeological Priority Area (APA) - DLO35153	Enfield Town Centre	Active	DLO35153
---	---------------------	--------	----------

Other Statuses and Cross-References

Site of Archaeological Interest - Y	Active
Historic Environment Record - 081486/00/00	Active
SHINE Candidate (Possible)	Active

Ratings and Scorings - None recorded**Land Use****Associated Historic Landscape Character Records - None recorded****Other Land Classes - None recorded**

Related Monuments - None Recorded

Finds - None recorded

Associated Events/Activities - None recorded

Associated Individuals/Organisations - None recorded

HER Number	Site Name	Record Type
080711/00/00 - MLO20720	PARK CRESCENT	Monument

Monument Types and Dates

HEARTH (Roman - 43 AD to 409 AD)

HEARTH (Post Medieval - 1540 AD to 1900 AD)

Description and Sources**Description**

FARMER WHO RENTED BROOMFIELD REPORTED HEARTH SET IN BRICKWORK ? ROMAN FINDS ALSO MADE HERE (SEE 080620) ONLY EVIDENCE THAT THIS REFERS TO THE FINDING OF A ROMAN HEARTH. BROOMFIELD IS SHOWN ON THE ENCLOSURE MAP OF 1801-3 & COVERSAN AREA NOW OCCUPIED BY PARK CRESCENT, WALSINGHAM RD, ESSEX RD, SYDNEY RD, RALEIGH RD & CECIL RD.

ROBINSON W, *HISTORY OF ENFIELD* (Article in monograph). SLO37168.

Ordnance Survey, *Ordnance Survey Card Index, TQ 39 NW 30 & 39 SW 26* (Ordnance Survey Archaeological Record Card). SLO31865.

Sources

Article in monograph: ROBINSON W. HISTORY OF ENFIELD. P 53.

Ordnance Survey Archaeological Record Card: Ordnance Survey. Ordnance Survey Card Index. TQ 39 NW 30 & 39 SW 26

Associated resources - None recorded**Location****National Grid Reference**

TQ 3290 9603 (point)

TQ39NW

Point

Administrative Areas

Borough

ENFIELD

Address/Historic Names

BROOMFIELD (FORMERLY)

ESSEX RD

PARK CRESCENT

Designations, Statuses and Scorings**Associated Designations - None recorded****Other Statuses and Cross-References**

Site of Archaeological Interest - Y

Active

SHINE Candidate (Possible)

Active

Historic Environment Record - 080711/00/00

Active

Ratings and Scorings - None recorded**Land Use****Associated Historic Landscape Character Records - None recorded****Other Land Classes - None recorded**

Related Monuments - None Recorded

Finds - None recorded

Associated Events/Activities - None recorded

Associated Individuals/Organisations - None recorded

HER Number	Site Name	Record Type
080620/00/00 - MLO12151	PARK CRESCENT (NEAR)	Monument

Monument Types and Dates

CEMETERY (Roman - 43 AD to 409 AD)

Description and Sources

Description

MANY ROMAN FINDS ARE RECORDED AS FROM MELLISHS GRAVEL PIT AT BROOMFIELD, SITE NOW NEAR PARK CRESCENT, ENFIELD. BURIALS, BONES, NAILS, COINS, POTTERY ARE MENTIONED, FOUND 1816 ETC.

AML, *AML* (Unpublished document). SLO21597.

STURGES GW, *EDMONTON PAST AND PRESENT* (Article in monograph). SLO21600.

GILLAM GR, *EXCAVATION OF A ROMANO-BRITISH SITE AT EDMONTON* (Article in monograph). SLO21605.

ROBINSON W, *HISTORY OF ENFIELD* (Article in monograph). SLO21603.

WHITAKER CW, *HISTORY OF ENFIELD* (Article in monograph). SLO21596.

Inner London Archaeological Unit, *INDEX* (Unpublished document). SLO21595.

SHARPE M, *MIDDLESEX IN BRITISH, ROMAN & SAXON TIMES* (Article in monograph). SLO21604.

Museum of London, *MOLLM AG* (Unpublished document). SLO21602.

Ordnance Survey, *Ordnance Survey Card Index, TQ 39 NW 5 & 30; TQ 39 SW 26* (Ordnance Survey Archaeological Record Card). SLO31865.

GILLAM G, *PREHISTORIC & ROMAN ENFIELD* (Article in monograph). SLO21606.

TBAOG, *ROMAN SITE LIST* (Unpublished document). SLO21601.

ENAS, *ROMAN SITES AND FINDS* (Article in monograph). SLO21599.

Sources

Ordnance Survey Archaeological Record Card: Ordnance Survey. Ordnance Survey Card Index. TQ 39 NW 5 & 30; TQ 39 SW 26

Article in monograph: GILLAM G. PREHISTORIC & ROMAN ENFIELD. P 19.

Article in monograph: GILLAM GR. EXCAVATION OF A ROMANO-BRITISH SITE AT EDMONTON. P 6.

Article in monograph: SHARPE M. MIDDLESEX IN BRITISH, ROMAN & SAXON TIMES. P 113.

Article in monograph: ROBINSON W. HISTORY OF ENFIELD. P 57.

Unpublished document: Museum of London. MOLLM AG. F476.

Unpublished document: TBAOG. ROMAN SITE LIST. NO 7.

Article in monograph: STURGES GW. EDMONTON PAST AND PRESENT.

Article in monograph: ENAS. ROMAN SITES AND FINDS. P 3.

Unpublished document: AML. AML. 209.

Article in monograph: WHITAKER CW. HISTORY OF ENFIELD. P 21.

Unpublished document: Inner London Archaeological Unit. INDEX. EN ROM 12.

Associated resources - None recorded

Location

National Grid Reference

TQ 3290 9603 (point) TQ39NW Point

Administrative Areas

Borough ENFIELD

Address/Historic Names

BROOMFIELD (FORMERLY)

MELLISHS PIT

PARK CRESCENT (NEAR)

Designations, Statuses and Scorings**Associated Designations - None recorded****Other Statuses and Cross-References**

Site of Archaeological Interest - Y	Active
Monument Protection Program - Y	Active
SHINE Candidate (Possible)	Active
Historic Environment Record - 080620/00/00	Active

Ratings and Scorings - None recorded

Land Use**Associated Historic Landscape Character Records - None recorded****Other Land Classes - None recorded**

Related Monuments - None Recorded

Associated FindsFLO3473 FIND UNCLASSIFIED (Roman - 43 AD to 409 AD)

Associated Events/Activities - None recorded

Associated Individuals/Organisations - None recorded

HER Number	Site Name	Record Type
082156/00/00 - MLO20765	SYDNEY RD	Monument

Monument Types and Dates

WALL (Post Medieval - 1540 AD to 1900 AD)

Description and Sources**Description**

EXC BY J IVENS OF Enfield Archaeological Society 1980 EXAMINED A WALL SEEN IN A SERVICE TRENCH

RCHM NMR, *EXCAVATIONS INDEX* (Unpublished document). SLO37331.*NOTE OF EXCAVATION* (Article in monograph). SLO37332.ENAS - IVENS J, *SYDNEY RD ENFIELD, SITE PHOTOS NEGS & SLIDES* (Excavation archive). SLO37334.*TITLE UNKNOWN - NOTE OF EXCAVATION* (Article in monograph). SLO37333.**Sources**

Excavation archive: ENAS - IVENS J. SYDNEY RD ENFIELD, SITE PHOTOS NEGS & SLIDES.

Article in monograph: TITLE UNKNOWN - NOTE OF EXCAVATION.

Article in monograph: NOTE OF EXCAVATION. P 60.

Unpublished document: RCHM NMR. EXCAVATIONS INDEX. PRN 702.

Associated resources - None recorded**Location****National Grid Reference**

TQ 3275 9650 (point) TQ39NW Point

Administrative Areas

Borough ENFIELD

Address/Historic Names

SYDNEY RD

Designations, Statutes and Scorings**Associated Designations**

Archaeological Priority Area (APA) - DLO35153	Enfield Town Centre	Active	DLO35153
---	---------------------	--------	----------

Other Statutes and Cross-References

SHINE Candidate (Possible) Active

Site of Archaeological Interest - Y Active

Historic Environment Record - 082156/00/00 Active

Ratings and Scorings - None recorded**Land Use****Associated Historic Landscape Character Records - None recorded****Other Land Classes - None recorded****Related Monuments - None Recorded****Finds - None recorded**

Associated Events/Activities - None recorded

Associated Individuals/Organisations - None recorded

HER Number	MLO105262	Site Name	The Town, (No 11-14), Enfield {World War One Convalescent Garden Events}
-------------------	-----------	------------------	--

HER Number	Site Name	Record Type
MLO105262	The Town, (No 11-14), Enfield {World War One Convalescent Garden Events}	Monument

The rear of Enfield Palace was used to entertain World War One soldiers with concerts while they convalesced.

Monument Types and Dates

GARDEN (World War One - 1914 AD? to 1918 AD?)
Evidence DOCUMENTARY EVIDENCE
Evidence DESIGNED LANDSCAPE

Description and Sources

Description

Soldiers pictured in front of the cedar tree in the garden of Enfield Palace seen from the upper floor of the palace. The palace was demolished in 1927 and the site is now under the back part of Pearson's Department Store. During the First World War the site was owned by the Enfield Constitutional Club and the grounds were used to entertain convalescing soldiers through musical concerts. (1)

<1> Council for British Archaeology, 2013, *WW1 Home Front Legacies Project, 803* (Index). SLO82662.

Sources

(1) Index: Council for British Archaeology. 2013. WW1 Home Front Legacies Project. 803

Associated resources - None recorded

Location

National Grid Reference

Centred TQ 32746 96507 (63m by 40m) TQ39NW Area

Administrative Areas

Borough ENFIELD

Address/Historic Names

11-14 The Town, Enfield, London

Designations, Statuses and Scorings

Associated Designations - None recorded

Other Statuses and Cross-References - None recorded

Ratings and Scorings - None recorded

Land Use

Associated Historic Landscape Character Records - None recorded

Other Land Classes - None recorded

Related Monuments - None Recorded

Finds - None recorded

Associated Events/Activities

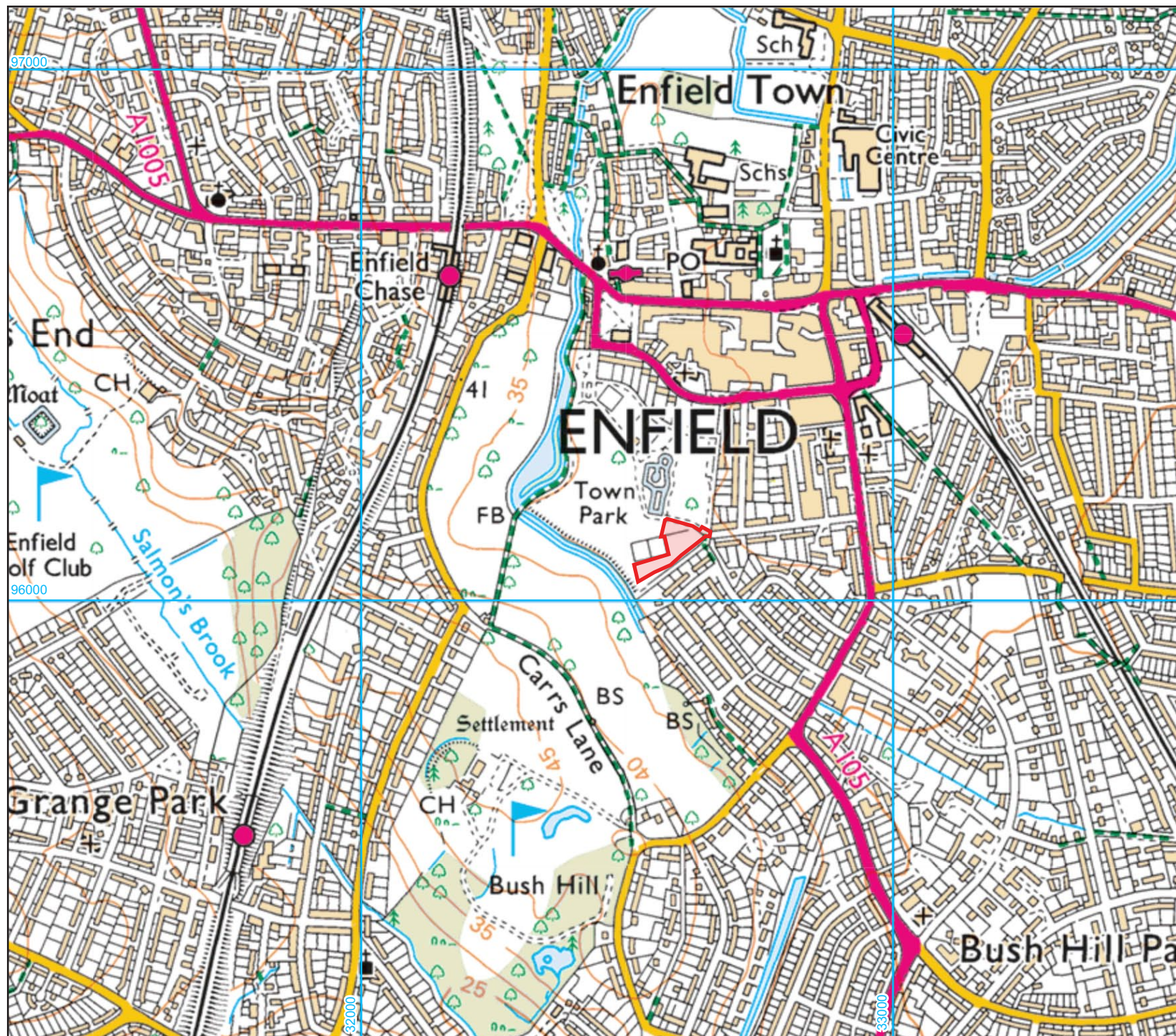
ELO13604 The First World War (Historical Event)

Associated Individuals/Organisations

HER Number	MLO105262	Site Name	The Town, (No 11-14), Enfield {World War One Convalescent Garden Events}
-------------------	-----------	------------------	---

Absolom, Jane - Greater London Archaeology Advisory Service	GIS Record Created
Absolom, Jane - Greater London Archaeology Advisory Service	Reviser

Greater London Archaeology Advisory Service	GIS Record Created
Greater London Archaeology Advisory Service	Reviser



KEY

Site Boundary

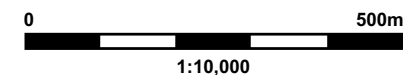
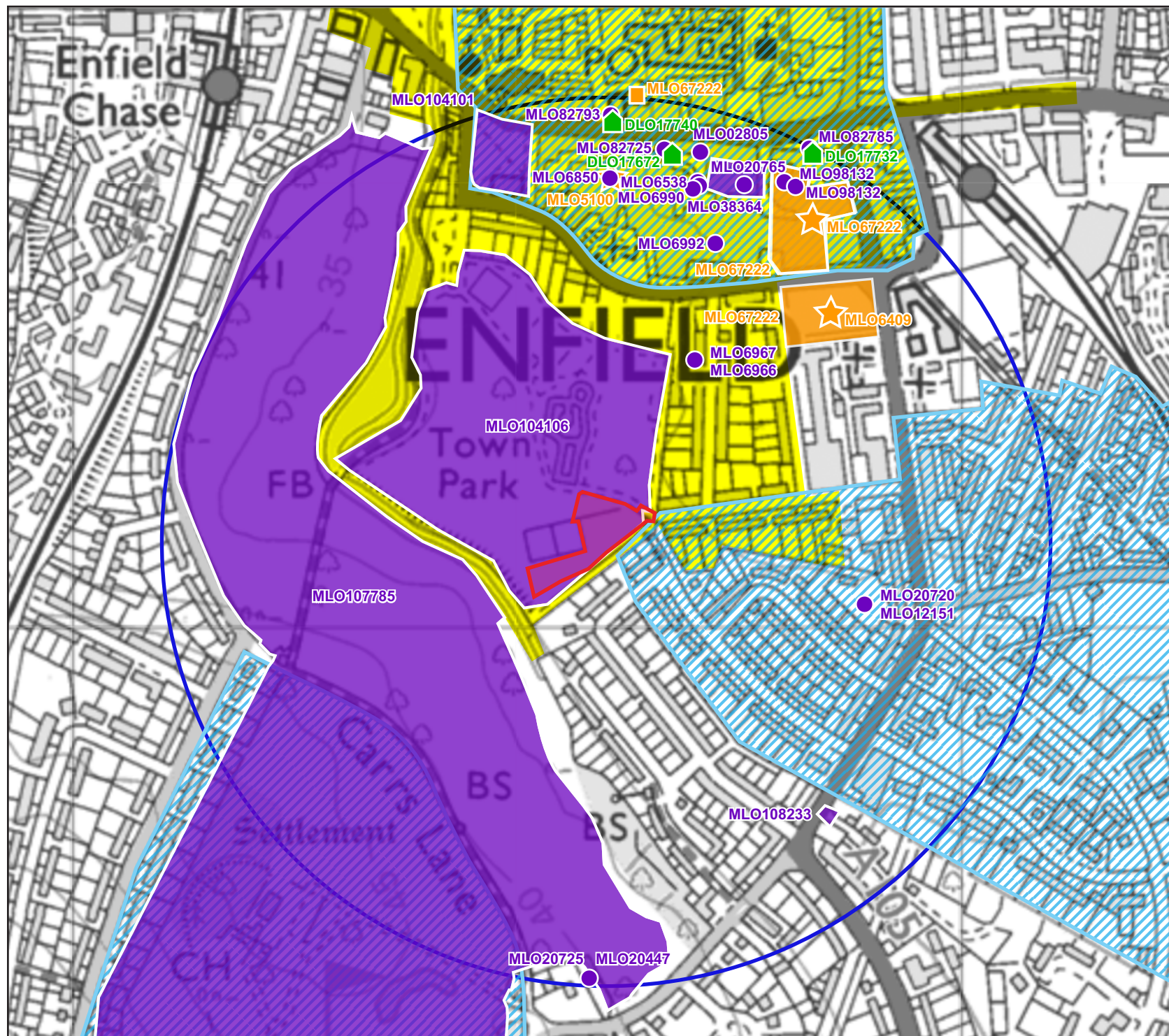


Figure 1: Site Location

Project: Town Park, Enfield.

Date: 04/01/18

Job No: 60252



KEY

- Site Boundary
- Search Area (500m)
- Monument
- Listed Building
- ★ Archaeological Events
- Archaeological Priority Areas
- Enfield Conservation Area

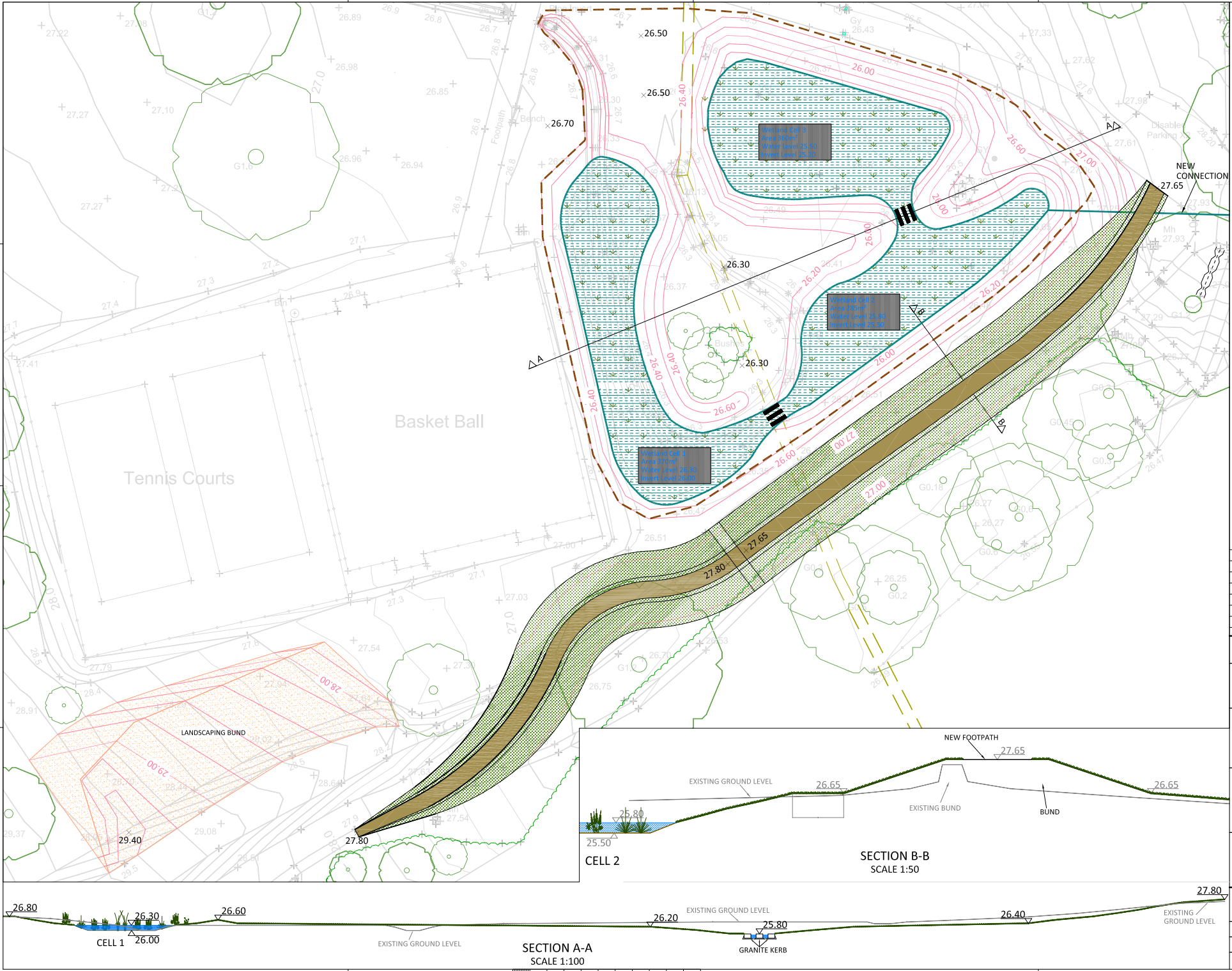


Figure 2: Cultural Heritage Features Map

Project: Town Park, Enfield.

Date: 04/01/18

Job No: 60252





AB Heritage Limited (Head Office)
Jarrow Business Centre, Rolling Mill
Road, Jarrow, South Tyneside, NE32 3DT
Tel: 03333 440 206
e-mail: info@abheritage.co.uk