



Toolerstone, Norley Road, Sandiway, Cheshire CW8 2JN.

November 2017
V 2.0



aeon archaeology



Level 1 Historic Building Record
Project Code: A0138.1
Report no. 0146



aeon archaeology

Toolerstone, Norley Road, Sandiway, Cheshire CW8 2JN.

November 2017 V 2.0

Report no. 0146 v1.0

Level 1 Historic Building Record

Aeon Archaeology
25, Mold Road
Broughton
Chester
CH4 0PQ

Written by: Richard Cooke BA MA MCIfA

Checked by: Josh Dean BA ACIfA



Project Code: A0138.1

Date: 03/11/2017

Client: Mr. Andrew Jeal

info@aeonarchaeology.co.uk

Figures

Figure 01: Location of Toolerstone, Norley Road, Sandiway. Scale 1:20,000 at A4.

Figure 02: Location of Toolerstone, Norley Road, Sandiway. Scale 1:5,000 at A4.

Figure 03: Location and orientation of photographs at Toolerstone (first floor). Scale 1:200 at A4.

Plates

Plate 01: Bedroom 1, from the southwest. Scale 1.0m.

Plate 02: Bedroom 1, from the east. Scale 1.0m.

Plate 03: Bedroom 1, from the northeast. Scale 1.0m.

Plate 04: Hallway, from the south. Scale 1.0m.

Plate 05: Hallway, from the north. Scale 1.0m.

Plate 06: Hallway, from the southeast. Scale 1.0m.

Plate 07: Hallway, from the south. Scale 1.0m.

Plate 08: Hallway, from the north. Scale 1.0m.

Plate 09: Hallway, from the south. Scale 1.0m.

Plate 10: Towel Store, from the southwest. Scale 1.0m.

Plate 11: Bedroom 2, from the southeast. Scale 1.0m.

Plate 12: Bedroom 2, from the southwest. Scale 1.0m.

Plate 13: Bathroom door, from the east. Scale 1.0m.

Plate 14: Bedroom 3, from the east. Scale 1.0m.

Plate 15: Bedroom 3, from the southeast. Scale 1.0m.

Plate 16: Bedroom 4, from the southeast. Scale 1.0m.

Plate 17: Bedroom 4, from the northwest. Scale 1.0m.

Plate 18: Dressing Room, from the east. Scale 1.0m.

Plate 19: Dressing Room, from the northeast. Scale 1.0m.

Plate 20: Bedroom 5, from the east. Scale 1.0m.

Plate 21: Bedroom 5, from the northwest. Scale 1.0m.

Plate 22: Bathroom, from the southeast. Scale 1.0m.

Contents

1.0 INTRODUCTION.....	1
2.0 REQUIREMENTS	2
2.1 Building Record.....	2
3.0 METHOD STATEMENT	3
3.1 Level 1 Record.....	3
3.1.1 Written Account.....	3
3.1.2 Photographs	3
3.1.3 Drawings.....	3
3.2 Processing data, illustration, report and archiving.....	3
4.0 LEVEL 1 HISTORIC BUILDING SURVEY	4
5.0 SOURCES	5

1.0 INTRODUCTION

Aeon Archaeology was commissioned by Mr. Andrew Jeal (owner) to produce a level 1 historic building record of a dwelling known as Toolerstone, Norley Road, Sandiway, Cheshire CW8 2JN (centred on **NGR SJ 60734 71245**) in advance of alteration. Toolerstone is a grade II Listed Building (LB ref: 1287517) as an early 17th Century farmhouse with 18th Century extensions, extended and remodelled in 1913.

The archaeological recording was completed as part of a planning application (Planning Reference: **16/05232/FUL and 16/05233/LBC**) but was undertaken in advance of determination. Planning application has been made by the client for the demolition of six existing internal partitions on the first floor as well as the blocking up of two existing doorways and insertion of two new doorways as part of renovation works.

The decision of the planning application is currently pending (as of 3rd November 2017) however the following statement was made by email by the Cheshire Conservation Officer to the Planning Case Officer:

In order to create a record of the building prior to these changes I suggest a condition be attached to any approvals/consents to secure a Level 1 Building Recording Survey (in accordance with Historic England's guidance Understanding Historic Buildings: A Guide to Good Recording Practice) to include the internal areas in question.'

The Cheshire Conservation Officer did not prepare a mitigation brief for this project, but requested that a level 1 historic building survey be undertaken of the building prior to alteration.

The use of such a condition is in line with guidance set out in paragraph 141, Section 12 (Conserving and Enhancing the Historic Environment) of the National Planning Policy Framework (2012), published by the Department for Communities and Local Government.

This design and all subsequent mitigation will conform to the guidelines specified in English Heritage '*Understanding Historic Buildings: a guide to good recording practice*' (2016) & Standard and Guidance for the Archaeological Investigation and Recording of Standing Buildings or Structures (Chartered Institute for Archaeologists, 2014).

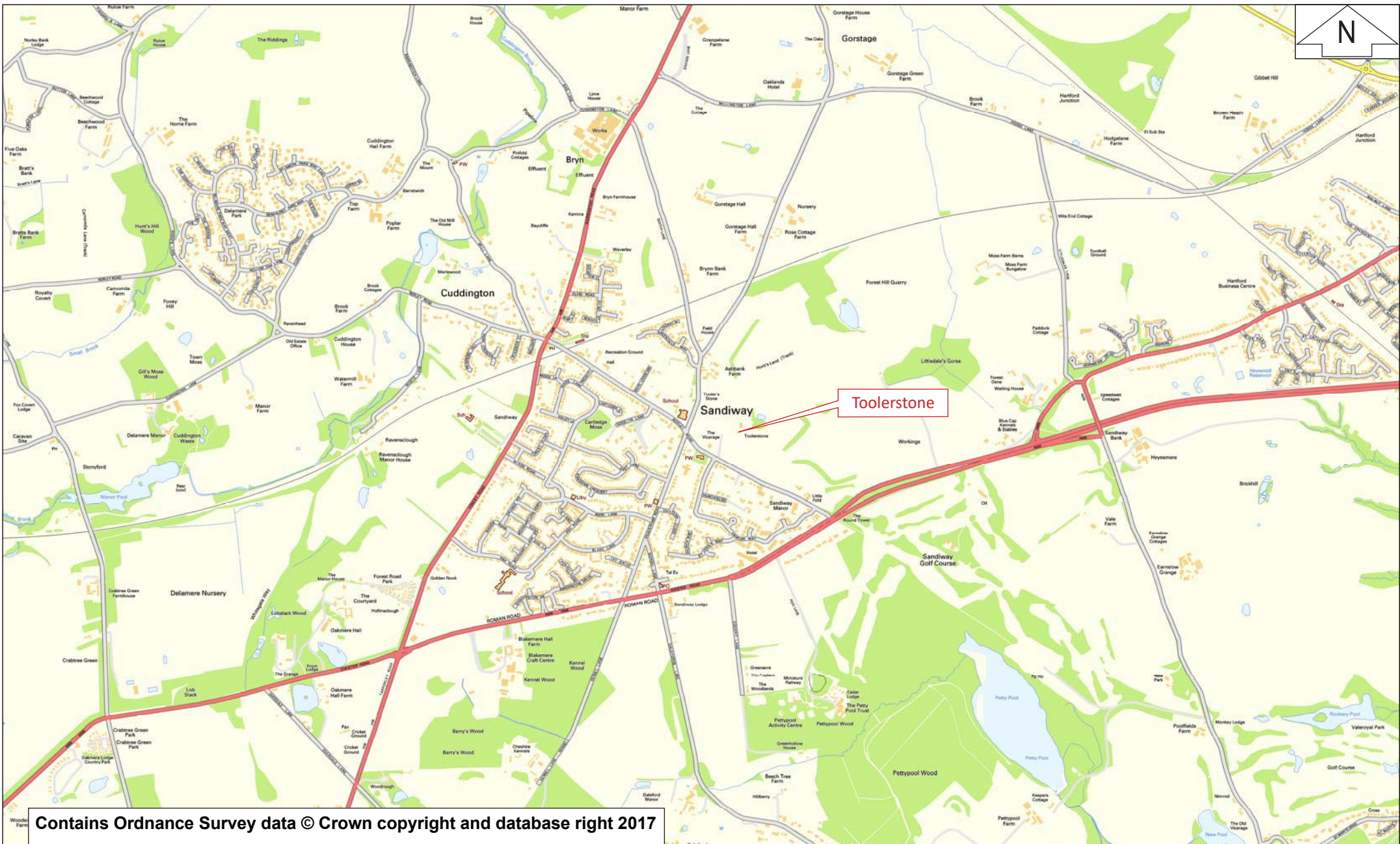
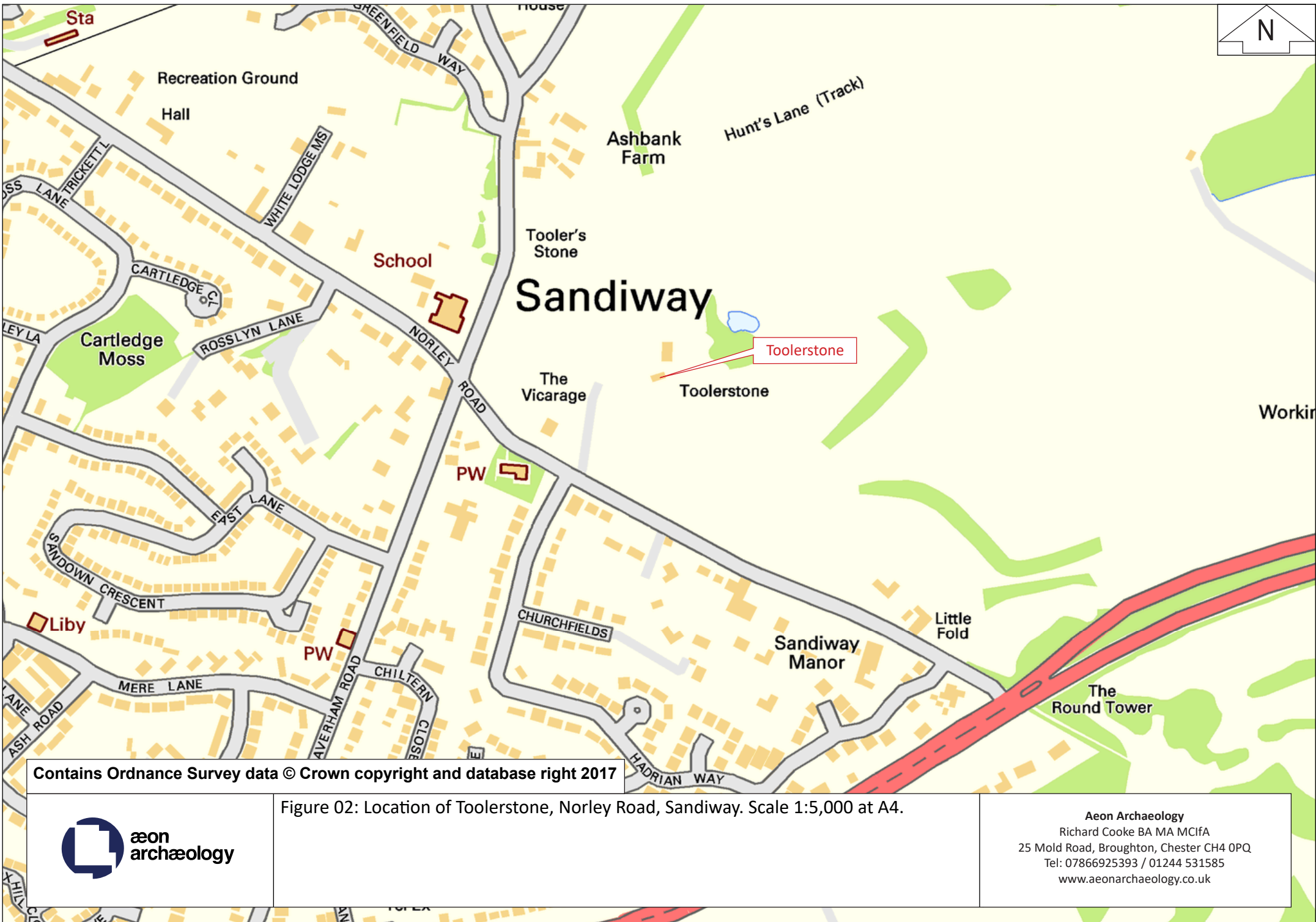


Figure 01: Location of Toolerstone, Norley Road, Sandiway. Scale 1:20,000 at A4.



Aeon Archaeology
 Richard Cooke BA MA MCIFA
 25 Mold Road, Broughton, Chester CH4 0PQ
 Tel: 07866925393 / 01244 531585
 www.aeonarchaeology.co.uk



Contains Ordnance Survey data © Crown copyright and database right 2017

Figure 02: Location of Toolerstone, Norley Road, Sandiway. Scale 1:5,000 at A4.



Aeon Archaeology
 Richard Cooke BA MA MCifA
 25 Mold Road, Broughton, Chester CH4 0PQ
 Tel: 07866925393 / 01244 531585
www.aeonarchaeology.co.uk

2.0 REQUIREMENTS

2.1 Building Record

The requirements were for an archaeological building record of the dwelling at Toolerstone prior to alteration, however should observations or desk-based research suggest the potential for significant features to be encountered during the works, the archaeological contractor should make arrangements to undertake any appropriate supplementary recording work during the development. The Cheshire Conservation Officer had requested that the building record be roughly commensurate with the English Heritage '*Understanding Historic Buildings: a guide to good recording practice*' (2016) **Level 1**.

Both the exterior and the interior of all areas to be impacted upon were viewed and photographed. The location and orientation of photographs were located on existing plans of the property provided by the architect (Squires and Brown).

The detailed photographic record consisted of English Heritage '*Understanding Historic Buildings: a guide to good recording practice*' (2016) elements:

- written account: 1-3
- drawings: 1
- photographs: 1,2,4

3.0 METHOD STATEMENT

3.1 Level 1 Record

3.1.1 Written Account

The written account included:

- The building's precise location as a National Grid Reference and address form;
- A note of any statutory designation and non-statutory designation;
- The date of the record, name(s) of the recorder(s) and archive location;

3.1.2 Photographs

The photographic record included:

- The overall appearance of the principal rooms and circulation areas to be impacted upon.

A Digital SLR (Canon 600D) set to maximum resolution was used throughout.

3.1.3 Drawings

The drawn record included:

- A site plan showing the location and orientation of photographs. This will label all room spaces and indicate any architectural features of note.

3.2 Processing data, illustration, report and archiving

Following completion of the record as outlined above, a report was produced incorporating the following:

- A site location plan
- A plan illustrating the location and direction of photographs
- A full bibliography of sources consulted
- Illustrations, including plans and photographs, will be incorporated within the report.

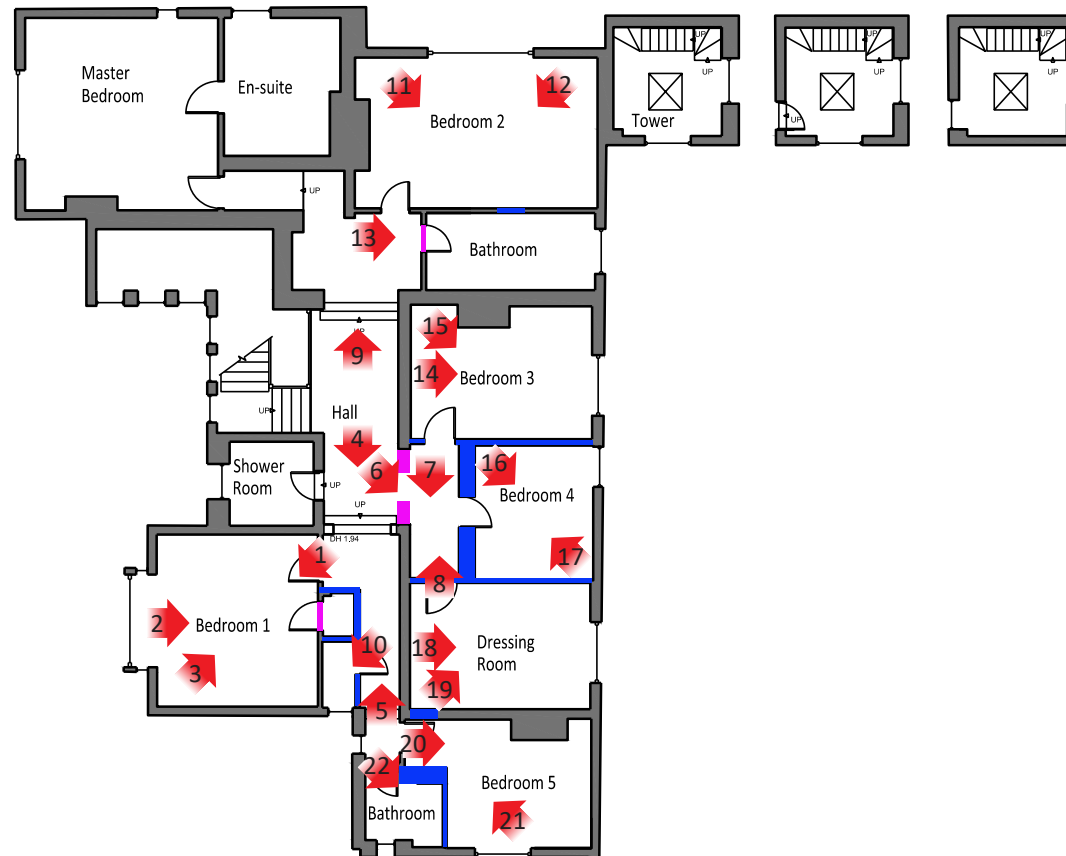
4.0 LEVEL 1 HISTORIC BUILDING SURVEY

(figures 1-3; Plates 1-22)

Toolerstone is located on Norley Road, Sandiway, Cheshire CW8 2JN (centred on **NGR SJ 60734 71245**). It was constructed in the early 17th Century as a farmhouse and was extended in the 18th Century. It was later again extended and remodeled in 1913 by Col. J Saner.

The dwelling is of dressed red sandstone blocks with brick extensions and some 20th Century timber framing. The roof is of Welsh slate with stone ridge and brick chimneys. The building has evolved from a two room gable-entry house into an L-shaped structure.

The level 1 historic building record was undertaken by Richard Cooke BA MA MCifA, archaeological contractor and consultant at Aeon Archaeology on the 27th October 2017. Upon approval from the Client and the Cheshire Conservation Officer the report will be archived with the Cheshire Historic Environment Record (CHER); Oasis online database; and a copy retained at Aeon Archaeology, Chester under project code A0138.1 report 0146.



Reproduced by kind permission of Squires and Brown Architects



Figure 03: Location and orientation of photographs at Toolerstone (first floor).
Scale 1:200 at A4 (walls to be demolished shaded blue; areas to be blocked up shaded pink).

Aeon Archaeology
Richard Cooke BA MA MCifA
25 Mold Road, Broughton, Chester CH4 0PQ
Tel: 07866925393 / 01244 531585
www.aeonarchaeology.co.uk



Plate 01: Bedroom 1, from the southwest. Scale 1.0m.



Plate 02: Bedroom 1, from the east. Scale 1.0m.



Plate 03: Bedroom 1, from the northeast. Scale 1.0m.



Plate 04: Hallway, from the south. Scale 1.0m.



Plate 05: Hallway, from the north. Scale 1.0m.



Plate 06: Hallway, from the southeast. Scale 1.0m.



Plate 07: Hallway, from the south. Scale 1.0m.



Plate 08: Hallway, from the north. Scale 1.0m.



Plate 09: Hallway, from the south. Scale 1.0m.



Plate 10: Towel Store, from the southwest. Scale 1.0m.



Plate 11: Bedroom 2, from the southeast. Scale 1.0m.



Plate 12: Bedroom 2, from the southwest. Scale 1.0m.



Plate 13: Bathroom door, from the east. Scale 1.0m.



Plate 14: Bedroom 3, from the east. Scale 1.0m.



Plate 15: Bedroom 3, from the southeast. Scale 1.0m.



Plate 16: Bedroom 4, from the southeast. Scale 1.0m.



Plate 17: Bedroom 4, from the northwest. Scale 1.0m.



Plate 18: Dressing Room, from the east. Scale 1.0m.



Plate 19: Dressing Room, from the northeast. Scale 1.0m.



Plate 20: Bedroom 5, from the east. Scale 1.0m.



Plate 21: Bedroom 5, from the northwest. Scale 1.0m.



Plate 22: Bathroom, from the southeast. Scale 1.0m.

5.0 SOURCES

Maps.

Ordnance Survey Open Data maps SJ 67.

Secondary Sources

English Heritage: Understanding Historic Buildings: a guide to good recording practice (2016)

Chartered Institute for Archaeologists, 2014: Standard and Guidance for the Archaeological Investigation and Recording of Standing Buildings or Structures

