

# Historical Mapping Legends

## Ordnance Survey County Series 1:10,560

	Gravel Pit		Sand Pit		Other Pits
	Quarry		Shingle		Orchard
	Osiers		Reeds		Marsh
	Mixed Wood		Deciduous		Brushwood
	Fir		Furze		Rough Pasture
	Arrow denotes flow of water		Trigonometrical Station		
	Site of Antiquities		Bench Mark		
	Pump, Guide Post, Signal Post		Well, Spring, Boundary Post		
	•285 Surface Level				
	Sketched Contour		Instrumental Contour		
	Main Roads		Minor Roads		
	Sunken Road		Raised Road		
	Road over Railway		Railway over River		
	Railway over Road		Level Crossing		
	Road over River or Canal		Road over Stream		
	Road over Stream				
	County Boundary (Geographical)				
	County & Civil Parish Boundary				
	Administrative County & Civil Parish Boundary				
	County Borough Boundary (England)				
	County Burgh Boundary (Scotland)				
	Rural District Boundary				
	Civil Parish Boundary				

## Ordnance Survey Plan 1:10,000

	Chalk Pit, Clay Pit or Quarry		Gravel Pit
	Sand Pit		Disused Pit or Quarry
	Refuse or Slag Heap		Lake, Loch or Pond
	Dunes		Boulders
	Coniferous Trees		Non-Coniferous Trees
	Orchard		Scrub
	Bracken		Heath
	Marsh		Reeds
	Building		Glasshouse
	Sloping Masonry		Pylon
	Cutting		Embankment
	Road Under		Road Over
	Level Crossing		Foot Bridge
	Standard Gauge Multiple Track		Standard Gauge Single Track
	Siding, Tramway or Mineral Line		Narrow Gauge
	Geographical County		Administrative County, County Borough or County of City
	Municipal Borough, Urban or Rural District, Burgh or District Council		Borough, Burgh or County Constituency
	Civil Parish		
	BP, BS Boundary Post or Stone		Police Station
	Church		Post Office
	Club House		Public Convenience
	Fire Engine Station		Public House
	Foot Bridge		Signal Box
	Fountain		Spring
	Guide Post		Telephone Call Box
	Mile Post		Telephone Call Post
	Mile Stone		Well

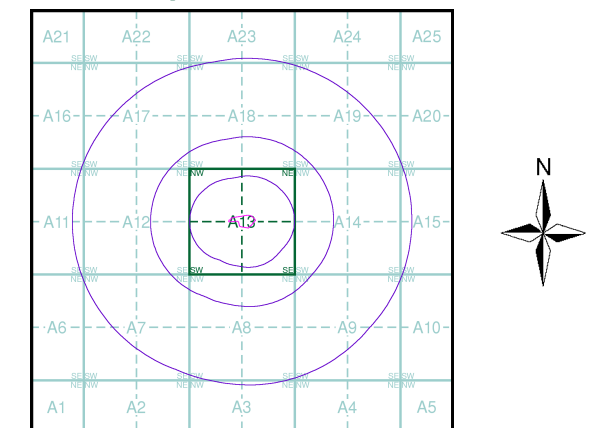
## 1:10,000 Raster Mapping

	Gravel Pit		Refuse tip or slag heap
	Rock		Rock (scattered)
	Boulders		Boulders (scattered)
	Shingle		Mud
	Sand		Sand Pit
	Slopes		Top of cliff
	General detail		Underground detail
	Overhead detail		Narrow gauge railway
	Multi-track railway		Single track railway
	County boundary (England only)		Civil, parish or community boundary
	District, Unitary, Metropolitan, London Borough boundary		Constituency boundary
	Area of wooded vegetation		Non-coniferous trees
	Non-coniferous trees (scattered)		Coniferous trees
	Coniferous trees (scattered)		Positioned tree
	Orchard		Coppice or Osiers
	Rough Grassland		Heath
	Scrub		Marsh, Salt Marsh or Reeds
	Water feature		Flow arrows
	Mean high water (springs)		Mean low water (springs)
	Telephone line (where shown)		Electricity transmission line (with poles)
	Bench mark (where shown)		Triangulation station
	Point feature (e.g. Guide Post or Mile Stone)		Pylon, flare stack or lighting tower
	Site of (antiquity)		Glasshouse
	General Building		Important Building

## Historical Mapping & Photography included:

Mapping Type	Scale	Date	Pg
Derbyshire	1:10,560	1884	2
Derbyshire	1:10,560	1900	3
Derbyshire	1:10,560	1921	4
Derbyshire	1:10,560	1921	5
Derbyshire	1:10,560	1939	6
Ordnance Survey Plan	1:10,000	1955	7
Ordnance Survey Plan	1:10,000	1966 - 1967	8
Ordnance Survey Plan	1:10,000	1972 - 1974	9
Ordnance Survey Plan	1:10,000	1982	10
Ordnance Survey Plan	1:10,000	1990 - 1993	11
10K Raster Mapping	1:10,000	2000	12
10K Raster Mapping	1:10,000	2006	13
10K Raster Mapping	1:10,000	2011	14

## Historical Map - Slice A



## Order Details

Order Number: 35239339\_1\_1  
 Customer Ref: 3240  
 National Grid Reference: 445470, 365300  
 Slice: A  
 Site Area (Ha): 0.8  
 Search Buffer (m): 1000

## Site Details

Stainsby Wetland - Site C, Stainsby, Heath, Chesterfield



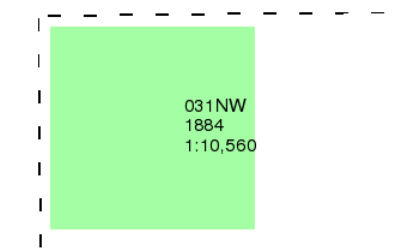
## Derbyshire

Published 1884

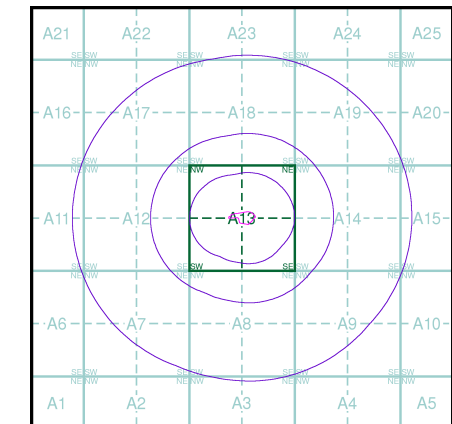
Source map scale - 1:10,560

The historical maps shown were reproduced from maps predominantly held at the scale adopted for England, Wales and Scotland in the 1840's. In 1854 the 1:2,500 scale was adopted for mapping urban areas; these maps were used to update the 1:10,560 maps. The published date given therefore is often some years later than the surveyed date. Before 1938, all OS maps were based on the Cassini Projection, with independent surveys of a single county or group of counties, giving rise to significant inaccuracies in outlying areas. In the late 1940's, a Provisional Edition was produced, which updated the 1:10,560 mapping from a number of sources. The maps appear unfinished - with all military camps and other strategic sites removed. These maps were initially overprinted with the National Grid. In 1970, the first 1:10,000 maps were produced using the Transverse Mercator Projection. The revision process continued until recently, with new editions appearing every 10 years or so for urban areas.

### Map Name(s) and Date(s)



### Historical Map - Slice A

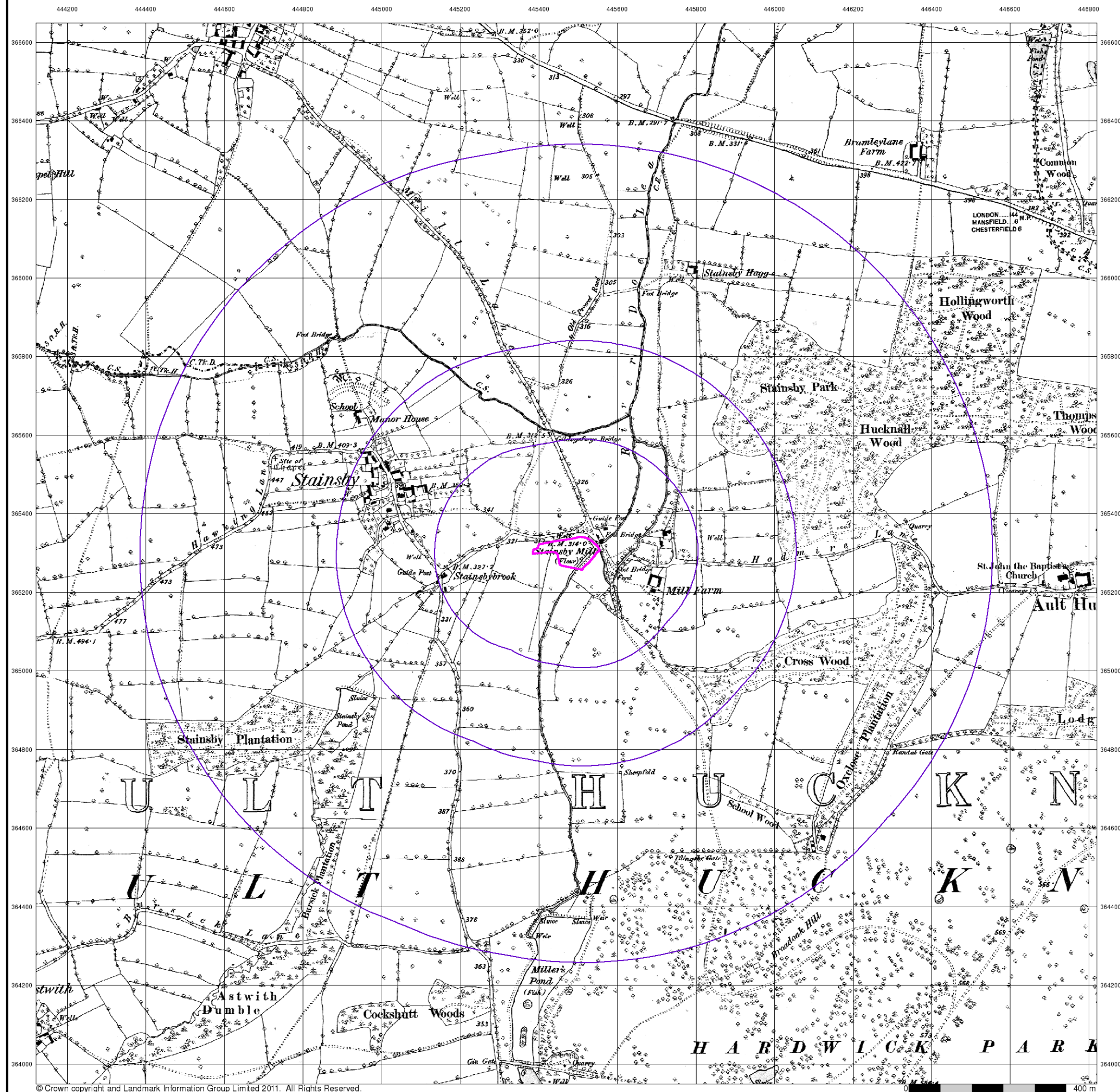


### Order Details

Order Number: 35239339\_1\_1  
Customer Ref: 3240  
National Grid Reference: 445470, 365300  
Slice: A  
Site Area (Ha): 0.8  
Search Buffer (m): 1000

### Site Details

Stainsby Wetland - Site C, Stainsby, Heath, Chesterfield





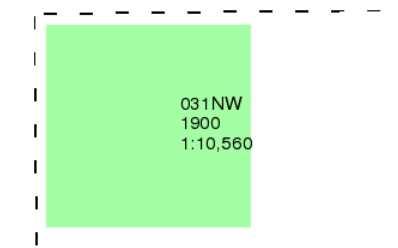
## Derbyshire

Published 1900

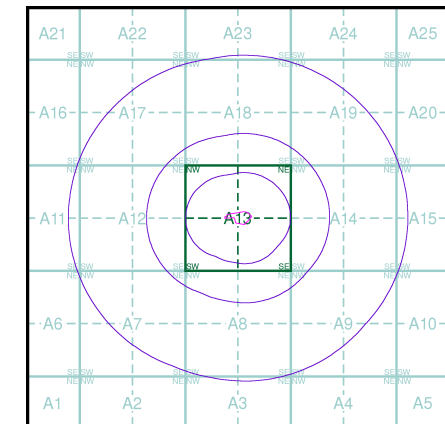
Source map scale - 1:10,560

The historical maps shown were reproduced from maps predominantly held at the scale adopted for England, Wales and Scotland in the 1840's. In 1854 the 1:2,500 scale was adopted for mapping urban areas; these maps were used to update the 1:10,560 maps. The published date given therefore is often some years later than the surveyed date. Before 1938, all OS maps were based on the Cassini Projection, with independent surveys of a single county or group of counties, giving rise to significant inaccuracies in outlying areas. In the late 1940's, a Provisional Edition was produced, which updated the 1:10,560 mapping from a number of sources. The maps appear unfinished - with all military camps and other strategic sites removed. These maps were initially overprinted with the National Grid. In 1970, the first 1:10,000 maps were produced using the Transverse Mercator Projection. The revision process continued until recently, with new editions appearing every 10 years or so for urban areas.

### Map Name(s) and Date(s)



### Historical Map - Slice A

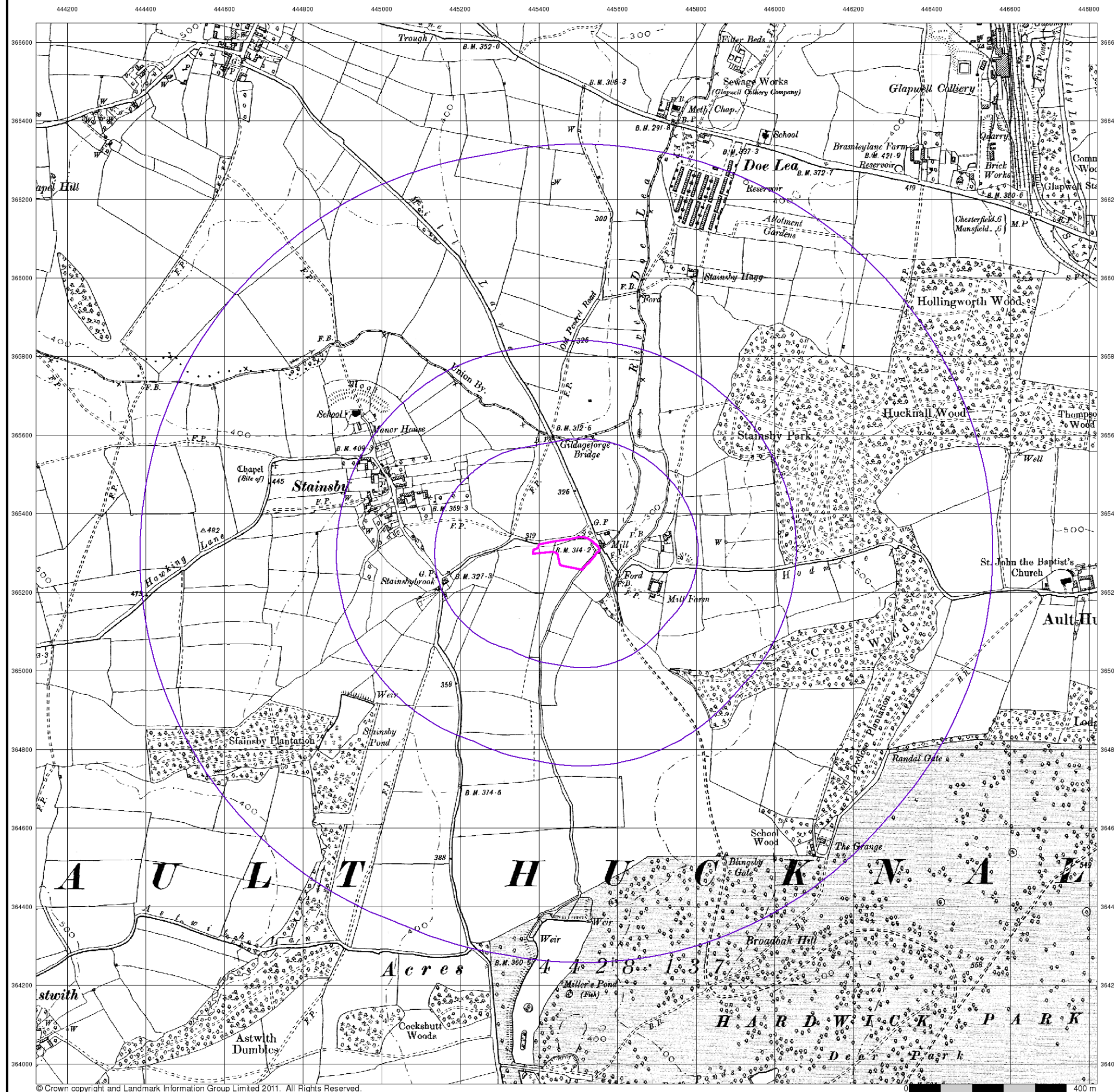


### Order Details

Order Number: 35239339\_1\_1  
Customer Ref: 3240  
National Grid Reference: 445470, 365300  
Slice: A  
Site Area (Ha): 0.8  
Search Buffer (m): 1000

### Site Details

Stainsby Wetland - Site C, Stainsby, Heath, Chesterfield





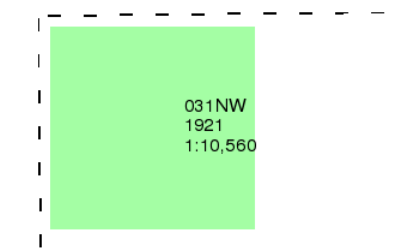
## Derbyshire

Published 1921

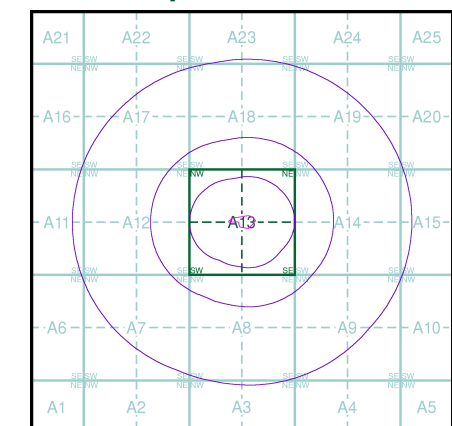
Source map scale - 1:10,560

The historical maps shown were reproduced from maps predominantly held at the scale adopted for England, Wales and Scotland in the 1840's. In 1854 the 1:2,500 scale was adopted for mapping urban areas; these maps were used to update the 1:10,560 maps. The published date given therefore is often some years later than the surveyed date. Before 1938, all OS maps were based on the Cassini Projection, with independent surveys of a single county or group of counties, giving rise to significant inaccuracies in outlying areas. In the late 1940's, a Provisional Edition was produced, which updated the 1:10,560 mapping from a number of sources. The maps appear unfinished - with all military camps and other strategic sites removed. These maps were initially overprinted with the National Grid. In 1970, the first 1:10,000 maps were produced using the Transverse Mercator Projection. The revision process continued until recently, with new editions appearing every 10 years or so for urban areas.

### Map Name(s) and Date(s)



### Historical Map - Slice A

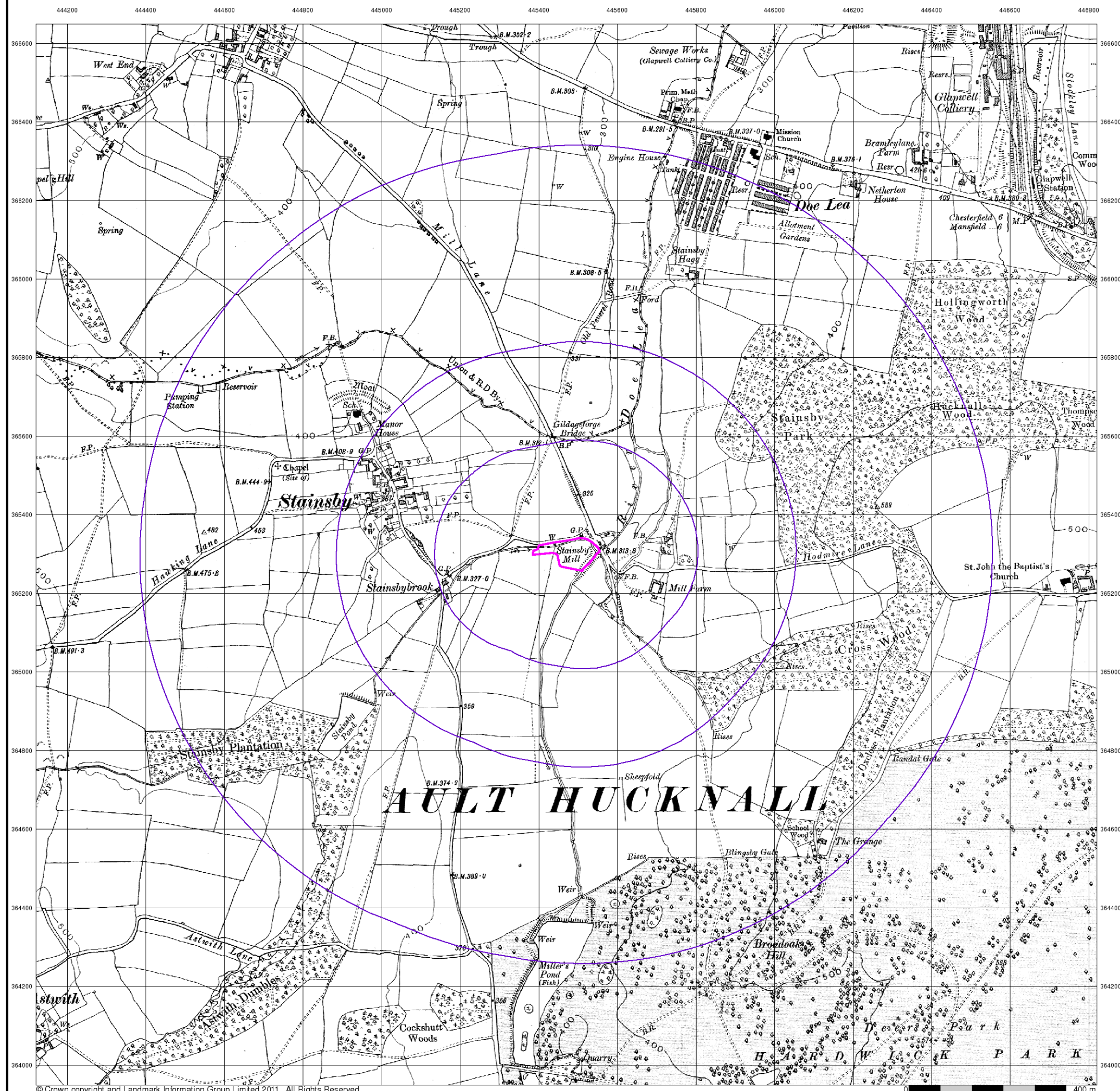


### Order Details

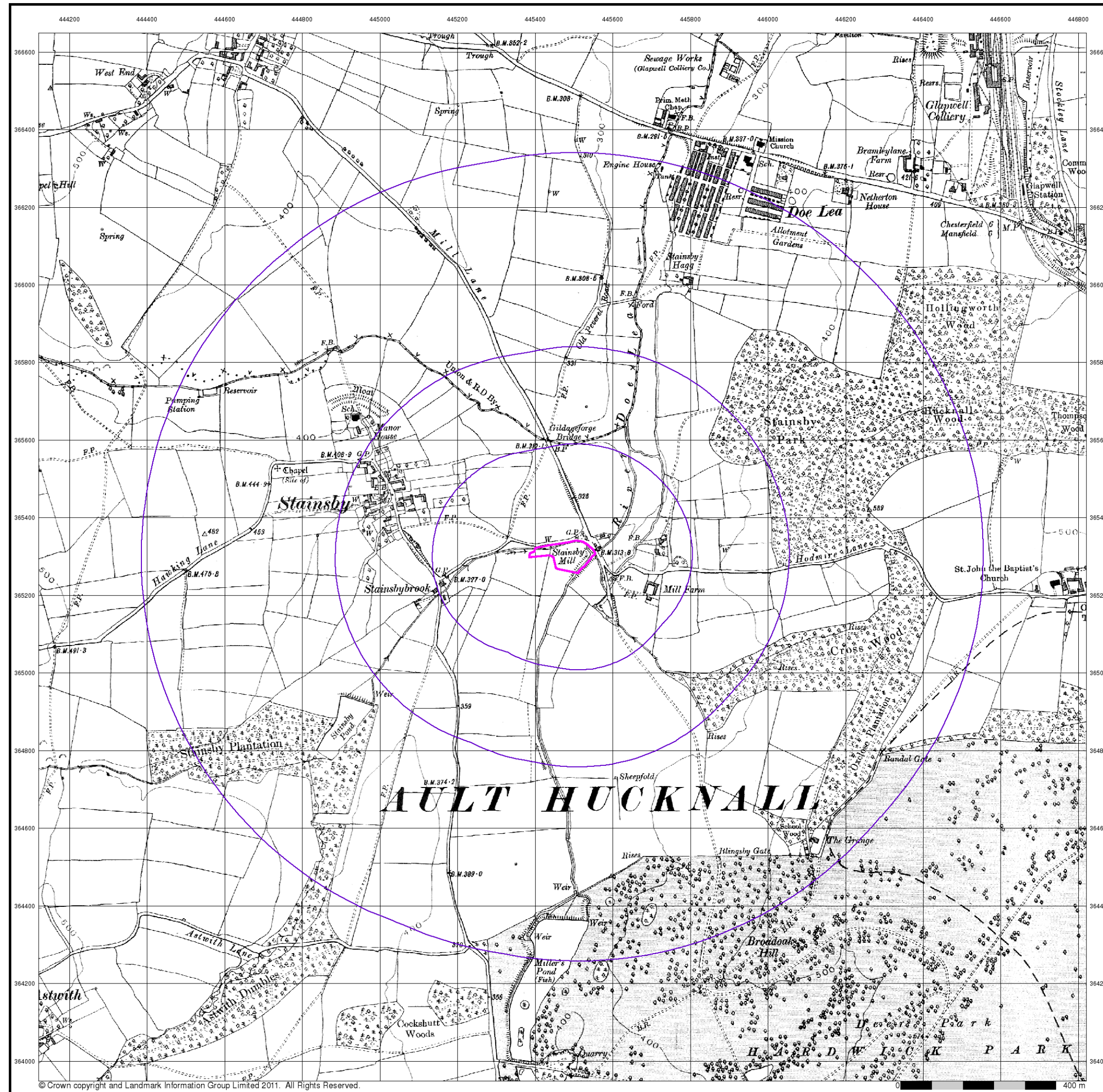
Order Number: 35239339\_1\_1  
 Customer Ref: 3240  
 National Grid Reference: 445470, 365300  
 Slice: A  
 Site Area (Ha): 0.8  
 Search Buffer (m): 1000

### Site Details

Stainsby Wetland - Site C, Stainsby, Heath, Chesterfield







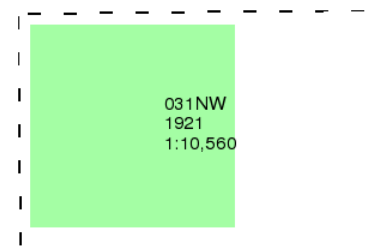
## Derbyshire

### Published 1921

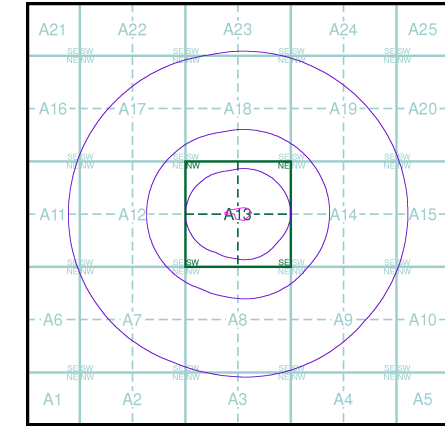
### Source map scale - 1:10,560

The historical maps shown were reproduced from maps predominantly held at the scale adopted for England, Wales and Scotland in the 1840's. In 1854 the 1:2,500 scale was adopted for mapping urban areas; these maps were used to update the 1:10,560 maps. The published date given therefore is often some years later than the surveyed date. Before 1938, all OS maps were based on the Cassini Projection, with independent surveys of a single county or group of counties, giving rise to significant inaccuracies in outlying areas. In the late 1940's, a Provisional Edition was produced, which updated the 1:10,560 mapping from a number of sources. The maps appear unfinished - with all military camps and other strategic sites removed. These maps were initially overprinted with the National Grid. In 1970, the first 1:10,000 maps were produced using the Transverse Mercator Projection. The revision process continued until recently, with new editions appearing every 10 years or so for urban areas.

### Map Name(s) and Date(s)



### Historical Map - Slice A



Order Details	
Order Number:	35239339_1_1
Customer Ref:	3240
National Grid Reference:	445470, 365300
Slice:	A
Site Area (Ha):	0.8
Search Buffer (m):	1000

### Site Details

Stainsby Wetland - Site C, Stainsby, Heath, Chesterfield





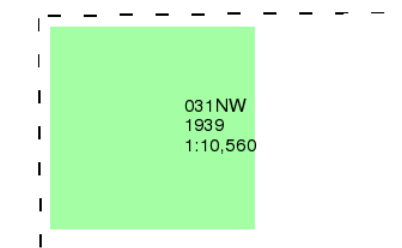
## Derbyshire

Published 1939

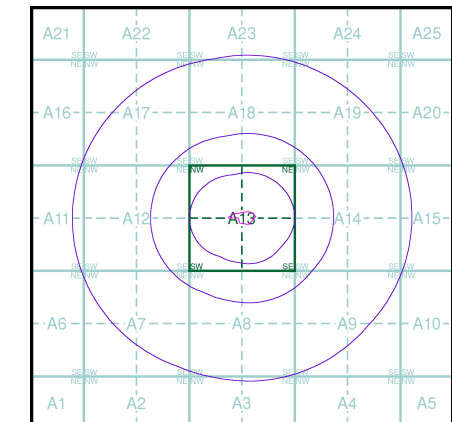
Source map scale - 1:10,560

The historical maps shown were reproduced from maps predominantly held at the scale adopted for England, Wales and Scotland in the 1840's. In 1854 the 1:2,500 scale was adopted for mapping urban areas; these maps were used to update the 1:10,560 maps. The published date given therefore is often some years later than the surveyed date. Before 1938, all OS maps were based on the Cassini Projection, with independent surveys of a single county or group of counties, giving rise to significant inaccuracies in outlying areas. In the late 1940's, a Provisional Edition was produced, which updated the 1:10,560 mapping from a number of sources. The maps appear unfinished - with all military camps and other strategic sites removed. These maps were initially overprinted with the National Grid. In 1970, the first 1:10,000 maps were produced using the Transverse Mercator Projection. The revision process continued until recently, with new editions appearing every 10 years or so for urban areas.

### Map Name(s) and Date(s)



### Historical Map - Slice A

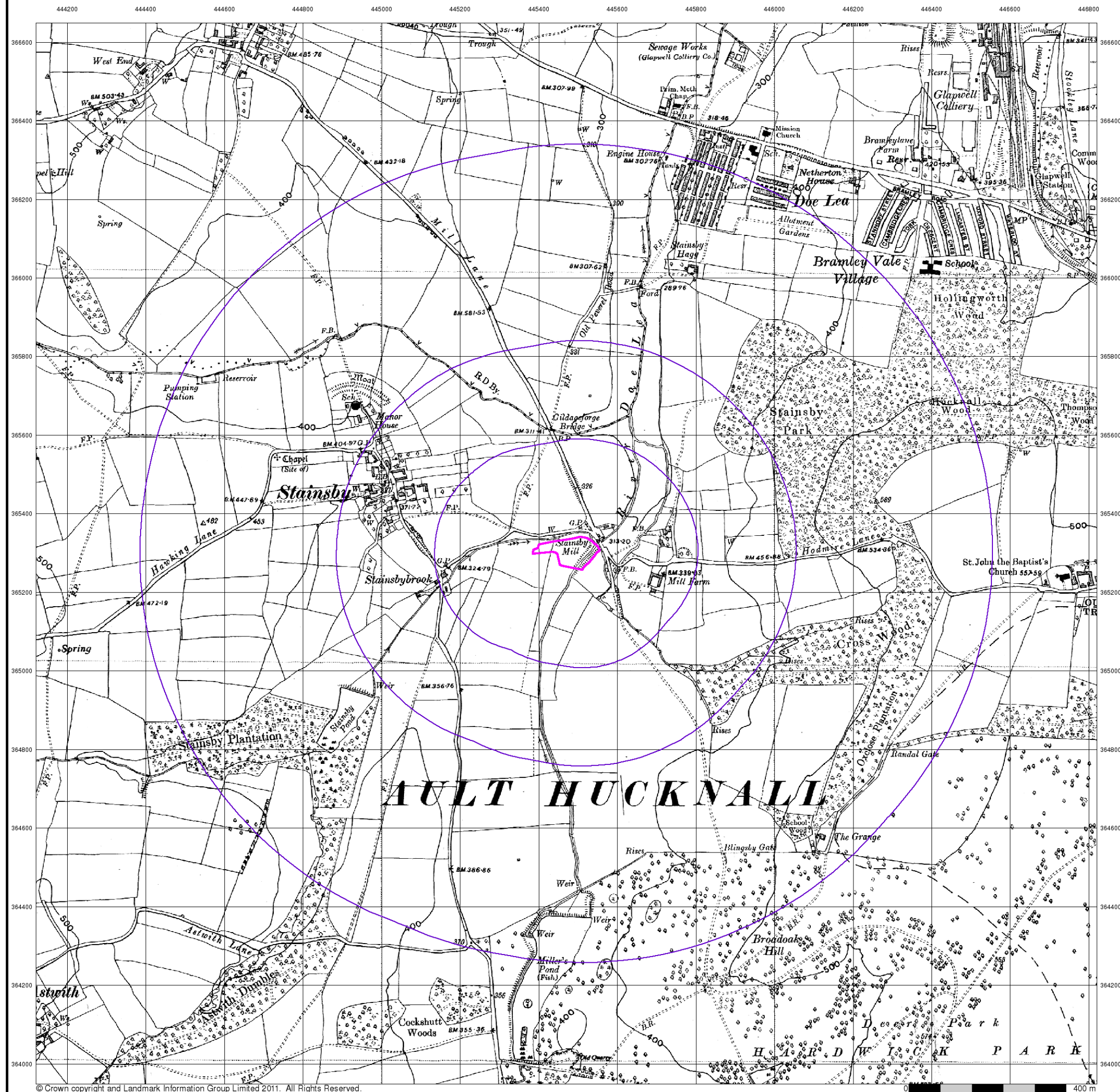


### Order Details

Order Number: 35239339\_1\_1  
Customer Ref: 3240  
National Grid Reference: 445470, 365300  
Slice: A  
Site Area (Ha): 0.8  
Search Buffer (m): 1000

### Site Details

Stainsby Wetland - Site C, Stainsby, Heath, Chesterfield





## Ordnance Survey Plan

Published 1955

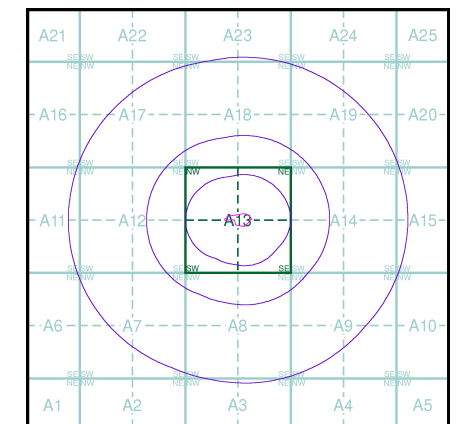
Source map scale - 1:10,000

The historical maps shown were reproduced from maps predominantly held at the scale adopted for England, Wales and Scotland in the 1840's. In 1854 the 1:2,500 scale was adopted for mapping urban areas; these maps were used to update the 1:10,560 maps. The published date given therefore is often some years later than the surveyed date. Before 1938, all OS maps were based on the Cassini Projection, with independent surveys of a single county or group of counties, giving rise to significant inaccuracies in outlying areas. In the late 1940's, a Provisional Edition was produced, which updated the 1:10,560 mapping from a number of sources. The maps appear unfinished - with all military camps and other strategic sites removed. These maps were initially overprinted with the National Grid. In 1970, the first 1:10,000 maps were produced using the Transverse Mercator Projection. The revision process continued until recently, with new editions appearing every 10 years or so for urban areas.

## Map Name(s) and Date(s)

SK46NW	SK46NE
1955	1955
1:10,560	1:10,560
SK46SW	SK46SE
1955	1955
1:10,560	1:10,560

## Historical Map - Slice A

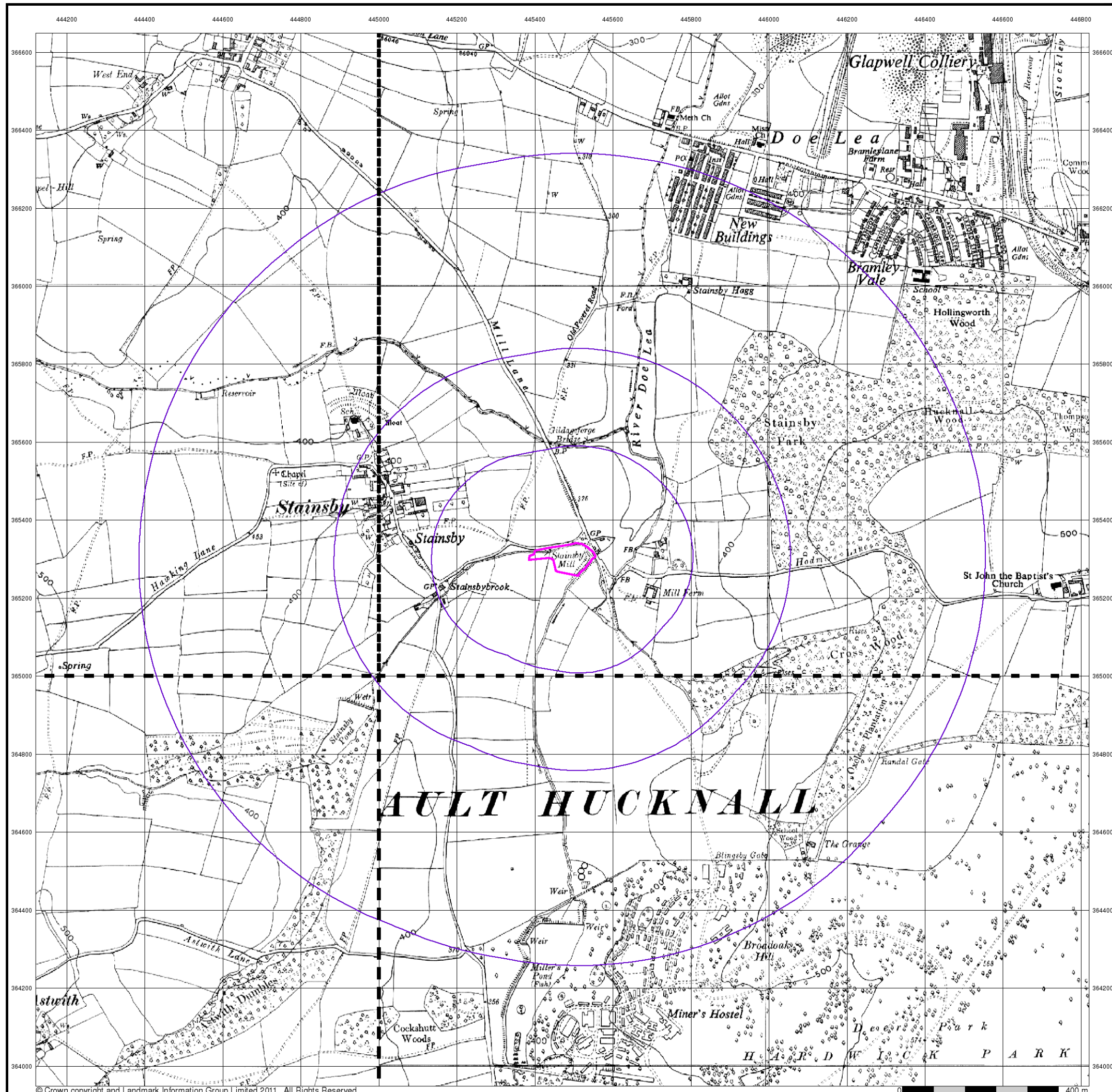


## Order Details

Order Number: 35239339\_1\_1  
 Customer Ref: 3240  
 National Grid Reference: 445470, 365300  
 Slice: A  
 Site Area (Ha): 0.8  
 Search Buffer (m): 1000

## Site Details

Stainsby Wetland - Site C, Stainsby, Heath, Chesterfield





## Ordnance Survey Plan

Published 1966 - 1967

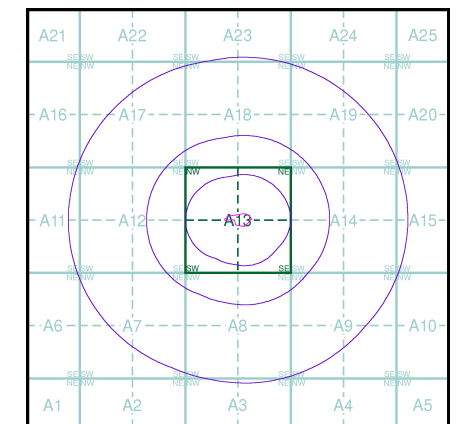
Source map scale - 1:10,000

The historical maps shown were reproduced from maps predominantly held at the scale adopted for England, Wales and Scotland in the 1840's. In 1854 the 1:2,500 scale was adopted for mapping urban areas; these maps were used to update the 1:10,560 maps. The published date given therefore is often some years later than the surveyed date. Before 1938, all OS maps were based on the Cassini Projection, with independent surveys of a single county or group of counties, giving rise to significant inaccuracies in outlying areas. In the late 1940's, a Provisional Edition was produced, which updated the 1:10,560 mapping from a number of sources. The maps appear unfinished - with all military camps and other strategic sites removed. These maps were initially overprinted with the National Grid. In 1970, the first 1:10,000 maps were produced using the Transverse Mercator Projection. The revision process continued until recently, with new editions appearing every 10 years or so for urban areas.

## Map Name(s) and Date(s)

SK46NW	SK46NE
1967	1966
1:10,560	1:10,560
SK46SW	SK46SE
1967	1966
1:10,560	1:10,560

## Historical Map - Slice A

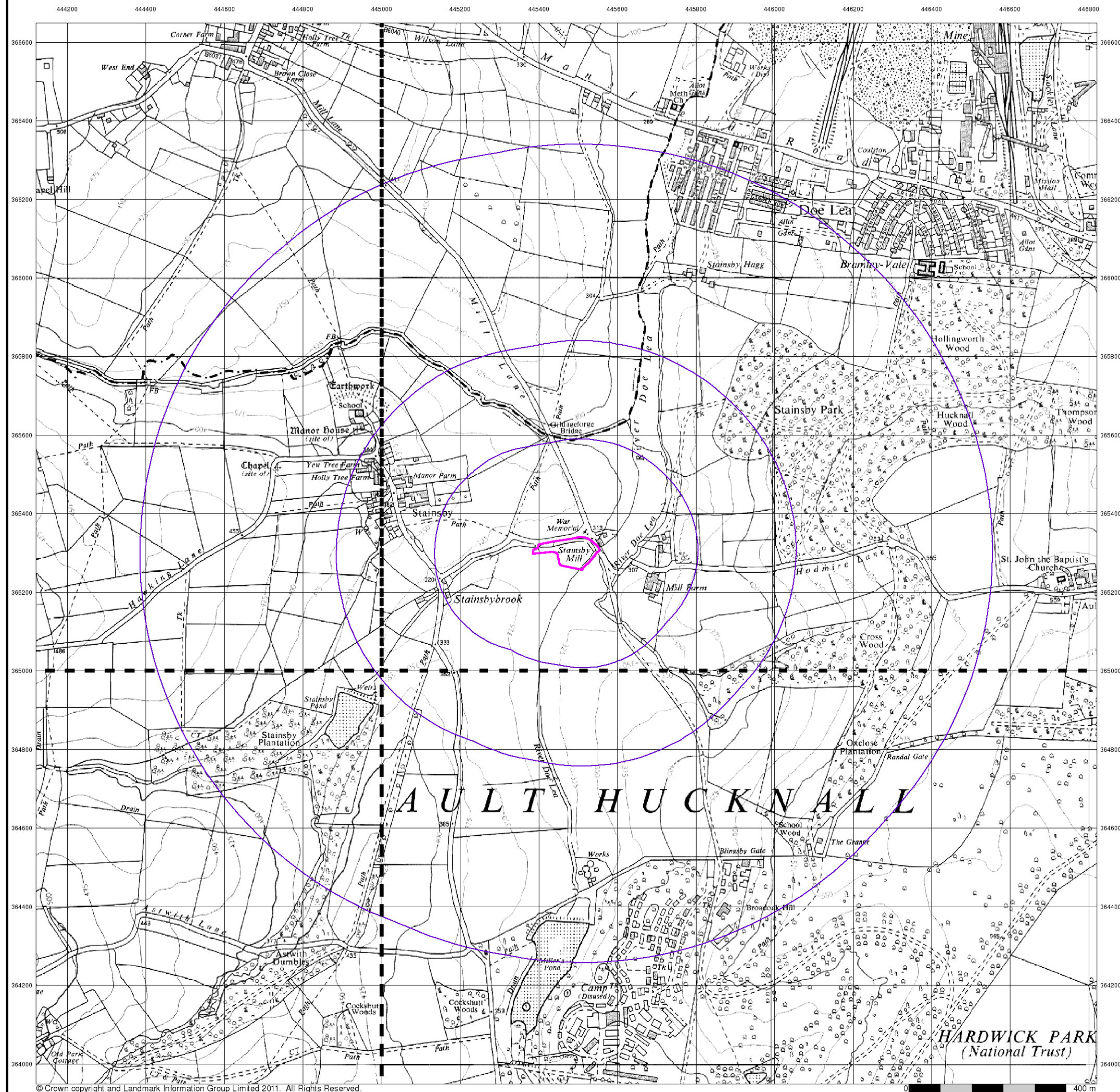


## Order Details

Order Number: 35239339\_1\_1  
 Customer Ref: 3240  
 National Grid Reference: 445470, 365300  
 Slice: A  
 Site Area (Ha): 0.8  
 Search Buffer (m): 1000

## Site Details

Stainsby Wetland - Site C, Stainsby, Heath, Chesterfield





## Ordnance Survey Plan

Published 1972 - 1974

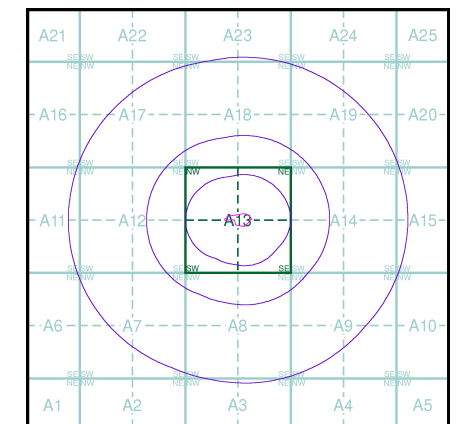
Source map scale - 1:10,000

The historical maps shown were reproduced from maps predominantly held at the scale adopted for England, Wales and Scotland in the 1840's. In 1854 the 1:2,500 scale was adopted for mapping urban areas; these maps were used to update the 1:10,560 maps. The published date given therefore is often some years later than the surveyed date. Before 1938, all OS maps were based on the Cassini Projection, with independent surveys of a single county or group of counties, giving rise to significant inaccuracies in outlying areas. In the late 1940's, a Provisional Edition was produced, which updated the 1:10,560 mapping from a number of sources. The maps appear unfinished - with all military camps and other strategic sites removed. These maps were initially overprinted with the National Grid. In 1970, the first 1:10,000 maps were produced using the Transverse Mercator Projection. The revision process continued until recently, with new editions appearing every 10 years or so for urban areas.

## Map Name(s) and Date(s)

SK46NW	SK46NE
1974	1972
1:10,000	1:10,000
	SK46SE
	1973
	1:10,000

## Historical Map - Slice A

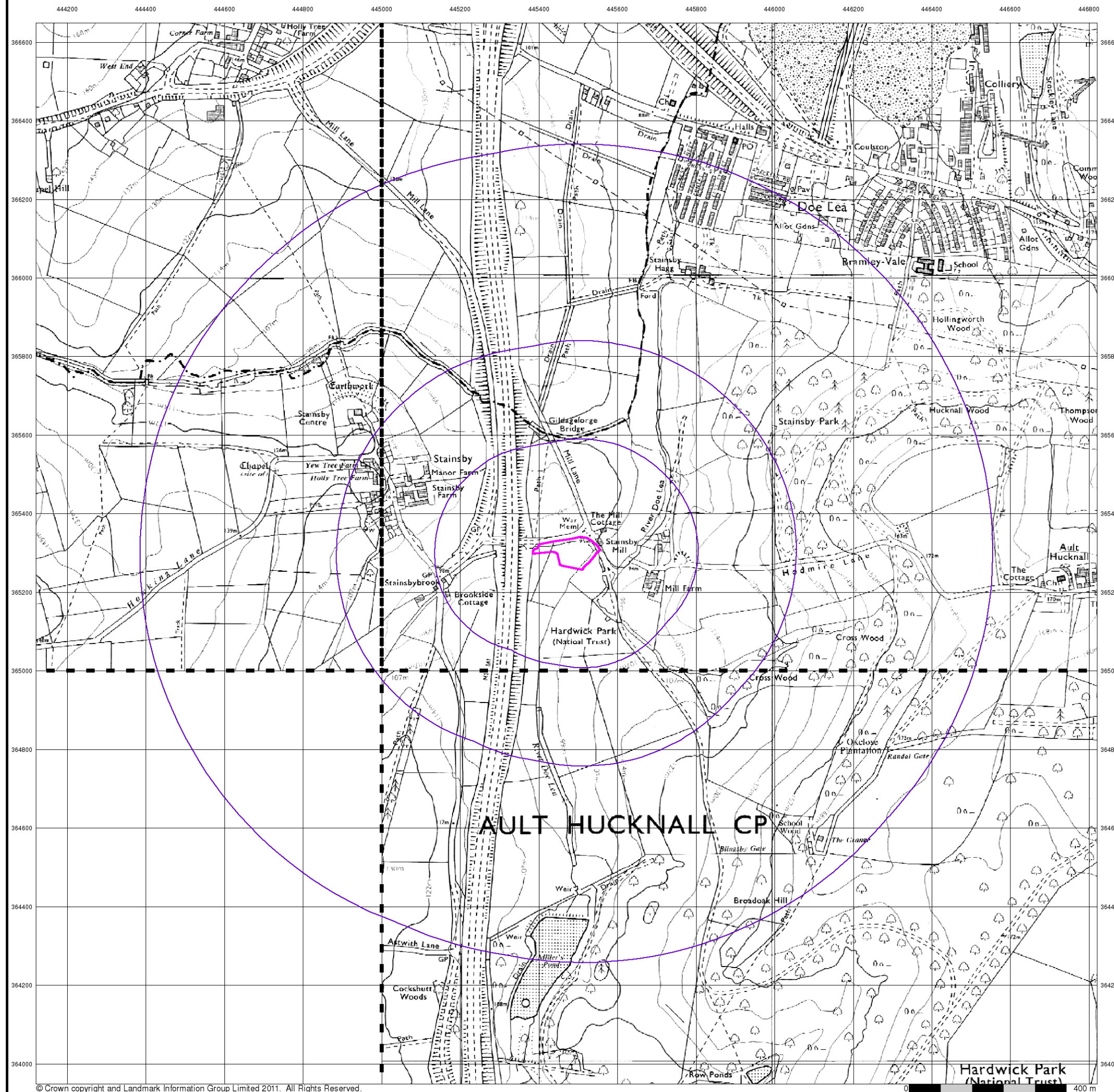


## Order Details

Order Number: 35239339\_1\_1  
 Customer Ref: 3240  
 National Grid Reference: 445470, 365300  
 Slice: A  
 Site Area (Ha): 0.8  
 Search Buffer (m): 1000

## Site Details

Stainsby Wetland - Site C, Stainsby, Heath, Chesterfield





## Ordnance Survey Plan

Published 1982

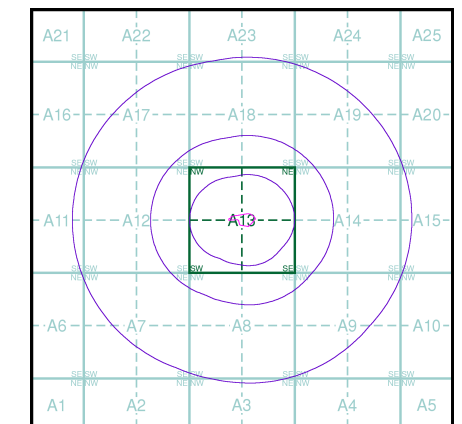
Source map scale - 1:10,000

The historical maps shown were reproduced from maps predominantly held at the scale adopted for England, Wales and Scotland in the 1840's. In 1854 the 1:2,500 scale was adopted for mapping urban areas; these maps were used to update the 1:10,560 maps. The published date given therefore is often some years later than the surveyed date. Before 1938, all OS maps were based on the Cassini Projection, with independent surveys of a single county or group of counties, giving rise to significant inaccuracies in outlying areas. In the late 1940's, a Provisional Edition was produced, which updated the 1:10,560 mapping from a number of sources. The maps appear unfinished - with all military camps and other strategic sites removed. These maps were initially overprinted with the National Grid. In 1970, the first 1:10,000 maps were produced using the Transverse Mercator Projection. The revision process continued until recently, with new editions appearing every 10 years or so for urban areas.

## Map Name(s) and Date(s)

SK46NW	1982	1:10,000
SK46SW	1982	1:10,000

## Historical Map - Slice A

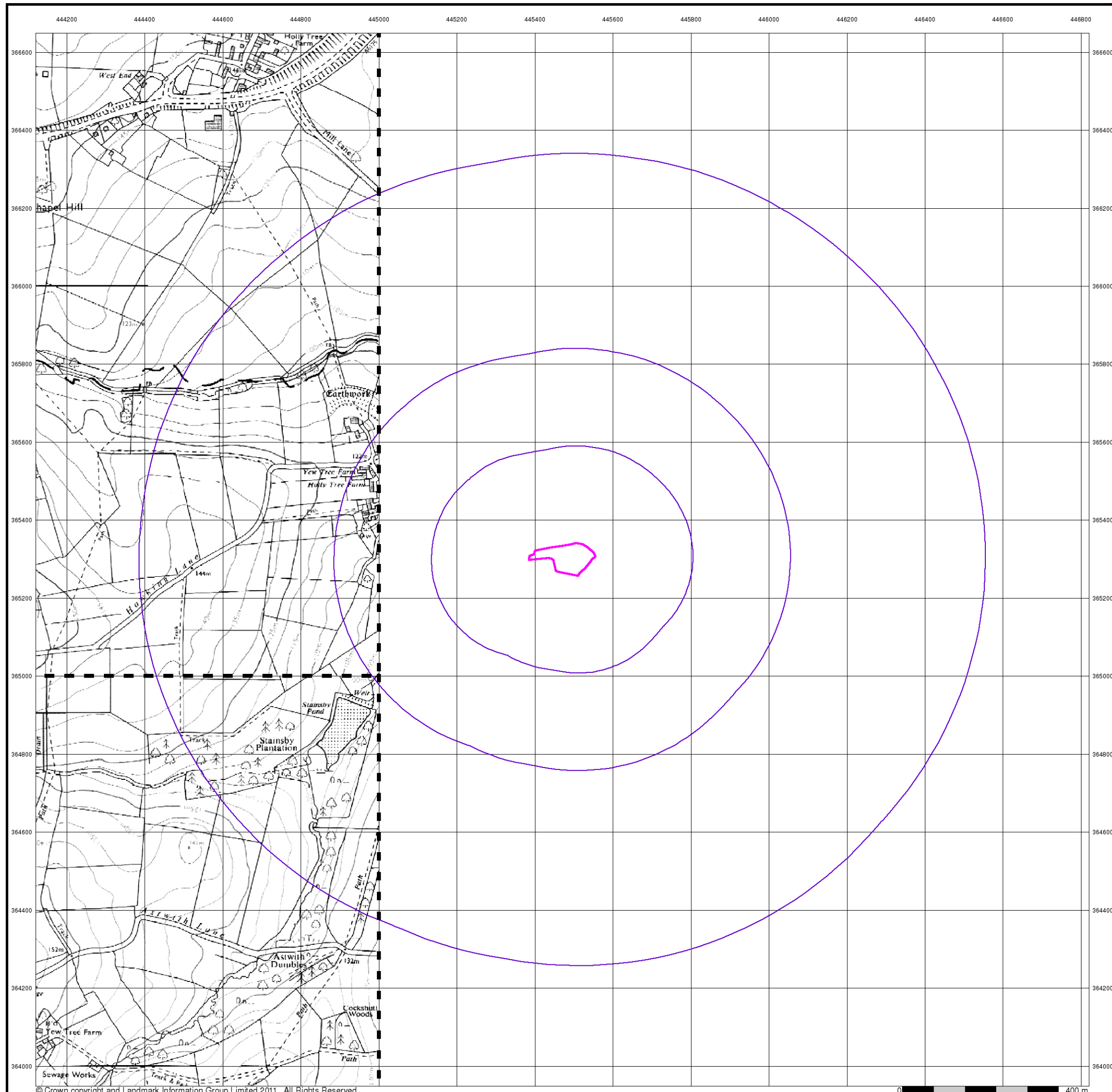


## Order Details

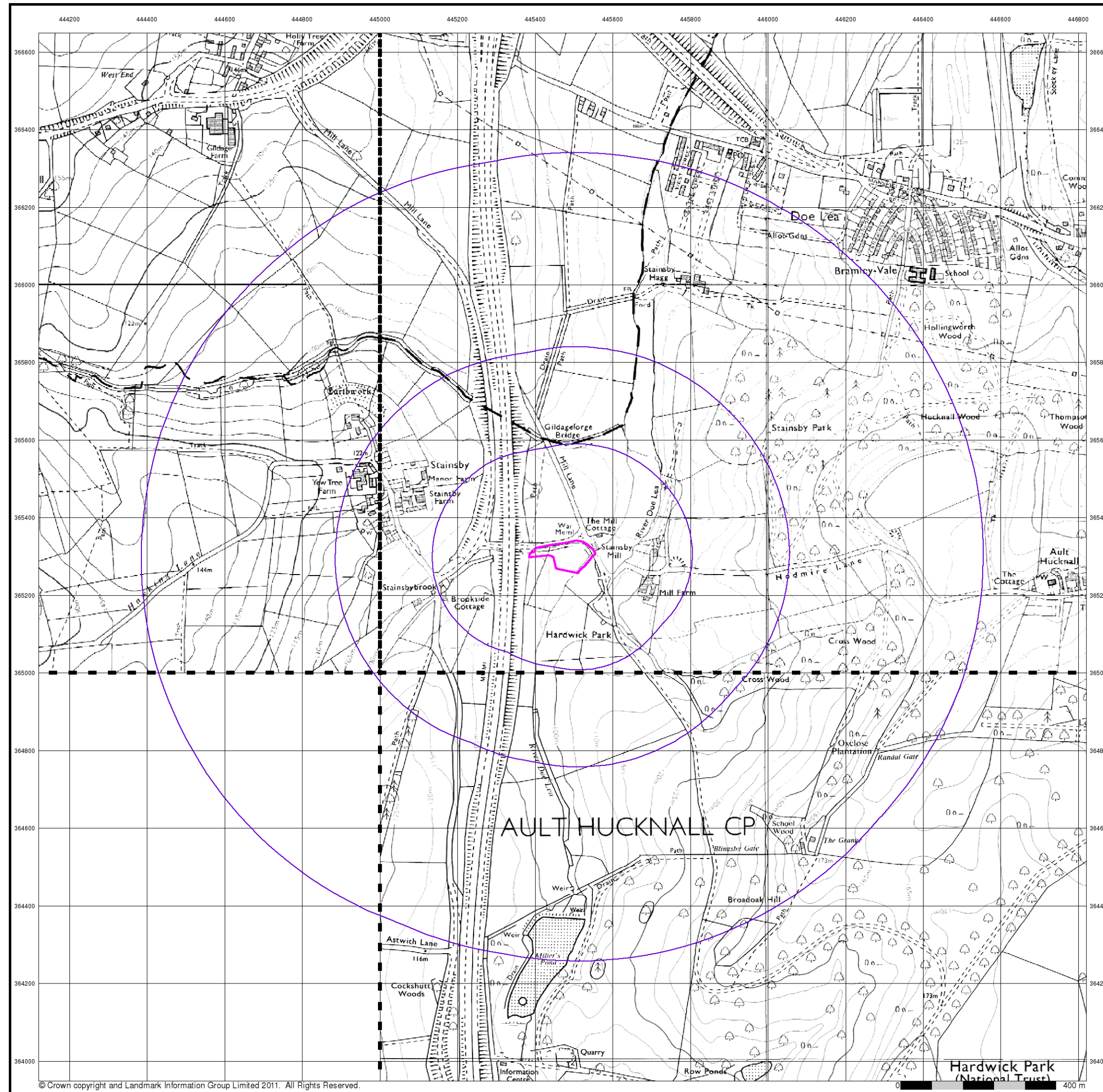
Order Number: 35239339\_1\_1  
 Customer Ref: 3240  
 National Grid Reference: 445470, 365300  
 Slice: A  
 Site Area (Ha): 0.8  
 Search Buffer (m): 1000

## Site Details

Stainsby Wetland - Site C, Stainsby, Heath, Chesterfield







© Crown copyright and Landmark Information Group Limited 2011. All Rights Reserved.



## Ordnance Survey Plan

Published 1990 - 1993

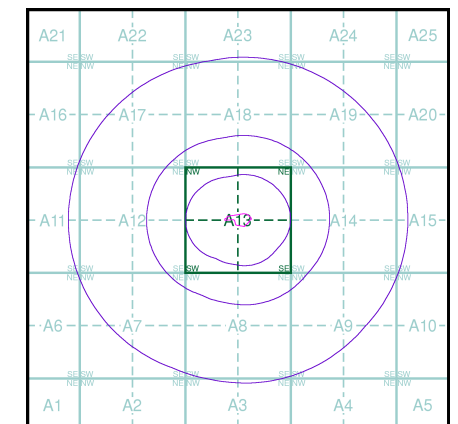
Source map scale - 1:10,000

The historical maps shown were reproduced from maps predominantly held at the scale adopted for England, Wales and Scotland in the 1840's. In 1854 the 1:2,500 scale was adopted for mapping urban areas; these maps were used to update the 1:10,560 maps. The published date given therefore is often some years later than the surveyed date. Before 1938, all OS maps were based on the Cassini Projection, with independent surveys of a single county or group of counties, giving rise to significant inaccuracies in outlying areas. In the late 1940's, a Provisional Edition was produced, which updated the 1:10,560 mapping from a number of sources. The maps appear unfinished - with all military camps and other strategic sites removed. These maps were initially overprinted with the National Grid. In 1970, the first 1:10,000 maps were produced using the Transverse Mercator Projection. The revision process continued until recently, with new editions appearing every 10 years or so for urban areas.

### Map Name(s) and Date(s)

SK46NW	SK46NE
1993	1993
1:10,000	1:10,000
	SK46SE
	1990
	1:10,000

### Historical Map - Slice A



### Order Details

Order Number: 35239339\_1\_1  
Customer Ref: 3240  
National Grid Reference: 445470, 365300  
Slice: A  
Site Area (Ha): 0.8  
Search Buffer (m): 1000

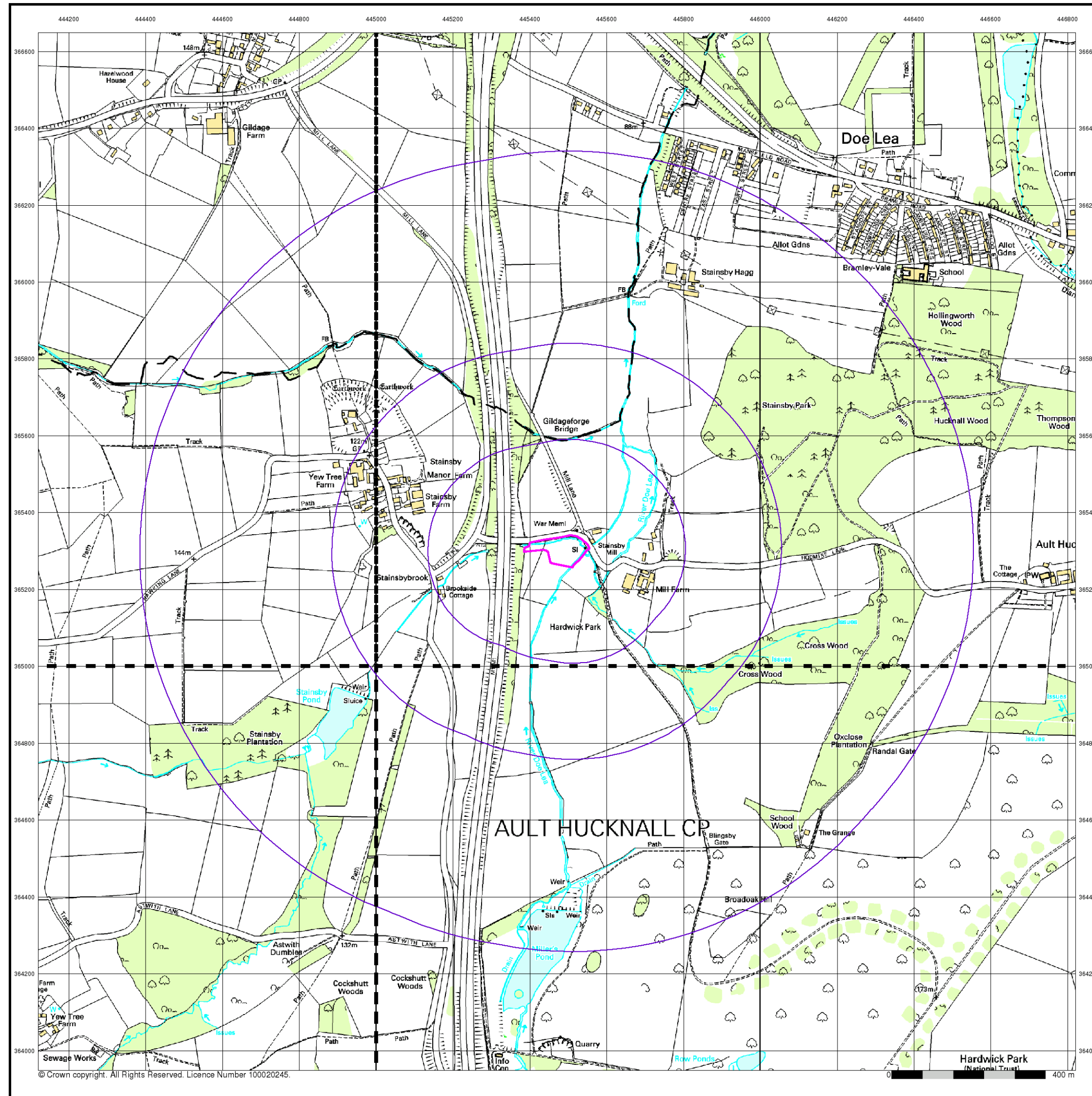
### Site Details

Stainsby Wetland - Site C, Stainsby, Heath, Chesterfield



Tel: 0844 844 9952  
Fax: 0844 844 9951  
Web: www.envirocheck.co.uk





## 10k Raster Mapping

Published 2000

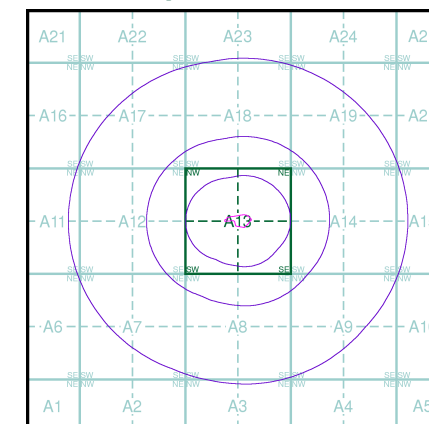
Source map scale - 1:10,000

The historical maps shown were produced from the Ordnance Survey's 1:10,000 colour raster mapping. These maps are derived from Landplan which replaced the old 1:10,000 maps originally published in 1970. The data is highly detailed showing buildings, fences and field boundaries as well as all roads, tracks and paths. Road names are also included together with the relevant road number and classification. Boundary information depiction includes county, unitary authority, district, civil parish and constituency.

### Map Name(s) and Date(s)

SK46NW	SK46NE
2000	2000
1:10,000	1:10,000
SK46SW	SK46SE
2000	2000
1:10,000	1:10,000

### Historical Map - Slice A



### Order Details

Order Number: 35239339\_1\_1  
Customer Ref: 3240  
National Grid Reference: 445470, 365300  
Slice: A  
Site Area (Ha): 0.8  
Search Buffer (m): 1000

### Site Details

Stainsby Wetland - Site C, Stainsby, Heath, Chesterfield



Tel: 0844 844 9952  
Fax: 0844 844 9951  
Web: www.envirocheck.co.uk



## 10k Raster Mapping

Published 2006

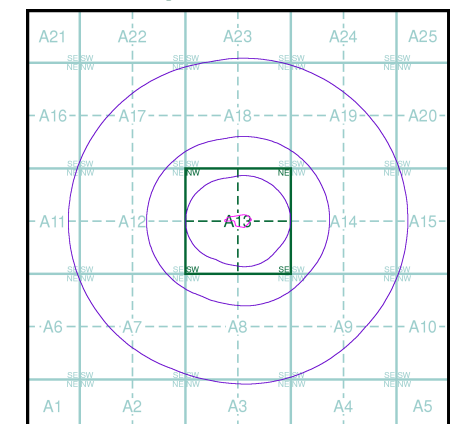
Source map scale - 1:10,000

The historical maps shown were produced from the Ordnance Survey's 1:10,000 colour raster mapping. These maps are derived from Landplan which replaced the old 1:10,000 maps originally published in 1970. The data is highly detailed showing buildings, fences and field boundaries as well as all roads, tracks and paths. Road names are also included together with the relevant road number and classification. Boundary information depiction includes county, unitary authority, district, civil parish and constituency.

### Map Name(s) and Date(s)

SK46NW	SK46NE
2006	2006
1:10,000	1:10,000
SK46SW	SK46SE
2006	2006
1:10,000	1:10,000

### Historical Map - Slice A

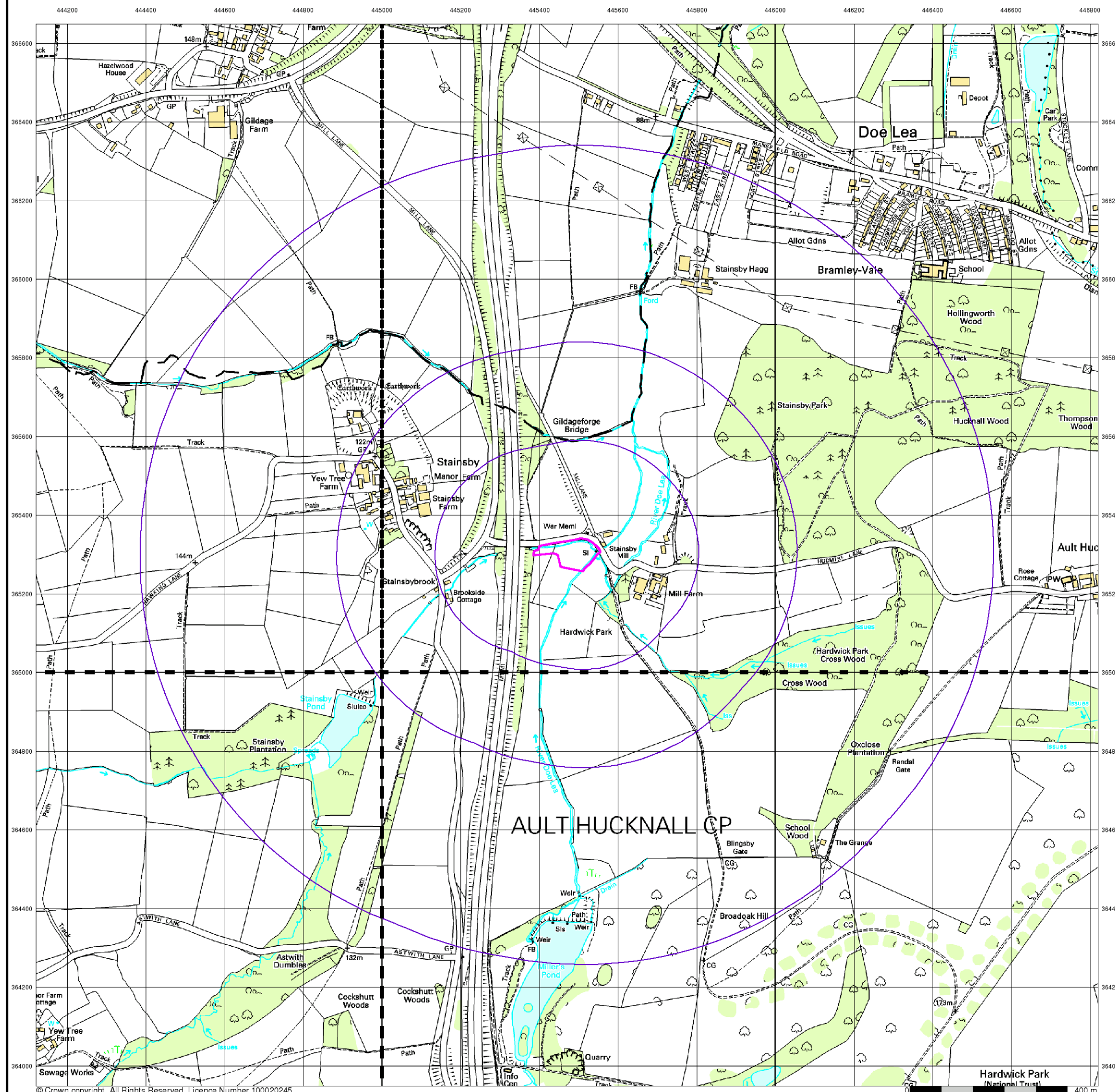


### Order Details

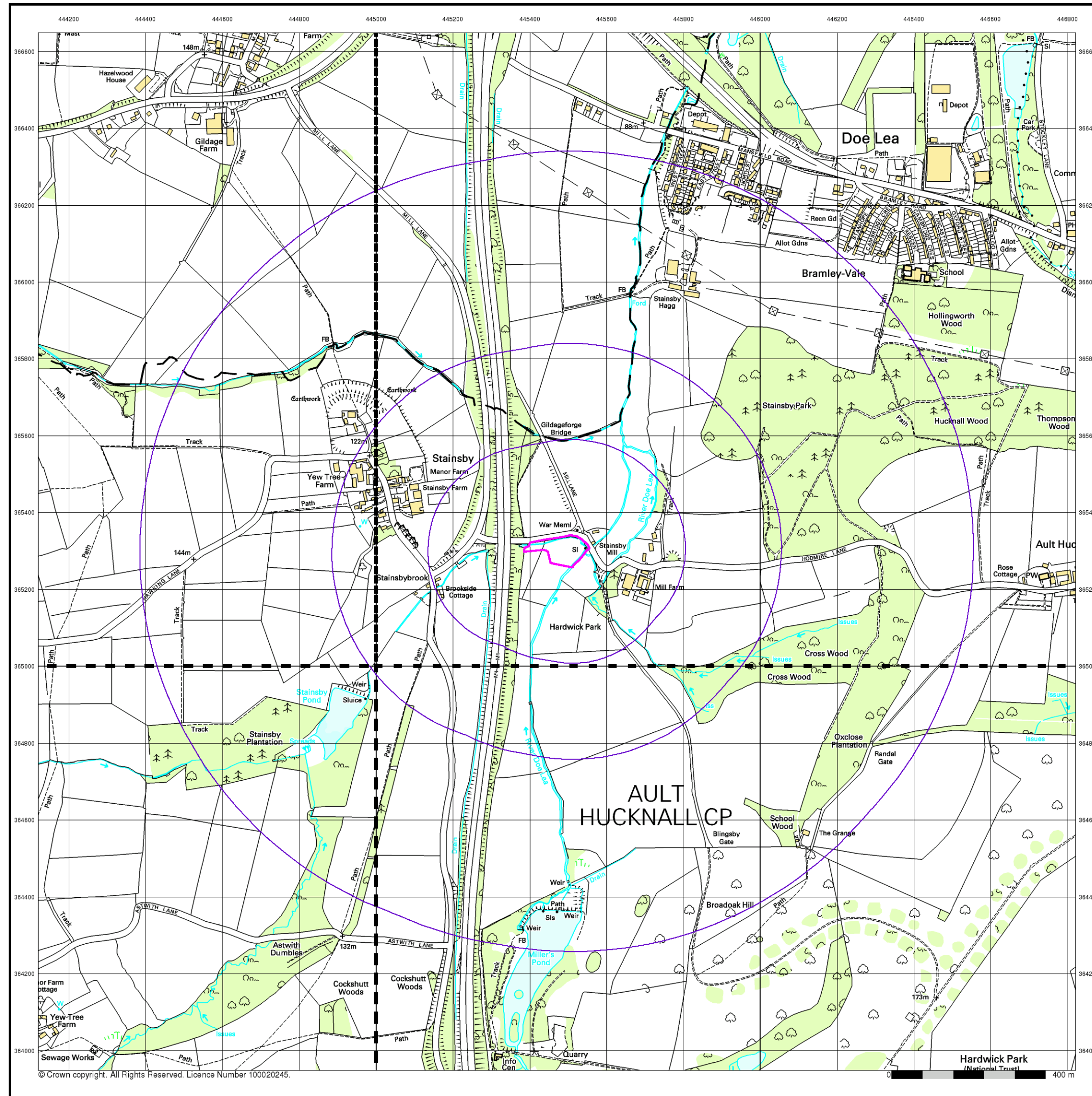
Order Number: 35239339\_1\_1  
 Customer Ref: 3240  
 National Grid Reference: 445470, 365300  
 Slice: A  
 Site Area (Ha): 0.8  
 Search Buffer (m): 1000

### Site Details

Stainsby Wetland - Site C, Stainsby, Heath, Chesterfield







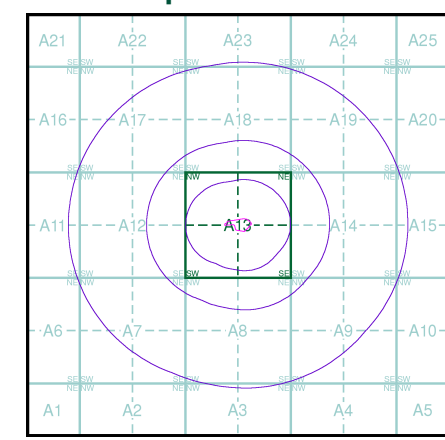
**10k Raster Mapping**  
**Published 2011**  
**Source map scale - 1:10,000**

The historical maps shown were produced from the Ordnance Survey's 1:10,000 colour raster mapping. These maps are derived from Landplan which replaced the old 1:10,000 maps originally published in 1970. The data is highly detailed showing buildings, fences and field boundaries as well as all roads, tracks and paths. Road names are also included together with the relevant road number and classification. Boundary information depiction includes county, unitary authority, district, civil parish and constituency.

**Map Name(s) and Date(s)**

SK46NW	SK46NE
2011	2011
1:10,000	1:10,000
SK46SW	SK46SE
2011	2011
1:10,000	1:10,000

**Historical Map - Slice A**



**Order Details**  
Order Number: 35239339\_1\_1  
Customer Ref: 3240  
National Grid Reference: 445470, 365300  
Slice: A  
Site Area (Ha): 0.8  
Search Buffer (m): 1000

**Site Details**  
Stainsby Wetland - Site C, Stainsby, Heath, Chesterfield

