



**Leamington Primary & Nursery School, Clare Road,  
Sutton in Ashfield, Nottinghamshire – Historic  
Building Recording**

**Bowmer & Kirkland Ltd**

*Report prepared by:*  
ECUS Ltd.  
Brook Holt  
3 Blackburn Road  
Sheffield  
S61 2DW  
0114 266 9292

**February 2016**

## ECUS Ltd

Report to: Bowmer & Kirkland Ltd

Report Title: Leamington Primary & Nursery School, Clare Road, Sutton in  
Ashfield, Nottinghamshire – Historic Building Recording

Revision: v.1  
Issue Date: 26.02.2016  
Report Ref: 7527

Originated By:



Jennifer Oliver  
Assistant Heritage Consultant Date: 26.02.2016

Reviewed By:



James Thomson  
Heritage Consultant Date: 26.02.2016

Approved By:



Paul White  
Heritage Team Leader Date: 29.02.2016

Prepared by:  
ECUS Ltd.  
Brook Holt  
3 Blackburn Road  
Sheffield  
S61 2DW  
0114 2669292

The report and the site assessments carried out by ECUS on behalf of the client in accordance with the agreed terms of contract and/or written agreement form the agreed Services. The Services were performed by ECUS with the skill and care ordinarily exercised by a reasonable Environmental Consultant at the time the Services were performed. Further, and in particular, the Services were performed by ECUS taking into account the limits of the scope of works required by the client, the time scale involved and the resources, including financial and manpower resources, agreed between ECUS and the client.

Other than that expressly contained in the paragraph above, ECUS provides no other representation or warranty whether express or implied, in relation to the services.

This report is produced exclusively for the purposes of the client. ECUS is not aware of any interest of or reliance by any party other than the client in or on the services. Unless expressly provided in writing, ECUS does not authorise, consent or condone any party other than the client relying upon the services provided. Any reliance on the services or any part of the services by any party other than the client is made wholly at that party's own and sole risk and ECUS disclaims any liability to such parties.

This report is based on site conditions, regulatory or other legal provisions, technology or economic conditions at the time of the Service provision. These conditions can change with time and reliance on the findings of the Services under changing conditions should be reviewed.

ECUS accepts no responsibility for the accuracy of third party data used in this report.

## Executive Summary

*Ecus Ltd were commissioned by Bowmer & Kirkland to undertake Historic Building Recording of the two building which form Leamington Primary & Nursery School buildings, Clare Road, Sutton in Ashfield, Nottinghamshire (hereafter 'the site'), located at National Grid Co-ordinate 449613, 357726. The building survey was completed in February 2016. A brief was agreed with the Historic Environment officer for Nottingham for a Level 1 survey enhanced with additional record photography and a descriptive report commensurate with a Level 3 survey.*

*Leamington Primary and Nursery School is located off Clare Road. Playing fields are located to the east. The school site also includes tarmacadam playgrounds and car parks, green spaces as well as a flagged yard to the south. There are two buildings within the site which house the school and nursery. Building 1 was constructed in the 1950s and sits to the south of the site, Building 2 was constructed in the 1970s with 1980 and 1990 extensions, this building is located to the north of Building 1. A modern sure start centre is located to the north of this but is not scheduled for demolition or included in the historic building survey.*

*Building 1 is a purpose built late 1950s school, which was constructed to a standard school design. The building is reflective of the developments in school design and architecture which was gradually working its way towards the prefabricated CLASP schools of the 1970s. The building retains a number of original features, including doors, radiators and sinks and toilets, although many of the original windows have been replaced with new PVC. The layout of the building has received little alteration and the intended communication through the building is still legible.*

*Building 2 is a standard CLASP school designed and constructed in 1974, with later alterations and extensions. The building retains few original features and the legibility of communication through the building has been in part lost by the later alterations the building has received.*

# Contents

<b>1. Introduction.....</b>	<b>1</b>
1.1 Project Background .....	1
1.2 Site Location.....	1
<b>2. Methodology .....</b>	<b>2</b>
2.1 Aims 2	
2.2 Standards .....	2
2.3 Methodology.....	2
<b>3. Building Description.....</b>	<b>3</b>
3.1 Building 1.....	3
<i>Exterior</i> 3	
<i>Interior</i> 4	
3.2 Building 2.....	5
<b>4. Discussion .....</b>	<b>6</b>
4.1 Building 1.....	6
4.2 Building 2.....	6
<b>5. Archive 6</b>	
5.1 Location and Deposition .....	6
5.2 OASIS 6	
<b>6. References .....</b>	<b>7</b>
<b>Plates .....</b>	<b>8</b>
<b>Figures .....</b>	<b>29</b>
<b>Appendix 1: Photo Registers.....</b>	<b>30</b>
<b>Appendix 2: Agreed Historic Building Recording Brief.....</b>	<b>32</b>
<b>Appendix 3: OASIS Form.....</b>	<b>33</b>

## Plates

Plate 1:	View of main entrance to Building 1 (Film 1.7) .....	8
Plate 2:	General view of west elevation, including view of the Children’s entrance to the former cloakrooms (Film 1.6) .....	8
Plate 3:	General view of south facing elevation and concrete flagged terrace (Film 1.5) ...	9
Plate 4:	General view of south facing elevation and concrete flagged terrace (Film 1.5) ...	9
Plate 5:	Detail of original school boundary fence (Digital) .....	10
Plate 6:	General view of east side of the building and tarmac playground (Film 1.2) .....	11
Plate 7:	Detail of assembly hall windows, chimney and kitchen block (Film 1.3) .....	11
Plate 8:	General view of assembly hall, kitchen block, chimney, boiler room and coal store (Film 1.1).....	12
Plate 9:	12	
Plate 10:	General view of the assembly hall, Room G6 (Film 1.34).....	13
Plate 11:	General view of the kitchen Room G7 (Film 1.29).....	13
Plate 12:	General view of the welded lateral truss in room G7 (Film 1.28) .....	14
Plate 13:	General view of offices, off of corridor room G10 (Film 1:17) .....	14
Plate 14:	Detail of original switch room and equipment (Film 1.18) .....	15
Plate 15:	General view along corridor, Room G16 (Film 1:27) .....	16
Plate 16:	General view of library, formerly a cloakroom (Film 1.26).....	16
Plate 17:	Detail of original coat hook bench (Film 1.23) .....	17
Plate 18:	Original Staff Room door plate (Film 1.25) .....	17
Plate 19:	General view of classroom space (Film 1.24).....	18
Plate 20:	Detail of original classroom door, note handle, classroom number and name card slot (Film 1.21) .....	19
Plate 21:	Detail of original sinks for the children (Film 1. 20).....	20
Plate 22:	Detail of original toilets and stalls (Film 1.22) .....	21
Plate 23:	Detail of original radiator (Film 1.19) .....	22
Plate 24:	General view of boiler room, evidence of rebuilding and slots for the former coal worm drives (Film 1.12).....	22
Plate 25:	General view of coal store. The three wooden hatch doors are situated above a change in the brick work which possibly indicates later rebuilding (Film 1.13).....	23
Plate 26:	General view of room F1 (Film 1.30).....	24
Plate 27:	Detail of original staircase and hand rail (Film 1. 32).....	25
Plate 28:	General view of Building 2, original 1974 element (Film 1.9).....	26
Plate 29:	General view of Building 2, including the later 1980s and 1990s extension (Film 1.8) .....	26
Plate 30:	General view of open plan classroom in original Building 2 (Film 1.15).....	27
Plate 31:	General view of open plan classroom in the 1980s extension of Building 2, note use of screens (Film 1.14).....	27
Plate 32:	General view of the staffroom in Building 2 (Film 1.16) .....	28

## Figures

Figure 1:	Site Location
Figure 2:	Sketch Plan of Building 1
Figure 3:	Sketch Plan of Building 2

### **Abbreviations and Conventions used in the text**

ADS	Archaeological Data Service
c.	circa
HE	Historic England
ha	hectares
HER	Historic Environment Record
km	kilometres
m	metres
NHLE	National Heritage List for England
NPPF	National Planning Policy Framework
OS	Ordnance Survey
OASIS	Online Access to the Index of archaeological investigations

### **Assumptions and Limitations**

This report is compiled using secondary information derived from a variety of sources, only some have been directly examined. The assumption is made that this data, as well as that derived from other secondary sources, is reasonably accurate.

# 1. Introduction

## 1.1 Project Background

- 1.1.1 Ecus Ltd were commissioned by Bowmer & Kirkland to undertake Historic Building Recording of the two building which form Leamington Primary & Nursery School buildings, Clare Road, Sutton in Ashfield, Nottinghamshire (hereafter ‘the site’), located at National Grid Co-ordinate 449613, 357726. The building survey was completed in February 2016.
- 1.1.2 Planning permission for the replacement of the current primary school building with a two-storey building was granted in June 2015 (Planning Application Reference 4/V/2015/0130). Condition 21 outlined the requirement for a programme of historic building recording.

### Condition 21

*“Prior to the commencement of any works of demolition of the principal school buildings, a programme of historic building recording in accordance English Heritage (Level 1) guidance shall be agreed with the CPA. The recording shall take place in accordance with the approved details. No works of demolition, unless otherwise first agreed in writing by the CPA shall commence before the building record has been approved as being satisfactory by the CPA. A copy of the completed building recording and any supporting report shall be submitted to the CPA within a timescale that shall be agreed before works of demolition commence.*

*Reason: To ensure that the school buildings are recorded to an appropriate level.”*

- 1.1.3 A brief was agreed with the Historic Environment officer for Nottingham for a Level 1 survey enhanced with additional record photography and a descriptive report commensurate with a Level 3 survey (**Appendix 2**).

## 1.2 Site Location

- 1.2.1 Leamington Primary and Nursery School is located off Clare Road. Playing fields are located to the east. The school site also includes tarmacadam playgrounds and car parks, green spaces as well as a flagged yard to the south. There are two buildings within the site which house the school and nursery. Building 1 was constructed in the 1950s and sits to the south of the site, Building 2 was constructed in the 1970s with 1980 and 1990 extensions, this building is located to the north of Building 1. A modern sure start centre is located to the north of this but is not scheduled for demolition or included in the historic building survey.

## 2. Methodology

### 2.1 Aims

2.1.1 The aims of the historic building recording programme were:

- To record the form, character and architectural details of Buildings 1 and 2 as existing;
- To identify and record any evidence of structural features, fixtures or fittings of historic significance;
- To describe the building with interpretation of phases or development and function; and
- To prepare a comprehensive indexed and cross referenced archive from the fieldwork record.

### 2.2 Standards

2.2.1 The building recording was undertaken in accordance with the Chartered Institute for Archaeologists *Standard and guidance for the archaeological investigation and recording of standing buildings or structures* (CIfA, 2014), and Historic England's *Understanding Historic Buildings – a guide to good recording practice* (2006).

### 2.3 Methodology

2.3.1 An analytical record was undertaken in line with Historic England's guide to good recording practice (2006) comprising a Level 1 survey enhanced with additional record photography and a descriptive report commensurate with a Level 3 written record.

2.3.2 A sketch plan of the buildings was produced and drawn up in CAD with the final drawings reproduced as **Figures 2 & 3** in this report, comprising a floor plan of the two buildings.

2.3.3 A photographic record of the site was undertaken, comprising both detail and general viewpoints using a 35 mm SLR camera using Ilford HP5 (ISO 400) black and white film. This record is complemented by digital photography with a 20.4 megapixel camera. Graduated photo scales were positioned within the photos where practical, and the location and subject of each viewpoint was recorded. A selection of the photographic record is reproduced in this report as **Plates 1 – 32** and their location and direction illustrated on **Figures 2 & 3**.



## 3. Building Description

### 3.1 Building 1

3.1.1 Building 1 is a predominately single phase, single-storey building, with an irregular footprint and flat roof. The building is constructed in brown brick and concrete. Principal rooms include offices, classrooms, an assembly hall, cloakrooms, a kitchen, heating chamber, and corridors.

#### Exterior

3.1.2 The exterior of the building is subdivided into several key components (See **Figure 2**).

3.1.3 The principal entrance is the visitor's entrance and reception (**Plate 1**). Access to the building for this group is through the first bay of the west facing elevation. Three sets of double PVC doors with fan lights above are located across the centre of this elevation; these are flanked by two square lights, each with a concrete lintel, sill and jambs. Originally these doors would have been oak panelled double doors, and the scar corresponding to their original location is evident behind that of the present doors. Across the top of the double doors is a cantilevered concrete awning, above which sits a row of five lights. The first and last of which comprise two panes of glass the middle three of which comprise four panes of glass. All are set into a recess with a narrow concrete frame. A set of three steps lead up to the entrance with a later ramp and hand rails.

3.1.4 To the south of this entrance a single-storey wing of the building projects westwards. This originally formed offices and is now used as reception and meeting rooms. A single doorway, again replaced with a modern PVC door, is located at its western end of this projection. Either side of this wing is lit by a row of rectangular windows all of which have been replaced with modern PVC frames, each window has a concrete lintel and sill. On the south facing elevation the inclusion of smaller windows indicates the former location of staff toilets which were provided for those with offices situated off this corridor (**Plate 2**).

3.1.5 Immediately to the south of this wing is the children's entrance (**Plate 2**). Three PVC double doors are evenly spaced across the west facing elevation. Either side of these doors is a rectangular window, comprising three panes of glass. The first two windows have been replaced in PVC, but the remainder retain their original steel frames. Each of the windows has a concrete sill. Above the doors and windows the building is rendered and painted cream, originally an awning would have projected over the entrances to provide some shelter when accessing the building.

3.1.6 The southern range of the school is staggered comprising two pitched roof wings of 9 and 19 bays, respectively, defined along the south elevation by thin tapering concrete piers which support a short projecting concrete canopy (**Plates 3 & 4**). The concrete detailing makes use of strong architectural lines to establish a regular rhythm to the façade (**Plate 3**). Each set of three bays comprises a central steel frame double doorway flanked by rectangular steel frame windows comprising eight panes (4 x 2) of glass (**Plates 3 & 4**). Above the canopy across both wings is a set of clerestory windows comprising four (4 x 1) panes of glass. Two rows of red brick mark the base of the building. This elevation faces out onto a rectangular, square concrete flagged terrace with brown brick raised planters at either end (**Plate 3**). These features are likely to be part of the original landscape design. A modern security fence sits to the east of this terrace but beyond this is the original school fence (**Plate 5**).

- 3.1.7 To the rear of the building is a large tarmac playground which is enclosed by the north and south wings of the building (**Plate 6**). To the east is the school playing field. The elevations which surround this playground follow the architectural conventions established by the remainder of the building. The elevations are well fenestrated, with windows spaced at regular intervals and often set at a height and scale which is representative of the original purpose of the room situated beyond. The south facing elevation of the northern wing contains three large, two-storey height steel frame windows separated by brown brick piers, which light the assembly hall beyond (**Plate 7**). These windows are recessed into the elevation and are framed by a concrete lintel and jamb. To the east of this is the smaller window and door of the school kitchen, with a simple concrete lintel and sill.
- 3.1.8 Beyond the kitchen and adjacent to the assembly hall is a brown brick, three storey-height chimney, immediately east of which is a half storey height boiler room and coal store (**Plates 7 & 8**). Only the coal store shows some evidence of having been raised or rebuilt (**Plate 8**).

### Interior

- 3.1.9 The principal entrance to the building for visitors to the school is located in the northern end of the building (**Plate 1**). The three PVC doors lead into a small atrium (Room G1) and align with three oak framed glazed panel doors in the opposite wall (**Plate 9**). Beyond this is reception area with a suspended ceiling and polished wooden floor (Room G4). Originally a further set of three double doors would have provided access to the Assembly Hall (Room G6), of which the central doorway has been blocked. This layout would have enabled a visitor to the school to directly access the hall without entering the remainder of the school. The three doors at each access point means that should a large number of people be in attendance, for example at a community meeting or school parent assembly it would be possible to avoid overcrowding of the entrance and exits.
- 3.1.10 The assembly hall (room G6, **Plate 10**) is rectangular in plan and well lit by the steel framed full height windows in its northern and southern walls. The original low, cast iron radiators sit below the sills of these windows. The assembly room retains its original parquet floor. Two single doors sit within the eastern wall. These doors lead to the kitchen (room G7) and an inserted serving hatch has been positioned in between. Previously the kitchen would have only occupied the southern room. The northern room was used for storage until the kitchen was extended to accommodate the growing school population. The location of the kitchen at the eastern end of the hall enabled the assembly room to be multi-purpose in function, operating as both an assembly hall and a dining room. The kitchen itself is a small functional room (**Plate 11**) with a linoleum lined floor and a simple welded steel beam supporting the roof (**Plate 12**).
- 3.1.11 To the south of the main entrance and reception of a row of offices (Rooms G11-G14 & G16, **Plate 13**). These rooms are located off a minor corridor (room G10). A single doorway provides access to this corridor from the car park and would have been primarily designed for use by staff using these offices. Historically the Headteacher's and Deputy Headteacher's office (rooms G11a and G12a) would have included their own private toilet (rooms G11b and G12b). Rooms G14 and rooms G16 would have housed public facing offices due to their proximity to the entrance and the additional space afforded by the corridor in this location (see **Figure 2**).

- 3.1.12 Room G15 also located off this corridor (room G10) is the original switch room for the building and retains the original electrical system which was fitted by Bernard Meggitt Ltd of 6 Woodhouse Road, Mansfield (**Plate 14**).
- 3.1.13 To the south of this administration corridor is a long corridor aligned from north to south (room G16, **Plate 15**). To the west of this corridor are three rooms which have been converted to classrooms and a library (rooms G18-G20, **Plate 16**). Originally these three rooms would have acted as cloakrooms for the children, each with their own entrance from the west of the building and positioned across the corridor from doorways leading to the playground to the east of the building. A number of the original coat hook benches from these cloakrooms can be seen around the school (**Plate 17**). Opposite the cloakrooms is the staff room, with the original staff room name plate (room 22, **Plate 18**) positioned with a window which overlooks the playground to the east. To the north of the staff room are the staff toilets (room G21) and to the south is the janitors store room (room 23).
- 3.1.14 Towards the southern end of this corridor are a further two corridors both aligned east to west (rooms G24 & G29). Along the southern side of these corridors are the main classrooms (**Plate 19**, rooms 25-27 & 33-38). The majority of these rooms have built in cupboards, an inserted suspended ceiling and carpet tiled floor. A number retain their original doors, which have three glazed panels and a number of brass door fittings comprising a door handle, lock, classroom number and name card slot (**Plate 20**). Glazed windows between the classroom and the corridor would have enabled observation of classrooms without disturbing the class. On the northern side of each of these corridors are two toilet blocks, one for boys and one for girls. Examples of original sinks (**Plate 21**), toilet systems and stalls (**Plate 22**) are retained. The floors are poured concrete and in some cases tiled. The original radiators have been retained throughout the school building (**Plate 23**).
- 3.1.15 The boiler room and coal store (rooms G8 & G9) are situated to the east of the kitchen (room G7). The rooms are partially sunk and accessed by an external stairway. Both rooms have bare brick walls, a poured concrete floor and shuttered concrete ceiling (**Plates 24 & 25**). The coal store shows evidence of having been partially rebuilt and or raised. Three floor level slots between the coal store and the boiler room indicate the location of there coal worms which would have fed the boilers. All of the original apparatus has been removed.
- 3.1.16 The building has a single first floor room, located above the main entrance (room F1) This room is rectangular in plan and although it now houses an art room (**Plate 26**) was unlikely to have been intended as a teaching space. This room is accessed via a concrete staircase with a wrought iron banister and balustrade (**Plate 27**).

## 3.2 Building 2

- 3.2.1 Building 2 (**Figure 3, Plate 28**) is single storey in plan and a typical CLASP (Consortium of Local Authorities Special Programme) style school. There are three phases of construction, the first dating to 1974, the second to the 1980s and the third to the 1990s. This final phase joined both the 1974 and 1980s buildings together (**Figure 3, Plate 29**). Internally the building is largely open plan with partition walls and screens, sectioning off teaching areas and multipurpose rooms (**Plates 30 & 31**), although the staff room is given its own dedicated space (**Plate 32**).

## 4. Discussion

### 4.1 Building 1

- 4.1.1 Building 1 is a purpose built late 1950s school, which was constructed to a standard school design. The building is reflective of the developments in school design and architecture which was gradually working its way towards the prefabricated CLASP schools of the 1970s. There is a local tradition that the building was built with the dual purpose in mind of providing an auxiliary hospital in the event of further wars. It was not possible, given the limited scope of this survey, to ascertain whether this intended secondary use was documented. However, planning for war infrastructure was a frequent consideration by local authorities during the Cold War, and the design of the school (with general single level floor plan and wide corridors) would have facilitated such a use.
- 4.1.2 The building retains a number of original features, including doors, radiators and sinks and toilets, although many of the original windows have been replaced with new PVC. The layout of the building has received little alteration and the intended communication through the building is still legible.

### 4.2 Building 2

- 4.2.1 Building 2 is a standard CLASP school designed and constructed in 1974, with later alterations and extensions. The building retains few original features and the legibility of communication through the building has been in part lost by the later alterations the building has received.

## 5. Archive

### 5.1 Location and Deposition

- 5.1.1 The project archive has been compiled into a stable, fully cross-reference and indexed archive in accordance with Appendix 6 of Management of Archaeological Projects (2<sup>nd</sup> Edition, Historic England 1991) and Archaeological archives – a guide to best practice in creation, compilation, transfer and curation (Brown 2007). The project archive is currently held at the offices of Ecus Ltd in Sheffield, under the project code 7527 and will be deposited in due course with Nottinghamshire Archives.
- 5.1.2 It is also of note to future researchers that Sutton Library have conducted a photographic survey of the school, and the information collated by them can be consulted in their collection.

### 5.2 OASIS

- 5.2.1 In line with best practice, a copy of this report will be made available through the Online AccesS to Index of archaeological InvestigationS (OASIS) Project (<http://ads.ahds.ac.uk/project/oasis/>), reference no. ecusltd1-244374. A copy of the OASIS form is reproduced in **Appendix 3**.

## 6. References

Chartered Institute for Archaeologists (CIfA) 2014. *Standard and guidance for the archaeological investigation and recording of standing buildings or structures.*

Historic England 2010. *England's Schools History architecture and adaptation* English Heritage: Swindon.

Historic England (HE) 2006. *Understanding historic Buildings – A guide to good recording practice*

Keath, M.P.K. 1983. *The Development of School construction systems in Hertfordshire 1946-64.*

## Plates



**Plate 1:** View of main entrance to Building 1 (Film 1.7)



**Plate 2:** General view of west elevation, including view of the Children's entrance to the former cloakrooms (Film 1.6)



**Plate 3:** General view of south facing elevation and concrete flagged terrace (Film 1.5)



**Plate 4:** General view of south facing elevation and concrete flagged terrace (Film 1.5)



**Plate 5:** Detail of original school boundary fence (Digital)





**Plate 6:** General view of east side of the building and tarmacadam playground (Film 1.2)



**Plate 7:** Detail of assembly hall windows, chimney and kitchen block (Film 1.3)



**Plate 8:** General view of assembly hall, kitchen block, chimney, boiler room and coal store (Film 1.1)



**Plate 9:**



**Plate 10:** General view of the assembly hall, Room G6 (Film 1.34)



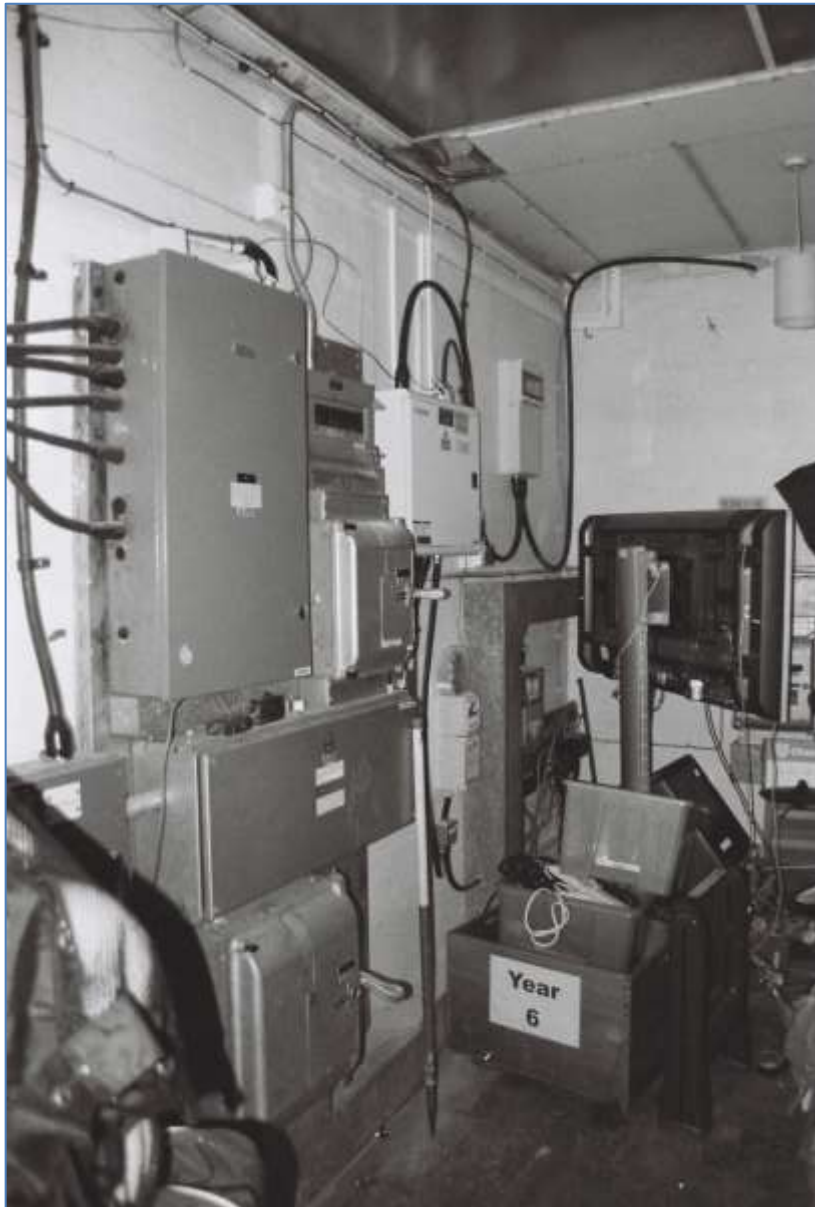
**Plate 11:** General view of the kitchen Room G7 (Film 1.29)



**Plate 12:** General view of the welded lateral truss in room G7 (Film 1.28)



**Plate 13:** General view of offices, off of corridor room G10 (Film 1:17)



**Plate 14:** Detail of original switch room and equipment (Film 1.18)



**Plate 15:** General view along corridor, Room G16 (Film 1:27)



**Plate 16:** General view of library, formerly a cloakroom (Film 1.26)



**Plate 17:** Detail of original coat hook bench (Film 1.23)



**Plate 18:** Original Staff Room door plate (Film 1.25)



**Plate 19:** General view of classroom space (Film 1.24)





**Plate 20:** Detail of original classroom door, note handle, classroom number and name card slot (Film 1.21)



**Plate 21:** Detail of original sinks for the children (Film 1. 20)



**Plate 22:** Detail of original toilets and stalls (Film 1.22)



**Plate 23:** Detail of original radiator (Film 1.19)



**Plate 24:** General view of boiler room, evidence of rebuilding and slots for the former coal worm drives (Film 1.12)



**Plate 25:** General view of coal store. The three wooden hatch doors are situated above a change in the brick work which possibly indicates later rebuilding (Film 1.13)



**Plate 26:** General view of room F1 (Film 1.30)



**Plate 27:** Detail of original staircase and hand rail (Film 1. 32)



**Plate 28:** General view of Building 2, original 1974 element (Film 1.9)



**Plate 29:** General view of Building 2, including the later 1980s and 1990s extension (Film 1.8)





**Plate 30:** General view of open plan classroom in original Building 2 (Film 1.15)



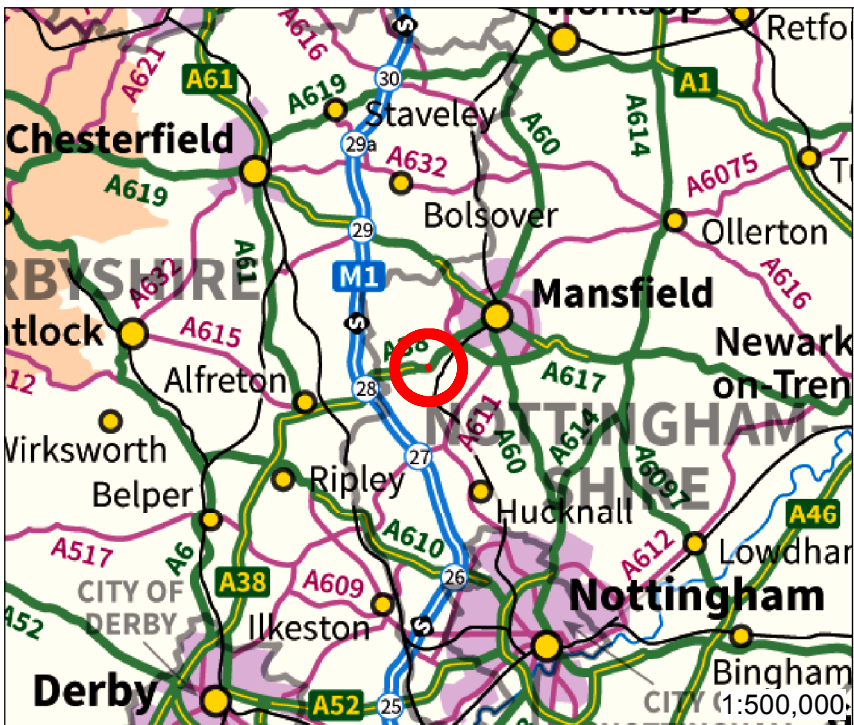
**Plate 31:** General view of open plan classroom in the 1980s extension of Building 2, note use of screens (Film 1.14)



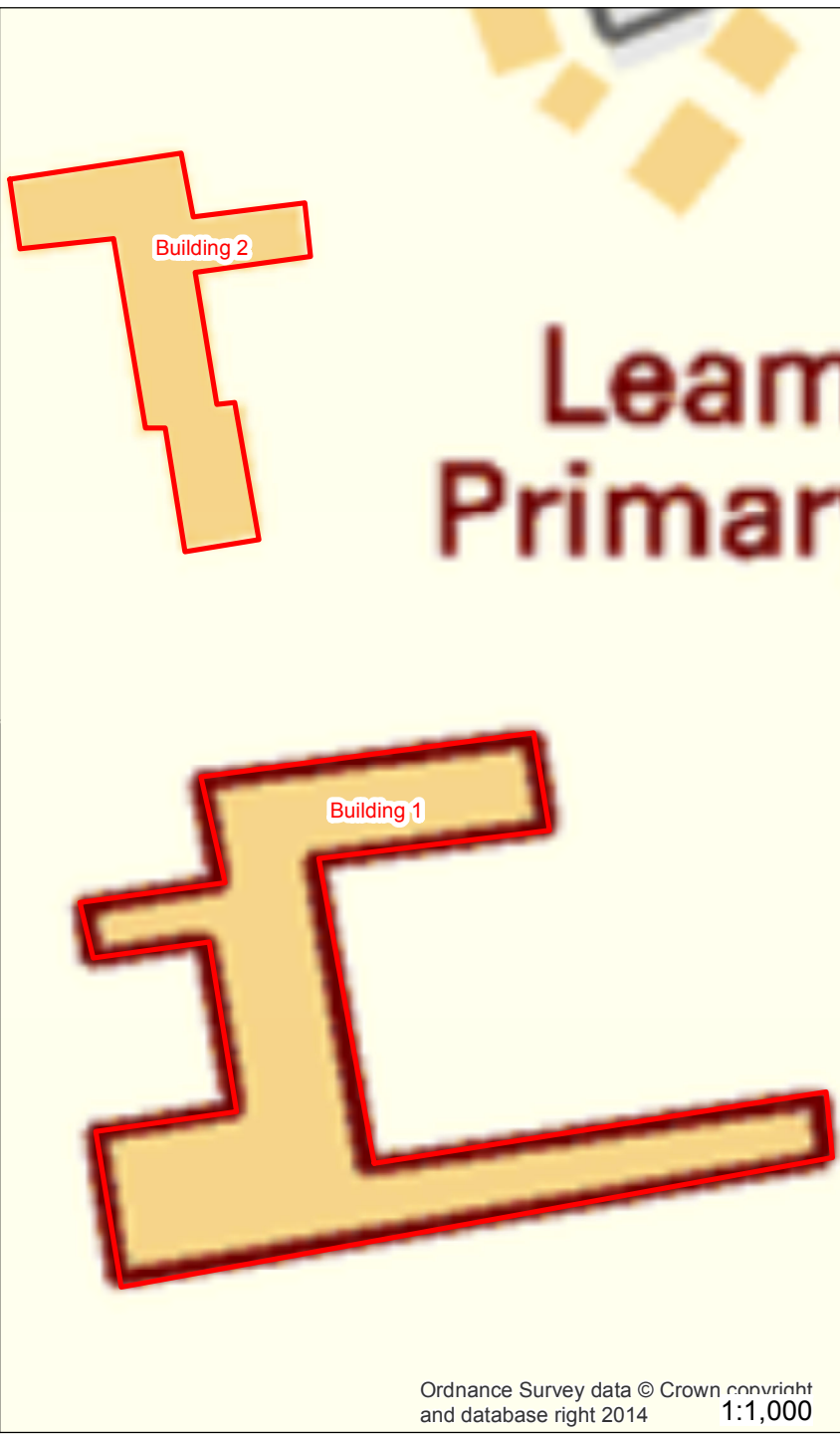
**Plate 32:** General view of the staffroom in Building 2 (Film 1.16)

## Figures

Site Boundary



Ordnance Survey data © Crown copyright and database right 2014 1:5,000

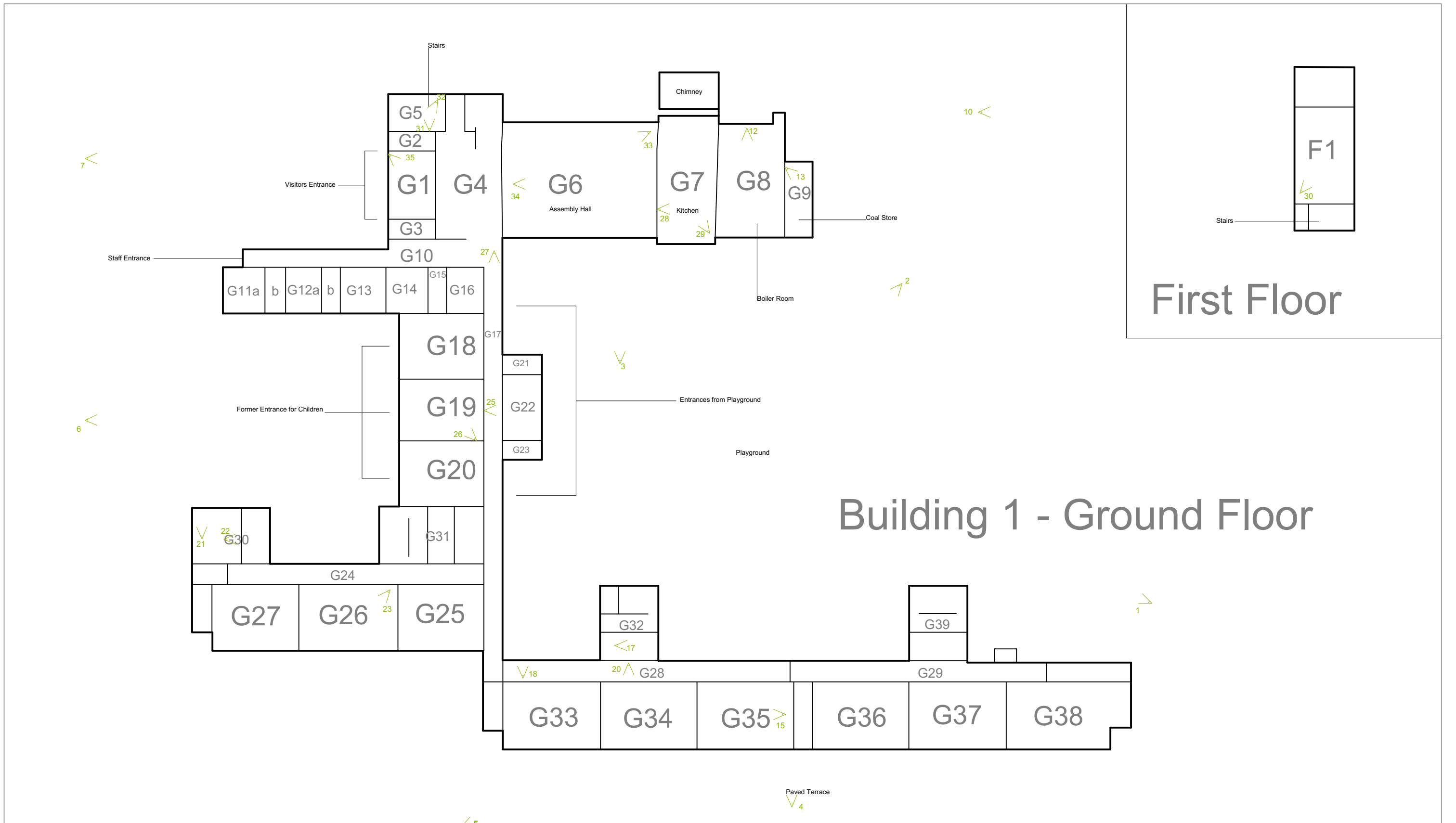


Ordnance Survey data © Crown copyright and database right 2014 1:1,000

Bowmer and Kirkland  
Leamington Primary School

Figure 1: Site Location

Brook Holt 3 Blackburn Road Sheffield S61 2DW  
T: 0114 2669292 www.ecusltd.co.uk



# Building 1 - Ground Floor

## First Floor

ecus  
ENVIRONMENTAL CONSULTANTS

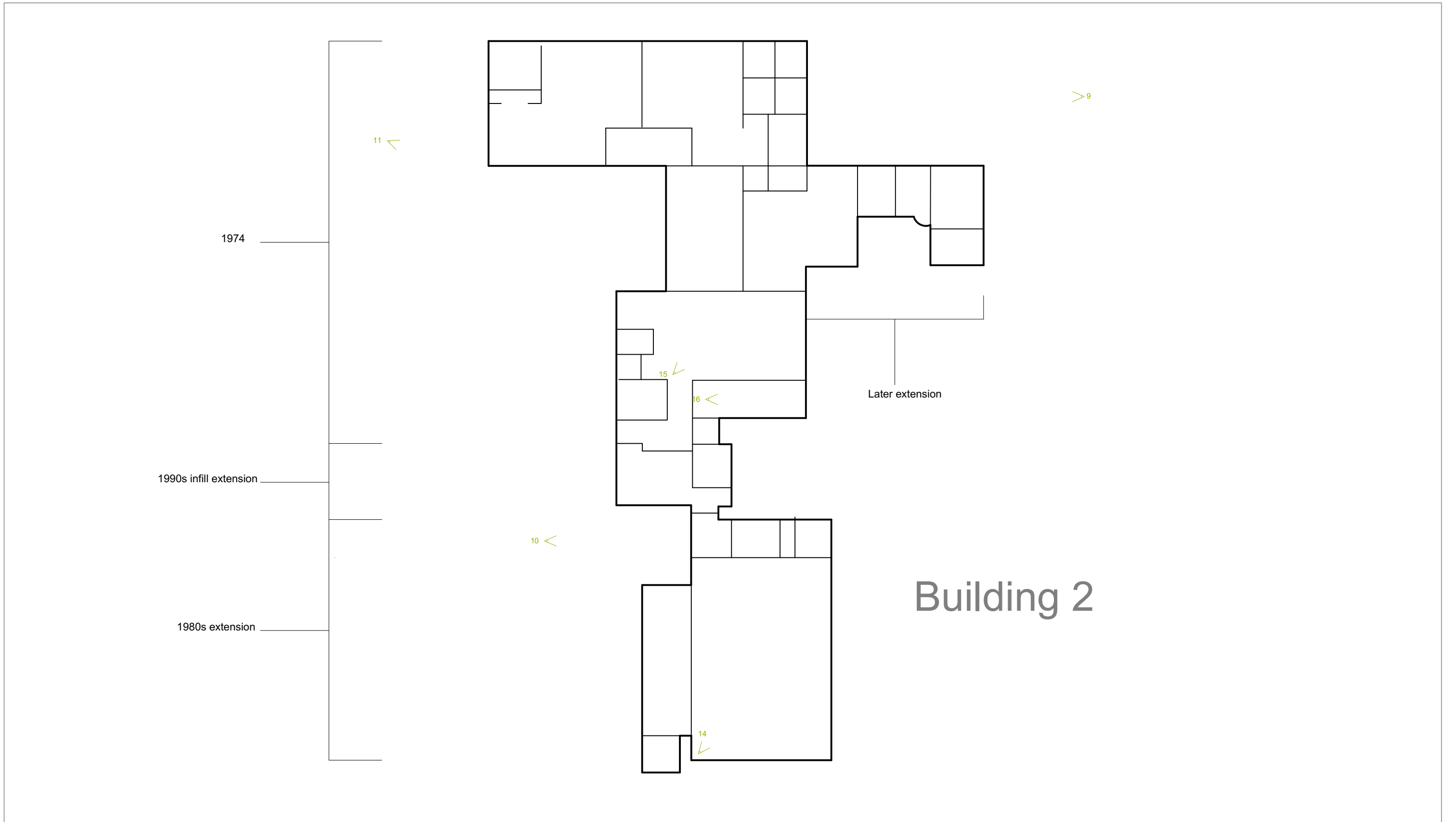
Brook Holt ■ Blackburn Road ■ Sheffield ■ S61 2DW  
tel: 0114 266 9292 ■ www.ecusltd.co.uk

- Key**
- BW Block Window
  - BD Blocked Door
  - BFP Blocked Fireplace
  - Extent of blocking
  - G5 Room number
- 44 < Plate viewpoint reference



**Bowmer and Kirkland**  
Leamington Primary School - Historic  
Building Recording

**Figure 2: Building 1, Sketch Plan and  
Photo Locations**



Brook Holt ■ Blackburn Road ■ Sheffield ■ S61 2DW  
 ■tel: 0114 266 9292 ■ www.ecusltd.co.uk

- Key**
- BW Block Window
  - BD Blocked Door
  - BFP Blocked Fireplace
  - Extent of blocking
  - G5 Room number
  - 44 Plate viewpoint reference



**Bowmer and Kirkland**  
 Leamington Primary School - Historic  
 Building Recording

**Figure 3: Building 2, Sketch Plan and  
 Photo Locations**

## Appendix 1: Photo Registers

SITE CODE: 7527 LEAMINGTON NURSERY AND PRIMARY SCHOOL		CAMERA: 35 MM FILM: B/W			FILM No. / 001	
FRAME	SUBJECT	DESCRIPTION	SCALE (M)	VIEW FROM	INITIAL	DATE
1.1	BUILDING 1 - EXTERIOR	GENERAL VIEW ACROSS PLAYGROUND	2 M	SW	JT	19/02/2016
1.2	BUILDING 1 - EXTERIOR	GENERAL VIEW ACROSS PLAYGROUND	2 M	NE	JT	19/02/2016
1.3	BUILDING 1 - EXTERIOR	DETAIL OF ENTRANCE TO HALL	2 M	S	JT	19/02/2016
1.4	BUILDING 1 - EXTERIOR	VIEW OF DOORS AND WINDOWS	2 M	S	JT	19/02/2016
1.5	BUILDING 1 - EXTERIOR	VIEW ALONG ELEVATION	2 M	SW	JT	19/02/2016
1.6	BUILDING 1 - EXTERIOR	DETAIL OF CHILDREN'S ENTRANCE TO CLOAKROOMS	2 M	W	JT	19/02/2016
1.7	BUILDING 1 - EXTERIOR	GENERAL VIEW OF RECEPTION	2 M	W	JT	19/02/2016
1.8	BUILDING 2 - EXTERIOR	GENERAL VIEW OF WEST FACING ELEVATION	2 M	SW	JT	19/02/2016
1.9	BUILDING 2 - EXTERIOR	GENERAL VIEW OF EAST FACING ELEVATION	2 M	E	JT	19/02/2016
1.10	BUILDING 2 - EXTERIOR	DETAIL OF 1980S WINDOW	2 M	W	JT	19/02/2016
1.11	BUILDING 2 - EXTERIOR	GENERAL VIEW OF WEST FACING ELEVATION	2 M	NW	JT	19/02/2016
1.12	BUILDING 1 - GROUND FLOOR	VIEW OF BOILER ROOM AND COAL FEEDERS	2 M	NW	JT	19/02/2016
1.13	BUILDING 1 - GROUND FLOOR	VIEW OF COAL BUNKER	2 M	NW	JT	19/02/2016
1.14	BUILDING 1 - GROUND FLOOR	GENERAL VIEW OF 1980S NURSERY	2 M	SW	JT	19/02/2016
1.15	BUILDING 1 - GROUND FLOOR	GENERAL VIEW OF CLASS ROOM	2 M	SW	JT	19/02/2016
1.16	BUILDING 1 - GROUND FLOOR	GENERAL SHOT OF STAFF ROOM	2 M	w	JT	19/02/2016
1.17	BUILDING 1 GROUND FLOOR	DETAIL OF OFFICES	2 M	W	JT	19/02/2016
1.17	BUILDING 1 - GROUND FLOOR	DETAIL OF ORIGINAL ELECTRICS	1 M	W	JT	19/02/2016

1.18	BUILDING 1 – GROUND FLOOR	DETAIL OF RADIATOR	1 M	S	JT	19/02/2016
1.19	BUILDING 1 – GROUND FLOOR	DETAIL OF SINKS	30 CM	W	JT	19/02/2016
1.20	BUILDING 1 – GROUND FLOOR	DETAIL OF ORIGINAL DOOR	1 M	N	JT	19/02/2016
1.21	BUILDING 1 – GROUND FLOOR	DETAIL OF ORIGINAL TOILET FACILITIES	1 M	S	JT	19/02/2016
1.22	BUILDING 1 – GROUND FLOOR	DETAIL OF ORIGINAL COAT BENCH	1 M	W	JT	19/02/2016
1.23	BUILDING 1 – GROUND FLOOR	GENERAL VIEW OF CLASSROOM	2 M	NE	JT	19/02/2016
1.25	BUILDING 1 – GROUND FLOOR	DETAIL OF STAFFROOM DOOR SIGN DETAIL OF STAFFROOM DOOR SIGN	30 CM	W	JT	19/02/2016
1.26	BUILDING 1 – GROUND FLOOR	GENERAL VIEW OF FORMER CLOAKROOM	2 M	SE	JT	19/02/2016
1.27	BUILDING 1 – GROUND FLOOR	VIEW ALONG CORRIDOR	2 M	N	JT	19/02/2016
1.28	BUILDING 1 – GROUND FLOOR	DETAIL OF STEEL TRUSS	N/A	W	JT	19/02/2016
1.29	BUILDING 1 – GROUND FLOOR	VIEW OF ORIGINAL KITCHEN	2 M	SE	JT	19/02/2016
1.30	BUILDING 1 – FIRST FLOOR	GENERAL VIEW OF ART ROOM	2 M	SW	JT	19/02/2016
1.31	BUILDING 1 – GROUND FLOOR	DETAIL OF HAND RAIL AND STAIRS	30 CM	S	JT	19/02/2016
1.32	BUILDING 1 – GROUND FLOOR	GENERAL VIEW OF STAIRS	2 M	E	JT	19/02/2016
1.33	BUILDING 1 – GROUND FLOOR	GENERAL SHOT OF HALL	2 M	W	JT	19/02/2016
1.34	BUILDING 1 – GROUND FLOOR	GENERAL SHOT OF HALL	2 M	NE	JT	19/02/2016
1.35	BUILDING 1 – GROUND FLOOR	GENERAL SHOT OF MAIN ENTRANCE	2 M	NW	JT	19/02/2016
1.36	N/A	I.D SHOT	N/A	N/A	JT	19/02/2016



## **Appendix 2: Agreed Historic Building Recording Brief**

Nottinghamshire County Council  
Conservation  
County Hall  
Loughborough Road  
West Bridgford  
Nottingham



**ECUS Ltd**

Brook Holt  
3 Blackburn Road  
Sheffield  
S61 2DW  
United Kingdom

**t** +44 (0)114 266 9292  
**e** [contactus@ecusltd.co.uk](mailto:contactus@ecusltd.co.uk)  
**w** [www.ecusltd.co.uk](http://www.ecusltd.co.uk)

**FAO: David Littlewood**

By email only

Our ref: 7527

Your ref: n/a

16<sup>th</sup> February 2016

Dear David

**Re. Leamington Primary and Nursery School**

Further to our recent conversation, please find below our proposed methodology for building recording of Leamington Primary and Nursery School.

We are hoping to undertake the survey this week during the half-term holiday and are initially aiming for the morning of the 19<sup>th</sup> of February. The results of the survey would be available between 5-10 working days of completion of the survey (depending on processing time for record photography) and a draft report will then be submitted for consultation.

---

***Specification for Historic Building Recording***

In accordance with Condition 21 of planning application 4/V/2015/0130 the historic building record of the Leamington Primary and Nursery School will be undertaken to Historic England Level 1 standard (as detailed in Historic England 2006 *Understanding Historic Buildings*), and in accordance the Chartered Institute for Archaeologists' *Standards and guidance for the archaeological investigation and recording of standing buildings or structures* (2014). As Level 1 surveys are typically used for gathering baseline information on historic structures, this survey will be enhanced with additional record photography and a descriptive report commensurate with a Level 3 survey.

**Survey**

The survey will principally comprise the creation of a photographic archive, supplemented with a basic drawn record.

The photographic survey of the building will be undertaken using 35 mm black and white film and colour digital. The subject and direction of each photograph will be recorded on *pro-forma* registers, and photographic scales will be used in all shots wherever possible.

The photographic survey will capture general views of the building and its wider setting including a series of oblique views showing all external elevations of the building to provide an overall impression of its size and shape. Where an individual elevation embodies complex historical information views at right angles



to the place of the elevation will also be taken. A superficial inspection will be undertaken of the interior of the buildings to identify significant features and capture a record of the character of principal interior spaces.

Existing building plans will be annotated, identifying features of heritage interest and the location of photographs.

### Report

The results of the survey will be presented within a report, containing:

- A non-technical summary;
- Introductory statements;
- Aims and objectives;
- Methodology;
- The results of the survey, comprising a summary of the building's type, its materials and dates;
- Conclusion;
- Supporting drawings, photographs etc.
- Location of archive; and
- Reference.

The completed report will be subject to internal quality assurance and submitted to the client for submission to the local planning authority.

### Archive

The project will result in the creation of a small physical archive, comprising survey notes, photographic prints and a copy of the report. This will be deposited with Nottinghamshire Archives to ensure its access for future researches and its long term curation. The digital record, comprising of digital photography, project details, and pdf of the report will be archived through the Archaeological Data Service using their Online Access to the Index of archaeological investigationS (OASIS) system. Both archives will be compiled in accordance with professional standards and fully cross referenced and indexed.

---

I trust that this methodology will meet with your requirements. If you require any further information or clarifications please do not hesitate to contact me.

Yours sincerely,



James Thomson  
Heritage Consultant

E: james.thomson@ecusltd.co.uk

## Appendix 3: OASIS Form

**OASIS ID:** ecusltd1-244374

**Project name:** Leamington Primary & Nursery School, Clare Road, Sutton in Ashfield, Nottinghamshire

**Short description of the project:** Ecus Ltd were commissioned by Bowmer & Kirkland to undertake Historic Building Recording of the two building which form Leamington Primary & Nursery School buildings, Clare Road, Sutton in Ashfield, Nottinghamshire (hereafter 'the site'), located at National Grid Co-ordinate 449613, 357726. The building survey was completed in February 2016. A brief was agreed with the Historic Environment officer for Nottingham for a Level 1 survey enhanced with additional record photography and a descriptive report commensurate with a Level 3 survey. Leamington Primary and Nursery School is located off Clare Road. Playing fields are located to the east. The school site also includes tarmac playgrounds and car parks, green spaces as well as a flagged yard to the south. There are two buildings within the site which house the school and nursery. Building 1 is a purpose built late 1950s school, which was constructed to a standard school design. The building is reflective of the developments in school design and architecture which was gradually working its way towards the prefabricated CLASP schools of the 1970s. The building retains a number of original features, including doors, radiators and sinks and toilets, although many of the original windows have been replaced with new PVC. The layout of the building has received little alteration and the intended communication through the building is still legible. Building 2 is a standard CLASP school designed and constructed in 1974, with later alterations and extensions. The building retains few original features and the legibility of communication through the building has been in part lost by the later alterations the building has received.

**Project dates:** 19.02.2016 – 29.02.2016

**Previous/future work:** No / No

**Any associated project reference codes:** 7527 - Contracting Unit No.

**Type of project:** Building Recording

**Site status:** None

**Current Land use:** Other 2 – Building In Use

**Monument type:** Building Modern

**Significant Finds:** None None

**Methods & techniques:** 'Photographic Survey', 'Survey/Recording Of Fabric/Structure'

**Prompt:** National Planning Policy Framework - NPPF