

HISTORIC SCOTLAND PROPERTIES IN CARE
MINOR ARCHAEOLOGICAL WORKS 2011

Caerlaverock Castle: Excavation, March 2011.

HS PIC Index Number: 90046

SITE: Caerlaverock Castle, Dumfries and Galloway.

N.G.R.: Centred at c NY 0244 6583

DESCRIPTION: Excavation of a series of trenches in a field to the N of the Visitor Centre on order to determine the potential archaeological impact of a new car park.

PROJECT CODE: HSCO-90046-2011-01

CONTENTS:	Introduction.....	1
	Description.....	3
	Conclusions.....	10
	Figures.....	15
	List of Contexts.....	22
	List of Drawings.....	27
	List of Finds.....	28
	List of Samples.....	27
	List of Digital Photographs.....	28



4 Western Terrace, Murrayfield, Edinburgh EH12 5QF.

JUNE 2011

(Re-submission with Finds included)

INTRODUCTION

Kirkdale Archaeology was commissioned by Historic Scotland to excavate a series of trenches near Caerlaverock Castle (Fig.1). These trenches were dug across the field to the immediate N of the visitor centre for the Castle, and were designed to assess the suitability of this field for the construction of a desired new car park.

Setting

Caerlaverock Castle itself is situated some 250m to the S of the field, and is a picturesque triangular ruin surrounded by a moat. It is thought to have been first built in the later thirteenth century and to have been occupied until the mid-seventeenth century. The castle suffered two major sieges, one in 1300 and the other in 1640.

The ground to the immediate N of the Castle slopes down gently to the S, and may represent the castle's outer court. A large stone gate occupies the NE corner of this area, just to the S of the field being considered, although it is possible that it has been moved.

To the immediate E of this gate is a row of cottages, known as Greenhead. To the W is the current visitor centre, evidently originally a farmstead known as Greenside, parts of which may date back to at least the seventeenth century.

The ground slopes up steeply for a few metres to the immediate N of these structures. This effect has probably been enhanced during the construction of the buildings and their associated roads and car parks, but in its original form it represents the post-glacial raised beach with poorer drained land to the S of this still evident today.

The field under investigation has already been subjected to two campaigns of geophysical survey (O' Grady, O. J. T 2008; O' Grady, O. J. T. 2010) and has had a series of small test pits excavated across it previously by Kirkdale Archaeology. The geophysical survey suggested a number of features (discussed below), with an apparent concentration towards the SW corner of the field. The test trenches revealed a plough soil which in places seemed to seal a possible earlier plough soil, indicating that features may survive below this elsewhere in the field. A struck chert flake was recovered from the lower soil horizon. A summary cartographic and historical assessment of the field has also been undertaken, and this found little on maps prior to the early-nineteenth century, after which the field is shown in its

current form, bounded by the present B725 road to the N and the access to the castle along its E side and the E-half of its S side.

The field itself occupies a fairly level shelf between the raised beach and the steeper land to the N of the B725. It slopes down gently to the S and W, dropping more noticeably in this direction in its SW corner. It is orientated approximately E/W (the hedge along the W side of the field is assumed to run N-/S in this report), and measures 260m long by 105m wide. The field is currently under pasture, and has not been ploughed within the last twenty years.

A series of crop marks are particularly evident in the field to the W (Fig.2 and Fig.3), although some extend E into the field under consideration. These include a large square enclosure with a ditch running away from its S corner, with an apparent pit alignment running through this, meandering along in an approximately NW/SE direction although seemingly petering out before the E limit of the W field. Within the E field are two ditches which run across the boundary separating the fields, that to the S approximately E/W with that to the N closer to NW/SE. The example to the N seems to coincide with a geophysical response, interpreted as a possible robbed out wall line (O' Grady O. J.T: 2010 - anomaly 'A' in both the magnetometer and resistivity results).

Historic Scotland had designed a series of fifteen trenches of varying sizes and alignments to try to test the archaeological potential of the field. The position of these was mostly a response to the geophysical information, with blank areas targeted as well as areas of potential interest. They were within the W half of the field, as this end has already been identified as being the most suitable car park location. The aim was to assess the archaeological remains encountered, not to fully excavate the site.

Work started using a four tonne excavator, but this was soon upgraded to a fourteen tonne machine. Both used flat bladed buckets of varying size, dependent on the trench width. Two trenches (trenches 7 and 15) were not excavated as they lay too close to the S field boundary. The trenches were then hand cleaned, although due to time constraints Trench 13 was not cleaned at all, and Trench 10 was only partially cleaned.

DESCRIPTION

Trench 1: Fig.4 and Fig.5

This was located near the NW corner of the field, close to its current access gate from the main road. It was orientated approximately NW/SE and measured 24m long by 1.75m wide. Below 0.1m of topsoil **100** was a 0.3m thickness of mid-brown sandy silt with some small rounded stones and charcoal flecks throughout, **101**. At the NW end of the trench a thin (0.08m) layer of small sub-angular gravel chips **110** separated **100** from **101**. This ran across the trench SW/NE and extended into it for c.1.5m. Context **101** then sealed **102**, a deposit of orangey-brown silty clay again with some small rounded stones and charcoal flecks throughout, c.0.1m thick.

The removal of **102** exposed **109** across the trench, except for three discrete locations where probable features dug through **109** were recorded. Context **109** consisted of compact fine orangey-red sand, with discrete patches of both coarser red sand and areas of small angular yellowish gravel. The trench was bottomed on the top of **109**.

At the extreme NW end of the trench **103**, a deposit of mid-brown sandy silt with some small stones and charcoal flecks throughout was recorded. Only part of its S edge was within the trench, but it suggested a linear (approximately E/W) feature at least 2.1m long by 0.9m wide.

Some 2.5m SE of **103** a small oval patch of mid-brown sandy silt with some charcoal flecks throughout and a discrete patch of dark brown sandy silt against its SE edge, **105**, was recorded. This measured 0.45m NE/SW by 0.25m NW/SE.

The final possible feature, **107**, was recorded near the SE end of the trench, running out of it to the NE. Context **107** comprised a mid-brown sandy silt with some flecks of charcoal, occupying an area of 0.2m NW/SE by at least 0.25m NE/SW

Trench 2: Fig.4 and Fig.6

This was opened 5.5m W of the SE end of, and at a right-angle to, Trench 1. It measured 35.5m NE/SW by 1.9m NW/SE. Topsoil **200** sealed 0.3m of **201**, mid-brown sandy silt, which in turn sealed 0.1- 0.15m of orangey brown sandy silt **202**.

Context **202's** removal exposed **205**, the same as **109**, along the trench, with two possible cuts through it. Approximately central to the trench, against its SE side, **203** consisted of a

patch of charcoal flecked mid-brown sandy silt. It was straight sided, suggesting a rectangular feature 1.7m NE/SW by at least 0.55m NW/SE. At the NE end of the trench **206** was an area of dark brown sandy silt with some small stones and charcoal flecks throughout. This seemed to run in a curve, running out of the trench at its NE end and NW side, suggesting a feature 0.75m wide and at least 1.7m long.

Trench 3: Fig.4 and Fig.7

This was to the E of Trench 2, close to the N boundary of the field. It was orientated close to N/S and measured 36m long by 2.5m wide. The familiar sequence of 0.1m of topsoil **300** over 0.3m of dark brown sandy silt **301** was removed, but here **301** lay directly over subsoil **302**. Two possible features were noted against **302**.

Context **303**, near the SE end of the trench consisted of an area of mid-brown sandy silt rich in charcoal, sub-round in shape and measuring 0.8m in diameter. Slightly to the NW of the centre of the trench, **304** was an oval patch of mid-brown sandy silt 0.42m NW/SE by 0.32m NE/SW.

Trench 4: Fig.4 and Fig.8

To the S of trenches 1 and 2, and close to the W edge of the field, Trench 4 ran NW/SE and measured 27m long by 2.7m wide. The same sequence as in Trench 3 - of topsoil (**400**) over 0.3m of mid-brown sandy silt (**401**) sealing subsoil (**402**) - was recorded.

Two possible features dug through **402** were recorded, both near the NW end of the trench. Context **403** was an oval patch of mid-brown sandy silt measuring 0.5m NW/SE by 0.36m SW/NE. Just over 1m SE of **403** was **404**, an area of charcoal rich orangey brown sandy silt, somewhat amorphous in plan measuring 0.6m NW/SE by 0.34m SW/NE.

Trenches 5 & 6: Fig.4 and Fig.9

Trenches 5 and 6 connected to form an L-shape in the SW corner of the field. Trench 5 was orientated NE/SW measuring 30m long by 5.5m wide, with Trench 6 running off to the NW for 14.75m from its SW end, and measuring 2m wide. The trenches will be considered together, as only one feature was recorded in Trench 6, and this ran on into Trench 5.

Approximately 0.1m of topsoil **500** sealed 0.45m of mid-brown sandy silt **501**, which overlay the natural subsoil **517**. A series of seven possible features were noted at this stage.

At the NE end of Trench 5 a roughly circular area of pale grey silty clay some 0.3m in diameter was recorded. To the immediate SE of this, a linear feature **512** crossed the trench, running approximately NW/SE. This comprised a pale brown sandy silt with occasional charcoal flecks and small stones throughout, and was 1.5m wide by at least 5.5m long. To the S of **512**, against the NW side of the trench was a large area of dark brown sandy silt rich in small stones, unusually including some fragments of red sandstone. This was oval in shape, measuring 2.5m N/S and at least 2.7m E/W. SE of this **508** was a small circular patch of mid-brown sandy silt very rich in charcoal and some 0.3m in diameter.

Context **508** was close to the N limit of **507**, an extensive spread of mid-brown sandy silt rich in stones, mostly small but including some unusually large for the site. It crossed the trench heading approximately NE/SW and was some 9m wide. The S edge of **507** coincided with a slight, but noticeable drop in the underlying subsoil to the SW. Possibly cutting it was a linear spread of mid-brown sandy silt with some stones and charcoal flecks throughout, numbered **504**. This ran NE/SW and was some 0.6m wide, widening slightly at the NE end, where a discrete concentration of charcoal was given a separate context number, **505**. It was at least 4m long, running out of the trench to the NE, and to the SW merging into **502**.

Context **502** was a long wide linear deposit of mid-brown sandy silt that continued into Trench 6, where it was numbered **602**. Some charcoal flecks and small stones were evident, and a thick pierced slate was recovered directly overlying (and therefore not necessarily associated with) it from the area of Trench 6. Context **502** seemed to be orientated approximately E/W, slightly squint to the modern field boundary to the S, and was 2.1m wide and at least 12.5m long. A slot 0.25m deep was dug across **502** where it left the SE side of Trench 5. This exposed an earlier fill **516** roughly central to the feature, consisting of small to medium sized sub-angular and rounded stones. No structure could be seen to this, but it sloped down to the E and was not excavated. These fills sat in a steep sided cut **503** which was not bottomed.

Trench 7

Trench 7 should have been dug next to the field's S boundary towards its W end. This same boundary made it impractical to excavate.

Trenches 8 & 9: Fig.4, Fig.10, Fig.11 & Fig.17

Trenches 8 and 9 ran together at right-angles, they were opened up to the E of trenches 2, 4 and 5. Trench 8 was orientated approximately NE/SW and was 53m long by 2m wide. At a distance of 6.75m NE of the SW end of Trench 8, Trench 9 ran off to the NW for 15.5m with a width of 2.75m.

Within Trench 8, 0.1m of topsoil **800** sealed up to 0.45m of dark brown sandy silt **801**. This exposed subsoil **802** across the whole trench, with six possible features dug through it. At the extreme SW end a deposit mid-brown silty sand **803** had only part of its N edge exposed. This seemed to be orientated E/W and was at least 2.5m long by 1.5m wide. Its alignment suggested a continuation of **502/ 602**, which would make the feature at least 34.5m long.

To the NE of **803**, at the junction of trenches 8 and 9, an apparently curving feature **804** was recorded. This comprised a deposit of mid-brown sandy silt averaging 1.2m wide and at least 3m long. It ran from the SE side of Trench 8 to clip the extreme NE corner of Trench 9. Within the arc of **804** a rectangular area of mottled deposits **805** was noted. It comprised yellowish clay, brown silt and pinkish sand covering a roughly rectangular area measuring 0.9m SW/NE by at least 0.55m NW/SE, running out the SE side of the trench.

Some 12m NE of **805** a thin (0.35m wide) linear strip of mid-brown silt, **806**, crossed the trench heading NW/SE. To its NE, **807** lay near the NW side of the trench and was a small oval patch of mid-brown silty clay. Approximately 10m NE of **807** was an area of orange sand **808**, this ran out the SE side of the trench. It measured 0.8m SW/NE by at least 0.45m NW/SE.

Trench 9 was covered by 0.1m of topsoil **900** over 0.45m of mid-brown sandy silt **901**. The natural subsoil **908** was disturbed by three possible features, all towards the NW end of the trench. Context **904** consisted of a patch of mid-brown silty sand with frequent charcoal flecks and some patches of pale grey clay throughout; it seemed rounded and measured 0.45m NW/SE by 0.35m before running out the trench to the NE.

To the S of **904** was a linear spread of pale brown sandy silt with some small stones and charcoal flecks throughout. Context **902** ran approximately NW/SE, although somewhat squint to the trench. It was 1.5m wide and could be traced for some 10m, although its alignment seems to match that of **512** to the SE, which would make it at least 19.3m long.

Against the SE side of **902**, and running out of the trench to the SW, a further feature **906** was noted. This was defined by an area of mid-grey silty sand with some patches of fine orange sand and charcoal flecks throughout. Numerous stones were apparent, and protruding between these fragments of handmade pottery could be seen. As this pottery was fragmentary it was decided to fully excavate this feature, and as it lay so close to **902** a small area of this feature was also excavated to try to determine the relationship between the two.

Context **906** proved to sit in a cut **907** which just ran out the trench to the SW. It could still be seen to be a roughly oval feature 0.9m NW/SE by at least 0.55m NE/SW, but survived to a depth of only 0.15m. The sides were fairly steep and came to an uneven base sloping down from E to W. This seemed to cut through **902**, but the two features only just intersected, so this interpretation may be wrong.

Within **907** the fill **906** consisted mostly (*c.*70%) of mid-grey silty sand with patches of orangey fine sand and charcoal flecks throughout. The rest comprised stone and pottery, mostly small sub-angular/ rounded stones, but including some larger (up to 0.2m across) fragments which appeared to be shattered. These stones were particularly evident towards the top of the fill, where they directly overlay pottery. These consisted of a number of large sherds, concentrated towards the N side of the feature, with fragments noted throughout the feature. A decorated rim sherd was inverted against the N side of the cut, with a base sherd to the NE. A 100% sample of the fill of the feature was taken.

To the E of Trench 8, trenches 10, 11 and 12 ran together. Trench 10 measured 36.75m long by 5.75m wide and was orientated NE/SW. Approximately 7m NE of its SW end, Trench 11 ran NW for 17.5m, with a width of 4.25m. At the NE end of Trench 10, Trench 12 ran off to the SE for 22.75m and a width of 3.75m.

Trench 10: Fig.4 and Fig.12

Within Trench 10 the machine removed topsoil **1000** and 0.40m of plough soil **1001**, but due to time constraints only a strip 6m long of subsoil **1002** was cleaned up at the SW end of the trench. A series of five small roughly circular (possible) features were revealed (**1003-1007**) within this area. All were defined by a mid-brown silty sand, but the three most northerly (**1003**, **1004** and **1005**) were rich in small stones as well. These features were reasonably similarly spaced apart and together formed a rough 'L' shape. A further possible feature **1008** again consisted of mid-brown sandy silt, irregularly shaped in plan, some 1.6m NE/SW against the NW section of the trench.

Trench 11: Fig.4 and Fig.13

Trench 11 joined Trench 10 at a right-angle, and below topsoil **1100** and 0.35m of plough soil **1101** only a single feature was noted against subsoil **1104**. This feature, numbered **1102**, appeared as a large area of mid-brown sandy silt with some small stones and patches of charcoal throughout. It was located towards the SE end of the trench, against its SW side, and appeared to be roughly circular, measuring 4m NW/SE by at least 2.3m SW/NE.

Trench 12: Fig.4 and Fig.14

Trench 12 also ran off Trench 10 at a right-angle, and was covered by some 0.35m of plough soil **1201** below topsoil **1200**. Subsoil **1202** was exposed across the trench, with a total of fifteen possible features dug through it.

Towards the SE end of the trench a series of eight small areas of mid-brown silt, generally circular in shape were recorded (**1203-1210**). Five of these (**1203-1207**) seemed to form a fairly good alignment running NW/SE.

To the NW of these, **1211** consisted of a roughly oval area of mid-brown silt and some stones measuring 0.9m NW/SE by 0.3m NE/SW. To the NW of **1211** a further cluster of four possible features was noted. The largest, **1214**, ran out the trench to the NE, but was an area of charcoal flecked mid-brown sandy silt. This seemed to have straight sides, suggesting a rectangular feature 0.9m NW/SE by at least 0.7m NE/SW. Three small roughly circular areas of mid-brown sandy silt (**1212**, **1213** and **1215**) were noted around **1214**.

To the W of this cluster of possible features a further two were recorded against the SW side of the trench. Context **1216** to the SE comprised a somewhat amorphous area of mid-brown sandy silt containing some stones, measuring 0.8m NW/SE by at least 0.9m NE/SW.

Adjacent to **1216** a further feature **1217**, comprising a mid-brown sandy silt with some stones and charcoal flecks throughout, ran in a stretch 3.7m long by 0.35m wide roughly parallel to the trench edge. At both ends it turned SW to run out the trench, widening considerably at the SE end.

Trenches 13 & 14: Fig.4 and Fig.15 & Fig.16

To the NE of Trench 12, trenches 13 and 14 ran together in an 'L' shape. Trench 13 was orientated NW/SE and measured 29m long by 4.25m wide. At its SE end Trench 14 ran SW for 14.75m with a width of 3.2m. Trench 13 was never cleaned due to time constraints, while Trench 14 proved to be covered by topsoil **1400** over 0.3m of plough soil **1401**. Their removal exposed subsoil **1403**, with a single possible feature **1402** roughly central to the trench.

Context **1402** was a broadly circular (c.1m diameter) area of mid-brown sandy silt with frequent small rounded stones throughout.

Trench 15

Trench 15 should have been dug considerably to the E of the other trenches, against the S edge of the field near its SE corner. The proximity of the field boundary meant that this trench could not be opened.

Finds retrieved during the excavations

A very small assemblage of post- medieval /modern pottery was recovered from the plough soil. This is likely to reflect agricultural practices such as manuring , and is only noteworthy in terms of how little material was actually recorded. The thick stone roofing slate from trench 6 overlay the large linear feature **602**, but was also recovered from the plough soil. The most important finds recovered were the shards of prehistoric pot from context **906**. Although some large pieces were recovered, these have been kept with the sample bags from the feature, as they were so fragile.

CONCLUSIONS

Every trench that was cleaned-up produced probable archaeological features of varying form and density. Few were excavated, so their morphology and distribution provide the key indicators for classifying them. The narrow linear feature crossing Trench 8, **806**, is thought to be a modern water main heading towards the gate in the NW corner of the field. This feature will be considered no further, but most of the others can be fitted into one of five broad categories:

1. Linear.
2. Small, rounded.
3. Small, amorphous.
4. Large, rounded.
5. Curvilinear.

1: Linear features

Three features in the SW corner of the field and possibly one in the NW corner are included in the first category. The southernmost ran across three trenches, where it was numbered **502**, **602** and **902**. Within trenches 5 and 6 it was 2.1m wide, and it measured at least 34.5m long. A small trench across it showed it to have a steep sided cut and to be at least 0.25m deep. A lower fill **515** seemed to be a deliberate inclusion of rounded stones. No structure was noted to these in the small area examined, and it seems rather wide for a structurally retaining feature, so these are perhaps a deliberate backfill - perhaps designed to enhance drainage of the feature. It should be noted that its cut was considerably wider than at least the upper surface of **515**, suggesting that it was not initially dug to receive these stones. No finds were recovered from this, but a thick roof slate was recovered from directly over its fill within Trench 5. If this is associated with this feature it would suggest a medieval or later date for its backfill.

Running off the N side of **502** was a narrow slot **504** on a NE/SW alignment. This averaged only 0.6m wide and was traced for 4m before running out the trench to the NE. There was a concentration of charcoal, **505**, at this end just before it left the trench. To the SW it merged into **502**, and although the interface was carefully cleaned only excavation could

determine their relationship. The dimensions of this feature might suggest a drainage feature, running towards the lowest part of the field, but the charcoal concentration seems unlikely in such a context.

To the N of these, a narrower linear feature crossed two trenches, where it was numbered **512** and **902**. This seemed to follow a subtly different alignment from **502**, and was only 1.5m wide. It was at least 19.3m long, but there is no sign of it within Trench 8, which its projected alignment would cross. A small shallow slot dug into this feature did little but confirm it as a cut feature, although it is tentatively suggested that it was cut by **907**, the shallow pit containing Bronze Age pottery. If this interpretation is correct, this would make this an early prehistoric feature.

At the extreme NW end of Trench 1, the SE edge of a possible further linear feature **103** was recorded. This followed a different alignment, seeming to run approximately E/W and was at least 2.1m long and 0.9m wide. It is of course possible that **103** is part of a large pit.

2: Small, rounded features

Numerous small circular features were recorded across several trenches. Some of these may prove to be post-holes, and in some cases (especially in Trench 10) possible packing stones were noted. Some may of course be stone holes, or variations in the underlying natural.

Clusters of these features formed apparent linear arrangements in two cases, suggesting a common function. Within the SW end of Trench 10 three features (**1003**, **1004** and **1005**), all of which held possible packing stones, formed a line running NW/SE for 2.5m. Two further small features (**1006** and **1007**), to their SW, could more dubiously be suggested to form a right-angle coming off this.

At the SE end of Trench 13 a series of five (**1203**, **1204**, **1205**, **1206** and **1207**) features crossed the corner of the trench forming a line at least 3m long running NW/SE. Outside of these discrete arrangements little can be said of these features, although wider patterns might be discerned if larger areas were opened.

3: Small, amorphous

The category of small amorphous features is likely to have considerable overlap with the last category, with the perceived shape of an unexcavated feature owing much to its

preservation and definition. As with Category 3 (above) some of these are artificial, but some may well be natural in origin.

Generally, they represent a scatter of pits and/or post-holes across the field. The single excavated example, **906**, proved to have prehistoric, probably Bronze Age pottery within it. This sat in a shallow cut **907**, but is likely to have been truncated as it lay directly below the plough-soil. No evidence for human remains was noted, and it seemed likely that the pot had been deliberately smashed by the stones overlying it. This was tentatively interpreted as post-dating the linear feature **902**.

4: Large, rounded

Two large oval or sub-rounded features were noted, **510** and **1102**. Both were denoted by charcoal flecked mid-brown sandy silt. Context **1102** was larger, although it ran out of the trench (4m by at least 2.3m).

5: Curvilinear

A series of three features were recorded that curved or changed direction within the trench. Clipping the NE end of Trench 2, **206** was a short curving stretch of brown sandy silt some 0.75m wide. At the junction of trenches 8 and 9, **804** was a steeply curving feature 1.2m wide. Against the SW side of Trench 12, **1217** ran parallel to the trench edge for 3.7m (long) with a width of 0.35m. At both ends it curved to run out the trench, widening considerably at the SE end, where there may in fact be two separate features. All three of these were only partially exposed, but display a complexity of shape that suggests a structural function.

Not listed in any of these categories is the large spread of silt and stones **507** at the top of a small drop in the subsoil. This may be an accidental product of machining, with a stonier area of subsoil (possibly connected with the drop in ground level) proving hard to clean.

All these features were sealed by a plough soil of at least 0.3m depth, increasing to 0.45m towards the S centre of the field in Trench 10. This produced a small assemblage of sherds of glass and white china, suggesting agricultural activity in the last 150 years. In the NW corner of the field a thin deposit of more orangey sandy material was recorded under the plough soil. This could be a relic of an earlier plough soil, or possibly represent hill wash from the

slopes to the N. In either event it suggests the possibility of better preservation towards this corner of the field.

Some concordance with earlier work in this field can be achieved. Most obvious perhaps is the linear features towards the SW corner of the field. Feature 'A' in both the magnetometer and resistivity survey seems to match **512/ 902**. The apparent gap noted in this survey may explain why it was not recorded in Trench 8 - although it may continue to the SE of this.

The larger southern ditch is not so well represented, but both appear on the accompanying aerial photograph (Fig.2 and Fig.3), where both seem to continue into the field to the W. The northern feature seems to be heading roughly towards the apparent gap in the E side of the enclosure in the W field.

The large pit **1102** could correspond to one of the possible pits labelled as 'C' on the magnetometry plot, with **1008** as another possible example. The possibility exists that these, and also **510**, are related to the pit alignment recorded in the next field to the W.

It can be seen that this field contains a high density of archaeological features. The area is reasonably level and well drained, on the edge of poorer drained land to the S. As such it is likely to have been an attractive location for settlement as well as agriculture and possibly ritual for millennia. Indeed the proximity to the fossil shore line could push this usage back into a pre-agricultural milieu.

It is likely therefore that the remains encountered represent a palimpsest of features over a considerable time depth. The only securely dated feature produced pottery of a probable Bronze Age date. Some of these probably relate to the crop mark evidence, much of which is in the adjacent field. Parts of these at least would conventionally be assigned to the later prehistoric period, representing field boundaries and a probable settlement.

Later use of the field might include settlement associated with the Castle, and possibly works associated with the siege. Although much of the damage seems to have been inflicted on the S side of the Castle, the damp nature of this terrain suggests that this well drained field to the N would also have been used. It is possible that the large ditch **502**, with its overlying roof slate may relate to this.

REFERENCES

O'Grady O.J.T. (2008) 'Caerlaverock Castle, Dumfries and Galloway: Geophysical Evaluation.' Report for Historic Scotland.

O'Grady O.J.T. (2010) 'Caerlaverock Castle, Visitor Centre, Dumfries and Galloway: Geophysical Evaluation.' Report for Historic Scotland.

FIGURES

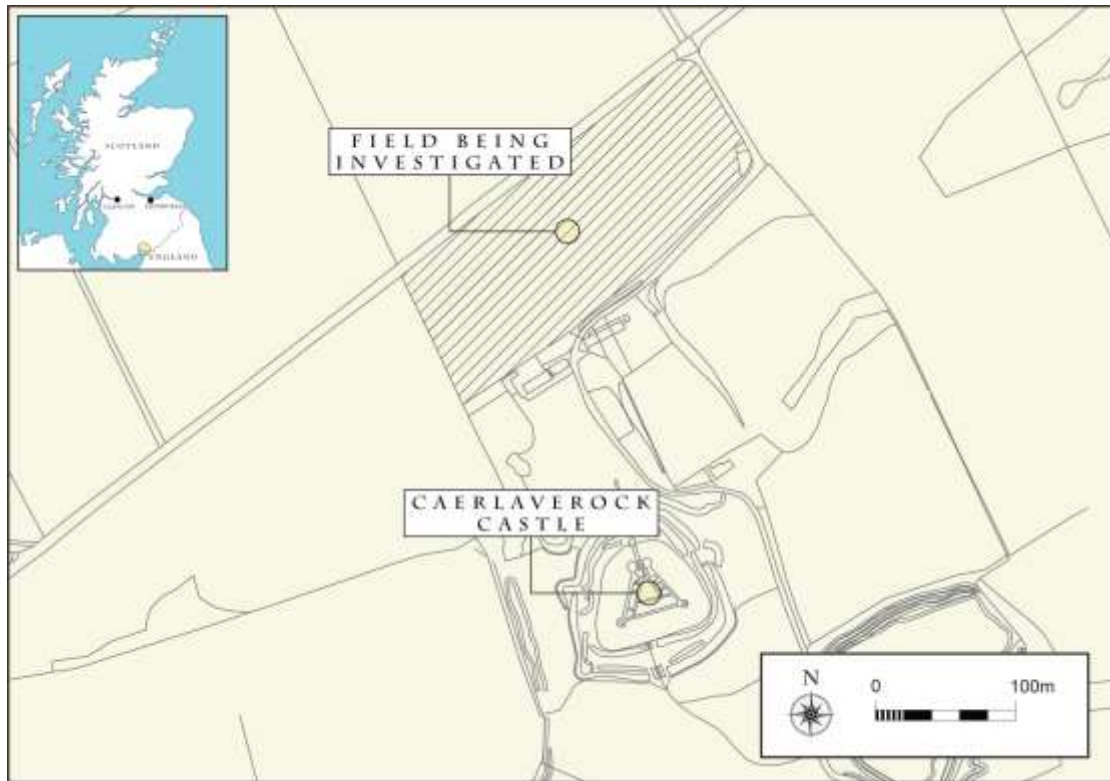


Fig.1: Location map showing the field near Caerlaverock Castle being excavated.



Fig.2: Detail of an aerial photograph showing the field being excavated (A) and crop-marks in the adjacent field(s) to the W. Photograph © RCAHMS.



Fig.3: Rectified aerial photograph (details) under plan of excavated trenches. Photograph © RCAHMS.

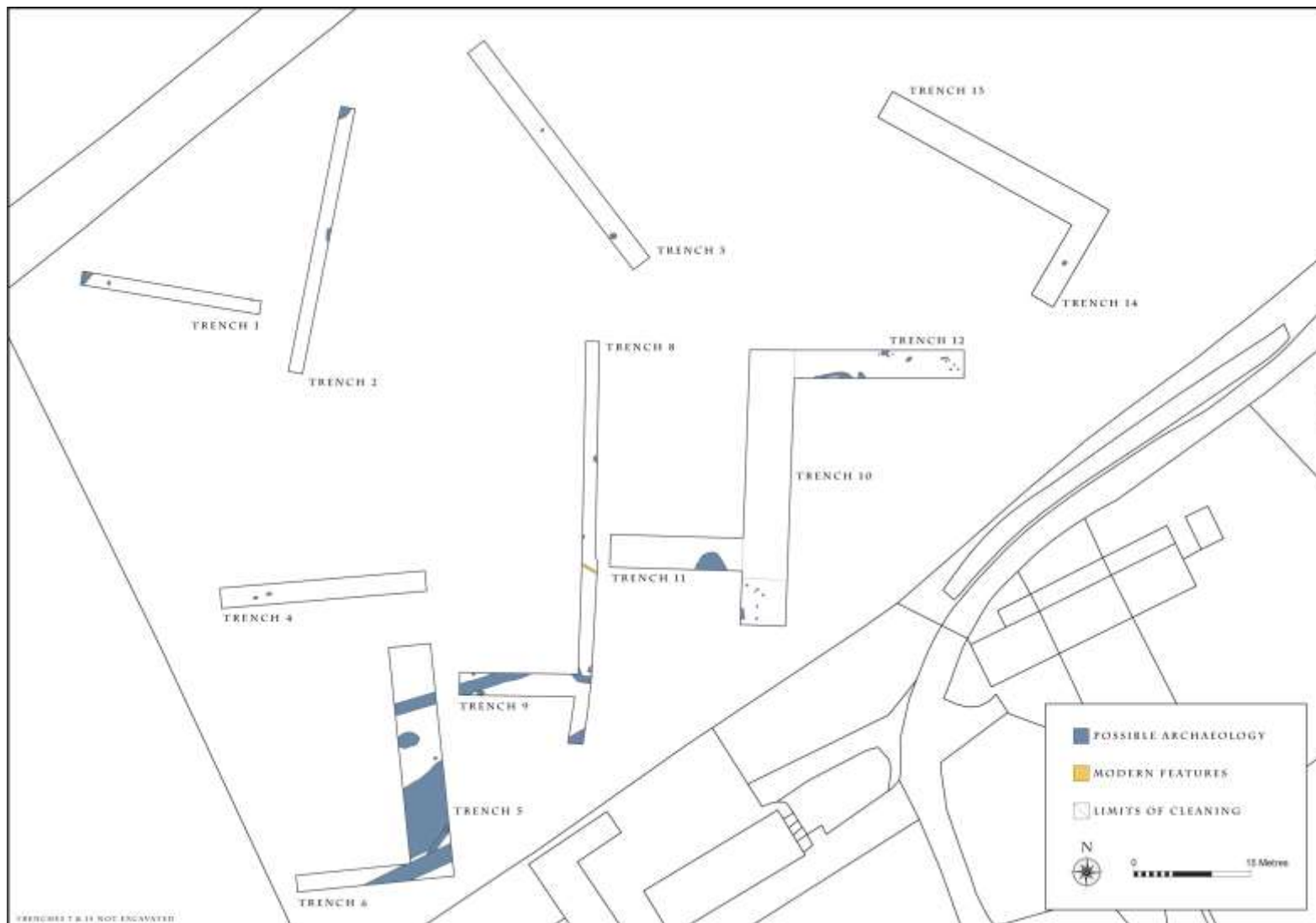
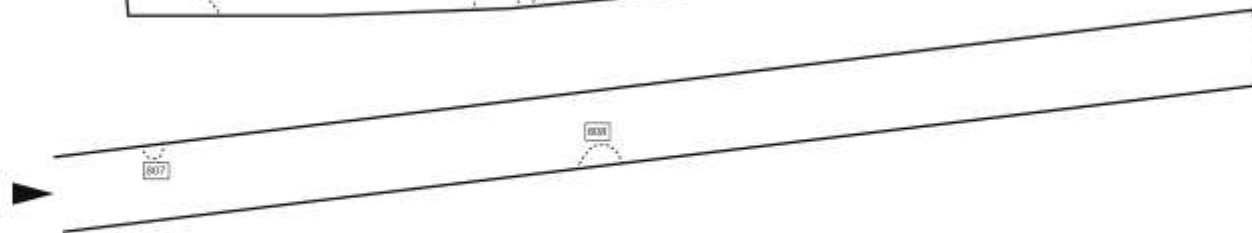
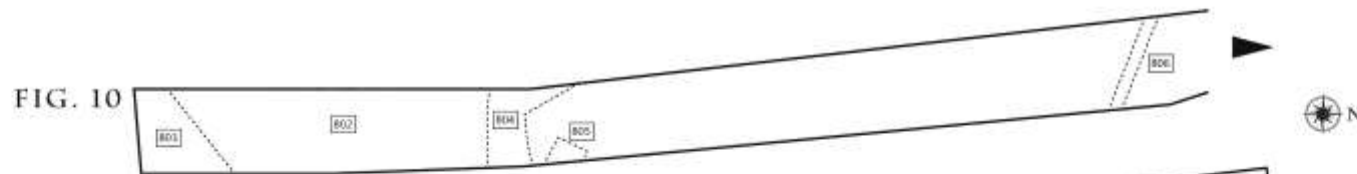


Fig.4: Post-excitation plan of trenches.



Figs. 5-8 & 10-11: Post-excavation trench plans.

FIG. 9



Fig. 9: Post-excavation trench plan.

FIG. 12



FIG. 13



FIG. 14

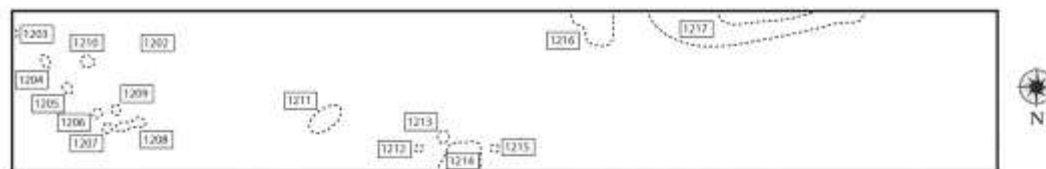


FIG. 15



FIG. 16



Figs. 12-16: Post-excavation trench plans.

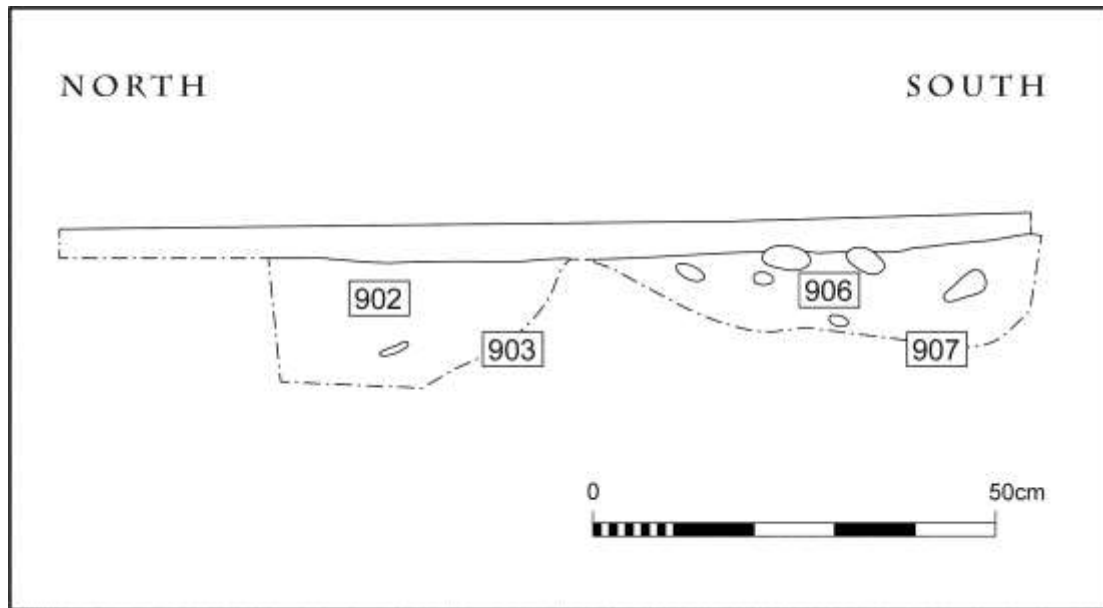


Fig.17: W-facing section in Trench 9.

LIST OF CONTEXTS

Trench 1

No.	Description
100	Topsoil
101	Mid-brown sandy silt plough soil
102	Orangey brown sandy silt below 101
103	Mid-brown sandy silt fill of 104
104	Cut running NE/SW in NW corner of trench
105	Mid-brown sandy silt fill of 106
106	Oval cut to SE of 104
107	Mid-brown sandy silt fill of 108
108	Small cut against NE side of trench at its SE end
109	Subsoil
110	Gravel lens between 100 and 101 at NW end of trench

Trench 2

No.	Description
200	Topsoil
201	Mid-brown sandy silt plough soil
202	Orangey brown sandy silt below 201
203	Mid-brown sandy silt fill of 204
204	Rectangular cut against the SE side of the middle of the trench
205	Subsoil
206	Compact mid-brown sandy silt fill of 207
207	Curving cut at NE end of trench

Trench 3

No.	Description
300	Topsoil
301	Mid-brown sandy silt plough soil
302	Subsoil
303	Charcoal rich mid-brown sandy silt fill of 305
304	Mid-brown sandy silt fill of 306
305	Sub-rounded cut towards SW end of trench
306	Sub-rounded cut near centre of trench

Trench 4

No.	Description
400	Topsoil
401	Mid-brown sandy silt plough soil
402	Subsoil
403	Mid-brown sandy silt fill of 405
404	Charcoal rich sandy silt fill of 406
405	Oval cut towards W end of trench
406	Amorphous cut to E of 405

Trench 5

No.	Description
500	Topsoil
501	Mid-brown sandy silt plough soil
502	Mid-brown sandy silt fill of 503 (same as 602)
503	Linear cut at SW end of trench (same as 603)
504	Mid-brown sandy silt fill of 506
505	Charcoal patch at NE end of 504
506	Linear NE/SW cut, running off the N side of 503
507	Spread of mid-grey silt and gravel
508	Charcoal rich dark grey silt fill of 509
509	Small circular cut near E side of trench
510	Dark brown sandy silt fill of 511
511	Large circular cut against W side of trench
512	Mid-brown silty clay fill of 513
513	Linear cut near N end of trench
514	Pale grey silty clay fill of 515
515	Circular cut to NE of 512
516	Lower stone fill of 503
517	Subsoil

Trench 6

No.	Description
600	Topsoil
601	Mid-brown sandy silt plough soil
602	Mid-brown sandy silt fill of 603 (same as 502)
603	Cut aligned approximately E/W (same as 503)
604	Subsoil

Trench 8

No.	Description
800	Topsoil
801	Mid-brown sandy silt plough soil
802	Subsoil
803	Mid-brown sandy silt fill of 809
804	Stone rich mid-brown sandy silt fill of 810
805	Mottled fill of 811 , mid-brown sandy silt and yellowish clay
806	Mid-brown silty fill of 812
807	Mid-brown silty clay fill of 813
808	Orangey sand fill of 814
809	Probable E/W cut at SW end of trench
810	Curving cut at junction of trenches 8 and 9
811	Possible cut to NE of 810
812	Narrow NW/SE cut approximately central to trench
813	Oval cut against NW side of trench
814	Sub-rounded cut against the SE side of the trench

Trench 9

No.	Description
900	Topsoil
901	Mid-brown sandy silt plough soil
902	Mid-brown sandy silt fill of 903 (same as 512)
903	Linear NW/SE cut at NW end of trench (same as 513)
904	Mid-brown sandy silt fill of 905
905	Circular cut against NE side of trench, at its NW end
906	Mid-brown sandy silt fill, rich in stone and pot, fill of 907
907	Cut against SW side of trench
908	Subsoil

Trench 10

No.	Description
1000	Topsoil
1001	Mid-brown sandy silt plough soil
1002	Subsoil
1003	Mid-brown silty sand fill of 1009
1004	Mid-brown sandy silt fill of 1010
1005	Stone and mid-brown sandy silt fill of 1011
1006	Mid-brown sandy silt fill of 1012
1007	Mid-brown sandy silt fill of 1013
1008	Mid-brown sandy silt fill of 1014
1009	Small circular cut to NW of cleaned area
1010	Small circular cut to SE of 1009
1011	Small circular cut to SE of 1010
1012	Small circular cut to S of 1011
1013	Small circular cut to S of 1012
1014	Large irregular possible cut against NW edge of the trench

Trench 11

No.	Description
1100	Topsoil
1101	Mid-brown sandy silt plough soil
1102	Mid-brown sandy silt fill of 1103
1103	Large circular cut against SW side of trench
1104	Subsoil

Trench 12

No.	Description
1200	Topsoil
1201	Mid-brown sandy silt plough soil
1202	Subsoil
1203	Mid-brown sandy silt fill of 1218
1204	Mid-brown sandy silt fill of 1219
1205	Mid-brown sandy silt fill of 1220
1206	Mid-brown sandy silt fill of 1221
1207	Mid-brown sandy silt fill of 1222
1208	Mid-brown sandy silt fill of 1223
1209	Mid-brown sandy silt fill of 1224
1210	Mid-brown sandy silt and yellow sand fill of 1225
1211	Mid-brown sandy silt and small stone fill of 1226
1212	Mid-brown sandy silt fill of 1227
1213	Mid-brown sandy silt fill of 1228
1214	Charcoal flecked mid-brown sandy silt fill of 1229
1215	Mid-brown sandy silt fill of 1230
1216	Mid-brown sandy silt and occasional stone fill of 1231
1217	Charcoal flecked mid-brown sandy silt and stone fill of 1232
1218	Small oval cut at SE end of trench
1219	Small oval cut to NW of 1218
1220	Small oval cut to NW of 1219
1221	Small oval cut to NW of 1220
1222	Small oval cut to NW of 1221
1223	Amorphous cut to W of 1222
1224	Roughly circular cut to S of 1223
1225	Small rounded cut to S of 1224
1226	Isolated roughly oval cut
1227	Roughly oval cut towards centre of the trench
1228	Oval cut to W of 1227
1229	Large part exposed cut against NE section, to NW of 1228
1230	Small oval possible cut to NW of 1229
1231	Amorphous cut against SW side of trench
1232	Linear cut along SW side of trench, to NW of 1231

Trench 14

No.	Description
1400	Topsoil
1401	Mid-brown sandy silt plough soil
1402	Mid-brown sandy silt fill of 1403
1403	Large circular cut roughly central to trench
1404	Subsoil

LIST OF DRAWINGS

No.	Type	Description	Scale
1	Plan	Trench 1	1: 50
2	Plan	Trench 4	1: 50
3	Plan	Trench 9	1: 50
4	Plan	Trenches 5 and 6	1: 50
5	Plan	Trench 2	1: 50
6	Plan	Trench 10	1: 50
7	Plan	Trench 14	1: 50
8	Plan	Trench 13	1: 50
9	Plan	Trench 3	1: 50
10	Plan	Trench 11	1: 50
11	Plan	Trench 12	1: 50
12	Plan	Trench 8	1: 50
13	Section	W facing section across cuts 903 and 907	1: 10
14	Plan	Detail of SW end of Trench 9	1: 20

LIST OF FINDS

Context	Description	Date
201	1 basal sherd of bowl. Buff coloured ware with brown glaze inside and out – post med. Maximum of 30mm x 35mm x 10mm thick.	01/03/11
501	2 sherds of white glazed china.	01/03/11
501	1 small sherd of possible stoneware	01/03/11
501	1 fragment of clay pipe stem – 22mm long x 4-5mm diameter	01/03/11
602	Stone roof slate fragment – schist, crudely worked. Approximately 150mm x 140mm x 15mm thick	02/03/11
906	Unknown number of sherds of prehistoric pot retrieved within bulk sample	04/03/11

LIST OF SAMPLES

No.	Context	Trench	Type	No. bags	Date
1	906	9	Initial clean over fill of pit 907	1	03/03/11
2	906	9	Fill of pit 907 (100%)	6	04/03/11

LIST OF DIGITAL PHOTOGRAPHS

No.	Description	From	Date
1	Trench 6 being opened	S	28/02/2011
2	Trench 6 fully opened	NW	28/02/2011
3	Trench 6, detail of SE end	NW	28/02/2011
4	Linear feature 502/ 602	NW	01/03/2011
5	Linear feature 502/ 602	NW	01/03/2011
6	Detail of 602	NW	01/03/2011
7	Detail of 602	NE	01/03/2011
8	Features 502/ 504	NW	01/03/2011
9	Features 502/ 504	NW	01/03/2011
10	Detail of 602	NE	01/03/2011
11	Linear feature 502/ 602	E	01/03/2011
12	General shot of Trench 5	SE	01/03/2011
13	Features 502/ 504	SW	01/03/2011
14	Trench 4 being opened	NW	01/03/2011
15	Trench 5 in the mist	NE	01/03/2011
16	Caerlaverock Castle	N	01/03/2011
17	Caerlaverock Castle	N	01/03/2011
18	Trench 1 being opened	S	01/03/2011
19	Trench 2 being opened	SW	01/03/2011
20	General shot of field	NW	01/03/2011
21	Trench 3 being opened	N	01/03/2011
22	Features 502/ 602 and 504	W	01/03/2011
23	Features 502/ 504	W	01/03/2011
24	Detail of 505	NE	01/03/2011
25	NE end of Trench 5/Trench 9 being opened	W	01/03/2011
26	Trench 9 being opened	W	01/03/2011
27	General shot of trenches 1-4	S	01/03/2011
28	SW end of Trench 5	NW	01/03/2011
29	Trench 5 to NE of last shot	NW	01/03/2011
30	Trench 5 to NE of last shot	NW	01/03/2011
31	Trench 5 to NE of last shot	NW	01/03/2011
32	Trench 5 to NE of last shot	NW	01/03/2011
33	Trench 5 to NE of last shot	NW	01/03/2011
34	Trench 10 as first exposed	S	02/03/2011
35	General view of Caerlaverock Castle	N	02/03/2011
36	Junction of trenches 10 and 11	SE	02/03/2011
37	General shot of Trench 1 as cleaned up	NW	02/03/2011
38	Detail of Trench 1, NW end	SW	02/03/2011
39	Detail of Trench 1, to SE of last shot	SW	02/03/2011
40	Detail of Trench 1, to SE of last shot	SW	02/03/2011
41	Detail of Trench 1, to SE of last shot	SW	02/03/2011
42	Detail of Trench 1, to SE of last shot	SW	02/03/2011

No.	Description	From	Date
43	Detail of Trench 1, to SE of last shot	SW	02/03/2011
44	Detail of Trench 1, to SE of last shot	SW	02/03/2011
45	Detail of Trench 1, to SE of last shot	SW	02/03/2011
46	Detail of 103	SE	02/03/2011
47	Detail of 105	SW	02/03/2011
48	Detail of 107	SW	02/03/2011
49	General shot of Trench 2 cleaned up	SW	02/03/2011
50	Detail of Trench 2, SW end	SE	02/03/2011
51	Detail of Trench 2, to NE of last shot	SE	02/03/2011
52	Detail of Trench 2, to NE of last shot	SE	02/03/2011
53	Detail of Trench 2, to NE of last shot	SE	02/03/2011
54	Detail of Trench 2, to NE of last shot	SE	02/03/2011
55	Detail of Trench 2, to NE of last shot	SE	02/03/2011
56	Detail of Trench 2, to NE of last shot	SE	02/03/2011
57	Detail of Trench 2, to NE of last shot	SE	02/03/2011
58	Detail of Trench 2, to NE of last shot	SE	02/03/2011
59	Detail of Trench 2, to NE of last shot	SE	02/03/2011
60	Detail of 203	NW	02/03/2011
61	Detail of 206	SE	02/03/2011
62	Detail of 206	SE	02/03/2011
63	Castle behind Trench 10	N	02/03/2011
64	Trench 12, general shot	NW	02/03/2011
65	Junction of features 502 and 504 cleaned up	SW	02/03/2011
66	Junction of features 502 and 504 cleaned up	SW	02/03/2011
67	Junction of features 502 and 504 cleaned up	SW	02/03/2011
68	Junction of features 502 and 504 cleaned up	SW	02/03/2011
69	Slate in top of 602	SE	02/03/2011
70	Detail of 507	SE	02/03/2011
71	Detail of 508	SE	02/03/2011
72	Detail of 510	SE	02/03/2011
73	Detail of 510	SE	02/03/2011
74	Detail of 512	SE	02/03/2011
75	Detail of 512	NW	02/03/2011
76	Detail of 512 , showing continuation into Trench 9	NW	02/03/2011
77	Detail of 514	SE	02/03/2011
78	General shot of trenches	E	03/03/2011
79	General shot of trenches	E	03/03/2011
80	General shot of trenches and Caerlaverock Castle	N	03/03/2011
81	General shot of trenches	NE	03/03/2011
82	General shot of trenches and Caerlaverock Castle	NW	03/03/2011
83	General shot of Trench 8	N	03/03/2011
84	General shot of Trench 12	W	03/03/2011
85	Linear feature 903 and pit 906	NE	03/03/2011
86	Detail of pit 906	NE	03/03/2011

No.	Description	From	Date
87	Detail of pit 906	NE	03/03/2011
88	Detail of pit 906, showing pottery	NE	03/03/2011
89	Detail of pit 906, showing pottery	NE	03/03/2011
90	Detail of pit 906, showing pottery	NE	03/03/2011
91	Cut 503, with lower fill 516 exposed	SE	03/03/2011
92	Cut 503, with lower fill 516 exposed	SE	03/03/2011
93	Cut 503, with lower fill 516 exposed	SE	03/03/2011
94	Cut 503, with lower fill 516 exposed	NW	03/03/2011
95	Cut 503, with lower fill 516 exposed	NW	03/03/2011
96	Cut 503, with lower fill 516 exposed	NW	03/03/2011
97	General shot of Trench 12	SE	03/03/2011
98	Detail of Trench 12, SE end	NE	03/03/2011
99	Detail of Trench 12, to NW of last shot	NE	03/03/2011
100	Detail of Trench 12, to NW of last shot	NE	03/03/2011
101	Detail of Trench 12, to NW of last shot	NE	03/03/2011
102	Detail of Trench 12, to NW of last shot	NE	03/03/2011
103	Detail of Trench 12, to NW of last shot	NE	03/03/2011
104	Detail of Trench 12, to NW of last shot	NE	03/03/2011
105	Detail of Trench 12, to NW of last shot	NENE	03/03/2011
106	Detail of Trench 12, to NW of last shot	NE	03/03/2011
107	Detail of Trench 12, to NW of last shot	NE	03/03/2011
108	Soil profile of Trench 12, SW facing section	SW	03/03/2011
109	Feature 1203	NW	03/03/2011
110	Feature 1204	NW	03/03/2011
111	Feature 1205	NW	03/03/2011
112	Pit 907 with fill 906 part excavated	NE	03/03/2011
113	Pit 907 with fill 906 part excavated	NE	03/03/2011
114	Feature 1207	NW	03/03/2011
115	Feature 1208	SW	03/03/2011
116	Feature 1209	NW	03/03/2011
117	Feature 1210	NW	03/03/2011
118	Feature 1211	NE	03/03/2011
119	Feature 1212	SW	03/03/2011
120	Feature 1213	SW	03/03/2011
121	Feature 1214	SW	03/03/2011
122	Half section across pit cut 907	NE	03/03/2011
123	Half section across pit cut 907	SE	03/03/2011
124	Decorated pot shard from 906	-	03/03/2011
125	Decorated pot shard from 906	-	03/03/2011
126	Decorated pot shard from 906	-	03/03/2011
127	General shot of Trench 11	NW	03/03/2011
128	Detail of Trench 11, NW end	NE	03/03/2011
129	Detail of Trench 11, to SE of last shot	NE	03/03/2011
130	Detail of Trench 11, to SE of last shot	NE	03/03/2011

No.	Description	From	Date
131	Detail of Trench 11, to SE of last shot	NE	03/03/2011
132	Fill 1102 cleaned up	NE	03/03/2011
133	Fill 1102 cleaned up	NE	03/03/2011
134	Feature 1215	SW	03/03/2011
135	Feature 1216	NE	03/03/2011
136	Feature 1217 , detail of SE end	NE	03/03/2011
137	Feature 1217 , detail of SE end	NE	03/03/2011
138	Feature 1217	NW	03/03/2011
139	Half section of 907 and partial section of 903	NW	04/03/2011
140	Half section of 907 and partial section of 903	NW	04/03/2011
141	Detail of NW facing section of 907	NW	04/03/2011
142	Detail of NW facing section of 903	NW	04/03/2011
143	Trenches 1 and 2 backfilled	W	04/03/2011
144	General shot of site	NW	04/03/2011
145	General shot of site	NW	04/03/2011
146	Feature 512/ 902 crossing trenches 5 and 9	NW	04/03/2011
147	General shot of Trench 9	NW	04/03/2011
148	General shot of Trench 9	NW	04/03/2011
149	General shot of Trench 9	SE	04/03/2011
150	Detail of Trench 9, SE end	SW	04/03/2011
151	Detail of Trench 9 to NW of last shot	SW	04/03/2011
152	Detail of Trench 9 to NW of last shot	SW	04/03/2011
153	Detail of Trench 9 to NW of last shot	SW	04/03/2011
154	Detail of Trench 9 to NW of last shot	SW	04/03/2011
155	Feature 902	W	04/03/2011
156	Feature 904	SW	04/03/2011
157	General shot of Trench 14	SW	04/03/2011
158	Detail of Trench 14, SW end	SE	04/03/2011
159	Detail of Trench 14, to NE of last shot	SE	04/03/2011
160	Detail of Trench 14, to NE of last shot	SE	04/03/2011
161	Detail of Trench 14, to NE of last shot	SE	04/03/2011
162	Feature 1402	SE	04/03/2011
163	General shot, SW end of Trench 8	SE	04/03/2011
164	Trench 8, to NE of last shot	SE	04/03/2011
165	Trench 8, to NE of last shot	SE	04/03/2011
166	Trench 8, to NE of last shot	SE	04/03/2011
167	Trench 8, to NE of last shot	SE	04/03/2011
168	Possible ditch 803	SW	04/03/2011
169	Possible ditch 803	NW	04/03/2011
170	Curved feature 804	SE	04/03/2011
171	Curved feature 804 and possible pit 805	E	04/03/2011
172	Pit 805	SE	04/03/2011
173	Topsoil profile of Trench 8 in SE section	NW	04/03/2011
174	Shot of Trench 10 cleaned	SW	04/03/2011

No.	Description	From	Date
175	Detail of cleaned SW end of Trench 10	SE	04/03/2011
176	Detail of cleaned SW end of Trench 10	SE	04/03/2011
177	Possible post hole 1003	SW	04/03/2011
178	Possible post hole 1004	SW	04/03/2011
179	Possible post hole 1005	SW	04/03/2011
180	Possible post hole 1006	SW	04/03/2011
181	Possible post hole 1007	SW	04/03/2011
182	Possible post hole 1008	SW	04/03/2011
183	Topsoil profile of Trench 10 in NW section	SE	04/03/2011
184	Trench 8, continued from shot 167	SE	04/03/2011
185	Trench 8, to NE of last shot	SE	04/03/2011
186	Trench 8, to NE of last shot	SE	04/03/2011
187	Trench 8, to NE of last shot	SE	04/03/2011
188	Trench 8, to NE of last shot	SE	04/03/2011
189	Trench 8, to NE of last shot	SE	04/03/2011
190	Trench 8, to NE of last shot	SE	04/03/2011
191	Possible pit 807	SE	04/03/2011
192	Possible pit 808	NW	04/03/2011
193	Trench 8, continued from shot 190	SE	04/03/2011
194	Trench 8, to NE of last shot	SE	04/03/2011
195	Trench 8, to NE of last shot	SE	04/03/2011
196	Trench 8, to NE of last shot	SE	04/03/2011
197	Trench 8, to NE of last shot	SE	04/03/2011
198	Trench 8, to NE of last shot	SE	04/03/2011
199	Trench 8, to NE of last shot	SE	04/03/2011
200	Trench 8, to NE of last shot	SE	04/03/2011
201	Trench 8, to NE of last shot	SE	04/03/2011
202	Trench 8, to NE of last shot	SE	04/03/2011
203	Trench 8, to NE of last shot	SE	04/03/2011
204	Trench 3 cleaned up	SW	04/03/2011
205	Topsoil profile of Trench 3	SE	04/03/2011
206	Possible pit 303	SE	04/03/2011
207	Possible pit 304	SE	04/03/2011
208	Trench 4 cleaned up	NE	04/03/2011
209	Possible pits 403 and 404	NE	04/03/2011
210	Possible pit 403	NE	04/03/2011
211	Possible pit 404	NE	04/03/2011
212	Trench 8 cleaned up	SW	04/03/2011
213	Trench 4 topsoil profile	NE	04/03/2011
214	Fill 906 mostly removed, showing pottery	NE	07/03/2011
215	Fill 906 mostly removed, showing pottery	NE	07/03/2011
216	Fill 906 mostly removed, showing pottery	NE	07/03/2011
217	Fill 906 , detail of pot on S side of feature	NE	07/03/2011
218	Fill 906 , detail of pot on NE side of feature	NE	07/03/2011

No.	Description	From	Date
219	Fill 906, detail of pot on NE side of feature	SW	07/03/2011
220	Fill 906, detail of large inverted rim shard	W	07/03/2011
221	Fill 906 detail of pot on NE side	NW	07/03/2011
222	Fill 906, detail of large inverted rim shard	S	07/03/2011
223	Fill 906, detail of large inverted rim shard	S	07/03/2011
224	Fill 906, detail of large inverted rim shard after removal from pit	-	07/03/2011
225	Fill 906, detail of large inverted rim shard after removal from pit	-	07/03/2011
226	Cut 907 fully emptied	NE	07/03/2011
227	Cut 907 fully emptied	NE	07/03/2011