

---

# ABB EY S T R A N D

---

ARCHAEOLOGICAL SURVEY

*and*

HISTORICAL RESEARCH

*on behalf of*

ROYAL COLLECTION ENTERPRISES LTD.



VOLUME II

DECEMBER 2011

KIRKDALE

ARCHAEOLOGY

4 WESTERN TERRACE · MURRAYFIELD · EDINBURGH · EH12 5QF

# ABB EY S T R A N D

ARCHAEOLOGICAL SURVEY

*and*

HISTORICAL RESEARCH

*on behalf of*

ROYAL COLLECTION ENTERPRISES LTD.



ARCHAEOLOGY

4 WESTERN TERRACE · MURRAYFIELD · EDINBURGH · EH12 5QF

## Contents

### Volume I

1	Introduction.....	1
1.1	<i>Acknowledgements</i> .....	11
2	Abbey Strand History.....	12
2.1	<i>Abstract</i> .....	12
2.2	<i>Introduction</i> .....	12
2.3	<i>House of the Hospital of St Leonard 1490 - 1570</i> .....	12
2.4	<i>The Renaissance Mansion 1570 - 1630</i> .....	15
2.5	<i>Seventeenth Century Prosperity 1630 - 1700</i> .....	17
2.6	<i>Tenement and Ale Houses 1700 - 1916</i> .....	19
2.7	<i>Restoration 1916</i> .....	26
2.8	<i>Ministry and Palace: Tourism and Tearoom 1935 - 1963</i> .....	29
2.9	<i>Further Conversion 1963 - 1999</i> .....	32
3	Periodisation.....	33
3.1	<i>Introduction</i> .....	33
3.2	<i>Periodised plans and elevations</i> .....	33
3.3	<i>Period 1</i> .....	47
3.4	<i>Period 2</i> .....	51
3.5	<i>Period 3</i> .....	57
3.6	<i>Period 4</i> .....	66
3.7	<i>Period 5</i> .....	77
3.8	<i>Period 6</i> .....	89
3.9	<i>Period 7</i> .....	100
4	Discussion and Analysis.....	121
4.1	<i>Executive Summary: Form and function</i> .....	122
5	Sources.....	127
6	Glossary.....	138

## Contents

### *Volume II*

A1	Appendix 1: The Structural Timbers.....	140
----	---	-----

### *Volume III*

A2	Appendix 2: The Mouldings.....	361
A3	Appendix 3: Sampling.....	367
A4	Appendix 4: Graphics.....	372
A5	Appendix 5: Photographic Record.....	378
A6	Appendix 6: Drawings.....	380
A7	Appendix 7: Context Register.....	389



## **A1 Appendix 1: The Structural Timbers (Thorsten Hänke)**

The accessible<sup>1</sup> roofs and ceilings over the three principal building parts of Abbey Strand (Western Main Building, Kitchen/Lobby-Range, N/S-Range) should be regarded as typical examples of Scottish structural carpentry of the period between the late 16th and early 20th centuries. Displaying a variety of tool - and assembly marks, and showing a wide range of construction details, the roofs and ceilings are not only a rich primary source for research into Scottish historic carpentry, but also an essential tool for decoding the architectural evolution of Abbey Strand. The importance of these timber features lies in the possibility that its dendrochronological dating could establish the exact felling dates of some of the trees (and thus the identification of important building campaigns).<sup>2</sup> In addition, the typology of the used material and joints naturally reflects technological progress, thus offering ample opportunities for attributing individual items to certain historical periods.

Both the oldest and youngest specimen of historically relevant<sup>3</sup> timber can be found at the Western Main Building. In particular, the ceiling over the Pend (Fig. A1-1) has a huge potential for illuminating the early history of Abbey Strand. Consisting of

---

<sup>1</sup> These spaces are identifiable under the following component numbers: 019 (pend of western building); 028 (ceiling at the first floor of the entrance lobby of the eastern building); 128 (attic of western building); 129 (attic over the northeastern part of the eastern building); 130 (attic over the southeastern part of the eastern building); 131 (attic over the western part of the eastern building) and 132 (attic over the southwestern part of the eastern building). Due to inaccessibility, it was not possible to record any items in component 131 (attic over the southern part of the eastern building). Excluded were furthermore the ceilings over the Midhope Room (this is not original to the building) and the Historic Scotland shop at the ground floor of the eastern part of the eastern building due to the frequent presence of customers and visitors.

<sup>2</sup> Potentially interesting are in particular the ceiling joists over the pend and the wall-plates in the southeastern part of the east range. Several beams used in these spaces show high quality timber and dendrochronological research could significantly enhance our understanding of the making of Abbey Strand.

<sup>3</sup> The term 'historically relevant' here refers to everything apart from timber belonging to obviously recent periods. Timbers that could unequivocally identified as being of late 20th-century origin were not included in the database.

relatively short yet solid oak joists, which are set at an average distance of ca. 500 mm, the structural details of the ceiling differ between its northern and southern extremities and hence clearly reflect the obvious northward-extension of the Western Main Block. This extension turned the edifice from a relatively narrow architectural unit into a fairly wide one, calling for a roof which had to employ unusually long construction components. Given the typical cross-sections of Scottish late - and post-medieval roofs,<sup>4</sup> as well as the poor availability of high quality timber during this period,<sup>5</sup> it is unlikely that the current roof typologically resembles the roof that had originally existed over the Western Main Building. Although this structure has entirely vanished, it is possible to say that it may have resembled the extant roofs over the Kitchen/Lobby-Range and the southern part of the N/S-Range, and both features are attributable to the late 16th and early 17th centuries.

The roof currently bridging the Western Main Building shows structural details typical of Scottish architecture from the early 19th century onwards, for example those found over industrial buildings such as steadings and warehouses. This earliest credible date-attribution for the main block roof is further suggested by the toolmarks (in its majority regular vertical saw kerbs) ascertainable on the rafters and the collarbeams which identify the timber as being machine-cut, a technique that was increasingly used in Scotland from the 1820s onwards.<sup>6</sup> Remarkable, however, is the fact that the

---

<sup>4</sup> For medieval and post-medieval Scottish roofs, see T. Ruddock, 'Repair of two important early Scottish roof structures', in *Proceedings of the Institution of Civil Engineers*, vol. 110, 1995, pp. 296-307 and A. Crone, N. Grieve, K. Moore and D. R. Perry, 'Investigations into an early timber-frame roof in Brechin, Angus', *Tayside and Fife Archaeological Journal*, vol. 10, Perth, 2004, pp. 152-65.

<sup>5</sup> A. Crone and C. M. Mills, 'Seeing the wood and the trees: dendrochronological studies in Scotland', *Antiquity*, vol. 76, September, 2002, pp. 788-94.

<sup>6</sup> The material could certainly have been cut in countries such the Netherlands or Norway where water-driven saw mills were introduced earlier than in Scotland and England. The beams, however, show imperial measures and thus are more likely to have been produced within the United Kingdom. For the introduction of sawmills in Britain, see E. W. Cooney, 'Eighteenth century Britain's missing sawmills: a blessing in disguise', *Construction History*, vol. 7, 1991, pp. 29-46; H. Louw, 'The mechanisation of architectural woodwork in Britain from the late-eighteenth to the early twentieth

employed collarbeams show different construction patterns at their north- and south ends (Figs. A1-2 and A1-3), suggesting that at least a part of the northern and southern joints were prepared at different construction stages. It seems, therefore, that the current roof was constructed comparatively late, partially reusing material that may have stemmed from an earlier roof structure of a similar shape.

The adjoining roof over the Kitchen/Lobby-Range represents the most intriguing roof structure over Abbey Strand, and it doubtlessly offers an insight into the complex evolution of the architectural structures east of the main block. Comprising three individual units, which are all marked with Roman numerals (Fig. A1-4), the roofs belong to a type that was once ubiquitous in post-medieval Scotland. It, however, develops an architecture that reflects the typical urban typology of the Royal Mile,<sup>7</sup> establishing the link between Palace, Monastery and Town. It is therefore a structure with an eminent historic value.

Material showing the same characteristics was used for the construction of the roof over the southern part of the N/S-Range. Typologically resembling the roof over the Kitchen/Lobby-Range, this unit also originates in the post-medieval period, while the adjacent roof over the northern part of the same architectural unit comprises just one historically relevant truss. This (rather enigmatic item) shows dimensions and structural details typical of post-medieval features. Its isolation within the remaining structure,<sup>8</sup> however, suggests that it had been reused from a different roof.<sup>9</sup>

---

century, and its practical, social and aesthetic implications, part I: the period c. 1790 to c. 1860', *Construction History*, vol.8, 1992, pp. 21-54.

<sup>7</sup> Typically the buildings facing the Royal Mile possess a sequence of small double-pitched gables, often supported by timber posts or projecting joists. It would be most intriguing to establish to what degree Abbey Strand fitted this pattern as well, asking in particular whether the current stone façade may have replaced a jettied or half-timbered structure.

<sup>8</sup> The entire roof structure is of 20th century date.

<sup>9</sup> This evidently happened to the ceiling over the Midhope Room and it may have happened in the attic over the northeastern part of Abbey Strand as well.

The structural details of the roofs over the eastern parts of Abbey Strand (Kitchen/Lobby-Range and N/S-Range), particularly the joints and the scantling, as well as the materials used here, thus suggest an erection date close to the 17th century. Both structures were repeatedly subject to repair and restoration. During this process, all three roof-units over the Kitchen/Lobby-Range have lost a large number of collarbeams (Fig. A1-5), as well as the original ceilings. The extant lath-and-plaster ceiling is attached to machine-sawn joists that show a dimension typical for the 19th and early 20th centuries, proving that a major overhaul happened at this time.



**Figure A1-1:** Ceiling over the southern part of the Pend. The joists consist of high quality oak and it is very likely that they could be dated dendrochronologically. This would establish a construction-date for the southern part of the main block.





**Figure A1-2:** Joint between collarbeam and southern rafter over the main block. The collarbeam is attached to the lateral face of the rafter using bolts that can be found in all the other roofs at Abbey Strand.



**Figure A1-3:** Joint between collarbeam and northern rafter over the main block. The collarbeam sits in the structural axis of the rafter, thus differing from the solution visible in Fig. 2.





**Figure A1-4:** Rafter belonging to the roof over the kitchen. Being marked with Roman numerals, the beam shows at its underside handmade nails as well as residuals of a lath-and-plaster ceiling, proving that the space had some sort of residential function.



**Figure A1-5:** Rafter and collarbeam belonging to the roof over the kitchen. The first rafter from the left shows an empty mortise which belongs to a formerly existing collarbeam. The latter was removed when new machine-cut beams were introduced together with the extant lath-and-plaster ceiling.



# 128001-004

## Truss 1

Item	Cross-sectional Dimension	Assembly Marks	Tool Marks	Redundant Features	Fixings
Rafter (North, 001) <sup>1</sup>	70 x 170 mm	None	Machine-sawn (vertical kerbs)	Lath and Plaster Marks	Probably Nails <sup>2</sup>
Rafter (South, 002) <sup>3</sup>	30 x 170 mm	None	Machine-sawn (vertical kerbs); adzed	None	Not ascertainable
Collar-beam (North, 003)	60 x 202 mm	None	Machine-sawn (vertical kerbs)	Handmade nails (top, both sides)	Probably Nails <sup>4</sup>
Collar-beam (South, 004)	25 x 180 mm	None	Machine-sawn (vertical kerbs)	Handmade nails (top, both sides)	Not ascertainable



**Fig. 128-1**  
View from northeast showing southern rafter (002) and southern collar-beam (004) of truss 1 (first couple from left).

<sup>1</sup> Rafter meets counter-rafter over ridge-purlin.

<sup>2</sup> Likely but not ascertainable.

<sup>3</sup> The bottom fifth of rafter 002 is cut off and the rafter does not join collar-beam 002. It is linked via a trimmer to rafter 006 and meets a ridge-purlin at the apex.

<sup>4</sup> Likely but not ascertainable.



# 128005-007

## Truss 2

Item	Cross-sectional Dimension	Assembly Marks	Tool Marks	Redundant Features	Fixings
Rafter (North, 005) <sup>5</sup>	60 x 165 mm	None	Machine-sawn (vertical kerbs)	Lath and Plaster Marks	Probably Nails <sup>6</sup>
Rafter (South, 006) <sup>7</sup>	65 x 170 mm	None	Machine-sawn (vertical kerbs); adzed	None	Bolts
Collar-beam (007) <sup>8</sup>	63 x 220 mm	None	Machine-sawn (vertical kerbs)	Handmade nails (top, both sides)	Probably Nails <sup>9</sup> Bolts



**Fig. 128-2**  
View from northeast showing southern rafter (005) and collar-beam (006) of truss 2 (third couple from right).

<sup>5</sup> Rafter meets counter-rafter over ridge-purlin.

<sup>6</sup> Likely but not ascertainable.

<sup>7</sup> Rafter meets counter-rafter over ridge-purlin.

<sup>8</sup> Collar-beam 006 is linked by a trimmer to collar-beam 010.

<sup>9</sup> Likely but not ascertainable

# 128008-010

## Truss 3

Item	Cross-sectional Dimension	Assembly Marks	Tool Marks	Redundant Features	Fixings
Rafter (North, 008) <sup>10</sup>	60 x 165 mm	None	Machine-sawn (vertical kerbs)	Lath and Plaster Marks	Probably Nails <sup>11</sup>
Rafter (South, 009) <sup>12</sup>	63 x 170 mm	None	Machine-sawn (vertical kerbs); adzed	None	Bolts
Collar-beam (010)	73 x 220 mm	None	Machine-sawn (vertical kerbs)	Handmade nails (top, both sides)	Probably Nails <sup>13</sup> Bolts



**Fig. 128-3**

View from east showing northern and southern rafters (008 and 009) of truss 3 (third couple from gable wall).

<sup>10</sup> Rafter meets counter-rafter over ridge-purlin.

<sup>11</sup> Likely but not ascertainable.

<sup>12</sup> Rafter meets counter-rafter over ridge-purlin.

<sup>13</sup> Likely but not ascertainable.

**128011**  
Trusses 2 and 3

Item	Cross-sectional Dimension	Assembly Marks	Tool Marks	Redundant Features	Fixings
Trimmer (North, 011)	See Fig. 128-4	None	Not ascertained	None	Not ascertained



**Fig. 128-4**  
View from northeast showing trimmer (011) between collar-beams (007 and 010) of trusses 2 and 3 (first two couples from left).

# 128012-014

## Truss 4

Item	Cross-sectional Dimension	Assembly Marks	Tool Marks	Redundant Features	Fixings
Rafter (North, 012) <sup>14</sup>	58 x 165 mm	None	Machine-sawn (vertical kerbs)	Lath and Plaster Marks	Probably Nails <sup>15</sup>
Rafter (South, 013) <sup>16</sup>	63 x 165 m	None	Machine-sawn (vertical kerbs); adzed	None	Bolts
Collar-beam (014)	63 x 220 mm	None	Machine-sawn (vertical kerbs)	Handmade nails (top, both sides)	Probably Nails <sup>17</sup> Bolts



**Fig. 128-5**  
View from northeast showing collar-beam (014) and southern rafter (013) of truss 4 (second couple from right).

<sup>14</sup> Rafter meets counter-rafter over ridge-purlin.

<sup>15</sup> Likely but not ascertainable

<sup>16</sup> Rafter meets counter-rafter over ridge-purlin.

<sup>17</sup> Likely but not ascertainable

**128015-17**  
Truss 5

Item	Cross-sectional Dimension	Assembly Marks	Tool Marks	Redundant Features	Fixings
Rafter (North, 015) <sup>18</sup>	62 x 168 mm	None	Machine-sawn (vertical kerbs)	Lath and Plaster Marks	Probably Nails <sup>19</sup>
Rafter (South, 016) <sup>20</sup>	62 x 168 mm	None	Machine-sawn (vertical kerbs)	Lath and Plaster Marks	Not ascertainable <sup>21</sup>
Collar-beam (017)	67 x 220 mm	None	Machine-sawn (vertical kerbs)	Handmade nails (top, both sides)	Probably Nails <sup>22</sup>



**Fig. 128-6**  
View from northeast showing collar-beam (017) and southern rafter (016) of truss 5 (first couple from right).

<sup>18</sup> Rafter and counter-rafter do not meet over ridge-purlin.

<sup>19</sup> Likely but not ascertainable.

<sup>20</sup> Rafter and counter-rafter do not meet over ridge-purlin.

<sup>21</sup> Rafter and collar-beam are not connected. The latter meets a trimmer instead.

<sup>22</sup> Likely but not ascertainable.



# 128018-20

## Truss 6

Item	Cross-sectional Dimension	Assembly Marks	Tool Marks	Redundant Features	Fixings
Rafter (North, 018) <sup>23</sup>	60 x 162 mm	None	Machine-sawn (vertical kerbs)	Lath and Plaster Marks	Probably Nails <sup>24</sup>
Rafter (South, 019) <sup>25</sup>	63 x 168 mm	None	Machine-sawn (vertical kerbs)	None	Not ascertainable <sup>26</sup>
Collar-beam (020)	65 x 220 mm	None	Machine-sawn (vertical kerbs)	Handmade nails (top, both sides)	Probably Nails <sup>27</sup>



**Fig. 128-7**  
View from south showing collar-beam (020) and northern rafter (018) of truss 6 (sixth couple from right).

<sup>23</sup> Rafter and counter-rafter do not meet over ridge-purlin.

<sup>24</sup> Likely but not ascertainable.

<sup>25</sup> Rafter and counter-rafter do not meet over ridge-purlin.

<sup>26</sup> Rafter and collar-beam are not connected. The latter meets a trimmer instead.

<sup>27</sup> Likely but not ascertainable.

**128021-24**

## Truss 7

Item	Cross-sectional Dimension	Assembly Marks	Tool Marks	Redundant Features	Fixings
Rafter (North, 021) <sup>28</sup>	60 x 162 mm	None	Machine-sawn (vertical kerbs), adzed	Lath and Plaster Marks	Probably Nails <sup>29</sup>
Rafter (South, 022) <sup>30</sup>	63 x 170 mm	None	Machine-sawn (vertical kerbs)	None	Not ascertainable <sup>31</sup>
Collar-beam (North, 023)	65 x 220 mm	None	Machine-sawn (vertical kerbs)	Handmade nails (top, both sides)	Probably Nails <sup>32</sup>
Collar-beam (South, 024)	52 x 200 mm	None	Machine-sawn (vertical kerbs)	Handmade nails (top)	Not ascertainable <sup>33</sup>



**Fig. 128-8**  
View from northeast showing joint of collar-beams (023 and 024) of truss 7 (second couple from right).

<sup>28</sup> Rafter and counter-rafter do not meet over ridge-purlin.

<sup>29</sup> Likely but not ascertainable.

<sup>30</sup> Rafter and counter-rafter do not meet over ridge-purlin.

<sup>31</sup> Rafter and collar-beam are not connected. The latter meets a trimmer instead.

<sup>32</sup> Likely but not ascertainable.

<sup>33</sup> Rafter and collar-beam are not connected. The latter meets a trimmer instead.

**128025-28**  
Truss 8

Item	Cross-sectional Dimension	Assembly Marks	Tool Marks	Redundant Features	Fixings
Rafter (North, 025) <sup>34</sup>	68 x 160 mm	None	Machine-sawn (vertical kerbs)	Lath and Plaster Marks	Probably Nails <sup>35</sup>
Rafter (South, 026) <sup>36</sup>	75 x 175 mm	None	Machine-sawn (vertical kerbs)	None	Bolts
Collar-beam (027) <sup>37</sup>	60 x 220 mm	None	Machine-sawn (vertical kerbs)	Handmade nails (top, both sides)	Probably Nails <sup>38</sup> Bolts
Board (028) <sup>39</sup>	See Fig.9	None	Not ascertained	None	Not ascertained



**Fig. 128-9**  
View from south showing collar-beam (027) and northern rafter (025) of truss 8 (eighth couple from right).

<sup>34</sup> Rafter and counter-rafter do not meet over ridge-purlin. Two trimmers joined to eastern part of rafter.

<sup>35</sup> Likely but not ascertainable.

<sup>36</sup> Rafter and counter-rafter do not meet over ridge-purlin.

<sup>37</sup> Rafter and counter-rafter do not meet over ridge-purlin.

<sup>38</sup> Trimmers joined to eastern side of collar-beam.

<sup>39</sup> Attached to the western side of rafter 025.



# 128029-031

## Truss 9

Item	Cross-sectional Dimension	Assembly Marks	Tool Marks	Redundant Features	Fixings
Rafter (North, 029) <sup>40</sup>	63 x 165 mm	None	Machine-sawn (vertical kerbs)	Lath and Plaster Marks	Probably Nails <sup>41</sup>
Rafter (South, 030) <sup>42</sup>	63 x 165 mm	None	Machine-sawn (vertical kerbs)	None	Bolts
Collar-beam (031) <sup>43</sup>	67 x 225 mm	None	Machine-sawn (vertical kerbs)	Handmade nails (top)	Probably Nails <sup>44</sup> Bolts



**Fig. 128-10**  
View from southeast showing northern rafter (029) of truss 9 (first rafter from right).

<sup>40</sup> Rafter and counter-rafter do not meet over ridge-purlin. Rafter joints into trimmer spanning between rafters 025 and 032.

<sup>41</sup> Likely but not ascertainable.

<sup>42</sup> Rafter and counter-rafter do not meet over ridge-purlin.

<sup>43</sup> Collar-beam consists of two parts. Both ends join into a trimmer that links collar-beams 027 and 034.

<sup>44</sup> Likely but not ascertainable.

# 128032-35

## Truss 10

Item	Cross-sectional Dimension	Assembly Marks	Tool Marks	Redundant Features	Fixings
Rafter (North, 032) <sup>45</sup>	70 x 160 mm	None	Machine-sawn (vertical kerbs); adzed	Lath and Plaster Marks	Probably Nails <sup>46</sup>
Rafter (South, 033)	63 x 165 mm	None	Machine-sawn (vertical kerbs)	None	Bolts
Collar-beam (North, 034)	65 x 225 mm	None	Machine-sawn (vertical kerbs)	Handmade nails (top, both sides)	Probably Nails <sup>47</sup>
Collar-beam (South, 035)	60 x 230 mm	None	Machine-sawn (vertical kerbs)	Handmade nails (both sides)	Bolts



**Fig. 128-11**  
View from south showing northern rafter (032) and northern collar-beam (034) of truss 10 (fourth couple from right).

<sup>45</sup> Rafter and counter-rafter do not meet over ridge-purlin. Rafter is meeting trimmer at its eastern side.

<sup>46</sup> Likely but not ascertainable.

<sup>47</sup> Likely but not ascertainable.

# 128036-039

## Trusses 8-11

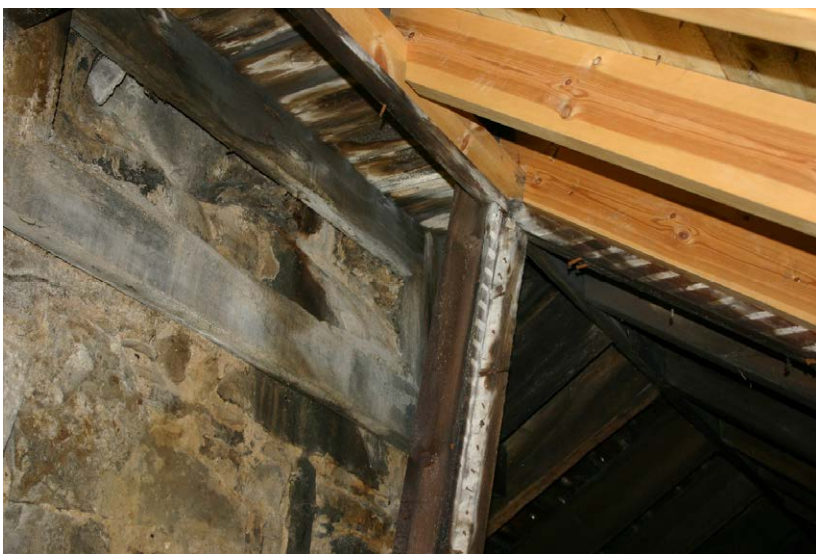
Item	Cross-sectional Dimension	Assembly Marks	Tool Marks	Redundant Features	Fixings
Trimmer (Rafter, Top, 036)	See Fig.128-12	None	Not ascertained	None	Not ascertained
Trimmer (Rafter, Bottom, 037)	See Fig.128-12	None	Not ascertained	None	Not ascertained
Trimmer (Collar-beam, North, 038)	See Fig.128-12	None	Not ascertained	None	Not ascertained
Trimmer (Collar-beam, South, 039)	See Fig.128-12	None	Not ascertained	None	Not ascertained



**Fig. 128-12**  
View from south showing bottom trimmer 037 between rafters 025 and 032 and northern and southern trimmers (038 and 039) between collar-beams 027 and 034.

**128040-041**  
Truss 11S

Item	Cross-sectional Dimension	Assembly Marks	Tool Marks	Redundant Features	Fixings
Rafter (South, 040) <sup>48</sup>	63 x 160 mm	None	Machine-sawn (vertical kerbs)	None	Bolts
Collar-beam (041) <sup>49</sup>	68 x 210 mm	None	Machine-sawn (vertical kerbs)	Handmade nails (top, both sides)	Bolts



**Fig. 128-13**  
View from west showing upper part of rafter 040 (fourth rafter from right).

<sup>48</sup> Rafter does not have any counter rafter. A board made of modern material is fixed to the western face of the rafter and a trimmer linking rafters 040 and 048 is fixed to the same side.

<sup>49</sup> Collar-beam meets a cross-joist that stretches from collar-beam 041 to collar-beam 107.

# 128042-043

Truss 12S

Item	Cross-sectional Dimension	Assembly Marks	Tool Marks	Redundant Features	Fixings
Rafter (South, 042) <sup>50</sup>	63 x 160 mm	None	Machine-sawn (vertical kerbs)	None	Bolts
Collar-beam (043) <sup>51</sup>	60 x 22.0 mm	None	Machine-sawn (vertical kerbs)	Handmade nails (top, both sides)	Bolts



**Fig. 128-14**  
View from northeast showing southern rafter (042) of truss 12 (second couple from west).

<sup>50</sup> Rafter joins into a trimmer that links rafters 040 and 048.

<sup>51</sup> Collar-beam meets a cross-joist that stretches from collar-beam 041 to collar-beam 107.



# 128044-45

Truss 13S

Item	Cross-sectional Dimension	Assembly Marks	Tool Marks	Redundant Features	Fixings
Rafter (South, 044) <sup>52</sup>	63 x 165 mm	None	Machine-sawn (vertical kerbs)	None	Bolts
Collar-beam (045) <sup>53</sup>	63 x 225 mm	None	Machine-sawn (vertical kerbs)	Handmade nails (top, both sides)	Bolts



**Fig. 128-15**  
View from west showing collar-beam (045) of truss 13 (second beam from top).

<sup>52</sup> Rafter joins into a trimmer that links rafters 040 and 048.

<sup>53</sup> Collar-beam meets a cross-joist that stretches from collar-beam 041 to collar-beam 107.

# 128046-047

Truss 14S

Item	Cross-sectional Dimension	Assembly Marks	Tool Marks	Redundant Features	Fixings
Rafter (South, 046) <sup>54</sup>	60 x 165 mm	None	Machine-sawn (vertical kerbs)	None	Bolts
Collar-beam (047) <sup>55</sup>	50 x 130 mm	None	Machine-sawn (vertical kerbs)	None	Bolts



**Fig. 128-16**  
View from north showing collar-beam (047) and southern rafter (046) of truss 14 (fourth couple from right).

<sup>54</sup> Rafter joins into a trimmer that links rafters 040 and 048.

<sup>55</sup> Collar-beam meets a cross-joist that stretches from collar-beam 041 to collar-beam 107.

# 128048-049

Truss 15S

Item	Cross-sectional Dimension	Assembly Marks	Tool Marks	Redundant Features	Fixings
Rafter (South, 048) <sup>56</sup>	63 x 170 mm	None	Machine-sawn (vertical kerbs)	None	Bolts
Collar-beam (049) <sup>57</sup>	63 x 230 mm	None	Machine-sawn (vertical kerbs)	Handmade nails (top, both sides)	Bolts



**Fig. 128-17**  
View from north showing collar-beam (049) and southern rafter (048) of truss 15 (sixth couple from right)

<sup>56</sup> Rafter joins into a trimmer that links rafters 040 and 048.

<sup>57</sup> Collar-beam meets a cross-joist that stretches from collar-beam 041 to collar-beam 107.



**128050-051**  
Truss 16S

Item	Cross-sectional Dimension	Assembly Marks	Tool Marks	Redundant Features	Fixings
Rafter (South, 050)	63 x 165 mm	None	Machine-sawn (vertical kerbs)	None	Bolts
Collar-beam (051) <sup>58</sup>	63 x 225 mm	None	Machine-sawn (vertical kerbs)	Handmade nails (both sides)	Bolts



**Fig. 128-18**  
View from west showing collar-beam (051) of truss 16 (second beam from bottom).

<sup>58</sup> Collar-beam meets a cross-joist that stretches from collar-beam 041 to collar-beam 107.

**128052-061**  
Trusses 11S-16S

Item	Cross-sectional Dimension	Assembly Marks	Tool Marks	Redundant Features	Fixings
Post, (052)	See Fig.129-19	None	Not ascertained	None	Not ascertained
Post, (053)	See Fig.129-19	None	Not ascertained	None	Not ascertained
Post, (054)	See Fig.129-19	None	Not ascertained	None	Not ascertained
Post, (055)	See Fig.129-19	None	Not ascertained	None	Not ascertained
Post, (056)	See Fig.129-19	None	Not ascertained	None	Not ascertained
Post, (057)	See Fig.129-19	None	Not ascertained	None	Not ascertained
Post, (058)	See Fig.129-19	None	Not ascertained	None	Not ascertained
Post, (059)	See Fig.129-19	None	Not ascertained	None	Not ascertained
Post, (060)	See Fig.129-19	None	Not ascertained	None	Not ascertained
Trimmer, (061)	See Fig.129-19	None	Not ascertained	None	Not ascertained



**Fig. 128-19**  
View from west showing posts 052-060 and trimmer 061.

**128062-068**  
Trusses 11S-16S

Item	Cross-sectional Dimension	Assembly Marks	Tool Marks	Redundant Features	Fixings
Board, (062)	See Fig.128-20	None	Not ascertained	None	Not ascertained
Board, (063)	See Fig.128-20	None	Not ascertained	None	Not ascertained
Board, (064)	See Fig.128-20	None	Not ascertained	None	Not ascertained
Board, (065)	See Fig.128-20	None	Not ascertained	None	Not ascertained
Board, (066)	See Fig.128-20	None	Not ascertained	None	Not ascertained
Tie-bar, (067)	See Fig.128-20	None	Not ascertained	None	Not ascertained
Rafter, (068)	See Fig.128-20	None	Not ascertained	None	Not ascertained



**Fig. 128-20**  
View from west showing rafter (068), tie-bar (067) and boards (062-066).

# 128093-095

## Truss 21

Item	Cross-sectional Dimension	Assembly Marks	Tool Marks	Redundant Features	Fixings
Rafter (North, 093)	70 x 160 mm	None	Machine-sawn (vertical kerbs); adzed	Lath and Plaster Marks	Probably Nails <sup>59</sup>
Rafter (South, 094)	65 x 162 mm	None	Machine-sawn (vertical kerbs)	None	Bolts
Collar-beam (095) <sup>60</sup>	65 x 220 mm	None	Machine-sawn (vertical kerbs)	Handmade nails (top, both sides)	Bolts Probably Nails <sup>61</sup>



**Fig. 128-31**  
View from north showing southern rafter (094) and collar-beam (095) of truss 21 (fifth couple from chimney).

<sup>59</sup> Likely but not ascertainable.

<sup>60</sup> Collar-beam meets a cross-joist that stretches from collar-beam 041 to collar-beam 107.

<sup>61</sup> Likely but not ascertainable.

# 128096-098

## Truss 22

Item	Cross-sectional Dimension	Assembly Marks	Tool Marks	Redundant Features	Fixings
Rafter (North, 096)	70 x 160 mm	None	Machine-sawn (vertical kerbs)	Lath and Plaster Marks	Probably Nails <sup>62</sup>
Rafter (South, 097)	65 x 162 mm	None	Machine-sawn (vertical kerbs)	None	Bolts
Collar-beam (098)	65 x 225 mm	None	Machine-sawn (vertical kerbs)	Handmade nails (top, both sides)	Bolts Probably Nails <sup>63</sup>



**Fig. 128-32**  
View from southwest showing northern rafter (096) and collar-beam (097) of truss 22 (sixth couple left of chimney).

<sup>62</sup> Likely but not ascertainable.

<sup>63</sup> Likely but not ascertainable.



# 128099-101

## Truss 23

Item	Cross-sectional Dimension	Assembly Marks	Tool Marks	Redundant Features	Fixings
Rafter (North, 099)	65 x 157 mm	None	Machine-sawn (vertical kerbs); adzed	Lath and Plaster Marks	Probably Nails <sup>64</sup>
Rafter (South, 100)	64 x 167 mm	None	Machine-sawn (vertical kerbs)	None	Bolts
Collar-beam (101)	65 x 220 mm	None	Machine-sawn (vertical kerbs)	Handmade nails (top, both sides)	Bolts Probably Nails <sup>65</sup>



**Fig. 128-33**

View from south showing northern rafter (100) and collar-beam (101) of truss 23 (third couple from chimney).

<sup>64</sup> Likely but not ascertainable.

<sup>65</sup> Likely but not ascertainable.

## 128102-104

### Truss 24

Item	Cross-sectional Dimension	Assembly Marks	Tool Marks	Redundant Features	Fixings
Rafter (North, 102)	63 x 155 mm	None	Machine-sawn (vertical kerbs)	Lath and Plaster Marks	Probably Nails <sup>66</sup>
Rafter (South, 103)	65 x 165 mm	None	Machine-sawn (vertical kerbs)	None	Bolts
Collar-beam (104)	65 x 220 mm	None	Machine-sawn (vertical kerbs)	Handmade nails (top, both sides)	Bolts Probably Nails <sup>67</sup>



**Fig. 128-34**

View from south showing northern rafter (103) and collar-beam (104) of truss 24 (second couple from chimney).

<sup>66</sup> Likely but not ascertainable.

<sup>67</sup> Likely but not ascertainable.

## 128105-107

### Truss 25

Item	Cross-sectional Dimension	Assembly Marks	Tool Marks	Redundant Features	Fixings
Rafter (North, 105)	55 x 155 mm	None	Machine-sawn (vertical kerbs); adzed	Lath and Plaster Marks	Probably Nails <sup>68</sup>
Rafter (South, 106) <sup>69</sup>	63 x 165 mm	None	Machine-sawn (vertical kerbs)	None	Bolts
Collar-beam (107) <sup>70</sup>	77 x 220 mm	None	Machine-sawn (vertical kerbs)	Handmade nails (top, both sides)	Bolts Probably Nails <sup>71</sup>



**Fig. 128-35**

View from south showing northern rafter (105) and collar-beam (107) of truss 25 (first couple from chimney).

<sup>68</sup> Likely but not ascertainable.

<sup>69</sup> Rafter 106 meets trimmer 115 that links rafters 106 and 112.

<sup>70</sup> Collar-beam meets trimmer 114 that links collar-beams 107 and 113. It also meets two further trimmers (116 and 117) that frame the access-hatch.

<sup>71</sup> Likely but not ascertainable.



## 128108-110

### Truss 26

Item	Cross-sectional Dimension	Assembly Marks	Tool Marks	Redundant Features	Fixings
Rafter (North, 108)	65 x 163 mm	None	Machine-sawn (vertical kerbs); adzed	Lath and Plaster Marks	Probably Nails <sup>72</sup>
Rafter (South, 109) <sup>73</sup>	60 x 163 mm	None	Machine-sawn (vertical kerbs)	None	Probably Nails <sup>74</sup>
Collar-beam (North, 110) <sup>75</sup>	60 x 225 mm	None	Machine-sawn (vertical kerbs)	Handmade nails (top, both sides)	Probably Nails <sup>76</sup>



**Fig. 128-36**  
View from north showing collar-beam (110) of truss 26 (second couple from right).

<sup>72</sup> Likely but not ascertainable.

<sup>73</sup> Rafter 106 meets trimmer 115 that links rafters 106 and 112.

<sup>74</sup> Likely but not ascertainable.

<sup>75</sup> Collar-beam meets trimmer 114 that links collar-beams 107 and 113. It also meets two further trimmers (116 and 117) that frame the access-hatch.

<sup>76</sup> Likely but not ascertainable.

## 128111-113

### Truss 27

Item	Cross-sectional Dimension	Assembly Marks	Tool Marks	Redundant Features	Fixings
Rafter (North, 111)	56 x 163 mm	None	Machine-sawn (vertical kerbs)	None	Probably Nails <sup>77</sup>
Rafter (South, 112) <sup>78</sup>	60 x 163 mm	None	Machine-sawn (vertical kerbs)	None	Probably Nails <sup>79</sup>
Collar-beam (South, 113) <sup>80</sup>	65 x 205 mm	None	Machine-sawn (vertical kerbs)	None	Probably Nails <sup>81</sup>



**Fig. 128-37**  
View from south showing northern and southern rafters (111 and 112) of truss 27 (fifth rafter from left).

<sup>77</sup> Likely but not ascertainable.

<sup>78</sup> Rafter 106 meets trimmer 115 that links rafters 106 and 112.

<sup>79</sup> Likely but not ascertainable.

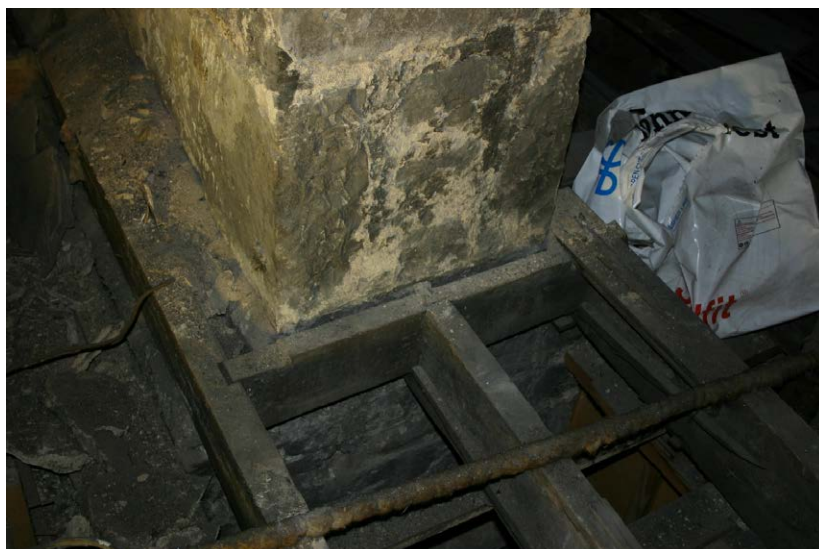
<sup>80</sup> Collar-beam 113 meets trimmer 114 that links collar-beams 107 and 113. It also meets two further trimmers (116 and 117) that frame the access-hatch, two posts that are attached to collar-beams 113, a board that connects collar-beams 113, 120, 123 and 128 and a cross-joist that connects collar-beams 113 and 204.

<sup>81</sup> Likely but not ascertainable.

# 128114-117

Trusses 25-27

Item	Cross-sectional Dimension	Assembly Marks	Tool Marks	Redundant Features	Fixings
Trimmer, (Chimney, Bottom, 114)	See Fig.128-38	None	Not ascertained	None	Not ascertained
Board, (Chimney, 115)	See Fig.128-37	None	Not ascertained	None	Not ascertained
Trimmer, (Hatch, North, 116)	See Fig.128-39	None	Not ascertained	None	Not ascertained
Trimmer, (Hatch, South, 117)	See Fig.128-39	None	Not ascertained	None	Not ascertained



**Fig. 128-38**  
View from north showing collar-beams 107, 110 and 113) and trimmer 114.

# 128118-121

## Truss 28

Item	Cross-sectional Dimension	Assembly Marks	Tool Marks	Redundant Features	Fixings
Rafter (North, 118)	60 x 172 mm	None	Machine-sawn (vertical kerbs); adzed	Lath and Plaster Marks	Probably Nails <sup>82</sup>
Rafter (South, 119)	65 x 168 mm	None	Machine-sawn (vertical kerbs); adzed	None	Bolts
Collar-beam (North, 120) <sup>83</sup>	62 x 220 mm	None	Machine-sawn (vertical kerbs)	None	Probably Nails <sup>84</sup>
Collar-beam (South, 121) <sup>85</sup>	65 x 225 mm	None	Machine-sawn (vertical kerbs)	Handmade nails (top, both sides)	Bolts Probably Nails <sup>86</sup>



**Fig. 128-39**  
View from east showing northern rafter (118) and collar-beam (120) of truss 28 (fourth couple from right).

<sup>82</sup> Likely but not ascertainable.

<sup>83</sup> One post attached to collar-beam 120 and also a board that connects collar-beams 113, 120, 123 and 128.

<sup>84</sup> Likely but not ascertainable.

<sup>85</sup> A cross-joint connects collar-beams 113 and 204.

<sup>86</sup> Likely but not ascertainable.

# 128122-125

## Truss 29

Item	Cross-sectional Dimension	Assembly Marks	Tool Marks	Redundant Features	Fixings
Rafter (North, 122)	60 x 160 mm	None	Machine-sawn (vertical kerbs); adzed	Lath and Plaster Marks	Probably Nails <sup>87</sup>
Collar-beam (North, 123) <sup>88</sup>	65 x 205 mm	None	Machine-sawn (vertical kerbs)	None	Probably Nails <sup>89</sup>
Rafter (South, 124)	65 x 165 mm	None	Machine-sawn (vertical kerbs)	None	Bolts
Collar-beam (South, 125) <sup>90</sup>	65 x 265 mm	None	Machine-sawn (vertical kerbs)	Handmade nails (top, both sides)	Bolts Probably Nails <sup>91</sup>



**Fig. 128-40**  
View from south showing northern rafter (122) and collar-beam (123) of truss 29 (sixth couple from right).

<sup>87</sup> Likely but not ascertainable.

<sup>88</sup> One post attached to collar-beam 123 and also a board that connects collar-beams 113, 120, 123 and 128. A ladder is supported by collar-beams 123 and 128

<sup>89</sup> Likely but not ascertainable.

<sup>90</sup> A cross-joist connects collar-beams 113 and 204.

<sup>91</sup> Likely but not ascertainable.



## 128069-070

Truss 11N

Item	Cross-sectional Dimension	Assembly Marks	Tool Marks	Redundant Features	Fixings
Rafter (North, 069)	70 x 170 mm	None	Machine-sawn (vertical kerbs)	None	Probably Nails <sup>92</sup>
Collar-beam (070)	63 x 220 mm	None	Machine-sawn (vertical kerbs)	Handmade nails (top, both sides)	Probably Nails <sup>93</sup>



**Fig. 128-21**

View from southeast showing collar-beam (070) and northern rafter (069) of truss 11 (second couple from right).

<sup>92</sup> Likely but not ascertainable.

<sup>93</sup> Likely but not ascertainable.

## 128071-072

Truss 12N

Item	Cross-sectional Dimension	Assembly Marks	Tool Marks	Redundant Features	Fixings
Rafter (North, 071)	55 x 160 mm	None	Machine-sawn (vertical kerbs)	None	Probably Nails <sup>94</sup>
Collar-beam (072)	62 x 220 mm	None	Machine-sawn (vertical kerbs)	Handmade nails (top, both sides)	Probably Nails <sup>95</sup>



**Fig. 128-22**  
View from southeast showing collar-beam (072) and northern rafter (071) of truss 12 (third couple from right).

<sup>94</sup> Likely but not ascertainable.

<sup>95</sup> Likely but not ascertainable.

# 128073-074

## Truss 13

Item	Cross-sectional Dimension	Assembly Marks	Tool Marks	Redundant Features	Fixings
Rafter (North, 073)	63 x 170 mm	None	Machine-sawn (vertical kerbs)	None	Probably Nails <sup>96</sup>
Collar-beam (074)	65 x 220 mm	None	Machine-sawn (vertical kerbs)	Handmade nails (top, both sides)	Probably Nails <sup>97</sup>



**Fig. 128-23**  
View from southeast showing collar-beam (074) and northern rafter (073) of truss 13 (forth couple from right).

<sup>96</sup> Likely but not ascertainable.

<sup>97</sup> Likely but not ascertainable.

# 128075-076

Truss 14N

Item	Cross-sectional Dimension	Assembly Marks	Tool Marks	Redundant Features	Fixings
Rafter (North, 075)	63 x 160 mm	None	Machine-sawn (vertical kerbs)	None	Probably Nails <sup>98</sup>
Collar-beam (076)	60 x 220 mm	None	Machine-sawn (vertical kerbs)	Handmade nails (top, both side)	Probably Nails <sup>99</sup>



**Fig. 128-24**  
View from east showing collar-beam (076) of truss 14 (second beam from bottom).

<sup>98</sup> Likely but not ascertainable.

<sup>99</sup> Likely but not ascertainable.

## 128077-078

Truss 15N

Item	Cross-sectional Dimension	Assembly Marks	Tool Marks	Redundant Features	Fixings
Rafter (North, 077)	67 x 157 mm	None	Machine-sawn (vertical kerbs)	None	Probably Nails <sup>100</sup>
Collar-beam (078)	75 x 225 mm	None	Machine-sawn (vertical kerbs)	Handmade nails (top, both side)	Probably Nails <sup>101</sup>



**Fig. 128-25**  
View from west showing northern rafter of truss 15 (first rafter from top).

<sup>100</sup> Likely but not ascertainable.

<sup>101</sup> Likely but not ascertainable.



# 128079-080

Truss 16N

Item	Cross-sectional Dimension	Assembly Marks	Tool Marks	Redundant Features	Fixings
Rafter (North, 079)	65 x 155 mm	None	Machine-sawn (vertical kerbs)	None	Probably Nails <sup>102</sup>
Collar-beam (080)	60 x 220 mm	None	Machine-sawn (vertical kerbs)	Handmade nails (top, both side)	Probably Nails <sup>103</sup>



**Fig. 128-26**  
View from southeast showing collar-beam (080) and northern rafter (079) of truss 16 (fourth couple from right).

<sup>102</sup> Likely but not ascertainable.

<sup>103</sup> Likely but not ascertainable.

# 128081-083

## Truss 17

Item	Cross-sectional Dimension	Assembly Marks	Tool Marks	Redundant Features	Fixings
Rafter (North, 081)	75 x 165 mm	None	Machine-sawn (vertical kerbs); adzed	Lath and Plaster Marks	Probably Nails <sup>104</sup>
Rafter (South, 082)	65 x 165 mm	None	Machine-sawn (vertical kerbs)	None	Bolts
Collar-beam (083) <sup>105</sup>	65 x 200 mm	None	Machine-sawn (vertical kerbs)	Handmade nails (top, both sides)	Bolts Probably Nails <sup>106</sup>



**Fig. 128-27**

View from west showing northern rafter (081)) of truss 17 (first couple in front of chimney).

<sup>104</sup> Likely but not ascertainable.

<sup>105</sup> Collar-beam meets a cross-joist that stretches from collar-beam 041 to collar-beam 107.

<sup>106</sup> Likely but not ascertainable.

# 128084-086

## Truss 18

Item	Cross-sectional Dimension	Assembly Marks	Tool Marks	Redundant Features	Fixings
Rafter (North, 084)	60 x 165 mm	None	Machine-sawn (vertical kerbs); adzed	Lath and Plaster Marks	Probably Nails <sup>107</sup>
Rafter (South, 085)	63 x 165 mm	None	Machine-sawn (vertical kerbs)	None	Bolts
Collar-beam (086) <sup>108</sup>	72 x 210 mm	None	Machine-sawn (vertical kerbs)	Handmade nails (top, both sides)	Bolts Probably Nails <sup>109</sup>



**Fig. 128-28**  
View from south showing northern and southern rafters (064 and 085) of truss 18 (seventh couple from right).

<sup>107</sup> Likely but not ascertainable.

<sup>108</sup> Collar-beam meets a cross-joist that stretches from collar-beam 041 to collar-beam 107.

<sup>109</sup> Likely but not ascertainable.

# 128087-089

## Truss 19

Item	Cross-sectional Dimension	Assembly Marks	Tool Marks	Redundant Features	Fixings
Rafter (North, 087)	67 x 147 mm	None	Machine-sawn (vertical kerbs); adzed	Lath and Plaster Marks	Probably Nails <sup>110</sup>
Rafter (South, 088)	63 x 175 mm	None	Machine-sawn (vertical kerbs)	None	Bolts
Collar-beam (089) <sup>111</sup>	65 x 210 mm	None	Machine-sawn (vertical kerbs)	Handmade nails (top, both sides)	Bolts Probably Nails <sup>112</sup>



**Fig. 128-29**

View from south showing northern rafter (086) and collar-beam (088) of truss 19 (sixth couple from right).

<sup>110</sup> Likely but not ascertainable.

<sup>111</sup> Collar-beam meets a cross-joist that stretches from collar-beam 041 to collar-beam 107.

<sup>112</sup> Likely but not ascertainable.

# 128090-092

## Truss 20

Item	Cross-sectional Dimension	Assembly Marks	Tool Marks	Redundant Features	Fixings
Rafter (North, 090)	63 x 155 mm	None	Machine-sawn (vertical kerbs); adzed	Lath and Plaster Marks	Probably Nails <sup>113</sup>
Rafter (South, 091)	65 x 162 mm	None	Machine-sawn (vertical kerbs)	None	Bolts
Collar-beam (092) <sup>114</sup>	68 x 210 mm	None	Machine-sawn (vertical kerbs)	Handmade nails (top, both sides)	Bolts Probably Nails <sup>115</sup>



**Fig. 128-30**

View from north showing southern rafter (091) and collar-beam (092) of truss 20 (sixth couple from right).

<sup>113</sup> Likely but not ascertainable.

<sup>114</sup> Collar-beam meets a cross-joist that stretches from collar-beam 041 to collar-beam 107.

<sup>115</sup> Likely but not ascertainable.



## 128152-153

Truss 39N

Item	Cross-sectional Dimension	Assembly Marks	Tool Marks	Redundant Features	Fixings
Rafter (North, 152)	60 x 163 mm	None	Machine-sawn (vertical kerbs)	None	Probably Nails <sup>116</sup>
Collar-beam (153)	62 x 220 mm	None	Machine-sawn (vertical kerbs)	Handmade nails (top, both sides)	Probably Nails <sup>117</sup>



**Fig. 128-51**  
View from northeast showing northern collar-beam of truss 39N (second beam from left).

<sup>116</sup> Likely but not ascertainable.

<sup>117</sup> Likely but not ascertainable.

**128154**  
Trusses 35-39N

Item	Cross-sectional Dimension	Assembly Marks	Tool Marks	Redundant Features	Fixings
Board, (154)	See Fig.56	Not ascertained	Not ascertained	Not ascertained	Not ascertained



**Fig. 128-52**  
View from southeast showing board 154 at head of chimney.

## 128155-156

Truss 36S

Item	Cross-sectional Dimension	Assembly Marks	Tool Marks	Redundant Features	Fixings
Rafter (South, 155)	73 x 165 mm	None	Machine-sawn (vertical kerbs)	None	Bolts
Collar-beam (156) <sup>118</sup>	60 x 230 mm	None	Machine-sawn (vertical kerbs)	Handmade nails (top, both sides)	Bolts



**Fig. 128-53**

View from east showing southern rafter of truss 36S (fifth couple from left).

<sup>118</sup> A cross-joint connects collar-beams 113 and 204.

# 128157-158

Truss 37S

Item	Cross-sectional Dimension	Assembly Marks	Tool Marks	Redundant Features	Fixings
Rafter (South, 157)	75 x 185 mm	None	Machine-sawn (vertical kerbs)	None	Bolts
Collar-beam (158) <sup>119</sup>	63 x 225 mm	None	Machine-sawn (vertical kerbs)	Handmade nails (top, both sides)	Bolts



**Fig. 128-54**

View from northeast showing southern rafter and collar-beam of truss 38S (sixth couple from left).

<sup>119</sup> A cross-joist connects collar-beams 113 and 204.

# 128159-160

Truss 38S

Item	Cross-sectional Dimension	Assembly Marks	Tool Marks	Redundant Features	Fixings
Rafter (South, 159)	70 x 170 mm	None	Machine-sawn (vertical kerbs)	None	Bolts
Collar-beam (160) <sup>120</sup>	63 x 225 mm	None	Machine-sawn (vertical kerbs)	Handmade nails (top, both sides)	Bolts



**Fig. 128-55**  
View from north showing southern rafter and collar-beam of truss 38S (eighth couple from left).

<sup>120</sup> A cross-joint connects collar-beams 113 and 204.



**128161-165**  
Trusses 35-39S

Item	Cross-sectional Dimension	Assembly Marks	Tool Marks	Redundant Features	Fixings
Board, (161)	See Fig.128-56	Not ascertained	Not ascertained	Not ascertained	Not ascertained
Auxiliary Rafter, (162)	See Fig.128-56	Not ascertained	Not ascertained	Not ascertained	Not ascertained
Auxiliary Rafter, (163)	See Fig.128-56	Not ascertained	Not ascertained	Not ascertained	Not ascertained
Auxiliary Rafter, (164)	See Fig.128-56	Not ascertained	Not ascertained	Not ascertained	Not ascertained
Auxiliary Rafter, (165)	See Fig.128-56	Not ascertained	Not ascertained	Not ascertained	Not ascertained



**Fig. 128-56**  
View from northwest showing board 161 and auxiliary rafters 162-165 at head of chimney.

# 128166-169

## Truss 40

Item	Cross-sectional Dimension	Assembly Marks	Tool Marks	Redundant Features	Fixings
Rafter (North, 166)	65 x 165 mm	None	Machine-sawn (vertical kerbs)	None	Probably Nails <sup>121</sup>
Rafter (South, 167)	65 x 165 mm	None	Machine-sawn (vertical kerbs)	None	Bolts
Collar-beam (North, 168)	62 x 230 mm	None	Machine-sawn (vertical kerbs)	Handmade nails (top, both sides)	Bolts Probably Nails <sup>122</sup>
Collar-beam (South, 169) <sup>123</sup>	70 x 230 mm	None	Machine-sawn (vertical kerbs)	Handmade nails (top, both sides)	Bolts



**Fig. 128-57**  
View from east showing northern and southern rafters of truss 40 (fifth couple from top).

<sup>121</sup> Likely but not ascertainable.

<sup>122</sup> Likely but not ascertainable.

<sup>123</sup> A cross-joint connects collar-beams 113 and 204.

# 128170-172

## Truss 41

Item	Cross-sectional Dimension	Assembly Marks	Tool Marks	Redundant Features	Fixings
Rafter (North, 170)	60 x 160 mm	None	Machine-sawn (vertical kerbs)	None	Probably Nails <sup>124</sup>
Rafter (South, 171)	65 x 170 mm	None	Machine-sawn (vertical kerbs)	None	Bolts
Collar-beam (172) <sup>125</sup>	62 x 220 mm	None	Machine-sawn (vertical kerbs)	Handmade nails (top, both sides)	Bolts Probably Nails <sup>126</sup>



**Fig. 128-58**  
View from north showing southern rafter and collar-beam of truss 41 (seventh rafter from right).

<sup>124</sup> Likely but not ascertainable.

<sup>125</sup> A cross-joint collar-beams 113 and 204.

<sup>126</sup> Likely but not ascertainable.

## 128173-175

### Truss 42

Item	Cross-sectional Dimension	Assembly Marks	Tool Marks	Redundant Features	Fixings
Rafter (North, 173)	65 x 160 mm	None	Machine-sawn (vertical kerbs)	None	Probably Nails <sup>127</sup>
Rafter (South, 174)	77 x 172 mm	None	Machine-sawn (vertical kerbs)	None	Bolts
Collar-beam (175) <sup>128</sup>	63 x 220 mm	None	Machine-sawn (vertical kerbs)	Handmade nails (top, both sides)	Bolts Probably Nails <sup>129</sup>



**Fig. 128-59**  
View from northwest showing southern rafter of truss 42 (second rafter from left).

<sup>127</sup> Likely but not ascertainable.

<sup>128</sup> A cross-joint connects collar-beams 113 and 204.

<sup>129</sup> Likely but not ascertainable.

# 128176-178

## Truss 43

Item	Cross-sectional Dimension	Assembly Marks	Tool Marks	Redundant Features	Fixings
Rafter (North, 176)	60 x 165 mm	None	Machine-sawn (vertical kerbs)	None	Probably Nails <sup>130</sup>
Rafter (South, 177)	65 x 167 mm	None	Machine-sawn (vertical kerbs)	None	Bolts
Collar-beam (North, 188) <sup>131</sup>	66 x 225 mm	None	Machine-sawn (vertical kerbs)	Handmade nails (top, both sides)	Bolts Probably Nails <sup>132</sup>



**Fig. 128-60**  
View from northwest showing southern rafter of truss 43 (third rafter from left).

<sup>130</sup> Likely but not ascertainable.

<sup>131</sup> A cross-joint connects collar-beams 113 and 204.

<sup>132</sup> Likely but not ascertainable.



# 128126-129

## Truss 30

Item	Cross-sectional Dimension	Assembly Marks	Tool Marks	Redundant Features	Fixings
Rafter (North, 126)	60 x 170 mm	None	Machine-sawn (vertical kerbs)	Lath and Plaster Marks	Probably Nails <sup>133</sup>
Rafter (South, 127)	65 x 165 mm	None	Machine-sawn (vertical kerbs)	None	Bolts
Collar-beam (North, 128) <sup>134</sup>	63 x 200 mm	None	Machine-sawn (vertical kerbs)	None	Probably Nails <sup>135</sup>
Collar-beam (South, 129) <sup>136</sup>	65 x 225 mm	None	Machine-sawn (vertical kerbs)	Handmade nails (top, both sides)	Bolts Probably Nails <sup>137</sup>



**Fig. 128-41**  
View from south showing northern rafter (126) and northern collar-beam (128) of truss 30 (eight couple from right).

<sup>133</sup> Likely but not ascertainable.

<sup>134</sup> A ladder is supported by collar-beams 123 and 128.

<sup>135</sup> Likely but not ascertainable.

<sup>136</sup> A cross-joist connects collar-beams 113 and 204.

<sup>137</sup> Likely but not ascertainable.

# 128130-132

## Truss 31

Item	Cross-sectional Dimension	Assembly Marks	Tool Marks	Redundant Features	Fixings
Rafter (North, 130)	57 x 170 mm	None	Machine-sawn (vertical kerbs); adzed	Lath and Plaster Marks	Probably Nails <sup>138</sup>
Rafter (South, 131)	65 x 165 mm	None	Machine-sawn (vertical kerbs)	None	Bolts
Collar-beam (132) <sup>139</sup>	60 x 225 mm	None	Machine-sawn (vertical kerbs)	Handmade nails (top, both sides)	Bolts Probably Nails <sup>140</sup>



**Fig. 128-42**  
View from south showing northern rafter (100) and northern collar-beam (101) of truss 31 (fifth couple from right).

<sup>138</sup> Likely but not ascertainable.

<sup>139</sup> A cross-joint connects collar-beams 113 and 204.

<sup>140</sup> Likely but not ascertainable.

## 128132-135

### Truss 32

Item	Cross-sectional Dimension	Assembly Marks	Tool Marks	Redundant Features	Fixings
Rafter (North, 133)	65 x 150 mm	None	Machine-sawn (vertical kerbs)	Lath and Plaster Marks	Probably Nails <sup>141</sup>
Rafter (South, 134)	65 x 175 mm	None	Machine-sawn (vertical kerbs)	None	Bolts
Collar-beam (135) <sup>142</sup>	70 x 220 mm	None	Machine-sawn (vertical kerbs)	Handmade nails (top, both sides)	Bolts Probably Nails <sup>143</sup>



**Fig. 128-43**  
View from south showing northern rafter (132) and northern collar-beam (134) of truss 32 (sixth couple from right).

<sup>141</sup> Likely but not ascertainable.

<sup>142</sup> A cross-joint connects collar-beams 113 and 204.

<sup>143</sup> Likely but not ascertainable.

# 128136-138

## Truss 33

Item	Cross-sectional Dimension	Assembly Marks	Tool Marks	Redundant Features	Fixings
Rafter (North, 136)	65 x 175 mm	None	Machine-sawn (vertical kerbs)	Lath and Plaster Marks	Probably Nails <sup>144</sup>
Rafter (South, 137)	65 x 175 mm	None	Machine-sawn (vertical kerbs)	None	Bolts
Collar-beam (138) <sup>145</sup>	65 x 220 mm	None	Machine-sawn (vertical kerbs)	Handmade nails (top, both sides)	Bolts Probably Nails <sup>146</sup>



**Fig. 128-44**  
View from south showing northern rafter (136) and northern collar-beam (138) of truss 33 (sevenths couple from right).

<sup>144</sup> Likely but not ascertainable.

<sup>145</sup> A cross-joint connects collar-beams 113 and 204.

<sup>146</sup> Likely but not ascertainable.

# 128139-142

## Truss 34

Item	Cross-sectional Dimension	Assembly Marks	Tool Marks	Redundant Features	Fixings
Rafter (North, 139)	63 x 145 mm	None	Machine-sawn (vertical kerbs)	Lath and Plaster Marks	Probably Nails <sup>147</sup>
Collar-beam (North, 140)	75 x 225 mm	None	Machine-sawn (vertical kerbs)	Handmade nails (top, both sides)	Probably Nails <sup>148</sup>
Rafter (South, 141)	60 x 170 mm	None	Machine-sawn (vertical kerbs)	None	Bolts
Collar-beam (South, 142) <sup>149</sup>	60 x 215 mm	None	Machine-sawn (vertical kerbs)	Handmade nails (top, both sides)	Bolts Probably Nails <sup>150</sup>



**Fig. 128-45**  
View from south showing northern rafter (139) and northern collar-beam (140) of truss 34 (third couple from right).

<sup>147</sup> Likely but not ascertainable.

<sup>148</sup> Likely but not ascertainable.

<sup>149</sup> A cross-joint connects collar-beams 113 and 204.

<sup>150</sup> Likely but not ascertainable.



## 128143-145

### Truss 35

Item	Cross-sectional Dimension	Assembly Marks	Tool Marks	Redundant Features	Fixings
Rafter (North, 143) <sup>151</sup>	68 x 163 mm	None	Machine-sawn (vertical kerbs)	Lath and Plaster Marks	Probably Nails <sup>152</sup>
Rafter (South, 144)	60 x 170 mm	None	Machine-sawn (vertical kerbs)	None	Bolts
Collar-beam (145) <sup>153</sup>	65 x 225 mm	None	Machine-sawn (vertical kerbs)	Handmade nails (top, both sides)	Bolts Probably Nails <sup>154</sup>



**Fig. 128-46**

View from east showing northern and southern rafters (143 and 144) of truss 35 (first couple in front of chimney).

<sup>151</sup> Trimmer 149 connects rafters 143, 146 and 148.

<sup>152</sup> Likely but not ascertainable.

<sup>153</sup> A cross-joint connects collar-beams 113 and 204. A post connects collar-beam 145 with the ridge-purlin.

<sup>154</sup> Likely but not ascertainable.

## 128146-147

Truss 36N

Item	Cross-sectional Dimension	Assembly Marks	Tool Marks	Redundant Features	Fixings
Rafter (North, 146) <sup>155</sup>	63 x 165 mm	None	Machine-sawn (vertical kerbs)	None	Probably Nails <sup>156</sup>
Collar-beam (North, 147)	62 x 230 mm	None	Machine-sawn (vertical kerbs)	Handmade nails (top, both sides)	Probably Nails <sup>157</sup>



**Fig. 128-47**

View from southeast showing northern rafter and collar-beam of truss 36N (fifth couple from right).

<sup>155</sup> Trimmer 149 connects rafters 143, 146 and 148.

<sup>156</sup> Likely but not ascertainable.

<sup>157</sup> Likely but not ascertainable.

## 128148-149

Truss 37N

Item	Cross-sectional Dimension	Assembly Marks	Tool Marks	Redundant Features	Fixings
Rafter (North, 148) <sup>158</sup>	63 x 157 mm	None	Machine-sawn (vertical kerbs)	None	Probably Nails <sup>159</sup>
Collar-beam (149)	65 x 225 mm	None	Machine-sawn (vertical kerbs)	Handmade nails (top, both sides)	Probably Nails <sup>160</sup>



**Fig. 128-48**

View from southeast showing northern rafter and collar-beam of truss 37N (sixth couple from right).

<sup>158</sup> Trimmer 149 connects rafters 143, 146 and 148.

<sup>159</sup> Likely but not ascertainable.

<sup>160</sup> Likely but not ascertainable.

**128149**  
Trusses 35-37a

Item	Cross-sectional Dimension	Assembly Marks	Tool Marks	Redundant Features	Fixings
Trimmer, (149)	See Fig.56	Not ascertained	Not ascertained	Not ascertained	Not ascertained



**Fig. 128-49**  
View from southeast showing trimmer 149.

# 128150-151

Truss 38N

Item	Cross-sectional Dimension	Assembly Marks	Tool Marks	Redundant Features	Fixings
Rafter (North, 150)	60 x 163 mm	None	Machine-sawn (vertical kerbs)	None	Probably Nails <sup>161</sup>
Collar-beam (151)	60 x 225 mm	None	Machine-sawn (vertical kerbs)	Handmade nails (top, both sides)	Probably Nails <sup>162</sup>



**Fig. 128-50**  
View from east showing northern rafter of truss 38N (fifth couple from top).

<sup>161</sup> Likely but not ascertainable.

<sup>162</sup> Likely but not ascertainable.



# 128189-193

## Truss 44

Item	Cross-sectional Dimension	Assembly Marks	Tool Marks	Redundant Features	Fixings
Rafter (North, 189)	65 x 165 mm	None	Machine-sawn (vertical kerbs)	None	Probably Nails <sup>163</sup>
Rafter (South, 190)	65 x 165 mm	None	Machine-sawn (vertical kerbs)	None	Bolts
Collar-beam (Top, 191)	See Fig. 128-61	None	Machine-sawn (circular kerbs)	None	Nails
Collar-beam (North, 192)	65 x 225 mm	None	Machine-sawn (vertical kerbs)	Handmade nails (top, both sides)	Probably Nails <sup>164</sup>
Collar-beam (South, 193) <sup>165</sup>	62 x 200 mm	None	Machine-sawn (vertical kerbs)	None	Bolts Probably Nails <sup>166</sup>



**Fig. 128-61**  
View from Southwest showing southern rafter of truss 44 (fifth rafter left of chimney).

<sup>163</sup> Likely but not ascertainable.

<sup>164</sup> Likely but not ascertainable.

<sup>165</sup> A cross-joint connects collar-beams 113 and 204.

<sup>166</sup> Likely but not ascertainable.

# 128194-198

## Truss 45

Item	Cross-sectional Dimension	Assembly Marks	Tool Marks	Redundant Features	Fixings
Rafter (North, 194)	60 x 160 mm	None	Machine-sawn (vertical kerbs)	None	Probably Nails <sup>167</sup>
Rafter (South, 195)	63 x 168 mm	None	Machine-sawn (vertical kerbs)	None	Bolts
Collar-beam (Top, 196)	See Fig. 128-62	None	Machine-sawn (circular kerbs)	None	Nails
Collar-beam (North, 197)	70 x 225 mm	None	Machine-sawn (vertical kerbs)	Handmade nails (top, both sides)	Probably Nails <sup>168</sup>
Collar-beam (South, 198) <sup>169</sup>	65 x 195 mm	None	Machine-sawn (vertical kerbs)	None	Bolts Probably Nails <sup>170</sup>



**Fig. 128-62**  
View from northwest showing southern rafter of truss 45 (sixth rafter from left).

<sup>167</sup> Likely but not ascertainable.

<sup>168</sup> Likely but not ascertainable.

<sup>169</sup> A cross-joint connects collar-beams 113 and 204.

<sup>170</sup> Likely but not ascertainable.

# 128199-201

## Truss 46

Item	Cross-sectional Dimension	Assembly Marks	Tool Marks	Redundant Features	Fixings
Rafter (North, 199)	60 x 165 mm	None	Machine-sawn (vertical kerbs)	None	Probably Nails <sup>171</sup>
Rafter (South, 200)	65 x 170 mm	None	Machine-sawn (vertical kerbs)	None	Bolts
Collar-beam (201) <sup>172</sup>	62 x 225 mm	None	Machine-sawn (vertical kerbs)	Handmade nails (top, both sides)	Bolts Probably Nails <sup>173</sup>



**Fig. 128-63**  
View from north showing southern rafter and collar-beam of truss 46 (fourth rafter from right).

<sup>171</sup> Likely but not ascertainable.

<sup>172</sup> A cross-joint connects collar-beams 113 and 204.

<sup>173</sup> Likely but not ascertainable.

# 128202-204

## Truss 47

Item	Cross-sectional Dimension	Assembly Marks	Tool Marks	Redundant Features	Fixings
Rafter (North, 202)	50 x 130 mm	None	Machine-sawn (vertical kerbs)	None	Probably Nails <sup>174</sup>
Rafter (South, 203)	67 x 173 mm	None	Machine-sawn (vertical kerbs)	None	Bolts
Collar-beam (South, 204) <sup>175</sup>	78 x 210 mm	None	Machine-sawn (vertical kerbs)	Handmade nails (top, both sides)	Bolts Probably Nails <sup>176</sup>



**Fig. 128-64**  
View from northwest showing southern rafter of truss 47 (third rafter from right).

<sup>174</sup> Likely but not ascertainable.

<sup>175</sup> A cross-joint connects collar-beams 113 and 204.

<sup>176</sup> Likely but not ascertainable.

# 128205-206

Truss 48

Item	Cross-sectional Dimension	Assembly Marks	Tool Marks	Redundant Features	Fixings
Rafter (North, 205)	60 x 135 mm	None	Machine-sawn (vertical kerbs)	None	Probably Nails <sup>177</sup>
Rafter (South, 206)	65 x 170 mm	None	Machine-sawn (vertical kerbs)	None	Probably Nails <sup>178</sup>



**Fig. 128-65**  
View from southeast showing northern and southern rafters of truss 48 (first couple in front of wall).

<sup>177</sup> Likely but not ascertainable.

<sup>178</sup> Likely but not ascertainable.



**128207**

Truss 49

Item	Cross-sectional Dimension	Assembly Marks	Tool Marks	Redundant Features	Fixings
Rafter (South, 138 207)	65 x 170 mm	None	Machine-sawn (vertical kerbs)	None	Probably Nails <sup>179</sup>



**Fig. 128-66**  
View from north showing southern rafter of truss 49 (first rafter from right).

<sup>179</sup> Likely but not ascertainable.

## 128208-209

Ridge-purlin, Post

Item	Cross-sectional Dimension	Assembly Marks	Tool Marks	Redundant Features	Fixings
Ridge-purlin (208)	See Fiig.128-67	None	Machine-sawn (vertical kerbs)	None	Nails
Post (209)	See Fiig.128-67	None	Machine-sawn (vertical kerbs)	None	Nails

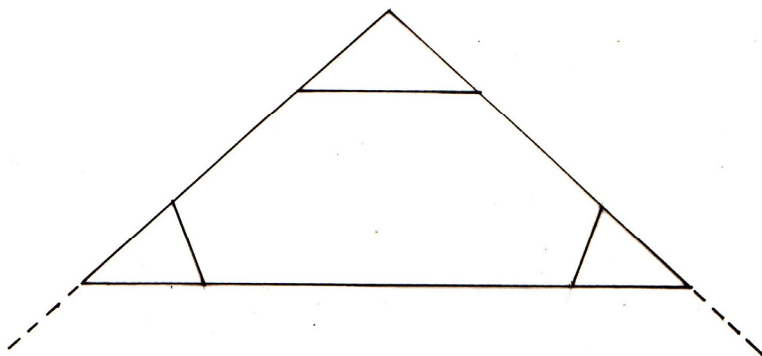


**Fig. 128-67**  
View from southeast showing northern and southern rafters of truss 48 (first couple in front of wall).

# 129027-032

## Truss 1

Item	Cross-sectional Dimension	Assembly Marks	Tool Marks	Redundant Features	Fixings
Rafter (East, 027)	65 x 165 mm	None	Machine-sawn (circular kerbs)	None	Modern Nails
Rafter (West, 028)	65 x 165 mm	None	Machine-sawn (circular kerbs)	None	Modern Nails
Collar-beam, (Top, 029)	50 x 150 mm	None	Machine-sawn (circular kerbs)	None	Modern Nails
Collar-beam, (Bottom, 030)	63 x 165 mm	None	Machine-sawn (circular kerbs)	None	Modern Nails
Strut, (East, 031)	52 x 105 mm	None	Machine-sawn (circular kerbs)	None	Modern Nails
Strut, (West, 032)	52 x 105 mm	None	Machine-sawn (circular kerbs)	None	Modern Nails

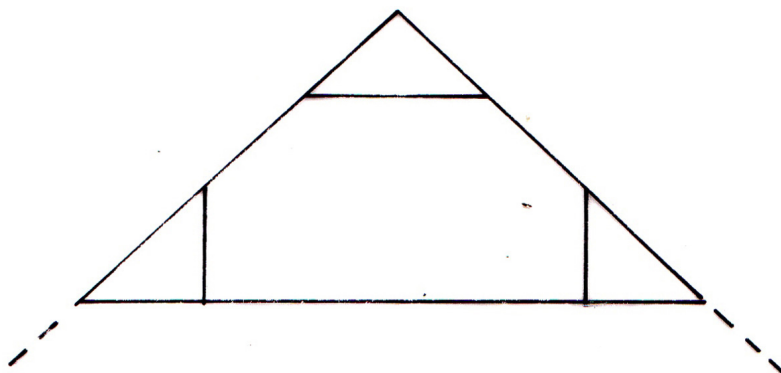


**Fig. 129-1**  
Schematic depiction of truss 1.

# 129033-038

## Truss 2

Item	Cross-sectional Dimension	Assembly Marks	Tool Marks	Redundant Features	Fixings
Rafter (East, 033)	105 x 130 mm	None	Adzed	None	Wooden Pegs
Rafter (West, 034)	115 x 105 mm	None	Adzed	None	Wooden Pegs
Collar-beam, (Top, 035)	85 x 105 mm	None	Adzed	None	Wooden Pegs
Collar-beam, (Bottom, 036) <sup>180</sup>	90 x 120 mm	None	Adzed, Pit-sawn	None	Wooden Pegs
Strut, (East, 037)	50 x 10 mm	None	Machine-sawn (circular kerbs)	None	Modern Nails
Strut, (West, 038)	50 x 10 mm	None	Machine-sawn (circular kerbs)	None	Modern Nails



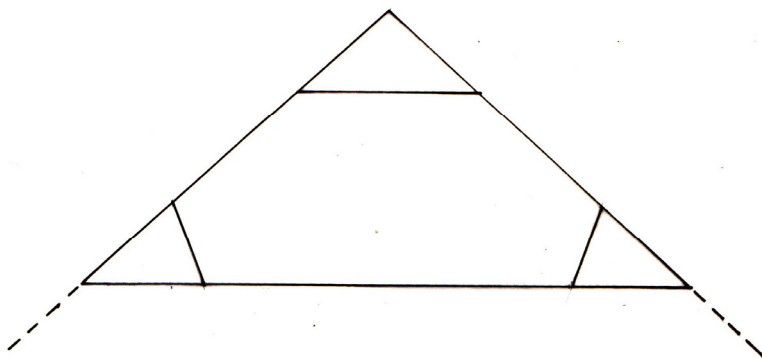
**Fig. 129-2**  
Schematic depiction of truss 2.

<sup>180</sup> The collar-beam consists of two parts, both of which are joined together with modern bolts.

# 129039-044

## Truss 3

Item	Cross-sectional Dimension	Assembly Marks	Tool Marks	Redundant Features	Fixings
Rafter (East, 039)	65 x 165 mm	None	Machine-sawn (circular kerbs)	None	Modern Nails
Rafter (West, 040)	65 x 165 mm	None	Machine-sawn (circular kerbs)	None	Modern Nails
Collar-beam, (Top, 041)	50 x 150 mm	None	Machine-sawn (circular kerbs)	None	Modern Nails
Collar-beam, (Bottom, 042)	63 x 165 mm	None	Machine-sawn (circular kerbs)	None	Modern Nails
Strut, (East, 043)	52 x 105 mm	None	Machine-sawn (circular kerbs)	None	Modern Nails
Strut, (West, 044)	52 x 105 mm	None	Machine-sawn (circular kerbs)	None	Modern Nails



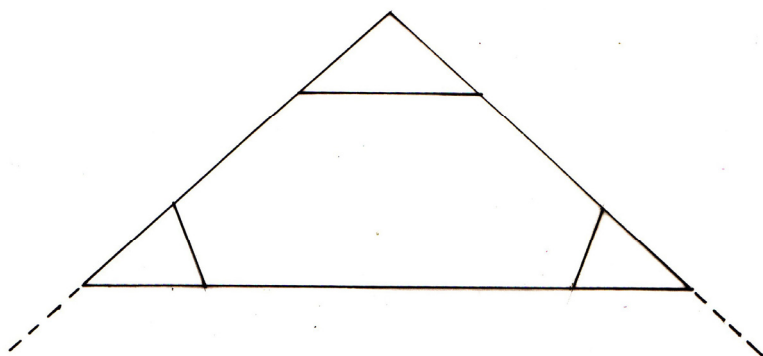
**Fig. 129-3**  
Schematic depiction of truss 3



# 129045-050

## Truss 4

Item	Cross-sectional Dimension	Assembly Marks	Tool Marks	Redundant Features	Fixings
Rafter (East, 045)	65 x 165 mm	None	Machine-sawn (circular kerbs)	None	Modern Nails
Rafter (West, 046)	65 x 165 mm	None	Machine-sawn (circular kerbs)	None	Modern Nails
Collar-beam, (Top, 047)	50 x 150 mm	None	Machine-sawn (circular kerbs)	None	Modern Nails
Collar-beam, (Bottom, 048)	63 x 165 mm	None	Machine-sawn (circular kerbs)	None	Modern Nails
Strut, (East, 049)	52 x 105 mm	None	Machine-sawn (circular kerbs)	None	Modern Nails
Strut, (West, 050)	52 x 105 mm	None	Machine-sawn (circular kerbs)	None	Modern Nails

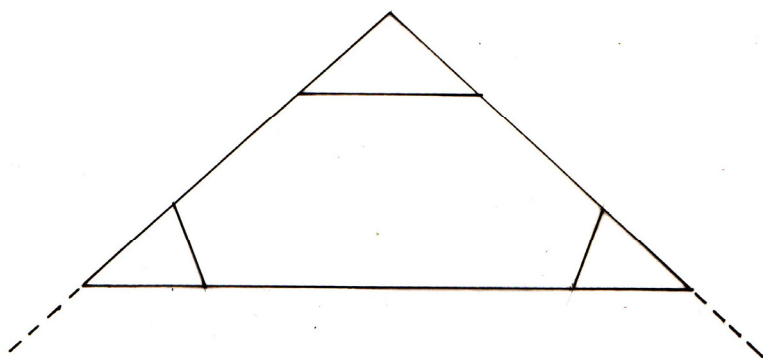


**Fig. 129-4**  
Schematic depiction of truss 4

# 129051-056

## Truss 5

Item	Cross-sectional Dimension	Assembly Marks	Tool Marks	Redundant Features	Fixings
Rafter (East, 051)	65 x 165 mm	None	Machine-sawn (circular kerbs)	None	Modern Nails
Rafter (West, 052)	65 x 165 mm	None	Machine-sawn (circular kerbs)	None	Modern Nails
Collar-beam, (Top, 053)	50 x 150 mm	None	Machine-sawn (circular kerbs)	None	Modern Nails
Collar-beam, (Bottom, 054)	63 x 165 mm	None	Machine-sawn (circular kerbs)	None	Modern Nails
Strut, (East, 055)	52 x 105 mm	None	Machine-sawn (circular kerbs)	None	Modern Nails
Strut, (West, 056)	52 x 105 mm	None	Machine-sawn (circular kerbs)	None	Modern Nails

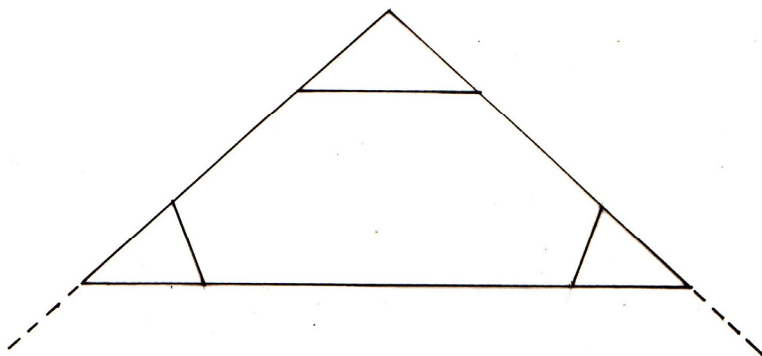


**Fig. 129-5**  
Schematic depiction of truss 5

# 129057-062

## Truss 6

Item	Cross-sectional Dimension	Assembly Marks	Tool Marks	Redundant Features	Fixings
Rafter (East, 057)	65 x 165 mm	None	Machine-sawn (circular kerbs)	None	Modern Nails
Rafter (West, 058)	65 x 165 mm	None	Machine-sawn (circular kerbs)	None	Modern Nails
Collar-beam, (Top, 059)	50 x 150 mm	None	Machine-sawn (circular kerbs)	None	Modern Nails
Collar-beam, (Bottom, 060)	63 x 165 mm	None	Machine-sawn (circular kerbs)	None	Modern Nails
Strut, (East, 061)	52 x 105 mm	None	Machine-sawn (circular kerbs)	None	Modern Nails
Strut, (West, 062)	52 x 105 mm	None	Machine-sawn (circular kerbs)	None	Modern Nails

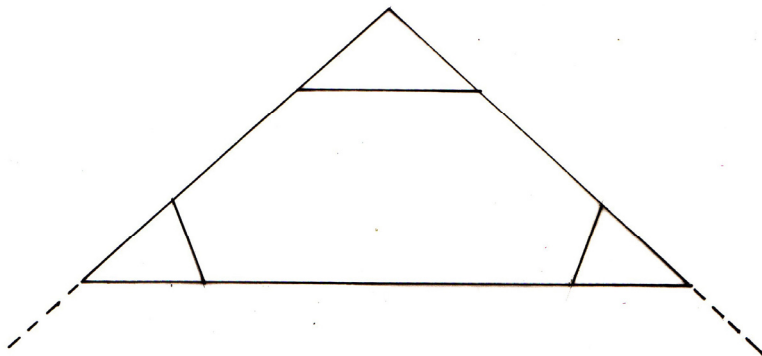


**Fig. 129-6**  
Schematic depiction of truss 6

# 129063-068

## Truss 7

Item	Cross-sectional Dimension	Assembly Marks	Tool Marks	Redundant Features	Fixings
Rafter (East, 063)	65 x 165 mm	None	Machine-sawn (circular kerbs)	None	Modern Nails
Rafter (West, 064)	65 x 165 mm	None	Machine-sawn (circular kerbs)	None	Modern Nails
Collar-beam, (Top, 065)	50 x 150 mm	None	Machine-sawn (circular kerbs)	None	Modern Nails
Collar-beam, (Bottom, 066)	63 x 165 mm	None	Machine-sawn (circular kerbs)	None	Modern Nails
Strut, (East, 067)	52 x 105 mm	None	Machine-sawn (circular kerbs)	None	Modern Nails
Strut, (West, 068)	52 x 105 mm	None	Machine-sawn (circular kerbs)	None	Modern Nails

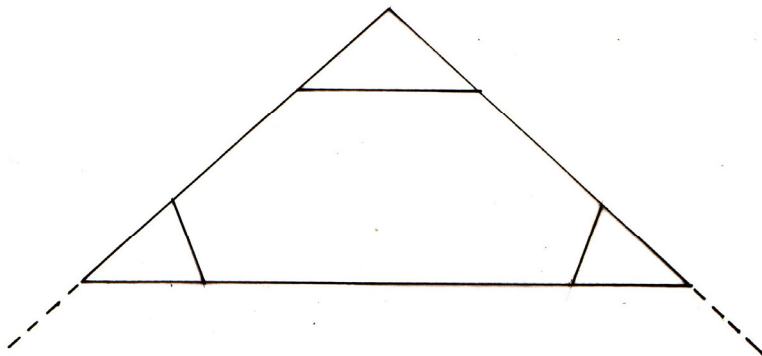


**Fig. 129-7**  
Schematic depiction of truss 7

# 129069-074

## Truss 8

Item	Cross-sectional Dimension	Assembly Marks	Tool Marks	Redundant Features	Fixings
Rafter (East, 069)	65 x 165 mm	None	Machine-sawn (circular kerbs)	None	Modern Nails
Rafter (West, 070)	65 x 165 mm	None	Machine-sawn (circular kerbs)	None	Modern Nails
Collar-beam, (Top, 071)	50 x 150 mm	None	Machine-sawn (circular kerbs)	None	Modern Nails
Collar-beam, (Bottom, 072)	63 x 165 mm	None	Machine-sawn (circular kerbs)	None	Modern Nails
Strut, (East, 073)	52 x 105 mm	None	Machine-sawn (circular kerbs)	None	Modern Nails
Strut, (West, 074)	52 x 105 mm	None	Machine-sawn (circular kerbs)	None	Modern Nails



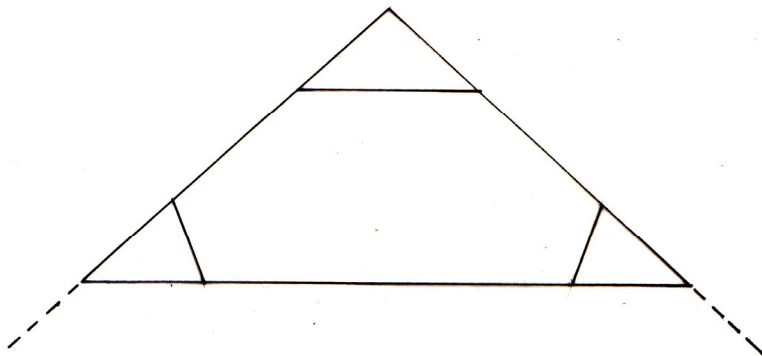
**Fig. 129-8**  
Schematic depiction of truss 8



# 129075-080

## Truss 9

Item	Cross-sectional Dimension	Assembly Marks	Tool Marks	Redundant Features	Fixings
Rafter (East, 075)	65 x 165 mm	None	Machine-sawn (circular kerbs)	None	Modern Nails
Rafter (West, 076)	65 x 165 mm	None	Machine-sawn (circular kerbs)	None	Modern Nails
Collar-beam, (Top, 077)	50 x 150 mm	None	Machine-sawn (circular kerbs)	None	Modern Nails
Collar-beam, (Bottom, 078)	63 x 165 mm	None	Machine-sawn (circular kerbs)	None	Modern Nails
Strut, (East, 079)	52 x 105 mm	None	Machine-sawn (circular kerbs)	None	Modern Nails
Strut, (West, 080)	52 x 105 mm	None	Machine-sawn (circular kerbs)	None	Modern Nails

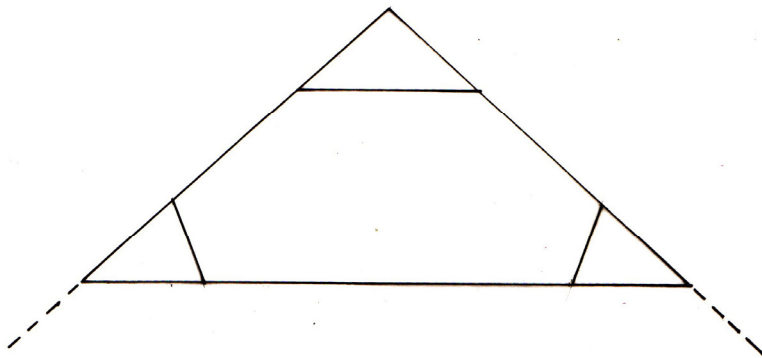


**Fig. 129-9**  
Schematic depiction of truss 9

# 129081-086

## Truss 10

Item	Cross-sectional Dimension	Assembly Marks	Tool Marks	Redundant Features	Fixings
Rafter (East, 081)	65 x 165 mm	None	Machine-sawn (circular kerbs)	None	Modern Nails
Rafter (West, 082)	65 x 165 mm	None	Machine-sawn (circular kerbs)	None	Modern Nails
Collar-beam, (Top, 083)	50 x 150 mm	None	Machine-sawn (circular kerbs)	None	Modern Nails
Collar-beam, (Bottom, 084)	63 x 165 mm	None	Machine-sawn (circular kerbs)	None	Modern Nails
Strut, (East, 085)	52 x 105 mm	None	Machine-sawn (circular kerbs)	None	Modern Nails
Strut, (West, 086)	52 x 105 mm	None	Machine-sawn (circular kerbs)	None	Modern Nails

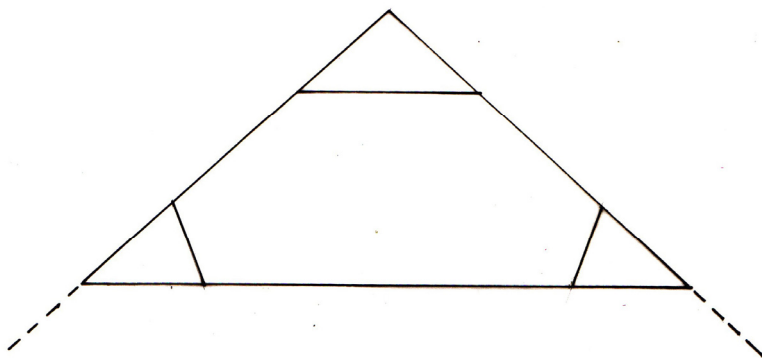


**Fig. 129-10**  
Schematic depiction of truss 10

# 129087-092

## Truss 11

Item	Cross-sectional Dimension	Assembly Marks	Tool Marks	Redundant Features	Fixings
Rafter (East, 087)	65 x 165 mm	None	Machine-sawn (circular kerbs)	None	Modern Nails
Rafter (West, 088)	65 x 165 mm	None	Machine-sawn (circular kerbs)	None	Modern Nails
Collar-beam, (Top, 089)	50 x 150 mm	None	Machine-sawn (circular kerbs)	None	Modern Nails
Collar-beam, (Bottom, 090)	63 x 165 mm	None	Machine-sawn (circular kerbs)	None	Modern Nails
Strut, (East, 091)	52 x 105 mm	None	Machine-sawn (circular kerbs)	None	Modern Nails
Strut, (West, 092)	52 x 105 mm	None	Machine-sawn (circular kerbs)	None	Modern Nails

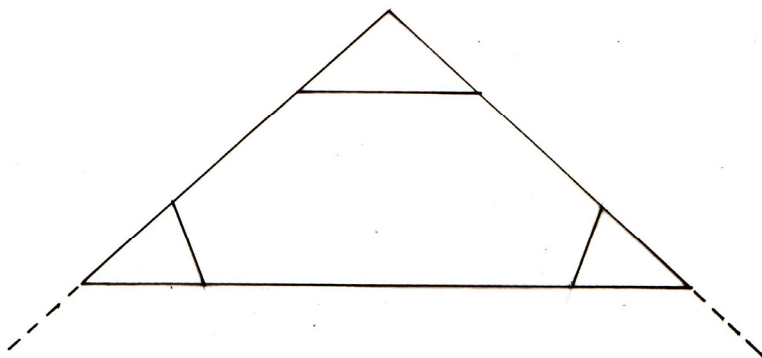


**Fig. 129-11**  
Schematic depiction of truss 11

# 129093-098

## Truss 12

Item	Cross-sectional Dimension	Assembly Marks	Tool Marks	Redundant Features	Fixings
Rafter (East, 093)	65 x 165 mm	None	Machine-sawn (circular kerbs)	None	Modern Nails
Rafter (West, 094)	65 x 165 mm	None	Machine-sawn (circular kerbs)	None	Modern Nails
Collar-beam, (Top, 095)	50 x 150 mm	None	Machine-sawn (circular kerbs)	None	Modern Nails
Collar-beam, (Bottom, 096)	63 x 165 mm	None	Machine-sawn (circular kerbs)	None	Modern Nails
Strut, (East, 097)	52 x 105 mm	None	Machine-sawn (circular kerbs)	None	Modern Nails
Strut, (West, 098)	52 x 105 mm	None	Machine-sawn (circular kerbs)	None	Modern Nails

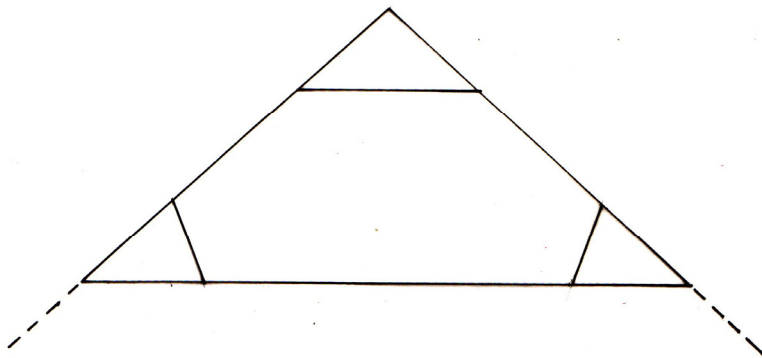


**Fig. 129-12**  
Schematic depiction of truss 12

# 129099-104

## Truss 13

Item	Cross-sectional Dimension	Assembly Marks	Tool Marks	Redundant Features	Fixings
Rafter (East, 099)	65 x 165 mm	None	Machine-sawn (circular kerbs)	None	Modern Nails
Rafter (West, 100)	65 x 165 mm	None	Machine-sawn (circular kerbs)	None	Modern Nails
Collar-beam, (Top, 101)	50 x 150 mm	None	Machine-sawn (circular kerbs)	None	Modern Nails
Collar-beam, (Bottom, 102)	63 x 165 mm	None	Machine-sawn (circular kerbs)	None	Modern Nails
Strut, (East, 103)	52 x 105 mm	None	Machine-sawn (circular kerbs)	None	Modern Nails
Strut, (West, 104)	52 x 105 mm	None	Machine-sawn (circular kerbs)	None	Modern Nails



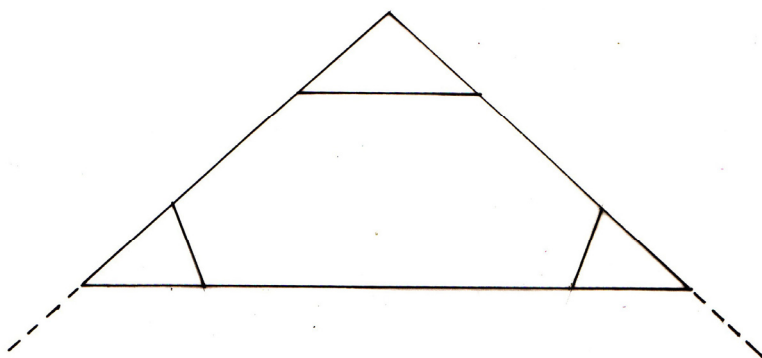
**Fig. 129-13**  
Schematic depiction of truss 13



# 129105-110

## Truss 14

Item	Cross-sectional Dimension	Assembly Marks	Tool Marks	Redundant Features	Fixings
Rafter (East, 105)	65 x 165 mm	None	Machine-sawn (circular kerbs)	None	Modern Nails
Rafter (West, 106)	65 x 165 mm	None	Machine-sawn (circular kerbs)	None	Modern Nails
Collar-beam, (Top, 107)	50 x 150 mm	None	Machine-sawn (circular kerbs)	None	Modern Nails
Collar-beam, (Bottom, 108)	63 x 165 mm	None	Machine-sawn (circular kerbs)	None	Modern Nails
Strut, (East, 109)	52 x 105 mm	None	Machine-sawn (circular kerbs)	None	Modern Nails
Strut, (West, 110)	52 x 105 mm	None	Machine-sawn (circular kerbs)	None	Modern Nails

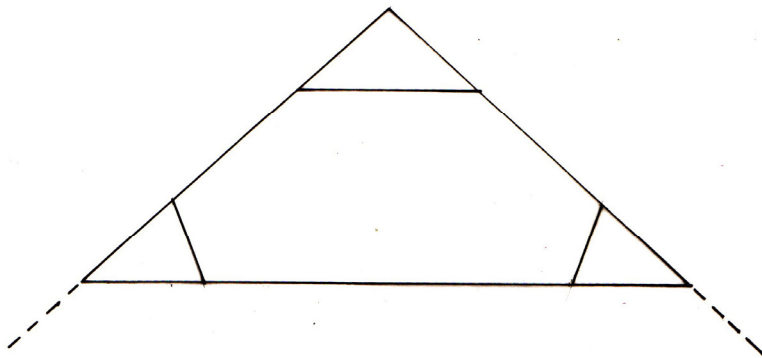


**Fig. 129-14**  
Schematic depiction of truss 14

# 129111-116

## Truss 15

Item	Cross-sectional Dimension	Assembly Marks	Tool Marks	Redundant Features	Fixings
Rafter (East, 111)	65 x 165 mm	None	Machine-sawn (circular kerbs)	None	Modern Nails
Rafter (West, 112)	65 x 165 mm	None	Machine-sawn (circular kerbs)	None	Modern Nails
Collar-beam, (Top, 113)	50 x 150 mm	None	Machine-sawn (circular kerbs)	None	Modern Nails
Collar-beam, (Bottom, 114)	63 x 165 mm	None	Machine-sawn (circular kerbs)	None	Modern Nails
Strut, (East, 115)	52 x 105 mm	None	Machine-sawn (circular kerbs)	None	Modern Nails
Strut, (West, 116)	52 x 105 mm	None	Machine-sawn (circular kerbs)	None	Modern Nails

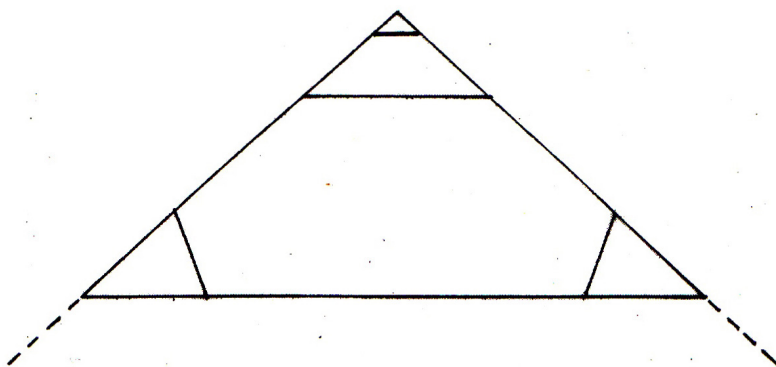


**Fig. 129-15**  
Schematic depiction of truss 15

# 129117-123

## Truss 16

Item	Cross-sectional Dimension	Assembly Marks	Tool Marks	Redundant Features	Fixings
Rafter (East, 117)	65 x 165 mm	None	Machine-sawn (circular kerbs)	None	Modern Nails
Rafter (West, 118)	65 x 165 mm	None	Machine-sawn (circular kerbs)	None	Modern Nails
Collar-beam, (Top, 119)	50 x 150 mm	None	Machine-sawn (circular kerbs)	None	Modern Nails
Collar-beam, (Middle, 120)	63 x 165 mm	None	Machine-sawn (circular kerbs)	None	Modern Nails
Collar-beam, (Bottom, 121)	52 x 105 mm	None	Machine-sawn (circular kerbs)	None	Modern Nails
Strut, (West, 122)	52 x 105 mm	None	Machine-sawn (circular kerbs)	None	Modern Nails
Strut, (West, 123)	52 x 105 mm	None	Machine-sawn (circular kerbs)	None	Modern Nails



**Fig. 129-16**  
Schematic depiction of truss 16

**129124**  
Ridge-Purlin

<b>Item</b>	<b>Cross-sectional Dimension</b>	<b>Assembly Marks</b>	<b>Tool Marks</b>	<b>Redundant Features</b>	<b>Fixings</b>
Ridge-purlin (124)	ca. 40 x 160 mm	None	Machine-sawn (circular kerbs)	None	Modern Nails

# 130060-064

## Truss 1

Item	Cross-sectional Dimension	Assembly Marks	Tool Marks	Redundant Features	Fixings
Rafter (East, 060)	115 x 115 mm	None	Adzed	None	Wooden Pegs
Rafter (West, 061) <sup>181</sup>	125 x 110 mm	None	Adzed	Open Notch <sup>182</sup>	Wooden Pegs
Collar-beam, (Top, 062)	110 x 100 mm	Roman Numerals (I)	Adzed	None	Wooden Pegs
Collar-beam, (Bottom, 063) <sup>183</sup>	102 x 120 mm	None	Machine-sawn (vertical kerbs)	None	Modern Nails
Strut, (East, 064)	62 x 110 mm	None	Machine-sawn (circular kerbs)	None	Modern Nails



**Fig. 130-1**  
View from South showing rafters 060 and 061 and collar-beam 062 of truss 1.

<sup>181</sup> A lean-to roof is nailed to the upper face of rafter 061 (see Fig. 130-24).

<sup>182</sup> An open notch indicates that rafter 061 once possessed a strut comparable to strut 064.

<sup>183</sup> The original tie-beam is cut off and was replaced with 063.



# 130065-071

## Truss 2

Item	Cross-sectional Dimension	Assembly Marks	Tool Marks	Redundant Features	Fixings
Rafter (East, 065)	110 x 95 mm	None	Adzed	None	Wooden Pegs
Auxiliary Rafter (East, 066)	50 x 125 mm	None	Machine-sawn (vertical kerbs)	None	Modern Nails
Rafter (West, 067) <sup>184</sup>	95 x 125 mm	None	Adzed	None	Wooden Pegs
Collar-beam, (Top, 068)	90 x 105 mm	Roman Numerals (II)	Adzed	None	Wooden Pegs
Collar-beam, (Bottom, 069)	105 x 122 mm	None	Machine-sawn (vertical kerbs)	None	Modern Nails
Strut, (East, 070)	77 x 102 mm	None	Machine-sawn (circular kerbs)	None	Modern Nails
Strut, (West, 071)	63 x 100 mm	None	Machine-sawn (circular kerbs)	None	Modern Nails



**Fig. 130-2**  
View from north showing rafters 065 and 067, auxiliary rafter 066 and collar-beam 068 of truss 2.

<sup>184</sup> A lean-to roof is nailed to the upper face of rafter 061 (see Fig. 130-25).

# 130072-079

## Truss 3

Item	Cross-sectional Dimension	Assembly Marks	Tool Marks	Redundant Features	Fixings
Rafter (East, 072)	90 x 95 mm	None	Adzed	None	Wooden Pegs
Auxiliary Rafter (East, 073)	47 x 125 mm	None	Machine-sawn (vertical kerbs)	None	Bolts
Rafter (West, 074) <sup>185</sup>	110 x 95 mm	None	Adzed	None	Wooden Pegs
Collar-beam, (Top, 075)	100 x 75 mm	Roman Numerals (III)	Adzed	None	Wooden Pegs
Collar-beam, (Bottom, 076)	115 x 100 mm	None	Adzed	None	Wooden Pegs
Auxiliary Collar-beam, (Bottom, 077)	50 x 130 mm	None	Machine-sawn (vertical kerbs)	None	Modern Nails
Strut, (East, 078)	63 x 100 mm	None	Machine-sawn (circular kerbs)	None	Modern Nails
Strut, (West, 079)	60 x 108 mm	None	Machine-sawn (vertical kerbs)	None	Modern Nails



**Fig. 130-3**  
View from west showing rafter 072, collar-beam 076 and auxiliary collar-beam 077 of truss 3.

<sup>185</sup> A lean-to roof is nailed to the upper face of rafter 061 (see Fig. 130-26).

# 130080-086

## Truss 4

Item	Cross-sectional Dimension	Assembly Marks	Tool Marks	Redundant Features	Fixings
Rafter (East, 080)	120 x 105 mm	None	Adzed	None	Wooden Pegs
Rafter (West, 081) <sup>186</sup>	110 x 115 mm	None	Adzed	None	Wooden Pegs
Collar-beam, (Top, 082)	100 x 115 mm	Roman Numerals (IIII)	Adzed	None	Wooden Pegs
Collar-beam, (Bottom, 083)	110 x 100 mm	None	Adzed	None	Wooden Pegs
Auxiliary Collar-beam, (Bottom, 084)	50 x 130 mm	None	Machine-sawn (vertical kerbs)	None	Modern Nails
Strut, (East, 085)	65 x 100 mm	None	Machine-sawn (circular kerbs)	None	Modern Nails
Strut, (West, 086)	60 x 105 mm	None	Machine-sawn (circular kerbs)	None	Modern Nails



**Fig. 130-4**  
View from south showing rafter 081 and strut 086 of truss 4.

<sup>186</sup> A lean-to roof is nailed to the upper face of rafter 061 (see Fig. 130.27).

# 130087-093

## Truss 5

Item	Cross-sectional Dimension	Assembly Marks	Tool Marks	Redundant Features	Fixings
Rafter (East, 087)	120 x 125 mm	None	Adzed	None	Wooden Pegs
Rafter (West, 088) <sup>187</sup>	110 x 110 mm	None	Adzed	None	Wooden Pegs
Collar-beam, (Top, 089)	100 x 110 mm	Roman Numerals (V)	Adzed	None	Wooden Pegs
Collar-beam, (Bottom, 090)	115 x 100 mm	None	Adzed	None	Wooden Pegs
Auxiliary Collar-beam, (Bottom, 091)	52 x 113 mm	None	Machine-sawn (circular kerbs)	None	Modern Nails
Strut, (East, 092)	65 x 107 mm	None	Machine-sawn (circular kerbs)	None	Modern Nails
Strut, (West, 093)	62 x 107 mm	None	Machine-sawn (circular kerbs)	None	Modern Nails



**Fig. 130-5**  
View from southwest showing rafter 087 and collar-beam 089 of truss 5.

<sup>187</sup> A lean-to roof is nailed to the upper face of rafter 061 (see Fig. 130.28).



**130094-100**

## Truss 6

Item	Cross-sectional Dimension	Assembly Marks	Tool Marks	Redundant Features	Fixings
Rafter (East, 094)	120 x 125 mm	None	Adzed	None	Wooden Pegs
Rafter (West, 095) <sup>188</sup>	115 x 120 mm	None	Adzed	None	Wooden Pegs
Collar-beam, (Top, 096)	120 x 110 mm	Roman Numerals (VI)	Adzed	None	Wooden Pegs
Collar-beam, (Bottom, 097)	100 x 105 mm	None	Adzed	None	Wooden Pegs
Auxiliary Collar-beam, (Bottom, 098)	50 x 125 mm	None	Machine-sawn (circular kerbs)	None	Modern Nails
Strut, (East, 099)	65 x 100 mm	None	Machine-sawn (circular kerbs)	None	Modern Nails
Strut, (West, 100)	62 x 97 mm	None	Machine-sawn (circular kerbs)	None	Modern Nails

**Fig. 130-6**

View from east showing western rafter (095) and western strut (100) and bottom collar-beams (097 and 098) of truss 6.

<sup>188</sup> A machine-cut board (32 x 85 x ca. 300 mm) is nailed to the southern face of rafter 095. A lean-to roof is nailed to the upper face of rafter 061 (see Fig. 130-29).

# 130101-107

## Truss 7

Item	Cross-sectional Dimension	Assembly Marks	Tool Marks	Redundant Features	Fixings
Rafter (East, 101)	120 x 130 mm	None	Adzed	None	Wooden Pegs
Rafter (West, 102)	115 x 120 mm	None	Adzed	None	Wooden Pegs
Collar-beam, (Top, 103)	90 x 110 mm	Roman Numerals (IIV)	Adzed	None	Wooden Pegs
Collar-beam, (Bottom, 104)	120 x 100 mm	None	Adzed	None	Wooden Pegs
Collar-beam, (Bottom, 105)	50 x 120 mm	None	Machine-sawn (circular kerbs)	None	Modern Nails
Strut, (East, 106)	65 x 100 mm	None	Machine-sawn (circular kerbs)	None	Modern Nails
Strut, (West, 107)	62 x 100 mm	None	Machine-sawn (circular kerbs)	None	Modern Nails



**Fig. 130-7**  
View from southeast showing eastern and western rafters (101 and 102) and upper collar-beam (103) of truss 7.



# 130108-114

## Truss 8

Item	Cross-sectional Dimension	Assembly Marks	Tool Marks	Redundant Features	Fixings
Rafter (East, 108) <sup>189</sup>	120 x 120 mm	None	Adzed	None	Wooden Pegs
Rafter (West, 109)	100 x 120 mm	None	Adzed	None	Wooden Pegs
Collar-beam, (Top, 110)	105 x 120 mm	Roman Numerals (VIII)	Adzed	None	Wooden Pegs
Collar-beam, (Middle, 111)	122 x 100 mm	None	Adzed	None	Wooden Pegs
Collar-beam, (Middle, 112)	50 x 130 mm	None	Machine-sawn (circular kerbs)	None	Modern Nails
Strut, (East, 113)	65 x 100 mm	None	Machine-sawn (circular kerbs)	None	Modern Nails
Strut, (West, 114)	65 x 100 mm	None	Machine-sawn (circular kerbs)	None	Modern Nails



**Fig. 130-8**  
View from southeast showing western rafter (108) and upper collar-beam (112) of truss 8.

<sup>189</sup> Rafter 108 joints into trimmer and possesses a partially reduced cross-sectional area in order to provide space for a dormer.

# 130115-121

## Truss 9

Item	Cross-sectional Dimension	Assembly Marks	Tool Marks	Redundant Features	Fixings
Rafter (East, 115) <sup>190</sup>	115 x 120 mm	None	Adzed	None	Wooden Pegs
Rafter (West, 116)	105 x 120 cm	None	Adzed	None	Wooden Pegs
Collar-beam, (Top, 117)	110 x 115 mm	Roman Numerals (VIII)	Adzed	None	Wooden Pegs
Collar-beam, (Bottom, 118)	110 x 110 mm	None	Adzed	None	Wooden Pegs
Auxiliary Collar-beam, (Bottom, 119)	50 x 120 mm	None	Machine-sawn (circular kerbs)	None	Modern Nails
Strut, (East, 120)	65 x 100 mm	None	Machine-sawn (circular kerbs)	None	Modern Nails
Strut, (West, 121)	70 x 100 mm	None	Machine-sawn (circular kerbs)	None	Modern Nails



**Fig. 130-9**  
View from southeast showing western rafter (116) and upper collar-beam (117) of truss 9.

<sup>190</sup> Rafter 115 possesses a partially reduced cross-sectional area in order to provide space for a dormer.

# 130122-128

## Truss 10

Item	Cross-sectional Dimension	Assembly Marks	Tool Marks	Redundant Features	Fixings
Rafter (East, 122)	110 x 115 mm	None	Adzed	None	Wooden Pegs
Rafter (West, 123)	95 x 115 mm	None	Adzed	None	Wooden Pegs
Collar-beam, (Top, 124)	70 x 100 mm	Roman Numerals (XI)	Adzed, Pit-sawn	None	Wooden Pegs
Collar-beam, (Bottom, 125)	120 x 115 mm	None	Adzed	None	Wooden Pegs
Auxiliary Collar-beam, (Middle, 126)	53 x 125 x mm	None	Machine-sawn (circular kerbs)	None	Bolts
Strut, (East, 127)	65 x 100 mm	None	Machine-sawn (circular kerbs)	None	Modern Nails
Strut, (West, 128)	65 x 100 mm	None	Machine-sawn (circular kerbs)	None	Modern Nails



**Fig. 130-10**  
View from south showing eastern rafter (122) and upper collar-beam (124) of truss 10.

# 130129-135

## Truss 11

Item	Cross-sectional Dimension	Assembly Marks	Tool Marks	Redundant Features	Fixings
Rafter (East, 129)	115 x 115 mm	None	Adzed	None	Wooden Pegs
Rafter (West, 130) <sup>191</sup>	115 x 125 mm	None	Adzed	None	Wooden Pegs
Collar-beam, (Top, 131)	80 x 115 mm	Roman Numerals (X)	Adzed, Pit-sawn	None	Wooden Pegs
Collar-beam, (Bottom, 132)	93 x 125 mm	None	Adzed	None	Wooden Pegs
Auxiliary Collar-beam, (Bottom, 133)	53 x 120 mm	None	Machine-sawn (circular kerbs)	None	Modern Nails
Strut, (East, 134)	63 x 100 mm	None	Machine-sawn (circular kerbs)	None	Modern Nails
Strut, (West, 135)	65 x 100 mm	None	Machine-sawn (circular kerbs)	None	Modern Nails



**Fig. 130-11**  
View from west showing eastern and western rafter (129 and 130) of truss 11.

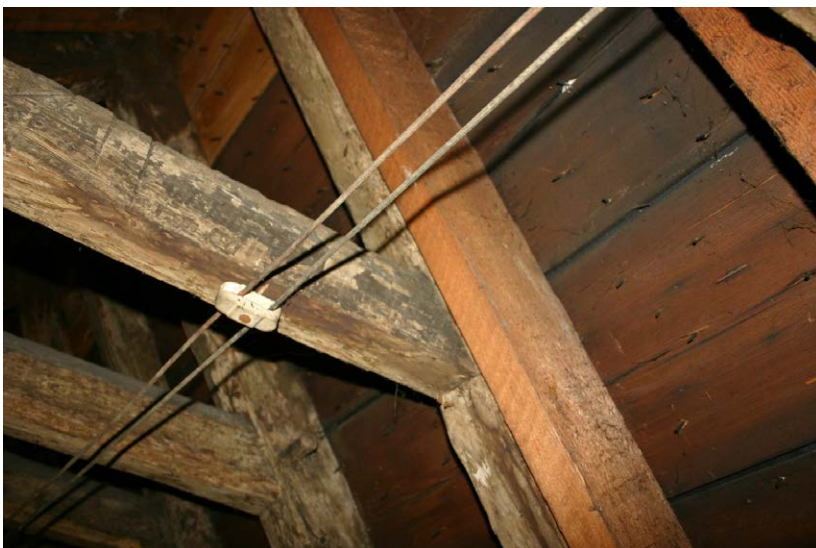
<sup>191</sup> The northern and southern hip-rafter belonging to a double-pitched roof meet over the upper face of rafter 130.



# 130136-143

## Truss 12

Item	Cross-sectional Dimension	Assembly Marks	Tool Marks	Redundant Features	Fixings
Rafter (East, 136)	110 x 110 mm	None	Adzed	None	Wooden Pegs
Auxiliary Rafter (East, 137)	75 x 55 mm	None	Machine-sawn (circular kerbs)	None	Modern Nails
Rafter (West, 138)	95 x 120 mm	None	Adzed	None	None
Collar-beam, (Top, 139)	70 x 120 mm	Roman Numerals (XII)	Adzed, Pit-sawn	None	Wooden Pegs
Collar-beam, (Bottom, 140)	115 x 100 mm	None	Adzed	None	Wooden Pegs
Auxiliary Collar-beam, (Bottom, 141)	50 x 120 mm	None	Machine-sawn (circular kerbs)	None	Bolts
Strut, (East, 142)	60 x 110 mm	None	Machine-sawn (circular kerbs)	None	Modern Nails
Strut, (West, 143)	65 x 100 mm	None	Machine-sawn (circular kerbs)	None	Modern Nails



**Fig. 130-12**  
View from southwest showing eastern rafter (136), eastern auxiliary rafter (137) and upper collar-beam (139) of truss 12.

# 130144-151

## Truss 13

Item	Cross-sectional Dimension	Assembly Marks	Tool Marks	Redundant Features	Fixings
Rafter (East, 144)	100 x 115 mm	None	Adzed	None	Wooden Pegs
Auxiliary Rafter (East, 145)	100 x 115 mm	None	Machine-sawn (circular kerbs)	None	Modern Nails
Rafter (West, 146)	115 x 120 mm	None	Adzed	None	Modern Nails
Collar-beam, (Top, 147)	80 x 95 mm	Roman Numerals (IIIX)	Adzed, Pit-sawn	None	Wooden Pegs
Collar-beam, (Bottom, 148)	105 x 110 mm	None	Adzed	None	Wooden Pegs
Auxiliary Collar-beam, (Bottom, 149)	50 x 125 mm	None	Machine-sawn (circular kerbs)	None	Modern Nails
Strut, (East, 150)	63 x 10 mm	None	Machine-sawn (circular kerbs)	None	Modern Nails
Strut, (West, 151)	63 x 10 mm	None	Machine-sawn (circular kerbs)	None	Modern Nails



**Fig. 130-13**  
View from east showing western rafter (146) and upper collar-beam (147) of truss 13.



# 130152-158

## Truss 14

Item	Cross-sectional Dimension	Assembly Marks	Tool Marks	Redundant Features	Fixings
Rafter (East, 152)	105 x 110 mm	None	Adzed	None	Wooden Pegs
Rafter (West, 153)	110 x 120 mm	None	Adzed	None	Modern Nails
Collar-beam, (Top, 154)	95 x 145 mm	Roman Numerals (IIIIIX)	Adzed, Pit-sawn	None	Wooden Pegs
Collar-beam, (Bottom, 155)	115 x 125 mm	None	Adzed	None	Wooden Pegs
Auxiliary Collar-beam, (Bottom, 156)	110 x 125 mm	None	Machine-sawn (circular kerbs)	None	Modern Nails
Strut, (East, 157)	65 x 100 mm	None	Machine-sawn (circular kerbs)	None	Modern Nails
Strut, (West, 158)	63 x 100 mm	None	Machine-sawn (circular kerbs)	None	Modern Nails



**Fig. 130-14**  
View from southeast showing upper collar-beam (154) and eastern and western rafters (152 and 153) of truss 14.

# 130159-164

## Truss 15

Item	Cross-sectional Dimension	Assembly Marks	Tool Marks	Redundant Features	Fixings
Rafter (East, 159)	105 x 120 mm	None	Adzed	None	Wooden Pegs
Rafter (West, 160)	90 x 130 mm	None	Adzed	None	Modern Nails
Collar-beam, (Top, 161)	75 x 120 mm	Roman Numerals (XV)	Adzed, Pit-sawn	None	Wooden Pegs
Collar-beam, (Bottom, 162)	95 x 95 mm	None	Adzed	None	Wooden Pegs
Strut, (East, 163)	62 x 100 mm	None	Machine-sawn (circular kerbs)	None	Modern Nails
Strut, (West, 164)	62 x 100 mm	None	Machine-sawn (circular kerbs)	None	Modern Nails



**Fig. 130-15**  
View from southeast showing western rafter (160) and upper collar-beam (161) of truss 15.

# 130165-171

## Truss 16

Item	Cross-sectional Dimension	Assembly Marks	Tool Marks	Redundant Features	Fixings
Rafter (East, 165)	110 x 110 mm	None	Adzed	None	Wooden Pegs
Rafter (West, 166)	110 x 120 mm	None	Adzed	None	Wooden Pegs
Auxiliary Rafter (West, 167)	110 x 120 mm	None	Machine-sawn (circular kerbs)	None	Modern Nails
Collar-beam, (Top, 168)	70 x 110 mm	Roman Numerals (IXV)	Adzed, Pit-sawn	None	Wooden Pegs
Collar-beam, (Bottom, 169)	95 x 110 mm	None	Adzed	None	Wooden Pegs
Strut, (East, 170)	62 x 100 mm	None	Machine-sawn (circular kerbs)	None	Modern Nails
Strut, (West, 171)	65 x 105 mm	None	Machine-sawn (circular kerbs)	None	Modern Nails



**Fig. 130-16**  
View from southwest showing eastern rafter (165) and upper collar-beam (168) of truss 16.

# 130172-178

## Truss 17

Item	Cross-sectional Dimension	Assembly Marks	Tool Marks	Redundant Features	Fixings
Rafter (East, 172)	105 x 110 mm	None	Adzed	None	Wooden Pegs
Rafter (West, 173)	80 x 120 mm	None	Adzed	None	Wooden Pegs
Auxiliary Rafter (West, 174)	110 x 120 mm	None	Machine-sawn (circular kerbs)	None	Modern Nails
Collar-beam, (Top, 175)	90 x 100 mm	Roman Numerals (IIXV)	Adzed	None	Wooden Pegs
Collar-beam, (Bottom, 176)	110 x 115 mm	None	Adzed	None	Wooden Pegs
Strut, (East, 177)	63 x 100 mm	None	Machine-sawn (circular kerbs)	None	Modern Nails
Strut, (West, 178)	60 x 100 mm	None	Machine-sawn (circular kerbs)	None	Modern Nails



**Fig. 130-17**  
View from southeast showing western rafter (173), western auxiliary rafter (174) and upper collar-beam (175) of truss 17.



# 130179-184

## Truss 18

Item	Cross-sectional Dimension	Assembly Marks	Tool Marks	Redundant Features	Fixings
Rafter (East, 179) <sup>192</sup>	100 x 115 mm	None	Adzed	None	Wooden Pegs
Rafter (West, 180)	110 x 120 mm	None	Adzed	None	Wooden Pegs
Collar-beam, (Top, 181)	80 x 110 mm	Roman Numerals (XVIII)	Adzed	None	Wooden Pegs
Collar-beam, (Bottom, 182)	105 x 120 mm	None	Adzed	None	Wooden Pegs
Strut, (East, 183)	63 x 100 mm	None	Machine-sawn (circular kerbs)	None	Modern Nails
Strut, (West, 184)	63 x 100 mm	None	Machine-sawn (circular kerbs)	None	Modern Nails



**Fig. 130-18**  
View from south showing eastern rafter (179) and upper collar-beam (181) of truss 18.

<sup>192</sup> Rafter 179 possesses a partially reduced cross-sectional area in order to provide space for a dormer.



**130185-192**

## Truss 19

Item	Cross-sectional Dimension	Assembly Marks	Tool Marks	Redundant Features	Fixings
Rafter (East, 185) <sup>193</sup>	105 x 105 mm	None	Adzed	None	Wooden Pegs
Auxiliary Rafter (East, 186)	75 x 55 mm	None	Machine-sawn (circular kerbs)	None	Modern Nails
Rafter (West, 187)	105 x 105 mm	None	Adzed	None	Wooden Pegs
Auxiliary Rafter (West, 188)	110 x 120 mm	None	Machine-sawn (circular kerbs)	None	Modern Nails
Collar-beam, (Top, 189)	100 x 110 mm	Roman Numerals (XIX)	Adzed	None	Wooden Pegs
Collar-beam, (Bottom, 190)	100 x 115 mm	None	Adzed	None	Wooden Pegs
Strut, (East, 191)	63 x 10 mm	None	Machine-sawn (circular kerbs)	None	Modern Nails
Strut, (West, 192)	63 x 10 mm	None	Machine-sawn (circular kerbs)	None	Modern Nails

**Fig. 130-19**

View from southeast showing eastern and western rafters (185 and 187), eastern and western auxiliary rafters (186 and 188) and upper collar-beam (189) of truss 19.

<sup>193</sup> Rafter 185 possesses a partially reduced cross-sectional area in order to provide space for a dormer.

**130193-201**  
Truss 20

Item	Cross-sectional Dimension	Assembly Marks	Tool Marks	Redundant Features	Fixings
Rafter (East, 193)	110 x 110 mm	None	Adzed	None	Wooden Pegs
Auxiliary Rafter (East, 194)	75 x 55 mm	None	Machine-sawn (circular kerbs)	None	Modern Nails
Rafter (West, 195)	110 x 110 mm	None	Adzed	None	Wooden Pegs
Auxiliary Rafter (West, 196)	110 x 120 mm	None	Machine-sawn (circular kerbs)	None	Modern Nails
Collar-beam, (Top, 197)	100 x 105 mm	Roman Numerals (XX)	Adzed	None	Wooden Pegs
Collar-beam, (Bottom, 198)	115 x 130 mm	None	Adzed	None	Wooden Pegs
Auxiliary Collar-beam, (Bottom, 199)	55 x 125 mm	None	Machine-sawn (circular kerbs)	None	Modern Nails
Strut, (East, 200)	62 x 103 mm	None	Machine-sawn (circular kerbs)	None	Modern Nails
Strut, (West, 201)	62 x 103 mm	None	Machine-sawn (circular kerbs)	None	Modern Nails



**Fig. 130-20**  
View from southeast showing eastern and western rafters (193 and 195), eastern and western auxiliary rafters (194 and 196) and upper collar-beam (197) of truss 20.

# 130202-208

## Truss 21

Item	Cross-sectional Dimension	Assembly Marks	Tool Marks	Redundant Features	Fixings
Rafter (East, 202)	110 x 120 mm	None	Adzed	None	Wooden Pegs
Rafter (West, 203)	110 x 120 mm	None	Adzed	None	Wooden Pegs
Collar-beam, (Top, 204)	75 x 100 mm	None	Machine-sawn (circular kerbs)	None	Modern Nails
Collar-beam, (Bottom, 205)	115 x 125 mm	None	Adzed	None	Wooden Pegs
Collar-beam, (Bottom, 206)	50 x 125 mm	None	Machine-sawn (circular kerbs)	None	Modern Nails
Strut, (East, 207)	63 x 100 mm	None	Machine-sawn (circular kerbs)	None	Modern Nails
Strut, (West, 208)	63 x 100 mm	None	Machine-sawn (circular kerbs)	None	Modern Nails



**Fig. 130-21**  
View from south showing eastern rafter (202) and upper collar-beam (204) of truss 21.

# 130209-217

## Truss 22

Item	Cross-sectional Dimension	Assembly Marks	Tool Marks	Redundant Features	Fixings
Rafter (East, 209)	110 x 110 mm	None	Adzed	None	Wooden Pegs
Auxiliary Rafter (East, 210)	75 x 100 mm	None	Machine-sawn (circular kerbs)	None	Modern Nails
Rafter (West, 211)	100 x 125 mm	None	Adzed	None	Wooden Pegs
Auxiliary Rafter (West, 212)	110 x 120 mm	None	Machine-sawn (circular kerbs)	None	Modern Nails
Collar-beam, (Top, 213)	110 x 100 mm	Roman Numerals (XX)	Adzed	None	Wooden Pegs
Collar-beam, (Bottom, 214)	95 x 100 mm	None	Adzed	None	Wooden Pegs
Auxiliary Collar-beam, (Bottom, 215)	50 x 125 mm	None	Machine-sawn (circular kerbs)	None	Modern Nails
Strut, (East, 216)	63 x 100 mm	None	Machine-sawn (circular kerbs)	None	Modern Nails
Strut, (West, 217)	63 x 100 mm	None	Machine-sawn (circular kerbs)	None	Modern Nails



**Fig. 130-22**  
View from northeast showing western rafter (211), western auxiliary rafter (212) and upper collar-beam (213) of truss 22.

# 130218-220

## Truss 23

Item	Cross-sectional Dimension	Assembly Marks	Tool Marks	Redundant Features	Fixings
Rafter (East, 218)	110 x 110 cm	None	Adzed	None	Wooden Pegs
Collar-beam, (Bottom, 219)	105 x 110 mm	Not ascertainable	Adzed	None	Wooden Pegs
Strut, (East, 220)	63 x 100 mm	None	Machine-sawn (circular kerbs)	None	Modern Nails



**Fig. 130-23**  
View from west showing eastern rafter (218), collar-beam (219) and eastern strut (220) of truss 23.



**130221**  
Truss 1

Item	Cross-sectional Dimension	Assembly Marks	Tool Marks	Redundant Features	Fixings
Lean-to Frame (West, 221)	See Fig. 130-24	None	Adzed, Pit-sawn	Not fully ascertainable	Handmade Nails



**Fig. 130-24**  
View from east showing lean-to frame of truss 1.

**130222**  
Truss 2

Item	Cross-sectional Dimension	Assembly Marks	Tool Marks	Redundant Features	Fixings
Lean-to Frame (West, 222)	See Fig. 130-25	None	Adzed, Pit-sawn	None	Handmade Nails



**Fig. 130-25**  
View from east showing lean-to frame of truss 2 (first frame from right).

**130223**

Truss 3

Item	Cross-sectional Dimension	Assembly Marks	Tool Marks	Redundant Features	Fixings
Lean-to Frame (West, 223)	See Fig. 130-26	None	Adzed, Pit-sawn	None	Handmade Nails



**Fig. 130-26**  
View from east showing lean-to frame of truss 3 (second frame from top).

**130224**  
Truss 4

Item	Cross-sectional Dimension	Assembly Marks	Tool Marks	Redundant Features	Fixings
Lean-to Frame (West, 224)	See Fig. 130-27	None	Adzed, Pit-sawn	None	Handmade Nails



**Fig. 130-27**  
View from east showing lean-to frame of truss 4 (second frame from left).

**130225**  
Truss 5

Item	Cross-sectional Dimension	Assembly Marks	Tool Marks	Redundant Features	Fixings
Lean-to Frame (West, 225)	See Fig. 130-28	None	Adzed, Pit-sawn	None	Handmade Nails



**Fig. 130-28**  
View from east showing lean-to frame of truss 5 (second frame from left).



**130226**

Truss 6

Item	Cross-sectional Dimension	Assembly Marks	Tool Marks	Redundant Features	Fixings
Lean-to Frame (West, 226)	See Fig. 130-29	None	Adzed, Pit-sawn	None	Handmade Nails



**Fig. 130-29**  
View from east showing lean-to frame of truss 6 (second frame from left).

**130227-8**  
Truss 7

Item	Cross-sectional Dimension	Assembly Marks	Tool Marks	Redundant Features	Fixings
Hip-rafter (North, 227)	See Fig. 130-24	None	Adzed, Pit-sawn	None	Handmade Nails
Hip-rafter (South, 228)	See Fig. 130-24	None	Adzed, Pit-sawn	None	Handmade Nails



**Fig. 130-30**  
View from east showing northern hip-rafter.

# 131053-057

## Truss 1

Item	Cross-sectional Dimension	Assembly Marks	Tool Marks	Redundant Features	Fixings
Rafter (North, 053) <sup>194</sup>	90 x 160 mm	None	Adzed	Lath and Plaster Marks	Wooden Pegs
Rafter (South, 054) <sup>195</sup>	80 x 150 mm	None	Adzed	Lath and Plaster Marks	Wooden Pegs
Collar-beam (Top, 056)	115 x 110 m	None	Adzed	Lath and Plaster Marks	Wooden Pegs
Collar-beam (Bottom, 057) <sup>196</sup>	57 x 155 cm	None	Machine-sawn (vertical kerbs)	None	Nails



**Fig. 131-1**  
View from east showing upper and lower collar-beams (056 and 057) and southern rafter (054) of truss 1.

<sup>194</sup> Rafter 053 meets ridge-purlin 073 at the apex and wall-plates 100 and 101 at its foot.

<sup>195</sup> Rafter 054 meets ridge-purlin 073 at the apex.

<sup>196</sup> A board (065) is nailed to collar-beams 057 and 064, while another board (093) is nailed to collar-beams 057, 064, 072, 079, 085, 091, 099 and 111.

**131058-064**  
Truss 2

Item	Cross-sectional Dimension	Assembly Marks	Tool Marks	Redundant Features	Fixings
Rafter (North, 058) <sup>197</sup>	130 x 130 mm	Roman Numerals (VIII)	Adzed	Lath and Plaster Marks	Wooden Pegs
Rafter (South, 059) <sup>198</sup>	125 x 160 mm	Roman Numerals (VIII)	Adzed	Lath and Plaster Marks	Wooden Pegs
Ashlar-post (South, 060)	130 x 120 mm	None	Adzed	None	Wooden Pegs
Sole-piece (South, 061)	130 x 125 mm	None	Adzed	None	Wooden Pegs
Collar-beam (Top, 062)	100 x 100 mm	None	Adzed	None	Handmade Nails
Collar-beam (Middle, 063)	100 x 90 mm	None	Adzed	Lath and Plaster Marks	Wooden Pegs
Collar-beam (Bottom, 064) <sup>199</sup>	47 x 150 mm	None	Machine-sawn (vertical kerbs)	None	Nails



**Fig. 131-2**  
View from east showing upper collar-beam (062) and southern and northern rafters (058 and 059) of truss 2.

<sup>197</sup> Rafter 059 meets ridge-purlin 073 at the apex and wall-plates 100 and 101 at its foot.

<sup>198</sup> Rafter 058 meets ridge-purlin 073 at the apex.

<sup>199</sup> A board (065) is nailed to collar-beams 057 and 064, while another board 093 is nailed to collar-beams 057, 064, 072, 079, 085, 091, 099 and 111.

**131065**  
Board

Item	Cross-sectional Dimension	Assembly Marks	Tool Marks	Redundant Features	Fixings
Board (065)	See Fig. 131-3	None	Machine-sawn	None	Nails



**Fig. 131-3**  
View from southeast showing board 065.



**131066-072**

## Truss 3

Item	Cross-sectional Dimension	Assembly Marks	Tool Marks	Redundant Features	Fixings
Rafter (North, 066) <sup>200</sup>	130 x 120 mm	Roman Numerals (VIII)	Adzed	Lath and Plaster Marks	Wooden Pegs
Rafter (South, 067) <sup>201</sup>	120 x 120 mm	Roman Numerals (VIII)	Adzed	Lath and Plaster Marks	Wooden Pegs
Ashlar-post (South, 068)	120 x 120. mm	None	Adzed	None	Wooden Pegs
Sole-piece (South, 069)	130 x 130 mm	None	Adzed	None	Wooden Pegs
Collar-beam (Top, 070)	90 x 90 mm	None	Adzed	None	Handmade Nails
Collar-beam (Middle, 071)	100 x 100 mm	None	Adzed	Lath and Plaster Marks	Wooden Pegs
Collar-beam (Bottom, 072) <sup>202</sup>	53 x 160 mm	None	Machine-sawn (vertical kerbs)	None	Nails



**Fig. 131-4**  
View from west showing upper and middle collar-beams (070 and 071) and southern rafter (067) of truss 3.

<sup>200</sup> Rafter 067 meets ridge-purlin 073 at the apex and wall-plates 100 and 101 at its foot

<sup>201</sup> Rafter 066 meets ridge-purlin 073 at the apex. A short furrow-piece marked with lath and plaster marks is nailed to its underside (see Fig. 131-4).

<sup>202</sup> Board 093 is nailed to collar-beams 057, 064, 072, 079, 085, 091, 099 and 111.

**131073**  
Ridge-purlin

Item	Cross-sectional Dimension	Assembly Marks	Tool Marks	Redundant Features	Fixings
Ridge-purlin (West, 073)	See Fig. 131-5	None	Adzed	None	Handmade Nails



**Fig. 131-5**  
View from east showing ridge-purlin (073) of trusses 1-3.

# 131074-079

## Truss 4

Item	Cross-sectional Dimension	Assembly Marks	Tool Marks	Redundant Features	Fixings
Rafter (North, 074) <sup>203</sup>	160 x 150 mm	None <sup>204</sup>	Adzed	Lath and Plaster Marks	Wooden Pegs
Rafter (South, 075)	160 x 150 mm	Roman Numerals (II)	Adzed	Lath and Plaster Marks	Wooden Pegs
Ashlar-post (South, 076)	130 x 120 mm	None	Adzed	None	Wooden Pegs
Sole-piece (South, 077)	130 x 140 mm	None	Adzed	None	Wooden Pegs
Collar-beam (Top, 078)	110 x 110 mm	None	Adzed	Lath and Plaster Marks	Wooden Pegs
Collar-beam (Bottom, 079) <sup>205</sup>	50 x 150 mm	None	Machine-sawn (vertical kerbs)	None	Nails



**Fig. 131-6**  
View from west showing southern rafter (075), sole-piece (077) and ashlar-post (076) of truss 4.

<sup>203</sup> Rafter 075 meets wall-plates 100 and 101 at its foot.

<sup>204</sup> The rafter is partly obstructed, thus not fully ascertainable.

<sup>205</sup> Board 093 is nailed to collar-beams 057, 064, 072, 079, 085, 091, 099 and 111.

**131080-085**

## Truss 5

Item	Cross-sectional Dimension	Assembly Marks	Tool Marks	Redundant Features	Fixings
Rafter (North, 080)	120 x 110 mm	Roman Numerals (IV)	Adzed	Lath and Plaster Marks	Wooden Pegs
Rafter (South, 081) <sup>206</sup>	130 x 140 mm	Roman Numerals (IV)	Adzed	Lath and Plaster Marks	Wooden Pegs
Ashlar-post (South, 082)	130 x 140 mm	None	Adzed	None	Wooden Pegs
Sole-piece (South, 083)	130 x 140 mm	None	Adzed	None	Wooden Pegs
Collar-beam (Top, 084)	90 x 100 mm	None	Adzed	Lath and Plaster Marks	Wooden Pegs
Collar-beam (Bottom, 085) <sup>207</sup>	53 x 152 mm	None	Machine-sawn (vertical kerbs)	None	Nails



**Fig. 131-7**  
View from east showing northern (080) and southern (081) rafter of truss 5.

<sup>206</sup> Rafter 081 meets wall-plates 100 and 101 at its foot, while trimmer (132044) is notched over its back.

<sup>207</sup> Board 092 is nailed to collar-beams 085 and 091, while board 093 is nailed to collar-beams 057, 064, 072, 079, 085, 091, 099 and 111.

**131086-091**  
Truss 6

Item	Cross-sectional Dimension	Assembly Marks	Tool Marks	Redundant Features	Fixings
Rafter (North, 086)	130 x 130 mm	Roman Numerals (V)	Adzed	Lath and Plaster Marks	Wooden Pegs
Rafter (South, 087) <sup>208</sup>	100 x 100 mm	Roman Numerals (V)	Adzed	Lath and Plaster Marks	Wooden Pegs
Ashlar-post (South, 088)	130 x 130 mm	None	Adzed	None	Wooden Pegs
Sole-piece (South, 089)	140 x 150 mm	None	Adzed	None	Wooden Pegs
Collar-beam (Top, 090)	100 x 100 mm	None	Adzed	Lath and Plaster Marks	Wooden Pegs
Collar-beam (Bottom, 091) <sup>209</sup>	50 x 155 mm	None	Machine-sawn (vertical kerbs)	None	Nails



**Fig. 131-8**  
View from south showing northern rafter (086) and upper collar-beam (090) of truss 6.

<sup>208</sup> Rafter 087 connects at its foot to wall-plates 100 and 101, while trimmer 132044 is notched over its back.

<sup>209</sup> Board 092 is nailed to collar-beams 085 and 091, while board 093 is nailed to collar-beams 057, 064, 072, 079, 085, 091, 099 and 111. A metal bar is screwed to collar-beams 091 and 099.



# 131092-093

Board

Item	Cross-sectional Dimension	Assembly Marks	Tool Marks	Redundant Features	Fixings
Board (092)	See Fig. 131-	None	Machine-sawn	None	Nails
Board (093)	See Fig. 131-9	None	Machine-sawn	None	Nails

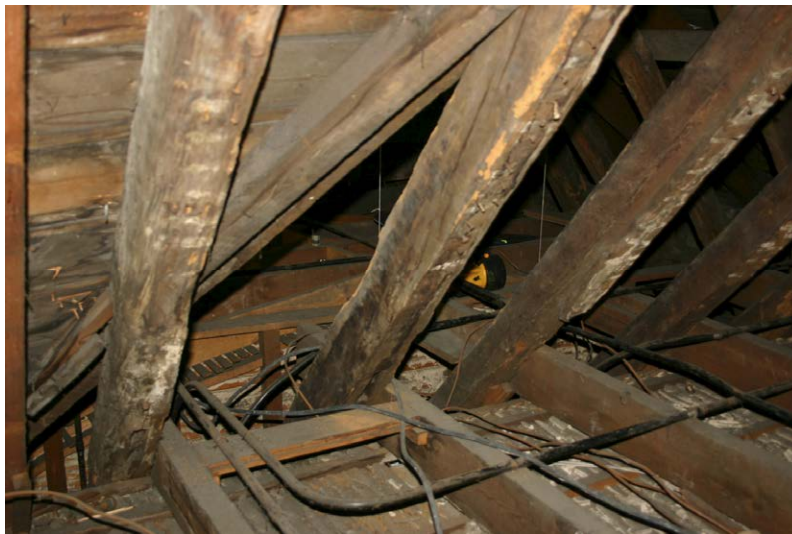


**Fig. 131-9**  
View from east showing board 092  
nailed to collar-beams (085 and  
091) of trusses 5 and 6.

# 131094-099

## Truss 7

Item	Cross-sectional Dimension	Assembly Marks	Tool Marks	Redundant Features	Fixings
Rafter (North, 094) <sup>210</sup>	130 x 130 mm	None	Adzed	Lath and Plaster Marks	Wooden Pegs
Rafter (South, 095)	130 x 150 mm	None	Adzed	Lath and Plaster Marks	Wooden Pegs
Ashlar-post (South, 096)	120 x 120 mm	None	Adzed	None	Wooden Pegs
Sole-piece (South, 097)	120 x 170 mm	None	Adzed	None	Wooden Pegs
Collar-beam (Top, 098)	90 x 100 mm	None	Adzed	Lath and Plaster Marks	Wooden Pegs
Collar-beam (Bottom, 099) <sup>211</sup>	53 x 155 mm	None	Machine-sawn (vertical kerbs)	None	Nails



**Fig. 131-10**  
View from north showing southern rafter (094) and lower collar-beam (098) of truss 7.

<sup>210</sup> Rafter 095 connects at its foot to wall-plates 100 and 101.

<sup>211</sup> Board 092 is nailed to collar-beams 091 and 099, while board 093 is nailed to collar-beams 057, 064, 072, 079, 085, 091, 099 and 111. A metal bar is screwed to collar-beams 091 and 099.

# 131100-101

Wallplates

Item	Cross-sectional Dimension	Assembly Marks	Tool Marks	Redundant Features	Fixings
Wallplate (North, 100)	See Fig. 131-11	None	Adzed	None	Handmade Nails
Wallplate (South, 101)	See Fig. 131-11	None	Adzed	None	Handmade Nails



**Fig. 131-11**  
View from west showing wall-plates  
100 and 101 of trusses 1-7.

# 131102-107

## Truss 8

Item	Cross-sectional Dimension	Assembly Marks	Tool Marks	Redundant Features	Fixings
Rafter (North, 102) <sup>212</sup>	110 x 130 mm	Roman Numerals (III)	Adzed	Lath and Plaster Marks	Wooden Pegs
Rafter (South, 103)	110 x 150 mm	Roman Numerals (III)	Adzed	Lath and Plaster Marks	Wooden Pegs
Ashlar-post (South, 104)	120 x 170 mm	None	Adzed	None	Wooden Pegs
Sole-piece (South, 105)	150 x 150 mm	None	Adzed	None	Wooden Pegs
Collar-beam (Top, 106)	120 x 110 mm	None	Adzed	Lath and Plaster Marks	Wooden Pegs
Collar-beam (Bottom, 107) <sup>213</sup>	55 x 157 mm	None	Machine-sawn (vertical kerbs)	None	Nails



**Fig. 131-12**  
View from south showing northern rafter (102) and upper collar-beam (106) of truss 8.

<sup>212</sup> Attached to rafter 102 are a ledger (128), linking rafters 102 and 114, sloping posts 119 and 120 and strut 122. All items define the dormer.

<sup>213</sup> A metal bar and a 'cross-joist' are fastened to collar-beams 107 and 117.

**131108-113**

## Truss 9

Item	Cross-sectional Dimension	Assembly Marks	Tool Marks	Redundant Features	Fixings
Rafter (North, 108) <sup>214</sup>	100 x 130 mm	Roman Numerals (II)	Adzed	Lath and Plaster Marks	Wooden Pegs
Rafter (South, 109)	130 x 130 mm	Not ascertainable <sup>215</sup>	Adzed	Lath and Plaster Marks	Wooden Pegs
Collar-beam (Top, 110)	90 x 100 m	None	Adzed	Lath and Plaster Marks	Wooden Pegs
Collar-beam (Bottom, 111) <sup>216</sup>	50 x 155 m	None	Machine-sawn (vertical kerbs)	None	Nails
Auxiliary Rafter (North, 112)	110 x 120 mm	None	Machine-sawn (vertical and circular kerbs)	None	Bolts
Auxiliary Rafter (South, 113)	48 x 100 mm	None	Machine-sawn (vertical and circular kerbs)	None	Bolts



**Fig. 131-13**  
View from west showing southern rafter (108) of truss 9.

<sup>214</sup> Rafter 108 was cut off in order to provide space for the dormer. Cutting happened immediately underneath the carpenter's mark. It is thus possible that the numeral '(II)' was damaged in this process.

<sup>215</sup> The northern face of rafter 109 is obstructed by auxiliary rafter 112.

<sup>216</sup> A metal bar and a 'cross-joist' are fastened to collar-beams 107 and 117. The northern end of collar-beam 111 meets this joist.



**131114-118**

## Truss 10

Item	Cross-sectional Dimension	Assembly Marks	Tool Marks	Redundant Features	Fixings
Rafter (North, 114) <sup>217</sup>	110 x 120 mm	Not ascertainable <sup>218</sup>	Adzed	Lath and Plaster Marks	Wooden Pegs
Rafter (South, 115) <sup>219</sup>	100 x 130 mm	Not ascertainable <sup>220</sup>	Adzed	Lath and Plaster Marks	Wooden Pegs
Collar-beam (Top, 116)	110 x 120 mm	None	Adzed	Lath and Plaster Marks	Wooden Pegs
Collar-beam (Bottom, 117) <sup>221</sup>	57 x 180 mm	None	Machine-sawn (vertical kerbs)	None	Nails
Auxiliary Rafter (South, 118)	57 x 180 mm	None	Machine-sawn (vertical kerbs)	None	Nails
Auxiliary Rafter (South, 119)	57 x 180 mm	None	Machine-sawn (vertical kerbs)	None	Nails



**Fig. 131-14**  
View from north showing southern rafter (115), southern auxiliary rafters (118 and 119) and upper collar-beam (117) of truss 10.

<sup>217</sup> Attached to rafter 114 are a ledger (128), which links rafters 102 and 114, as well as sloping posts 124 and 125. All items define the dormer.

<sup>218</sup> The eastern face of rafter 114 is obstructed by auxiliary rafter 119.

<sup>219</sup> Ledger 136, belonging to the southern dormer, links rafters 109 and 115.

<sup>220</sup> Any potential carpenter's marks are not ascertainable because the eastern face of rafter 114 is obstructed by auxiliary rafter 119.

<sup>221</sup> A metal bar and a 'cross-joist' are fastened to collar-beams 107 and 117.

**131119-123**  
Northern Dormer, W-wall

Item	Cross-sectional Dimension	Assembly Marks	Tool Marks	Redundant Features	Fixings
Sloping Post (North, 119)	See Fig. 131-15	None	Machine-sawn	None	Nails
Sloping Post (South, 120)	See Fig. 131-15	None	Machine-sawn	None	Nails
Ledger (121)	See Fig. 131-15	None	Machine-sawn	None	Nails
Strut (122)	See Fig. 131-15	None	Machine-sawn	None	Nails
Panelling, 123)	See Fig. 131-15	None	Machine-sawn	None	Nails



**Fig. 131-15**  
View from west showing the western wall of n-dormer with sloping posts (120 and 121) and ledger (122).

**131124-127**  
Northern Dormer, E-wall

Item	Cross-sectional Dimension	Assembly Marks	Tool Marks	Redundant Features	Fixings
Sloping Post (North, 124)	See Fig. 131-16	None	Machine-sawn	None	Nails
Sloping Post (South, 125)	See Fig. 131-16	None	Machine-sawn	None	Nails
Ledger (126)	See Fig. 131-16	None	Machine-sawn	None	Nails
Panelling, (127)	See Fig. 131-16	None	Machine-sawn	None	Nails



**Fig. 131-16**  
View from northwest showing the eastern wall of n-dormer with sloping posts (125 and 126) and ledger (127).

**131128-135**  
Northern Dormer, S-wall

Item	Cross-sectional Dimension	Assembly Marks	Tool Marks	Redundant Features	Fixings
Ledger (Top, 128)	See Fig. 131-17	None	Machine-sawn	None	Nails
Ledger (Middle, 129)	See Fig. 131-17	None	Machine-sawn	None	Nails
Ledger (Bottom, 130)	See Fig. 131-17	None	Machine-sawn	None	Nails
Sloping Post (West, 131)	See Fig. 131-17	None	Machine-sawn	None	Nails
Sloping Post (Centre West, 132)	See Fig. 131-17	None	Machine-sawn	None	Nails
Sloping Post (Centre East, 133)	See Fig. 131-17	None	Machine-sawn	None	Nails
Sloping Post (East, 134)	See Fig. 131-17	None	Machine-sawn	None	Nails
Panelling, (135)	See Fig. 131-17	None	Machine-sawn	None	Nails



**Fig. 131-17**  
View from west showing the southern wall of n-dormer with sloping posts (132-135) and ledgers (129-131).

**131136-140**  
Southern Dormer, N-wall<sup>222</sup>

Item	Cross-sectional Dimension	Assembly Marks	Tool Marks	Redundant Features	Fixings
Ledger (Top, 136)	See Fig. 131-18	None	Machine-sawn	None	Nails
Ledger (Middle, 137)	See Fig. 131-18	None	Machine-sawn	None	Nails
Sloping Post (East, 138)	See Fig. 131-18	None	Machine-sawn	None	Nails
Sloping Post (West, 139)	See Fig. 131-18	None	Machine-sawn	None	Nails
Panelling, (140)	See Fig. 131-18	None	Machine-sawn	None	Nails



**Fig. 131-18**  
View from northeast showing the northern wall of s-dormer with sloping posts (139 and-140) and ledgers (137 and 138).

<sup>222</sup> The north wall is the only extant part of the dormer (see Fig. 131-17).



# 131141-144

## Truss 11

Item	Cross-sectional Dimension	Assembly Marks	Tool Marks	Redundant Features	Fixings
Rafter (North, 141) <sup>223</sup>	110 x 110 mm	None	Adzed	Lath and Plaster Marks	Wooden Pegs
Rafter (South, 142) <sup>224</sup>	100 x 90 mm	None	Adzed	Lath and Plaster Marks	Wooden Pegs
Collar-beam (Top, 143)	50 x 100 mm	None	Adzed	Lath and Plaster Marks	Wooden Pegs
Collar-beam (Bottom, 144)	53 x 160 mm	None	Machine-sawn (vertical kerbs)	None	Nails



**Fig. 131-19**  
View from north showing southern rafter (142) of truss 11.

<sup>223</sup> Rafter 141 meets ridge-purlin 152 at the apex.

<sup>224</sup> Rafter 142 meets ridge-purlin 152 at the apex, trimmer 153 at mid-height and hip-rafter 154 at its foot.

# 131145-146

## Truss 12

Item	Cross-sectional Dimension	Assembly Marks	Tool Marks	Redundant Features	Fixings
Rafter (North, 145) <sup>225</sup>	80 x 130 cm	None	Adzed	Lath and Plaster Marks	Wooden Pegs
Rafter (South, 146) <sup>226</sup>	130 x 140 cm	None	Adzed	Lath and Plaster Marks	Wooden Pegs



**Fig. 131-20**  
View from north showing southern rafter (147) of truss 12.

<sup>225</sup> Rafter 145 meets ridge-purlin 152 at the apex.

<sup>226</sup> Rafter 146 meets ridge-purlin 152 at the apex and trimmer 153 at its foot.

# 131147-151

## Truss 13

Item	Cross-sectional Dimension	Assembly Marks	Tool Marks	Redundant Features	Fixings
Rafter (North, 147) <sup>227</sup>	70 x 110 mm	None	Adzed	Lath and Plaster Marks	Wooden Pegs
Rafter (South, 148) <sup>228</sup>	150 x 80 mm	None	Adzed	Lath and Plaster Marks	Wooden Pegs
Collar-beam (Bottom A, 149)	55 x 153 mm	None	Machine-sawn (vertical kerbs)	None	Nails
Collar-beam (Bottom B, 150)	53 x 155 mm	None	Machine-sawn (vertical kerbs)	None	Nails
Auxiliary Rafter (North, 151)	45 x 120 mm	None	Machine-sawn (circular kerbs)	None	Handmade Nails



**Fig. 131-21**  
View from west showing northern and southern rafter (148 and 149) of truss 13.

<sup>227</sup> Rafter 147 meets ridge-purlin 152 at the apex.

<sup>228</sup> Rafter 148 meets ridge-purlin 152 at the apex, hip-rafter 154 in the upper quarter and trimmer 153 at the bottom part.

**131152**  
Trusses 11-13

Item	Cross-sectional Dimension	Assembly Marks	Tool Marks	Redundant Features	Fixings
Ridge-purlin (East, 152)	See Fig. 131-22	None	Adzed	None	Handmade Nails



**Fig. 131-22**  
View from east showing ridge-purlin (153) of trusses 11-13

# 131153-154

Trusses 11-13

Item	Cross-sectional Dimension	Assembly Marks	Tool Marks	Redundant Features	Fixings
Trimmer (South, 153)	See Fig. 131-23	None	Adzed	None	Handmade Nails
Hip-Rafter (South, 154)	See Fig. 131-23	None	Adzed	None	Handmade Nails



**Fig. 131-23**  
View from north showing trimmer (154) and hip-rafter (155) of trusses 11-13.



# 132001-003

## Truss 1

Item	Cross-sectional Dimension	Assembly Marks	Tool Marks	Redundant Features	Fixings
Rafter (East, 001) <sup>229</sup>	65 x 170 mm	Not ascertainable <sup>230</sup>	Machine-sawn (vertical kerbs)	None	Bolts
Rafter (West, 002) <sup>231</sup>	65 x 170 mm	Not ascertainable	Machine-sawn (vertical kerbs)	None	Bolts
Collar-beam, 003)	50 x 150 mm	Not ascertainable	Machine-sawn (vertical kerbs)	None	Bolts



**Fig. 132-1**  
View from north showing eastern and western rafters (001 and 002) of truss 1.

<sup>229</sup> Rafter 001 meets wall-plate 069 at its foot.

<sup>230</sup> The couple sits immediately in front of the southern gable wall and there is a theoretical possibility that it possesses assembly marks. Its modern nature, however renders this fairly unlikely.

<sup>231</sup> Rafter 002 meets wall-plates 045, 046, 047 at its foot.

## 132004-006

### Truss 2

Item	Cross-sectional Dimension	Assembly Marks	Tool Marks	Redundant Features	Fixings
Rafter (East, 004) <sup>232</sup>	120 x 140 mm	Not ascertainable <sup>233</sup>	Adzed	None	Wooden Pegs
Rafter (West, 005) <sup>234</sup>	150 x 150 mm	None <sup>235</sup>	Adzed	None	Wooden Pegs
Auxiliary Rafter (West, 006) <sup>236</sup>	110 x 90 mm	None	Machine-sawn (vertical kerbs)	None	Bolts
Collar-beam, 007)	140 x 150 mm	None	Adzed	None	Wooden Pegs



**Fig. 132-2**  
View from northwest showing collar-beam (007) and eastern rafter (004) of truss 2.

<sup>232</sup> Rafter 004 meets wall-plate 069 at its foot.

<sup>233</sup> The couple sits immediately in front of the southern gable wall and there is a possibility that it possesses assembly marks. Given the typical technical details of truss 2, it is likely that the couple possesses marks.

<sup>234</sup> Rafter 005 meets wall-plates 045, 046, 047 at its foot.

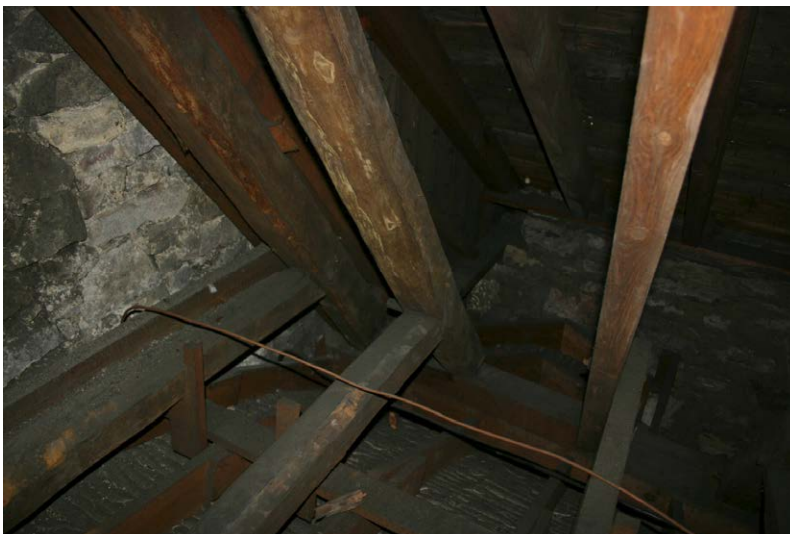
<sup>235</sup> The southern face of the rafter is not visible due to the closeness of the southern gable wall and may possess assembly marks.

<sup>236</sup> Auxiliary rafter 006 meets wall-plates 045, 046, 047 at its foot. This also provides footing to a short board which connects rafters 005 and 008.

# 132007-009

## Truss 3

Item	Cross-sectional Dimension	Assembly Marks	Tool Marks	Redundant Features	Fixings
Rafter (East, 007) <sup>237</sup>	120 x 130 mm	Roman Numerals (I)	Adzed	None	Wooden Pegs
Rafter (West, 008) <sup>238</sup>	130 x 120 mm	Roman Numerals (I)	Adzed	None	Wooden Pegs
Collar-beam, 009)	100 x 120 cm	Roman Numerals (I)	Adzed	None	Wooden Pegs



**Fig. 132-3**  
View from northeast showing collar-beam (009) and western rafter (008) of truss 3.

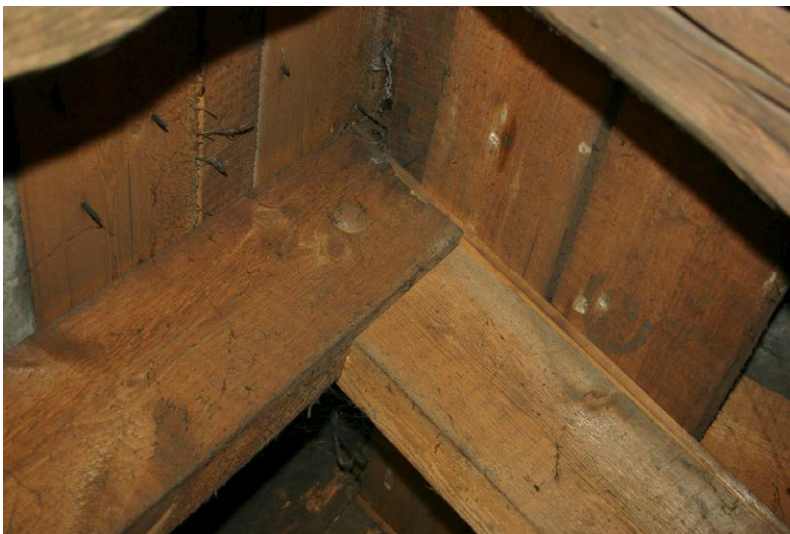
<sup>237</sup> Rafter 007 meets wall-plate 069 at its foot.

<sup>238</sup> Rafter 005 meets wall-plates 045, 046, 047 at its foot.

# 132010-012

Truss 4

Item	Cross-sectional Dimension	Assembly Marks	Tool Marks	Redundant Features	Fixings
Rafter (East, 010) <sup>239</sup>	63 x 167 mm	None	Machine-sawn (vertical kerbs)	None	Bolts
Rafter (West, 011) <sup>240</sup>	63 x 167 mm	None	Machine-sawn (vertical kerbs)	None	Bolts
Collar-beam, 012)	53 x 153 mm	None	Machine-sawn (vertical and circular kerbs)	None	Bolts



**Fig. 132-4**  
View from north showing eastern and western rafter (010 and 011) of truss 4.

<sup>239</sup> Rafter 010 meets wall-plate 069.

<sup>240</sup> Rafter 011 meets wall-plates 045, 046, 047.

**132013-017**  
Truss 5

Item	Cross-sectional Dimension	Assembly Marks	Tool Marks	Redundant Features	Fixings
Rafter (East, 013) <sup>241</sup>	120 x 130 mm	Roman Numerals (II) <sup>242</sup>	Adzed	None	Wooden Pegs
Rafter (West, 014) <sup>243</sup>	110 x 160 mm	Roman Numerals (III)	Adzed	None	Wooden Pegs
Collar-beam, (Top, 015)	65 x 90 mm	None	Pit-sawn	None	Handmade Nails
Collar-beam, (Bottom, 016)	90 x 100 mm	Roman Numerals (II)	Adzed	None	Wooden Pegs
Auxiliary Rafter (West, 017) <sup>244</sup>	70 x 110 mm	None	Pit-sawn	None	Handmade Nails



**Fig. 132-5**  
View from west showing eastern rafter (013) and high and low collar-beams (015 and 016) of truss 5.

<sup>241</sup> Rafter 013 meets wall-plate 069.

<sup>242</sup> The carpenter's mark is partially concealed by the collar-beam and should be read as III.

<sup>243</sup> Rafter 014 meets wall-plates 045, 046, 047.

<sup>244</sup> Auxiliary rafter 017 meets wall-plates 045, 046, 047.



**132018-023**

## Truss 6

Item	Cross-sectional Dimension	Assembly Marks	Tool Marks	Redundant Features	Fixings
Rafter (East, 018) <sup>245</sup>	100 x 120 mm	Roman Numerals (V)	Adzed	None	Wooden Pegs
Rafter (West, 019) <sup>246</sup>	110 x 100 mm	Roman Numerals (V)	Adzed	None	Wooden Pegs
Collar-beam, (Top, 020)	90 x 100 mm	None	Adzed, pit-sawn	None	Handmade Nails
Collar-beam, (Middle, 021)	55 x 90 mm	None	Machine-sawn (vertical kerbs)	None	Nails
Collar-beam, (Bottom, 022)	100 x 110 mm	None	Adzed	None	Wooden Pegs
Auxiliary Rafter (East, 023)	70 x 100 cm	None	Machine-sawn (vertical kerbs)	None	Nails



**Fig. 132-6**  
View from west showing eastern rafter (018), auxiliary rafter (023) and high and low collar-beams (021 and 022) of truss 6.

<sup>245</sup> Rafter 018 meets wall-plate 069 at its foot and ridge-purlin 043 at the apex.

<sup>246</sup> Rafter 019 meets wall-plates 045, 046, 047 at its foot and ridge-purlin 043 at the apex.

**132024-030**

## Truss 7

Item	Cross-sectional Dimension	Assembly Marks	Tool Marks	Redundant Features	Fixings
Rafter (East, 024) <sup>247</sup>	130 x 130 mm	None	Adzed	None	Wooden Pegs
Rafter (West, 025) <sup>248</sup>	100 x 110 mm	Probably None <sup>249</sup>	Adzed	None	Wooden Pegs
Collar-beam, (Top, 026)	95 x 95 mm	None	Adzed, pit-sawn	None	Handmade Nails
Collar-beam, (Middle, 027)	50 x 90 mm	None	Machine-sawn (vertical kerbs)	None	Nails
Collar-beam, (Bottom, 028)	50 x 155 mm	None	Machine-sawn (vertical kerbs)	None	Nails
Auxiliary Rafter (East, 029)	60 x 110 mm	None	Machine-sawn (vertical kerbs)	None	Nails
Auxiliary Rafter (West, 030)	60 x 110 mm	None	Machine-sawn (vertical kerbs)	None	Nails



**Fig. 132-7**  
View from west showing middle and low collar-beams (027 and 028) and eastern rafter (024) of truss 7.

<sup>247</sup> Rafter 024 meets wall-plate 069 at its foot and ridge-purlin 043 at the apex.

<sup>248</sup> Rafter 025 meets wall-plates 045, 046, 047 at its foot and ridge-purlin 043 at the apex.

<sup>249</sup> The southern face of rafter 271 is concealed by auxiliary rafter 276. Given that rafter 024 does not show any numerals, it is unlikely that rafter 025 possesses any marks.

# 132031-032

## Truss 8

Item	Cross-sectional Dimension	Assembly Marks	Tool Marks	Redundant Features	Fixings
Rafter (West, 031) <sup>250</sup>	100 x 120 mm	None	Adzed	None	Nails
Collar-beam (032)	52 x 155 mm	None	Machine-sawn (vertical kerbs)	None	Nails



**Fig. 132-8**  
View from east showing collar-beam (032) and western rafter (031) of truss 8.

<sup>250</sup> Rafter 031 meets wall-plates 045, 046, 047 at its foot and ridge-purlin 043 at the apex.

**132033-037**  
Hip-Truss East

Item	Cross-sectional Dimension	Assembly Marks	Tool Marks	Redundant Features	Fixings
Hip-Rafter (East, 033) <sup>251</sup>	130 x 95 mm	None	Adzed, pit-sawn	None	Handmade Nails
Rafter (East, 034)	120 x 100 mm	None	Machine-sawn (circular kerbs)	None	Nails
Rafter (East, 035)	50 x 100 mm	None	Machine-sawn (circular kerbs)	None	Nails
Rafter (East, 036)	50 x 100 mm	None	Machine-sawn (circular kerbs)	None	Nails
Rafter (East, 036)	50 x 100 mm	None	Machine-sawn (circular kerbs)	None	Nails
Rafter (East, 037)	50 x 100 mm	Roman Numerals (III)	Machine-sawn (circular kerbs)	None	Nails



**Fig. 132-9**  
View from south showing eastern hip-rafter (033) and rafter (034)

<sup>251</sup> Rafter 033 meets the wallhead at its foot and ridge-purlin 043 at the apex.

## 132039-042

Hip-Truss West

Item	Cross-sectional Dimension	Assembly Marks	Tool Marks	Redundant Features	Fixings
Hip-Rafter (West, 039) <sup>252</sup>	Triangular (Base-length ca. 100 mm)	None	Adzed, pit-sawn	None	Handmade Nails
Rafter (West, 040)	100 x 120 mm	None	Machine-sawn (circular kerbs)	None	Handmade Nails
Rafter (West, 041)	100 x 100 mm	None	Machine-sawn (circular kerbs)	None	Handmade Nails
Rafter (West, 042)	100 x 100 mm	None	Machine-sawn (circular kerbs)	None	Handmade Nails



**Fig. 132-10**  
View from south showing western hip-rafter (039) and rafters 041 and 042.

<sup>252</sup> Rafter 039 meets wall-plates 045, 046, 047 at its foot and ridge-purlin 043 at the apex.



**132043**  
Ridge-purlin

Item	Cross-sectional Dimension	Assembly Marks	Tool Marks	Redundant Features	Fixings
Ridge-purlin (043) <sup>253</sup>	See Fig. 132-11	None	Adzed	None	Handmade Nails

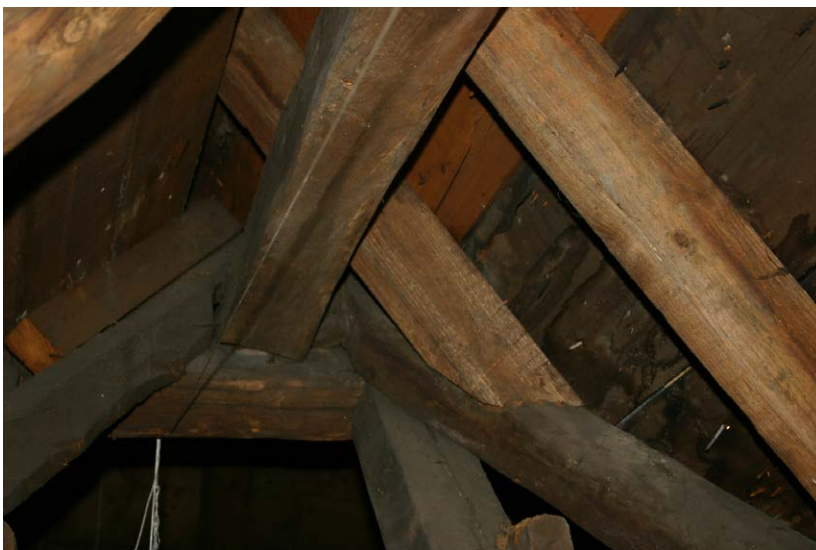


**Fig. 132-11**  
View from south showing ridge-purlin 043.

<sup>253</sup> The ridge-purlin rests on a trimmer that is notched over the southern rafters of trusses 5 (131081) and 6 (131087) of the adjacent roof (component 131).

**132044**  
Trimmer

Item	Cross-sectional Dimension	Assembly Marks	Tool Marks	Redundant Features	Fixings
Trimmer (044)	100 x 100 mm	None	Adzed	None	Handmade Nails



**Fig. 132-12**  
View from south showing trimmer (044).

## 132045-047

Wall-plates

Item	Cross-sectional Dimension	Assembly Marks	Tool Marks	Redundant Features	Fixings
Wallplate (West, 045)	75 x 175 mm	None	Machine-sawn (Vertical kerbs)	None	Bolts
Wallplate (Middle, 046)	75 x 175 mm	None	Machine-sawn (Vertical kerbs)	None	Bolts
Wallplate (East, 047) <sup>254</sup>	75 x 175 mm	None	Machine-sawn (Vertical kerbs)	None	Bolts



**Fig. 132-13**  
View from north showing wall-plates (045-047).

<sup>254</sup> A short board sits on wall-plates 046 and 047 and linkings rafters 005 and 008. This board carries a second board set at an angle of 90°, which serves as substructure for the paneling of the southern gable-wall.

**132048**  
Lean-to Roof, Rafter 1

Item	Cross-sectional Dimension	Assembly Marks	Tool Marks	Redundant Features	Fixings
Rafter (048) <sup>255</sup>	105 x 125 mm	None	Machine-sawn (vertical and circular kerbs)	None	Nails



**Fig. 132-14**  
View from northeast showing rafter  
048

<sup>255</sup> The rafter forms the substructure for the gable-panelling. Its foot joins into a wall-plate which covers the wall-head while its apex joins two boards which run between the southern gable-wall and the northern trimmer.

**132049-050**  
Lean-to Roof, Rafter 2

Item	Cross-sectional Dimension	Assembly Marks	Tool Marks	Redundant Features	Fixings
Rafter (049) <sup>256</sup>	62 x 170 mm	None	Machine-sawn (vertical and circular kerbs)	None	Nails
Board (050)	See Fig. 132-15	None	Machine-sawn (circular kerbs)	None	Nails



**Fig. 132-15**  
View from northeast showing rafter 049 and board 050.

<sup>256</sup> The rafter-foot joins into a wallplate which covers the wallhead while its apex joins two boards which run between the southern gable-wall and the northern trimmer.



**132051-052**  
Lean-to Roof, Rafter 3

Item	Cross-sectional Dimension	Assembly Marks	Tool Marks	Redundant Features	Fixings
Rafter (051) <sup>257</sup>	62 x 170 mm	None	Machine-sawn (vertical and circular kerbs)	None	Nails
Board (052)	See Fig. 132-16	None	Machine-sawn (circular kerbs)	None	Nails



**Fig. 132-16**  
View from northeast showing rafter 051 and board 052.

<sup>257</sup> The rafter-foot joins into a wallplate which covers the wallhead while its apex joins two boards which run between the southern gable-wall and the northern trimmer.

# 132053-054

## Lean-to Roof, Rafter 4

Item	Cross-sectional Dimension	Assembly Marks	Tool Marks	Redundant Features	Fixings
Rafter (053) <sup>258</sup>	65 x 170 mm	None	Machine-sawn (vertical and circular kerbs)	None	Nails
Board (054)	Comparable to board 050 (See Fig. 132-15)	None	Machine-sawn (circular kerbs)	None	Nails



**Fig. 132-17**  
View from west showing rafter 053.

<sup>258</sup> The rafter-foot joins into a wall-plate which covers the wallhead, while its apex joins two boards which run between the southern gable-wall and the northern trimmer.

**132055-056**  
Lean-to Roof, Rafter 5

Item	Cross-sectional Dimension	Assembly Marks	Tool Marks	Redundant Features	Fixings
Rafter (055) <sup>259</sup>	65 x 168 mm	None	Machine-sawn (vertical and circular kerbs)	None	Nails
Board (056)	Comparable to board 050 (See Fig. 132-15)	None	Machine-sawn (circular kerbs)	None	Nails



**Fig. 132-18**  
View from west showing rafter 055.

<sup>259</sup> The rafter-foot joins into a wallplate which covers the wallhead while its apex joins two boards which run between the southern gable-wall and the northern trimmer.

**132057-058**  
Lean-to Roof, Rafter 6

Item	Cross-sectional Dimension	Assembly Marks	Tool Marks	Redundant Features	Fixings
Rafter (057) <sup>260</sup>	65 x 170 cm	None	Machine-sawn (vertical and circular kerbs)	None	Nails
Board (058)	See Fig. 132-19	None	Machine-sawn (circular kerbs)	None	Nails



**Fig. 132-19**  
View from northeast showing rafter 057 and board 058.

<sup>260</sup> The rafter-foot joins into a wall-plate which covers the wallhead while its apex joins two boards which run between the southern gable-wall and the northern trimmer.

**132059**  
Lean-to Roof, Rafter 7

Item	Cross-sectional Dimension	Assembly Marks	Tool Marks	Redundant Features	Fixings
Rafter (059) <sup>261</sup>	105 x 125 mm	None	Machine-sawn (circular kerbs)	None	Nails



**Fig. 132-20**  
View from southeast showing rafter 059.

<sup>261</sup> The rafter-foot joins into a wallplate which covers the wallhead while its apex joins two boards which run between the southern gable-wall and the northern trimmer.



**132060**  
Lean-to Roof, Wallplate

Item	Cross-sectional Dimension	Assembly Marks	Tool Marks	Redundant Features	Fixings
Wall-plate (060)	45 x 125 mm	None	Machine-sawn (circular kerbs)	None	Nails



**Fig. 132-21**  
View from northeast showing wall-plate 060.

**132061**  
Lean-to Roof, Rafter 8

Item	Cross-sectional Dimension	Assembly Marks	Tool Marks	Redundant Features	Fixings
Rafter (061) <sup>262</sup>	75 x 125 mm	None	Machine-sawn (circular kerbs)	None	Nails



**Fig. 132-22**  
View from southeast showing rafter 061.

<sup>262</sup> The rafter joins at its apex with two boards which run between the southern gable-wall and the northern trimmer.

**132062**  
Lean-to Roof, Rafter 9

Item	Cross-sectional Dimension	Assembly Marks	Tool Marks	Redundant Features	Fixings
Rafter (062) <sup>263</sup>	50 x 158 mm	None	Machine-sawn (circular kerbs)	None	Nails



**Fig. 132-23**  
View from southeast showing rafter 062.

<sup>263</sup> The rafter joins at its apex with two boards which run between the southern gable-wall and the northern trimmer.

## 132063-066

### Lean-to Roof, Hip-Truss

Item	Cross-sectional Dimension	Assembly Marks	Tool Marks	Redundant Features	Fixings
Hip-Rafter (063)	75 x 125 mm	None	Machine-sawn (circular kerbs)	None	Nails
Rafter (064) <sup>264</sup>	75 x 125 mm	None	Machine-sawn (circular kerbs)	None	Nails
Rafter (065) <sup>265</sup>	55 x 85 mm	None	Machine-sawn (circular kerbs)	None	Nails
Rafter (066) <sup>266</sup>	50 x 80 mm	None	Machine-sawn (circular kerbs)	None	Nails



**Fig. 132-24**  
View from southeast showing hip-rafter (063) and rafter (065).

<sup>264</sup> The rafter joins at its apex with two boards which run between the southern gable-wall and the northern trimmer.

<sup>265</sup> The rafter joins at its apex with two boards which run between the southern gable-wall and the northern trimmer.

<sup>266</sup> The rafter joins at its apex with two boards which run between the southern gable-wall and the northern trimmer.

**132067-068**  
Lean-to Roof, Boards

Item	Cross-sectional Dimension	Assembly Marks	Tool Marks	Redundant Features	Fixings
Board (Top, 067)	35 x 180 mm	None	Machine-sawn (circular kerbs)	None	Nails
Board (Bottom, 068)	35 x 180 mm	None	Machine-sawn (circular kerbs)	None	Nails



**Fig. 132-25**  
View from northwest showing boards 068.



**132069**  
Wallplate

Item	Cross-sectional Dimension	Assembly Marks	Tool Marks	Redundant Features	Fixings
Wall-plate (East, 069)	See Fig. 132-26	None	Machine-sawn	None	Nails



**Fig. 132-26**  
View from west showing wall-plate 069.

**132070-074**  
Ceiling (ribs)

Item	Cross-sectional Dimension	Assembly Marks	Tool Marks	Redundant Features	Fixings
Rib (070)	Comparable to 071 (See Fig. 132-27)	None	Machine-sawn (circular kerbs)	None	Nails
Rib (071)	See Fig. 132-27	None	Machine-sawn (circular kerbs)	None	Nails
Rib (072)	See Fig. 132-27	None	Machine-sawn (circular kerbs)	None	Nails
Rib (073)	Comparable to 071 (See Fig. 132-27)	None	Machine-sawn (circular kerbs)	None	Nails
Rib (074)	Comparable to 071 (See Fig. 132-27)	None	Machine-sawn (circular kerbs)	None	Nails



**Fig. 132-27**  
View from east showing ceiling-ribs 071 and 072.

**132075-076**  
Ceiling (boards)

Item	Cross-sectional Dimension	Assembly Marks	Tool Marks	Redundant Features	Fixings
Board (East, 075)	See Fig. 132-28	None	Machine-sawn (circular kerbs)	None	Nails
Board (West, 076)	Comparable to 075 (See Fig. 132-28)	None	Machine-sawn (circular kerbs)	None	Nails



**Fig. 132-28**  
View from east showing ceiling-board 075.

**132077**  
Ceiling (strips)

Item	Cross-sectional Dimension	Assembly Marks	Tool Marks	Redundant Features	Fixings
Strip (077)	See Fig. 132-29	None	Machine-sawn (circular kerbs)	None	Nails



**Fig. 132-28**  
View from east showing ceiling-strip 077.

**132078-084**  
Ceiling (Southern Dormer )

Item	Cross-sectional Dimension	Assembly Marks	Tool Marks	Redundant Features	Fixings
Rib (East, 078)	See Fig. 132-30	None	Machine-sawn (circular kerbs)	None	Nails
Rib (Centre, 079)	See Fig. 132-30	None	Machine-sawn (circular kerbs)	None	Nails
Rib (West, 080)	See Fig. 132-30	None	Machine-sawn (circular kerbs)	None	Nails
Strip (North, 081)	See Fig. 132-30	None	Machine-sawn (circular kerbs)	None	Nails
Strip (North, 082)	See Fig. 132-30	None	Machine-sawn (circular kerbs)	None	Nails
Post (North, 083)	See Fig. 132-30	None	Machine-sawn (circular kerbs)	None	Nails
Post (South, 084)	Comparable to post 083 (See Fig. 132-30)	None	Machine-sawn (circular kerbs)	None	Nails



**Fig. 132-30**  
View from north showing ceiling-ribs (078, 079, 080), strips (081, 082) and post 083.



**132085-094**  
Ceiling (Northern Dormer )

Item	Cross-sectional Dimension	Assembly Marks	Tool Marks	Redundant Features	Fixings
Rib (East, 085)	See Figs 132-31 and -30	None	Machine-sawn (circular kerbs)	None	Nails
Rib (Centre, 086)	See Figs 132-31 and -30	None	Machine-sawn (circular kerbs)	None	Nails
Rib (West, 087)	See Figs 132-31 and -30	None	Machine-sawn (circular kerbs)	None	Nails
Strip (088)	See Figs 132-31 and -30	None	Machine-sawn (circular kerbs)	None	Nails
Strip (089)	See Figs 132-31 and -30	None	Machine-sawn (circular kerbs)	None	Nails
Strip (090)	See Figs 132-31 and -30	None	Machine-sawn (circular kerbs)	None	Nails
Strip (091)	See Figs 132-31 and -30	None	Machine-sawn (circular kerbs)	None	Nails
Strip (092)	See Figs 132-31 and -30	None	Machine-sawn (circular kerbs)	None	Nails
Strut (North, 093)	See Figs 132-31 and -30	None	Machine-sawn (circular kerbs)	None	Nails
Strut (South, 094)	See Figs 132-31 and -30	None	Machine-sawn (circular kerbs)	None	Nails



**Fig. 132-31**  
View from east showing ceiling-rib 085 and strips 088 and 092 of northern dormer.

# 136001-004

## Truss 1

Item	Cross-sectional Dimension	Assembly Marks	Tool Marks	Redundant Features	Fixings
Rafter (North, 001)	50 x 100 mm	None	Circular saw-kerbs	None	Modern Nails
Rafter (South, 002)	50 x 100 mm	None	Circular saw-kerbs	None	Modern Nails
Collar-beam (003)	50 x 100 mm	None	Circular saw-kerbs	None	Modern Nails
Post (004)	50 x 100 mm	None	Circular saw-kerbs	None	Modern Nails



**Fig. 136-1**  
View from north showing collar-beam and northern rafter of truss 1 (third rafter from right).

**136005**  
Rafter 2

Item	Cross-sectional Dimension	Assembly Marks	Tool Marks	Redundant Features	Fixings
Rafter (005)	50 x 100 mm	None	Circular saw-kerbs	None	Modern Nails



**Fig. 136-5**  
View from north showing rafter 2  
(second rafter from right).

**136006**  
Rafter 3

Item	Cross-sectional Dimension	Assembly Marks	Tool Marks	Redundant Features	Fixings
Rafter (006)	50 x 100 mm	None	Circular saw-kerbs	None	Modern Nails



**Fig. 136-6**  
View from north showing rafter 3  
(third rafter underneath right part of  
collar-beam).

**136007**  
Rafter 4

Item	Cross-sectional Dimension	Assembly Marks	Tool Marks	Redundant Features	Fixings
Rafter (007)	50 x 100 mm	None	Circular saw-kerbs	None	Modern Nails



**Fig. 136-7**  
View from north showing rafter 4 (fourth rafter underneath right part of collar-beam).



**136008**  
Rafter 5

Item	Cross-sectional Dimension	Assembly Marks	Tool Marks	Redundant Features	Fixings
Rafter (008)	50 x 100 mm	None	Circular saw-kerbs	None	Modern Nails



**Fig. 136-8**  
View from north showing rafter 5  
(fifth rafter underneath right part of  
collar-beam).

**136009**

Rafter 6

Item	Cross-sectional Dimension	Assembly Marks	Tool Marks	Redundant Features	Fixings
Rafter (009)	50 x 100 mm	None	Circular saw-kerbs	None	Modern Nails



**Fig. 136-9**  
View from north showing rafter 6  
(sixth rafter underneath right part of  
collar-beam).

**136010**  
Rafter 7

Item	Cross-sectional Dimension	Assembly Marks	Tool Marks	Redundant Features	Fixings
Rafter (010)	50 x 100 mm	None	Circular saw-kerbs	None	Modern Nails



**Fig. 136-10**  
View from north showing rafter 7  
(seventh rafter underneath right  
part of collar-beam).

**136011**  
Rafter 8

Item	Cross-sectional Dimension	Assembly Marks	Tool Marks	Redundant Features	Fixings
Rafter (011)	50 x 100 mm	None	Circular saw-kerbs	None	Modern Nails



**Fig. 136-11**  
View from north showing rafter 8  
(first rafter from left).

**136012**  
Rafter 10

Item	Cross-sectional Dimension	Assembly Marks	Tool Marks	Redundant Features	Fixings
Rafter (012)	50 x 100 mm	None	Circular saw-kerbs	None	Modern Nails



**Fig. 136-12**  
View from north showing rafter 10  
(third rafter from left).



**136013**  
Rafter 11

Item	Cross-sectional Dimension	Assembly Marks	Tool Marks	Redundant Features	Fixings
Rafter (013)	50 x 100 mm	None	Circular saw-kerbs	None	Modern Nails



**Fig. 136-13**  
View from north showing rafter 11  
(third rafter from left).

**136014**  
Rafter 12

Item	Cross-sectional Dimension	Assembly Marks	Tool Marks	Redundant Features	Fixings
Rafter (014)	50 x 100 mm	None	Circular saw-kerbs	None	Modern Nails



**Fig. 136-14**  
View from north showing rafter 12  
(fourth rafter from left).

**136015**  
Rafter 13

Item	Cross-sectional Dimension	Assembly Marks	Tool Marks	Redundant Features	Fixings
Rafter (015)	50 x 100 mm	None	Circular saw-kerbs	None	Modern Nails



**Fig. 136-15**  
View from north showing rafter 13  
(fifth rafter from left).

**136016**  
Rafter 14

Item	Cross-sectional Dimension	Assembly Marks	Tool Marks	Redundant Features	Fixings
Rafter (016)	50 x 100 mm	None	Circular saw-kerbs	None	Modern Nails



**Fig. 136-16**  
View from north showing rafter 14  
(first rafter from left).

**136017**  
Rafter 15

Item	Cross-sectional Dimension	Assembly Marks	Tool Marks	Redundant Features	Fixings
Rafter (017)	50 x 100 mm	None	Circular saw-kerbs	None	Modern Nails



**Fig. 136-17**  
View from north showing rafter 15  
(second rafter from left).



**136018**  
Rafter 16

Item	Cross-sectional Dimension	Assembly Marks	Tool Marks	Redundant Features	Fixings
Rafter (018)	50 x 100 mm	None	Circular saw-kerbs	None	Modern Nails



**Fig. 136-18**  
View from north showing rafter 16  
(third rafter from left).

## 136019-026

Wall-plates

Item	Cross-sectional Dimension	Assembly Marks	Tool Marks	Redundant Features	Fixings
Wallplate (019)	See Fig. 136-19	None	Circular saw-kerbs	None	Modern Nails
Wallplate (020)	See Fig. 136-19	None	Circular saw-kerbs	None	Modern Nails
Wallplate (021)	See Fig. 136-19	None	Circular saw-kerbs	None	Modern Nails
Wallplate (022)	See Fig. 136-19	None	Circular saw-kerbs	None	Modern Nails
Wallplate (023)	See Fig. 136-19	None	Circular saw-kerbs	None	Modern Nails
Wallplate (024)	See Fig. 136-19	None	Circular saw-kerbs	None	Modern Nails
Wallplate (025)	See Fig. 136-19	None	Circular saw-kerbs	None	Modern Nails
Wallplate (026)	See Fig. 136-19	None	Circular saw-kerbs	None	Modern Nails



**Fig. 136-19**  
View from north showing wall-plates 019-022.

**136027-034**  
Purlin (Bottom)

Item	Cross-sectional Dimension	Assembly Marks	Tool Marks	Redundant Features	Fixings
Purlin (Bottom 027)	See Fig. 136-27	None	Circular saw-kerbs	None	Modern Nails
Purlin (Bottom 028)	See Fig. 136-27	None	Circular saw-kerbs	None	Modern Nails
Purlin (Bottom 029)	See Fig. 136-27	None	Circular saw-kerbs	None	Modern Nails
Purlin (Bottom 030)	See Fig. 136-27	None	Circular saw-kerbs	None	Modern Nails
Purlin (Bottom 031)	See Fig. 136-27	None	Circular saw-kerbs	None	Modern Nails
Purlin (Bottom 032)	See Fig. 136-27	None	Circular saw-kerbs	None	Modern Nails
Purlin (Bottom 033)	See Fig. 136-27	None	Circular saw-kerbs	None	Modern Nails
Purlin (Bottom 034)	See Fig. 136-27	None	Circular saw-kerbs	None	Modern Nails



**Fig. 136-27**  
View from north showing bottom purlins 027-032.

## 136035-042

Item	Cross-sectional Dimension	Assembly Marks	Tool Marks	Redundant Features	Fixings
Purlin (Bottom 035)	See Fig. 136-35	None	Circular saw-kerbs	None	Modern Nails
Purlin (Bottom 036)	See Fig. 136-35	None	Circular saw-kerbs	None	Modern Nails
Purlin (Bottom 037)	See Fig. 136-35	None	Circular saw-kerbs	None	Modern Nails
Purlin (Bottom 038)	See Fig. 136-35	None	Circular saw-kerbs	None	Modern Nails
Purlin (Bottom 039)	See Fig. 136-35	None	Circular saw-kerbs	None	Modern Nails
Purlin (Bottom 049)	See Fig. 136-35	None	Circular saw-kerbs	None	Modern Nails
Purlin (Bottom 041)	See Fig. 136-35	None	Circular saw-kerbs	None	Modern Nails
Purlin (Bottom 042)	See Fig. 136-35	None	Circular saw-kerbs	None	Modern Nails



**Fig. 136-35**  
View from north showing bottom purlins 035-40.

# 136043-050

## Purlin (Top)

Item	Cross-sectional Dimension	Assembly Marks	Tool Marks	Redundant Features	Fixings
Purlin (Top 043)	See Fig. 136-43	None	Circular saw-kerbs	None	Modern Nails
Purlin (Top 044)	See Fig. 136-43	None	Circular saw-kerbs	None	Modern Nails
Purlin (Top 045)	See Fig. 136-43	None	Circular saw-kerbs	None	Modern Nails
Purlin (Top 046)	See Fig. 136-43	None	Circular saw-kerbs	None	Modern Nails
Purlin (Top 047)	See Fig. 136-43	None	Circular saw-kerbs	None	Modern Nails
Purlin (Top 048)	See Fig. 136-43	None	Circular saw-kerbs	None	Modern Nails
Purlin (Top 049)	See Fig. 136-43	None	Circular saw-kerbs	None	Modern Nails
Purlin (Top 050)	See Fig. 136-43	None	Circular saw-kerbs	None	Modern Nails



**Fig. 136-43**  
View from north showing top purlins 043-058.



**136051-058**  
Purlin (Top)

Item	Cross-sectional Dimension	Assembly Marks	Tool Marks	Redundant Features	Fixings
Purlin (Top 051)	See Fig. 136-51	None	Circular saw-kerbs	None	Modern Nails
Purlin (Top 052)	See Fig. 136-51	None	Circular saw-kerbs	None	Modern Nails
Purlin (Top 053)	See Fig. 136-51	None	Circular saw-kerbs	None	Modern Nails
Purlin (Top 054)	See Fig. 136-51	None	Circular saw-kerbs	None	Modern Nails
Purlin (Top 055)	See Fig. 136-51	None	Circular saw-kerbs	None	Modern Nails
Purlin (Top 056)	See Fig. 136-51	None	Circular saw-kerbs	None	Modern Nails
Purlin (Top 057)	See Fig. 136-51	None	Circular saw-kerbs	None	Modern Nails
Purlin (Top 058)	See Fig. 136-51	None	Circular saw-kerbs	None	Modern Nails

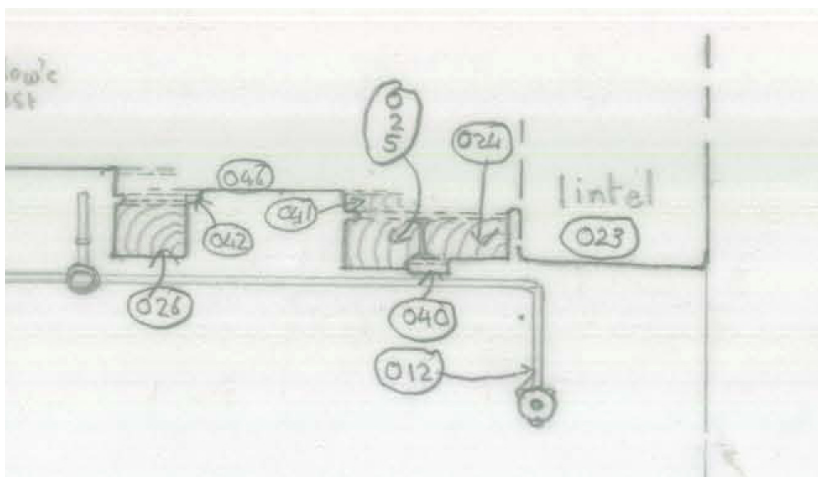


**Fig. 136-51**  
View from north showing top purlins 043-058

**019024**

Joist 1

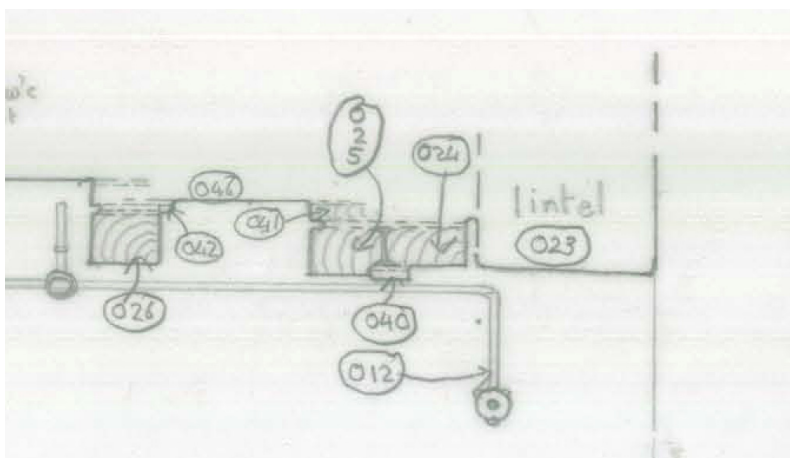
Item	Cross-sectional Dimension	Assembly Marks	Tool Marks	Redundant Features	Fixings
Joist (024)	165 x ca. 10 mm	None	Adzed	None	None



**Fig. 019-1**  
View from east showing  
joist 024 (first joist from right).

**019025**  
Joist 2

Item	Cross-sectional Dimension	Assembly Marks	Tool Marks	Redundant Features	Fixings
Joist (025) <sup>267</sup>	160 x 100 mm	None	Adzed	None	Handmade iron spike <sup>268</sup>



**Fig. 019-2**  
View from east showing joist 025 (second joist from right).

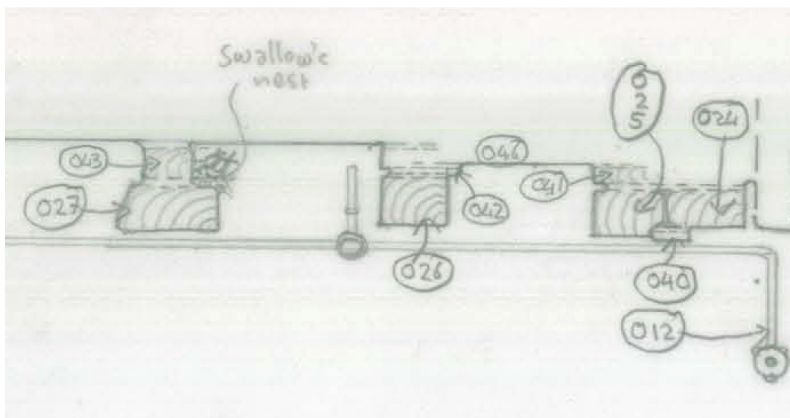
<sup>267</sup> A strip (18 x 28 mm, length: 290 mm), intended as substructure to ceiling-boards, is nailed to the underside of the joist at its southern side.

<sup>268</sup> Only at eastern side of pend immediately underneath joist.

**019026**

Joist 3

Item	Cross-sectional Dimension	Assembly Marks	Tool Marks	Redundant Features	Fixings
Joist (026) <sup>269</sup>	140 x 110 mm	None	Adzed	Two handmade iron nails <sup>270</sup>	Handmade iron spike <sup>271</sup>



**Fig. 019-3**  
View from east showing joist 026 (second joist from left).

<sup>269</sup> A strip (28 x 55 mm, length: 340 mm) is nailed to the underside of the joist at the western side of the pend. Attached to this strip is a second strip (18 x 28 mm, length: 220 mm), which carries modern ceiling-boards (cross-sectional dimension: 12 x 22 mm).

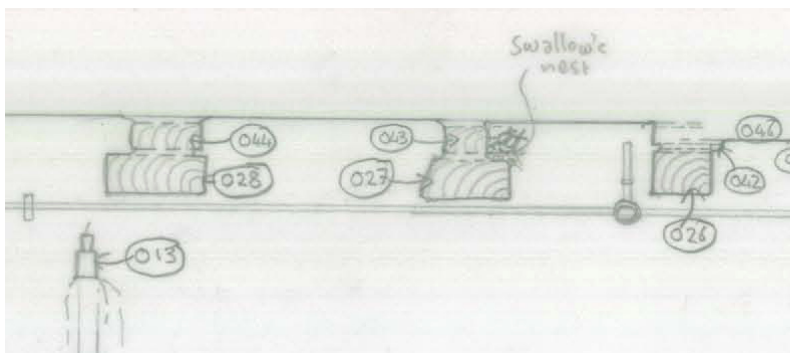
<sup>270</sup> Diameter of shaft: 5 mm, length: 30 mm.

<sup>271</sup> Only at eastern side of pend immediately underneath joist.

**019027**

Joist 4

Item	Cross-sectional Dimension	Assembly Marks	Tool Marks	Redundant Features	Fixings
Joist (027) <sup>272</sup>	235 x 110 mm	None	Adzed	None	Handmade iron spike <sup>273</sup>



**Fig. 019-4**  
View from east showing joist 027 (second joist from left).

<sup>272</sup> The upper side of joist is not at the same level as the underside of the ceiling, suggesting that the extant floor was raised.

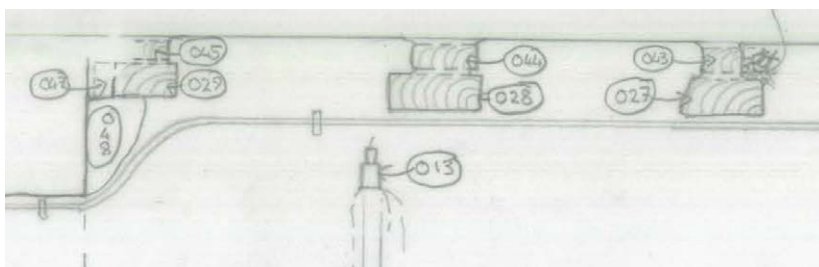
<sup>273</sup> Only at eastern side of pend immediately underneath joist.



**019028**

Joist 5

Item	Cross-sectional Dimension	Assembly Marks	Tool Marks	Redundant Features	Fixings
Joist (028) <sup>274</sup>	230 x 110 mm	None	Adzed	None	Handmade iron spike <sup>275</sup>



**Fig. 019-5**  
View from east showing joist 028 (second joist from right).

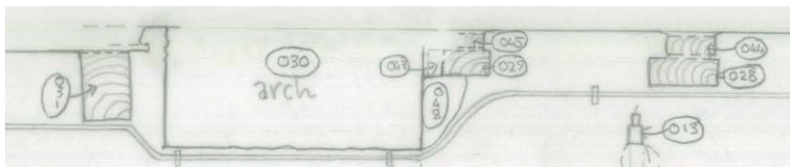
<sup>274</sup> The upper side of joist is not at the same level as the underside of the ceiling, suggesting that the extant floor was raised.

<sup>275</sup> Only at eastern side of pend immediately underneath joist.

**019029**

Joist 6

Item	Cross-sectional Dimension	Assembly Marks	Tool Marks	Redundant Features	Fixings
Joist (029) <sup>276</sup>	250 x 95-130 mm	None	Adzed	None	Handmade iron spike <sup>277</sup>



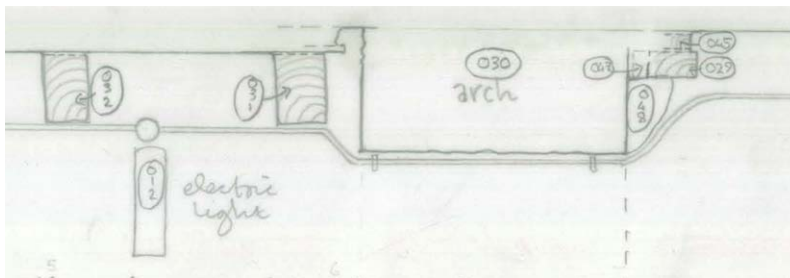
**Fig. 019-6**  
View from east showing joist 029 (second joist from right).

<sup>276</sup> The upper side of joist is not at the same level as the underside of the ceiling, suggesting that the extant floor was raised.

<sup>277</sup> Only at eastern side of pend immediately underneath joist.

**019031**  
Joist 7

Item	Cross-sectional Dimension	Assembly Marks	Tool Marks	Redundant Features	Fixings
Joist (031)	165 x 245 mm	None	Adzed	Iron Nail <sup>278</sup>	Handmade iron spike <sup>279</sup>



**Fig. 019-7**  
View from east showing joist 031  
(second joist in front of west-wall).

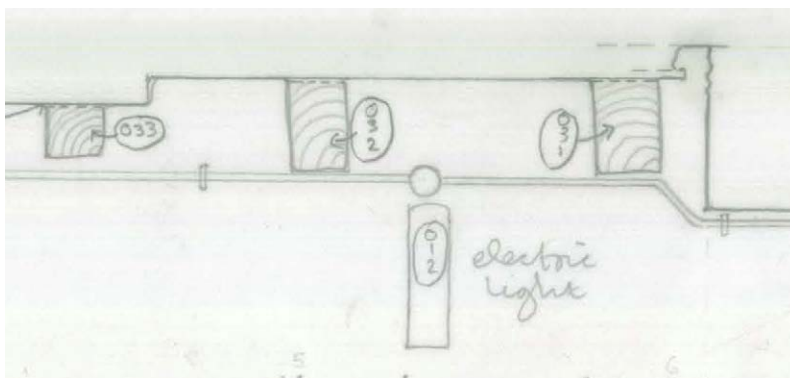
<sup>278</sup> Diameter of head: 8 mm.

<sup>279</sup> Only at eastern side of pend immediately underneath joist.

**019032**

Joist 8

Item	Cross-sectional Dimension	Assembly Marks	Tool Marks	Redundant Features	Fixings
Joist (032) <sup>280</sup>	95 x 225 mm	None	Adzed	None	Handmade iron spike <sup>281</sup>



**Fig. 019-8**  
View from east showing joist 032  
(second joist in front of west-wall).

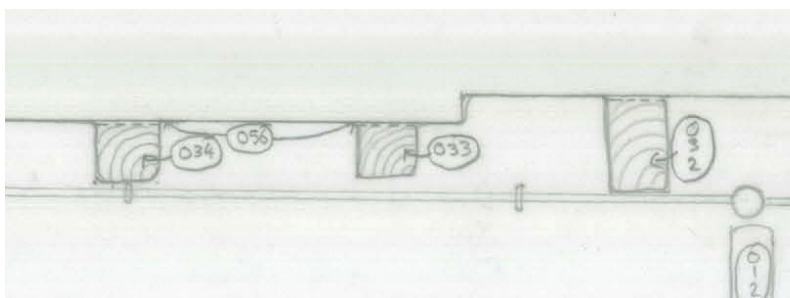
<sup>280</sup> Joist 069 comprises two individual beams (45 x 140 mm) that are screwed together. Both items create the landing for the circular stair leading from the entrance lobby to the first floor.

<sup>281</sup> Only at eastern side of pend immediately underneath joist.

**019033**

Joist 9

Item	Cross-sectional Dimension	Assembly Marks	Tool Marks	Redundant Features	Fixings
Joist (033)	180 x 200 mm	None	Adzed	None	None



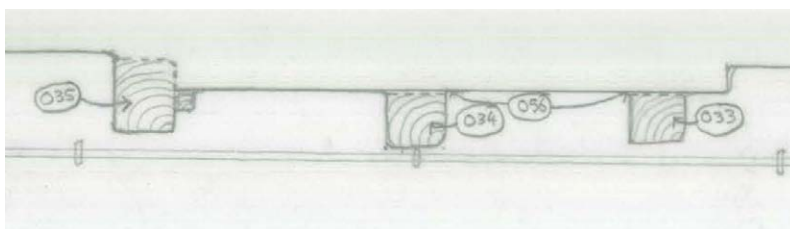
**Fig. 019-9**  
View from east showing joist 033  
(second joist from right).



**019034**

Joist 10

Item	Cross-sectional Dimension	Assembly Marks	Tool Marks	Redundant Features	Fixings
Joist (034)	105 x 200 mm	None	Adzed	None	Handmade iron spike <sup>282</sup>

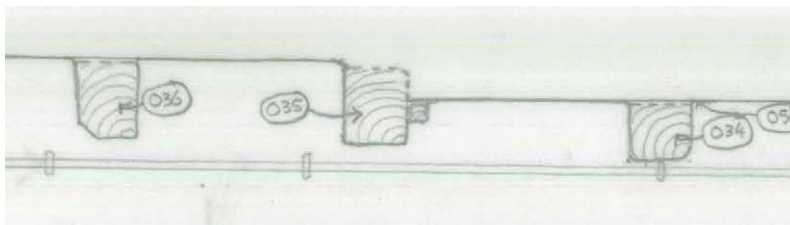


**Fig. 019-10**  
View from east showing joist 034  
(second joist from right).

<sup>282</sup> Only at eastern side of pend immediately underneath joist.

**019035**  
Joist 11

Item	Cross-sectional Dimension	Assembly Marks	Tool Marks	Redundant Features	Fixings
Joist (035) <sup>283</sup>	185 x 200 mm	None	Adzed	None	Handmade iron spikes <sup>284</sup>



**Fig. 019-11**  
View from east showing joist 035 (second joist from right).

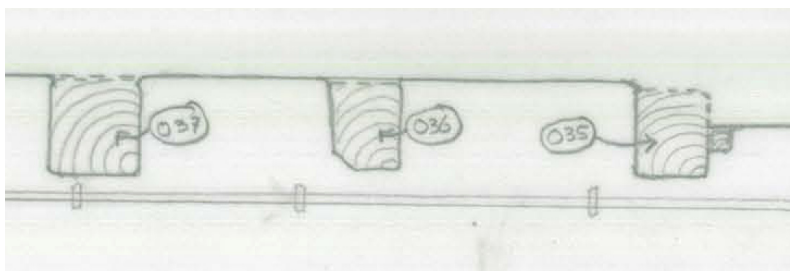
<sup>283</sup> A wooden strip (dimensions: 40 x 60 mm, length: 630 mm) is nailed with two handmade nails (diameter of head: 15 mm) to the northern side of joist 039. The strip serves as substructure for three solid boards (thickness: ca. 40 mm) which stretch between joists 038 and 032.

<sup>284</sup> One of these spikes appears at the eastern side of the pend immediately underneath the joist. Another one (diameter of nail shaft ca. 15 mm) punctures the lateral face of 035 at the western side, while a second spike (diameter of nail shaft: 10 mm, length of visible item: 110 mm) appears 45 mm above spike 2.

**019036**

Joist 12

Item	Cross-sectional Dimension	Assembly Marks	Tool Marks	Redundant Features	Fixings
Joist (036)	130 x 200 mm	None	Adzed	None	Handmade iron spike <sup>285</sup>



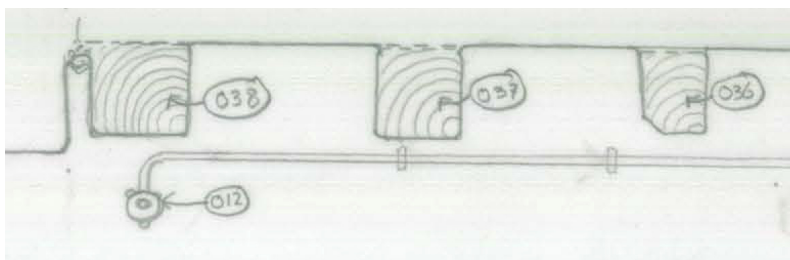
**Fig. 019-12**  
View from east showing joist 036 (second joist from right).

<sup>285</sup> Only at eastern side of pend immediately underneath joist.

**019037**

Joist 13

Item	Cross-sectional Dimension	Assembly Marks	Tool Marks	Redundant Features	Fixings
Joist (037)	205 x 205 mm	None	Adzed	None	Handmade iron spike <sup>286</sup>



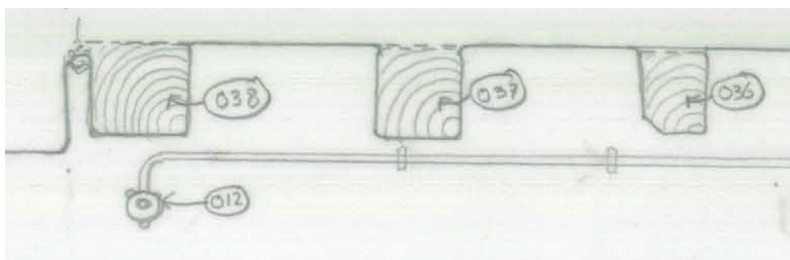
**Fig. 019-13**  
View from east showing  
joist 037 (second joist from right).

<sup>286</sup> Only at eastern side of pend immediately underneath joist.

**019038**

Joist 14

Item	Cross-sectional Dimension	Assembly Marks	Tool Marks	Redundant Features	Fixings
Joist (038)	235 x 205 mm	None	Adzed	None	Handmade iron spike <sup>287</sup>



**Fig. 019-14**  
View from east showing joist 038 (first joist from left).

<sup>287</sup> Only at eastern side of pend immediately underneath joist.

**028003**

Joist 1

Item	Cross-sectional Dimension	Assembly Marks	Tool Marks	Redundant Features	Fixings
Joist (003)	90 x 130 mm	None	Adzed	None	None



**Fig. 028-1**  
View from south showing  
joist 003 (joist above doors).



**028063**

Joist 2

Item	Cross-sectional Dimension	Assembly Marks	Tool Marks	Redundant Features	Fixings
Joist (063)	120 x 170 mm	None	Adzed	Regular pattern of nails holes at underside	None



**Fig. 028-2**  
View from northwest showing joist 063 (first joist from left).

**028064**

Joist 3

Item	Cross-sectional Dimension	Assembly Marks	Tool Marks	Redundant Features	Fixings
Joist (064)	150 x 180 mm	None	Adzed	Regular pattern of nails holes at underside	None



**Fig. 028-3**  
View from northwest showing joist 064 (second joist from left).

**028065**

Joist 4

Item	Cross-sectional Dimension	Assembly Marks	Tool Marks	Redundant Features	Fixings
Joist (065)	140 x 150 mm	None	Adzed	Regular pattern of nails holes at underside	None



**Fig. 028-4**  
View from northwest showing joist 065 (second joist from left).

**028066**

Joist 5

Item	Cross-sectional Dimension	Assembly Marks	Tool Marks	Redundant Features	Fixings
Joist (066)	105 x 150 mm	None	Adzed	Regular pattern of nails holes at underside	None



**Fig. 028-5**  
View from southeast showing joist 066 (second joist from right).

**028067**

Joist 6

Item	Cross-sectional Dimension	Assembly Marks	Tool Marks	Redundant Features	Fixings
Joist (067)	135 x 160 mm	None	Adzed	Regular pattern of nails holes at underside	None



**Fig. 028-6**  
View from southeast showing joist 067 (third joist from right).

**028068**

Joist 7

Item	Cross-sectional Dimension	Assembly Marks	Tool Marks	Redundant Features	Fixings
Joist (068)	100 x 150 mm	None	Adzed	Regular pattern of nails holes at underside	None



**Fig. 028-7**  
View from east showing joist 068  
(fourth joist in front of west-wall).



**028069**

Joist 8

Item	Cross-sectional Dimension	Assembly Marks	Tool Marks	Redundant Features	Fixings
Joist (069) <sup>288</sup>	2 x 45 x 140 mm	None	Machine-sawn (circular kerbs)	None	Modern Screws



**Fig. 028-8**  
View from east showing joist 069  
(third joist in front of west-wall).

<sup>288</sup> Joist 069 consists of two machine-cut individual beams (45 x 140 mm) that are screwed together. Both items create the landing for the circular stair leading from the entrance lobby to the first floor.

**028070**

Joist 9

Item	Cross-sectional Dimension	Assembly Marks	Tool Marks	Redundant Features	Fixings
Joist (070)	130 x 150 mm	None	Adzed	Regular pattern of nails holes at underside	None



**Fig. 028-9**  
View from east showing joist 070  
(second joist in front of west-wall).

**028071**  
Joist 10

Item	Cross-sectional Dimension	Assembly Marks	Tool Marks	Redundant Features	Fixings
Joist (071) <sup>289</sup>	90 x 130 mm	None	Adzed	Regular pattern of nails holes at underside	None



**Fig. 028-10**  
View from east showing joist 071  
(first joist in front of west-wall).

<sup>289</sup> The tooling of joist 071 differs from that ascertainable of all other joists. While it is adzed, the tooling is less distinctive and it seems as if the joist is not contemporary with the majority of joists in 028.

**028072**  
Joist 11

Item	Cross-sectional Dimension	Assembly Marks	Tool Marks	Redundant Features	Fixings
Joist (072) <sup>290</sup>	2 x 45 x 140 mm	None	Adzed	None	None



**Fig. 028-11**  
View from east showing  
joist 072 (first joist from right).

<sup>290</sup> Joist 072 consists of two machine-cut individual beams (45 x 140 mm) that are screwed together. Both items frame the landing for the circular stair leading from the entrance lobby to the first floor.

**028073**  
Joist 12

Item	Cross-sectional Dimension	Assembly Marks	Tool Marks	Redundant Features	Fixings
Joist (072) <sup>291</sup>	2 x 45 x 140 mm	None	Adzed	None	None



**Fig. 028-12**  
View from northeast showing joist 073 (joist above doors).

<sup>291</sup> Joist 073 consists of two machine-cut individual beams (45 x 140 mm) that are screwed together. Both items frame the landing for the circular stair leading from the entrance lobby to the first floor.