

## *Discovery and Excavation in Scotland*

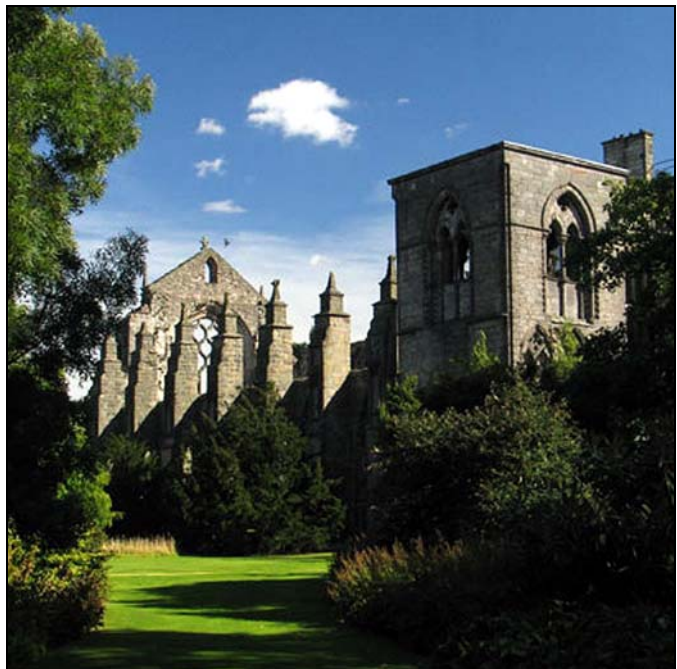
Updated on 15/06/2007

<b>LOCAL AUTHORITY:</b>	Edinburgh, City Of
<b>PROJECT TITLE/SITE NAME:</b>	Palace of Holyroodhouse (Gardens)
<b>PROJECT CODE:</b>	HSCO-90131-2009-01
<b>PARISH:</b>	Edinburgh, City Of
<b>NAME OF CONTRIBUTOR:</b>	Alan Radley
<b>NAME OF ORGANISATION:</b>	Kirkdale Archaeology
<b>TYPE(S) OF PROJECT:</b>	Watching Brief
<b>NMRS NO(S):</b>	NT27SE 35.00; NT27SE 197
<b>SITE/MONUMENT TYPE(S):</b>	Palace; Park
<b>SIGNIFICANT FINDS:</b>	None
<b>NGR (2 letters, 8 or 10 figures)</b>	Centred c NT 268 739
<b>START DATE (this season)</b>	19 February 2009
<b>END DATE (this season)</b>	19 February 2009
<b>PREVIOUS WORK (incl. DES ref.)</b>	
<b>MAIN (NARRATIVE) DESCRIPTION:</b> (May include information from other fields)	<i>Six small holes were excavated for tree planting in the gardens of the Palace of Holyroodhouse. There were no finds or features of great archaeological significance, although in three trenches there were traces of structural remains in the form of mortar and stone.</i>
<b>PROPOSED FUTURE WORK:</b>	
<b>CAPTION(S) FOR ILLUSTRS:</b>	
<b>SPONSOR OR FUNDING BODY:</b>	Historic Scotland
<b>ADDRESS OF MAIN CONTRIBUTOR:</b>	4, Western Terrace, Edinburgh, EH12 5QF
<b>EMAIL ADDRESS:</b>	g_ewart@hotmail.com
<b>ARCHIVE LOCATION (intended/deposited)</b>	Archive to be deposited in NMRS

**Historic Scotland  
Properties in Care  
Minor Archaeological Works 2008-9**

**Palace of Holyroodhouse (Gardens):  
Archaeological monitoring  
of tree planting,  
February 2009**

**HS PIC Index number: 90131  
Project code: HSCO-90131-2009-01**



**March 2009  
Kirkdale Archaeology**

<b><u>Site</u></b>	Palace of Holyroodhouse (Gardens)
<b><u>N.G.R</u></b>	NT 269 738
<b><u>Project Description</u></b>	Archaeological monitoring
<b><u>Project code</u></b>	HSCO-90131-2009-01

### **Contents**

1.0 Introduction	1
2.0 Description	1
3.0 Interpretation	3
A1.0 Appendix 1 : List of contexts	4
A2.0 Appendix 2 : List of drawings	4
A3.0 Appendix 3 : List of photographs	4

## **SUMMARY**

*February 2009 – Six small holes were excavated for tree planting in the gardens of the Palace of Holyroodhouse. There were no finds or features of great archaeological significance, although in three trenches there were traces of structural remains in the form of mortar and stone.*

### **1.0 INTRODUCTION**

Under the terms of its call-off contract with Historic Scotland, Kirkdale Archaeology was asked to undertake archaeological monitoring during the excavation of six trenches required for tree planting.

Trenches 1 and 2 were located to the S of the Palace's SW tower in a line of trees extending S from the path around the Palace, with Trench 1 c 5.00m S of the path and Trench 2 2.50 m further S and 3.50 m W of Trench 1.

Trenches 3, 4, 5 and 6 were located to the E and SE of the Palace in the area immediately W of the ha-ha. Trench 3 was within the NE rockery and Trenches 4& 5 in the SE rockery. Trenches 3 and 5 were c 1.50 m and 1.00 m W of the rockery's E edge respectively (in the upper level of the rockery), while Trench 4 was 1.00m E of the W edge of the rockery in the lower level. Trench 6 was toward the SE corner of the gardens c 14.0 m NE of the well and c 33.0 m SE of a large Elm tree.

### **2.0 DESCRIPTION**

#### **2.1 Trench 1**

This trench was roughly oval and measured up to 900 mm E-W, 600 mm N-S and 500 mm deep. The excavation was to allow the planting of a Birch (*Betula Pendula*) tree.

The soil removed, **101**, was fairly loose and heavily-rooted mid-dark brown silty loam with a few small stones. **101** measured 500 mm in thickness and sealed **102**, a mix of angular pieces of sandstone and light brown mortar. **102** was only glimpsed at the limit of excavation.

## 2.2 Trench 2

Roughly circular in shape, Trench 2 measured 800 mm in diameter and 550 mm deep. A Birch (*Betula Pendula*) was to be planted here.

Fairly loose and heavily-rooted mid-dark brown silty loam with occasional small stones, **201**, was the only deposit removed. At the base of the E 200 mm of the trench there was a N-S line of mortar and stone, **202**, which was seen to a maximum depth of 60 mm but continued below the unexcavated level. It looked like there was more mortar than stone in **202** but there was little investigation of this feature.

## 2.3 Trench 3

Trench 3 measured 650 mm N-S, 600 mm E-W and 500 mm deep. The excavation was to allow the planting of a Cherry (*Prunus Sargentii*).

The upper deposit, **301**, was loose mid-dark brown clayey loam and it measured 120 mm in depth. **301** sealed **302**, a deposit of fairly compact mid brown clay loam with one or two stone grits and charcoal flecks. **302** was excavated to a depth of 380 mm but not bottomed.

## 2.4 Trench 4

Trench 4 was to allow the planting of a Pear (*Pyrus Chanticleer*); it measured 700 mm N-S, 600 mm wide and 550 mm deep.

A 120 mm thick deposit, **401**, of loose mid-dark brown clay loam, was the upper deposit. **401** sealed **402**, a 300 mm thick fairly compact deposit of mid brown clay loam with one or two stone grits and charcoal flecks. In the bottom 80 mm of the trench there was a deposit of compact green/grey clay, **404**.

## 2.5 Trench 5

The trench measured 700 mm N-S, 700 mm wide and 600 mm deep. A Cherry (*Prunus Sargentii*) was to be planted here.

The upper deposit of loose mid-dark brown clay loam, **501**, measured 130 mm in depth. Under **501**, **502** comprised fairly compact mid brown clay loam with occasional stone grits and charcoal flecks. Sealed by **502** and filling the bottom 200 mm of the trench, **503** comprised light-mid grey sandy clay with occasional small

stones and mortar flecks.

## 2.6 Trench 6

Trench 6 measured 1.50 m N-S, 800 mm E-W and up to 500 mm deep - in the S 900 mm only the upper 150 mm (**601**) was removed. The excavation here was for an Oak, (*Quercus Palustris*).

The turf and mid-dark brown slightly silty loam topsoil, **601**, measured 150 mm in depth and was removed from the whole area. The S part of the trench was heavily rooted and abandoned at this depth. Below **601** in the N part of the trench there was a 300 mm thick deposit, **602**, of mid-dark brown clayey loam with one or two small stones and some roots. **602** sealed **603**, a flat surface of hard packed, small stones, 15 mm diameter on average. **603** was uncovered but not excavated in the N part of the trench where the NE corner of it had been disturbed by a large tree root.

## 3.0 INTERPRETATION AND OBSERVATIONS

The more interesting features at Trenches 1 and 2 were left unexcavated. It is noted that archaeological remnants were encountered *c* 500 mm below the current ground surface; any plans for future groundworks in this area should expect to encounter features at this depth. This does not rule out the possibility of shallower remains appearing elsewhere in this planting bed. There was little found in Trenches 3, 4 and 5 and the likelihood seems that the landscaping in this area has rendered it archaeologically sterile, although future trenches may reveal more about the earlier gardens and the ha-ha. The surface seen in Trench 6, **603**, was 450 mm below the current ground level and any future excavation in this area might help with the interpretation of this feature.

**A1.0****APPENDIX 1: LIST OF CONTEXTS**

#	Description
101	Mid-dark brown silty loam.
102	Angular pieces of sandstone and light brown mortar, unexcavated in the base of the trench.
201	Mid-dark brown silty loam.
202	N-S line of light brown mortar and stone, unexcavated in the base of the trench.
301	Mid-dark brown clayey loam. Topsoil.
302	Mid brown clay loam, under 301.
401	Topsoil, mid-dark brown clayey loam.
402	Mid brown clay loam, under 401.
403	Red brown slightly silty clay and stones, under 402.
404	Compact green grey clay, probably subsoil.
501	Topsoil, mid-dark brown clayey loam.
502	Mid brown clay loam, under 501.
503	Light-mid grey sandy clay with occasional small stones, under 501.
601	Turf and mid-dark brown slightly silty loam.
602	Mid-dark brown clayey loam, under 601.
603	Surface of hard packed gravel formed with small, 15mm diameter, rounded stones.

**A2.0****APPENDIX 2: LIST OF DRAWINGS**

No	Tr.	Type	Scale	Description	Date
1	1+2	Plan	1:100	Location of trenches 1 and 2.	19/02/09
2	2	Plan	1:20	Trench 2 post excavation.	19/02/09
3	3	Plan	1:20	Trench post excavation.	19/02/09
4	3	Elevation	1:20	S. Elevation	19/02/09
5	4	Plan	1:20	Trench post excavation.	19/02/09
6	4	Elevation	1:20	E. Elevation	19/02/09
7	5	Plan	1:20	Trench post excavation.	19/02/09
8	5	Elevation	1:20	E. Elevation	19/02/09
9	6	Plan	1:20	Trench post excavation.	19/02/09
10	6	Elevation	1:20	W. Elevation	19/02/09
11	6	Plan	1:200	Trench location.	19/02/09

## A3.0

## APPENDIX 3: LIST OF PHOTOGRAPHS

#	Tr.	Description	From	Date
1	1	Trench post excavation.	E	19/02/09
2	1	Detail of 102.	E	19/02/09
3	2	Trench post excavation.	W	19/02/09
4	2	Detail of 202.	W	19/02/09
5	3	Trench post excavation.	S	19/02/09
6	3	North elevation.	S	19/02/09
7	4	East elevation.	W	19/02/09
8	4	East elevation.	W	19/02/09
9	5	East elevation.	W	19/02/09
10	5	East elevation.	W	19/02/09
11	6	Surface 603 in the base of the trench.	S	19/02/09
12	6	Detail of surface 603.	S	19/02/09



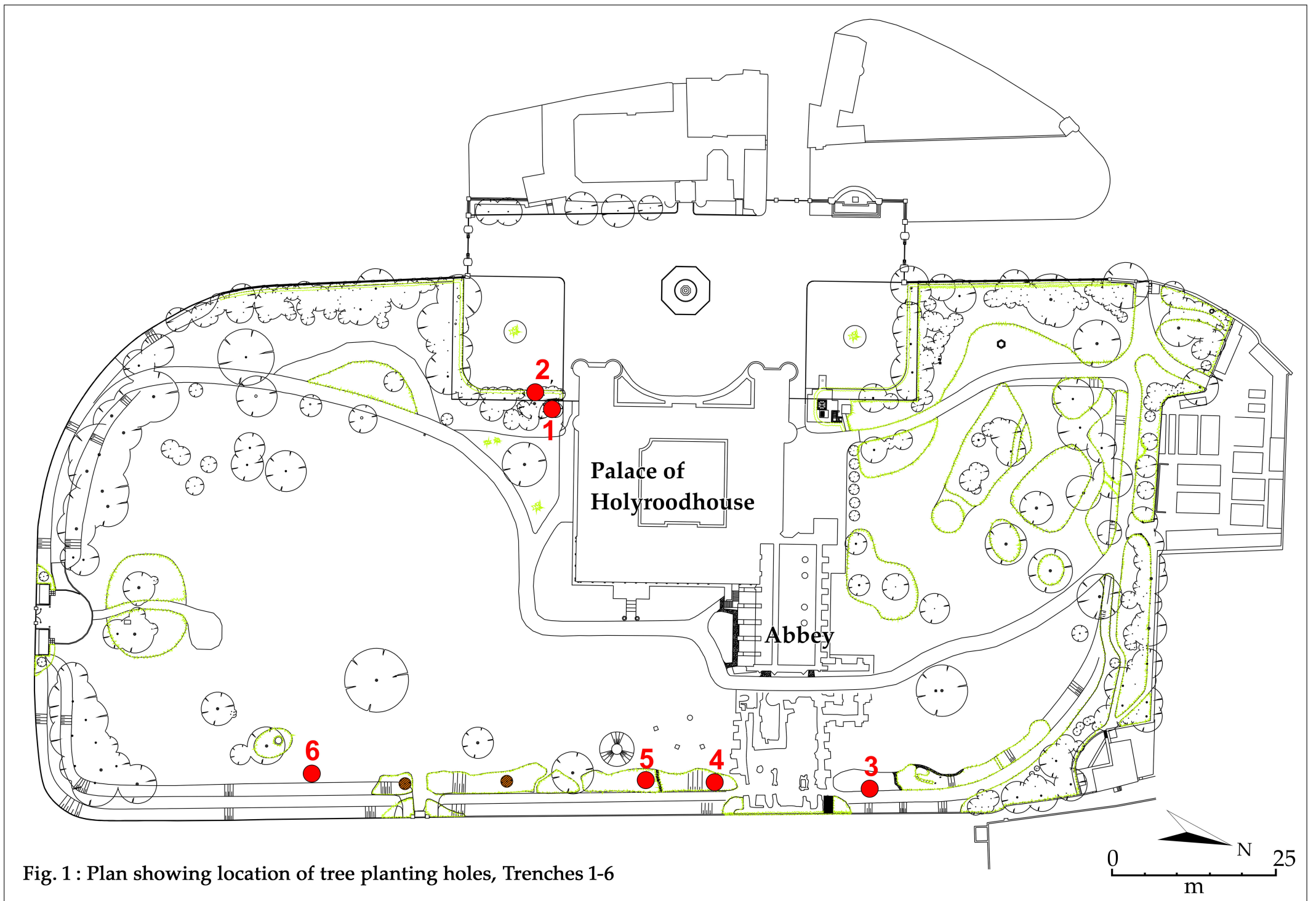


Fig. 1 : Plan showing location of tree planting holes, Trenches 1-6