

Discovery and Excavation in Scotland

Updated on 15/06/2007

LOCAL AUTHORITY:	Edinburgh, City Of
PROJECT TITLE/SITE NAME:	Palace of Holyroodhouse
PROJECT CODE:	HSCO-90132-2009-01
PARISH:	Edinburgh, City Of
NAME OF CONTRIBUTOR:	David Murray, Alan Radley
NAME OF ORGANISATION:	Kirkdale Archaeology
TYPE(S) OF PROJECT:	Archaeological Recording
NMRS NO(S):	NT27SE 35.00
SITE/MONUMENT TYPE(S):	Palace
SIGNIFICANT FINDS:	None
NGR (2 letters, 8 or 10 figures)	NT 2693 7390
START DATE (this season)	16 October 2009
END DATE (this season)	19 October 2009
PREVIOUS WORK (incl. DES ref.)	
MAIN (NARRATIVE) DESCRIPTION: (May include information from other fields)	<p>During the repair of windows on the south face of Palace of Holyroodhouse a recording exercise was undertaken on the easternmost two windows on the first and second floors. It was found that the widows were constructed with the appearance of sash windows but did not have the necessary fittings to work as such. Behind the widows was masonry blocking thought to have been in situ when these windows were first installed.</p> <p>Inscriptions seen on the blocking and window panes consist mostly of signed names, many dated 1867.</p> <p>Glass from previous repairs was cleared out from between the window frames and the blocking at the first floor level, but there were no inscriptions visible on the fragments. It was noted here that the windows were made with thinner glass while the sherds found included both this and thicker window glass. It was thought the thinner glass replaced the earlier window glass.</p>
PROPOSED FUTURE WORK:	
CAPTION(S) FOR ILLUSTRS:	
SPONSOR OR FUNDING BODY:	Historic Scotland
ADDRESS OF MAIN CONTRIBUTOR:	4 Western Terrace, Edinburgh EH12 5QF
EMAIL ADDRESS:	g_ewart@hotmail.com
ARCHIVE LOCATION (intended/deposited)	Archive to be deposited in NMRS

Historic Scotland
Properties in Care
Minor Archaeological Works 2009

Palace of Holyroodhouse: Archaeological recording, October 2009

HS PIC Index number: 90132
Project code: HSCO-90132-2009-01



26 March 2010
Kirkdale Archaeology

<u>Site</u>	Palace of Holyroodhouse
<u>N.G.R</u>	NT 2693 7390
<u>Project Description</u>	Archaeological recording
<u>Project code</u>	HSCO-90132-2009-01

Contents

Summary	1
1.0 Introduction	1
2.0 Description	1
3.0 Interpretation and observations	4
A1.0 Appendix 1: Context register	10
A2.0 Appendix 2: Photographic register	11

SUMMARY: October 2009 – During the repair of windows on the south face of Palace of Holyroodhouse a recording exercise was undertaken on the easternmost two windows on the first and second floors. It was found that the windows were constructed with the appearance of sash windows but did not have the necessary fittings to work as such. Behind the windows was masonry blocking thought to have been in situ when these windows were first installed.

Inscriptions seen on the blocking and window panes consist mostly of signed names, many dated 1867.

Glass from previous repairs was cleared out from between the window frames and the blocking at the first floor level, but there were no inscriptions visible on the fragments. It was noted here that the windows were made with thinner glass while the sherds found included both this and thicker window glass. It was thought the thinner glass replaced the earlier window glass.

1.0 INTRODUCTION

Under the terms of its PIC call-off contract Kirkdale Archaeology was asked by Historic Scotland to examine and record inscriptions found on the frames and glass during a course of maintenance and repairs to the windows at the E end of the S facing external elevation of the Palace of Holyroodhouse, and to remove and inspect the glass sherds that had been left between the window frames and the blocking behind them. It was anticipated that some of the windows would need replacing.

The work was undertaken on 16 and 19 October 2010.

2.0 DESCRIPTION

2.1 Overview

The windows examined were the easternmost two on the first and second floors of the S face of the Palace. The first floor windows are numbered 1 (W) and 2 (E) and those on the second floor are 3 (W) and 4 (E).

These four windows are two part sash frames with nine panes (three rows of three)

1	6	11
2	7	12
3	8	13
4	9	14
5	10	15

in the upper case and six in the lower case (two rows of three). For reference, the panes are numbered 1-15 from top to bottom and W-E as shown.

The inside of the window is blocked off with what is seen from the outside as a black screen. Although described as a sash window constructions there are no signs of a rope, weight and pulley system, so it seems likely that the blocking behind these windows was constructed when the sash windows were put in along the whole S façade.

2.2 Window 1

The glass has been removed from panes 11 and 14 and there is blocking directly behind the frame.

During the cleaning out of the loose glass from behind this window it was noted that there was a lot of thin sherds of picture glass and notably none of the thicker glass seen inside window 2. There was a large quantity of glass removed from inside this frame but all of the sherds were unmarked.

There is writing on the E edge of the frame of one of the removed panes, on the W edge of the whole frame and on the blocking.

There was a wage account made out to A (apparently Alan) Ferguson, £26.94 a week's wages dated 3 April 1974. (Alan, the current gardener at the Palace, remembers him - apparently, he "used to go round with a wee barrow".)

On the E side of frame 14, 101 is copper script written with a pencil and runs

vertically from top to bottom, it reads "William Thompson la[...] this pane 15th August 1867".

On the base of the E side of frame 15, **102** was clearly legible - "RA 1974", and had been written in pencil.

At the base of the W side of frame 15, **103** is pencil writing, running from top to bottom, transcribed as "..... Thompson late of".

104, "... Thompson Glasgow August 15th 1867" and "J Graham glazier to [...] Board [...] 1867" are scratched into the paint on the outer face of the blocking behind pane 11. There were further scratched inscriptions, **105**, below **104** but these were not legible.

2.3 Window 2

The loose glass was collected from the ledge at the joint of the two parts of the window and also the one at the base of it. It was noted that there were fragments of at least two panes, one thin picture glass and the other thicker window glass (measuring c 1 mm and 2.5 mm in thickness respectively). The debris was inside the central part and W side of window, only one or two sherds to the E. The thicker pieces of glass were all on the lower ledge.

On the frame below pane 2 **201**, "Robert Wilson May 13th 1884", has been scratched into the wood.

On the E edge of the frame, roughly halfway up pane 12, **202** "J Watson Glazier June 1900" is written in pencil.

2.4 Window 3

Panes 8 and 11 are broken and 2 and 5 are cracked and will presumably be replaced.

On the top of the E corner of pane 15, **301** was the names J Douglas 1913; James Hogg 1913; D Ogilvie 1913; H Haswell 1913 - these are in a column and are listed from top to bottom - scratched onto the glass.

Behind pane 1, on the inside of the frame close to the top, **302** was transcribed as "D Laurie Glazier 5/8/3- ". It was written with pencil.

2.5 Window 4

Panes 3 and 12 are both broken and 10 is cracked. The inscriptions on this window are scratched into the glass toward the top of pane 13. **401** reads "Thomas W Liston 1872", to right (E) of **401**, **402** was transcribed as "D Banks Sept 5 1853". **403** below the right side of **401** was read as "Jamie".

3.0 INTERPRETATIONS AND OBSERVATIONS

3.1 Window 1

The quantity of glass inside this window suggests that as part of one or more of the phases of repairs multiple frames were replaced. A wage slip dating to 1974 was recovered from the bottom of the central line of panes; there were a couple of sherds over it but a lot more below. This would seem to suggest that although there was certainly at least one pane repaired in 1974 there were also earlier repairs.

All of the glass cleared out from behind this window was the thinner picture glass. There was a lot of glass here suggesting that as part of one of the phases of repairs multiple frames were replaced. A wage slip dating to 1974 recovered from the bottom of the central line, there were a couple of shards of glass over it but a lot more below it.

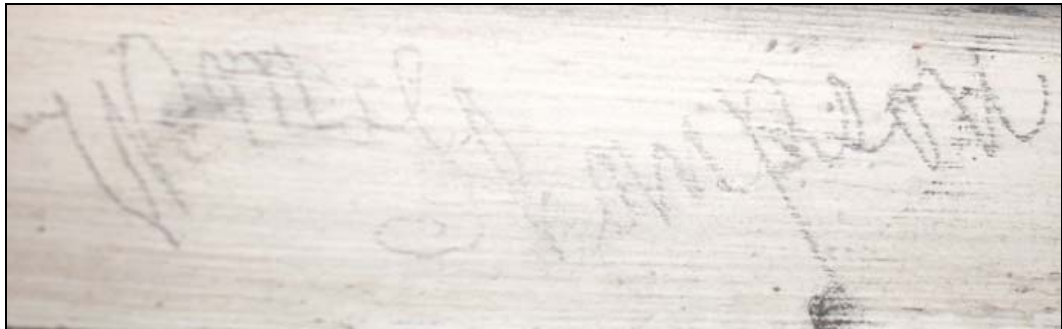
The RA in **102** is most likely traceable as an employee at the Palace.



During the recording, 001 was not fully legible but after examining the photographs it is clearly read as “William Thompson glazed this pane 15th August 1867”.



The name at the start of 003 appears to be Wm. Thompson.



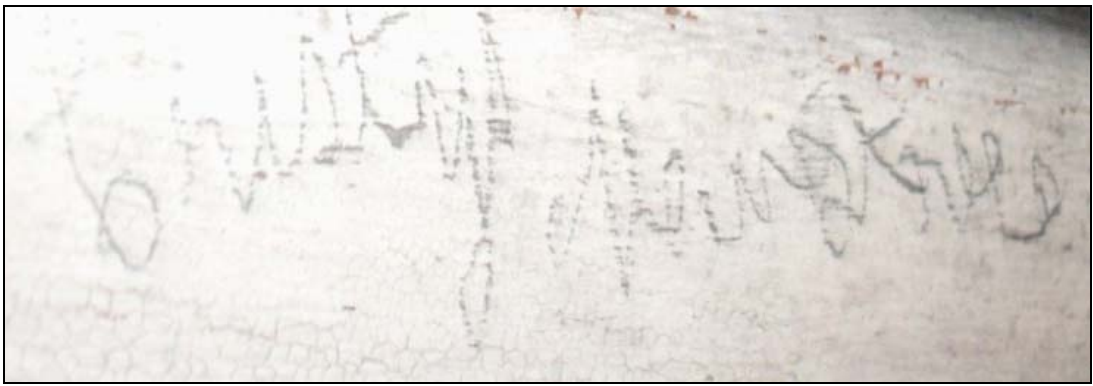
The second part of the writing has not been ascertained; perhaps the name of a building or glazing company is most likely. The first word probably ends “[...]lone” and the second looks most like “Voiliet” or “Valiet”.



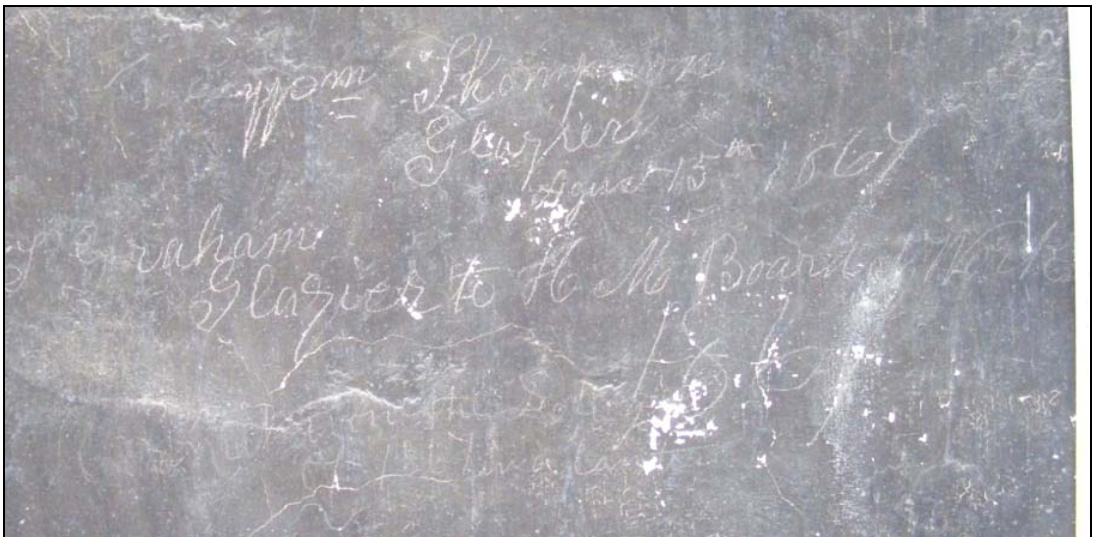
This is followed by “late of”.



A possibility is that the final part transcribes as “C[h]risty’s Newington”, a company.



004 was confidently translated as Wm. Thompson Glazier August 15th 1867” and “J Graham glazier to H M Board of Works 1867”.



William Thompson, a glazier, on the 15th August 1867 is responsible for three inscriptions on this window. At 102, on the side of frame 14, he gives his name, occupation and the date. The large number of inscriptions at this time could indicate

that this is the original fitting of the window. The alternative would seem to be that there are large-scale renovations at this time.

103, also written by William Thompson, has not been fully deciphered, it was thought possible that his present and previous employers are listed here but **104** appears to cast doubt on this and perhaps these are place names.

William (Wm) Thompson is also inscribed on the blocking behind the window at **104**, again on August 15th 1867, alongside J Graham glazier to H M Board of Works 1867. If one of the glaziers involved was employed by to H M Board of Works it seems fairly likely the other was – although that is certainly not what is written at **103**.

105 is more writing below **104**, but this has not been deciphered. **105** is under **104** on the blocking but it is not certain that it is stratigraphically earlier although that is the impression the photographs give.

3.2 **Window 2**

It appears that at least two panes have been replaced, a picture glass one from panes 1, 2 or 3 and a thicker one from pane 5.

The thick window glass, which looks fairly modern, must have been replaced with the picture glass as there were no thicker panes *in situ* at the start of this work. The fact that a window glass pane has been replaced suggests that the current one is at least third to have been in place.

The graffiti on this window is by Robert Wilson on May 13th 1884 and J Watson, a glazier in June 1900. This shows two further phases of repair.

It was not possible to record this area photographically at the time of this survey but it is hoped that further recording has been possible by Historic Scotland since (possibly by John Crae?).

3.3 **Window 3**

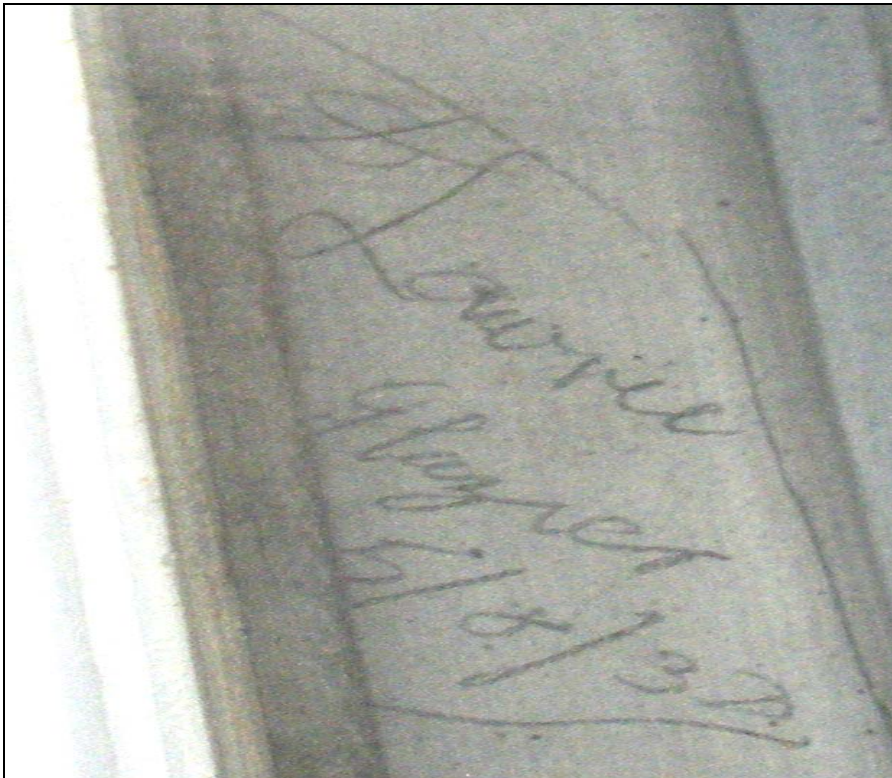
301 was clearly legible.

It has been speculated that J Douglas, James Hogg, D Ogilvie, and H Haswell may have been Board Of Works employees, it also seems likely that some or all of them

went to war soon after. Perhaps their histories could be traced.



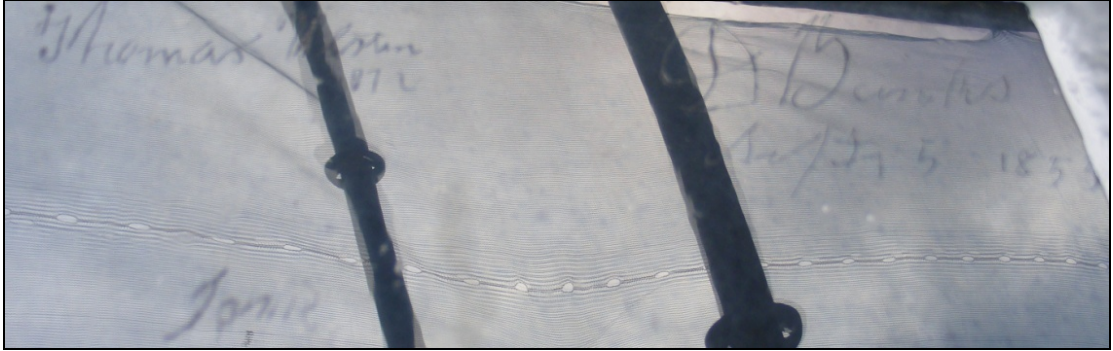
Behind pane 1, 302 was deciphered as "Lawrie Glazier 5/8/32".



3.4

Window 4

The translation, as given, for the features on pane 13 are not always entirely clear on the photographs. 401 could almost as easily read "Thomas Wilston". The date on 402 may be 1855 (rather than 1853) and partially painted over. 403 is more likely "Jon.R" than the previously suggested Jamie.



A1.0 APPENDIX 1: CONTEXT REGISTER

Window 1

#	Description
101	Copper script written with a pencil and runs vertically from top to bottom, it reads, "William Thompson glazed this pane 15 th August 1867".
102	"RA 1974", written in pencil.
103	At the base of the W side of frame 15, 103 is pencil writing, running from top to bottom, partly transcribed as "Wm. Thompson late of".
104	Wm. Thompson Glazier August 15 th 1867" and "J Graham glazier to H M Board Of Works 1867". Written on the blocking.
105	Writing under 104, not transcribed.

Window 2

#	Description
201	On the frame below pane 2 201, "Robert Wilson May 13 th 1884", has been scratched into the wood.
202	On the E edge of the frame, roughly halfway up pane 12, 202 "J Watson Glazier June 1900" is written in pencil.

Window 3

#	Description
301	On the top of the E corner of pane 15, 301 is the names "J Douglas 1913 James Hogg 1913 D Ogilvie 1913 H Haswell 1913" are scratched onto the glass.
302	Behind pane 1, on the inside of the frame, 302 transcribes as "D Laurie Glazier 5/8/ 3- "written in pencil.

Window 4

#	Description
401	"Thomas Wilston or Thomas W Liston" written on the glass of pane 13.
402	"D Banks Sept 5 1853" written on the glass of pane 13.
403	"Jon.R" or "Jamie" scratched onto the glass below 001.

HSCO-90132-2009-01-

#	Window	Description	Looking	Date
1	2	Some of the glass sherds from behind window 2.	-----	16/10/2010
2	1	Base of the E side of frame 15, 102 , "RA 1974", written in pencil.	E	16/10/2010
3	1	001 , "William Thompson glazed this pane 15 th August 1867" written in pencil.	E	16/10/2010
4	1	001 , "William Thompson glazed this pane 15 th August 1867" written in pencil.	E	16/10/2010
5	1	001 , "William Thompson glazed this pane 15 th August 1867" written in pencil.	E	16/10/2010
6	1	Inscription 103 on the bottom of the W side of frame 15.	W	16/10/2010
7	1	Start of 103 , "Wm. Thompson"	W	16/10/2010
8	1	Second part of 103 , "..... late of"	W	16/10/2010
9	1	Start of 103 , "Wm. Thompson"		16/10/2010
10	1	103 , detail of the unidentified third and fourth words.	W	16/10/2010
11	1	104 , with the un-transcribed 105 below, written on the blocking.	N	16/10/2010
12	1	104 , with the un-transcribed 105 below, written on the blocking.	N	16/10/2010
13	3	E corner of pane 15, 301 , "J Douglas 1913 James Hogg 1913 D Ogilvie 1913 H Haswell 1913" scratched onto the glass.	N	19/10/2010
14	3	E corner of pane 15, 301 .	N	19/10/2010
15	3	E corner of pane 15, 301 .	N	19/10/2010
16	3	E corner of pane 15, 301 .	N	19/10/2010
17	4	401 , Thomas Wilston or Thomas W Liston written on the glass of pane 13 with Jon. R below.	N	19/10/2010

#	Window	Description	Looking	Date
18	3	302, behind pane 1, on the inside of the frame, "D Laurie Glazier 5/8/ 3- "written in pencil.	W	19/10/2010
19	4	402, "D Banks Sept 5 1853" written on the glass of pane 13.	N	19/10/2010
20	4	401, Thomas Wilston or Thomas W Liston written on the glass of pane 13.	N	19/10/2010
21	4	402, "D Banks Sept 5 1853" written on the glass of pane 13.	N	19/10/2010
22	4	401, Thomas Wilston or Thomas W Liston written on the glass of pane 13 with Jon. R below.	N	19/10/2010
23	4	401, 402 and Jon. R below scratched on the glass of pane 13.	N	19/10/2010
24	----	Location, shot along the top of the scaffolding.	E	19/10/2010
25	----	Detail top of decorative pillar.	N	19/10/2010
26	----	Abbey from the top of the scaffolding.	N	19/10/2010
27	----	Location of the W side of the scaffolding from the W.	E	19/10/2010
28	----	Scaffolding at the E end of the S wall of the Palace.	N	19/10/2010
29	----	Scaffolding at the SE corner of the Palace.	ENE	19/10/2010