

Archaeological  
Building  
Recording  
Services

**A Photographic Survey  
The Kings Arms Inn  
Bull Ring  
Claverley  
Shropshire  
(NGR SO 79310 93371)**

**On Behalf of Oakwood Homes Ltd**



ABRS Report No 2017-KACS

# **A Photographic Survey**

**The Kings Arms Inn**

**Bull Ring**

**Claverley**

**Shropshire**

**(NGR SO 79310 93371)**

**On Behalf of Oakwood Homes Ltd**

**December 2017**

**Planning Permission 17/03879/FUL**

**ABRS Project No 2017-KACS**

Archaeological Building Recording Services (ABRS)

2-3 Lower Grove  
New Radnor  
Presteigne  
Powys  
LD8 2SS  
Tel 07423813638

email: [gerwyn.richards@archbuildservices.co.uk](mailto:gerwyn.richards@archbuildservices.co.uk)

**A Photographic Survey of The Kings Arms Inn (Former), Bull Ring, Claverley,  
Shropshire (NGR SO 79310 93371).**

Summary

1.	Introduction	1
2.	Aims and Methodology	2
3.	Photograph Location Plans	4
4.	Photographic Index	7
5.	Contact Sheets	12
6.	Archive & Publication	16
7.	Bibliography	16

## **A Photographic Survey of The Kings Arms Inn (Former), Bull Ring, Claverley, Shropshire (NGR SO 79310 93371).**

### **1. Introduction**

Archaeological Building Recording Services (ABRS) were commissioned by Oakwood Homes Ltd to undertake archaeological standing building recording (photographic survey) of The Kings Arms (Former), Bull Ring, Claverley, Shropshire (SO 79310 93371 (*Figures 1 & 2*)). Planning permission and Listed Building Consent has been granted to convert the building to residential use (Planning Application No 17/03879/FUL & LBC No 17/03880/LBC). The building is a traditionally built Grade II listed former public house, believed to date from the 18th century. The buildings are located on the south eastern corner of the Bull Ring, in the village core. The Senior Archaeological Advisor, Shropshire Council has recommended that archaeological standing building recording (photographic survey) be carried out prior to any proposed works being carried out. The building is statutorily listed at Grade II (NHLE No 1367509) and located within the Claverley Conservation Area. The listed building description describes the building thus:

*“C18 and later. Painted brick; 2 storeys; 3 casement windows; modern doorway and steps up between 2 canted bays on ground floor, each with a sash window; plain eaves and gabled ends; brick stacks; tiles. Lower gabled wing on left-hand side”.*

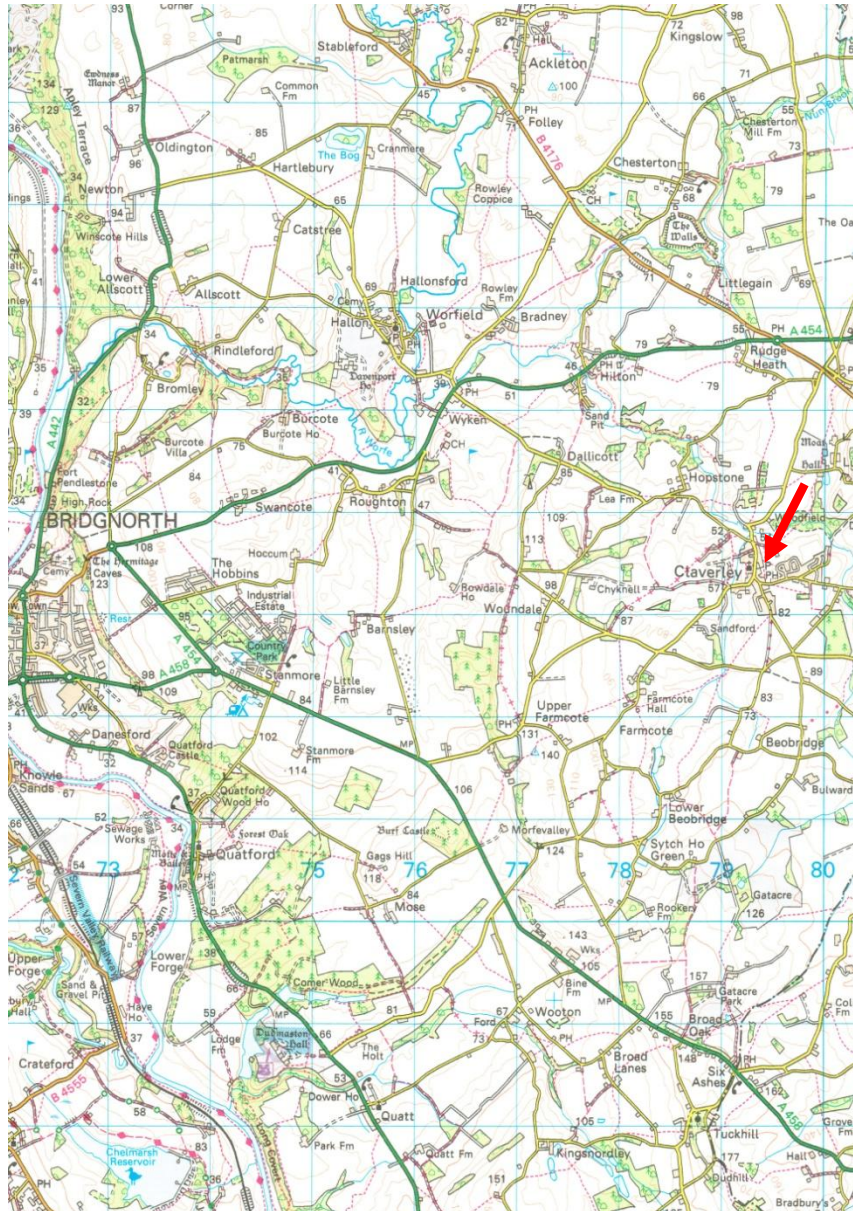
The building is a traditionally built two bay former public house fronting the Bull Ring, there is a single storey projecting rear wing, potentially later. The building is largely brick-built, but with traces of masonry on the principal elevation under a plain tile roof. The interesting arrangement of chimneys hints the building may have originated as more than one smaller dwellings.

Internally, there are extensive historical and architectural features, including evidence of timber framing which includes a possible cruck frame and step-stopped ceiling beams, potentially dating to the 16th century. On the upper floors are two potentially late 17th or early 18th century plank and batten doors.

The building contains a number of ambiguities of plan which hints at a much more complex history. Its location, opposite the church is a key and historically significant site and is likely to have been built upon from the medieval period onwards. Although the listing description describes the building as 18th century, it is likely to earlier, or at least contain elements of earlier buildings on the site.

A photographic survey was to be undertaken following standards as defined in *Understanding Historic Buildings: A guide to good recording practice* (Historic England 2016). The photographic survey addressed the requirements detailed in emailed advice issued by the Senior Archaeological Advisor, Shropshire Council.

The project was completed following the Chartered Institute for Archaeologists (CIfA) *Code of Conduct*, and adhered to their *Standards and Guidance for Archaeological Investigation and Recording of Standing Buildings or Structures* (2010).



**Figure 1 Site Location**

Reproduced from 1:50000 map by permission of Ordnance Survey on behalf of The Controller of Her Majesty's Stationary Office. ©Crown Copyright 1990. All rights reserved. Licence number 100053136.

## 2. Aims and Methodology

The aim of the survey was to provide a permanent photographic record of the building in its current state, prior to alteration or repair, to standards set down by Historic England (2016).

The photographic survey was undertaken by Gerwyn Richards. Photographs, in 35mm monochrome negative and digital format taken as raw image files and converted to TIFFs (Tagged Image File Format) were taken.

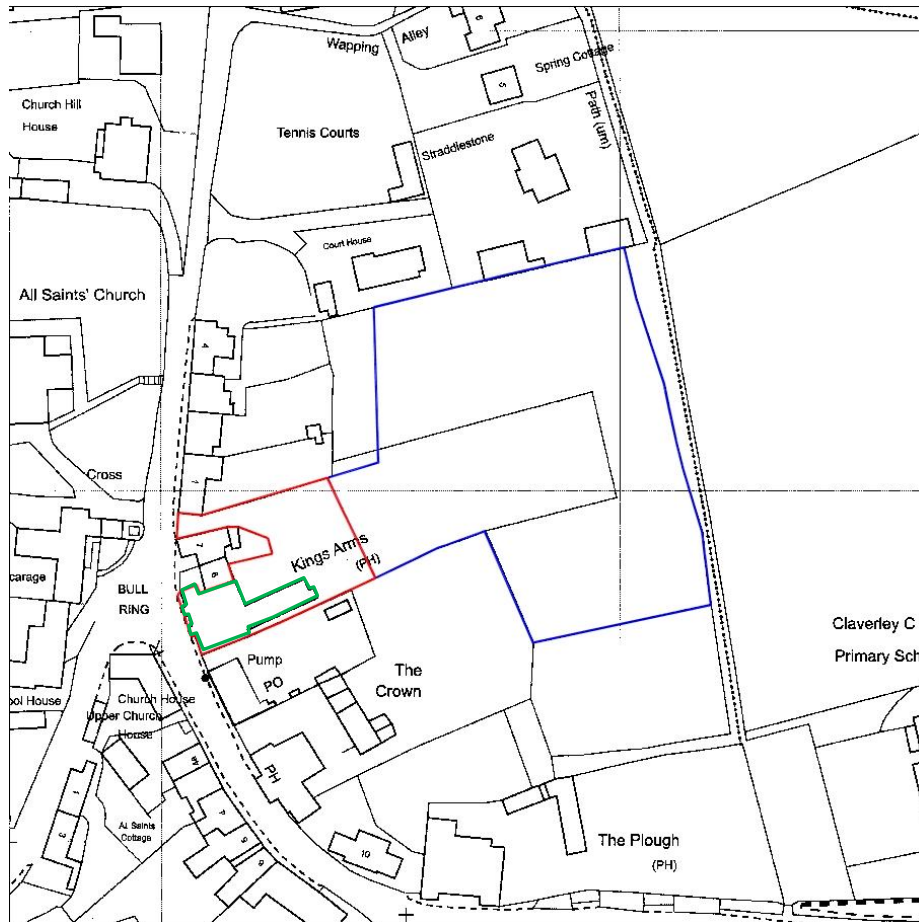
*Orientation:* The building is approximately “L” shaped in plan, aligned north-north west – south- south east and east-north east – west-south west with the principal elevation facing west-south west, for ease of description this is taken hereafter to be north – south and east – west. Where the terms ‘left’, ‘right’, ‘front’ and ‘back’ etc are used in the report, this is in

relation to the principal elevation as viewed from the west (the Bull Ring). For the purposes of this historic building recording a number prefix has been allocated to each room.

All maps and drawings are reproduced with north to top of page, following Ordnance Survey standards unless indicated otherwise with appropriate north arrow and key.

As far as is known, no previous historic building recording has been undertaken of the building.

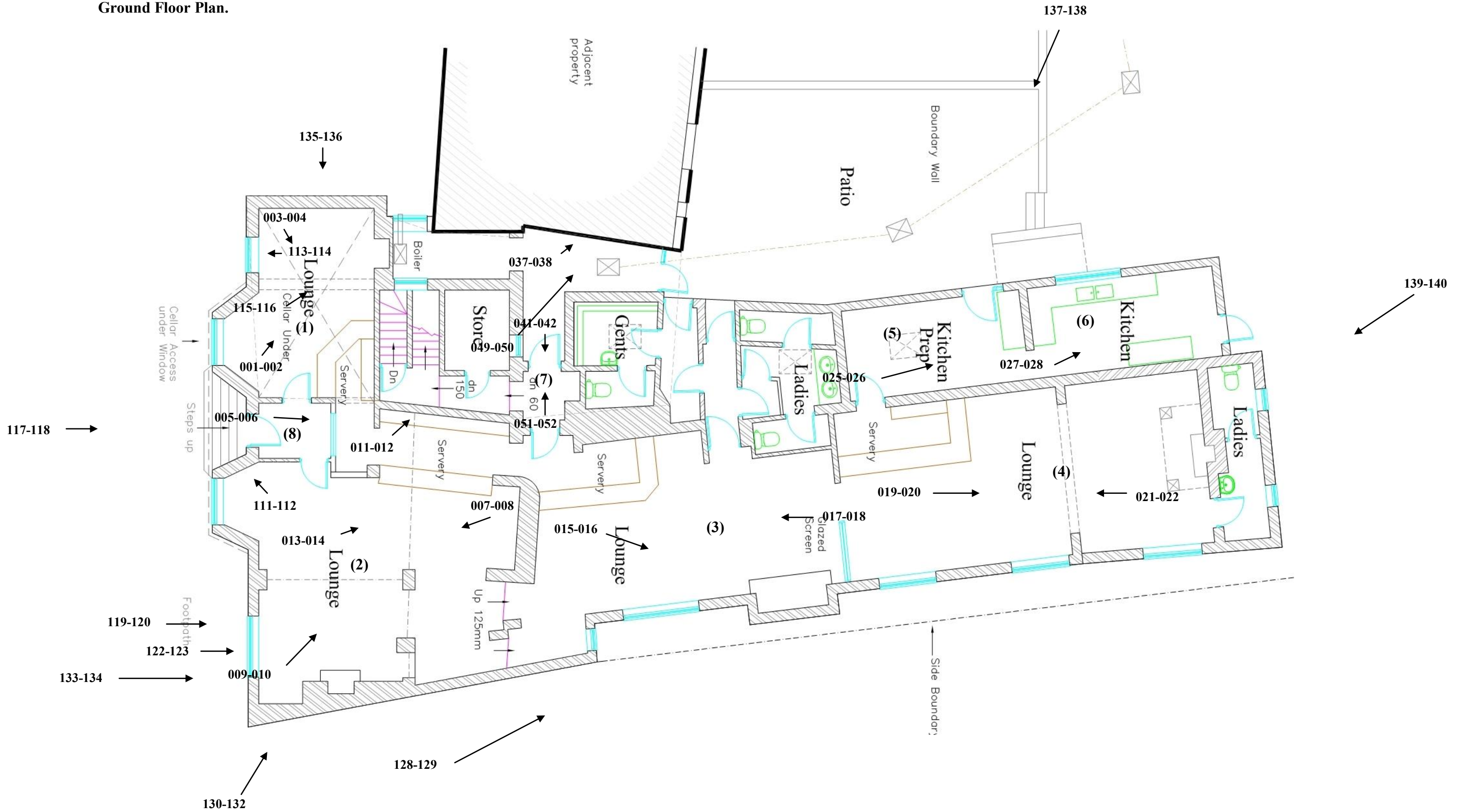
The site visit was carried out by Gerwyn Richards on December 19th 2017.



**Figure 2**  
Proposed Development Area in Detail (Recorded Building in Green).  
(Provided by client. Not to Scale).

### 3. Photograph Location Plans

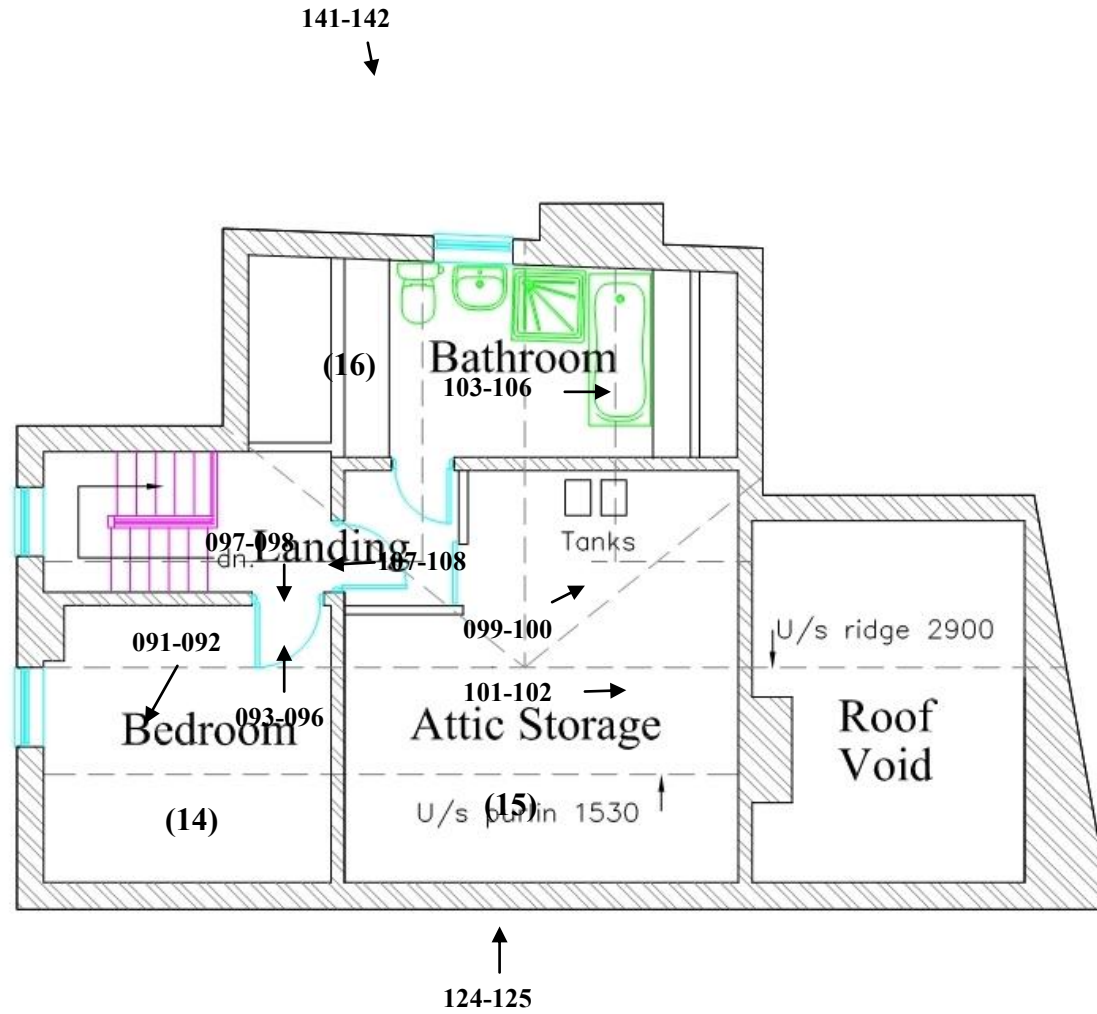
Ground Floor Plan.



# First Floor Plan







# Attic Plan

#### 4. Photographic Index

Digital	B&W	Build/Rm ID	Description	Dir
001	001	(1)	General View.	N
002	002	(1)	General View.	N
003	003	(1)	General View.	SE
004	004	(1)	General View.	SE
005	005	(8)	Serving Window.	E
006	006	(8)	Serving Window.	E
007	007	(2)	General View.	SW
008	008	(2)	General View.	SW
009	009	(2)	General View.	NE
010	010	(2)	General View.	NE
011	011	(2)	Chamfered & Stopped Beam.	
012	012	(2)	Chamfered & Stopped Beam.	
013	013	(2)	Original Beam & Ceiling Joists.	
014	014	(2)	Original Beam & Ceiling Joists.	
015	015	(3)	General View.	E
016	016	(3)	General View.	E
017	017	(3)	General View.	W
018	018	(3)	General View.	W
019	019	(4)	General View.	E
020	020	(4)	General View.	E
021	021	(4)	General View.	W
022	022	(4)	General View.	W
023	023	(3)	Roof Truss Over (3).	E
024	024	(3)	Roof Truss Over (3).	E
025	025	(5)	General View.	E
026	026	(5)	General View.	E
027	027	(6)	General View.	E
028	028	(6)	General View.	E
029	029	(17)	Easternmost Cellar.	E
030	030	(17)	Easternmost Cellar.	E
031	031	(18)	Westernmost Cellar.	S

032	032	(18)	Westernmost Cellar.	S
033	033	(18)	Vaulted Cellar & Thrall.	N
034	034	(18)	Vaulted Cellar & Thrall.	N
035	035	(17)	Cellar Stair & Blocked Opening.	NW
036	036	(17)	Cellar Stair & Blocked Opening.	NW
037	037	(7)	Gable Frame, Ltd View.	NE
038	038	(7)	Gable Frame, Ltd View.	NE
039	039	(7)	Purlin.	E
040	040	(7)	Purlin.	E
041	041	(7)	Blocked Arched Opening.	S
042	042	(7)	Blocked Arched Opening.	S
043	043	(7)	Purlin & Joists.	N
044	044	(7)	Purlin & Joists.	N
045	045	(7)	Purlin & Joists.	W
046	046	(7)	Purlin & Joists.	W
047	047	(7)	Possible Cruck Blade.	N
048	048	(7)	Possible Cruck Blade.	N
049	049	(7)	Gable Frame.	NNE
050	050	(7)	Gable Frame.	NNE
051	051	(7)	Flagstone Floor, Detail.	
052	052	(7)	Flagstone Floor, Detail.	
053	053	(9)	Chamfered & Stopped Beam.	
054	054	(9)	Chamfered & Stopped Beam.	
055	055	(9)	Corner Chimney Breast.	NE
056	056	(9)	Corner Chimney Breast.	NE
057	057	(13)	Possible Frame.	E
058	058	(13)	Possible Frame.	E
059	059	(13)	Plank Door, External.	
060	060	(13)	Plank Door, External.	
061	061	(13)	Hinge on Plank Door.	
062	062	(13)	Hinge on Plank Door.	
063	063	(13)	Possible Wall Rail.	W
064	064	(13)	Possible Wall Rail.	W
065	065	(13)	Floorboards.	
066	066	(13)	Floorboards.	

067	067	(11)	Gable Chimney Breast.	S
068	068	(11)	Gable Chimney Breast.	S
069	069	(11)	Cross Wall Chimney Breast.	N
070	070	(11)	Cross Wall Chimney Breast.	N
071	071	(10)	Chamfered & Stopped Beam, Sth End.	
072	072	(10)	Chamfered & Stopped Beam, Sth End.	
073	073	(10)	Chamfered & Stopped Beam, Nth End.	
074	074	(10)	Chamfered & Stopped Beam, Nth End.	
075	075	(10)	Original Stop @ Nth End.	
076	076	(10)	Original Stop @ Nth End.	
077	077	(10)	General View.	S
078	078	(10)	General View.	SW
079	079	(10)	General View, Inc' Blocked Opening in Cross Wall.	S
080	080	(10)	General View, Inc' Blocked Opening in Cross Wall.	S
081	081	(10)	General View, Inc' Beam.	NW
082	082	(10)	General View, Inc' Beam.	NW
083	083	(12)	General View, Inc' Underdrawn Beam.	N
084	084	(12)	General View, Inc' Underdrawn Beam.	N
085	085	(12)	General View.	SE
086	086	(12)	General View.	SE
087	087	(10)	Early Door Frame.	NNW
088	088	(10)	Early Door Frame.	NNW
089	089	(7)	Arch Over.	E
090	090	(7)	Arch Over.	E
091	091	(14)	General View.	W
092	092	(14)	General View.	W
093	093	(14)	Plank Door, Internal.	
094	094	(14)	Plank Door, Internal.	
095	095	(14)	Plank Door, Hinge.	
096	096	(14)	Plank Door, Hinge.	
097	097	(14)	Plank Door, External.	
098	098	(14)	Plank Door, External.	
099	099	(15)	Roof Structure.	SE
100	100	(15)	Roof Structure.	SE
101	101	(15)	General View.	S

102	102	(15)	General View.	S
103	103	(16)	Purlin.	SE
104	104	(16)	Purlin.	SE
105	105	(16)	Peg Holes in Purlin.	
106	106	(16)	Peg Holes in Purlin.	
107	107		Stairs, from Second Floor.	N
108	108		Stairs, from Second Floor.	N
109	109		Stairs, from First Floor.	S
110	110		Stairs, from First Floor.	S
111	111	(2)	Shutters on Bay Window.	NE
112	112	(2)	Shutters on Bay Window.	NE
113	113	(1)	Unusual Window Opening on Principal Elevation.	W
114	114	(1)	Unusual Window Opening on Principal Elevation.	W
115	115	(1)	Alcove, Probably Blocked Opening.	W
116	116	(1)	Alcove, Probably Blocked Opening.	W
117	117		Principal Elevation, General View.	W
118	118		Principal Elevation, General View.	W
119	119		Phases Visible @ Sthern End of Principal Elevation.	W
120	120		Phases Visible @ Sthern End of Principal Elevation.	W
121	121		Window Detail, External.	
122	122		Window Detail, External.	
123	123		Insurance Sign on Principal Elevation (1st Floor).	
124	124		Insurance Sign on Principal Elevation (1st Floor).	
125	125		Sth Facing Elevation.	N
126	126		Sth Facing Elevation.	N
127	127		Sth Facing Elevation, Oblique View.	ENE
128	128		Sth Facing Elevation, Oblique View.	ENE
129	129		Sth Facing Gable, Frontage Range.	N
130	130		Sth Facing Gable, Frontage Range.	N
131	131		Gable Stonework.	N
132	132		Gable Stonework.	N
133	133		Principal Elevation, Detail S'thern End.	W
134	134		Principal Elevation, Detail S'thern End.	W
135	135		Nth Facing Gable.	SE
136	136		Nth Facing Gable.	SE

137	137	Nth Facing Long Elevation, Projecting Range.	S
138	138	Nth Facing Long Elevation, Projecting Range.	S
139	139	East Facing Gable, Projecting Range.	WSW
140	140	East Facing Gable, Projecting Range.	WSW
141	141	East Facing Gable, Projecting Range, 2nd Floor.	
142	142	East Facing Gable, Projecting Range, 2nd Floor.	

## 5. Contact Sheets



2017-KACS (1)



2017-KACS (2)



2017-KACS (3)



2017-KACS (4)



2017-KACS (5)



2017-KACS (6)



2017-KACS (7)



2017-KACS (8)



2017-KACS (9)



2017-KACS (10)



2017-KACS (11)



2017-KACS (12)



2017-KACS (13)



2017-KACS (14)



2017-KACS (15)



2017-KACS (16)



2017-KACS (17)



2017-KACS (18)



2017-KACS (19)



2017-KACS (20)



2017-KACS (21)



2017-KACS (22)



2017-KACS (23)



2017-KACS (24)



2017-KACS (25)



2017-KACS (26)



2017-KACS (27)



2017-KACS (28)



2017-KACS (29)



2017-KACS (30)



2017-KACS (31)



2017-KACS (32)



2017-KACS (33)



2017-KACS (34)



2017-KACS (35)



2017-KACS (36)



2017-KACS (37)



2017-KACS (38)



2017-KACS (39)



2017-KACS (40)



2017-KACS (41)



2017-KACS (42)



2017-KACS (43)



2017-KACS (44)



2017-KACS (45)



2017-KACS (46)



2017-KACS (47)



2017-KACS (48)



2017-KACS (49)



2017-KACS (50)



2017-KACS (51)



2017-KACS (52)



2017-KACS (53)



2017-KACS (54)



2017-KACS (55)



2017-KACS (56)



2017-KACS (57)



2017-KACS (58)



2017-KACS (59)



2017-KACS (60)



2017-KACS (61)



2017-KACS (62)



2017-KACS (63)



2017-KACS (64)



2017-KACS (65)



2017-KACS (66)



2017-KACS (67)



2017-KACS (68)



2017-KACS (69)



2017-KACS (70)





2017-KACS (71)



2017-KACS (72)



2017-KACS (73)



2017-KACS (74)



2017-KACS (75)



2017-KACS (76)



2017-KACS (77)



2017-KACS (78)



2017-KACS (79)



2017-KACS (80)



2017-KACS (81)



2017-KACS (82)



2017-KACS (83)



2017-KACS (84)



2017-KACS (85)



2017-KACS (86)



2017-KACS (87)



2017-KACS (88)



2017-KACS (89)



2017-KACS (90)



2017-KACS (91)



2017-KACS (92)



2017-KACS (93)



2017-KACS (94)



2017-KACS (95)



2017-KACS (96)



2017-KACS (97)



2017-KACS (98)



2017-KACS (99)



2017-KACS (100)



2017-KACS (101)



2017-KACS (102)



2017-KACS (103)



2017-KACS (104)



2017-KACS (105)



2017-KACS (106)



2017-KACS (107)



2017-KACS (108)



2017-KACS (109)



2017-KACS (110)



2017-KACS (111)



2017-KACS (112)



2017-KACS (113)



2017-KACS (114)



2017-KACS (115)



2017-KACS (116)



2017-KACS (117)



2017-KACS (118)



2017-KACS (119)



2017-KACS (120)



2017-KACS (121)



2017-KACS (122)



2017-KACS (123)



2017-KACS (124)



2017-KACS (125)



2017-KACS (126)



2017-KACS (127)



2017-KACS (128)



2017-KACS (129)



2017-KACS (130)



2017-KACS (131)



2017-KACS (132)



2017-KACS (133)



2017-KACS (134)



2017-KACS (135)



2017-KACS (136)



2017-KACS (137)



2017-KACS (138)



2017-KACS (139)



2017-KACS (140)



2017-KACS (141)



2017-KACS (142)

## 6. Archive & Publication

The site archive consists of

- 1 A3 paper plan showing photo locations
- 2 DVDs containing 142 digital images
- 5 A4 contact sheets
- 142 Black & White negatives and contact prints
- 5 A4 photo record sheets
- An unbound copy of this report

The archive will be retained by ABRS until deposition with the relevant local repository can be arranged.

### 6.1 OASIS Record Summary

INFORMATION REQUIRED	UPLOADED AS
OASIS No	archaeol30-305843
Project Name	A Photographic Survey of The Kings Arms Inn (Former), Bull Ring, Claverley, Shropshire.
Site Co-ordinates	SO 79310 93371
Project Type	Standing Building Recording (Photographic Survey)
Project Manager	Gerwyn Richards
Previous/Future Work?	No/Not Known
Current Land Use	In Use As Building
Development Type	Residential
Prompt	NPPF
Archive Recipient	ABRS

## 7. References & Sources

Brandwood, G. 2013 *Britain's Best Real Ale Heritage Pubs – Pub Interiors on Outstanding Historic Interest*. CAMRA

Brunskill, R.W. 1993 *Traditional Buildings of Britain*. Victor Gollancz.

[http://www.heritagegateway.org.uk/Gateway/Results\\_Application.aspx?resourceID=1018](http://www.heritagegateway.org.uk/Gateway/Results_Application.aspx?resourceID=1018)

Hall, L. 2004 *Period House, Fixtures & Fittings 1300-1900*. Newbury.

Historic England. 2016 *Understanding Historic Buildings: A guide to good recording practice*. London.

M<sup>c</sup>Kay, W.B 1945 *Building Craft Series, Brickwork*. Longmans, Green & Co.

Archaeological Building Recording Services (ABRS)

2-3 Lower Grove

New Radnor

Presteigne

Powys

LD8 2SS

email: [gerwyn.richards@archbuildservices.co.uk](mailto:gerwyn.richards@archbuildservices.co.uk)