

Archaeological
Building
Recording
Services

**A Photographic Survey
Barrack House
The Barracks
Barwell
Leicestershire
(NGR SP 44291 96765)**

On Behalf of NS & PS Property Developments Ltd



A Photographic Survey

Barrack House

The Barracks

Barwell

Leicestershire

(NGR SP 44291 96765)

On Behalf of NS & PS Property Developments Ltd

September 2018

**Planning Permission No
15/00638/OUT**

ABRS Project No 2018-BHBL

**Leicestershire Museums &
Archaeology Collections Accession
No X.A96.2018**

Archaeological Building Recording Services (ABRS)

Chandos Business Centre
87 Warwick Street
Leamington Spa
Warwickshire
CV32 4RJ
Tel 07423813638

email: gerwyn.richards@archbuildservices.co.uk

**A Photographic Survey of Barrack House, The Barracks, Barwell, Leicestershire
(NGR SP 44291 96765).**

Summary

1.	Introduction	1
2.	Aims and Methodology	2
3.	Description of the Building	4
4.	Conclusion	4
5.	Archive & Publication	5
6.	References & Sources	5
7.	Colour Plates	6
8.	Floor Plan Showing Photographic Locations.	9
9.	Photographic Index & Contact Sheet.	11

Figures

Figure 1	2	Figure 2	4
Site Location		Plan of the Proposed Development Area (in Red), recorded Building (in Green).	
Figure 3	7	Figure 4	7
Original Factory Building, Principal Elevation (Looking South West).		Original Factory, Ground Floor (Looking South).	
Figure 5	8	Figure 6	8
Original Factory, First Floor (Looking South).		Queen Post Truss in Original Building.	
Figure 7	9	Figure 8	9
Western Concrete Framed Extension, Principal Elevation (Looking South West).		Southern Concrete Framed Extension (Looking South East).	

A Photographic Survey of Barrack House, The Barracks, Barwell, Leicestershire (NGR SP 44291 96765).

Summary

This document is an archaeological building survey (photographic survey) of Barrack House, The Barracks, Barwell, Leicestershire (SP 44291 96765), commissioned from Archaeological Building Recording Services (ABRS) by NS & PS Property Developments Ltd in advance of the part demolition and conversion of the building and re-development of the site to residential use.

The original building is a traditionally built factory building, later extended in the modernist style to create a visually interesting building reflecting the evolution of small scale regional manufacturing. The cramped site however prevented the factory from expanding, hampering the productivity and economic viability of the site. These late 19th and early 20th century small factory buildings were a key feature of the villages and small towns of this part of Leicestershire and are rapidly disappearing from the landscape.

The photographic survey provided a permanent visual (photographic) record of the buildings in their current state. The archive will be held by Leicestershire County Council Museums Service, under the accession number X.A96.2018.

1. Introduction

Archaeological Building Recording Services (ABRS) were commissioned by NS & PS Property Developments Ltd to undertake historic building recording (photographic survey) of Barrack House, The Barracks, Barwell, Leicestershire (SP 44291 96765 (*Figures 1 & 2*)). Planning permission has been granted for the part demolition of the building, conversion of the retained sections and the re-development of the site to residential use (Planning Permission No 15/00638/OUT). The building is a traditionally built early 20th century factory building with mid to late 20th century extensions. The Principal Planning Archaeologist of Leicestershire County Council, as advisor to Hinckley & Bosworth Borough Council, has recommended that an archaeological standing building recording (photographic survey) be carried out prior to any proposed works being carried out. The building is not statutorily listed, but is located within a designated Conservation Area, Barwell Conservation Area, Area A - High Street.

A photographic survey was to be undertaken following standards as defined in *Understanding Historic Buildings: A guide to good recording practice* (Historic England 2016). The photographic survey addressed the requirements detailed in the Generic Brief For Historic Building Photographic Survey, supplied by Historic & Natural Environment Team Leicestershire County Council and followed the *Written Scheme of Investigation for Historic Building Inspection & Recording* (2018-BHBL_WSI).



Figure 1
Site Location

Reproduced from 1:50000 map by permission of Ordnance Survey on behalf of The Controller of Her Majesty's Stationary Office.
©Crown Copyright 1990. All rights reserved. Licence number 100053136.

The proposed development area lies to the south of the Barracks. The standing building consists of a largely linear building, with an early 20th century core and a number of mid to late 20th century extensions. The earliest element is brick-built under a pitched Welsh slate roof, gable on to The Barracks, this part is first recorded by the 1929 Ordnance Survey. This building was later extended to the south and the west with concrete framed and brick panelled extensions, both under north light roofs. Cartographic sources indicate this was carried out prior to 1964.

The factory was originally the Bennett and Company Works. The company was established in 1885 by Caleb Bennett and made women's medium grade fashion shoes.

2. Aims and Methodology

The aim of the survey was to provide a permanent photographic record of the building in its current state, prior to alteration or repair, to standards set down by Historic England (2016).

The photographic survey was undertaken by Gerwyn Richards. Photographs, in 35mm monochrome negative and digital format were taken as raw image files and converted to TIFFs (Tagged Image File Format) include items 1-7 of the Historic England specification for photography (2016). The site visit was carried out on September 10th 2018.



Figure 2
Plan of the Proposed Development Area (in Red), recorded Building (in Green).
(Provided by client. 1:1250)

Orientation: The building subject to this recording is approximately linear in plan, aligned north – north east to south – south west (*Figure 2*). For ease of description this is taken hereafter to be north – south with the principal elevation facing to the north. Where the terms ‘left’, ‘right’, ‘front’ and ‘back’ etc are used in the report, this is in relation to this principal elevation as viewed from the north. For the purpose of this report a number prefix has been allocated for significant partitions where required.

As far as is known, no previous historic building recording has been undertaken of the building.

3. Description of the Building

The earliest building within the proposed development area is a brick-built linear range occupying the south westernmost boundary. This building is a two storey building, gable on to The Barracks under a pitched Welsh slate roof (*Figure 3*). Internally, the building is little altered from its original factory layout (*Figures 4 & 5*). The roof is carried on Queen post trusses in deal (*Figure 6*). This earlier building has been extended to both the south and to the west with concrete frame extensions (*Figures 7 & 8*), these extensions, although early 20th century modernist in appearance, according to cartographic sources date to the 1950s or 1960s. Both extensions are under north light roofs carried on steel trusses, the steel in each extension is from different sources, suggesting the extensions are not contemporary.

The building retains a number of historical features, such as layout, floors, sinks and a sliding window, no doubt for wages. It also retains limited traces of the building's social history, including pin ups from the 1950s or 1960s, mainly male pop stars suggesting a predominately female workforce and a framed copy of the Factories Act (1937) referring to working conditions for women and young persons, again an indication of the workforce.

4. Conclusion

The photographic survey carried out of Barrack House provides a permanent visual (photographic) record of the building in its current condition prior to partial demolition and conversion. The building dates to the early 20th century with mid to late 20th century extensions.

The original building is a traditionally built factory building, almost Victorian in appearance, this was later extended in the modernist style, albeit some years too late, to create a visually interesting building reflecting the evolution of small scale regional manufacturing. The cramped site, however prevented the factory from adopting the "American system" – factories retaining all manufacturing operations within a large single level open space illuminated by north lights above – and therefore prevented the expansion of the factory and hampered the productivity and economic viability of the site.

These late 19th and early 20th century small factory buildings were a key feature of the villages and small towns of this part of Leicestershire and are rapidly disappearing from the landscape.

5. Archive & Publication

The site archive consists of

- 3 DVDs containing 120 digital images
- 4 A4 contact sheets
- 120 Black & White negatives and contact prints
- 4 A4 photo record sheets
- 1 Unbound copy of this report

The archive will be held by Leicestershire County Council under the Accession Number X.A96. 2018.

A version of the summary (above) will be submitted to the editor of the local journal *Transactions of Leicestershire Archaeological and Historical Society* for inclusion in the next edition.

5.1 OASIS Record Summary

INFORMATION REQUIRED	UPLOADED AS
OASIS No	archaeol30-328386
Project Name	A Photographic Survey of Barrack House, The Barracks, Barwell, Leicestershire.
Site Co-ordinates	SP 44291 96765
Project Type	Standing Building Recording (Photographic Survey)
Project Manager	Gerwyn Richards
Previous/Future Work?	No/No
Current Land Use	In Use As Building
Development Type	Residential
Prompt	NPPF
Archive Recipient	Leicestershire Museums Archaeology Collections

6. Bibliography

Hinckley & Bosworth Borough Council. 2000 *Barwell & Earl Shilton Boot and Shoe Trail*

Hinckley & Bosworth Borough Council. 2010 *Barwell Conservation Areas Appraisal, Area A - High Street Area B - Arthur Street*

Historic England. 2016 *Understanding Historic Buildings: A guide to good recording practice*. London: English Heritage.

Holmes, D. 2009 *Development Of The Boot And Shoe Industry In Leicester During The Nineteenth Century*. Trans. Leicestershire Archaeol. & Hist. Soc., 83 (2009)

7. Colour Plates

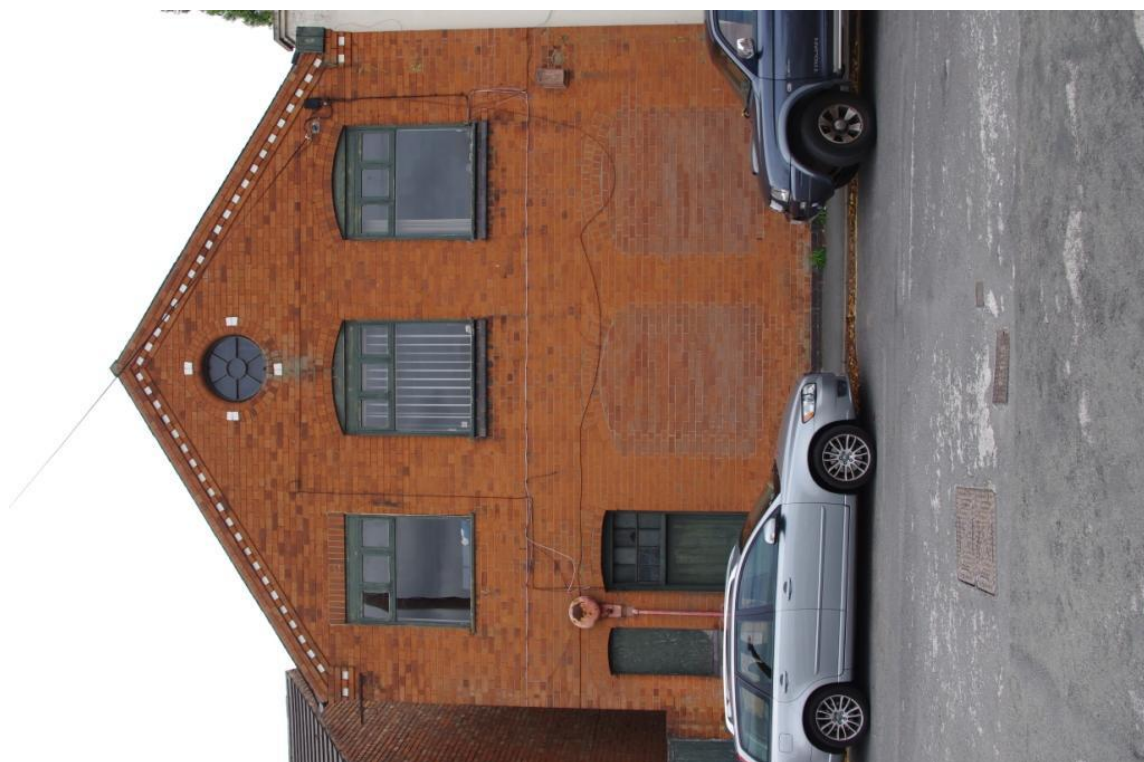


Figure 3
Original Factory Building, Principal
Elevation (Looking South West).



Figure 4
Original Factory, Ground Floor (Looking South).

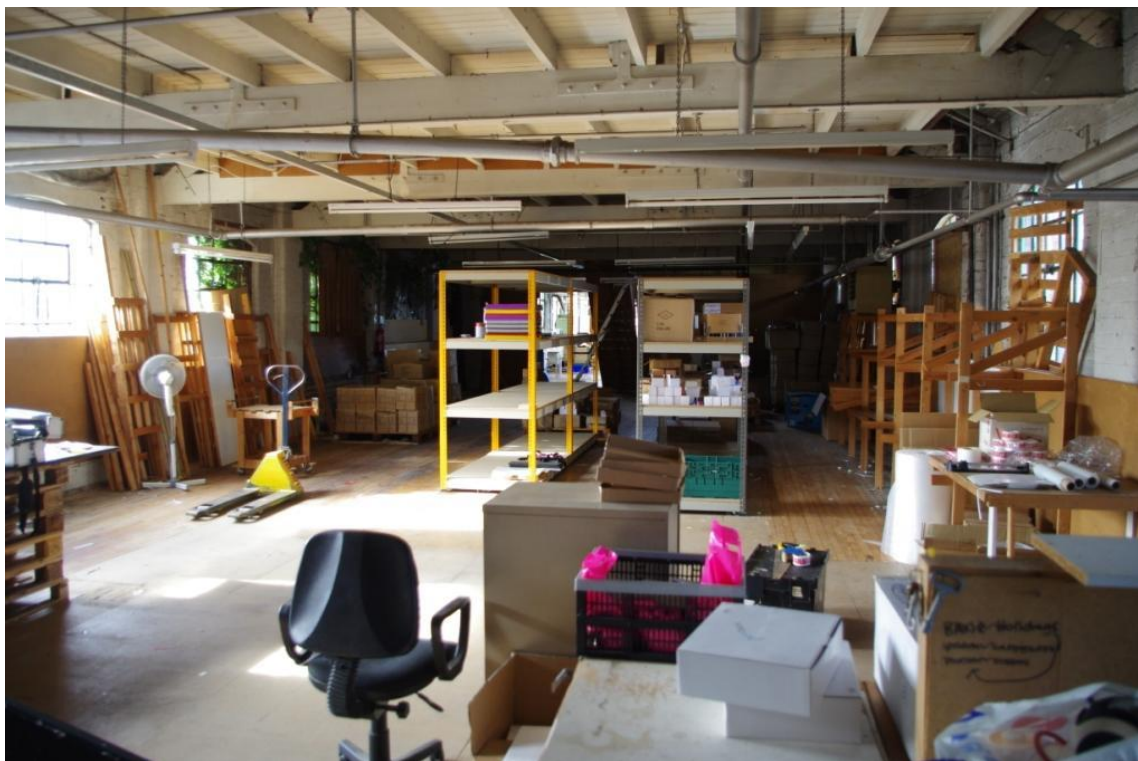


Figure 5
Original Factory, First Floor (Looking South).



Figure 6
Queen Post Truss in Original Building.

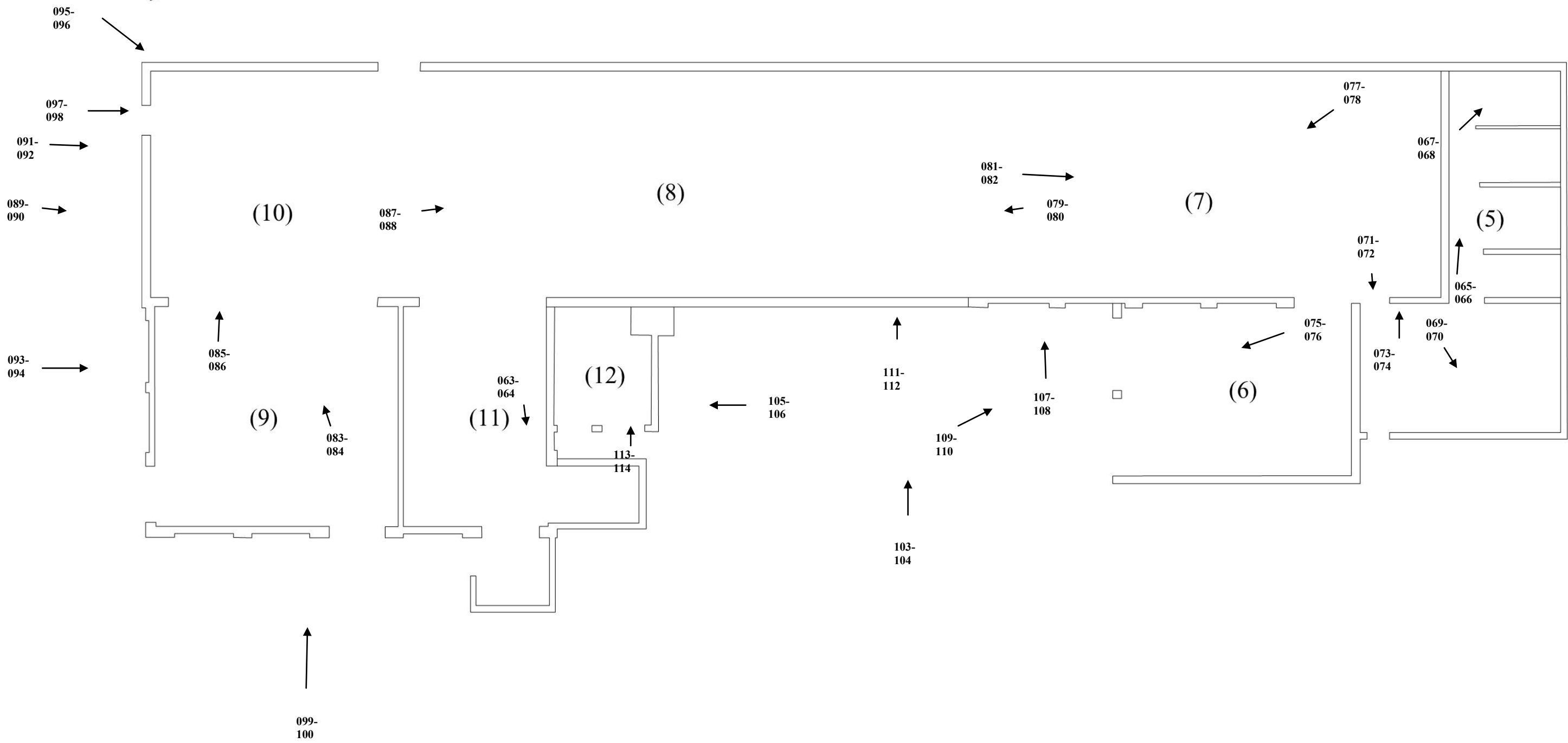
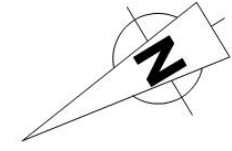


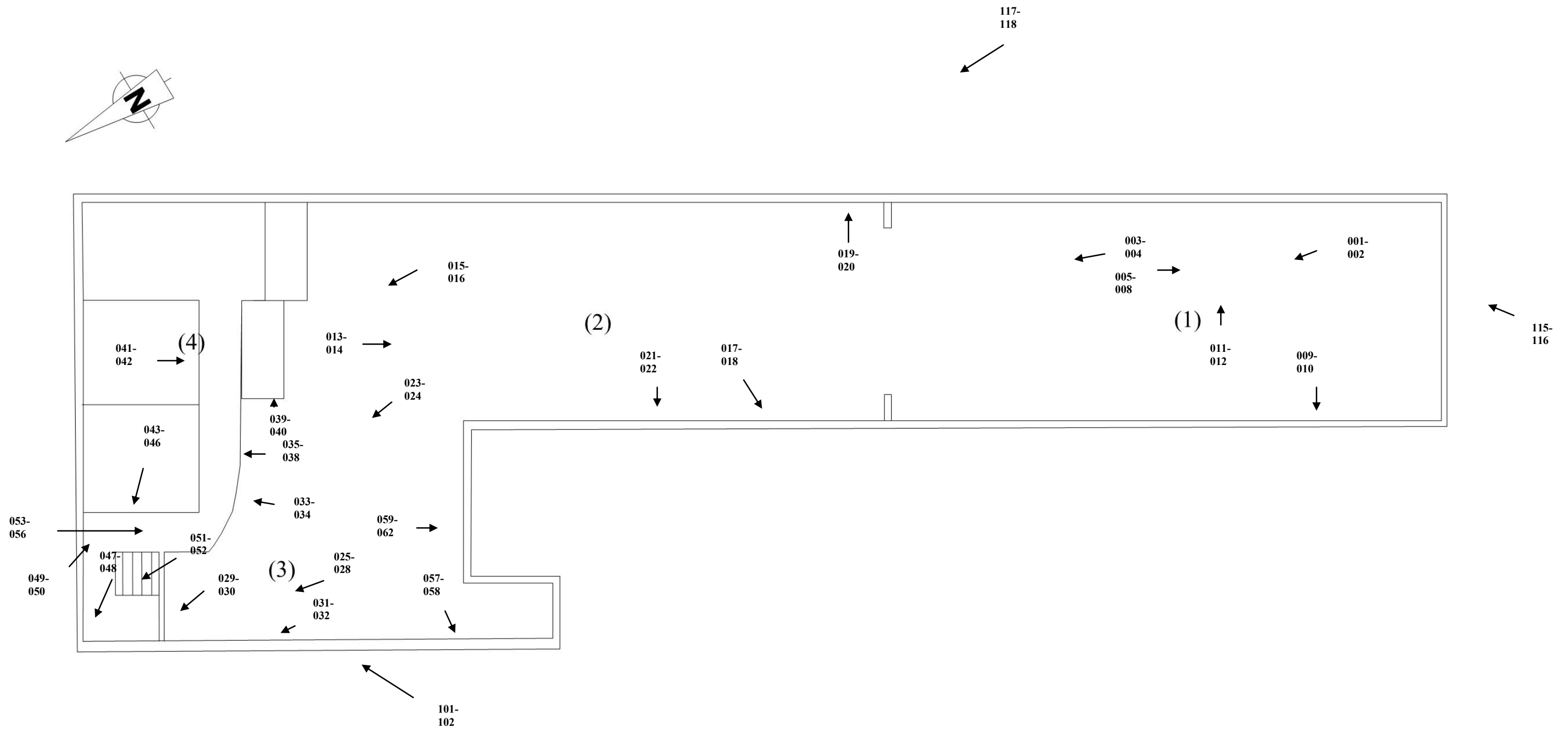
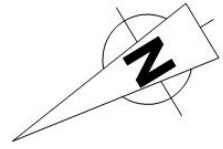
Figure 7
Western Concrete Framed Extension,
Principal Elevation (Looking South
West).



Figure 8
Southern Concrete Framed Extension
(Looking South East).

8. Floor Plan Showing Photographic Locations.





9. Photographic Index & Contact Sheet.



X_A96_2018 (1)



X_A96_2018 (2)



X_A96_2018 (3)



X_A96_2018 (4)



X_A96_2018 (5)



X_A96_2018 (6)



X_A96_2018 (7)



X_A96_2018 (8)



X_A96_2018 (9)



X_A96_2018 (10)



X_A96_2018 (11)



X_A96_2018 (12)



X_A96_2018 (13)



X_A96_2018 (14)



X_A96_2018 (15)



X_A96_2018 (16)



X_A96_2018 (17)



X_A96_2018 (18)



X_A96_2018 (19)



X_A96_2018 (20)



X_A96_2018 (21)



X_A96_2018 (22)



X_A96_2018 (23)



X_A96_2018 (24)



X_A96_2018 (25)



X_A96_2018 (26)



X_A96_2018 (27)



X_A96_2018 (28)



X_A96_2018 (29)



X_A96_2018 (30)



X_A96_2018 (31)



X_A96_2018 (32)



X_A96_2018 (33)



X_A96_2018 (34)



X_A96_2018 (35)



X_A96_2018 (36)



X_A96_2018 (37)



X_A96_2018 (38)



X_A96_2018 (39)



X_A96_2018 (40)



X_A96_2018 (41)



X_A96_2018 (42)



X_A96_2018 (43)



X_A96_2018 (44)



X_A96_2018 (45)



X_A96_2018 (46)



X_A96_2018 (47)



X_A96_2018 (48)



X_A96_2018 (49)



X_A96_2018 (50)



X_A96_2018 (51)



X_A96_2018 (52)



X_A96_2018 (53)



X_A96_2018 (54)



X_A96_2018 (55)



X_A96_2018 (56)



X_A96_2018 (57)



X_A96_2018 (58)



X_A96_2018 (59)



X_A96_2018 (60)



X_A96_2018 (61)



X_A96_2018 (62)



X_A96_2018 (63)



X_A96_2018 (64)



X_A96_2018 (65)



X_A96_2018 (66)



X_A96_2018 (67)



X_A96_2018 (68)



X_A96_2018 (69)



X_A96_2018 (70)



X_A96_2018 (71)



X_A96_2018 (72)



X_A96_2018 (73)



X_A96_2018 (74)



X_A96_2018 (75)



X_A96_2018 (76)



X_A96_2018 (77)



X_A96_2018 (78)



X_A96_2018 (79)



X_A96_2018 (80)



X_A96_2018 (81)



X_A96_2018 (82)



X_A96_2018 (83)



X_A96_2018 (84)



X_A96_2018 (85)



X_A96_2018 (86)



X_A96_2018 (87)



X_A96_2018 (88)



X_A96_2018 (89)



X_A96_2018 (90)



X_A96_2018 (91)



X_A96_2018 (92)



X_A96_2018 (93)



X_A96_2018 (94)



X_A96_2018 (95)



X_A96_2018 (96)



X_A96_2018 (97)



X_A96_2018 (98)



X_A96_2018 (99)



X_A96_2018 (100)



X_A96_2018 (101)



X_A96_2018 (102)



X_A96_2018 (103)



X_A96_2018 (104)



X_A96_2018 (105)



X_A96_2018 (106)



X_A96_2018 (107)



X_A96_2018 (108)



X_A96_2018 (109)



X_A96_2018 (110)



X_A96_2018 (111)



X_A96_2018 (112)



X_A96_2018 (113)



X_A96_2018 (114)



X_A96_2018 (115)



X_A96_2018 (116)



X_A96_2018 (117)



X_A96_2018 (118)



X_A96_2018 (119)



X_A96_2018 (120)

Digital	B&W	Build/Rm ID	Description	Dir
001	001	(1)	General View, Internal.	N
002	002	(1)	General View, Internal.	N
003	003	(1)	Roof Truss.	NNE
004	004	(1)	Roof Truss.	NNE
005	005	(1)	Markers Stamps on Roof Truss.	
006	006	(1)	Markers Stamps on Roof Truss.	
007	007	(1)	Markers Stamps on Roof Truss.	
008	008	(1)	Markers Stamps on Roof Truss.	
009	009	(1)	Door, Detail.	
010	010	(1)	Door, Detail.	
011	011	(1)	Floor, Detail.	
012	012	(1)	Floor, Detail.	
013	013	(2)	General View, Internal.	SSW
014	014	(2)	General View, Internal.	SSW
015	015	(2)	Queen Post Truss.	N
016	016	(2)	Queen Post Truss.	N
017	017	(2)	Window Detail, Internal.	
018	018	(2)	Window Detail, Internal.	
019	019	(2)	Door Detail, Internal.	SE
020	020	(2)	Door Detail, Internal.	SE
021	021	(2)	Floor, Detail.	
022	022	(2)	Floor, Detail.	
023	023	(3)	General View, Internal.	NW
024	024	(3)	General View, Internal.	NW
025	025	(3)	Roof Truss.	NW
026	026	(3)	Roof Truss.	NW
027	027	(3)	Markers Stamps on Roof Truss.	
028	028	(3)	Markers Stamps on Roof Truss.	
029	029	(3)	Window Detail, Internal.	
030	030	(3)	Window Detail, Internal.	
031	031	(3)	1950s/60s Pin Ups on Paneled Partition.	
032	032	(3)	1950s/60s Pin Ups on Paneled Partition.	
033	033	(3)	Paneled Partition, General View.	ENE
034	034	(3)	Paneled Partition, General View.	ENE

035	035	(3)	Door, Detail.	
036	036	(3)	Door, Detail.	
037	037	(3)	Sign Writing.	
038	038	(3)	Sign Writing.	
039	039	(3)	Framed Factories Act (1937).	
040	040	(3)	Framed Factories Act (1937).	
041	041	(4)	Company Safe.	
042	042	(4)	Company Safe.	
043	043	(4)	1950s/60s Office, General View.	NW
044	044	(4)	1950s/60s Office, General View.	NW
045	045	(4)	Wages Window.	
046	046	(4)	Wages Window.	
047	047	(4)	Waiting Area.	NW
048	048	(4)	Waiting Area.	NW
049	049	(4)	Paneled Partition, General View.	SE
050	050	(4)	Paneled Partition, General View.	SE
051	051	(4)	Stair Paneling.	
052	052	(4)	Stair Paneling.	
053	053	(4)	Door, Detail.	
054	054	(4)	Door, Detail.	
055	055	(4)	Door, Detail.	
056	056	(4)	Door, Detail.	
057	057	(3)	Sink.	
058	058	(3)	Sink.	
059	059	(3)	Butlers Lift.	SW
060	060	(3)	Butlers Lift.	SW
061	061	(3)	Lift Control Panel.	
062	062	(3)	Lift Control Panel.	
063	063	(11)	Stairs.	NW
064	064	(11)	Stairs.	NW
065	065	(5)	General View, Internal.	SE
066	066	(5)	General View, Internal.	SE
067	067	(5)	SE Bay, Detail.	SE
068	068	(5)	SE Bay, Detail.	SE
069	069	(5)	Floor, Detail.	

070	070	(5)	Floor, Detail.	
071	071	(6)	Door, Detail.	NW
072	072	(6)	Door, Detail.	NW
073	073	(6)	Blocked Window?	SE
074	074	(6)	Blocked Window?	SE
075	075	(6)	General View, Internal.	N
076	076	(6)	General View, Internal.	N
077	077	(7)	General View, Internal.	NNE
078	078	(7)	General View, Internal.	NNE
079	079	(7)	Floor, Detail.	
080	080	(7)	Floor, Detail.	
081	081	(7)	General View, Internal.	S
082	082	(7)	General View, Internal.	S
083	083	(9)	General View, Internal.	E
084	084	(9)	General View, Internal.	E
085	085	(10)	General View, Internal.	SE
086	086	(10)	General View, Internal.	SE
087	087	(8)	General View, Internal.	S
088	088	(8)	General View, Internal.	S
089	089	(9) & (10)	Principal Elevation.	SW
090	090	(9) & (10)	Principal Elevation.	SW
091	091	(10)	Principal Elevation.	SW
092	092	(10)	Principal Elevation.	SW
093	093	(9)	Principal Elevation.	SW
094	094	(9)	Principal Elevation.	SW
095	095	(10)	Change in Brickwork Between Principal & Long Elevation.	
096	096	(10)	Change in Brickwork Between Principal & Long Elevation.	
097	097	(10)	Door Detail, External.	SW
098	098	(10)	Door Detail, External.	SW
099	099	(9)	NW Facing Elevation.	SE
100	100	(9)	NW Facing Elevation.	SE
101	101	(3)	Crane.	
102	102	(3)	Crane.	
103	103	(2) & (8)	NW Facing Elevation.	SE
104	104	(2) & (8)	NW Facing Elevation.	SE

105	105	(11)	SW Facing Elevation.	NE
106	106	(11)	SW Facing Elevation.	NE
107	107	(1) & (7)	NW Facing Elevation.	SE
108	108	(1) & (7)	NW Facing Elevation.	SE
109	109	(6)	General View, External.	S
110	110	(6)	General View, External.	S
111	111	(8)	Window Detail, External.	SE
112	112	(8)	Window Detail, External.	SE
113	113	(12)	Boiler.	SE
114	114	(12)	Boiler.	SE
115	115	(1)	SW Facing Elevation.	ENE
116	116	(1)	SW Facing Elevation.	ENE
117	117	(1) & (2)	SE Facing Elevation.	NW
118	118	(1) & (2)	SE Facing Elevation.	NW
119	119		Barracks Elevations.	SW
120	120		Barracks Elevations.	SW

Archaeological Building Recording Services (ABRS)

Chandos Business Centre
87 Warwick Street
Leamington Spa
Warwickshire
CV32 4RJ

Tel 07423813638

email gerwyn.richards@archbuildservices.co.uk