

NOTTINGHAM 1973
FISHER GATE

FG 73
SITE NOTEBOOK 8
AREA J

& MAIN E. SECTION & MAIN N. SECTION

FG 73 8 [J] & MAIN E + N SECTIONS

the number of ...
...

is the ...

(100) / (100) / (100)

by ...

? Any possibility of associating features with light grey staining of natural

ie. (108) but staining here probably from (100)

(141) / (143) / (152) + area

S end of (131) but? from earlier pit

CONT. FROM NOTEBOOK 7.

NEXT NUMBER J (178)

General Note

Having photographed sectioned features at E. end of site, S. of F/S, excavation there is continuing (G4) by removing the remaining filling from the sectioned features.

Isolated features — taken straight out.

Complex features/sections — stratigraphically or by working to a section running few inches at a time — to base sockets etc. etc.

Any finds from features to be given feature number plus suffix. So see back to appropriate feature numbers.

? wonder if this really was an edge for (131) cutting (178)? Check if hills are similar. ? wonder if (178) could have extended W. over (133) etc? C.Y. 1981.

(178) Shallow pit or hole of levelled-off pit in Nat B/S E. of and cut through by (131). Not sectioned.
 ? If levelled off should (131) etc be part of building B, as leveling was for that structure. Or ? another period of leveling.

Filling of pit = dark occupation type layers. As (131) etc. NOT like clean filling of other pits etc. only other grey-filled ones = (1463) / (152) etc.

Slightly deeper (about 1" or so) than (131).

Fill of (178) —

(178A) Fawn-brown sandy soil, very silty, with small lumps of red clay. Yellowing seen from surface. Mainly towards S. side of pit.

POT (178B) Dark blue-grey silty/sandy — again mainly S. side of pit.

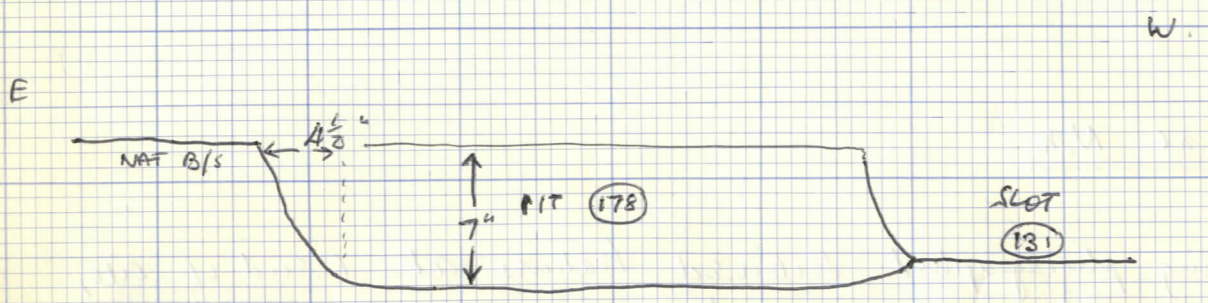
POT (178C) Pale grey, yellow-mottled v. sandy soil with flecks of dark grey v. sandy soil.

This sounds very like (128) + (129) which filled (131) was the edge to (131) a pseudo-edge due to dipping layers?

There is a 3" thick irregular block of slippy c. 12" x 9" on nat. at pit bottom, approximately unobliquely placed — perhaps more towards the N.

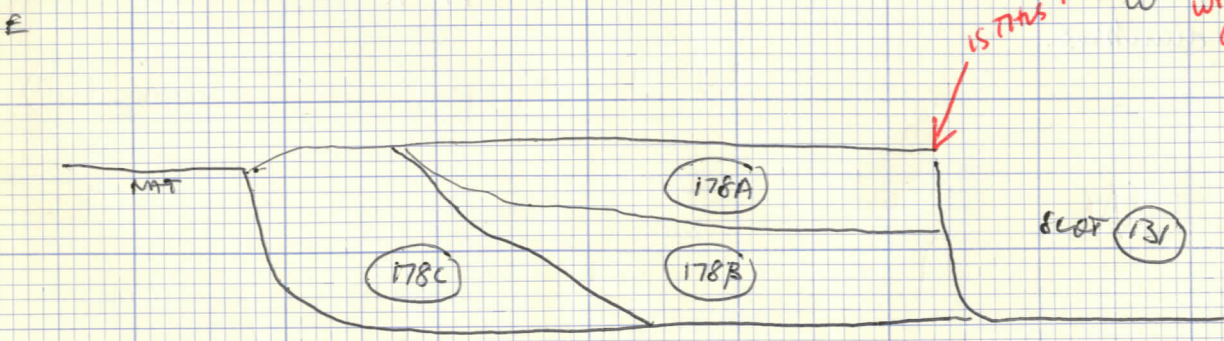
? does this indicate a post or an other stone random. V. large for post pit, + (178C) also the stone — in solid seen thro' pit. Position a plan is approx. sketch as C.Y. took it out with pit-filling.

Excavated profile of (178)

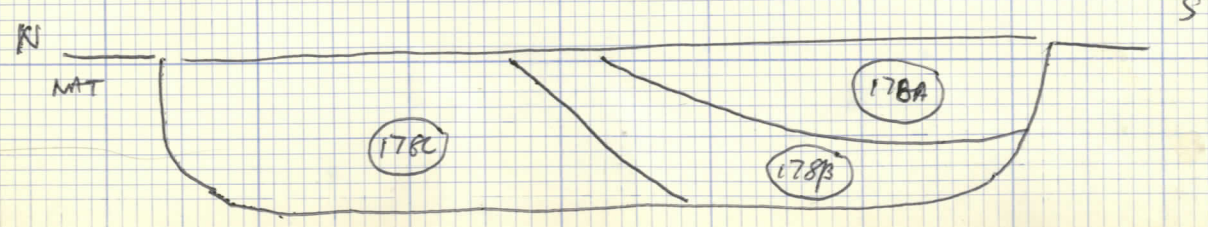


Similar profile N-S

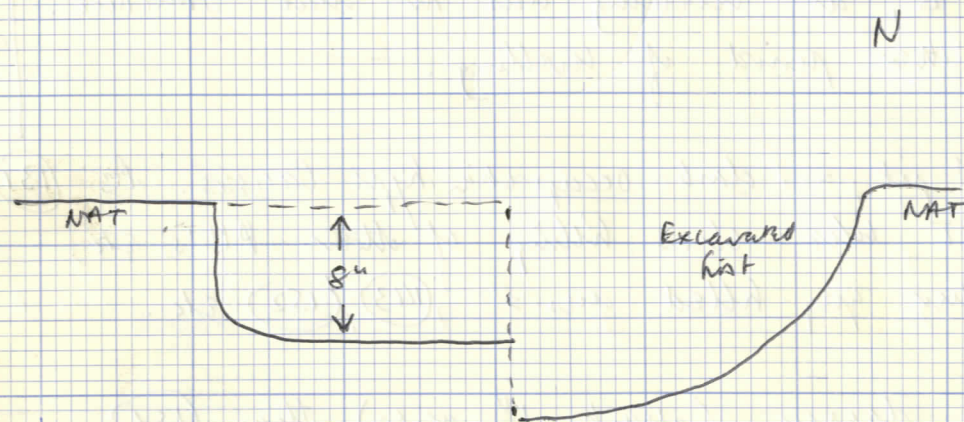
Stratification of (178)



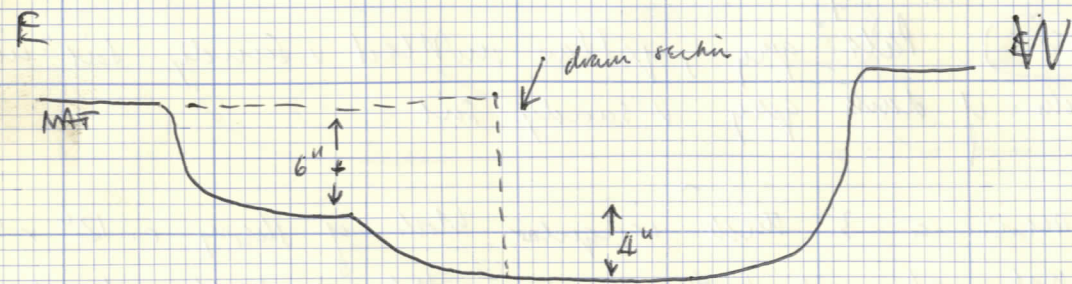
IS THIS A REAR W. EDGE? I SEEK TO REMEMBER IT WAS NEVER VERY CLEAR OR CERTAIN (DUE TO DRY WEATHER WITH SPRAYING)



(136) profile
S



(116) final excavated profile E-W



*

Some notes on removal of retained features
in nat b/s at E end of site, S. of F/S.
To add to appropriate notebooks.

(136) Per flat stone in this is in fact a natural,
with just perhaps $\frac{1}{2}$ " skin of dirty natural below it.
In fact the feature has been overexcavated (depth)
and is only 8" deep. Flanged edges are however
OK - perhaps about 1" too much rounded at sides.

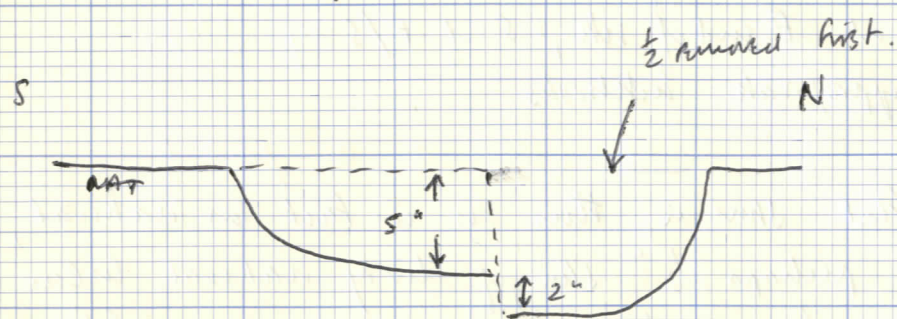
(120) An excavation of the N $\frac{1}{2}$ stratification is as
before in drawn section. There is a possible post in the
NW corner but no distinction seen in stratification
(hot, dry, sunny, but feature wetted thoroughly before
digging). Post indicated only by a deviation in the
top edge, a vertical W. side, and a slight ($\frac{1}{2}$ " deep)
impression in the bottom.

(116) Stratification continued through this section into
E. $\frac{1}{2}$

Primarily there'd been post on W side?
See final excavated profile opposite.

There's also a shallow impression showing E. of
(116) filled with grey sandy soil with yellow lumps
& pecks. Only 2" deep - ? could be survival from higher
level = bottom of PH. Numbered (116A) on plan.

Profile of (118)



(118) - on excavating $S \frac{1}{2}$, the planned shape suggests mis-excavation of the N. part. Also shallower.

(179) Layer no. 149 a drawn section of core (158) / main E. section. Probably already has a stratification number. POT.

* SEE ON New extension of trench upto corrugated iron fence to get core J (58) completely — this was banged out down to clean yellows as had to be done quickly.

(180) POTs from extension. U/S last seemed to be residual in upper levels, over medieval stuff.

(181) Layer no. 246 in main E-section drawing.

SEE ON

DRAWING OF MAIN E. SECTION CONTINUED FROM BOOK 7.

(LAYERS OVER J(158) = OVEN — SHOULD HAVE STRATIFICATION NUMBERS. ALSO CONT. OF SECTION TO N., WHICH SHOULD HAVE STRAT. NOS.)

SECTION NOS.	STRAT. NOS.
123. Black soil = present topsoil	
124. Concrete foundation for decayed post supporting present corrugated iron fence.	
125. White mortar brick wall — originally SE corner of area before extension.	
126. N-S brick wall — joined 125 at 90° — originally formed E limit of excavation. Removed for area (158) extension.	
127. Yellow redeposited material. Fill of CT for 126? or 1971 spread of backfilling?	
128. Mixed sands with not much soil — speckled yellow/brown/grey / + flecks of red clay. CT fill for 126.	
129. Similar 128 but a bit darker + more soil. Spread of white mortar lump separates 128/129 and 129/130 Fill of CT for 126	
130. Similar 129 but bit yellower.	
131. Lumpy black soil. CT fill for 126	
132. Frag of brick + lumps of white mortar. CT fill for 126 Probably over 133.	
133. Mixed sandy silt like 128. Lumpy yellow/grey. Fills of white mortar. Fill of CT for 126	

133. Mixed black soil / red clay / red-brown soil. Fill of CT for 126
134. Mixed sands like 128. Lots yellow-grey. bits of brick + stone. Fill of CT for 126.
135. Sporadic of white mortar upto 1" thick. Base of CT for 126.
136. Heavily brown-brown sand (y) mixed with black soil. Fill of CT for 125
White mortar separates it from 137.
137. Mixed red-brown soil + black soil. Redeposit of stuff to S.
Fill of CT for 125.
138. PIT - filling all black soil with yellow tip-lines.
- (19) pit. Brick rubble + tiles.
139. Odd looking stratification - either 138 is oddly stepped pit, or there is still fill of lower part of CT for 126 surviving here adhering to section - lumps of white mortar in the black soil (not present in 138) suggest this
140. Fine black soil - ~~to~~ old topsoil before brick structure 125/126
141. Silty red brown soil with a few nodules of coal/cl. cl. Tile frags. Some red clay nodules. Brown + silty than underlying layer but dividing line is indistinct.
? Same as underlying layer but leached.
? This + underlying layer = stuff over clay floor of building B
142. Red-brown soil with admixture of red clay nodules/lenses + several large coal nodules. Occasional (medial ungrazed) frags of tile. Few pebbles + small bits of sk.
? This = stuff over clay floor of building B
143. Yellow layer - basically yellow sand from crushed b/s. Admixture of grey sandy + occ. Nodules of coal + red clay.

10

splits into two otherwise indistinguishable deposits at S end with
intermittent of coaly layers.

144. Blackish looking. Lots of small bags of coal in grey sandy soil.
145. Grey to grey-brown sandy soil. Dirty looking. Sparse large pieces
of coal. Occ. pieces of red clay + yellow sand. Few small
sherry bags.
146. Like 145. + probably continuation of it to S.
(Similar but not continuous in section.)
147. Like 145 + probably continuation of it to N.
(Similar but not continuous in section.)
148. Like 145 but greater concentration of coal pieces.
149. Very silty brown sandy soil. Few minute pieces of cl. cl.
Occ. tiny beds of red clay.
150. Yellow sand from nat. b/s.
151. Silty grey-brown ^{visually reddish brown} sandy soil with 1 or 2 pieces of coal and/or
sh. cl. Contains a lot of small bags of sherry (clippings?)
which occur mainly towards the base of the layer and
should probably be treated as a separate layer (152)
152. Bags of sherry (clippings?) in or under 151.
153. Silty grey-brown to brown ~~red~~ sandy soil. Some tiny
pieces of red clay. May be continuation of 151 or 149.
More like 149.
154. Yellow sand mixed with grey sandy.
155. Brown clay mixed with grey sandy soil.
156. Yellow sand mixed with grey sandy soil.
157. Grey to grey-brown sandy soil with occ. coal pieces.
Few tiny bags of sherry + some pieces of red clay.
158. Yellow sand mixed with grey sandy. Most of red clay over it.

N. to N. of red clay
occur in and under
151/152

Small ph. in
natural. Extends
3" to 4" W. of
Fishes. Circular.

- 159. Grey sandy soil
- 160. Tangle of bits of red clay. Also p.l. } cont over 158.
- 161. Yellow sand mixed with grey sandy.
- 162. Dirty grey to grey-brown sand with yellow flecks. P.t.
- 163. Brick wall. Forms S. limit of excavation - see plan.



164. Bits of red clay. ? under w part of 151/152.



- 165. Black soil = mixed topsoil. Build-up against 125 + small brick structure to N.
- 166. Black cindery layers ? + kaolins bits. Against 125 + br. str. to N. - not repeated S of 125 but occurs again N-wards?
- 167. Mixed black soil, bits of clay, various sands. looks black/yellow. Rich of slate. Build up against 125.
- 168. Mixed black soil + red clay. Redeposit. Over CT of 125. May repeat as 169.
- 169. Mixed black soil + red clay. Flecks ch.-d. + yellow s. Cont. of 168?

- 170. Mixed black soil + yellow sand
- 171. Dirty grey-yellow sand. Brick flecks
- 172. Black soil with flecks of grey + brown sand.
- 173. Red-brown soil. Redeposit.
- 174. Black + red-brown soil.
- 175. Red brown soil / clay. Redeposit.

} Fill of
C-T.
NW 125.

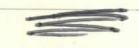


176. Lumps of coal + tiny coal frags mixed with grey sandy soil. Looks black.
177. Small lumps of coal + coal frags mixed with grey sandy soil. Looks black.
178. Probably continuation of 151. Grey sandy soil. This contains small frags of sherry (like 152) and small lumps of red clay (like 164). Does this suggest 151/152/164 are all one deposit?
No coal blocks except towards the top where underlying coal layers have been trampled.
179. Silty greenish-grey sandy soil. Occ. tiny blocks of red clay + yellow sand. One w 2 frags of sh. at top.
180. Light grey sandy soil with a few frags of sh.
No red clay but ? = 178.
?? repeat of 152.
181. Yellow sand with ~~black~~ black soil blocks. Probably original fill of small brick structure 182/183.
- 182 } Small brick walls. Muddled sherd?
183 }
184. Concrete floor with 182/183
185. Black soil. Must be redeposit to occur here. Can't see CT's for 182/183.
186. White mortar spread. Construction wall for 182/183
187. Mixed gritty layer. Dirty grey / brown / yellow sand, same soil, red clay blocks, ch. d. blocks + brick frags.
188. FEATURE. Small pit / ph. Filling silty black soil

* 189 looks grayer than 141.
 Gets progressively a grayer sat
 of brown N-wards.

Could it be 147?
 If so, 184
 would be 177 →
 + 176 would be
 Extra layer.

- including lumps of red clay and pieces of coal.
189. Red-brown sat. Pieces of ch. d. ^{and/or coal} + red clay. Tile
 frags. Sherry. Pieces.
 Probably continuation of 141 rather than 142.
190. FEATURE? Homogeneous silty mid-gray sandy sat with
 occasional pieces of red clay. Few pebbles + sh. frags.
191. Presumed to be continuation of 142. Thin bit looks
 reddish-brown and has red clay bits. Can't see if this
 is over or under 190. Looks as though possibly 191
 cut by 190 but both were exposed as surface +
 sampled over, giving slight spread of 191 also over
 190.
192. Mixed yellow + gray sandy. More gray in than 143 but
 probably cont. of it.
193. Extra layer? Gray sandy with large coal pieces.
194. Looks black. Small frags of coal + 1 large coal lump.
 with some but not much gray sandy sat.
 Is this continuation of 176 or 177?
195. Probably 178 continued. Gray sandy sat with blobs of
 red clay + few small bits of sh. Occ. coal pieces.



196. Frags of brick + white plaster.
197. Black andes + black sat + ? bits of kermae.
 Probably cont. of 166.
198. Mixed many layers. Gray sand + gray sandy sat
 with yellow blobs + blobs of black sat.
 Similar to 167 + possibly cont. of it.



199. Looks black. Coal frags mainly - with some grey sandy soil. Presumed to be 194 continued.



- 200. Mixed black soil & red clay. Brick frags.
- 201. Black soil with blobs of yellow s. + brown sand (y.) Brick frags. Indistinct division between it & 198. Coal frags etc.
- 202. Could this be 191? Funny stratification if so. However - looks redder than 190, but grayer than 191. = Grey sandy soil with red clay. Bricks admixture of brown sandy soil.

202A. Light grey sandy soil with occ. flecks of red clay & wood. 9th mainly the limit of 202A (=202) which is red soil. Can't however divide 202/202A.

→ 202A.



- 203. Looks yellow. Yellow sand & b/s bits with some grey sandy.
- 204. Looks red. Red clay mixed with grey sandy. Coal/ch.d. Bricks.
- 205. Looks yellow. Yellow sand / b/s mixed with grey sandy.
- 206. Looks red. Blobs of red clay mixed with grey sandy. Some white Bricks of ? mortar/plaster.
- 207. Looks yellow. Yellow sand / b/s mixed with grey sandy.
- 208. Looks yellow. Yellow sand / b/s mixed with grey sandy. Could this be continuation of 192?
- 209. Grey sandy soil with some red clay Bricks and a few coal Bricks + a few tiny sh. frags towards the top. Is it 193? Looks most like 147 so possibly = 147 cont.
- 210. Grey sandy soil with few coal Bricks. Slight red clay Bricks + 1 or 2 sh. frags. Probably = 195. cont.

This is largely red clay.



211. Under 197.

Red-brown soil flecked with coal & ash. Admixture of black soil - like layer. Yellow s. pebbles.

212. Red clayey = repeat of 204

213. Clean brown-brown sand to sandy. Probably deposited with 207. Yellow pecking.

214. Grey sandy with blobs of red clay; and coal pecks towards the top. Repeat of 209 or 210?

215. Either appeared trampled not b/s or redeposited.

Looks dirty with two blobs of red clay and one of coal, and few tiny pebbles. Red clay & coal could be in worn / root holes as it's very disturbed by them.

216. Under 213 over 214. Looks much - coal frags largely, with some grey sandy soil.



POST-HOLE nos. 217 - 224 inclusive.

217. Clean yellow sand/b/s. Divided from 218 by lumps of red clay - probably all an deposit.

218. Clean yellow sand/b/s as 217. Redep. natural.

219. Yellow sand/b/s with streaks of dark grey sandy top & bottom.

220. Grey sandy, red clay inlets.

221. Streak of grey-brown sandy. Edge of PH or possibly worn / root. Could be repeat of 220.

222. Yellow sand / b/s with pebbles - like 217/218.

- 223. Darker than material to S.
 Dirty yellow - brown redeposited natural sand with red clay & charcoal. ? could be forest with down from level of 224 with 222 being 224 trampled over. Can't see any difference between 222/224
- 224. Coarse yellow redsp. natural.



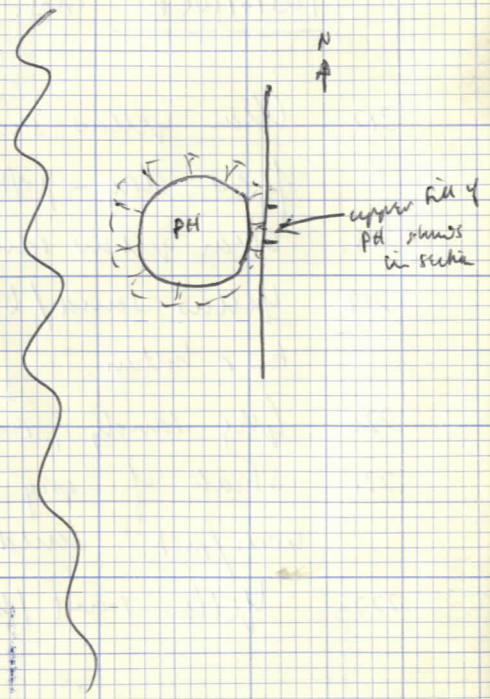
- 225. Mixture of black soil / brown sand / various soils / which rubble = material deposited by us in 1971 when back filling.
- 226. Crushed bricks with mortar etc. Densification rubble.
- 227. White mortar. ? Densification or "flow" surface.

- 228. Black soil. } Feature
 - 229. Black soil with yellow bricks and red clay bricks } Feature
 - 230. Brown soil mixed with black } Like layers as they
 - 231. Black soil mixed with yellow sand } are the foundations of
 - 232. Brown silty with black streaks } brick wall.
- ← 233. Greyish black silty soil - this is fill of PHT remaining in section. Large PHT just out from section.



- 234. Clean yellow redsp. natural sand / crushed bps. Few red clay bricks. Separated from 235 by layer of red clay.
- 235. Similar 234 but with bricks (few) of crumbly grey sand } PHT
- 236. Dark grey / grey brown silty sandy with red clay bricks. } PHT
- 237. Dirty yellow sand = crushed redsp. nat. with slight admixture of grey sandy } PHT

* NB - the area between 233 + 228/229, and for about 9" N. of 233 is indistinct. Looks stained, possibly from 233. Layers should probably be dotted, as not really clear.



thin between 238 + 234
not distinct.

238. Redeposited material. Small lumps of ls could cause yellow sand with faint gray yellow tinge, probably un-staining. This would be layer with ls lumps filling planned hollow W. of section.
-
239. Thin grey-brown sand with yellow streaking.
240. Micaceous - grey sandy with red clay pebbles and yellow ls bits. Coal pebbles towards the top.
Continuation of what layer?
241. Largely red clay, which makes it distinct. However, seems to be blocks of red clay with/in a ~~matrix~~ matrix of light grey sandy. Few small pebbles of coal/ch. cl.
242. Indistinct in relation to layer above + layer to N. - large blocks of coarse yellow sand from crushed rock. Faint greyy streaks. Odd stratification unless there's been a feature here. Doesn't repeat S. of 228/229
243. Doesn't seem repeat of 189 or 202A, though more like 189. Brown-grey to brown sandy soil with occ. coal pebbles. Probably very locally to N.
- 243A. ? repeat of 243, but could be part of 232.
244. Looks black. Largely small lumps of coal and coal fragments with slight admixture of grey to brown sandy soil.
245. Trampled in lumps of red clay. Few coal pebbles (from above?) and admixture of light grey sandy soil probably deriving from underlying layers.

246. Dirty dark greyish to blackish looking layers. Gritty.
Mainly grey sandy soil with admixture of yellow sand/l.s.
light green grey staining. Few small pieces of
coal/ch. cl.

Indistinct division between it and 247.

247. Light grey to greenish grey sandy soil. Few tiny
pieces of coal, ch. cl. (but largely absent in comparison).
Small occasional pieces of red clay or yellow sand.

248. Distinctly brown compared with 247. Grey to brown grey
sandy with tiny pieces of coal.

249. Possibly same as 248. Looks greyer but there's
no clear division. Grey to grey-brown sandy with coal
pieces or occ. small lump of coal.

250. ?? repeat of 246 - more likely repeat of 240.
2 or 3 red clay bits and few bits of l/s in
grey sandy.

251. Redspotted yellow l/s / sand. Some grey sandy
bits. Few small l/s lumps towards the top which
may be continuation of 238.

252. Redspotted yellow l/s mixed with grey or brown
sand + 2 or 3 ch. cl. pieces.

} P.H.

253. Root or SH.
Grey-brown sandy. Yellow bedded.

254. Either dirty weathered surface or red exposed.
Probably a continuation of 252 as division is not clear
though generally 252 looks dirtier.
= Gritty clean-looking waxy yellow-brown sand/l/s.

256 looks yellow when section dries out.
Also has 3 tiny flecks of ch-cl.
Probably it's = 300.

259 does look pinky
when dries. Could
well = 302.

PHOTO { Nos 263 to 266 = post-pit.
much lighter than hill
of silt (removed post).

255. Mixed sort of sample layer — mixed flecks of mid-brown sand
and sticky dark grey sandy — few tiny flecks
of red clay. Similar layer occurs further N.

256. V. similar to 255. Perhaps slightly lighter, plus
few tiny bits of yellow ls.

257. Silted pinky-red clay

258. Under 257 was 259 — lens of pinky-fawn coarse sand.

259. Mixed sort of sample layer looking dark grey =
mixed brown sand & grey sandy with small blobs of dark
grey sticky & tiny flecks of red clay. Few flecks of
chert / or ?? coal. Possible equivalent (not quite
sure) further N.

260. Hard crusty layer — very light grey sand to sandy with
yellow flecks & 2 tiny flecks of red clay.

261. Mixed flecks of grey sandy and yellow sand from ls
with 2 small sh. frags.

262. Redpointed nat with grey sandy bedding & red clay flecks.

263. Like 262 — separated by stratification arrangement and by
streak of red clay.

264. Clean fawn-grey sand. Red clay flecks.

265. Yellow redip. with admixture of fawn sand.

266. Grey-fawn sand

267. Light grey sandy silt.

268. Dark fawn-grey sandy with yellow blobs &
red clay blobs. Looks dirty.

269. Grey-fawn sandy with yellow speckles. Separated

PHOTO { Nos 267 to 270 = socket of with drum post.

from 270 by streak of clean fawn sand.
270. Dark grey - fawn sandy.

This must be the edge of the post pit (S.) judging by stratification.

PHOTO { Nos 271 to 273 = fill of post pit. Cleaner + pattern than socket.

271. Clean pale fawn sand with bits of yellow/lvs and a lump of red clay.
272. Pale grey - fawn sand
273. Like 271.

274. Not quite like any other layers. Darker than 271/2/3 but lighter than socket to N. but darker than p. pit to N. - must be fill of N. post-pit by way of stratification. Fawn sand sparsely bedded with dark grey sand - some yellow streaks, and tiny streaks of red clay.

275. Looks light yellow/grey. = mixed fawn sand, grey sand, yellow sand + lvs. 1 ch. cl. peck and some red clay pecks. Lighter + yellower than layers below.

276. Like 275. Over socket, like 275? or part of socket fill? (i.e. edge would be N. side of 276.)

277. Similar admixture to 275/276 but with more fawn + grey + less yellow.

NOTE ON NOS 263 TO ~~263~~.

Here we appear to have two post-pits, and two post-sockets. Difficult to say which is later and possibly both were in use at once as double post. If so, nos 271/2/3 and S. of that would appear to be the added post — this is suggested by the position of layer 274 which could only be the fill of the N. post-pit.

All this was excavated as one "pit" after removing the stumps / stake-wall trench which cut through it / them.

However, examination of the edges left in natural supports the two post-pits / sockets and the main plan should therefore be amended.

SEE SKETCH PLAN OVER.

Nos. 286 to 290 =
socket of withdrawn post.
Much darker, dirtier,
and grayer than
layers either side.

PHOTO.

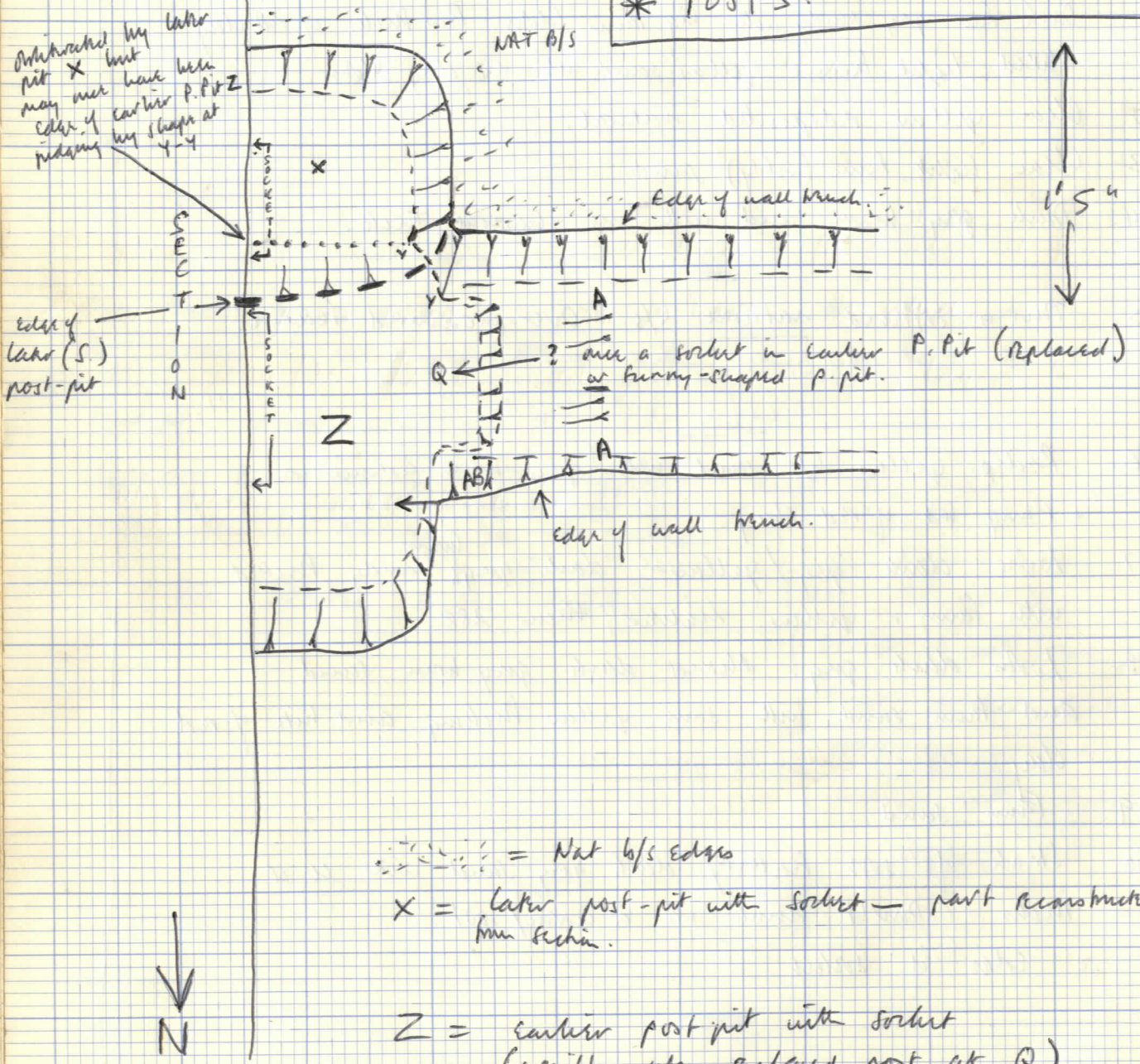
278. Dark grey-brown sand with faun beads.
279. Like 278 but with more yellow, and beads of red clay along the top.
280. Dark brown grey sandy with big faun beads. Few beads of red clay.
281. Mixed light brown + yellow sand with red clay beads.
282. Clean yellow redeposited natural.
283. Clean light brown (silty) sand.
284. Dark grey-brown sand with one charcoal stick.

285. This is soft natural b/s. Over-excavated faun.

286. Redep. yellow b/s sand with grey-brown admixture + 1 tiny bit of red clay.
287. Looks dark grey / yellow = dark grey ^{brown} sandy mixed with faun + yellow. Lighter than 288.
288. Looks dark grey. Mixed dark grey-brown sand and faun sand with some yellow sticking and bits of red clay.
289. Faun sand.
290. Strata of soft heavy dark grey sand with u.c. beads. Don't think it's a worm / root.
= edge of socket.

Plan plan — to amend main plan.

* CERTAINLY <u>TWO</u>	ADD TO
* AND ? THREE	PLAN
* POSTS.	+ NOTES



--- = Nat l/s Edges
 X = later post-pit with socket — part reconstructed from section.
 Z = earlier post-pit with socket (possibly who replaced post at Q)

? is Q with Z or another post-pit.
 AB/AA — may even have been a post-pit here with socket Q — odd deviation / filling noted when removing stone wall branch. Filling yellow/tan + red clay. Don't coincide with wall edge in section — POINT AB IS 6" N. OF WALL EDGE IN SECTION.

A post-pit of wall 2 = 100 level / 100 200

100 level / 100 200

P.T.O

NBS. 291 (292/293) = S. wall of Building A.

What about 294/295? Are there where timber
was removed?

If so, 296 would be built up against timber prior to
striking?

Remember also that 291 is all that's left of original brick —

if so 292/293 could be wh-material. In which
case 294/295/296 would just be underlying layers.

THIS NEEDS THINKING ABOUT.

291. Bits of ls & yellow sand in grey sandy with large lump
of red clay. This is only slightly darker/darker than
286 & could be the same.

However, I think there's an edge and it's part of
wall-brick — might explain some of the difficulties in
excavating the filling thereof.

Does this layer suggest all the stones are wh-material
& not in situ? Not necessarily.

Can't see what's under stones.

292. Slownis — part of the S. wall of Building A.
Then in section look highly-jiggledy + ? wh —
As excavated W. of section they seemed ? in situ
as setting for timber.

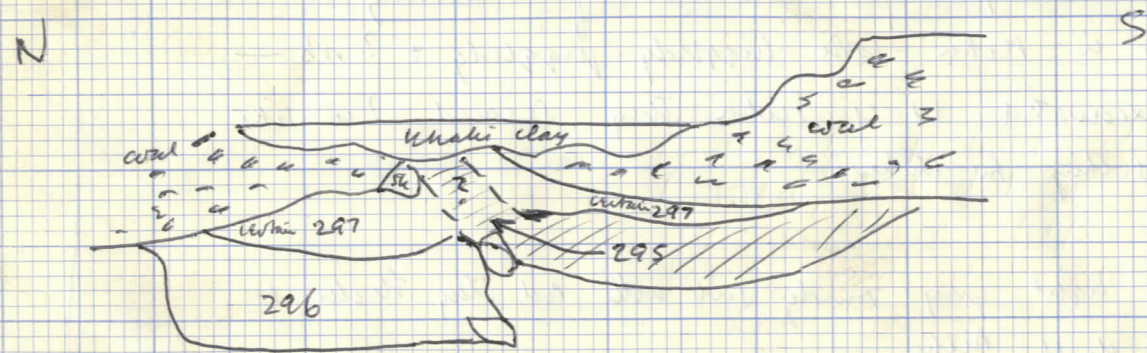
293. Dirty light grey sandy soil with red clay streaks &
1 or 2 ch. cl. pecks.

294. Light grey sandy soil with a few pecks of ch. cl.
Yellow pecking & thin sherry haze. Unlike 293 in that
it has no red clay.

295. Light grey-brown sandy soil with 2 or 3 coal pecks.
Looks pinky due to pecks of red & yellow sand & 1
red clay.

? WHAT IS 296 IN CONTEXT
with No of 292?

NB It is possible 295 cuts up thro' 297 where coal
is broken - thought this at first, then decided not.
If so, 296 would be



This would mean 297 is two layers and
there are two coal deposits.

Layers at this point difficult to distinguish - the
break in coal is obvious, & 297 is two layers.

9 paper sacks as drawn.

296. Definitely different from 294/295. Much darker
and is packed with coal.

Difficult to see lower/least edge between 294/296.
294 may be further N to include all shales 292.

However, 296 certainly also 291/293.

296 = looks dark grey. Mainly a yellow-Reddish
brown-grey sand (y) with admixture (tiny blobs/pebbles)
of dark, shaly, grey sandy silt. 3 or 4 largeish
pieces of red clay. Sparse but clear and large
pieces of coal. Rather silty layer.

297. Rather ~~rich~~ rich brown-organic silt of colour
but not texture. Silty texture. Evenly bedded with
bits of coal. Also coal has a worm/root disturbance.

298. This is most like 255 but not quite the same.

A brownish grey layer - silty brown sand with
pieces of dark grey sand or silt. 2 or 3 pieces
of red clay.

NOT the same as 299 though the brown content
of 298 is similar to 299.

299. Rich brown-coloured sandy silt - clean looking.
Lacks the grey of 298.

300. Hard crusty layer. Looks pale yellow-grey. Paleness
possibly due to faint green clay tinge. Possibly made up

of two indistinguishable layers. light grey below + light yellow above - yellow gone due as to wet trampled grey then with trampled together. Occasional v. tiny pieces of red clay + ch-cl.

This was NOT the redeposited yellow natural (Building A units) but the "re-flowing" as part of the same surface, only occurring in a strip about 1' out from section.

Don't repeat further S. in units 256 - 256 has tiny yellow in.

Ends before N. limit of this E section, but did occur in S side of F/S. Probably ends where 310 ends

304A. Very like 304 but occasional pieces of red clay + a few bits of cherry. Darker + grayer + lacking the pink or tan of 311/312

301. Deposit of shovels.

302. Looks a dark pinky grey - rather like 259 in general appearance.

Mixed bits of grey sandy + brown sand with tiny pieces of red clay and red sand. Occasional ch-cl. Could = 259.

303. Clean bright orange red gritty sand.

304. Dark grey sand (y) Mixed with yellow. Definitely lacks the pinkness of 302.

305. Thin trampled bits of red clay as natural.

306. This is natural - now excavated when examining the area for redeposited natural. This is hard, makes the right noise, + has orange striations.

308A. Slightly darker grey with a few beds of
coarse & bits of stony.

309 forms good surface. Contains few small
beds of slt. - also has a few beds of orange
brown clay - cf. area to South. (J) (158)

312A - probably same as 312 but
difficult to follow when it "thins". Gets thinner
towards N. limit, possibly with some organic
content. Rather loose, soft, "woody".
Under 312A are beds of red clay over
beds of yll w sand (undrainable)
Numbered 334.

307. Rich brown organic material mixed with grey brown
sandy

308. Even mid-brown / grey silty with occasional coal beds.

308A → Greyer & different texture from 298/299.

309. Under 308. Red clay.

310. Under 309 over 300. Composed small rounded lumps
of yellow lts, perhaps lightly stained greenish.
Small amount of yellow/grey sand between shms.

311. Grey-brown sand with reddish tinge. Not continuation of
302 though similar colour - lacks the red clay of 302.

312. Under 303. May be stratigraphical continuation of 311
but lacks the pink. Dark grey-brown sand with faint
faun picking.

312A →

313. This is two layers - a very hard, very dark grey
(almost blackish) silt sample with beds/beds of
red clay along the top - clay may be 305. } ?? dark
grey of 313
over 335 -
may not
extend that
far.
Don't seem to continue over the large PH BUT
there's 3 or 4 red clay beds along the bottom of 304A.
As there also occur higher up in 304A, just can't tell.

314. Yellow reddep. nat. ~~nat.~~

315. Dark grey sand bedded with yellow s. & red clay

316. Clean yellow - I think this must be just soft sand
(weathered) nat., not reddep. 305 may
not
extend
that
far

PH

317. Grey sand bedded with yellow to look greyish yellow.
4 ch. d. beds & 1 of red clay.

318. Yellow reddep. nat.

nos 317 to 325. Post-solent.

Not entirely happy about this solent. All this & post-pit
just look pale yellow-grey.

However, solent side is much softer & more homogeneous —
plus the ch.d., layers 321, and also 319 seem to clinch
the solent. Perhaps also the deposition of layers in the P. pit.

326 to 333 — Post pit

319. Pale yellow but = soft sand mixed with light brown
grey sand. Streak of reddish brown (? clay or sand (y))
along top & bottom.

320. Soft pale yellow grey sand.

321. Possibly partly a root? Dark grey-brown sand.

322. Loose bits of densely packed soft ch.d. — same but
v. little grey sand.

323. Like 320 — seems to be equally mixed soft yellow
& grey sand — looks pale greyish yellow.

324. Yellow l/s. Clean.

325. Like 323.

P.Pit. 326. Yellow l/s, orange lumps — looks like 314.

327. Mixed l/s & grey sand with streaks of red clay.

328. Clean yellow l/s with orangey streaks/lumps.

329. Mixed yellow & grey sand — small dark grey streaks.

330. Similar 329 plus red clay streaks & separated from
329 by clean yellow streak.

331. Clean orangey yellow l/s/sand.

332. Fine yellow sand with dark grey (almost black)
chicky streaks & lumps.

333. Mid-grey to fine grey silty.

334. Pieces of red clay and pieces of yellow sand under 312A.
 Clay may be 305 cut — see also note on 313.
 ? derivation of the yellow !!!

335. Redeposited yellow natural mixed with grey sandy (from underlying stratum.) + 3 small lumps of red clay. Probably wrenched off the natural when this was exposed.

336. Dark grey sand mixed with white/fine sand. Few tiny pieces of ch. cl.

337. Strata of yellow sand. Either this or 335 could account for yellow of 334

338. ? crum. I heard compacted dark greenish grey sand to sandy with pieces of fine sand + tiny red clay. Hard wrenched surface.

339. Dark greenish grey sand (y) mixed + mottled with yellow + fine sand. Looks yellow grey.

340. Very hard + compacted. Very dark grey sandy to silty. Faint fine bedding, plus pieces of red clay + charcoal.

341. Very soft — almost woody. Dark grey to blackish silt/sand — presumably darkened by disintegrated charcoal. Some ch. cl. pieces.

342. ? Stakeholder — fill like 340 plus bits of red clay.

343. Natural.

344. Probably natural — just weathered + dirty.



SEE STRAT. NOTEBOOK OF THIS AREA.

* When excavating I removed 335/343/344/314 as redeposited natural. Section suggests not, though dominantly same if it is. Can't therefore say how this related to my yellow surface. Quite definitely surface was there W. of section, plus redeposited natural was dark grey natural(s) just E. of Red Trunk of Bldg A.

Suppose redeposited, excavated, either
 A — didn't go to section

or B — 335 + 314 were part of it — though not necessarily so. Depends on final interpretation.

344 doesn't seem like the redeposit further W. I think now it is natural, though slightly grey-streaked in and below from poroliths + worms.

345. Looks black.

Loose but densely packed deposit of coal fragments.

Probably slight cinder content. Practically no soil.

has a slightly harder c. 1" deposit along the bottom which is mainly cinder, containing pottery [or deposited over pottery already along the surface of the grey/brown silty layers.]

346. Fairly clean looking whaki-colored clay. Occasional streaks of grey silt.

347. Coal-mixed dark grey sandy silt under 346. Small lumps.

348. Grey to grey brown sandy silt with streaks of red clay and ch. cl.

349. Grey sandy - looks most like 348 so possibly = 348 cont. May however be part of redeposit with underlying disturbance which here could even include part of whaki clay 346.

350. Over 348. Lighter grey sandy silt. Grittier. Red clay streaks + a few of orange burnt clay. Ch. cl. streaks. ?? part of mud dist.

351. Under 350 over 349. Extra layer. Very reddish looking Rd-grey sandy silt. Red clay + ch. cl. streaks. ?? part of mud dist.

352. Reddish sand mixed with red clay. Probably deposited with the shavings or there already.

353. Layer of large + small bits of sherry.

- 354. Possibly simultaneous deposit with 352/353.
Red sand + grey sandy with red clay.
- 355. Red-brown soil with coal flecks, red clay flecks, small bits of sk., and tile frags.
- 356. Red brown soil, similar to 355 but heavier + less red.
Possibly = 355 leached.
- 357. Small reddish bits near 350. Possibly = 352 cont. but maybe with more dist.
- 358. Red-brown soil with a few bits of sk.
Possibly = continuation of 355.
- 359. Pinky clay with some sand. Possibly = continuation of 352.
- 360. Grey-brown sandy - possibly = continuation of 349/348.



Are not all modern layers, as follows...

- 361. Black soil. Possibly 123.
- 362. Stone-drain and trench. This was set in the tarmacadam. As a section here, was dist. by machine.
- 363. Tarmac surface - part of tarmac yard over large area of site.
- 364. Black soil.
- 365. Under 364. White mortar.
- 366. Black soil.
- 367. White mortar.
- 368. Black soil.
- 369. White mortar lumps, tiles, cinders.
Loose deposit.

370. Black soil mixed with red clay.

371. White mortar.

372. Yellow sand.

373. Black soil.

DISURBANCE.

374. Yellow sand (redup nat.) with streaks + flecks of grey to black soil.

375. Mixed black soil + reds/greys - redeposit partly of underlying layers.



376. Black soil

377. Some black soil - mostly loose with rubble + white mortar waste } DIST.



378. Brick Wall. white mortar.

This occurred W. of section but just in section the foundation gets much deeper.

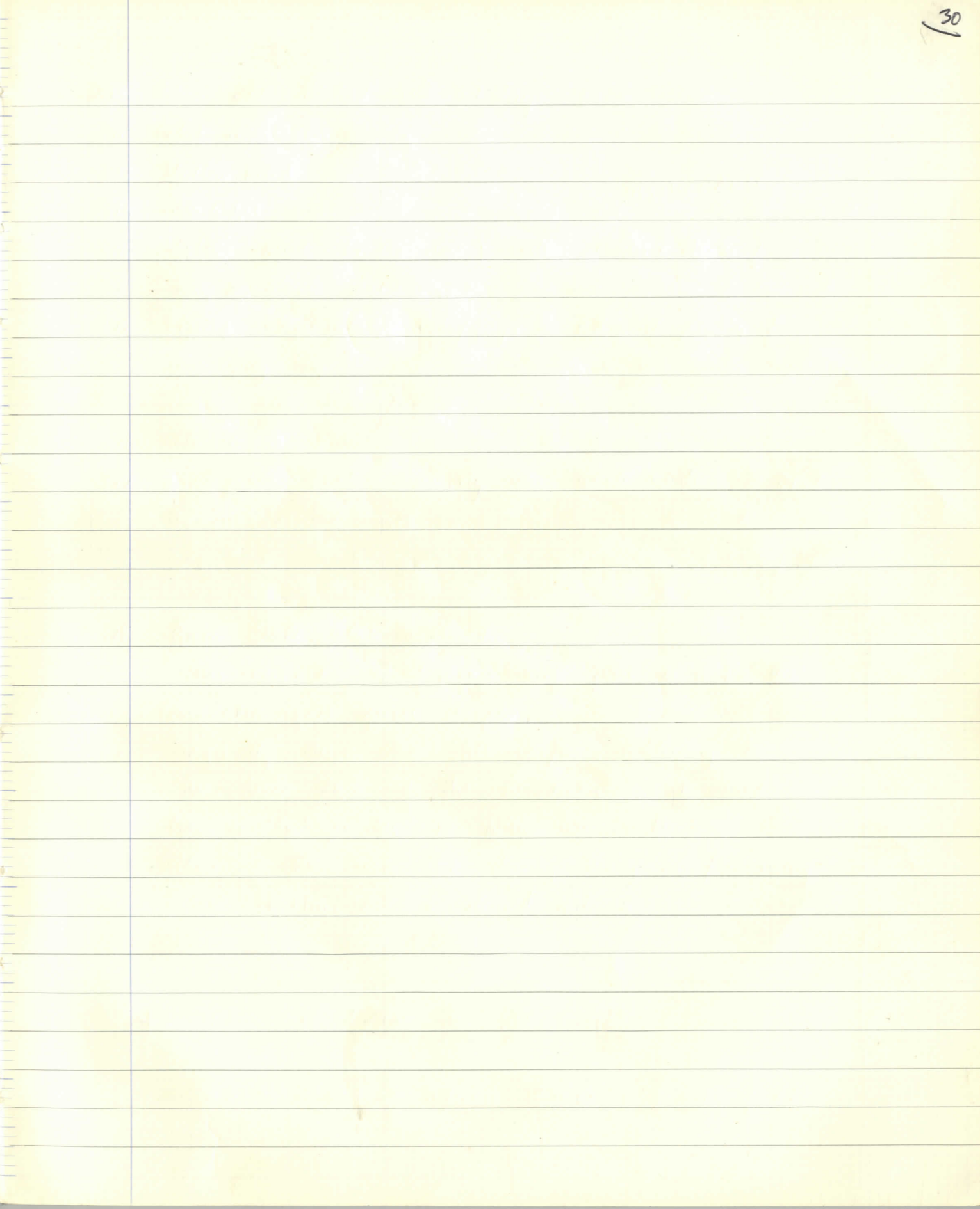
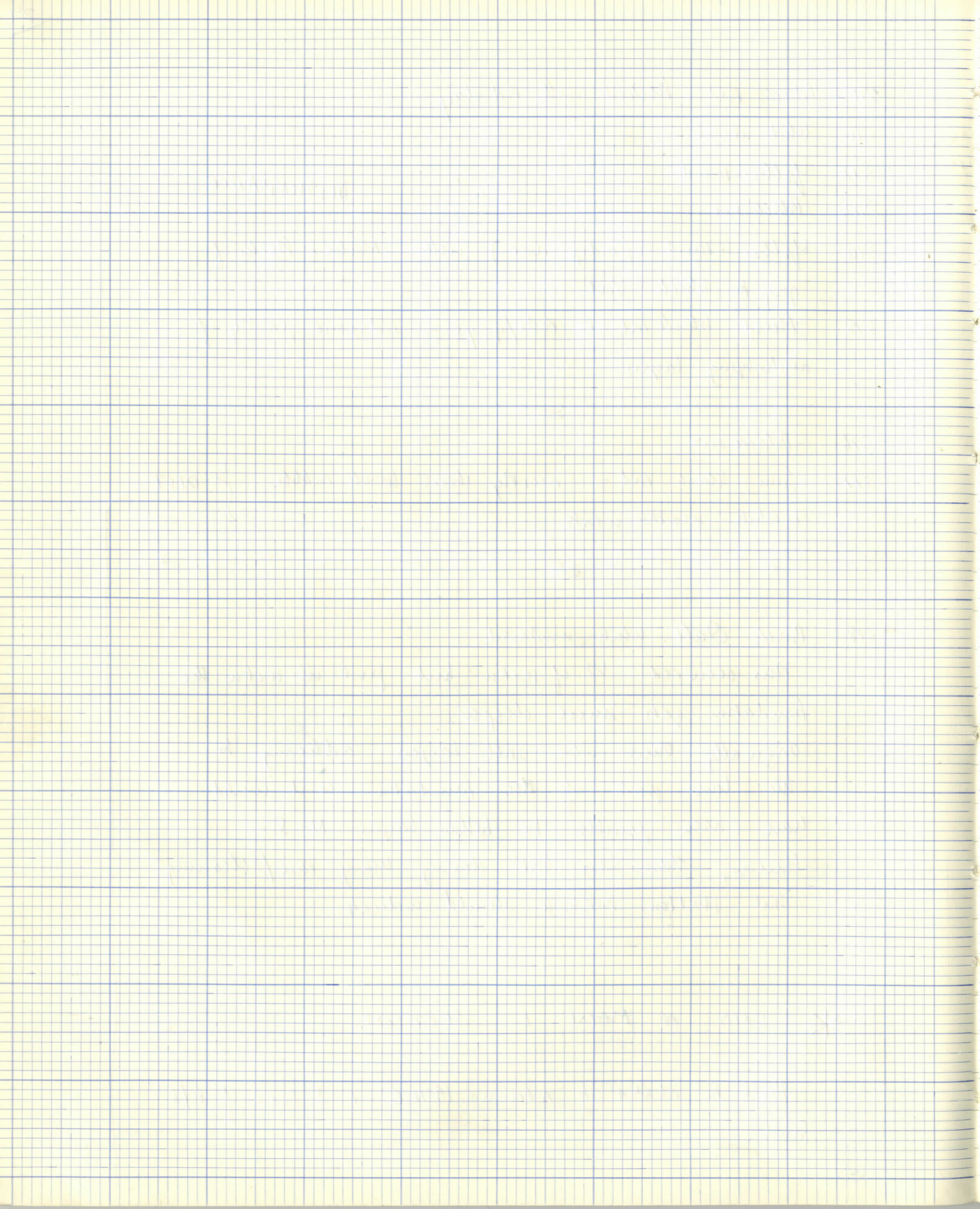
Originally there were still layers adhering to the lower part of the foundation so it would have been possible to follow layers N-S.

However, these were lost during heavy rain/cleaning but skatfen. sketches should indicate.

* END OF MAIN E. SECTION

Has to be related to redrawn 1971 C + S. side of F/S bench.

* The main EAST SECTION may be followed through to MAIN NORTH SECTION via Redrawn section of 1971 bench C, and S. side of F/S bench (drawn by me 1973)



(10)

10/10/10
10/10/10
10/10/10

(11)

10/10/10
10/10/10
10/10/10
10/10/10
10/10/10

(12)

10/10/10
10/10/10
10/10/10
10/10/10
10/10/10
10/10/10
10/10/10

CATER NOTE AFTER DIGGING H(477)

This one compares closely with water and clay one H(477) which had contained green. Could even be similar date. Must have been water & clay mixed like H(477). So I wonder if West of the pit just (west of) was (branches & hazelnuts) etc. having made the water.

OVEN J (158) CONT. (E. 1/2, EXTENSION)

NOTE.

The mound has been extended E-wards to the conjoined iron fence to get the rest of the oven J (158).

All stratification down to yellows level with surface of natural banked out, as time limited and fence may not stay up long. Plan exc. stratigraphically working from drawn section.

(180) U/s pottery from layers down to yellow/natural surface. Contains medieval pottery but this was mostly residual, i.e. didn't occur in the medieval layers.

[no. (181) already used]

(182) Layer no. 52 in section drawing

(183) Layer no. 89 in section drawing

Layers excavated as in drain section. Layers are as appear in section unless mentioned otherwise.

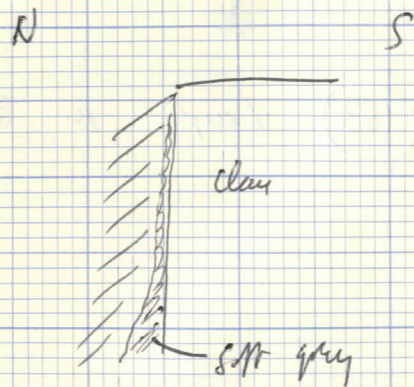
Clay lining 82 looks as though it comes up to socket on E. side, as expected.

79 must be collapsed down, unless it's relining - shouldn't be re-lining as there's no level of burning to go with it - it's new level of 5/81.

79 fills most of bottom of area-pit as far N. as the P.H.'s (photo).

There are lots of stones (sh.) in the Strachan clays. Occurring almost from the top down. Could hardly be structural.

Also lot of stones in the base - difficult to say what level they occur from. All except [one] ^{2 or 3} however are above level of 79 so could not be structural and only dubiously structural debris. Higgledy-piggledy, and only are stones indicative of v. light burning. Some of these stones in section. Must be in-filling after use.



Probably "socket" filling showing right to top of clay lining on E. side 1/2 yrs

Some general notes on over J (158).

How excavated

A. Partly exc. in original trench by JCR when he thought it was two intersecting pits. Examination of the intersection showed relationship of two pits unclear & possibly one below!

B. Trench then extended E-wards by about 1'6" by running brick wall forming original edge of trench. Then trench excavated. This excavation was not well done (JCR) though the results could be deduced CONFINED SPACE since it was clearly an over (only certain when pit shared, by which time much of the clay lining had been removed, particularly that which must have been over the post-pit up to the socket.)

by GY
C. The section was then drawn - from this the trench was interpreted. Points missed in the W $\frac{1}{2}$ were then to be established in the E $\frac{1}{2}$.

D. Finally the trench and GY extended the trench further E, as far as possible to the standing wall and in place. Stratification down to the surface of the natural / yellow surface of the over was brought out. Any trenches at this level were excavated, and then the over itself.

E. The over was excavated using the drawn section. Layers were as in section plus dipping E to W as would be expected. Any stratification differing from section (i.e. occurring E of it only) was noted, otherwise

then wire just was.
as a section.

NB. Before photos of wire / construction the section was
aligned slightly - cut to a straight line N-S as
originally it curved W-wards (!!), and also a matter of
c. 3" to 6" cut to vertical (plumbed).

the section was correct, and checked by excavation.
The only layers quite flattened was those with huds; a sample.
F. This latter excavation was liberally photographed -
at the start, and after ~~run~~ running clay filling of
strut hole etc. to show structural details. Photographs
should show clearly sequence of construction and use.

Photos (plans) (AFTER filling removed)

- (i) clay lining 82 / ch. cl. 81 / clay 77 / ch. cl. 3-4-5
[= clay lining, use, r? collapsed domes]
- (ii) clay lining 82 / ch. cl. 81 / ch. cl. 3-5 (+?4)
[= clay lining + use]

In this, socket of PH at end of clay lining also excavated.

- (iii) with channel removed. Shows clay lining upto
post socket, over post-pit - plus clay sample 1.
- (iv) Clay lining removed - shows yellow fill of post-pit
and yellow silt (weathering 2).
- (v) totally excavated, with burnt rock showing in one pit (flow)

* photos of clay lining at (iii) show it slightly overexcavated
at N end. It is shown vertical with cut the N-ward
spread under 81. This spread was with some thin
a sample and differed slightly from the vertical 82 in
that it had ch. cl. marks and a few flecks of orange
burnt clay. NOWHERE was burnt rock.

CATER
Must have been
with work also
see H(477)
+ JCR's Stakeholes

? Did 9 photos get taken after
use in stakeholes.
Must think so.

In view, the photos show the construction
sequence

- (i) cutting in rock including PH's
- (ii) weathering of Stakehole (yellow redup - unit 2)
- (iii) in section of timber framework / stakes in postholes and filling of postpits with crushed yellow natural
- (iv) clay lining [NOT ON BOTTOM EXCEPT AT S-END] of uen-pit, with clay upto stakes in the postholes - clay over post-pit filling.

This would
be filling the
space behind
water before
damping
with
clay
see
H(477)

Also sample of clay over 2 (= 1 in section)

Also packing behind clay where it can't get
into rock, with yellow/grey sand - specifically in SE + SW
corners and on E-side of uen.

----- the use of the uen

(v) charcoal in stakehole / uen / and ch. cl + (corn) seeds
in uen pit. And lightly burnt rock in uen-pit (Now only,
defined when
in plan)
(? the use of a charcoal brazier).

----- the disuse of the uen

(vi) ? collapsed dome = purple brown lightly burnt
clay mixed with ch. cl. and orange burnt clay -
no. 79 in section. Possibly there was some in filling
before this, as one or 2 sherds (could they
have been structural?) appear to be deposited on
layer 5 before deposition of 79.

The filling of the area with clays / stones / yellow redeposited materials was not photographed separately. Photographs of the section will suffice.

The leveling-off of the area by stripping down to natural b/s to give a level surface for building B was photographed - it all looks yellow redsp. mat. + sat + some red clay w/hrs showing.

See H(477) !!

* Looked in and behind clay for signs of water. None evident. Sample of clay kept to check.

* There's earlier pit on E. side towards S.W. corner. Clay "kinks back" here, due to compression of pit layers.

SOME EXTRA NOTES.

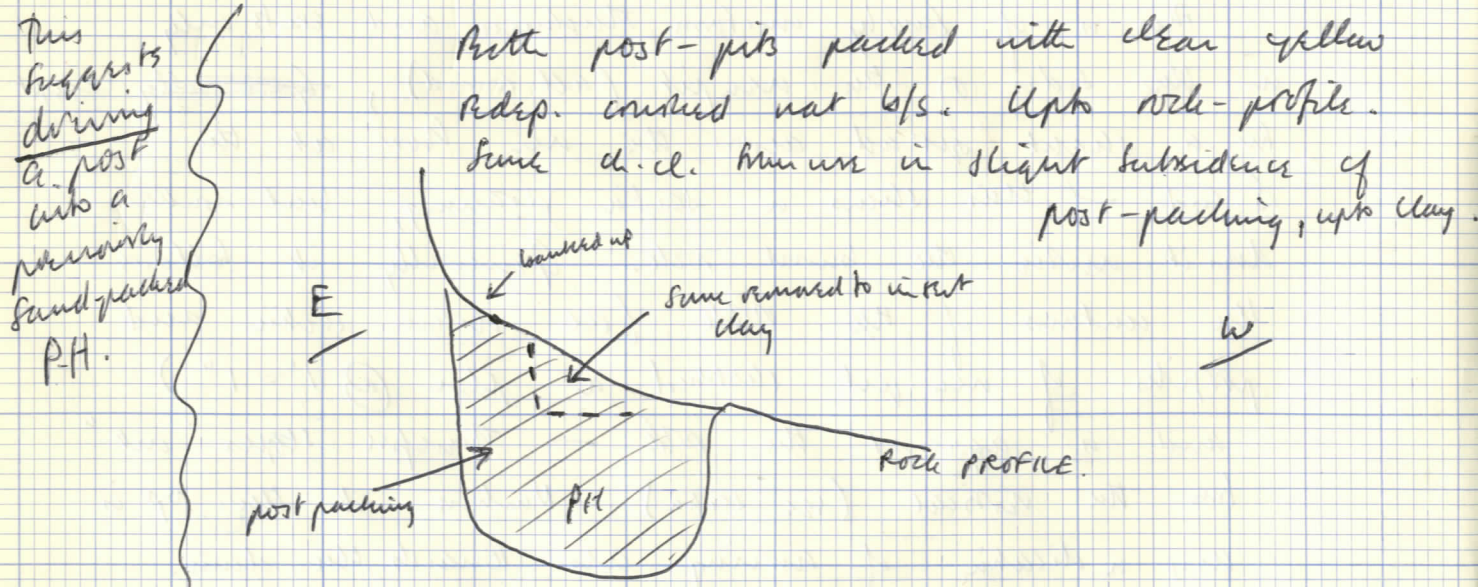
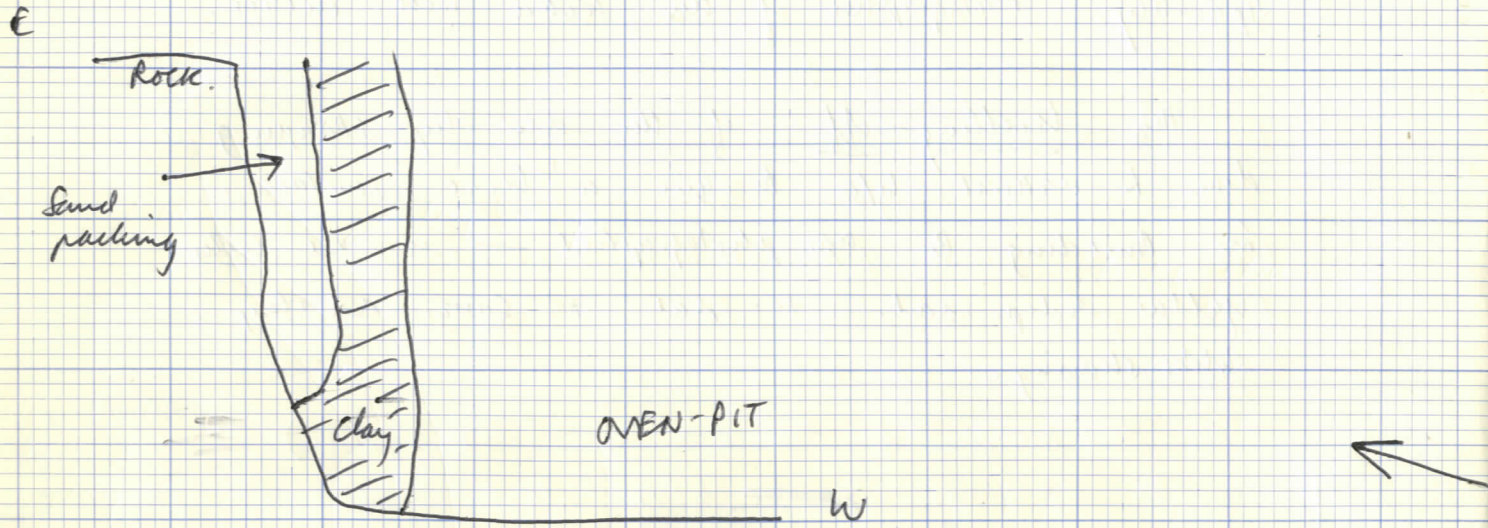
SAMPLE

The clay lining (82 in section).

This is of fairly uniform thickness and exists only on the sides of the well-pit (all round), ~~except~~ except for a slight spread across the area now at the S. end - this shows in section drawing, but nowhere does it touch the burnt rock. Generally it follows the contours of the rock (see down section and profiles of well-pit sketched on plan @ 1"=1") and is against the rock - therefore slopes "out" from the vertical (see section). Nowhere at the top is any indication of curving over towards the dome.

At some points it is not against rock. This because the original cutting is squarish, whereas the lining is nearly circular. Where it does not touch rock the spaces have been filled (presumably

Just S. of this diagram the clay is "club-footed" up to the rock.



This suggests driving a post into a previously sand-packed P.H.

Both post-pits packed with clean yellow redsp. crushed nat lfs. Up to rock-profile. Some d.c. shown in slight subsidence of post-packing, up to clay.

E. side shows some removed again to insert clay.

E socket = grey sand.
W. socket = grey sand w/ decayed wood.

C. 3" to 4" diam. mainly squared saplings in groove in clay.

Post is slightly "squared" angle in clay

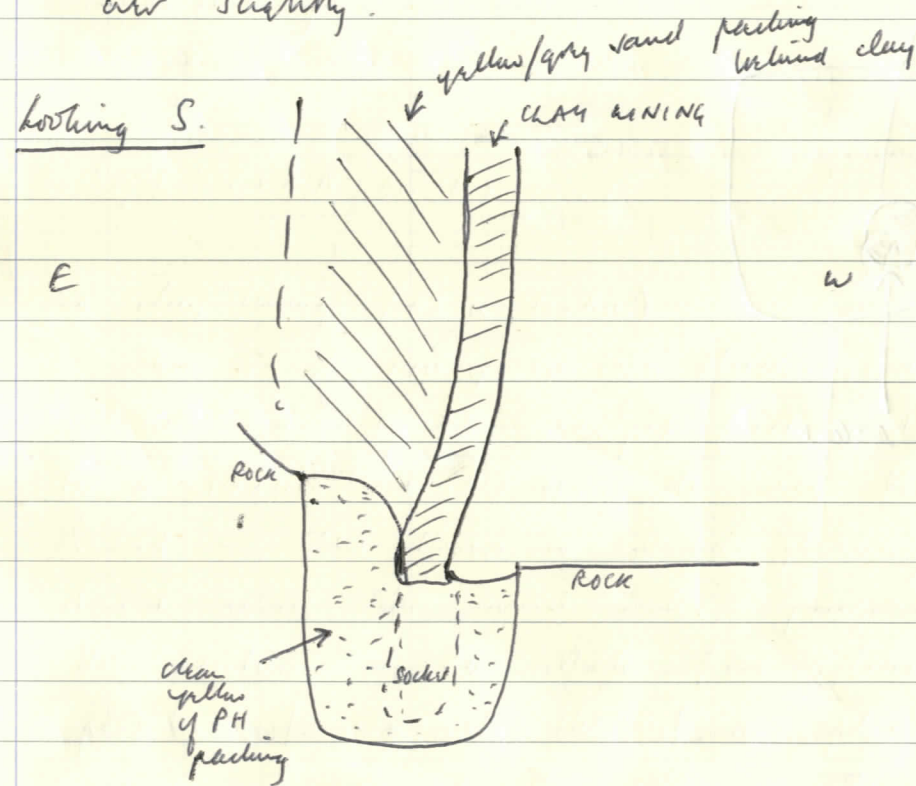
OVEN J (158)

WATTLE!!

ditto. trace bit of p. pits

after lining put in, or when putting the lining in) with cleanish yellow sand with a slight admixture of grey sand to sandy. Noticeable particularly in the SE + SW corners, though some occurs on E+W sides.

Most important perhaps is the arrangement at the base. As the clay approaches the E-side PH it becomes slightly "more vertical" and indeed curves over slightly.

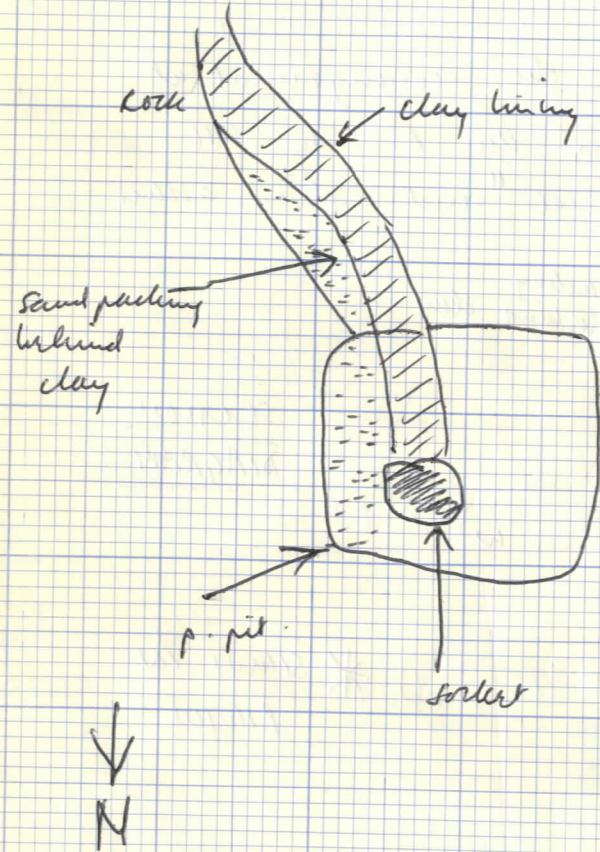


* STAKES IN PHOTOS

NB. socket & clay further E. than this sketch diagram.

The clay arches the post-pit packing up to the stake socket. Socket filled with soft grey sand, not decayed wood. Impression of post shows all the way up the clay lining as a groove - also grey sand filling. Stake, as clay, curving over slightly to W.

? Position of E socket - to check from photos.
 Sketches from memory.

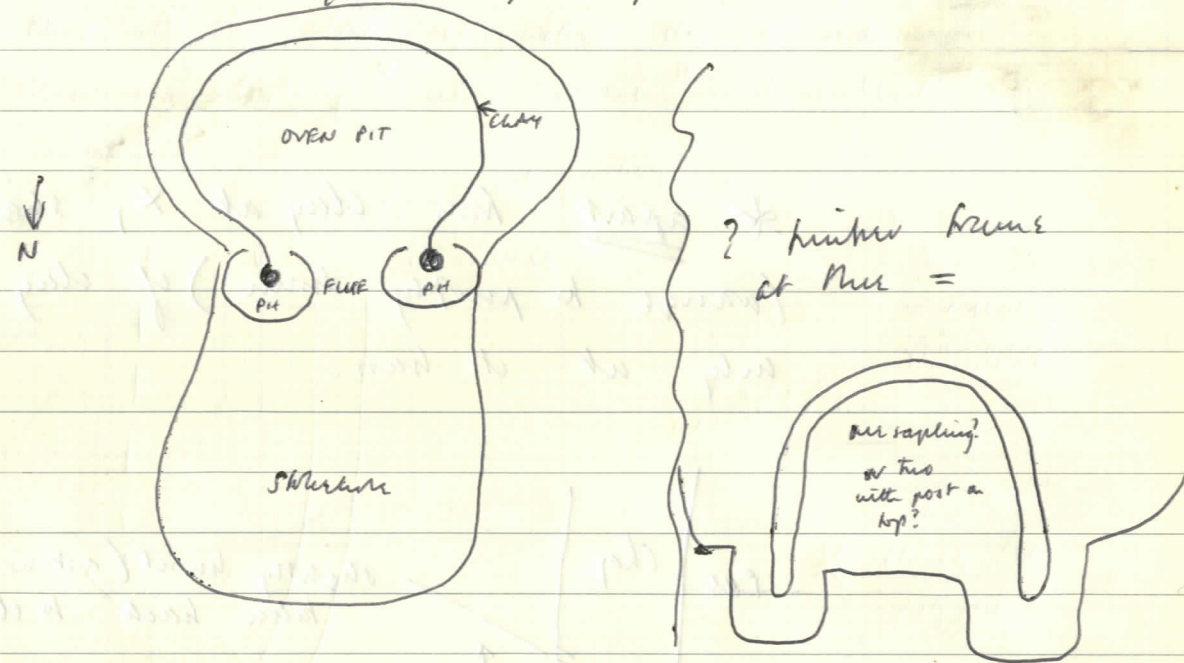


Sketch plan.

OVEN J (158)

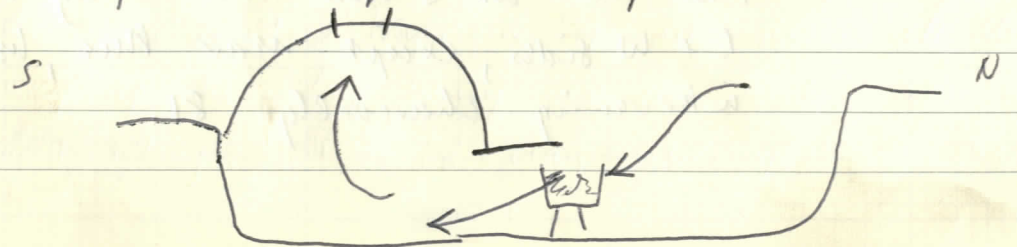
This E socket and clay lining not planned, but can be indicated from photos and notes. Socket on W side planned at 2' = 1" on main plan.

Clay lining only in oven-pit, over posthole packing, up to post sockets. Girds only very short ones



NOT fired clay w even burnt clay.

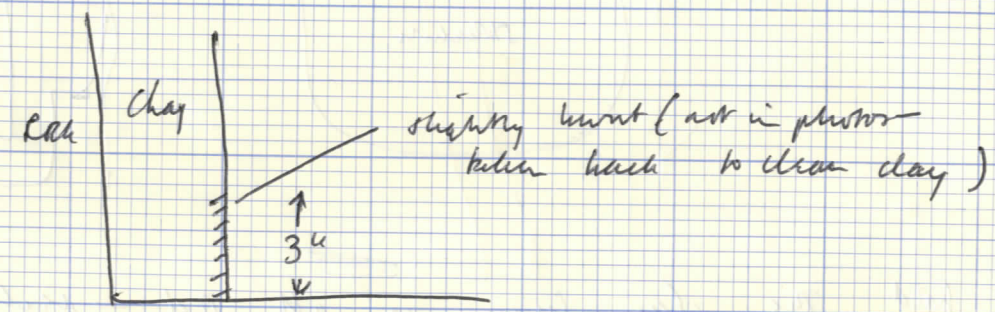
The clay lining is all red - perhaps slightly dull red, but shows (xpractically no) sign of heat. Shows greatly baked only, suggesting parching of corn = 25mins or so. Very little ash - big charcoal in this - ? shows brazier. Some kind of arrangement to carry heat into oven-pit (slightly down draught?) to give burnt rock.



Referred by no ash and hardly any ch.d. in oven-pit when oven is burnt. Charcoal material in oven-pit is mainly "disorder" ch.d. + sand, occ. frags, + corn-seeds. Pellets from oven rather than in site burning.

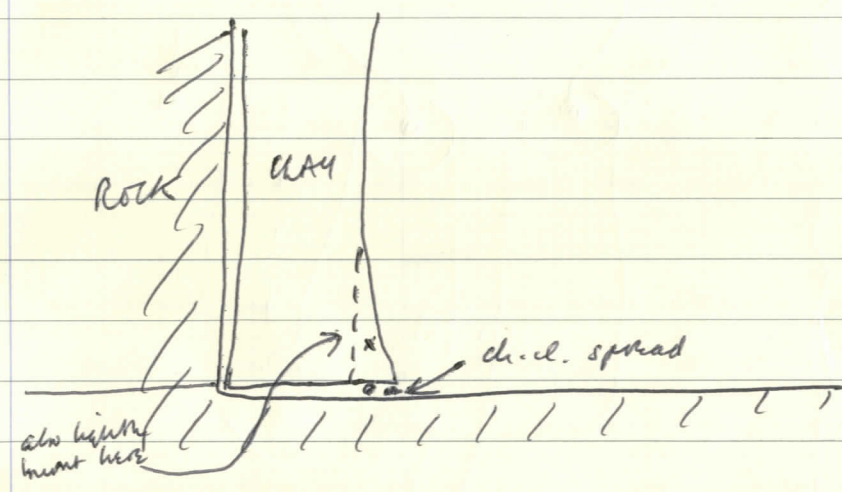
On first examination, clay lining appeared to be new ch.d. at oven bottom.

* apart from clay at X, slight burning (wange to purple brown) of clay lining only at its base.



* This burnt bit could all be 79.

Occurring only where clay is slightly arched and ∴ = 79 not fully rounded — clumps followed vertical edges mainly, + 79 distinct from 82 at S end and along most of E + W sides, except near base, because of intervening charcoally 81.



This clay at X burned before plots of clay lining. X occurred mainly towards base — probably 79 not fully rounded but originally as clay slightly arched over, whereas vertical elsewhere.

Thought this lining might be secondary (re-use). However, examination of clay at X showed it to be slightly different — more burnt with wange tracks. Probably this clay / ch.d. part of collapsed dome? 79?

Only sign of burning on lining = slight orange melting at the bottom. Difficult to distinguish on E. side of oven from 79 where 81 doesn't exist, i.e. E. side of base.

* Probably clay lining is primary.

Presumably, as it's burnt, clay 79 is collapsed
down. Can't be shining as it's now being charred
3/5.

NOT
STONE

Some of the loose stone in the three ?? suggests
partly stone ashway. Or timber only? Or
combination timber/stone? Stone possibly just
infilling, as only 1 shows any signs of burning.

Difficult to say about stones, as they largely
occur throughout the ^{infilling} clays of the structure. So
most, if not all, must be infilling.

The infilling is odd — no obvious reason for
mostly clays in structure, mostly red. none in
one pit. Structure clays show no indication of
being a-run of run — as charcoal layers occur
above the level of 5. And grey silt in
structure suggest period of abandonment before
infilling with clays/rocks.

The steps to the structure at the N end
are not clearly defined. ? worn / eroded. Natural
here is very soft. Two steps only possibly distinct.

The rock in the one pit is only lightly
burnt (how only) and, as plain, is quite a
distinctly limited area. Burnt blackish generally, →

OVEN J (158)

purplish → pinkish brown at edges. Up to 1" thick cen. centrally.

SAMPLE OF MURNT ROCK TAKEN.



NB. Lots of (com) seeds in sl. ?? any in 3/5/4



OVEN J (158)

As G4 is away and don't know how far we got with (158) + suffix sequence (we had that whole) layers in E 1/2 with finds etc. numbered as follows... (NOT IN SEQUENCE)

STRATIF. NOS.

ALL EAST HALF. OTHER NOS. IN W. HALF.

(184)

SAMPLE - burnt rock in bottom of oven

(185)

Layer 3 in section. Finds of the nearby complete pit. Don't already have a (158) + suffix number.

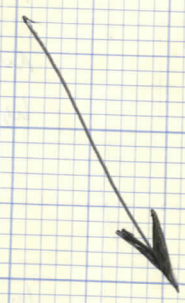
Also ~~etc~~ kept a sample - to check for seeds + to get charcoal from it.

(185x)

SEE OPPOSITE.

ADD (185x)

Number given to shard found in spot from digging the oven. May belong to same splashed-wave jug.



(186) Layer 81 in section.
Kept to go thro' for seeds. And as SAMPLE.
Will be num numbered (158) + suffix from W. 1/2.

(187) Layer 82 in section = CLAY LINING.
SAMPLE — to check
 (a) for water
 (b) for burning
 } Also contains a PIONE FRAG.

(188) Layer 37 in section.
Average shed.

(189) Layer 79 in section.
Probably burnt clay = ? collapsed dome.
Kept as SAMPLE to check (a) burning
 (b) water.
 (c) cf. (187)

(190) Layer 4 in section. Base + pot.

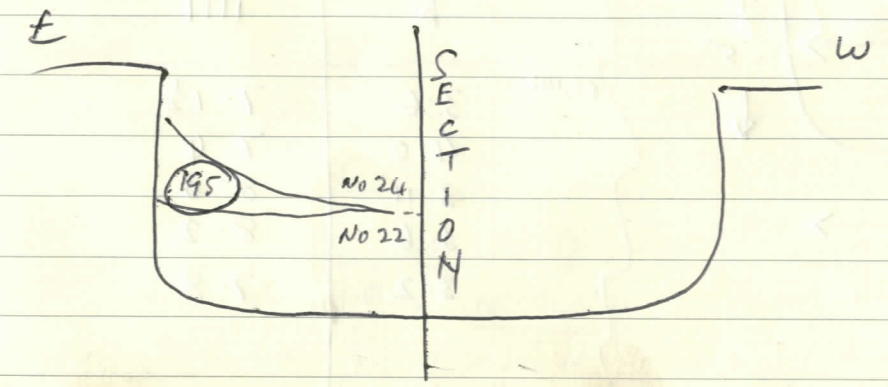
(191) Layer 8 in section. POT.

(192) Layer 10 in section. POT.

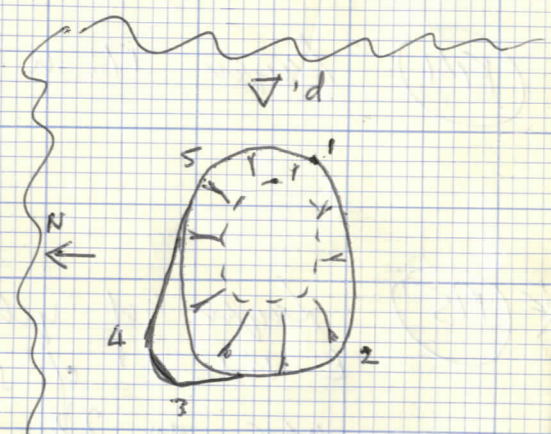
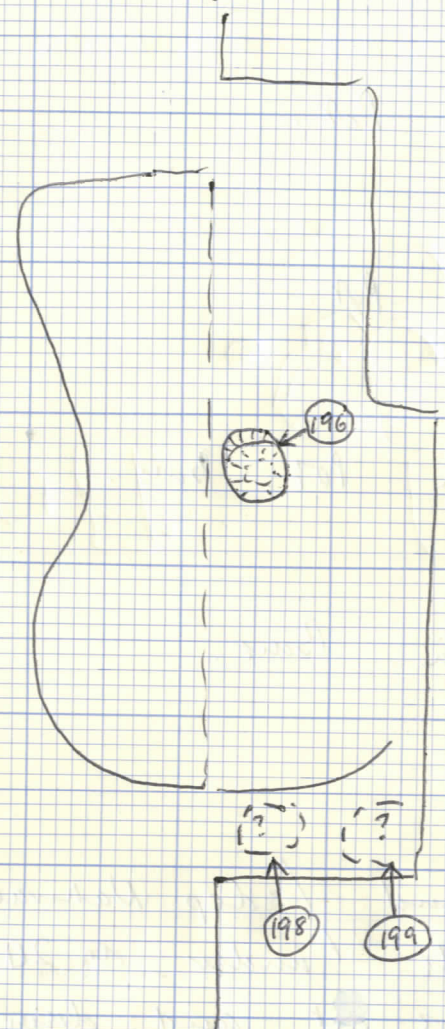
(193) Layer 13 in section. POT. Base.

(194) Layer 17 in section. Base.

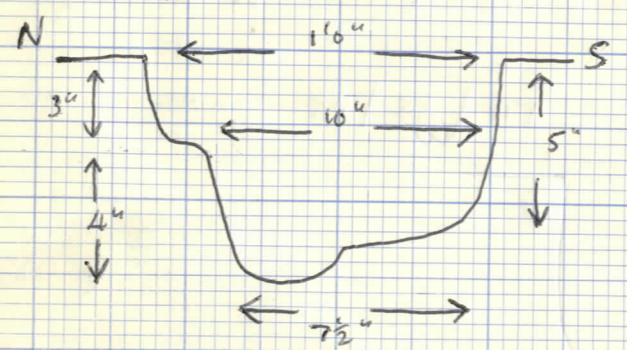
* (195) Layer of yellow sand / sdep. Natural on E side of stratum under no 24 in section over no 22. Picks out and don't show in section. POT.



Sketch-plan of (196)



Profile of (196)



(196) 'd' NOT ON PLAN YET

b	
3.6	7-1 1/2
4.0	7-4
3.11	8-0
3.6	8-2
3.2	7-8

* TO GET —

Any notes from GY.

GY'S ∇ of PH'S

GY'S ∇ of offsetting nails.

No. of ∇ 's to give to GY'S PH when planned — 1 Envelope to number.

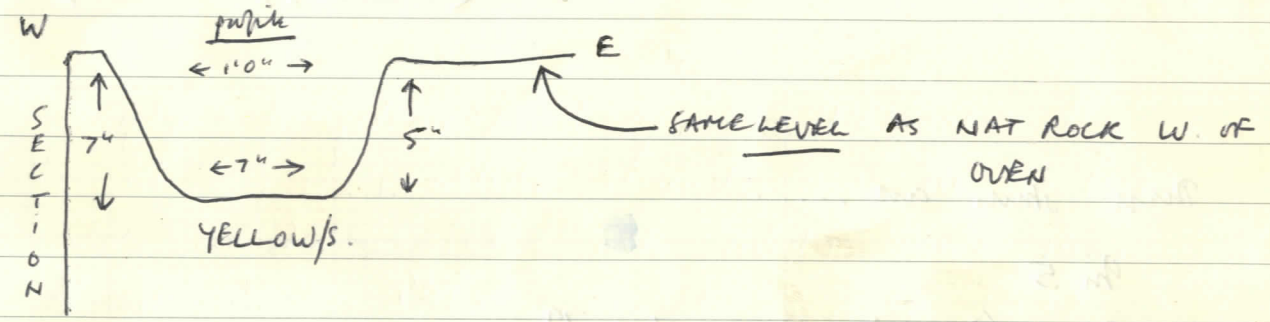
Can't find 3/5/11/18/24

OVEN J (158) CONT. (from GY)

(196) PESTHOLE

NOT ON PLAN YET

Under (180) in top yellow fill of oven. { Stump hardware

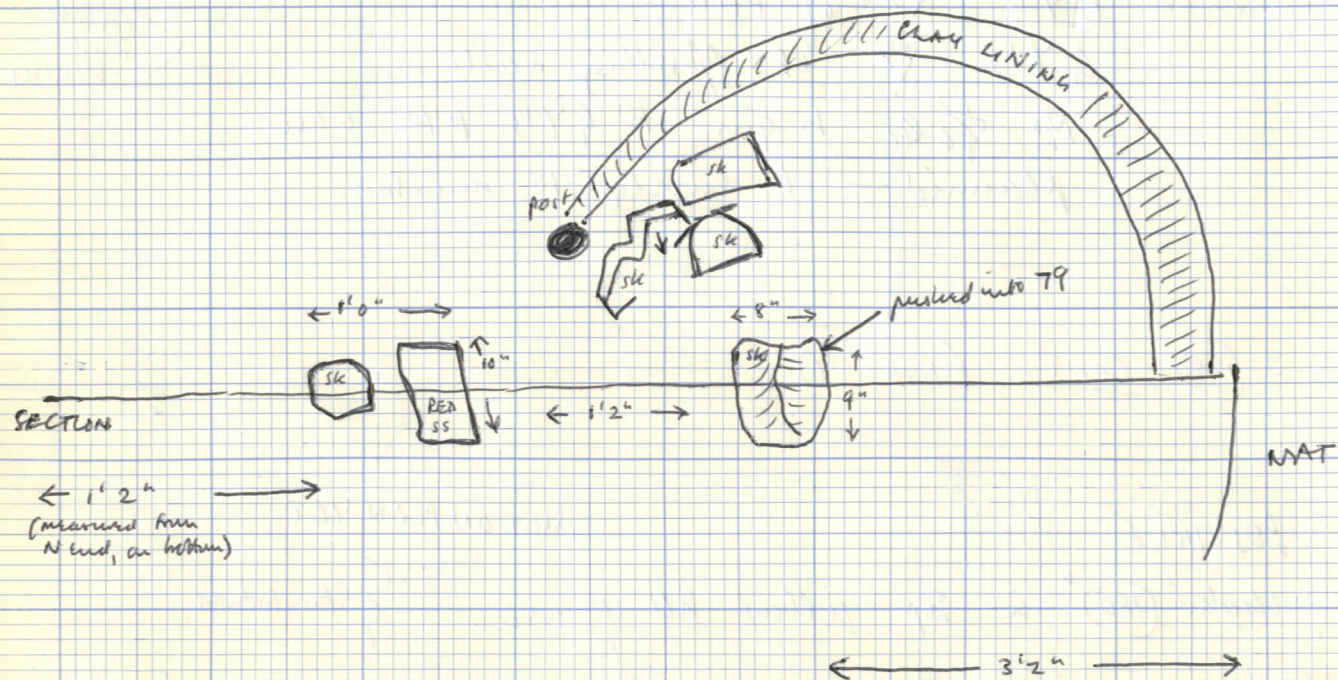


Filling — greeny-grey to grey brown sandy (soil?) with a lot of small (egg-sized) lumps of sherry. Charcoal sticks.

NB. * There was a similar PH, similar shape, due W. of this, in section, before trench cut back (under brick wall). Mentioned previously. Also not on plan yet.

RVS. ARE SECTION NOS.

N ←



Push stumps out ----

9m 5

9m 79 (? under) + showing above 79

9m 20

Under 24 / 32 / 117

(197) Skevies in area filling.

See sketch opposite.

Probably filling, not structural debris

There were also 2 ? ph's just S. of area where Gordon didn't think were anything. Deposition with light brown v. sandy soil, plus a number of SK's. Sketched on previous page.

(199) ??? PH, as mentioned above —

probably just fill of subsidence in underlying pit.

(198) ? PH, as mentioned above.

Probably something from higher level.

Leaves only 2" depression in nat l/s.

The fill of (198) + (199) was a light brown sandy layer or natural which is fact filled this whole area S. of oven, where natural dips W to E.

Details of later features in area extension
etc. Not recorded or numbered — where
necessary, indicated on plan at 1" = 1' or
will appear in area section.

47
200 See plan of area at 1" = 1'.

Pit cut through by area in S.E. corner of
extension. Indicated on plan but unexcavated.

Filling — pale brown + pale grey sands. Top sealed
by whitish looking redeposited rot b/s.

END OF OVEN

5

201 Layer no. 300 in drawing of main E. section.
Residual Saxon/IA pit removed after
drawing.

202 Layer no. 345 (just under = on surface before 345
deposited) in main E. section drawing.

There is a CR note of this pit already with
stratigraphic nos.

J

(203) Layer No. 238 on main NORTH section drawing.
Sand came from "low" white cleaning section,
but GY was fairly sure it was here, and
"definitely" in DITCH.

J (204) Layer no. 272 on main NORTH section drawing.
Laksh pit (? date) so possible residual if there's
a disparity with other finds.
? Laksh (13) + pit.

J (205) Main NORTH section.
Pot rim (spl. w?)
Precin deviation uncertain, but from cutting back
section in area of G444Y and GY thought
from group involving gully, pretty certainly.
Fairly safe to say it's from nos. 139/140/141/143/144
group of gyps.
Certainly below OVEN and high up IN or OVER
gully.

Faint handwritten notes at the top of the page, possibly including the word 'Liquor'.

Handwritten notes in the upper middle section, appearing to be a list or series of observations.

Handwritten notes in the middle section, continuing the list or observations.

Handwritten notes in the lower middle section, possibly including a date or specific reference.

Faint handwritten notes at the bottom of the page.

Faint handwritten notes in the upper middle section of the grid page.

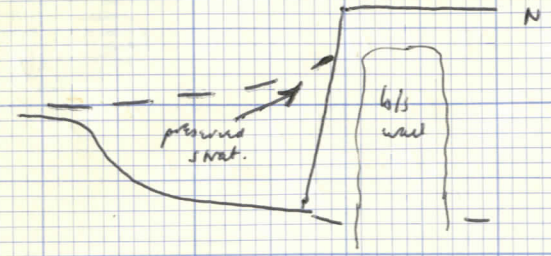
Handwritten notes in the middle section of the grid page, including some circled words.

Handwritten notes in the lower middle section of the grid page.

Faint handwritten notes at the bottom of the grid page.

* GENERAL NOTE ON N. SECTION -

The stratification here is much better preserved than elsewhere. Due to (a) subsidence in to ditch (b) protection from l/s wall



Many layers etc. appear in this section which did not survive elsewhere. Removed by cutting back section, not by area excavation.

NOS 2 to 5

probably all later than destruction of B/S wall - though possibly there are offset to the wall N of section, in which case some of them could be against the wall.

MAIN NORTH SECTION

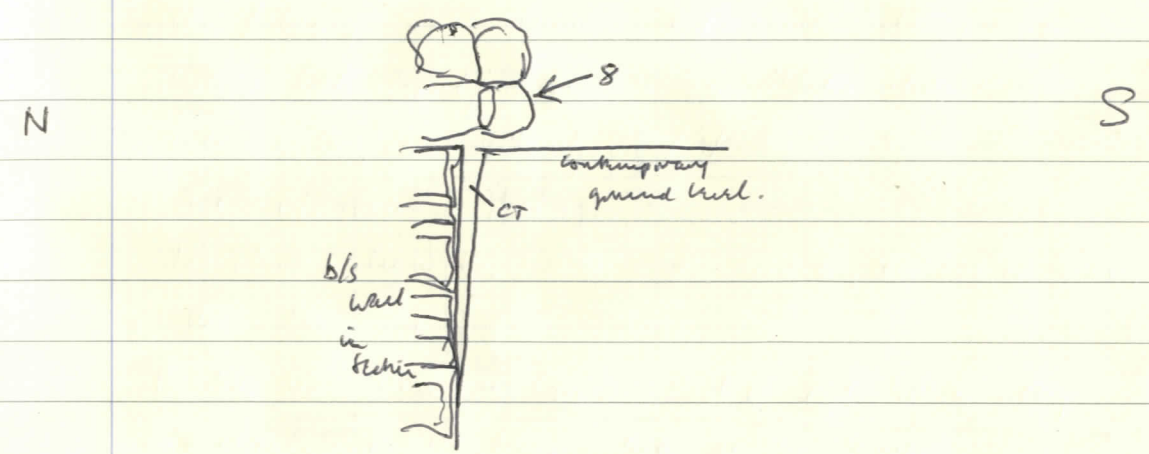
STRATIFICATION NUMBER

SECTION NOS. ONLY

1. Black soil, with flags etc. Machine deposit during 1973 stripping
 2. Silty / clayey dark brown to red-brown soil. Evenly flecked with coal/ch. cl. - also flecks white mortar. Tile frags, occ. bits of sh./l/s. Post B/S wall destruction. No clear distinction between it and 3, tho' one is brown, the other red.
 3. Possibly more than one layer. Red to red-brown clay to clayey silt. Tile frags, white mortar lumps. 3A. Separate layer or just hp-line? Tile frags, bits of sh., lumps of white mortar, red clay.
 4. Yellow-brown to yellow grey = mixture of yellow sand, grey silt, whaki clay (cy). Some sh. frags & coal flecks. Few flecks of l/s + red clay.
 5. Looks dark red-grey = grey sandy soil flecked with reddish orange sand. Few sh. frags & coal flecks.
-
6. Sh. frags in red clay. Not distinct from underlying layer except for 7.
 7. Lumps of white mortar in red clay.

8. Large blocks of B/S out in red clay 9 (probably together with 9).

This is either part of the B/S wall or destruction debris from it. If part of wall it must have spread above its contemporary ground level as there occurred further S than the rest of the wall. See sketch below.



9. Sandy red clay. Some white mortar bricks. Getting for 8.

10. Silty red brown soil. Part of a?

11. On E face of column 1971C — like 10 but with bricks + bits of yellow B/S.

12. Reddish grey silty with some red clay + bits of s/c + G/S

13. Red clay + white mortar bricks. must be just a patch in the brickish clay.

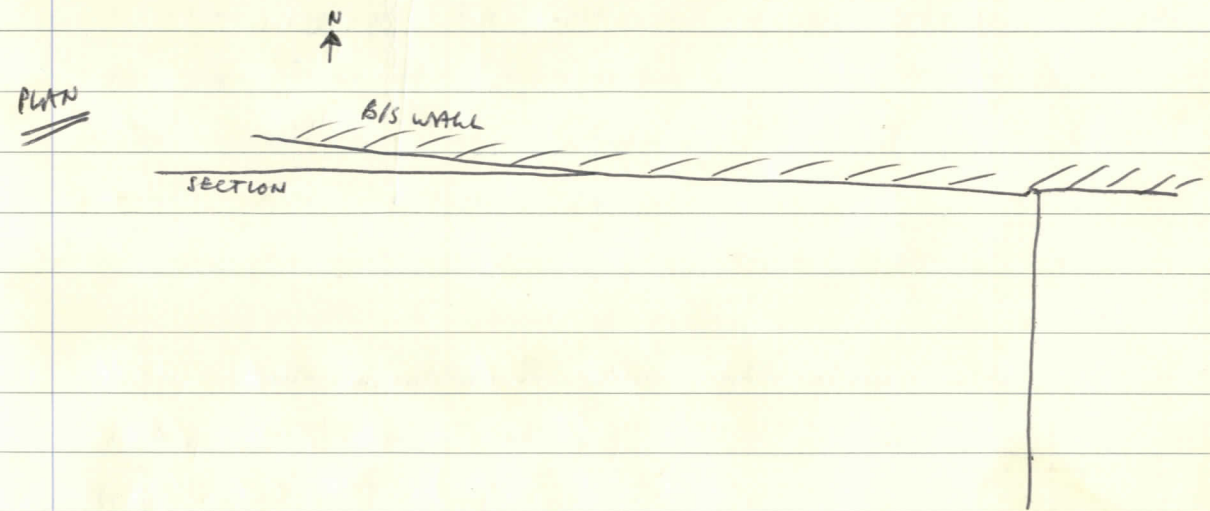
14. E face 1971C — Red / yellow silty with red clay bricks.

15. E face 1971C — silty red clayey bricked with yellow

sand. white mortar. Mels. part of 13?

- 16. Dark grey sand Mels with yellow sand, red clay, & charcoal. Also in E face 1971 C
- 17. E face 1971 C - yellow/grey sandy Mels with red clay. This stops at a stone in N section but is not "cut" by wall - part of CT.
 All layers under 17 in E face '71 C are cut by B/S wall bench.

18. THE BRUNTER SANDSTONE WALL.
 Part in continuation of wall E-W all across site.
 Either this is linking the section diagonally...



or there is a (typical) bulge in its construction here.

= large blocks of B/S (not found so below its contemporary ground level.), same story. Also Mels, of which several occur vertically packing the side of the C.T.

* I think there's a N-S trench just E. of the excavated area where B/S wall has been removed. So probably a corner was with a N-S length to join up with the B/S wall observable below and below brick foundations in the low-level carpark.

This time ATYPICALLY banded with a silty, sickly colored **dirty** khaki/light brown clay.

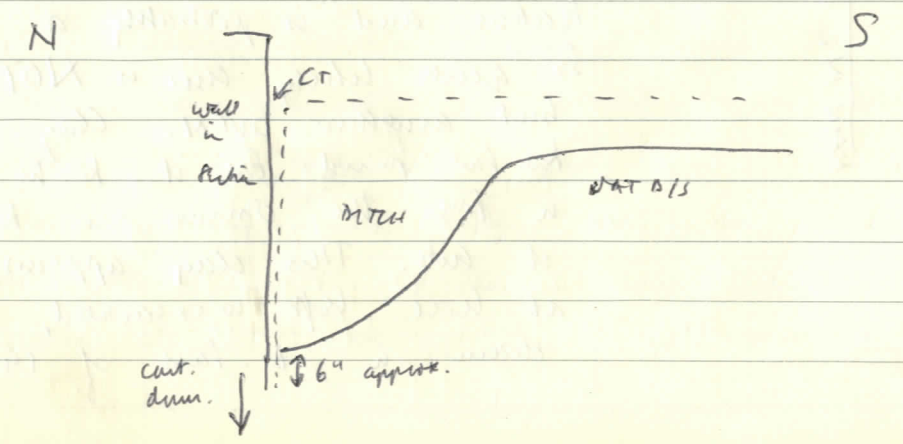
This clay is suggestive as follows...

- ① Khaki clay was used in main E section probably ^{the wall's} construction level.
- ② Main fire B/S wall built from level of coal.
- ③ Building A abandoned through coal, so probably Building A abandoned to construct B/S wall.

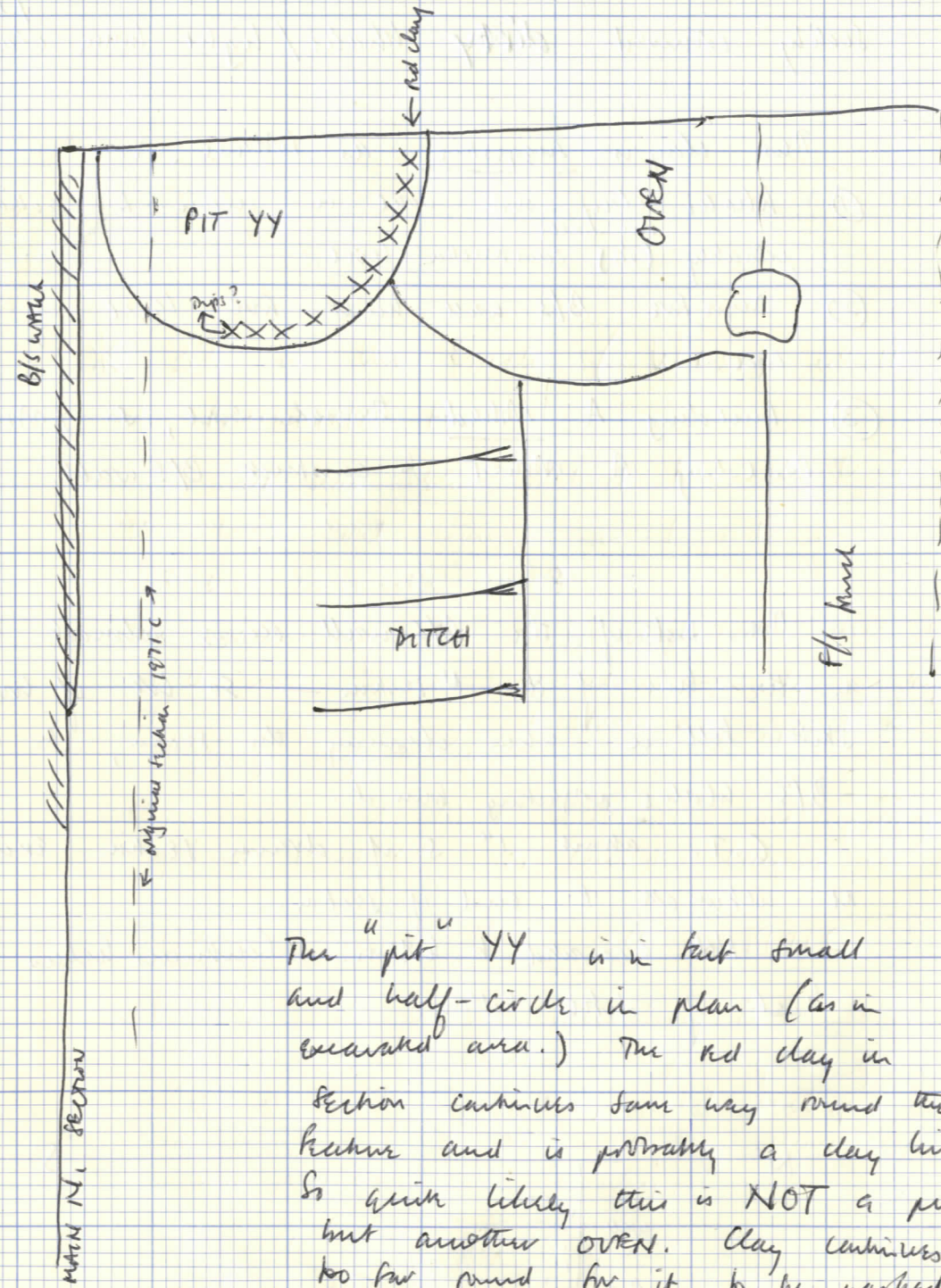
The side of the B/S wall occurs almost exactly on the line of the N section - so lot of loose silt fell in when cleaning the section, to leave B/S holes projecting from it.

C-T. about 1" S. of drawn section except at alternate E. end of section.

Not excavated to bottom. Continues below level of ditch bottom.



EXTRA NOTE WITH REFERENCE TO E. FACE OF
1971C



The "pit" YY is in fact small and half-circle in plan (as in excavated area.) The red clay in section continues same way round the feature and is probably a clay lining. So quite likely this is NOT a pit, but another oven. Clay continues too far round for it to be washed in from the omnium oven to S, which it cuts. This clay appears only at level left unexcavated, except where E drawn in E-face of 1971C.

19. E face 1971 C —
Several lumps here but all clean pale brown/grey/
brown sands of DITCH FILL.

ROBBER TRENCH

- 20. Bits of sherry in reddish orange sand. Small lumps/lumps of khaki clay. } of the khaki clay of 18- similar stuff.
- 21. like 20 but redder. Hardly any khaki clay, less sh's. Probably same layer as 20.
- 22. lump of khaki-brown clay. Cont. of 23?
- 23. Khaki-brown clay. Sh's. - few ch.-cl. pebbles.
- 24. like 20/21. Only separated by 22/23.
- 25. Red-orange sand. Probably cont. of 24 (w 27)
- 26. Khaki brown clay - stuff like 18 with slight admixture of grey sandy.

* The disposition of 25/26 in relation to 18 indicates nothing the sherry wall to build the B/S wall. Stuff straight from one trench into another.

- 27. Just like 24. Only separated by 26. Contains slight overspill of coal lumps from coal layer to E. — probably deposited during roasting as it's a very loose coal layer.
- 28. Reddish-orange sand mixed with grey sandy soil. Some bits of coal; red clay pebbles. Sh's.
- 29. Possibly = 28. Similar but with more red sand

* 33 is the back (WEST) wall
of BUILDING A.

This wall has been raised from the level of
the loose coal lumps on E-side —
which is construction level?

The shape of the R.T. indicates not a
wall with offset foundations — only slightly
offset by bearing-cut stones as opposed to
digging big trench.

Does level of offset indicate contemporary
ground level? ∴ consider lumps now offset?

Opens against the wall in 1971C.

Possibly coal is in building A — looks built
up against a wall — so possibly = ground
now as cellar / storage, and perhaps coal
for ovens behind the wall, in which case
must postulate a doorway.

If "cellarage" possibly no ovens actually
put in for this building at the level which
survives — just used existing levels

If coal IN building A, it could have been
STANDING when B/S wall built — distributed then
coal spread S. (in E-section), when demolished?

and less grey sandy. Few bits of coal.

30. Mixture of reddish orange sand and clean yellow-brown
sand. Shovels. Few bits of red clay.

31. Similar to 28 but darker = darkish grey sandy soil
Mixed with red clay, coal, and yellow sand. Sh's.

32. Clean yellow-brown sand. No sh's. — Few pecks of
red clay and yellow b/s.

WALL 33. Large blocks of STERRY. Flatish but otherwise
unfaced / unworked. Used as quarried.
= WALL FOOTINGS.

34. WALL BONDING — solidly packed red clay and stony
brags.

35. Wall bonding / base of wall = red sandy clay and
reddish orange sand.



36. Dark grey silty / sandy soil with coal brags / lumps.

37. Thoroughly packed but loose layer of coal. Small
lumps (fist-sized) + brags. Cf. layer in main
E-section. Probably same deposit.

38. Thin sample of small bits of red clay. Mixed with
underlying layer.

39. Rich organic brown colored silty / sandy layer.
Cf. Main E-section.

40. Fine yellow-brown sandy soil. Not very distinct from
39/41 — just yellower.

41. Fine grey-brown silty / sandy soil. Faint tiny pecks
of red clay, charcoal, yellow sand.

nos. 39/40/41 are the only layers clearly on the wall offset this side.

- 42. Silty dark grey-brown sandy silt. Few tiny streaks of red clay, mainly along the top. Possibly = A1.
- 43. Hard, crusty, good surface layer, probably = flow (which building? doubt it's building A) = yellow sand mixed with grey sand to sandy. Few tiny streaks of red clay + yellow b/s. Looks greyish yellow.
- 44. Thin sample of little bits of red clay possibly with a few streaks of orange brown clay. Very thin and indistinct.
- 45. Looks dark grey / yellowish = mixed yellow sand, bits of dark grey sandy, mixed with red clay, orangey yellow b/s, and occ. ch. cl.
- 46. Looks red - mixed little bits of red clay and dark grey sandy.
- 47. Bits of yellow b/s in yellow-brown sandy.
- 48. Very dark grey sandy with bits of red clay
- 49. Yellow brown sandy with a few red clay streaks.
- 50. Bits of red clay - probably in 51.
- 51. Is this the possible PH when section drawn further S.? If so, it's dubious - possibly due to odd filling of area if clay lining + dome stood then collapsed this way... = looks very yellowy brown // yellow brown to yellow grey sandy silt with a lot of yellow sand and bits of b/s. - few streaks of charcoal + red clay.

- 52. Streak of red clay. with 51?
- 53. Bits of red clay in dark grey sandy. with 51/52?

SEE PHOTOS

OVEN

Layers in thin nearly all very fine or dark grey or the red clays. "Streaked" by hollowing red clays. Red clay of ? lining / down more clearly distinct from red clays in filling when contiguous.

- 54. Dark grey sandy soil streaked with red clay + ch. cl.
- 55. Similar 54 but brownier & separated by streak of yellow sand.
- 56. Very pale grey (ashy?) sand.
- 57. Loose dark grey sand mixed with grey like 56.
- 58. Red clay running into grey "ashy" like 56.
- 59. Grey sandy with lot of yellow streaks. Not all that different from 51 but greyer. Red clay streaks.
- 60. Brown-grey sandy with red clay streaks. Ch. cl. streaks.
- 61. Lumps of red clay in dark grey sandy.
- 62. Dark grey sandy with red clay streaks.
- 63. Red clay with slight admixture of dark grey sandy. Rather lumpy. ? collapsed down.
- 64. Dark grey sandy.
- 65. Like 63. — possibly 64 is just a lens.
- 66. Dark grey sandy with bits & pieces of red clay.
- 67. Mixed brown-grey sandy + red clay + some grey clay.
- 68. Mixed red clay + dark grey clay

- 69. Dark red clay
- 70. Dark grey sandy, bedded with red clay.
- 71. Red clay possibly gone faintly purple-brown from light heat. 1 Bed of orange burnt clay. Not distinct from lining except for slight discoloration + slight texture change. Can't find exact "edge".
- 72. Light grey clay to clayey heavily bedded with red clay. Possibly few beds of orange burnt clay.
- 73. Dull dark grey clay with a few streaks of red clay.

* 74. Red clay. Over lining? If so, top curvature indicates commencement of DOME? Shows no signs of burning. From x to x not as clear as drawn - I think the B/S well is just behind to better cleaning impossible. Dark grey silty bits which may show in photos probably = well behind.

75. Looks blackish grey - seems to be discolored charcoal (= the black) mixed with dark grey + light grey clay with occasional red streaks.

IF this is over core 74 must be secondary lining. Check Monahan Strat for. 1971.

76. Dark grey-brown sandy - ? slight grey clay admixture.

77. Red clay. Lining of urn — as 74.

Still urn, but odd stratification here — almost as though clay lining has a construction channel — this coincides with grooves in urns noted elsewhere? Particularly B472? Prior's same animal burrowing here (into a section) but numbered layers are OK — distinct & not burrow disturbance.

78. Yellow brown sandy flecked with red clay.
Some grey clay?

79. Coarse fine sand with a few pebbles of charcoal.
Like redeposit of ditch sands but slightly harder & drier, though where new ditch layers not fully distinct. However, DEFINITELY cuts up over 75.

80. Hard light grey sandy silt mixed with fine sand. Flecks of yellow b/s & tiny pebbles of ch. cl. & red clay.

81. Yellow sand/b/s flecked with grey sandy. Few red clay pebbles. Probably with urn, not with wall.

NB this must be near N. limit of urn — clump S. of this didn't show clearly or even suggest clay lining. See 1971 sections.

NOS. 89/90/91/92/93 — very difficult to distinguish one from the other — in fact there is no clear distinction and could all be one deposit — or practically any re-arrangement of stratification down!!

Could be construction or destruction of the B/S wall 18 which is probably set far behind down section. Or even part of the wall itself if the top spread S (see note on 18)

NB. Section dried out when descriptions written.

CONTINUATION W. OF ROBBER TRENCH.

82. Muckish soil — spread from 1971 backfilling
83. Various backfilling 1971 of 1970C, N. Extension.
84. Various dumped by Flying Squad excavating 1971C and area. √1950-ish?
85. Bricks, mortar, general rubbish — in black soil. Denudation probably.
86. Silty black soil — pre-denudation topsoil.
87. Feature ~ black soil, lumps of white plaster/mortar.
87A ~ Grayish black soil.
88. Silty brown to red brown soil with bricks of ch. cl. — tile frags, bits of sk., some white mortar bricks.
88A. Probably = 88 but more disturbance + pervasion via 83/87 makes it look darker and browner.
89. Mixture of red clay and red brown soil. Distinguishing factor among group of red clay (ey) layers = small lumps of white mortar/plaster. Also some bits of sk. and (med.) tile frags.
90. Red-brown soil mixed with red clay — distinguished by large content of very small rounded frags. of sherry.
91. Largely red clay. Same soil + coal bricks and bit-sized bits of sherry. Distinguishing factor = yellow content (lots lumps and yellow sand)
92. Dark red clay with some bits of coal, tile (?brick) frags, lumps of white mortar (distinguishing factor).
93. Not very distinct from 92. Red clay but purer + cleaner + sandier. Only 2 coal bricks, no white mortar, some bits of b.s.

Not sure what's going on here.
? construction or destruction material for 18.
Maybe something else altogether. Bear in mind - - - -

- (i) 99 only just out from section
- (ii) Could be stratification or one deposit
- (iii) Could be related to veins which existed not far S. of this
- (iv) Similar khaki clays also big pit / beneath S.W. of this
- * (v) ? Working over vein below
- (vi) Primarily related to building A but probably later. Underlying vein most likely to be Building A period.

what's thing
lower level?
f/s mine.



94. Silty khaki clay like 18.
Construction level for 18??

95. Pale pinky clay. Draw or with steeris?

96. Primarily not = 95 but could = 93.
Sandy red clay with sk.

97. Silty khaki clay like 18.

98. Pink clay like 95. Seems to split the khaki clay into two deposits.

99. Steeris

100. Grey sandy soil with bits of ch-cl. - don't think it's coal.

101. Silty khaki clay like 97/18

102. Khaki clay - ? = 97 or ~~101~~ 101?

103. Khaki clay - ? continuation of 101 - or of 94?



104. Red-grey to red-brown sandy soil.

105. Red-brown sandy soil with a few small sk's. Pit like 90.
Layers here seem not to relate as expected to layers E.
of 87/87A.

106. Mixed sandy red clay and silty khaki clay.

107. Light grey sandy soil.

108. Trampled speckled of pinky red clay, where it exists E.
if the latter stone it has 3 bits of coal in it - the large bit
of coal sandwiched between 2 sks may \therefore be continuation of it.

109. Soft very dark grey sandy soil - possibly darkened by content
of disintegrated ch-cl. / coal - contains one bit of coal
and several coal pieces.

110. Looks yellow-grey - basically red-oxidized yellow sand / b.s.
with a slight admixture of grey sandy. Looks as if it's gone

Seems to be OVEN or hearth here —

118 the bottom of it.

? debris from mass further S. — seems unlikely,
as this looks like a deliberate shallow cutting.

Is it aligned E-W, or something N-S?

If this is an OVEN IN SITU it is probably the
reason for the pale grey ashly looking (not ash composition)
below. They're probably turned to lightish grey from
heat above (see photos)

a lighter colour (sort of dirty whitish) from heat.

111. Similar 110 and probably a continuation of it. Shows less sign
of whitening effect.

112. whitish grey ash/clinker. Rather sticky texture. Contains an
bit of coal and pieces of coal or charcoal (too small to tell which).

113. Looks black = mixture of grey sandy and dense packing of
coal or charcoal. I think some of it's certainly coal —
too hard & shiny for charcoal, but possibly some charcoal too.
Over a flatterish piece of conglomerate — ? = question.

114. Pink clay.

115. Looks grey-black. Mixture of grey ash, grey sandy soil, coal
or charcoal blackened, few pieces of coal or charcoal.
Probably coal. Probably cut. W of sherry.

116. V. dark grey sandy soil with a few pieces of coal and
red clay.

117. Brown sand

118. Still dark grey to blackish grey — mixture of
sandy soil and grey ash with 1 or 2 bits of coal.

P.T.D.

NOS. 120/121/122 seem to involve the presumed effect of the sherry wall (building A).

Presumably \therefore they are an accumulation outside the wall and would therefore indicate the level of wall construction.

Is 123 then the C.T? or another layer of accumulation outside the wall?

Level of wall building could be new or under 124. — depends on how real is the distinction between 123 and 124.

- 119. Under 93 just W. of R/T.
V. dark grey sandy with bits of coal.
- 120. Silty slightly brownish grey sandy soil. Few bits of sh. and occasional flecks of red clay.
- 121. Similar to 120 but with more red clay flecks, particularly along the bottom; some yellow in it; plus a lot of small lumps of sherry (rounded).
- 122. Similar to 120.
- 123. Not very different from the layer W. of it. However there's a clear color change — this is very light grey, almost exclusively sandy soil (no flecks of anything) plus greater concentration of bits of sh. — I think there's an edge here to 123 but not 100% sure.
- 124. Looks slightly yellowish grey = grey sandy soil with some content of yellow sand. Some flecks of red clay and yellow bits, occ. charcoal and 2 or 3 bits of sh. The W. $\frac{1}{2}$ of this layer (approx from 122 W-wards and increasingly so to its W limit) has turned a pale ashy grey though the texture/composition is unchanged.
- 125. Soft, loose, and dark brown. Probably decayed wood +/or organic material.



- 126. Brown/grey sandy with ch. d. frags
- 127. Yellow brown to yellow grey sandy with flecks of red clay + ch. d. — possibly = 124?



Nos. 128-129-130-131-132 could all be one deposit
as the distinctions are minimal apart from the heating/staining
to pale ashy grey.

128. Lot of yellow in this. Grey to grey-brown sandy soil with
pebbles and bits of yellow-orange sand / b/s. Few bits of
sh. and red clay pebbles.
129. Could be 128 - with seem to form a header band, possibly
a sub base (above). Composition is much the same as
128 with distinctive bits of orangey b/s. However, this
has turned to a pale ashy grey - gradual change from
E to W - division between greys / clays indicated
by line between 128/129
130. Rather similar to 129 but smoother texture and even lighter
grey. More heat?
Probably = 131 heated.
131. Smoothly textured yellow brown sandy soil.
132. Yellow-brown to yellow grey sandy with a few streaks of
red clay and charcoal.
-
133. Yellow sand / b/s
134. Distinctly brownish = brown sandy with yellow streaks & ch.c.
Turned greyish at E. end.
135. } Very similar, but divided by yellow streaks which seem to
136. } be continuation of 133. - both mid grey to light grey
sandy soil mixed with yellow sand and red clay and
occasional ch.c. - occasional bits of b/s.
137. Sandy soil all turned pale ashy grey. Some ^(very, pale green) green stain at
the top which continues about 3" into 136. Could be 136
turned pale grey. Softer, + lighter grey than underlying layer.
138. Sandy soil all turned light ashy grey. Has hard grey lump at
either end separating it from other layers but probably this is

SOME GENERAL NOTES ON THE GULLY.

This gully presents several problems.

A/ It is not clear from which level it is cut. SE. on the E. side when it is from below 174 and all the layers below 174 (except perhaps one) clearly belong to the earlier E-W (Saxon/IA) ditch.

The W. side is the problem - possibly comes from the level of 157 (or even just below that level at the gully edge?) or from the level of 151. Depends on whether one equates 174 with 151 or with 157, and they are all very similar layers. 174 is slightly less humid than 157 - but in quality is $\frac{1}{2}$ way between 151 and 157!! So it's anybody's guess.

Also, the layers under 157 were a problem. See later note.

B/ This gully was not evident (?? unexcavated in dryish weather) until the section was cut back to this alignment, although the underlying ash layers were evident before that. Really only became clear when the section was cut back beyond the N edge of the pit at which point the rock-cut channel of the bottom of the gully came clearly (see photos).

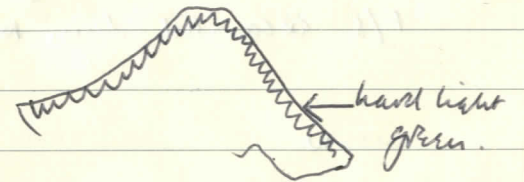
C/ Now it is clear in section several mistakes became clear. Obviously the gully extended further S, and has its origin S. of the F/S trench (with ended?) Slopes quite steeply from S to N.

an arbitrary division. Could = 137.

139. Lot of yellow in this makes it distinct. Light grey to light brown sandy soil heavily marked with yellow sand and bits of b/s. Red clay beds, tiny charcoal tracks, few bits of sh, and odd faintly greenish iron-brown tracks.

140. Proximity = 139. Similar composition but turned ashy grey.

141. Similar composition 139/140. Has same elements of ashy grey staining but distinguished mainly by faint light green iron-staining which exists overall but is particularly concentrated on E + W sides



142. All turned pale ashy grey but darker & softer than 138. A spongy sandy soil with a few tracks of b/s and ch.d. and 1 or 2 bits of red clay.

143. Still ashy grey but marking the limits of the colour change. A lightish grey sandy soil with harder v. dark grey sandy layers. Some faint green staining. Few tiny tracks of ch.d., some red clay, some bits of b/s and sh.

144. Light brown sandy soil with yellow tracks & tiny ch.d. tracks.

145. This is very yellow. Nearly all yellow sand/b/s with slight admixture of grey sandy soil and some hard dark grey sandy tracks. Few tiny tracks of ch.d.

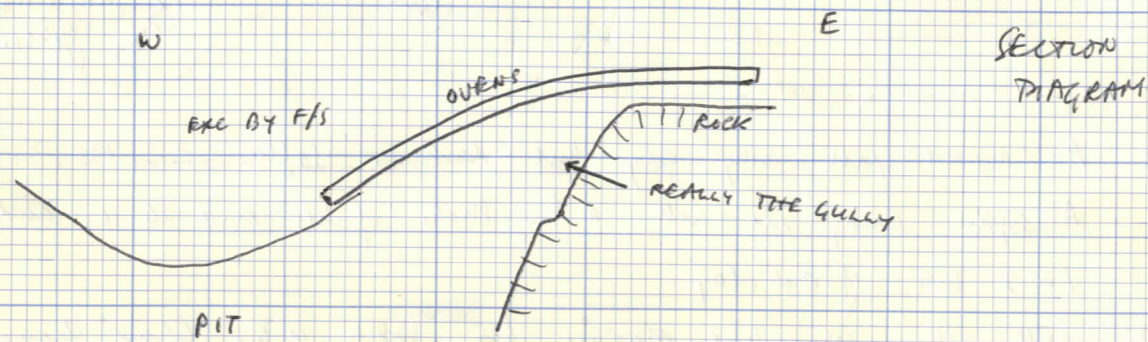
146. Pointing root/burrows. Light reddish grey/brown sandy with a few tracks of ch.d. and yellow b/s.

147. Distinctly hard layer. Even admixture of hard grey sandy

Also the E. edge of the large pit excavated in 1971 — always odd, but thought in 1971 to be a "stepped" edge due to erosion of the upper member pebbles over the lower sandstone — is now clearly, for the top slope, the E. edge of the gully, and the true edge of the pit (as in note) is the squarish-in-plan, vertical edge of the lower level.

When digging the pit in 1971 the gully was not seen at all; perhaps with some justification as.....

(a) There was also this pit above rock level — the F/S excavated down to them



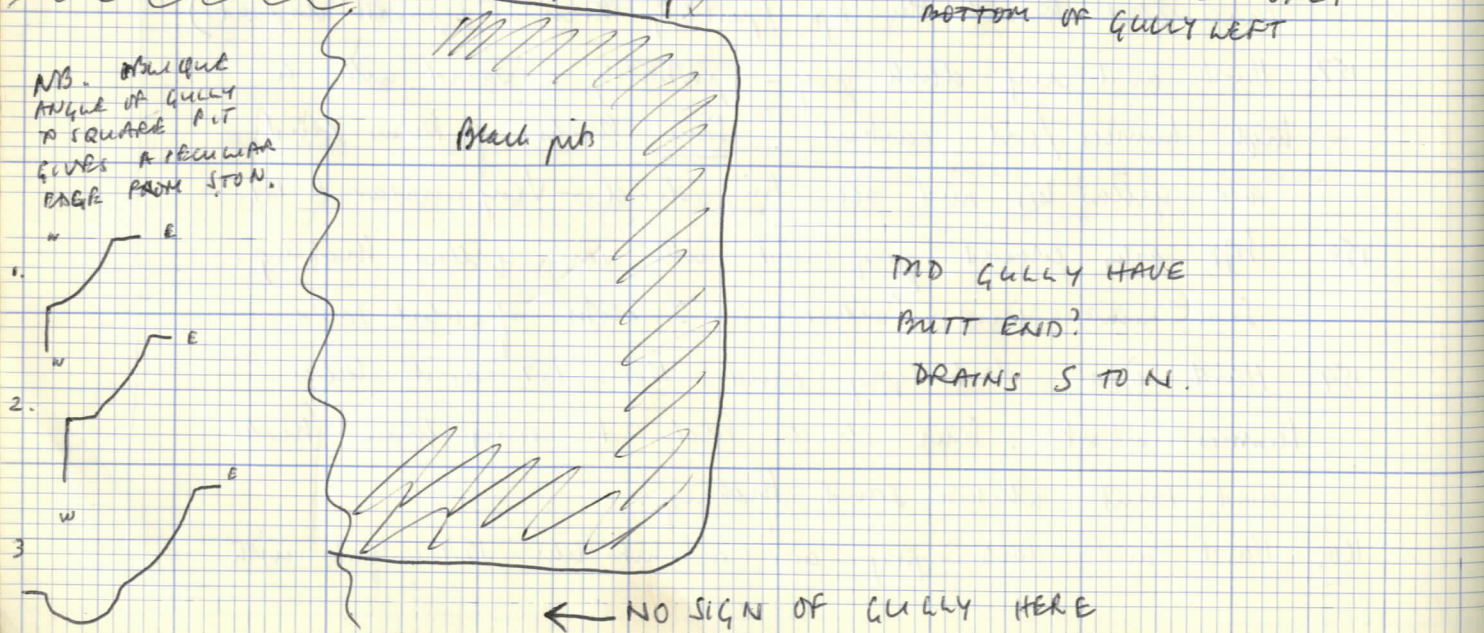
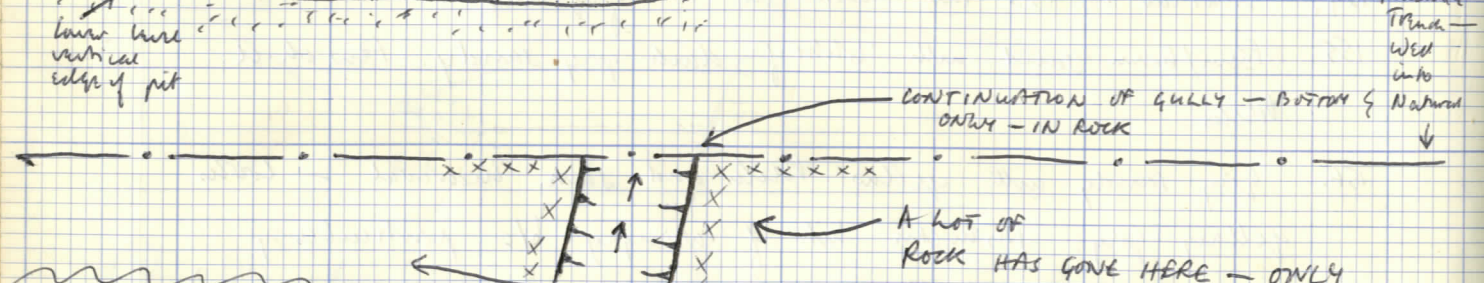
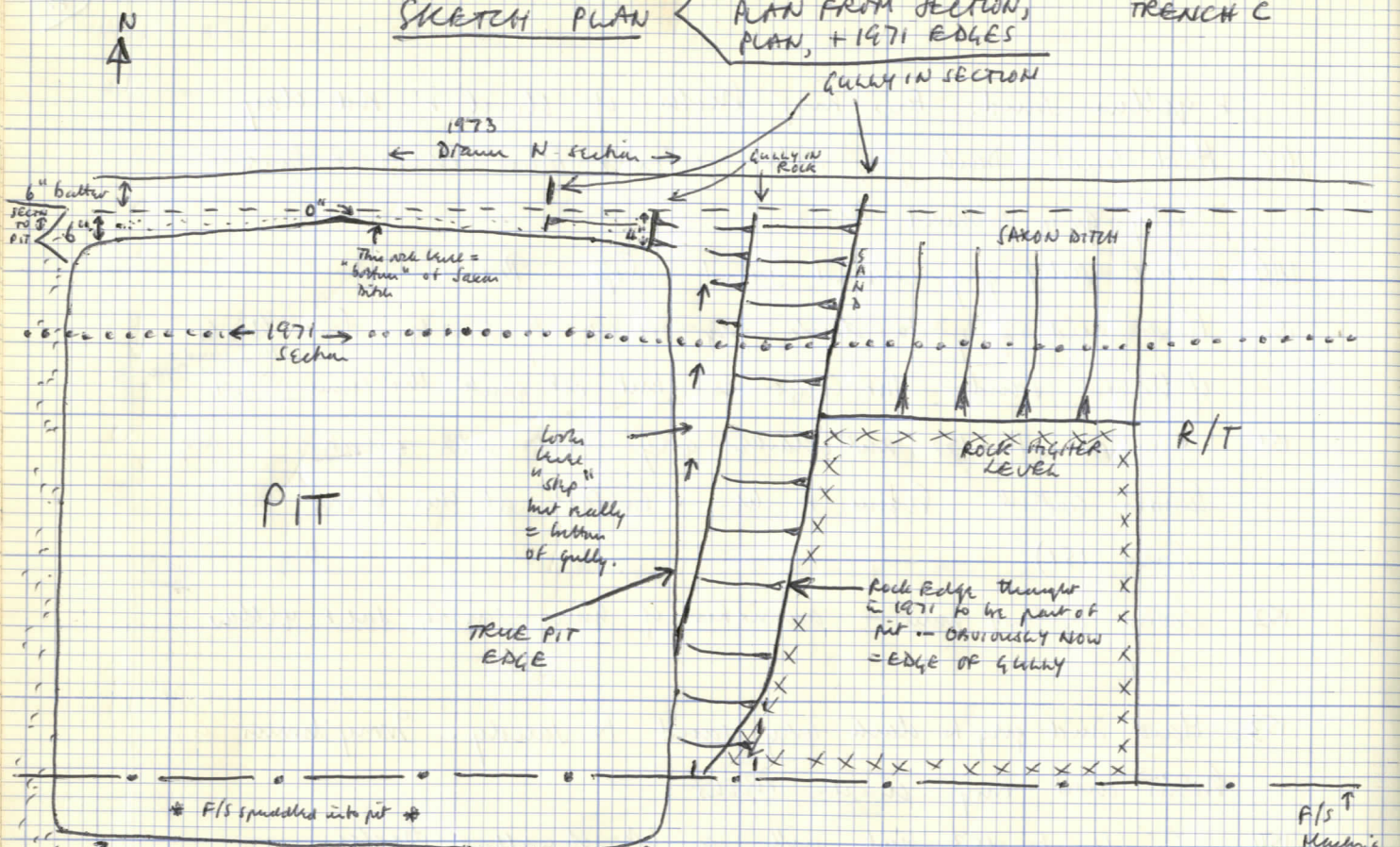
(b) F/S digging had disturbed a lot — particularly their E-W trench; spuddling into the pit from the bottom of their trench; also excavating into the pit W of the axis and leaving them standing proud; also excavating N of the axis to leave them standing proud.

(c) All dry weather of 1971.

- + yellow sand. Few tiny flecks of ch. cl + red clay.
- 148. Hard sand. Dark grey with yellow + faint flecks + some ash-grey coloured flecks.
- 149. Pale ash-grey coloured sand. Soft. Banks.
- 150. Hard mid-grey to dark grey sand to sandy. Some flecks of lighter sand — bit like 148 but not quite the same. More sand + less soil than 151.
- 151. Similar to 150 but darker grey and with greater humus content. Seems to be a surface at this level (over 151)
- 152. Looks yellowy brown — admixture of brown sandy soil + yellow sand.
- 153. Hard mid-grey to dark grey sand to sandy. Many brown flecks and tiny ch. cl. flecks.
- 154. Similar to 153 but with a lot of yellow flecks.
- 155. Faint/brown sand with blobs of dark grey sandy. Few ch. cl. flecks.
- 156. Grey sandy with yellow flecks and some charcoal — looks yellowy grey. Distinctive bits of waxy b/s particularly concentrated towards the top (possibly then a separate deposit)
- 157. Hard and very dark grey — probably a sand with a high humus/soil content. Some flecks of faint sand and yellow lfs and occ. tiny ch. cl. — very similar to 151.
- 158. Soft ash-coloured grey sand with some yellow flecking. Some white sand flecks + 1 or 2 blobs of white sand.
- 159. Hard crusty dark grey sand. Not = 157 as it lacks humus content. Some ch. cl. flecks + iridescent brown flecks and faint whitish sand flecking.
- 160. Hard and dark grey and a bit like 159 but with

SKETCH PLAN

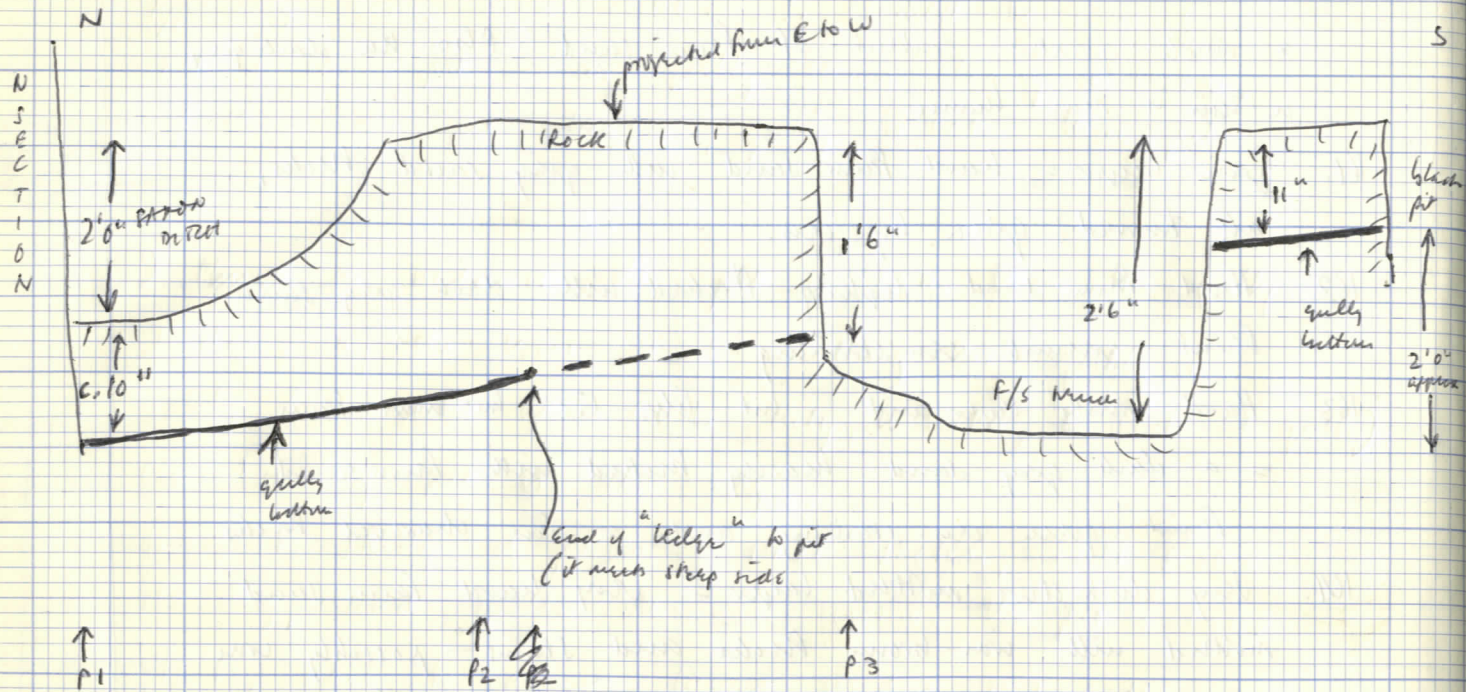
ADD TO MAIN PLAN FROM SECTION, PLAN, +1971 EDGES SEE 1971 TRENCH C



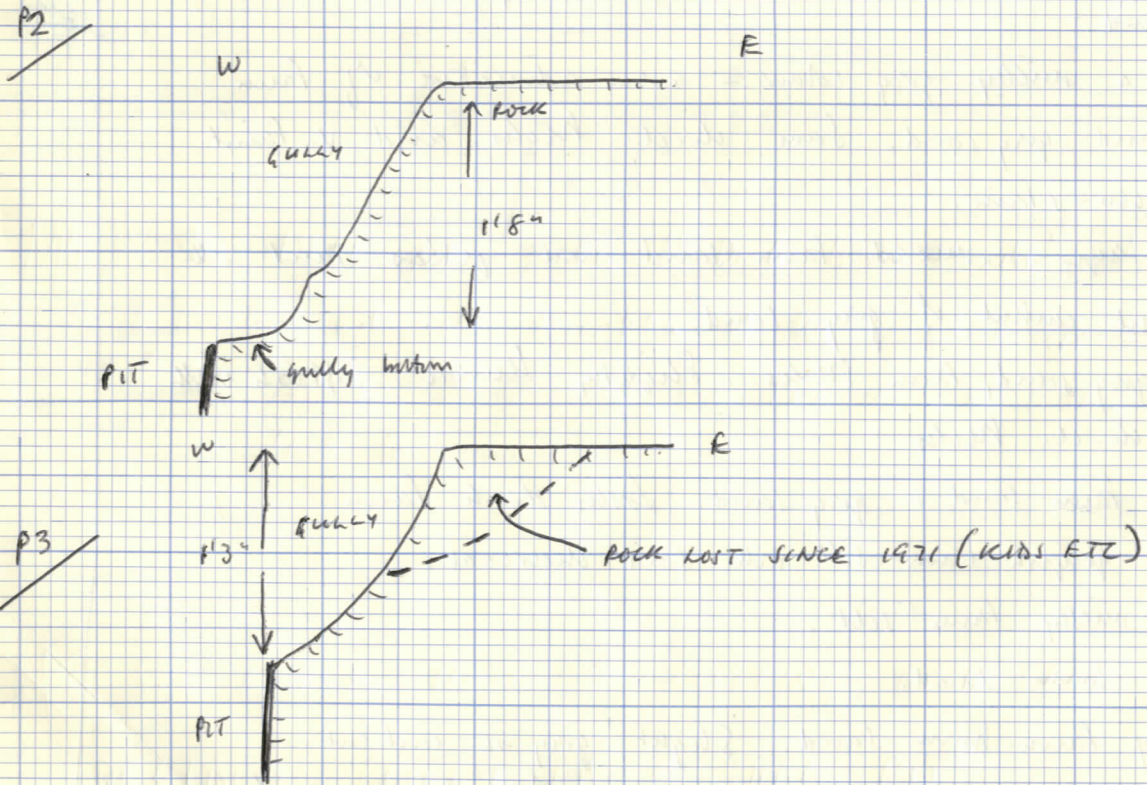
a much greater content of fawn sand. Also the dark grey in this is more humic

- 161. Green layer = hard fawn sand with grey sand flecks, all turned green by iron.
- 162. Hard fawn sand lightly flecked with dark grey sand. Faint greenish iron staining.
- 163. Hard rusty layer and a bit like 153 but more fawn. = a dark grey sand heavily flecked with fawn sand. Faint green iron staining and a few charcoal flecks.
- 164. Very distinctive mottled layer = very hard fawn sand mottled with iron-brown flecks and stains - possibly iron pan. Basically derived from fawn sands from early ditch running E-W.
- 165. Mixture - fawn sand with big blobs of humic dark grey sand.
- 166. Looks a milky grey colour = even admixture of fawn sand and grey sand. Some ch.c. flecks and v. faint green iron stain.
- 167. Pale layer = mixed fawn sand and yellow sand with a slight content of grey sand.
- 168. Mid grey sand, fawn flecks. Slightly humic. Softish with a few ch.c. flecks.
- 169. Mixed fawn sand + grey sand. Looks dark fawn.
- 170. Hard greyish fawn silt with some charcoal.
- 171. Dirty milky fawn silt.
- 172. Dark brown sand.
- 173. Dirty fawn-brown sand. Slight greyish content.
- 174. Dark grey with surface on top. Pit like 150/151 but

Profiles (E-W gully)



P1 = N SECTION



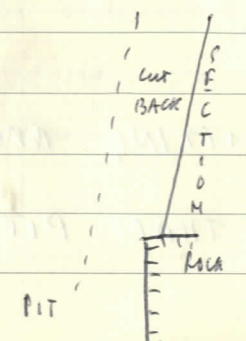
also like 157!

= dark grey sand to sandy with humic content.
 Fine brown sand beds derived from below and a
 few beds of charcoal.

SEE GENERAL NOTES ON GULLY. (START BACK 3 PAGES)

CONT. GENERAL NOTES ON GULLY.

- (i) Not seen in section in 1971, ∴ pit should be later unless it was missed - but section drawn then in hot dry weather and not looking for gully.
- (ii) Not seen until section cut back in 1971, ∴ pit should be later.
- (iii) When pit was cut, could well have removed soft fill of gully back to its rock edge (a trap in N. edge with thin rock cut features) or the soft fill could have eroded.
- (iv) When cutting section back, seemed to be dark pit layers until beyond N. edge of pit in rock - so pit should be later.



PTO

- (v) Problem is layers under 157. They don't all look typically clean Saxon ditch — ∴ should be some of fill of larger pit — as gully shows clearly in section, if there are pit layers, gully is later than pit.

I think on balance the pit is later than the gully.

Judging by the level of its cutting the gully is early (into ditch brown sands only, in section, E-side of gully). Unfortunatly pit is also earlyish.

Suggest study of photos of 1971 section, 1971 section drawing, and unless otherwise assume the pit is later.

Qf to, have to assume layers under 157 either are part of Saxon ditch, but atypical, or there's been another Saxon less apart from gully / square pit.

NB. An 1971 pit rather "dark brown sands" seems a fairly adequate description of the general appearance of the gully. An open nos 159 down to bottom of gully look dark brown sand.

* SEE WATER NOTE — CUTTING BACK SECTION —

DECIDED GULLY LATER THAN PIT

SAXON DITCH FILLING (ALL MUCH DARKER — FAWNS/GREYS)

- 175. Fawn sand with 1 or 2 inches of ch.c. — slight humic content. Primarily thin one in gully, not Saxon ditch.
- 176. Pale fawn-brown sand. Faint ch.c. and faint grey Mashing.
- 177. Pale yellowy fawn sand. Few inches of ch.c., faint grey Mashes.
- 178. Looks milky grey = fawn sand with content of grey sand or humus — probably humic content. Few inches of charcoal.
- 179. Fawn sand, very finely Mashed with grey.
- 180. Mink fill (primary). Not drawn in detail, particularly below R/T and E of street. Largely yellow redwash with some fawn sand. Looks v. clean and pale. Occasional fawn or grey lenses etc.

PROBABLY PIT
(DECIDED WHEN CUT BACK)

- 181. Looks milky grey — similar 178. Fawn sand with grey humic content.
- 182. Like 181 but with large blobs of yellow sand from b-s. — looks yellow.
- 183. Like 181.
- 184. Like 181 but possibly greater humic content.
- 185. Like 184 but greater content of fawn sand.
- 186. Darker than 185 but similar. = dark grey. Grey sand Mashed with fawn sand and high humic content. Sparse Mashes of charcoal.
- 187. Fawn sand
- 188. Coarse yellow sand from b/s. Same humic content.

189. Like 186 but plus a content of coarse yellow sand.
Looks dark grey and humic

190. Coarse yellow sand and fawn sand with slight humic content.

PTD

I'm bothered by nos. 187 to 190. They do not look like the typical saxon ditch filling noted elsewhere. Generally darker and greyer with higher humic content. Possibly they belong to the square pit just S. of section - in which case gully must be lower than pit.

Alternately, there's no reason the ditch fill should not show localized variation!

Nos 191 to 197 are typical of the usual ditch filling.

191. Pale fawn sand with some pale grey humic content.
Sparse ch.d. Mels.

192. Coarse yellow sand mixed with fawn sand.

193. Mixed grey + fawn sand - ? humic. Sparse ch.d. and very brown Mels.

194. Fawn sand with faint grey (? humic) content.

195. Fawn sand.

196. Dark grey sand - ? humic.

197. Clean fawn-brown sand, faintly yellowish.

NO YELLOWS - ??

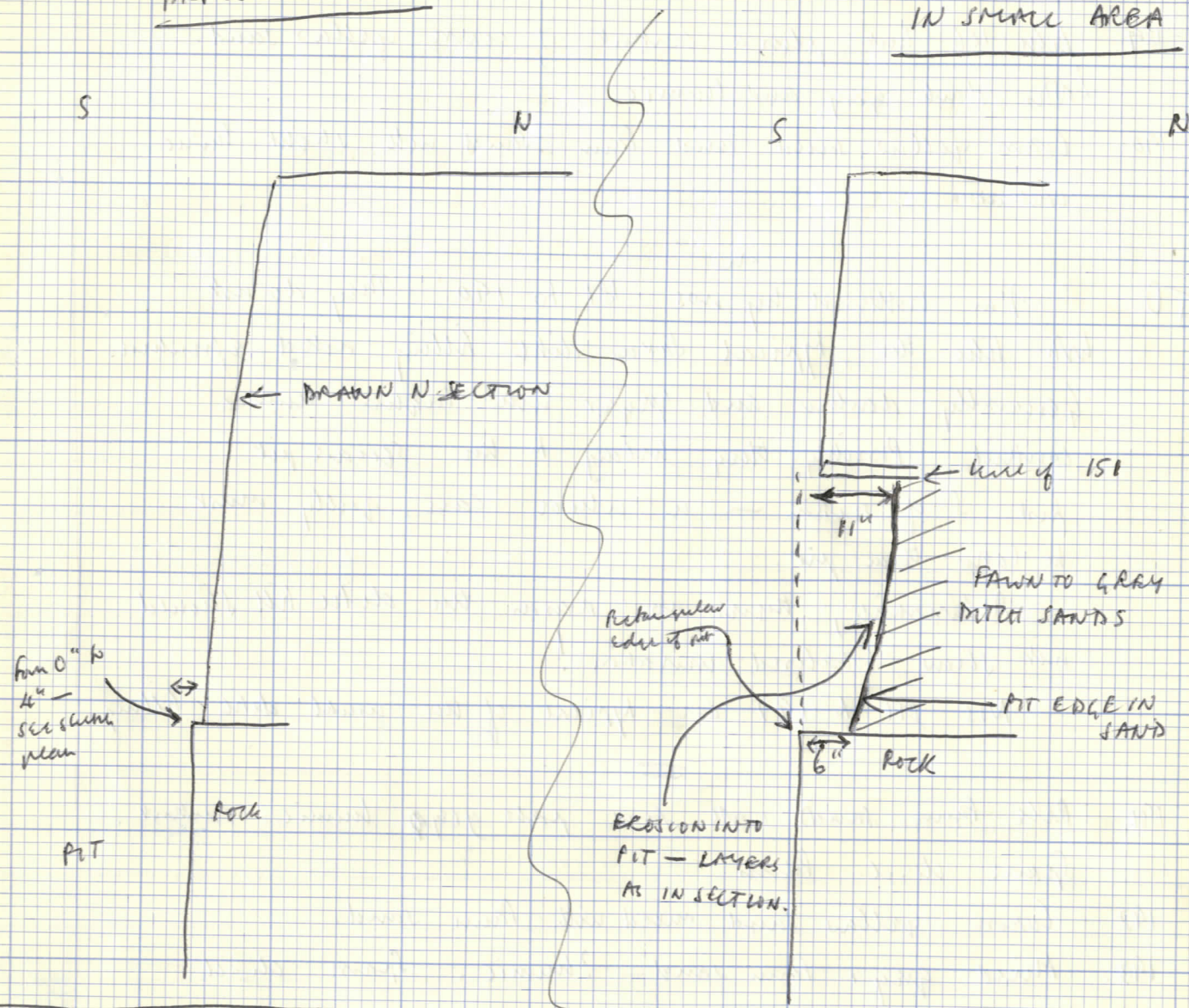
↑ PROBABLY PIT -
LATER DECIDED.

PTD

SEE LATER NOTE

DRAWN SECTION

CUT BACK
IN SMALL AREA



* PTO
PROBLEM OF NOS 181 TO 190

After drawing the section I've cut back here —
Nos 190 / 189 / 188 / 187 / 186 / 185 / 184 / 181 / 182 /
183 AND 157 + 156 in fact disappear
fairly quickly to give clean farm ditch sands —
TYPICAL STUFF.

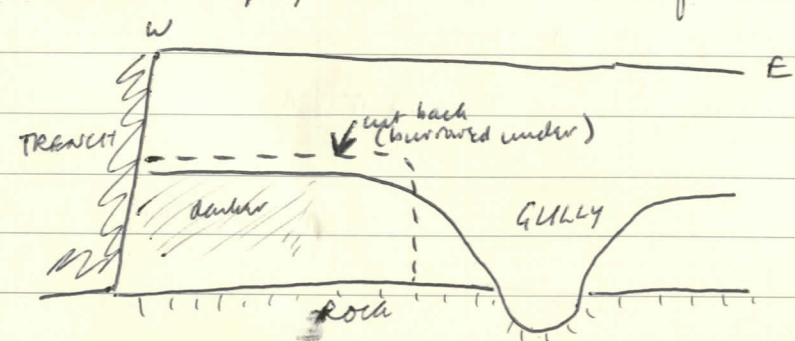
I think we can assume pit-contamination
here, and erosion of ditch sands into pit to give
the odd mixtures. This means the gully
must be lower than the pit.

RU = pit layers upto level of 151 — in
fact all the layers, including 191 to 197,
which exist W. of the gully from rock upto
151 could well be pit contamination, particularly
as they do not correspond to layers E. of the gully.

*

* This means the PIT dug in 1971 is contaminated.
As far as I remember, not much pottery, but certainly a
splashed W. handle from top E side, probably = GULLY.
Place pit near the bottom.

When cut back, the farms/groups of the ditch
appear in horizontal bands similar to those
E. of the gully. Oddly, they still appear
darker + greyer for about 1/2 of the section showing



but are in the
right spectrum
for ditch fill.
? NOT = another
Feature!!

* LATER NOTE

Having looked at 1971 March C section drawing
once again I doubt the gully being later than
the large square pit!!

?? Something else in section cut by both pit and
gully, with pit later than gully?

N. SECTION CONT. IN SITE-BOOK 9