

NOTTINGHAM 1973

FISHER GATE

FG73

SITE NOTEBOOK 9A

MAIN N. SECTION (H&J)

& AREA H

FG. 73.

NOTEBOOK 9A

LIMITED TO DESCRIPTIONS OF MAIN SECTIONS  
DRAWN TO SCALE OF 1" = 1' ON PAPER.

USES SECTION NUMBERS ONLY.

NOT MAIN EXCAVATED STRATIGRAPHY NOS.  
WHICH ARE ○'d

\* ALSO CONTAINS SOME STRAT. NOS. FOR FINDS  
FROM SECTIONS (i.e. (533) (534) (535) (536) (537) (538) (539) (540),  
THESE CONT. IN BOOK 9B)

\* NB. The main north section and the E+W  
sections of the N. extension were drawn  
without reference to notebooks and N-S sections.  
Consequently ~~there may be some~~ there may be some  
adjustment necessary. The main scale sections  
on paper @ 1" = 1' are more likely to be the  
latest version.

C.Y.

\* NB Could no 195 (charcoal)  
in this section be the same period  
as the large clay area just South of  
here which was using charcoal?

EAST FACE OF TRENCH B (REDRAWN - FINAL VERSION)  
CONTINUED FROM SITE NOTEBOOK 9

SECTION  
NOS.

238

Very similar to 235.  
Looks mid-grey with brown nodules.  
Extra content of several random streaks/lenses of  
white sand in a wobbly formation.  
= Silty mid-grey sandy (? heavy/clayey).  
Slight admixture of grey to brown sand. Several  
small bits of whitish sand.

239

Looks brown with whitish grey nodules.  
Comparatively clean admixture of brown and grey  
sand with whitish sand nodules. Not silty at all.

240

Greyish brown sand rather similar to 239  
and could well be same deposit.

~~241~~

\* Nos 241/242/243 form a harder more  
compacted band. Hardness is quite pronounced in  
comparison with layers above and below.

241 Looks light grey with whitish areoles.  
= admixture of fawn sand and pale grey sand  
with streaks of white sand.  
2 pebbles.

242 Rather similar to 241. Has a peculiar barely  
visible horizontally streaky effect of brownish sand  
content.

Looks light grey with whitish areoles.  
= admixture of fawn sand and pale grey sand.  
Faint brownish streaks. Some darker grey streaks—  
probably sand. No turfy consistency.

243 Looks mid grey to dark grey, and similar in  
appearance to 238.

Has a considerably silty content but could not  
be described as turfy.

= mid-grey to darkish grey sand to sandy silt.

Patched with whitish-fawn sand. Contains several tiny  
pebbles and one large charcoal streak.

\* <sup>LATER NOTE</sup> CERTAINLY "TURFY"

\* After exposing more of 244 it has quite a few charcoal streaks in it towards N.

4

244 Looks mid-grey to dark grey - fairly similar in colouring to 243 but is softer.  
Seems to be sand with grey sandy streaks. Possibly the streaks are lumpy, but not really a turf layer - consistency is sand rather than turf / clayey.  
3 or 4 largeish charcoal streaks and very faint whitish sand streaking.  
\* Might be called "lumpy" - <sup>later</sup> CERTAINLY "TURFY"

245 Mid-grey to darkish grey sand. whitish sand streaking. Faint yellow colouring from admixture of yellow sand-wash.

246 Fairly similar to 244 but ~~less~~ sandier.  
Looks mid-grey to dark grey.  
= slightly lumpy streaked grey sand to sandy with faint yellowy-white streaks from slight sand admixture.  
\* LATER NOTE - This is certainly lumpy / clayey consistency. mid-to dark grey with faint yellow sand streaks. Could well be part of 244

247 Similar to 245.  
Looks grey with faint yellow / white streaks.  
= Admixture of grey sand and yellowy-white sand.

TRENCH B CORRELATION TABLE

(MICH LAYERS)

WEST FACE OF TRENCH B

(= SECTION XY - SECTION NOS. IN BOX 13 - SEPARATE NUMBERING SEQUENCE)

EAST FACE OF TRENCH B

(SECTION NOS. - BODIES 9+9A)  
(SCALE 1" = 1' ON PAPER WITH MAIN N. SECTION OF N. EXTENSION)

BUT  
PROBABLE -  
OTHER  
COMBINATIONS  
POSSIBLE

224	229 (plus 228)	both very similar + similar deposition.
223	227	perhaps but 227 looks cleaner
222	226	perhaps - roughly similar but 222 more whitish, 226 more murky murky
221	225 (+223?) (+224?)	- perhaps but ??
225	230	- looks similar < 230 looks a bit more like 226 than 225
226	231	- looks similar
226A	232	- looks similar
"Grassy pan"	233	
227	234	- roughly white

248 looks mid-grey to dark grey ~~with faint~~ similar to 246.  
= Grey sand with faint white sand bedding.  
Possibly slightly silty/murky  
Some minute charcoal flecks.  
"whiter" than 250 + lacks the yellow of 247

= As far as excavated to date.

NOTE

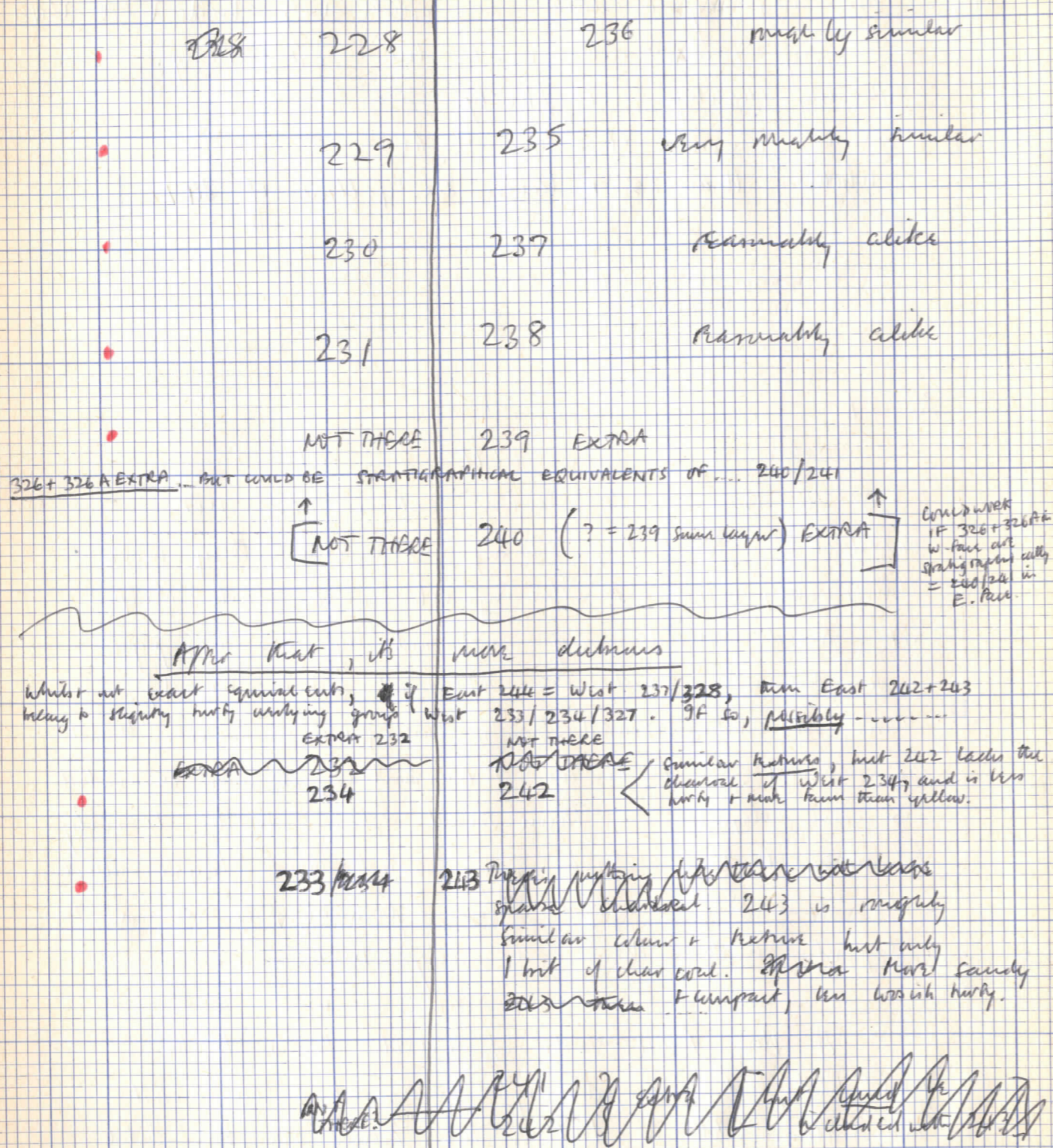
When excavated in 1971 the ditch layers in Trench B in the E+W sections were not correlated. In fact, during excavation they were almost impossible to distinguish in a dark deep 3ft trench, made very awkward by the iron pipe (not removed) and the B/S wall (not removed).  
Then, it all seemed fairly homogeneous coarse hard brown sand. As far as I remember, it was excavated as one deposit of brown sand down to the heavily charcoal-flecked dark grey sand/mud layer which was separately removed; then, probably, as one or two deposits under the charcoally mud.

CHECK

If the East side of Trench B is to be published, it was probably excavated + correlated reasonably well in 1971 as far down as the ditch deposits under the bottom road. Also, everything down to the ditch-fillings as bedrock in 1973/4

WEST FACE

EAST FACE



Correlates quite well with the W side of trench B as raised during 1973 excavation ~~in~~ 1971 section ahead in red, and will require further alteration from excavation notebooks. So the E-side of trench B as drawn 1973 can be published as it stands down to the ditch filling.

For the ditch deposits, it might be better to publish the E. section as a mirror-image of the W. Face of trench B in its 1973 position (in notebook B). Strictly speaking, it was the stratification which showed in the W. section of B (redrawn) which was followed during excavation of the N. Extension.

Alternatively, if publishing the E. section as drawn 1973, I have attempted to correlate it to the W. section, but this has been done purely visually as there is no way of checking. Correlation based on the way stratification deposited as evident in section drawings, and by examining both sides of the trench to see if layers look similar.

TRENCH B CORRELATION

CONF.

WEST FACE

237 +/-  
328,  
probably  
328

238/239  
NOT THERE

EAST FACE

+ 246

244 - might be a less  
chemically less turbid version of 237.  
Apparently it might be 238 or 239  
with some extra layers which it  
is missing or not in W. Face.  
See diagram of 1971 changing into  
it and quite well defined.  
Certainly 244 is turbid. It's quite like 328 but  
more sandy and compacted. I think could be 328  
Also include 244 with 246

245 - slightly finer than 238+  
239, 247 is also like them,  
probably an extra.

240

246 or 248 are like 240.  
Either could be it. Or 247  
could = 238/239 in which case  
248 = 240 and 246 + 247 are  
extra layers.

~~CHECK THE TRENCH B FULLY EXAMINED~~

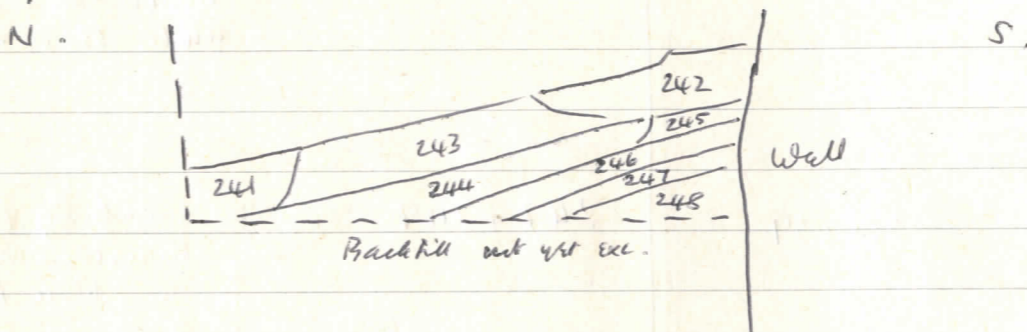
NOS. 247/248/249/250/251/252/253 in East Face belong  
to a similar group of layers as 238/239/329/330/331/332/333  
in West Face. They all belong to a group of yellow grey  
sandy/silty layers which exist UNDER the TURBID DEPOSITS  
and OVER the clean yellow/white crumbly PRIMARY silts.  
The precise equivalents, layer to layer, are however  
difficult to decide.

PTD

certainly belongs  
to similar  
turbid group

LATER

by making also from bottom up  
To clarify the correlation of both sides of trench B  
give bottomed this trench completely again [Still fill in  
N. end\*] by running 1971 back fill. When the  
previous notes were written it was (see section)



Also, looking at the section again in better light,  
there are several amendments to make....

245 is in fact now or not under 244, and just  
separates 243/244. (section now altered)

243 could definitely be described as "turbid". Seems to  
have a definite lenticular content though of a sandy  
rather than a clayey type.

244 is also certainly turbid and has a lot of charcoal  
pieces in the newly exposed area

246 is certainly turbid - of a light grey colour with  
faint yellow pieces and could well be part of 244



CORRELATION CONT.

WEST

EAST

332  
(include 333?)

253

Fairly similar, but 253 is darker and grayer.

330

252

Both have a similar whitish sand appearance, though 252 is "whiter" while 330 is more grey.

238+239

247+249

Similarly yellowish, though more yellow in West face

329

250  
(? and 248)

Similarly dark grey slightly brassy

NOT THERE

251 EXTRA

331 EXTRA

NOT THERE

THIS LEAVES ALL PRIMARY SILTS BOTH SIDES.

Usually in the rest of the sections, while all are DEPOSIT of yellow etc. The primary silts are composed of lots of "streak layers" difficult to follow any distance, from section to section. However, possible equivalents down westface

A.T.O.

East Face of B, CONT.

249

Between 246+247

Looks dark grey with faint yellow-white streaks. = admixture of grey slightly brassy and yellow white sand.

250

Dirty dark grey slightly brassy sand with admixture of whitish sand and soft brown woody/brassy/organic streaks which are very faint

251

Looks faintly organic brown weathered but largely dark grey with admixture of white/yellow sand. = soft and sandy but appears to be a slight dark grey brassy content in an admixture of yellow & white sand.

252

Comparatively white.

= Dirty whitish with dark grey sand admixture. Looks mid-grey to dark grey with pronounced whitish streaks.

CORRELATION CONTINUED

WEST

EAST

NOT THERE

255 EXTRA  
256

335

254 + 257

← Possible stratigraphically but not necessarily similarity

IF PUT

{ 334  
336  
337

255 }  
256 }  
260 }  
258 }  
259 }

Together as one group of layers, they have an equivalent group

Also, 258 is same stuff as 336

340

341 EXTRA

342

262

← all very similar stuff

264

← similar pinky stuff

343 + 343A

266

← similar white stuff

344 + 345

265

← similar stuff

339 + 338 EXTRA  
346 EXTRA

NOT THERE

PTO

+ 346?

could not see 346 with 344 + 345

253

In colour  $\frac{1}{2}$  between 252 + 251  
Looks dark grey with brown, white, + yellow oxides  
= white sand plus yellow rock wash plus heavy content of dark grey sand. Paler than 251 but darker than 252

The rest are PRIMARY SILTS — comparatively very clean yellows = wash from natural rock + or redeposited materials.

254

Mixed clean yellow + white sand

255

Hard, faintly bluish-grey, white sand

256

Crusty compacted sand yellow with pale rust-coloured streaks

257

Brownish-yellow coarse sand

258

Compacted hard dark brown slightly clayey sand (cf. South of the B/S wall)

CORRELATION CONTINUED

WEST

EAST

NOT THERE }  
347

261  
263 EXTRA

348

267 < similar stuff

348 EXTRA

NOT THERE

NOT drawn on  
Section - appears  
probably breaks  
NORTH or  
SOUTH.

268 EXTRA

END OF CORRELATION.

\* This correlation of primary beds is only a suggestion, based on stratigraphical deposition and layers with similar composition. Other interpretations may be possible which are equally consistent and stratigraphically valid.

THE TWO SIDES OF THE TRENCH SEEM TO CORRELATE REASONABLY WELL.

Cj.

259 Fairly grey-brownish coarse yellow sand

260 Cleanish coarse yellow rock-wash with lenses of mid-grey to dark grey sand. Hard.

261 Clean pale buff crusty sand

262 Very soft dirty white sand with slight admixture of yellow rockwash - pebbles + 1 or 2 dark grey sand lenses.

263 Coarse clean yellow sand

264 Fairly bluish washed pinky-white sand

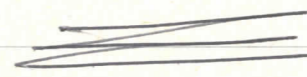
265 Coarse + hard. Mainly yellow rockwash but rather dirty giving a faintly brown colour. Faint admixtures of whitish sand. Few pebbles.

266 Pinky white sand

267 Coarse mixed yellow & pinky-white sand. Hard.  
Some dark brown streaks of iron pan.

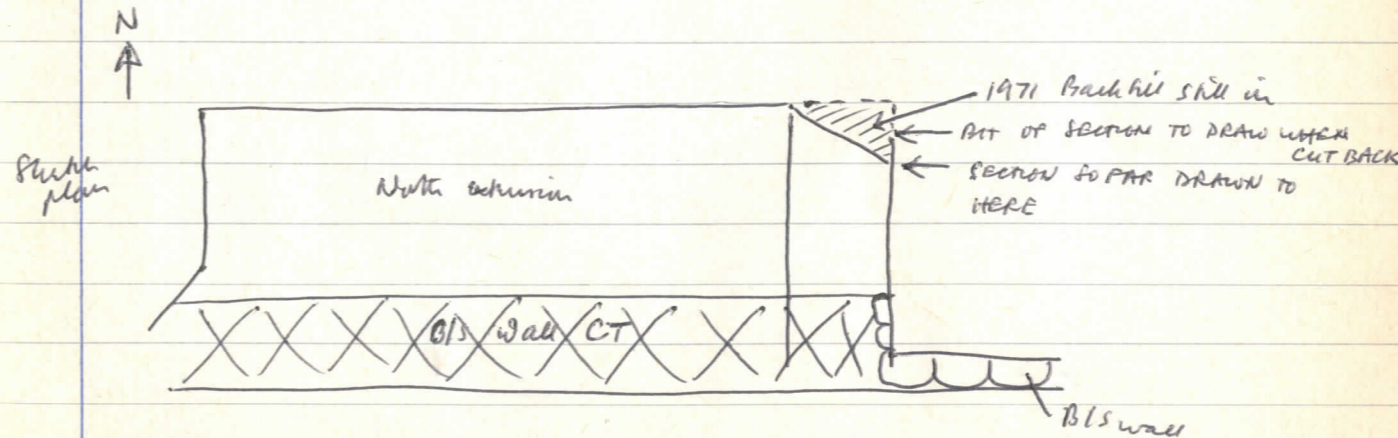
268 Thin hard dark brown iron-pan crust on natural  $\frac{1}{2}$ s  
= bottom of ditch.

\* END OF E. FACE OF B UNTIL  
(?) CUT BACK TRENCH B TO NORTH  
\* CORRELATION TO TDO ✓



✓ DONE

THIS SECTION ~~WILL~~ WILL HAVE TO  
BE EXTENDED NORTHWARDS IF/WHEN  
TRENCH B BACK FILLING IS  
CUT BACK TO ALIGN WITH N.  
SECTION OF N-EXTENSION



\* Also . . . . .

Extra notes added to . . . . .

216

~~217~~

221

170

165

163

EAST FACE OF TRENCH B, CONT., AFTER  
CUTTING BACK THE FILL ABOUT 1'0" TO NORTH  
TO ALIGN WITH NORTH SECTION OF N. EXTENSION —  
(layers which contain two just added to section)



Extra layers . . . . .

269. [under 253]  
Slightly greyish buff-brown sandy — looks like a  
mixture of 265 dirtied, plus extra buff sand.

270. Darkish grey.  
Slightly lumpy/silty heavily bedded with white  
and buff sand. Few beds of ch. cl.  
Rather like 234.

271. Whitish grey faintly iron-stained compacted sand  
as pebbled road — \* Seems also to occur  
between 194 + 195 (important) but I wouldn't  
be too sure of this as the section is messy with  
pebbles here.

272. Loose dirty dark grey brown sandy silt. Flecks of ch. cl.  
and tile. Under 163 was 16f

273 over 163 + 159  
Gritty very sandy light grey-brown with a few tiny  
mottled pebbles

274 Dark grey brown silty / sandy soil

275 Maybe continuation of 152 but it has developed into  
grey-brown sandy soil mainly thickened with small lumps  
of white mortar. Few tiny tile frags

276 Almost solid layer of tile frags + mortar lumps  
with some brown sandy.  
Could be 135 or extra layer with 277 = 135.

277. Brown sandy with tile frags + mortar pebbles  
Could = 134 or 135

---

NOS 278 - 289 PROBABLY PART OF PIT 130

278 Silty grayish black soil with tiny pebbles of ch. cl. and a  
few brown sand pebbles.  
= E in the pit?

279 Jet black silty soil with a lot of de. cl. pebbles.

280 Black ash + cinder

281 Yellow sand

282 Black soil

283 Solid lump + powdery bits of yellow mortar

284 Black soil

285 Reddish yellow soil ~ probably burnt

286 Yellow sand

287 Black soil

288 Faintly brownish-red black soil

289 Black soil with yellow mortar + brick bits

---

290 Tarry black soil

END OF EAST SECTION

## ORDER OF DRAWING

- ① Completed E. face of trench B
- ② Draw ditch layers below bottom } N SECTION  
road working from East to West }
- ③ Draw W. Section of N. extension
- ④ Draw layers between two roads in  
N. section working from West to East.

## MAIN NORTH SECTION (N. EXTENSION) CONT.

NOTE — Done in very dry conditions (see notes on excavating the ditch). Section drawn by spraying but it dries out very rapidly. Had to be done in short lengths (say 6" to 10' at a time) so never seen all at once.

Draw stuff below bottom road → bottom road →  
stuff between the two roads.

291. Basically TURF. Compacted by road passage?  
This is very hard and mid-grey to dark grey  
with a lot of charcoal pieces. Also contains an  
extremely large quantity of bones.  
Not solid turf. Rather a light turf — consists  
largely of dense turf peats, almost black, with  
a light admixture of sands which vary from  
brown to grey.

\* re. cutting TUVW —  
possibly this is a repetition of the turf proper  
in TU rather than the more sandy version which  
appeared in VW? Same because of bones?  
In quality (from memory) it is less lumpy than



16

the paper turf in TU but more turky than the sandy stuff in VW (though in fact it could equally be this). Its quality is about  $\frac{1}{2}$  way between the two. Probably all 3 could be put together as one deposit.

292 This varies from grey to brown. Largely a dirty greyish silty sand with varying brown sand streaking. Occasional charcoal, bones, and pebbles. Contains harder grey beds of silt or ? turf. This could possibly be the top "turf" in VW with 291 a repetition of the real turf in TU. Also some white sand beds.

293 Dirty whitish sand mixed with grey sand.

294 Mid grey to dark grey slightly silty/turky sand. White sand beds and 1 or 2 ch. l. beds.

295 ~~Thin~~ Thin hard surface of yellow-green cross-pan.

296 Slightly silty grey to fawn sandy.  
with sand pecks and a few ch. cl. pecks.  
Similar to 294.

297 Dark tea-leaf brown iron-pan. Seems to  
be staining on the surface of 298

298 Grey to grey-fawn slightly silty sandy  
with pecks of white and fawn sand.  
Similar to 296 + 294 which are a bit grayer  
and less fawn than 292

299 Rich brown organic material mixed with clean  
fawn sand.

300 Like 299 but with greater content of grey sand.  
Probably same deposit as 299?

18  
301 This has slight variations all the way along from grey to brown. However, generally it is cleanish pale grey or light brown sand distinguished by a content of large blocks and heavy beds of loose white sand. Occasional ch. d. pecks and a lot of pebbles.

302 TURF but not solid turf.  
Largely a dark grey turf but of a sandy texture or has an admixture of sands varying from brown to brown to grey all the way along, and some white pecks  
Generally looks dark grey with brownish brown.  
Lot of large ch. d. pecks, sparse rather than dense.  
Excavated as a deposit of the TURF GROUP

303 TURF  
This is proper turf, blackish, with a rubbery clayey solid texture. Sparse large ch. d. pecks. Some beds of white to brown sand.

304 TURF but not solid turf.  
 Largely sand with heavy dark grey turf pecking.  
 The sand varies from yellowy brown to grey-white.  
 occasional ch. cl. but very little.  
 Looks similar to 302  
 Excavated with TURF group

305 Similar to 304 but with a lower organic content.

306 An section, looks like heavy charcoal deposits mixed  
 with grey to white sand.  
 There are in fact patches of no 44 in N-S section  
 E3F3 = whitish "ashy" with ch. cl. & sampled  
 to see what it is.

307 Yellowy white to yellowy brown sand

308 Largely "dirty" off-white sand/silt.  
 Vari-colored deposit but basically a waxy pale  
 grey-white sand with various sand streaks of grey or yellow  
 or brown. Standing back, it's a fairly uniform  
 colour and of a dense smooth texture with no soil  
 content whatsoever. No ch. cl. etc.  
 WASH DEPOSIT OVER PRIMARY SILTS

309 Clean pale buff-yellow sand, pale grey sand,  
 some white sand. Some pebbles.  
 PRIMARY SILT

310 Clean coarse pale yellow rock wash with occasional  
 pebbles.  
 PRIMARY SILT

311 Hard dirty farm sand mixed with grey silt or turf.  
Fairly stained very green.

312 Similar 311 and probably a continuation of it

313 Dark grey silty sandy mixed with dirty farm  
sand. Few pecks of coarse buff or yellow sand.  
Occasional tiny ch. cl.  
? slightly lumpy.  
Could be continuation of 292. Similar texture  
not exactly so — more farm, slightly harder texture,  
less grey.

314 Dirty farm sand mixed with grey sandy.  
Some brown pecks + occasional ch. cl. — Fairly  
yellowy. More farm than 292 + 313

315 Crusty yellow-buff sand

316 Could be 294

Dark grey silty/sandy with occasional white sand  
beds

Slight waxy stain on surface some waxy beds,  
1 or 2 beds of ch. cl.

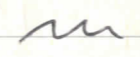
317 Trampled surface of hard crusty pale buff-yellow  
sand. Perhaps faintly un-stained.

Perforated Eastwards into un-stained surface/pan  
295

318 Like 317 and probably a continuation of it  
(though it could possibly be a continuation of 315.

319 Crusty pale buff-yellow sand like 315/317/318

320 Primary silt—  
Clean coarse orange-yellow sand / rockwash



321 PEBBLED ROAD (The "bottom" road)

Largely river-pebbles of varying sizes ~ occasional flint pebble also (flint with chalky grey-white outer "skin").

All pebbles mainly impregnated with ha-leaf brown iron-pan and dark green cyan. A lot of the pebbles have this iron-brown concretin all round.

Pebbles down fairly accurately.

Probably two contiguous surfaces as there seems to be one of smaller pebbles along the bottom — could equally be a single surface with two layers of pebbles laid originally. The larger pebbles tend to occur towards the top, though this could <sup>also</sup> be due to activity



on the road with pebbles being "sprayed" towards the edges by carts etc. (as here we are near the S. limit of the road.)

where the pebbles occur densely packed from 2' to 8' (lower datum, East half) on the section is an oblique section across the RUT which shows in the W. section and should show again in Trench B in 1971 drawings (N. of where it was re-excavated in '73)

\* 322 must be just STAINING of already existing layers - see note on 328 and strat. in area of the green barby pit.

322 Deposit under the road 321. This is very hard and compacted sand. Stained creamy green with thin patchy hard brown iron pan below the green. Occurs all the way along below the road. Seems largely to be a stained Pan sand, occasionally greyish.

Not possible to say if this is an extra layer deposited with the road or pre-existing layers merely stained - too stained to distinguish, and all the layers which may have been stained to this also have a content of Pan sand.

Continues into W. section as 483

25  
323. ~~Perhaps~~ Tramp of crusty yellow-buff sand  
with an admixture of fawn sand.  
Must be a continuation of 319

324. Hard beds of grey buff or sandy mixed with  
dirty fawn sand. Occasional beds of crusty  
buff-yellow sand and ch. d.  
Looks darkish grey with fawn and yellow  
beds.

Just like 313 and must be a continuation of it.

325 Tramp of crusty buff-yellow sand. Slight admixture  
of grey and fawn sand. Must be a continuation  
of 318 (which has a little bit on top of 326 under  
313)

NB.

From approx. below the central brick pillar — <sup>(going)</sup> (Westwards) —

301, the white bluish, gets more grey and less faun.

302 becomes progressively sandier — more faun sand in it — and less lumpy and less dull.

304 becomes grayer and more lumpy.

308 starts to become pale faun to pale grey rather than grayish off-white

Also 298 has localized slight variations

326 Thinly grey-faun sand.  
More faun than 324 + 298 + 313

327 Pale buff faun sand with faint orange + grey crustones.  
Clean.



328 Don't know if this is a root or a proper layer. Treated as a proper layer because the layers either side (324 + 329) are different.

Gritty sandy dark grey (almost black) turf / lumpy sand, with bits of charcoal.

\* It is possible (but uncertain, due to staining of 322) that this can be seen extending through 322 up to the pebbles of the road — if so, this would have to be seen as an intrusion (e.g. root-hole or stake-hole) from the level of the road.

329 Similar mixture to 324 BUT this is much paler in color and also much softer. Could well be a different layer from 324, depending on interpretation of 328.

This is a pale fine sand heavily packed with little bits of pale grey lumpy. One or two charcoal flecks. Half stained pale green by iron from the pit but its texture shows through.

\* This is probably cut by the pit, and under 322, though green stains up to the road pillars somewhat obscure the relationships. The pit is stained green, as are 329, 331, and 322.

There is possibly some indication of a collapsed sand edge partly intruding into the pit, but no attempt has been made to draw this as the staining makes it extremely unclear.

~~There is possibly some indication of a collapsed sand edge partly intruding into the pit, but no attempt has been made to draw this as the staining makes it extremely unclear.~~

28/

330 Tramples of coarse yellow-buff sand mixed with grey  
+/or fawn sand. Under 329 and 324 or 298

~~Probably continuation of 325 (and 318/317)~~  
~~Probably continuation of 325 (and 318/317)~~  
~~Probably continuation of 325 (and 318/317)~~

Probably continuation of 325 (and 318/317)

331 Much paler than 301 and slightly softer but  
otherwise very similar. Could be same layer —  
interesting how all layers get darker about here  
(but I'm sure there's NO REMT OF DITCH!!)

Pale fawn sand mixed with pale grey sand —  
lots and beds of loose white sand, and pebbles.

\* I wonder if there's been a hole or something here.  
From 9'6" to 11'6" on W.  $\frac{1}{2}$  of lower datum  
the whole area looks darker and a bit disturbed.  
Could be just due to the deposition of lenses  
here which is a bit odd.

I think lenses are OK as drawn — Certainly  
don't look a proper "edge" here and I'm  
pretty sure the ditch hasn't been re-cut.

332 Grey sandy pebbled with grey turf and white sand.  
Looks mid grey to dark grey with white pebbles and  
worms. Slightly better.

333 Clean fairly greyish pale brown sand.  
whitish sand pebbles and worms and a few  
ivory brown pebbles.  
1 or 2 big ch. d. pebbles and a few pebbles.

334 Rather similar to 332 but more lumpy and less  
white sand.

= Mid grey to dark grey sandy Mottled with  
grey lumpy and white sand. Few ch. d. pecks.

335 Dark grey turf family Mottled with white sand.  
More lumpy than 334

336 Dark grey-brown sand family Mottled with  
grey turf and white sand.

337 May be the stratigraphical equivalent of 302  
but not the same.

Mixture of pale grey turf and pale brown sand with  
a few yellow sand pecks and a few ch. d.  
pecks.

Could be termed turf Mottled with sand or vice  
versa.

More brown than 302 and the lumpy content  
is paler grey.

338 Pepper Turf

This is mid-grey to dark grey with a rubbery clayey organic texture.

In comparison with 303 it could be called "pale grey" — lacks the blackish quality of 303 and has less charcoal.

303 is over 338 as is clear from N-S sections, but the exact point of change is impossible to decide as there is a gradual shading from black to lighter grey.

Change is probably where drawn, but could be from 9'3" to 9'9" or  $W\frac{1}{2}$  of lower datum with 303 over 308.

<sup>303+</sup>  
338 Could really be the same layer and certainly it's probably all one deposit & couldn't really distinguish when digging. I think really we have one Turf deposit but over several seasons perhaps, giving the variations observed in the N-S sections.

338 has a greater sand content than 303 — Considerable pecking and streaks of yellow and fawn and white sand.



339 Turby whitish fawn sand = continuation of 304

340 Continuation of 308 but by this point it has become whitish fawn sand (there's a gradual shading of the content).

341 NOT same as 327.  
Clean pale whitish buff-fawn sand with very faint orange sand nodules.  
Probably PRIMARY SILT? or OVER P/S? See N-S section (perhaps).

342 Rather similar to 320 though not quite the same (probably same deposit, however).  
Pale clean mixture of sands - overall looks orangey grey - seems to be mixed (waxy) white + fawn + pale grey sands with streaks and lumps of coarse khaki orange sand (fawn nats.).  
P-silt.

This pit has a very hard rubbery compacted filling. Not entirely due to the underlying wood.

The fill is almost entirely organic matter or vegetation or excreta ~ referred to as "turk"

343 A bit like 342 but paler  
Largely fairly orangish, white sand with blacki-orange streaks + lumps (from rats.)  
P.S.



### GREEN TURKY PIT

{ PIT 458

Nos. 344

to 383 inclusive.

are in the pit

\* NB. ~ when 322 occurs over the pit it is unclear whether 322 is just stained pit layers — the dark turky quality could be regarded as staining through theussy, stained concretions of 322. However, it is not possible to distinguish the turf layers individually within 322, if indeed they exist. Consequently 322 has been regarded as a separate deposit underlying the pit. (460)

344 Hard rubbery black turf family tracked with yellow-brown sand, giving brown ashores.  
Sparse small d.d. pecks.

(687)

345 Like 344

688

346 Lenses of pale greenish grey sand (w? clay) ~  
Pieces of this underlie 345 separating it from  
other similar layers.

689

347 Dark grey-brown looking, mixed hwt and dirty  
faun sand. Ch. cl. pecks.

690

348 Black hwt pecked with dirty faun sand.  
Ch. cl. pecks.  
Similar 347. Shows 349 in two deposits

691

349 Solid rubbery black hwt only faunty sand-  
pecked. Sparse pecks of ch. cl.  
Must be two layers because of 348 but can't  
distinguish.

692

350 Coarse buff yellow sand (693)

351 Black turf packed with fawn sand - like 347 + 348 (694)

352 Solid rubbery brownish black turf. Only 1 or 2 tiny ch. cl. pecks. (695)

353 Brownish black turf heavily packed with yellowish white sand (696)

354 Blue grey sand packed with turf. (697)

355 Dirty fawn sand heavily packed with turf (698)

356 Black turf packed with fawn sand (699)

357 Black turf packed with pale blue-grey sand ch. cl. pecks. (700)

357A Small layer over 357 - black turf packed with fawn sand (number not on section) (701)

358 Dark grey-fawn sand heeled with black turf + ch. cl. (702)

359 Black turf heeled with fawn sand, stained family blue-grey (703)

360 Black turf heeled with yellowy fawn sand - stained family blue-grey (704)

361 Black turf heeled with ch. cl. + fawn sand (705)

362 Looks pale blue grey ~ stained admixture of sand + turf. (706)

363 Charcoal mixed with bits of black turf (707)

364 Green-stained turf mixed with fawn/white sand. sparse tiny ch. cl. pecks. (708)



365 Mixed hwt + yellow-brown sand stained to an orangey brown organic colour.

709

366 Solid rubbery black hwt faintly mottled with yellow-brown sand.  
Ch. cl. Necks.

710

367 Fairly greenish mixed hwt and sand stained <sup>pale</sup> greeny blue-grey.

711

368 Black / brown mixed hwt + sand. Faint white sand Necks. Sparse tiny ch. cl.

712

369 Solid rubbery black hwt with ch. cl. Necks

713

370 Like 367

714

371 Two indistinct deposits — (715)

Solid, rubbery, organic of a rich blackish  
scent-brown colour.

1 or 2 ch. d. Nicks.

Heavily infested with modern roots (like a fringe).

Only clearly two layers when separated by 372

371A Lower deposit of 371, under 372 (unless 372 regarded as lenses?) (716)

372 Like 370 — bluish grey sand etc. (717)

373 Solid rubbery black turf faintly nicked with  
brown sand (718)

374 Rubbery black turf nicked with ch. d.  
and faintly greenish blue-grey sand (719)

375 Looks pale blue-grey.  
Stained sand nicked with turf —  
few Nicks of ch. d. (720)

376 Fawn sand (721)

377 Grey-black horf mixed with fawn sand (722)

378 Fawn sand with organic brown stains & yellow sand necks. Faintly horf-mixed, and 1 or 2 ch. cl. necks. (723)

379 On pit bottom - thin black horf mixed with pale fawn sand (724)

380 Solid rusty black horf. 1 or 2 ch. cl. necks. Faint white sand necks. (725)

381 white sand with streaks of pale grey horf. Tiny necks of ch. cl. Stained pale green. (726)



382 On W. side & partly along pit bottom -  
grey loam mixed with fawn sand.

727

383 Mixed pale grey loam and fawn/white sand.  
Stained pale greenish grey. In 2 in. d. Reels.

728

End of pit layers

\* This pit shows indications of being truncated;  
though evidence is not conclusive.  
Could well have been truncated as there is  
some evidence in N-S sections of a  
cutting into ditch (+ pit) for the bottom road.  
If it has been truncated, this may have  
caused the partially collapsed E. edge  
noted above (see additional note following no. 329),  
but not drawn as the staining makes it unclear.

[ END OF PIT ]

TRENCH LAYERS, CONT. ....

Though not quite continuous, 338 occurs both sides of the pit.

I'm sure it's the same layer. An added factor in support is that 338 in this area has extra odd streaks of brick-pink clay which occurs both sides of the pit.

May be hard clay, but I doubt it.

384 Lens of grey turf bedded with farm sand. Similar coloring to 338 with extra farm sand and no charcoal

385 Must be strat. continuation of 339. Also turfy sand but not quite the same. Here it is farm sand heavily bedded with very pale grey clayey turf. Also heavily bedded with small dark brown wavy streaks.

386 Extra layer over 385 under 338  
Wet Wacky pale mixed sands — fawn/white/grey

387 Extra layer, but likely to belong with 339/385  
Probably a wacky fawn sand — bedded with  
light grey turf like 385 but more sand and  
less turf. Mostly stained pale green by iron from  
the pit

388 Clean pale fawn sand. Fairly whitish  
\* add to description when more exposed

? Equivalent of 340

389.

\* An examination the grey in 389 is in fact thin layers and beds of dark grey hard sand/silt, possibly slightly clayey, but NOT organic/turfy.

\* 390 and 388 are very alike and neither is quite like 340.

388 is the most likely strat. Equivalent of 340.

The extra layer of turf here, 389, is the problem.

389 NEW LAYER of TURF X NO - SEE OPP.

NOT TURF X This is light grey to mid-grey and paper turf - heavily interbedded with streaks of fine sand which does NOT consistently divide it into separate layers.

\* It's really thin layers of fine sand and blackish hard sand/silt in interlocking blocks. SEE OPPOSITE.

390 Fairly greyish pale fine sand. Many more beds towards E. limit.

This, instead of 388, could = 340? Extra layers this end.

Probably not = 340. If not, = primary silt.

391 Hard compacted pale fine sand with faint orange yellow sand textures

392 Primary silt, redeposited mat.

Hard streaks of coarse yellow and crusty khaki-orange sand. Pebbles.

Faint beds of white/grey sand.

Could have an equivalent Eastwards.

393

Looks darkish grey-fawn.

Admixture of fawn sand and bits of mid grey  
lumpy with sparse pebbles of ch. cl. ~ v. hard.

Could be described as lumpy mixed with fawn  
sand or vice versa.

Could be a repeat of 329/324 or 298.

Similar in texture to both 329 and 328 —  
in colour, it's between the two (difficult to  
tell as it's now rapidly drying out East of the pit)

394

Must be a continuation of 331.

Pale fawnish greyish fawn sand with pebbles and  
blots of white sand (though less blots than  
before). Pebbles. Cleanish.

395

Must be a repeat of 333 Pale greyish fawn sand  
with pebbles. This also has pebbles of white sand  
and 1 or 2 blots of white sand. Cleanish.

\* The distinction between 394 and 395 is not  
entirely clear though I think there's two layers  
here. Along the division is a line of small

45  
pebbles. Better layers are sand and predominantly  
pale fawn. However 394 has very faint streaks  
of yellow sand, while 395 has faint streaks  
of pale grey sand.

396 Most in a repeat of 385. Looks grey/fawn.  
Whitish fawn sand slightly mottled with pale grey  
clayey lumpy.

397. "Watery" — pale whitish fawn sand with  
strong streaks of pale orangey brown sand. Clean,  
with a few pebbles.

398 "Watery" — similar to 397 but paler.  
Very pale whitish fawn sand with streaks of  
pale orangey brown sand.

Primary silt?

399 Hard primary silt from natural washes.  
This is pale and a horizontally streaked  
mass of waxy yellow, pale pinkish white,  
and white sand.

400 Coarse gritty white sand.

THE BOTTOM ROAD, CONT.

could be just because of road activity — not two separately laid surfaces — see excav. notes.

Just W. of the hwy pit the road 321 splits into two surfaces with intervening stratification — elevation. The surfaces aren't separable, though in places it looks two surfaces because of different pebbles, i.e. those at the bottom embedded in sand tend to be smaller + more irregularly shaped with a lot of squarish or sharp-angled ones, with the upper pebbles generally larger, smoother, more rounded.

321 splits into 401 and 402 which are different surfaces of the same road.

401 Largish rounded smooth pebbles. Not very closely set. Upper road surface. Goes into W-section (pit — see W-section)

402 Sparingly set small irregular pebbles. Lower road surface. Larger round than. Goes into W-section (see W-section)

\* ALSO SEE W. SECTION WHERE THE ROAD SURFACES ARE EVEN MORE COMPLEX



The intervening layers, between 401 and 402,  
are . . . . .

403 Pale greenish grey clay sand with hard dark  
green clay specks and a few tiny ch. cl. pebbles  
↳ as in W section as 506

404 Hard dark green clay  
↳ as in W section as 507

405 Similar to 403 but slightly darker grey =  
fairly greenish mid-grey clay sand with hard  
dark green clasples and a few small  
ch. cl. pebbles.  
↳ as in W section as 508

The road East of this, where material  
occurs round the pebbles, it is similar to 403/405  
and/or dark green clay. Not possible to  
distinguish whether it's 403 or 405 with the  
rest of the pebbles.

↑ End of N. section from bottom road to  
 bottom of ditch — between roads to  
 do. ↓ Continued with bottom road +  
 ditch in W. section ↑



THE W. SECTION OF THE N. EXTENSION.

P.T.O.



413 Like 412 but with the addition of pinky white sand P-S

414 Pinky white sand mixed with brown orange sand P-S

415 Hard dark grey clayey silt with faint blue-grey streaks. Faint streaking of orange-brown sand and 1 or 2 black streaks of ? charcoal. Almost a clay or a turf. P-S

416 Hard washed redsp. natural. Mixed whitish yellow and brown orange sand. Similar to 410 and 411. P-S

417 Could be part of 416 but also contains pinky-white sand. Hard compact mixture similar to 416. P-S

418 Pale pinky white washed sand with a few streaks of brown orange sand. Has a faint smear of clayey 415 on top of it, not drawn in section P-S

419 Brown orange sand with pink-white sand streaks P-S

420 Coarse yellow sand with, bedded with orangey-brown sand. P-S

421 Clean coarse yellow sand from nat. P-S

422 Hard (extremely) rusty-brown coloured iron-pan P-S

423 Clean coarse white sand with irony-brown pebbles P-S

424 Coarse buff-white sand P-S

425 Coarse orangey-yellow sand from B-S P-S

426 Pinky-red sand with white sand nodules P-S

427 Looks a pale whitish grey - mixture of yellow sand, white sand, pink sand, grey-yellow sand - some irony brown pebbles P-S

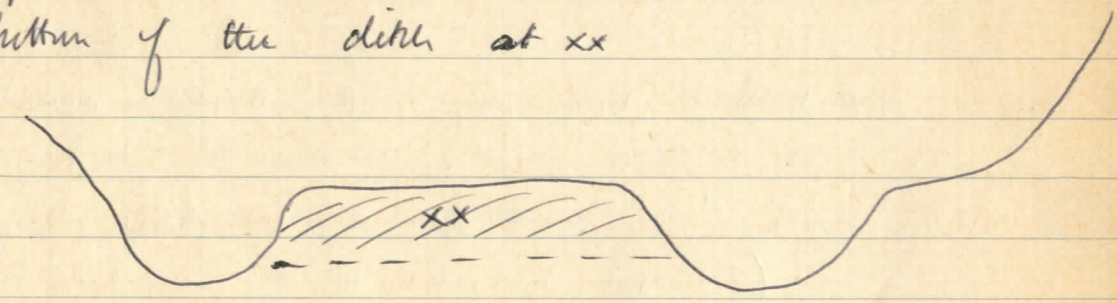
428 Soft shaly "organic" brown-grey sand bedded with yellow sand P-S  
(probably the softer nat. between hard orange-brown strata washed out here to be replaced by 428)

429 White sand bedded with pink + grey sand. Hard, waxy P-S

\* The stratification here is interesting. Suggests a possible "channel" and this may not be entirely due to nature washing. Although it isn't likely to be a cut channel as it stands because the layers N. of it are NOT natural, it may suggest drainage directed to this point by properly cut channels still surviving somewhere just West of here.

This is the only indication that the ditch may have had channels in the bottom which may well have totally eroded in the excavated areas ~~etc~~; East of here where the natural consists of softish yellows between harder orange bands, with frequent pockets of soft sand (white, pale whitish pink, pale ~~grey~~ banana yellow etc.).

Any soft nat. between a double channel in the bottom of the ditch at xx



would have eroded very quickly & washed down the W to E slope. The bottom of the ditch as excavated consists largely of one of the harder orange strata with underlying yellows showing through, but also includes approx.

with the level at which we are getting harder  
with beginning as opposed to the very soft  
sands / etc. of the BUNTER PEBBLE  
beds (as opposed to BUNTER SANDSTONE) in  
which most of the excavation is.

Numbering continued on section drawing.....

MTCH

- 430 Hard compact "waxy" pale whitish buff sand P-5
- 431 Loose coarse white sand, faintly yellowish, with  
lots of pebbles P-5
- 432 Compact wash from nat. of mixed, pale, pinky/  
whitely / yellow sands. P-5
- 433 Hard wash of yellow bedded brown-orange sand P-5
- 434 Hard compact mixed wash from nats. ~ largely  
yellow but with brown orange streaks and  
streaks. Several large pebbles. P-5
- 435 Hard wash from nats. Pale pinky-yellow with  
brown-orange streaks P-5
- 436 Soft coarse yellow sand faintly bedded with  
brown-orange sand P-5

- 437 Mixed wash from nats.  
Looks pale greyish pink with white veins —  
Bedded with white & brassy orange sand.  
Hard, smooth, compacted. P-S
- 438 Pale whitish pinky grey sand P-S
- 439 Coarse white sand P-S
- 440 Loose coarse white sand P-S
- 441 Hard pale whitish yellow sand from B-S P-S
- 442 Hard compacted wash from nats or mixed faintly  
greyish pinky orange sand plus a lens of  
clean yellow sand. P-S  
Appears in N-section as 392
- 443 Coarse white sand.  
Appears in N-section as 400 P-S
- 444 Hard pale mixed pinky-white sand. P-S  
Appears in N-section as 399
- 445 clean hard pale faintly whitish pinky brown to  
pinky buff sand P-S  
Appears in N-section as 398



446 Clean pale orangy brown sand.  
✓ To add to N. section } Added to N-section

P-5

447 Clean hard pale orangy-grey sand with  
whitish nodules

P-5

448 Discontinuous patches of dark grey clayey silt  
streaks + blobs in pale fanny orange sand  
Appears in N section as 389

P-5

449 V. pale orangy grey to orangy fann sand with  
beds of yellow + white sand.  
Appears in N-section as 397

P-5

450 Pale orangy-grey sand bedded with yellow +  
white sand. Some irony brown beds.  
Possibly fanny bedded with pale grey  
lumpy

P-5

451 Dirty white sand bedded with grey sand

P-5

452 Hard pale orangy-brown sand.

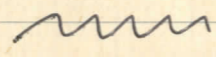
P-5

453 Compacted hard coarse wash of yellow sand  
from b-s ~ beds + lenses of fanny orange  
sand. Some pale whitish grey sand streaks

P-5

END OF PRIMARY SILTS

(Though it's difficult to say exactly which are P-S here, as a few layers are atypical. Problem is the intervention of 453 — otherwise 451 + 450 + ? 449 are more like the off-white sand with which occurs over the P-S elsewhere. 448 is also unusual; a dark grey. Clayey silt A15 appears elsewhere in N-S section)



Between here and the top are the off-white sand masses which occur throughout over the P-S under the group of beds.....  
(except for 454, which is atypical!)

- 454 Slightly purty dark grey sandy with brown sand pecks. Two pecks in 453.
- 455 Faintly greyish, whitish-fawn sand. 1 or 2 ch. cl. pecks (tiny)
- 456 Whitish sand with grey-fawn veerings
- 457 Whitish-fawn sand with light grey veerings
- 458 Basically grey-white sand, but heavily pecked with pale grey-brown pecks with yellow veerings and some richer brown pecks. Probably con + for

organic material.

459 This is the dirty faintly grayish off-white sand with various pebbles which occurs over P-5 throughout most of N section (no. ) and throughout the N extension.

Here it is bedded with grey, yellowy-orange, and brown - all faint pebbles. Also minute sparse pebbles of ch. cl.

460 Mid-grey faintly bedded sand. 1 ch. cl. pebble.

461 Coarse white sand with grey sand nodules

462 Sand (? off-white) bedded with mid-grey horfy. Continues into N-section as 396

463 = 338 in N-section

TURF GROUP

463 Followed through from N-section.

On this section it becomes darker + more solid horf. = blackish grey rubbery-textured organic / horfy with charcoal pebbles. Faintly bedded with sand.

464 Could well be a repeat of from N-section.

On this section, very similar to 463, but the two are separated by (undrawn) a thin streak + occasional small lenses of yellowy white sand.

= blackish-grey rubbery-textured turf / organic material with charcoal flecks. Fairly sand mixed. Also includes some dark grey slit-brown organic material.

\* POT SHARD (514D) is below 464 on the surface of 463. This is R-B (but similar to Midland P!). Possibly another sherd of the pot found below the turfs further ~~west~~ East in section E3 F3. (Planned min). This is just a body sherd.

465 Blackish grey turf but heavily <sup>mixed</sup> with brownish sand. Sparse minute flecks of charcoal. Does this belong to turf group? Similar layer occurs in this position over black turf in N-S section walking East from here.

466 Similar 465 and possibly same layer. Purer than 464/463. Grey turf mixed with brown and tan sand. Doesn't occur in N-section in the immediate vicinity. (terminates at N. side of W. section)

467 This is paler than 465 and looks mid  
grey with white veins and darker grey  
beds.

= basically a grey sand bedded with white  
sand and sparse beds of grey turfy.  
Could be called "turfy grey sand".

468 Also turf sand & similar to 467, but with  
an additional content of pale brown sand  
lenticles into N. section  
(TO ADD TO N. SECTION) ✓ ADDED TO N-SECTION

469 This looks organic brown heavily bedded with  
white.

= basically grey-brown sand heavily bedded or  
mixed with rich brown organic material. Beds +  
beds of white sand and a few beds of  
charcoal

(there's similar stuff in N. section towards Trench B  
but unrelated stratigraphically)

470 Streak of white sand. Must continue 469  
which ends in a white sand streak.  
Don't go into N. section. (communicate here at N. end  
of W. section)

NB There's NO GULLY with the  
lower road here. This scale section  
supersedes ANYTHING previously drawn  
(i.e. Section GH in earlier sketches)

471 Fairly firm, grey sand to sandy, possibly a bit  
lumpy. Faint white sand flecks giving a whitish-firm  
appearance. Sparse tiny ch. cl. Pebbles.

472. Dirty white sand mixed with firm sand +  
grey sandy.

473 Slightly firmish, grey sand to sandy, possibly a  
bit lumpy. A few ch. cl. Pebbles. Darker than 471  
as it lacks white sand but otherwise very  
similar.

474 Firm sand with grey sandy textures. Sparse  
tiny ch. cl. Faint flecking of white sand and  
some white sand blobs towards N. limit.  
Might be 475.

475 Slightly greyish, firm sand with pebbles and  
tiny blobs of white sand.  
Continues into N. section as 395 where it  
gets cleaner and more firm.  
Pebbles.

476 Slightly yellowy, firm sand. Slightly flecked  
with grey sandy. White sand textures.  
Similar to 475 but a bit less grey + more  
firm. Could be same deposit. Continues (just) into  
N-section where it terminates.  
TO ADD TO N SECTION ✓ ADDED TO N-Section

477 Clean fine sand mixed with white sand.  
occasional ch. d.

Continues into N. section as 394 = fine sand  
with white lites, + pebbles.

477/476/475 are very similar. Only  
slight colour variations.

478. Could = 477

Fine sand mixed with white sand + grey sandy.  
Fairly yellowish. Sparse tiny ch. d.  
Paler + more fine than above + below.

479 Seems to be all one layer, particularly from a  
distance. Bit mixed, but can't make separate  
layers of it. Possibly road panning has induced the  
odd shape?

Looks dark grey fine + mixed dirty fine sand  
and little bits + streaks of mid-grey silty or  
lumpy. For 2 hours.

Continues into N. section as 393

\*NB.

There's a faint, slightly harder, green clay-stain on top of 482 which starts at "apex" of 481 and continues southwards about 6". This probably appears to be in this. Also means there was a surface along the top of 482.

480 Dark grey turf faintly mixed with brown/fair sand. Large ch. cl. pecks.

\* Almost a "surface" on 480/479/478 South of the mt.

481 Very hard mixed fair sand and blackish turf. Ch. cl. pecks 1 hour. 2 or 3 tiny pebbles. Faintly stained green very. Much darker than 479 but paler than 482

\* ← 482 Hard blackish turf with fair sand veins due to a content of sparse small bits of fair sand, and fair sand pecks. Sparse minute pecks of ch. cl. one or two often have frags. { COULD THIS BE THE BONEY TURF TO EAST (TOP OF DITCH FILL)

\* Seems to be a surface on 481 + 482

\* Could almost put 480/481/482 as one turf deposit.

\* POT (533) ~~is~~ on surface of 482 but embedded in it. ? splashed water when removed after draining layers above it.



used different nos. for part of W-section  
and N section (same layers) as it was  
too windy to open sheet of paper to  
correlate when drawn.

Any layers found in W-section but unmarked previously  
in N section were added to N-section after  
re-examining the section.

This section will have to supersede all others (GH)  
and will have to be reconciled with excavations  
at Res.

I'm not entirely happy about it as a lot of the  
differences are minimal — in many cases you could draw  
anything you wanted! It's a blunder very hard  
sandy section badly scored by worms and a  
number of roots, and most layers have minute pebbles which  
come out and score the section when tumbled.

This section is always in an awkward light. Soaked out  
layers after thorough soaking with spray, drew the lines  
when dry (section dries out very rapidly indeed),  
then sprayed again for descriptions, but this tends to blur  
layers as a sandy film forms from washed-out sand grains  
hence getting me sprays.

Studied it very carefully — I think the final version  
is OK — certainly for most of the crucial points  
(This bit of section took 3 days!)

Cl 14/5/74

483. Farm sand stained green very — likely  
Meds — continues into N-section as 322.

~~Done~~

Adaptations to N-section + nos to add

Chippin + grad (s)

above road

WEST SECTION BETWEEN ROADS

NBS 484 TO 523 INCLUSIVE.

~~484~~ The basic colour of all this part of the section  
is very dark grey — almost blackish — with brown  
mottles small.

Apart from reddish streaks, the colour differences  
are minimal, and textural differences slight.

Otherwise, differences are due to whitish or brownish  
sand admixtures, charcoal flecks, etc, or turf.

484 Comparatively light brown. Very sandy soil with  
flecks + bits of b/s and sherry. Occasional streaks  
of red clay + charcoal. Indistinct from 485  
except towards S. North.

Could end under 97 just South of the drawn line —  
dotted part could be 485.

probably = 524 in N-section?

485. Brown sandy soil darker than 484 but paler than 486.  
Peculiar with grey sandy/silty and charcoal.  
probably = 527 in N section.

486. Softer and darker than 485.  
Silty grey to grey brown soil with quite a lot of  
charcoal pieces. = 529 in N section

\* 484/485/486 are very similar stuff. Slight changes  
from grey to brown and from soft to hardish (working  
from bottom of 486 upwards.

487. Patch of red clay. Continues to South as pieces of  
red clay over 488.

488. Dark grey silty/sandy. Sparse tiny charcoal pieces,  
textures of brown/white sand. Similar 486 in  
color but harder and less charcoal.  
Contains a lens of dirty white sand at N. end.

489. Very hard brown/grey sandy, paler & harder than 488.  
Charcoal pieces and small blobs of brown sand.  
Reddish textures from pieces of red clay and red-brown  
sandy soil. Occurrences of yellow sand and small  
stone pieces (probably sk.)  
= 531 in N. section

490. Quite distinct, and. red to red-brown overall.  
A mixture of brown sandy, red clay, red brown sand,  
and yellow sand/b-s. Sparse tiny ch. cl.  
Bits of b-s. (Goes into N-section as 533)

491 Brown sandy bedded with grey horby. Faint whitish  
overturn + occasional ch. cl.

492 Rubbery blackish buff faintly bedded with brown sandy (540)  
Few charcoal beds towards the top.

493 looks a "whitish brown".  
= Grey-brown sandy with a lighter texture of  
whitish brown sand. Faint beds of grey sandy or horby,  
and 1 or 2 ch. cl. Similar to 491 in texture, but "whiter".

494 Very similar to 491. Grey-brown sandy bedded  
with grey horby. Faint beds of whitish sand, sparse  
beds of ch. cl.

495 Comparatively whitish and sandier.  
Mixed dark grey sandy and whitish sand.

496 Has a hard surface as it which is faintly  
clay + carbonaceous partly over soil.  
Dark grey silty/sandy, slightly horby, with faint whitish  
sand beds. Lot of charcoal beds.  
Goes into N section as 535 (terminates)

497 Equal mixture of blackish lumpy and brown-white sandy. Few bits of sh., sparse tiny pieces of red clay, a few pieces of charcoal.

498 Comparatively sandy + loose. Paler layer (comparatively) sandwiched between 2 dark greys.  
= brown-grey sandy with paler brown arciforms.  
A few pieces of lumpy and some bits of lfs.

499. Similar to 497. Mixed blackish lumpy and brown-white sandy

500. Distinctive. Dark whitish-grey sand flecked with white sand. Distinctive pieces and small clumps of khaki-orange clay (? could be organic (shit)) occasional tiny pebbles and minute charcoal pieces  
\* THIS COULD = 501

501 Similar 500. Dark whitish-grey sandy flecked with white sand and darker grey sand. Distinctive tiny pieces of khaki-orange clay.

502 Dark grey silty/sandy with white sand arciforms. Occasional minute sh. cl. pieces.  
"whiter" than below and "whiter" than 501 with no khaki-orange clay.

- 503 Distinctly whitish.  
Whitish-brown sand with occasional streaks of grey  
sandy / lumpy.
- 504 Comparatively "whitish" but darker than 503.  
Abundance of bits of dark grey sandy and/or  
lumpy and whitish sand. 1 or 2 ch. d. pebbles.
- 505 Whitish-grey sand (occurs on both sides of the larger pebbles)
- 506 Mid-grey to light grey clay sand. Dark brownish-green  
con - pebbles + a few tiny ch. d. pebbles.
507. Hard dark brownish-green claspans (worn)
- 508 Darker than 506.  
Mid grey to dark grey clay sand. Brownish-green  
clay pebbles and absolutely minute charcoal streaks.
- 509 Like 506, paler than 508.  
Mid-grey to light grey clay sand with brownish  
green con - pebbles.
- 510 Like 508, darker than 509.  
Mid grey to dark grey clay sand. Brownish  
green con - pebbles. Occasional tiny charcoal.  
Also contains a few pebbles of blackish lumpy.

NOTE

\* The area where —

510 - 511 - 512 - 513 - 514 - 516 - 518

most is not entirely clear. There was a large wormhole here, and though I cut back the section (into a hollow) it's still not as clear as it might be. \*I think it's OK as drawn, though there's no clear change from clay layers to others — rather there's a sort of merging effect, probably due to percolation of clay liquids during use of the wads.

511 Reddish blackish grey lumpy, highly bedded with whitish brown sand. A few charcoal flecks and some pebbles.

512 Slightly grey grey sand. Paler than 510 + 513 as it has white sand flecks. Occasional flecks of grey lumpy and tiny ch.d.

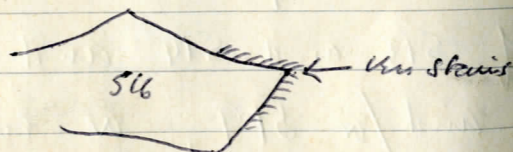
513 Dark grey clay sand. Brown green clay flecks. Just like 508

514 Whitish grey sand — similar 512

515 Blackish grey lumpy. Faint flecks of white sand — more sandy towards N end. Occasional charcoal flecks + 1 or 2 flecks of red clay. More lumpy than 519 (slightly), less lumpy than 520

539

516 Comparatively whitish — brown-white sand, bedded with white sand, with occasional flecks of grey lumpy and 1 or 2 ch.d. — the N. apex has brown green clay stains (not drawn) ...



which seem to define this layer re. 514 and 518

GENERAL NOTE ON W. SECTION

THE ROAD(S)

Pebble surfaces (not numbered on this section) are as drawn, and accurately measured etc.

Interlocking in that they indicate several surfaces, though this could be due to overspill at the side of the road, and for the mt.

The earliest road surface (small irregular pebbles in N. section) seems to go with bottom pebbles in the mt (under 518 over 521) which looks to go with a surface on 481 and 482. 481 is probably con-stained by this and the stain spreads a bit along the top of 482. This means 520 must be a hoof accumulation (plant-growth?) at the side of the road.

The bottom pebbles in the mt probably have 2 surfaces — the second being over 518. The level of these could still go with 520 OR on top of 516 + 515.

The pebbles over 517 also split into two — the lower must go with a level either along the top of 513 and 514 and 516 and the top of 520 and/or 519, or even along the top of 515.

PTO

517 Lightish grey very sandy with honey green con-Necks. Rather like 508, plus extra faint Necks of white sand. For 2 d.c. Necks and for 2 honey brown Necks.

518 Darkish grey very sandy with honey-green con-Necks. For 2 d.c. Necks. Like 513 and 508

519 Blackish grey turf Necks with honey white sand. Slightly paler than 515, noticeably paler than 520, and slightly sandier than mt.

538

520 Solid rubbery blackish turf. Sparse charcoal Necks. Only faintly Necked with sand. SURFACE below it, with a faint con-stain (partial — see 482). For 2 bits of bone.

537

\* 520 CAN'T be the top honey turf of ditch fill as this was under the road. 520 I think goes with the road — must go with the first road surface as organic accumulation at roadside — could be organically slit and/or plant growth, probably the latter.

The upper part of the pebbles go over 510 — the level from there must be over 510 and 511 and along 515 (the top of).

The LATEST pebble surface (from the N. section) shows only 3 pebbles in this section, on top of 506. The level for these would certainly (probably) over 508 and 509, over/under 505, over 510 + 511, along the top of 515.

In general, this shows a road in use for some time. Though probably not laid separate surfaces (or at the most, two separately laid surfaces, see N. section), the surface has got separated by being sprayed upwards from carts etc., to give separate surfaces indicated with increasing stratification of the deposits at the side of the road.

Must have been plant growth at the road side — probably a sort of grassy bank with growing things. How long would a layer such as 520 take to accumulate?

I wonder to what extent this was used as a track above the pebble surfaces (i.e. in situ)?

Latest definite use would be with pebbles over 506 etc. Looks like silt over that then brilly churning then the new road (as 97 in this section).

521 Light fine sand — not very and no sil content. V. hard

522 Hard fine sand. Pale grey necks of sand (or why?)

523 Hard green clay. Interstratified but can't distinguish. Looks to be stained fine sand. The lower part seems to have faint iron-pan also, below it.

↑ END ↑

POTTERY TAKEN FROM THE WEST SECTION BETWEEN THE ROADS —

GREAT NOS.

533 Shard under 520 on surface of 482 (section nos.). Should date 1st. road. Potted on section. Sandy red fabric, reduced inner surface. ??? a splashed ware.

534 Tile frag. in no 501.



(535) Small sword in no. 492  
Morphology splashed ware.

(536) Small sword or tile frag in pebbles just above  
no 517

TURF SAMPLES TAKEN FROM ~~WEST~~ WEST  
SECTION FOR ANALYSIS (pollen etc.)

(537) turf no. 520

(538) turf no. 519

(539) turf no. 515

(540) turf no 492

SOME STRAT NOS.

ALSO IN  
BOOK 9B

(541) onwards.

SECTIONS CONT. IN  
BOOK 9B