

NOTTINGHAM 1973

FISHER GATE

**FG 73**

SITE NOTEBOOK 13

AREA H

FG. 73

AREA H.

CONT. FROM BOOK 12

NEXT STRAT. NUMBER  
TO USE = (470)

62

12

\* GENERAL NOTE

Having looked at layers both sides of the B/S wall (ditch filling) it is not possible to relate them in detail with any certainty. Particularly difficult as they are now drying out at varying rates (wind etc.)

Anyway, they will have to be excavated separately. One main point seems fairly clear — that is, all <sup>or nearly all</sup> the layers S. of the B/S wall (particularly in area JKLM — have not yet examined in detail East of the walls) belong to the group of dark grey and brown in the "re-cut" apparent in section E<sub>2</sub>F<sub>2</sub>.

This means, if the re-cut exists, it includes all the S. side of the ditch except possibly for 1 or 2 layers (if so, should be apparent in section, but for certainty of kinds all the layers S. of the wall will have to be treated as in re-cut). The re-cut will have to go NE. from E<sub>2</sub>F<sub>2</sub> as it should include all the layers down to r including the black turf in cutting TUV.

TURNS\* are now excavating that part of the re-cut N. of the B/S wall to examine in detail.

\* Paul +  
Kevin  
Blockley

SECTIONS, CONT.

[see sketch plan]

See also

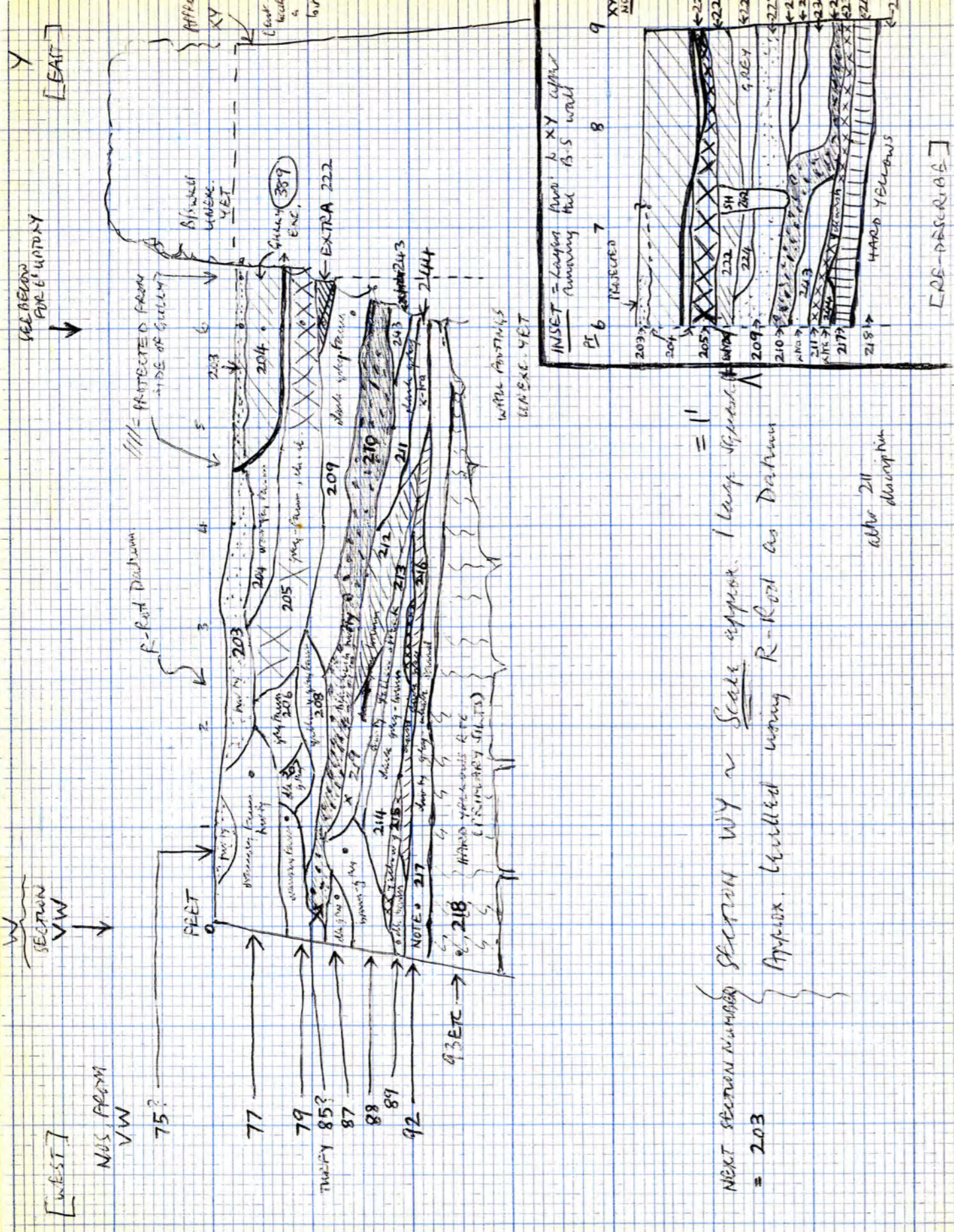
SECTION WY

(= N. side of B/S wall  
Mud. — joins section VW to  
1971 trench B)

Nos. continued through directly from VW =  
77 / 79 / 87 / 88 / 89 / 92 / 93 etc.

possibly 75 / 85

PTD



SECTION NOS ONLY

(layers in WY)

- 203 Dark grey lumpy mixed with brown sand. Ch. cl. + brown. Probably = 75 from VW SEE NOTE OVER LEAF
- 204 Dirty brown sand, fairly sandy, with lumpy bits, brown, + ch. cl. - but lumpy than 203. NOT as sandy as 77 but similar texture. Could be same layer. SEE NOTE OVER LEAF
- 205 Dirty admixture of grey + brown sand with charcoal bits. Slight lumpy streaks but probably wrong. Greyer than 204/206 = 221 in XY
- 206 Brown sand, slightly grey sand mixed. Lighter + more brown than 205
- 207 Dirty dark grey slightly clayey/lumpy sand
- 208 Has a light yellowish-brown tinge = brown sand slightly mixed with grey sand-(y)

NOTE ON 20<sup>3</sup> (after running 6/5 wall)

Can't show 20<sup>3</sup> through to section XY because of feature.

However, as there's a honey surface (see XY) it's possible it was North and is either 225 or ON 225 but not showing in section.

Maybe from 1'6" mark on XY and was 223/224/226 upto N section as honey surface not showing in section.

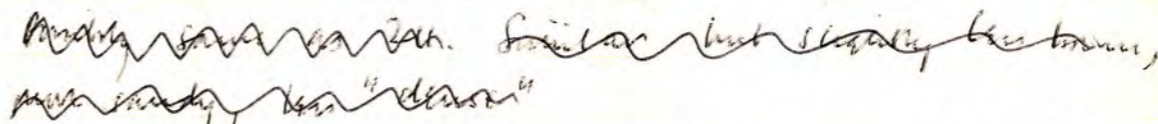
NOTE ON 204

Not visible in section XY. However from surface on bottom of "feature" there's a dark strip extending about 6" back from section. Possibly 204 exists in "hollow" upto about 6" mark on section XY and in thin uneven layer was 221.

209 Looks dark grey with pale grey/fawn bedding = admixture of dark grey sand and (slight) fawn sand with sparse streaks of ch. d. = 229 in XY

210 Dark bluish grey definitely heavy/organic layers - slight admixture of grey // fawn sand. Fairly dense, large ch. d. pebbles / seams. Clayey texture. Could well be 85 in VW = 237 in XY

211 Dark dirty dense grey (clayey?) sand with dark brown sand streaking. 2 or 3 large ch. d. pebbles towards the top. Looks yellow grey = admixture yellow + grey sand. Fairly heavy with 1 or 2 ch. d. pebbles. Lots yellow E. washes = 238 in XY when it's quite yellow.

212  Similar but slightly less brown, more sandy than "darker" layer. Looks grey yellow = dirty dense dark grey sand (y) with yellow sand pebbles. Could be 224 but is less dense.

→ 219 Fawn sand with slight orangey / greyish weathering. Not greyer than 88

213 Speckle of dirty yellowish white sand mixed with grey sand.

214 Slightly massive dark grey/taupe sand  
gets grayer W. to E.

215 Strata of dirty yellow-white sand with slight  
grey/taupe sand admixture. Similar 213 but  
more yellow & slightly "crusty".

216 Hard very dark grey sand. ?? lumpy (don't think so)

217 This is probably G2 from VW Basically a  
dirty pale grey/white sand - however, in this  
section it has faint markings of waxy or  
yellowy sand within. All one layer?  
~~331 in XY~~ = 331 in XY

218 Hard drab crumbly yellowy / pinky yellowy/  
orange yellowy. Several layers, not drawn except  
in VW etc.  
Primary salts = redeposited salts,  
~~331 in XY~~ = 331 in XY  
← various layers in XY

219 See above

END OF WY except for joining to Mand. B  
when B's wall fully removed.

SEE ALSO SECTION 2U WHERE THESE LAYERS SHOW E-W IN N. SIDE OF B/S WALL TRENCH

EXCAVATION, CONT (TWINS)

[North of B/S wall only]

\* Excavating section E<sub>2</sub>F<sub>2</sub> eastwards to another (Temporary) N-S section parallel to E<sub>2</sub>F<sub>2</sub> and 3' 9" East of it.

Trying to follow the edge of the "Reat" shown in section. ....

(470) / (471) / (472)

all carefully trowelled out.

(470)

Layer no. 2 in section E<sub>2</sub>F<sub>2</sub>, hard blackish turf with a lot of bruss.

This seems to go to a ~~continuous~~ good edge, as in section. Fills the whole top of the "feature" in E-W strip, i.e. it's a continuous layer E-W.

Seems to overlap the edge towards the next section. .... N S



which will be an important point re. the "cutting" for the road.

Probably overlap to be noted in detail when next section examined.

Contents Bruses (largely cuts, lots of joints) very decayed + in fragmentary state

part of { 1 unroaded (mainly) R-B rim  
1 worse sheet





\* NB. Also took out some no.  
9 which is over 472  
in section 24, North side  
of B-S wall trench.  
No fossils in this but should  
appear as a layer in  
the new temporary section.

(471)

Layer no. 3 in  $E_2F_2$   
Turky mixed with orange/fawn sand.

This goes to good clean fawn edge all the  
way along, as in section  $E_2F_2$

Contents

1 large piece of R.B. tile!! (cf Tamworth)

Lots of bones as in (470)

(472)

Layers nos. 162 + 11 in  $E_2F_2$

Taken out together as one layer as  
can't follow difference in area.

Very similar.

Goes to clean fawn all the way along  
E-W ~ this will be either no. 163 from  $E_2F_2$   
or the clean fawn edge

[\* TWINS THOUGHT EDGE A BIT CONFUSING  
TOWARDS NEW SECTION - SEEMS TO BE EXTRA  
CLEAN ORANGEY FAWN LAYER AT/BY THE EDGE,  
WITH ROYAL BROWN FLECKS]

check  
this

Contents

Five decayed bones  
1 pint flask (waste or? natural)  
1 tin shell in gritty black

AS FAR AS TWINS WANT 2/2/74

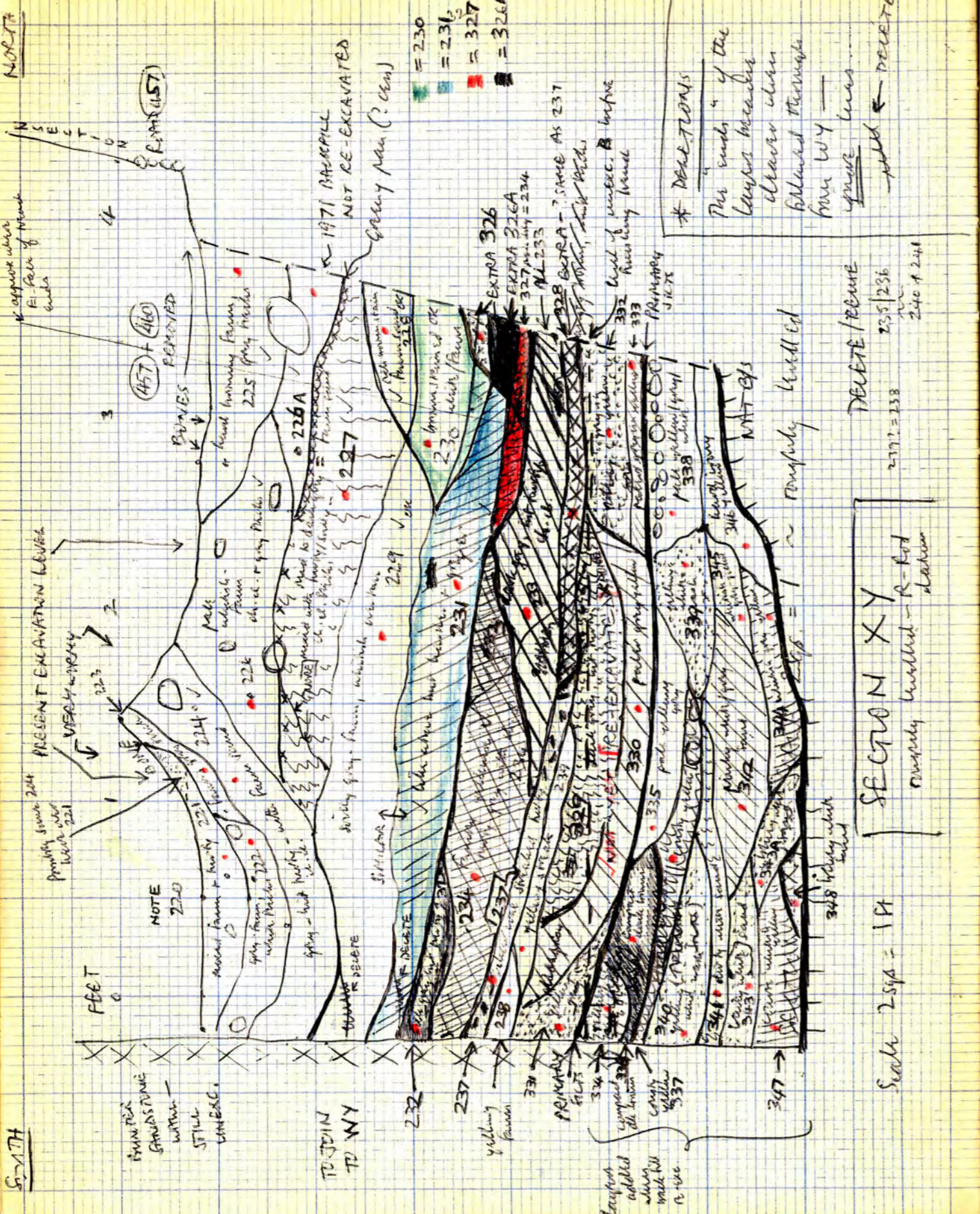
\* IMPORTANT GENERAL NOTE

North Extension, North of B/S wall trench

All the decayed BONES seem not to be restricted to layers (470) / (471) at all, but to belong to a general tip of BONES which seems to occur at an general LEVEL and spread over a number of layers.

This honey surface is visible all over the dike filling after the removal of pebbled road (457) and the underlying hard green clay (460), though of course the honey level was partly exposed previously South of the road.

Is it really a honey level or just that all exposed layers happen perchance to contain bones?



SECTIONS CONT.

THIS IS FINAL VERSION AND SUPERSEDES ANY PREVIOUSLY DRAWN (EG. IN 1971, AND BOOK II WHICH WAS OK ONLY DOWN TO THIS LEVEL

\* Revised version of SECTION XY (= W. Face of 1971 March B) resulting cut back a further few inches.  
 See opposite — NOTE THERE'S NO "LOWER" Gully

Numerical sequence cont. from WY (can't follow layers thru' yet). Drawn + numbered layer running cut bit of B/S wall, so after removal + following layers thru' from WY some layers will have 2 numbers [i.e. some layers in WY + XY]  
 I'm not sure what's come out here. Check, but I think ....

- A. Largely it was the excavated feature (slot) which came from a higher level (not too wide)
- B. Partly misexcavation by our looking for edge of lower gully (see drawings) which does NOT exist!!
- C. ?? ~ check notes — possibly some of GY's group of yellow layers S. of the road (457)

- 221 Block of grey loam with admixture of whitish fawn sand and sparse pebbles of ch. d. — looks grey with fawn pebbles overall. = 205 from ~~WY~~ WY
- 222 Not all that different from 221 but less heavy. Fawn sand with a few heavy pebbles and whitish sand and some sparse pebbles of ch. d.

\* SECTION XY CORRELATED TO EAST FACE OF TRENCH (SCALE N. SECTION ON PAPER 3 IN NOTEBOOK 9A

223 Fairly brown sand with a lot of grey lumpy/clayey pebbles. No ch.d. Looks grey with brown carbon. 222 is "white" in comparison

224 Looks grey with various streaks & pebbles. Fairly hard. Largely a grey silty / lumpy layer but still very sandy. Small sparse ch.d. Patches of brown & whitish brown sand - possibly from vegetation as it has lighter streaks over 226 than over 229. Much darker, softer & lumper than 226

225 Hard brown sand with a lot of lumpy pebbles & some ch.d. Pores in surface. Could it be lumpy with bones from VW? \* 225 is actually like 226 & could be same stuff

226 Fairly pale & a lot of whitish in this but heavily streaked with brown, possibly the cause of several near vertical lumpy streaks. Basically a light brown sand with whitish sand between and a scatter of ch.d. pebbles. Hard, coarse, gritty.

← 226A

227 Looks generally greyish with brown carbon. = sandy grey silty or lumpy with a slight admixture of greyish to brown sand. Few large pebbles of ch.d. - rather similar to 224.

Add

226A - very like 226 in texture (much harder & grittier than below) but with a darkish grey sand slight admixture. Separated from 227 by a grey hard ~~thin~~ pan "surface" which also survives in an attenuated form under 226.

Addendum to 227

There is a thin roughly similar mixture all the way along under 224 which could be interpreted as a continuation of 227, or as a weathered in version of 227 which is a context of 224. I've drawn it as the latter.

[Added after removing the rest of the 1971 backfill, thereby  
bettering the bench. Also included slight revision of the  
section as some layers became clearer - drawing lines  
already been altered). Revision included deletion of nos. 235/236/240/241  
mm

326. Clean pale light fawn sand with an admixture of whitish sand.  
Separated from 230 by a streak/blobs of almost white sand.  
? could be part of 230. More fawn than 326A.

~~326A~~ ~~Being part of 326 but some darker~~ ~~As 326 but~~  
~~has streaks and with some content of mid-grey sand.~~

326A Looks fawnish mid-grey to light grey = admixture of  
fawn + light grey sand with faint white sand flecks.  
could put 326 with this or with 230. Thought it's slightly  
more akin to the latter. Different from 231 as it's  
more pure sand, lacking 231's silt content. Also lighter  
colour. However there's a slight "mixing" and it's difficult  
to say if 326A is over or under 231. I think 231  
is "over" 326A.

327. This is possibly a continuation of 234 but is less lumpy  
This is slightly lumpy mid-grey sand with sparse  
flecks of charcoal (like 234) but lots of charcoal.  
This is slightly yellowish, but has an admixture  
of fawn sand rather than the yellow fawn of 234.  
Similar (but slightly sandier) texture to 234.  
Gets sandier N-wards and could well appear eventually  
in N. section as a fawn-banded mid-grey sand to  
sandy.

328 This could be the same as 237. It's dark lumpy band.  
Dark grey lumpy with some large bits of charcoal. This is more  
lumpy than 233. However, less lumpy than 237 (slightly) with  
much less charcoal. Slight content of fawn to yellow sand.  
At the "junction" of 328 + 237 we could put 328 "over"  
or "under" 237. PTD

228 Difficult to see what's happening here as there's a  
rich silt-brown stain which starts in 227 + runs through  
228 + 230

Seems to be a brown stained mixed fawn sand +  
grey sandy (or lumpy?) with faint whitish streaks.  
Paler than 227, darker than 230. As a deposit,  
more akin to 230.

LATER \* It's only a whitish stain on later drawing. OK as  
drawn = dark brown, fawn sand mixed with white  
sand and grey sand. Similar 230 but darker

229 Has distinct whitish streaks. Seems an even  
admixture of grey sandy + whitish fawn sand with tiny  
occasional ch. cl.

Looks a very whitish grey-brown. Paler than 231  
but similar texture.

= 209 in WY

230 Brown-stained.  
Looks as though it was a light whitish fawn sand  
with blobs of white sand. Very soft.

(? = layers with white blobs in cutting, TUVW in N. section)  
LATER \* only slight stain, OK as drawn = rich brown fawn sand with  
admixture of whitish sand.

231 Similar to 229 but darker grey with less white streaks.  
Looks greyish overall. Siltly sand.  
= smooth mixture of sand + silt fully integrated.

329. Looks mid-grey to dark grey with yellow + brown textures.  
= very, very slightly lumpy or lilly mid-grey to dark grey sand / silt, lightly bedded with yellow brown sand. 2 or 3 large charcoal flecks. Darker grey than underlying layer.

330 lighter than 329, with white sand textures. Similar textures. Mid-grey to dark grey sand with faint yellow textures and admixture of whitish sand. Slight lilly admixture.

331 Similar 330 but slightly paler and with a lot more yellow sand.  
Looks darkish grey / yellow. Fairly whitish.  
= 217 in WY

\* Nos 329 330 331 are very similar sort of layers and could be regarded as one deposit.

? Primary silts 332 + 333

332 Fairly clean rather yellowish brown fine sand with slight grey sand admixture and faint flecks of whitish brown sand.

333 Similar 332 but slightly paler + softer. Fairly clean rather yellowish brown sand with light grey sand admixture.

The rest of the layers are PRIMARY SILTS. Comparatively much cleaner. Nearly all hard and lumpy - whitish + yellows + variations of these. All redeposited materials or various washes from natural. All = 218 in WY where not yet divided into layers. P90

232 Dark grey sandy with large flecks of grey-brown sand. Lumpy lumpy.  
LATER \* This is definitely a lilly / lumpy layer

233 Similar to 232 and in some ways as lumpy as 232. This is of a sandy lumpy texture. Slightly darker grey mixed with grey-brown sand, with large flecks and smears of charcoal.

\* MORE LIKE 2342 THAN LIKE 234!  
232 is almost solid turf.  
This is greyer and more lumpy and less sandy than 234 - more like 232 - but could nevertheless be an deposit with 234. Like our deposit with sand variations.

234 Could be one deposit with 232 + 233 as all very similar in texture but with slight colour differences. Mixture of dark grey lumpy and lumpy yellowish brown sand. Flecks and smears of ch. d. The yellowish texture distinguishes it from 232 + 233. 234 is really much like of turf and ch. d., with grey, or grey bedded with yellow!

235-236 RECON } BUT LATER DELETED

237 235 Looks whitish grey, lumpy flecks and smears of charcoal with dk grey lumpy and slight admixture of grey-brown sand. Charcoal is large white; more charcoal than 234.

LATER \* This is a lumpy layer with charcoal. More lumpy than 233 + 234 which are of a sandy texture. However, as a group, we could put 232/234 | 237/233 237/238 together as turf or lumpy texture deposits.

- 334 Coarse yellow sand / redwash. Faint greyish lenses.
- 335 Similar 334. Coarse yellow sand / redwash with slight grey sand admixture.
- 336 Hard compact dense dark grey / dark brown slightly clayey sand. of small layer in East face of B, and deposits opposite this, S. of B/S wall bench (section QN)
- 337 Clean coarse yellow sand from next. b/s with streaks of rusty orange sand.
- 338 Coarse pale whitish yellow redwash with faint brown / pink antrons.  
Pebbles towards the top.
- 339 Finest greyish dirty coarse yellow / white sand
- 340 Similar 339 - Finest greyish dirty coarse yellow / white sand
- 341 Clean finest yellow coarse white sand
- 342 looks pinky / grey / yellow.  
= coarse yellowish white sand with pinky - grey sand admixture
- 343 } Similar finest pinky / finest whitish coarse clean white  
343A } sand. Separated by lines of orangey brown coarse sand
- 344 Hard medium. Coarse yellow sand / redwash with faint pinky brown antrons
- 345 Finest whitish grey-yellow sand / redwash
- 346 Coarse yellowish redwash with waxy-brown sand admixture
- 347 Coarse finest whitish brownish-yellow redwash
- 348 Coarse clean finest whitish white sand

END OF XY

~~235~~ ~~Dark yellowish brown sand~~ DELETED

Nos 235 + 236 deleted when drawing revised after informing Mr. Much

~~236~~ ~~Dark grey sand (y) with yellowish antrons. Could be 234 but seems too rusty~~ DELETED

237 Per above

238 Grey-brown sand with faint yellow antrons = 211 in WY

239 Streak of yellow sand with slight grey sand admixture

MAY WELL BE SAME LAYER

~~240~~ ~~Grey sand with yellow // brown antrons~~ DELETED

Nos 240 + 241 deleted when drawing revised after informing Mr. Much

~~241~~ ~~Pale yellow sand~~ DELETED

END OF XY (as far as it's relevant to date)

SEE BACK FOR NOS. 326 to 348 and ADDED TO SECTION LATER

15

JOINING SECTION WY TO XY AFTER TAKING  
OUT B/S WITH

Additional descriptions and extra layers.....

203 As before

204 As before

205 = 221 as before but should be described as slightly lumpy

\*242 Seems to be a stratohor. Filling is dark grey brown  
and lumpy with flecks of charcoal.

222 From XY had to be added to WY

209 = 229 As before

231 Looks a darkish brown / grey in WY

232 Definitely lumpy layer in WY — 232/234/237 all look  
part of one charcoally / lumpy deposit with slight variations  
of sand content giving colour differences / slight  
texture differences.

234 As before — faint yellowish lumpy deposit

\*243 Had to be added to WY — originally drawn as  
part of 211. This is exactly like 234. Turky  
deposit with faint yellowish washes.  
Could be one deposit with lumpy 210 — just  
slight variation.



211 This really split into 3 layers, so renumbered + redscribed and now OK. 211 is now a yellow grey = 238 in XY

\* 244 Add to W4 - originally drawn as part of 211. Dense dark grey sand with clayey texture (not lumpy) and faint yellow sand streaks. possibly same as 212

217 = 240 as before

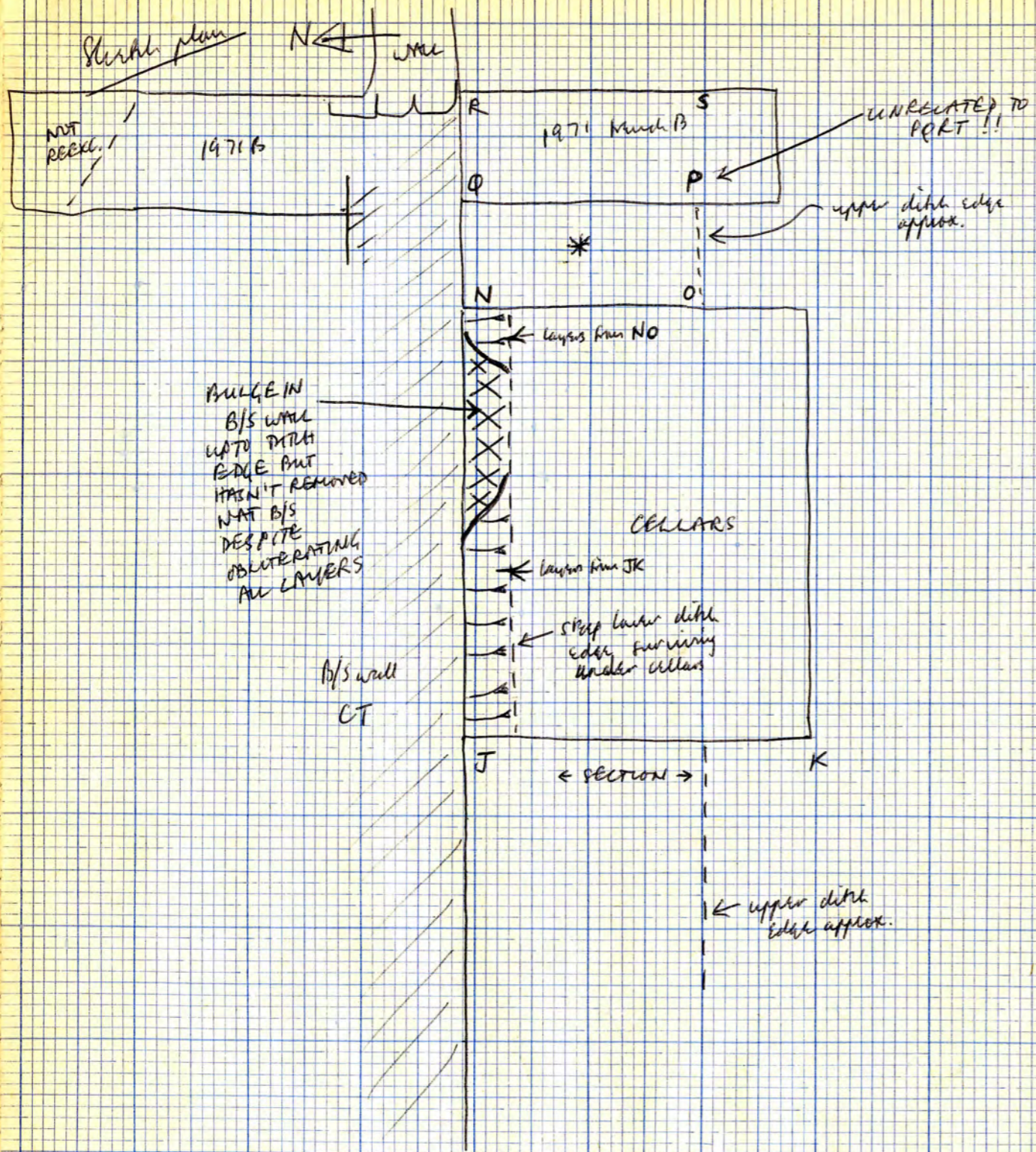
218 = 241 as before but maybe variations near XY when excavated.

See also additional notes on 203 + 204. Can't follow top layers round because of "kink" so will have to be clarified by excavation.

End of joining W4 to XY. Next number to use = 245

TO DO Check of layers S. of B/S wall from bench B to yellow + note extent E-W to JK ✓ East side of bench B + draw top part properly to scale

Dig ditch there. NB layers in XY 221/222/223/224 suggest by their disposition that the "cut" being followed East from E2 F2 may in fact just be odd disposition of upper layers. NOT down to lumpy's. To dig + clarify.



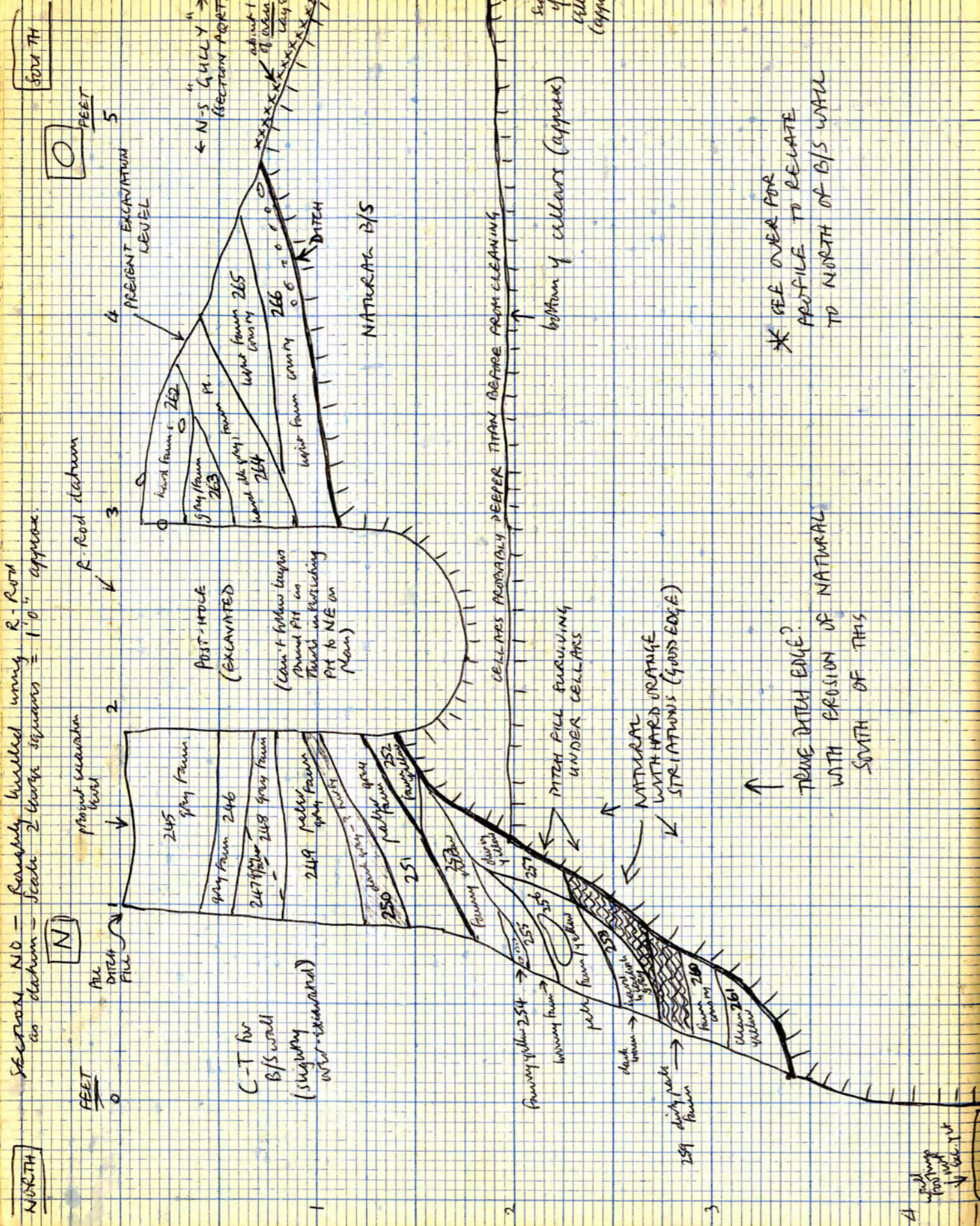
"BLOCK" OF DITCH LAYERS SOUTH OF B/S WALL BETWEEN CELLARS AND 1971 TRENCH B.

\* It is not possible to follow layers through from JK to this part of the area. Although the steeper lower part of the ditch survives E-W under the cellars, at one point this stratification is totally broken where the B/S wall bulged S. wards right up to the ditch edge ~ presumably ditch collapsed at this point when B/S wall C.T. was open. Lower layers from JK continue E. along ditch up to this bulge. East of the bulge are layers from NO

SECTION NO

This was initially drawn as part of Section PQRT along the centre of the N-S gully with S.H's and P.H's. Then, ditch layers were not carefully examined and nothing was excavated below the bottom of the cellars. So, re-examined, and ditch layers drawn and followed along the S. side of the B/s wall CT through into 1971 Trench B.

Starts with no 245 continuing section no. sequence from joining WY/X4



SECTIONS ONLY

LAYERS IN SECTION NO (on MTRH FILE)

Nos 245 to 251 are more easily distinguished in P&Q (see sketch plan)

- 245 Grey brown sandy with waxy faun beds - looks dark grey-faun. Sparse fine ch.c. beds, few bones (but not THE grey layer). Could be two deposits - bottom part is grayer & slightly lumpy.
- 246 Similar 245 but much more distinctly bedded with waxy faun sand. Also darker grey & could be a bit lumpy. Looks grey/faun.
- 247 Similar 246 but more sandy. Looks grey/faun.
- 248 Similar 247 but more silty. Looks generally grey with only a few faun beds.
- 249 Pale layer. Generally a greyish-brown sand with a slight admixture of grey sandy/silty. Sparse ch.c. beds
- 250 Distinct dark blackish grey with char coal. Certainly silty rather than sandy and possibly even lumpy.

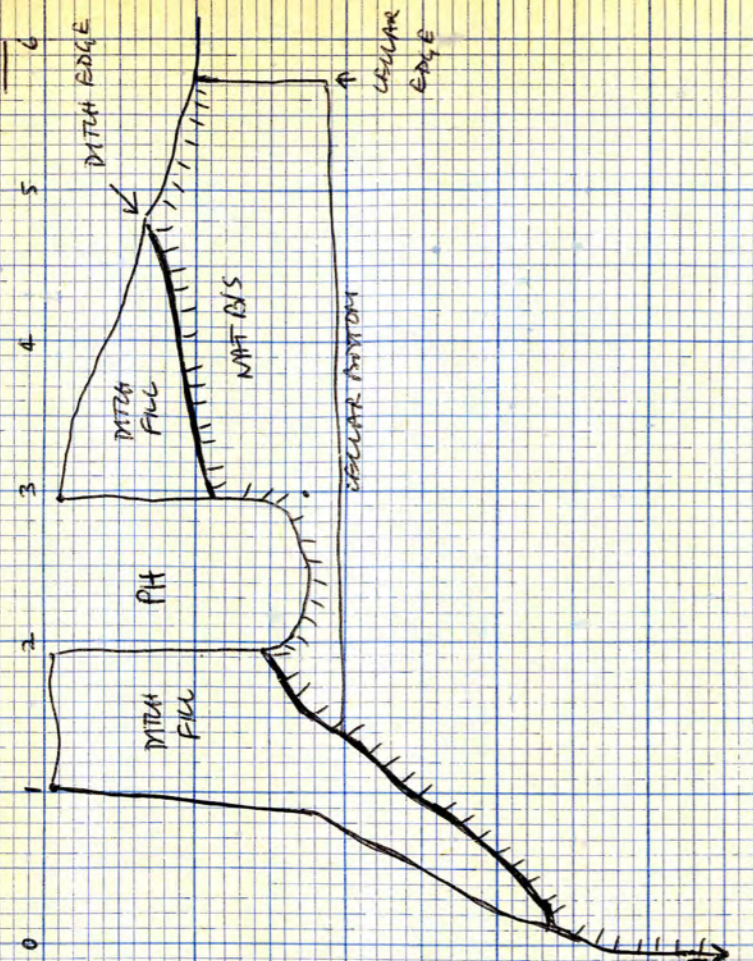
\* SEE OVER FOR PROFILE TO RELATE TO NORTH OF B/S WALL

TRUE DITCH EDGE? WITH PROSION OF NATURAL SOUTH OF THIS

259 dark beds

SOUTH

FEET



Outline profile of section. No in relation to N. of B/S wall - scale 1 sq. = 1' approx

NORTH

after removing bottom material + underlying

3'0" N N SECTION

ALL DITCH FILL

2 1/2" W. of point X

B/S WALL C-T

WALL FOOTINGS UNEXC. YET

NOT YET EXC. TO DITCH BOTTOM

Make yellow primary silts (SEE SECTION WY)

East-west Section WY

FEATURE

POINT X

2 1/2" W. of point X

B/S WALL C-T

WALL FOOTINGS UNEXC. YET

NOT YET EXC. TO DITCH BOTTOM

Make yellow primary silts (SEE SECTION WY)

East-west Section WY

FEATURE

POINT X

2 1/2" W. of point X

B/S WALL C-T

WALL FOOTINGS UNEXC. YET

NOT YET EXC. TO DITCH BOTTOM

Make yellow primary silts (SEE SECTION WY)

251 Admixture of grey + fawn sand. Looks grey-fawn with whitish washes. Pattern similar to 249

\* The layers below 251 are all much cleaner, paler, yellower, + lacking in silt content. Quite a sharp change here. ? The primary silts.

252 Pale crumbly yellow fawn sand. Could = 266

253 Pale admixture of fawn + light grey sand. Few ch. cl. Pebbles.

254 Tiny pebbles with light fawn sand

255 ~~Pale~~ Admixture of grey + yellow + fawn sand. Looks darkish grey/fawn

256 Pale admixture of grey/yellow/fawn sand

257 Dirty yellow rockwash. Reddep. nat.

258 Very dark and very hard layer.  
Compacted dark brown + dark grey sand.  
? a little - but not clayey / lumpy consistency.

259 Dirty very pale brownish fawn sand

260 Lumpy, crusty, clayey mid-brown to dark brown sand.

261 Pale yellow reddish with lenses of grey sand.

Can't join N+S of PH as there's another intersecting  
excavated PH just NE on plan - also two layers in to  
natural

262 Hard compacted fawn sand with greyish admixture. Pebbles  
+ tiny ch. cl. - lighter than 245/246/248/249/250/251  
so can't equate

263 Mid-grey admixture fawn sand and grey sandy.  
Could be any of 245 to 249.  
Perhaps most like 246 or 249

264 Hard, darkish grey with faun beds. Certainly  
silly, possibly even lumpy, with admixture of faun  
sand.

Only roughly like 251 and is grayer + more silly  
than 251 so probably not the same.

\* Layers under 264 much paler + sandier — sharp  
difference — no sil content under 264.

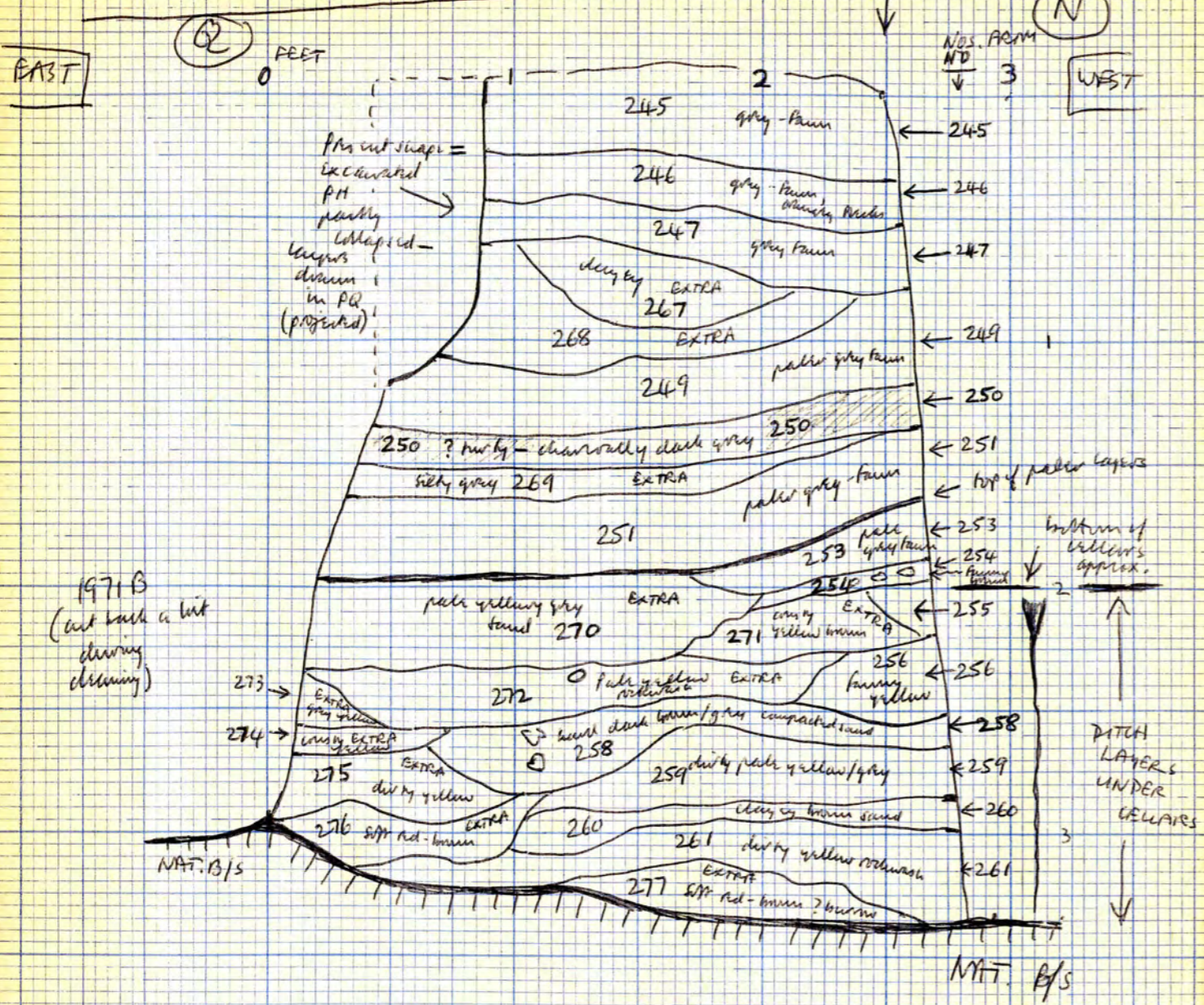
265 Crusty pale faun sand with orange yellow arthropods.  
Similar to 266 but distinctly more of a yellowy orange  
colour.

266 Crusty pale faun sand. Tiny pebbles towards  
the bottom. Core = 252

END OF NO

Next number to use = 267

SECTION QN (S. SIDE OF WALL TRENCH)  
SCALE 25ft = 1"



JOINING SECTION NO TO SECTION PQ ALONG  
S. SIDE OF B/S WALL TRENCH.  
= SECTION QN

Can't relate layers to N. of B/S wall - except they seem to belong to group of darker grey/browns. [?] excluding primary silts N. of wall and ??? excluding pale layers S. of wall.

Possibly the dark grey charcoally 250 = the dark grey turf with charcoal N. of the wall, though there's no evidence for this. Certainly much less turky S. of the wall, but it's the only possibly comparable organic/silty layer.

The angle of ditch-hill down the steep slope at the S edge of the ditch precludes relating layers. Also there's probably a lot of extra "intercalating" layers at the edge - and so many layers are similar, being derived ultimately from the same silt. There's no sort of layer except the turf with charcoal and the primary yellow redeposited strata that one can put into a definite category.

LAYERS IN QN

Nos 245 / 246 / 247 / 249 / 250 / 251 / 253 / 254 / 255 / 256  
258 / 259 / 260 / 261 continue through from NO

Extra comments

250 seems quite lumpy in this section, stands out of the heavy sticky clayey consistency of the organic stuff N. of the wall bench.

260 is a lumpy clayey sand (but not organic stuff).  
is in hard dark lumps

Layers in QN which are not in NO

267 lumpy layer with bones + pebbles = dark grey-brown sandy with bits of red clay.

268 looks dark grey-brown = heavy admixture of clayey-red and dk. grey sand (y) and brown sand with flecks of ch. cl.

269 silty dark grey sand with soil flecks and faint admixture of whitish sand. Deposited white blocks in P.C.



270 Paler than 253 but could be same layer though it also looks less grey and sandier.

Looks yellowy grey = wash of yellow sand with grey sand(?) admixture or lenses

271 Lumps of crusty brown clayey sand (like that in 260 but paler brown) in softer fawn sand.

272 Coarse pale dirty yellow rockwash from road. - pebbles + bits of purple red clay (like natural outcrops S. of ditch)

273 Admixture of grey + yellow sand. Similar 270 but slightly grayer + less yellow than 270 in section PQ

274 Crusty coarse yellowy fawn sand with reddish clay bits + ~~to~~ waxy wetness.

275 Coarse yellow sand from road h/s with waxy sand wetness + small bits of purple-red clay.

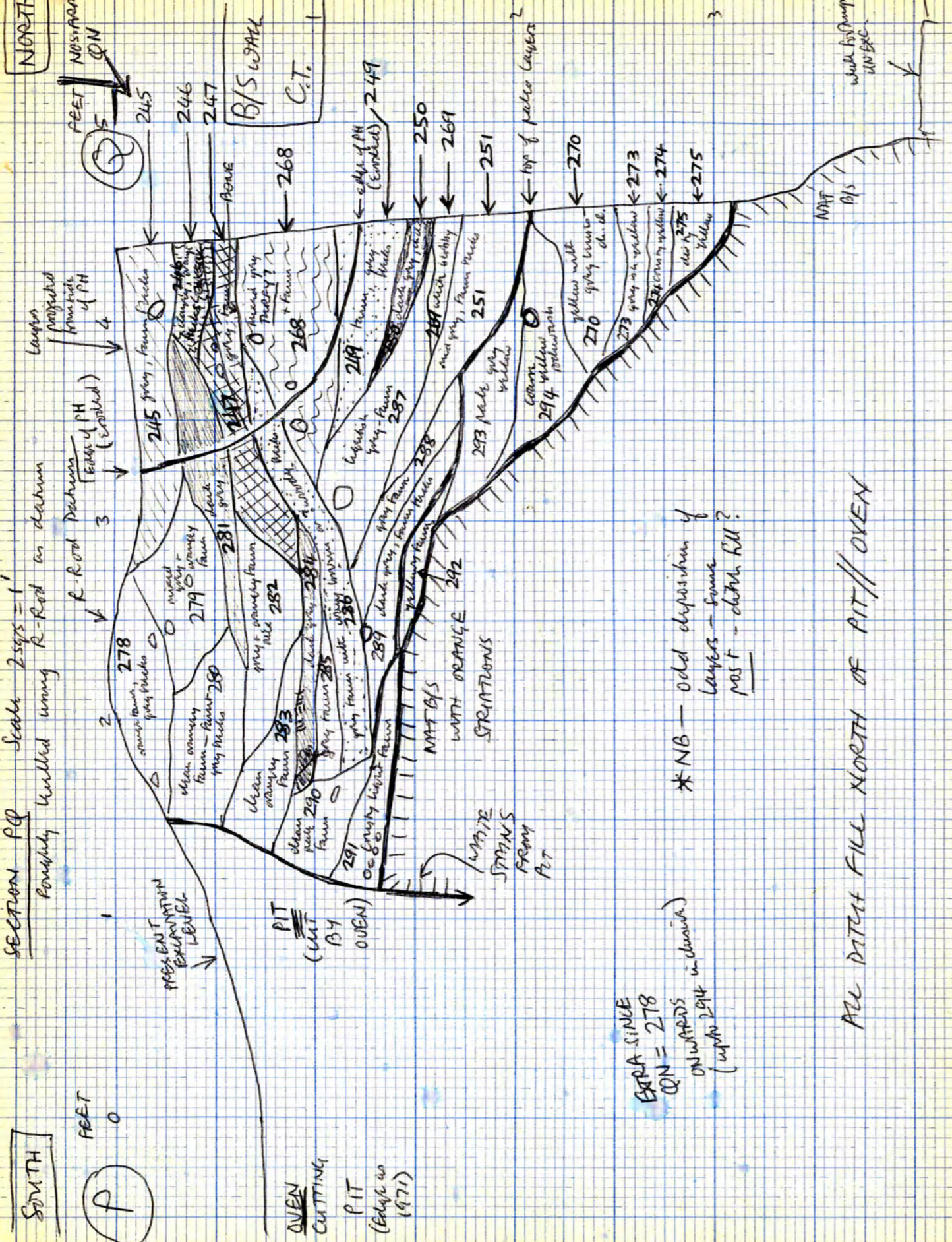
276 Atypical of ditta generally  
Soft dark grey sand with reddish nodules.  
[? burrow along side of wall]

277 Soft dark grey sand with reddish nodules  
similar to 276. Some nodules of red clay  
[? burrow along side of wall]

END OF QN

Next - follow QN through PQ (W. part of 1971B)

Next number to use = 278



### SECTION PQ

(originally W side of 1971 B but "cut back" during cleaning - levels to N. of B/S wall as in 1971 section drawing)

Nos. 245/246/247/268/249/250/269/251/270/273/274/275 continue through from section QN.

Some of the layers in PQ are certain to appear also in NO and should join up when excavated. However, all layers in PQ which couldn't be followed round through QN have been given extra numbers and the section treated as an entity.

### Layers in PQ

- 278 Fairly pale looking grey/orange = hard waxy-fawn sand mixed with grey sandy. Few pebbles of ch.d. Shaggy less grey than 279 but could be same layer
- 279 Fairly pale very sandy mixed grey + orangey fawn sand.

278 + 279 are much less grey than 245.

280 Clean looking pale waxy brown sand with faint yellow  
textures and faint light grey sand(y) admixture.  
3 large ch. cl. pebbles. Pit crusty

281 Very dark grey sandy with faint waxy-brown  
sand admixture. Charcoal smears.

282 Very similar 279. Fairly pale mixed grey and waxy-brown  
sand. 3 or 4 ch. cl. pebbles.

283 Very similar 280. Cleanish pale waxy brown sand  
with crusty texture.

284 Very dark almost blackish grey sandy. Ch. cl. pebbles  
and faint brown textures. Similar 281.

285 Dirty grey sand with faint brown textures

286 Very odd layer. Largely distinguished by its iron  
brown pebbles. ? Are these woody/organic or similar  
to iron deposit brown pebbles found elsewhere in ditch.  
Pebbles are in a darkish brown/grey sand admixture.

\* NB - odd deposition of layers down to 286.  
? later than ditch filling

287 Grey - brown sand to sandy looking yellow grey.

288 Darkish grey - brown sandy with faint brown sand  
worms

289 Similar 288 but darker grey and slight yellow sand  
worms.

290 Very clean very pale brown sand with faint grey  
sand worms

291 Hard crusty v. pale brown sand. Few tiny pebbles +  
red clay flecks

\* There's faint greyish grey staining down the pit  
edges from 283 onwards. Stained also to whitish about  
3" into natural below level of 291

292 Dirty yellow/fawn sand with slight grey admixture.

293 Pale blobby grey sand and yellow ochre wash

294 Cream warm yellow sand ochre wash. Faint orange  
admixtures

~

Extra comments on PQ

245 is very fairly - almost hurt-bleached

246 has a lumpy texture + has two bits of red clay  
as well as yellowy orange flecks.

281/284/ + 250 are similar dark almost blackish layers

268 is very fairly - almost "dirty" with dirty fawn sand  
admixtures

END OF PQ

Next number to use = 295  
Karl Wolmar



298 Looks grey / brown.  
Very sandy admixture of grey-brown sand and orangey-brown sand.

299 Lighter than above + below, but more grey than 298 and lacking the slightly orangey admixture.  
Looks grey / brown = admixture of grey sandy + dirty brown sand - more brown sand content than 297

300 Mid-grey to dark grey sandy - 1 or 2 small pebbles of ch. d.

301 Crusty hard surface - mixed yellow + brown sand with brown pebbles - very faintly greenish-yellow tinge so could be very.  
Certainly over 302 + may continue over 302A

302 Dark brown to dark grey sandy with faint brown sand admixture

302A Nothing to do with 302 -  
fairly pale-brown sand with some admixture of grey sand.



303 Clean very pale buff-fawn sand with 1 or 2 beds of ch.d. ~ "crisp" but less "crusty" than 306 & lacks the faint yellowness of 306

304 Dirty fawn sand - separates two similar layers 302/305 - probably wash or sample of 306

305 Mid-grey to dark grey sandy

\* The top of 303 / 306 / 309 / 310 seems to be the top of all the paler layers - largely sand below that with very little silt content. However 307 + 309 are dark brown layers, but again, sand & not really silt; all under 307 + 309 is very pale

306 Hard crusty light buff-fawn sand. Clean, with slightly lumpy texture. Faint small beds of hard coarse yellow sand, from rock. Rather darker & slightly greyish where it underlies 302

307 Fairly brownish dark grey sand. Lumpy / crusty texture. Slight brown beds. Slight pale grey sand beds, giving a slightly lighter colour than 309. Some wavy-brown beds.

308 Dark grey sand with fairly yellow beds.

309 More dark grey sand with dark brown streaks. Slightly lumpy / clayey texture.

310 Soft dirty brown sand with grey sand admixture.

311 Pale buff / brown sand. Slightly dirty.

312 Dark grey / dark brown hard clumpy sand (like 309)

313 Hard lumpy / crusty pale buff-brown sand. Clean. Pebbles + some purple clay lumps. Probably redeposit from upper levels of natural S. of ditch

which have since disappeared.

314 Slightly waxy pale brown sand with yellow actines.  
More sandy than 313 and lacks the hard lumpy texture.

315 Dark grey / dark brown hard clayey sand like 312

316 Dirty brown sand with waxy grey lumps and faint yellow actines

317 Dirty yellow sand

318 Dark grey / dark brown hard clayey sand like 315 + 312

319 Shale? Silt, dark brown, loose lathery sand.  
Possibly woody.

320 Slightly dirty wash of coarse yellow sand with washed-out buff-fawn textures.

321 Dirty yellow fawn sand with grey leaves.

322 Dirty yellow sand / redwash

323 Either redeposit or just dirty natural. Slightly greyish coarse yellow sand. Faint reddish orange streaks but lacks the hard orange continuous striations of the natural.

324 Clean coarse yellow sand - redeposited natural

325 Crusty light buff / fawn sand similar to 313

? were they related in 1971

\* Note that 1971 trench B was excavated at the height of summer. All layers were dry with few noticeable colour differences, and most textures are similar. Pictures were difficult to draw (spent 2 weeks on trench B alone) and almost impossible to excavate/draw in area.

GENERAL NOTE ON RS

This section has been cleared back several inches since 1971. Generally, all the layers are several shades paler than in PQ, so cannot be directly related, and also the deposition is slightly different. Also, more has been excavated from top of RS when later layers occurred.

same layers in PQ

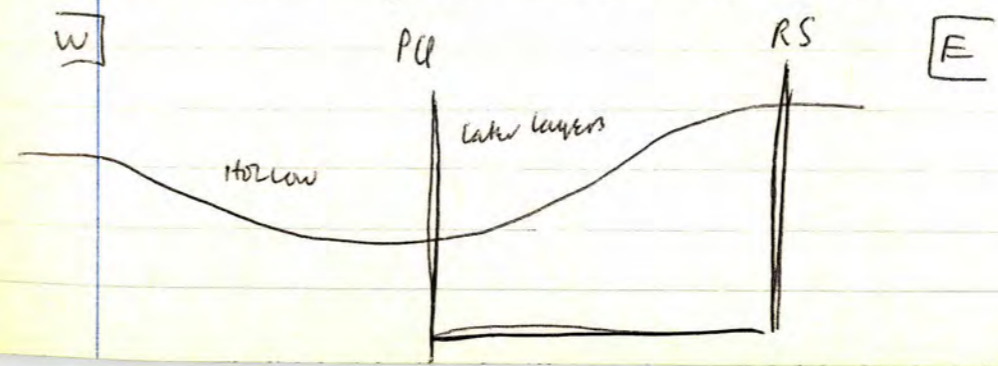
An appearance . . . . .

298 similar 280  
 303/306/ 313 similar 283/291

309 is in fact grayer than described above —  
 but like 288/289

297 similar 249  
 299 similar 287 but more fawn  
 301 + 305 but like 251 (301 more so)

It seems possible that there was a "hollow" —



with later fill appearing in PQ as the ditch filled

END OF R/S

\* NEXT

The East face of Trunk B, north of the B/S wall, has been drawn again as part of the main N. section on paper at scale of 1" to 1'. Large will appear therefore in notebook 9 as part of a different numbering sequence related only to the main N. section.

See scale drawing and notebook 9. N. of the B/S wall is still approx. in the same N/S line as R-S, though R-S has been cleaned back several inches further.

The scale drawing on paper is the FINAL VERSION and supersedes entirely the drawing in Book 11 - specifically there is NO GULLY with weed (457).

RECONSIDER THIS, HOWEVER, IN THE LIGHT OF FG 71

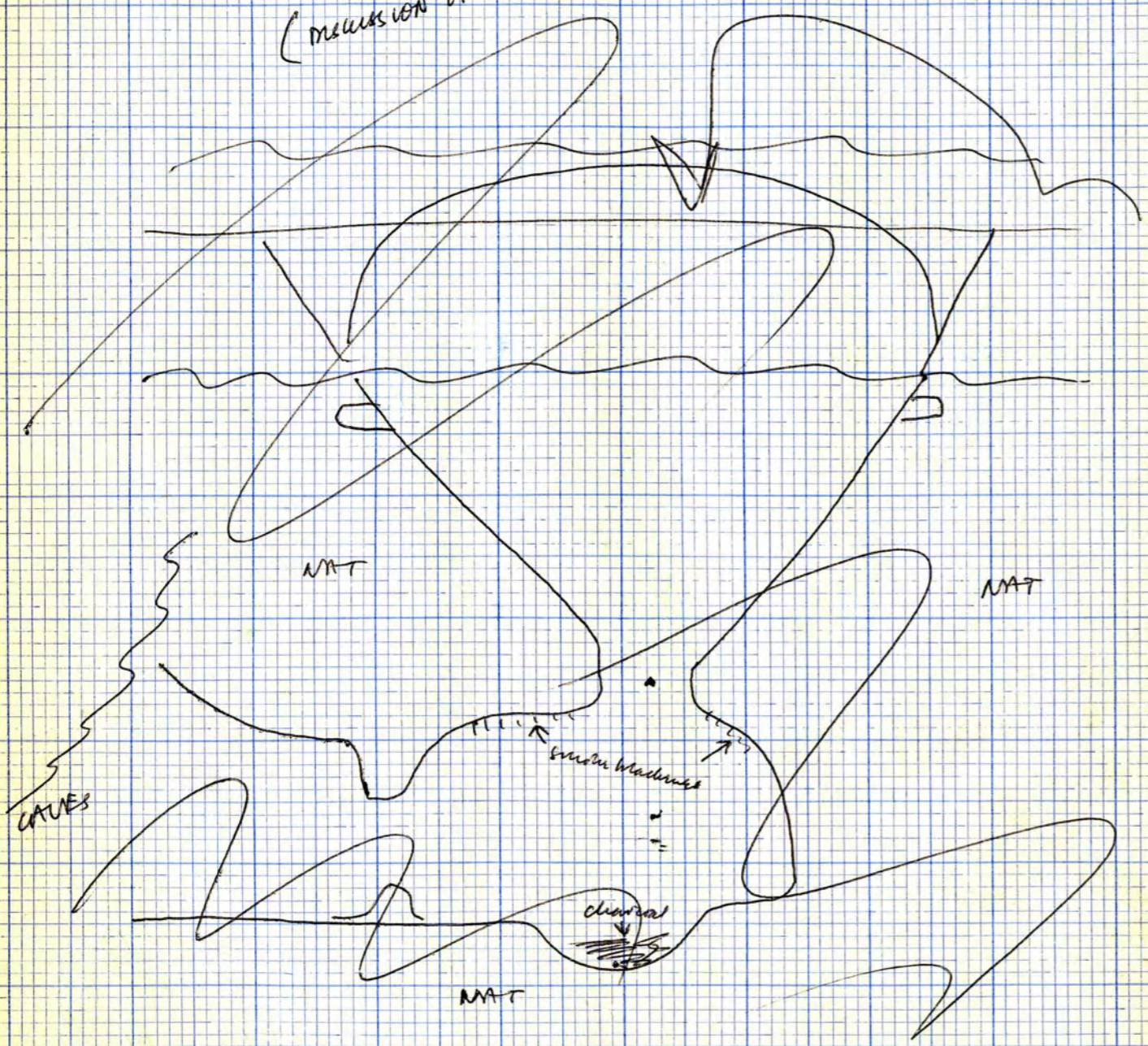
\*\* SECTION NOS 326 — 348 inclusive

These nos. were used to finish off the bottom part of the West side of Trunk B (SECTION XY) after removing the remaining 1971 backfill to the bottom of the trench. This also entailed slight revision of this section. See section XY

NEXT NUMBER = 349

STRATFO. NOS.

IGNORE  
(MEASUREMENT OF MAT WALL ON PITCHER GATE)

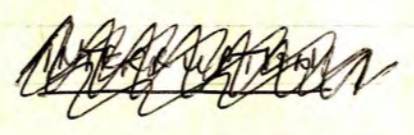
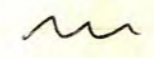


(473)

while drawing E side of trench B, N. of B/S wall, on paper @ 1" = 1'.

Layer no 179 in this drawn section - number sequence in notebook 9.

Part of mid (13) plus handle (POT) - (sketch only - removed from section)  
(\* other pot at this level during excavation)



EXCAVATION CONT.

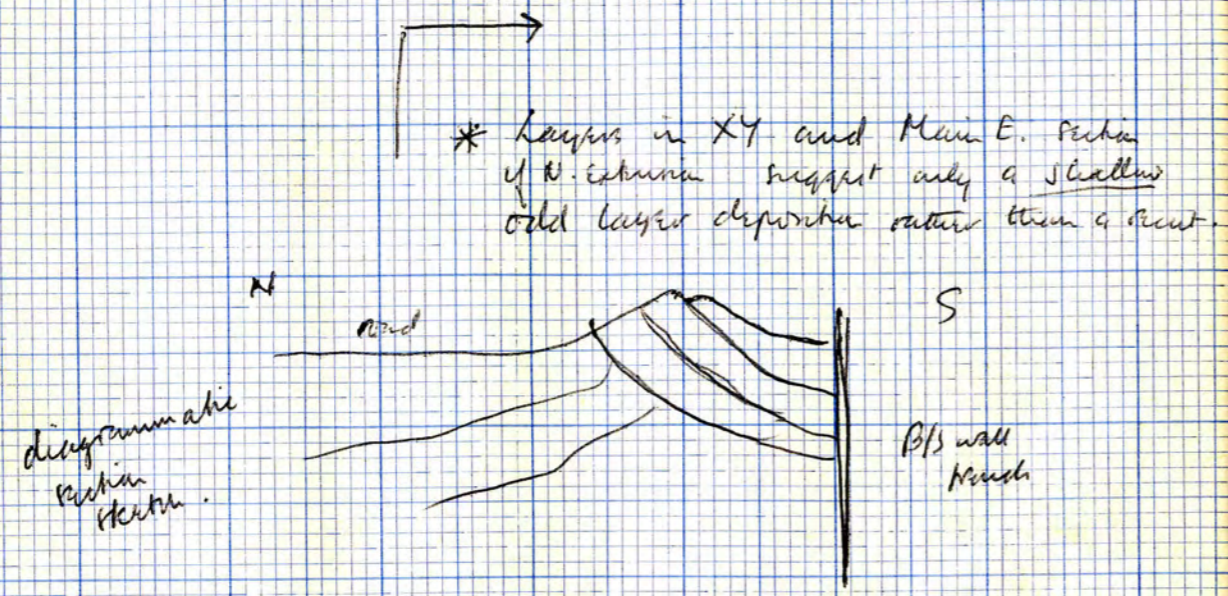
Ditch, in N. extension || North of B/S wall-branch only

Excavating section  $E_2F_2$  eastwards to another (temporary)  $E_xF_x$  N-S section parallel to  $E_2F_2$  and 3'9" East of it.

Trying to follow the edge of the ??? "cut" drawn in section - see  $E_2F_2$  in Notebook 12.

Started by Huns, continued by C.Y. - consult section  $E_2F_2$ , and look back to layers (470)/(471)/(472)

Temporary section  $E_xF_x$  drawn, over 2 pages. This is 1'9" to 2'0" East of  $E_2F_2$



Compare this with revised  $E_2F_2$  and  $E_xF_x$



TEMPORARY WORKING NOTES - E<sub>2</sub>F<sub>2</sub> to E<sub>x</sub>F<sub>x</sub>

Working notes E<sub>2</sub>F<sub>2</sub> || 2+3+162+11 (Twins) were OK. Upr. good EDGE

Can't distinguish 163 + 169 - could be same ✓

164 could be 173 ✓

? Can't distinguish 25 + 177 ✓

?? white sand from 172 seems to appear also 25, south of the "edge", but only in lumpy form so could be a wash from an edge ✓

178 can hardly be described as "lumpy" - just hard light grey sand with some charcoal \* IT'S GETTING TURFIER E-WARDS + IS QUITE TURFY IN SECTION ✓

possibly still any edge - dark line in plan between 25 + 177 ✓

16 in area is not all that lumpy - has a lot of yellow/brown sand in it. Large ch. cl. (spores evenly spaced) but much darker than 178 + much finer - EDGE? ✓

\* Consider interlocking layers - say, eg, 2/3/162/11 to an "edge", then layers run through, then, eg, 25+16 to an edge. Clearest division used in plan

GOOD STAKEHOLE under lumpy TO DO

✓ Most layers follow from E<sub>2</sub>F<sub>2</sub>

Excavated by following layers to a vertical face ✓  
Twins noted E. to S. 9" beyond E<sub>2</sub>F<sub>2</sub> ✓

Plan runs int. 9" west initially to an actual section 1' 9" to 2' 0" approx. East of E<sub>2</sub>F<sub>2</sub> (Sth in that section) ✓

nos. 2/3/162/11 already exc. by twins ExFx by twins

NOTES ON EXCAVATION OF E<sub>2</sub>F<sub>2</sub> to E<sub>x</sub>F<sub>x</sub>

(Cp1)

Excavated stratigraphically from E<sub>2</sub>F<sub>2</sub> to E<sub>x</sub>F<sub>x</sub> by running layers one at a time as far as could be distinguished. Working always to a vertical face, essentially drawn as E<sub>x</sub>F<sub>x</sub> when down to bottom of ditch.....

As noted before, layers extremely difficult to follow. Although they show in section, indistinct in area excavation as colour and composition differences are so slight. Some layers are clear and obvious, eg. white sand beds ~~(172)~~ 172 = (7), the black huffs 178/16 (12)(17)(18), and the clean yellow/whites of the primary silts as a group of layers.

(Generally, all the layers seemed to follow through, but this is only possible to say by working from E<sub>2</sub>F<sub>2</sub> drawing - some differences would not have been seen otherwise.

Seemed to be several anomalies, however, as follows.....

Whilst excavating - (points noted) [nos. refer to E<sub>2</sub>F<sub>2</sub>]

- A. Can't distinguish 163 + 169 - could be same layer.
- B. Can't distinguish 164 and 173/171. Could be same stuff.
- C. Can't distinguish 25 and 177 along the line of the possible edge drawn in E<sub>2</sub>F<sub>2</sub>. Could be same stuff.
- D. ? white sand from 172 (w = bottom of 171/173) seems to appear in thin beds over 25, south of the "edge".

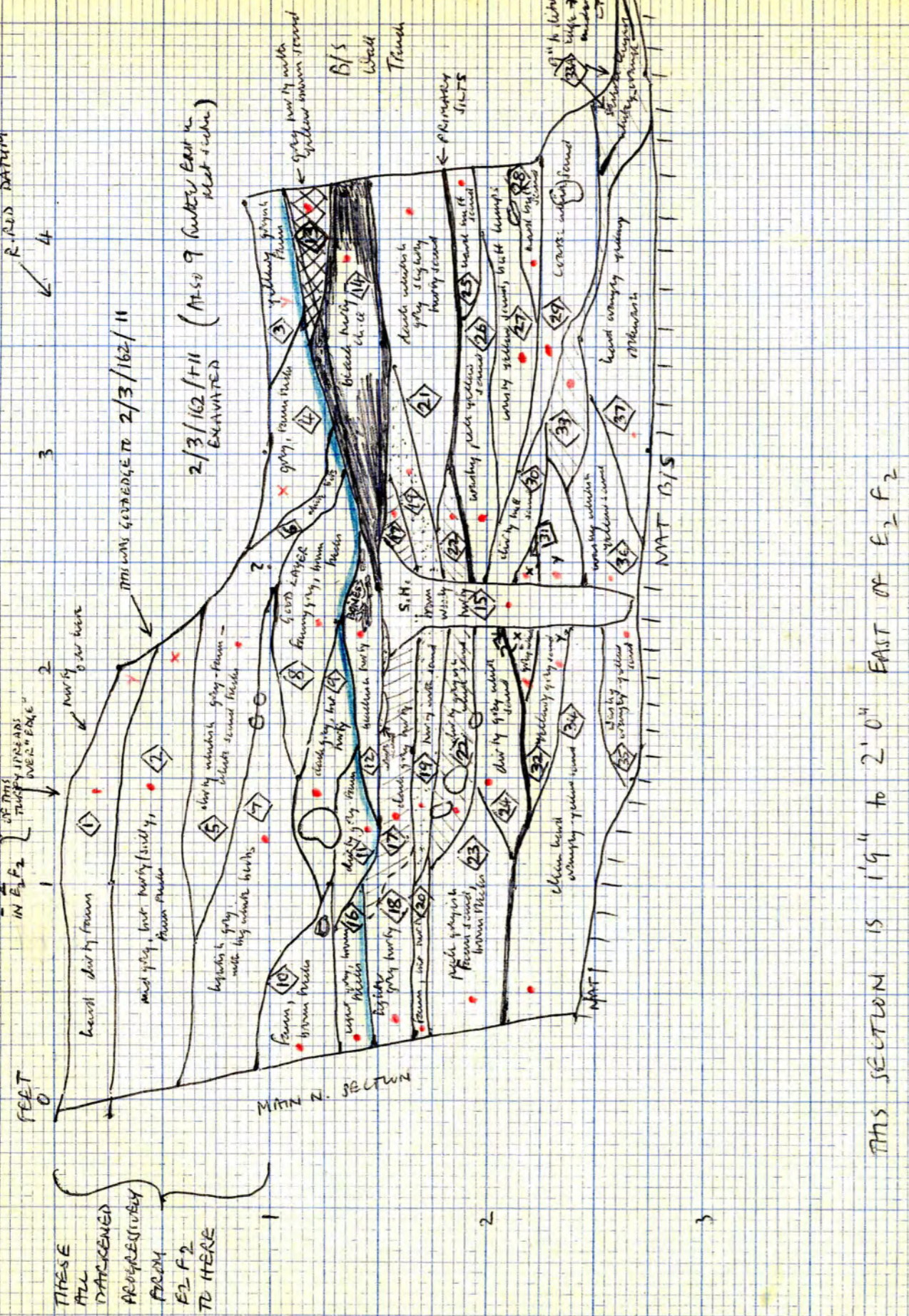
As only lumpy, possibly a wash from the edge if there is one. [THIS MAY INDICATE THAT THE (8) ADDED TO E<sub>2</sub>F<sub>2</sub> IN RED AND STIPPLED COULD EXTEND RIGHT THROUGH TO WALL CT AS ALL 25] [PTO over 3 maps - in graph side]

TEMPERARY SECTION E<sub>x</sub>F<sub>x</sub>

[N.]

[S.]

SCALE 1" = 1'0"  
2.54" = 1'0"



THIS SECTION IS 1'9" TO 2'0" EAST OF E<sub>2</sub>F<sub>2</sub>

SECTION E<sub>x</sub>F<sub>x</sub> - 2'0" approx., East of E<sub>2</sub>F<sub>2</sub>

E<sub>x</sub>F<sub>x</sub>  
Layers in section opposite —  
◊ nos. refer only to this particular intermediate temporary section.

from E<sub>2</sub>F<sub>2</sub>  
# 169 + 163  
plus bit of  
170 by N.  
section.  
[? continues  
from into 25]

- ① Dirty brown sand faintly bedded with grey silt on top and faintly bedded with white sand. 2 or 3 sparsely spaced beds of ch. d. Very hard. Faint green-yellow beds.
- ② Odd shell - looks light grey to mid grey. The grey in it is a grey sand (? lumpy or silty). This is with an even admixture of sand which looks darkish now but may have been a dirty whitish brown. Either could be described as "beds" in the other. Some very brown beds and sparse small ch. d. Faint green yellow beds.
- ③ Hard dirty brownish sand bedded with grey. Remarkably similar to ①. ? some layers (if so, gone wrong in E<sub>2</sub>F<sub>2</sub> drawing, or mistaken excavation since - perhaps turns made a mistake when running 2/3/162/11 from E<sub>2</sub>F<sub>2</sub> up next section E-wards.
- ④ Mid grey / lightish grey admixture with brownish sand. Remarkably like ②. See comment on ③ which could apply to this also ? some layers as ②

SEE OPPOSITE \*  
170 probably  
#169 under  
169  
170  
E<sub>2</sub>F<sub>2</sub>  
170  
163

E<sub>x</sub>F<sub>x</sub>  
OTHER -  
FROM  
SECTION  
MAYBE  
170 -  
? continues from  
into 25

2/3  
picking  
by section  
24  
? = ①  
= what 25?  
(picking by  
24)

? = ②  
= green  
25!

CORRELATION TABLE.

Ex Fx	E <sub>2</sub> F <sub>2</sub>	Ex Fx	E <sub>2</sub> F <sub>2</sub>
①	169 + 163 and bit of 170 + ? into 25	②①	Made up in E <sub>2</sub> F <sub>2</sub> or = 179
②	170 + ? into 25	②②	Should be 17 judging by 24
③	? = ① = blue 25? judge by 24	②③	180
④	? = ② = green 25? judge by 24	②④	181
⑤	171 and 173 in same layer, + red 25 of green 25	②⑤	194? (and 184?)
⑥		EXTRA (but primary silt)	
⑦	172	②⑥	182
⑧	Made up of = 174, part 177, part 25. Alternatively ⑧ = all 25? 7 24 with wrong	②⑦	183 (and 184?)
⑨	175, or 175 stopped + ⑧ cracked	②⑧	part with ②⑦ or = 185
⑩	176 + including part of 177 (added E <sub>2</sub> F <sub>2</sub> in order)	②⑨	186
⑪	EXTRA	③①	EXTRA
⑫	EXTRA, or if part of ⑭ = 16	③②	EXTRA; or part with ②④ and include ②④ as primary silt
⑬	14 in 24 which is probably same as 26 in 24 and E <sub>2</sub> F <sub>2</sub>	③③	EXTRA
⑭	16	③④	probably 187/188/189/190/192 (191 gone) and 197/198/199 with 194's gone - all got v. thin + merged
⑮	EXTRA (new)	③⑤	200 with 201 gone? check final N. section
⑯	EXTRA (see N. section from over 6 pages)	③⑥	EXTRA, or with ③⑦ as part of 196
⑰	① = ⑧, = 178	③⑦	196?
⑱	(+ ①?) = 178		
⑲	168/202/165		

⑤ Sandier + redder than ②. Still looks greyish with white beds. Seems to be a slight admixture of dark grey sandy (? barby) in a whitish grey to whitish brown sand (dark appearance - indistinguishable colour). white sand beds.

⑥ Is this ⑤? Looks similar mixture plus some bits of white sand. Could be derived from or part of ⑦ white sand in small bits definitely extends to S. limit of layer drawn as ⑥

\* Section is not all that clear - a soft patch breaks up the middle of ④ and it may not be all the same. ③ is not all that different from ④ but harder, sandier, + lighter though the division is not as distinct as drawn. ⑤ → ⑥ is not all that clear either, as it's very thin here. The whitish looking bits are OK, as is the S. limit of ⑥, but ⑥ could extend higher up into ④, particularly in the N. 1/3 of ④, to the S. of which it is "disturbed" by a soft patch which makes a hole every time the section is cleared (probably not disturbance as there's a lot of roots in this section).

No. 42  
FROM  
E<sub>2</sub>F<sub>2</sub>

⑤ and ⑥  
= 171.  
And add 173  
as same;  
plus  
Red 25?

Continued from 3 pages previous - notes on excavating E<sub>2</sub>F<sub>2</sub> to ExFx

E. The area 178 is not particularly hairy. Rather, hard bluish grey sand with charcoal. However, it gets progressively more hairy working Eastwards and shows quite hairy in section ExFx.

F. Primarily still an "edge" at lower level - dark line in plan between 25+177 at that level  
 [\* difficult to say why - upside, or possibly looked dark because raised (S) = part of 174 + 177 which was higher slope dipping below darker material - thus splitting up 25]

G. 16 is area is not all that hairy. Contains a lot of dark yellow-brown sand. Large ch.d., sparse and evenly spaced. Much denser than 178 + further - ? Edge or 16 near 178

H. (White digging) - consider intruding layers - say, eg. 2/3/162 and 11 go to an edge, possibly filling a watercourse channel from natural drainage down slope from W to E - possibly why they're hairy, and dark dirty sands.

Plan ? 25 to an edge } In hindsight, probably not - especially if  
 and ? 16 to an edge } split 25 as in revised drawing. And the  
 equivalent of ~~16~~ 16 in ExFx does not go to  
 an edge but within the lighter hairy  
 equivalent of 178.

J. 16? probably a root; possibly a SH

K. Good SH showing in ExFx

L. Primary silts - clean yellow or white - contains charcoal. Lot of shak layers, difficult to blow; constant variations + changes.

More clay 191 picks out but may occur later further East beyond ExFx

M. Upper layers N. of the "channel" darkened progressively from W to E, from E<sub>2</sub>F<sub>2</sub> to ExFx  
 P.T.O.

N<sup>o</sup> 43  
 FROM  
 E<sub>2</sub>F<sub>2</sub>

172

7 Very distinctive - large blocks/lenses of white sand and had a lot of large pebbles in excavation. Blocks are in a mixture of brown to grey sandy. Gets more brown N-wards - appears in N. section as white blocks in a greyish brown (pale) sand.  
 [possibly more than 1 layer but all with big white blocks]

8 Good layer, and quite distinctive. Dirty dark grey-yellow-brown sand (in description above, with all elements mentioned). Largely a dirty whitish grey-brown sand with an admixture of grey silt. Lot of rusty iron-brown streaks + nodules and 2 or 3 charcoal nodules.  
 Alternatively, (8) = all 25? If so, 24 was wrong

174 +  
 part of  
 177 +  
 part of  
 25 -  
 appeared in  
 red in  
 E<sub>2</sub>F<sub>2</sub>  
 (made up)

9 Darkest grey rather silty/hairy (not clayey consistency) = 175  
 lightly packed with slightly whitish grey sand. Faint yellow sand nodules and 1 or 2 ch.d.

175  
 could have  
 stopped and  
 (9) started  
 different  
 description

10 Pale slightly greyish brown sand. Dirty brown nodules.

176 +  
 part of  
 177  
 (colour  
 admixture  
 in E<sub>2</sub>F<sub>2</sub>)

11 Dirty dark grey faintly whitish silty sand. More sandy + slightly lighter grey than 9 but ? 10 between them

EXTRA

12 Blackish organic hairy. Very similar to 14 + could be same. Colour matches exactly but it is very slightly sandier and lacks the charcoal but this could be chance

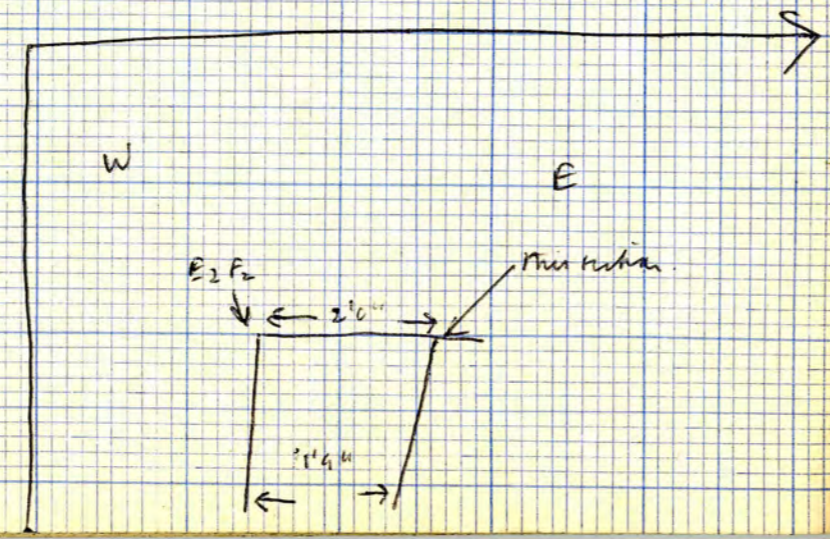
EXTRA,  
 or if part  
 of (14)  
 = 16

cont After digging, I drew up and down section ExFx.

See back 3 pages.

This indicates fairly certainly that there's no edge below 2/3/162/11 from E<sub>2</sub>F<sub>2</sub>. I'm quite sure about layer (5) which shows clearly, though a little dubious about (6), (4), (3), though (3) is certainly different from (4) (check again at next section). Truly (14) is quite DEFINITE and extends beyond any possible edge, particularly if (12) is with (14). The S.H. (15) is quite definite also but problematic - if there was a fence (though no other S.H.'s found previously) west of this on an E-W alignment it might well explain some of the oddities in E<sub>2</sub>F<sub>2</sub> at the level of 16/178 (and above?). Will have to look for more S.H.'s East of this to see if there was a fence.

After drawing ExFx I correlated this to E<sub>2</sub>F<sub>2</sub>. But judging from ExFx and the excavation notes I had to make some alterations to E<sub>2</sub>F<sub>2</sub> in colored crayon. Now seems reasonably consistent, but will have to check in to at next section. Possibly mistook in E<sub>2</sub>F<sub>2</sub> by all the root disturbances, and by dirty water percolating through to lower levels from 2/3/162/11 if it was a water channel, thereby darkening the layers below. P.T.O.



not from E2F2

Contains a group of (? bluish) very decayed bones indicated on sketch. This makes it difficult to separate (14) + (12), though (14) almost certainly extends over the S.H. (15) as drawn. Under (12) are some 1/4" thick seams of whitish yellow sand, one of which also crosses the S.H.

(13) Quite hard, looking dark brown-grey. = dark grey but mixed with yellow brown to form brown sand. Less hard than (14). Ch. cl. pebbles.

It in Z4 which is probably = 26 which appears in Z4 and E2F2

(14) Comparatively solid but (but sandy but, as one would expect on this site / in Nottingham). Bluish grey, hard consistency, loose sparse pebbles of ch. cl., slight admixture of iron sand.

16

(15) STAKEHOLE { when exc., seemed a good S.H. Could it be an exceptionally long deep one? No spshots at all. Rather tapering bottom. Filled with a dark bluish grey sandy but with few 2 ch. cl. pebbles. Has an admixture of extra brown sandy pebbles which is all that distinguishes it from butts either side. Darker than other butts either side. Colour similar to (12) + (14) but contains a soft waddy patch which (14) definitely lacks. Unfortunatly there's also waddy stuff with the bones in (12) above the level of (14).

EXTRA (NEW)

This can be plotted approx. from the position of this section R. E<sub>2</sub>F<sub>2</sub> - otherwise not planned. [and a bit with much]

CONT

(i) This meant making 169 + 163 the same layer and extending 169 to North section (to follow through from ExFx - looked at North also) - probably mixed with by green stains from pit in E2F2 (altered in blue crayon)

(ii) Making 170 + 164 same layer (altered in green crayon)

(iii) Making 171 + 173 one layer, and extending through 172 to N. section to follow round to ExFx. Probably mixed then in E2F2 by green stains from pit.

(iv) "Inventing" an equivalent to <8> using 174 + part of 177 and part of 25. Altered in red stippled (was waxy disturbed area in E2F2)

(v) Putting part of 177 with 176 (altered in red)

(vi) Combining 16 slightly with 178 (altered in red) on the analogy of <14> + <12> in ExFx - this implies the possibility of a stratified face in horizon.

(vii) Approximately correlating the PRIMARY SILTS - can't follow exactly but doesn't matter much. They fit as a group, and there are no kinds.

\*\* ALL THIS WILL HAVE TO BE CHECKED AGAINST PHOTOS OF E2F2

(viii) This leaves the problem of 25. Possibly in E2F2 this was several layers darkened by percolation from E2F2, 2/3/162/11? possibly it was all = <8> from ExFx? If so, could fit

Could it be just an odd one?

"BROKEN LAYERS?"

If there had been a line of them they might explain some of the oddities (eg. first division) in section E2F2. However, found no stars between here and E2F2. There is in E2F2 but further S., not on this line. GY found none between E2F2 and GH but they might have been missed.

Lack of JH's does not preclude the possibility of an E-W water fence which might explain "waxen" layers in E2F2 (and? are there waxen layers in GH) \* LOOK FOR MORE EAST OF THIS - NOT NECESSARILY TURFY ALL

16 Pale crumbly sand. Light greyish brown in colour. Only a little darker than <10>. Heavy iron-bearing. Possibly the greyness from being very, very slightly lumpy.

17 Mid grey to dark grey lumpy - rather colouring + sandier below than <12>/<14> but still quite lumpy. Picked with sand to the extent that the turf appears as "lumps". Some pieces of charcoal. Slightly darker + harder than <18> which is less lumpy - but could well be the same layer.

18 Possibly same as <17> lighter grey, sandier = lumpy nodular lumps picked with foam sand slightly. Light to mid-grey in colour. Picked with 2 or 3 ch.d. and some iron brown.

No. 45 FROM E2F2

EXTRA - SEE N. SECTION ON 3 PAGES

JF = <15>, then = 178

178

possibly part <17> + <8> as 178

CONT.

part 174 + part of 177 with 172, provided it is drawn to notes 25 =  $\langle 8 \rangle$ .

However, I've altered  $E_2 F_2$  temporarily in an analogy with EXFX, where there seem to be several layers in this position - see  $E_2 F_2$  alteration in column in book 12, where

Blue 25 =  $\langle 3 \rangle$

$\langle 3 \rangle$  is possibly =  $\langle 1 \rangle$  therefore blue 25 possibly = 169 + 163

Green 25 =  $\langle 4 \rangle$

$\langle 4 \rangle$  is possibly =  $\langle 2 \rangle$  therefore green 25 possibly = 164 + 170

Red 25 =  $\langle 6 \rangle$

$\langle 6 \rangle$  is possibly part of  $\langle 5 \rangle$  therefore red 25 possibly = 171 + 173

Red slipped 25 =  $\langle 8 \rangle$  (as notes)

\*\*\* THIS WILL HAVE TO BE CHECKED ON ARRIVING AT NEXT SECTION.

All this presupposes drawn originally as one layer because differences didn't show - dirty brown water percolate from above (plus root disturbances).

P.T.O.  
3 PAGES

19 Still lumpy but contains a lot more sand which gives it a paler colour.

= Mid-grey to light grey very sandy buff. The sand admixture is faintly yellowish and probably dirty whitish-brown in derivation. 1 or 2 pecks of ch.c.

20 Pale brown sand with very slight lumpy admixture making it grayer than the underlying brown sand.

21 Intrinsically lumpy. Looks a faintly yellow/white/brownish mid-grey to light grey = mid grey sand with admixture of yellow/white/brown sand.

22 Basically one a whitish brown sand but has a lot of grey sand in it.  
= dirty fairly light-colored greyish white to greyish brown sand. - pebbles

23 Clean pale layer.  
Brown sand with other sand admixtures making it brown which is faintly yellowish/whitish.  
Lot of waxy-brown pebbles.

24 Faintly greyish whitish-brown sand. Disturb + cleaner than 22

25 Coarse pale buff sand. Lumpy hard texture.

PRIMARY SILTS  
↓

NOS. 166  
FROM  
 $E_2 F_2$

168/202  
165

Unseen  
or = 179

17  
(stems by  
judging  
by 24

180


181

194?  
(and  
184?)

EXTRA  
(but primary  
silt

NOTE ON REQUISITES

All primary silt very difficult to follow through layer to layer. Can follow as a group of very clean layers, but usually very short layers with cut-out slight channels, probably from water-sifting plus slight variations in material at sides of ditch along its whole length.

(33A) Coarse white yellow sand. Contains two  strakes of dark brown grey loam. Probably tail-end of the old blue-grey clay deposits.

(26) Finely whitish waxy pale yellow sand from b/s.

(27) Hard pale yellow sand from b/s with lumps of hard-knured coarse pale buff sand (cf. (25))

(28) Hard pale buff sand like (25)

(29) Coarse pure white sand with pebbles

(30) Slightly dirty coarse hard pale buff sand. Like dirty version of (25)/(28)

(31) Greyish white sand. Bit dirty for primary silt.

\* Odd strat. in ? primary silt either side of SH

(32) Hard brown sand like (30) but with streaking of coarse orange yellow sand

(33) Probably several layers. Basically hard slightly pinky-blue off-white sand with pale orange sand streaks.

(34) Fochwash. Coarse pale ochreous yellow sand with pale grey sand admixture.

(35) Similar (34) but paler with whitish sand admixture.

(36) Like (35) but more white sand. (35) + (36) probably are layers of varying mixtures tilted together.

Nos 41  
ppm  
E2 F2

182

183

(+184?)

put with  
(27), or  
= 185

186

EXTRA  
(but  
primary  
silt)

Extra, or  
put with  
(24) + ind.  
(21) with  
primary  
silt

EXTRA

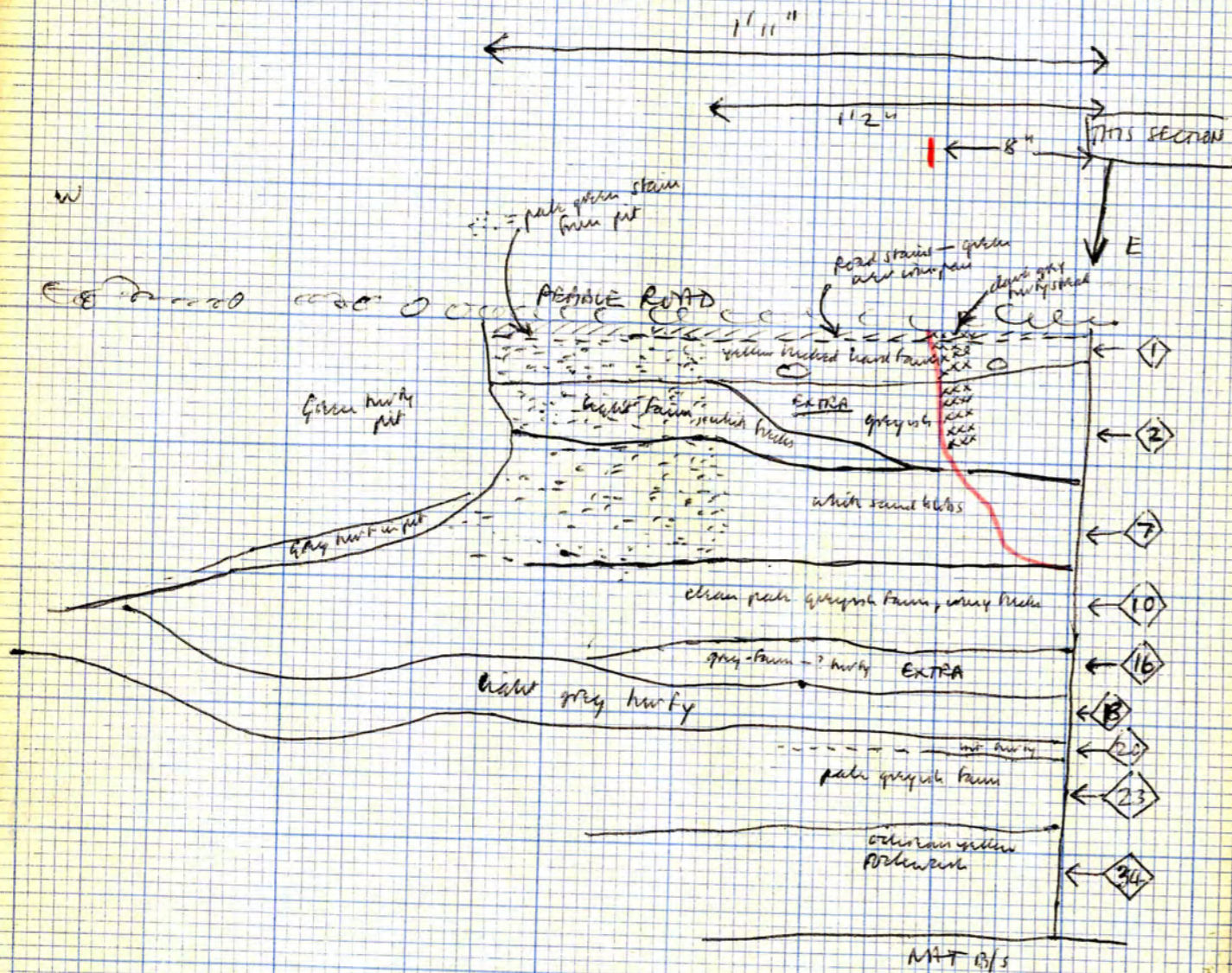
probably  
187/188/  
189/190/192  
(191 (ONE)),  
(193) 197/  
198/199 with  
two or three  
all got being  
+ mixed

200, with  
201 gone?  
check  
final bl.  
section

EXTRA,  
or with  
(37) as  
196



Sketch of part of  
North Section  
NOT TO SCALE



ALL DARKER EAST OF THE RED LINE

\* SEE LATER AMENDMENT EX Fx TO E3 F3 -  
THERE'S MORE LAYERS.

(37) Rotenator. Similar (34) but paler. Less ochreous yellow and more pale yellow. Differences probably due to differences in rot-B/s either side of ditch.

IE. (37) came from S. where rock is pale yellow.

(34) came from N. where there could well be a darker ochreous yellow natural - such "products" have been observed before.

NOTE ON NORTH SECTION —

About 6" W. of this section, in N. section, layers seem to become suddenly darker & more sandy. Nevertheless, they appear to continue straight through either side of this colour change (sketch opposite), so I don't think this can be an edge - if it is, it must include a lot of layers and the section (1) to (37) indicates not.

MOS  
FROM  
E2 F2  
196?

CONT. FROM 3 PAGES BACK.

To get the present interpretation (allows revision on  $E_2 F_2$  in Book 12) 169 + 170 + 171 will have to DIP a lot in main N section from W to E, to get the extra layers near them, because of the position of 11 if it is correctly drawn. In section TU, 11 has a number of layers near it going into the north section — anything above 11 has also to be above 169/170/171 in  $E_2 F_2$ .

If this doesn't happen, consider — (on  $E_x F_x$ ) perhaps (3) + (4) should be 25 and continue N. through (6) to include (8) [but this doesn't solve the problem of 11 if it's properly drawn in  $E_2 F_2$  and properly excavated by bins in  $E_x F_x$ !!]

So, consider instead —

Considering section TU, and through u2 to  $E_x F_x$  or  $E_2 F_2$ , could 11 in  $E_2 F_2$  have gone straight through 163/164/ and 173? Perhaps this is what it was wrong? unless TU or u2 is wrong?

END

ONLY LAYERS WITH FINDS  
GIVEN STRAT. NOS. ○

FINDS BETWEEN  $E_2 F_2$  and  $E_x F_x$

This was numbered ~~during~~ during excavation from layers according to  $E_2 F_2$  drawing — layers excavated up to  $E_x F_x$ , as in  $E_2 F_2$  drawing .....

STRATIFICATION NOS.

(474) Layer no. 171 in section  $E_2 F_2$ .  
1 body sherd of coarse qrt-pot.

(475) Layer no. 26 in section  $E_2 F_2$ .  
1 small body-should of coarse qrt-pot.

(476) Layer no. 16 in section  $E_2 F_2$ .  
Animal bones.

MTCT

EXCAVATION FROM SECTION  $E_x F_x$  UP TO NEXT

( $E_3 F_3$ ) → SECTION EASTWARDS (THIS  $E_3 F_3$  IS 3' 9" EAST OF  $E_2 F_2$ )

Done by C.Y.

Layers to be followed through as drawn in section  $E_x F_x$

Working notes while excavating... [TRANSFERRED VERBATIM FROM SCRAP BOOK] JOCK!

Excavated by C.Y. Act tunnelled out one layer at a time working up next vertical section. Layers extremely difficult to follow in area — except for definite part layers, all are similar sand textures with slight variations and slight colour differences. In fact, impossible rather than difficult! Layers in this bloody shaft are thick, but only seen clear in section. When tunnelled it's all fanny/brown/greyish sand, never any "surfaces" one layer to the next. Must have been all wet filling (mining lake compression.)

$E_x F_x$  NOS.

(3)

Gas this as drawn. when dug, soft dark grey-brown. Not really as firm as (4) so could well be different.

(A)

Gas as — quite grey — see South so will appear better "out" in next section. Down to whitish spherules. Quite like (2).



NB. The white sand spherules go down from (7) rather than (5) — only over (8), NOT on (14)

PTO.

9/3/74

\* TRANSFERRED VERBATIM FROM ROUGH NOTES TO HERE AFTER EXAMINING + PARTLY DRAWING THE NEXT SECTION,  $E_3 F_3$ , AND REALISING THERE'D BEEN A COOK-UP (FIRST BY TWINS, THEN BY ME — C.Y.) WILL NEED A LOT OF SORTING OUT

EXPT NOS.

(6) Goes thru' but seems to go to cleaner more firm "edge" so may not = (5). Could be an edge there. See brown streaks of (8), when looking North, show in the bottom of the "edge" but not as far as next section (possibly (8) could also North under other stuff?)

\* Now DOWN TO (13) + (14) which go North under the "edge" of paler layers.

EXCAVATED (1) NEXT

(1) Quite greyish when dug, so is it still (1)? Still somewhat firm. Bricks, largely on top; (? are these from turf above?); very decayed and not many kept as can't exc. them.

Down to (2) which has greenish speckles. (1) continues to next section where it has more white speckles in it. Also contains some brown organic mostly towards next section but this could well be another layer (see (1)?). Check in section.

\* (2), as looking North at the "edge" seems to get thinner. May not show in next section, unless it's veered North under other layers. There's more brown organic under (2) in next section - this is different brown org. from that in (1)

\* Now DOWN TO (2) - looking at it from "surface", seems to run right through to next section.

(2) When excavated, gets thinner to Eastwards. Seems to go thru' OK to next section, particularly by N. bank. Possibly (1) has got thinner?

Digging (5) { (6) already gone }

(5) Looks to go thru' from top. Difficult to separate from (7). when exc., seemed to go through OK, but may not show too well in section. Possibly got thinner, and something underneath (? (8)) shows.

Digging (7) - looks from top to go through OK under (5). All white blocks.

(7) when exc., goes thru' OK to next section. Looks clear in main N. section, but may look different (? extra similar layers) in next section. Looking from W. to E., it gets less white, more fanny grey than grey, but still has typical lots of pebbles content (lots lots of these pebbles are scattered + jagged + were deposited that way - not complete pebbles - ? heat)

Digging (8)

(8) when exc., continues thru' as drawn, but not quite as far as next section. There's an EXTRA LAYER of grey over it (under (7) down to turf) which takes the place of (8) in the next section.

\* The turf, probably (2), which shows under (8), seems to rise from W to E.

Digging (9)

(9) Seems OK, but possibly not as far as next section.

GETTING LOST ?? I'M NOT HAPPY ABOUT THIS

(10) ? OK - but may end in N. section before it reaches next section.

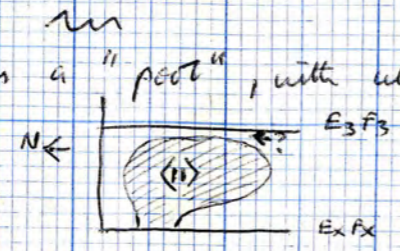
\* Taking out (9) + (10) it all seems to get different towards

the next section. Darker, grayer, a bit of white lumps, and possibly intruding twigs.

\* Possibly it's (11) that "comes up" / spreads out / gets bigger.

\* Have I over-excavated, taking out (8) + (9) + (10)? which might explain why (11) seems to go out very far? If I took out (11) with layers above, it might appear in next section

(11) when excavated, forms a "pool", with white sand in it as lumps.  
? NOT as far as next section



Digging (16)

(16) Difficult to follow. However, something with brown lumps in a grey and/or brown, goes to next section — possibly this is (16) OR possibly I over-excavated (10) and took (16) with it — alternatively, I under-exc. (10), which is really the one that goes to the next section, perhaps with (16) disappearing.

\* NOW it's all down to TURFYS of one sort and another, = (15) / (17) / (12) / (14) / (13).  
From surface, there's lots of yellow-brown sand in it. Possibly EXTRA thin intruding turf patches. (12) not very turfy from top, unless it dips with E. under S. etc. Else, but very black turfy in EXFX (re-examined just in case)

\* DOUBTFUL about (10) "UNDER" (9) as drawn in EXFX — possibly it's the other way. The "yellowy" bits of turfy was showing could be (17) rising with (12) disappearing perhaps?

\* NOW ON (18) / (17) / (12) / (14) / (13)

(12) when exc., continues thru' OK. to next section. But gets wider, and rises. Contains patches and beds of yellow-white sand (? watery). It's NOT same as (14), but a much lighter colour. Dark grey as opposed to near-black.

EXTRA \*\* Under (12) there are thin patches of whitey-yellow sand — may not show in section, but they spread OVER (14) + (17) EXTRA LAYER.

EXTRA \*\* Under the white sand patches is a layer of grey (wooden?) and charcoal with a whitish grunge which may be discolored caliche base. EXTRA LAYER (shows initially under white sand but is part of larger deposit under other layers.) Some of it shows in top of SH (15) but is probably not OVER the stake but got redeposited in stake filling. SEE ON [SH should be later judging by EXFX, UNLESS am is OVER (17)]

ASH IS (44) OF E3F3

Digging (13)

(13) Goes thru' OK. to next section but gets a bit "wider" N-S. Possibly spreads N. down slope over (14) also, UNLESS there's another layer there very similar to (13)

Digging (14)

(14) Goes through to next section OK, as drawn in EXFX.

EXTRA \*\* Under (14) is the "wooden" mentioned above, which showed originally under (12). Good patch of it plus a slight spread to south.

ASH IS (44) OF E3F3

Scale - 2 large sqs. = 1 foot

SECTION E3 F3

North



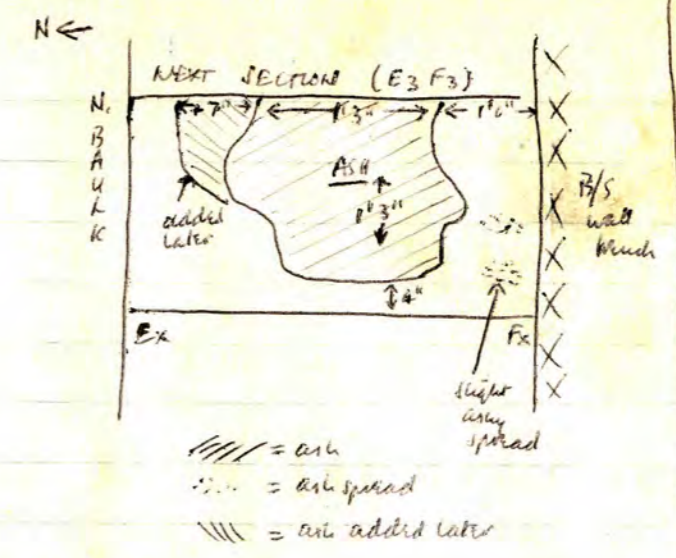
PRIMARY SILTS BELOW GREEN LINE

DITCH FILL UNDER BOTTOM ROAD

} = already excavated by hmo }  
 from E2 F2 trench Ex Fx upto here.  
 indicated E2 F2 APPROX. ONLY.  
 Exc. for E2 F2 2/3/162/11/9

DIGGING NOTES, CONT.

Sketch plan of the "ash"  
 [THIS IS (44) OF E3 F3]



// = ash  
 . . . = ash spread  
 / / / = ash added later

I'm not sure it's "ASH" - largely black and white. Prob of ch. d. plus dispersed ch. d. plus white stuff like dispersed calcined bone. Plus some grey ash. SAMPLE TAKEN - what is it? Looks almost like a loose cremation.

§ Not sure of rel. to SH (15) - was same by it, but lost removing (14)  
 § This ASH also extends 7" further N. than first drawn (added to plan above). Here it has a layer brown-pinked (woody or iron) grey? hardly used it. This thirly may be an extra layer with (17) dipping W. to E., or (16) which I missed and previously, or is it (17) itself? Surely the ash is OVER (17) (18)? Perhaps it's UNDER (17) (18) - will have to check when drawing next section, and follow (17) (18) round trench main N. section.  
 ¶ Ash is over (17) but under (14) they obviously can't be the same layer of hmf.

UNDER

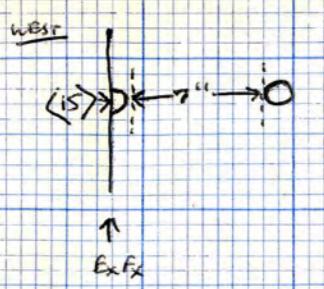
EXTRA

The ASH (as above) - on removal it's about  $\frac{1}{4}$ " to  $\frac{1}{2}$ " thick. No number in Ex Fx but it shows in next section. Has sand (yellow brown) rampled with it, as though walked on. Occasionally, it seems to be in a "surface" under (17) (18).

P.T.O.

EXFX NES

Steering under the ash, in a yellow grey to yellow brown sand, think another STAKEHOLE East of (15)?

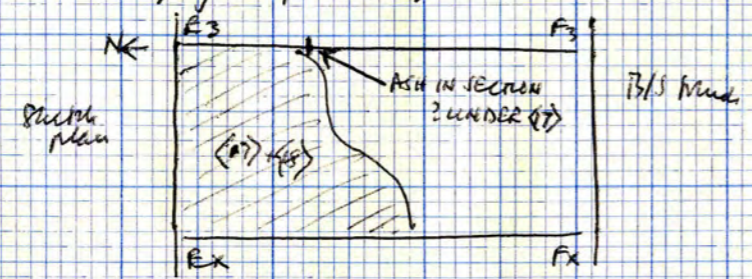


possibly came from above ash level? But didn't show?

\*\* This top of (15)/(17)/(19)/(21) looks like ONE SURFACE  
(is it the surface under (17)/(15)?)

Digging (17) + (18) (can't distinguish)

(17) + (18) when exc., looks patchy in area (under) skinned some off with underlying layer(s)?



It's good mid-grey hwt, with a shaly clayey consistency, and quite a lot of large beads of ch. cl. (sparse).

Digging (19) (this was difficult to distinguish when removing stuff over it)

At left, excavating... it fills a hollow in ExFx but delivers into a thin spread which may not show in next section



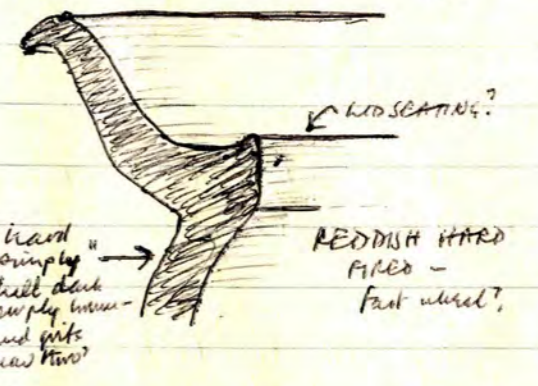
EXFX NES

Digging Notes CONT.

The "thin spread" under number of (19) was a layer rising from W to E, and I skinned off the top of it when removing underlying deposit (s)?

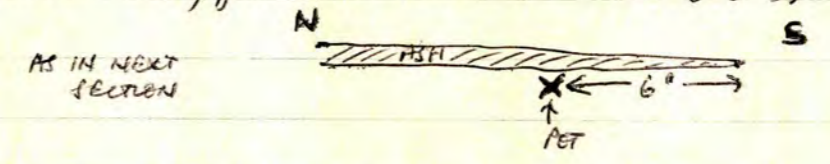
\*\*\* POT at last!

In bag labelled XY



IN (46) OF E3 F3

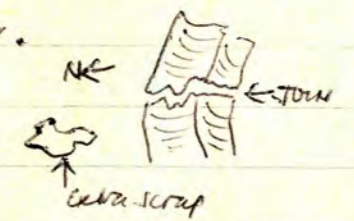
(DERBYSHIRE WARE?) Probably R-B coarse ware. But ? century (can't remember R-B well enough) In layer under ash, just out from next section (E3 F3)



Deal with in next section. Found when doing (19). Could be in (19) or below (19) - possibly in (21)?

- \* Anyway, it's UNDER hwt group, in slightly dirty
- \* grey/white/brownish-yellow sands which occur just over
- \* clean yellow primary silt.

NOT abraded, but it's a hard well-fired fabric. 2 adjoining sherds together in position but with old break. Also 2 joins facing each other. Extra small sherd just W. of them.



SHOULD BE DATEABLE (The outer surface is almost like Midland Purples or the coarse shell, brownish, which is just pre-Midland P.)

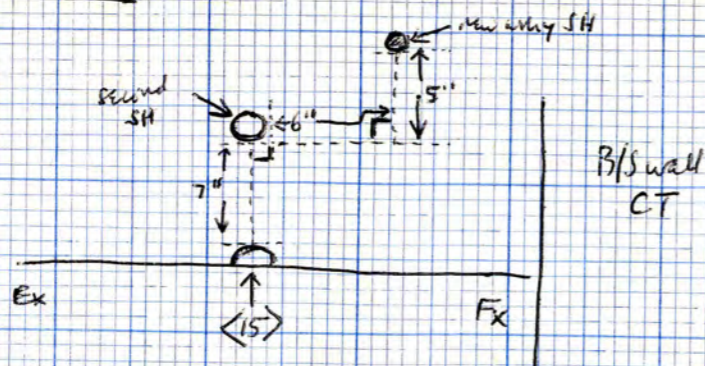
Ex Fx nos.

Digging <21> - looks OK as drawn, in area.

It has a new ashly skeletons in it

Partial plan

N ←



Possibly SH, or only a root? when excavated, only goes to bottom of <21>, and a bit "wiggly".

<21> when exc., continues OK to next section. It is in fact quite sooty, slightly lumpy. Few ch. cl. pebbles. Goes down to dirty white sands to N., and down yellow washes, clean yellow silts (hardish), to south.

Digging <22>

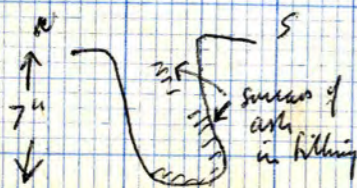
<22> when exc., goes through OK, but? shows in next section - <19> may have dipped and <22> stopped short of section.

I think <19> was OK.

? <22> OK - ditch in next section

S.H

\* After removal of <22> - the SH, 7" East of <15> shows clearly. It's a real SH. It has a tangle of ash like above-mentioned material round one side - so filling must post-date the ash. This SH was examined in section (see removal of layers after <22>) and is not as deep as <15>. Not to ditch-bottom. In toto, 7" deep measuring from bottom of ash layer in next section. Bit irregular and off vertical so? a root



filling = lumpy with ch. cl. pebbles like <15> but not "wooly". Circular, 2" diam. NOT ON PLAN. ONLY SKETCH.

PRIMARY SILTS

After removal of <22> all the rest of the layers were removed as one deposit - probably all primary silt except <23> + <24> which could well be. Removed by travelling to vertical face to see if there are any more S.H.'s "in section".

These layers seem to continue reasonably OK, but difficult to follow, so? The blue-grey clay from E2 F2 recurs in a patch but disappears before E3 F3.

NO PET.

NO MORE S.H.'s

NB. Ash "mound" slightly to N. when cleaning next section so probably approaching its limit.

END OF DIGGING NOTES UP TO E3 F3

\*\* NB.

when got to next section E3 F3 -

- A/ Just cleared over bins already excavated but (2/3/162/9/11)
- B/ Below that had to remove considerable batter (then beyond "section" of "digging notes")
- C/ N. of bins bit, had to cut back 3" to 6" straightening the N-S alignment of the section and removing a considerable batter.

Thus, the section drawn as E3 F3 is 3" to 6"

beyond the point to which the layers were followed in the digging notes. May account for some (but certainly not all!) of the changes

COCK-UPS - CORRELATE AFTER DRAWING E3 F3

AND RELEVANT PART OF MAIN N. SECTION.



G.Y. dug & recorded all the  
fill down to within charcoal. →  
I did photos -  
Then I joined G.Y. digging &  
recording etc. while dismantling  
the area ditch left for  
several weeks. C.Y.

(477)  
INTERRUPTION

STRAT. NUMBER (477) USED 56  
TO DENOTE OVEN (K0-0)

H (477) while I have been digging the ditch G.Y.  
has been excavating and recording the large  
corn-drying oven towards the East end of area H  
(under the clay floor + E wall of Building C, etc.).  
This recording appears in notebooks 14-15-16-17-18  
with layers in a new series from ① onwards.  
For the convenience of recording, though this feature  
is part of area H, all its layers etc. have  
been given a new letter prefix K. All  
finds will be marked NOT 73 FG K.

For planning convenience the area has  
also been given a feature number in the H  
series — to wit, H (477). Will have to be  
transferred to main plan from caption.

Next strat. number = H (478)

↓ DIG + RECORDED BY G.Y. AFTER FINISHING ALL K LAYERS

H (478) Feature in ditch-fill just NE of area H (477).  
Cut by area (69) and by a FH.  
See Book 18.

PHOTO'D  
EXCAVATED ~  
WILL SHOW IN  
EARLIER  
PHOTOS  
WITH FILL

Judging by fill & position, might be associated  
with area (477). Possibly dump of material  
during oven-cleaning / re-drying etc. ??  
Shallow pit with SK's, red clay, orange burnt  
clay, + ch. cl. — glazed bottom. Sherd mid (13) +  
[Could conceivably be the structure of a small oven] MORE  
LIKELY

LAYERS IN SECTION E<sub>3</sub>F<sub>3</sub>  
Section nos. only

} Drawing back  
4 pages

- ① ? should have been exc. before - possibly part of RUT.  
On top has a green clay skin. Looks mid-gray with faint Meds + ch. cl. Meds = admixture of fawn sand and pale gray to mid gray turf. Faint turf ch. cl. Much paler than ④. A bit like ③.
- ② Fawn sand with faint green clay stains. Has varying gray in it, so could = ①.  
[check stratigraphy]
- ③ Probably part of ④. Bluish turf with a pale sand admixture which makes it look lighter than ④.
- ④ Dark gray to blackish turf. Clayey texture, but a "sandy" turf. Contains various Meds / admixture of lightish sand - largely fawn + or white. Spans large ch. cl. Meds and seams. BONES = [? in it, or ON it]

- 58
- ⑤ Bluish lumpy/sally. Not through ④ - there's a white sand streak over it - but has pit similar to ④. Probably a root-hole, possibly a stake-hole. Makes it difficult to follow layers with sides, but I think they're OK.

[\* PROBABLY THIN'S "EDGE" ]

- ⑥ Both sides of ⑤. Older than ④. Equal admixture of dirty whitish fawn sand and bits of grey lumpy. Few pieces of ch.d.

- ⑦ Both sides of ⑤. Odd stuff. Grey/fawn sand to sandy packed with grey lumpy. Faint whitish sand nodules. 1 or 2 pieces of ch.d. But like ⑥ but less white sand, i.e. darker & grayer.

- ⑧ Odd stuff. Very gritty sand - looks basically pale grey with white & brown flecking. I think largely a very gritty whitish fawn sand mixed with hard grey sand (or?? lumpy) with occasional minute pieces of charcoal and minute hard gritty dark brown pieces (don't know what they are.)

(9) Darker greyish and more brown than (8).

Again, very old stuff.

Very gritty and a bit lumpy. Largely a gritty grey-brown sand with faint whitish sand nodules, small pieces of hard dark grey sand and a few of clayey / lumpy. Lots quite brownish from old brown nodules. Occasional charcoal.

Main APPEARANCE is mid-grey, with whitish brown nodules and strong brownish nodules.

(10) Dark grey sandy (? a bit lumpy) with faint white sand nodules.

(11) Gritty light grey to mid-grey sand. Faint brown + white nodules. 1 or 2 ch. cl. nodules.

(12) Grey-brown sandy with whitish nodules.

(13) Dark grey sandy / lumpy with faint whitish nodules. Like (10)

(14) Similar (12). Grey-brown sandy with whitish nodules. More grey in it than (12)

(15) Hard + lumpy. Mixed grey hard + gritty brown-grey sand. Definite brownish lumpy / nodules.

60  
①⑥ Gritty whitish-brown sand mixed with gritty grey sand. Less grey than ①① but more grey than ①⑨.

①⑦ Fawn-grey sandy with whitish nodules. Like ①②.

①⑧ Dark grey sandy (? slightly lumpy) with faint whitish-brown nodules. Similar ②① but slightly different I think - slightly more silty content, but could be same layer.

①⑨ Furry stuff. Very gritty admixture of hard grey sand and dirty whitish-brown sand with brown pecking / nodules. 1 or 2 pecks of ch. cl.  
In appearance, largely light grey to mid-grey with brown pecks.  
It's a mixture between ⑨/①① in content.

②① Dark grey sandy (? slightly lumpy) with faint whitish-brown nodules. Similar ①⑧ + maybe same.

②② Like ①⑥. Mixture of gritty whitish-brown and grey sand.

②③ Grey-brown sandy, fairly lumpy pecked.  
Several lobes greyish with white sand nodules (faint)

IT'S ALL GOT V. DRY MAKING THESE DESCRIPTIONS  
(WIND + SUN)

- ②3 Rather like ②2 + possibly same. Just faintly darker. Slightly turky dark grey-brown sandy with whitish nodules. Stratigraphically probably with ③3
- ②4 Fine packed mid-grey turky - rather like ①
- ②5 Admixture of grey turky + brown sand with whitish nodules. Small brown nodules + tiny ch. cl. Generally looks pale mid-grey with brown / brown tints. Rather like ①5 as a mixture.
- ②6 light grey brown hard sand.
- ②7 Grey sand (y) with brown + yellow nodules.
- ②8 Odd mixture. Turky mixed brown + white sand heavily packed with dark grey turky bits. Several large round lumps of grey black turky. Sparse large ch. cl. nodules. Looks generally mid- to dark-grey with strong whitish brown nodules.
- ②9 Big lumps + lumps of white sand in a light grey to brown mixture of sand and sandy. Lot of pebbles.
- ③0 Could be ②9. Pale grey to mid grey sandy with white sand nodules. Some pebbles. Darker than ②9 + ③1.

(31) Could still be (29)/(30). Light grey to mid-grey sandy with white sand admixture/arkoses. Sparse small ch. cl. pebbles. Similar (30) but faintly paler in colour.

(32) Similar (31) but darker - similar texture but seems to be more - Medial giving a slightly darker grey. Looks faintly whitish mid grey.

(33) Looks dark grey with whitish arkoses. Basically a mixture of dark grey turf and fairly white sand. Small pebbles of charcoal.

(34) Light grey turf with slight fairly white sand admixture

(35) Pale grey turf. Slightly sandy but less so than (34)

(36) Light grey turf. Similar (34).  
(34) + (35) + (36) could be all one layer.

(37) Mixture of turf and yellow-brown sand.  
? it being over (38). Could go either way. though not very different.

(38) Mid-grey turf lightly pebbled with fairly white sand. No ch. cl. - darker than (34)/(35) but paler than below.

(39) Blackish grey turf with 2 or 3 large beds of ch. cl.  
has white sand separating it from (35) + part from (41).  
Can't distinguish from (41) when no white sand and no  
(40).

(40) Lightish grey turf faintly bedded with fine  
sand. Many brown beds. Few large beds of  
ch. cl.

(41) Blackish grey turf with large beds + seams  
of charcoal. Some white sand in it at N. end.

(42) Between (40) + (43). Dark brown-grey sand.

(43) Light grey to mid grey turf. 1 or 2 smallish  
beds of ch. cl. Paler than (41), darker than (40).  
white sand beds in at S. end.

NEXT - THE ASH

(44) ? Ashy - mixed deposit of blackish largely dissolved  
charcoal, greyish material like pagash, and a  
whiteish silty deposit like dissolved calcined bone.  
SAMPLED. Flecks of it seem to extend N. under (43)

(45) Turfy - bedded yellowish-white-grey sand.



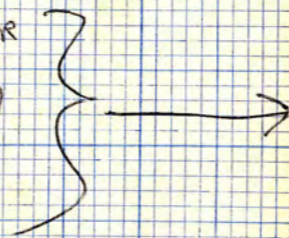
ALL K LAYERS + FEATURES DUG BEFORE  
CONTINUING (SHOULD HAVE FEATURE SEQUENCE)

\* NB.

9/4/74

SEE NOTEBOOK 18 FOR SMALL  
PH K (206) WHICH HAS TO  
GO ON MAIN PLAN OF H.  $\nabla$ 'd BUT NOT ON  
PLAN YET.  
POSSIBLY WITH OVEN H (477)

INTERRUPTED FOR  
WORKS DOING  
OVEN H (477)



\* 9/4/74 - Long interruption of about 3 weeks to 4 weeks or more whilst  
dealing with corn-drier H (477). The last week or two have been  
sun + wind and no rain - everything is now a dry dull light  
grey-brown mess, dust + concrete, impossible. Also lost the thread (was up to (49))

(46) Lightish grey lumpy heavily mixed with dirty  
whitish brown sand. More sand than lumps. Few pebbles  
of charcoal. May = (45). Some yellow sand in it.  
POT (E-B - see excavation notes)  
? relationship to (47) - could be same stuff.

+

(47) Turky-pebbled Pannu whitish grey sand.  
May = (46)

(48) Dirty light whitish/yellowish/grey sand.

(49) Mixed lumpy dirty yellowish-whitish sand with some  
light grey sand and a few lumpy pebbles.

(50) The following described after several weeks  
while dirt has got thoroughly dry. Sprayed.

(50) whitish-grey sand, faint yellow pebbles

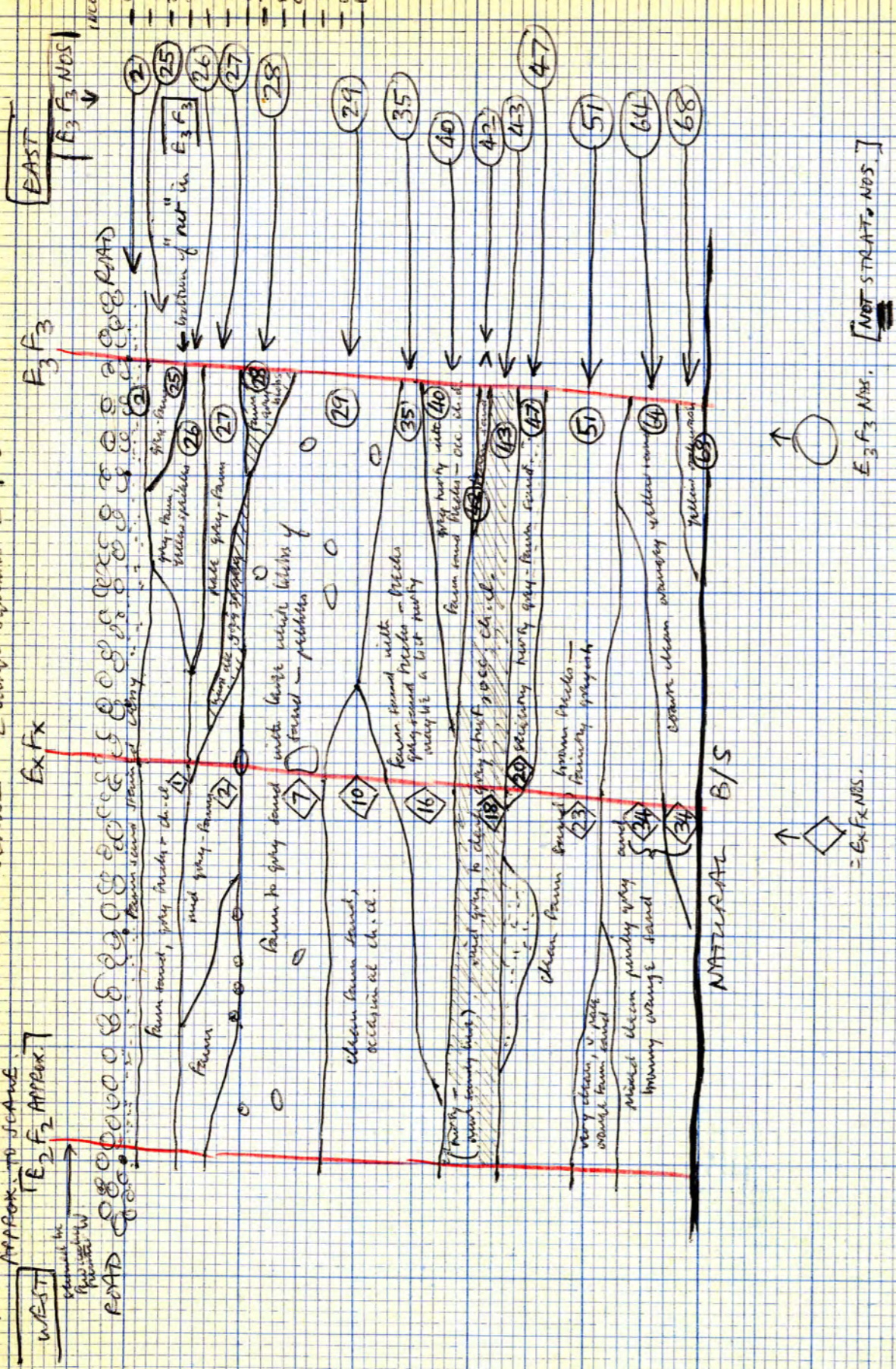
(51) Pannu whitish grey sand - less yellow than (50)

(52) Pale whitish grey sand ? = (51)

(53) whitish grey sand with dark grey sand pebbles.

- 65
- (54) Dirty pale yellow sand from b/s
  - (55) Pale yellow sand from b/s with grey sand lenses.  
but crusty.
  - (56) Compacted crusty orange yellow redeposited b/s
  - (57) Crustly yellow redeposited b/s
  - (58) Pale brownish yellow sand with dirty grey sand lenses.
  - (59) Hard dark brown sand with orange sand pebbles
  - (60) Coarse white sand
  - (61) Grey-white sand
  - (62) Orangey-grey sand
  - (63) Fairly orangey grey sand
  - (64) Clean fairly greyish orangey-brown sand
  - (65) Hard clean brownish orange sand
  - (66) Whitish orangey-brown sand
  - (67) Clean fairly yellow orangey-grey sand.

PART OF MAIN NORTH SECTION - SCALE 2 large squares = 1'0"



- (68) Clean coarse yellow siltywash.
- (69) Finely orange, whitish-grey sand.
- (70) Hard crusty clean orangey sand with faint white + yellow sand admixtures.
- (71) Clean hard silty pale orangey sand with yellow, white, + grey sand admixtures.

NOS (50) TO (71) NOT RELIABLE DESCRIPTIONS. SUBTLE DIFFERENCES, OBVIOUS WHEN WET + CLOUDY, JUST DON'T SHOW IN DRY + SUNNY WEATHER, EVEN AFTER SPRAYING.

\* TO CONT. INTO MAIN N. SECTION, THEN CORRELATE TO EX. F. NOS. NUMBER FINDS.

### H (479) PIT

Just N. of F/S Muck. Excavated + recorded by G.Y. See notebook 18. NOT PHOTO'D prior to excavation but should be an earlier shot. PHOTO'D - sectioned N-S, and fully excavated.

INTERRUPTION

\* Easter weekend 13/4/74 - 16/4/74 inclusive.  
Digging the ditch (TURNS) - "blocks" NOPQ and JKLM.  
See work 19.

NB. Exfx to E<sub>3</sub>F<sub>3</sub> not yet completed.

STRATIFICATION NOS. USED (ALL H)

H  
↓

- ✓ (479) } PIT - SEE BOOK 18 - 94
- ✓ (480) } DITCH - BLOCK NOPQ - SEE BOOK 19
- ✓ (481) }
- ✓ (482) }
- ✓ (483) }
- ✓ (484) }
- ✓ (485) } DITCH - BLOCK JKLM - SEE BOOK 19
- ✓ (486) }
- ✓ (487) }
- ✓ (488) }
- ✓ (489) }
- ✓ (490) }
- ✓ (491) }
- ✓ (492) }
- ✓ (493) }
- ✓ ~~(494)~~ (494)
- ✓ ~~(495)~~ (495)
- ✓ (496)
- ✓ (497)
- ✓ (498)
- ✓ (499)
- ✓ (500)

(490) to (500) inclusive  
all section EXFX  
(to E<sub>3</sub>F<sub>3</sub>) -  
THIS NOTEBOOK.  
Excavation + strat. then  
continue in Book 19  
(same in book 18)

\* Possibly it was largely OK for most of the way from ExFx to E<sub>3</sub>F<sub>3</sub> but got involved with extra layers just west of E<sub>3</sub>F<sub>3</sub>. Particularly as I cut the section back to give E<sub>3</sub>F<sub>3</sub> after finishing following the layers.

\* GONE or partly GONE <sup>upto</sup> ~~to~~ E<sub>3</sub>F<sub>3</sub> before I started —

- ① — GYLS out
- ② — OK — see N section.

TURNS

③ ④ ⑤ ⑦ ⑨ ⑩ ⑫ ⑬ ⑭ ⑯ ⑰ ⑱

⑳ ㉑ ㉒ ㉓ ㉔ ~ and their edge (red line as E<sub>3</sub>F<sub>3</sub>) may even have been further North.

DONE AFTER LONG INTERRUPTION WITH OVEN H (477)

Possible correlation of ExFx to E<sub>3</sub>F<sub>3</sub>

\* It's clear from the dipping sections that I've gone wrong dipping this — thought I was following layers OK, but obviously wasn't.

NO STRAT. NOS. GIVEN TO LAYERS EXCEPT THOSE WITH FINDS.

This is possibly what I did —

[NB. Turns already excavated 2/3/162/11 + 9 from E<sub>2</sub>F<sub>2</sub> through ExFx upto E<sub>3</sub>F<sub>3</sub>]

< > = ExFx nos ~ ( ) = E<sub>3</sub>F<sub>3</sub> nos.

③ must have been part or all (33)

④ part of (33)?

⑥ — (20) + (22) (+ some of (31) + (32)?)

① — (25) (26) (24) — some (11) + (9) — (6) + (8) + some (7)

② — (27), part of (28) (in N. section) { (27) + (28) in E<sub>3</sub>F<sub>3</sub>, + bottom of (9), (11) + (15), (10) + (13) + (16) upto red line.

⑤ — (19) + (20)/(22) <sup>upto red line</sup>

⑦ — (29) (30) (31)

⑧ — OK. didn't go as far as E<sub>3</sub>F<sub>3</sub>. Replaced by (32) which was over it.

⑨ — OK. not as far as E<sub>3</sub>F<sub>3</sub>.

⑩ — OK. ends in N. section

PTD, CONT.

CONT.

<11> - OK - not as low as E<sub>3</sub>F<sub>3</sub>

<16> - OK. = (35) (followed in N. section). Probably took (34) with it - and (36)??

BLUE LINE - ALL DOWN TO TURFS

<12> + <13> found as if dug wrongly - should have done <13> before <12>. Don't know what I confused with what, but probable equivalents are . . .

<12> must be (39) (#38?)

<13> must be (37)

(40) EXTRA LAYER

<14> is (41)

<18> (+<17>) must be (43)

(42) EXTRA LAYER

<20> is (47) (North section)

<19> = (46)?

<21> + <22> must be same as all (45) (48) (49) (53) (52) (50)

<23> is (51) (North section)

ORDER OF EXCAVATION FROM EXFX TO E3F3

← FINDS

- 3
- 4
- 6
- 1
- 2
- 5
- 7
- 8
- 9
- 10
- 11
- 16
- 12
- 13
- 14
- 17
- 18
- 19
- 21
- 22

- X
- X
- X
- ✓ BONE
- ✓ TEETH
- ✓ PLINT PLAKE + POT
- ✓ POT
- ✓ BONE
- X
- X
- X
- X
- ✓
- ✓
- ✓
- ✓
- X
- X
- ✓
- X
- X
- X
- X

----- BLUE LINE -----

12 } BUT REVERSE THESE WHEN GIVE  
13 } START NOS.

\* ASH UNDER 14 } <sup>ITS</sup> ~~ALSO~~ ALSO UNDER  
= 44 of E3F3 } 17 18 = 43 of E3F3

\* SH under ASH but could have come from higher level

17 } 18 } 19 } POT OTHER

POT XY IN 46 OF E3F3

SH in 21

- 21
- 22

PRIMARY SILTS (GROUP)

SAMPLE ONLY



CONT

24 probably was a primary silt. Did not go to next section?

The rest are PRIMARY SILTS which I didn't attempt to sort out - excavated as a group.

44 THE ASHY LAYER, is extra. This was dug out.

POT XY is SEVERELY STRATIFIED = 46 of E3F3 (bury found under AS 44)

\* I haven't time to sort this out now. But section and digging notes from EXFX to E3F3 need thorough study and sorting out.

Possibly a more detailed, more exact correlation can be sorted out.

Need to get ditch finished, so will start again at section E3F3 and try to follow the layers from there. C.P.

LAYERS WITH FINDS BETWEEN EXFX AND

E3F3

STRATIF. NOS.

H 410 Layer no 1 in EXFX.

↓ Don't be secure as went into other layers.

BONE only

I found all these when thinking I was taking layers of EXFX. So will all be a bit dubious UNLESS otherwise stated.

491 Layer no (2) in ExFx

Should be secure.

Went into several layers.

BONE (animal tooth) only.

492 Layer no (5) in ExFx

Should be secure as went into

several layers — but not too bad — gives  
an approx. level.

FLINT FLAKE

POT small body sherd coarse handmade blackish fabric.

493 Layer no (7) in ExFx

Should be OK. Though went into

several layers (see E<sub>3</sub>F<sub>3</sub>) they're all

of similar nature and probably all one deposit.

POT body sherd coarse handmade greyish fabric.

494 Layer no (8) in ExFx.

This should be OK.

BONE only.



(495) Layer no (13) in ExFx.

This should be OK. ~ = (37) of E3F3  
POT <sup>body</sup> over/should coarse handmade. Goby to black fabric.  
Smooth inner + coarse outer surfaces.

(496) Layer no (12) in ExFx

Should be OK. ~ = (39) (+? (38)) of E3F3

PROVES

POT 3 coarse handmade shreds. (shredded) + two body (different)

(497) Layer no (14) in ExFx

This is OK. ~ followed it, = (41) in E3F3

BONE only

(498) THE ASH

This is OK. followed it, = (44) in E3F3

SAMPLE ~ what is it?

(499) Layer no (15) in ExFx.

This is OK. = (43) in E3F3 (followed in N-section)

BONE

(500) ~~Ref~~ Respond to as POT-XY

This is DEFINITELY OK, and SECURELY STRATIFIED.

Just cut from E3F3 and followed layer into E3F3.

= (46) of E3F3.

END OF ExFx TO E3F3 ↓ EXCAVATION CONT. IN BOOK 19

(500) \*\*\* THIS SHOULD BE DATEABLE.

GOD (R-B) RIM →

? This RB as its very coarse gobby simply fabric. But will wash and very hard-fired. Consider it, I suppose, be anything else but R-B.