

CHARIOT BURIAL NUMBER 2

- 200 Grave of 002 (chariot burial found by hand 1.7.84).
201 Box shape in fill.
202 Pole stain.
203 Axle stain.
204 East wheel.
205 West wheel.
D ✓ 206 Bronze strapping (whip handle?).
D ✓ 207 Bronze strapping (whip handle? - with 206).
D ✓ 208 Bronze terret (number 1 from north).
D ✓ 209 Bronze terret (number 2 from north).
— 210 Iron object (near west nave).
— 211 Iron object (on line of axle, west side).
— 212 Iron object (on line of axle, east side).
— D ✓ 213 Bronze nave band (west wheel, upper).
— D ✓ 214 Bronze nave band (east wheel, upper).
— 215 Iron tyre (east wheel 204).
— 216 Iron tyre (west wheel 205).
— D ✓ 217 Iron pin ("involute").
— D ✓ 218 Iron mirror.
— D ✓ 219 Bronze/iron horse bit (westerly of two).
— D ✓ 220 Bronze/iron horse bit (easterly of two).
D ✓ 221 Bronze case with attached chain ("bean tin").
— D ✓ 222 Bronze/iron lynch pin (northerly, lower).
— D ✓ 223 Bronze/iron lynch pin (southerly, upper).
224 Skeleton (human).
— D ✓ 225 Bronze terret (number 3 from north).
— D ✓ 226 Bronze terret (number 5 from north).
— D ✓ 227 Bronze terret (number 4 from north).
D ✓ 228 Iron pin (beneath horse bits).
229 Leather remains (under pole shaft impression).
— 230 Iron dog.
— D ✓ 231 Iron ring. *Cd.*
— D ✓ 232 Bronze nave hoop (lower, east wheel).

- 3 ✓ 233 Bronze nave hoop (lower, west wheel).
234 Pig bones (northerly quarter).
235 Pig bones (southerly quarter).
236 Yoke (incorporates terrets).

237 *done*

1. Enclosure:

A ditch which was nowhere greater than 1.5 m wide (and usually c. 1.1 m) enclosed a platform 9.6 m square with some rounding off of the corners. The maximum depth of the ditch was 0.37 m.

2. Grave:

The grave was sub-rectangular with a narrow, centrally placed, northern extension (in which was the pole stain 202). It measured 3.69 m in length from north to south, of which c. 1.05 m was the northward extension only c. 0.75 m across. The body of the grave was 2.57 m wide from east to west and attained a maximum depth of 0.73 m. The sides were sheer or even undercut on the south-east. At floor level the grave was 3.58 m in overall length (2.40 m to the pole slot) by 2.34 m.

The outer parts of the filling consisted of clean chalk gravel, but in the centre was an area of darker coloured gravel which was rectangular in plan. This was at first thought to be the extent of the central grave and an oval area of similar soil and gravel which extended northwards from it had the appearance of being a smaller secondary grave. On excavation it became clear that the rectangular area represented infill of a central structure following its decay. Elsewhere in the filling actual decomposed timbers were revealed by lines of very clean, white gravel (pole 202, axle 203, parts of outside of 201).

3. Structures within the Grave:

The contrasts in fill just described, enhanced in some instances by the survival of metal fittings, allow the following structures to be identified:-

201. A central box shape.

202. A centrally aligned pole.

203. An axle.

204 - 205. Two wheels, laid on the east and west sides.

i) Structure 201:

When first planned, 0.4 m below the gravel surface, this stain measured c. 1.82 m north-south by c. 1.20 m east-west. On the northern and western sides, especially, the position of former timberwork was represented by clean gravel, often inclined or on edge, in lines 0.08 m to 0.11 m thick. At a depth of 0.45 m to 0.50 m a line of clean gravel c. 0.07 m wide ran parallel to the western side and at a distance of 0.21 m inside it.

Remains of this rectangular structure ceased to be visible at a depth of c. 0.50 m, which coincided with the upper surface of the wheels (204, 205) where the structures met.

ii) Structure 202:

This was a line of loose very clean gravel which formed a line at least 1.10 m long and 0.07 m wide and which filled a "U" shaped depression. It was situated slightly to the west of centre in the northern extension of the grave. It was not aligned with the sides of the central structure 201, but it was approximately at 90° to the axle stain 203. This is believed to have been a pole.

iii) Structure 203:

Below c. 0.50 m, at the southern end of the grave, traces were seen of a linear structure lying at right-angles to 202 and parallel to the southern end of the grave. At the west end the stain, seen as very clean, loose, gravel, tapered from a thickness of 0.10 m to 0.04 m at the end over a distance of 0.40 m. At the east end the thickness appeared to be c.

0.09 m at a depth of 0.65 m. In the middle the structure appeared to be much broader, c. 0.28 m, possibly c. 0.39 m. The parallel lines which suggested this structure were not parallel with the overlying traces of 201. Two metal fittings (nails?) were found on the line of the axle (211,212). 211 was 0.40 m from the west end, 0.97 m from 212. 212 was 0.57 m from the east end. The overall length of the structure was 1.95 m.

iv) Structure 204 (East Wheel):

The principle components of the wheel were metal: an iron tyre (216) 0.88 m x 0.84 m (check), two bronze nave hoops (upper:214, lower 232) and an iron dog (230) originally fastened to the inner face of the felloe. Wooden elements were represented by sections of the wooden felloe and one spoke junction preserved as corrosion products and of four spokes suggested by lines of loose, clean gravel. These last suggest a twelve or possibly thirteen spoke wheel. From the vertical relationship between the nave bands the hub, which was 0.13 - 0.14 m in diameter, was at least 0.23 m long. The wheel rested on the hub and on the rim on its western side.

v) Structure 205 (West Wheel):

Represented by an iron tyre (215), two bronze nave bands (upper:213, lower:233) and (possibly) a piece of iron (210). The wooden felloe survived as iron replacement in places, but no spokes were convincingly preserved. The tyre as 0.84 m x 0.86 m (check) and the nave bands suggest that the hub was 0.12 to 0.13 m thick and at least 0.18 m long. Present sections suggest that the felloe was light and only c. 0.03 - 0.35 m from the inner to outer faces. The wheel rested on its hub and its rim on the eastern side.

4. The Burial:

The human remains were completely contained within the rectangle representing 201. The body was flexed on the left side with head to north. The position of the right foot (bent down at an unnatural angle) suggests that it could have been constricted by the presence of the axle (203). The arms were extended in front of the body, but were bent back towards the body at an inconvenient angle. The remains lay in the space between the two wheels.

5. Grave Goods:

i) Chariot Fittings:

The structural remains of the vehicle incorporated some metal fixtures which have survived. On the line of the axle were two pieces of iron (nails?) which retained the shape of wood grain (211, 212). The two wheels were bound with iron tyres (215, 216) and the hubs had been bound with sheet bronze nave bands (213, 214, 232, 233). A piece of iron (a nail?) could have been embedded in the hub of the west wheel (210), and an iron dog (230) had been pinned to the felloe of the east wheel. Two lynch pins (222, 223) of iron and bronze were found between the body and the site of the yoke.

ii) Horse Harness:

Five bronze terrets (208, 209, 225, 226, 227) were decorated with coral (?) studs and extended in a line 0.95 m long; this must represent the position of the yoke which lay on the west side of the body.

Two 3 link horse bits (iron links with bronze terminals and rein rings) were found to the west of the head with rings pointing upwards.

Two pieces of sheet bronze binding (206, 207) covered fibrous organic remains which could have been a whip handle (on analogy with Garton Slack in the identical position). These were at the northern end of the yoke position, next to the northernmost terret.

An iron ring, with bronze coating, was found on the line of the yoke, to the south of the western nave hoops (213).

iii) Personal Objects:

Three additional items were found to the west of the back and shoulders of the skeleton, between the yoke and the body. Of these (228) an iron pin (or needle?) was beneath the horse bits, as (partly) was an iron mirror (218). Over the mirror was extended a bronze chain which was attached to a decorated hollow bronze case or cylinder (221). A fourth piece was an iron and bronze pin decorated with ? coral which was found in front of the chest (217). These items are unusual in that additional objects (beyond horse harness and fittings) are rare, but c.f. Lady's Barrow, Arras for another mirror.

iv) Food:

The forehalf of a pig had been split and the two quarters were placed over the body, with the skull halves pointing westward (234, 235).

6. Order of Burial:

The wheels underlay all objects which could be related to them. The axle stain was visible as a mark below the level of the tyres, but the pole stopped short of the northern end of the central structure (201) although its continuation would not pass between the two wheels but probably over the western.

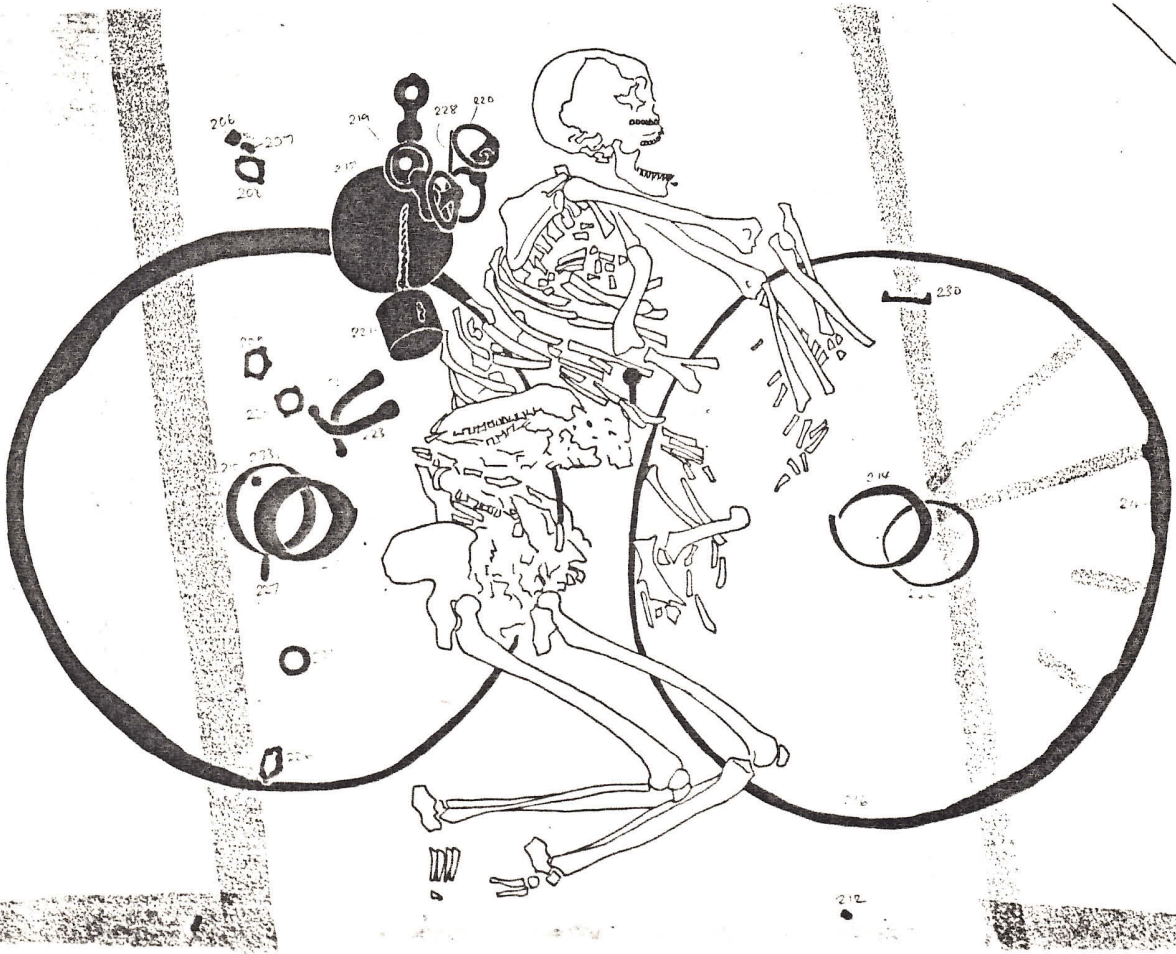
The relationship of the central chamber (201) to the body and all the objects within that area is uncertain. It certainly seems to have covered and contained them, but could also have had a wooden base which underlay them.

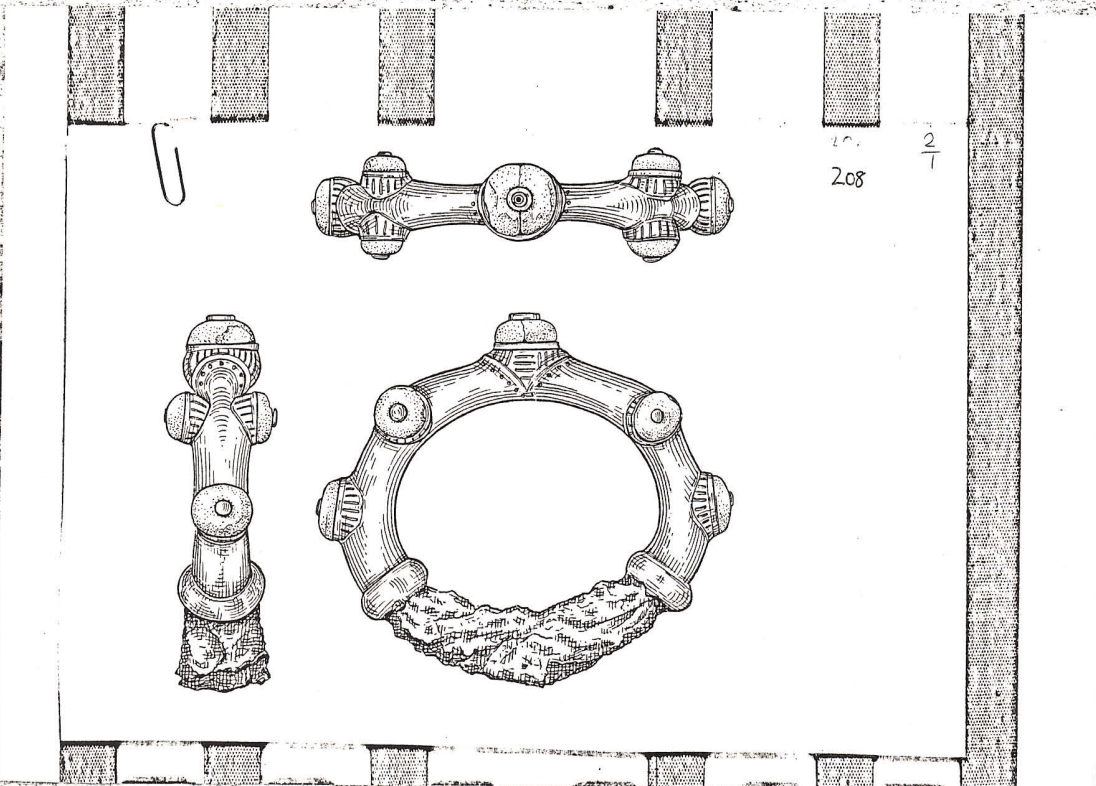
The pin (217) and the pig bones (235) certainly followed the body into the grave. It is likely that so too did the horse bits, mirror, pin/needle (223) and case (221). The wooden yoke, "whip", harness ring and lynch pins could have preceded the body, but it seems likely that all these objects were placed in the grave, inside 201 after the body had been arranged.

The covering of the burial chamber would have been put in place and the grave backfilled. The darker, looser gravel which filled this chamber would have arrived there after the roof collapsed and would have been partly derived from the covering mound.

CHARIOT BURIAL NUMBER 2 : NOTES ADDITIONAL TO DESCRIPTION

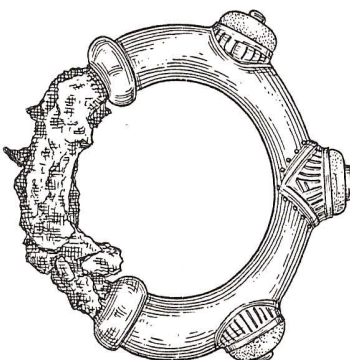
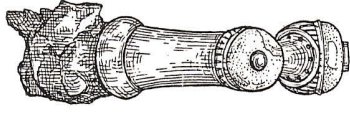
1. Wood remains preserved on edge of tyre of 215, north side, beneath mirror 218. Running parallel to yoke, not on line with any other finds. What is it?
2. Organic material (22a) from pole/slot.
3. Spokes on east wheel c. 2 cm thick where meets felloe.



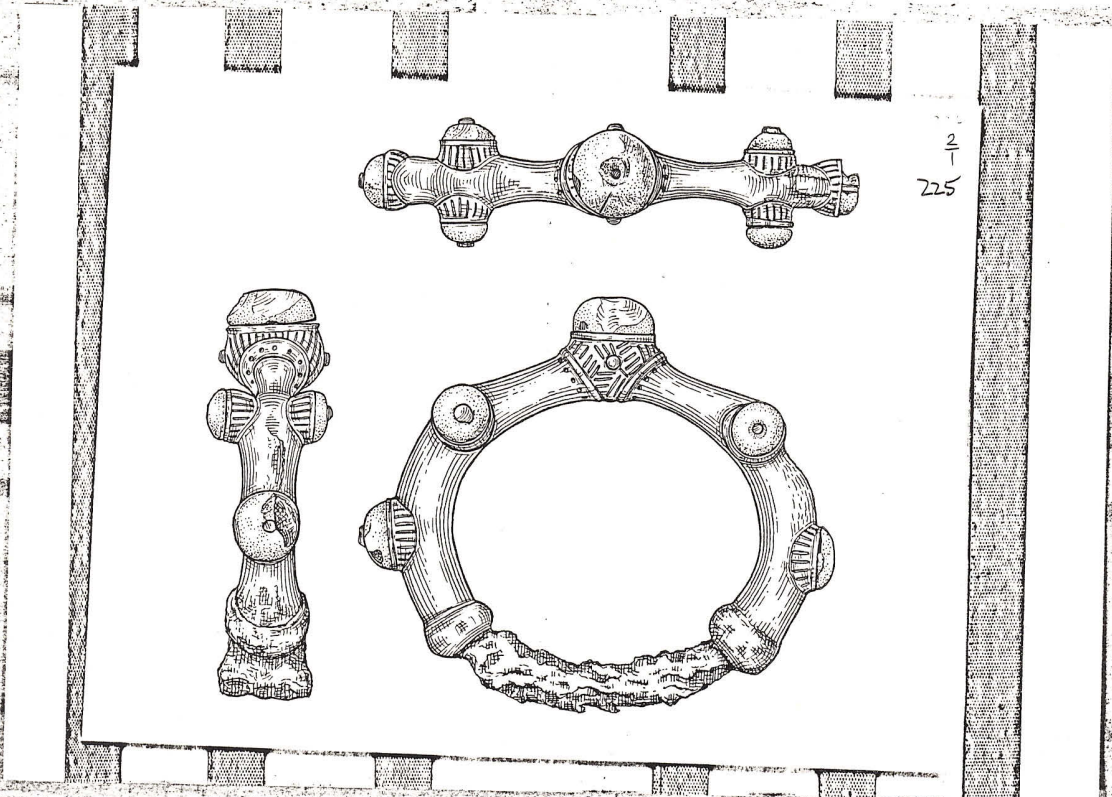


208

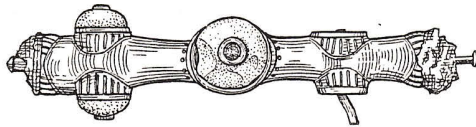
$\frac{2}{1}$



209
1/2

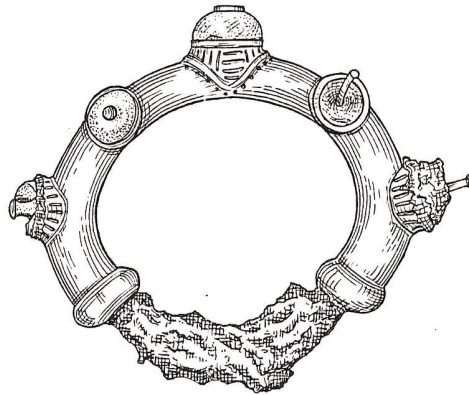
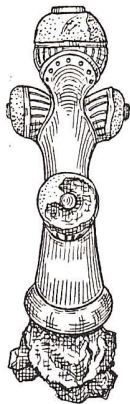


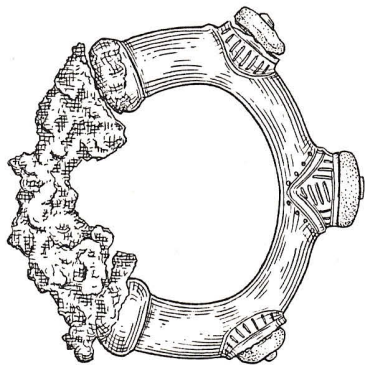
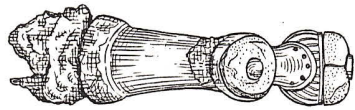
2
1
225



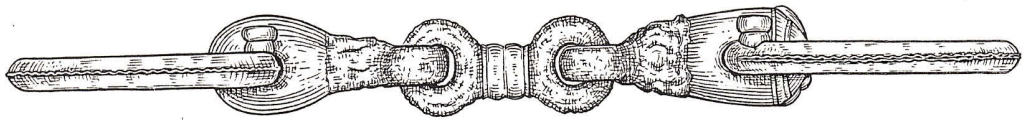
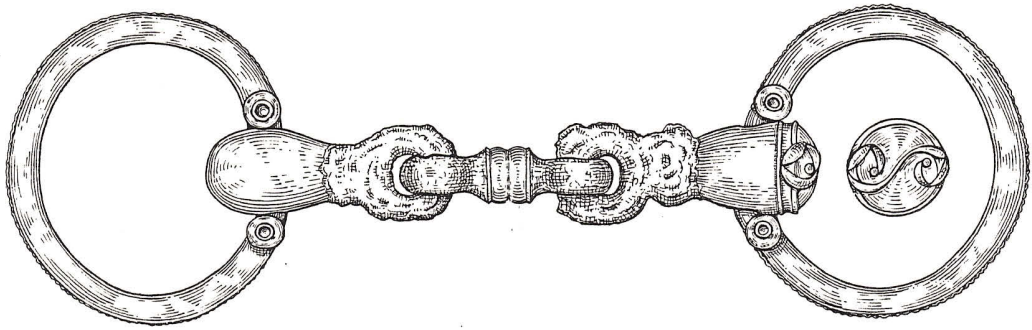
226
2
T

226

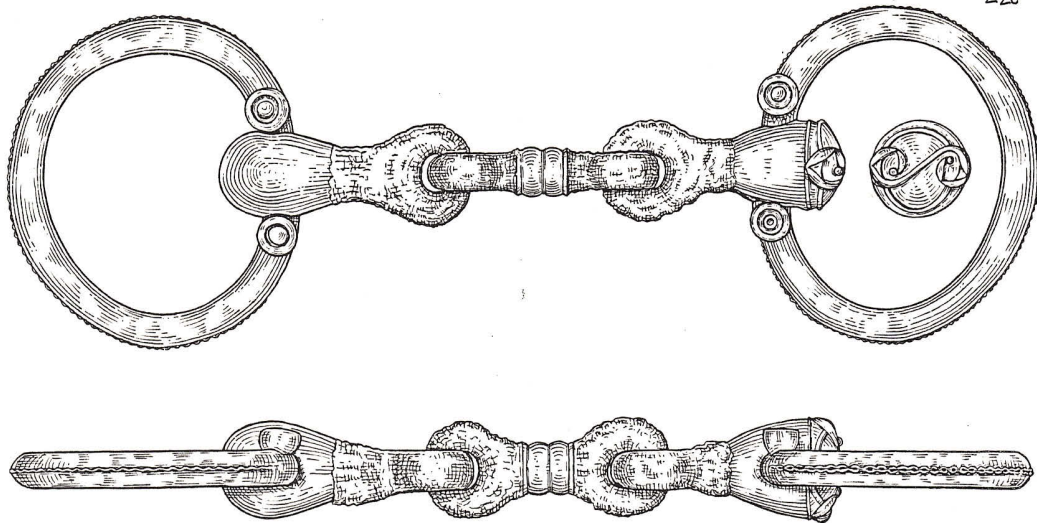


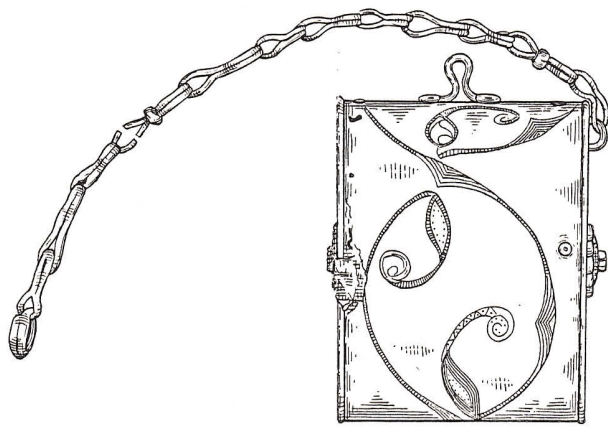


2
227

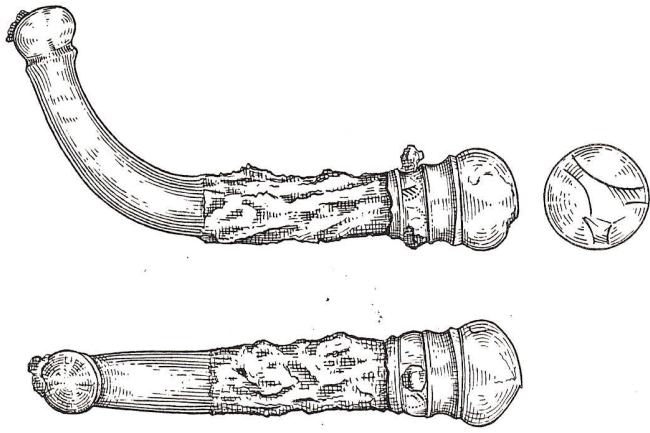


220

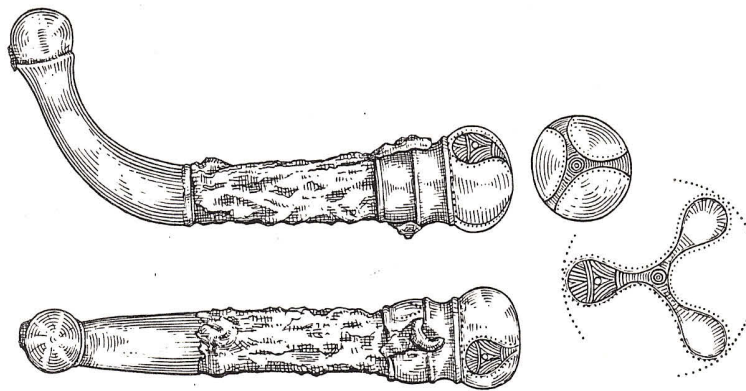




221



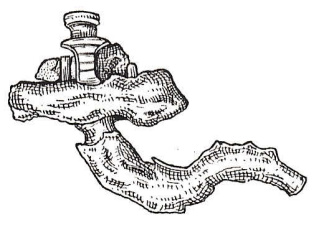
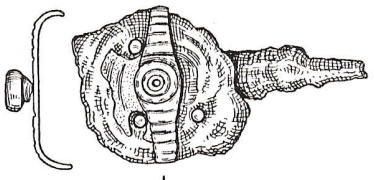
Wetmore - Linder pin
222
Jan 1914



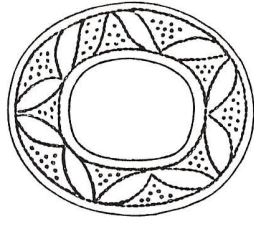
W. L. ...
1922
...

217
2/1

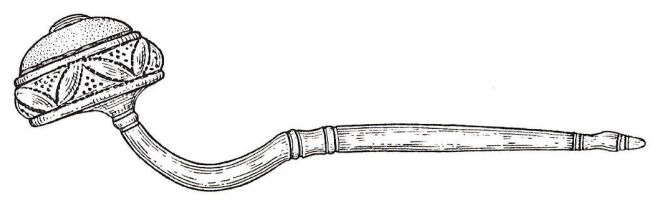
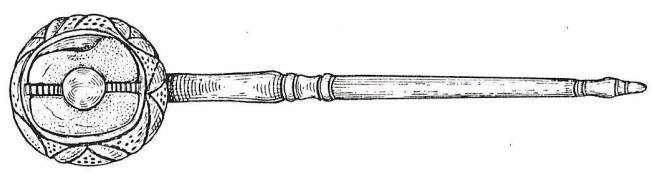
Wetung Slack - (gold pin)



217



23477

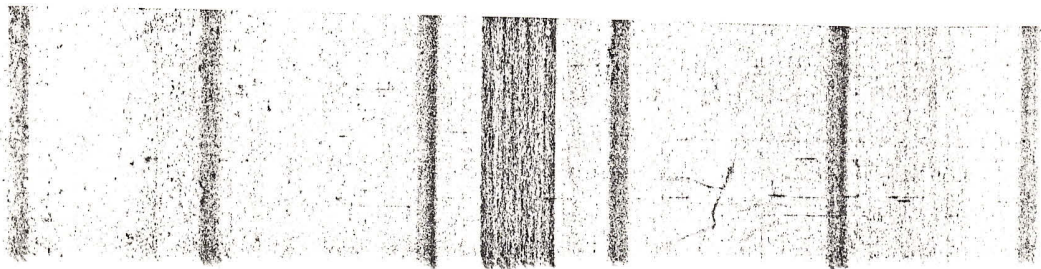
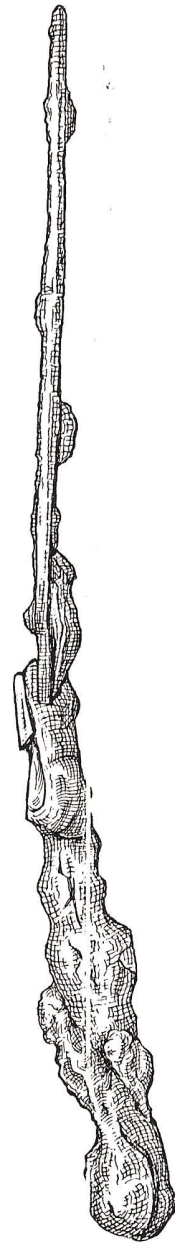
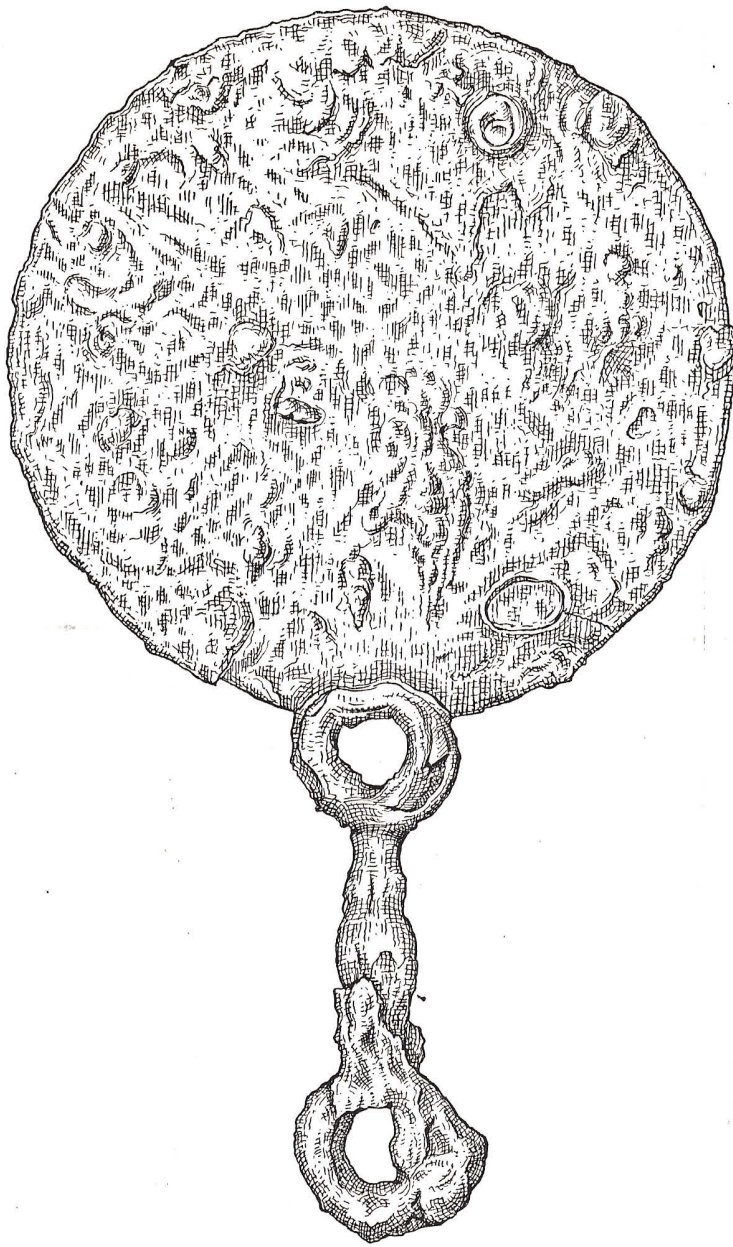


Not Wetung; a companion piece
? from Fort Hill

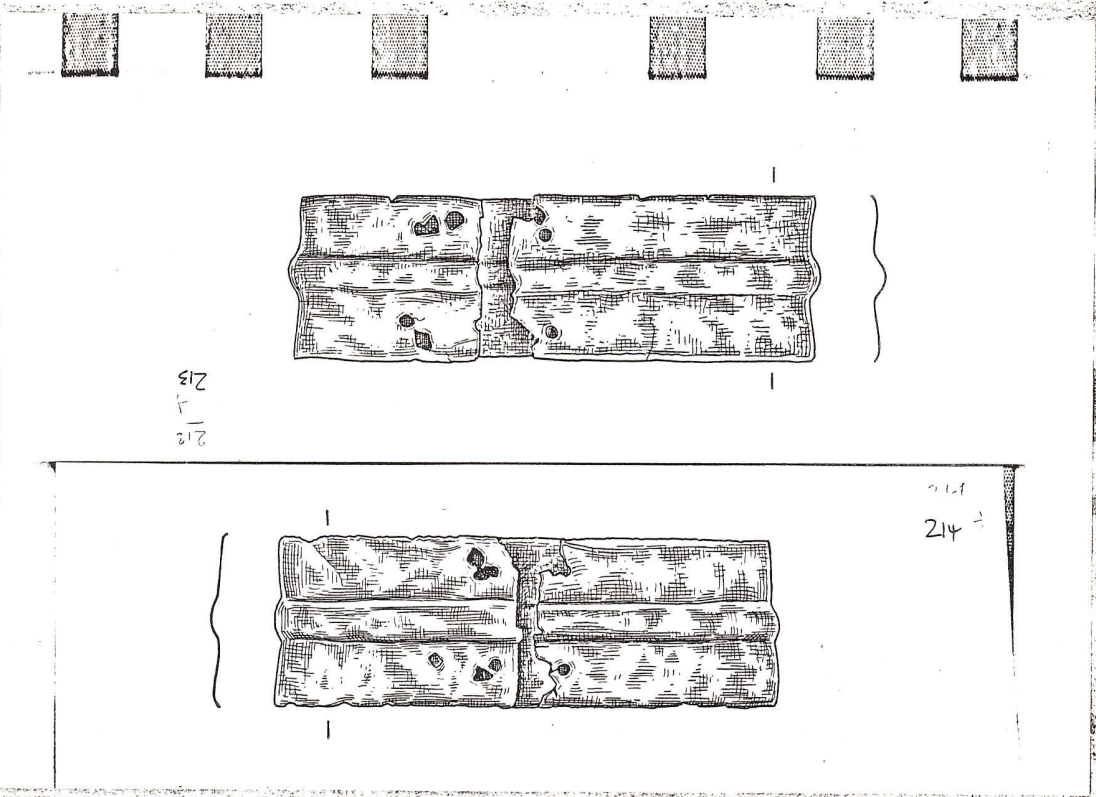
23477 T

2/1





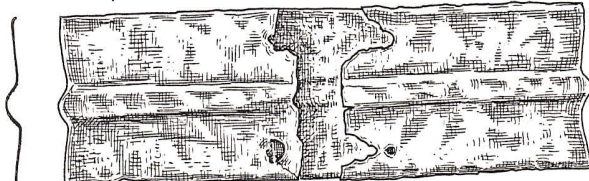
218



213
A
212

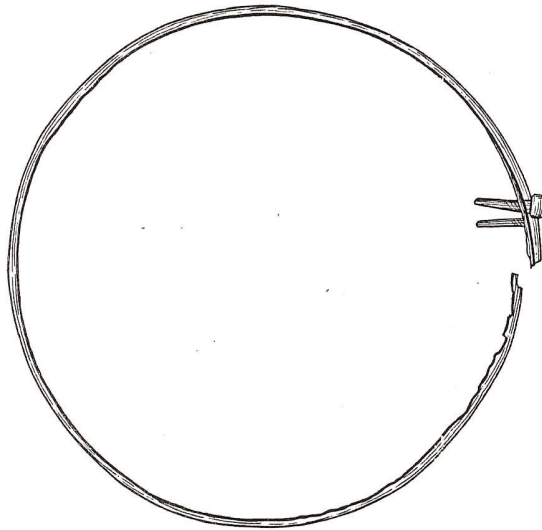
214
B

232



232

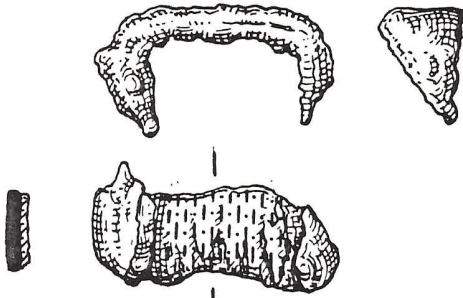
233



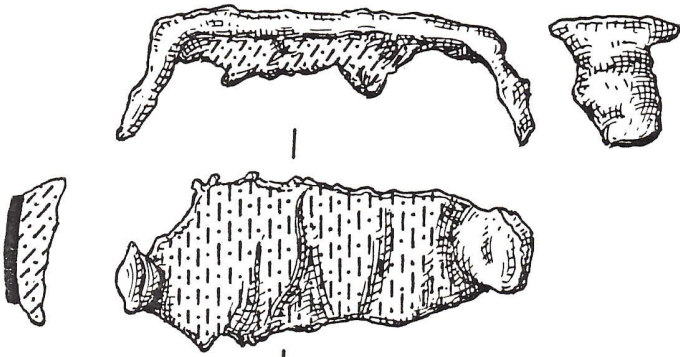
228 Top



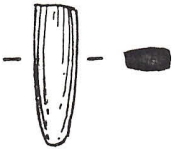
136



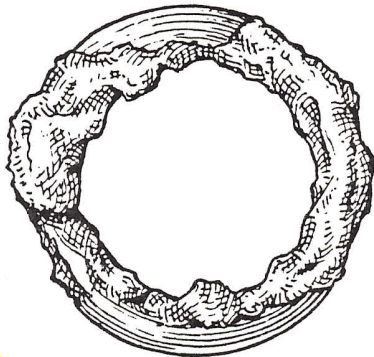
325



313 Top



231



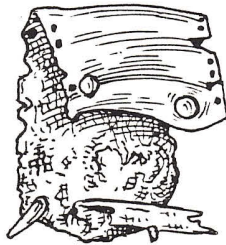
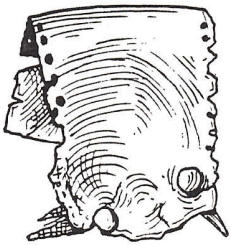
319c Top



207



206



1/7