



KDK ARCHAEOLOGY LTD

Archaeological Summary Report

Northgate Youth Centre
14 Northgate End
Bishop's Stortford
Hertfordshire



Quality Check

<i>Author</i>	Derek Watson PhD	<i>Version</i>	685/BSN/1.1	<i>Date</i>	22.04.2022
<i>Editor</i>	David Kaye BA ACIfA	<i>Version</i>	685/BSN/1.1	<i>Date</i>	14.05.2022
<i>Revision</i>		<i>Version</i>		<i>Date</i>	

© KDK Archaeology Ltd 2022 No part of this document is to be copied in any way without prior written consent.

Every effort has been made to provide as complete and as accurate a report as possible. However, KDK Archaeology Ltd cannot accept any liability in respect of, or resulting from, errors, inaccuracies, or omissions contained in this document.

© Ordnance Survey maps reproduced with the sanction of the Controller of Her Majesty's Stationery Office.
KDK Archaeology Licence No. 100053538



Unit 3 Leighton Road Leighton Buzzard Bedfordshire LU7 1LA
Tel: 01525 385443
Email: office@kdkarchaeology.co.uk
Website: www.kdkarchaeology.co.uk





CONTENTS

Summary.....	1
1. Introduction	1
2. Results.....	5
3. Conclusions	7
4. Acknowledgements.....	8

Figures:

1. General location	2
2. Site location	3
3. Proposed development.....	4

Plates:

1. After tarmac removal, looking NE	6
2. After tarmac removal, looking SW	6
3. After tarmac removal, looking SE.....	6
4. After tarmac removal, looking NW	6



Summary

In April 2022 KDK Archaeology Ltd undertook a programme of Observation and Recording at Northgate Youth Centre (NYC), 14 Northgate End, Bishop's Stortford, Hertfordshire, during the removal of a modern tarmac surface. The removal of the old tarmac surface, and minimal ground reduction, only revealed its sand and hardcore bedding layer. No natural stratigraphy or archaeological finds, features, or deposits were revealed within the footprint of the development.

1 Introduction

1.1 In April 2022 KDK Archaeology Ltd undertook a programme of Observation and Recording at Northgate Youth Centre, 14 Northgate End, Bishop's Stortford, Hertfordshire. The project was commissioned by Brett Edbrook of EI Projects, Bournemouth.

1.2 *The Site*

Location and Description

The site is situated in the town and civil parish of Bishop's Stortford, within the administrative district of East Hertfordshire District Council at National Grid Reference (NGR) TL 4874 2169 (Fig. 1).

The Northgate Youth Centre is located near the centre of Bishop's Stortford, and is bounded to the west by Northgate End (road), to the north by a private residence, and to the east and south by car parks.

Geology and Topography

The bedrock geology is sedimentary chalk of the Lewes Nodular Chalk and Seaford Chalk Formations (undifferentiated), formed approximately 84 to 94 million years ago in the Cretaceous Period, with superficial deposits of clay, silt, sand and gravel described as Head, deposited up to 3 million years ago in the Quaternary Period (<http://mapapps.bgs.ac.uk/geologyofbritain/home.html>). The development site is situated at c.64m AOD.

Proposed Development

As part of the renovation of the NYC, the development called for the removal of the existing tarmacadam surface around the building, followed by releveling and recovering the area with a new tarmacadam surface (Fig. 3).



Figure 1: General location (scale 1:25,000)



Figure 2: Site location (scale 1: 1250)

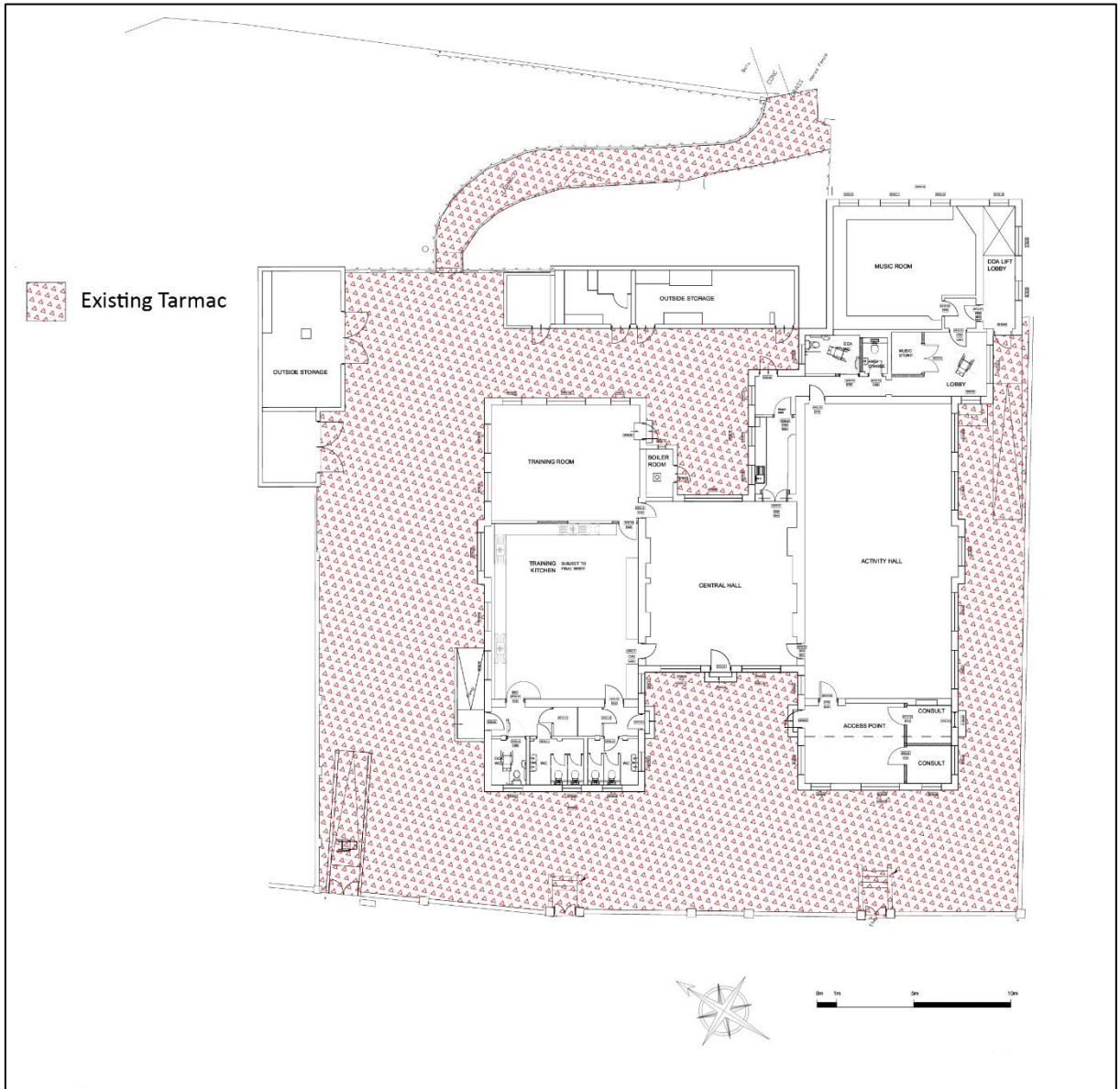


Figure 3: Development: external works (scale as shown)



2 Results

Introduction

In April 2022, KDK Archaeology undertook a programme of Observation and Recording during the removal of the tarmac surface surrounding Northgate Youth Centre. This entailed the initial monitoring of the removal of the existing tarmac surface across the footprint of the development: an area measuring c.674m² (Fig. 3; Plates 1-4).

Description

Due to the requirements of this project only minimal ground reduction was necessary, which exposed the underlying sand and hardcore sub base layer for the original tarmac surface. No natural stratigraphy or archaeological finds, features, or deposits were revealed within the footprint of the development.



Plate 1: After tarmac removal, looking NE



Plate 2: After tarmac removal, looking SW



Plate 3: After tarmac removal, looking SE



Plate 4: After tarmac removal, looking SW



3 Conclusions

The removal of the existing tarmac surface, and minimal ground reduction, only revealed its sand and hardcore bedding layer. This made-ground would have been deposited to raise and level the ground as part of the area landscaping prior to laying the original (modern) tarmac surface, and construction of the Youth Centre. Consequently, neither the natural geology, nor the archaeological horizon were reached. No archaeological features, finds or deposits were revealed during this development.

Due to the lack of archaeological material on the site, on this occasion it has not been possible to advance any of the local or regional research aims.



4 Acknowledgements

KDK Archaeology is grateful to Brett Edbrook for commissioning this report on behalf of the developer.

The fieldwork was carried out by Florian Weber MA PCIfA. The report was written by Derek Watson PhD, and edited by David Kaye BA ACIfA.