



Plate 25: Barn 1, Unit 1, east wall, looking east



Plate 26: Barn 1, Unit 1, looking northeast



Plate 27: Barn 1, Unit 1, east & south walls, looking southeast



Plate 28: Barn 1, Unit 1, north wall, looking northwest



Plate 29: Barn 1, Unit 1, southern wall, looking south



Plate 30: Barn 1, Unit 1, southern walls, looking south



Plate 31: Barn 1, Unit 1, looking southwest



Plate 32: Barn 1, Unit 1, looking northwest



Plate 33: Barn 1, Unit 1, north wall, looking northwest



Plate 34: Barn 1, Unit 1, southern door, looking south



Plate 35: Barn 1, Unit 1-Unit 2b, looking north



Plate 36: Barn 1, Unit 1, east wall, looking east



Plate 37: Barn 1, Unit 1, south wall panel detail, looking south



Plate 38: Barn 1, Unit 1, south wall panel detail, looking south



Plate 39: Barn 1, Unit 1, roofing detail, looking east



Plate 40: Barn 1, Unit 1, roofing detail, looking south



Plate 41: Barn 1, Unit1, Truss 2 detail, looking northeast



Plate 42: Barn 1, Unit1, Truss 2 detail, looking northwest



Plate 43: Barn 1, Unit2b, door to original stair to first floor, looking north

4.3 **Barn 2** (Figs 19-20; Plates 44-64)

Barn 2 is a 3-bay timber framed barn with a gabled porch to the south and brick fronted lean-tos to the east and west of it. The roofs are all covered in slate. The walling in the extensions and the pillars within the porch is of hand-made red bricks, set in lime mortar in a Flemish bond. The remaining walls are clad in corrugated metal sheeting with an opening left in the north and west walls for a single door in each.

The interior has been subdivided so that the western bay (Bay 3) now houses two rooms, a workshop and a store, above which is an upper floor that provided office space and a WC.

The barn is similar in date and style to Barn 1 in that there is tension bracing above the mid rail, jowled posts with cranked bracing supporting raked queen post trusses and butt joints in the northern wallplate. The differences are that, with the exception of the post in the northeast corner, the vertical posts have a gunstock jowl, and that the roof has staggered butt purlins and straight braces. In addition, the east gable end has cross bracing, which has been breached to the north by a later door.



The east wall has been extensively rebuilt below the wallplate, with primary bracing above and below the mid rail and a door set within the northern frame. The timberwork rests on a supporting dwarf wall built of Fletton bricks and that is c.0.5m high. There is a large window between the wallplate and the collar beam.

The north wall has also been largely rebuilt in Bay 2 and has a frame with primary bracing to the right of a panel that has a poorly constructed brick base and a weatherboarded section of close studding above a section of walling where the studs are widely spaced and the weatherboarding is lacking. This appears to have been an opening that has been rudimentarily filled in. The supporting dwarf wall to the east of this is largely rendered over, but where exposed appears to be of better quality and earlier date. A single door in Bay 1 gives access to the modern staircase leading to the office above.

The south wall appears to have the greatest number of original timbers, of which a number are waney edged. Two modern, single light windows have been installed at first floor level in the south wall.



Plate 44: Barn 2, north/west elevations, looking southeast



Plate 45: Barn 2, west/south elevations, looking northeast



Plate 46: Barn 2, south elevation, looking northeast



Plate 47: Barn 2, east/north elevations, looking southwest



Plate 48: Barn 2, south elevation, looking northeast

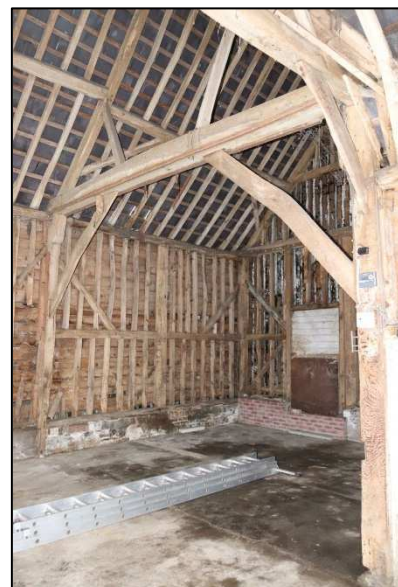


Plate 49: Barn 2, Unit 1, looking northeast



Plate 50: Barn 2, Unit 1, looking roof detail, looking north



Plate 51: Barn 2, Unit 1, east wall, looking east



Plate 52: Barn 2, Unit 1, north wall, looking northeast



Plate 53: Barn 2, Unit 1, roof detail, looking northwest



Plate 54: Barn 2, Unit 1, north wall, looking north



Plate 55: Barn 2, Unit 1, north wall, looking north



Plate 56: Barn 2, Unit 1, east wall, looking east



Plate 57: Barn 2, Unit 1, east wall detail, looking east



Plate 58: Barn 2, Unit 1, roofing detail, looking northwest



Plate 59: Barn 2, Unit 1, roof detail, looking southwest



Plate 60: Barn 2, Unit 1, south wall, looking south



Plate 61: Barn 2, Unit 1-1b, looking east



Plate 62: Barn 2, Unit 1, west wall detail, looking west



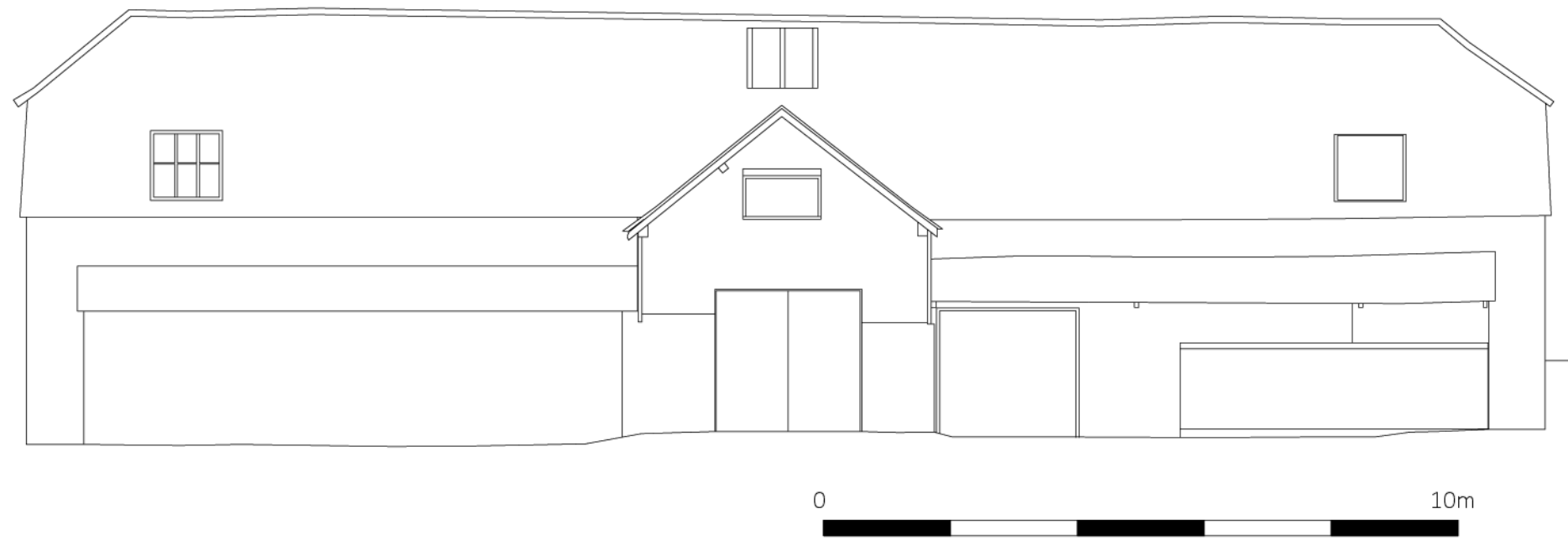
Plate 63: Barn 2, Unit 1, roof detail, looking south



Plate 64: Barn 2, Unit 2a, looking northeast



South elevation



North elevation

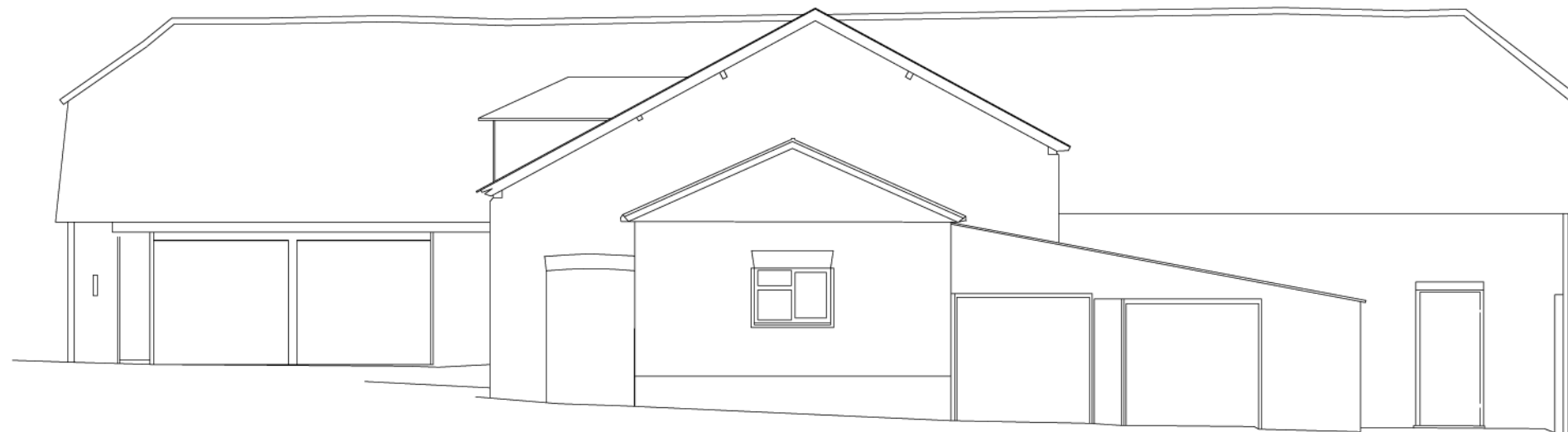


Figure 12: Barn 1, south and north elevations (scale 1:100)

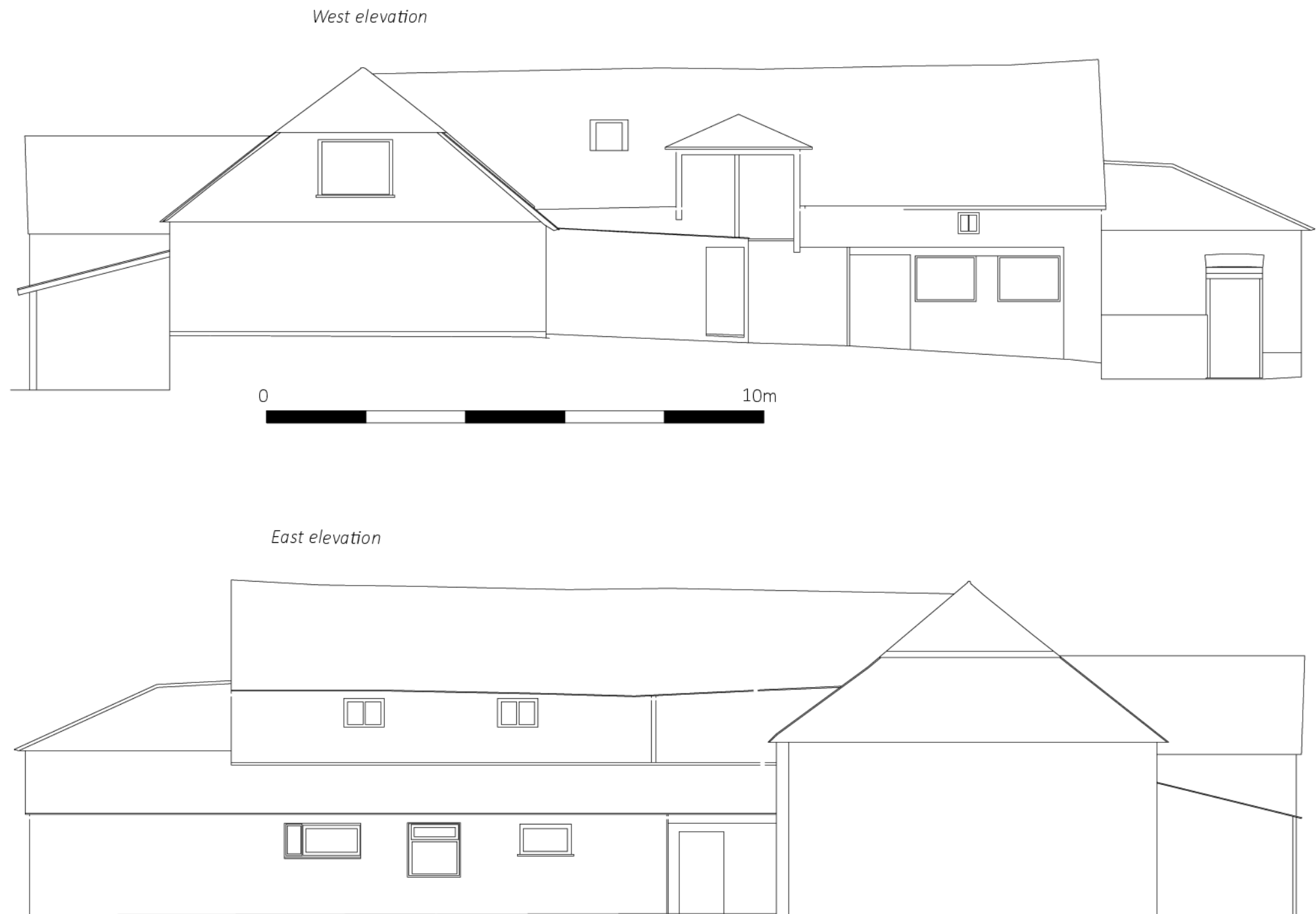
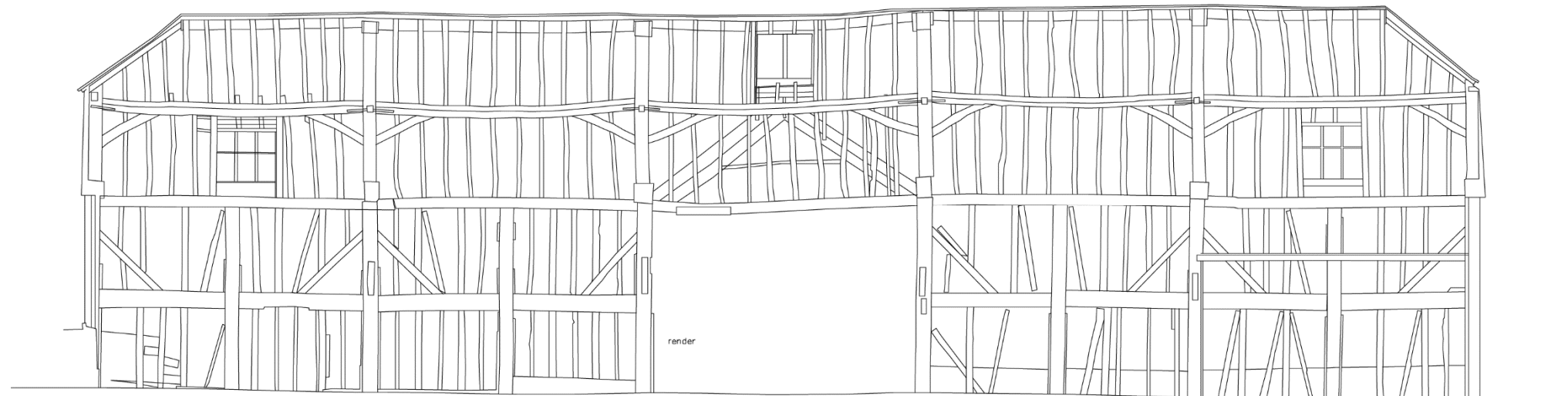


Figure 13: Barn 1, west and east elevations (scale 1:100)



South elevation



North elevation

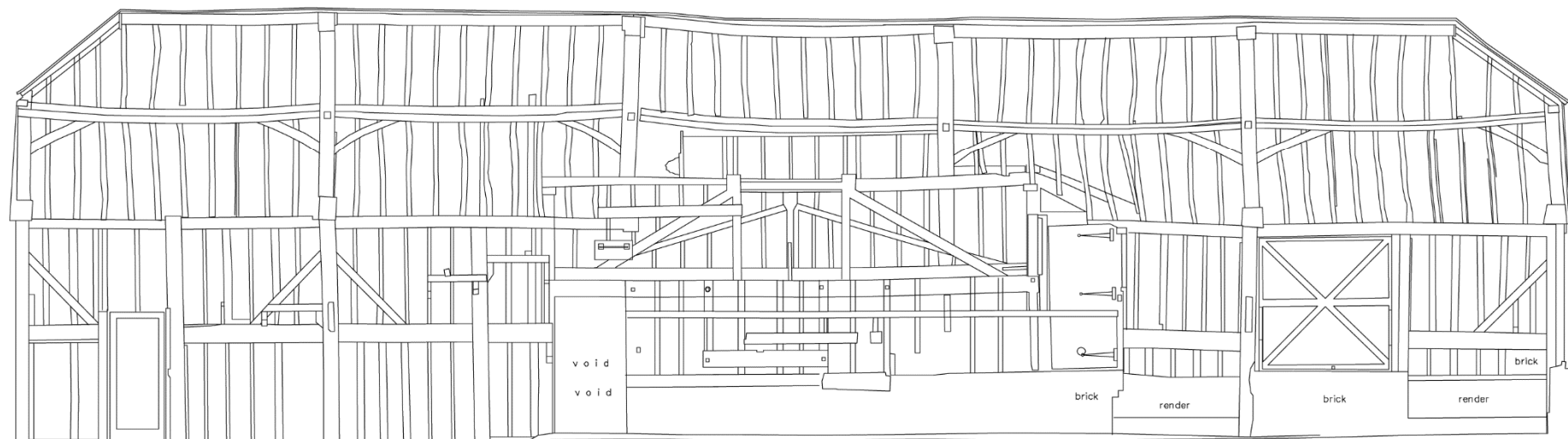
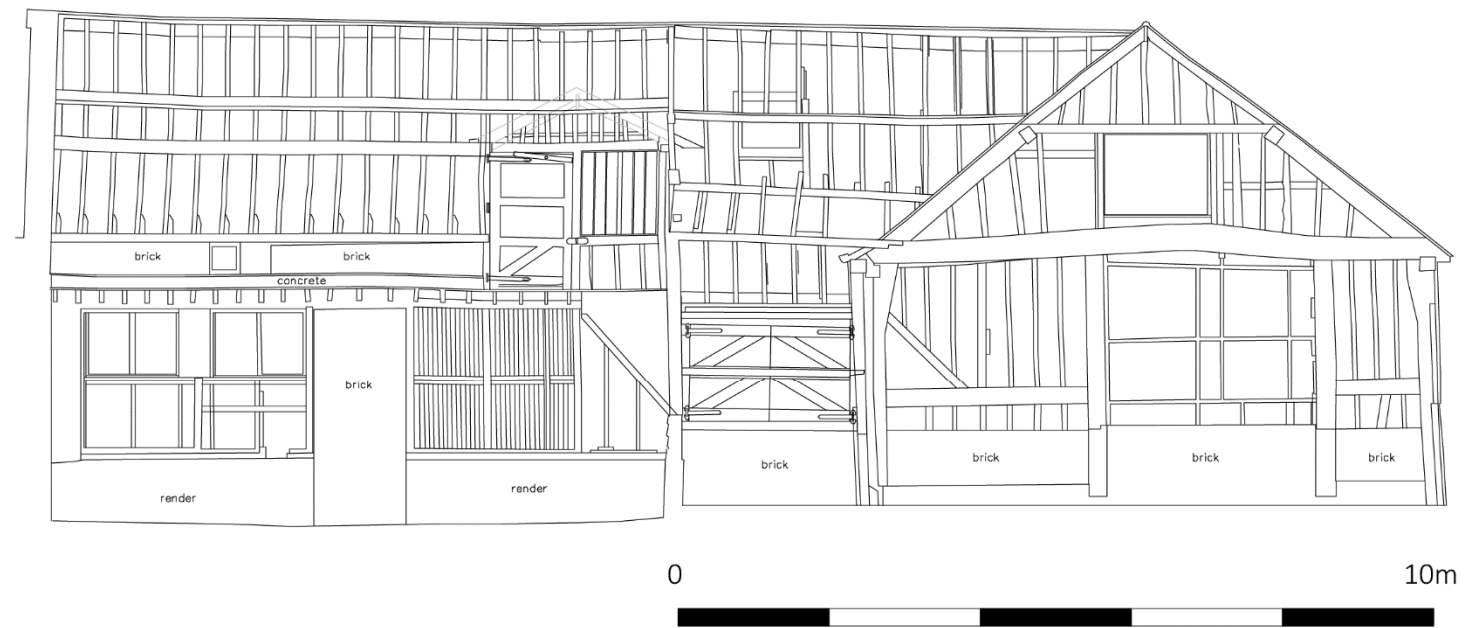


Figure 14: Barn 1, south and north internal elevations (scale 1:100)

East elevation



West elevation



Figure 15: Barn 1, east and west internal elevations (scale 1:100)

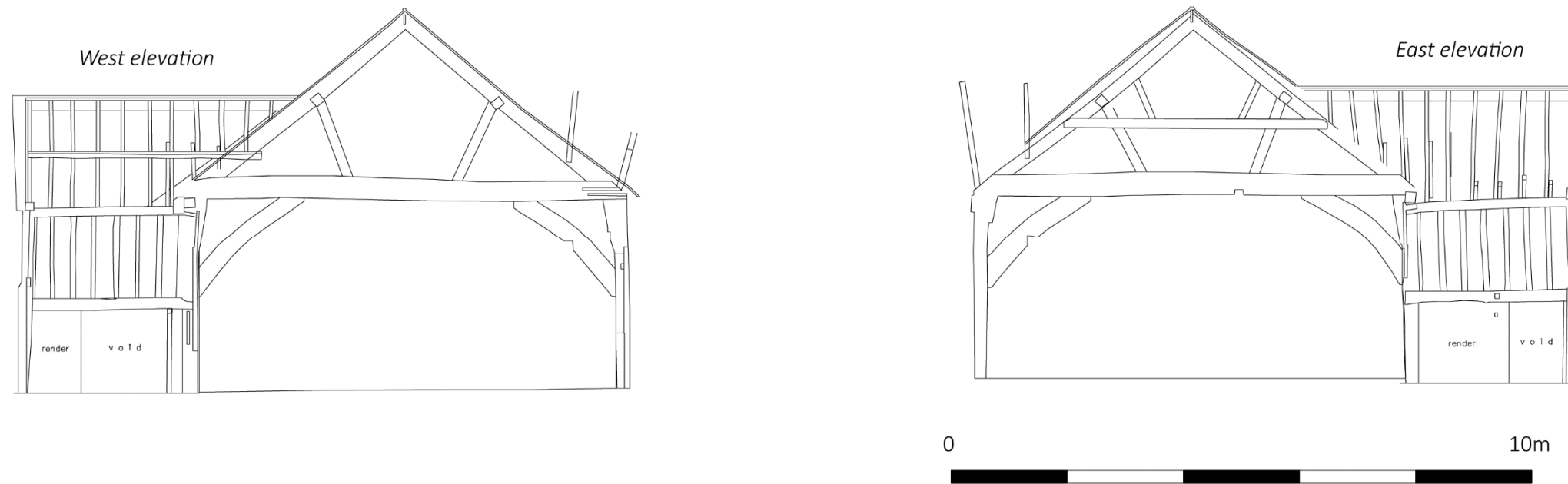


Figure 16: Barn 1, midstrey (scale 1:100)



Figure 17: Barn 1, ground floor and photo plan (scale 1:125)

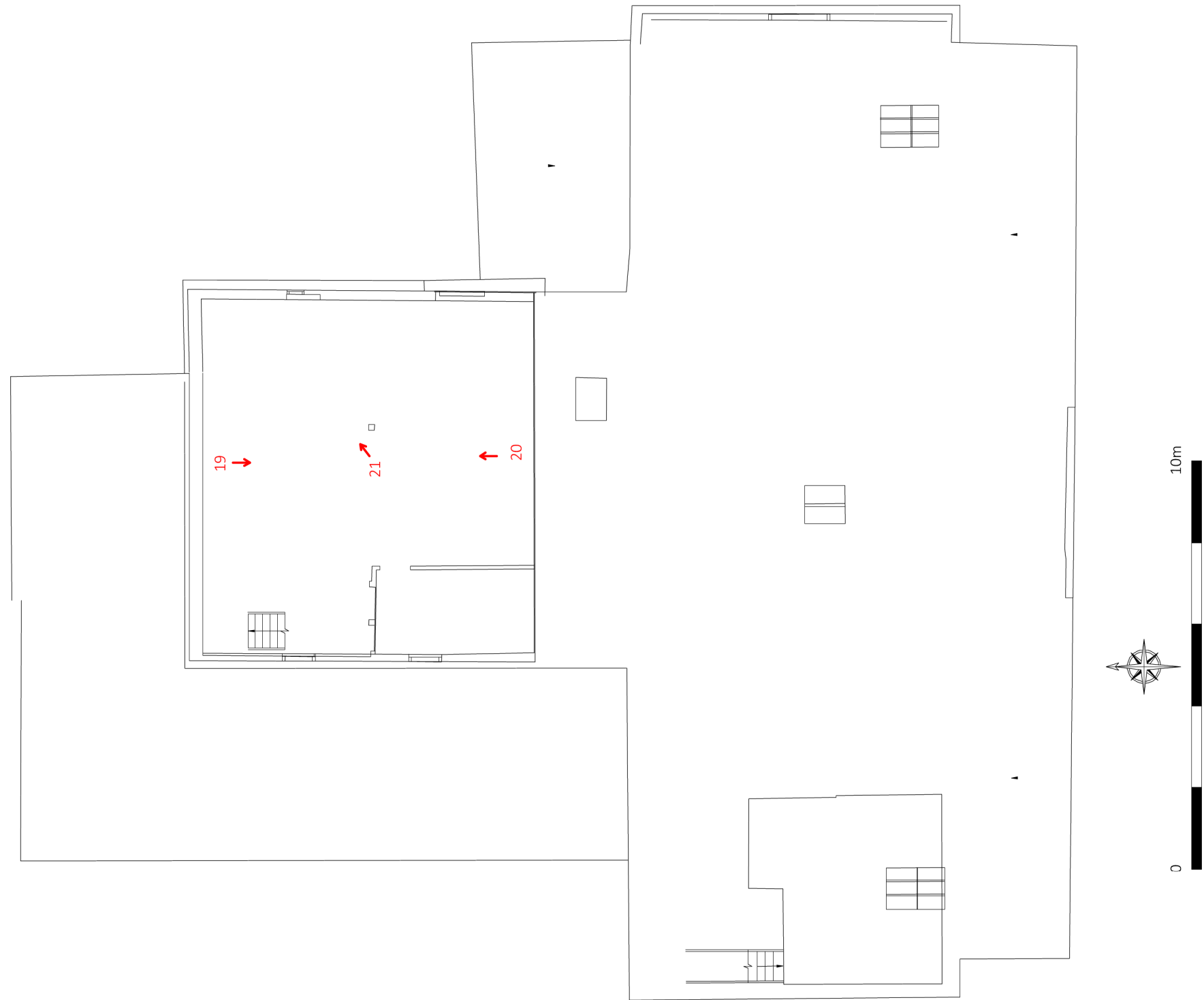


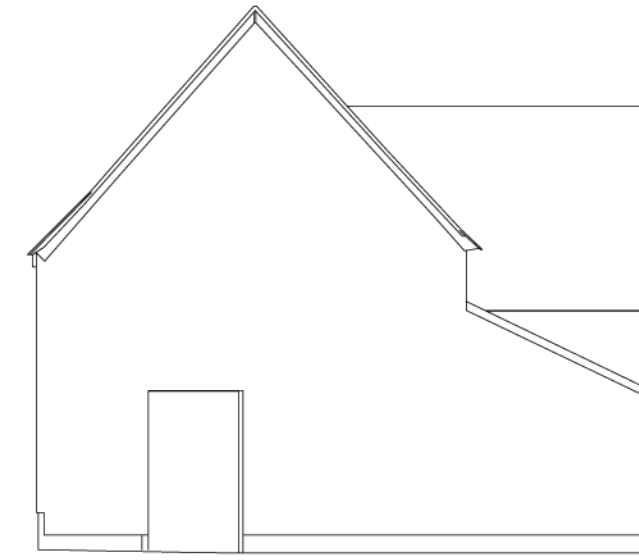
Figure 18: Barn 1, first floor and photo plan (scale 1:125)



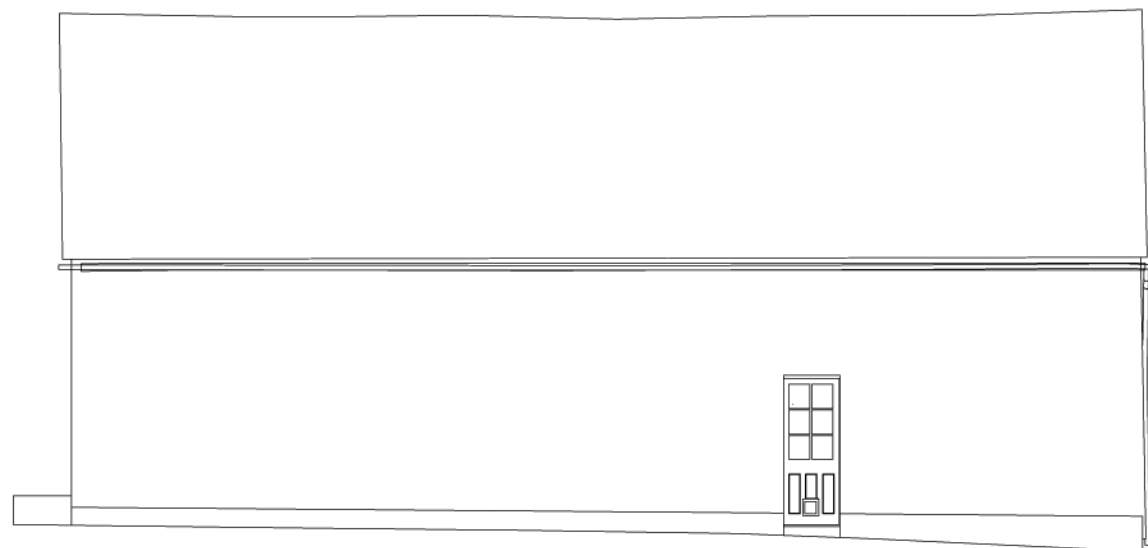
South elevation



West elevation



North elevation



East elevation

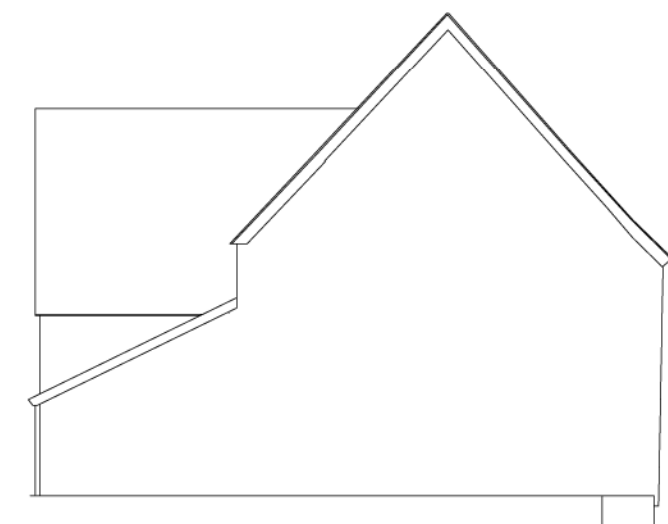


Figure 19: Barn 2 elevations (scale 1:100)

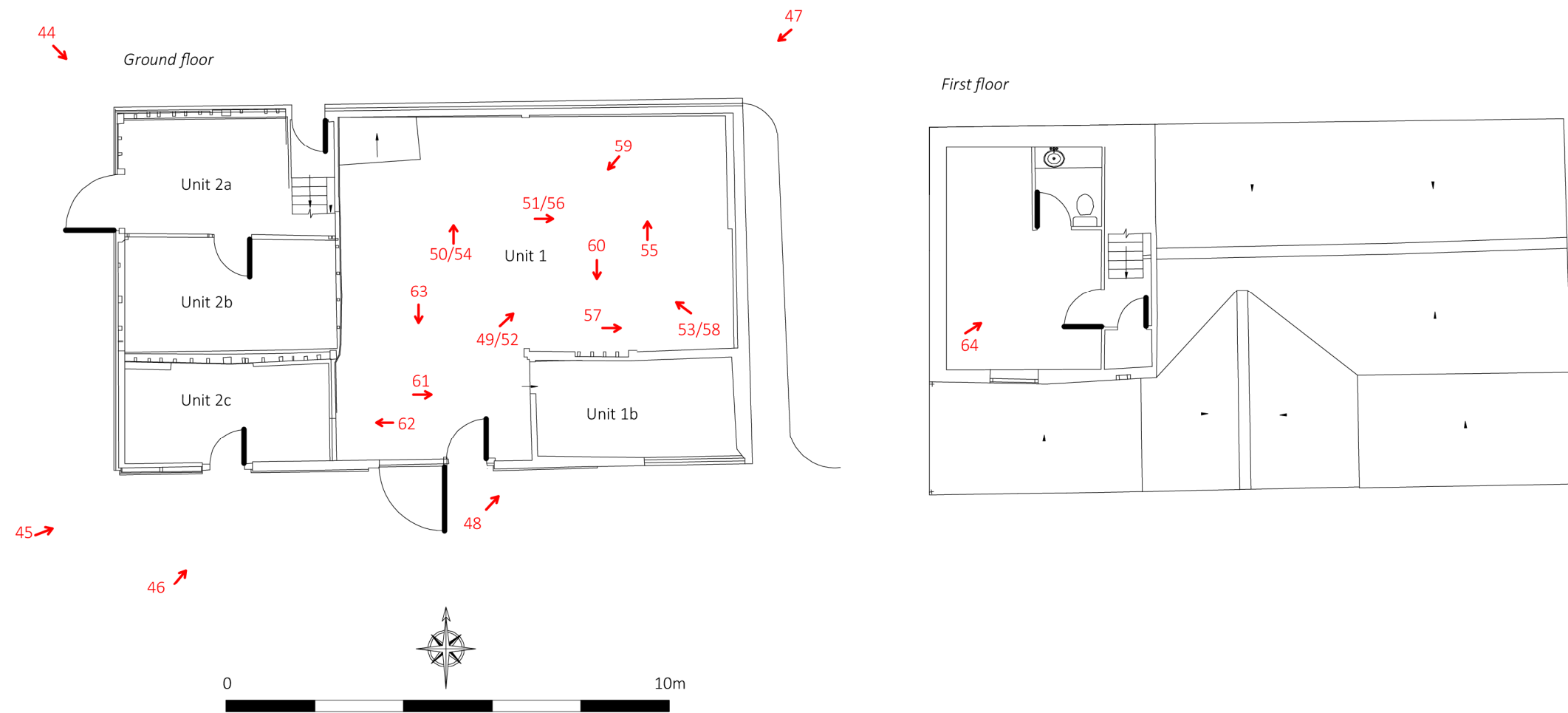


Figure 19: Barn 2 existing floor and photo plans (scale 1:125)



Figure 20: Barn 1 proposed south and north elevations (scale 1:100)

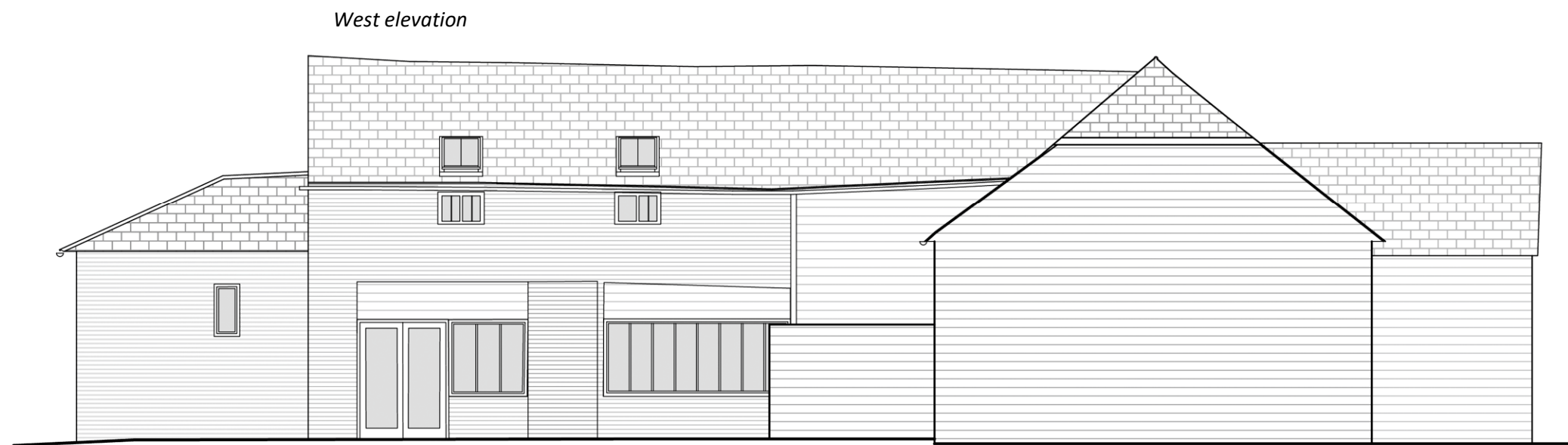


Figure 22: Barn 1 proposed east and west elevations (scale 1:100)

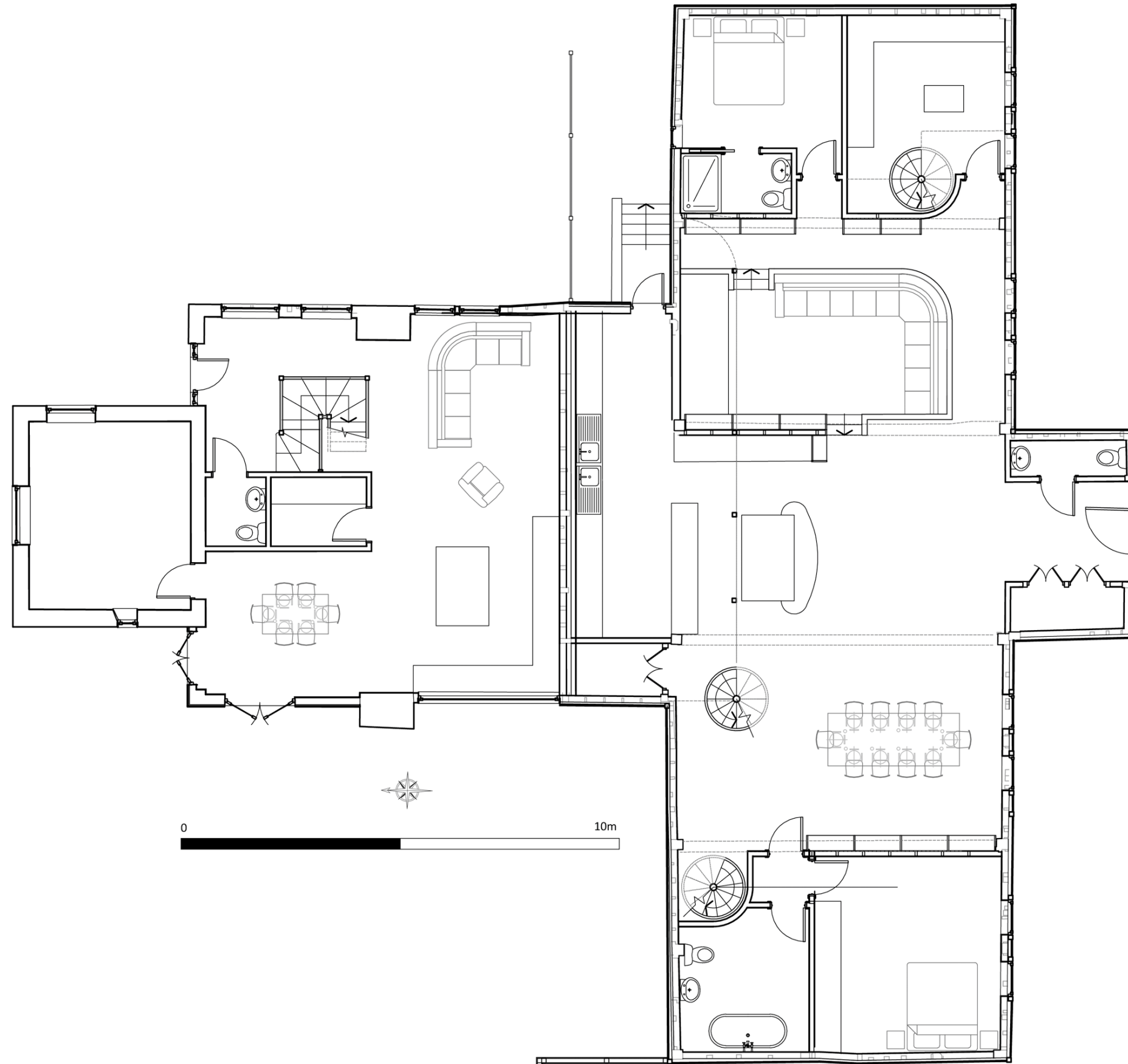


Figure 23: Barn 1 proposed ground floor (scale as shown)

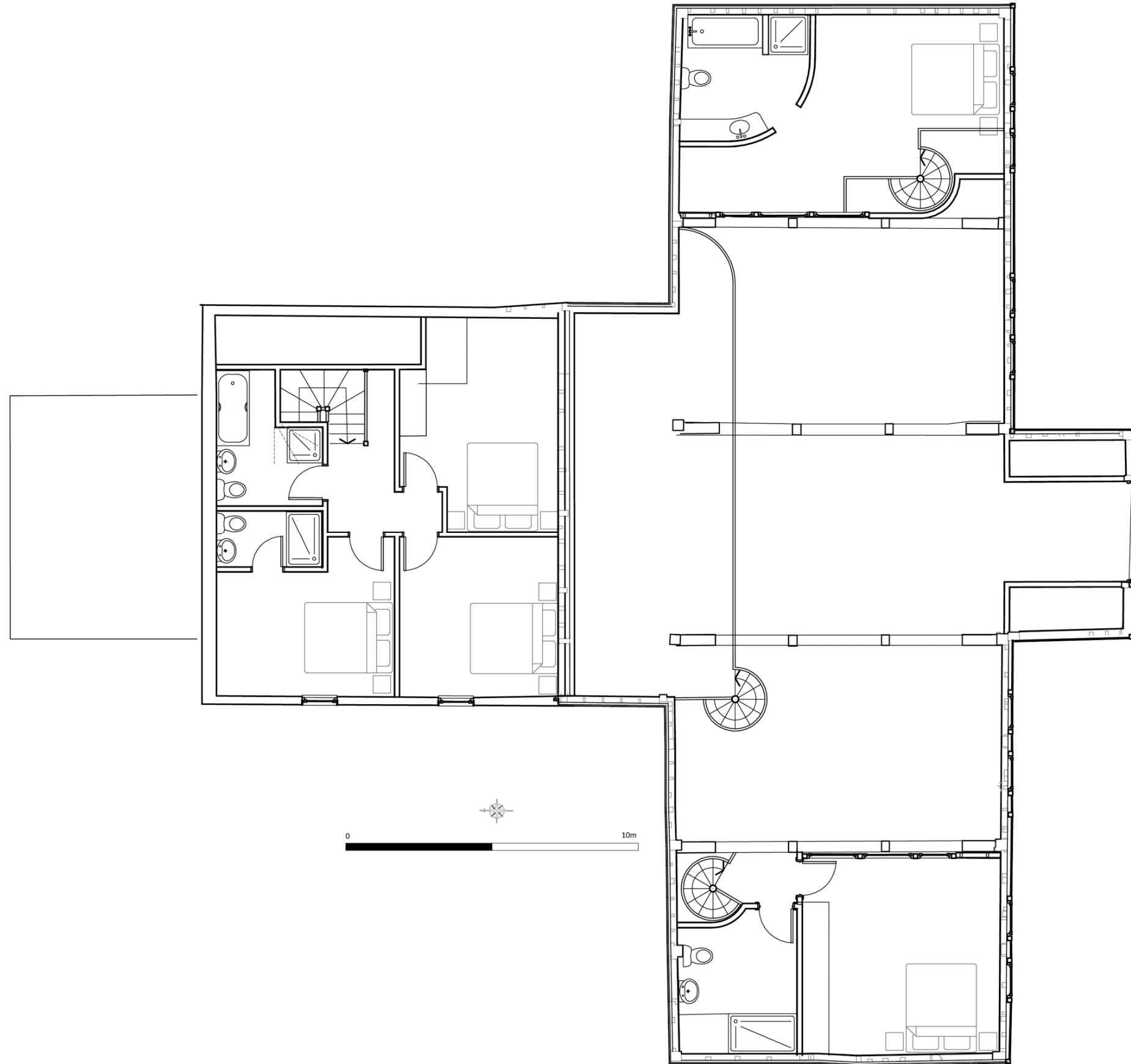


Figure 24: Barn 1 proposed first floor (scale as shown)



East elevation



North elevation



South elevation



West elevation

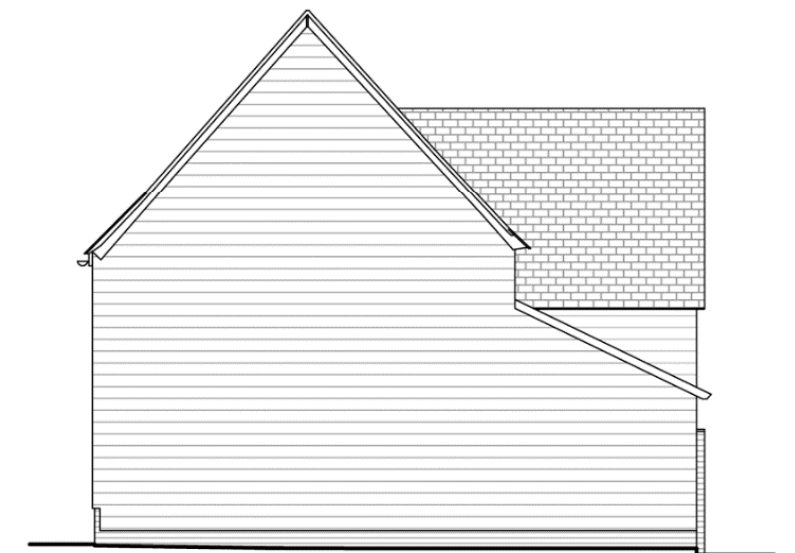


Figure 25: Barn 2 proposed elevations (scale 1:100)



Figure 26: Barn 2 proposed floor plans (scale 1:100)

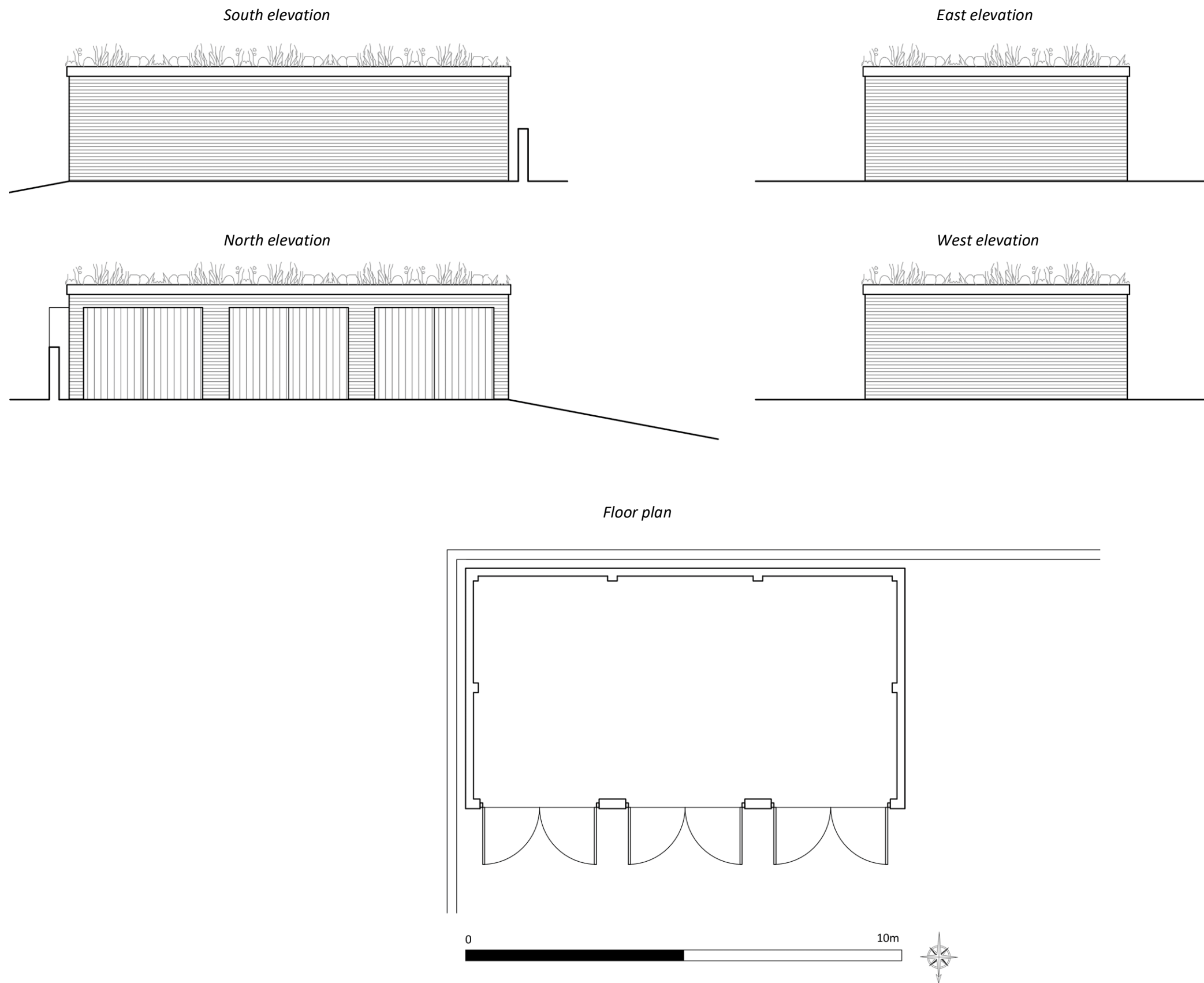


Figure 27: Proposed new garage to Barn 1 (scale 1:100)