



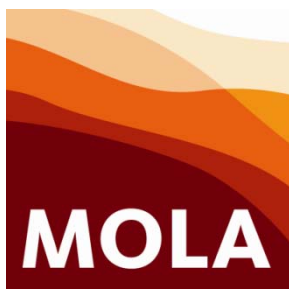
Trial Trench Evaluation on land off Glebe Close Stockton, Warwickshire February 2014

Accession No: T1294

Report No. 14/38

Author: Chris Chinnock

Illustrator: Amir Bassir



Trial Trench Evaluation Land off Glebe Close Stockton, Warwickshire February 2014

Accession No: T1294

Report No. 14/38

Quality control and sign off:

Issue No.	Date approved:	Checked by:	Verified by:	Approved by:	Reason for Issue:
1	[13.02.14]	Pat Chapman	Adam Yates	Andy Chapman	Draft for client review

Author: Chris Chinnock

Illustrator: Amir Bassir

© MOLA (Museum of London Archaeology) 2014

MOLA
Bolton House
Wootton Hall Park
Northampton
NN4 8BN
01604 700 493
www.mola.org.uk
business@mola.org.uk

STAFF

Project Manager:	Adam Yates BA MIfA
Text:	Chris Chinnock BA, MSc, PIfA
Fieldwork:	Chris Chinnock Oliver Dindol BSc
Finds:	Tora Hylton
Illustrations:	Amir Bassir BSc

OASIS REPORT FORM

PROJECT DETAILS		OASIS No: molarnort1 - 171529
Project name	Archaeological trial trench evaluation on land off Glebe Close, Stockton Warwickshire	
Short description (250 words maximum)	MOLA was commissioned by Morton Wykes Kramer LLP to carry out archaeological trial trenching on land off Glebe Close, Stockton, Warwickshire prior to proposed development of the site. Six trenches were excavated. Several remnant furrows of medieval ridge and furrow cultivation were recorded aligned north-east to south-west. Pottery dating to the 16th-18th centuries was recovered from the furrows. No other features of archaeological interest were present.	
Project type (eg DBA, evaluation etc)	Evaluation	
Site status (none, NT, SAM etc)	None	
Previous work (SMR numbers etc)	None	
Current Land use	Pasture	
Future work (yes, no, unknown)	Unknown	
Monument type/ period	Post-medieval agricultural practices	
Significant finds (artefact type and period)	None	
PROJECT LOCATION		
County	Warwickshire	
Site address (including postcode)	Land off Glebe Close, Stockton Warwickshire	
Study area (sq.m or ha)	0.5ha	
OS Easting & Northing (use grid sq. letter code)	SP 4360 6340	
Height OD	Approx. 95m aOD	
PROJECT CREATORS		
Organisation	MOLA	
Project brief originator	Warwickshire Museum Field Services	
Project Design originator	MOLA	
Director/Supervisor	Chris Chinnock	
Project Manager	Adam Yates	
Sponsor or funding body	Morton Wykes Kramer LLP	
PROJECT DATE		
Start date	10/02/2014	
End date	10/02/2014	
ARCHIVES	Location (Accession no.)	Content (eg pottery, animal bone etc)
Physical	Warwickshire Museum T1294	Pottery
Paper	Warwickshire Museum T1294	Site file
Digital	Warwickshire Museum T1294	Mapinfo plans, Word report
BIBLIOGRAPHY		
Journal/monograph, published or forthcoming, or unpublished client report (MOLA report)		
Title	Archaeological trial trench evaluation on land off Glebe Close, Stockton, Warwickshire	
Serial title & volume	14/38	
Author(s)	Chris Chinnock	
Page numbers		
Date		

Contents

- 1 INTRODUCTION**
- 2 AIMS AND OBJECTIVES**
- 3 BACKGROUND**
 - 3.1 Topography and geology**
 - 3.2 Archaeological background**
- 4 EXCAVATION METHODOLOGY**
- 5 THE EXCAVATED EVIDENCE**
- 6 POTTERY** by Tora Hylton
- 7 DISCUSSION**

BIBLIOGRAPHY

Figures

Front cover: Trench 1, looking north-east

Back cover: General view of site, looking south-east

Fig 1: Site location

Fig 2: The excavated trenches

Fig 3: Trench 1 representative section, looking north-west

Fig 4: Furrow [305], looking south-west

APPENDIX: CONTEXT INVENTORY

**ARCHAEOLOGICAL TRIAL TRENCH EVALUATION,
ON LAND OFF GLEBE CLOSE, STOCKTON, WARWICKSHIRE
FEBRUARY 2014**

Abstract

MOLA was commissioned by Morton Wykes Kramer LLP to carry out archaeological trial trenching on land off Glebe Close, Stockton, Warwickshire prior to proposed development of the site. Six trenches were excavated. Several remnant furrows of medieval ridge and furrow cultivation were recorded aligned north-east to south-west. Pottery dating to the 16th-18th centuries was recovered from the furrows. No other features of archaeological interest were present.

1 INTRODUCTION

MOLA was commissioned by Morton Wykes Kramer LLP to conduct an archaeological evaluation on land off Glebe Close, Stockton Warwickshire (NGR SP 4360 6340 Fig 1). The fieldwork was carried out on the 10th and 11th of February 2014.

The development area lies on the edge of the historic medieval settlement of Stockton. As a result a programme of archaeological evaluation was agreed. The requirements were outlined in the Written Scheme of Investigation prepared by MOLA (2014).

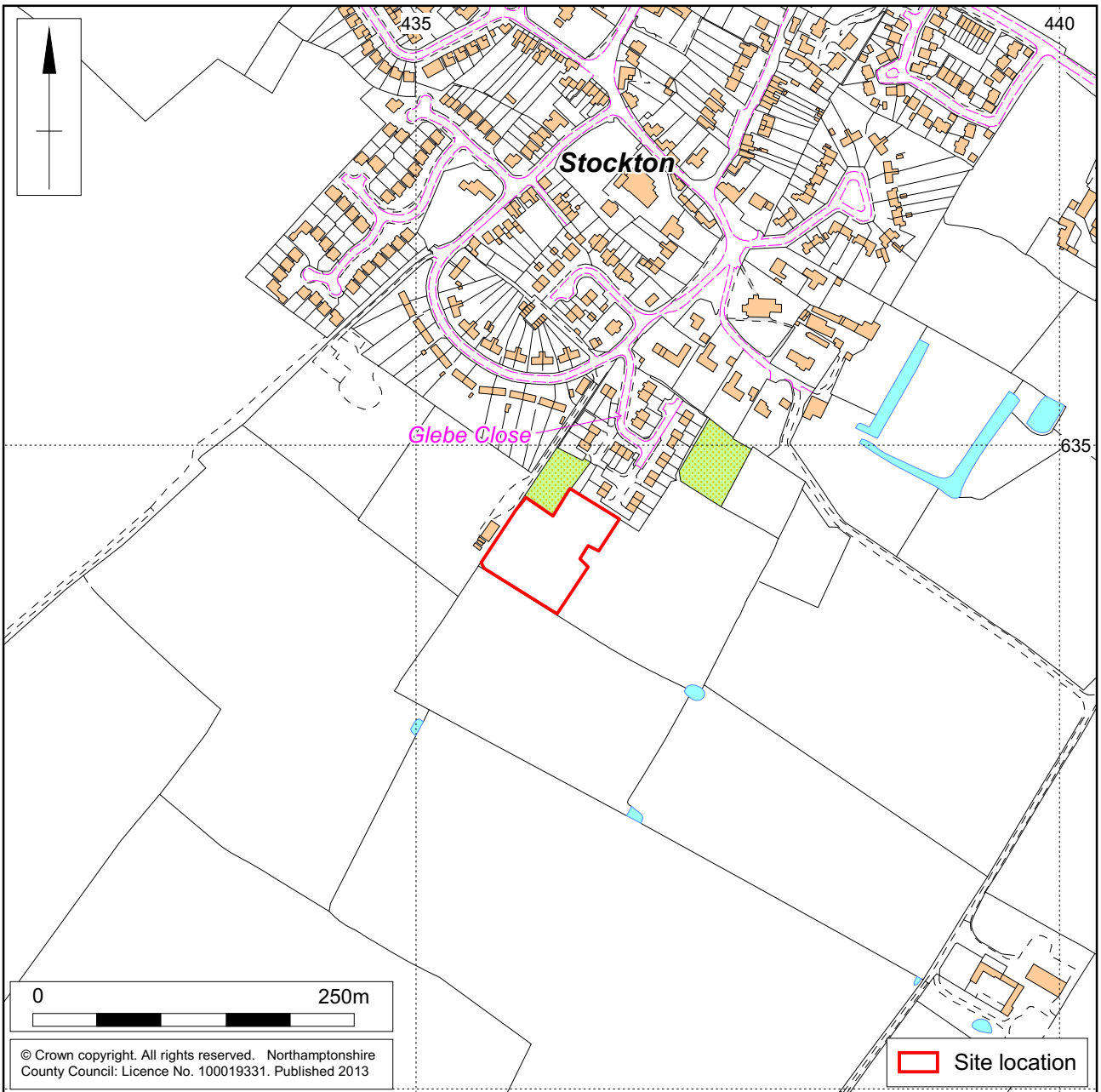
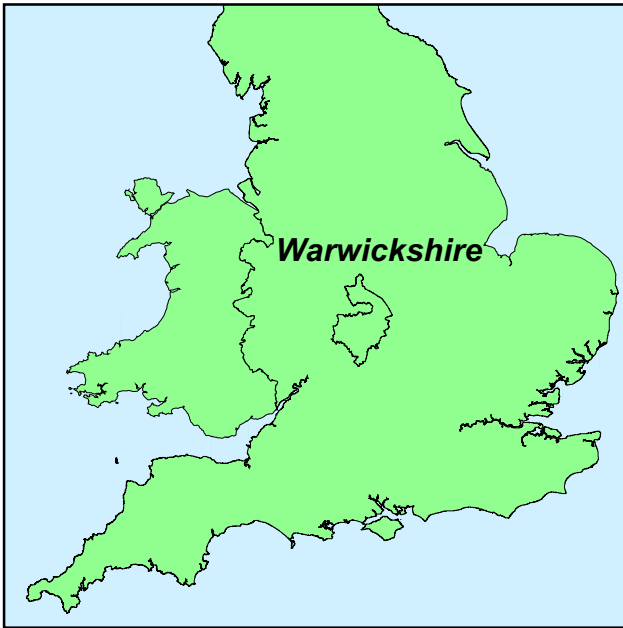
2 AIMS AND OBJECTIVES

The evaluation of the site was designed to provide information that will allow for the effective targeting of further investigation of the site, if required, prior to or during the early phases of its development.

The following information was required to allow the development of a strategy for further investigation of the site:

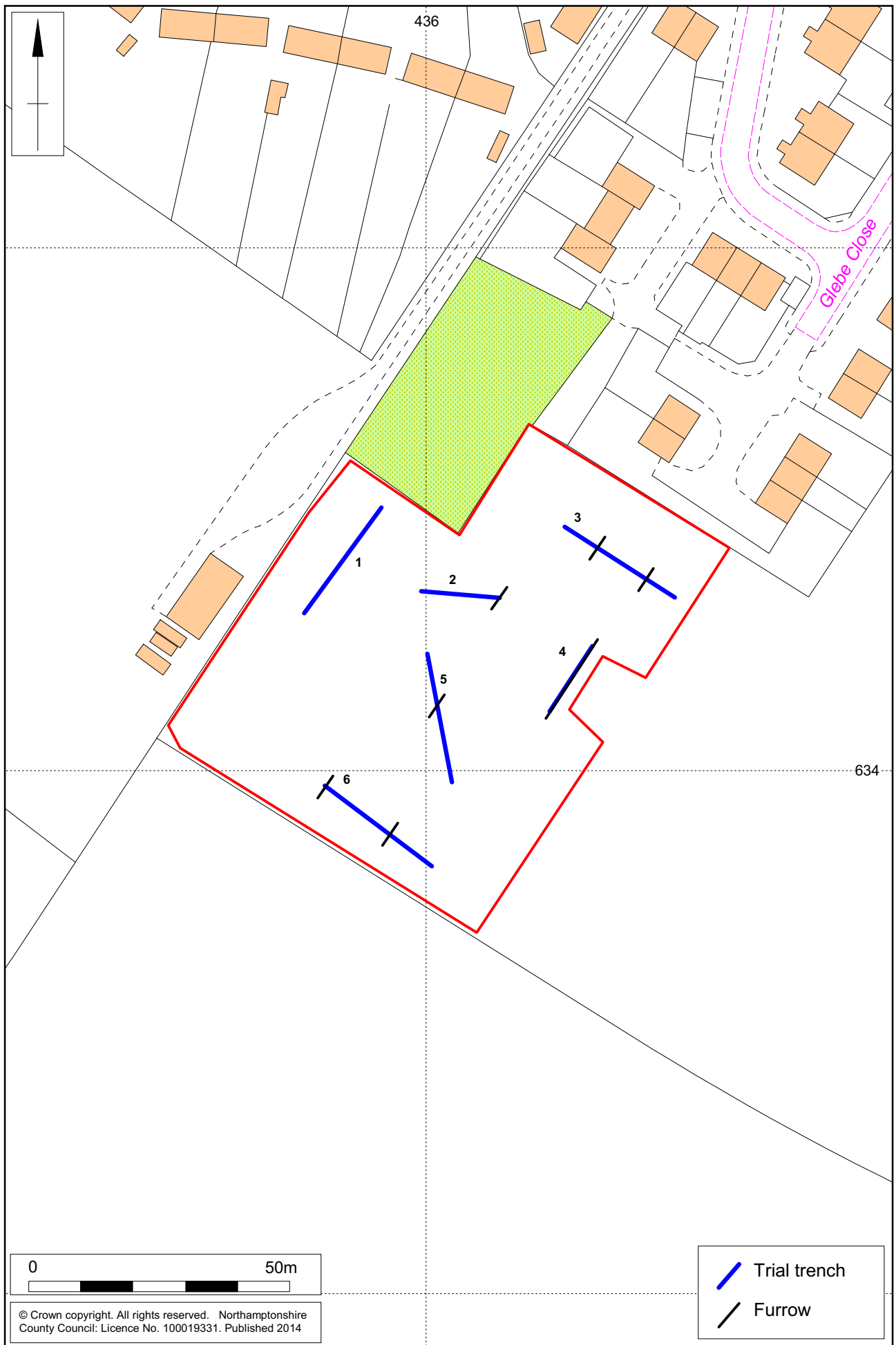
- The location, extent, nature, and date of any archaeological features or deposits that may be present;
- The integrity and state of preservation of any archaeological features or deposits that may be present.

The evaluation was carried out in accordance with the IfA's *standards and guidance for archaeological field evaluation* (IfA 2008), the Northamptonshire Archaeology Fieldwork Manual (NA 2011) and the West Midlands regional framework (Watt 2011).



Scale 1:5000

Site location Fig 1



Scale 1:1000

The excavated trenches Fig 2

3 Background

3.1 Topography and geology

The site comprises c 0.5ha of land in the north-west half of a larger field, located on the southern edge of Stockton, to the south-west of houses on Glebe Close. To the south and east the field is bounded by arable fields, and to the west there is a playing field. The site area lies on land that slopes gently down to the south-east, just below the 95m aOD contour.

The underlying bedrock geology has been mapped by the British Geological Survey as Rugby limestone - mudstone and limestone (www.bgs.ac.uk).

3.2 Archaeological background

The proposed development site lies on the south edge of the historic medieval settlement of Stockton (MWA9063). The Warwickshire County Historic Environment Record (WHER) shows the presence of prehistoric, Roman and medieval remains in and around the village.

Prehistoric activity in the vicinity is limited to cropmarks (MWA7253) which indicate the survival of a banjo enclosure immediately east of the site. Features of Romano-British date were identified during an evaluation on School Street (EWA9318) 250m north of the site and a Roman coin hoard (MWA940) was found on farmland between Stockton and Southam to the south-west. Medieval remains have also been identified at School Street (MWA13132, EWA9318) and at the manor house approximately 100m north of the site, where earthworks denote the location of the moat (MWA941). Remnant furrows lie on the land adjacent to Church Street (MWA7248), to the north.

Geophysical survey undertaken by Northamptonshire Archaeology (Ladocha 2013) did not detect any significant archaeological anomalies, nor was there any evidence for ridge and furrow cultivation that was thought to be in the area. There were a number of magnetic anomalies caused by possible ferrous objects, and general disturbance around the access between fields; these types of anomalies are common on agricultural land.

4 EXCAVATION METHODOLOGY

Six trenches, four 25m long and two 15m long were excavated using a JCB mechanical excavator fitted with a 1.6m-wide toothless ditching bucket (Fig 2). The topsoil and subsoil were removed under archaeological direction to reveal natural substrate. The topsoil and subsoil were stacked separately at the side of the excavated area. All procedures complied with MOLA Health and Safety policy and MOLA Health and Safety Operational Procedures (MOLA 2013).

The trenches were cleaned sufficiently to define any features. The excavated area and spoil heaps were scanned with a metal detector to ensure maximum finds retrieval.

All archaeological deposits encountered during the course of the evaluation were fully recorded, following standard Northamptonshire Archaeology procedures (NA 2011). All deposits were given a separate context number. They were described on *pro-forma* context sheets to include details of the context, its relationships and interpretation. Unstratified animal bones and modern material were not retained.

The location of the trenches were surveyed and related to the Ordnance Survey National Grid. A full photographic record comprising both 35mm black and white negatives and digital images was maintained. The field data from the evaluation has been compiled into a site archive with appropriate cross-referencing.

The evaluation conformed to the Institute for Archaeologists *Standard and guidance for archaeological field evaluation* (revised Oct 2008). All stages of the project were undertaken in accordance with English Heritage, *Management of Research Projects in the Historic Environment* (MoRPHE) (EH 2006). The evaluation was carried out in accordance with the Written Scheme of Investigation (WSI) prepared by MOLA (2014).

5 THE EXCAVATED EVIDENCE

The natural, in all trenches, comprised light brown-yellow clay with occasional patches of rounded stone and occurs between 0.31-0.38m below the present ground surface. The subsoil was between 0.09-0.21m thick and was firm mid-grey-brown silty clay with occasional small rounded stones and root disturbance throughout. The topsoil was between 0.11-0.26m thick and comprised dark brown-grey silty clay with root disturbance and infrequent small rounded stones throughout.



Trench 1, representative section, looking north-west Fig 3

Furrows aligned north-east to south-west were recorded in all trenches except Trench 1 (Fig 2). The furrows were approximately 3.7-4.5m wide and 7m apart. A small slot was excavated into one of the furrows in Trench 3 (Fig 4). The furrow [305] was 0.18m deep, had shallow sloping edges and a flat base. The fill (304) comprised dark brown-grey firm silty clay with occasional charcoal and rare sub-rounded stone inclusions throughout.

No other features of archaeological interest were present.



Furrow [305], looking south-west Fig 4

6 POTTERY by Torah Hylton

Six sherds of iron glazed red earthenware were recovered from furrow deposits in Trenches 3 and 5. A base sherd from a hollow ware vessel, possibly a tankard, was recovered from furrow [305]. The fabric is brick red with few inclusions and the interior and exterior surfaces are covered in a thick slip and glossy black glaze, it displays similarities to Type MB1, which dates to c1540-1700 (Warwickshire CTS, Soden and Ratkai 1998). Five undiagnostic body sherds with a pink-cream fabric and a thin iron slip and opaque glaze presumably represent a pancheon type vessel dating to the c17th-18th centuries.

7 DISCUSSION

Whilst not immediately apparent in the geophysical data, it is clear that furrows relating to medieval ridge and furrow cultivation are present across the site (Fig 2). This evidence accords well with relict ridge and furrow earthworks in some of the surrounding fields. Pottery recovered from the fill of the furrows dates from the 16th to 18th centuries. No other features of archaeological interest were present in any of the excavated trenches.

BIBLIOGRAPHY

EH 2006 *Management of Research Projects in the Historic Environment: The MoRPHE Project Managers Guide*, English Heritage

IfA 2008 *Standard and guidance for archaeological field evaluation*, Institute for Archaeologists

Ladocha, J, 2013 *Archaeological geophysical survey of land off Glebe Close, Stockton, Warwickshire*, Northamptonshire Archaeology Report **13/247**

MOLA 2013 *Health and Safety Policy Operational Procedures*, MOLA

MOLA 2014 *Archaeological Trial Trench Evaluation, Glebe Close, Stockton, Warwickshire: Written Scheme of Investigation*, MOLA

NA 2011 *Archaeological Fieldwork Manual*, Northamptonshire Archaeology

Soden, I, and Ratkai, S, 1998 *Warwickshire Medieval and post-medieval pottery Type series*, Warwickshire Museum

Watt, S, 2011 *The Archaeology of the West Midlands: A Framework for Research*, Oxbow Books

WEBSITES

www.bgs.ac.uk/geoindex/home.html

MOLA
14th February 2014

APPENDIX: CONTEXT INVENTORY

Trench No.	Length, width & alignment		Surface height, south-west end (aOD)	Depth & height of natural (aOD)
1	25mx2m SW-NE		93.92m	0.38m 93.54m
Context	Context type	Description	Dimensions	Artefacts/Samples
101	Topsoil	Mid-dark brown-grey firm silty clay infrequent sub-rounded stones and roots	0.23m	
102	Subsoil	Med grey-brown firm silty clay infrequent small sub rounded stones	0.15m	
103	Natural	Mid-light brown-yellow compact silty clay infrequent med-small stones	-	

Trench No.	Length, width & alignment		Surface height, west end (aOD)	Depth & height of natural (aOD)
2	15mx2m SW-NE		93.61m	0.35m 93.26m
Context	Context type	Description	Dimensions	Artefacts/Samples
201	Topsoil	Mid-dark brown-grey firm silty clay infrequent sub-rounded stones and roots	0.26m	
202	Subsoil	Med grey-brown firm silty clay infrequent small sub rounded stones	0.09m	
203	Natural	Mid-light brown-yellow compact silty clay infrequent med-small stones Plough scars to south	-	

Trench No.	Length, width & alignment		Surface height, north-west end (aOD)	Depth & height of natural (aOD)
3	25mx2m SE-NW		93.62m	0.32m 93.30m
Context	Context type	Description	Dimensions	Artefacts/Samples
301	Topsoil	Mid-dark brown-grey firm silty clay infrequent sub-rounded stones and roots	0.12m	
302	Subsoil	Med grey-brown firm silty clay infrequent small sub rounded stones	0.20m	
303	Natural	Mid-light brown-yellow compact silty clay infrequent med-small stones	-	
304	Fill	Dark brown-grey firm silty clay <10% sub-rounded stones	0.18m	1 sherd of post-medieval pottery
305	Cut	Gentle sloping edges with flat base	0.18m	

Trench No.	Length, width & alignment		Surface height, north-east end (aOD)	Depth & height of natural (aOD)
4	15mx2m SW-NE		93.06m	0.32m 92.74m
Context	Context type	Description	Dimensions	Artefacts/Samples
401	Topsoil	Mid-dark brown-grey firm silty clay infrequent sub-rounded stones and roots	0.11m	
402	Subsoil	Med grey-brown firm silty clay infrequent small sub rounded stones	0.21m	
403	Natural	Mid-light brown-yellow compact silty clay infrequent medium-small stones	-	

Trench No.	Length, width & alignment		Surface height, north-west end (aOD)	Depth & height of natural (aOD)
5	25mx2m SE-NW		93.42m	0.31m 93.11m
Context	Context type	Description	Dimensions	Artefacts/Samples
501	Topsoil	Mid-dark brown-grey firm silty clay, infrequent sub-rounded stones and roots	0.13m	
502	Subsoil	Med grey-brown firm silty clay infrequent small sub rounded stones	0.18m	Post-medieval pottery from surface of furrows
503	Natural	Mid-light brown-yellow compact silty clay infrequent medium-small stones	-	

Trench No.	Length, width & alignment		Surface height, north-west end (aOD)	Depth & height of natural (aOD)
6	25mx2m SE-NW		93.38m	0.32m 93.06m
Context	Context type	Description	Dimensions	Artefacts/Samples
601	Topsoil	Mid-dark brown-grey firm silty clay infrequent sub-rounded stones and roots	0.14m	
602	Subsoil	Med grey-brown firm silty clay infrequent small sub rounded stones	0.18m	
603	Natural	Mid-light brown-yellow compact silty clay infrequent medium-small stones	-	

