



**Historic Building Recording at Stanford Hall Estate  
Stanford on Soar, Nottinghamshire  
August - November 2014**

**Volume 2**

Report No. 14/211

Authors: Tim Upson-Smith  
Amir Bassir

Illustrator: Amir Bassir



© MOLA Northampton 2014  
Project Manager: Amir Bassir  
Planning ref: 12/02070/HYBRID, 12/0207/LBC  
NGR: SK 55871 23895

MOLA Northampton  
Bolton House  
Wootton Hall Park  
Northampton  
NN4 8BN  
[www.mola.org.uk](http://www.mola.org.uk)  
[sparry@mola.org.uk](mailto:sparry@mola.org.uk)

**HISTORIC BUILDING RECORDING AT  
STANFORD HALL ESTATE  
STANFORD ON SOAR  
NOTTINGHAMSHIRE  
AUGUST - NOVEMBER  
Volume 2**

Report No. 14/211

Quality control and sign off:

<b>Issue No.</b>	<b>Date approved:</b>	<b>Checked by:</b>	<b>Verified by:</b>	<b>Approved by:</b>	<b>Reason for Issue:</b>
1	29.10.14	Andy Chapman	Pat Chapman	Steve Parry	Draft for Client Review
2	23.01.15			ARUP	Final Report

Authors: Tim Upson-Smith  
Amir Bassir  
Illustrator: Amir Bassir

© MOLA Northampton 2014

MOLA Northampton  
Bolton House  
Wootton Hall Park  
Northampton  
NN4 8BN  
01604 700 493  
[www.mola.org.uk](http://www.mola.org.uk)  
[business@mola.org.uk](mailto:business@mola.org.uk)

---

## Figures

Fig 1: Site Location

Fig 2: The surveyed areas

Fig 4.1: Plan of the Hall, showing exterior photograph locations

Fig 4.1.1 - 33: Exterior plates

Fig 4.2.1 - 21: Cellar Plates

Fig 4.3: Stanford Hall, ground floor plan, showing photograph locations

Fig 4.3.1 - 44: Ground floor plates

Fig 4.4.1 - 39: Theatre Wing plates

Fig 4.5: Stanford Hall, first floor plan, showing photograph locations

Fig 4.5.1 - 53: First floor plates

Fig 4.6: Stanford Hall, second floor plan, showing photograph locations

Fig 4.6.1 - 27: Second floor plates

Fig 5.1: Plan of the ground floor of Cedar Mews, showing photograph locations

Fig 5.1.1 - 24: Cedar Mews plates

Fig 5.2: Plan and elevations of the Tennis Pavilion, showing photograph locations

Fig 5.2.1 - 12: Tennis Pavilion plates

Fig 5.3: Plan of the Game House, showing photograph locations

Fig 5.3.1 – 6: Game House plates

Fig 5.4: Plan of the Lido, showing photograph locations

Fig 5.4.1 – 18: Lido plates

Fig 5.5: Plan of the Garden Pavilion and Pools, showing photograph locations

Fig 5.5.1 – 12: Garden Pavilion and Pools plates

Fig 5.6: Plan of the Walled Garden, showing photograph locations

Fig 5.6.1 – 12: Walled Garden plates

Fig 5.7: Plans and elevations of the Bothy, showing photograph locations

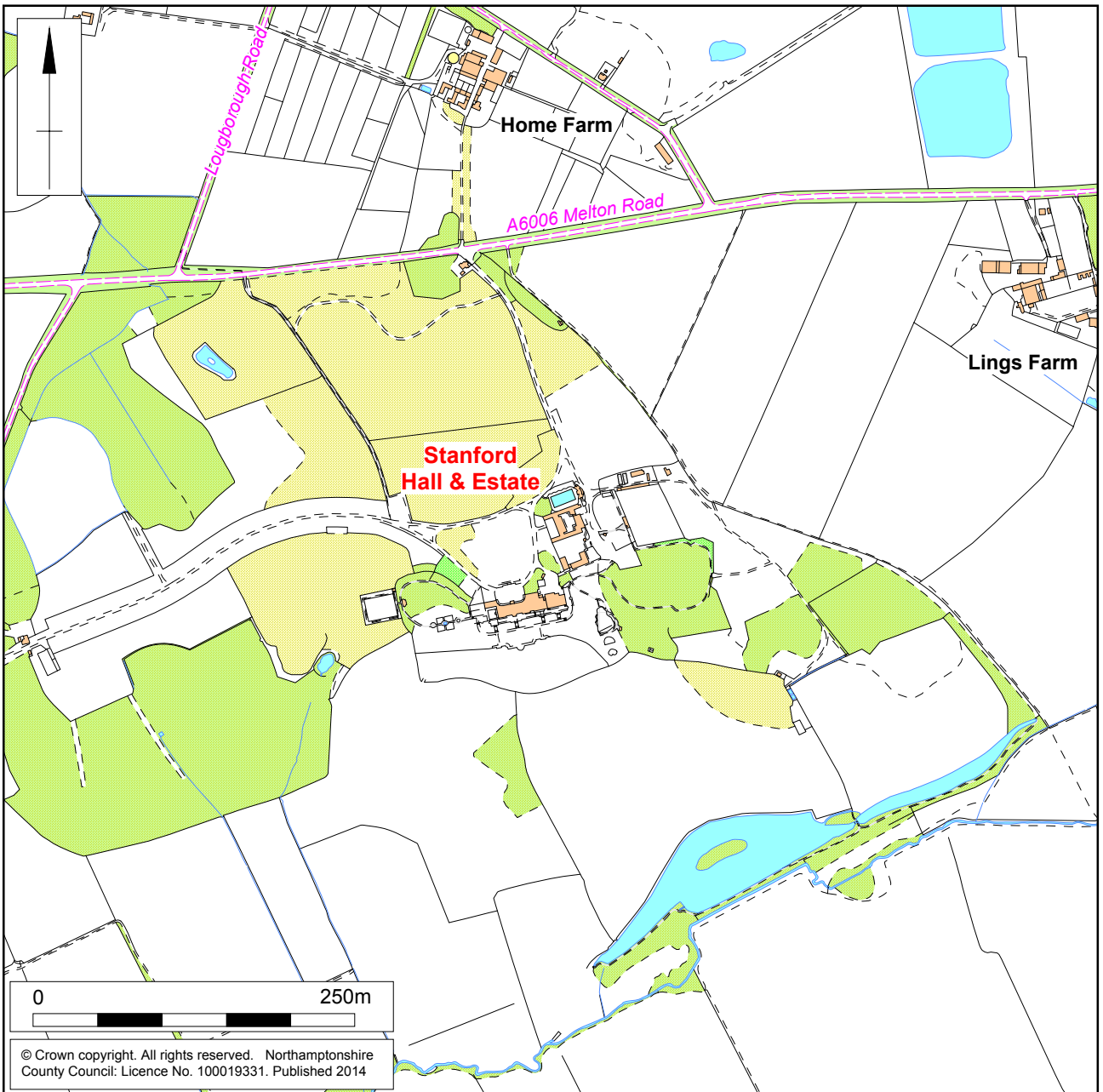
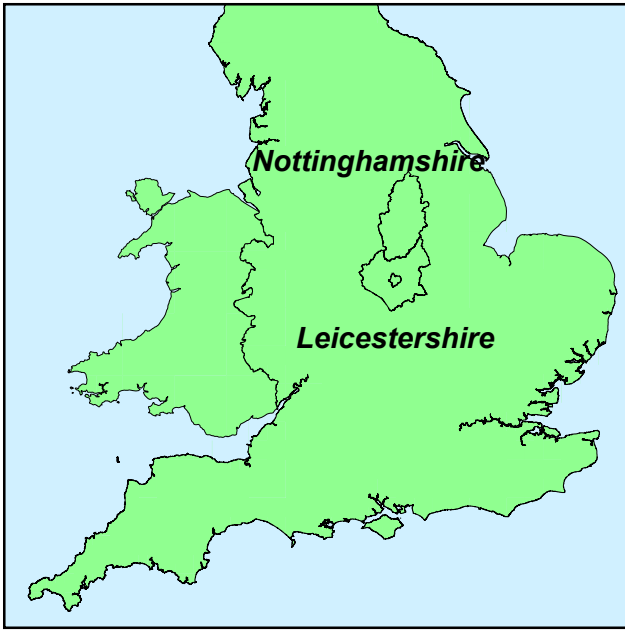
Fig 5.7.1 – 21: Bothy plates

Fig 5.8: Plan of the Greenhouses

Fig 5.8.1 – 6: Greenhouses plates

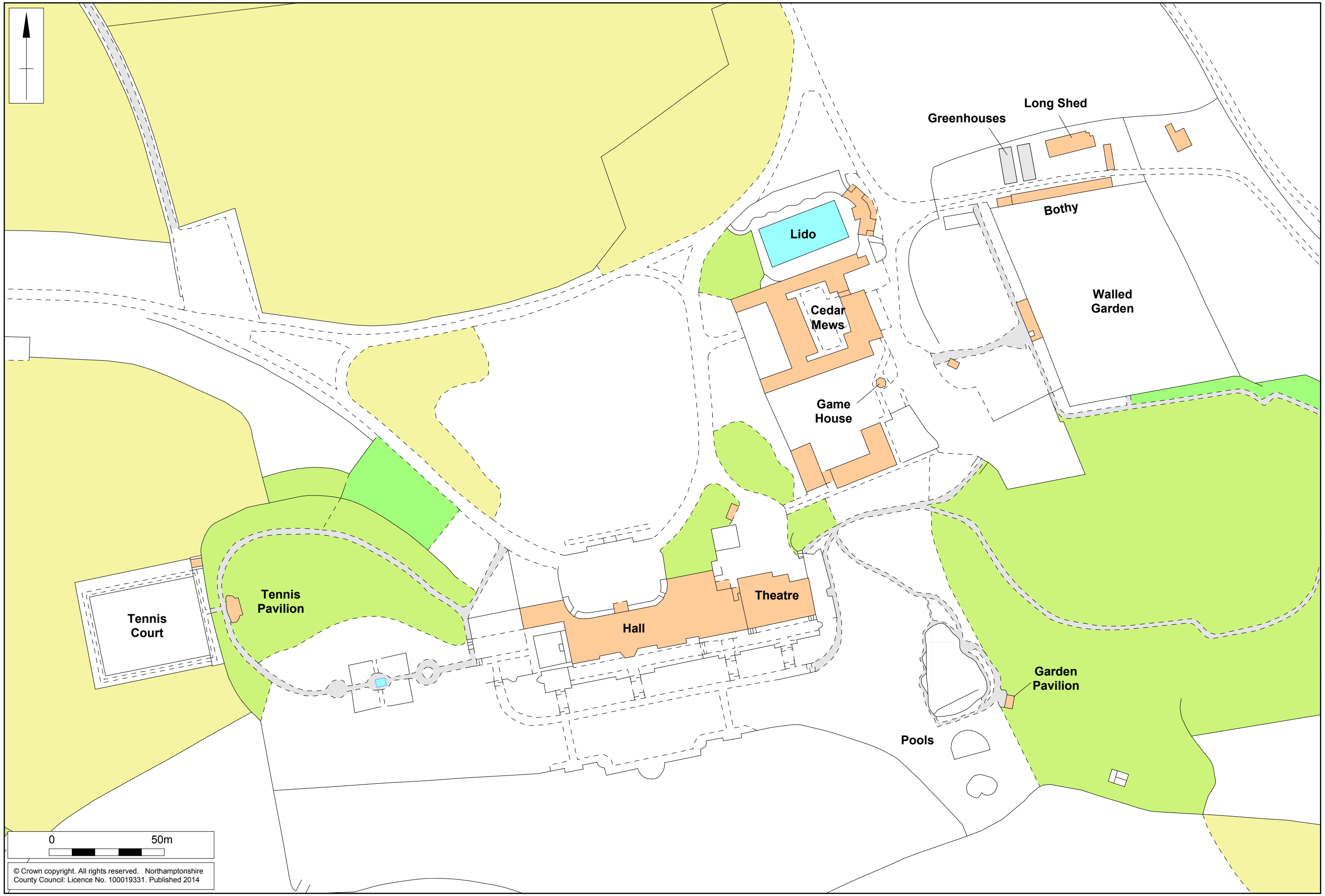
Fig 5.9: Plan and elevations of the Long Shed, showing photograph locations

Fig 5.9.1 – 6: Long Shed plates



Scale 1:10,000

Site location Fig 1



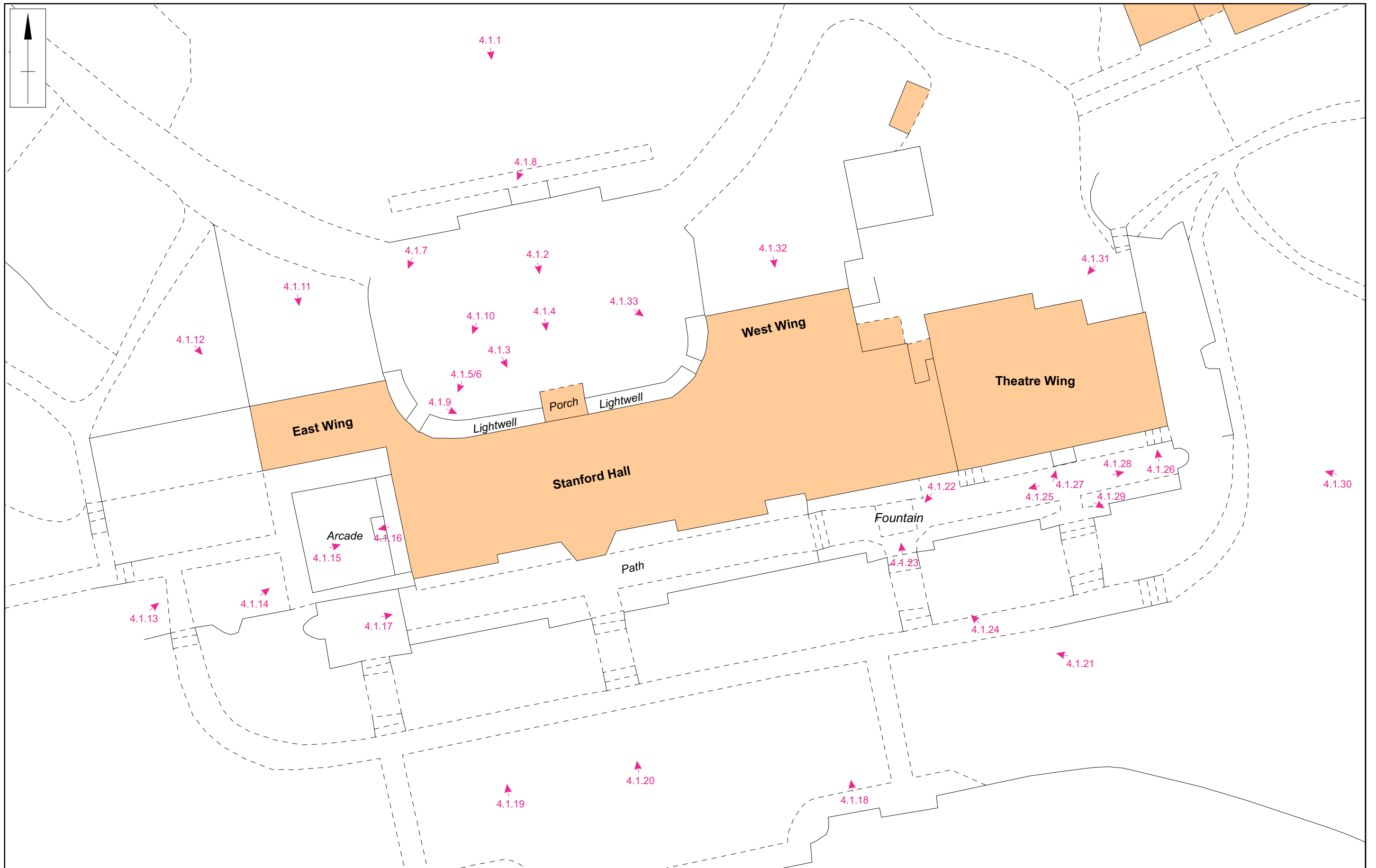
Scale 1:1500

The surveyed areas Fig 2

© Crown copyright. All rights reserved. Northamptonshire County Council: Licence No. 100019331. Published 2014

# 4.1 Exterior

Figs 4.1.1 - 4.1.33



Scale 1:500

Plan of the Hall, showing exterior photograph locations Fig 4.1



The exterior, looking south Fig 4.1.1



The central facade, looking south Fig 4.1.2



The north porch Fig 4.1.3



Pediment with cartouch over the central facade Fig 4.1.4



Decorative frieze Fig 4.1.5



Gargoyle on the north face of the east wing Fig 4.1.6





Decorative urn finial Fig 4.1.7



Decorative finial of the north garden wall Fig 4.1.8



Cellar light wells to the north of the central facade Fig 4.1.9



The west wing, looking south-west Fig 4.1.10



The east wing, looking south Fig 4.1.11



The east wing, looking north-west Fig 4.1.12



The east wing and arcade, looking north-east Fig 4.1.13



The 1930s arcade with decorative columns Fig 4.1.14



The decorative fountain and mosaic floor of the arcade Fig 4.1.15



The arcade, looking west Fig 4.1.16



View along the southern path, looking north-east Fig 4.1.17



View of the south facing elevation, looking north Fig 4.1.18



The eastern extent of the south elevation, looking north Fig 4.1.19



The central elements of the southern elevation, looking north Fig 4.1.20



View of the south elevation, looking north-west Fig 4.1.21



Commemorative fountain, south of the hall, looking south-west Fig 4.1.22



Detail of the fountain plaque Fig 4.1.23



The west, theatre wing, looking north Fig 4.1.24



View along the southern path, looking south-west Fig 4.1.25



Stair leading to secondary exit of the theatre Fig 4.1.26



Former stair to the air raid shelter below the theatre wing Fig 4.1.27



View point adjacent to the theatre, looking east Fig 4.1.28



The decorative elements of the southern garden wall Fig 4.1.29



General view of the Hall from the penguin pool, looking north-west Fig 4.1.30





The Theatre entrance and east wing, looking south-west Fig 4.1.31



The east wing, looking south Fig 4.1.32



The east wing, looking south-east Fig 4.1.33

## 4.2 The Cellar

---

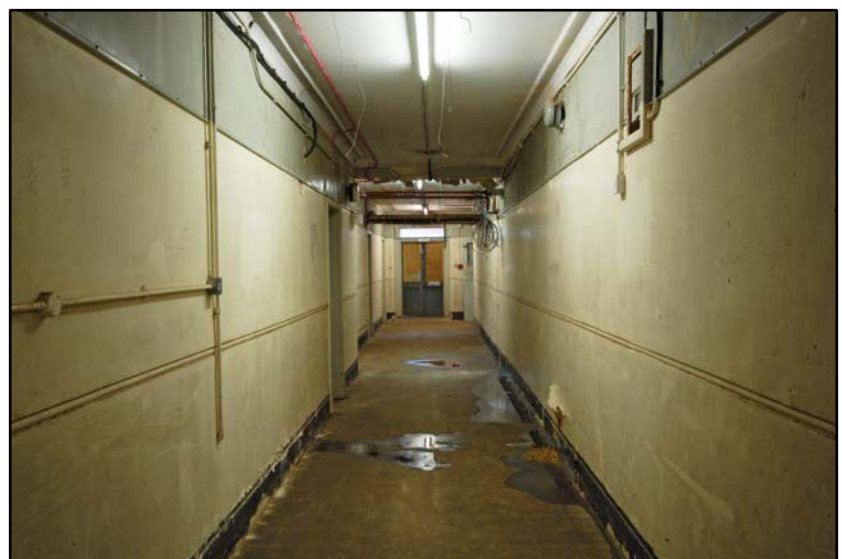
Figs 4.2.1 - 4.2.21



The cellar landing with stairs up Fig 4.2.1



Dumbwaiter elevator adjacent to cellar landing Fig 4.2.2



The northern cellar corridor, looking east Fig 4.2.3



Staff room in the northern extent of the cellars Fig 4.2.4



Staff room in the northern extent of the cellar Fig 4.2.5



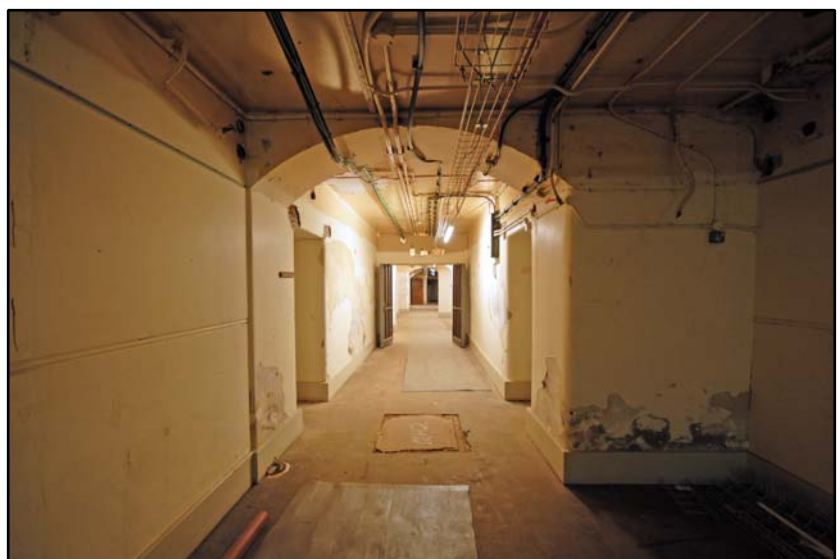
Example of panelled door to the staff rooms Fig 4.2.6



Cold storage room with stairs leading to the kitchens Fig 4.2.7



Blocked opening in the cold storage room Fig 4.2.8



The southern corridor of the cellar, looking west Fig 4.2.9



Large room adjacent to the former chapel Fig 4.2.10



The former cellar chapel Fig 4.2.11



Small room opposite the chapel Fig 4.2.12



Former bar and social area Fig 4.2.13



The cellar washroom Fig 4.2.14



Washing area within the washroom Fig 4.2.15



The south corridor, beyond the chapel Fig 4.2.16



The south corridor, looking west Fig 4.2.17



The southern workshop and boiler areas Fig 4.2.18





Workshop and store room Fig 4.2.19



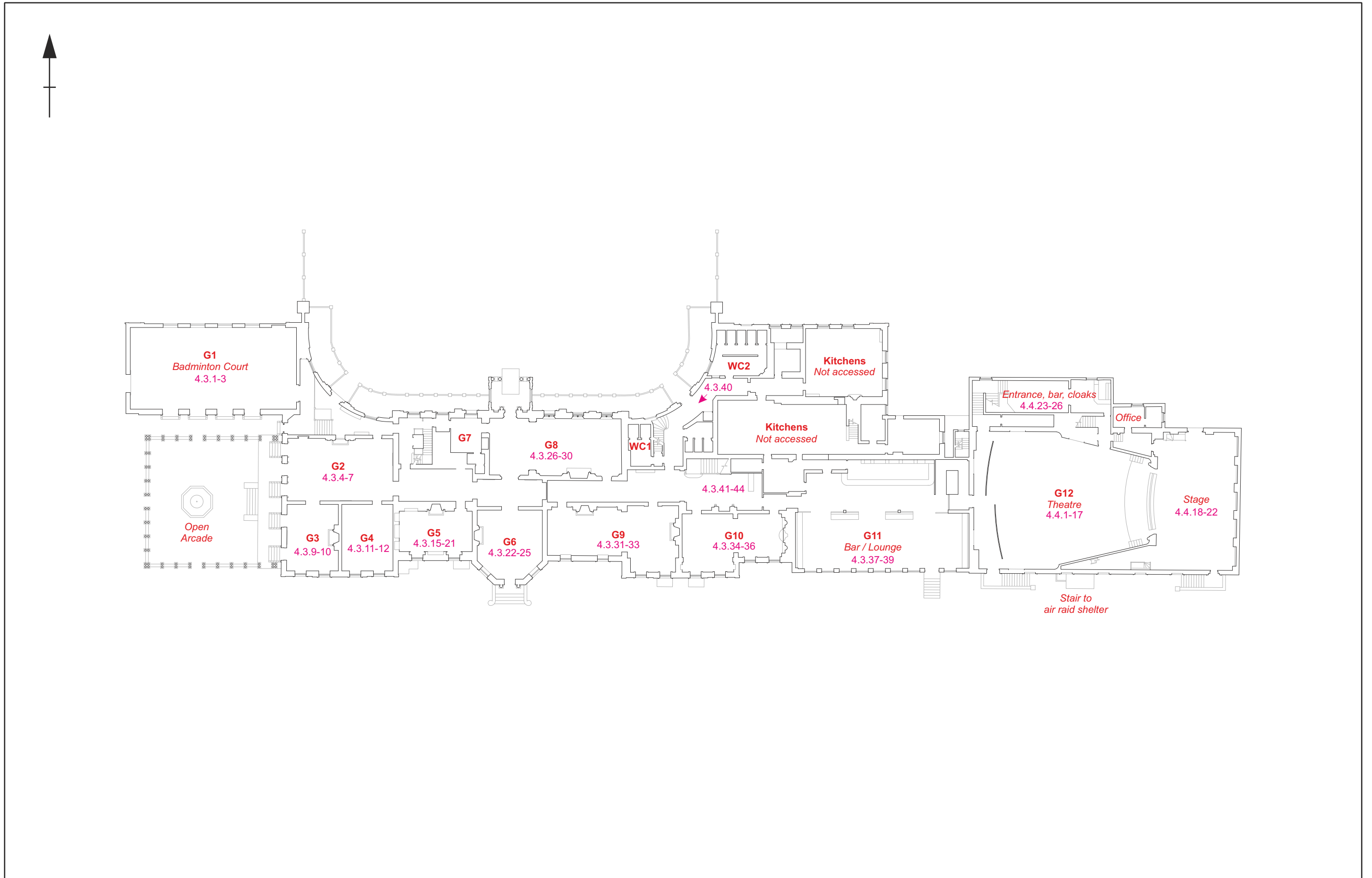
Former office within the cellar Fig 4.2.20



Boilers surviving *in-situ* Fig 4.2.21

# 4.3 - 4.4 The Ground Floor & Theatre wing

Figs 4.3.1 - 4.3.44 & 4.4.1 - 4.4.39



Scale 1:400

Stanford Hall, ground floor plan, showing photograph locations Fig 4.3



The badminton court, G1, looking west Fig 4.3.1



The badminton court, G1, looking south-east Fig 4.3.2



The *trompe l'oeil* painting on the east wall of the badminton court Fig 4.3.3



Room G2, looking north-west Fig 4.3.4



Room G2, looking east Fig 4.3.5



Room G2, the north elevation Fig 4.3.6



Room G2, the fake fire opening Fig 4.3.7



G2, detail of the parquet floor Fig 4.3.8



Room G3, looking north-east Fig 4.3.9



Room G3, the east elevation, looking west Fig 4.3.10



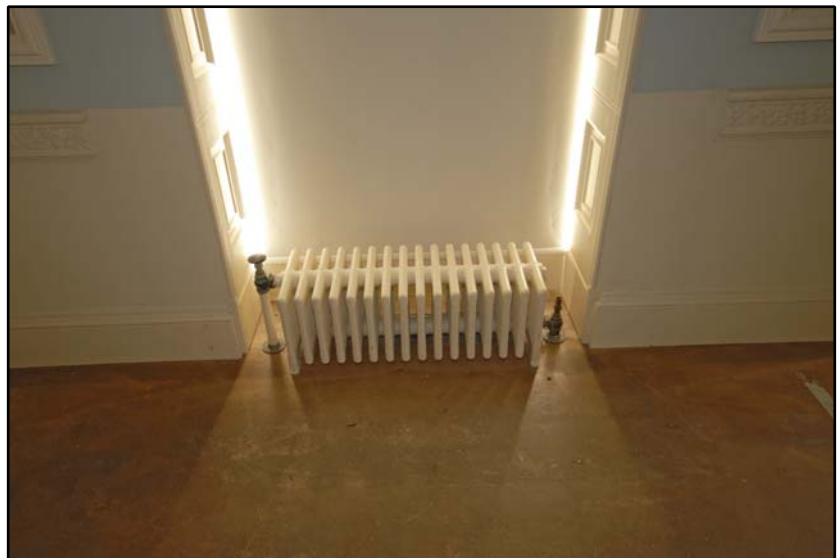
Room G4, looking north Fig 4.3.11



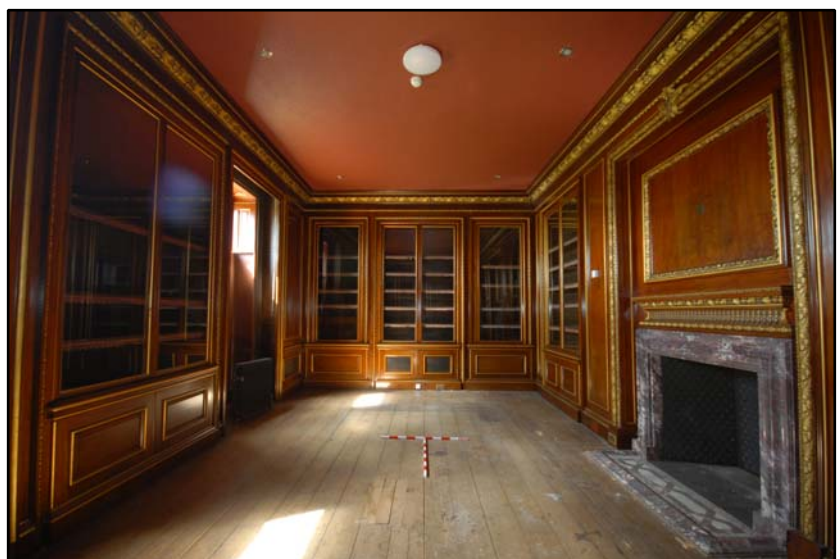
Room G4, looking south Fig 4.3.12



Detail of window shutter lock Fig 4.3.13



Room 4, detail of 1930's radiator Fig 4.3.14



Room G5, Sir Julien Cahn's study, looking west Fig 4.3.15



Room G4, looking north Fig 4.3.16



Room G4, detail of the fireplace Fig 4.3.17



Room G4, detail of window shutters and book cases Fig 4.3.18

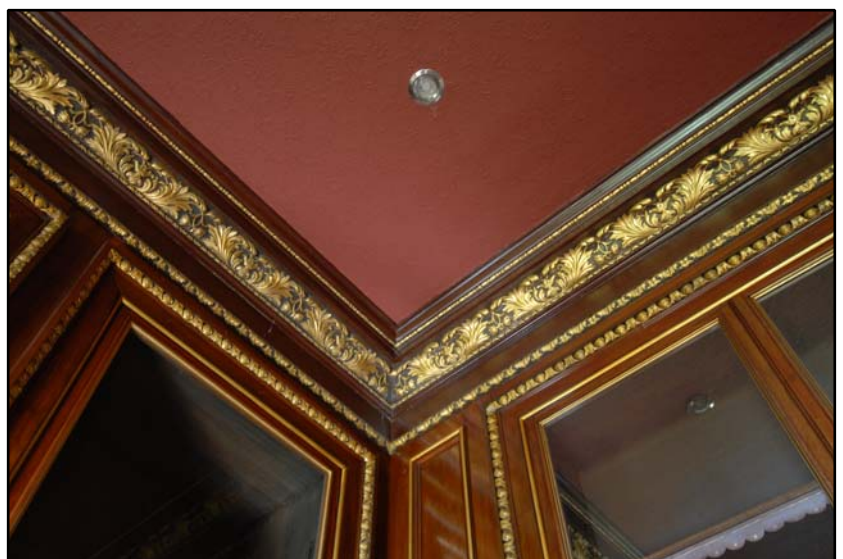




Detail of shutter hinges and lock Fig 4.3.19



Detail of ornate rim lock Fig 4.3.20



Room G4, detail of the cornice Fig 4.3.21



Room G6, looking south Fig 4.3.22



Room G6, looking north Fig 4.3.23



Room G6, looking west Fig 4.3.24



Room G6, detail of the fireplace Fig 4.3.25



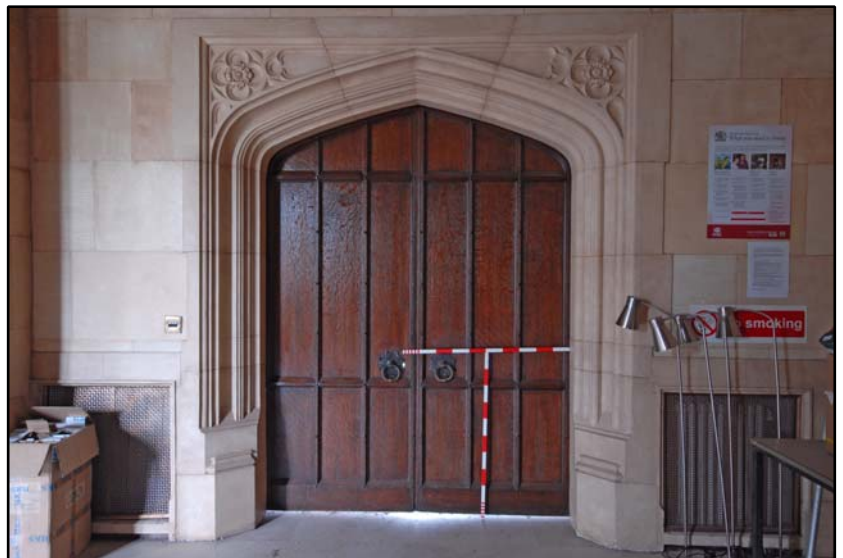
Room G8, the entrance hall, looking east Fig 4.3.26



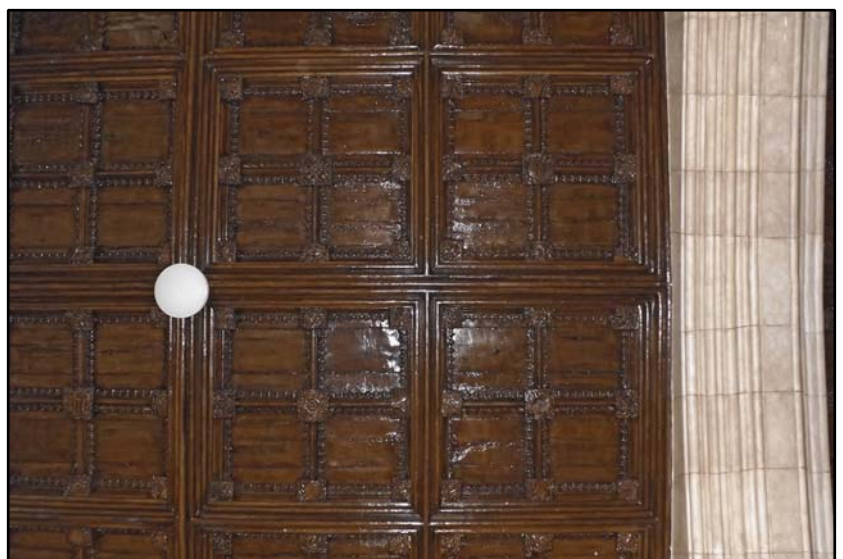
Room G8, the south elevation with central fireplace Fig 4.3.27



Room G8, looking south-west Fig 4.3.28



Room G8, detail of door and surround Fig 4.3.29



Room G8, Detail of the plaster ceiling Fig 4.3.30



Room G9, looking west Fig 4.3.31



Room G9, looking east Fig 4.3.32



Room G9, detail of fireplace and surrounding decorative elements Fig 4.3.33



Room G10, the east elevation with deco stylings Fig 4.3.34



Room G10, looking south-west Fig 4.3.35



Room G10, looking south Fig 4.3.36



Room G11, the lounge, looking west Fig 4.3.37



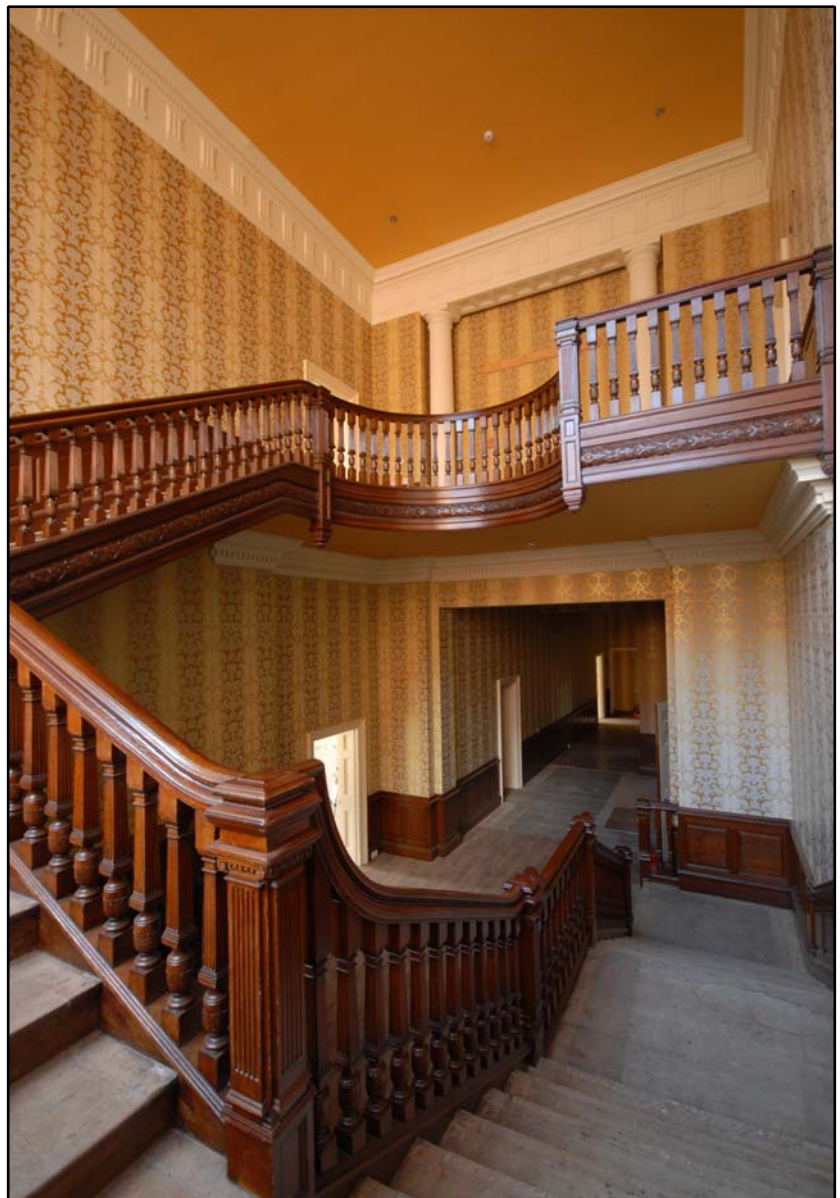
Room G11, looking south-east Fig 4.3.38



Room G11, the bar, looking west Fig 4.3.39



Stair landing, adjacent to the eastern WCs Fig 4.3.40



The main stair Fig 4.3.41





The main stair, ground floor landing Fig 4.3.42



The main stair, first floor landing Fig 4.3.43



Fireplace adjacent to the stair landing and room G10 Fig 4.3.44

## 4.4 The Theatre wing

---

Figs 4.4.1 - 4.4.39



The Deco Theatre, room G12, looking east toward the stage Fig 4.4.1



The Theatre, looking south-east Fig 4.4.2



The Theatre, looking west Fig 4.4.3



Detail of the murals and light fittings, looking north Fig 4.4.4



Detail of light fittings and murals, looking south Fig 4.4.5



Detail of the ornate light fittings Fig 4.4.6



The orchestra pit and Wurlitzer organ Fig 4.4.7



Detail of the Wurlitzer organ Fig 4.4.8



The north emergency exit Fig 4.4.9



Engraved glass within the theatre doors, depicting Gemini Fig 4.4.10



Engraved glass within the theatre doors, depicting Scorpio Fig 4.4.11



Engraved glass within the theatre doors, depicting Sagittarius Fig 4.4.12



Engraved glass within the theatre doors, depicting Pisces Fig 4.4.13



Engraved glass within the theatre doors, depicting Ares Fig 4.4.14



Engraved glass within the theatre doors, depicting Taurus Fig 4.4.15



Engraved glass within the theatre doors, depicting Aquarius Fig 4.4.16



Engraved glass within the theatre doors, depicting Capricorn Fig 4.4.17





The stage, looking north-east Fig 4.4.18



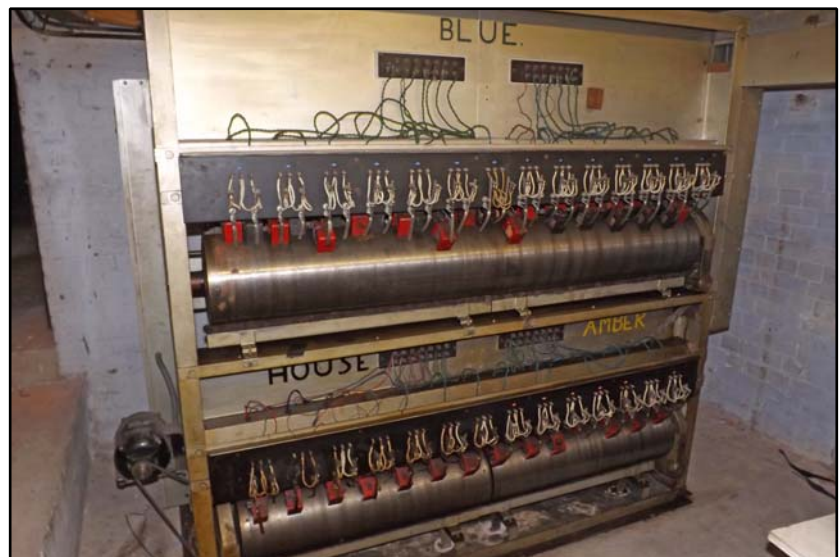
The stage, looking south Fig 4.4.19



The below stage area Fig 4.4.20



The below stage store rooms Fig 4.4.21



The light control system Fig 4.4.22



Entrance corridor to the cloak room, box office and toilets Fig 4.4.23



Stairs down to the cloak rooms, box office and toilets Fig 4.4.24



Chrome stair barrier Fig 4.4.25



Former box office door Fig 4.4.26



The access corridor between the Hall and Projector Suite, F16 Fig 4.4.27



Stair between the Theatre and Projector Suite, F16 Fig 4.4.28



The projector room, F16, looking north Fig 4.4.29



The projector room, F16, looking south Fig 4.4.30



Film storage preparation room Fig 4.4.31



Store room, looking south-east Fig 4.4.32



WC within the projector suite Fig 4.4.33



Detail of tiling and bakelite switches Fig 4.4.34



Detail of light fitting in the projector suite Fig 4.4.35



Entrance to the air raid shelter Fig 4.4.36



Interior of the air raid shelter Fig 4.4.37



Diesel generator in the air raid shelter Fig 4.4.38

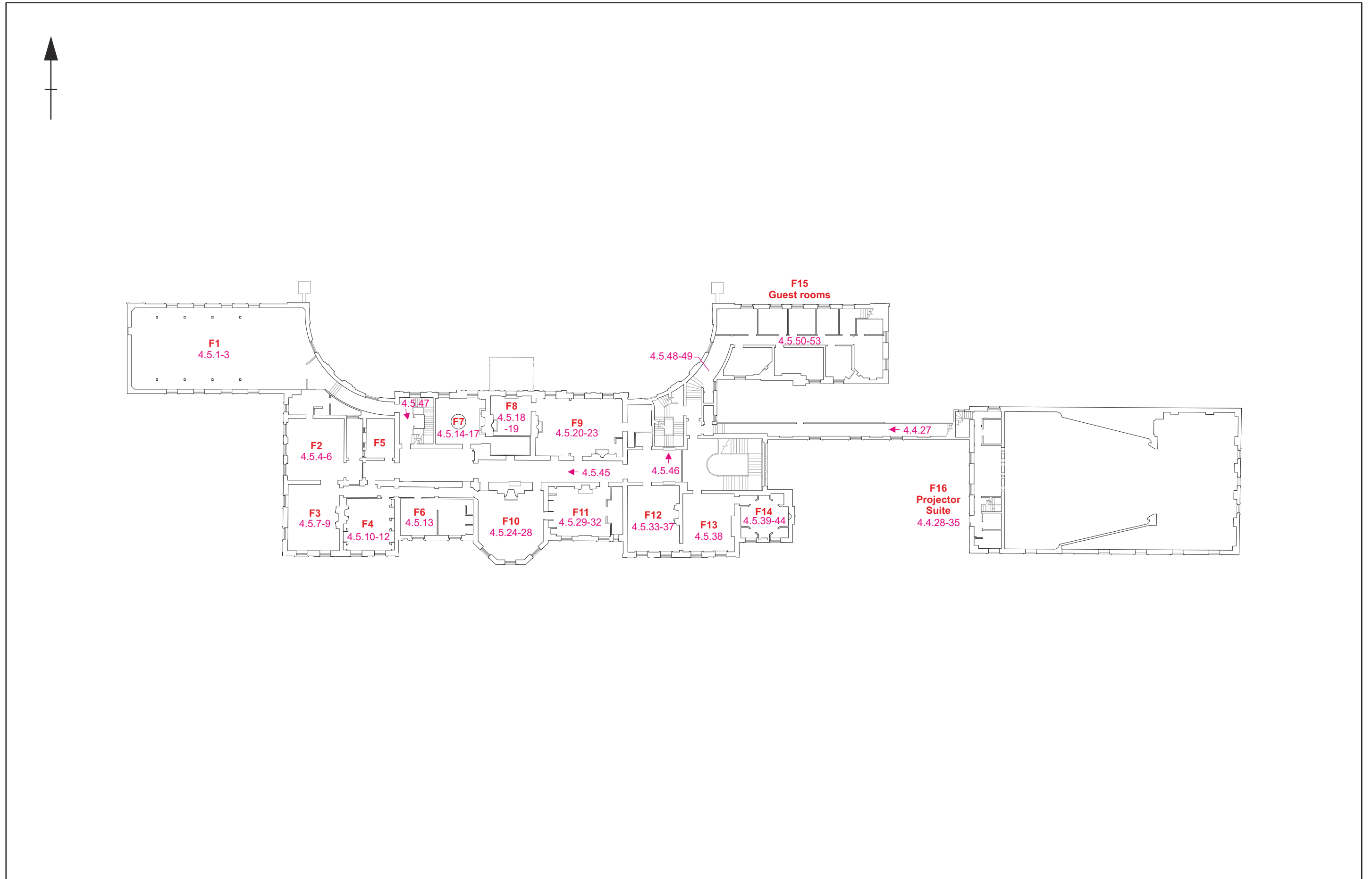


Sink within the air raid shelter Fig 4.4.39



# 4.5 The First Floor

Figs 4.5.1 - 4.5.53 & 4.4.27 - 4.4.35



Scale 1:400

Stanford Hall, first floor plan, showing photograph locations Fig 4.5



The former squash court and library, room F1, looking west Fig 4.5.1



Room F1, looking south-west Fig 4.5.2



Room F1, detail of the steel frame roof Fig 4.5.3



Room F2, looking north-west Fig 4.5.4



Room F2, the modern kitchen utilities Fig 4.5.5



Room F2, the blocked corridors Fig 4.5.6



Room F3, looking north Fig 4.5.7



Room F3, the east elevation with colonial style mouldings Fig 4.5.8



Room F3, looking south-west Fig 4.5.9



Room F4, the wardrobe, looking south-east Fig 4.5.10



Room F4, detail of wardrobes Fig 4.5.11



Room F4, the west elevation Fig 4.5.12



Room F6, with modern bathroom fittings Fig 4.5.13



Lady Cahn's bedroom, room F7, looking north-east Fig 4.5.14



Room F7, the Deco style fireplace Fig 4.5.15



Room F7, detail of the ceiling mirrors Fig 4.5.16



Room F7, detail of the Japanese style painting Fig 4.5.17



Room F8, looking north-east Fig 4.5.18



Room F8, looking west Fig 4.5.19



Room F9, looking south-east Fig 4.5.20





Room F9, looking south-west Fig 4.5.21



Room F9, the west elevation Fig 4.5.22



Room F9, detail of 1930s marble and chrome fireplace Fig 4.5.23



Sir Julien Cahn's bedroom, room F10, looking north-east Fig 4.5.24



Room F10, looking south Fig 4.5.25



Room F10, detail of the fireplace Fig 4.5.26



Room F10, detail of decorative elements Fig 4.5.27



Room F10, detail of concealed door opening Fig 4.5.28



Room F11, the "Arabesque" room, looking north-east Fig 4.5.29



Room F11, looking south-east Fig 4.5.30



Room F11, the north elevation Fig 4.5.31



Room F11, detail of the fireplace Fig 4.5.32



Room F12, looking south-east Fig 4.5.33



Room F12, looking north-east Fig 4.5.34



Room F12, detail of the fireplace Fig 4.5.35



Room F12, detail of the door, looking north Fig 4.5.36



Room F12, detail of decorative rim lock Fig 4.5.37



Room F13, looking south-east Fig 4.5.38



The Deco bathroom, room F14, looking south-east Fig 4.5.39



Room F14, looking west Fig 4.5.40



Room F14, detail of the floor tiling Fig 4.5.41



Room F14, detail of tortoise in the centre of the floor tiles Fig 4.5.42



Room F14, detail of original tap fittings Fig 4.5.43



Room F14, detail of shower head Fig 4.5.44

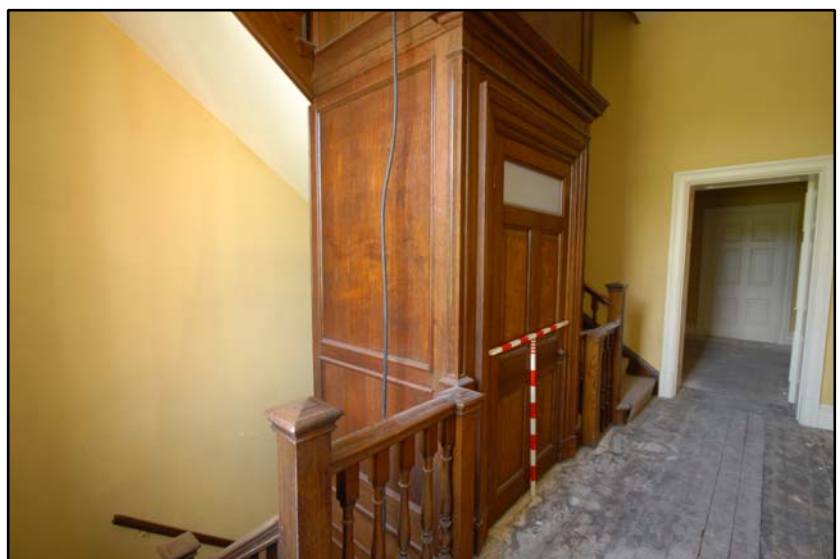




The central corridor, looking west Fig 4.5.45



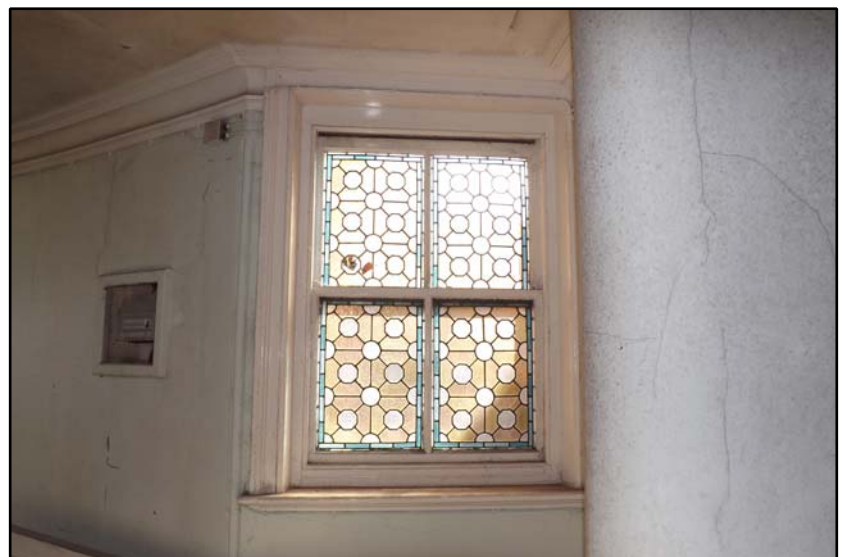
Detail of first floor radiators with decorative coverings Fig 4.5.46



Detail of stair case and lift Fig 4.5.47



The corridor between the hall and the west wing, F15 Fig 4.5.48



Leaded window with coloured glass in corridor adjacent to F15 Fig 4.5.49



The central corridor of the west wing, F15, looking east Fig 4.5.50



Example of the rooms within F15 Fig 4.5.51



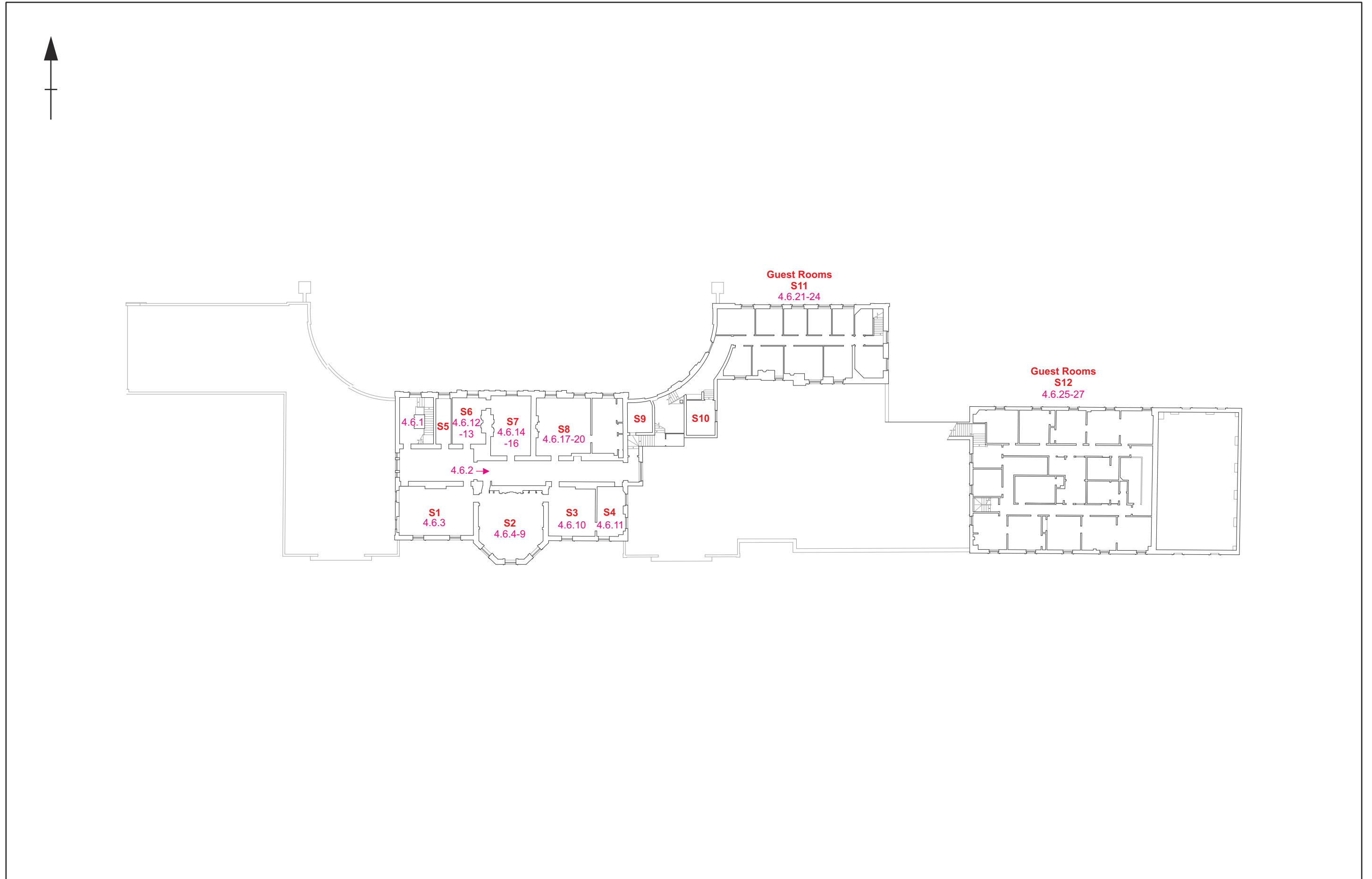
Example of the rooms within F15 Fig 4.5.52



Example of the rooms within F15 Fig 4.5.53

# 4.6 The Second Floor

Figs 4.6.1 - 4.6.27



Scale 1:400

Stanford Hall, Second floor plan, showing photograph locations Fig 4.6



The second floor landing with lift Fig 4.6.1



The central corridor, looking east Fig 4.6.2



Room S2, looking south-west Fig 4.6.3



Room S2, looking south-west Fig 4.6.4



Room S2, looking north with concealed door open Fig 4.6.5



Room S2, looking west with the concealed door closed Fig 4.6.6



Room S2, detail of fake books with concealed door latch at bottom right Fig 4.6.7



Detail of the concealed door opening latch Fig 4.6.8



Room S2, detail of the fireplace Fig 4.6.9



Room S3, looking south-west Fig 4.6.10



Room S4, looking north-east Fig 4.6.11



Room S5, looking north-east Fig 4.6.12





Room S5, detail of the fireplace Fig 4.6.13



Modern door insertion between rooms S6 and S7 Fig 4.6.14



Room S7, looking south-west Fig 4.6.15



Room S7, the west elevation Fig 4.6.16



Room S8, looking west Fig 4.6.17



Room S8, detail of the fireplace Fig 4.6.18



Room S8, looking east toward the modern partition Fig 4.6.19



The eastern extent of room S8, looking north Fig 4.6.20



The central corridor of S11, looking east Fig 4.6.21



Example of the rooms in S11 Fig 4.6.22



Example of the rooms in S11 Fig 4.6.23



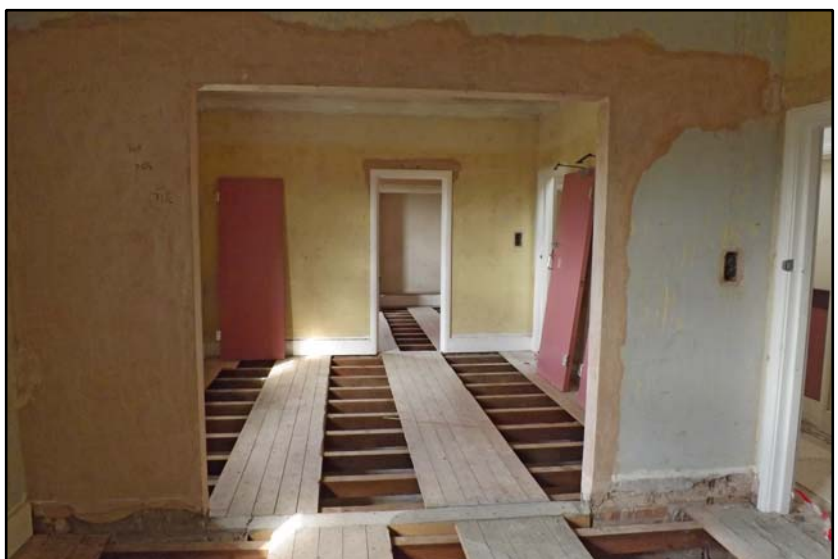
Example of the rooms in S11 Fig 4.6.24



Guest rooms, S12, the north corridor, looking east Fig 4.6.25



Example of the rooms within S12 Fig 4.6.26



Detail of the door furniture Fig 4.2.27

# 5.1 Cedar Mews

Figs 5.1.1 - 5.1.24



Scale 1:200

Plan of the ground floor of Cedar Mews, showing photograph locations Fig 5.1



View of Cedar Mews, looking north-west Fig 5.1.1



The main, western facade, looking north-west Fig 5.1.2



The north elevation of the south wing Fig 5.1.3



The south elevation of the north wing Fig 5.1.4



The cupola, looking north-east Fig 5.1.5



Detail of the cupola weathervane Fig 5.1.6





Detail of the clock, dated 1983 Fig 5.1.7



Interior of the north wing Fig 5.1.8



Example of the rooms in the central block Fig 5.1.9



Entrance Hall of the central block, leading to the garden Fig 5.1.10



Remains of former stair Fig 5.1.11



Interior of the central block Fig 5.1.12



Interior of the south wing, showing the poor condition of the building Fig 5.1.13



Interior of the south wing Fig 5.1.14



View of the first floor, looking north Fig 5.1.15



Former joist slots below the cupola Fig 5.1.16



The structural supporting beams of the cupola Fig 5.1.17



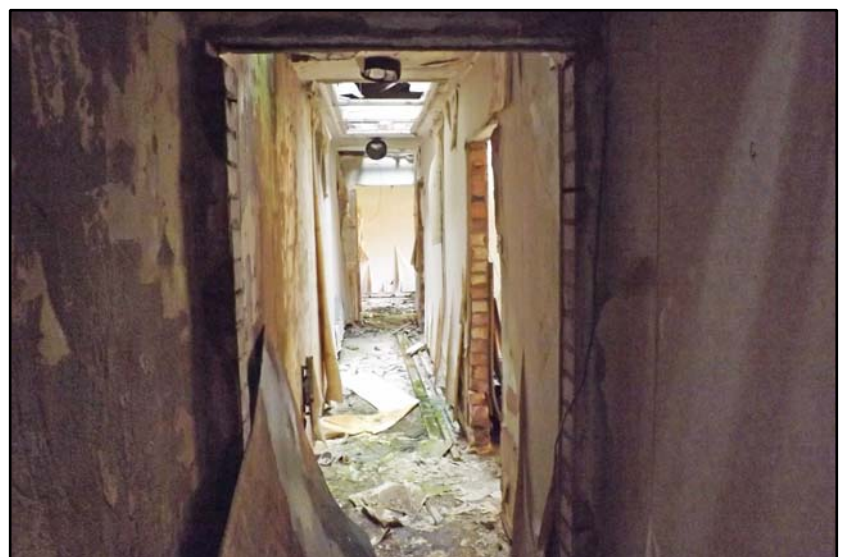
View of the first floor, looking north Fig 5.1.18



The 1950's extension to the rear of the Mews Fig 5.1.19



Interior of the 1950's extension, showing its poor condition Fig 5.1.20



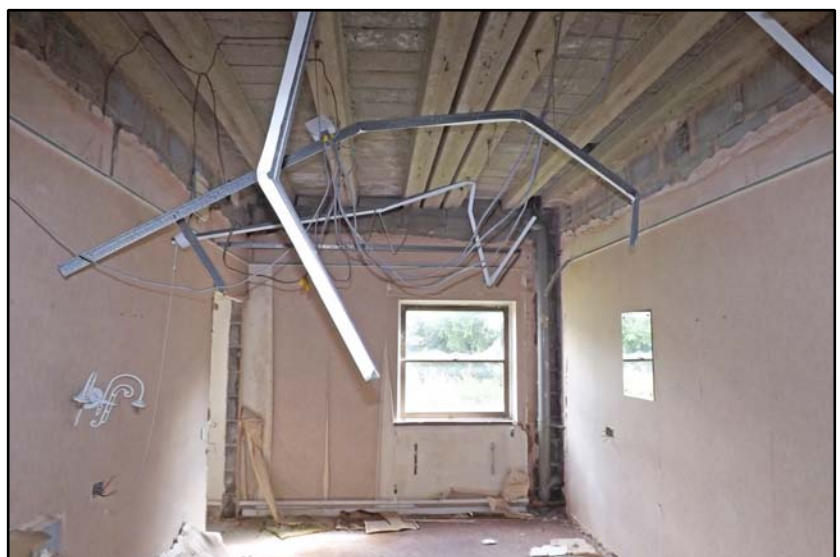
Interior of the 1950's extension Fig 5.1.21



The 1980's extensions as viewed from the garden Fig 5.1.22



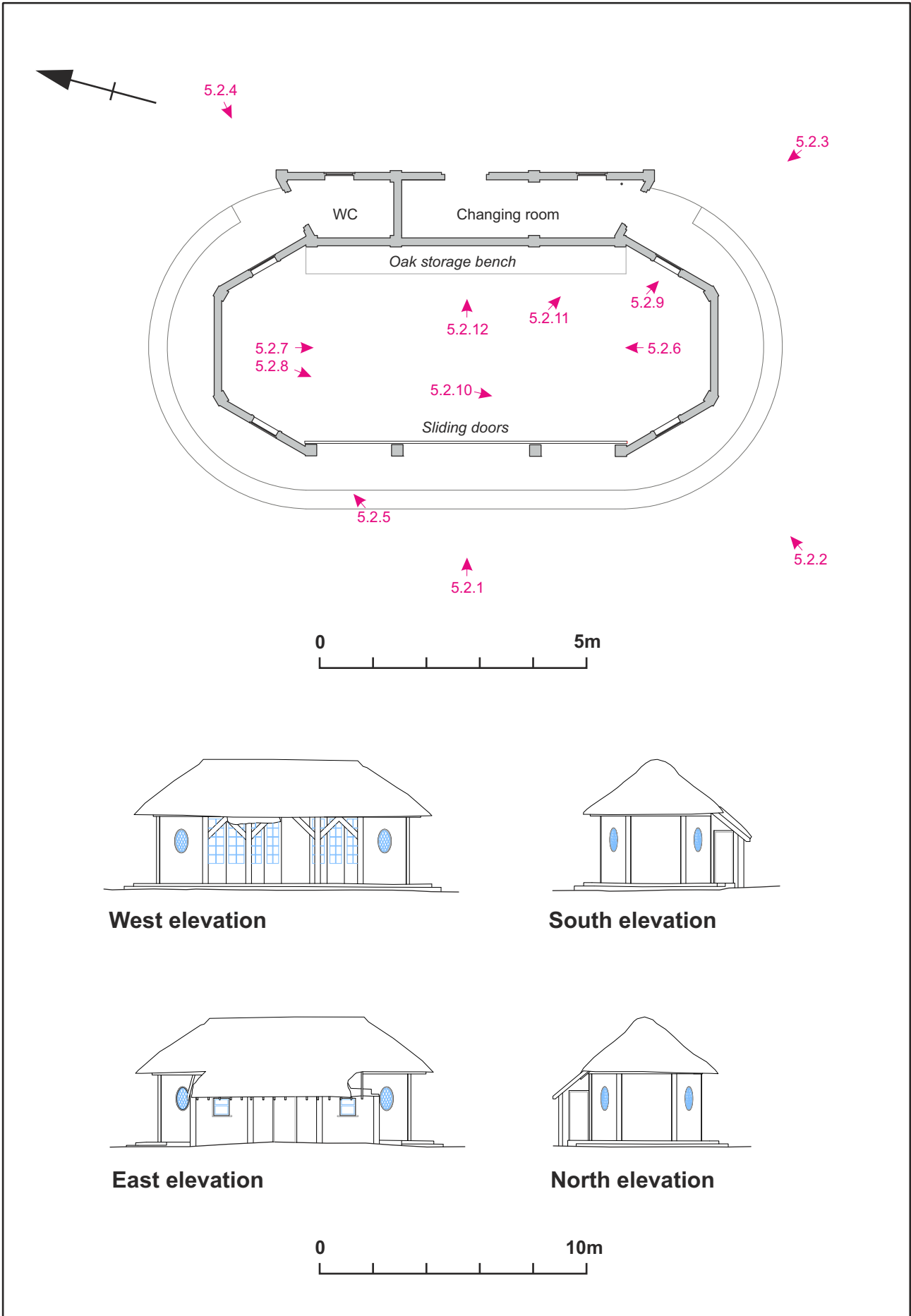
The central corridor of the 1980's extension Fig 5.1.23



Example of the rooms within the 1980's extensions Fig 5.1.24

# 5.2 Tennis Pavilion

Figs 5.2.1 - 5.2.12



Scales 1:100 & 1:200

Plan and elevations of the tennis pavilion showing photograph locations Fig 5.2



The main, west elevation of the tennis pavilion Fig 5.2.1



The south elevation of the tennis pavilion Fig 5.2.2



The south elevation of the tennis pavilion Fig 5.2.3





The north elevation with entrance to the rear toilet Fig 5.2.4



Detail of the eaves Fig 5.2.5



Interior of the pavilion, looking north Fig 5.2.6



Interior of the pavilion, looking south Fig 5.2.7



Detail of the sliding doors Fig 5.2.8



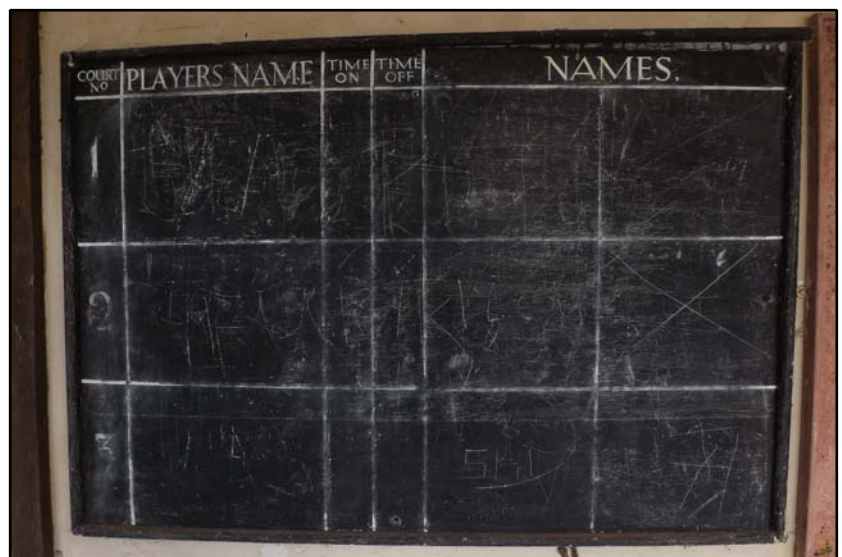
Detail of the windows Fig 5.2.9



Detail of the brick, herringbone pattern floor Fig 5.2.10



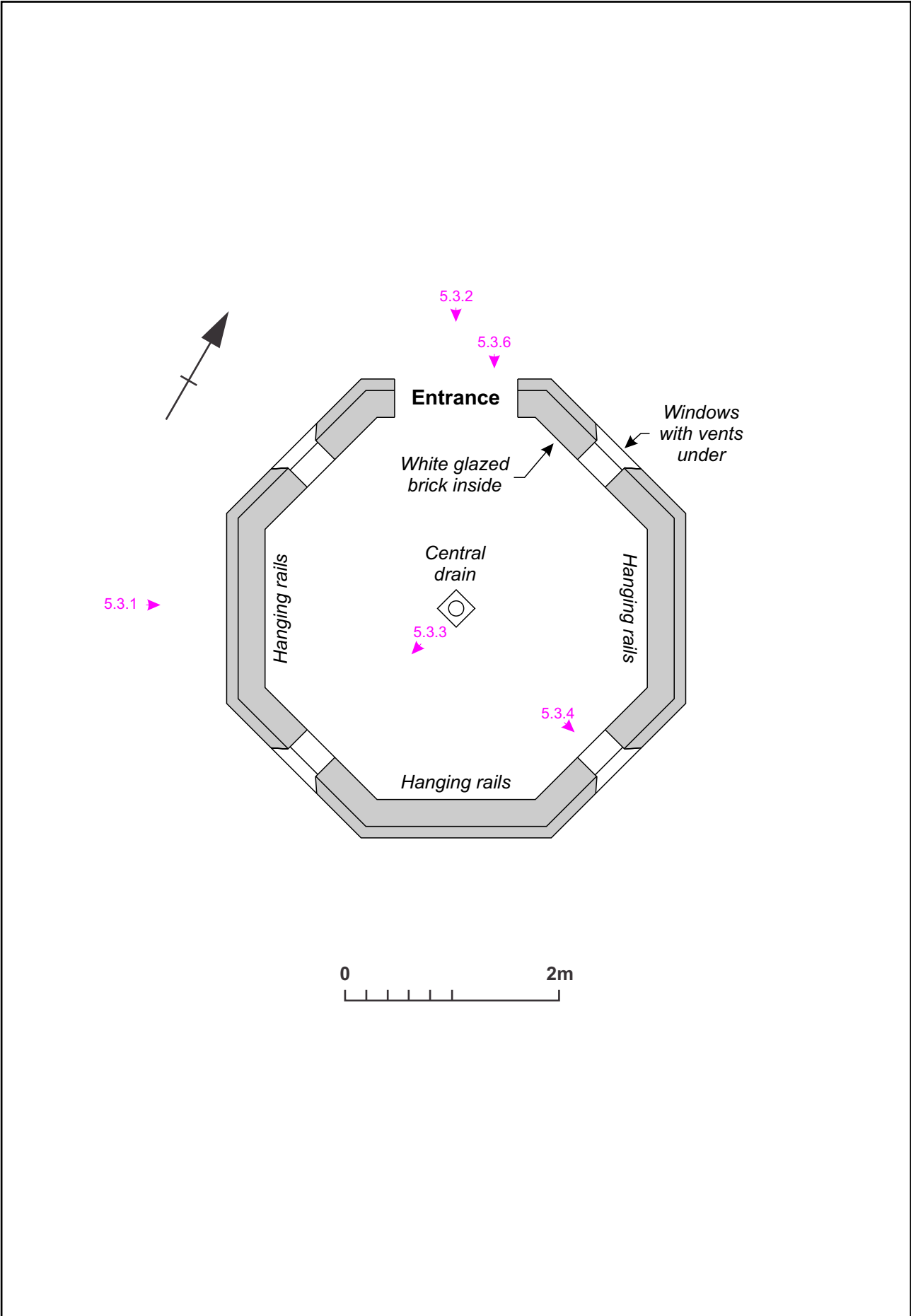
Detail of the oak storage benches Fig 5.2.11



Detail of the scoreboard Fig 5.2.12

# 5.3 Game House

Figs 5.3.1 - 5.3.6



Scale 1:50

Plan of the game house, showing photograph locations Fig 5.3



The south-west elevation, looking north-east Fig 5.3.1



The north-west elevation, looking south-east Fig 5.3.2



The interior, looking north-east Fig 5.3.3



Detail of the windows and hanging rails Fig 5.3.4



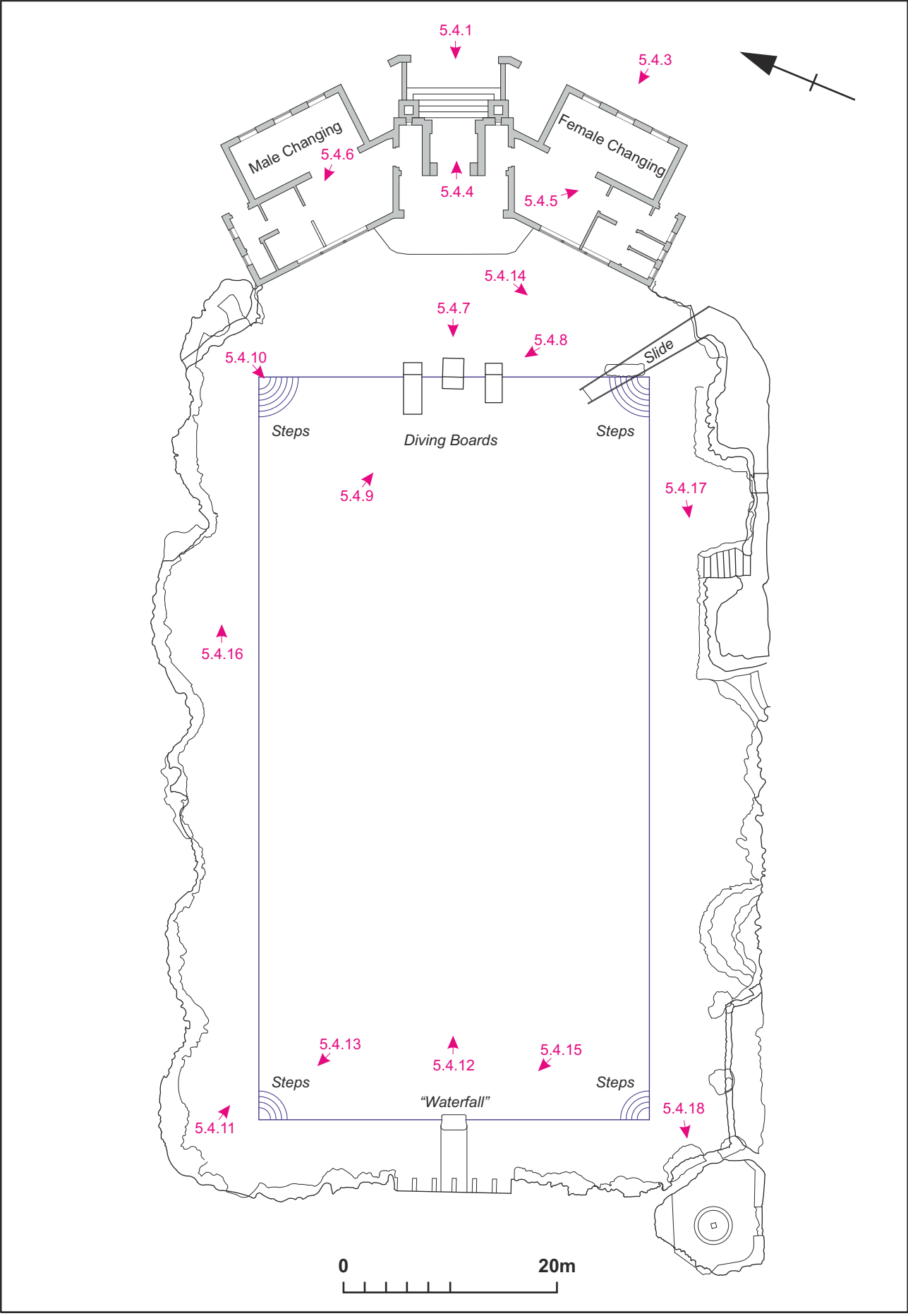
The ceiling hanging rails Fig 5.3.5



Detail of the door furniture Fig 5.3.6

# 5.4 Lido

Figs 5.4.1 - 5.4.18



Scale 1:500

Plan of the Lido, showing photograph locations Fig 5.4



The main frontage of the Lido, looking south-west Fig 5.4.1



The north-east elevation Fig 5.4.2



The south-east elevation Fig 5.4.3





Interior view of the original entrance doors Fig 5.4.4



The female changing rooms Fig 5.4.5



The male changing rooms Fig 5.4.6



The concrete diving boards, looking south-west Fig 5.4.7



The concrete diving boards, looking north-west Fig 5.4.8



The underside of the diving boards Fig 5.4.9



General view of the swimming pool, looking south-west Fig 5.4.10



View of the swimming pool, looking west Fig 5.4.11



View of the swimming pool, looking north-east Fig 5.4.12



Concentric steps in the western shallow end of the pool Fig 5.4.13



Water slide adjacent to the female changing rooms Fig 5.4.14



The concrete waterfall at the west end of the pool Fig 5.4.15



Stone grottos at the northern edge of the pool Fig 5.4.16



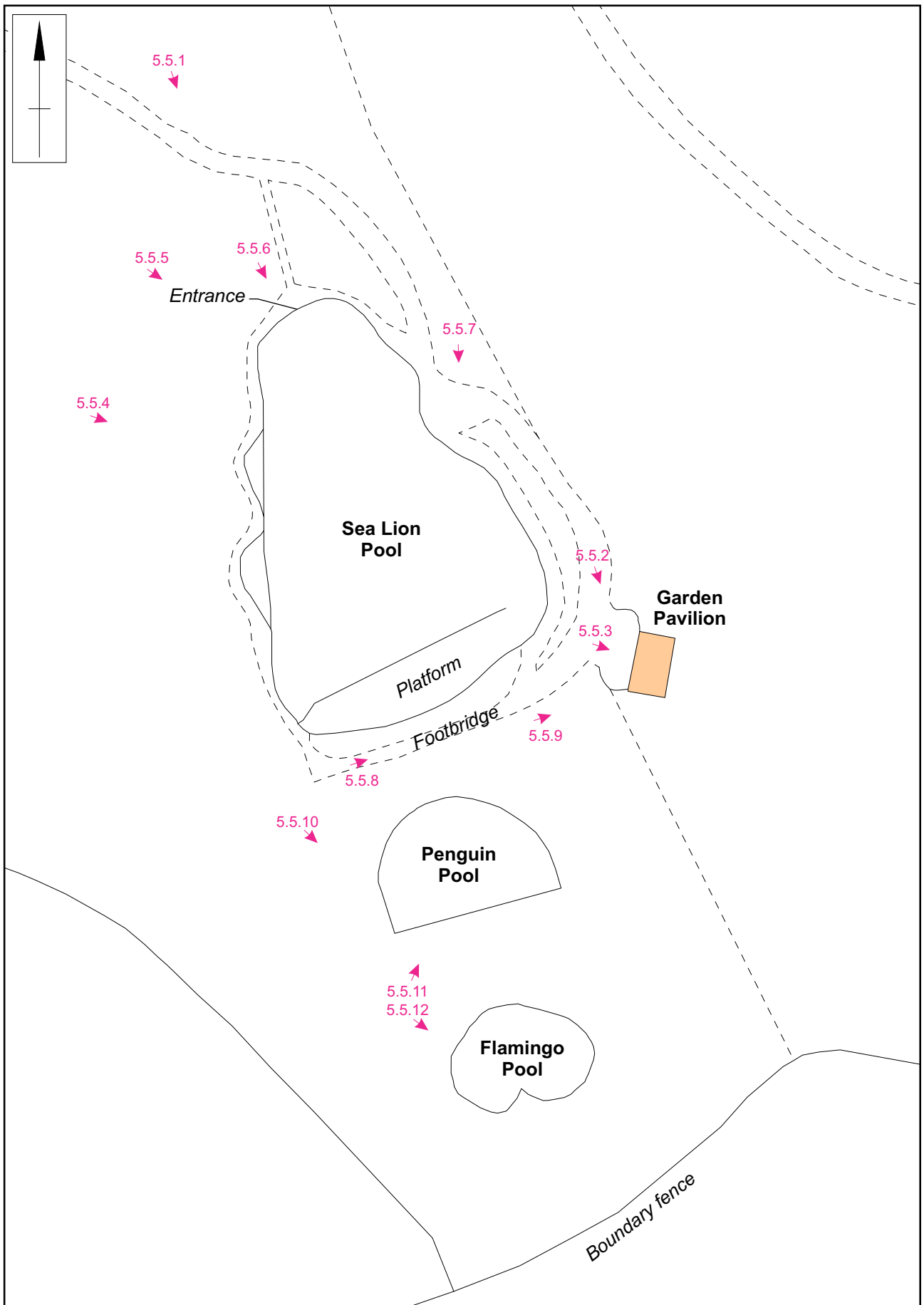
Stone grottos at the southern edge of the pool Fig 5.4.17



Interior of the western grotto Fig 5.4.18

# 5.5 Garden Pavilion and Pools

Figs 5.5.1 - 5.5.12



Scale 1:500

Plan of the Garden Pavilion and Pools, showing photograph locations

Fig 5.5



View of the Pools and Garden Pavilion within the wider landscape Fig 5.5.1



The Pavilion, looking south-east Fig 5.5.2



The main facade of the Pavilion, looking east Fig 5.5.3



The sea lion pool, looking south-east Fig 5.5.4



General view of the sea lion pool, looking south Fig 5.5.5



The sea lion pool entrance Fig 5.5.6





The sea lion pool, looking south-west Fig 5.5.7



The footbridge south of the sea lion pool Fig 5.5.8



18th century, decorative urn Fig 5.5.9



View of the overgrown penguin and flamingo pools Fig 5.5.10



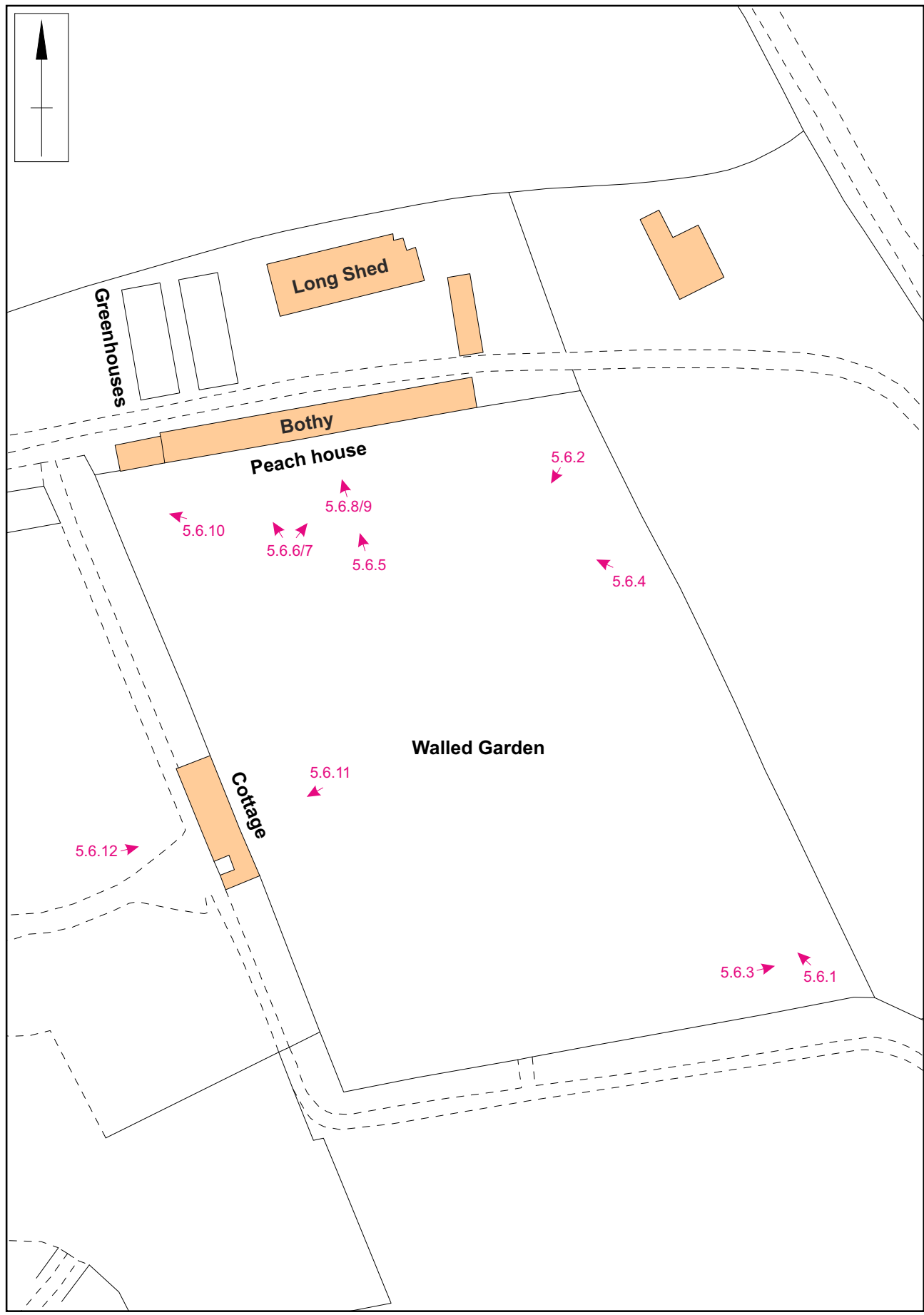
The overgrown penguin pool Fig 5.5.11



The flamingo pool, looking south-east Fig 5.5.12

# 5.6 Walled Garden and Peach House

Figs 5.6.1 - 5.6.12



Scale 1:750

Plan of the walled garden, showing photograph locations 5.6



General view of the walled garden, looking north-west Fig 5.6.1



General view of the walled garden, looking south-west Fig 5.6.2



Side entrance in the south-east corner of the garden Fig 5.6.3



The peach house looking north Fig 5.6.4



The former peach house to the rear of the bothy Fig 5.6.5



The former peach house, looking north-west Fig 5.6.6



The peach house, looking north-east Fig 5.6.7



Remnant mechanism of the peach house Fig 5.6.8



The door from the bothy to the peach house Fig 5.6.9



Entrance to the garden, adjacent to the peach house Fig 5.6.10



The 19th century cottage, looking west Fig 5.6.11



The west elevation of the cottage, looking east Fig 5.6.12

# 5.7 Bothy

Figs 5.7.1 - 5.7.21



Scale 1:125

Plans and elevation of the Bothy, showing photograph locations Fig 5.7





The north elevation of the Bothy, looking south-west Fig 5.7.1



The central facade of the Bothy, looking south Fig 5.7.2



Detail of the main, central door to the Bothy Fig 5.7.3



Detail of the central clock Fig 5.7.4



The eastern shed Fig 5.7.5



The eastern shed, looking west Fig 5.7.6



The western extension Fig 5.7.7



Interior of the western extension Fig 5.7.8



Entrance hall of the Bothy with door to the Peach House Fig 5.7.9



General view of the potting shed, looking east Fig 5.7.10



Interior of the potting shed, looking west Fig 5.7.11



Detail of ground floor window with wooden sliding shutters Fig 5.7.12



First floor head gardeners' kitchen, looking east Fig 5.7.13



Detail of the kitchen range Fig 5.7.14



First floor head gardeners' kitchen, looking west Fig 5.7.15



First floor room, looking north Fig 5.7.16



First floor room, looking west Fig 5.7.17



Detail of window at first floor Fig 5.7.18



Light wells and former stair to Bothy cellar Fig 5.7.19



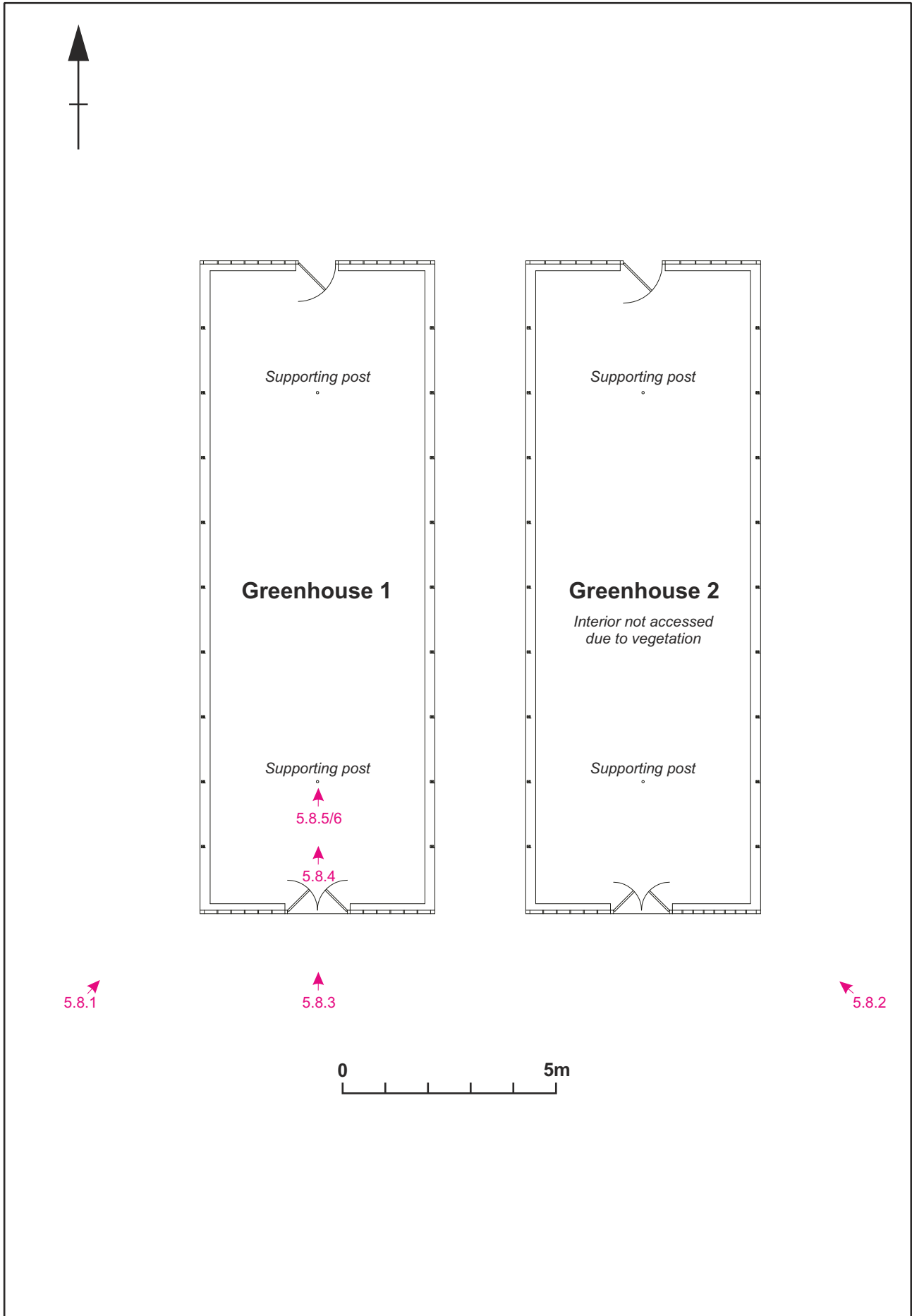
The Bothy cellar, looking east Fig 5.7.20



The Bothy cellar, looking west Fig 5.7.21

# 5.8 Greenhouses

Figs 5.8.1 - 5.8.6



Scale 1:125

Plan of the greenhouses, showing photograph locations Fig 5.8





Greenhouse 1, looking north-east Fig 5.8.1



Greenhouse 2, looking north-west Fig 5.8.2



The south elevation of Greenhouse 1 Fig 5.8.3



The interior of Greenhouse 1 Fig 5.8.4



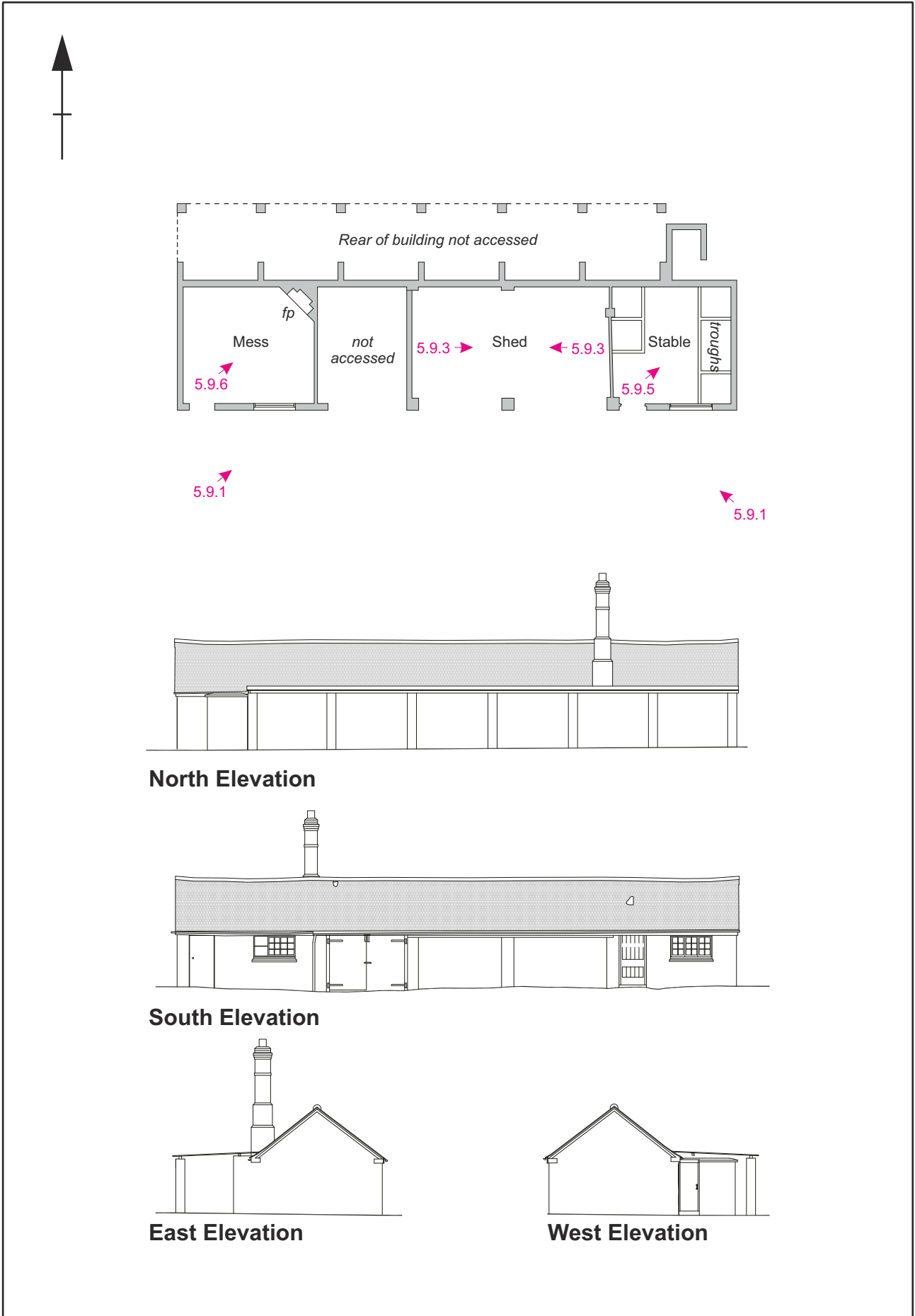
Detail of winding mechanism Fig 5.8.5



Detail of the roof structure Fig 5.8.6

# 5.9 Long Shed

Figs 5.9.1 - 5.9.6



Scale 1:200

Plan and elevations of the Long Shed, showing photograph locations

Fig 5.9



The Long Shed, looking north-west Fig 5.9.1



The Long Shed, looking north-west with the remains of a former greenhouse in the foreground Fig 5.9.2



The central shed, looking west Fig 5.9.3



The central shed, looking east Fig 5.9.4



The stable, showing feeding troughs Fig 5.9.5



The mess, with fireplace and cast iron wood burner Fig 5.9.6



MOLA  
Bolton House  
Wootton Hall Park  
Northampton  
NN4 8BN  
01604 700 493  
[www.mola.org.uk](http://www.mola.org.uk)  
[sparry@mola.org.uk](mailto:sparry@mola.org.uk)