



**Historic Building Recording at Stanford Hall Estate
Stanford on Soar, Nottinghamshire
August - November 2014**

Volume 3

Report No. 14/211

Authors: Tim Upson-Smith
Amir Bassir

Illustrator: Amir Bassir



© MOLA Northampton 2014
Project Manager: Amir Bassir
Planning ref: 12/02070/HYBRID, 12/0207/LBC
NGR: SK 55871 23895

MOLA Northampton
Bolton House
Wootton Hall Park
Northampton
NN4 8BN
www.mola.org.uk
sparry@mola.org.uk

**HISTORIC BUILDING RECORDING AT
STANFORD HALL ESTATE
STANFORD ON SOAR
NOTTINGHAMSHIRE
AUGUST - NOVEMBER
Volume 3**

Report No. 14/211

Quality control and sign off:

| Issue No. | Date approved: | Checked by: | Verified by: | Approved by: | Status: | Reason for Issue: |
|------------------|-----------------------|--------------------|---------------------|----------------------------|-------------------------|--|
| 1 | 29.10.14 | Andy Chapman | Pat Chapman | Steve Parry | Draft for Client Review | Draft for client review |
| 2 | 23.01.15 | | | ARUP | Draft for Review | Revisions following comments by client |
| 3 | 23.02.15 | | | Rushcliffe Borough Council | Final Report | Revisions following comments by Rushcliffe Borough Council |

Authors: Tim Upson-Smith

Amir Bassir

Illustrator: Amir Bassir

© MOLA Northampton 2014

MOLA Northampton
Bolton House
Wootton Hall Park
Northampton
NN4 8BN
01604 700 493
www.mola.org.uk
business@mola.org.uk

Figures

Fig 1: Site location

Fig 2: The surveyed areas

Fig 5.1: Plan of the ground floor of Cedar Mews, showing photograph locations

Fig 5.1.1 - 24: Cedar Mews plates

Fig 5.2: Plan and elevations of the Tennis Pavilion, showing photograph locations

Fig 5.2.1 - 12: Tennis Pavilion plates

Fig 5.3: Plan of the Game House, showing photograph locations

Fig 5.3.1 – 9: Game House plates

Fig 5.4: Plan of the Lido, showing photograph locations

Fig 5.4.1 – 18: Lido plates

Fig 5.5: Plan of the Garden Pavilion and Pools, showing photograph locations

Fig 5.5.1 – 12: Garden Pavilion and Pools plates

Fig 5.6: Plan of the Walled Garden, showing photograph locations

Fig 5.6.1 – 12: Walled Garden plates

Fig 5.7: Plans and elevations of the Bothy, showing photograph locations

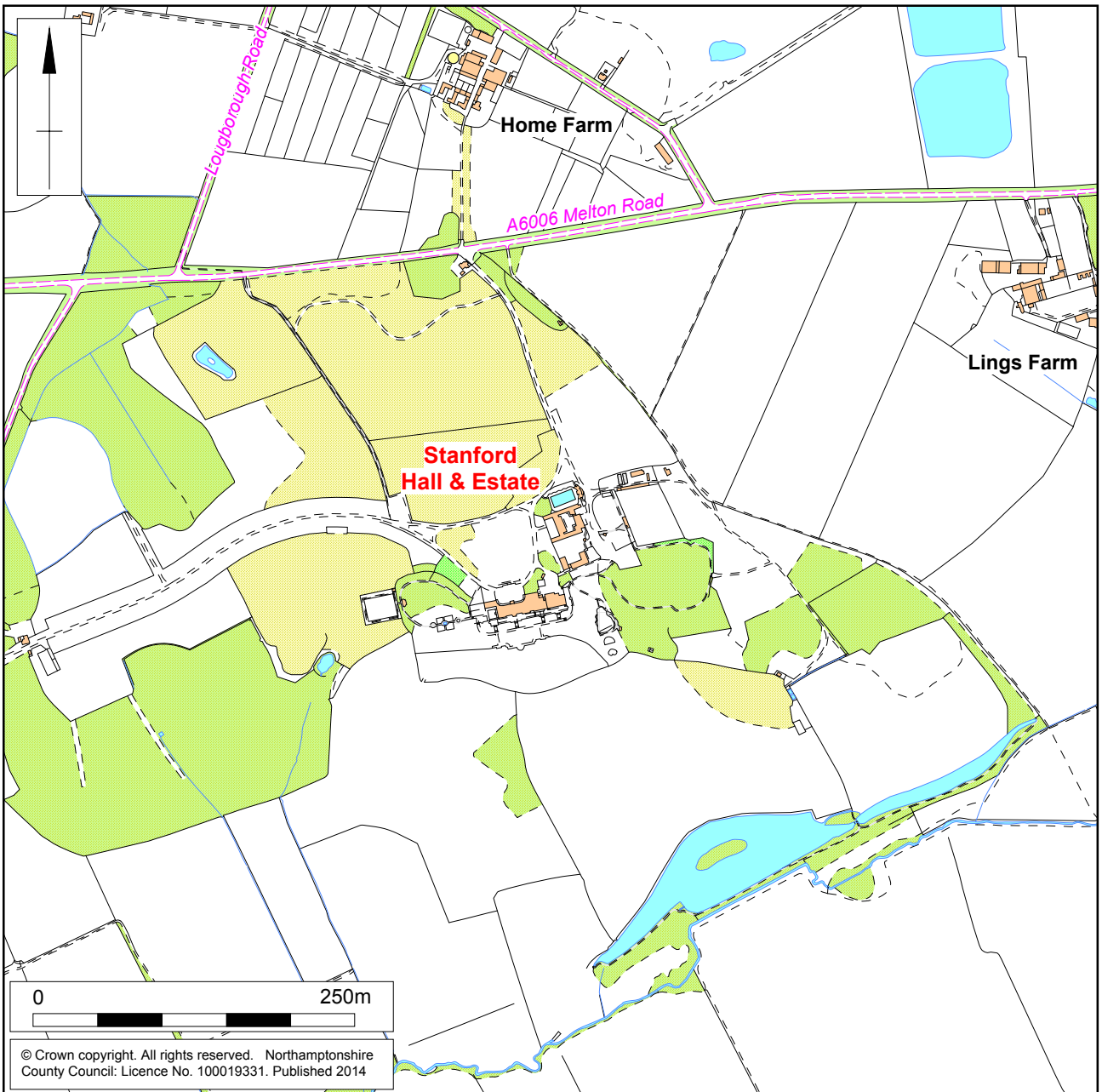
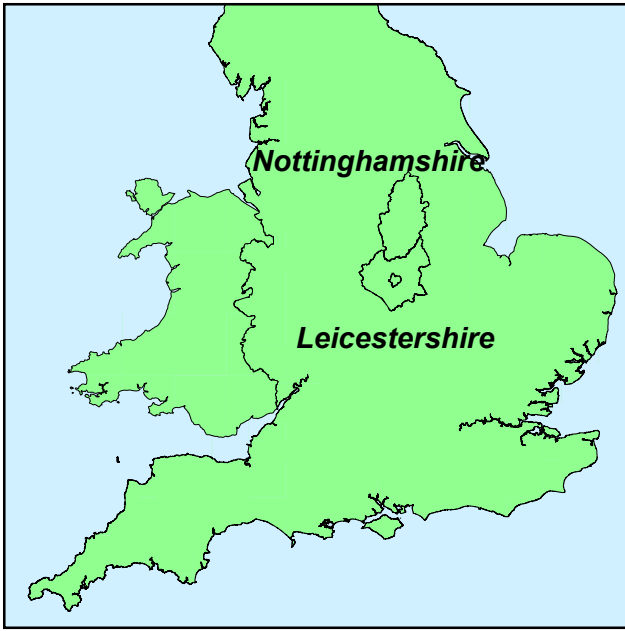
Fig 5.7.1 – 21: Bothy plates

Fig 5.8: Plan of the Greenhouses

Fig 5.8.1 – 6: Greenhouses plates

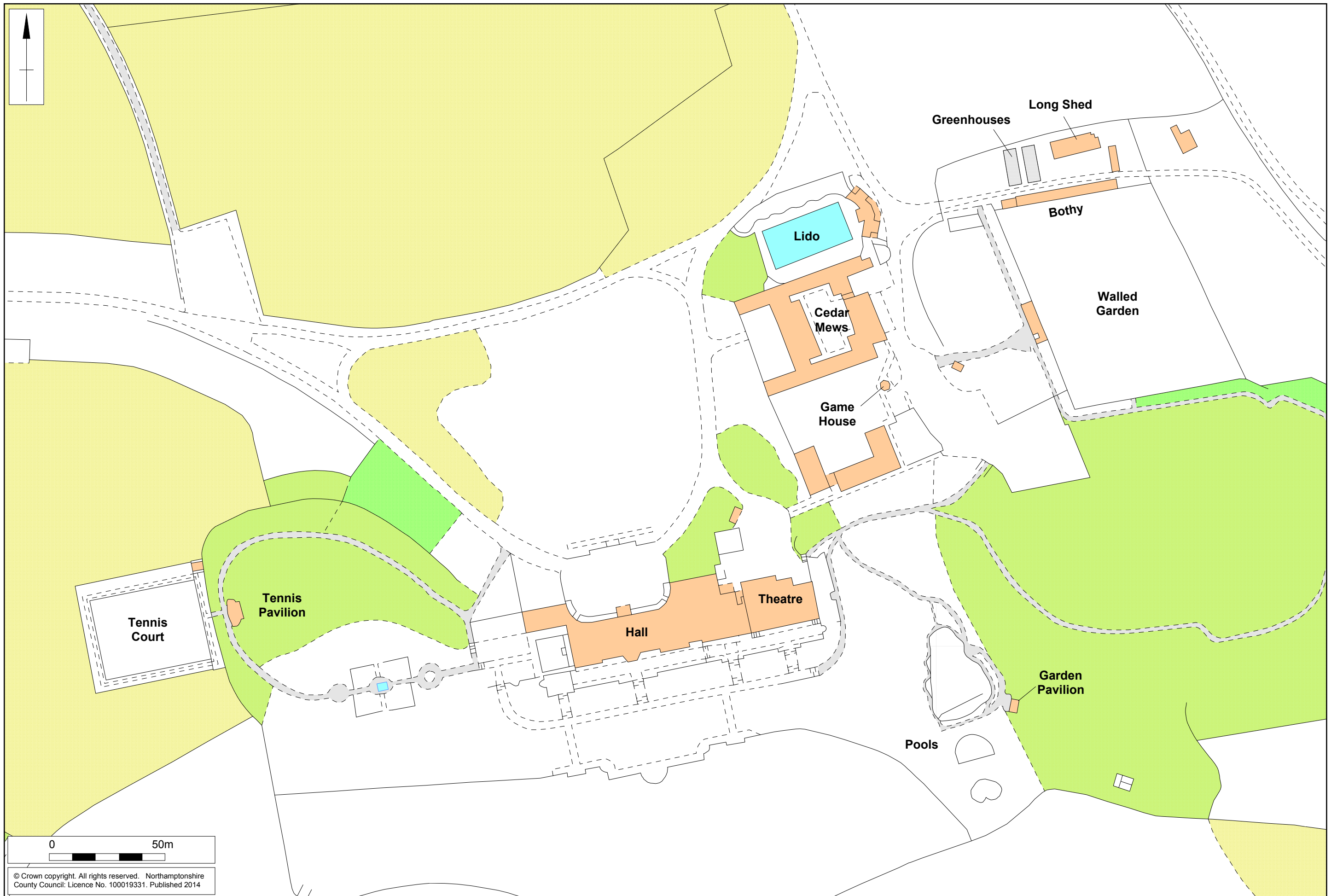
Fig 5.9: Plan and elevations of the Long Shed, showing photograph locations

Fig 5.9.1 – 6: Long Shed plates



Scale 1:10,000

Site location Fig 1



Scale 1:1500

The surveyed areas Fig 2

© Crown copyright. All rights reserved. Northamptonshire County Council: Licence No. 100019331. Published 2014

5.1 Cedar Mews

Figs 5.1.1 - 5.1.24



Scale 1:200

Plan of the ground floor of Cedar Mews, showing photograph locations Fig 5.1



View of Cedar Mews, looking north-west Fig 5.1.1



The main, western facade, looking north-west Fig 5.1.2



The north elevation of the south wing Fig 5.1.3



The south elevation of the north wing Fig 5.1.4



The cupola, looking north-east Fig 5.1.5



Detail of the cupola weathervane Fig 5.1.6



Detail of the clock, dated 1983 Fig 5.1.7



Interior of the north wing Fig 5.1.8



Example of the rooms in the central block Fig 5.1.9



Entrance Hall of the central block, leading to the garden Fig 5.1.10



Remains of former stair Fig 5.1.11



Interior of the central block Fig 5.1.12



Interior of the south wing, showing the poor condition of the building Fig 5.1.13



Interior of the south wing Fig 5.1.14



View of the first floor, looking north Fig 5.1.15



Former joist slots below the cupola Fig 5.1.16



The structural supporting beams of the cupola Fig 5.1.17



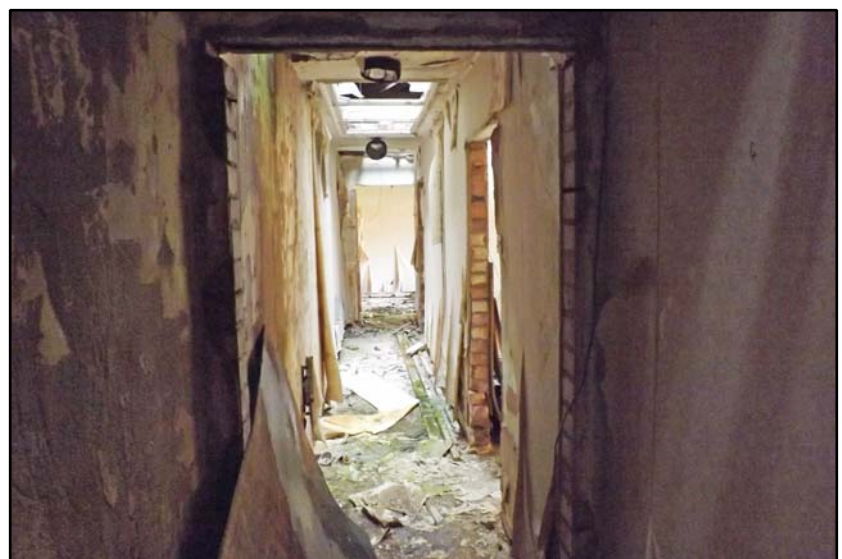
View of the first floor, looking north Fig 5.1.18



The 1950's extension to the rear of the Mews Fig 5.1.19



Interior of the 1950's extension, showing its poor condition Fig 5.1.20



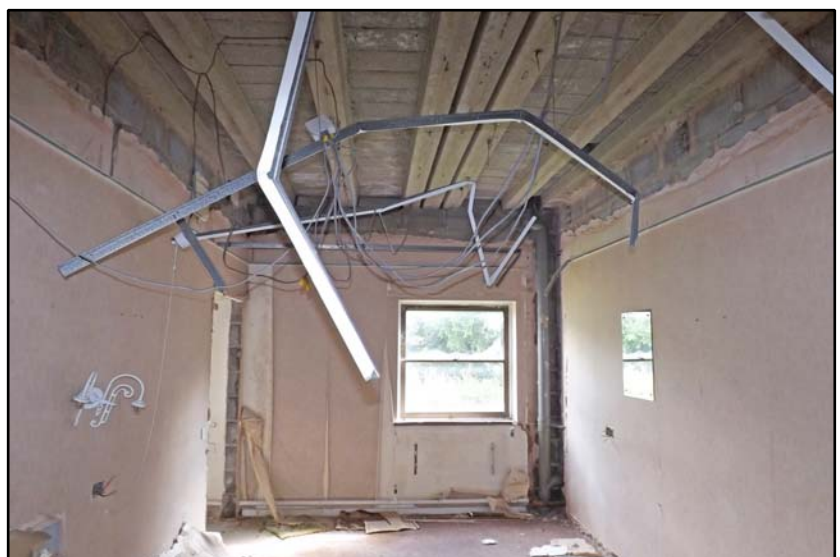
Interior of the 1950's extension Fig 5.1.21



The 1980's extensions as viewed from the garden Fig 5.1.22



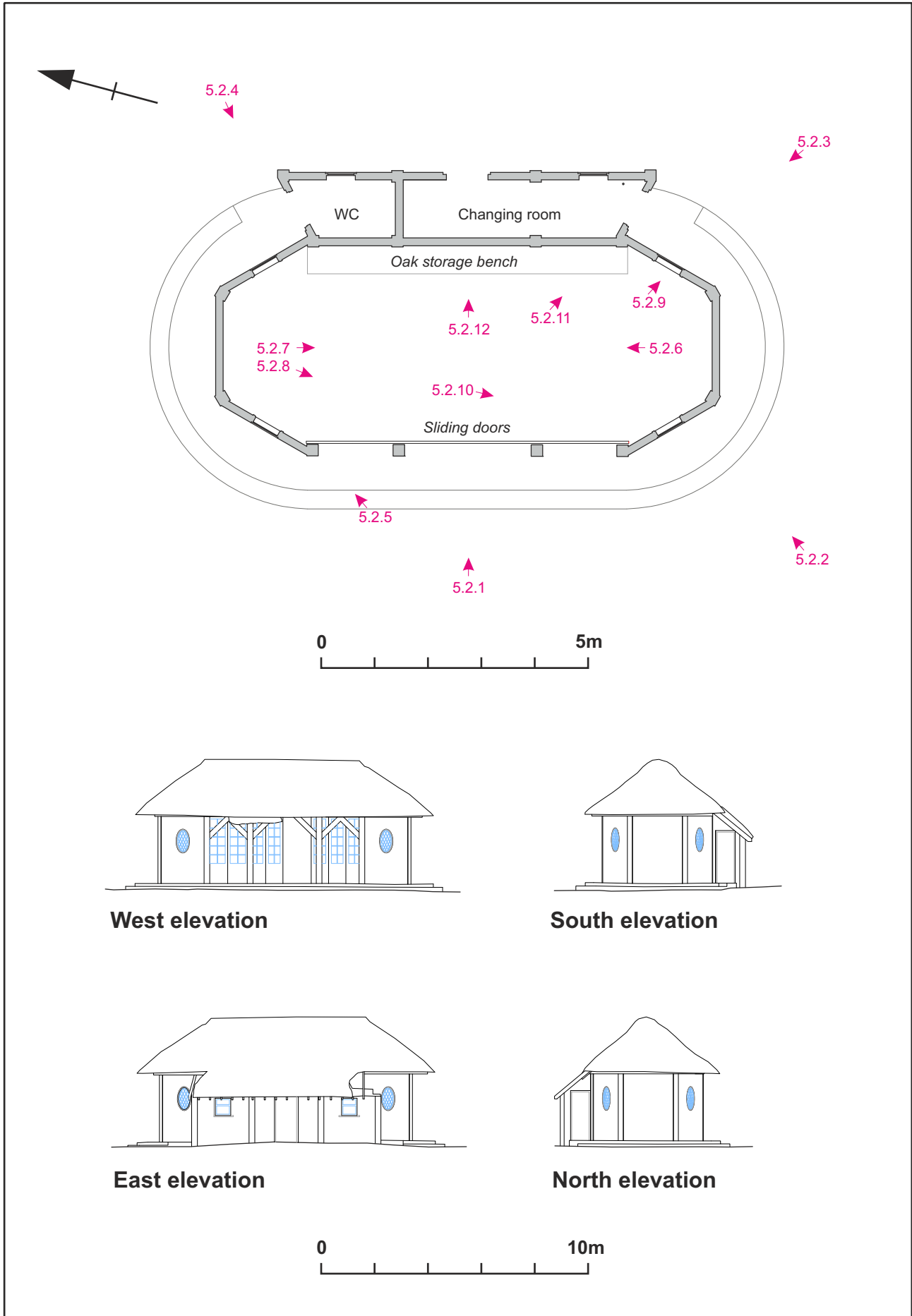
The central corridor of the 1980's extension Fig 5.1.23



Example of the rooms within the 1980's extensions Fig 5.1.24

5.2 Tennis Pavilion

Figs 5.2.1 - 5.2.12



Scales 1:100 & 1:200

Plan and elevations of the tennis pavilion showing photograph locations Fig 5.2



The main, west elevation of the tennis pavilion Fig 5.2.1



The south elevation of the tennis pavilion Fig 5.2.2



The south elevation of the tennis pavilion Fig 5.2.3



The north elevation with entrance to the rear toilet Fig 5.2.4



Detail of the eaves Fig 5.2.5



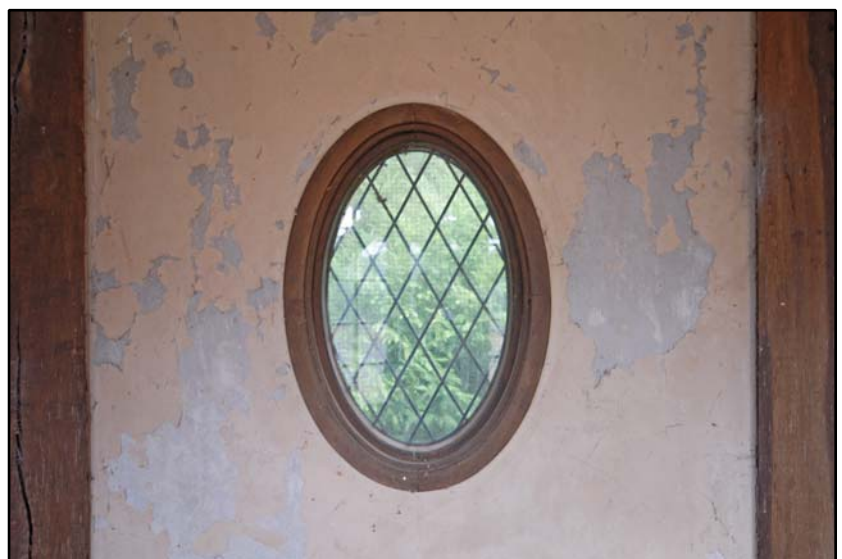
Interior of the pavilion, looking north Fig 5.2.6



Interior of the pavilion, looking south Fig 5.2.7



Detail of the sliding doors Fig 5.2.8



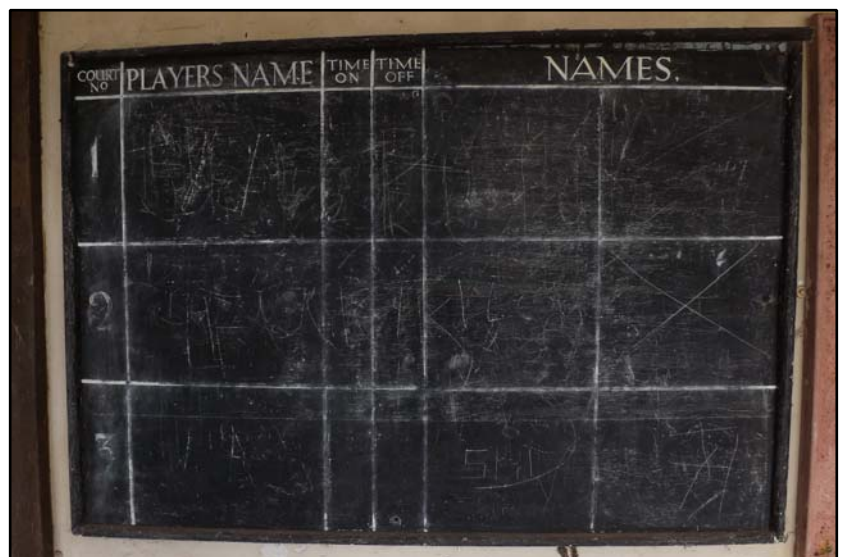
Detail of the windows Fig 5.2.9



Detail of the brick, herringbone pattern floor Fig 5.2.10



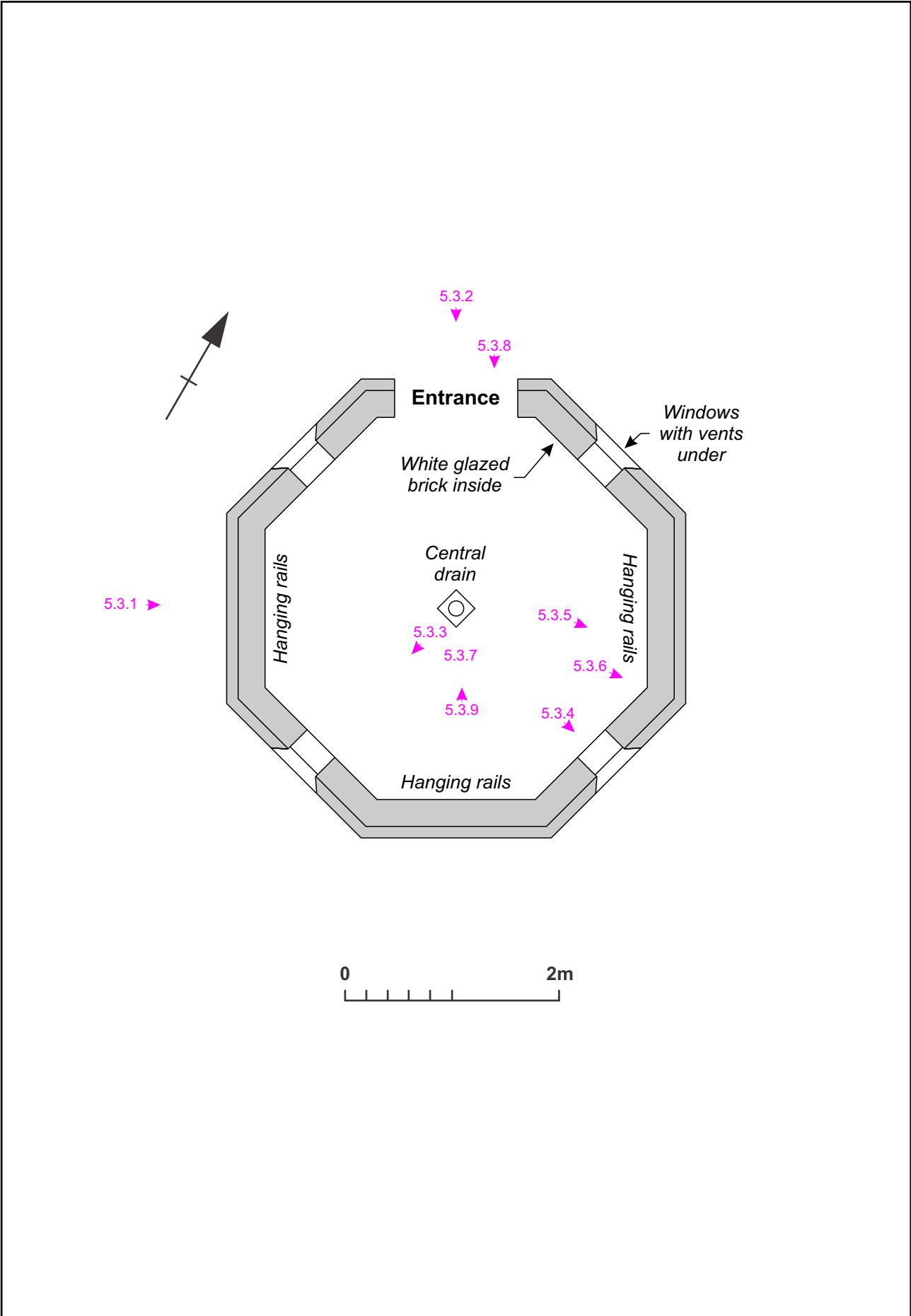
Detail of the oak storage benches Fig 5.2.11



Detail of the scoreboard Fig 5.2.12

5.3 Game House

Figs 5.3.1 - 5.3.9



Scale 1:50

Plan of the game house, showing photograph locations Fig 5.3



The south-west elevation, looking north-east Fig 5.3.1



The north-west elevation, looking south-east Fig 5.3.2



The interior, looking north-east Fig 5.3.3



Detail of the windows and hanging rails Fig 5.3.4



Detail of the hanging rail brackets Fig 5.3.5



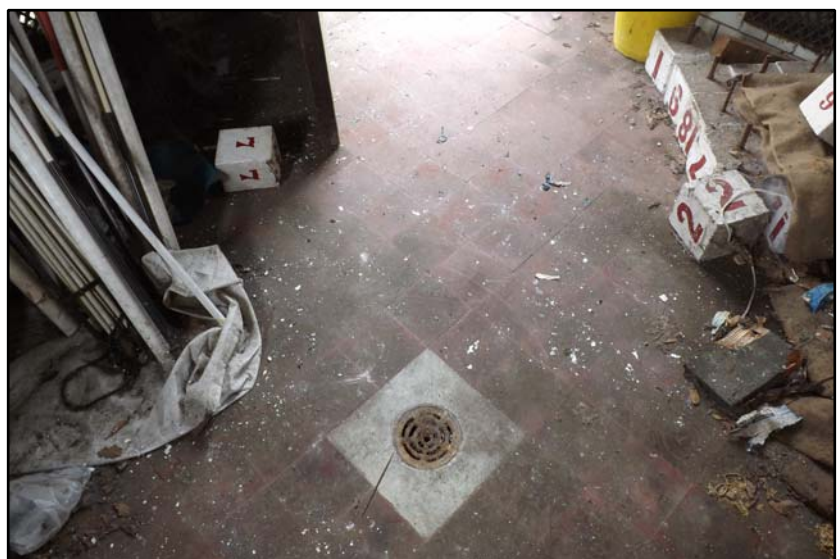
Detail of the shelf brackets Fig 5.3.6



The ceiling hanging rails Fig 5.3.7



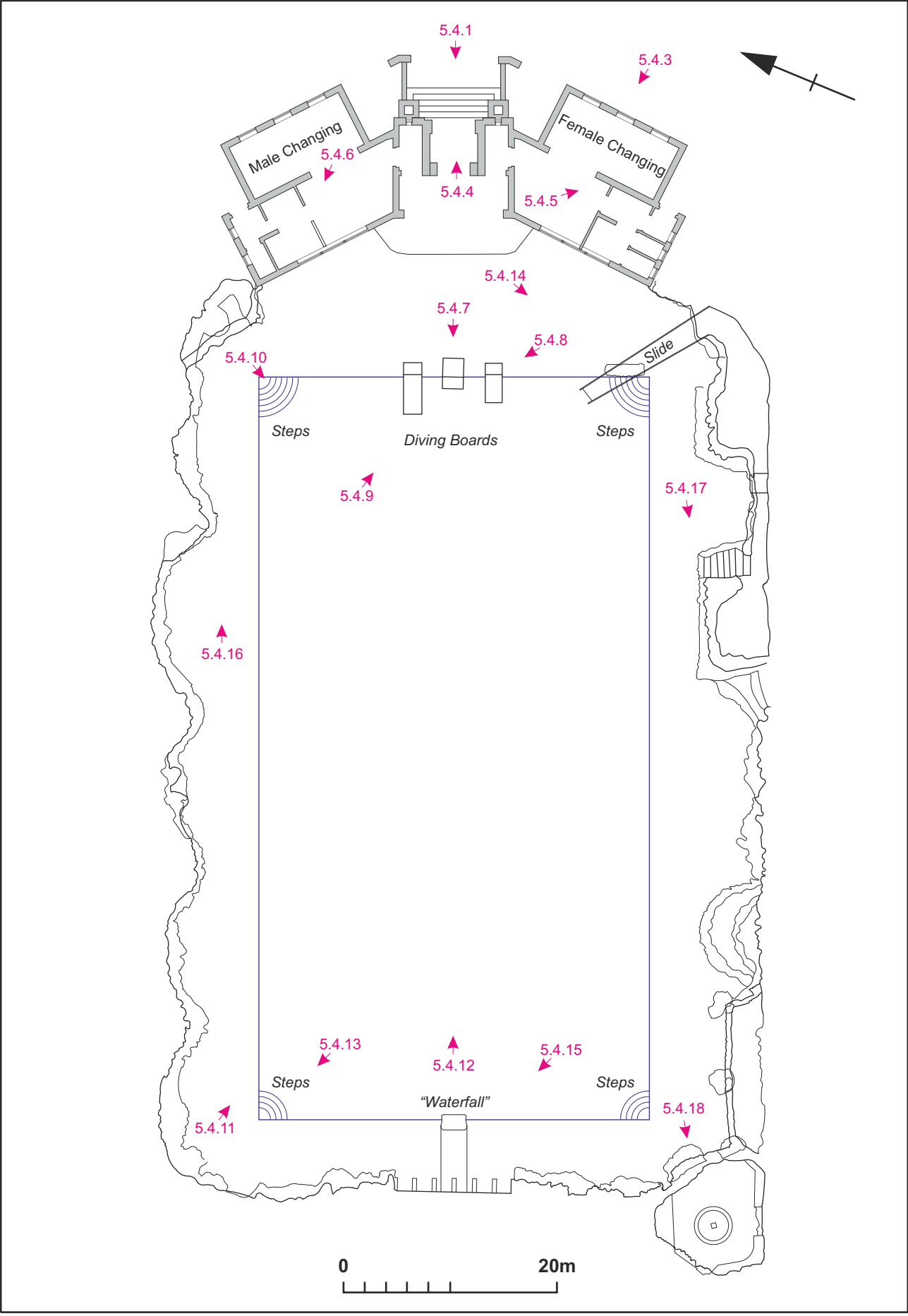
Detail of the door furniture Fig 5.3.8



Detail of the game house floor Fig 5.3.9

5.4 Lido

Figs 5.4.1 - 5.4.18



Scale 1:500

Plan of the Lido, showing photograph locations Fig 5.4



The main frontage of the Lido, looking south-west Fig 5.4.1



The north-east elevation Fig 5.4.2



The south-east elevation Fig 5.4.3



Interior view of the original entrance doors Fig 5.4.4



The female changing rooms Fig 5.4.5



The male changing rooms Fig 5.4.6



The concrete diving boards, looking south-west Fig 5.4.7



The concrete diving boards, looking north-west Fig 5.4.8



The underside of the diving boards Fig 5.4.9



General view of the swimming pool, looking south-west Fig 5.4.10



View of the swimming pool, looking west Fig 5.4.11



View of the swimming pool, looking north-east Fig 5.4.12



Concentric steps in the western shallow end of the pool Fig 5.4.13



Water slide adjacent to the female changing rooms Fig 5.4.14



The concrete waterfall at the west end of the pool Fig 5.4.15



Stone grottos at the northern edge of the pool Fig 5.4.16



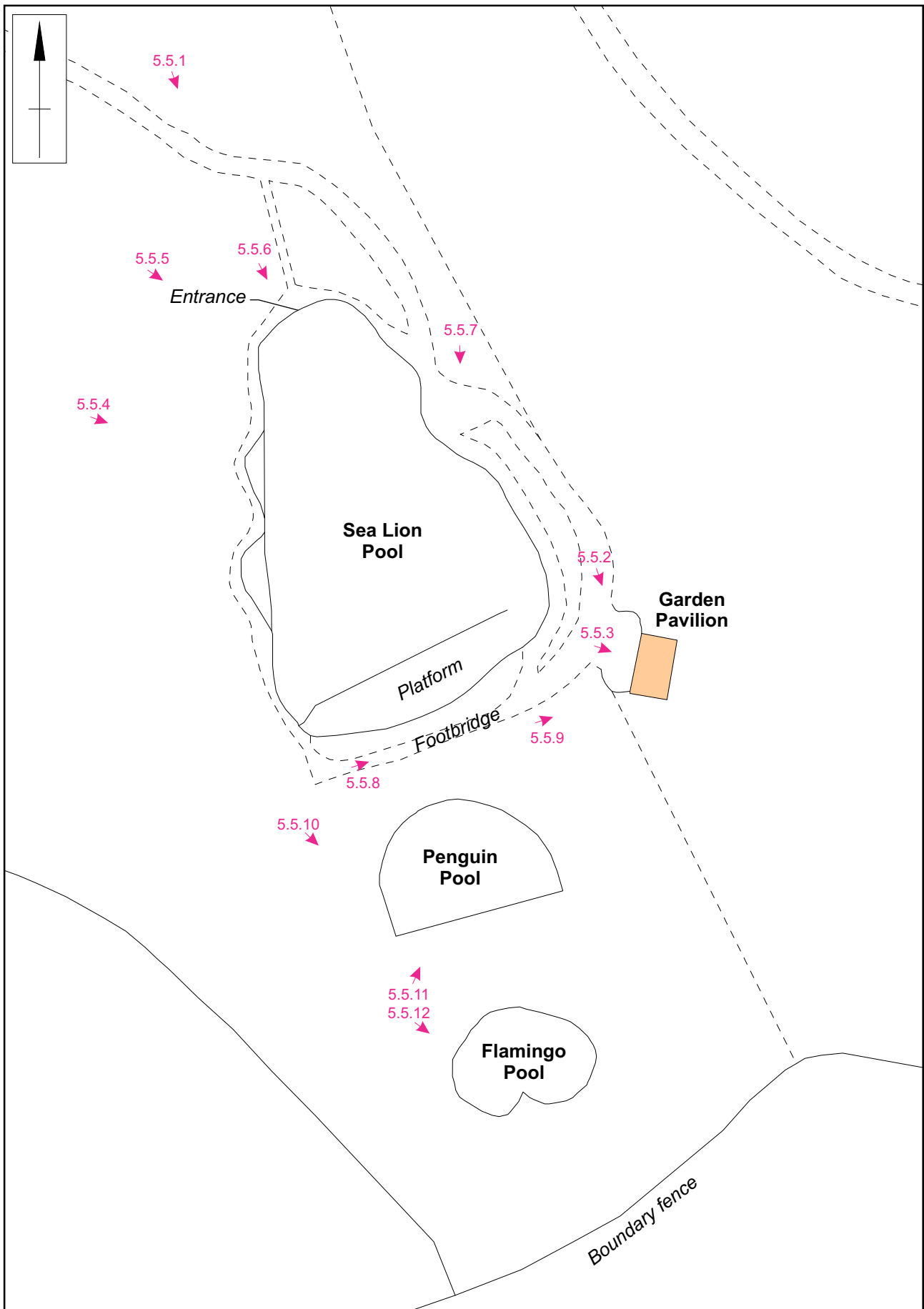
Stone grottos at the southern edge of the pool Fig 5.4.17



Interior of the western grotto Fig 5.4.18

5.5 Garden Pavilion and Pools

Figs 5.5.1 - 5.5.12



Scale 1:500

Plan of the Garden Pavilion and Pools, showing photograph locations

Fig 5.5



View of the pools and grotto within the wider landscape Fig 5.5.1



The Grotto, looking south-east Fig 5.5.2



The main facade of the Grotto, looking east Fig 5.5.3



The sea lion pool, looking south-east Fig 5.5.4



General view of the sea lion pool, looking south Fig 5.5.5



The sea lion pool entrance Fig 5.5.6



The sea lion pool, looking south-west Fig 5.5.7



The footbridge south of the sea lion pool Fig 5.5.8



18th century, decorative urn Fig 5.5.9



View of the overgrown penguin and flamingo pools Fig 5.5.10



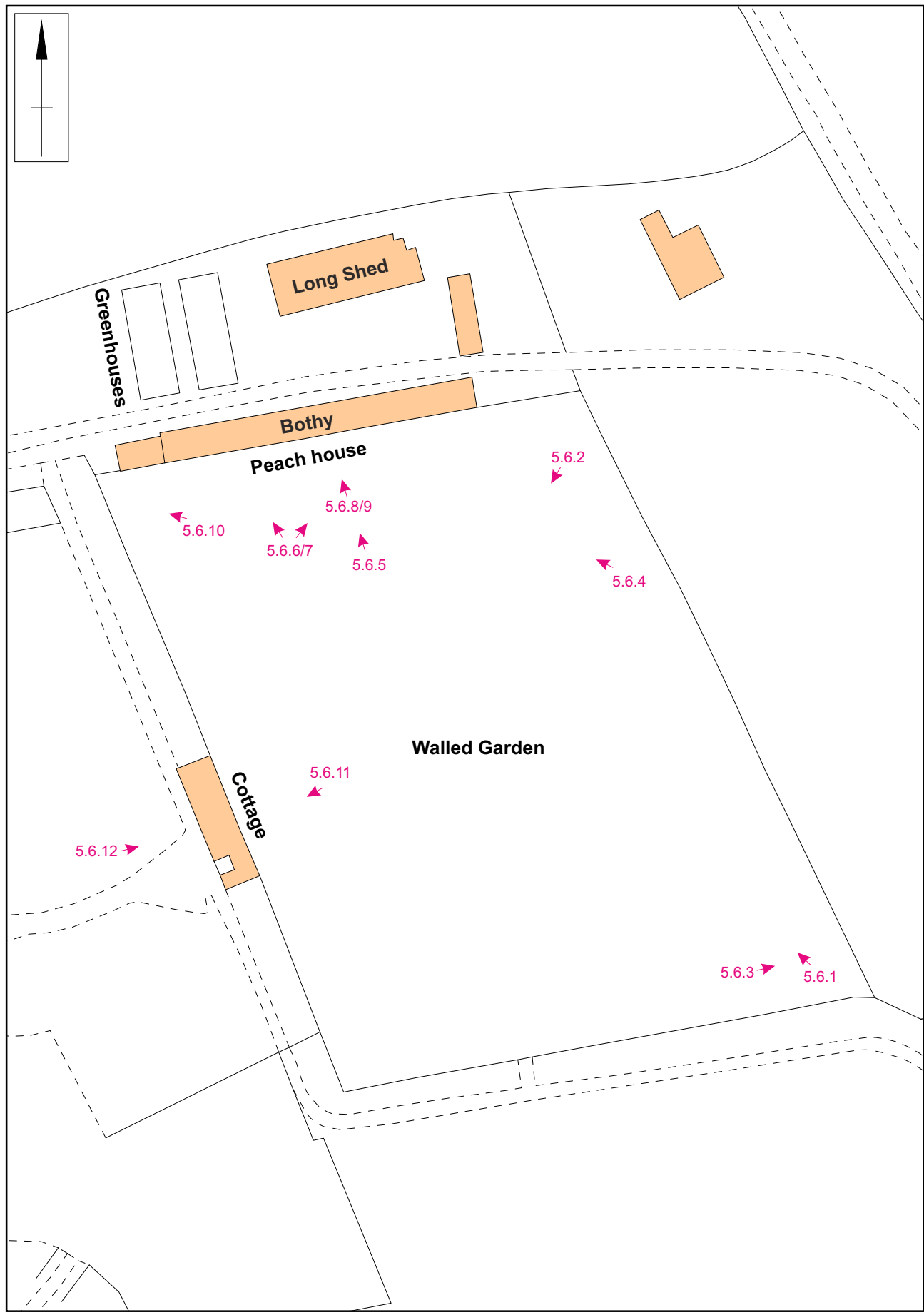
The overgrown penguin pool Fig 5.5.11



The flamingo pool, looking south-east Fig 5.5.12

5.6 Walled Garden and Peach House

Figs 5.6.1 - 5.6.12



Scale 1:750

Plan of the walled garden, showing photograph locations 5.6



General view of the walled garden, looking north-west Fig 5.6.1



General view of the walled garden, looking south-west Fig 5.6.2



Side entrance in the south-east corner of the garden Fig 5.6.3



The peach house looking north Fig 5.6.4



The former peach house to the rear of the bothy Fig 5.6.5



The former peach house, looking north-west Fig 5.6.6



The peach house, looking north-east Fig 5.6.7



Remnant mechanism of the peach house Fig 5.6.8



The door from the bothy to the peach house Fig 5.6.9



Entrance to the garden, adjacent to the peach house Fig 5.6.10



The 19th century cottage, looking west Fig 5.6.11



The west elevation of the cottage, looking east Fig 5.6.12

5.7 Bothy

Figs 5.7.1 - 5.7.21



Scale 1:125

Plans and elevation of the Bothy, showing photograph locations Fig 5.7



The north elevation of the Bothy, looking south-west Fig 5.7.1



The central facade of the Bothy, looking south Fig 5.7.2



Detail of the main, central door to the Bothy Fig 5.7.3



Detail of the central clock Fig 5.7.4



The eastern shed Fig 5.7.5



The eastern shed, looking west Fig 5.7.6



The western extension Fig 5.7.7



Interior of the western extension Fig 5.7.8



Entrance hall of the Bothy with door to the Peach House Fig 5.7.9



General view of the potting shed, looking east Fig 5.7.10



Interior of the potting shed, looking west Fig 5.7.11



Detail of ground floor window with wooden sliding shutters Fig 5.7.12



First floor head gardeners' kitchen, looking east Fig 5.7.13



Detail of the kitchen range Fig 5.7.14



First floor head gardeners' kitchen, looking west Fig 5.7.15



First floor room, looking north Fig 5.7.16



First floor room, looking west Fig 5.7.17



Detail of window at first floor Fig 5.7.18



Light wells and former stair to Bothy cellar Fig 5.7.19



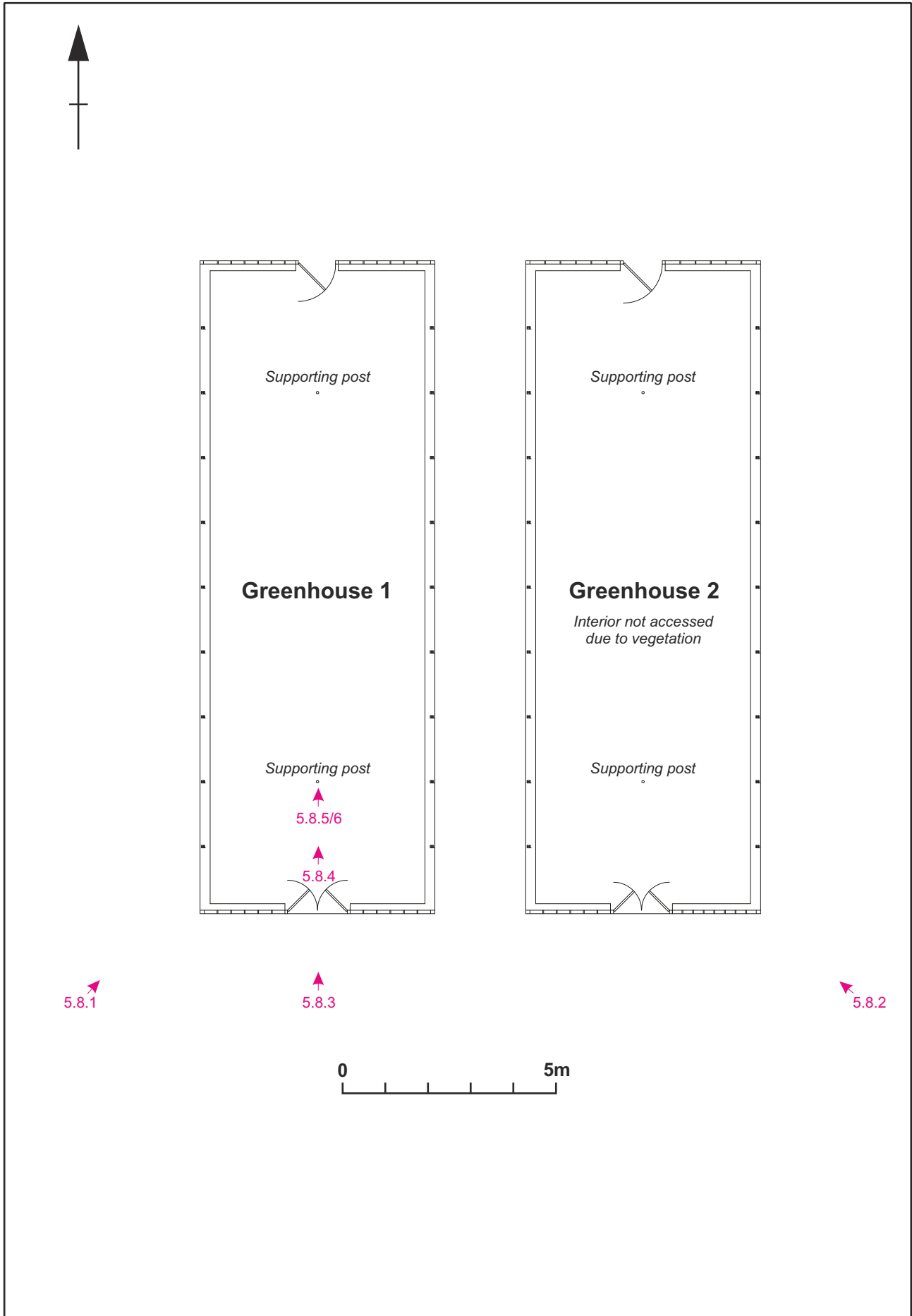
The Bothy cellar, looking east Fig 5.7.20



The Bothy cellar, looking west Fig 5.7.21

5.8 Greenhouses

Figs 5.8.1 - 5.8.6



Scale 1:125

Plan of the greenhouses, showing photograph locations Fig 5.8



Greenhouse 1, looking north-east Fig 5.8.1



Greenhouse 2, looking north-west Fig 5.8.2



The south elevation of Greenhouse 1 Fig 5.8.3



The interior of Greenhouse 1 Fig 5.8.4



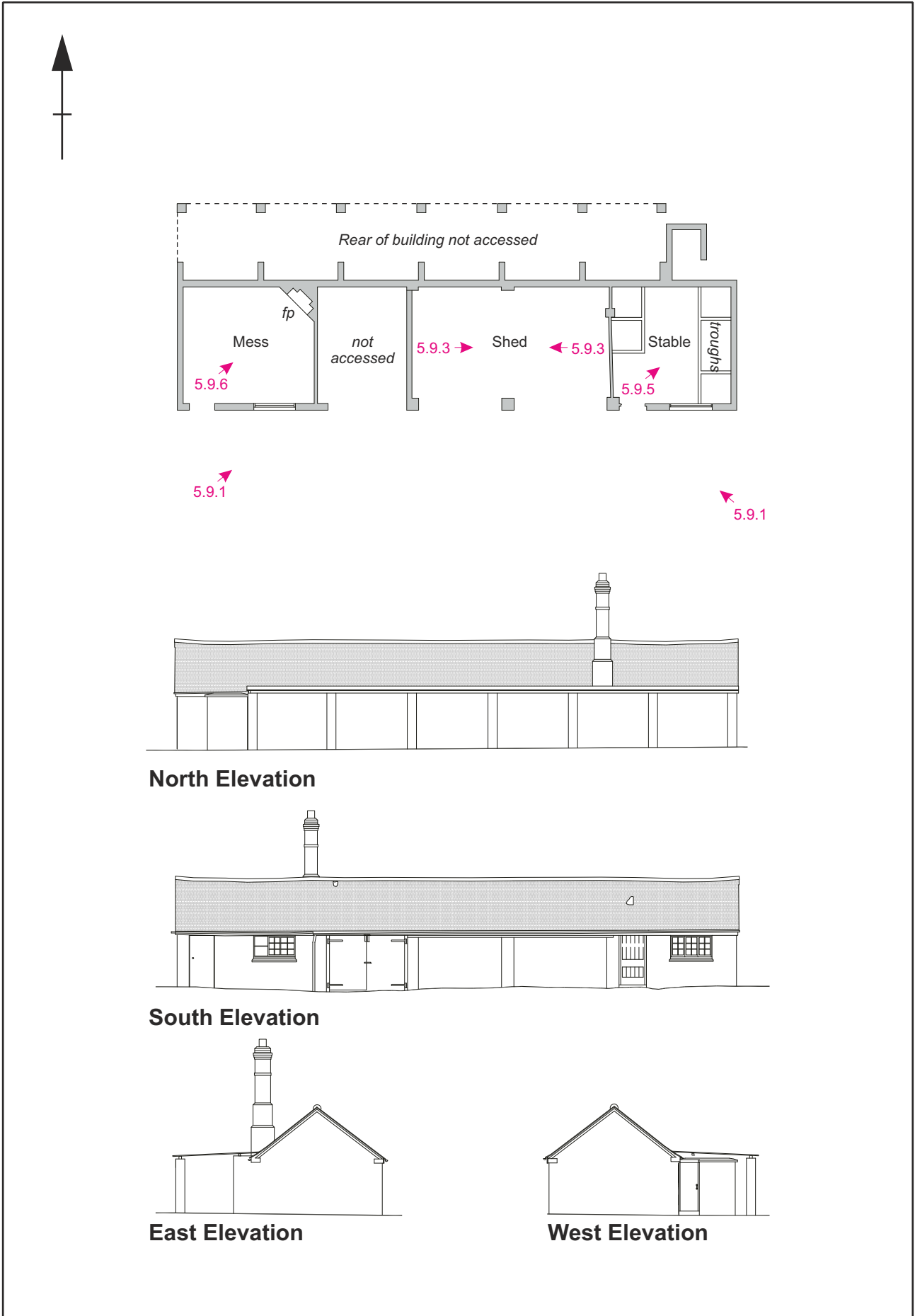
Detail of winding mechanism Fig 5.8.5



Detail of the roof structure Fig 5.8.6

5.9 Long Shed

Figs 5.9.1 - 5.9.6



Scale 1:200

Plan and elevations of the Long Shed, showing photograph locations

Fig 5.9



The Long Shed, looking north-west Fig 5.9.1



The Long Shed, looking north-west with the remains of a former greenhouse in the foreground Fig 5.9.2



The central shed, looking west Fig 5.9.3



The central shed, looking east Fig 5.9.4



The stable, showing feeding troughs Fig 5.9.5



The mess, with fireplace and cast iron wood burner Fig 5.9.6



MOLA
Bolton House
Wootton Hall Park
Northampton
NN4 8BN
01604 700 493
www.mola.org.uk
sparry@mola.org.uk