



A Programme of Archaeological Observation Investigation and Recording on land at 2 - 4 Hayes Road, Deanshanger Northamptonshire

Report No. 14/259

Authors: Gemma Hewitt and David J Leigh

Illustrator: Amir Bassir



**A Programme of Archaeological Observation,
Investigation and Recording on land at
2 - 4 Hayes Road, Deanshanger
Northamptonshire
April 2014**

Report No. 14/259

Quality control and sign off:

| Issue No. | Date approved: | Checked by: | Verified by: | Approved by: | Reason for Issue: |
|------------------|-----------------------|--------------------|---------------------|---------------------|--------------------------|
| 1 | 18/12/14 | Pat Chapman | Anthony Maull | Andy Chapman | Draft review |

Authors: Gemma Hewitt and David J Leigh

Illustrator: Amir Bassir

©MOLA (Northampton) 2014

MOLA
Bolton House
Wootton Hall Park
Northampton
NN4 8BN
01604 700 493
www.mola.org.uk
business@mola.org.uk

STAFF

Project Manager Anthony Maull Cert Arch
supported by David J Leigh BA

Text Gemma Hewitt BA and David J Leigh

Fieldwork Gemma Hewitt
Simon Markus BA

Illustrations Amir Bassir BSc Carol Holmes BA PCiFA

Project Archive Theodora Anastasiadou BA MA (Bham)
MA (York)

OASIS REPORT FORM

| PROJECT DETAILS | | OASIS No:molanort1-198422 | |
|---------------------------|--|---|--|
| Project name | A programme of archaeological observation, investigation and recording on land at 2-4 Haynes Road, Deanshanger, Northamptonshire. | | |
| Short description | A programme of archaeological observation, investigation and recording was undertaken by MOLA on behalf of Connolly Homes, in April 2014, during groundworks associated with a new residential development on land at 2-4 Hayes Road, Deanshanger. No archaeological features or artefacts were present. | | |
| Project type | A Programme of Archaeological Observation, Investigation and Recording | | |
| Site status | None | | |
| Previous work | None | | |
| Current Land use | Domestic dwelling and associated garden | | |
| Future work | No | | |
| Monument type/ period | | | |
| Significant finds | | | |
| PROJECT LOCATION | | | |
| County | Northamptonshire | | |
| Site address | 2-4 Haynes Road, Deanshanger, Northampton | | |
| Study area (sq) | 400m | | |
| OS Easting & Northing | SP 76694 39759 | | |
| PROJECT CREATORS | | | |
| Organisation | MOLA (Northampton) | | |
| Project brief originator | The Assistant Archaeological Advisor, NCC | | |
| Project Design originator | Northamptonshire Archaeology | | |
| Director/Supervisor | Simon Markus | | |
| Project Manager | Anthony Maul | | |
| Sponsor or funding body | Connolly Homes | | |
| PROJECT DATE | | | |
| Start date | April 2014 | | |
| End date | April 2014 | | |
| ARCHIVES | Location | Content (eg pottery, animal bone etc) | |
| Physical | | | |
| Paper | MOLA Northampton | Watching brief forms (4) Photographic record sheets (2) Context sheets (4) Digital photographs (49) | |
| Digital | | Report text and figures | |
| BIBLIOGRAPHY | Journal/monograph, published or forthcoming, or unpublished client report | | |
| Title | A programme of archaeological observation, investigation and recording on land at 2-4 Haynes Road, Deanshanger, Northamptonshire. April 2014 | | |
| Serial title & volume | MOLA Northampton 14/259 | | |
| Authors | Gemma Hewitt and David J Leigh | | |
| Date | December 2014 | | |

Contents

| | |
|------------|-----------------------------------|
| 1 | INTRODUCTION |
| 2 | BACKGROUND |
| 2.1 | Location and topography |
| 2.2 | Historical background |
| 3 | OBJECTIVES AND METHODOLOGY |
| 4 | THE RECORDED EVIDENCE |
| 5 | THE SITE ARCHIVE |
| 6 | CONCLUSIONS |
| | BIBLIOGRAPHY |

Figures

Cover: The investigation area

Fig 1: Site location

Fig 2: The area of archaeological investigation

Fig 3: The existing dwelling, looking west

Fig 4: The groundworks in progress

Fig 5: Balancing pond 1

Fig 6: The stratigraphy in test pit 1

**A Programme of Archaeological
Observation, Investigation and Recording
on land at 2-4 Hayes Road, Deanshanger,
Northamptonshire
April 2014**

Abstract

A programme of archaeological observation, investigation and recording was undertaken by MOLA Northampton on behalf of Connolly Homes, during April 2014, during groundworks associated with a new residential development on land at 2-4 Haynes Road, Deanshanger. No archaeological features or artefacts were present.

1 INTRODUCTION

A programme of archaeological observation, investigation and recording was undertaken by MOLA Northampton on behalf of Connolly Homes in April 2014 during groundworks associated with a new residential development on land at 2-4 Haynes Road, Deanshanger, Northampton (NGR SP76694 39759; Figs 1, 2 and 3).

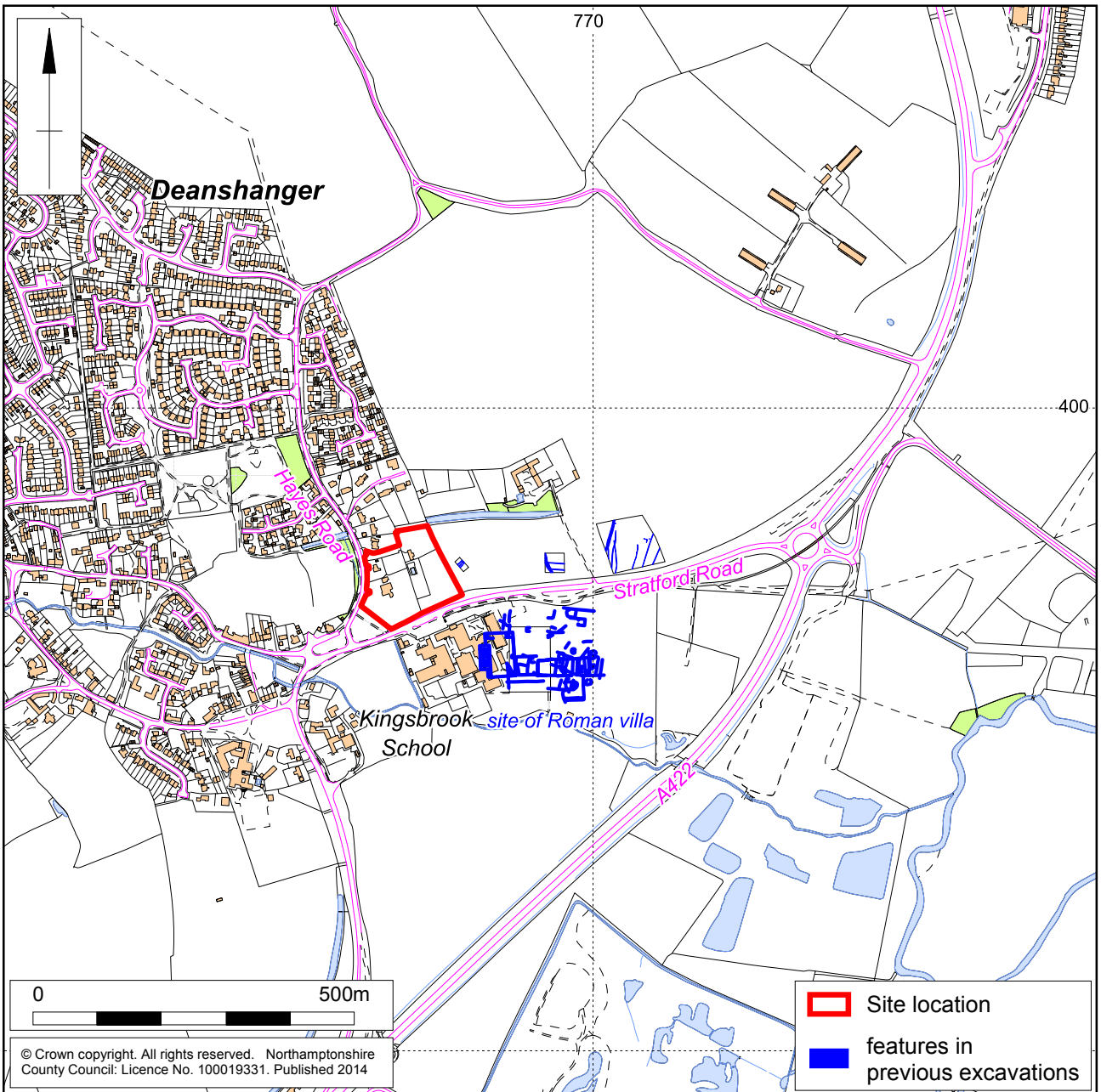
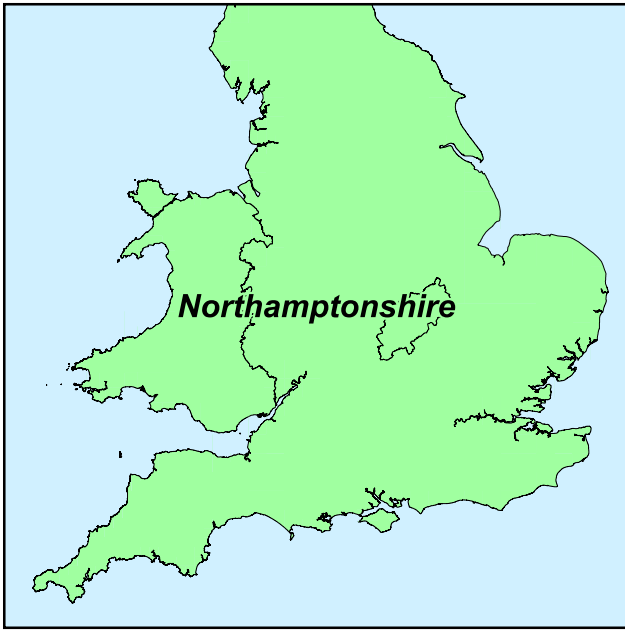
It adhered to the National Planning Policy Framework (DCLG 2012) and followed a Written Scheme of Investigation produced by Northamptonshire Archaeology (Leigh 2013) and the procedural document MoRPHE issued by English Heritage (EH 2006) along with the appropriate national standards and guidelines, as recommended by the Institute for Archaeologists (IfA 2008).

2 BACKGROUND

2.1 Location and topography

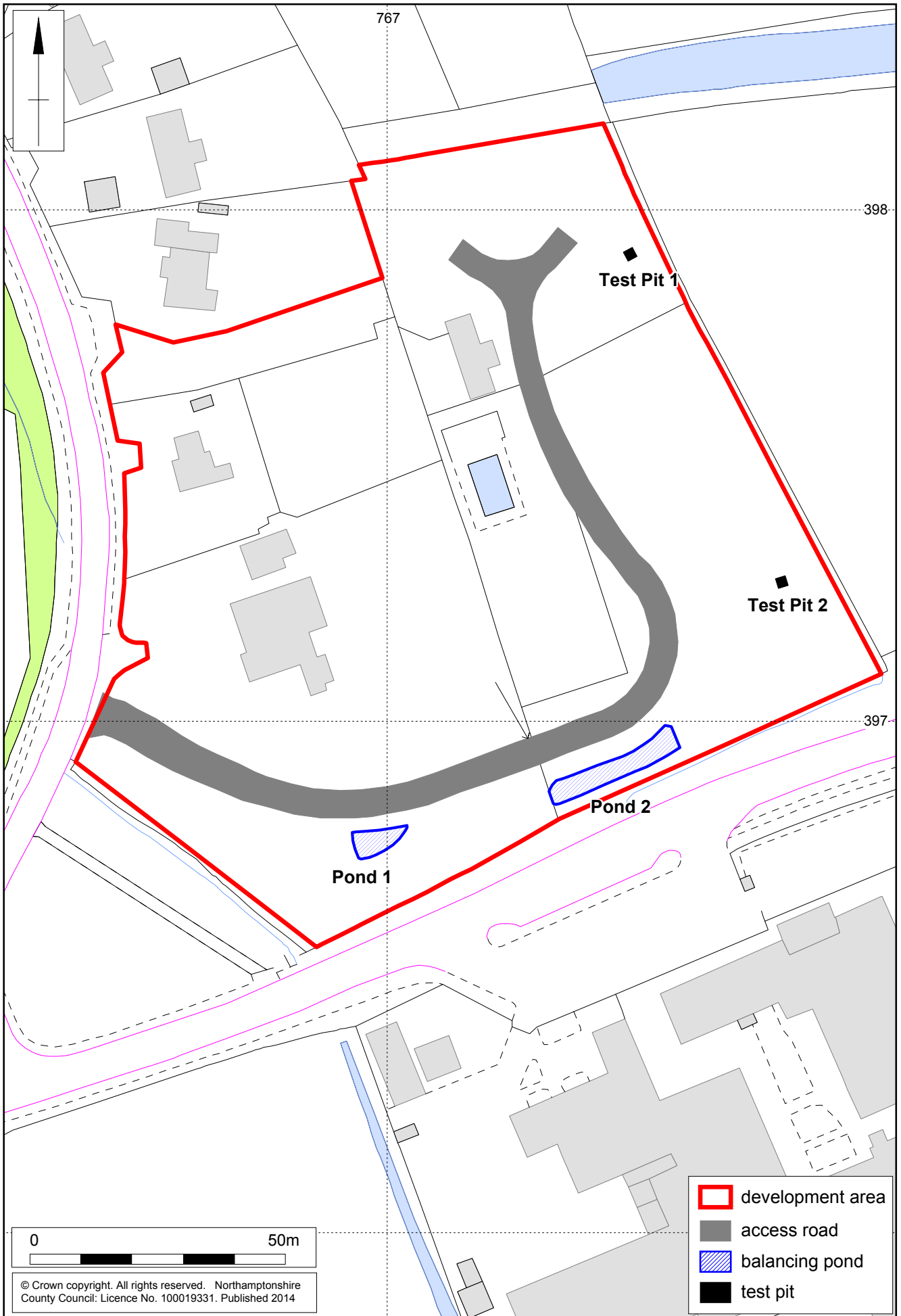
The site lies approximately 25km to the south of Northampton. The development area lies at the southern end of Hayes Road on its eastern side.

The underlying geology has been mapped by the British Geological Survey as comprising Lower Jurassic Lias Group and Middle Jurassic Great Oolite Group (BGS Geindex <http://www.bgs.ac.uk/geoindex>).



Scale 1:10,000

Site location Fig 1



1:1,000

Test pit locations and areas of archaeological observations Fig 2

2.2 Historical background

The site lies on the southern edge of the village and within an area of archaeological interest.

Close by to the south is Kingsbrook School which lies on the site of a Roman villa and settlement which was identified in 1957. The site was subject to excavation which indicated that the site was occupied from the 1st – mid 4th centuries AD. Archaeological investigations in 2012 to the east recorded a trackway and ditches of 1st and 2nd century date, along with remnants of medieval ridge and furrow (Clarke 2012). It is likely that several of these features continue into the investigation area.

The Parish Church of Holy Trinity, which was built in 1853, lies close by to the south-west of the site.

No previous archaeological work is recorded as having been carried out within the site. Up to the present application the site has comprised the site of a private dwelling (Figs 2 and 3) with swimming pool and extensive outbuildings and stables

3 OBJECTIVES AND METHODOLOGY

The aims of the archaeological investigation were to:

- ◆ Observe the groundworks for the new residential development and any associated groundworks, and to record all archaeological deposits uncovered;
- ◆ Determine the date, character, state of preservation and depth of any archaeological deposits observed and to retrieve all datable artefacts;
- ◆ Create a permanent archive and record of the archaeological information collected during the course of the fieldwork and analysis.

A photographic record in both black and white negative film was kept along with photographs in digital format. The written record used MOLA pro-forma sheets. The watching brief was carried out in accordance with the *Standard and guidance for an archaeological watching brief* (IfA 2008).

The fieldwork was undertaken in April 2014 during groundworks for the new residential development. Due to a high water table across the investigation area and with the agreement of the Archaeological Advisor, archaeological investigation comprised observation during the excavation of two new balancing ponds and two test pits. The groundworks were carried out using a 360° mechanical excavator (Fig 4) fitted with a toothless grading bucket.

The new balancing ponds (Figs 2 and 5) were located along the southern boundary of the site close to the Stratford Road boundary, whilst the two test pits were positioned in the western half of the site. The test pits measured 2m square, and were excavated to a maximum depth of 0.80m (Figs 2 and 6).



The existing dwelling, looking west Fig 3



The groundworks in progress Fig 4

4 THE RECORDED EVIDENCE

An examination of the stratigraphic sequence within the two balancing ponds and the test pits revealed a consistent stratigraphic sequence throughout the investigation area.

The natural substratum was encountered approximately 0.55m below present ground level and comprised orange-yellow clay. This was overlain by mid to dark brown subsoil, comprising sandy loam, up to 0.35m thick, containing occasional irregular stones.

This in turn was sealed by mid grey-brown sandy loam, up to 0.20m thick containing occasional irregular stones.

No archaeological deposits or artefacts were present within the areas of investigation.



Balancing pond 1 Fig 5

5 THE SITE ARCHIVE

The project has generated a small archive comprising:

| RECORD | NUMBER |
|----------------------------|--------|
| Watching brief forms | 4 |
| Photographic record sheets | 2 |
| Context sheets | 4 |
| Digital photographs | 49 |

The project archive will be consolidated and prepared for deposition. There is currently no appointed archive store for Northamptonshire, until such time as one has been identified, the project archive will be held with MOLA Northampton



The stratigraphy in test pit 1 Fig 6

6 CONCLUSIONS

A particularly high water table made conditions for archaeological observation extremely difficult and as a result limited observations were carried out.

No archaeological deposits were present in those areas observed, although it cannot be stated that no archaeological deposits are present within the investigation area, the absence of any archaeological artefacts suggests that no significant archaeological deposits are located in the immediate area of the development site.

BIBLIOGRAPHY

BGS 2009 <http://www.bgs.ac.uk/geoindex/home.html> British Geological Survey website

Clarke, J 2012 *Archaeological Excavations on land north of Stratford Road, Deanshanger, Northamptonshire*, Northamptonshire Archaeology report **12/12**

DCLG 2012 *National Planning Policy Framework*, Department for Communities and Local Government

EH 2006 *Management of Research Projects in the Historic Environment*, English Heritage procedural document

IfA 2008 *Standard and guidance for an archaeological watching brief*, Institute for Archaeologists

Leigh, D J 2013 *Written Scheme of Investigation for a Programme of Archaeological Observation, Investigation, Recording, analysis and Publication of Works on land at 2-4 Hayes Road, Deanshanger, Northamptonshire*, Northamptonshire Archaeology

MOLA 2014 *Archaeological Fieldwork Manual*, MOLA



MOLA
Bolton House
Wootton Hall Park
Northampton
NN4 8BN
01604 700 493
www.mola.org.uk
business@mola.org.uk