



**Archaeological trial trench evaluation on
land at Theedhams Farm, Steeple Road,
Southminster, Essex
February - March 2018**

Report No. 18/33

Author: Alex Shipley

Illustrator: Olly Dindol



© MOLA Northampton
Project Manager: Jim Brown
Site Code: TBC
NGR: TQ94809 99942

MOLA
Kent House
30 Billing Road
Northampton
NN1 5DQ 01604 809 800
www.mola.org.uk
sparry@mola.org.uk

**Archaeological trial trench evaluation on
land at Theedhams Farm, Steeple Road,
Southminster, Essex
February - March 2018**

Report No. 18/33

Quality control and sign off:

Issue No.	Date approved:	Checked by:	Verified by:	Approved by:	Reason for Issue:
1	16/03/2018	C Chinnock	C Finn	J Brown	Draft for client review

Author: Alex Shipley BSc
Illustrator: Ollly Dindol BSc

© MOLA Northampton 2018

MOLA
Kent House
30 Billing Road
Northampton
NN1 5DQ
01604 809800

www.mola.org.uk
sparry@mola.org.uk

STAFF

Project Manager: Jim Brown BSc PGDip MCIfA

Text: Alex Shipley BSc

Fieldwork Simona Falanga MA
Rob Pearce MA

Clay tobacco-pipe: Tora Hylton

Illustrations Olly Dindol BSc

OASIS REPORT FORM

PROJECT DETAILS		OASIS molanort1-311713	
Project title	Archaeological trial trench evaluation on Land at TheedHams Farm, Steeple Road, Southminster, Essex, February to March 2018		
Short description	MOLA (Museum of London Archaeology) was commissioned by Archaeology Collective on behalf of David Wilson Homes to undertake an archaeological trial trench evaluation on Land at Theedhams Farm, Steeple Road Southminster, Essex. Forty 30m long trenches across the development area. Post-medieval field ditches and a single furrow were recorded but no other archaeological features or finds were observed.		
Project type	Trial trench evaluation		
Previous work	None		
Current land use	Agricultural		
Future work	Unknown		
Monument type and period	Post-medieval ditches		
Significant finds	Clay tobacco pipe		
PROJECT LOCATION			
County	Essex		
Site address	Land at Theedhams Farm, Steeple Road, Southminster		
Easting Northing	TQ 94809 99942		
Area (sq m/ha)	5.5ha		
Height aOD	16-20m aOD		
PROJECT CREATORS			
Organisation	MOLA Northampton		
Project brief originator	Teresa O'Connor, Essex County Council Historic Environment Advisor		
Project Design originator	MOLA Northampton		
Project Supervisor	Alex Shipley, MOLA		
Director/Manager	Jim Brown, MOLA		
Sponsor or funding body	Archaeology Collective on behalf of David Wilson Homes		
PROJECT DATE			
Start date	26.02.2018		
End date	12.03.2018		
ARCHIVES	Location (Accession no.)	Contents	
Physical	Essex Museums - Accession Code: TBC	Clay tobacco pipe	
Paper		Site archive, context sheets and permatrace	
Digital		Client report PDF, Survey Data, Photographs	
BIBLIOGRAPHY			
Title	Archaeological trial trench evaluation on Theedhams Farm, Steeple Road, Southminster, Essex, February to March 2018		
Serial title & volume	MOLA Northampton Report 18/33		
Author(s)	Alex Shipley		
Page numbers	24		
Date	19 March 2018		

Contents

- 1 INTRODUCTION
- 2 AIMS AND OBJECTIVES
- 3 BACKGROUND
 - 3.1 Location, topography and geology
 - 3.2 Historical and archaeological background
- 4 EXCAVATION METHODOLOGY
- 5 THE EXCAVATED EVIDENCE
- 6 CLAY TOBACCO-PIPE by Tora Hylton
- 7 DISCUSSION

BIBLIOGRAPHY

APPENDIX: CONTEXT INDEX

Tables

Table 1: Quantification of post-medieval pottery

Figures

Front cover: Site shot of snowy conditions
Fig 1: Site location and excavated trenches
Fig 2: 1897 OS 1:2500 County Series map with excavated features shown
Fig 3: Post-medieval ditch [207], looking south
Fig 4: Furrow [405], looking north
Fig 5: Post-medieval ditch [1105], looking north
Fig 6: Post-medieval ditch [3705], with land drain on its northern edge, looking east
Back cover: Trench 18 being back filled looking north

**Archaeological trial trench evaluation on
Theedhams Farm, Steeple Road,
Southminster, Essex
February to March 2018**

Abstract

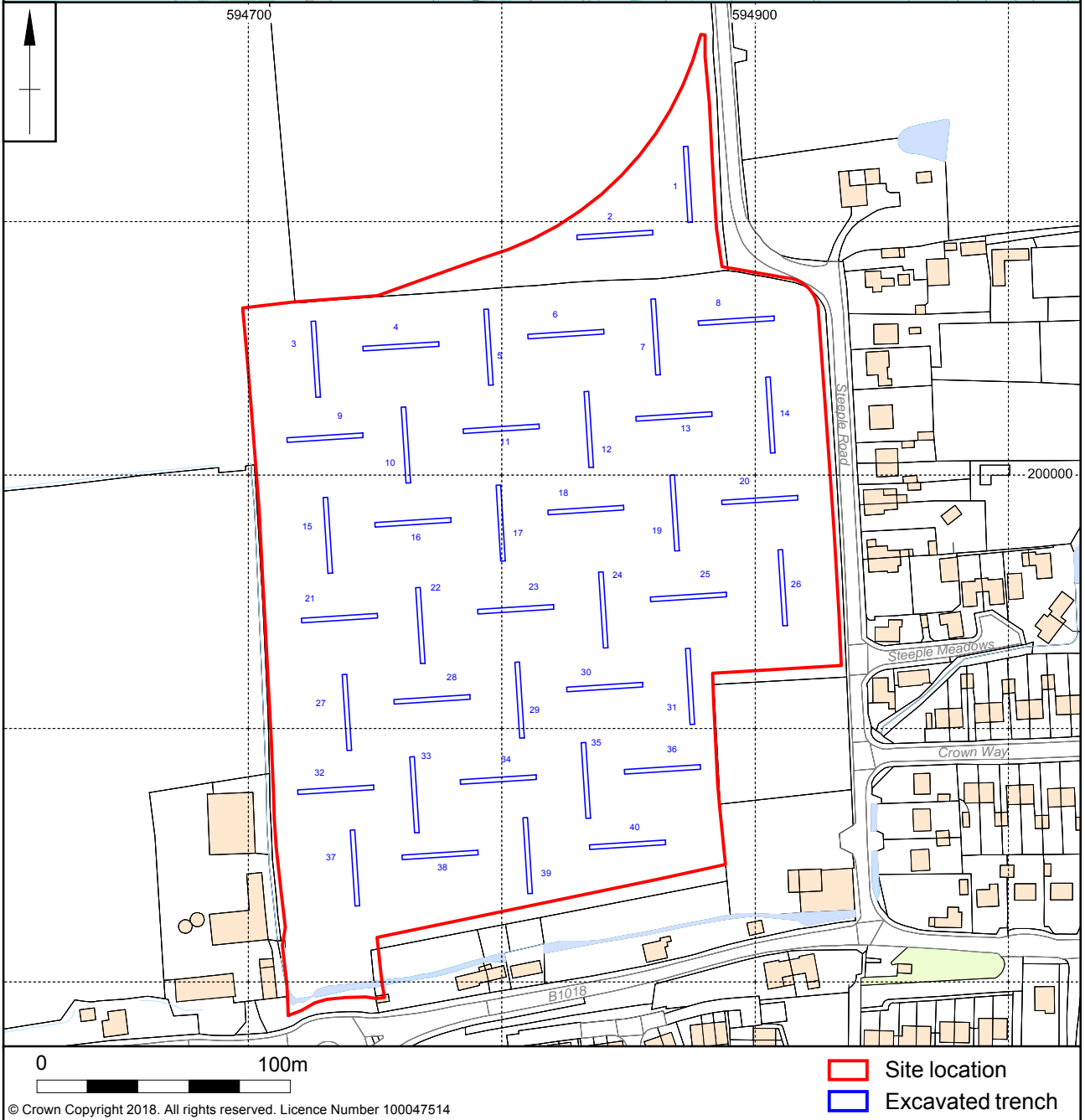
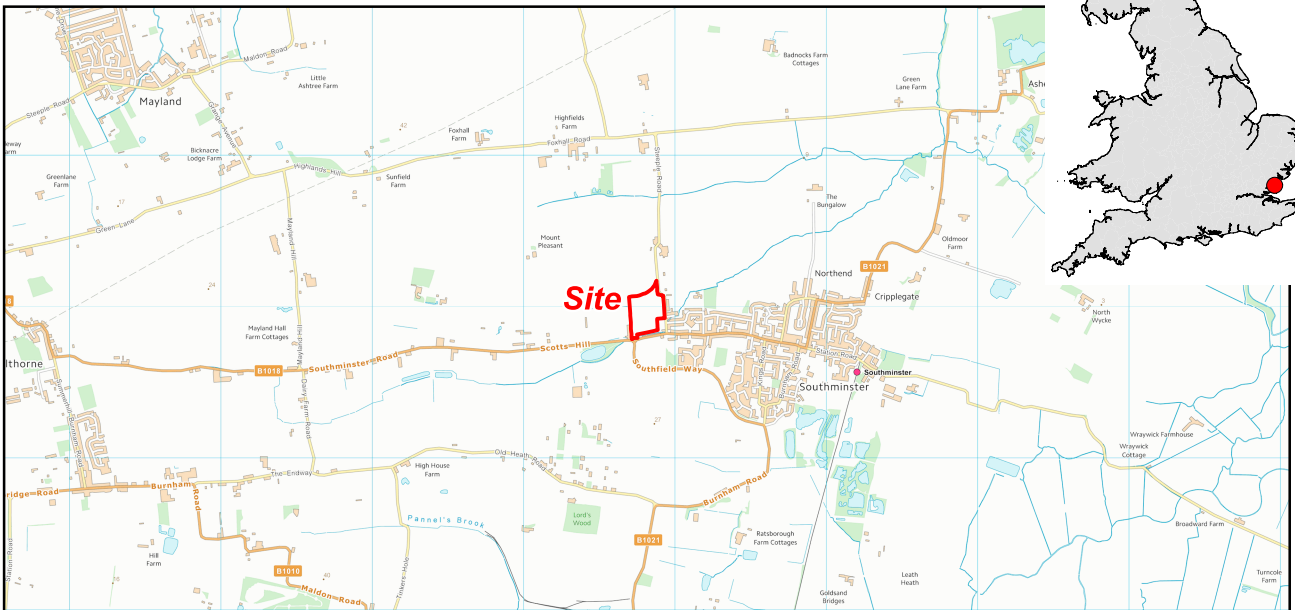
MOLA (Museum of London Archaeology) was commissioned by Archaeology Collective on behalf of David Wilson Homes to undertake an archaeological trial trench evaluation on land at Theedhams Farm, Steeple Road Southminster, Essex. Forty 30m long trenches across the development area. Post-medieval field ditches and a single furrow were recorded, from which came small pieces of 19th-century clay tobacco pipe. No other archaeological features or finds were observed.

1 INTRODUCTION

MOLA (Museum of London Archaeology) was commissioned by Archaeology Collective on behalf of David Wilson Homes to undertake an archaeological trial trench evaluation for a proposed development site on Theedhams Farm, Steeple Road, Southminster, Essex (NGR TQ 94809 99942, Fig 1).

A Written Scheme of Investigation (WSI) was prepared by MOLA (MOLA 2018). It described the proposed methodology to be undertaken for the fieldwork. All works were undertaken in accordance with current best archaeological practice as defined in the Chartered Institute for Archaeologists' *Code of Conduct* (CIfA 2014b), and *Standard and Guidance for Archaeological Field Evaluation* (CIfA 2014a), as well as the Historic England procedural document *Management of Research Projects in the Historic Environment (MoRPHE)* (HE 2015).

Following approval of this report, a cross-referenced site archive will be produced and deposited with Essex Museums under an Accession Number TBC.



© Crown Copyright 2018. All rights reserved. Licence Number 100047514

Scale 1:2500

Site location and excavated trenches Fig 1

2 AIMS AND OBJECTIVES

The main objective of the trial trench evaluation was to record the location, extent, date, character, condition, significance, and quality of any surviving archaeological remains. The evaluation specifically aimed to characterise:

- the date, nature, significance and extent of activity or occupation in the development site;
- the potential relationship of any remains found to the surrounding contemporary landscapes;
- the potential for the recovery of finds to assist in the development of artefact studies within the region;
- the potential for palaeo-environmental remains to determine local environmental conditions, including the presence/absence of palaeosoils, palaeochannels, and buried land surfaces;
- to understand the character of deposits, their formation within cut features, and the site formation processes generally;
- the impact of the proposed works upon any surviving archaeological remains;
- to inform any future decisions by the planning authority regarding approaches to archaeological preservation, conservation and mitigation.

Specific regional research frameworks were also assessed though, owing to the lack of archaeological remains could not be addressed by the results of this evaluation (Glazebrook 1997; Brown and Glazebrook 2000; Medlycott 2011).

3 BACKGROUND

3.1 Location, topography and geology

The proposed development is located west of Southminster. The site was an arable field which covered an area of c5.5ha. The site is bounded to the north and west by arable fields bounded by hedges. To the east is Steeple Road with housing on the east side of the road. To the south lies more housing and in the south-east corner of the proposed development is the premise of a ground maintenance contractor.

The underlying solid geology is clay silt and sand of the London Clay Formation. Alluvial deposits are identified in the south east corner of the site (BGS 2018). The soils are predominantly of Windsor Association (712c), seasonally waterlogged clayey soils with brown subsoil, with areas of Hurst Association (841b) loamy permeable soils over gravel that are frequently affected by groundwater (LAT 1983).

3.2 Historical and archaeological background

The following historic background contains selected summarised data of the Historic Environment Record (HER) for Essex extracted from the desk-based assessment (Lord 2017). All the monuments within a 0.5km search radius of the site are summarised in Appendix 1. Numbers in brackets refer to the Essex HER reference numbers.

The site does not contain any designated archaeological assets such as Scheduled Monuments or Registered Battlefields and there are no known non-designated assets.

A Roman cemetery was excavated at Caidge Farm (32912) and lies 0.5km to the south-west of the site. The Parish Church of St. Leonard in the historic centre of Southminster 1.0km to the east contains some Roman brick.

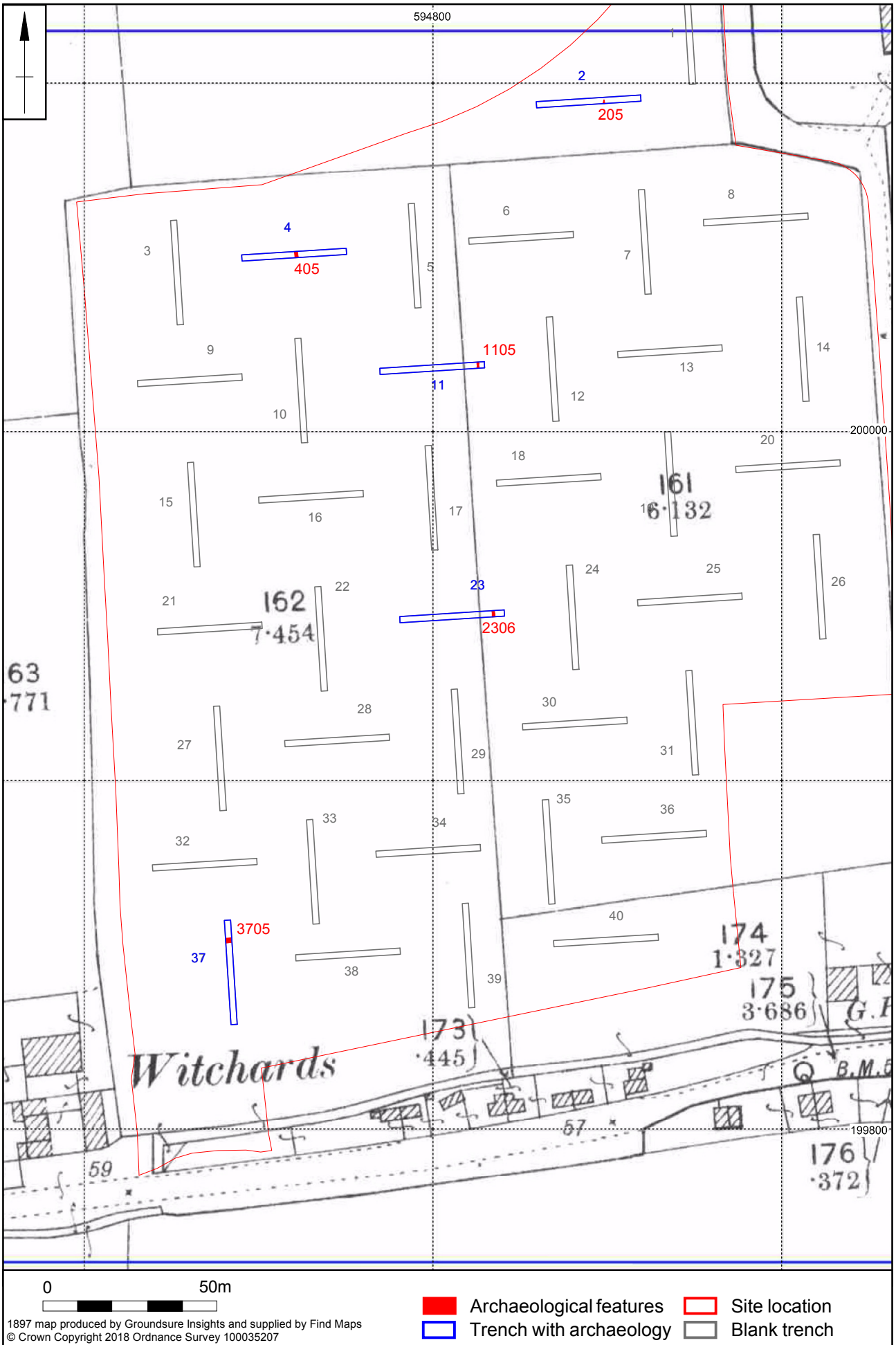
Southminster is mentioned in the Domesday Book as of 65 households in the *Wibrihtesherne*. Value to the Lord in 1066 was £36 and value to the Lord in 1086 was £24. There were 11 villagers, 41 small holders and 13 slaves. There were 10 Lord's plough teams and 11 men's plough teams. Pasture for 1300 sheep, 11 cattle, 20 pigs and 696 sheep. The overlord in 1066 and 1086 was the Bishop of London.

The name *Southminster* means south church and is first recorded in the 11th century. The historic settlement (1033447) lies 1.0km to the east of the present site and dates from the Saxon, medieval, post-medieval and modern periods.

Listed Buildings within the search area include Caidge Farmhouse (1014132) – Grade II Listed timber framed house and a Byre (1014134) Grade II Listed Buildings including a piggery and cow house.

Previous archaeological works

No previous archaeological works have been undertaken within the development area.



Scale 1:1500

1897 OS 1:2500 County Series map with excavated features shown Fig 2

4 EXCAVATION METHODOLOGY

A 4% sample of the land proposed for development impact (c0.2ha) was subject to trial trench evaluation. This comprised 1200m of linear trial trenches across the extent of the area of impact, equalling 40 trenches, each 30m long and 1.8m wide (Fig 1).

The trenches were accurately measured in using Leica Viva Survey Grade RTK GPS using SMARTNET real-time corrections, operating to a 3D tolerance of $\pm 0.05\text{m}$ to Ordnance Survey National Grid and Datum. The trenches were excavated by a 360 mechanical excavator fitted with a toothless bucket 1.8m wide, to reveal archaeological remains or, undisturbed natural horizons.

The trenches were cleaned sufficiently to enhance the definition of features, unless it is certain that there were no archaeological remains present. All archaeological features were investigated.

All archaeological deposits and artefacts encountered during the course of the excavation were fully recorded. Recording followed standard fieldwork procedures (MOLA 2014). All archaeological features were given a unique context number with deposits described on *pro-forma* context sheets to include details of the context, its relationships, interpretation and a checklist of associated finds.

Archaeological features were plotted on trench plans at 1:50 scale. Sections were drawn in greater detail at 1:10 scale. All levels were related to Ordnance Datum.

A photographic record was maintained by high resolution digital photography exceeding 12 megapixels, and 35mm monochrome film negatives. Images of the site were taken prior to excavation and after backfilling. All photographs included a north arrow and suitable photographic scale.

5 THE EXCAVATED EVIDENCE

Forty 30m long trenches were excavated across the development area (Fig 1). The geological substrate across the site consisted of a light orange-brown sandy clay with occasional small stones mixed in with the occasional pink clay patches. The overlying subsoil was a mid-orange brown sandy clay, often mixed with natural and subsoil from ploughing, with occasional small stones and flint. Overlying the subsoil, the topsoil was a firm dark brown grey clay loam with occasional small stones. The trenches were all had a very similar depth ranging between 0.30m and 0.49m, with the deeper trenches being at the bottom of the slope.

The majority of the trenches were void of any archaeological features with the exception of Trenches, 2, 4, 11, 23 and 37, which contained post medieval features that correlated well with field boundaries identified on the 1st edition 1897 Ordnance Survey map (Fig 2). Full context information has been included in the context inventory in Appendix 1.

Trench 2

Trench 2 was situated in the north of the site, aligned east-west (Fig 1). One ditch terminus [205] was excavated aligned north to south, cutting through the subsoil in the centre of the trench/ The ditch was 0.54m wide by 0.21m deep and filled by (204) which contained two pieces of clay pipe. The edges were irregular with gentle sloping sides with a base with an irregular profile at the base with a mid-blue grey fill of mixed subsoils and naturals (see Fig 3). Irregular edges suggest rooting disturbance and could be evidence of an old boundary ditch or hedgerow.



Post-medieval ditch [207], looking south Fig 3

Trench 4

Trench 4 was situated on the north-western side of the site on an east-west alignment (Fig 1). One furrow [405] was excavated on a north-south alignment (Fig 4). Owing to the sloping of the field and shallow depth the furrow is not visible in the other trenches. No dating evidence was uncovered from the feature.



Furrow [405], looking north Fig 4

Trench 11 and 23

Trench 11 was situated just north of the centre of the site on an east-west alignment and Trench 23 was just south of the centre aligned east-west (Fig 1). A single ditch [1105] and [2306] was excavated in both trenches aligned north-south. The fill comprised a mixed blue grey, silty clay fill (1104), which was the same as (2305). The upper fill comprised a mid-brownish yellow sandy clay, redeposited natural upper fill being present in (1106) and a compact mid blue grey sandy clay the upper fill of (2304) (Fig 5). No finds were found in either of the excavated sections. Like ditch [205], the ditch in Trenches 11 and 23 cuts through the subsoil and is probably post-medieval in origin marking out an old field boundary or drainage.



Post-medieval ditch [1105], looking north Fig 5

Trench 37

Trench 37 was situated on the south-western end of the site aligned north-south (Fig 1). One ditch [3705] was excavated on an east-west alignment (Fig 6). The ditch had a shallow U-shaped profile and was observed to cut the subsoil (3702). The ditch was 1.17m wide and 0.25m deep. The fill (3704) was mid orange-brown sandy clay; the fill was very similar to the surrounding natural and may reflect naturally accumulated material. The ditch itself runs at a right angle to the ditch excavated in Trench 11 and 23 and is most likely a post-medieval field boundary. It was cut on its northern edge by a land drain.



Post-medieval ditch [3705] with land drain on its northern edge, looking east Fig 6

6 CLAY TOBACCO-PIPE by Tora Hylton

Part of a clay tobacco-pipe bowl and a stem fragment were recovered from fill (205) in ditch [204]. The bowl fragment comprises part of the base, spur and a vestige of the pipe stem. Since the bowl is incomplete it has not been possible to classify it according to Oswald's simplified typology using bowl and foot/spur forms (1975, 37-41). Part of a motif is visible on the back of the bowl and the spur is marked with the maker's initials 'E L' in relief, one letter either side of the spur. A pipe maker with the name of E. Louthrop has been recorded in directories dated 1839-45 and is known to have worked in Colchester, Essex (cf. Oswald 1975, 170), c30miles to the north of Southminster.

The stem fragment is plain, and measures c19mm in length. Changes in manufacturing technique and the use of finer wire to make the bore ensured that there was a regular reduction in bore diameter between c1620 and 1800. Bores are measured by 64's of an inch and the measurement of this example (4/64's) suggests that, in tandem with the bowl, the stem dates to the 19th century.

7 DISCUSSION

The archaeological features identified during trial trench evaluation comprised of post-medieval field ditches and a furrow. Field drains and tree holes comprised the only remains in the other excavated trenches.

The ditch in Trench 11 and 23 correlated well with a field boundary shown on the 1st edition 1897 Ordnance Survey map (Fig 2). The ditch in Trench 37 lay at a right angle

helping to mark out the post-medieval farming landscape. The ditch in Trench 2, however, does not match any recorded features, but may be the remains of an old boundary hedgerow or small drainage ditch. One surviving furrow was excavated in Trench 4 but no furrows were visible elsewhere owing to shallow depth of the plough soils and the slope of the field.

BIBLIOGRAPHY

BGS 2018 *British Geological Survey GeolIndex*, available online at <http://mapapps.bgs.ac.uk/geologyofbritain/home.html>,

Brown, N, and Glazebrook, J (eds) 2000 *Research and Archaeology, A Framework for the Eastern Counties: 2, Research Agenda and Strategy*, East Anglian Archaeology Occasional Papers, **8**

CIfA 2014a *Standards and Guidance for an Archaeological Field Evaluation*, Chartered Institute for Archaeologists

CIfA 2014b *Code of Conduct*, Chartered Institute for Archaeologists

Glazebrook, J, 1997 *Research and Archaeology, A Framework for the Eastern Counties: 1, Resource Assessment*, East Anglian Archaeology Occasional Papers, **3**

HE 2015 *Management of Research Projects in the Historic Environment (MoRPHE)*, Historic England Procedural Document

LAT 1983 *Soils of Eastern England, Sheet 4 (1:250,000)*, Soil Survey for England and Wales, Lawes Agricultural Trust

Lord, J, 2017 *Archaeological Desk Based Assessment: Theedhams Farm, Steeple Road, Southminster, Essex*, Archaeology Collective, **AC00300A**

Medlycott, M, 2011 *Research and Archaeology Revisited: A Revised Framework for the East of England*, East Anglian Archaeology Occasional Papers **24**

MOLA 2014 *Archaeological Fieldwork Manual*, MOLA Northampton

MOLA 2018 *Written Scheme of Investigation for archaeological trial trench evaluation on land at Theedhams Farm, Steeple Road Southminster, Essex* MOLA Northampton

Oswald, A, 1975 *Clay Pipes for the Archaeologist*, BAR **14**

MOLA

19 March 2018

APPENDIX: CONTEXT INVENTORY

Trench No	Length, width & alignment	Height of ground surface	Height of natural	
1	30m x 1.8m N-S	18.551m aOD	18.231m aOD	
Context	Context type Feature & type	Description	Dimensions	Artefacts/ Samples
101	Topsoil	Firm mid grey brown clay loam	0.19m deep	-
102	Subsoil	Firm light grey brown silty clay	0.14m deep	-
103	Natural	Mid orange brown sandy clay occasional to moderate small stone	-	-

Trench No	Length, width & alignment	Height of ground surface	Height of natural	
2	30m x 1.8m E-W	18.694m aOD	18.364m aOD	
Context	Context type Feature & type	Description	Dimensions	Artefacts/ Samples
201	Topsoil	Firm mid grey brown clay loam	0.28m deep	-
202	Subsoil	Firm mid grey brown silty clay	0.05m deep	-
203	Natural	Mid orange brown sandy clay, occasional small stones		
204	Fill	Firm mid blue grey, silty clay, occasional stones.	0.54m wide 0.21m deep	Clay pipe
205	Cut	Cut of modern ditch with rooting disturbance. Irregular gentle sloping sides with V-shape base.	0.54m wide 0.21m deep	

Trench No	Length, width & alignment	Height of ground surface	Height of natural	
3	30m x 1.8m N-S	19.787m aOD	19.417m aOD	
Context	Context type Feature & type	Description	Dimensions	Artefacts/ Samples
301	Topsoil	Firm dark grey brown clay loam	0.22m deep	-
302	Subsoil	Firm light orange brown sandy clay	0.15 deep	-
303	Natural	Mid orange brown sandy clay		

Trench No	Length, width & alignment	Height of ground surface	Height of natural	
4	30m x 1.8m E-W	19.131m aOD	18.781m aOD	
Context	Context type Feature & type	Description	Dimensions	Artefacts/ Samples
401	Topsoil	Firm dark grey brown clay loam	0.23m deep	-
402	Subsoil	Mid orange brown sandy clay	0.12m deep	-
403	Natural	Light orange brown sandy clay		
404	Fill	Firm mid greyish brown, silty clay with occasional small stones	1.16m wide 0.15m deep	
405	Cut	N-S furrow, gradual sides and shallow uneven base	1.16m wide 0.15m deep	

Trench No	Length, width & alignment	Height of ground surface	Height of natural	
5	30m x 1.8m N-S	18.859m aOD	18.489m aOD	
Context	Context type Feature & type	Description	Dimensions	Artefacts/ Samples
501	Topsoil	Firm dark grey brown clay loam	0.29m deep	-
502	Subsoil	Mid orange brown sandy clay	0.08m deep	-
503	Natural	Mid orange brown sandy clay		

Trench No	Length, width & alignment	Height of ground surface	Height of natural	
6	30m x 1.8m E-W	18.328m aOD	17.978m aOD	
Context	Context type Feature & type	Description	Dimensions	Artefacts/ Samples
601	Topsoil	Firm dark grey brown clay loam	0.23m deep	-
602	Subsoil	Mid orange brown sandy clay	0.12m deep	-
603	Natural	Light orange brown sandy clay		

Trench No	Length, width & alignment	Height of ground surface	Height of natural	
7	30m x 1.8m N-S	17.715m aOD	17.355m aOD	
Context	Context type Feature & type	Description	Dimensions	Artefacts/ Samples
701	Topsoil	Firm dark grey brown clay loam	0.21m deep	-
702	Subsoil	Mid orange brown sandy clay	0.15m deep	-
703	Natural	Light orange brown sandy clay		

Trench No	Length, width & alignment	Height of ground surface	Height of natural	
8	30m x 1.8m E-W	17.279m aOD	16.869m aOD	
Context	Context type Feature & type	Description	Dimensions	Artefacts/ Samples
801	Topsoil	Firm dark grey brown clay loam	0.23m deep	-
802	Subsoil	Mid orange brown sandy clay	0.18m deep	-
803	Natural	Light orange brown sandy clay		

Trench No	Length, width & alignment	Height of ground surface	Height of natural	
9	30m x 1.8m E-W	18.902m aOD	18.512m aOD	
Context	Context type Feature & type	Description	Dimensions	Artefacts/ Samples
901	Topsoil	Firm dark grey brown clay loam	0.20m deep	-
902	Subsoil	Mid orange brown silty clay	0.19m deep	-
903	Natural	Light orange brown silty clay	-	-

Trench No	Length, width & alignment	Height of ground surface	Height of natural	
10	30m x 1.8m N-S	18.484m aOD	18.134m aOD	
Context	Context type Feature & type	Description	Dimensions	Artefacts/ Samples
1001	Topsoil	Firm dark grey brown clay loam	0.20m deep	-
1002	Subsoil	Mid orange brown sandy clay	0.15m deep	-
1003	Natural	Light orange brown sandy clay		

Trench No	Length, width & alignment	Height of ground surface	Height of natural	
11	30m x 1.8m E-W	18.157m aOD	17.677m aOD	
Context	Context type Feature & type	Description	Dimensions	Artefacts/ Samples
1101	Topsoil	Firm mid grey brown clay loam	0.36m deep	-
1102	Subsoil	Mid orange brown sandy clay	0.12m deep	-
1103	Natural	Mid orange brown sandy clay	-	-
1104	Fill	Basal, dark blue grey, silty clay, occasional charcoal	0.70m wide 0.14m deep	
1105	Cut	Post medieval ditch, moderate sloping edges with V-shape base	0.70m wide 0.26m deep	
1106	Fill	Upper, mid yellow brown clay, redeposited natural	0.37m wide 0.11m deep	

Trench No	Length, width & alignment	Height of ground surface	Height of natural	
12	30m x 1.8m N-S	17.692m aOD	17.312m aOD	
Context	Context type Feature & type	Description	Dimensions	Artefacts/ Samples
1201	Topsoil	Firm dark grey brown clay loam	0.25m deep	-
1202	Subsoil	Mid orange brown sandy clay, occasional small stones	0.13m deep	-
1203	Natural	Light orange brown, sandy clay, occasional small stones		

Trench No	Length, width & alignment	Height of ground surface	Height of natural	
13	30m x 1.8m E-W	17.284m aOD	16.854m aOD	
Context	Context type Feature & type	Description	Dimensions	Artefacts/ Samples
1301	Topsoil	Firm dark grey brown clay loam	0.29m deep	-
1302	Subsoil	Mid orange brown sandy clay	0.14m deep	-
1303	Natural	Light orange brown sandy clay		

Trench No	Length, width & alignment	Height of ground surface	Height of natural	
14	30m x 1.8m N-S	16.613m aOD	16.613m aOD	
Context	Context type Feature & type	Description	Dimensions	Artefacts/ Samples
1401	Topsoil	Firm dark grey brown clay loam	0.23m deep	-
1402	Subsoil	Mid orange brown sandy clay	0.15m deep	-
1403	Natural	Light orange brown sandy clay		

Trench No	Length, width & alignment	Height of ground surface	Height of natural	
15	30m x 1.8m N-S	18.149m aOD	17.759m aOD	
Context	Context type Feature & type	Description	Dimensions	Artefacts/ Samples
1501	Topsoil	Firm dark grey brown clay loam	0.24m deep	-
1502	Subsoil	Mid orange brown sandy clay	0.15m deep	-
1503	Natural	Light orange brown sandy clay	-	-

Trench No	Length, width & alignment	Height of ground surface	Height of natural	
16	30m x 1.8m E-W	17.788m aOD	17.448m aOD	
Context	Context type Feature & type	Description	Dimensions	Artefacts/ Samples
1601	Topsoil	Firm dark grey brown clay loam	0.22m deep	-
1602	Subsoil	Mid orange brown sandy clay	0.12m deep	-
1603	Natural	Light orange brown sandy clay		

Trench No	Length, width & alignment	Height of ground surface	Height of natural	
17	30m x 1.8m E-W	17.701m aOD	17.351m aOD	
Context	Context type Feature & type	Description	Dimensions	Artefacts/ Samples
1701	Topsoil	Firm dark grey brown clay loam	0.25m deep	-
1702	subsoil	Mid orange brown sandy clay	0.10m deep	-
1703	Natural	Light orange brown sandy clay		

Trench No	Length, width & alignment	Height of ground surface	Height of natural	
18	30m x 1.8m E-W	17.405m aOD	16.985m aOD	
<i>Context</i>	<i>Context type Feature & type</i>	<i>Description</i>	<i>Dimensions</i>	<i>Artefacts/Samples</i>
1801	Topsoil	Firm dark grey brown clay loam	0.28m deep	-
1802	Subsoil	Mid orange brown sandy clay	0.13m deep	-
1803	Natural	Light orange brown sandy clay		

Trench No	Length, width & alignment	Height of ground surface	Height of natural	
19	30m x 1.8m N-S	16.915m aOD	16.555m aOD	
<i>Context</i>	<i>Context type Feature & type</i>	<i>Description</i>	<i>Dimensions</i>	<i>Artefacts/Samples</i>
1901	Topsoil	Firm dark grey brown clay loam	0.20m deep	-
1902	Subsoil	Mid orange brown sandy clay	0.16m deep	-
1903	Natural	Light orange brown sandy clay		

Trench No	Length, width & alignment	Height of ground surface	Height of natural	
20	30m x 1.8m E-W	16.627m aOD	16.247m aOD	
<i>Context</i>	<i>Context type Feature & type</i>	<i>Description</i>	<i>Dimensions</i>	<i>Artefacts/Samples</i>
2001	Topsoil	Firm dark grey brown clay loam	0.22m deep	-
2002	Subsoil	Mid orange brown sandy clay	0.16m deep	-
2003	Natural	Light orange sandy clay gravel	-	-

Trench No	Length, width & alignment	Height of ground surface	Height of natural	
21	30m x 1.8m E-W	17.485m aOD	17.105m aOD	
<i>Context</i>	<i>Context type Feature & type</i>	<i>Description</i>	<i>Dimensions</i>	<i>Artefacts/Samples</i>
2101	Topsoil	Firm dark grey brown clay loam	0.31m deep	-
2102	Subsoil	Mid orange brown sandy clay	0.07	-
2103	Natural	Light orange brown sandy clay		

Trench No	Length, width & alignment	Height of ground surface	Height of natural	
22	30m x 1.8m N-S	17.275m aOD	16.885m aOD	
Context	Context type Feature & type	Description	Dimensions	Artefacts/Samples
2201	Topsoil	Firm dark grey brown clay loam	0.21m deep	-
2202	Subsoil	Mid orange brown sandy clay	0.18m deep	-
2203	Natural	Light orange brown sandy clay	-	-

Trench No	Length, width & alignment	Height of ground surface	Height of natural	
23	30m x 1.8m E-W	17.042m aOD	16.642m aOD	
Context	Context type Feature & type	Description	Dimensions	Artefacts/Samples
2301	Topsoil	Firm dark grey brown clay loam	0.25m deep	-
2302	Subsoil	Mid orange brown sandy clay	0.15m deep	-
2303	Natural	Light orange brown sandy clay		-
2304	Fill	Compact mid brown yellow clay, occasional small stones and charcoal	0.55m wide 0.21m deep	-
2305	Fill	Firm dark brown grey silty clay, occasional small stones and charcoal	0.45m wide 0.13m deep	-
2306	Cut	N-S post medieval ditch same as [1105], moderate to steep sloping sides with narrow V-shape ditch	0.79m wide 0.35m deep	-

Trench No	Length, width & alignment	Height of ground surface	Height of natural	
24	30m x 1.8m N-S	17.081m aOD	16.731m aOD	
Context	Context type Feature & type	Description	Dimensions	Artefacts/Samples
2401	Topsoil	Firm dark grey brown clay loam	0.22m deep	-
2402	Subsoil	Mid orange brown sandy clay	0.13m deep	-
2403	Natural	Light orange brown sandy clay, occasional small stones	-	-

Trench No	Length, width & alignment	Height of ground surface	Height of natural	
25	30m x 1.8m E-W	16.760m aOD	16.390m aOD	
Context	Context type Feature & type	Description	Dimensions	Artefacts/ Samples
2501	Topsoil	Firm dark grey brown clay loam	0.22m deep	-
2502	Subsoil	Mid grey sandy clay	0.15m deep	-
2503	Natural	Mid orange sandy clay	-	-

Trench No	Length, width & alignment	Height of ground surface	Height of natural	
26	30m x 1.8m N-S	16.226m aOD	15.806m aOD	
Context	Context type Feature & type	Description	Dimensions	Artefacts/ Samples
2601	Topsoil	Firm dark grey brown clay loam	0.25m deep	-
2602	Subsoil	Mid orange brown sandy clay	0.17m deep	-
2603	Natural	Light orange brown sandy clays	-	-

Trench No	Length, width & alignment	Height of ground surface	Height of natural	
27	30m x 1.8m N-S	17.104m aOD	16.724m aOD	
Context	Context type Feature & type	Description	Dimensions	Artefacts/ Samples
2701	Topsoil	Firm dark grey brown clay loam	0.25m deep	-
2702	Subsoil	Mid orange brown sandy clay	0.13m deep	-
2703	Natural	Light orange brown sandy clay	-	-

Trench No	Length, width & alignment	Height of ground surface	Height of natural	
28	30m x 1.8m E-W	16.798m aOD	16.428m aOD	
Context	Context type Feature & type	Description	Dimensions	Artefacts/ Samples
2801	Topsoil	Firm dark grey brown clay loam	0.25m deep	-
2802	Subsoil	Mid orange brown sandy clay	0.12m deep	-
2803	Natural	Light orange brown sandy clay	-	-

Trench No	Length, width & alignment	Height of ground surface	Height of natural	
29	30m x 1.8m N-S	16.732m aOD	16.382m aOD	
<i>Context</i>	<i>Context type Feature & type</i>	<i>Description</i>	<i>Dimensions</i>	<i>Artefacts/Samples</i>
2901	Topsoil	Firm dark grey brown clay loam	0.28m deep	-
2902	Subsoil	Mid orange brown sandy clay	0.07m deep	-
2903	Natural	Light orange brown sandy clay		

Trench No	Length, width & alignment	Height of ground surface	Height of natural	
30	30m x 1.8m E-W	16.622m aOD	16.002m aOD	
<i>Context</i>	<i>Context type Feature & type</i>	<i>Description</i>	<i>Dimensions</i>	<i>Artefacts/Samples</i>
3001	Topsoil	Firm dark grey brown clay loam	0.44m deep	-
3002	Subsoil	Mid orange brown sandy clay	0.18m deep	-
3003	Natural	Light orange brown sandy clay	-	-

Trench No	Length, width & alignment	Height of ground surface	Height of natural	
31	30m x 1.8m N-S	16.362m aOD	16.022m aOD	
<i>Context</i>	<i>Context type Feature & type</i>	<i>Description</i>	<i>Dimensions</i>	<i>Artefacts/Samples</i>
3101	Topsoil	Firm dark grey brown clay loam	0.19m deep	-
3102	Subsoil	Mid orange brown sandy clay	0.15m deep	-
3103	Natural	Light orange brown sandy clay		

Trench No	Length, width & alignment	Height of ground surface	Height of natural	
32	30m x 1.8m E-W	17.262m aOD	16.882m aOD	
<i>Context</i>	<i>Context type Feature & type</i>	<i>Description</i>	<i>Dimensions</i>	<i>Artefacts/Samples</i>
3201	Topsoil	Firm dark grey brown clay loam	0.30m deep	-
3202	Subsoil	Mid orange brown sandy clay	0.08m deep	-
3203	Natural	Light orange brown sandy clay	-	-

Trench No	Length, width & alignment	Height of ground surface	Height of natural	
33	30m x 1.8m N-S	16.696m aOD	16.276m aOD	
<i>Context</i>	<i>Context type Feature & type</i>	<i>Description</i>	<i>Dimensions</i>	<i>Artefacts/ Samples</i>
3301	Topsoil	Firm dark grey brown clay loam	0.25m deep	-
3302	Subsoil	Mid orange brown sandy clay	0.17m deep	-
3303	Natural	Light orange brown sandy clay		

Trench No	Length, width & alignment	Height of ground surface	Height of natural	
34	30m x 1.8m E-W	16.508m aOD	16.128m aOD	
<i>Context</i>	<i>Context type Feature & type</i>	<i>Description</i>	<i>Dimensions</i>	<i>Artefacts/ Samples</i>
3401	Topsoil	Firm dark grey brown clay loam	0.24m deep	-
3402	Subsoil	Mid orange brown sandy clay	0.14m deep	-
3403	Natural	Light orange brown sandy clay	-	-

Trench No	Length, width & alignment	Height of ground surface	Height of natural	
35	30m x 1.8m N-S	16.392m aOD	15.952m aOD	
<i>Context</i>	<i>Context type Feature & type</i>	<i>Description</i>	<i>Dimensions</i>	<i>Artefacts/ Samples</i>
3301	Topsoil	Firm dark grey brown clay loam	0.30m deep	-
3302	Subsoil	Mid orange brown sandy clay	0.14m deep	-
3303	Natural	Light orange brown sandy clay	-	-

Trench No	Length, width & alignment	Height of ground surface	Height of natural	
36	30m x 1.8m E-W	16.156m aOD	15.646m aOD	
<i>Context</i>	<i>Context type Feature & type</i>	<i>Description</i>	<i>Dimensions</i>	<i>Artefacts/ Samples</i>
3601	Topsoil	Firm dark grey brown clay loam	0.28m deep	-
3602	Subsoil	Mid orange brown sandy clay	0.23m deep	-
3603	Natural	Light orange brown sandy clay	-	-

Trench No	Length, width & alignment	Height of ground surface	Height of natural	
37	30m x 1.8m N-S	16.822m aOD	16.462m aOD	
Context	Context type Feature & type	Description	Dimensions	Artefacts/Samples
3701	Topsoil	Firm dark grey brown clay loam	0.26m deep	-
3702	Subsoil	Mid orange brown sandy clay	0.10m deep	-
3703	Natural	Light orange brown sandy clay	-	-
3704	Fill	Firm mid orange brown sandy clay with frequent stones	1.17m wide 0.25m deep	
3705	Cut	E-W post medieval ditch, gradual sides and flattish uneven base. Cut on northern edge by a field drain	1.17m wide 0.25m deep	

Trench No	Length, width & alignment	Height of ground surface	Height of natural	
38	30m x 1.8m E-W	16.618m aOD	16.138m aOD	
Context	Context type Feature & type	Description	Dimensions	Artefacts/Samples
3801	Topsoil	Firm dark grey brown clay loam	0.28m deep	-
3802	Subsoil	Mid orange brown sandy clay	0.20m deep	-
3803	Natural	Light orange brown sandy clay	-	-

Trench No	Length, width & alignment	Height of ground surface	Height of natural	
39	30m x 1.8m N-S	16.255m aOD	15.855m aOD	
Context	Context type Feature & type	Description	Dimensions	Artefacts/Samples
3901	Topsoil	Firm dark grey brown clay loam	0.22m deep	-
3902	Subsoil	Mid orange brown sandy clay	0.18m deep	-
3903	Natural	Light orange brown sandy clay	-	-

Trench No	Length, width & alignment	Height of ground surface	Height of natural	
40	30m x 1.8m E-W	16.165m aOD	15.695m aOD	
Context	Context type Feature & type	Description	Dimensions	Artefacts/ Samples
4001	Topsoil	Firm dark grey brown clay loam	0.25m deep	-
4002	Subsoil	Mid orange brown sandy clay	0.22m deep	
4003	Natural	Light orange brown sandy clay		-



MOLA
Kent House
30 Billing Road
Northampton
NN1 5DQ
01604 809 800
www.mola.org.uk
sparry@mola.org.uk