

THE SWASH CHANNEL WRECK, DORSET TREE-RING ANALYSIS OF SHIP TIMBERS

SCIENTIFIC DATING REPORT

Nigel Nayling



This report has been prepared for use on the internet and the images within it have been down-sampled to optimise downloading and printing speeds.

Please note that as a result of this down-sampling the images are not of the highest quality and some of the fine detail may be lost. Any person wishing to obtain a high resolution copy of this report should refer to the ordering information on the following page.

R R S

THE SWASH CHANNEL WRECK, DORSET

TREE-RING ANALYSIS OF SHIP TIMBERS

N N

L N L GS

E H

ISSN

	<i>R</i>		<i>R</i>	<i>S</i>		<i>A</i>	<i>S</i>	<i>A</i>		<i>A</i>
<i>H</i>	<i>E</i>	<i>H</i>	<i>R</i>		<i>C</i>	<i>A</i>			<i>A</i>	<i>S</i>
<i>I</i>		<i>A</i>		<i>S</i>		<i>I</i>		<i>I</i>		<i>G</i>
	<i>S</i>		<i>S</i>	<i>L</i>	<i>I</i>		<i>C</i>	<i>A</i>	<i>I</i>	<i>R</i>
<i>S</i>		<i>A</i>		<i>I</i>	<i>R</i>	<i>S</i>	<i>A</i>		<i>I</i>	<i>R</i>
<i>S</i>										

O

E *R*
H

R
R

E *H* *C* *C* *R* *E* *O* *L*

SUMMARY

H S C
S
A
N A E G
G A

CONTRIBUTORS

N N

ACKNOWLEDGEMENTS

I A
I
E I
E H C

ARCHIVE LOCATION

H E R
E S
C C
C H C

DATE OF INVESTIGATION

CONTACT DETAILS

L L
S A H A
S
L
C SA E
E

CONTENTS

Introduction	1
Methodology	1
Results	2
Discussion.....	2
References.....	4
Figures	6
Tables	13

INTRODUCTION

H
H

S C

A

A N

E H

METHODOLOGY

I A
A

S

S

N

G

S

S

O

E L
H H

L
E H

C

N E

CRO S

A

C

RESULTS

A

SC

SC

SC

SC

SC

S

N

E

N

G

N

N

S

N

SC

O

A

SC

A

DISCUSSION

A

N

C

G

G

N

G

L

S E
C S N I
S S C E
G H A S C S

REFERENCES

GL R A
R 33

A *E S*
L G

G LG A
G N
R A A R I C H
C S A

E H L

H C H O
A
E A *S* 36:1

H G S E
O A
N A 178

AR A *R*
44

N N *S C*
H L A

N N *N E S*
E H R R S 25-2008

N N
S L A

A R G *S C S R*

A R G *S C A R*

A R G *S C S R*

I

FIGURES

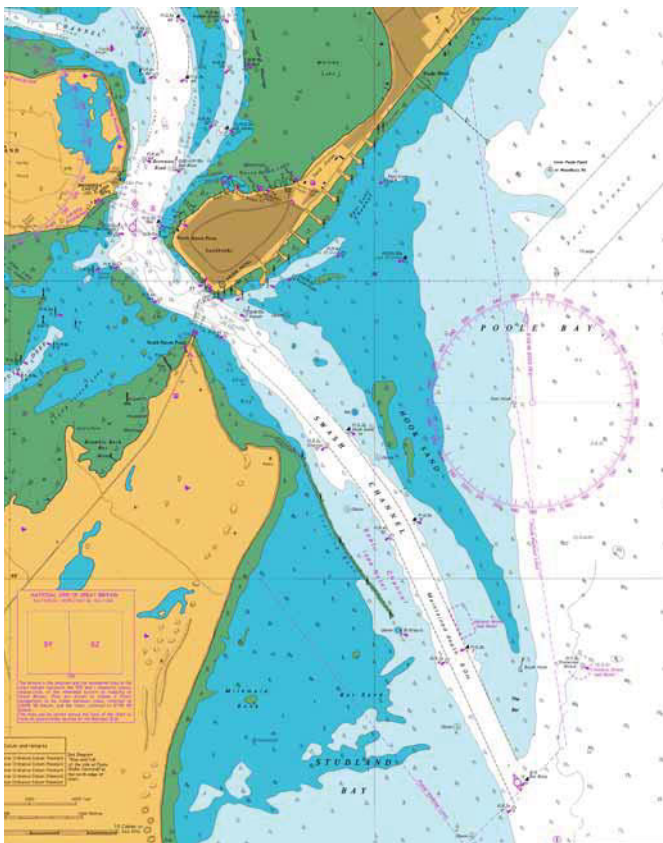
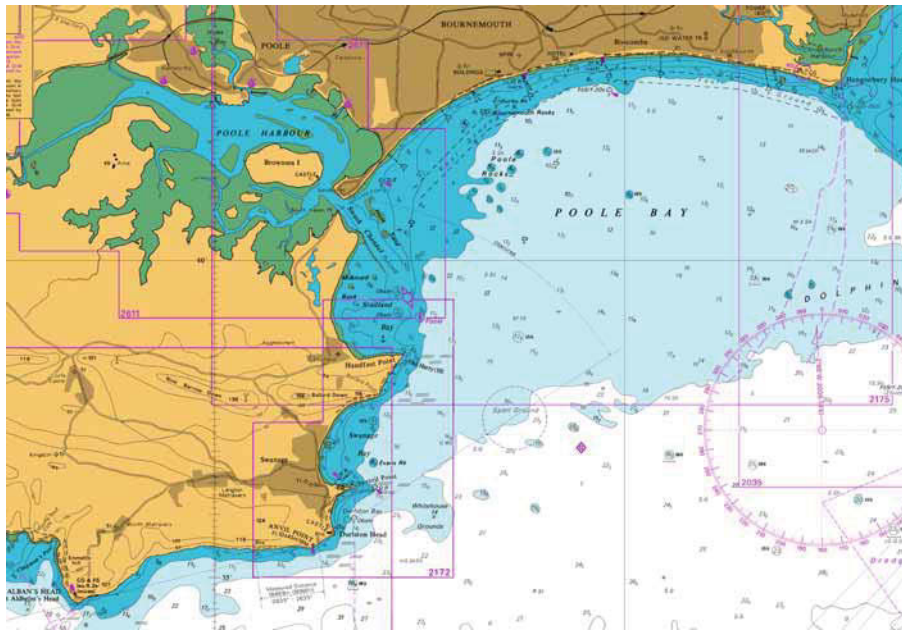


Figure 1 Location of the Designated Area of the Swash Channel Wreck under the Protection of Wrecks Act 1973. Poole Harbour and approaches (above) and detail (below) showing bounding box of designated area. Crown copyright

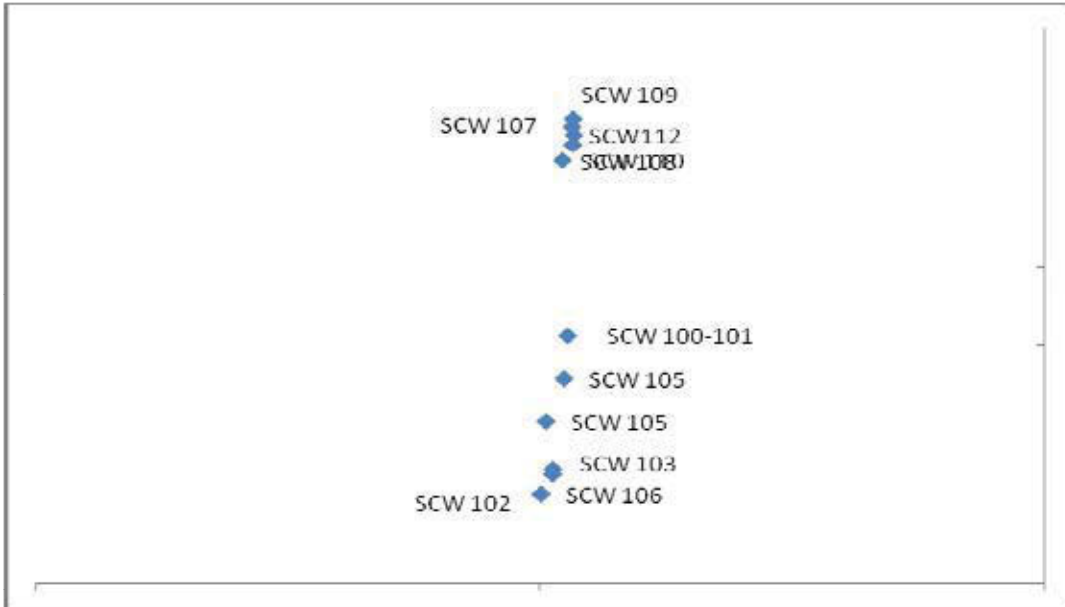


Figure 2 Location of samples taken. Co-ordinates are relative. Full mapping of sample locations will be undertaken during survey and excavation. Data from Wessex Archaeology



Figure 3 Photograph of sample location for SCW100 and SCW101. Crown copyright © Photo taken by Wessex Archaeology



Figure 4 Photograph of sample location for SCW 102. Crown copyright © Photo taken by Wessex Archaeology



Figure 5 Photograph of sample location for SCW 103. Crown copyright © Photo taken by Wessex Archaeology



Figure 6 Photograph of sample location for SCW 104. Crown copyright © Photo taken by Wessex Archaeology



Figure 7 Photograph of sample location for SCW 105. Crown copyright © Photo taken by Wessex Archaeology



Figure 8 Photograph of sample location for SCW 106. Crown copyright © Photo taken by Wessex Archaeology



Figure 9 Photograph of sample locations for SCW 107 and SCW 108. Crown copyright © Photo taken by Wessex Archaeology



Figure 10 Photograph of sample location for SCW109



*Figure 11 Photograph of sample location for SCW110 and SCW111. Crown copyright
© Photo taken by Wessex Archaeology*

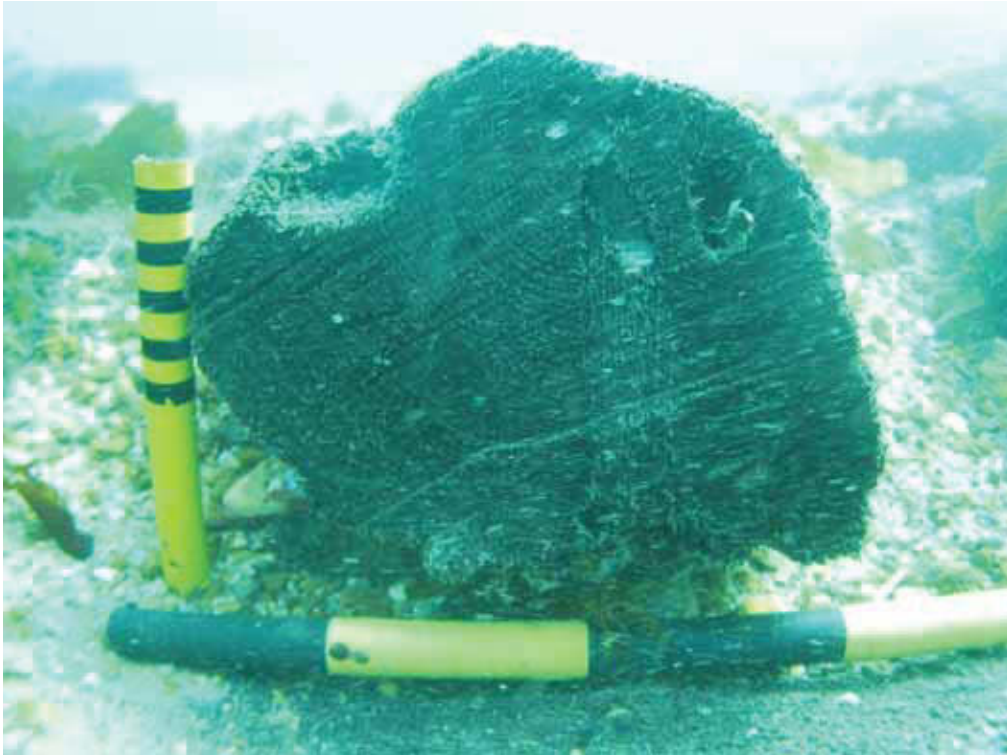


Figure 12 Photograph of sample location for SCW112. Crown copyright © Photo taken by Wessex Archaeology

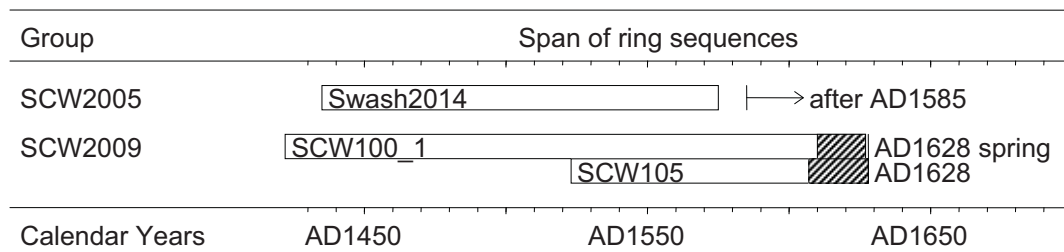


Figure 13 Bar diagram showing the date ranges of absolutely dated tree-ring series and implied dates of felling of the parent trees. White bars are heartwood; hatched bars are sapwood

TABLES

Table 1 Sample details, Swash Channel Wreck

S	A	C			S	AR		
SC		R					A	A
SC	R SC						A	A
SC		H						
SC		R						
SC		R			H S			
SC							A	A
SC		R						
SC								
SC								
SC	S	R						
SC	S	R						
SC		H			HS			
	AR		HS	S		A		

Table 2 Concordance between sample numbers given during sampling (and used in this report), and subsequent re-numberings. Data supplied by Wessex Archaeology

S N	O	O	S	A I A	A
	SC	SC	N N		
	SC	SC	N N		
	SC	SC	N N		
	SC	SC	N N		
	SC	SC	N N		
	SC	SC	N N		
	SC	SC	N N		
	SC	SC	N N		
	SC	SC	N N		
	SC	SC	N N		
	SC	SC	N N		
	SC	SC	N N		
	SC	SC	N N		

Table 3 Correlations between dated samples from the Swash Channel wreck; - = t-values less than 3.00

C	SC	SC	SC
---	----	----	----

S	SC
SC	

C	SC	SC
---	----	----

S

S	SC	SC
S		
SC		

Table 4 Correlations between the two dated samples and samples from wrecks in British waters and chronologies from the Netherlands and Germany.

S					SC	SC
N	N				NOR	
N	N				NOR	
N	N				NOR	
N	N				NOR	
S	N			S		
H	G	H	G	S		
N			L			
O	G		L			
		G				
	N					

Table 5 Tree-ring widths for dated samples.

SC A

 R

A

A

A

A

A

SC

A

R

A

A

A



ENGLISH HERITAGE RESEARCH DEPARTMENT

English Heritage undertakes and commissions research into the historic environment, and the issues that affect its condition and survival, in order to provide the understanding necessary for informed policy and decision making, for sustainable management, and to promote the widest access, appreciation and enjoyment of our heritage.

The Research Department provides English Heritage with this capacity in the fields of buildings history, archaeology, and landscape history. It brings together seven teams with complementary investigative and analytical skills to provide integrated research expertise across the range of the historic environment. These are:

- * Aerial Survey and Investigation*
- * Archaeological Projects (excavation)*
- * Archaeological Science*
- * Archaeological Survey and Investigation (landscape analysis)*
- * Architectural Investigation*
- * Imaging, Graphics and Survey (including measured and metric survey, and photography)*
- * Survey of London*

The Research Department undertakes a wide range of investigative and analytical projects, and provides quality assurance and management support for externally-commissioned research. We aim for innovative work of the highest quality which will set agendas and standards for the historic environment sector. In support of this, and to build capacity and promote best practice in the sector, we also publish guidance and provide advice and training. We support outreach and education activities and build these in to our projects and programmes wherever possible.

We make the results of our work available through the Research Department Report Series, and through journal publications and monographs. Our publication Research News, which appears three times a year, aims to keep our partners within and outside English Heritage up-to-date with our projects and activities. A full list of Research Department Reports, with abstracts and information on how to obtain copies, may be found on www.english-heritage.org.uk/researchreports

For further information visit www.english-heritage.org.uk

