

FORMER CHRIST'S COLLEGE SCHOOL  
HENDON LANE, FINCHLEY, LB BARNET

*Brief Assessment of the Significance of the  
Primary School Building*

*by*

A. R. Wittrick

Historical Analysis & Research Team  
*Reports and Papers (First Series, 30)*  
(1997)



ENGLISH HERITAGE

**Former CHRIST'S COLLEGE SCHOOL.**  
**Hendon Lane, Finchley**  
**LB Barnet.**

### **Primary School Building.**

CON:L SE have sought advice as to whether the above mentioned building merits inclusion on the statutory list. It is now occupied by Pardes House School and forms part of a complex of buildings within the area and currently used for primary education.

The main building on this rather cramped site, listed grade II, is the original and impressive school building of 1860-61 by the architect Edward Roberts. This building together with the primary school building, both occupy a focal point architecturally and aesthetically in the development of the area known as Church End.

### **HISTORY**

Christ's College became one of the most famous boarding schools within the London area and plans for its expansion were well under way by the early 1920's. The new building by Middlesex County Architect, H.G.Crothall FRIBA, was erected 1925-26 and opened in November 1927. It is 'L'-shaped on plan with the principal elevations fronting Hendon Lane. The larger range facing south has classrooms on two floors, an assembly hall and large gallery occupies the north-western wing. The main entrance was formerly through the octagonal hall, with direct access to the main corridor or onto the assembly hall.

The building is designed in an Arts & Crafts inspired, Tudor manner, a reflection of the old collegiate style. It has been constructed with a multi-coloured, load-bearing brick with stone dressings, buttressed on the main elevations, with plain tiled roof slopes and (ferro) concrete floors. Two rainwater hoppers are dated AD.1926. Centrally pivoted, metal window frames are used on all but the rear, south elevation, which is rather plain and has wooden frames.

Internally, the assembly hall (now used as a dining area) has a roof structure supported by hammer-beam trusses. The walls are half-panelled with balustraded balconies overlooking the hall from the upper floor. The octagonal room over the former entrance was used as a library.

### **RECOMMENDATION**

With the minor exception of the brick head of each of the three boiler flues from the basement, which have been simplified when reconstructed, little else has been altered and the building survives almost as built in 1926, both internally and externally. The original plans, which survive, confirm this fact. It is a good example of its type and characteristic of the period when it was built and of sufficient architectural interest to merit inclusion on the Secretary of State's statutory list.

Sources:

Information from LB Barnet Local Studies and Archives Centre  
(the archival records are very complete and easily accessible).

*History, Origin and Records of the Old Finchleian Club 1876-1946* - edited by P.A.Stein

*The Centenary Book of Christ's College, Finchley 1857-1957* - edited by A.T.Milne

*The Friend's of our Lives: A History of Christ's College and its Cricket* by S.Goldsmith  
(1992).

*Christ's College at Hendon Lane 1857-1991* (1991).

Original building plans.

*The Builder* November 18, 1927 pgs.778-780.

*The Builder* February 8, 1929 pg285 - obituary to the architect Mr.H.G.Crothall.

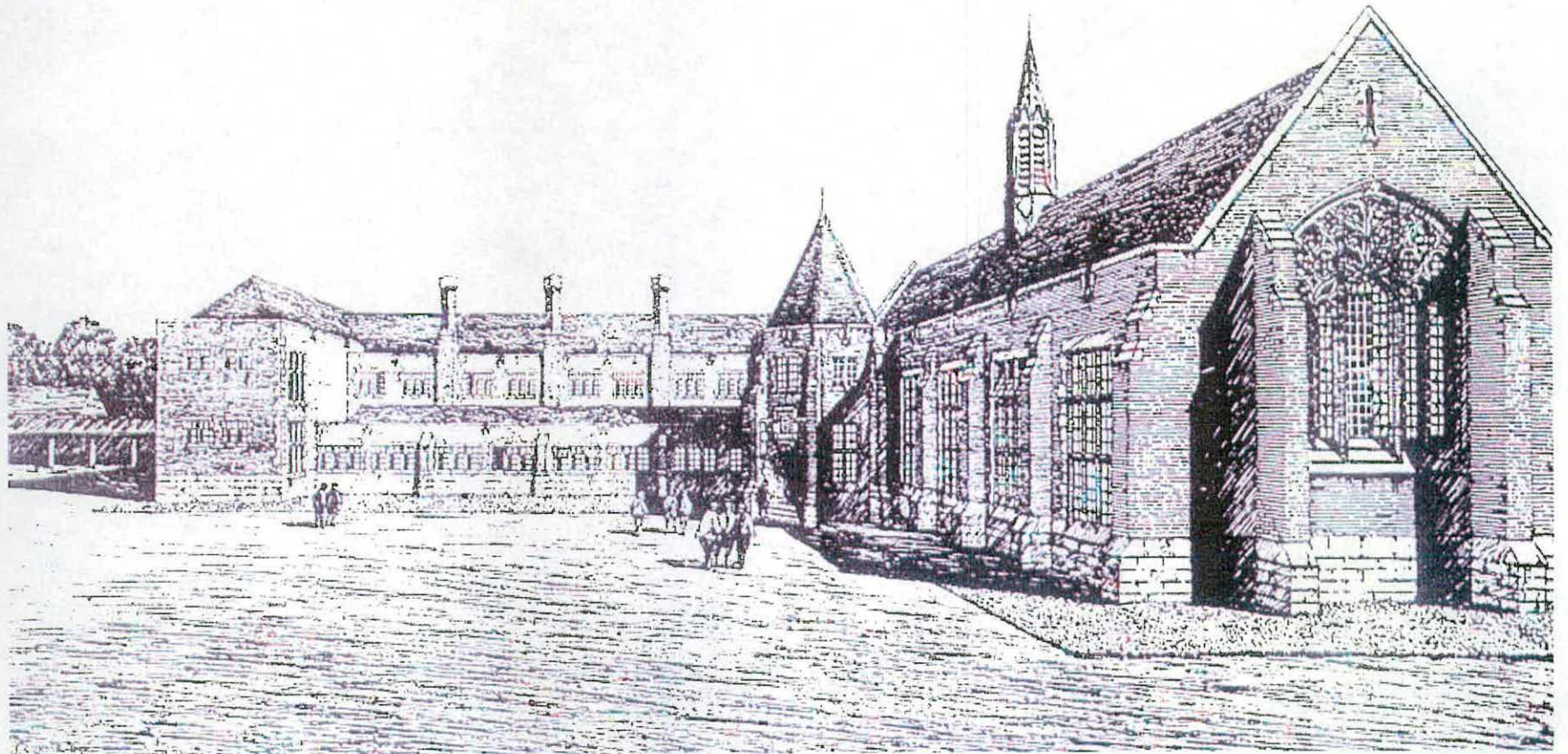
Andy Wittrick

HART

210SR

May/June 1997.

CHRIST'S COLLEGE FINCHLEY



*Fig. 1*

Christ's College, Finchley, by H G Crothall, architect to MCC, from article in 'The Builder' Nov 1927.

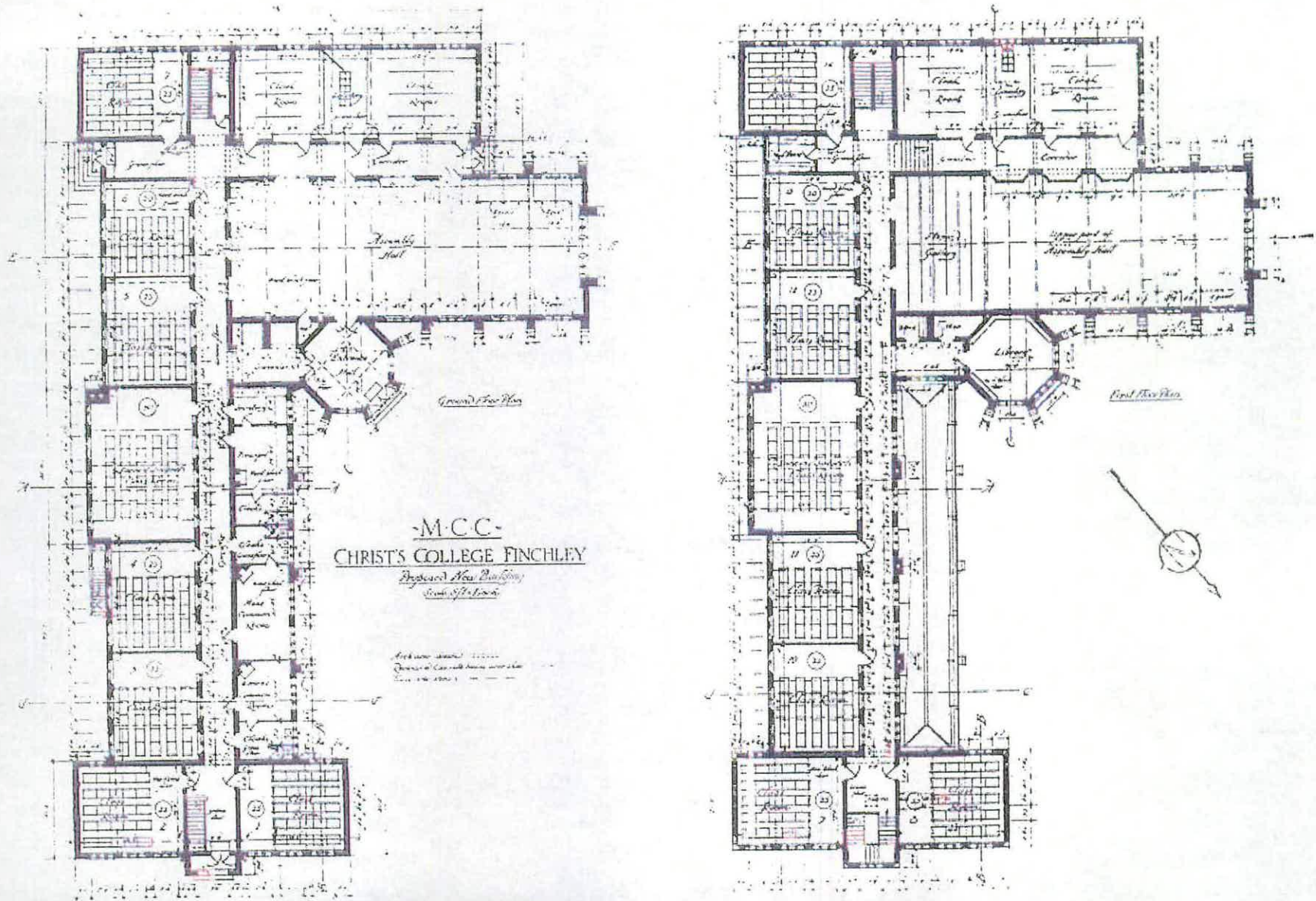
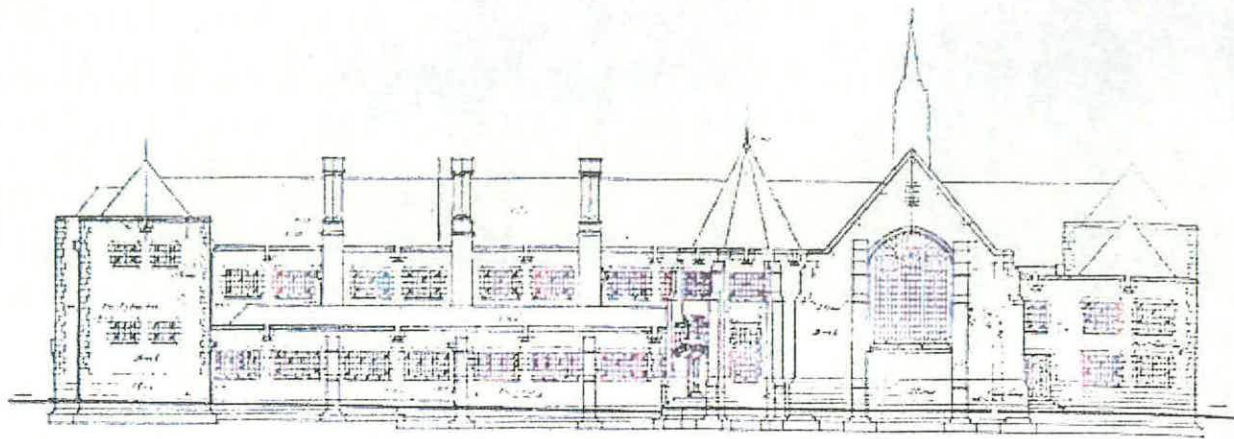
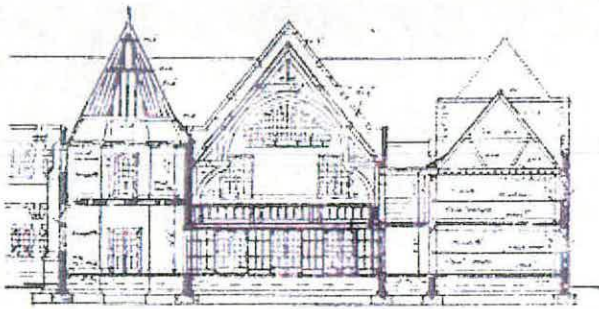


Fig.2

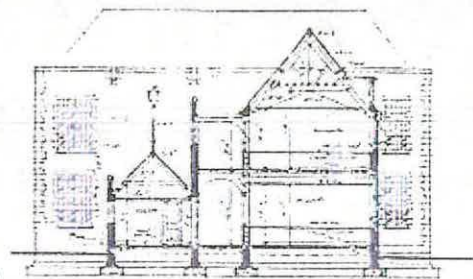
Christ's College, Finchley, by H G Crothall, Ground and First floor plans, from article in 'The Builder' Nov 1927.



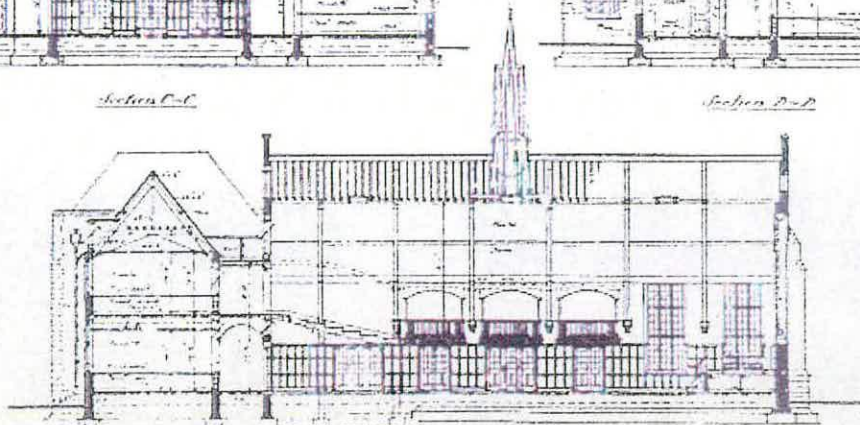
*North West Elevation*



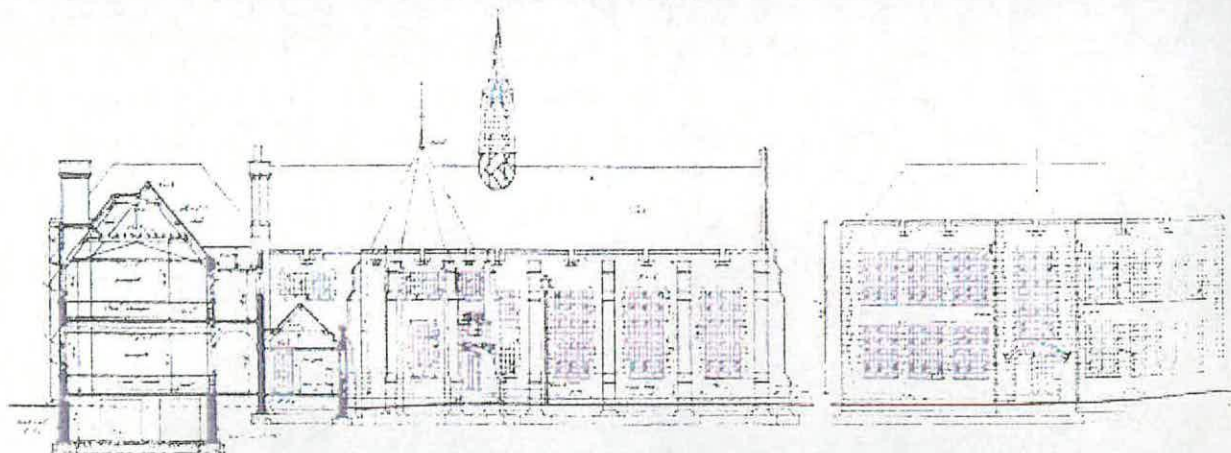
*Section C-C*



*Section D-D*



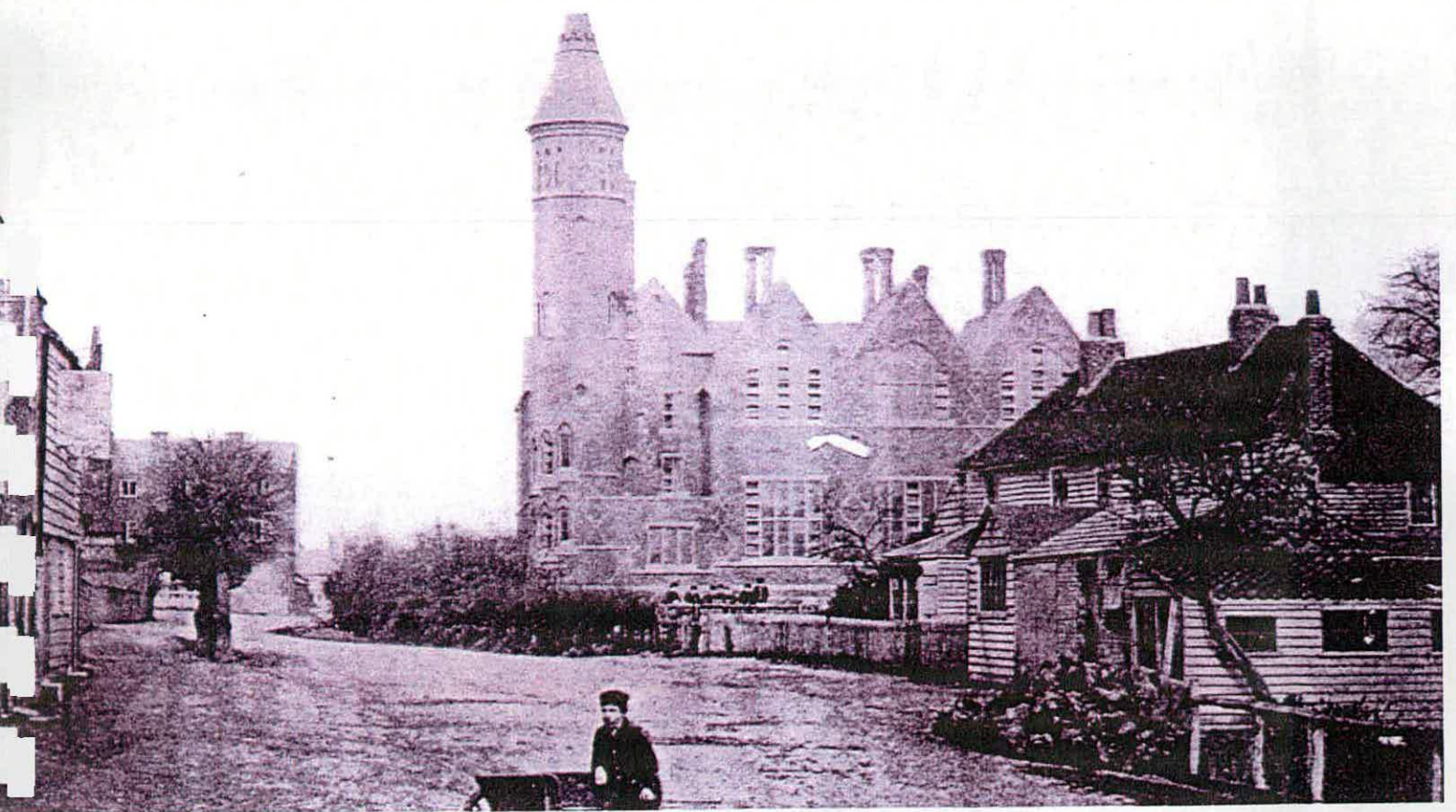
*Section E-E*



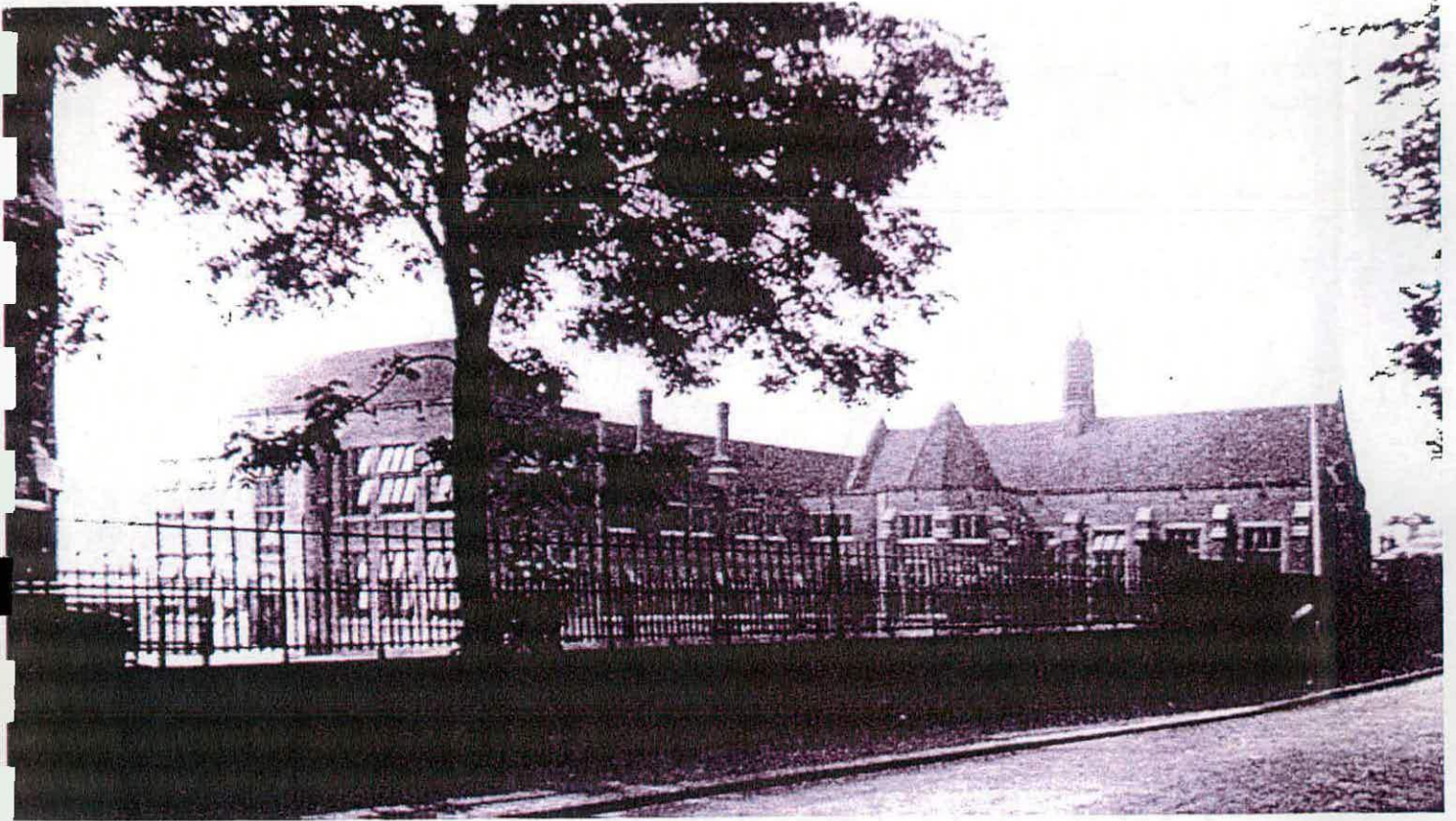
*Section F-F*

*North East Elevation*

*Fig.3*  
Christ's College, Finchley, elevations and sections c1927



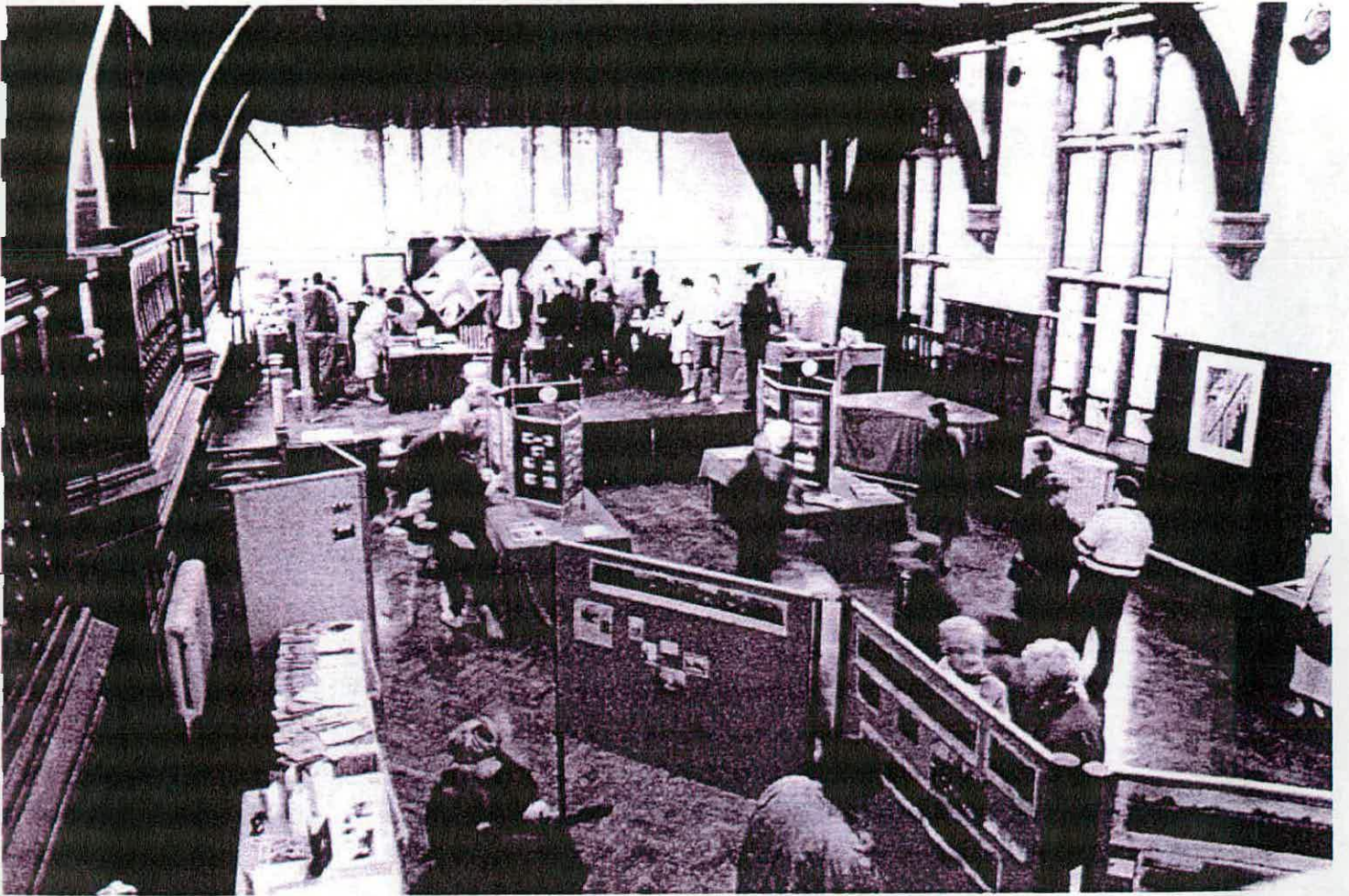
*Fig.4*  
Christ's College, Finchley, Hendon Lane 1870



*Fig.5*

'The New Building', Christ's College, Finchley, Hendon Lane c1927





*Fig.6*  
Christ's College, Finchley, interior of the hall