

# LAKES AND DALES NAIS, KITRIDDING HILL, LUPTON, CUMBRIA REPORT ON GEOPHYSICAL SURVEY, JULY 2013

Neil Linford, Paul Linford, Andrew Payne and Ian Hardwick



*This report has been prepared for use on the internet and the images within it have been down-sampled to optimise downloading and printing speeds.*

*Please note that as a result of this down-sampling the images are not of the highest quality and some of the fine detail may be lost. Any person wishing to obtain a high resolution copy of this report should refer to the ordering information on the following page.*

**LAKES AND DALES NAIS,  
KITRIDDING HILL, LUPTON, CUMBRIA**

**REPORT ON GEOPHYSICAL SURVEYS, JULY 2013**

Neil Linford, Paul Linford, Andrew Payne and Ian Hardwick

NGR: SD 584 843

© English Heritage

ISSN 2046-9799 (Print)

ISSN 2046-9802 (Online)

*The Research Report Series incorporates reports by the expert teams within the Investigation & Analysis Division of the Heritage Protection Department of English Heritage, alongside contributions from other parts of the organisation. It replaces the former Centre for Archaeology Reports Series, the Archaeological Investigation Report Series, the Architectural Investigation Report Series, and the Research Department Report Series.*

*Many of the Research Reports are of an interim nature and serve to make available the results of specialist investigations in advance of full publication. They are not usually subject to external refereeing, and their conclusions may sometimes have to be modified in the light of information not available at the time of the investigation. Where no final project report is available, readers must consult the author before citing these reports in any publication. Opinions expressed in Research Reports are those of the author(s) and are not necessarily those of English Heritage.*

*Requests for further hard copies, after the initial print run, can be made by emailing:  
Res.reports@english-heritage.org.uk  
or by writing to:*

*English Heritage, Fort Cumberland, Fort Cumberland Road, Eastney, Portsmouth PO4 9LD  
Please note that a charge will be made to cover printing and postage.*

## **SUMMARY**

Caesium magnetometer and Ground Penetrating Radar (GPR) surveys were conducted over an irregular curvilinear enclosure on the top of Kitridding Hill, Lupton, Cumbria, recorded through the initial aerial photographic phase of the National Archaeological Identification Surveys: Upland Pilot (RASMS 6304). It was hoped that additional magnetic and GPR survey might enhance the archaeological record of the site, as the interior earthworks were in places indistinct and it is possible that the enclosure represents part of a wider complex of archaeological activity. A vehicle-towed, caesium magnetometer array was used to cover the earthworks (2.3ha) whilst the GPR was focused on a smaller area (1.0ha) of the interior to test the suitability of this technique at the site. The magnetic survey revealed a symmetric 'shield shaped' form to the enclosure and suggests further interior activity corroborated by the GPR results.

## **CONTRIBUTORS**

The field work was conducted by Neil Linford, Paul Linford and Andy Payne from the English Heritage Geophysics Team. Ian Hardwick, a Heritage Environment Placement working within the above team, contributed to the interpretation of the geophysical data, figure preparation and the writing of this report.

## **ACKNOWLEDGEMENTS**

The authors wish to express their thanks to the land owner, Mr Jon Eskholme, for permission in granting access to his land to allow the survey to take place.

## **ARCHIVE LOCATION**

Fort Cumberland.

## **DATE OF FIELDWORK AND REPORT**

The fieldwork was conducted between 24<sup>th</sup> to 25<sup>th</sup> July 2013. The report was completed on 19<sup>th</sup> December 2013. The cover shows a view of the caesium magnetometer survey in progress.

## **CONTACT DETAILS**

Geophysics Team, English Heritage, Fort Cumberland, Fort Cumberland Road, Eastney, Portsmouth, PO4 9LD.

Dr Neil Linford; tel. 02392 856761; email [neil.linford@english-heritage.org.uk](mailto:neil.linford@english-heritage.org.uk)

# CONTENTS

Introduction .....	1
Method .....	2
Magnetic survey .....	2
Ground Penetrating Radar survey .....	3
Results .....	4
Magnetic survey .....	4
General response.....	4
The curvilinear enclosure and associated activity.....	4
Ground Penetrating Radar (GPR) survey.....	5
Conclusion .....	6
List of enclosed figures .....	7
References.....	8

## INTRODUCTION

Caesium magnetometer and Ground Penetrating Radar (GPR) surveys were conducted on the top of Kitridding Hill, Lupton, Cumbria, over a teardrop shaped enclosure recorded as an earthwork (NGR SD 583843, NRHE Monument HOB UID 43113, Figure 1) during the Upland pilot of the National Archaeological Identification Survey (NAIS) programme (NAIS Upland, Lakes and Dales; NHPP Project Number 3A4.312, RaSMIS 6304). The NAIS Upland pilot project covers the Arnsdale & Silverdale AONB together with parts of the proposed extensions to the Yorkshire Dales and Lake District National Parks, and aims to improve both the understanding of known sites and also include areas where the current archaeological record is sparse (Oakey 2013). The results of the project will directly feed into the management of these protected landscapes.

Geophysical survey was included in the project to complement the initial aerial investigation on selected sites in the Lune Valley, where ground-based methods could potentially enhance the assessment of the archaeological evidence (Linford *et al* 2013a, 2013b, 2013c). The site on the eastern side of Kitridding Hill was one of the main earthwork features identified from the aerial photography, appearing as a curvilinear defended enclosure of probable prehistoric origin defined by a ditch with both inner and outer banks for much of its perimeter, which form a 'teardrop' shape in plan. Several internal earthwork scoops or platforms were identified as potential hut sites or sub-enclosures, while external linear banks extending from the south-east appear less well defined than at the similar site at Castle Hill (NRHE Monument HOB UID 43942), perhaps due to a greater degree of land improvement at Kitridding. The aim of the geophysical survey was to elucidate any further evidence of internal, defensive and external activity to enhance the existing data and strengthen the case for designation.

The main enclosure earthworks are situated on a low saddle on the eastern side of Kitridding Hill, to the west of the Lune valley commanding views to the edge of the Pennines to the east, and down tributary valleys of the Lune and a routeway to the south-east. This, no doubt, partly explains the location of the enclosure, although a higher summit to the north-west overlooks it, possibly suggesting it was not predominantly defensive in function. The site is situated on Silurian Kirkby Moor Formation siltstone solid geology overlain by slowly permeable, seasonally waterlogged, fine silty and clayey soils of the 713d Cegin association (Soil Survey of England and Wales 1983; British Geological Survey (NERC) 2013). No superficial geology is mapped in the area, although local soil variation is possible due to topography and several small southward-flowing streams that pass through the enclosure promoting growth of some marginal vegetation. At the time of the survey the site was down to grass and weather conditions during the field work were warm, dry and sunny throughout.





*Figure 1. The Kitriding curvilinear enclosure, defined as an earthwork composed of ditch and banks in the centre of the aerial photograph, situated on an east-facing spur of Kitriding Hill. North is to the bottom right of the image (28366/17 11-DEC-2012 © English Heritage).*

## METHOD

### Magnetic survey

The magnetometer data was collected along the instrument swaths shown on Figure 2 using an array of six high sensitivity Geometrics G862 caesium vapour magnetometer sensors mounted on a non-magnetic sledge. This sledge was towed behind a low impact, all-terrain vehicle (ATV) which also provided the power supply and housed the data logging electronics. Five of the sensors were mounted in a linear array transverse to the direction of travel 0.5m apart and, vertically, ~0.2m above the ground surface. The sixth was fixed 1.0m directly above the central magnetometer in the array to act as a gradient sensor. The sensors were set to sample at a rate of 16Hz based on the typical average travel speed of the ATV (3.2m/s) giving a sampling density of ~0.2m by 0.5m along successive swaths. Each swath was separated from the last by approximately 2.5m, navigation and positional control being achieved using a Trimble 4700 series GPS receiver mounted on the sensor platform 1.75m in front of the central sensor. Sensor output and

survey location was monitored during acquisition to ensure data quality and minimise the risk of gaps in the coverage due to the use of a grid-less system.

After data collection the corresponding readings from the gradient sensor were subtracted from the measurements made by the other five magnetometers to remove any transient magnetic field effects caused by the towing ATV. The median value of each instrument traverse was then adjusted to zero by subtracting a running median value calculated over a 60m 1D window. This operation corrects for slight biases added to the measurements owing to the diurnal variation of the Earth's magnetic field and any slight directional sensitivity of the sensors. A linear greyscale image of the combined magnetic data is shown superimposed over the base Ordnance Survey (OS) mapping on Figure 3 and minimally processed versions of the range truncated data ( $\pm 50\text{nT}$ ) are shown as a traceplot and linear greyscale image in Figures 5 and 6 respectively.

## Ground Penetrating Radar survey

The Ground Penetrating Radar (GPR) data was collected along the instrument swaths shown on Figure 2 using Sensors and Software Pulse Ekko PE1000 console with a 450MHz centre frequency ground coupled antenna, to record reflections through a 50ns window. The antenna was mounted in small sledge towed behind an ATV together with a Trimble 4700 series GPS receiver to provide positional data. Individual GPR traces were collected at 0.05m intervals along profiles separated by approximately 0.5m, although the cross-line spacing was varied due to the topography and vegetation cover at the site.

Post acquisition processing involved the adjustment of time-zero to coincide with the true ground surface, background and noise removal, and the application of a suitable gain function to enhance late arrivals. Representative profiles from the GPR survey are shown on Figures 7, 8 and 9. An average sub-surface velocity of 0.0626m/ns was assumed following constant velocity tests on the data, and was used for the migration velocity field, the time to estimated depth conversion and the static topographic correction applied to the profiles on Figures 7, 8 and 9. In addition, owing to antenna coupling between the GPR transmitter and the ground to an approximate depth of  $\lambda/2$ , very near-surface reflection events should only be detectable below a depth of 0.07m if a centre frequency of 450MHz and a velocity of 0.0626m/ns are assumed. However, the broad bandwidth of an impulse GPR signal results in a range of frequencies to either side of the centre frequency which, in practice, will record significant near-surface reflections closer to the ground surface. Such reflections are often emphasised by presenting the data as amplitude time slices. In this case, the time slices were created from the entire data set, after applying a 2D-migration algorithm, by averaging data within successive 2ns (two-way travel time) windows (Linford 2004). Each resulting time slice, illustrated as a greyscale image in Figure 10 represents the variation of reflection strength through successive 0.06m intervals from the ground surface. A single time slice from between 6 and 8ns (0.18 to 0.24m) is shown superimposed over the base OS mapping on Figure 4.



## RESULTS

### Magnetic survey

A graphical summary of the significant magnetic anomalies, [m1-25], discussed in the following text, superimposed on the base OS map data, is provided in Figure 11.

### General response

The magnitude of response at the site is relatively weak and shows some amorphous areas of disturbance [m1], perhaps due to outcrops or glacially transported deposits of more magnetic igneous or metamorphic rock. Three linear anomalies [m2-4], found in a slight valley on the hill slope, may also reflect geological or geomorphological processes, although a more significant relationship to the enclosure can not be entirely dismissed. Despite the influence of the background geology significant archaeological anomalies are discernible within the data.

### The curvilinear enclosure and associated activity

The enclosure earthworks, initially identified from aerial photography appear as concentric, near symmetrical curvilinear negative [m5], and positive magnetic anomalies [m6-9], forming the overall shape of a 'shield'. Whilst the magnetic anomalies [m5-9] reflect the earthwork evidence (Figures 1 and 13(A)) of a perimeter ditch with external and internal banks, the geophysical response suggests a more regular and symmetrical form with the ditch having a sharply angled corner at the north-west as well as at the north-east. The interior bank is apparent only on the south-eastern edge [m7].

Within the enclosure linear anomalies [m10-12] respect the shape of the outer ditches and may represent further internal sub-division. The negative anomaly at [m13] appears to run between [m7] and [m10], but it is a much weaker response so its interpretation is less clear. Two almost circular negative anomalies [m14] and [m15] are likely to be internal enclosures, possibly for stock management. Smaller curvilinear anomalies [m16-19] and a slightly weaker response at [m20] are, perhaps, more likely to represent hut circles or smaller internal enclosures.

A small, rectilinear, positive response [m21] may also be suggestive of a similar settlement function to [m16-20] that appear, at least in part, to respect visible earthwork platforms. However, some of the larger magnetic anomalies, such as [m12], and the potential hut circles [m16-20], do not correlate completely with the aerial photography (*cf* Figure 13(A)).

Beyond the main earthworks [m22] and [m23] possibly represent additional enclosures, although this interpretation is more tentative due to the lower magnitude of response

exhibited by these anomalies. Further, weak linear anomalies [m24] and [m25], could be indicative of former land divisions or be associated with either [m23] or the extant ridge and furrow identified from the aerial photography (Figure 13).

## Ground Penetrating Radar (GPR) survey

A graphical summary of the significant GPR anomalies, [gpr1-16], discussed in the following text, superimposed on the base OS map data, is provided in Figure 12.

Uneven topography together with a variable density of vegetation over the site has led to some problems maintaining ground coupling with the antenna, but this does not appear to have unduly influenced the integrity of the results and signal penetration extends through a two-way travel time window of at least 40ns.

The response to the main enclosure earthworks is replicated in the GPR data as a series of high amplitude reflections [gpr1-7] from between 4 and 42ns (0.12 to 1.26m). These anomalies are, in part, more complex than the corresponding magnetic data [m6-11] showing a double response to the north [gpr1-4] with an apparent entrance gap at [gpr8], resolving to a single curvilinear reflection [gpr3 and 7] from 14ns (0.42m) onwards. Comparison between the extant earthworks and the GPR profiles suggests the topography has produced high amplitude anomalies over the double banks to the N and that the deeper response [gpr3 and 7] corresponds more directly to the lower lying ditch (cf Figures 7 and 13). The course of the ditch does not appear to be entirely represented by surface topographic expression, perhaps explaining the slight variation in the shape of the enclosure between the geophysical results and the aerial photography (eg [gpr5] on Figure 8).

The near-surface data reveals some apparent internal detail, also partially resolved by the magnetic survey, including a pattern of cellular internal divisions [gpr9] and series of more complex, discrete anomalies [gpr10-13] that correspond with extant platforms and depressions. Interpretation of the discrete anomalies is complicated, although some settlement function, such as hut circles or small stock enclosures seems possible. One of the anomalies [gpr13] is clearly defined as a low amplitude, rectilinear response 9m x 9m between 4 and 10ns (0.12 to 0.3m), although a more recent origin perhaps a lined pond to water stock should also be considered. Deeper lying reflectors [gpr14-16] from 24ns (0.72m) onwards are more diffuse and do not, necessarily correlate with the expression of the earthworks. One of these [gpr15] does follow an arc that respects the northern boundary of the enclosure, although it is difficult to ascertain whether this represents an earlier phase of the monument or an underlying geological structure.

## CONCLUSION

Despite challenging surface conditions and relatively weak magnetic response geophysical survey has successfully provided useful results to elucidate the aerial mapping. In particular, the course of the enclosure ditch and bank, although less complete in the geophysical coverage, confirms an apparently more geometrical 'shield' shaped form, only partly described by the earthworks. A possible interruption in the north-west corner of the enclosure is suggested by the earthworks, although the bank and ditch are poorly preserved at this point, and appears as a more continuous ditch-type magnetic anomaly, forming a sharp angle on the north-west corner, so a deliberate entrance here seems unlikely; whether there was an entrance gap on the west side is, however, less clear. Both the magnetic survey and the more limited GPR results provide additional evidence for internal sub-division and possible occupation activity within the enclosure. Whilst some of this activity is associated with visible platforms or other topographic variation, many significant geophysical anomalies have no apparent surface expression. Wider survey of the area immediately surrounding the enclosure was limited due to the severe topography of the hilltop location although some additional, perhaps geological, anomalies were recorded.

## LIST OF ENCLOSED FIGURES

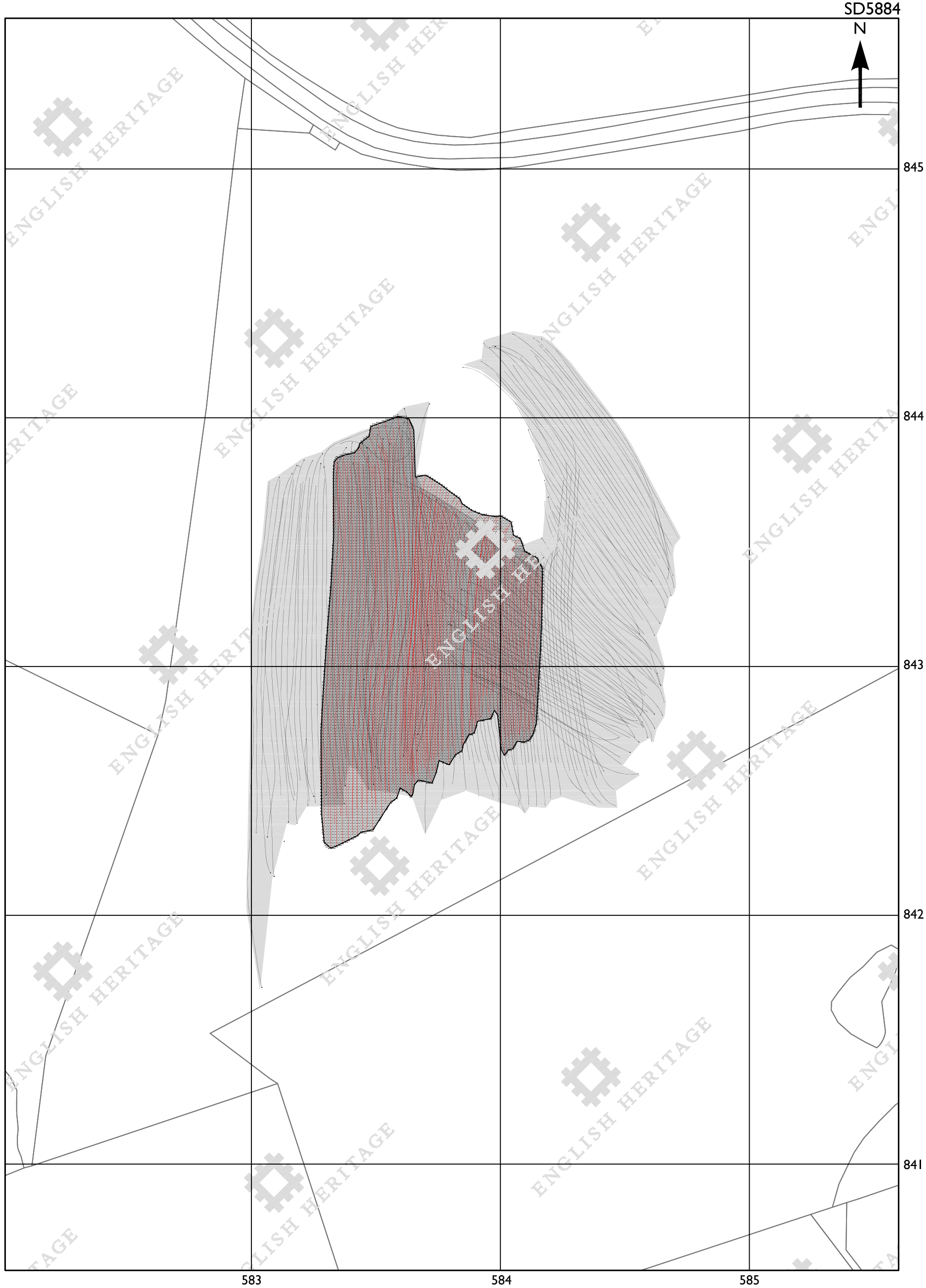
- Figure 1* Oblique aerial photograph of the Kitridding curvilinear enclosure, defined as an earthwork ditch and banks (NMR 28366/17 11-DEC-2012).
- Figure 2* Location of the geophysical survey instrument swaths, July 2013, superimposed over the base OS mapping data (1:1500).
- Figure 3* Location of the caesium magnetometer survey superimposed over the base OS mapping data (1:1500).
- Figure 4* Location of the GPR amplitude time slice between 6 and 8ns (0.18 to 0.24m) superimposed over the base OS mapping data (1:1500).
- Figure 5* Traceplot and greyscale image of the minimally processed caesium magnetometer data, alternate survey lines in the traceplot have been removed to improve clarity (1:1000).
- Figure 6* Linear greyscale image of the minimally processed caesium magnetometer data (1:1000).
- Figure 7* Selected GPR profile from Line0030 (see Figures 4 and 12 for location).
- Figure 8* Selected GPR profile from Line0045 (see Figures 4 and 12 for location).
- Figure 9* Selected GPR profile from Line0090 (see Figures 4 and 12 for location).
- Figure 10* GPR amplitude time slices between 0 and 42ns (0.0 to 1.2m) (1:2500).
- Figure 11* Graphical summary of significant magnetic anomalies superimposed over the base OS mapping (1:1500).
- Figure 12* Graphical summary of significant GPR anomalies superimposed over the base OS mapping (1:1500).
- Figure 13* Comparison between (A) significant magnetic and (B) GPR anomalies compared with the aerial mapping evidence superimposed over the base OS mapping (1:1500).

## REFERENCES

- British Geological Survey (NERC) 2013 OpenGeoscience, Geology of Britain, map viewer. Geological Survey of England and Wales 1892 One Inch Geology Map Series - Sheet 49 Kirkby Lonsdale. [web page]; <http://www.bgs.ac.uk/data/mapViewers/home.html>. [Accessed 22/11/2013].
- Linford, N 2004 'From Hypocaust to Hyperbola: Ground Penetrating Radar surveys over mainly Roman remains in the U.K.'. *Archaeological Prospection*, 11 (4), 237-246.
- Linford, N, Linford, P and Payne, A 2013a '*Lakes and Dales NAIS, Gowrey Farm, High Casterton, Cumbria. Report on Geophysical Survey, August 2013*'. English Heritage 57/2013.
- Linford, N, Linford, P and Payne, A 2013b '*Lakes and dales NAIS, Howerigg Settlement, Barbon, Cumbria. Report on Geophysical Survey, July 2013*'. English Heritage 58/2013.
- Linford, N, Linford, P and Payne, A 2013c '*Lakes and Dales NAIS, Millbeck Farm, Middleton, Cumbria. Report on Geophysical Survey, July 2013*'. English Heritage 55/2013.
- Oakey, M 2013 National Archaeological Identification Survey: Upland Pilot, NHPP Project Number 3A4.312, Project Design Main Stage, English Heritage, Heritage Protection & Planning Group, Heritage Protection Department.
- Soil Survey of England and Wales 1983 Soils of England and Wales: Sheet 1 - Northern England, 1:250,000 soil map. Harpenden, Lawes Agricultural Trust.

Figure 2

LAKES AND DALES NAIS, KITRIDDING HILL, LUPTON, CUMBRIA  
Location of geophysical surveys, July 2013



© Crown Copyright and database right  
2013. All rights reserved. Ordnance  
Survey Licence number 100019088.

0 90m

1:1500



magnetometer survey swaths

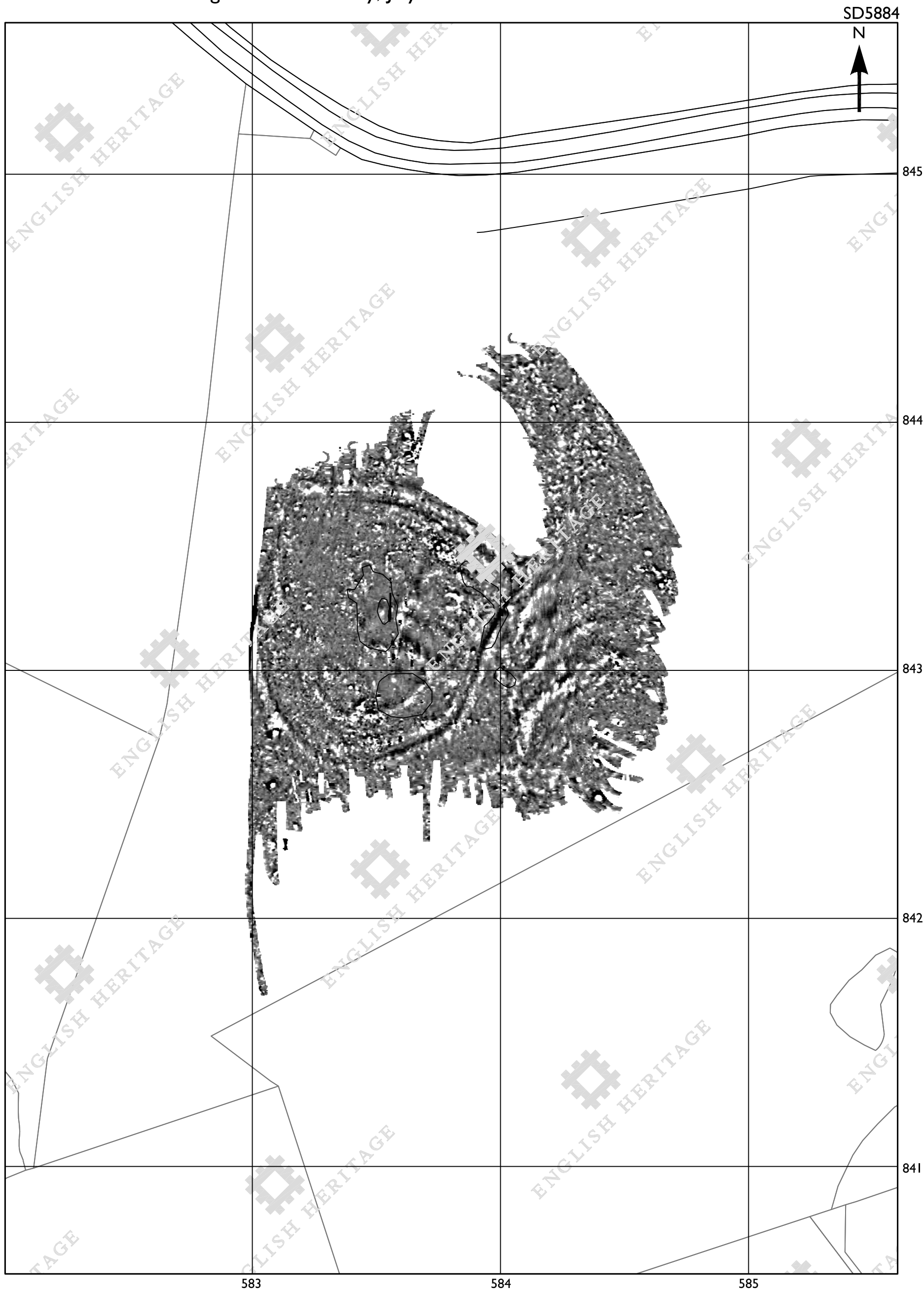


GPR survey swaths



ENGLISH HERITAGE

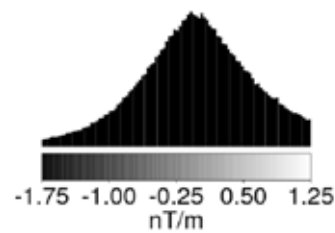
LAKES AND DALES NAIS, KITRIDDING HILL, LUPTON, CUMBRIA  
Location of caesium magnetometer survey, July 2013



© Crown Copyright and database right  
2013. All rights reserved. Ordnance  
Survey Licence number 100019088.

0 90m

1:1500

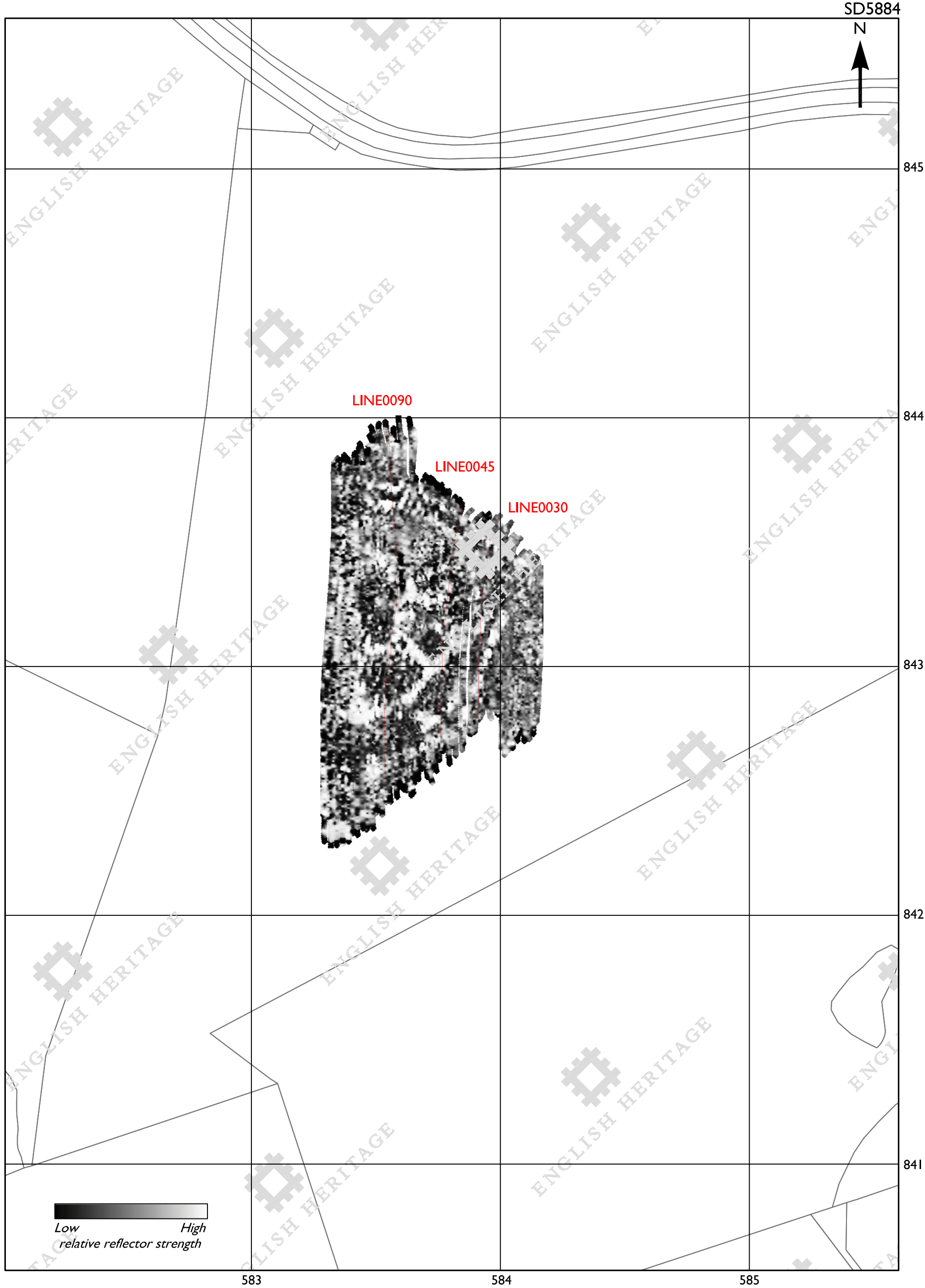


ENGLISH HERITAGE



Figure 4

LAKES AND DALES NAIS, KITRIDDING HILL, LUPTON, CUMBRIA  
Location of GPR amplitude time slice between 6 and 8ns (0.18 to 0.24m), July 2013



© Crown Copyright and database right  
2013. All rights reserved. Ordnance  
Survey Licence number 100019088.

location of GPR profile shown  
on Figures 7, 8 and 9

Figure 5

LAKES AND DALES NAIS, KITRIDDING HILL, LUPTON, CUMBRIA  
Caesium magnetometer survey, July 2013

Traceplot of minimally processed data



0 60m  
1:1000



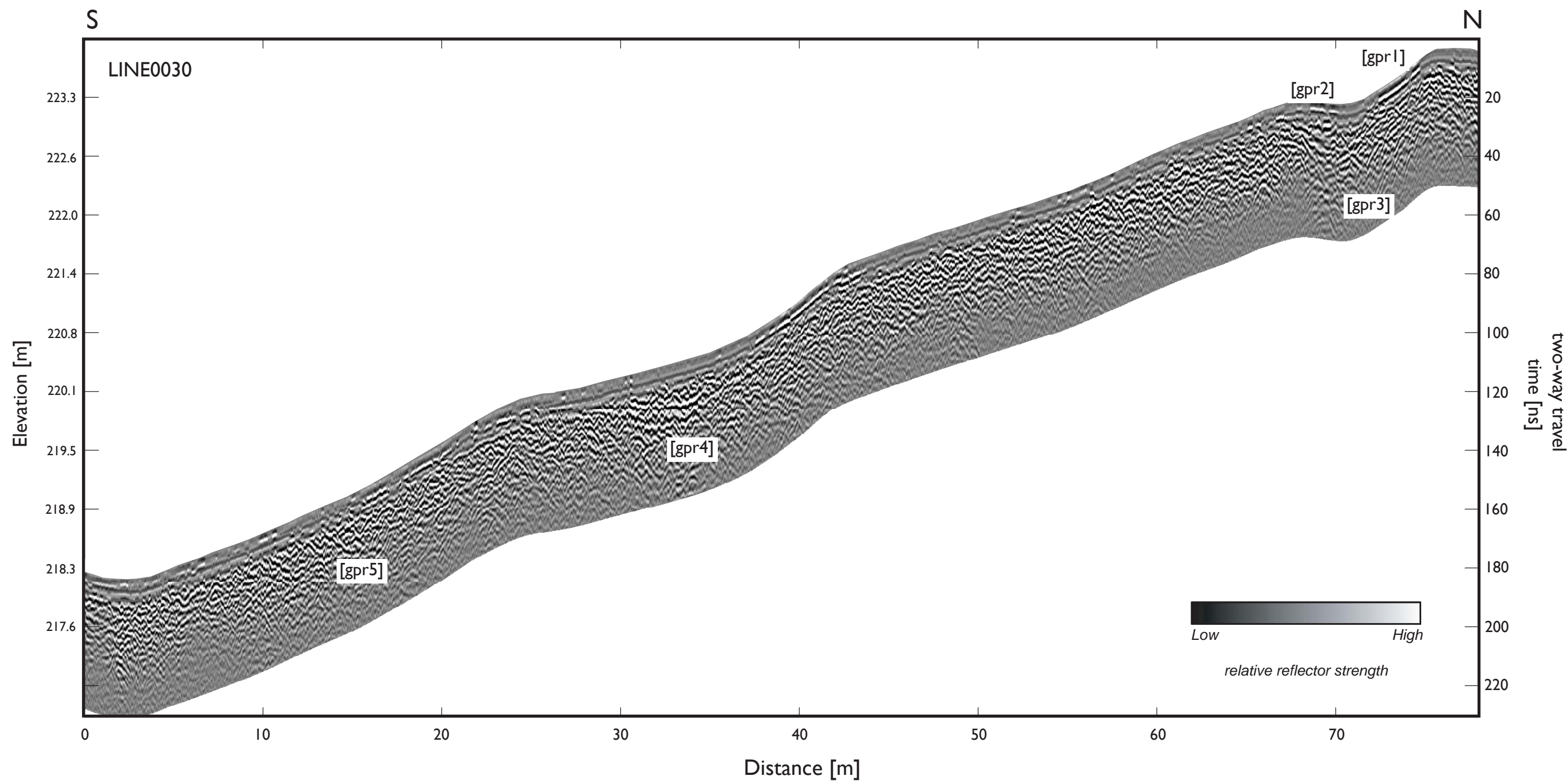
Figure 6

LAKES AND DALES NAIS, KITRIDDING HILL, LUPTON, CUMBRIA  
Caesium magnetometer survey, July 2013

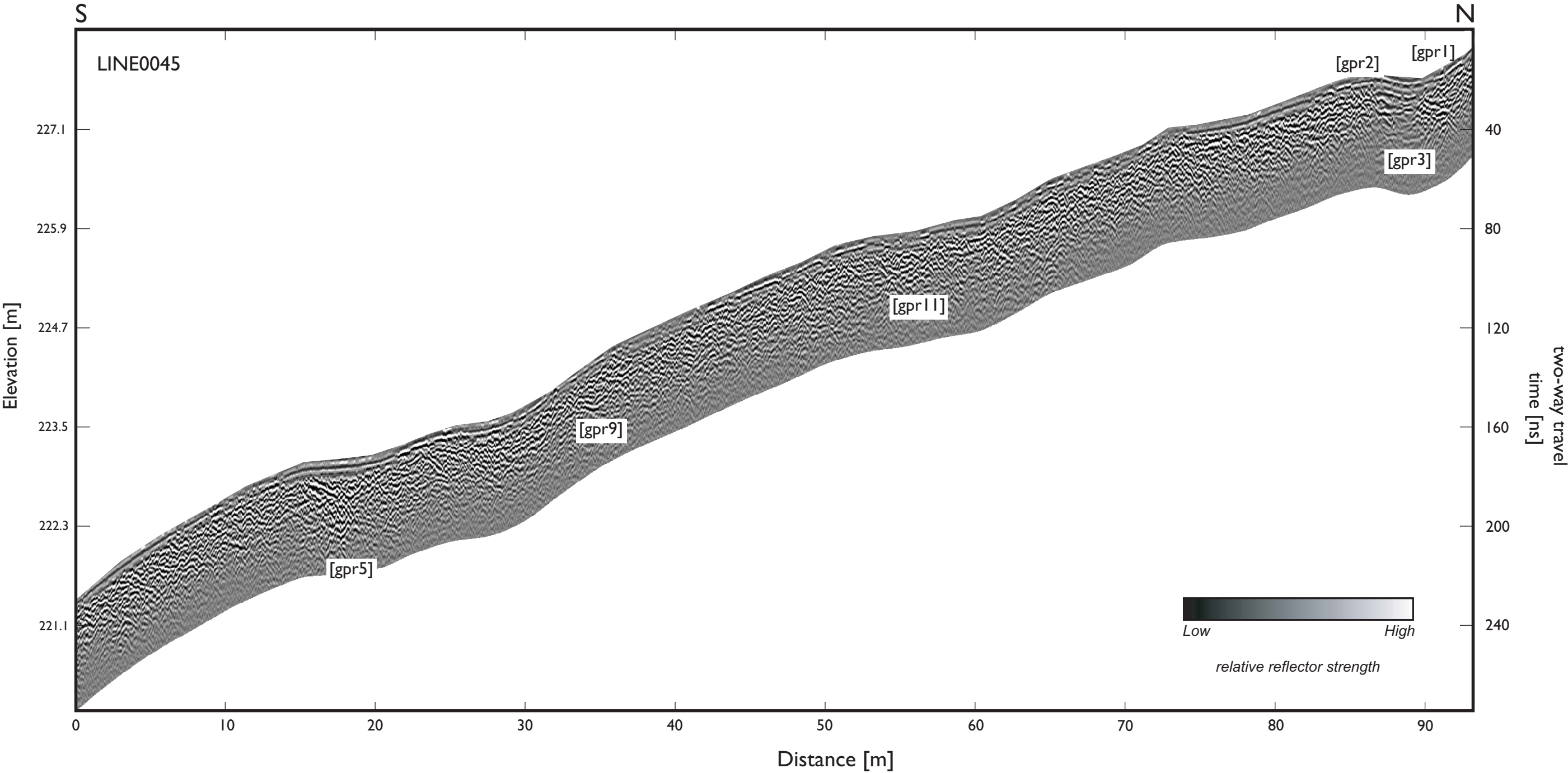
Linear greyscale image of minimally processed data

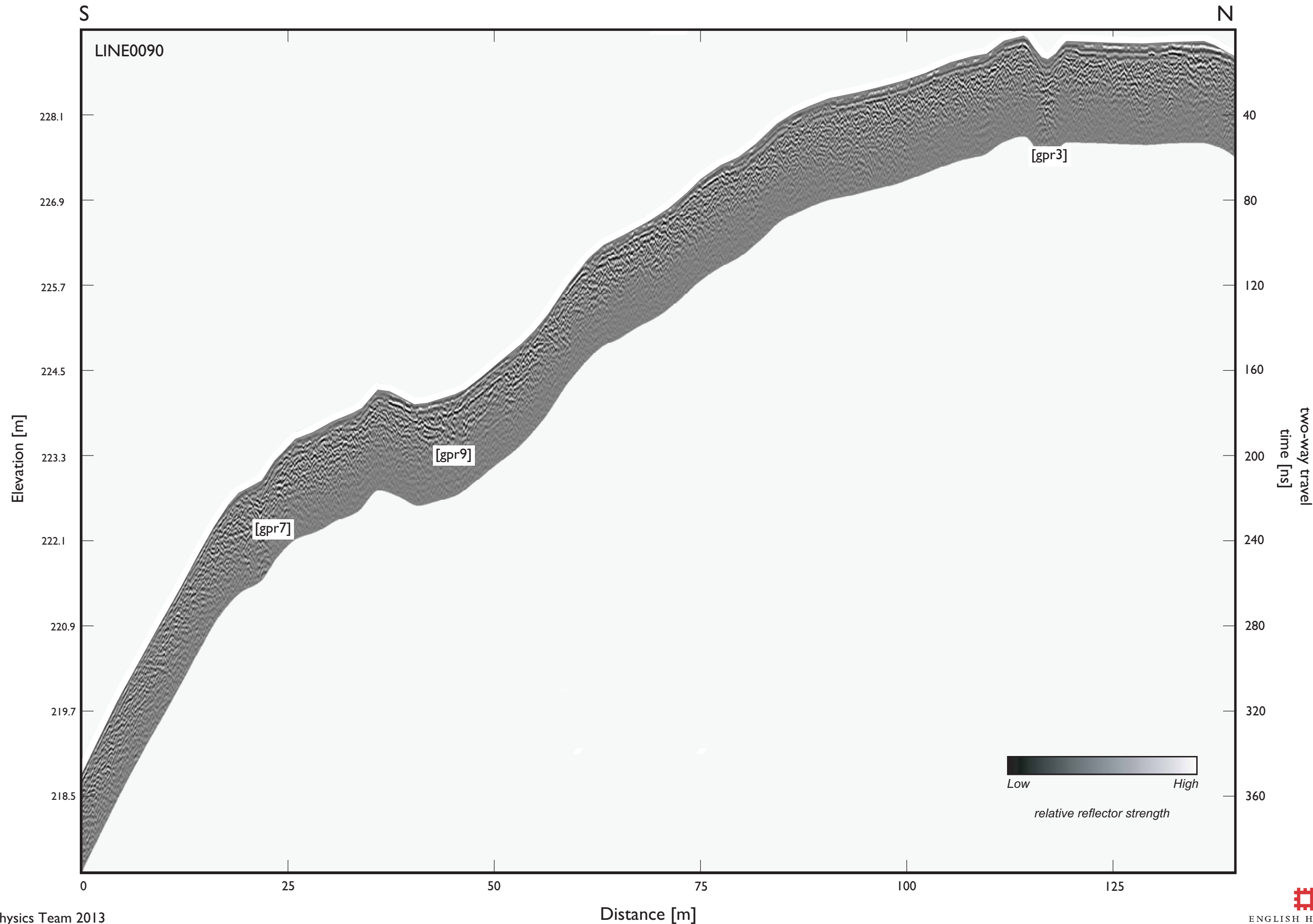


0 60m  
1:1000





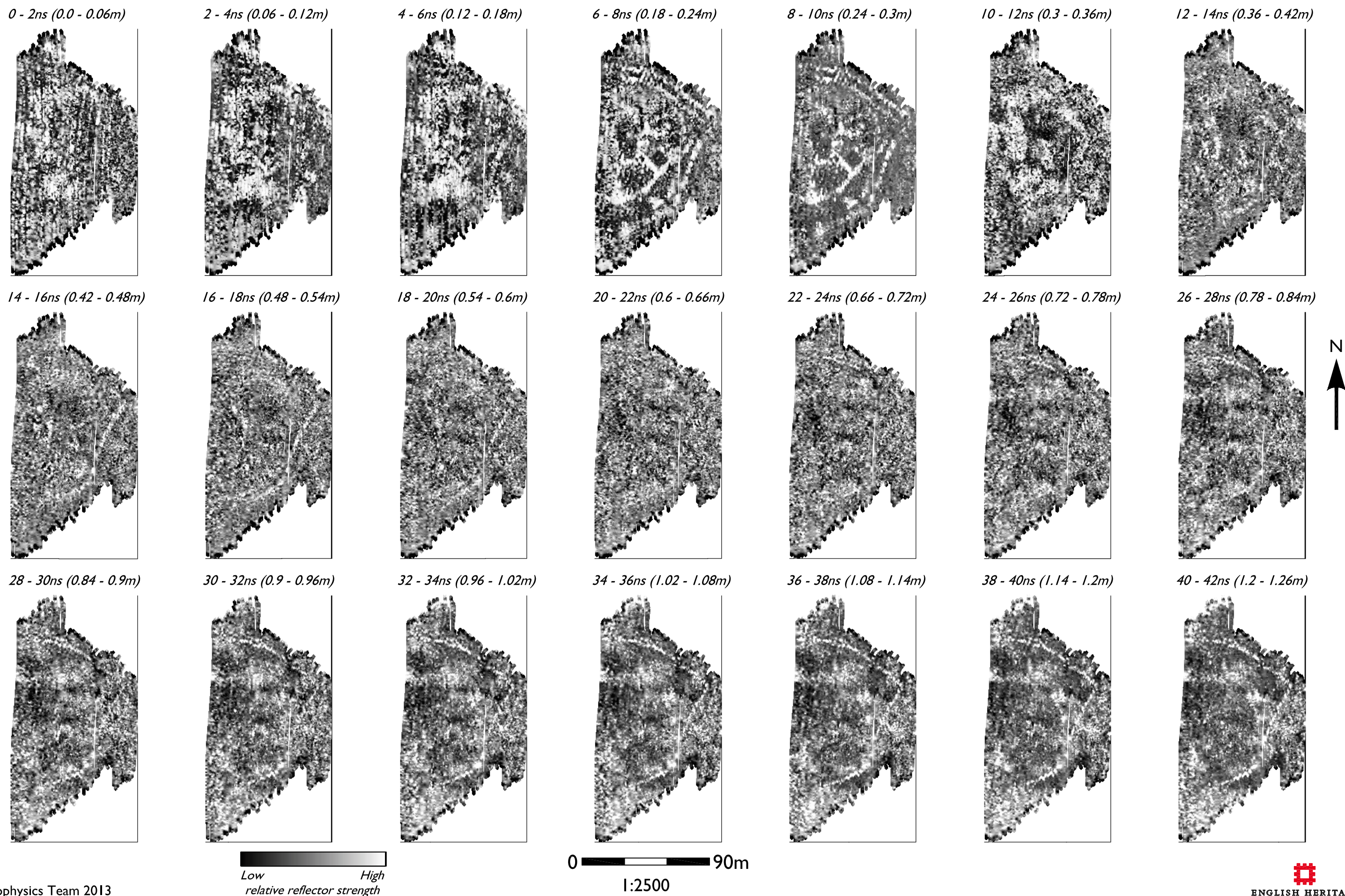






LAKES AND DALES NAIS, KITRIDDING HILL, LUPTON, CUMBRIA  
 GPR amplitude time slices from between 0.0 and 42ns (0 - 1.26m), July 2013

Figure 10





LAKES AND DALES NAIS, KITRIDDING HILL, LUPTON, CUMBRIA  
Graphical summary of significant magnetic anomalies, July 2013

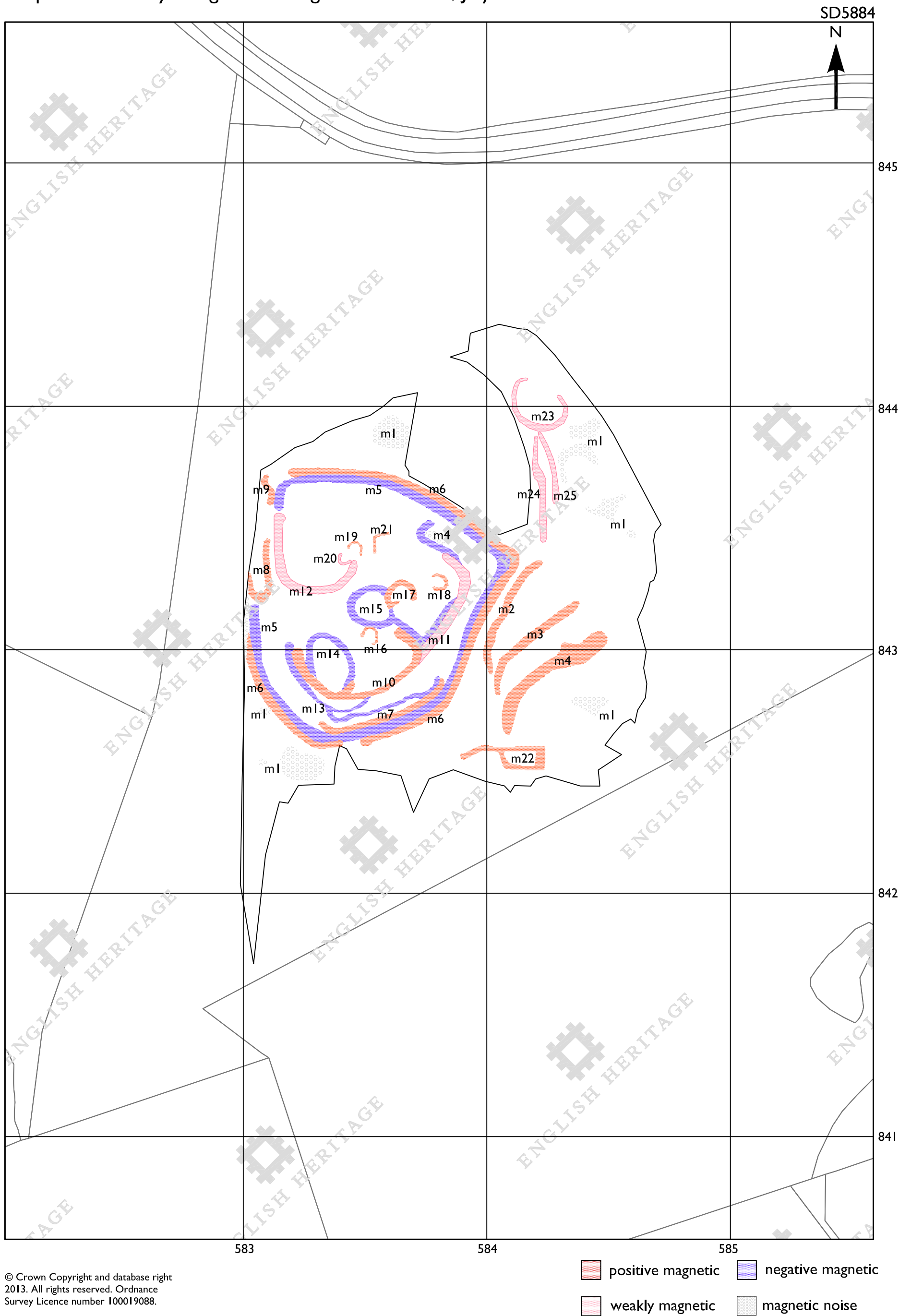


Figure I2

LAKES AND DALES NAIS, KITRIDDING HILL, LUPTON, CUMBRIA  
Graphical summary of significant GPR anomalies



© Crown Copyright and database right  
2013. All rights reserved. Ordnance  
Survey Licence number 100019088.

0 90m

1:1500

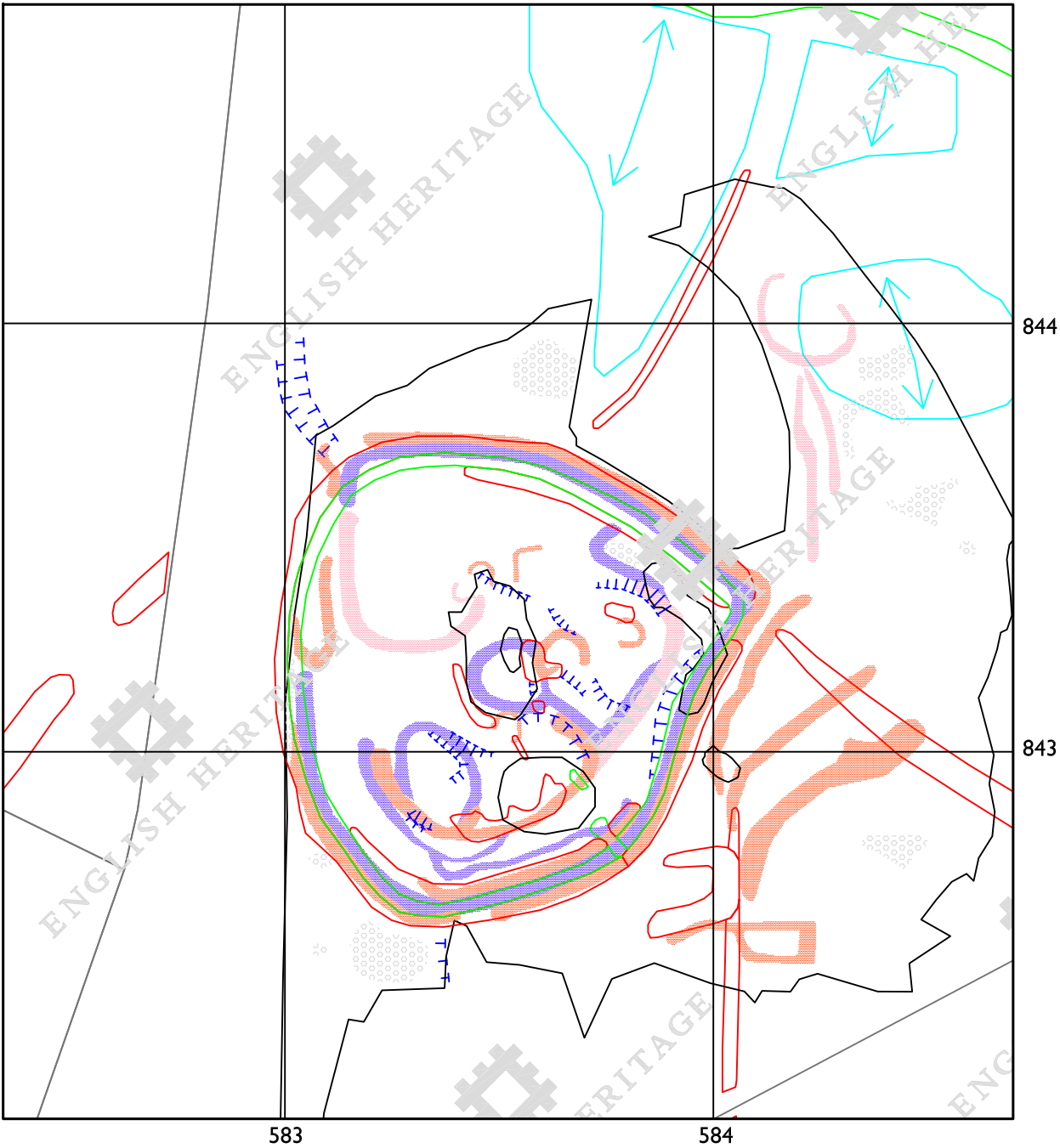
- low amplitude reflectors
- high amplitude reflectors



ENGLISH HERITAGE

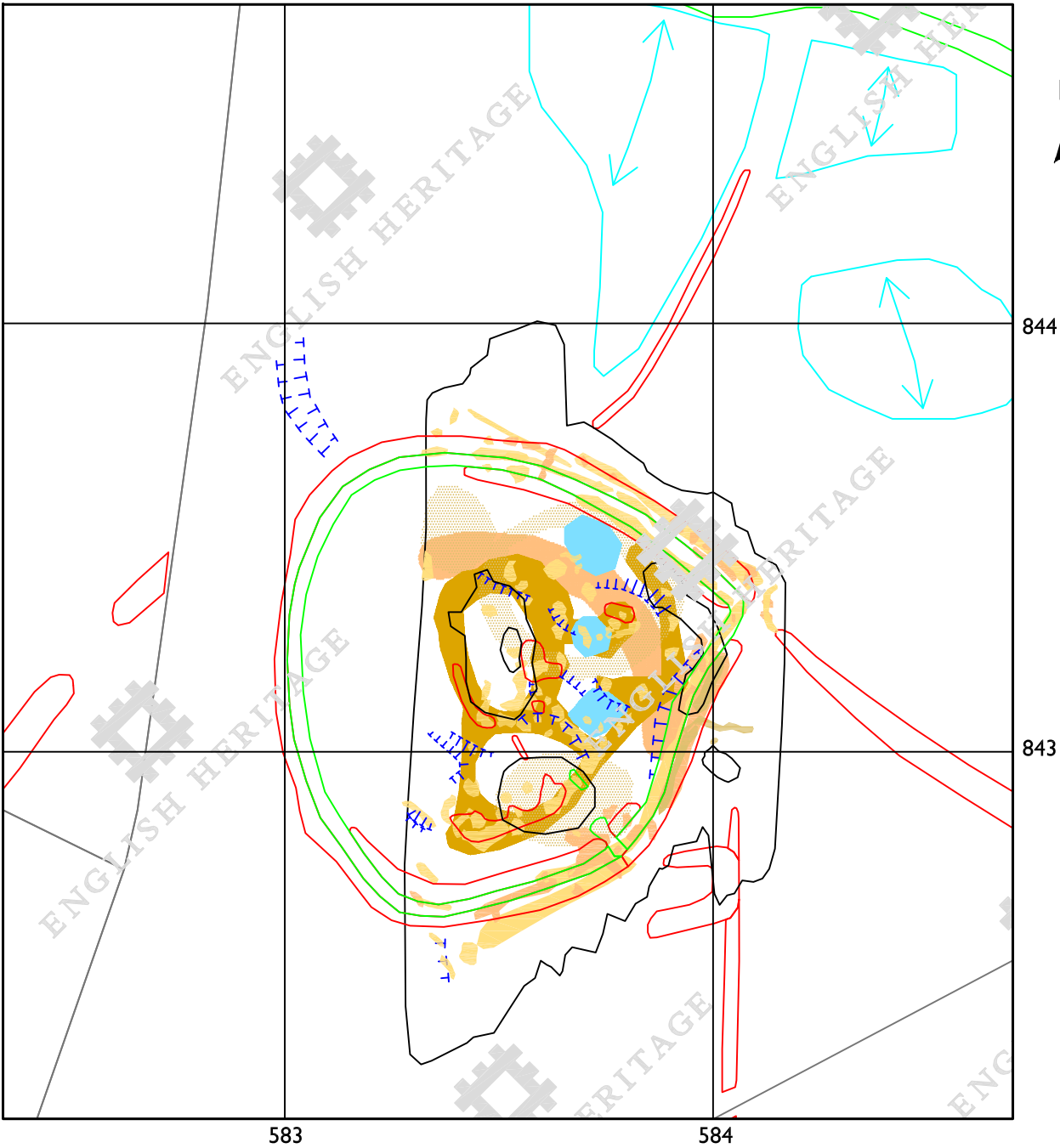
LAKES AND DALES NAIS, KITRIDDING HILL, LUPTON, CUMBRIA  
Comparison between the geophysical anomalies and aerial mapping evidence

(A) Significant magnetic anomalies



© Crown Copyright and database right  
2013. All rights reserved. Ordnance  
Survey Licence number 100019088.

(B) Significant GPR anomalies



© Crown Copyright and database right  
2013. All rights reserved. Ordnance  
Survey Licence number 100019088.

aerial mapping evidence  
rig and furrow area / alignment  
bank  
scarp  
ditch

0 90m  
1:1500



## ENGLISH HERITAGE RESEARCH AND THE HISTORIC ENVIRONMENT

English Heritage undertakes and commissions research into the historic environment, and the issues that affect its condition and survival, in order to provide the understanding necessary for informed policy and decision making, for the protection and sustainable management of the resource, and to promote the widest access, appreciation and enjoyment of our heritage. Much of this work is conceived and implemented in the context of the National Heritage Protection Plan. For more information on the NHPP please go to <http://www.english-heritage.org.uk/professional/protection/national-heritage-protection-plan/>.

The Heritage Protection Department provides English Heritage with this capacity in the fields of building history, archaeology, archaeological science, imaging and visualisation, landscape history, and remote sensing. It brings together four teams with complementary investigative, analytical and technical skills to provide integrated applied research expertise across the range of the historic environment. These are:

- \* Intervention and Analysis (including Archaeology Projects, Archives, Environmental Studies, Archaeological Conservation and Technology, and Scientific Dating)
- \* Assessment (including Archaeological and Architectural Investigation, the Blue Plaques Team and the Survey of London)
- \* Imaging and Visualisation (including Technical Survey, Graphics and Photography)
- \* Remote Sensing (including Mapping, Photogrammetry and Geophysics)

The Heritage Protection Department undertakes a wide range of investigative and analytical projects, and provides quality assurance and management support for externally-commissioned research. We aim for innovative work of the highest quality which will set agendas and standards for the historic environment sector. In support of this, and to build capacity and promote best practice in the sector, we also publish guidance and provide advice and training. We support community engagement and build this in to our projects and programmes wherever possible.

We make the results of our work available through the Research Report Series, and through journal publications and monographs. Our newsletter *Research News*, which appears twice a year, aims to keep our partners within and outside English Heritage up-to-date with our projects and activities.

A full list of Research Reports, with abstracts and information on how to obtain copies, may be found on [www.english-heritage.org.uk/researchreports](http://www.english-heritage.org.uk/researchreports)

*For further information visit [www.english-heritage.org.uk](http://www.english-heritage.org.uk)*

