

# WARREN HOUSE, WARREN SPINNEY, KIMBOLTON, CAMBRIDGESHIRE TREE-RING ANALYSIS OF OAK TIMBERS

## SCIENTIFIC DATING REPORT

Martin Bridge



Research Department Report Series 34-2011

**WARREN HOUSE, WARREN SPINNEY  
KIMBOLTON, CAMBRIDGESHIRE**

**TREE-RING ANALYSIS OF OAK TIMBERS**

Martin Bridge

NGR: TL 1068 6835

© English Heritage

ISSN 1749-8775

*The Research Department Report Series incorporates reports from all the specialist teams within the English Heritage Research Department: Archaeological Science; Archaeological Archives; Historic Interiors Research and Conservation; Archaeological Projects; Aerial Survey and Investigation; Archaeological Survey and Investigation; Architectural Investigation; Imaging, Graphics and Survey, and the Survey of London. It replaces the former Centre for Archaeology Reports Series, the Archaeological Investigation Report Series and the Architectural Investigation Report Series.*

*Many of these are interim reports which make available the results of specialist investigations in advance of full publication. They are not usually subject to external refereeing, and their conclusions may sometimes have to be modified in the light of information not available at the time of the investigation. Where no final project report is available, readers must consult the author before citing these reports in any publication. Opinions expressed in Research Department reports are those of the author(s) and are not necessarily those of English Heritage.*

*Requests for further hard copies, after the initial print run, can be made by emailing:*

*Res.reports@english-heritage.org.uk*

*or by writing to:*

*English Heritage, Fort Cumberland, Fort Cumberland Road, Eastney, Portsmouth PO4 9LD*

*Please note that a charge will be made to cover printing and postage.*

## **SUMMARY**

A total of six samples from the original timber-frame were measured. Three exhibited similarities, including one exceptionally narrow ring, and hence were combined to make a site sequence. Neither this, nor any of the other measured individual sequences gave acceptable consistent matches with dated reference material, and the site therefore remains undated.

## **CONTRIBUTOR**

Dr M C Bridge

## **ACKNOWLEDGEMENTS**

The sampling and analysis of these timbers was funded by English Heritage (EH), and requested by Ian Harper (EH Historic Buildings Architect). The work was commissioned by Dr Peter Marshall (EH Scientific Dating Team). I am grateful to Jaideep Chakrabarti (Caroe Architecture) for arranging access, accompanying me on site, and supplying drawings. Cathy Tyers (Sheffield University) and Peter Marshall (EH) are thanked for their comments on an earlier draft of this report.

## **ARCHIVE LOCATION**

Cambridgeshire HER, Cambridgeshire Archaeology, CC 1008, Shire Hall, Cambridge, Cambridgeshire, CB3 0AP

## **DATE OF INVESTIGATION**

2010

## **CONTACT DETAILS**

Dr M C Bridge

UCL Institute of Archaeology, 31–34 Gordon Square, London WC1H 0PY

E-mail: [martin.bridge@ucl.ac.uk](mailto:martin.bridge@ucl.ac.uk)

## CONTENTS

Introduction.....	1
Methodology.....	1
Ascribing felling dates and date ranges.....	2
Results and Discussion.....	3
Bibliography.....	4

## INTRODUCTION

Warren House is set in a remote location about 1 km north east of Kimbolton (Fig 1). Now a ruin, it is thought to have been built as a sixteenth-century timber-framed cottage that was later clad in brick and stone to become a late eighteenth-century 'vista' building facing Kimbolton Park. The property is on the Heritage at Risk Register but grant-aided repairs are underway to secure its immediate future as a Landmark Trust holiday home. Dendrochronological investigation of the scant remains of the timber framing was requested to inform these repairs. Initial surveys by Colin Briden for the Landmark Trust suggested that the framing was basically mostly from the primary construction, but the east purlin on the south pitch and a long oak plate in the south wall were both thought to be later timbers introduced to the building.

## METHODOLOGY

The timbers were assessed and sampling was carried out in December 2010. Cores were taken from *in-situ* timbers using a 15mm auger attached to an electric drill. The cores were glued to wooden laths, labelled, and stored for subsequent analysis.

The cores were polished on a belt sander using 80 to 400 grit abrasive paper to allow the ring boundaries to be clearly distinguished. The samples had their tree-ring sequences measured to an accuracy of 0.01 mm, using a specially constructed system utilising a binocular microscope with the sample mounted on a travelling stage with a linear transducer linked to a PC, which recorded the ring widths into a dataset. The software used in measuring and subsequent analysis was written by Ian Tyers (2004). Cross-matching was attempted by a combination of visual matching and a process of qualified statistical comparison by computer. The ring-width series were compared for statistical cross-matching, using a variant of the Belfast CROS program (Baillie and Pilcher 1973). Ring sequences were plotted to allow visual comparisons to be made between sequences. This method provides a measure of quality control in identifying any potential errors in the measurements when the samples cross-match.

In comparing one sample or site master against other samples or chronologies, *t*-values over 3.5 are considered significant, although in reality it is common to find demonstrably spurious *t*-values of 4 and 5 because more than one matching position is indicated. For this reason, dendrochronologists prefer to see some *t*-value ranges of 5, 6, and higher, and for these to be well replicated from different, independent chronologies with both local and regional chronologies well represented, except where imported timbers are identified. Where two individual samples match together with a *t*-value of 10 or above, and visually exhibit exceptionally similar ring patterns, they may have originated from the same parent tree. Same-tree matches can also be identified through the external characteristics of the timber itself, such as knots and shake patterns. Lower *t*-values however do not preclude same tree derivation.

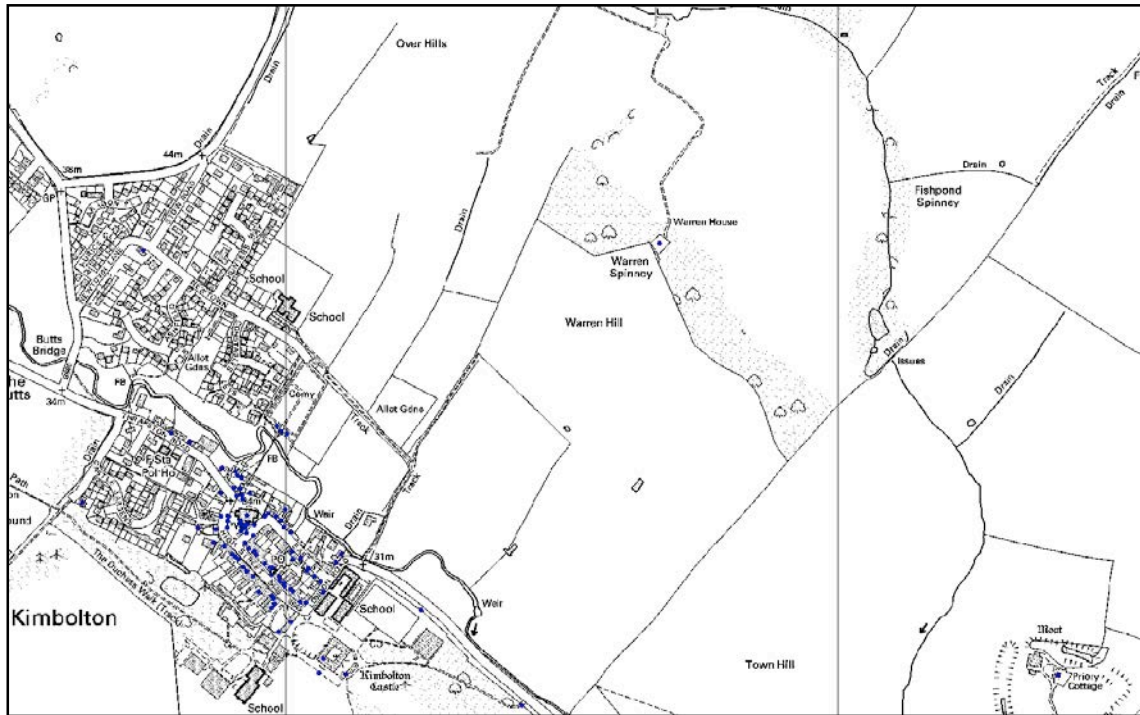


Figure 1. Map to show the location of Warren House (based on the Ordnance Survey map with permission of the Controller of Her Majesty's Stationery Office, ©Crown Copyright)

### Ascribing felling dates and date ranges

Once a tree-ring sequence has been firmly dated in time, a felling date, or date range, is ascribed where possible. With samples which have sapwood complete to the underside of, or including bark, this process is relatively straightforward. Depending on the completeness of the final ring (ie if it has only the spring vessels or early wood formed, or the latewood or summer growth), a precise felling date and season can be given. If the sapwood is partially missing, or if only a heartwood/sapwood transition boundary survives, then an estimated felling date range can be given for each sample. The number of sapwood rings can be estimated by using an empirically derived sapwood estimate with a given confidence limit. If no sapwood or heartwood/sapwood boundary survives then the minimum number of sapwood rings from the appropriate sapwood estimate is added to the last measured ring to give a *terminus post quem* (*tpq*) or felled-after date.

A review of the geographical distribution of dated sapwood data from historic timbers has shown that a sapwood estimate relevant to the region of origin should be used in interpretation, which in this area is 9–41 rings (Miles 1997). It must be emphasised that dendrochronology can only date when a tree has been felled. Further interpretation is required to determine a likely construction date for the structure or object under study.

## RESULTS AND DISCUSSION

Basic information about the samples taken is presented in Table 1, and illustrated in Figures 3–7. Both the east purlin on the south pitch, and the long oak plate in the south wall were assessed as having too few rings, and so not likely to be suitable for further analysis. Therefore, they were not sampled. The large ground-floor ceiling beam was not thought to be original to the main structure, but was sampled in the hope of gaining more information about the development of the building. It could not be easily assessed because of surface paint and other deposits, but it too turned out to have too few rings for further analysis. Thus none of the later insertions were suitable for analysis.

The south principal rafter of the central truss also turned out to contain fewer rings than required for dendrochronology. The north principal rafter was thought to have been derived from the same parent tree, and this was not therefore sampled.

The six samples that were subsequently measured are all thought to represent timbers from the primary framing. Three of these, 07, 04, and 01, produced relatively low but consistent cross-matching (Table 2). It was notable that all three sequences exhibited one very narrow ring (Fig 2). These sequences were combined at their relative positions of overlap to form a site master sequence kwh741m. The values for this sequence are given in the Appendix. Neither this, nor any of the individual sequences, gave acceptable consistent matches with dated reference material, and all the timbers therefore remain undated.

**Table 1. Details of the samples taken for dendrochronology**

Sample	Description	Rings	Sapwood	Mean ring-width (mm)
kwh01	Mid-rail, north side of east wall	58	-	2.04
kwh02	Mid-rail, north side of west wall	93	26¼C	1.00
kwh03	South-west corner post	77	-	2.04
kwh04	Collar to central truss	62	26C	1.41
kwh05	South principal rafter, central truss	<40	-	NM
kwh06	Tie in east wall	70	-	1.21
kwh07	South wallplate	61	-	1.56
kwh08	West-East ground floor ceiling beam	<40	h/s	NM

h/s = heartwood-sapwood boundary; NM = not measured; C = complete sapwood, winter felled; ¼C = complete sapwood, felled the following winter

**Table 2. Cross-matching between the three samples with an exceptional narrow ring**

<i>t-values</i>		
SAMPLE	kwh04	kwh01
kwh07	3.0	5.0
kwh04		4.1

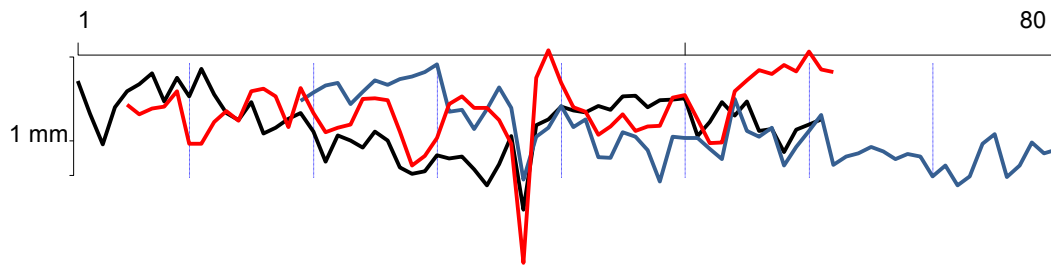


Figure 2. Plots of the three samples (07, 01, and 04) with one exceptionally narrow ring in their sequences shown aligned. Note, the y-axis is ring width in mm on a logarithmic scale

## BIBLIOGRAPHY

Baillie, M G L, and Pilcher, J R, 1973 A simple cross-dating program for tree-ring research, *Tree Ring Bulletin*, **33**, 7–14

Miles, D H, 1997 The interpretation, presentation, and use of tree-ring dates, *Vernacular Architect*, **28**, 40–56

Tyers, I, 2004 *Dendro for Windows Program Guide 3rd edn*, ARCUS Report, **500b**





Figure 3. Photograph of the interior without scaffold in place, showing two of the timbers sampled for dendrochronology (adapted from an original supplied by Caroe Architecture)



Figure 4. Photograph (by author) of the central truss, showing timbers sampled for dendrochronology

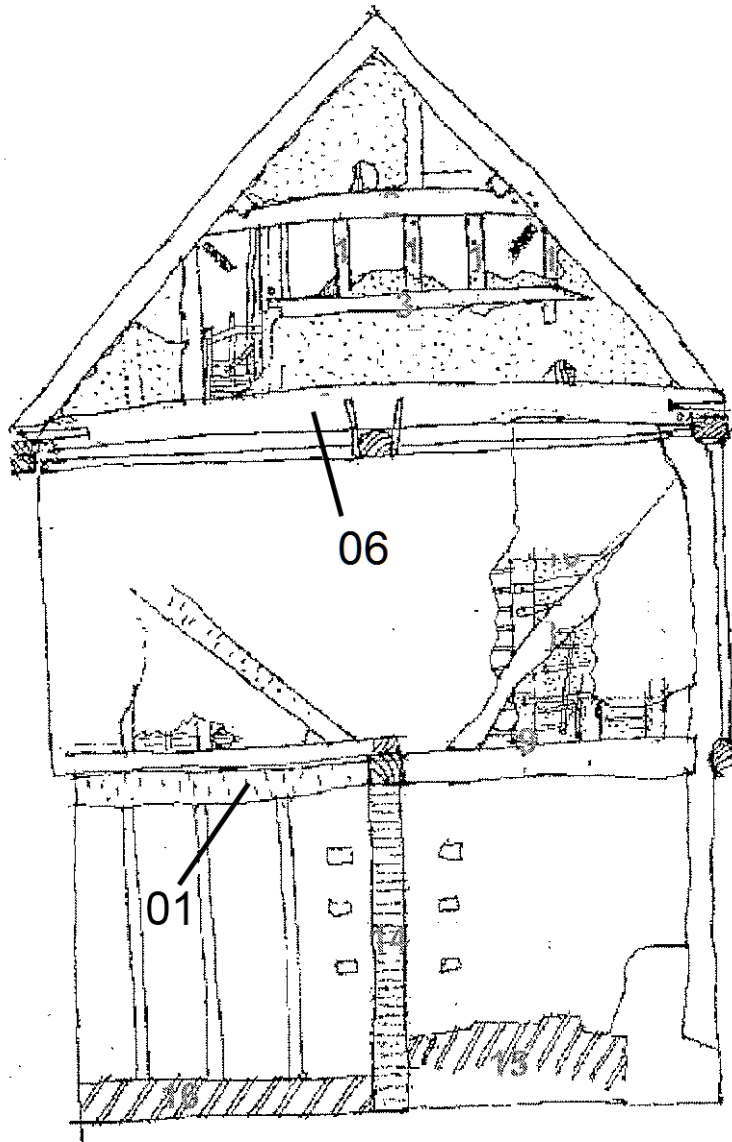


Figure 5. Drawing of the east internal wall, showing timbers sampled for dendrochronology (adapted from an original drawing by Caroe Architecture)

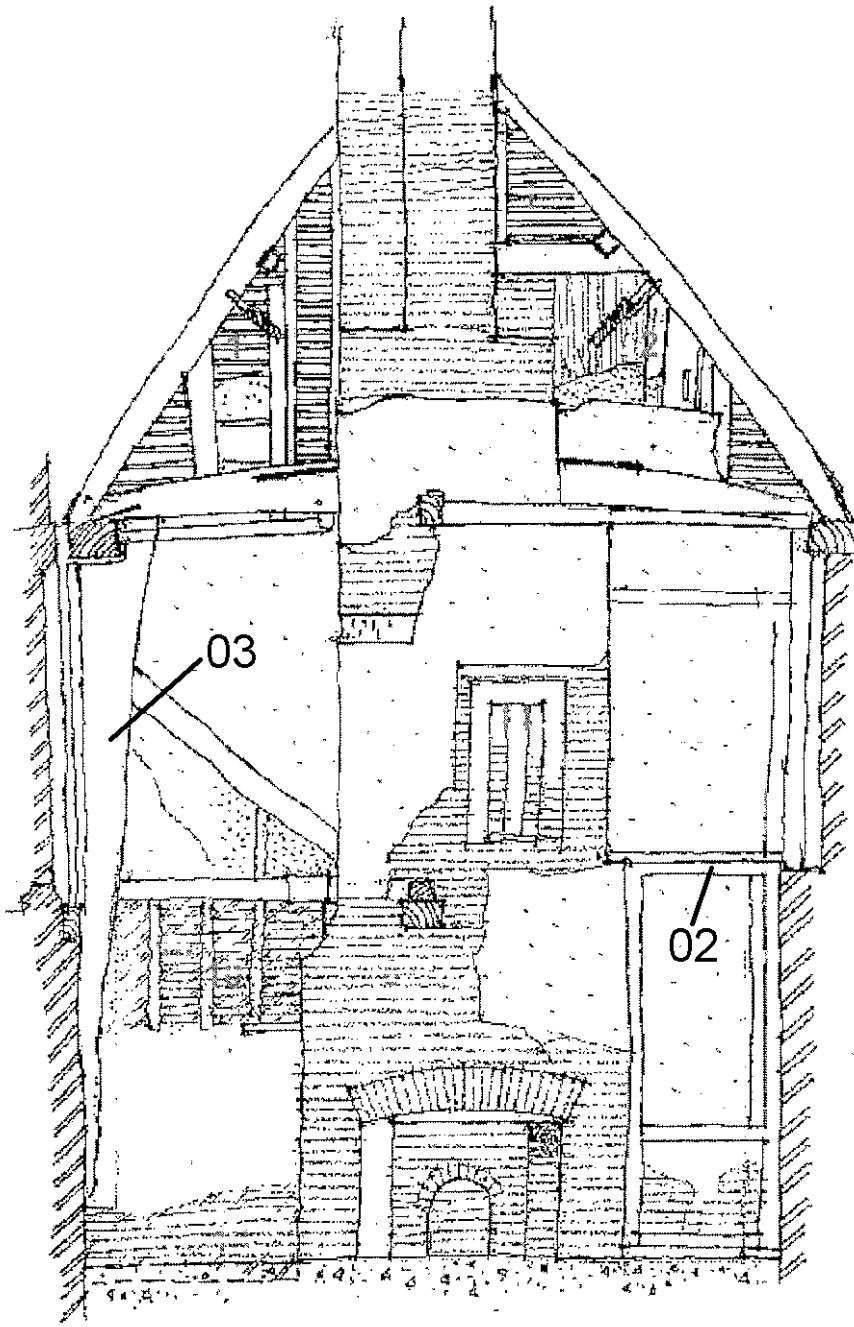


Figure 6. Drawing of the west internal wall, showing timbers sampled for dendrochronology (adapted from an original drawing by Caroe Architecture)

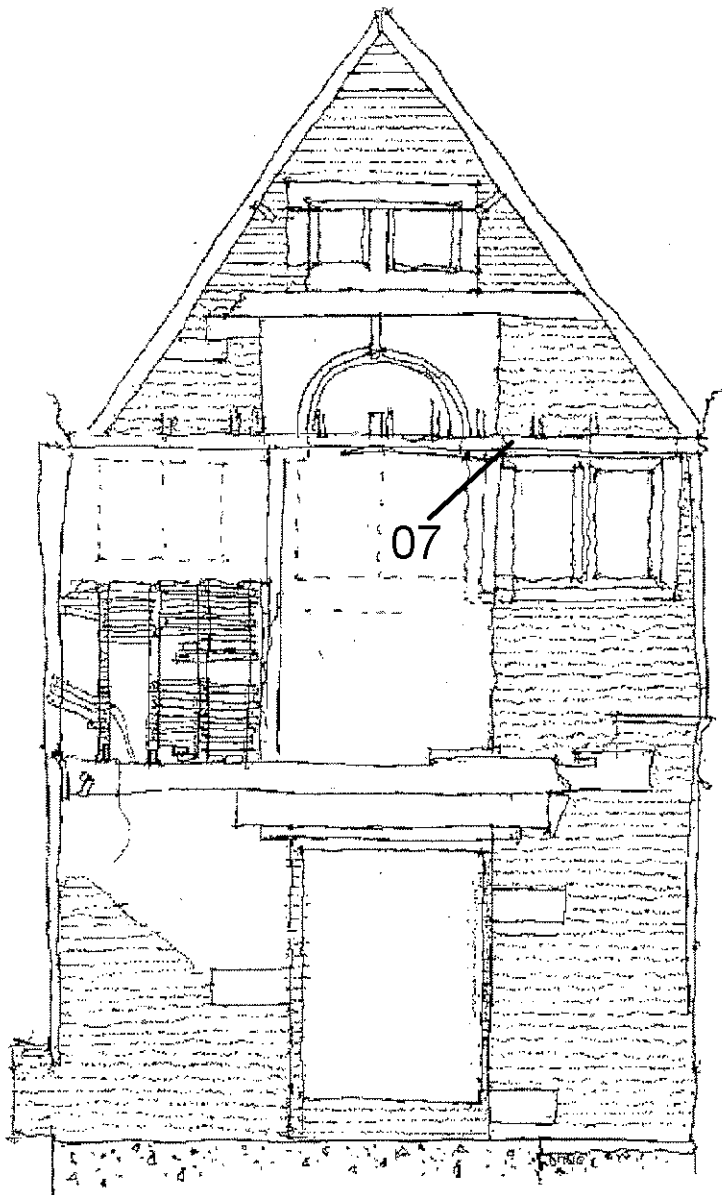


Figure 7. Drawing of the south internal wall, showing timbers sampled for dendrochronology (adapted from an original drawing by Caroe Architecture)

## APPENDIX

Ring width values (0.01mm) for the site chronology KWH741m, with the number of samples present for each year shown

305 166 93 186 223 225 268 198 287 161	1 1 1 1 2 2 2 2 2 2
238 189 171 146 228 188 178 139 214 177	2 2 2 2 2 2 2 2 3 3
154 177 144 184 216 199 164 149 165 199	3 3 3 3 3 3 3 3 3 3
147 160 122 135 160 129 28 187 273 224	3 3 3 3 3 3 3 3 3 3
163 162 125 126 169 153 133 130 181 186	3 3 3 3 3 3 3 3 3 3
121 107 123 210 211 201 200 184 192 262	3 3 3 3 3 3 3 3 3 3
229 213 74 78 88 81 70 77 74 51	3 2 1 1 1 1 1 1 1 1
62 43 51 94 112 50 62 96 78 84	1 1 1 1 1 1 1 1 1 1



## **ENGLISH HERITAGE RESEARCH DEPARTMENT**

*English Heritage undertakes and commissions research into the historic environment, and the issues that affect its condition and survival, in order to provide the understanding necessary for informed policy and decision making, for sustainable management, and to promote the widest access, appreciation and enjoyment of our heritage.*

*The Research Department provides English Heritage with this capacity in the fields of buildings history, archaeology, and landscape history. It brings together seven teams with complementary investigative and analytical skills to provide integrated research expertise across the range of the historic environment. These are:*

- \* Aerial Survey and Investigation*
- \* Archaeological Projects (excavation)*
- \* Archaeological Science*
- \* Archaeological Survey and Investigation (landscape analysis)*
- \* Architectural Investigation*
- \* Imaging, Graphics and Survey (including measured and metric survey, and photography)*
- \* Survey of London*

*The Research Department undertakes a wide range of investigative and analytical projects, and provides quality assurance and management support for externally-commissioned research. We aim for innovative work of the highest quality which will set agendas and standards for the historic environment sector. In support of this, and to build capacity and promote best practice in the sector, we also publish guidance and provide advice and training. We support outreach and education activities and build these in to our projects and programmes wherever possible.*

*We make the results of our work available through the Research Department Report Series, and through journal publications and monographs. Our publication Research News, which appears three times a year, aims to keep our partners within and outside English Heritage up-to-date with our projects and activities. A full list of Research Department Reports, with abstracts and information on how to obtain copies, may be found on [www.english-heritage.org.uk/researchreports](http://www.english-heritage.org.uk/researchreports)*

*For further information visit [www.english-heritage.org.uk](http://www.english-heritage.org.uk)*

