

# PROCEEDINGS

OF THE

## Cambridge Antiquarian Society.

26 OCTOBER 1914—24 MAY 1915

WITH

### Communications

MADE TO THE SOCIETY

MICHAELMAS TERM, 1914, AND  
LENT AND EASTER TERMS 1915.

No. LXVII.

BEING THE NINETEENTH VOLUME.

(THIRTEENTH VOLUME OF THE NEW SERIES.)



Cambridge:

DEIGHTON, BELL & CO.; BOWES & BOWES.

LONDON: G. BELL AND SONS, LTD.

1915

*Price 7s. 6d. net.*

Monday, 1 February, 1915.

Mr E. H. MINNS, President, in the Chair.

Miss CATHERINE E. PARSONS read a paper on

CAMBRIDGESHIRE WITCHCRAFT.

Printed at page 31.

---

Monday, 8 February, 1915.

Mr E. H. MINNS, President, in the Chair.

R. H. EDLESTON, M.A., F.S.A., F.R.G.S., sent a paper, read by proxy, on

THE MONUMENTAL BRASSES OF SPAIN.

The paper was illustrated with three rubbings of brasses in Spain.

Printed at page 50.

G. G. COULTON, M.A., read a paper, illustrated with lantern slides, on

SOME MORE DRAWINGS AND SCRIBBLES FROM  
MEDIÆVAL BUILDINGS.

Printed at p. 53.

---

Monday, 15 February, 1915.

Mr E. H. MINNS, President, in the Chair.

J. SINCLAIR HOLDEN, M.D., exhibited and described a collection of

PALÆOLITHIC FIGURE-STONES FROM THE STOUR  
VALLEY AT SUDBURY.

Not printed.

PROCEEDINGS  
OF THE  
**Cambridge Antiquarian Society,**  
WITH  
COMMUNICATIONS  
MADE TO THE SOCIETY.

VOL. XIX.



NEW SERIES.

VOL. XIII.

1914—1915.

CAMBRIDGE:

PRINTED FOR THE CAMBRIDGE ANTIQUARIAN SOCIETY.

SOLD BY DEIGHTON, BELL & CO., LTD.; AND BOWES & BOWES,  
LONDON, G. BELL AND SONS, LTD.

1915.

Cambridge:

PRINTED BY JOHN CLAY, M.A.

AT THE UNIVERSITY PRESS.

## CONTENTS

	PAGE
Report of the Council, 1913-14 . . . . .	1
New Members elected 1913-14 . . . . .	5
Summary of Accounts for the year 1913 . . . . .	6
<i>Ordinary Meetings with Communications:—</i>	
The Treasure of Lahun. Prof. W. M. FLINDERS PETRIE, M.A., F.R.S., F.S.A., F.B.A. (n. p.) . . . . .	9
Misericords and Bestiaries. SAMUEL GARDNER, Esq. (n. p.) . . . . .	9
Bohemia and its People. FRANCIS P. MARCHANT, Esq. (n. p.) . . . . .	9
Philae: a Sacrifice to Utilitarianism. F. F. OGILVIE, Esq. (n. p.) . . . . .	10
The Churches of Lincolnshire. F. ST JOHN BULLEN, M.R.C.S. (n. p.) . . . . .	10
Some Recent Excavations at the King's Ditch. Prof. T. MCKENNY HUGHES, M.A., F.R.S., F.S.A. . . . .	10, 16
The Maker of the Iron Gates at Clare College. J. R. WARDALE, M.A. . . . .	10, 28
Cambridgeshire Witchcraft. Miss CATHERINE E. PARSONS . . . . .	11, 31
The Monumental Brasses of Spain. R. H. EDLESTON, M.A., F.S.A., F.R.G.S. . . . .	11, 50
Some more Drawings and Scribbles from Medieval Buildings. G. G. COULTON, M.A. . . . .	11, 53
Palaeolithic Figure-Stones from the Stour Valley at Sudbury. J. SINCLAIR HOLDEN, M.D. (n. p.) . . . . .	11
Acoustic Vases in Ancient Buildings. Prof. T. MCKENNY HUGHES, M.A., F.R.S., F.S.A. . . . .	12, 63
English Musical Drama during the Commonwealth. E. J. DENT, M.A., Mus.B. (n. p.) . . . . .	12

n. p. means that the Communication has not been printed in full.

	PAGE
The High Places of Ireland. E. C. QUIGGIN, M.A. (n. p.) . . . . .	12
Rock-Engravings in Russia and Scandinavia. M. C. BURKITT, B.A. (n. p.) . . . . .	13
The Cathedral of Reims. AYMER VALLANCE, M.A., F.S.A. (n. p.) . . . . .	13
Wayside Crosses in Cambridge, and Cambridge Bell-men. Rev. H. P. STOKES, LL.D., F.S.A. (To be printed later.) . . . . .	13
Officers for 1915-1916, elected 24 May, 1915 . . . . .	14
List of Officers, 1915-1916 . . . . .	15

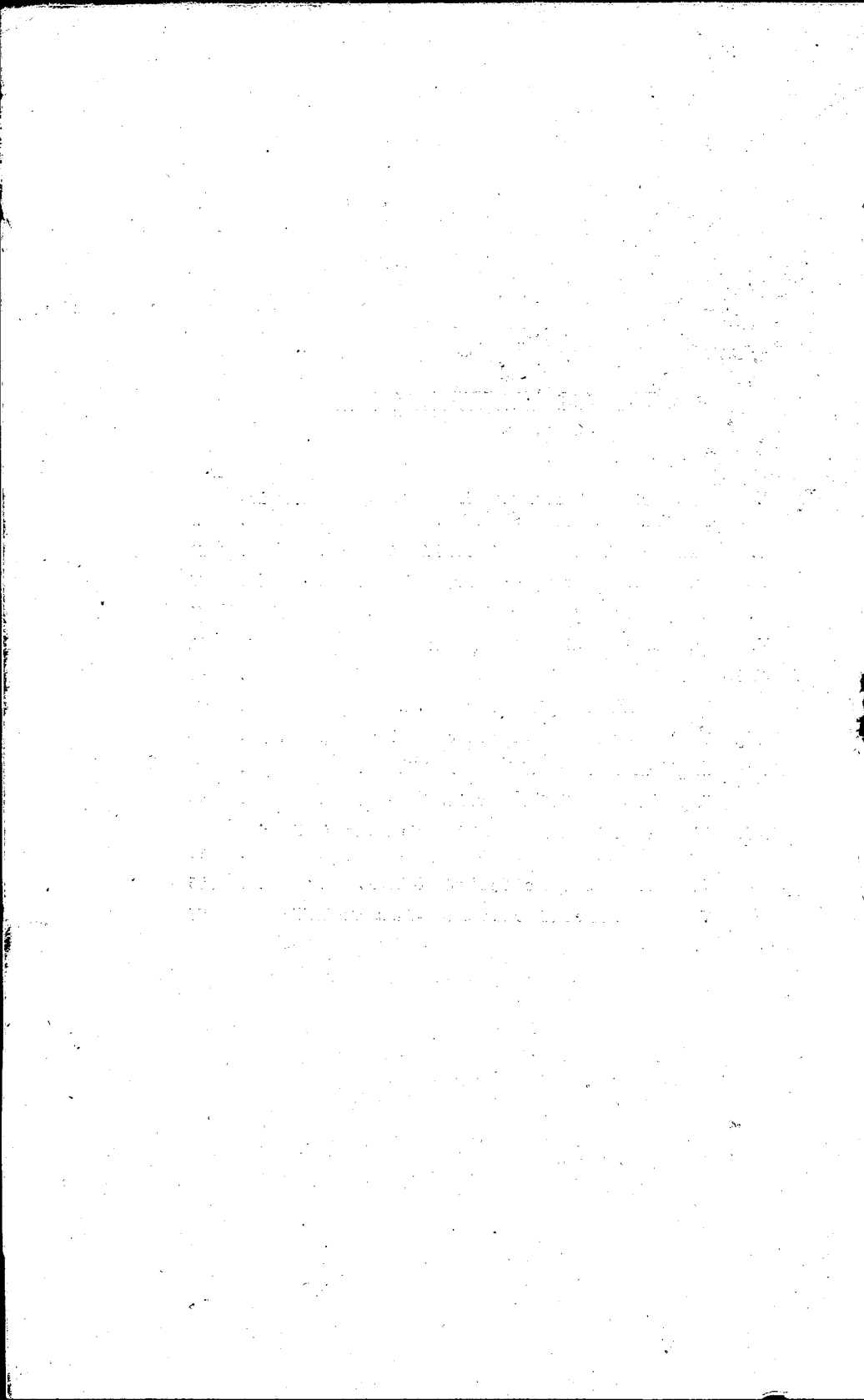
*Printed Papers :—*

Some Objects found in the King's Ditch under the Masonic Hall. Prof. T. MCK. HUGHES, M.A., F.R.S., F.S.A. . . . .	16
The Maker of the Iron Gates at Clare College. J. R. WARDALE, M.A. . . . .	28
Cambridgeshire Witchcraft. Miss CATHERINE E. PARSONS . . . . .	31
The Monumental Brasses of Spain. R. H. EDLESTON, M.A., F.S.A., F.R.G.S. . . . .	50
Medieval Graffiti, especially in the Eastern Counties. G. G. COULTON, M.A. . . . .	53
Acoustic Vases in Ancient Buildings. Prof. T. MCKENNY HUGHES, M.A., F.R.S., F.S.A. . . . .	63
Lists of Purchases for the Museum during the years 1911-1914 . . . . .	91
Index . . . . .	103

n. p. means that the Communication has not been printed in full.

## LIST OF ILLUSTRATIONS

PLATE		PAGE
I.	Fragment of Earthenware with Tobacco-pipe Stems imbedded . . . . .	24
II.	Leather Book-cover found in the King's Ditch . . . . .	25
III.	Brass of Don Perafan de Ribera, 1571 . . . . .	50
IV.	Brass of the Wife of Francisco Fernandes, 1371 . . . . .	51
V.	Brass of Martin Ferrandes de Lascortinas, 1409 . . . . .	51
VI—XVI.	Graffiti . . . . .	62
	Development of Brackets for Roof, &c. . . . .	65
XVII.	Earthen Vessels from Cockerell's Building . . . . .	66
XVIII.	Amphorae built into Wall at Pompeii . . . . .	68
	Jugs and Jars built into Norwich Churches . . . . .	74
XIX.	Diagrams of Arrangements of Acoustic Pottery in Norwich Churches . . . . .	75
	Jug from Old Chapel of Pembroke College . . . . .	75
	Vase from Church of St Laurent-en-Caux, Dondeville . . . . .	77





# CONTENTS

## OF PROCEEDINGS, No. LXVII.

### VOL. XIX. (NEW SERIES, VOL. XIII.)

	PAGE
Report of the Council, 1913-14 . . . . .	1
New Members elected 1913-14 . . . . .	5
Summary of Accounts for the year 1913 . . . . .	6
<i>Ordinary Meetings with Communications:—</i>	
The Treasure of Lahun. Prof. W. M. FLINDERS PETRIE, M.A., F.R.S., F.S.A., F.B.A. (n. p.) . . . . .	9
Misericords and Bestiaries. SAMUEL GARDNER, Esq. (n. p.) . . . . .	9
Bohemia and its People. FRANCIS P. MARCHANT, Esq. (n. p.) . . . . .	9
Philae: a Sacrifice to Utilitarianism. F. F. OGLVIE, Esq. (n. p.) . . . . .	10
The Churches of Lincolnshire. F. ST JOHN BULLEN, M.R.C.S. (n. p.) . . . . .	10
Some Recent Excavations at the King's Ditch. Prof. T. MCKENNY HUGHES, M.A., F.R.S., F.S.A. . . . .	10, 16
The Maker of the Iron Gates at Clare College. J. R. WARDALE, M.A. . . . .	10, 28
Cambridgeshire Witchcraft. Miss CATHERINE E. PARSONS . . . . .	11, 31
The Monumental Brasses of Spain. R. H. EDLESTON, M.A., F.S.A., F.R.G.S. . . . .	11, 50
Some more Drawings and Scribbles from Medieval Buildings. G. G. COULTON, M.A. . . . .	11, 53
Palaeolithic Figure-Stones from the Stour Valley at Sudbury. J. SINCLAIR HOLDEN, M.D. (n. p.) . . . . .	11
Acoustic Vases in Ancient Buildings. Prof. T. MCKENNY HUGHES, M.A., F.R.S., F.S.A. . . . .	12, 63
English Musical Drama during the Commonwealth. E. J. DENT, M.A., Mus.B. (n. p.) . . . . .	12
The High Places of Ireland. E. C. QUIGGIN, M.A. (n. p.) . . . . .	12
Rock-Engravings in Russia and Scandinavia. M. C. BURKITT, B.A. (n. p.) . . . . .	13
The Cathedral of Reims. AYMER VALLANCE, M.A., F.S.A. (n. p.) . . . . .	13
Wayside Crosses in Cambridge, and Cambridge Bell-men. Rev. H. P. STOKES, LL.D., F.S.A. (To be printed later.) . . . . .	13
Officers for 1915-1916, elected 24 May 1915 . . . . .	14
List of Officers, 1915-1916 . . . . .	15
<i>Printed Papers:—</i>	
Some Objects found in the King's Ditch under the Masonic Hall. Prof. T. MCK. HUGHES, M.A., F.R.S., F.S.A. . . . .	16
The Maker of the Iron Gates at Clare College. J. R. WARDALE, M.A. . . . .	28
Cambridgeshire Witchcraft. Miss CATHERINE E. PARSONS . . . . .	31
The Monumental Brasses of Spain. R. H. EDLESTON, M.A., F.S.A., F.R.G.S. . . . .	50
Medieval Graffiti, especially in the Eastern Counties. G. G. COULTON, M.A. . . . .	53
Acoustic Vases in Ancient Buildings. Prof. T. MCKENNY HUGHES, M.A., F.R.S., F.S.A. . . . .	63
Lists of Purchases for the Museum during the years 1911-1914 . . . . .	91
Index . . . . .	103

n. p. means that the Communication has not been printed in full.