

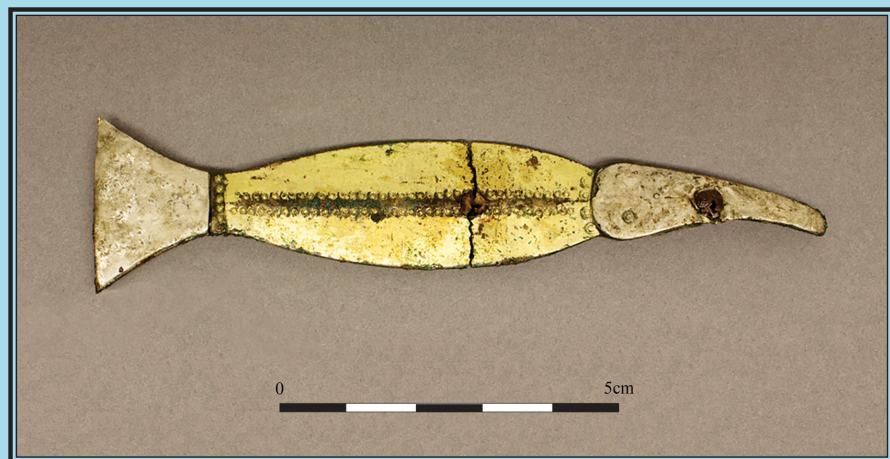
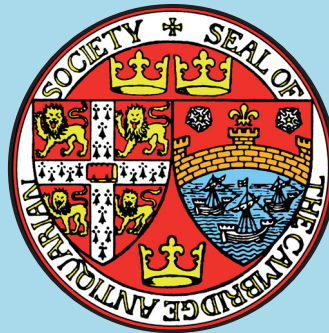
---

# Proceedings of the Cambridge Antiquarian Society

---

(incorporating the Cambs and Hunts Archaeological Society)

Volume CVII  
for 2018



---

## Recent Publications of the Cambridge Antiquarian Society

---

### Proceedings CIV, 2015

- Tom Phillips: *Bronze Age and Iron Age settlement and land-use at the Milton Landfill and Park & Ride Sites, Cambridgeshire*
- Jonathan Tabor: *Later Neolithic and Early Bronze Age activity at North Fen, Sutton Gault, Cambridgeshire*
- Tom Woolhouse with Andrew Peachey, Julia EM Cussans, John R Summers and Antony RR Mustchin: *Late Iron Age, Roman, Anglo-Saxon and Medieval occupation at the former Church Hall site, High Street, Soham*
- Cambridge Archaeology Field Group (CAFG): *Change in a South Cambridgeshire parish: understanding the Bronze Age to late medieval settlement within Haslingfield*
- Richard Newman: *Planned Redevelopments in Medieval and Early Post-Medieval Chesterton*
- Yvonne Wolfram-Murray and Andy Chapman: *Iron Age and Romano-British settlement at the Papworth Hospital car park, Papworth Everard, Cambridgeshire*
- Nicholas Orme: *The Medieval Schools of Cambridge, 1200–1550*
- John S Lee: *Decline and growth in the late medieval fenland: the examples of Outwell and Upwell*
- Anthony Gibson: *Anglo-Saxon 'work boxes' and the Burwell Grave 42 Box, Christian or Pagan?*
- Francis Young: *Papists and Non-jurors in the Isle of Ely, 1559–1745*
- Sarah Bultz, Rachel Clarke and Sally Croft: *Fieldwork in Cambridgeshire 2014*
- Chris Jakes: *2014 Accessions to the Cambridgeshire Collection*
- Recent Archaeological Publications*

### Proceedings CV, 2016

- Antony R R Mustchin, Julia E M Cussans, John R Summers and Andrew Peachey: *A large Romano-British farmstead at North Stud, Woodditton, Cambridgeshire*
- Andrew A S Newton: *Enclosures adjacent to a possible villa at Tunbridge Lane, Bottisham, Cambridge*
- Steve Boreham, Charles Moseley and Julie Boreham: *The case for reclassifying The Hythe, Reach, Cambridgeshire as a site of historic and archaeological significance*
- Antony R R Mustchin with contributions by Andrew Peachey, John R Summers, Julie Curl, Nicholas J Cooper and Peter Thompson. Illustrations by Thomas Light: *Pits and Plots: 'Backyard' Activity at Chequers Court, Huntingdon and its Implications for Understanding the High Medieval Expansion of the Town*
- Mark Germany: *'From William Rudstone for an orchard with two ponds': Archaeological excavation at the Thurlow Nunn Standen site, Lisle Lane, Ely*
- Graham Hart: *'Government according to the Holie Scripture': Cambridgeshire's Petition against episcopacy (1641)*
- Naomi Brennan (née Hall): *The first Prisoner of War camp: a Time Team evaluation at Norman Cross, Cambridgeshire*
- Craig Cessford: *Cambridge College Ceramics c. 1760–1900: a brief overview*
- Aileen Connor and Nick Gilmour: *The Duke of Wellington, Whittlesey: the story of a 'lost' Fenland pub*
- Kate A Beats: *An Antiquarian's Crypt at Corpus Christi College: The Collection of The Rev S S Lewis*
- Rebecca Casa Hatton, Rachel Clarke, Sally Croft, Katherine Hamilton and Rose Karpinski: *Fieldwork in Cambridgeshire 2015*
- Susan Kilby, Nicholas Rogers: *Book Reviews*

### Proceedings CVI, 2017

- Stuart Ladd and Richard Mortimer: *The Bran Ditch: Early Iron Age Origins and Implications for Prehistoric Territories in South Cambridgeshire and the East Chilterns*
- Alice Lyons and Kathryn Blackbourn: *Early Roman Pottery Production at Brampton, Cambridgeshire*
- Simon Keith: *A study of "Domesday Watermills" in the Cambridgeshire landscape*
- Craig Cessford: *Riparian Cambridge: archaeological excavations near the River Cam at WYNG Gardens, Thompson's Lane, and Elsewhere*
- William Franklin: *The Ferrars and the Enclosure of Little Gidding*
- Janet Morris: *Horseheath Hall revisited*
- Frances Willmoth: *William Dugdale's Itinerary of his Tour of the Fens, May–June 1657*
- William Gibson: *'So Cruel and Unjustifiable a Revolution': Bishop George Pretymen Tomline and Edward Kilvington 1794–6*
- David Ingham: *Short Report: Thorney, Willow Hall Farm Quarry: TL 2476 0205 (ALBION report 2016/198)*
- Ian Sanderson for Archaeology RheeSearch Group: *Short Report: A Romano-British village at Radwinter*
- Rebecca Casa Hatton, Rachel Clarke, Sally Croft, Katherine Hamilton, Ruth Beckley, and Ben Donnelly-Symes: *Fieldwork in Cambridgeshire 2016*
- Helen Walker: *Book Review*



# Format of articles and submissions

## Format of articles

All articles should begin with a Summary. The main text of the Article should be followed by (as appropriate): Appendices (consult the Editor on the use of Appendices); Glossary; Acknowledgements; Acknowledgement of Grant; References/Bibliography.

Full stops after initials should be omitted.

References should be cited using the 'Harvard System' and following advice from the Editor who can also provide a brief style guide.

## Format of submissions

The *Proceedings* are produced digitally: text should be supplied as a Word document, ideally via email although a disk may be acceptable: contact the Editor for more information. Artwork should normally be supplied as digital files.

## Tables

These should be set out with no vertical rules and as few horizontal rules as possible. Files supplied from a specialist database must be compatible with Microsoft Excel.

## Figures and illustrations

A complete list of figures and their captions must accompany each article; note that greyscale photographs must be referred to as figures and included in the list of figures rather than separately as plates. Colour versions of figures may be included as plates at the discretion of the Editor. Each piece of artwork and/or digital file should be clearly identified with the correct figure number, and named in a way that identifies the article in which it is to appear ('Fig.1' alone is not sufficient). The desired location of each figure must be marked in the final text. Figures should be supplied in digital format to save time and cost, and to ensure that the final versions are of the best quality. Requirements for both digital files and camera-ready artwork are noted below; please contact the Editor for more specific information.

Note that the PCAS page is set in two columns: maximum column width is 76mm ; maximum page width is 161mm; maximum page height is 240mm.

### *Photographs*

Photographs taken with digital cameras should be saved with minimal compression to avoid JPEG artefacts and supplied as digital files.

### *Artwork*

Adequate keys and scales must included in the image (**textual statements of scale are not accepted**). Illustrations may be reduced to fit the available space: extremely fine lines and small text must be avoided.

Line art images should have a resolution between 900 and 1200dpi when printed at the desired size; greyscale and colour images containing crisp lines should have a resolution of 600–900dpi. Photographs should have a resolution of 300dpi or more. Artwork should be supplied as TIF or EPS.

Graphic files should be produced using graphics packages such as Illustrator or Freehand, and be in a standard graphic format such as TIF or EPS with fonts included or text converted to outlines. Please check files exported from GIS packages and CorelDraw to ensure all lines and placed images are true black or grey, not RGB, and that lines have been assigned a thickness appropriate to the final print size.

## Other information

Contributors who know of possible sources of subventions towards the cost of printing their paper should inform the Editor of this when submitting the typescript; long articles will not normally be accepted without some financial support. Offprints are supplied as digital files (PDF).



---

# Proceedings Volume CVII, 2018

## Contents

---

A Flint Scatter at Nine Wells, Great Shelford Steve Boreham, Julie Boreham and Lawrence Billington	7
Romano-British Spelt Malting on the Cambridgeshire Fen Edge: Excavations at Norman Way Industrial Estate, Over Rachel Fosberry and Pat Moan	15
A Roman Extra-Mural Settlement at the Woolf Institute, Westminster College, Cambridge Steve Graham with Alice Lyons	31
Return to the Three Kings, Haddenham: further excavation of the early Anglo-Saxon cemetery discovered in 1989 Jon House, Tom Woolhouse, Rosie Weetch and Aileen Tierney	41
The Shrunken Village of Hamerton Stuart Ladd, with a contribution by Ian Riddler	95
A Fourteenth-Century Terrier from Wimpole, Cambridgeshire William Franklin, Susan May and Michael Coles	107
A reassessment of the 'relict field system' in Tadlow, Cambridgeshire Adrienne Compton	119
The early history of Commercial End, Swaffham Bulbeck, a small hamlet on the Cambridgeshire fen edge Rob Brooks* and Michael Green	129
Short Report: Willow Hall Farm Quarry, Thorney TL2490 0210 (ALBION report 2018/77) David Ingham	143
Short Report: Saxo-Norman Settlement Remains at Fulbourn Primary School Daria Adamson	144
Short Report: An unusual 14th-century bone knife handle from Edison Bell Way, Huntingdon Ian Riddler, with Chris Thatcher	148
Spring conference at Ely, The Maltings, Ship Lane 10 March 2018	
The Architecture and Archaeology of Ely: Papers in Memory of Anne Holton-Krayenbuhl.	151
Book Reviews: <i>The Horningsea Roman Pottery Industry in Context</i> , Andrew Peachey; <i>Jonas Moore's Mapp of the Great Levell of the Fenns, 1658</i> , Tom Williamson; <i>Gonville &amp; Caius College: The Statutes of the Founders</i> , Francis Young <i>Durovigutum: Roman Godmanchester</i> , Stephen Upex	157
Accessions to the Cambridgeshire Collection 2016–17 J D Pickles	161
Fieldwork in Cambridgeshire 2017 Ruth Beckley, Rebecca Casa Hatton, Rachel Clarke, Jessica Cooper-Dunn, Ben Donnelly-Symes and Katherine Hamilton	169
Index	191
Publication Policy	199

\* Unfortunately Rob Brooks' name was inadvertently omitted from the printed volume.



Proceedings of the Cambridge Antiquarian Society CVII (2018)

