



Top: **Plate 1.** SF25 Horse harness fitting converted to a brooch.

Middle: **Plate 2.** SF33 Girdle-hanger.

Above: **Plate 3.** SF33 Impressions of grass, straw or similar on reverse of girdle-hanger.

From *Return to the Three Kings, Haddenham: further excavation of the early Anglo-Saxon cemetery discovered in 1989*

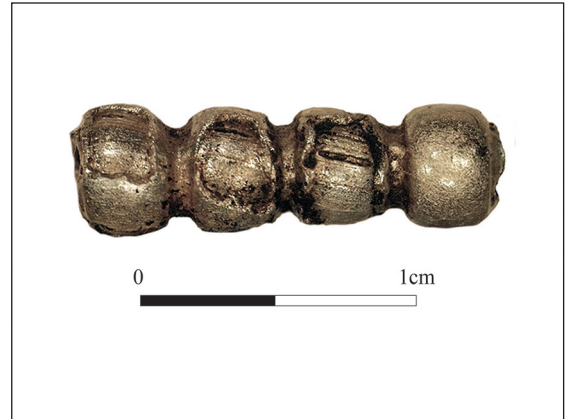


Above: **Plate 4.** SF3 Shield boss.

Below: **Plate 5.** SF8 Shield applique.

From *Return to the Three Kings, Haddenham*: further excavation of the early Anglo-Saxon cemetery discovered in 1989.





Above left: **Plate 6.** SF23 White glass bead with blue glass crossing trail.

Above right: **Plate 7.** SF87 Segmented gold-in-glass bead.

From *Return to the Three Kings, Haddenham*: further excavation of the early Anglo-Saxon cemetery discovered in 1989.



Plate 8. Post-medieval pottery. From *The Shrunken Village of Hamerton*. See Figure 4 in that paper for a detailed description of the items shown.

