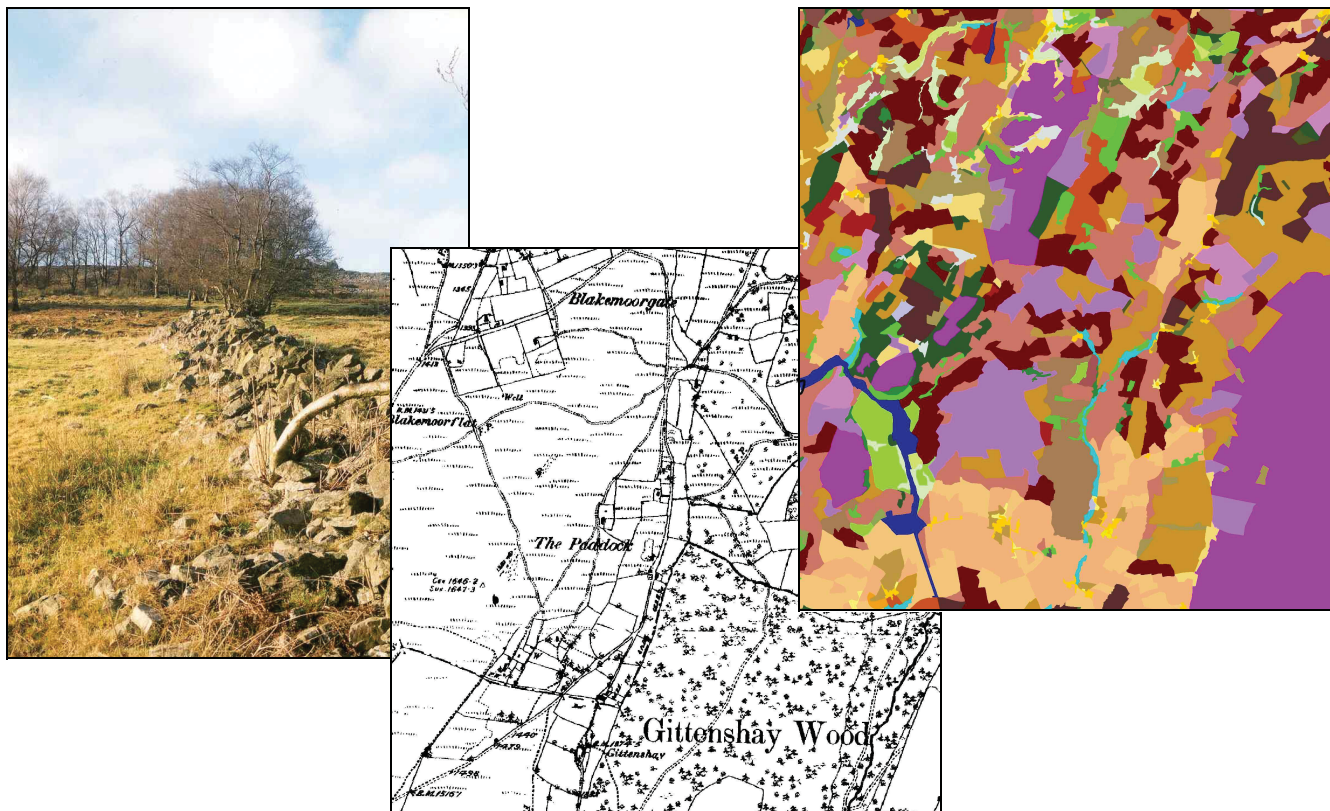




ENGLISH HERITAGE

# The Shropshire Historic Landscape Character Assessment.

## Final Report



Andy Wigley



Shropshire  
County Council

# **The Shropshire Historic Landscape Character Assessment.**

**Final Report**

**Andy Wigley  
June 2007**

# CONTENTS

<b>ACKNOWLEDGEMENTS</b>	<b>iv</b>
<b>EXECUTIVE SUMMARY</b>	<b>v</b>
<b>1. INTRODUCTION</b>	<b>1</b>
<b>2. METHODOLOGY</b>	<b>5</b>
<b>3. HISTORIC LANDSCAPE CHARACTER TYPES</b>	<b>14</b>
<b>4. HLC/ LCA INTERGRATION</b>	<b>70</b>
<b>5. CONCLUSION: APPLICATIONS AND FUTURE DEVELOPMENT</b>	<b>78</b>
<b>6. REFERENCES</b>	<b>83</b>
<b>APPENDIX 1 – PROJECT DESIGN</b>	<b>86</b>
<b>APPENDIX 2 – DATA SOURCES</b>	<b>100</b>
<b>APPENDIX 3 – METHODOLOGY FOR DEFINING HLC TYPES</b>	<b>102</b>
<b>APPENDIX 4 – HLC &amp; POTENTIAL FOR TARGETTING OF AGRIENVIRONMENT FUNDING IN THE SVLMI</b>	<b>112</b>
<b>APPENDIX 5 – MORDA VALLEY WET WASHLANDS EXAMPLE RESPONSE</b>	<b>124</b>
<b>APPENDIX 6 – SHROPSHIRE WOODLAND OPPORTUNITIES MAP – HISTORIC ENVIRONMENT THEME MAP</b>	<b>136</b>
<b>APPENDIX 7 – UPPER ONNY VALLEY DOWN TO EARTH COMMUNITY LANDSCAPE PROJECT – HLC BASED LANDSCAPE HISTORY</b>	<b>142</b>
<b>APPENDIX 8 – ‘TOUR GUIDE’ FOR DOWN TO EARTH IN THE CLUN FOREST</b>	<b>146</b>

## **Acknowledgements**

The author would like to acknowledge the advice and assistance provided by Angela Cott, Graham Fairclough, Clare Gathercole, Clare Greener, Shona Frost, John Harrison, Bill Klemperer, Cath Landles, Marie McLeish, Rob Pinsent, Steve Potter, John Robinson, Harley Thomas, Sam Turner, Penny Ward, Steven Warnock and Michael Watson.

## **Executive Summary**

*This report provides technical details of the methodology and results of a three year study of the historic landscape character of Shropshire (including the Borough of Telford and Wrekin). This work formed part of English Heritage's national programme of Historic Landscape Characterisation (HLC) and was carried out in partnership between Shropshire County Council and English Heritage.*

*The aim of the Shropshire Historic Landscape Characterisation Project, as set out in the original project design (see Appendix 1), was to "...to improve understanding of the historic and archaeological character of the whole landscape of Shropshire, with particular regard to the visibility of time-depth in the landscape and to the historic processes that have created the landscape". This was achieved by developing a desk-based, attribute led methodology, whereby the landscape was characterised in relation to nine broad Attribute Groups. When analysed, the data thus collected enabled the definition of fifty eight Current Historic Landscape Character (HLC) Types and forty six Previous HLC Types. Definitions of each of the Types are provided in Section 3.*

*From the outset the intention was to use the HLC to review and revise the pre-existing Landscape Character Assessment for the county. The Shropshire HLC methodology was therefore designed to be compatible with that of the LCA. Section 4 describes how the results of HLC were subsequently integrated with the LCA, thus enabling the definition of a series of Landscape Types.*

*The final section of the report reviews the work on the applications of HLC that Shropshire County Council has conducted since the initiation of the HLC project. Further details are also provided in the Appendices at the end of the report.*