

western end of the trench a 2m x 1.50m x 1.20m depth pit was excavated but again only showed modern backfill from previous works (Plate 1).



Plate 1: Trench 1 showing Pit 1 in the foreground containing modern backfill.

Trench 2, Pit 2

A second pit was excavated within the layby itself and measured 2.5m x 2.5m and was 1.5m deep. The modern Tarmac surface extended to a depth of 0.5m, below which was modern backfill relating to the installation of the existing water main. An L-shaped trench was subsequently dug to connect the two pits and measured 8m x 1m and 1.5m depth. This trench was again filled by modern backfill above existing services (Plate 2).



Plate 2: Trench 2, Pit 2 showing tarmac surface, existing water main and modern backfill.

No archaeological finds or features were encountered during the works and no further work is required.

Documentation: N/A

Archive deposition: Internal at NAA

References

Northern Archaeological Associates (2007) *Bridlington to Haisthorpe Water Improvement Scheme: Interim Report*. NAA report 07/81

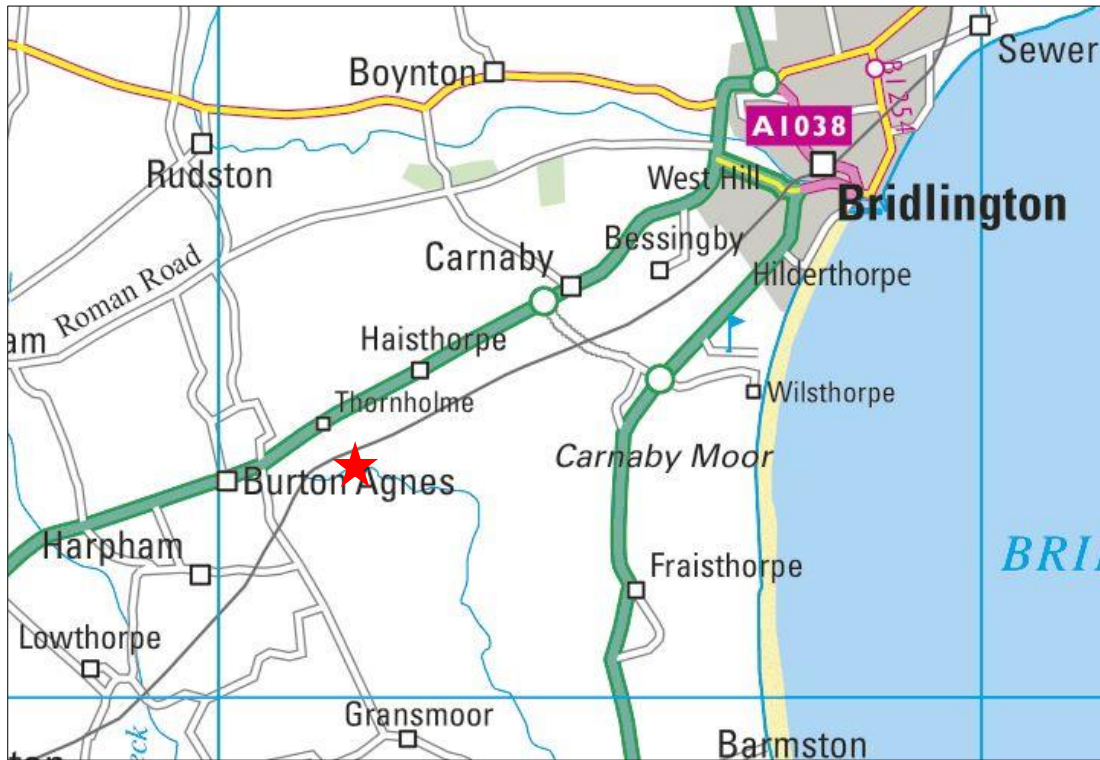


Figure 1. Site Location

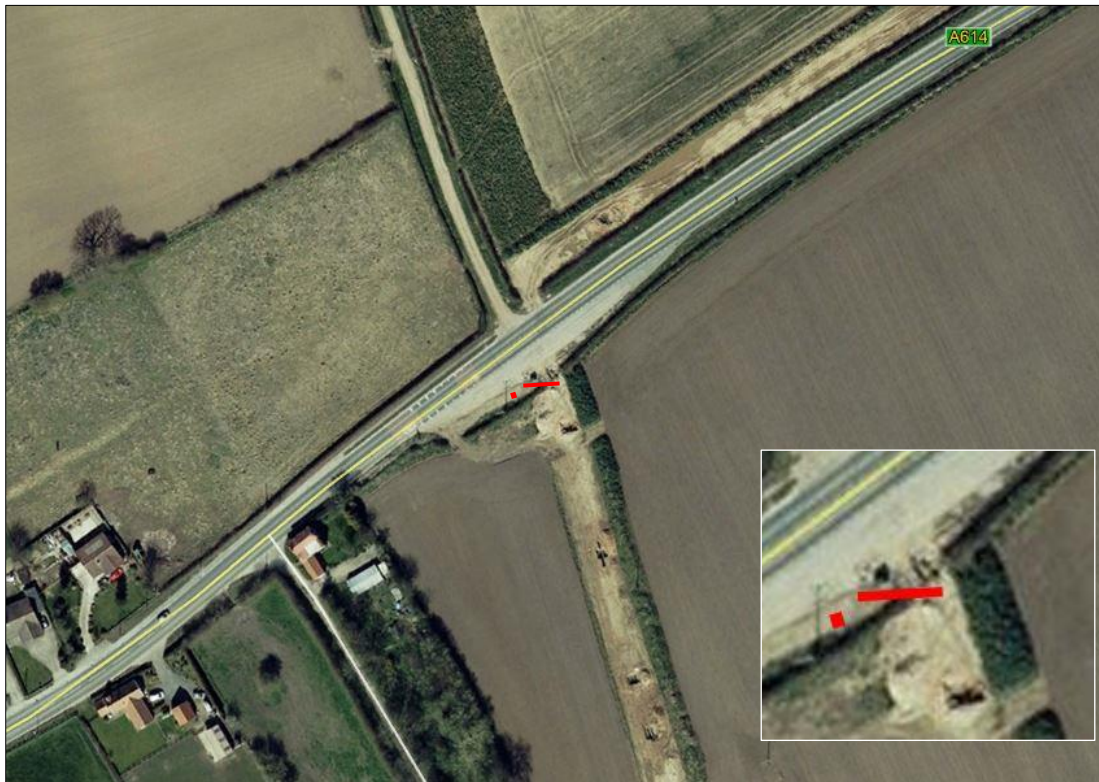


Figure 2. Location of archaeological monitoring, overlain on Google Earth view of previous pipeline scheme. © 2019 Google © Getmapping plc