

NORTHERN ARCHAEOLOGICAL ASSOCIATES LTD

LILBOURNE DRIVE, YORK: SURFACE WATER DIVERSION

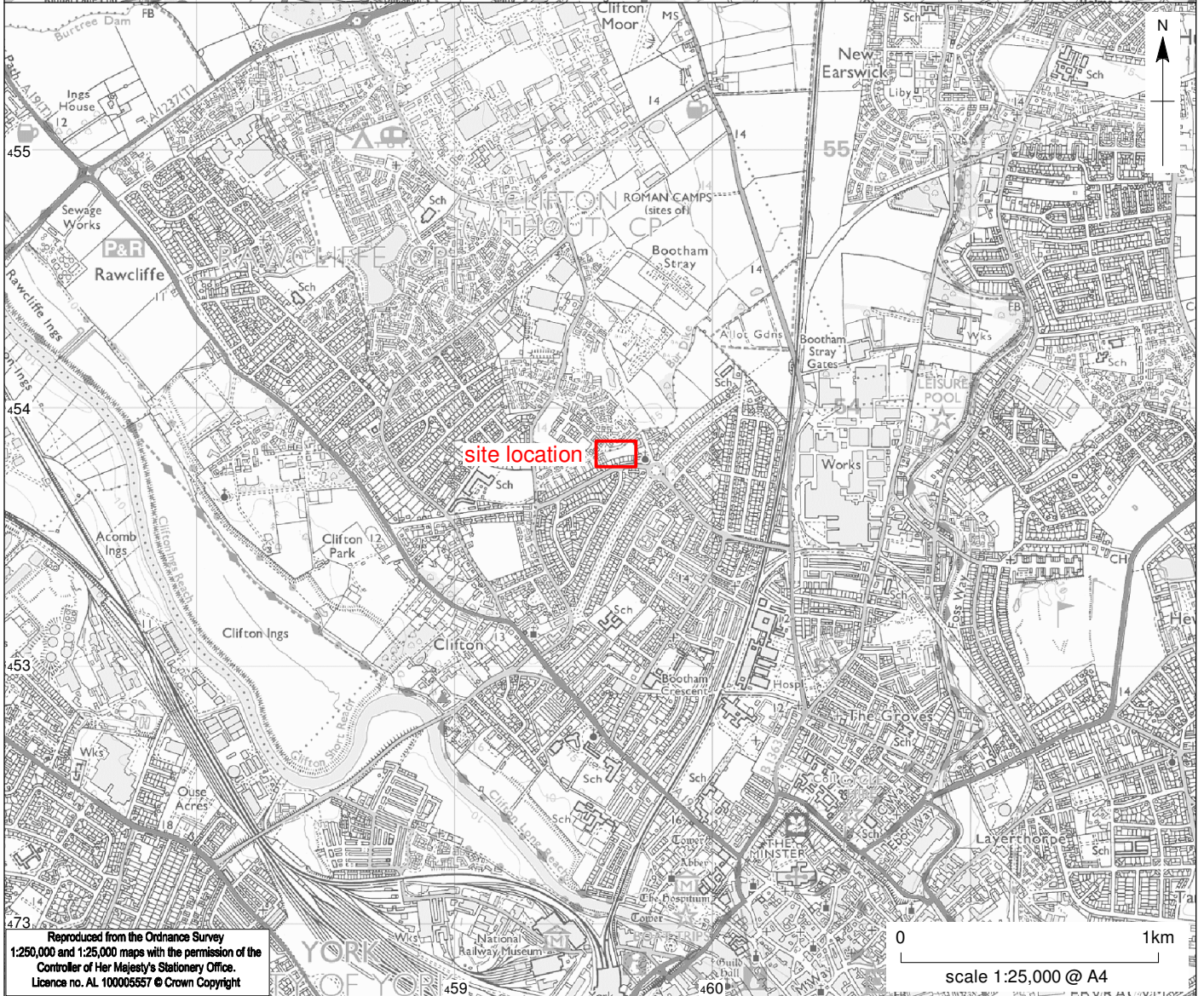
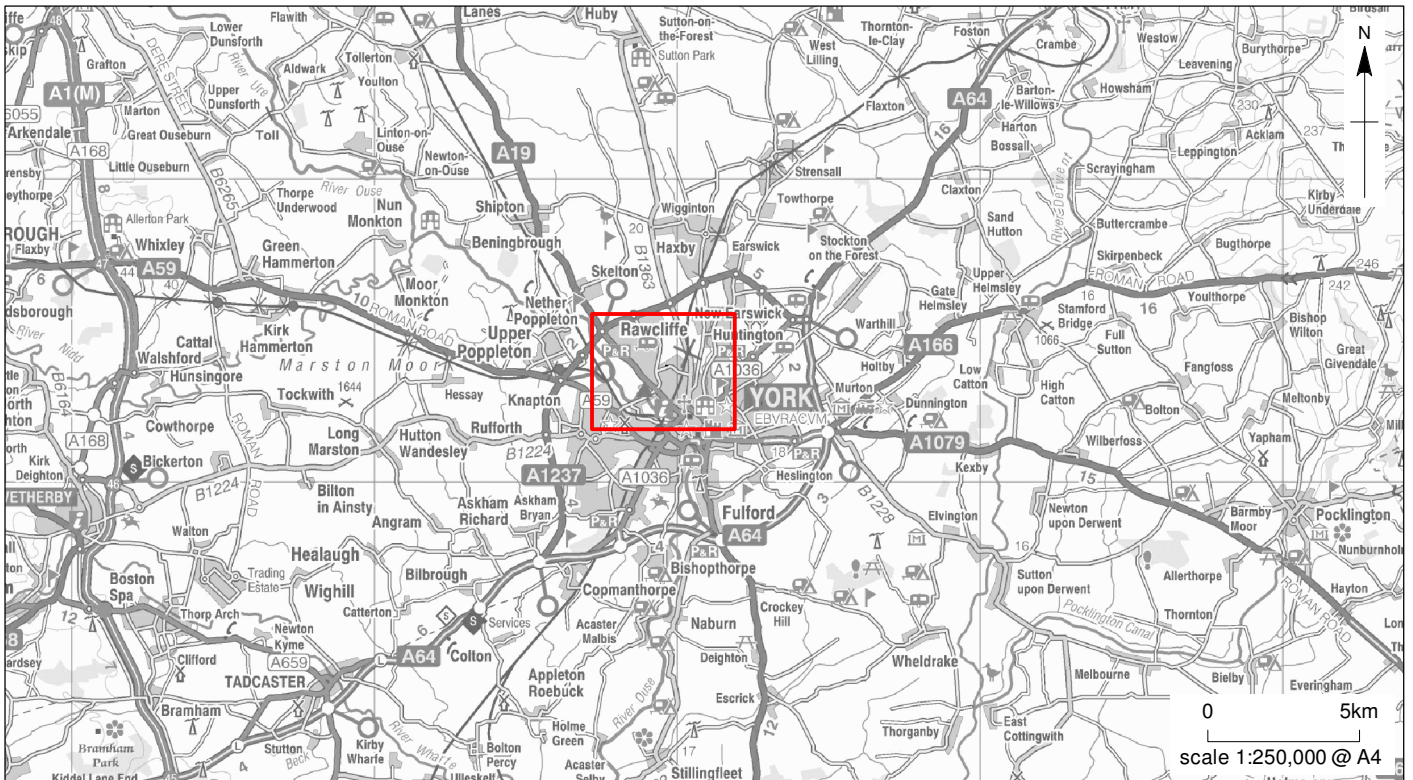
Negative Watching Brief Report

Site name: Lilbourne Drive, York **Grid reference:** SE 596 538
District: Clifton Moor **Administrative Authority:** City of York
Development: Surface water diversion **Planning application reference:** n/a
Client: Yorkshire Water Services Ltd **Contractor:** J.N. Bentley Ltd
Monitoring Archaeologist: Kevin Collins **Project Manager:** Oliver Cooper
Date(s): 17/1/12 to 16/2/12 **NAA Project number:** 1056 **Site code:** n/a

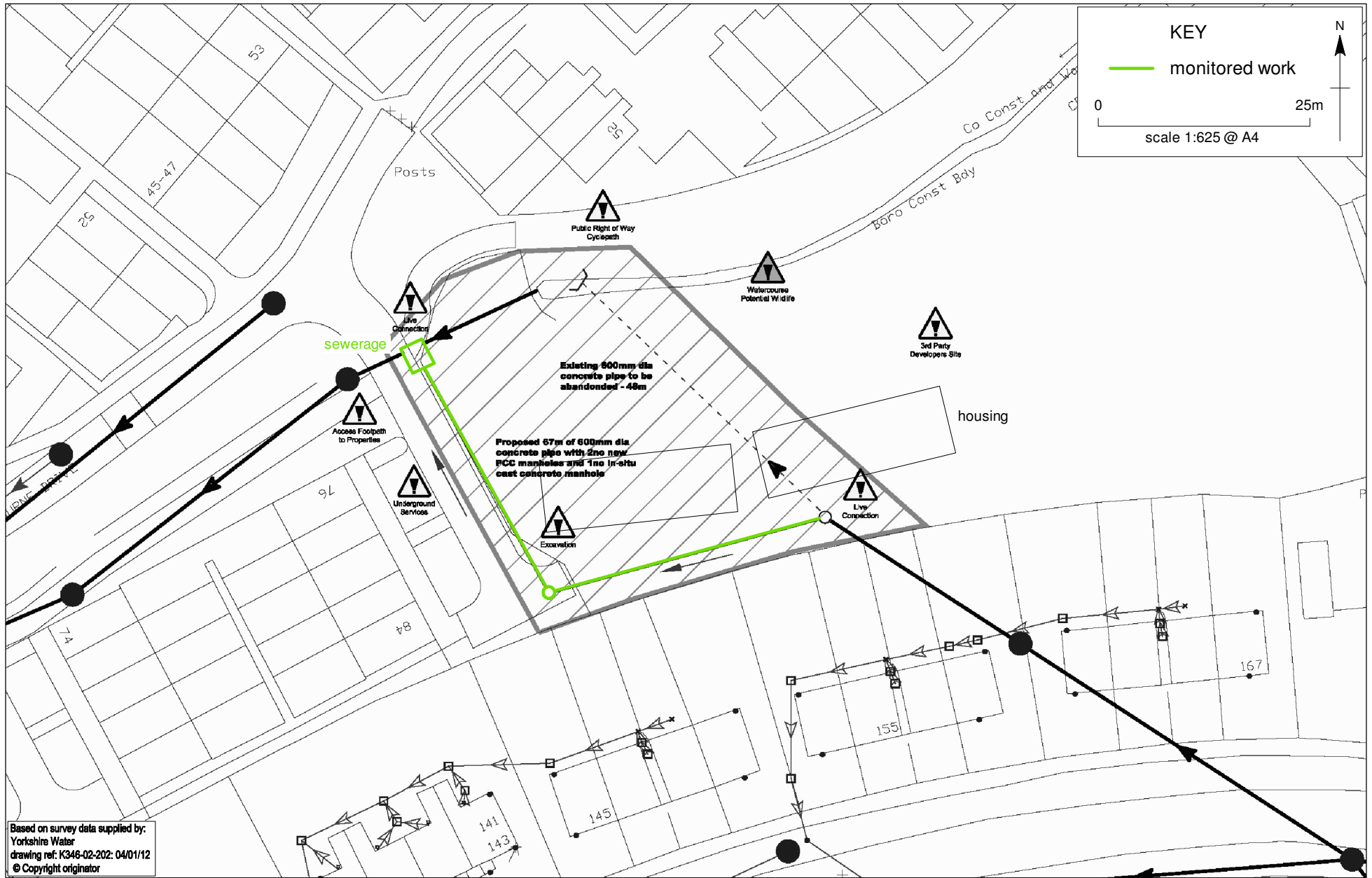
Reasons for watching brief: The City of York Archaeologist provided the following information: *the area around Lilbourne Drive (Figure 1) contains archaeological features and deposits relating to a late-prehistoric, Romano-British and medieval landscape. An archaeological watching brief on land centred at SE 59655383 carried out by the York Archaeological Trust established that remains of this historic landscape lie at 0.7m below the present ground level. It is possible that significant features relating to this medieval and earlier landscape of this area are extant beneath the turf/ploughsoil layer, but these were not encountered in any of the test pits due to the small size and wide distribution of the areas investigated.* Also recorded within the vicinity was the findspot of a Roman military tombstone (NMR ref SE55SE04), while a group of Roman camps are recorded 1km to the north and east.

Result: Prior to archaeological monitoring commencing, the area had been cleared and levelled for the construction of new housing (Figure 2). A hardcore surface and access roadway had also been constructed. Where topsoil remained it was found to be heavily contaminated with waste oil and burnt rubbish. The monitored excavations comprised two trenches, measuring 1.60m wide and 2.5m deep, and two pits for manholes, 3m square and 2.5m deep. The first trench extended for 25m in a south-easterly direction from a new manhole connecting with an existing corrugated steel water conduit carrying Burr Dyke beneath the street. A second manhole pit was excavated, and then the trench continued on a north-easterly direction for 32m to a connection in an existing manhole. The excavations revealed that the ground had been greatly disturbed by previous groundworks for the new housing development. No prehistoric or Roman features were identified, and the only observed artefacts comprised an oyster shell and partial animal jawbone, which were not retained.

Documentation: Digital photographs **Archive Deposition:** Internal archive
Report number: NAA 12/26 **Report Date:** 17th February 2012



Reproduced from the Ordnance Survey
1:250,000 and 1:25,000 maps with the permission of the
Controller of Her Majesty's Stationery Office.
Licence no. AL 10000557 © Crown Copyright



©NAA 2012

Lilbourne Drive, York: location of groundworks

Figure 2