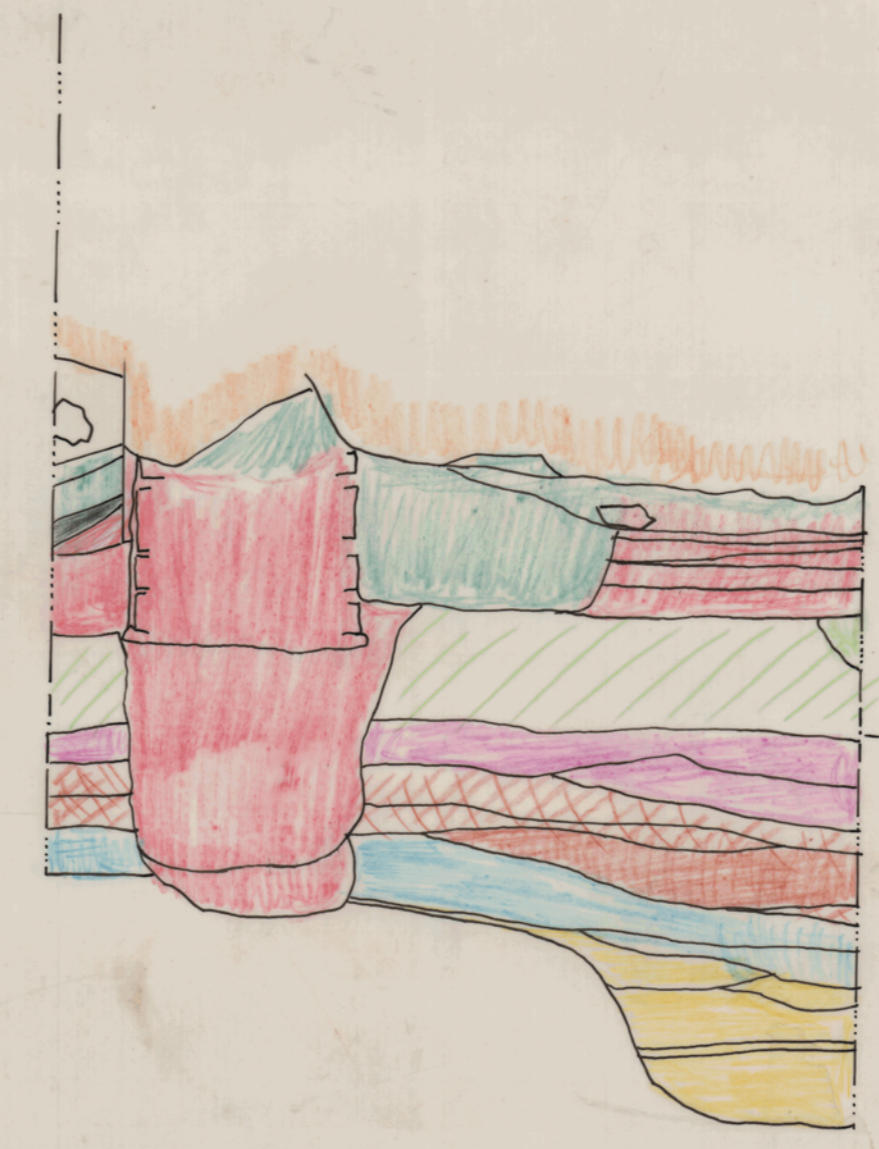
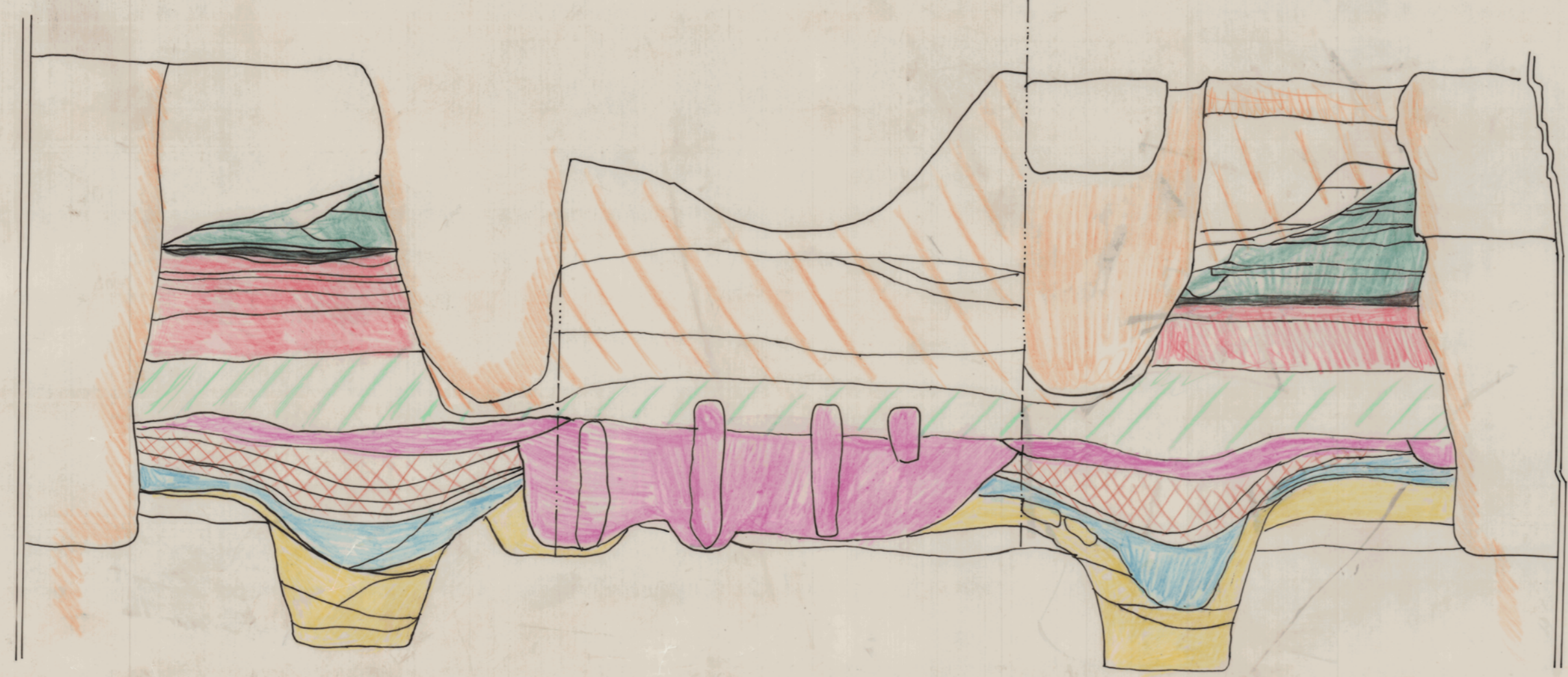


A B C D



- 1. LARGE SLOT FOR MASSIVE TIMBER BUILDING + ASSOCIATED ROBBLED SURFACES + SLITS.
- 2a. DESTRUCTION OF ABOVE.
- 2b. DUMP LAYERS + SMALL SLOT.
- 3. LARGE WOODEN BUILDING + ASSOCIATED FLOORS.
- 4. DUMP LAYER.
- 5a. STONE BUILDING + ASSOCIATED FLOORS.
- 5b. REBUILD OF BUILDING + ASSOCIATED FLOORS.
- 6. MED + LATER.

PHASED SECTIONS  
228 HIGH ST.

JAN 1975 J.