

For the purposes of this survey, the first of the first floor internal room spaces within the interior of **Building 2**, is designated as **Cell 11**. This is situated to the west of the first floor landing (**Cell 10**) and is within the first floor interior of the rear outshut of **Building 2**. This is a first floor former office.



**Plate 201: View of the flooring of Cell 11, from the north-east**



**Plate 202: View of the flooring of Cell 11, from the north-west**

**Plates 201 and 202** feature the flooring of **Cell 11**, which is covered with modern carpeting.

**Plate 203** features a general view of the interior of **Cell 11**.



**Plate 203: General view of the interior of Cell 11, from the north-east**



**Plate 204: View of the west wall of Cell 11, from the north-east**

**Plates 204 and 207** present views of the west wall of **Cell 11**, which has been rendered over with plasterwork.

**Plates 205 and 206** furnish views of the ceiling of **Cell 11**, which has been rendered over with modern plasterwork. Its low angle reflects that of the low angled half gabled roof structure of the above rear outshut.



**Plate 205: View of the ceiling of Cell 11, from the north-east**



**Plate 206: View of the ceiling of Cell 11, from the north**



**Plate 207: View of the west wall of Cell 11, from the north-east**



**Plate 208: View of the south wall of Cell 11, from the north-west**

**Plate 208** presents a view of the south wall of **Cell 11**, which has also been rendered over with plasterwork. Also shown is the inner face of the first floor south facing window opening that was recorded externally at the South Elevation of this building.



Plate 209: View of the north wall of Cell 11, from the south-west

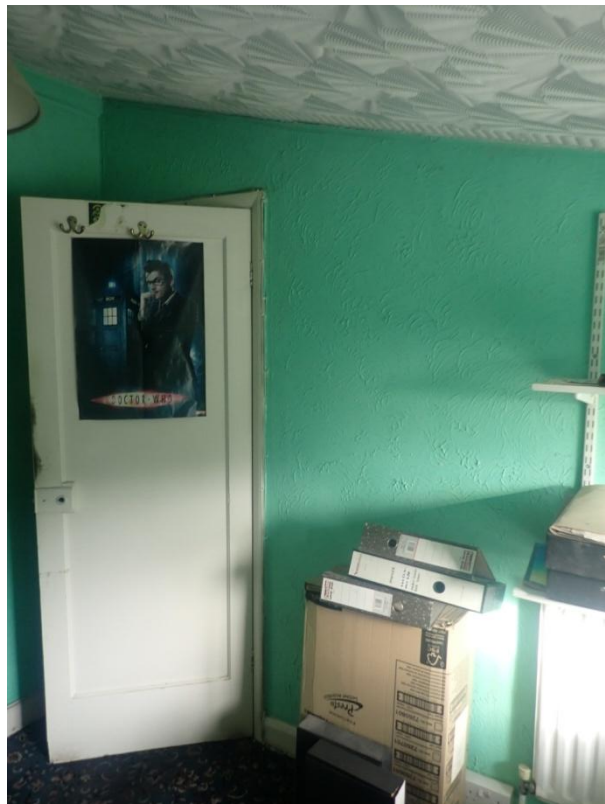
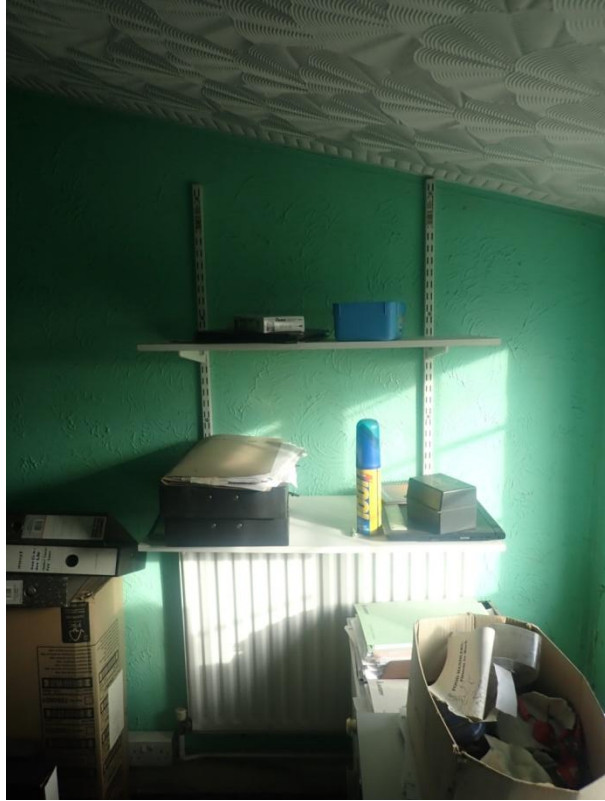


Plate 210: View of the east wall of Cell 11, from the south-west



**Plate 211: View of the east wall of Cell 11, from the south-west**

**Plate 209** features the north wall of **Cell 11**, which has also been rendered over with plasterwork. This is also the internal dividing wall with the adjoining **Cell 12** to the north.

**Plates 210 and 211** show the east wall of **Cell 11**, which has similarly been rendered over with plasterwork. To the left (north), is the inner face of the west facing entrance opening, which leads onto the first floor landing of **Cell 10**. This opening is occupied by a timber frame of a head and surrounds and by a modern panelled timber door.

**Plates 212-222** provide a number of views of the first floor landing of **Cell 10** within the interior of **Building 2**.

**Plate 212** features the lower levels of the first floor landing at the northern end of **Cell 10**. This shows the flooring here which is covered with modern carpeting.

**Plate 213** shows the southern portion of the east wall of the first floor landing. This east wall has been rendered over with plasterwork. Horizontal timber skirting boards are at its base.

**Plates 214 and 215** present views of the north wall of this first floor landing. This north wall has been rendered over with plasterwork. Horizontal timber skirting boards are at its base.

**Plate 216** furnishes a view of the ceiling of the first floor landing of **Building 2**. This is covered with lining paper and reflects the low angled half gabled roof of the above rear outshut.



**Plate 212: View of the first floor landing of Building 2, from the south-west**



**Plate 213: View of part of the east wall of the first floor landing of Building 2, from the south-west**

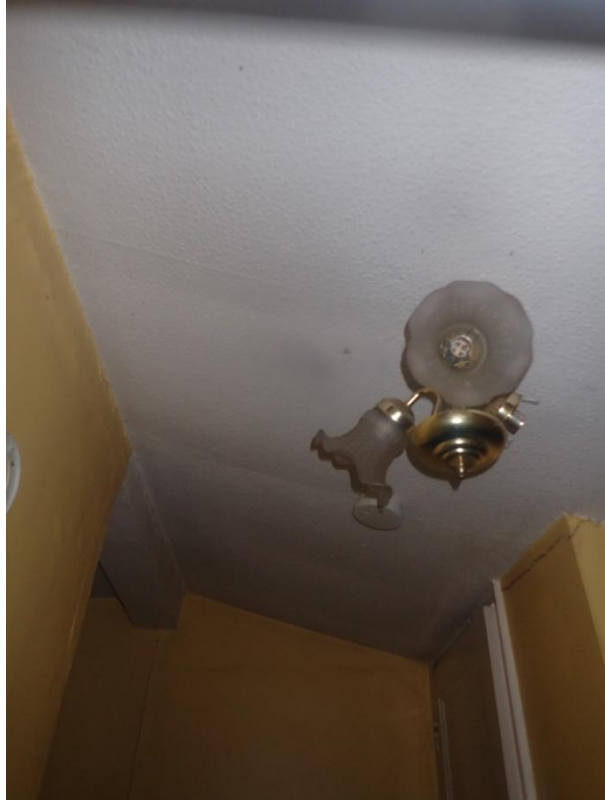


**Plate 214: View of the north wall of the first floor landing of Building 2, from the south-west**



**Plate 215: View of the north wall of the first floor landing of Building 2, from the south-west**





**Plate 216: View of the ceiling of the first floor landing of Building 2, from the south-west**



**Plate 217: View of the flooring of the upper levels of the first floor landing of Building 2, from the north-west**



**Plate 218: View of the south wall and of the ceiling of the first floor landing of Building 2, from the north-west**

**Plate 217** provides a view of the flooring of the upper levels of the first floor landing of **Building 2**. This is covered by modern carpeting

**Plate 218** provides a view of the south wall of the first floor landing, part of which has been rendered over with plasterwork. Timber skirting boards occur at its base. Much of this south wall is occupied by a south facing entrance opening that extends onto the first floor bathroom or **Cell 14** to the south. This opening is occupied by a timber frame of a head and surrounds and a simple panelled timber door.

**Plates 219 and 221** feature the ceiling of this first floor landing, which is clearly in two parts. These are bisected by an east-west orientated principal horizontal timber joist. To the south of this joist, the angle of this ceiling reflects the low angle of the half gabled roof structure of the above rear outshut. To the north of this joist, the ceiling here has been rendered over with plasterwork and is part of the original main body of the public house. The joist denotes the boundary between this building and the rear outshut.

**Plate 220** provides a view of the north wall of this first floor landing, part of which has been rendered over with plasterwork. Timber skirting boards occur at its base. A north facing entrance opening is also shown, which is occupied by a timber frame of a head and surrounds and a door that is composed of a series of vertical tongued and grooved timber planks. The door is attached to the frame by two metal strap hinges. This leads onto **Cell 13** to the north. To the left (west), is a second west facing entrance opening that is occupied by a timber frame of a head and surrounds. This extends onto **Cell 12** to the west.

**Plate 222** features the northern portion of the east wall of this first floor landing, which has been rendered over with plasterwork. Timber skirting boards occur at its base.



**Plate 219: View of the ceiling of the first floor landing of Building 2, from the north-west**



**Plate 220: View of the north wall of the first floor landing of Building 2, from the south-east**



**Plate 221: View of the ceiling of the first floor landing of Building 2, from the south-east**



**Plate 222: View of the east wall of the first floor landing of Building 2, from the south-west**

For the purposes of this survey, the first of the first floor bedrooms within the first floor of the original main body of the public house, is designated as **Cell 12**. This is situated to the north of **Cell 11**.



**Plate 223: View of the flooring of Cell 12, from the south-east**



**Plate 224: View of the flooring of Cell 12, from the south-east**

**Plates 223 and 224** feature the flooring of **Cell 12**, which is carpeted.

**Plates 225 and 226** provide general views of the interior of **Cell 12** from south-eastern positions.



**Plate 225: General view of the interior of Cell 12, from the south-east**



**Plate 226: General view of the interior of Cell 12, from the south-east**

**Plates 227 and 228** show the nature of the ceiling structure of **Cell 12**, which has been rendered over with modern plasterwork.



**Plate 227: View of the ceiling of Cell 12, from the south-east**



**Plate 228: View of the ceiling of Cell 12, from the south**

**Plates 229 and 232** furnish views of the east wall of **Cell 12**, which is also the internal dividing wall with the adjoining **Cell 13**, to the east. This east wall has been covered over with modern wallpaper. Horizontal timber skirting boards occur at its base. To the right (south), is the inner face of the east facing entrance opening that leads onto the first floor landing. This opening is occupied by a timber frame of a head and surrounds and by a door that is composed of a series of vertical tongued and grooved timber planks that are in turn affixed to an internal framework of horizontal timbers.



**Plate 229:** View of the east wall of Cell 12, from the north-west



**Plate 230** View of the south wall of Cell 12, from the north-west

**Plate 230** presents a view of the south wall of **Cell 12**, which is covered over with modern wallpaper. Horizontal timber skirting boards occur at its base. The angle of the gabled roof of the building may be observed above this south wall.

**Plate 231** presents a view of the north wall of **Cell 12**, which is covered over with modern wallpaper. Horizontal timber skirting boards occur at its base. The central feature of this north wall is the inner face of the first floor north facing window opening that was recorded externally at the North Elevation of the building. The angle of the gabled roof of the building may be observed above this north wall.





**Plate 231: View of the north wall of Cell 12, from the south-west**



**Plate 232: View of the east wall of Cell 12, from the north-west**

**Plates 233-238** provide a number of views from differing vantage points of the west wall of **Cell 12**, much of which is occupied by modern fitted cupboards. Outside of the modern fitted cupboards, the wall is covered with modern wallpaper. Horizontal timber skirting boards occur at its base. **Plates 235 and 236** feature the interiors of the fitted cupboards and feature the plasterwork rendering here.



**Plate 233: View of the west wall of Cell 12, from the south-east**



**Plate 234: View of the west wall of Cell 12, from the south-east**



**Plate 235: View of the west wall of Cell 12, from the south-east**



**Plate 236: View of the west wall of Cell 12, from the south-east**



**Plate 237: View of the west wall of Cell 12, from the north-east**



**Plate 238: View of the west wall of Cell 12, from the north-east**

For the purposes of this survey, the second of the first floor bedrooms within the first floor of the original main body of the public house, is designated as **Cell 13**. This is situated to the east of **Cell 12**.

**Plates 239 and 240** feature the flooring of **Cell 13**, which is carpeted.



**Plate 239: View of the flooring of Cell 13, from the south**



**Plate 240: View of the flooring of Cell 13, from the south-west**

**Plates 241 and 242 provide general views of the interior of Cell 13.**



**Plate 241: General view of the interior of Cell 13, from the south-west**



**Plate 242: General view of the interior of Cell 13, from the south-west**

**Plates 243-245** feature the nature of the ceiling structure of **Cell 13**, which has been rendered over with modern plasterwork.



**Plate 243: View of the ceiling of Cell 13, from the west**



**Plate 244: View of the ceiling of Cell 13, from the south**



**Plate 245: View of the ceiling of Cell 13, from the south-east**



**Plate 246: View of the west wall of Cell 13, from the north-east**

**Plate 246** presents a view of the west wall of **Cell 13**, which has been rendered over with plasterwork. Horizontal timber skirting boards occurs at its base. This is also the internal dividing wall with the adjoining **Cell 12** to the west.

**Plate 247** presents a view of the east wall of **Cell 13**, which is also the internal dividing wall with the adjoining **Cell 2** to the east. This east wall has also been rendered over with plasterwork. Horizontal timber skirting boards occurs at its base. Also shown is part of a chimney breast and to the left (north), is the inner face of an east facing entrance opening that extends onto **Cell 2** to the east. This opening is occupied by a timber frame of a head and surrounds and by a timber door that is composed of a series of vertical tongued and grooved timber planks that are attached to an internal framework of horizontal timbers.





**Plate 247: View of the east wall of Cell 13. from the north-west**



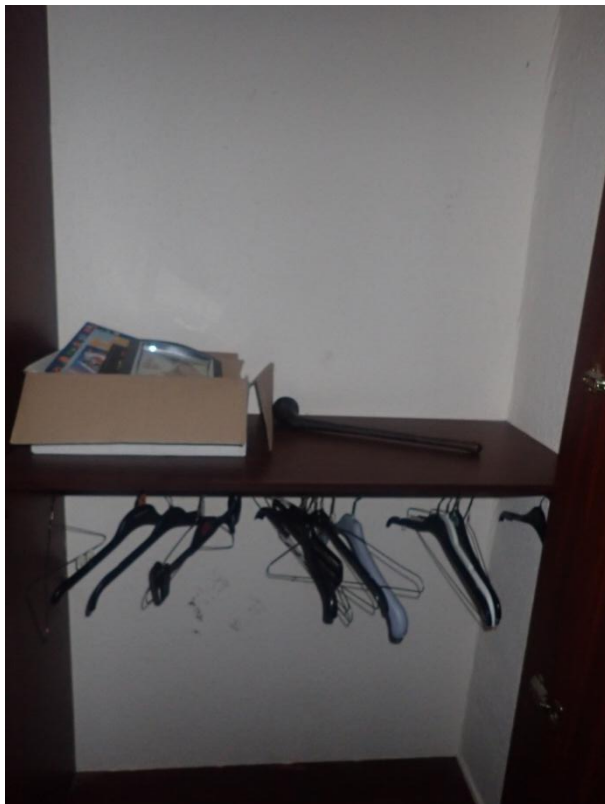
**Plate 248: View of the north wall of Cell 13, from the south-west**

**Plate 248** features the north wall of **Cell 13**, which has been rendered over with plasterwork. Horizontal timber skirting boards occurs at its base. Also shown is the inner face of the first floor north facing window opening that was recorded externally at the North Elevation of this building.

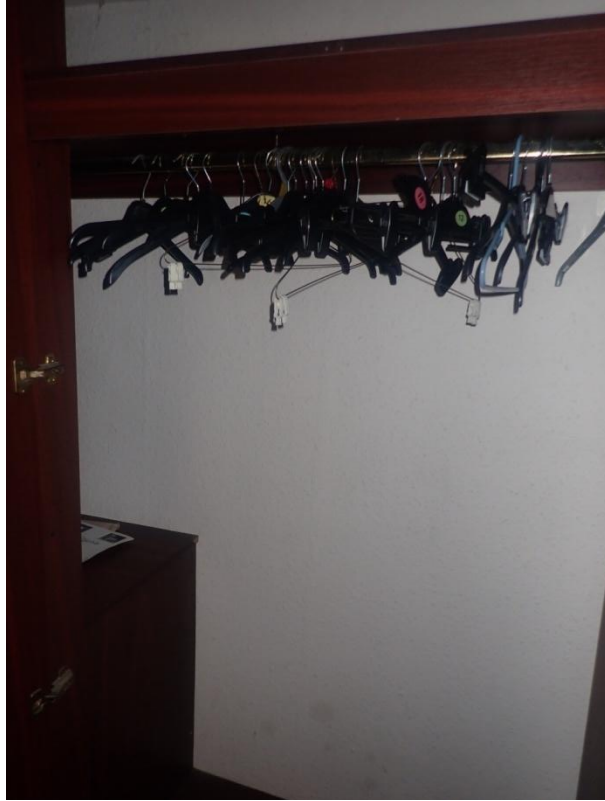
**Plates 249-252** feature the south wall of **Cell 13**, much of which is occupied by modern fitted cupboards. To the right (west), is the inner face of a south facing entrance opening that leads onto the first floor landing. This opening is occupied by a timber frame of a head and surrounds and by a timber door that is composed of a series of vertical tongued and grooved timber planks that are attached to an internal framework of horizontal timbers. **Plates 250-252** feature the interiors of the fitted cupboards, which show modern plasterwork rendering. Horizontal timber skirting boards occurs at its base.



**Plate 249: View of the south-wall of Cell 13, from the north-west**



**Plate 250: View of the south-wall of Cell 13, from the north**



**Plate 251: View of the south-wall of Cell 13, from the north**



**Plate 252: View of the south-wall of Cell 13, from the north**

For the purposes of this survey, the final internal room space within the first floor interior of the rear outshut of **Building 2**, is designated as **Cell 14**. This is situated to the south of **Cell 13** and to the east of the first floor landing and was a bathroom.



**Plate 253: View of the flooring of Cell 14, from the north-west**



**Plate 254: View of the flooring of Cell 14, from the west**

**Plates 253-254 and 256** present several views of the nature of the flooring of **Cell 14**, which is of modern ceramic floor tiling on two levels.

**Plate 255** presents a general view of the interior of **Cell 14** from a south-western perspective.



**Plate 255: General view of the interior of Cell 14, from the west**



**Plate 256: View of the flooring of Cell 14, from the north-east**



**Plate 257: View of the ceiling of Cell 14, from the north-east**



**Plate 258: View of the ceiling of Cell 14, from the north**

**Plates 257-261** furnish a number of views of the nature of the ceiling structure of **Cell 14**, which has been rendered over with modern plasterwork. Its low angle reflects the low angled half gabled roof structure of the above rear outshut. Of particular note is the angled and north-south orientated principal rafter, which has been boxed in.



**Plate 259: View of the ceiling of Cell 14, from the south-west**



**Plate 260: View of the ceiling of Cell 14, from the north-west**



**Plate 261: View of the ceiling of Cell 14, from the north**



**Plate 262: View of the east wall of Cell 14, from the south-west**

**Plate 262** presents a view of the east wall of **Cell 14**, which is covered over with modern ceramic wall tiles.

**Plate 263** features the eastern portion of the north wall of **Cell 14**, which has been covered over with modern wallpaper. This north wall also houses a built in modern airing cupboard, from which the external panel here has been removed. Horizontal timber skirting boards occur at its base.

**Plate 264** shows an alcove which houses a wash hand basin within the north wall of **Cell 14**, which has been covered over with modern wallpaper. Horizontal timber skirting boards occur at its base.





**Plate 263: View of the north wall of Cell 14, from the south-west**



**Plate 264: View of the north wall of Cell 14, from the south-west**



**Plate 265:** View of the north wall of Cell 14, from the south-east



**Plate 266:** View of the west wall of Cell 14, from the north-east

**Plate 265** presents a view of the western portion of the north wall of **Cell 14** and shows the north facing entrance opening that leads onto the first floor landing of **Building 2**. This opening is occupied by a timber frame of a head, surrounds and architrave and by a modern panelled timber door.



Plate 267: View of the north wall of Cell 14, from the north-east



Plate 268: View of the north wall of Cell 14, from the north-west

**Plate 266** features the west wall of **Cell 14**, which has been covered over with modern wallpaper. Horizontal timber skirting boards occur at its base.



**Plate 269:** View of the airing cupboard within the north wall of Cell 14, from the south-east



**Plate 270:** View of the airing cupboard within the north wall of Cell 14, from the south-west

**Plates 267 and 268** show the south wall of **Cell 14**, which has been covered over with modern ceramic wall tiling. Also featured are the slightly recessed inner faces of two south facing first floor window openings that were recorded externally at the South Elevation of this building.

**Plates 269-278** feature the interior of the airing cupboard, which has been built into the north wall of **Cell 14**. The base is of horizontal timber planking. The west side is of timber boarding, which is attached to an internal framework and vertical and horizontal timbers, whilst the northern and eastern sides are original portions of the west and north walls of this first floor bathroom, which

have been rendered over with modern plasterwork. The ceiling inside here has also been rendered over with modern plasterwork.



**Plate 271: View of the airing cupboard within the north wall of Cell 14, from the south-east**



**Plate 272: View of the airing cupboard within the north wall of Cell 14, from the south-west**



**Plate 273: View of the airing cupboard within the north wall of Cell 14, from the south-west**



**Plate 274: View of the airing cupboard within the north wall of Cell 14, from the south-west**



**Plate 275: View of the airing cupboard within the north wall of Cell 14, from the south-west**



**Plate 276: View of the airing cupboard within the north wall of Cell 14, from the south-west**



**Plate 277: View of the airing cupboard within the north wall of Cell 14, from the south-west**



**Plate 278: View of the airing cupboard within the north wall of Cell 14, from the south-west**

### **7.5 The Exterior of Building 3**

**Building 3** is a single storey north-south orientated building, which has a gabled roof with a roof covering of red pantiles. It is bonded to **Building 2** to the east, to **Building 5** to the west and to **Building 4** to the south and south-west.

**Plates 279 and 281** present detailed views of the South Elevation of **Building 3**. The entire wall fabric of this Elevation has been covered over with a modern cement rendering. At ground floor levels is a boarded up south facing window opening. At mid levels are the remains of a former external canopy. It may also be observed that this building is bonded to **Building 4** to the south-west and south.





**Plate 279: View of the South Elevation of Building 3, from the south-east**



**Plate 280: View of Building 3, from the south-west**

**Plates 280** presents a view of a small visible portion of the West Elevation of **Building 3**, which has been covered with the same modern cement rendering and also shows the gabled roof of this building with its roof covering of red pantiles.

**Plates 282 and 283** show the northern end of **Building 3** and in particular the small visible portion of the East Elevation of this building, which has been covered with the same modern cement rendering. Also of particular note is the partially blocked off east facing entrance opening, which is occupied by a timber frame of a head and surrounds and by a panelled timber door. At just below roof levels is modern horizontal Upvc guttering, which extends on to modern vertical Upvc downpipe.



**Plate 281: View of the South Elevation of Building 3, from the south-east**



**Plate 282: View of Building 3, from the north-east**



**Plate 283: View of Building 3, from the north-east**



**Plate 284: View of the North Elevation of Building 3, from the north-west**

**Plates 284-286** present several views of the North Elevation of **Building 3**. Here also, the entire wall fabric of this Elevation has been covered over with the same modern cement rendering. Also featured is a north facing ground floor window opening, which is probably an original feature and which is occupied by a modern glazed Upvc window.



**Plate 285: View of the North Elevation of Building 3, from the north-west**



**Plate 286: View of the North Elevation of Building 3, from the north-east**



**Plate 287: View of the North Elevation of Building 3, from the west**

**Plate 287** presents a view of a small portion of the West Elevation of this building. Here also, the entire wall fabric of this Elevation has been covered over with the same modern cement rendering. Also shown is a small section of modern horizontal Upvc guttering that leads onto a further modern vertical Upvc downpipe.

### **7.6 The Interior of Building 3**

For the purposes of this survey, the single internal room space within the ground floor interior of **Building 3**, is designated as **Cell 15**. This currently comprises the main public lounge area to the public house and is situated to the west of **Cells 5 and 6**.

**Plates 288 and 289** present several general views of the interior of **Cell 15** from southern perspectives.

**Plates 290 and 291** furnish several images of the flooring of **Cell 15**, which has been covered with modern carpeting. A series of modern ceramic floor tiles occur at the public bar area.

**Plates 292-294** present several further general views of the interior of **Cell 15** from different northern positions.

**Plates 295-297** feature further views of the nature of the flooring of **Cell 15**.



**Plate 288: General view of the interior of Cell 15, from the south-east**



**Plate 289: General view of the interior of Cell 15, from the south**



**Plate 290: View of the flooring of Cell 15, from the south-east**



**Plate 291: View of the flooring of Cell 15, from the south**



**Plate 292: General view of the interior of Cell 15, from the north-west**



**Plate 293: General view of the interior of Cell 15, from the north-east**





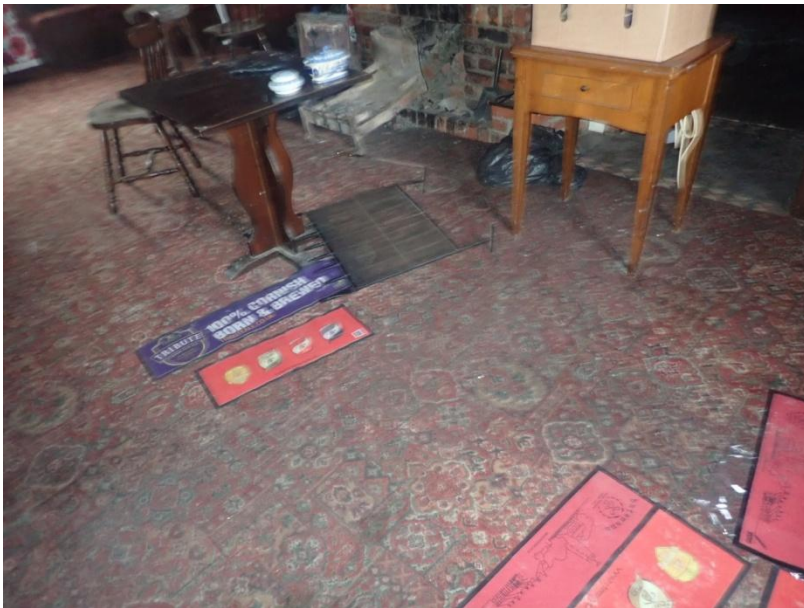
**Plate 294: General view of the interior of Cell 15, from the north-east**



**Plate 295: View of the flooring of Cell 15, from the north-west**



**Plate 296: View of the flooring of Cell 15, from the north-east**



**Plate 297: View of the flooring of Cell 15, from the north-east**

**Plates 298-303** provide a number of views from differing vantage points of the nature of the ceiling structure of **Cell 15**. This consists of a series of east-west orientated and moulded horizontal timber joists. These provide support to the first floor, floor covering of horizontal timber planking, which are on a different north-south alignment.



**Plate 298: View of the ceiling of Cell 15, from the north-west**



**Plate 299: View of the ceiling of Cell 15, from the north-east**



**Plate 300: View of the ceiling of Cell 15, from the north-east**



**Plate 301: View of the ceiling of Cell 15, from the south**



**Plate 302: View of the ceiling of Cell 15, from the south-west**



**Plate 303: View of the ceiling of Cell 15, from the west**

**Plate 304** presents a view of the north wall of **Cell 15**. This has been covered with modern wallpaper. The lower levels have modern timber panelling attached to the wall fabric along with modern soft furnishings/seating. Also featured is the inner face of the ground floor north facing window opening that was recorded externally at the North Elevation of this building.



**Plate 304: View of the north wall of Cell 15, from the south-east**



**Plate 305: View of the south wall of Cell 15, from the north-east**

**Plates 305-307** present several views of the south wall of **Cell 15**. This has been covered with modern wallpaper. The lower levels have modern timber panelling attached to the wall fabric along with modern soft furnishings/seating. Horizontal timber skirting boards occur at its base. Also featured is the inner face of a south facing ground floor window opening that was recorded externally at the South Elevation of this building. A low partition bisects the seating here. At the northern end of the partition is a vertical timber which extends upwards to the ceiling. To the right (west), are the inner faces of a south facing entrance opening that is occupied by a timber frame of a head and surrounds and a modern panelled timber door along with the inner face of an adjacent south facing window opening with a timber window frame of a head and surrounds and a modern glazed timber casement window. Both openings were originally external, but are now within the interior of **Building 4**.



Plate 306: View of the south wall of Cell 15, from the north



Plate 307: View of the south wall of Cell 15, from the north-west



**Plate 308: View of the west wall of Cell 15, from the south-east**



**Plate 309: View of the west wall of Cell 15, from the south-east**

**Plates 308-311** present a number of views of the west wall of **Cell 15**, much of which is covered with wallpaper. This is also the internal dividing wall with the adjoining **Cells 16-18**. At the northern and southern ends are further modern soft furnishings/seating at the lower levels. The central feature of this west wall is the vertical brick fireplace backing. The brickwork here is composed of courses of brick stretchers in Stretcher Bond. At the base of the fireplace backing is a fireplace/surround with a brickwork base topped with timber to either side. To the right (north), is an open west facing access into the adjoining **Cell 18** of **Building 5**. This opening is flanked to either side with brickwork in Stretcher Bond and above the opening is an horizontal timber lintel which is inserted into the fabric of the west wall. To the left (south), is a second open access that extends onto the adjoining **Cell 16** of **Building 4**. This further west facing opening is occupied by a wide timber frame of a head, surrounds and architrave.





Plate 310: View of the west wall of Cell 15, from the north-east



Plate 311: View of the west wall of Cell 15, from the north-east



**Plate 312: View of the east wall of Cell 15, from the north-west**



**Plate 313: View of the east wall of Cell 15, from the north-west**

**Plates 312-316** furnish a number of views of the east wall of **Cell 15**, which also houses the front face of the public bar with its vertical timber panelling and timber counter top. The bar opening itself is edged with vertical timbers to either side with a curved head also in timber. The remainder of this east wall, which is also the internal dividing wall with the adjoining **Cell 6** to the east, has been covered with modern wallpaper with modern soft furnishings/seating at the lower levels. To the right (south), is the east facing open access that leads onto the adjoining **Cell 5** to the east. Above this opening is an horizontal timber lintel which is inserted into the fabric of the east wall.



Plate 314: View of the east wall of Cell 15, from the north-west



Plate 315: View of the east wall of Cell 15, from the south-west



**Plate 316: View of the east wall of Cell 15, from the west**

#### **7.7 The Exterior of Building 4**



**Plate 317: View of the South Elevation of Building 4, from the south-east**

**Plates 317-320** present several views from various southern positions of the South Elevation and a small section of the East Elevation of this building. **Building 4** is bonded to **Building 3** to the east and north-east, to **Building 5** to the north and to **Building 6** to the west. **Building 4** would appear to be a modern addition to this public house complex. It is of one storey in height and possesses a low angled half gabled roof with a mix of roof coverings of corrugated metal sheeting and of corrugated plastic roof sheeting. The entire wall fabric of these Elevations has been covered over with modern cement rendering. At just below roof levels is modern horizontal Upvc guttering that extends onto a slightly off centre vertical modern Upvc downpipe. Also featured are two south facing window openings, both of which have been entirely boarded over. Within the small section of the East Elevation is a boarded up east facing entrance opening.



**Plate 318: View of the South Elevation of Building 4, from the south-west**



**Plate 319: View of the South Elevation of Building 4, from the south-east**



**Plate 320: View of the South Elevation of Building 4, from the south-east**

#### **7.8 The Interior of Building 4**

For the purposes of this survey, the first of the internal ground floor spaces within the interior of **Building 4**, is designated as **Cell 16**. This functioned as a ground floor corridor linking a games room or **Cell 24** to the west with the public lounge bar or **Cell 15** to the east.



**Plate 321: General view of the interior of Cell 16, from the north-east**



**Plate 322: General view of the interior of Cell 16, from the south-west**



**Plate 323: View of the flooring of Cell 16, from the south-west**

**Plates 321 and 322** present general views from different vantage points of the interior of **Cell 16**.

**Plate 323** features the flooring of **Cell 16**, which is covered with modern carpeting.



**Plate 324: View of the ceiling of Cell 16, from the south-west**



**Plate 325: View of the ceiling of Cell 16, from the north-east**

**Plates 324-325** provide views of the nature of the ceiling structure of **Cell 16**, which has been rendered over with plasterwork. **Plate 320** also features a small timber hatch, which provided access into the roof space of **Building 4**.

**Plate 326** furnishes a detailed view of the west wall of **Cell 16**. Most of the wall fabric has been covered over with modern wallpaper within a framework of vertical and horizontal timbers, whilst the lower levels of the wall have timber panelling. The central feature of this west wall is the west facing entrance opening, which extends onto a former games room or **Cell 24** and the interior of **Building 6**. This opening is occupied by a timber frame of a head and surrounds.





**Plate 326: View of the west wall of Cell 16, from the north-east**



**Plate 327: View of the eastern end of Cell 16, from the south-west**



**Plate 328: View of the north wall of Cell 16, from the south-west**



**Plate 329: View of the south wall of Cell 16, from the north-east**



**Plate 330: View of the south wall of Cell 16, from the north-west**

**Plate 327** features the eastern end of **Cell 16**, with its open access into the interior of **Cell 15** to the east or the former public lounge bar of the public house. This image shows the inner face of the access opening, which is contained within a wide timber frame of a head and one surround. To the left (north) is a small section of walling, which has been covered with modern wallpaper with timber panelling at its lower levels.

**Plate 328** provides a view of the north wall of **Cell 16**, much of which has been covered with modern wallpaper within a framework of vertical and horizontal timbers, whilst the lower levels of the wall have timber panelling.

**Plates 329 and 330** show the south wall of **Cell 16**, which is dog-legged. Much of this north wall has been covered with modern wallpaper within a framework of vertical and horizontal timbers, whilst the lower levels of the wall have timber panelling. To the east is further modern soft furnishings/seating.

**Plates 331-336** present a number of views of the roof space above **Cell 16**. This is a relatively simple timber framework of north-south orientated angled timber rafters and east-west aligned horizontal timber purlins to which is attached the roof covering of sheets of corrugated metal. Of particular note is the exposed brickwork wall fabric to the north, which is part of the upper levels of the South Elevation of the adjoining **Building 5**. The northern ends of the timber rafters of this roof structure are inserted into this wall fabric, which is mostly composed of courses of brick stretchers and of further courses of mixed brick headers and brick stretchers.



**Plate 331: View of the roof space above Cell 16, from the north-east**



**Plate 332: View of the roof space above Cell 16, from the north-east**



**Plate 333: View of the roof space above Cell 16, from the south-east**



**Plate 334: View of the roof space above Cell 16, from the north-east**



**Plate 335: View of the roof space above Cell 16, from the north-east**



**Plate 336: View of the roof space above Cell 16, from the north-east**

For the purposes of this survey, the second of the internal spaces within the ground floor interior of **Building 4**, is designated as **Cell 17**. This functioned as the former men's toilets to the public house complex. **Cell 17** is situated to the south of **Cell 16** and to the south and south-west of **Cell 15**.

**Plates 337-354** feature the interior of the Corridor which leads onto **Cell 17**.

**Plates 337 and 340** feature the nature of the flooring of the Corridor, which is of modern concrete.



**Plate 337: View of the flooring of the Corridor leading to Cell 17, from the north-east**

**Plates 338 and 342** feature the nature of the roofing structure of the Corridor, which is composed of modern plastic sheeting attached to a framework of low angled timber rafters and horizontal timber purlins.

**Plate 339** presents a general view of the interior of the Corridor from a north-eastern perspective.

**Plate 341** provides a further general view of the interior of the Corridor from a different south-western position.

**Plate 343** features a portion of the north wall of the Corridor. This is also part of the former external South Elevation to **Building 3**. This is probably constructed of brickwork, which has been covered over with modern cement rendering. Also shown is the outer face of south facing ground floor window and entrance openings that were recorded internally within **Cell 15** of **Building 3**.

**Plates 344 and 345** feature an alcove within the northern side of the Corridor. The eastern face of which is part of the former external West Elevation to **Building 3**. This is also probably constructed of brickwork, which has been covered over with modern cement rendering. Adjoining this, the north face of this alcove is an external face to **Cell 16** of **Building 4**. This is also probably constructed of brickwork, which has also been covered over with modern cement rendering. Above this alcove is a small portion of the low angled half gabled roof structure of **Building 4**, with its roof covering of sheets of corrugated metal that is supported on a timber framework of low angled timber rafters and horizontal timber purlins.

**Plates 346-348** present several views of the external eastern and southern faces of **Cell 17**. The brickwork is composed of courses of brick stretchers in Stretcher Bond. A small glazed east facing timber casement window is also featured within the eastern face.



**Plate 338: View of the roofing structure of the Corridor leading to Cell 17, from the north-east**



**Plate 339: General view of the interior of the Corridor leading to Cell 17, from the north-east**





**Plate 340: View of the flooring of the Corridor leading to Cell 17, from the south-west**



**Plate 341: General view of the interior of the Corridor leading to Cell 17, from the south-west**



**Plate 342: View of the roofing structure of the Corridor leading to Cell 17, from the south-west**



**Plate 343: View of the north wall of the Corridor leading to Cell 17, from the south-west**



**Plate 344: View of the alcove within the north wall of the Corridor leading to Cell 17, from the south**



**Plate 345: View of the alcove within the north wall of the Corridor leading to Cell 17, from the south**



**Plate 346: View of the exterior of Cell 17 within the Corridor leading to Cell 17, from the south-east**



**Plate 347: View of the exterior of Cell 17 within the Corridor leading to Cell 17, from the south-east**



**Plate 348: View of the exterior of Cell 17 within the Corridor leading to Cell 17, from the north-east**



**Plate 349: View of the west wall of the Corridor leading to Cell 17, from the north-east**



**Plate 350: View of the east wall of the Corridor leading to Cell 17, from the south-west**



**Plate 351: View of the south wall of the Corridor leading to Cell 17, from the north-east**



**Plate 352:** View of the south wall of the Corridor leading to Cell 17, from the north



**Plate 353:** View of the south wall of the Corridor leading to Cell 17, from the north

**Plate 349** provides a view of the west wall or the western end of the Corridor. The wall fabric here is composed of courses of modern breeze blockwork.

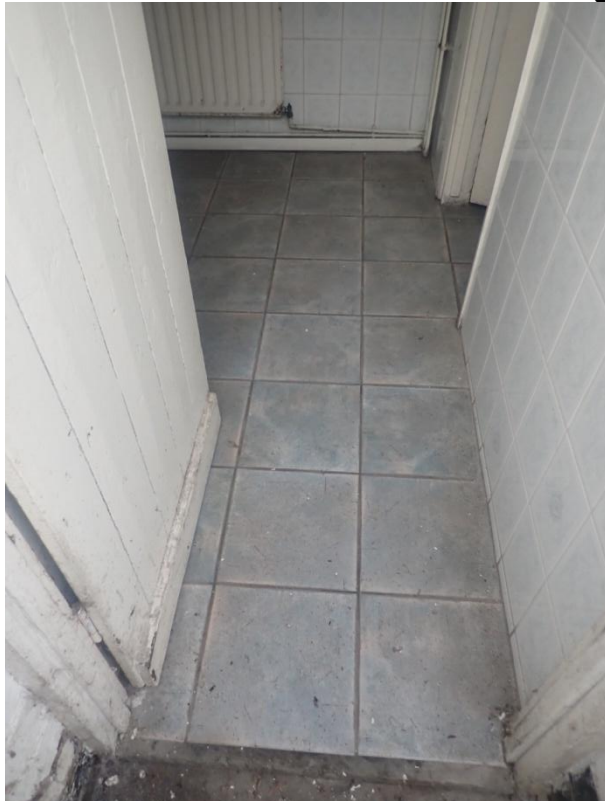
**Plate 350** shows the east wall or the eastern end of the Corridor. The wall fabric here is composed of courses of modern breeze blockwork. Also featured is the inner face of the east facing entrance opening that was recorded externally at the East Elevation of this building and which is boarded over. This inner face is occupied by a timber frame of a head and surrounds and by an unglazed modern glass panelled timber door.

**Plates 351-354** furnish several images of the south wall of the Corridor, the wall fabric of which is composed of courses of modern breeze blockwork. Also featured is the inner face of a south

facing window opening that was recorded externally at the South Elevation of this building, and which is boarded over. This is a modern glazed timber casement window.



**Plate 354: View of the south wall of the Corridor leading to Cell 17, from the north-east**



**Plate 355: View of the interior of Cell 17, from the south-east**





**Plate 356: View of the interior of Cell 17, from the south-east**



**Plate 357: View of the interior of Cell 17, from the north-west**

**Plates 355-374** present a large number of images of the interior of **Cell 17**. All of the walls and the floors of **Cell 17** have been laid with modern ceramic wall and floor tiling. The ceilings of **Cell 17** have been rendered over with modern plasterwork.



**Plate 358: View of the interior of Cell 17, from the north**



**Plate 359: View of the interior of Cell 17, from the north-east**

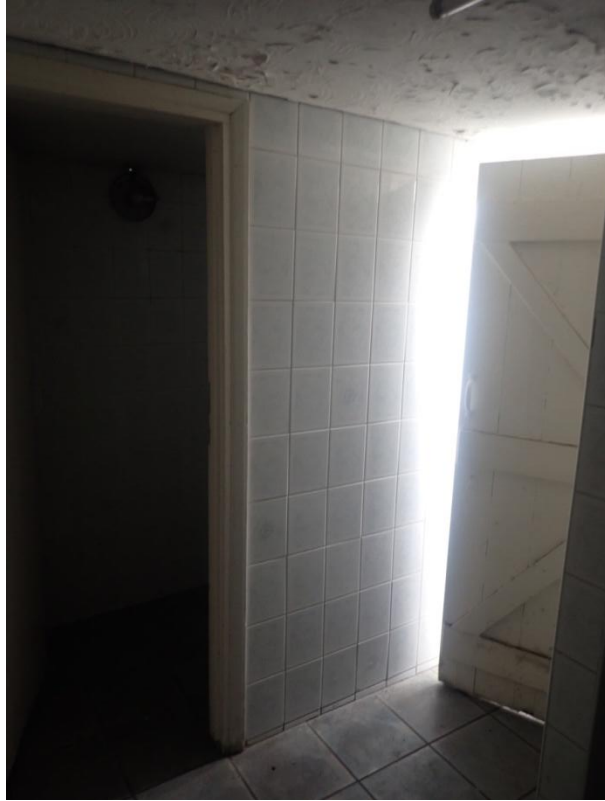


**Plate 360: View of the interior of Cell 17, from the south-east**



**Plate 361: View of the interior of Cell 17, from the north-east**

**Plate 361** presents a view of the inner face of a modern glazed timber casement window with a timber frame of a head and surrounds.



**Plate 362: View of the interior of Cell 17, from the north-west**



**Plate 363: View of the interior of Cell 17, from the south-west**

**Plates 362-364** also show the inner face of the main south facing entrance opening into **Cell 17**, which is occupied by a timber frame of a head and surrounds and by a timber door that is composed of a series of vertical tongued and grooved timber planks that are affixed to an internal timber framework of angled and horizontal timbers. The entrance opening into the main toilet is also featured and is occupied by a timber frame of a head and surrounds and by a second door

that is also composed of a series of vertical tongued and grooved timber planks that are affixed to an internal timber framework of angled and horizontal timbers.



**Plate 364: View of the interior of Cell 17, from the south-west**



**Plate 365: View of the interior of Cell 17, from the south-east**



**Plate 366: View of the interior of Cell 17, from the north-west**



**Plate 367: View of the interior of Cell 17, from the north-west**



**Plate 368: View of the interior of Cell 17, from the north-west**



**Plate 369: View of the interior of Cell 17, from the north-west**



**Plate 370: View of the interior of Cell 17, from the north-west**



**Plate 371: View of the interior of Cell 17, from the south-east**





**Plate 372: View of the interior of Cell 17, from the north-west**



**Plate 373: View of the interior of Cell 17, from the south-east**



**Plate 374: View of the interior of Cell 17, from the south-east**

#### **7.9 The Exterior of Building 5**



**Plate 375: View of the roofing of Building 5, from the south-east**

**Building 5** is a single storey building of this former public house complex. This has a gabled roof with a roof covering of red pantiles and a vertical brick chimney stack at the eastern end of the roof. The southern side of this roof is featured in detail on **Plate 375**. The chimney stack is

composed of courses of courses of brick stretchers and is topped with a ceramic chimney pot. **Building 5** is bonded to **Building 3** to the east and to **Buildings 4 and 6** to the south.



**Plate 376: View of the North Elevation of Building 5, from the north-west**



**Plate 377: View of the North Elevation of Building 5, from the north-east**

**Plates 376 and 377** present detailed views of the North Elevation of **Building 5**. The wall fabric of this Elevation has been entirely covered over with modern cement rendering. The northern side of the gabled roof with its roof covering of red pantiles is also featured. At just below roof levels is modern horizontal Upvc guttering.

#### **7.10 The Interior of Building 5**

For the purposes of this survey, the first and easternmost of the internal spaces within the ground floor interior of **Building 5**, is designated as **Cell 18**. The interior of **Building 5** appears to have

been much altered. **Cell 18** formerly functioned as an extension to the public lounge bar of the former public house. **Cell 18** is situated to the west of **Cell 15** and to the north of **Cell 16**.



**Plate 378: View of the flooring of Cell 18, from the north-east**



**Plate 379: View of the flooring of Cell 18, from the south-east**

**Plates 378 and 379** illustrate the nature of the flooring of **Cell 18**, which has been covered with modern carpeting.

**Plates 380-382** show the nature of the ceiling structure of **Cell 18**, which has been rendered over with modern plasterwork.



**Plate 380: View of the ceiling of Cell 18, from the south-east**



**Plate 381: View of the ceiling of Cell 18, from the north-east**



**Plate 382: View of the ceiling of Cell 18, from the north-west**



**Plate 383: General view of the interior of Cell 18, from the south-east**

**Plates 383 and 384 present general views of the interior of Cell 18.**



**Plate 384: General view of the interior of Cell 18, from the south-east**



**Plate 385: View of the west wall of Cell 18, from the south-east**

**Plate 385** features the west wall of **Cell 18**, which has been covered over with modern wallpaper. Plaster cornice work may be seen at the uppermost levels. The lower levels of the west wall are occupied by modern soft furnishings/seating. This is also the internal dividing wall with the adjoining **Cells 21 and 22** to the west.

**Plates 386 and 387** show the east wall of **Cell 18**, which is also the internal dividing wall with the adjoining **Cell 15** of **Building 3** to the east. This east wall has also been covered over with modern wallpaper. Plaster cornice work may be seen at the uppermost levels. The lower levels of the east wall are occupied by modern soft furnishings/seating. The central features of this east wall are the chimney breast to the right (south) and the open access into the adjoining **Cell 15** to the east. This open access is flanked to either side by brickwork composed of courses of brick

stretchers. Above the opening is an horizontal timber lintel, which has been incorporated into the wall fabric here.



**Plate 386:** View of the east wall of Cell 18, from the north-west



**Plate 387:** View of the east wall of Cell 18, from the north-west

**Plate 388** provides a view of the south wall of **Cell 18**, which is also the internal dividing wall with the adjoining **Cell 16** to the south. This south wall has also been covered over with modern wallpaper. Plaster cornice work may be seen at the uppermost levels. The lower levels of the south wall are occupied by modern soft furnishings/seating.





**Plate 388: View of the south wall of Cell 18, from the north-west**



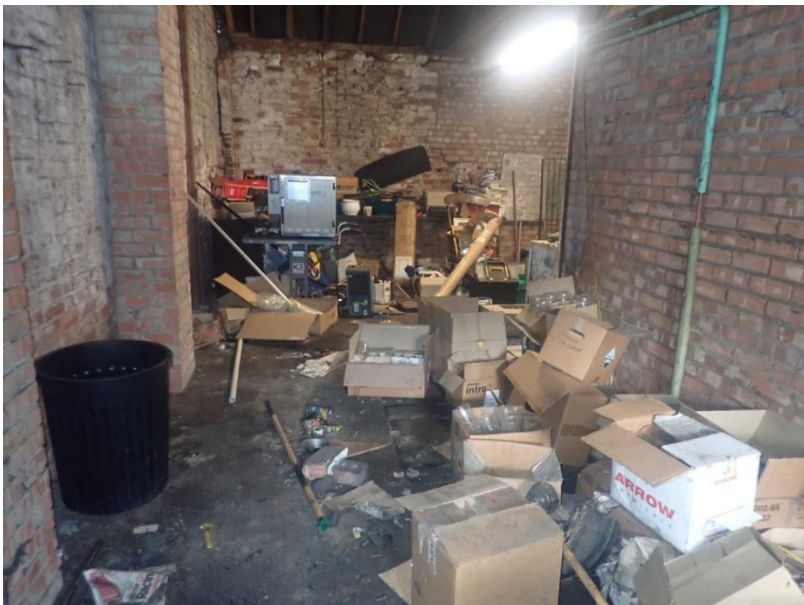
**Plate 389: View of the north wall of Cell 18, from the south-east**

**Plates 389 and 390** show the north wall of **Cell 18**, which has also been covered over with modern wallpaper. Plaster cornice work may be seen at the uppermost levels. The lower levels of the north wall are occupied by modern soft furnishings/seating and by horizontal timber skirting boards at the base.



**Plate 390: View of the north wall of Cell 18, from the south-east**

For the purposes of this survey, the westernmost of the internal spaces within the ground floor interior of **Building 5**, is designated as **Cell 19**.



**Plate 391: General view of the interior of Cell 19, from the south-east**

**Plate 391** presents a general view of the interior of **Cell 19**, from a south-western position.

**Plates 392-394** feature the nature of the flooring of **Cell 19**, which is of modern concrete.



**Plate 392: View of the flooring of Cell 19, from the south**



**Plate 393: View of the flooring of Cell 19, from the south-west**



**Plate 394:** View of the flooring of Cell 19, from the south-east



**Plate 395:** View of the south wall of Cell 19, from the north-west

**Plate 395** provides a view of the probable remnants of the former south wall of **Cell 19**, and hence of this western portion of **Building 5**. This surviving remnant is of brick, which is composed of courses of brick stretchers in Stretcher Bond. To the left (east) and built into this wall fabric is a south facing entrance opening, which extends onto the adjoining **Cell 24** of **Building 6**. This opening is occupied by a timber frame of a head and surrounds and by a modern panelled timber door.



**Plate 396: View of the north wall of Cell 19, from the south-west**



**Plate 397: View of the north wall of Cell 19, from the south-east**

**Plates 396 and 397** provide detailed views of the north wall of **Cell 19**. The detail of the brickwork wall fabric of the western portion of this north wall has become partially obscured by being covered with paintwork. The eastern portion of this north wall has been the subject of modern repair and the brickwork here is composed of 2-3 courses of brick stretchers alternating with single courses of brick headers in a variation of English Garden Wall Bond. Horizontal timber wallplates extend along the top of this north wall.

**Plates 398 and 399** present detailed images of the west wall of **Cell 19**. Much of the detail of the brickwork wall fabric of this west wall has become obscured by being covered with paintwork. However, it is still possible to discern individual courses of brick headers and of brick stretchers. The western ends of the horizontal timber purlins of the overlying roof structure may be seen to be inserted into the uppermost levels of this brickwork wall fabric.



**Plate 398: View of the west wall of Cell 19, from the north-east**



**Plate 399: View of the west wall of Cell 19, from the north-east**



**Plate 400: View of the east wall of Cell 19, from the south-west**



**Plate 401: View of the east wall of Cell 19, from the south-west**

**Plates 400-402** furnish several detailed views of the east wall of **Cell 19**. Here also, much of the detail of the brickwork wall fabric of this east wall has become obscured by being covered with paintwork. However, it is still possible to discern individual courses of brick headers and of brick stretchers. The eastern ends of the horizontal timber purlins of the overlying roof structure may be seen to be inserted into the uppermost levels of this brickwork wall fabric. To the right (south), is a probable infilled east facing former internal window opening. This former opening has been

infilled with brick. The detail here has also become obscured by being covered over with paintwork, though individual courses of brick stretchers may be observed. This former opening has the remnants of a timber frame of a head and surrounds incorporated into the brickwork wall fabric here. To the left (north), and at ground floor levels is an east facing entrance opening, which extends onto **Cell 21** to the east. This opening is occupied by a timber frame of a head and surrounds and by a modern metal gridded door. It may also be seen that a mezzanine floor has been added to this portion of **Building 5** and a further east facing mezzanine entrance opening may also be observed. This second opening is also occupied by a timber frame of a head, surrounds and a timber threshold at the base of the opening. This leads onto the adjoining **Cell 20** to the east.



**Plate 402: View of the east wall of Cell 19, from the south-west**



**Plate 403: View of the roof supporting structure of Cell 19, from the south-west**





**Plate 404: View of the roof supporting structure of Cell 19, from the south-west**



**Plate 405: View of the roof supporting structure of Cell 19, from the south-east**

**Plates 403-408** present a number of views from differing positions of the nature of the roof supporting structure of **Cell 19** and hence of the western end of **Building 5**. This structure comprises a framework of timber rafters and of horizontal timber purlins that extend along both sides of this structure along with further horizontal timber purlins at the roof apex. The upper ends of the rafters are attached to the purlins at the roof apex, whilst their basal ends are attached to the timber wallplates that extend along the top of the north wall. At the upper levels and attached to the rafters are several horizontal timber collars. At the lower levels, and also affixed to the rafters are several horizontal timber tie beams. Both the collars and the tie beams provide additional support and reinforcement to this structure.



**Plate 406: View of the roof supporting structure of Cell 19, from the south-east**



**Plate 407: View of the roof supporting structure of Cell 19, from the south-west**



**Plate 408: View of the roof supporting structure of Cell 19, from the north-east**