

Friends Meeting House, Garstang

Calder House Lane, Garstang, PR3 1ZE

National Grid Reference: SD 49866 43752



Statement of Significance

High significance as a good example of an early nineteenth-century meeting house retaining original interior features, arranged to a typical, distinctive floor plan. It has an attractive rural setting within a burial ground, and there are historical associations with the local industrialist Jackson family.

Evidential value

The building is of one principal phase and is associated with a burial ground. The fabric of the building and the burials could yield further evidence about the history of the site and its associations, while the stable and coach house

addition is evidence of continuing use of the site and investment in it. It has medium evidential value.

Historical value

The building substantially retains its exterior appearance and historic internal layout. It is within a contemporary burial ground and in close proximity to Calder House, a former home of the Jackson family, local industrialists and Quakers who were patrons of the meeting. The building and burial ground have high historical significance.

Aesthetic value

The building has high aesthetic value as a good example of a modest vernacular meeting house, representative of the building type. Its aesthetic value is enhanced by the burial ground and rural setting.

Communal value

The meeting house is in largely Quaker use and it is remotely sited, so is not extensively used by other groups, however it is an important element of the historical character of the area and has medium communal value.

Part 1: Core data

- 1.1 Area Meeting: *Lancashire Central & North*
- 1.2 Property Registration Number: *0013490*
- 1.3 Owner: *Friends' Trust*
- 1.4 Local Planning Authority: *Wyre Council*
- 1.5 Civil parish: *Barnacre-with-Bonds*
- 1.6 Historic England locality: *North West*
- 1.7 Listed status: *II*
- 1.8 NHLE: *1361911*
- 1.9 Conservation Area: *No*
- 1.10 Scheduled Ancient Monument: *No*
- 1.11 Heritage at Risk: *No*
- 1.12 Date(s): *1828-30*
- 1.13 Architect (s): *Not established*
- 1.14 Date of visit: *26 June 2015*
- 1.15 Name of report author: *Clare Hartwell*
- 1.16 Name of contact made on site: *James Eddington*
- 1.17 Associated buildings and sites: *A coach house and stable beside the meeting house*
- 1.18 Attached burial ground: *Yes, still in use*

1.19 Bibliographic references:

Beeden, J. M., 'Religious denominations in Calder Vale in the mid-19th century' *Contrebis* (Lancaster Historical and Archaeological Society, 1982), Vol. 10, pp. 40-46

Butler, D. M., *The Quaker Meeting Houses of Britain* (London: Friends Historical Society, 1999), vol. 1, pp. 295-6

Hartwell C., & Pevsner, N., *The Buildings of England: Lancashire* (New Haven and London: Yale University Press 2009) p.98

<http://www.lancsquakers.org.uk/garstang.php>

Anthony Hughes, Local Meeting Survey, March 2015

Part 2: The Meeting House & Burial Ground: history, contents, use, setting and designation

2.1. Historical background

The Jackson family were from a long-established Quaker lineage and the brothers Richard, John and Jonathan were industrialists with water-powered mills at Calder Bridge nearby. Friends had to travel to Wyresdale for meetings until the Jacksons gave land for a meeting house in or close to the grounds of a Jackson family dwelling, Calder House. It was licenced in 1829. In some accounts Richard Mason is said to have given the building, and it is possible that the Jacksons gave the land and Mason paid for the building. The meeting house conforms to a layout common to several others in the region, and was probably based on a local model familiar to the builder. Butler considers that there was a solid wall between the two rooms originally and that the openings are a later insertion.

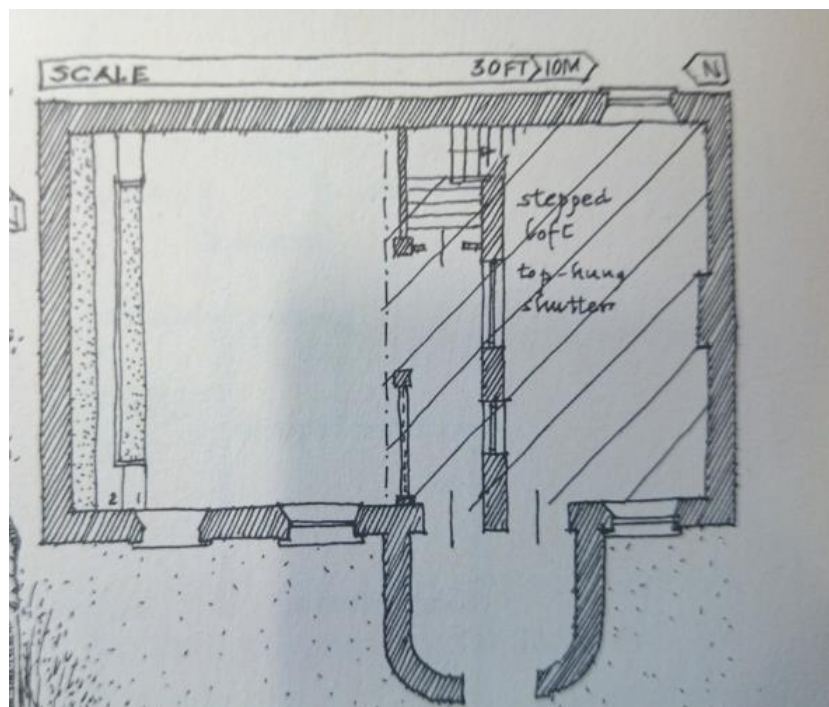


Figure 1. Ground floor plan of the meeting house as reconstructed by Butler (north at the top; not to scale) (Butler (1999), vol. 1, p.296)

A stone-built coach house and stable with five stalls were added in circa 1900, by which time the burial ground had been extended. A small extension for a WC was added to the meeting house at about the same time. The building was re-roofed in 1995



Figure 2. Undated photograph showing the building with multi-paned sash windows before the burial ground was extended (Garstang Meeting).

2.2. The building and its principal fittings and fixtures

The meeting house was constructed in 1828-9 and built of squared watershot sandstone rubble, with a slate roof and a stone chimney in the east gable. The single storey four-bay building has a typical tripartite plan. The main front faces south with in the second bay a gabled porch with rounded sides. To the right of the porch there is a single lower window (to the former women's meeting room), to the left there are two taller windows lighting the larger meeting room. There are no windows in the gable-end elevations. The rear (north) side has one small upper window to the east gallery and a small brick toilet extension below. The porch entrance is in a plain stone surround with a basket-arched head. Inside there are rows of possibly original ironwork hat pegs and two panelled doors in plain stone surrounds, leading to the smaller and larger meeting rooms respectively.

The plan conforms to a local type for meeting houses which has resonances with domestic vernacular plan-forms. One inner door gives access to the former women's room and the other to a passageway leading beneath a gallery with steps at the far end (Fig.1). A panelled screen separates the passageway from the main meeting room. This appears to have been opened out at some point at lower level, probably with the removal of shutters. The screen continues up to form the front to the gallery, and there are pilasters accenting the centre and the entrance from the passage. The main (western) meeting room has a panelled dado which is ramped up at the west end to the elders' stand. This has fixed seating against the wall and a fixed bench with a panelled back in front, the top has a balustrade with moulded rail and widely spaced balusters. The panelling and fixed furnishings have a grained finish. There are steps up to the stand at each end, and a shaped divider at the centre of the fixed seating.

The smaller meeting room has rectangular openings in the west wall with shutters which could be raised. Hooks to secure them are set in the ceiling. There is a chimney breast in the east wall but the fireplace has been blocked. At the north end of the passage there is a stair with stick balusters and a moulded rail leading up to the gallery. This is tiered and lit by a single window on the north side.

2.3 Loose furnishings

There are a number of possibly original wooden benches with shaped bench ends in the meeting house. In the stable there is a desk, perhaps a school desk, possible of nineteenth or early twentieth century date.

2.4. Attached burial ground

A burial ground on the north and west sides of the meeting house is walled. Headstones of simple form remain *in situ* and the area is managed as a wildlife garden. The burial ground was extended at unknown exact date, probably in the late nineteenth or early twentieth century. Burial records are kept on site and record interments between 1830 and 2015.



Figure 3. The burial ground

2.5. The meeting house in its wider setting

The meeting house is in a rural setting amongst a small cluster of buildings around Calder House. It is reached by a drive running north-west from Calder House Lane and is not visible from the road. A large stable and coach house stands at the head of the drive, added in circa 1900.



Figure 4. The coach house and stables

2.6. Listed status

The building is rightly listed grade II. The presence of a largely intact contemporary interior means that it is of more historical interest than the present listed building description might suggest; a revised entry would be useful.

2.7. Archaeological potential

The Historic Environment Record does not record any archaeological features or find spots on the site. The area seems to have been open fields before the meeting house was built and the archaeological potential is probably low.

Part 6: List Description

Name: CALDER BRIDGE FRIENDS MEETING HOUSE

List entry Number: 1361911

CALDER BRIDGE FRIENDS MEETING HOUSE, CALDER HOUSE LANE

The building may lie within the boundary of more than one authority.

CountyDistrict	District Type	Parish
Lancashire	Wyre District Authority	Barnacre-with-Bonds

Grade: II

Date first listed: 09-Jan-1986

Date of most recent amendment: Not applicable to this List entry.

BARNACRE-WITH-BONDS CALDER HOUSE LANE (off) SD 44 SE 7/13 Calder Bridge
Friends' Meeting - House

- II

Quaker meeting house, 1828. Squared sandstone rubble with slate roof. Single storey. 3 bays. Windows sashed with no glazing bars and with plain stone surrounds. Gabled porch with rounded outer corners between 2nd and 3rd bays. Door has plain stone surround. Chimney on right-hand gable.

Listing NGR: SD4986643752