

LIST OF MISCELLANEOUS REMAINS IN THE CUSTODY  
OF MR. R. HAMNETT, GLOSSOP.<sup>1</sup>

BONES.

Broken and burnt bones of animals used for food—including the domestic shorthorn (*Bos longifrons*) and the sheep or goat. Also two tips of deer antler, found in a fireplace in section 136.

FLINTS.

Splinters and chips of flint and chert (from carboniferous limestone) left in walls of Neolithic age—like the rest found on similar sites in the Pennine Chain. These are of various dates, as shown by the varying states of decomposition.

One carefully chipped fragment is probably a strike-a-light used with pyrites or steel.

WHETSTONES.

Three whetstones made of "Hone stone," probably obtained from Wales or the Lake District. It does not occur in Derbyshire.

W. B. D.

QUERNS.

See p. 8 and Figures there given.

TILES.

Floor tiles }  
Roof tiles } See p. 93.

BOWLS, VASES AND OTHER POTTERY.

(See p. 77.)

1. Shortly to be placed in cases provided by Lord Howard of Glossop, in the Public Library in the Victoria Hall of that town.

## WEIGHTS.

(See p. 99.)

## COINS.

(See p. 96.)

## DICE.

(One found in the Camp, one outside the N. Gate. See p. 102.)



## LEAD.

Lead lamp-holder with serpent-handle.

Lead weight to lash (*flagellum*)?

Lead weights, dice, bow and spiral (see p. 99 and above).

Fragments, some of sheet lead.

## IRON.

3 spear-heads.

Fragments of knife.

Large axe wholly of iron.

Large ring found in S. gate (4 to 5 in. diam.).

Nails of various sizes, and miscellaneous fragments.

## BRONZE.

1 weight (see p. 100 ff.).

Fragments, including 2 ornamental nails which were found in the Praetorium; and a broken piece of a phalera (?)

Bronze plate or mould, with incised pattern (found with Roman coins in "Pym's parlour," cf. Fig. 1, and Mr. R. A. Smith's letter here appended).



Fig. 1. Figured Bronze Plate.



Fig. 2. Sphinx Seal.

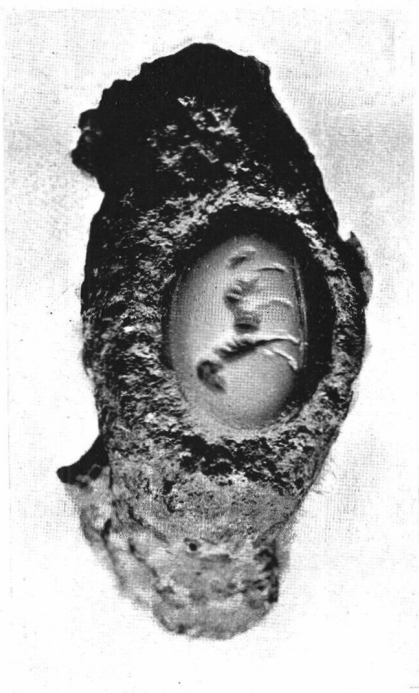


Fig. 3. Ram Seal.

DEPARTMENT OF BRITISH AND MEDIAEVAL ANTIQUITIES,  
BRITISH MUSEUM,  
LONDON, W.C.

1st January, 1906.

DEAR PROF. CONWAY,—

I have now been able to submit your bronze to Mr. Read, who is inclined to think it a weight, the design being merely ornamental, and not intended for moulding gold leaf. I make the weight 574 grains, but neither Mr. Read nor myself can recall anything quite similar, though its Roman origin is apparent.

I am,

Yours very truly,

REGINALD A. SMITH.

OTHER OBJECTS.

Sphinx-intaglio; Suetonius, *Aug.* c. 50, tells us that a seal of this pattern was the first used by Augustus (see Fig. 2).

Ram seal in iron ring, found in E. wall (see Fig. 3).

18 counters of fused glass (12 white, 5 black, 1 transparent green); cf. p. 92.

1 counter of stone.

Miniature horse, with model of ephippion. No other such model seems to be known (p. 91).

R. S. C.

---