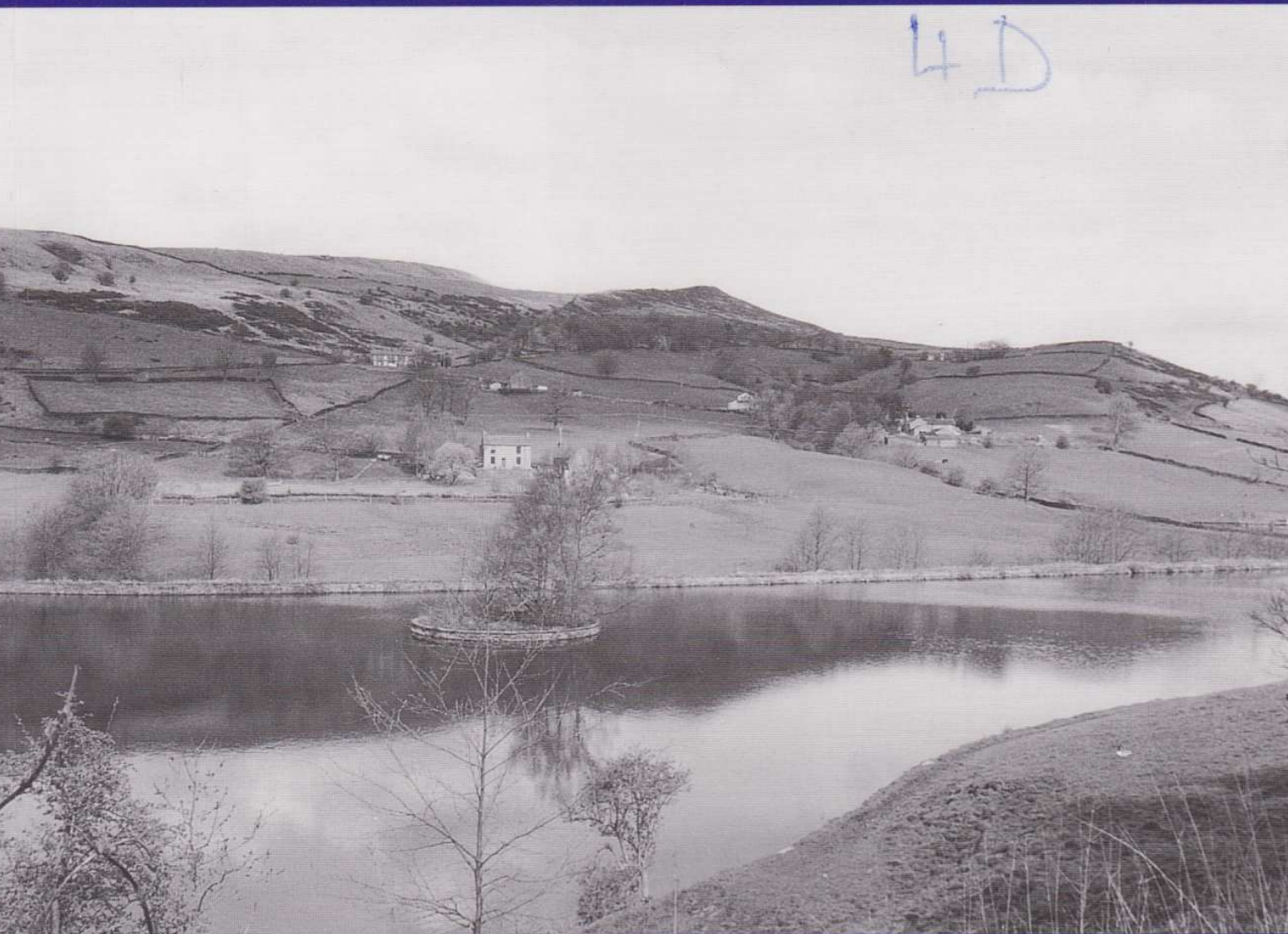


# DERBYSHIRE ARCHAEOLOGICAL JOURNAL



Volume 121

2001

THE THORESBY SOCIETY

THE  
DERBYSHIRE  
ARCHAEOLOGICAL  
JOURNAL

Df

VOLUME 121

FOR THE YEAR

2001

*Editors:*

Pauline Beswick BA, FMA, FSA, MIFA  
Dudley Fowkes BA, MA, PH.D, FSA



2001

ISSN 0070 3788



## CONTENTS

AN ARCHAEOLOGICAL EXCAVATION AT LAND OFF STINTING LANE, SHIREBROOK, DERBYSHIRE Catharine Mould	1
NEOLITHIC AND BRONZE AGE ACTIVITY ON THE TRENT FLOOD PLAIN: AN INTERIM NOTE ON RECENT EXCAVATIONS AT WILLINGTON QUARRY EXTENSION Matthew G. Beamish	9
PREHISTORIC ROCK CARVINGS NEAR LADYBOWER TOR, DERBYSHIRE G. A. Makepeace	17
PREHISTORIC SETTLEMENT REMAINS ON THE DERBYSHIRE GRITSTONE MOORS Stewart Ainsworth	19
REPORT ON THE EXCAVATION OF A ROMANO-BRITISH AISLED BUILDING AT LITTLE HAY GRANGE FARM, OCKBROOK, DERBYSHIRE 1994–97 Alan Palfreyman	70
REPORT ON THE EXCAVATIONS OF A MEDIEVAL FARM AT HILL TOP FARM, ALDWARK, NEAR BRASSINGTON, DERBYSHIRE 1992–95 G. A. Makepeace	162
‘FOOLISHLY INSCRIBED’ BUT WELL CONNECTED — GRAFFITI ON THE KING, STANTON MOOR Graeme Guilbert	190
SOME FIELDWORK IN DERBYSHIRE BY TRENT & PEAK ARCHAEOLOGICAL UNIT IN 1998–99 Graeme Guilbert and Daryl Garton	196
THE DEVELOPMENT OF PRIVATE HUNTING RIGHTS IN DERBYSHIRE, 1189–1258 David Crook	232
SEVENTEENTH CENTURY ENCLOSURES OF THE COMMONS AND WASTES OF BOWDEN MIDDLECALE IN THE ROYAL FOREST OF PEAK Derek Brumhead and Ron Weston	244

## ILLUSTRATIONS

### AN ARCHAEOLOGICAL EXCAVATION AT LAND OFF STINTING LANE, SHIREBROOK, DERBYSHIRE

Fig. 1	Location of Stinting Lane within Shirebrook, also showing geophysical survey and excavation areas	1
Fig. 2	Archaeological features within excavation area	3
Plate 1	Excavation area, looking north-east	4
Table 1	Quantification of the flint assemblage	5
Table 2	Archaeological results	6

### NEOLITHIC AND BRONZE AGE ACTIVITY ON THE TRENT FLOOD PLAIN: AN INTERIM NOTE ON RECENT EXCAVATIONS AT WILLINGTON QUARRY EXTENSION

Fig. 1	a) Location of Willington and other sites mentioned in the text in the east Midlands b) Location of site in relation to schematic location of prehistoric entries on the Derbyshire SMR within 6 km, and contours (m)	11
Fig. 2	Willington Quarry, South Derbyshire. Neolithic and Bronze Age. Zones 1–7 with selected and simplified results	12

### PREHISTORIC ROCK CARVINGS NEAR LADYBOWER TOR, DERBYSHIRE

Fig. 1	Sketch of rock carvings near Ladybower Tor	18
Plate 1	Rock carvings near Ladybower Tor	18

### PREHISTORIC SETTLEMENT REMAINS ON THE DERBYSHIRE GRITSTONE MOORS

Fig. 1	Location map showing field systems sampled	24
Fig. 2	Schematic typology	25
Fig. 3	Stanton Moor — house sites, field systems and other principal monuments	29
Fig. 4	Stanton Moor — <i>platform</i> house site SM2	32
Fig. 5	Callow — house sites and field system	34
Fig. 6	Callow — <i>platform</i> house sites CA1, CA2	35
Fig. 7	Dennis Knoll and Sheepwash Bank — house sites, field systems and other principal monuments	36
Fig. 8	Dennis Knoll and Sheepwash Bank — <i>platform with partial bank</i> house sites SB1, SB2	38
Fig. 9	Stoke Flat — house sites, field system and other principal monuments	39
Fig. 10	Stoke Flat — <i>circumstantial</i> house site SF1	40
Fig. 11	Gibbet Moor — house sites, field system and other principal monuments	42
Fig. 12	Gibbet Moor — <i>platform with partial bank</i> house sites GM1–3	43
Fig. 13	Gibbet Moor — <i>platform with partial bank</i> house site GM4	44
Fig. 14	Gardom's Edge and Birchen Edge North — house sites, field systems and other principal monuments	45
Fig. 15	Gardom's Edge Central field system — house sites — <i>platform with partial bank</i> GE1, <i>stone-founded</i> GE2, <i>platforms</i> GE3, GE4	48
Fig. 16	Gardom's Edge North-East field system — house sites — <i>circumstantial</i> house site GE10	50
Fig. 17	Gardom's Edge North-West field system — house sites — <i>circumstantial</i> GE19, GE16, <i>platforms</i> GE17, GE18	52
Fig. 18	Big Moor — house sites, field systems and other principal monuments	56
Fig. 19	Big Moor Central field system — <i>platform with partial bank</i> house site BM10	57
Fig. 20	Big Moor Central field system — house sites — <i>ringbank</i> BM3, <i>circumstantial</i> BM19, BM4, <i>platform</i> BM5	58
Fig. 21	Big Moor Central field system — area of Swine Sty	59

REPORT ON THE EXCAVATION OF A ROMANO-BRITISH AISLED BUILDING AT LITTLE HAY GRANGE FARM, OCKBROOK, DERBYSHIRE 1994–97

Fig. 1	Ockbrook, Little Hay: location maps	71
Fig. 2	Ockbrook, Little Hay: site plan	73
Fig. 3	Ockbrook, Little Hay: phase plans	74–75
Fig. 4	Ockbrook, Little Hay: section drawings	80
Fig. 5	Ockbrook, Little Hay: section of remaining floor of north-east aisle room (F4)	82
Fig. 6	Ockbrook, Little Hay: pottery nos.1–23	103
Fig. 7	Ockbrook, Little Hay: pottery nos.24–42	104
Fig. 8	Ockbrook, Little Hay: pottery nos.43–60	105
Fig. 9	Ockbrook, Little Hay: glass fragments	130
Fig. 10	Ockbrook, Little Hay: brooches	135
Fig. 11	Ockbrook, Little Hay: other copper alloy objects	137
Fig. 12	Ockbrook, Little Hay: miscellaneous iron objects. Nos.1,2 and 4	138
Fig. 13	Ockbrook, Little Hay: Roman nails	140
Fig. 14	Ockbrook, Little Hay: lead objects	141
Fig. 15	Ockbrook, Little Hay: fired clay and daub	142
Fig. 16	Ockbrook, Little Hay: flints and stone axe	143
Fig. 17	Ockbrook, Little Hay: quernstone fragments	144–145
Fig. 18	Ockbrook, Little Hay: brick and tile fragments	148
Plate 1	Ockbrook, Little Hay: overall view of the building looking south-east	77
Plate 2	Ockbrook, Little Hay: abutment of internal partition wall to north wall, showing gap in between	78
Plate 3	Ockbrook, Little Hay: post-hole 3 showing arrangement of packing stones	84
Plate 4	Ockbrook, Little Hay: the corn-drier (H1)	89
Plate 5	Ockbrook, Little Hay: the Corieltauvian coin enlarged to twice actual size	131
Table 1	Ockbrook excavations; guide to features and contexts referred to in the text	92–93
Table 2	Ockbrook excavations; guide to other contexts	94
Table 3	Catalogue of Samian finds from Ockbrook	94–95
Table 4	Ockbrook: early fabrics and forms (using sherd counts)	108
Table 5	Ockbrook pottery: relative quantities by group	110
Table 6	Corrected metal analysis of Corieltauvian coin drillings	133
Table 7	Roman nails from Ockbrook	139
Table 8	Illustrated lead objects from Ockbrook	141–142
Table 9	brick and tile fragments from Ockbrook	147–148
Table 10	An assessment of the carbonized plant remains from Ockbrook: results of ‘scan’	149–150

REPORT ON THE EXCAVATIONS OF A MEDIEVAL FARM AT HILL TOP FARM, ALDWARK, NEAR BRASSINGTON, DERBYSHIRE 1992–95

Fig. 1	Aldwark and its environs	163
Fig. 2	Aldwark enclosure: the medieval farm	164
Fig. 3	Aldwark long barn: after excavation	166
Fig. 4	Aldwark long barn: sections	167
Fig. 5	Aldwark long barn: distributions of pottery, bone, flint and ironwork	168
Fig. 6	Aldwark, buildings B and C: distribution of metal objects	169
Fig. 7	Aldwark, buildings B and C: distribution of bone and shell	169
Fig. 8	Aldwark, buildings B and C: distribution of pottery	170
Fig. 9	Aldwark, buildings B and C: distribution of querns and flints	170
Fig. 10	Aldwark, buildings B and C: sections	172
Fig. 11	Aldwark: prehistoric flints and pottery	174
Fig. 12	Aldwark: medieval metal and other artefacts	176
Fig. 13	Aldwark: querns	177
Fig. 14	Aldwark long barn: medieval pottery from 1992 excavations	178
Fig. 15	Aldwark: medieval pottery from 1993 excavations	180
Fig. 16	Aldwark: medieval pottery from 1994 excavations	182

Fig. 17	Aldwark: medieval pottery from 1995 excavations	184
Table 1	Analysis of medieval pottery from 1992 excavations	178
Table 2	Selection of post-medieval pottery from 1992 excavations	179
Table 3	Analysis of pottery from 1993 excavations	179, 181
Table 4	Analysis of medieval pottery from 1994 excavations	182
Table 5	Analysis of animal bone from Aldwark	186

‘FOOLISHLY INSCRIBED’ BUT WELL CONNECTED — GRAFFITI ON THE KING, STANTON MOOR

Plate 1	The King and its graffiti, looking south-east in 1988	192
Plate 2	The King and its graffiti, looking east-south-east in 2000	192

SOME FIELDWORK IN DERBYSHIRE BY TRENT & PEAK ARCHAEOLOGICAL UNIT IN 1998–99

Fig. 1	Derbyshire: sites investigated	197
Fig. 2	Argosy Washolme: field drawing of the logboat	198
Fig. 3	Argosy Washolme: sketch plan of logs	199
Fig. 4	Bowler’s Cottage, Pentrich: 1999 ground plan	224
Fig. 5	Bridge Field, near Walton	228
Fig. 6	Yorkshire Bridge, Ladybower: plan of earthworks	231
Plate 1	Barton Hill Quarries, Birchover: waste from manufacture of millstones or grindstones	202
Plate 2	New Park Quarry, Stanton Moor: abandoned millstones or grindstones in disused quarry	204
Plate 3	Bolsover Castle: excavation of the site for the Visitor Centre	206
Plate 4	Bolsover Castle: excavation in progress around the tank of the Venus Fountain	208
Plate 5	Hardwick Old Hall: southern elevation of the West Lodge	214
Plate 6	Mam Tor: pitched-stone capping of the summit	217
Plate 7	Mam Tor: base of wall, as revealed during the watching-brief of 1998	217
Plate 8	Mam Tor: air photograph in June 1976	219
Plate 9	Bowler’s Cottage, Pentrich c.1920	224

THE DEVELOPMENT OF PRIVATE HUNTING RIGHTS IN DERBYSHIRE, 1189–1258

Fig. 1	Derbyshire manors covered by grants of free warren	235
--------	--	-----

SEVENTEENTH CENTURY ENCLOSURES OF THE COMMONS AND WASTES OF BOWDEN MIDDLECALE IN THE ROYAL FOREST OF PEAK

Fig. 1	Hamlets of the ancient parish of Glossop	245
Fig. 2	Boundaries of the royal forest of Peak	246
Fig. 3	The tenants’ parts of the commons and wastes of Great Hamlet, Kinder, 258–259 Ollersett, Phoside and Bank Head	260–261
Fig. 4	The tenants’ parts of the commons and wastes in Thornsett and Whittle	264
Fig. 5	Division of the commons and wastes in Thornsett, 1640	266
Fig. 6	The revised Mellor-Thornsett boundary, 1695	271
Fig. 7	Division of the commons and wastes of Ollersett and Phoside, 1640	273
Fig. 8	Division of the commons and wastes of Beard and Bugsworth in 1640	278–279
Fig. 9	The division of the commons and wastes of Hayfield Moor, Kinder Moor, Cliff Bank and Bankhead Moor	280
Fig. 10	The division of the commons and wastes of Whittle, 1640	281
Fig. 11	Two sets of terrace houses on Hall Street in New Mills separated by the 1640 division line	270
Plate I	Moors of Phoside, Ollersett and Beard looking south-east across the Sett Valley from Birch Vale	

Plate II	View of the Phoside-Ollersetts boundary looking south-east across the Sett Valley from Birch Vale	274
Plate III	The hill of Lantern Pike showing the Bankhead Moor enclosure	276
Table 1	The king's share of the commons and wastes in the High Peak granted to Thomas Eyre in 1674	251
Table 2	Bowden Middlecale enclosure agreements and Acts	254
Table 3	Comparative acreage of tenants' parts on the 1640 maps and later enclosure maps	255
Table 4	Ollersetts and Phoside: individual properties on Hibbart and Barton's 1640 map	272
Table 5	Hayfield Moor: isolated estates on Hibbart and Barton's map of 1640	277
Table 6	Whittle hamlet. Isolated estates on the Hibbart and Barton map, 1640	279