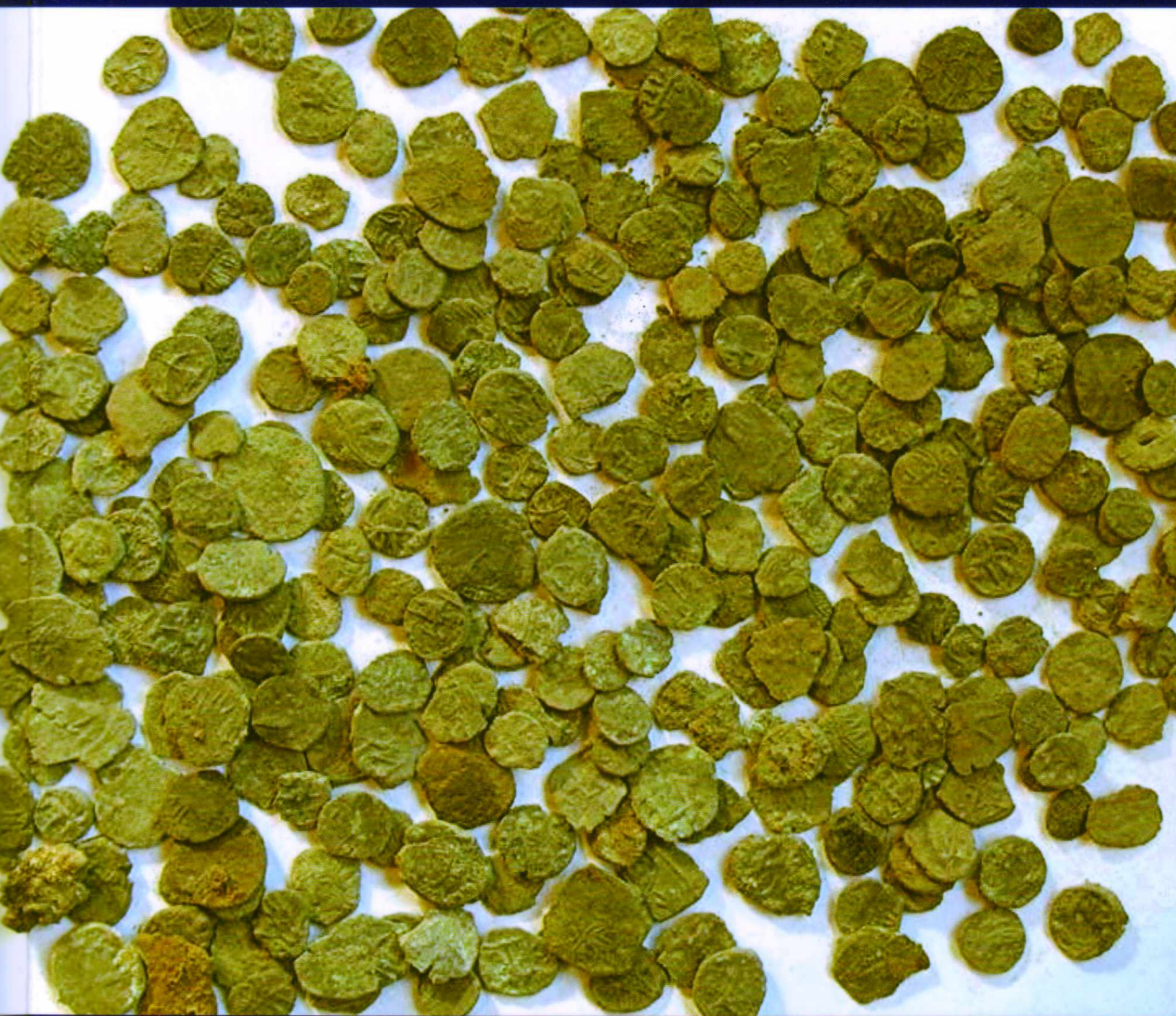


DERBYSHIRE ARCHAEOLOGICAL JOURNAL



Volume 135

2015

**THE
DERBYSHIRE
ARCHAEOLOGICAL
JOURNAL**

VOLUME 135

FOR THE YEAR

2015

Editors:

Pauline Beswick BA, FMA, FSA, MCifA

Dudley Fowkes BA, MA, PH.D, FSA



2015

ISSN 0070 3788

CONTENTS

EXCAVATION AND LANDSCAPE SURVEY OF A PLOUGHED-OUT PREHISTORIC BURIAL MOUND AT STANLOW, IN THE PEAK DISTRICT Pauline Ashmore and Arthur Wilson	1
EXCAVATION AT A SUSPECTED ROMAN VILLA AT HEAGE, DERBYSHIRE 2011-2013 Alan Palfreyman and Susan Ebbins	41
DISCOVERY AND SURVEY OF WORLD WAR I PRACTICE TRENCHES, BURBAGE, DERBYSHIRE John Barnatt	82
PETER NIGHTINGALE, RICHARD ARKWRIGHT AND THE DERWENT VALLEY COTTON MILLS, 1771–1818: A REJOINDER Doreen Buxton, Christopher Charlton and David Hool	99
PETER NIGHTINGALE, RICHARD ARKWRIGHT AND THE DERWENT VALLEY COTTON MILLS, 1771–1818: A REPLY Stanley D. Chapman	114
DERBYSHIRE CLERGY ON THE SPOT: THE 1801 CROP RETURNS Roger Dalton	117
JOAN SINAR (1925–2015) Philip Riden	124
INDEX	129

ILLUSTRATIONS

EXCAVATION AND LANDSCAPE SURVEY OF A PLOUGHED-OUT PREHISTORIC BURIAL MOUND AT STANLOW, IN THE PEAK DISTRICT

Fig. 1	Sites near to Stanlow	3
Fig. 2	Geology around Stanlow	5
Fig. 3	Bedrock features	6
Fig. 4	Contour and quadrant plan of trench	8
Fig. 5	Plan showing <i>in situ</i> features	9
Fig. 6	Stone group in Q4, with angled stones circled	10
Fig. 7	Skeleton and grave cut	11
Fig. 8	Trench plan of lithic distribution	14
Fig. 9	Flint work	16
Figs 10 and 11	Stone axe fragments	16
Fig. 12	Water sources and axe deposition	28
Fig. 13	Proximity of Stanlow to parish boundaries and Roman roads	32
Plate 1	Looking northwards across the mound, pre-excavation	2
Plate 2	Pecked hollows Q2 (left) and Q3, cm scale (right)	7
Plate 3	Stain on right tibia of skeleton, cm scale (Bloxam)	11
Plate 4	Mandible and mandibular dentition of the skeleton, cm scale (Bloxam)	12
Plate 5	Possible cut mark on a disarticulated tibia fragment, cm scale (Cox)	18
Plates 6 and 7	Rock-cut grave at Kildale Moor, Yorkshire, scale in feet (Ashbee)(left); Gritstone assemblage, Stanlow, cm scale (right)	22
Plate 8	Looking to the north from Stanlow, with Win Hill on the skyline	29
Plate 9	Examples of inscriptions found at the summit of Win Hill	25
Plate 10	Plaques fixed to rock faces at Win Hill summit	25
Plate 11	Weathered hollows(bowls) at the Win Hill summit	26
Plate 12	Prehistoric cupmark, Eyam Moor (left); weathered cupmark Win Hill summit (right). Diameters <i>c.</i> 75mm	26
Plate 13	Win Hill viewed from 5km to the south-west (left) and from 500m to the north-west (right)	29
Plate 14	Left side of mandible located inside cranium of skeleton, cm scale	33
Plate 15	Stones found on top of skeleton, cm scale	34
Table 1	Lithic types and materials used	15

EXCAVATION AT A SUSPECTED ROMAN VILLA AT HEAGE, DERBYSHIRE 2011-13

Fig. 1	Map of local area showing sources of raw materials. Site marked by broken circle	43
Fig. 2	Plan of trench. <i>c1</i> is the find spot of the 6 second century <i>sestertii</i> metal-detected by DB and <i>c2</i> that of the 2 fourth century copper-alloy coins	44
Fig. 3	Trench 9 plan; the remains of 2 Roman walls, floors/yards and the Charnwood slate stack underneath the present field wall	49
Fig. 4	Trench 10 plan; showing earlier features	51
Fig. 5	Trench 10 sections F-G and H-I	52
Fig. 6	Decorated strips from colour coated flagon or flask, probably later fourth century	64

Fig. 7	Late Roman pottery from various contexts	66
Fig. 8	Selected Charnwood roof slates found stacked in Trench 9	75
Fig. 9	Pieces from 2 different arm-rings: A excavated in TP8, B metal-detected in next field 10m away	77
Fig. 10	Iron arrowhead from top of C17, Trench 10. Possibly used for hunting	78
Fig. 11	Initial gradiometer survey data, March 2013. Reproduced with kind permission of Dr Chris Carey, Carey Consulting	55
Plate 1	Copper-alloy coins from the hoard. Photograph with permission of David Beard	42
Plate 2	Extended area of Trench 1 showing exposed walls of Room A. The star marks the most concentrated area of the deposited coin hoard	45
Plate 3	3 worn <i>sestertii</i> of Hadrian, excavated from F1 wall foundation in Trench 1 and 1E	46
Plate 4	Colour-coated beaker of Nene Valley type with painted decoration	46
Plate 5	Iron arrowhead from the top of Roman levels in Trench 10 (Appendix V)	50
Plate 6	Finger rings compared; a (left) excavated from Trench 10, Heage b (right) from Redhill Roman settlement on the River Trent, Derbyshire/Nottinghamshire border (Appendix IV)	50
Plate 7	Incomplete skeleton of a baby from foundation of wall F8, Trench 10. Confirmed as neo-natal by Dr Elizabeth Craig-Atkins, University of Sheffield	53
Table 1	Samian vessels recovered from the site	61
Table 2	Roman pottery fabrics by sherd numbers, weights and rim equivalents	63
Table 3	Reverse designs from the coin hoard	72
Table 4	Coins with notable inscriptions/recognisable prototypes	73
Table 5	Sizes of Charnwood roofing slates from Heage, given in metric and imperial measurements	74
Appendix I	The Pottery	60
	The Samian By G.Monteil	61
	The Other Roman Pottery By I.M. Rowlandson with M.J. Darling	62
	The Post-Roman Pottery By J. Young	70
Appendix II	The Hoard By Dr Eleanor Ghey	71
Appendix III	The Charnwood Roofing Slates	74
Appendix IV	Personal Ornaments	76
Appendix V	The Arrowhead	77

DISCOVERY AND SURVEY OF WORLD WAR I PRACTICE TRENCHES, BURBAGE, DERBYSHIRE

Fig. 1	A design for a small 1914-15 ' <i>fire trench</i> ', showing men in ' <i>bays</i> ' with ' <i>traverses</i> ' in between (Bull 2008)	86
Fig. 2	Designs for ' <i>fire trenches</i> ' from a 1917-18 reference manual (General Staff, War Office 1917-18)	86
Fig. 3	Design for ' <i>fire</i> ', ' <i>supervision</i> ' and ' <i>communication trenches</i> ' from a 1917-18 reference manual (General Staff, War Office 1917-18)	87

Fig. 4	Design for ' <i>fire</i> ', ' <i>supervision</i> ' and ' <i>communication trenches</i> ' from a 1917-18 reference manual, including forward trenches here shown to be used for sappers to pass the barbed wire entanglements (General Staff, War Office 1917-18)	87
Fig. 5	Design for a 1914-15 ' <i>redoubt</i> ' (Bull 2008)	88
Fig. 6	Typical design for a ' <i>fire trench</i> ' from a 1917-18 reference manual (General Staff, War Office 1917-18)	89
Fig. 7	Design for ' <i>fire trenches</i> ' in wet and dry soils, from a 1917-18 reference manual (General Staff, War Office 1917-18)	90
Fig. 8	The western area of the Burbage Edge practice trenches	91
Fig. 9	The eastern area of the Burbage Edge practice trenches	92
Fig. 10	The Watford Moor practice trench	94
Plate 1	The area 23 ' <i>fire trench</i> ' in the pasture below Burbage Edge	83
Plate 2	Surveying at the intact ' <i>fire trench</i> ' on Watford Moor	84
Plate 3	Detail of the Watford Moor practice trench, showing a single firing ' <i>bay</i> '	95
Plate 4	Detail of the Watford Moor practice trench, showing a ' <i>traverse</i> ' and the south-eastern firing ' <i>bay</i> '	95

PETER NIGHTINGALE, RICHARD ARKWRIGHT AND THE DERWENT VALLEY COTTON MILLS, 1771-1818:

A REJOINDER

Fig. 1	Chart pedigree of the Nightingale family of Lea	106
Table 1	Workers' housing in Cromford, 1776-7	101
Table 2	Richard Arkwright's major debts, 1776-89	102
Table 3	Sir Richard Arkwright's major debts reconsidered	102

DERBYSHIRE CLERGY ON THE SPOT: THE 1801 CROP RETURNS

Fig. 1	Parishes referred to in Tables 1 to 5	119
Table 1	White Peak Parishes in 1801	121
Table 2	Magnesian Limestone Parishes in 1801	122
Table 3	Coal Measure Parishes in 1801	122
Table 4	Red Marl Parishes in 1801	122
Table 5	Trentside Parishes in 1801	122

JOAN SINAR (1925-2015)

Plate 1	Joan Sinar in the Derbyshire Record Office in the 1960s (Derbyshire Record Office)	125
---------	--	-----