

PREHISTORIC MONUMENTS IN THE PEAK AN UPDATE

By JOHN BARNATT and ANN HALL

(Cultural Heritage Team, Peak District National Park Authority,
Aldern House, Baslow Road, Bakewell, Derbyshire DE45 1AE)

INTRODUCTION

Archaeological Survey for the Peak District National Park Authority

Over the years there has been much recording of the prehistoric remains of the Peak District (Barnatt 1986, 1990; 2000b; 2008; Barnatt and Collis 1996), with the various published corpuses of sites last updated in the late 1990s (Barnatt 1996; 1999). New appraisals of specific areas have also been published (Barnatt 2009; Barnatt, Bevan and Edmonds 2017).

With the cessation (hopefully temporarily) of field survey by staff of the Peak District National Park Authority and the imminent retirement of one of the authors (JB, in Dec. 2016), this seems an opportune time to update the lists of known sites, giving new discoveries made since the 1999 updates were published. Ann Hall compiled the data on individual sites from numerous unpublished reports and other archives held in the National Park office at Bakewell.

With chambered tombs and round barrows, the system of numbering sites adopted in the original barrow survey (Collis and Barnatt 1996) has been continued and numbers allocated to new discoveries.

THE UPDATES

Chambered Tombs

The large barrow on Bolehill above Bakewell, excavated by Bateman when badly disturbed but with seven chambers or cists remaining, was assumed to have been subsequently destroyed (Barnatt and Collis 1996, pp. 91, 192: Site 6:9). However, one of the seven stone structures has recently been identified under a hawthorn tree (Plate 1) just beyond the edge of reworked mineral workings on Mogshaw Rake, located further from the hilltop than previously assumed from Bateman's vague description of its siting. This exciting discovery confirms that this was indeed a chambered site, with a large but damaged chamber either of passage grave type as found at Five Wells or Minninglow, or the closed chamber type as at Tideslow or Ringham Low (following Barnatt and Collis 1996); Ringham Low is located only *c.* 2km away to the south-west (Barnatt and Collis 1996, p. 89, site 8.2). In the late 1980s permission to visit this site was refused but subsequently it has been surveyed and details of its current state are given below.

The Limestone Plateau

| <i>Site Name and Barrow Survey number</i> | <i>Map reference</i> | <i>Description</i> |
|---|----------------------|---|
| Bolehill 6.9 | SK18316777 | Previously Bateman has recorded seven disturbed 'cists' of unstated size excavated in 1843 and 1859 in an |

| | | |
|----------------------------|-------------------|---|
| | | <p>already largely removed and ruinous barrow. What is visible today, under a mature hawthorn tree, is a vestige of a 'chamber' built of limestone slabs defining two sides of a large rectangular structure oriented roughly north-west/south-east. Two slabs, placed end to end, define a north-east side which is 3.9m long. A third slab matches one of these on a south-west side, whilst there is no sign of a presumed missing fourth slab matching that opposite. The chamber width is 1.4m and the interior is slightly lower than the surrounding ground. All three slabs comprise fissured limestone set on edge, with between 0.4 and just over 0.5m visible height; they may have originally have been higher before weathering. There is no clear sign of a surrounding mound or other related surface features (John Barnatt field observation).</p> |
| <p>Ringham Low 8.2</p> | <p>SK16956642</p> | <p>The south-eastern end of this mutilated barrow survives within a small plantation. Here the mound is 32-34m wide and the current length is 43m but beyond the north-western plantation wall the mound has been removed. Within this wall there is a vertically-set slab which is 1.22m long and 0.22m high; this may well be the side of one of the large cists recorded in the 19th century. The south-eastern end of the mound appears intact and appears to have two horns flanking a possible forecourt.</p> <p>The mound sides to the south-west and north-east are straight; the interior is uneven with pits and trenches cut into it. (John Barnatt and Heidi Taylor, unpublished survey; Taylor 1998e, p.12, feature 1).</p> |

Table 1: An update to the published Neolithic Long and Chambered Barrows in the Peak District corpus (Barnatt and Collis 1996, pp. 85-92).

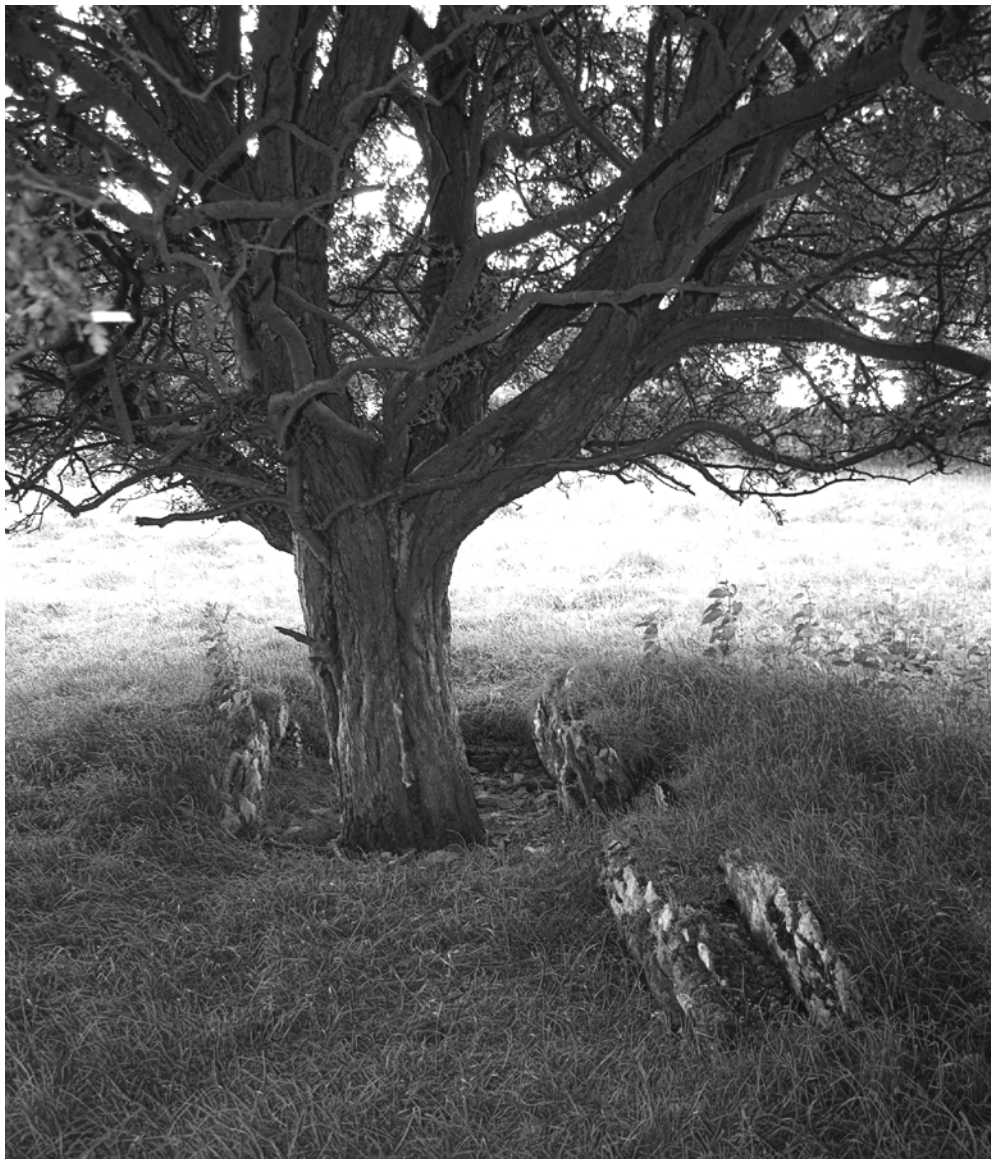


Plate 1: Remains of Bolehill barrow above Bakewell, a chambered site excavated by T. Bateman in 1843 and 1859

Round Barrows

Nine newly-identified certain or probable barrows are recorded scattered across the Peak District and are listed in Table 2. In addition, a large number of possible or postulated barrows are given in Table 3 for completeness sake; the majority are open to alternate and sometimes more likely interpretation.

Of the good sites, some are obvious large mounds that have been in plain view from public footpaths, as at Sheldon and Bole Hill near Eyam, but have not previously been

entered into the Historic Environment Records. On the north-western gritstone uplands three certain barrows have been identified, including one long-known locally at Shaw Cairn which was excavated by local enthusiasts several decades ago, with their trenches more recently reopened to evaluate the partial records they kept. Another at Cown Edge, with a partially-removed interior, has recently had evaluation excavations undertaken by the Glossopdale and Longdendale Archaeological Society to demonstrate it is indeed a barrow. This is surrounded by a scatter of small probable clearance features that have survived in the surrounding semi-improved pasture, but these have still to be evaluated as the current landowners did not want this aspect of the work to proceed.

The Limestone Plateau

| <i>Site name and allocated Barrow Survey number</i> | <i>Map reference</i> | <i>Present diameter</i> | <i>Description</i> |
|---|----------------------|-------------------------|---|
| Burton Moor 6.18 | SK20536716 | 11.5 x 9.0m | Probable barrow, 0.4m high on low knoll. Long axis coincident with the line of a removed field boundary. Shallow pit in centre. (Barnatt 2002, p. 208, feature 8.41). |
| Sheldon 6.20 | SK17226867 | 24 x 22m | Probable barrow, 1.5m high. Shallow quarry pit to north-east. A few exposed boulders at centre (John Barnatt field observation). |
| Alsop Moor 9.42 | c. SK16505728 | c. 10m | A well-shaped mound, c. 1m high, in a plantation well south of mine workings here (John Barnatt field observation). |
| Upperwood 10.65 | SK 28825799 | c. 20m | A probable barrow identified on a Lidar image, comprising a circular 'shadow' at the edge of a slightly raised area in improved ground, crossed to one side by a field wall with an earthwork beyond defining the rim of the mound (Malone 2016). |

The Western and Northern Gritstone Uplands

| | | | |
|-----------------------|------------|--------|--|
| Mount Famine 18.27 | SK05238504 | c. 20m | A circular bank, a little over 0.5m high, which is almost certainly the rim of a barrow, with an irregular interior with two visible stones suggesting |
|-----------------------|------------|--------|--|

| | | | |
|--------------------|-------------|----------|---|
| | | | it had a kerb. Probably robbed for stone for wall building (John Barnatt and Jamie Stone field observation). |
| Cown Edge 19.3 | SK 01259047 | 26 x 24m | An obvious cairn, which is up to 2.5m high, with vestiges of a kerb but substantial stone robbing over much of its interior. Evaluation excavations were undertaken in 2013-14, which demonstrated a Bronze Age date with a possible multi-phased build, with the centre disturbed by antiquarian diggings. Two possible cists, two jet buttons, 68 jet and shale beads and a sherd of cord-impressed pottery were found in the general central area in 2013-14 (Noble in prep.). |
| Shaw Cairn 21.5 | SJ 98708752 | c. 15m | This cairn was partially excavated in the 1970s-80s but never published (Mellor 2000). Evaluation excavations in 2008-09 found it was built in two phases. The first was a 0.6m high stone cairn with outer kerb and a cist associated with an amber spacer-plate necklace. In the second phase the mound was enlarged by 1.5 to 3.0m and a new kerb built. There was a sequence of 12-15 cremation burials, some in small cists and stone settings; finds included a food vessel and other sherds, a plano-convex knife and other lithics (Noble 2010). Surrounding features have also been investigated (Johnson <i>et al.</i> 2012). |

The Derwent Valley

| | | | |
|--------------------------|------------|--------------|--|
| Carlton Pasture 31.16 | SK23426913 | 16.5 x 13.0m | Roughly circular, ploughed-down mound. Up to 0.5m high, poorly defined on the northern side. Probable barrow, with views over the rest of Carlton Pastures. (Barnatt 2000a, p. 171, feature 43.27; Barnatt and Bannister 2009, Fig. 88). |
|--------------------------|------------|--------------|--|

The East Moors

| | | | |
|-------------------------|-------------|-----|--|
| Bolehill, Eyam 30.35 | SK 21507738 | 24m | A well-shaped barrow, c. 0.3m high to the north side rising to 2.5m high to the south. side, immediately upslope and slightly truncated by deep quarrying to the south (John Barnatt field observation). |
|-------------------------|-------------|-----|--|

Table 2: Certain and Probable Barrows - An update to the published barrow corpus for the Peak District corpus (Barnatt and Collis 1996, pp. 180-263; Barnatt 1999, pp. 61-66).

The Limestone Plateau

| <i>Site name and allocated Barrow Survey number</i> | <i>Map reference</i> | <i>Present diameter</i> | <i>Description</i> |
|---|----------------------|--------------------------------|---|
| Gautries Hill 1.19 | SK09838099 | Bank 12 x 10m. Mound 5 x 4m | Possible unusual barrow or the site of a recent animal feeder. A 0.2m high bank has a 0.2m high mound within the centre space (Ullathorne 2001d, p. 5, feature 10). |
| Eldon Hill 1.20 | SK11518097 | Not known | Possible barrow or possible lead mining hillock, on the south-east flank of Eldon Hill, up to 1m high with a depression in centre (Ullathorne 2003c, p. 7, feature 10). |
| Cartledge House Farm 3.13 | SK17877778 | 10m | Possible barrow, 0.6m high but with the mound truncated to south and west, near farm buildings and alternatively |

| | | | |
|---------------------------|------------|----------|--|
| | | | made from material from their construction, adaptation or demolition (Ullathorne 2001b, p. 2, feature 2). |
| Grundy House Farm 3.14 | SK16867708 | 12.5m | Possible barrow up to 0.4m high, with possible excavation pit in the centre that is 0.5m deep. Mound truncated to north by field boundary wall (Ullathorne 2001c, p. 3, feature 9). |
| Holme Bank 4.28 | SK21256937 | 15 x 19m | Possible barrow or natural knoll, 0.6m high, on ridge above River Wye (Barnatt 2000a, p. 150, feature 41.18). |
| Cracknowl Pasture 4.29 | SK21387012 | 19 x 16m | Possible barrow or natural knoll, with wide views to north, east and west (Barnatt 2000a, p. 154, feature 41.38). |
| Longstone Edge 4.30 | SK18587299 | 10m | Possible barrow or lead mining waste on a ridge top, 0.5-0.7m high, with a field wall running over it and an uneven top (Taylor 1999b, p. 4, feature 28). |
| High Fields 4.31 | SK21537484 | 10m | Possible ploughed down barrow or quarry spoil heap, 0.4m high, in prominent location on edge of deeply incised dale (Robbins 2000, p. 12, feature 6). |
| High Fields 4.32 | SK21677457 | 15m | Possible barrow or natural outcrop, 0.6 – 1.0 m high, with field wall running over the mound. It has a stone getting hollow in the top on north side of wall. In a prominent location on edge of deeply incised dale (Robbins 2000, p.14, feature 23). |
| Eyam Fields 4.33 | SK20377617 | 11 x 13m | Possible barrow or natural knoll, 0.5-0.75m high, on the edge of a deeply incised dale commanding extensive views to north, east and west (Taylor |

| | | | |
|-------------------------------|------------|---------------|---|
| | | | 1998c, p.24, feature 62 and Robbins and Ullathorne 2003, p. 15, feature 47). |
| Monsal Head 4.34 | SK18367142 | c. 25m | Possible barrow comprising an ill-defined mound up to 0.3m high, overlooking the Wye valley gorge (John Barnatt and Ann Hall field observation). |
| Burton Moor 6.17 | SK20506738 | c. 15m | Possible barrow or remnant of a natural limestone knoll, 1.5m high, over half removed by a quarry (Barnatt 2002, p. 207, feature 8.32). |
| Bradford 6.19 | SK21676455 | 15.5 x >13.0m | Possible barrow within lead mining hillocks, 0.6m high with a regular, gently domed profile without mineral present on its surface (Ullathorne 2001a, p. 4, feature 7). |
| Bank Top 7.64 | SK10996499 | c. 10m | Possible ploughed-down barrow, or a lead mining hillock or quarry disturbance, 0.3m high (Taylor 1999a, p. 15, feature 18). |
| Hitter Hill 7.65 | SK08756676 | 17m | Natural knoll possibly modified into a barrow, up to 2m high (Ullathorne 2003b, p. 6, feature 14). |
| Carder Low South-East 7.66 | SK13736221 | 13m | Possible barrow or natural knoll, 0.6m high with shallow quarry pits at its base; poorly defined and may be ploughed-over. Crossed by a field wall. (Ullathorne 2001e, p. 9, feature 44). |
| Carder Low South-East 7.67 | SK13826214 | 9 x 7m | Possible ploughed-over barrow, 0.30m high, oval with probable natural hollow to north-west that is up to 0.2m deep (Ullathorne 2001e, p. 10, feature 45). |
| Vincent House 7.68 | SK13916327 | 8 x 10m | Possible barrow or upcast from adjacent stone quarry pit, 0.4m high (Speight 2009c, feature PD.49). |

| | | | |
|------------------------|------------|------------|---|
| Vincent House 7.69 | SK14076312 | 10 x 8m | Possible barrow or grassy knoll, 0.4m high (Speight 2009c, feature PD.54). |
| Vincent House 7.70 | SK14376277 | 10 x 15m | Possible barrow or feature associated with silica-sand quarry, 0.2m high (Speight 2009c, feature PD.59). |
| Vincent House 7.71 | SK14066293 | Not known | Low mound, less than 0.2m high (Speight 2009c, feature PD.64). |
| Vincent House 7.72 | SK13966288 | Not known | Low mound, less than 0.2m high (Speight 2009c, feature PD.65). |
| Vincent House 7.73 | SK13266315 | Not known | Possible barrow or possible upcast from farming activity, comprising a grass-covered earthen mound, 0.5m high (Speight 2009c, feature PD.78). |
| Vincent House 7.74 | SK13236319 | Not known | Possible barrow or possible upcast from farming activity, comprising a grass covered earthen mound, 0.4m high (Speight 2009c, feature PD.79). |
| Ricklow Quarry 8.42 | SK16566614 | 4.5 x 7.5m | Possible barrow, a natural knoll or quarrying upcast, 0.5m high, with regular shape and flat top (Taylor 2000b, p. 13, feature 12; Barnatt 2005, p. 90, feature 28). |
| Monyash 8.43 | SK15676709 | c. 12m | Possible ploughed-down barrow, with a slight mound that is 0.3m high (Taylor 2000c, p. 2, feature 17). |
| Monyash 8.44 | SK15726694 | c. 10m | Possible barrow with 0.2m high circular mound, in a shelter belt. Possible drystone walling and a lintel stone in a small hollow to one side suggesting it may be a dilapidated limekiln (Taylor 2000c, pp. 2-3, feature 18). |

| | | | |
|------------------------------------|------------|-------------|--|
| Long Gallery Plantation 8.45 | SK18856131 | Not known | A possible barrow with low oval mound, with exposed limestone on west side, containing small to medium boulders defining the edge of what may be a trapezoidal cist that is paved with tabular limestone pieces. There is a possible kerb of small boulders to north and a low curvilinear bank defines the south-western corner (Rylatt 2004a, p. 3, feature 16). |
| Bostern Grange 9.41 | SK15385313 | Not known | Possible round barrow (Rylatt 2005, feature 26). |
| Gotham 10.61 | SK18875849 | 7m | Possible barrow or more probably a later agricultural feature, 0.5m high, overlain by a field wall, next to site 10.63 (Taylor and Robbins 1999, p. 3, feature 15). |
| Winster Moor 10.62 | SK24385999 | 8 x 12m | Possible low barrow flattened by ploughing, 0.2m high, on a high point with good views in all directions (Taylor 1998b, p. 21, feature 37). |
| Gotham 10.63 | SK18875849 | 10m | Possible barrow or more probably a later agricultural feature, 0.6m high, overlain by a field wall, next to site 10.61 (Taylor and Robbins 1999, p. 3, feature 15). |
| Roystone Grange 10.64 | SK19635615 | c. 12 x 10m | Possible barrow or later tip related to adjacent quarry, with irregular mound, up to 0.8m high, with two depressions and associated spoil tips, truncated to south by a post-medieval track (Rylatt 2004b, p. 14, feature 31). |
| Gateham 11.62 | SK12515666 | 12 x 13m | Possible barrow or possible lime kiln or quarry debris. Sub-circular mound, 0.5m |

| | | | |
|------------------|------------|-----------|---|
| | | | high, with small shallow hollow in the centre (Johnson 2000, p. 5, feature 35). |
| Gateham 11.63 | SK11665686 | 20m | Semi-circular flat-topped mound, 0.6m high, possibly the remaining half of a barrow or a natural mound (Johnson 2000, p. 2, feature 9). |
| Castern 11.64 | SK11905351 | Not known | Possible small barrow, above the Manifold Valley (Ullathorne 2005, feature PD.442.13). |

The Southern Fringes

| | | | |
|------------------------|-------------|----------|--|
| Fenny Bentley 14.10 | SK17715055 | 17m | Possible barrow or a natural limestone formation, with regular 0.6m high domed mound on ridge top (Ullathorne 2003a, p. 4, feature 5). |
| Barrel Edge 14.11 | SK 29385536 | 15 x 13m | A low disturbed mound of surface gathered stones, surmounted by a triangulation pillar, is a possible barrow (John Barnatt field observation). |

The Northern and Western Gritstone Uplands

| | | | |
|-------------------|------------|------------|--|
| The Ashes 19.2 | SK05818619 | 15 x 13m | Possible barrow or later stone clearance. Sub-circular in plan, 0.5m high, with overlying field wall (Bevan 1999, p. 41, feature 115; Bevan and Ullathorne 2005, p. 11, feature 62). |
| Eaves 20.8 | SK06887999 | 18 x 10m | Possible ploughed-over barrow, 0.25m high, overlain by wall (Bevan 2005b, feature PD.436.1). |
| Hurst 25.10 | SK11165945 | c. 10 x 6m | Possible barrow, comprising a smooth grassy mound, 1.2m high, with overlying field wall (Speight 2009b, feature PD.501.06). |

| | | | |
|----------------------|------------|-----------|--|
| Hurst 25.11 | SK12065842 | Not known | Possible barrow or natural feature, comprising a smooth grassy mound, c. 1m high, truncated by gully to south (Speight 2009b, feature PD.501.30). |
| Rocher Head 27.26 | SK25619386 | 14 x 6m | Possible barrow or natural mound, 1.5m high (Taylor 1998d, p. 15, feature 16). |
| Rocher Flat 27.27 | SK25529359 | Not known | Possible barrow or natural feature (Speight 2009a, feature PD66.16). |
| Rocher Flat 27.28 | SK26879343 | Not known | Possible barrow or landslip/quarry waste, comprising a grassy mound, c. 1m high (Speight 2009a, feature PD500.21). |
| Rocher Flat 27.29 | SK26919357 | Not known | Possible barrow or overgrown later clearance, comprising a large grassy mound, c. 1.5m high, with stone visible (Speight 2009a, feature PD500.26). |

The Derwent Valley

| | | | |
|-------------------------|------------|--------------|---|
| Pilsley 31.14 | SK25007164 | 10m | Possible barrow or fortuitous mound, comprising an amorphous ploughed-over rise, 0.3m high (Barnatt, 2000a, p. 88, feature 36.12). |
| Calton Pasture 31.15 | SK23476939 | 6 x 7m | Possible barrow or more recent mound of unknown interpretation, comprising an amorphous mound, 0.2m high (Barnatt 2000a, p. 134, feature 38.58; Barnatt and Bannister 2009, Fig. 88). |
| Calton Pasture 31.17 | SK24476869 | 17.0 x 13.5m | Possible barrow or unusual modern clearance heap. Flat-topped mound on slope, made from soil containing many small pieces of sandstone, with no height on the upslope side and 2m high on |

| | | | |
|-------------------------|------------|-------------|---|
| | | | downslope side, with possible low attached platform and possible robber pit, 0.1m deep (Barnatt 2000a, p. 183, feature 44.20; Barnatt and Bannister 2009, Fig. 88). |
| Calton Pasture 31.18 | SK24336799 | 9.5 x 6.0m | Possible small barrow or of more recent date, comprising an oval ploughed-over mound, 0.5m high (Barnatt, 1999-2000, p. 187, feature 44.32; Barnatt and Bannister 2009, Fig. 88). |
| Ashford Hall 31.19 | SK20387003 | c. 10 x 15m | Possible ploughed-down round barrow, c. 0.2-0.3m high, at top of gradual slope with good views to north, south and west (Taylor 1998a, p. 19, feature 29). |

The East Moors

| | | | |
|--------------------------------|------------|-------|---|
| Brampton East Moor 29.69 | SK29576922 | c. 6m | Possible barrow or fortuitous rise, which is very low and earthen (Barnatt 1998, p. 93, feature 16.25). |
| Birchen Edge 29.70 | SK28427236 | 9m | Possible barrow, with 0.3m high earthen mound (Barnatt 2006, feature PD.460.108). |

Table 3: Possible and Postulated Barrows - An update to the published barrow corpus for the Peak District corpus (Barnatt and Collis 1996, pp. 180-263; Barnatt 1999, pp. 61-66).

Stone Circles and Ringcairns

No new discoveries have been made.

Standing Stones and Stone Settings

A fine standing stone hidden in a conifer plantation on Matlock Moor, outside the National Park, has long been known to local people but it slipped through the net in the author's (JB) previous lists.

The East Moors

| <i>Site Name</i> | <i>Map reference</i> | <i>Description</i> |
|------------------|----------------------|--|
| Burbage Moor | SK25578097 | Probable standing stone, or earthfast boulder, 1.1 x 1.8 x 0.8m high with possible |

| | | |
|-------------|------------|---|
| | | packing stones, within a cairnfield (Bevan 2006, p. 47 feature 431.24). |
| Farley Moor | SK29966302 | Fine c. 2m high standing stone in a conifer plantation. Marked as 'stone' in open moorland on O.S. first edition 25in. to 1 mile, surveyed in 1879. However, heavy fluted weathering at the top shows it has been standing since antiquity (John Barnatt and Frank Robinson field observation 2003; Derbyshire HER 9871). |

Table 4: An update to the published standing stone and stone setting corpus (Barnatt 1986, table 7; Barnatt 1999, 59-60).

Small Isolated Cairns

Further scattered small cairns around Over Owler Tor, Gardom's Edge and the nearby Birchen Edge, complement those studied on the Chatsworth moorlands (Barnatt 1999, pp.70-71; Barnatt and Bannister 2009, pp. 29-30, 37).

The Upper Derwent Valley

| <i>Site name</i> | <i>Map reference</i> | <i>Present diameter</i> | <i>Description</i> |
|------------------|----------------------|-------------------------|--|
| Crookstone Hill | SK15068795 | 4.5 x 2.5m | A possible prehistoric funerary cairn, oval with flat top, 0.3m high, or a later boundary cairn (Barnatt 1993, p. 54, feature 404; Bevan 2001, p. 21, feature 3; Bevan 2005a, p. 105, feature 91.404). |

The East Moors

| <i>Site name</i> | <i>Map reference</i> | <i>Present diameter</i> | <i>Description</i> |
|------------------|----------------------|-------------------------|---|
| Over Owler Tor | SK25158099 | 7 x 4m | Possible funerary cairn or clearance cairn, oval and flat-topped, 0.5m high, with rounded boulders surrounded by larger blocks. There are two |

| | | | |
|----------------|------------|------------|---|
| | | | other possible cairns nearby and they may all be associated with a cairnfield c. 80m to the east (Bevan 2006, p. 44, feature 431.15). |
| Over Owler Tor | SK25158089 | 8 x 5m | Oval cairn, 0.3m high, situated on a prominent knoll (Bevan 2006, p. 47, feature 431.23). |
| Over Owler Tor | SK25128069 | 2.2 x 1.8m | Oval cairn, 0.25m high of rounded boulders surrounded by larger blocks (Bevan 2006, p. 47, feature 431.25). |
| Winyards Nick | SK25598094 | 7 x 6m | A cairn, 0.5m high, on a gentle slope below the Winyard's Nick cairnfield (Bevan 2006, p. 47). |
| Gardom's Edge | SK27187290 | 2.5 x 1.5m | A probable funerary cairn, 0.1-0.2 m high, with crude boulder kerb (Barnatt 2006, feature PD.460.4). |
| Gardom's Edge | SK27367319 | 4.0 x 4.5m | A small two-phase monument, 0.3m high, built initially as a small cairn over a grave-shaped pit. In a second phase the mound was slightly enlarged and bounded by a kerb. Excavated as part of Gardom's Edge Project (Barnatt, Bevan and Edmonds 2017). |
| Gardom's Edge | SK27717377 | 2.5m | A possible funerary cairn, 0.1-0.2m high (Barnatt 2006, feature PD.460.47). |
| Birchen Edge | SK28227352 | 9 x 8m | Stone-built, flat-topped mound, probably a funerary cairn 0.3m high with probable robbed centre (Barnatt 2006, feature PD.460.58). |

| | | | |
|--------------|------------|--------|---|
| Birchen Edge | SK28367354 | 7 x 6m | A stone-built mound, either a funerary cairn or a large clearance feature. (Barnatt 2006, feature PD.460.64). |
| Birchen Edge | SK27967305 | c. 3m | A small cairn, 0.3m high (Barnatt, 2006, feature PD.460.81). |

Table 5: An update to the published small isolated cairns on the East Moors corpus (Barnatt 1999, pp. 70-71).

Cairnfields

The only important new discoveries are at Wimberry Moss and Cown Edge to the north-west and at Barbrook Reservoir on the Eastern Moors. At the former area, evidence for cairnfields is rare and uncertainly interpreted; the new discovery at Cown Edge lies towards the southern end of the same high ridge as the possible cairnfield at Coombes Edge which is of unknown date and has post-medieval quarrying nearby (Barnatt 1999, pp 53, 57). Wimberry Moss appears to be atypical in that it has scattered small cairns on very high ground at over 450m OD and thus may be funerary. The small Barbrook Reservoir cairnfield slipped through the net during the author's field survey of the Eastern Moors in the 1980s (Barnatt 1986).

The Northern and Western Gritstone Uplands

| | | |
|-------------|------------|--|
| Alphin Pike | SE 004027 | A loose scatter of eight small cairns, all on a high ridgetop, which may well be funerary in character; they range in diameter from 6.0m to 1.2m. One comprises a ring of stones around a boulder. There is also a possible stretch of linear clearance but this may be later in date (Allen 2004). |
| Cown Edge | c. 011905 | Two small possible clearance cairns were identified in 2005 (Ullathorne 2003d, p. 4, feature 10). Subsequent fieldwork has identified around 20 scattered, probable and possible, small clearance features surviving over a wide area in semi-improved grassland (John Barnatt and Peter Noble field inspection; Noble in prep.); these await adequate assessment. |
| The Ashes | SK05858670 | Two adjacent oval clearance cairns of unknown date, with long axes aligned, are possible vestiges of prehistoric clearance but are more likely to be later in date (Bevan, B. and Ullathorne, A. 2005, p. 10, feature 57). |
| Barnsfold | SK02758789 | A single small cairn next to a field wall, is possibly prehistoric clearance but far more probably later and associated with the wall building (Ullathorne 2002a, p. 3 feature 11). |

Derwent Valley

| | | |
|----------|------------|---|
| Offerton | SK21038106 | Two small cairns of unknown date and interpretation, of 4.0m and 6.0m diameter, close together in semi-improved ground (Ullathorne 2002b, p. 2, feature 3). |
|----------|------------|---|

The East Moors

| | | |
|--------------------|---------------------------|---|
| Barbrook Reservoir | Centred SK 27697783 | A small cairnfield with 13 small cairns and possible cairns in a north-west/south-east band on a low ridge west of Barbrook and north of the old reservoir (ArcHeritage 2011) |
|--------------------|---------------------------|---|

Table 6: An update to the cairnfield corpus (Barnatt 1986; Barnatt 1999, pp. 50-58).

ACKNOWLEDGEMENTS

Ann Hall, assisted by Angie Johnson, undertook the onerous task of trawling through a large quantity of reports and other archives to identify the sites listed above. Field surveyors who identified the new sites were John Barnatt, Bill Bevan, Ann Hall, Angie Johnson, Graham Robins, Heidi Robins nee Taylor, Jim Rylatt, Kathy Speight and Alice Ullathorne. Bole Hill chambered cairn was identified by John Tanner. Barrows at Mount Famine and Cown Edge were shown to JB by Jamie Stone and Peter Noble respectively. The newly discovered cairnfield near Barbrook Reservoir was shown to JB by Rowan May. The standing stone on Farey Moor was shown to JB by Frank Robinson. Information on the possible barrow at Upperwood was supplied by Dave Barrett and David Knight. Ann Hall revisited barrows at Bole Hill (Eyam), Sheldon and Monsal Head to take measurements.

REFERENCES

- ArcHeritage (2011) *Eastern Moors Estate, Derbyshire*. Unpublished survey report for the National Trust.
- Allen, T (2004) Wimberry Moss Cairn Field for addition to the SMR. Alphin Pike. Unpublished report. Bakewell. Peak District National Park Authority, Cultural Heritage Team archives.
- Barnatt, J. (1986) Bronze Age remains on the East Moors of the Peak District. *DAJ* 106: 18-100.
- Barnatt, J. (1990) *The Henges, Stone Circles and Ringcairns of the Peak District*. Sheffield. Sheffield Archaeological Monographs 1.
- Barnatt, J. (1993) Edale Valley Archaeological Survey 1993. Unpublished report. Bakewell. Peak District National Park Authority, Cultural Heritage Team.
- Barnatt, J. (1996) Recent research at Peak District stone circles; including restoration work at Barbrook II and Hordron Edge and new fieldwork elsewhere. *DAJ* 116: 27-48.
- Barnatt, J. (1998) Chatsworth Historical Landscape Survey, Chatsworth Moorlands; Archaeological Survey 1997-8. Unpublished report. Bakewell. Peak District National Park Authority, Cultural Heritage Team.
- Barnatt, J. (1999) Taming the land: Peak District farming and ritual in the Bronze Age. *DAJ* 119: 19-78.

- Barnatt, J. (2000a) Chatsworth Historic Landscape Survey, Chatsworth Inbye Land; Archaeological Survey 1999-2000. Unpublished report. Bakewell. Peak District National Park Authority, Cultural Heritage Team archives.
- Barnatt, J. (2000b) To each their own: later prehistoric farming communities and their monuments in the Peak. *DAJ* 120: 1-86.
- Barnatt, J. (2002) The Bakewell Archaeological Survey 2002. Unpublished report. Bakewell: Peak District National Park Authority, Cultural Heritage Team archives.
- Barnatt, J. (2005) Lathkill National Nature Reserve, Over Haddon, Monyash and Youlgreave Parishes, Derbyshire: Archaeological Survey 2005. Unpublished report. Bakewell. Peak District National Park Authority, Cultural Heritage Team archives.
- Barnatt, J. (2006) Clod Hall Moor, Baslow, Derbyshire; Archaeological Survey 2006. Unpublished report. Bakewell. Peak District National Park Authority, Cultural Heritage Team archives.
- Barnatt, J. (2008) From clearance plots to 'sustained' farming: Peak District fields in prehistory. In A. M. Chadwick (ed.) *Recent Approaches to the Archaeology of Land Allotment*. Oxford. British Archaeological Reports, International Series 1875.
- Barnatt, J. and Bannister, N. (2009) *The Archaeology of a Great Estate: Chatsworth and Beyond*. Bollington: Windgather.
- Barnatt, J., Bevan, B. and Edmonds, M. (2017) *Upland Biographies: Landscape and Prehistory on Gardom's Edge, Derbyshire*. Oxford. Windgather
- Barnatt, J. and Collis, J. (eds) (1996) *Barrows in the Peak District: Recent Research*. Sheffield. Sheffield Academic Press.
- Bevan, B. (1999) Kinder and Park Hall (National Trust High Peak Estate), Hayfield, Derbyshire; Archaeological Survey 1999. Unpublished report. Bakewell. Peak District National Park Authority, Cultural Heritage Team.
- Bevan, B. (2001) National Trust High Peak Estate; Archaeological Survey 2001. Unpublished report. Bakewell. Peak District National Park Authority, Cultural Heritage Team.
- Bevan, B. (2005a) Conservation Heritage Assessment Edale Valley 2005. Moors for the Future Report, No 3. Unpublished report. Bakewell. Peak District National Park Authority, Cultural Heritage Team archives.
- Bevan, W.J. (2005b) Lower Plumpton, Chapel en le Frith, Derbyshire; Archaeological Survey 2005. Unpublished report. Bakewell. Peak District National Park Authority, Cultural Heritage Team archives.
- Bevan, B. (2006) From Cairns to Craters: Conservation Heritage Assessment of Burbage 2206. Moors for the Future Report No 8. Bakewell. Peak District National Park Authority, Cultural Heritage Team archives.
- Bevan, B. and Ullathorne, A. (2005) Ashes Farm, Land at Abney Grange, Abney and Land at Newtown, Disley, Derbyshire; Archaeological Survey 2005. Unpublished report. Bakewell. Peak District National Park Authority, Cultural Heritage Team archives.
- Johnson, A. (2000) Gateham Farm, Alstonefield, Staffordshire; Archaeological Survey 2000. Unpublished report. Bakewell. Peak District National Park Authority, Cultural Heritage Team archives.
- Johnson, B., Reid, A. and Jorge, A. (2012) *Archaeological Investigations at Shaw Cairn, Mellor Moor, Stockport: Summary Report 2011*. Sheffield. Unpublished report, Department of Archaeology, University of Sheffield.

- Malone, S. (2106) *DerwentWISE Project: Lidar Analysis (High Resolution Survey)*. Unpublished report for the DerwentWISE Partnership. Trent and Peak Archaeological Trust Report 040/2016.
- Mellor, V. (2000) *Shaw Cairn, Mellor Moor: report on the excavations, 1976-1988*. Manchester. Unpublished Report, University of Manchester Archaeological Unit.
- Noble, P. (2010) *Shaw Cairn, Mellor: An Archaeological Excavation of an Early Bronze Age Cairn*. Manchester. Unpublished Report, University of Manchester Archaeological Unit.
- Noble, P. (in prep) *An Archaeological Evaluation of an Early Bronze Age Cairn near Far Slack Farm, Cown Edge, Rowarth, Derbyshire*. An archive report on behalf of The Glossopdale and Longdendale Archaeological Society.
- Robbins, H. (2000) Highfields Farm, Stoney Middleton, Derbyshire; Archaeological Survey 2000. Unpublished report. Bakewell. Peak District National Park Authority, Cultural Heritage Team archives.
- Robbins, H. and Ullathorne, A. (2003) Castlegate Stud Farm, Foolow, Stoney Middleton and Eyam, Derbyshire; Archaeological Survey 2003. Unpublished report, p. 15, feature 47. Bakewell. Peak District National Park Authority, Cultural Heritage Team archives.
- Rylatt, J. (2004a) Little Rookery Farm, Middleton and Smerrill, Derbyshire; Archaeological Survey 2004. Unpublished report. Bakewell. Peak District National Park Authority, Cultural Heritage Team archives.
- Rylatt, J. (2004b) Ballidon Quarry, Ballidon, Derbyshire; Archaeological Survey 2004. Unpublished report. Bakewell. Peak District National Park Authority, Cultural Heritage Team archives.
- Rylatt, J. (2005) Bostern Grange Farm, Newton Grange, Derbyshire; Archaeological Survey 2005. Unpublished report. Bakewell. Peak District National Park Authority, Cultural Heritage Team archives.
- Speight, K. (2009a) Church Farm, Bradfield, South Yorkshire; Archaeological Survey 2009. Unpublished report. Bakewell. Peak District National Park Authority, Cultural Heritage Team archives.
- Speight, K. (2009b) Field House Farm, Onecote, Staffordshire; Archaeological Survey 2009. Unpublished report. Bakewell. Peak District National Park Authority, Cultural Heritage Team archives.
- Speight, K. (2009c) Vincent House Farm, Hartington Town Quarter, Derbyshire; Archaeological Survey 2009. Unpublished report. Bakewell. Peak District National Park Authority, Cultural Heritage Team archives.
- Taylor, H. (1998a) Ashford Hall, Ashford-in-the-Water, Bakewell, Derbyshire; Archaeological Survey 1998. Unpublished report. Bakewell. Peak District National Park Authority, Cultural Heritage Team archives.
- Taylor, H. (1998b) Bank Top Farm, Winster, Bonsall, South Darley, Derbyshire; Archaeological Survey 1998. Unpublished report. Bakewell. Peak District National Park Authority, Cultural Heritage Team archives.
- Taylor, H. (1998c) Castlegate Stud Farm, Stoney Middleton, Eyam, Great Longstone and Stoke, Derbyshire; Archaeological Survey 1998. Unpublished report, p. 24, feature 62. Bakewell. Peak District National Park Authority, Cultural Heritage Team archives.
- Taylor, H. (1998d) Church Farm, Bradfield, South Yorkshire; Archaeological Survey 1998. Unpublished report, p. 15, feature 16. Bakewell. Peak District National Park Authority, Cultural Heritage Team archives.

- Taylor, H. (1998e) Organ Ground Farm, Monyash and Over Haddon, Derbyshire; Archaeological Survey 1998. Unpublished report. Bakewell. Peak District National Park Authority, Cultural Heritage Team archives.
- Taylor, H. (1999a) Bank Top Farm, Hartington Middle Quarter, Derbyshire; Archaeological Survey 1999. Unpublished report. Bakewell. Peak District National Park Authority, Cultural Heritage Team archives.
- Taylor, H. (1999b) Home Farm, Little and Great Longstone, Derbyshire; Archaeological Survey 1999. Unpublished report. Bakewell. Peak District National Park Authority, Cultural Heritage Team archives.
- Taylor, H. (2000a) Dryclough Farm, Chinley, Bugsworth and Brownside, Derbyshire; Archaeological Survey 2000. Unpublished report. Bakewell. Peak District National Park Authority, Cultural Heritage Team.
- Taylor, H. (2000b) Limestones Heaths Project, Archaeological Survey 2000. Unpublished report. Bakewell. Peak District National Park Authority, Cultural Heritage Team archives.
- Taylor, H. (2000c) Rowson House Farm, Monyash, Derbyshire; Archaeological Survey 2000. Unpublished report. Bakewell. Peak District National Park Authority, Cultural Heritage Team.
- Taylor, H. and Robbins, G. (1999) Cottage Farm, Parwich and Brassington, Derbyshire; Archaeological Survey 1999. Unpublished report. Bakewell. Peak District National Park Authority, Cultural Heritage Team archives.
- Ullathorne, A. (2001a) Bradford Dale, Youlgreave and Harthill, Derbyshire; Archaeological Survey 2001. Unpublished report. Bakewell. Peak District National Park Authority, Cultural Heritage Team archives.
- Ullathorne, A. (2001b) Cartledge House Farm, Great Hucklow and Grindlow, Derbyshire; Archaeological Survey 2001. Unpublished report. Bakewell. Peak District National Park Authority, Cultural Heritage Team archives.
- Ullathorne, A. (2001c) Grundy Farm, Great Hucklow and Litton, Derbyshire, Archaeological Survey 2001. Unpublished report. Bakewell. Peak District National Park Authority, Cultural Heritage Team archives.
- Ullathorne, A. (2001d) Perryfoot Farm, Peak Forest, Derbyshire; Archaeological Survey 2001. Unpublished report. Bakewell. Peak District National Park Authority, Cultural Heritage Team archives.
- Ullathorne, A. (2001e) Sennilow Farm, Hartington, Derbyshire, Archaeological Survey 2001. Unpublished report. Bakewell. Peak District National Park Authority, Cultural Heritage Team archives.
- Ullathorne, A. (2002a) Barnsfold Farm, Hayfield, Derbyshire: Archaeological Survey 2002. Unpublished report. Bakewell. Peak District National Park Authority, Cultural Heritage Team archives.
- Ullathorne, A. (2002b) Offerton Farm, Offerton and Calver, Derbyshire: Archaeological Survey 2003. Unpublished report. Bakewell. Peak District National Park Authority, Cultural Heritage Team archives.
- Ullathorne, A. (2003a) Brookwood Farm, Fenny Bentley and Tissington, Derbyshire; Archaeological Survey 2003 (revised version). Unpublished report. Bakewell. Peak District National Park Authority, Cultural Heritage Team archives.
- Ullathorne, A. (2003b) Glutton Grange Farm, Hartington Middle Quarter and Longnor, Derbyshire and Staffordshire; Archaeological Survey 2003. Unpublished report. Bakewell. Peak District National Park Authority, Cultural Heritage Team archives.

- Ullathorne, A. (2003c) Perrydale Farm, Peak Forest, Derbyshire; Archaeological Survey 2003. Unpublished report. Bakewell. Peak District National Park Authority, Cultural Heritage Team archives.
- Ullathorne, A. (2003d) Far Slack Farm, New Mills and Chisworth, Derbyshire; Archaeological Survey 2003. Unpublished report. Bakewell. Peak District National Park Authority, Cultural Heritage Team archives.
- Ullathorne, A. (2005) Castern Hall Estate, Ilam, Staffordshire; Archaeological Survey 2005. Unpublished report, feature PD.442.13. Bakewell. Peak District National Park Authority, Cultural Heritage Team archives.