

THE DESERTED MEDIEVAL VILLAGE OF THUXTON, NORFOLK

© Norfolk Archaeological Unit, Norfolk Museums Service 1989

CONTENTS

XII. The Animal Bones, by Judith Cartledge

Table 2(a)	Total number of identifiable fragments	A.3
Table 2(b)	Total number of identifiable bird species	A.4
Table 3	Total number of identifiable fragments, main-mammalian species	A.5
Table 4	Minimum number of individuals, main-mammalian species	A.6
Table 5(a)	Key to measurements of the main mammalian species	A.7
Table 5(b)	Measurements, main mammalian species	A.8
Table 5(c)	Key to measurements of additional measurements described according to the standardisations recommended by Von den Driesch (1976)	A.9
Table 5(d)	Additional measurements	A.10
Table 6	Ageing, epiphyseal fusion, pig	A.11
Table 7	Ageing, epiphyseal fusion, cattle	A.12
Table 8	Ageing, epiphyseal fusion, caprovine	A.13
Table 9	Ageing, epiphyseal fusion, horse	A.14
Table 10(a)	Key to dentition tables	B.1
Table 10(b)	Ageing, dentition, pig	B.2
Table 11	Ageing, dentition, caprovine	B.3-4
Table 12	Ageing, dentition, cattle	B.5
Table 13	Bone-type proportions, pig	B.6
Table 14	Bone-type proportions, caprovine	B.7-8
Table 15	Bone-type proportions, cattle	B.9
Table 16	Bone-type proportions, horse	B.10
Table 17	Summary of bone-type proportions, pig	B.11
Table 18	Summary of bone-type proportions, caprovine	B.12
Table 19	Summary of bone-type proportions, cattle	B.13
Table 20	Summary of bone-type proportions, horse	B.14
Table 21	Percentages of bone-type proportions	C.1-2
Table 22	Description of horse teeth	C.3-5
	Wear patterns of horse maxillae (742a and 744; 743 and 741)	D.1-2

TABLE 2
(a)

TOTAL NUMBER OF IDENTIFIABLE FRAGMENTS
in layers

LAYER	PIG	CAPRO -VINE	CATTLE	HORSE	BIRDS	DOG	CAT	HARE	RABBIT	TOTAL
A	7	12	12	9	3	1			1	45
B	22	25	16	8	3					74
C without 745	61	80	57	23	3	3		1		228
Deposit 745	66	2		11				2		81
D	46	34	37	33	5				1	156
E	9	13	13	1	3	1	1			41
F	2	5	1	3						11
G	2			1						3
H		2								2
J		3								3
K		2								2
L	3	4								7
M		1								1
Q	2	2								4
Ditches 711	4	1	3	1						9
712		1			1					2
721		1	1		1					3
747				9						9
Deposit 741				1						1
742				1						1
743				1						1
744				1						1
TOTAL	224	188	140	103	19	5	1	3	2	685

TABLE 2 (b)

IDENTIFIABLE BIRD SPECIES

LAYER	GOOSE	DOMESTIC FOWL	MALLARD	CROW /ROOK	COMMON GULL	MISC. BIRD	TOTAL
A	1	1			1		3
B	1	2					3
C	1	1				1	3
D	1					4	5
E	1	1	1				3
Ditch 712				1			1
Ditch 721						1	1
TOTAL	5	5	1	1	1	6	19

TABLE 3

TOTAL NUMBER OF IDENTIFIABLE
FRAGMENTS - MAIN MAMMALIAN
SPECIES - in layers

LAYER	PIG		CAPROVINE		CATTLE		HORSE		TOTAL
	no.	%	no.	%	no.	%	no.	%	
A	7	17.5	12	30	12	30	9	22.5	40
B	22	32	25	36	16	23	8	9	71
C without (745)	61	24.5	80	37.5	57	27	23	11	221
Deposit 745	66	83.5	2	2.5			11	14	79
D	46	31	34	23	37	24	33	22	150
E	9	25	13	36	13	36	1	3	36
F	2		5		1		3		11
G	2						1		3
H			2						2
J			3						3
K			2						2
L	3		4						7
M			1						1
Q	2		2						4
Ditches 711	4		1		3		1		9
712			1						1
721			1		1				2
747							9		9
Deposit 741							1		1
742							1		1
743							1		1
744							1		1
TOTAL	224	33.5	188	30	140	21	103	15.5	655

TABLE 4-

MINIMUM NUMBER OF INDIVIDUALS
-MAIN MAMMALIAN SPECIES

LAYER	PIG		CAPROVINE		CATTLE		HORSE		TOTAL
	no.	%	no.	%	no.	%	no.	%	
A	2		3		1		1		7
B	1		3		2		1		7
C	3		11		2		2		18
Deposit 745	4						1		5
D	3		3		2		4		12
E	1		4		1		1		7
F	1		2		1		1		5
G	1						1		2
H			1						1
J			1						1
K			1						1
L	1		1						2
M			1						1
Q	1		2						3
Ditches 711	1				1				2
712			1						1
721					1				1
747							1		1
Pit 718			1						1
Deposit 741							1		1
742							1		1
743							1		1
744							1		1
TOTAL	19	23%	35	42.5%	11	13.5%	17	21%	82

TABLE 5 (a)

KEY TO MEASUREMENTS OF THE MAIN MAMMALIAN SPECIES

HUMERUS

Measurement

- | | |
|---|---------------------------------|
| 1 | Max. thickness distal epiphysis |
| 2 | Max. width distal epiphysis |
| 3 | Max. height distal articulation |
| 4 | Max. width distal articulation |

TIBIA

- | | |
|---|-----------------------------|
| 1 | Max. width distal epiphysis |
|---|-----------------------------|

ASTRAGALUS

- | | |
|---|--|
| 1 | Max. length lateral side |
| 2 | Max. thickness lateral side, measured from baseline of anterior side |
| 3 | Max. length medial side |

CALCANEUM

- | | |
|---|--|
| 1 | Height of bone from superior surface of articular surface to base |
| 2 | Length of articular surface |
| 3 | Width from most posterior point of bone to most anterior part of articular surface |

METAPODIALS

- | | |
|---|------------------------------------|
| 1 | Max. width proximal epiphysis |
| 2 | Max. thickness proximal epiphysis |
| 3 | Max. width distal fusion point |
| 4 | Max. thickness distal fusion point |
| 5 | Max. width distal fusion |
| 6 | Max. thickness distal fusion |

All correct

TABLE 5 (b) MEASUREMENTS - MAIN MAMMALIAN SPECIES (mm)

LAYER/ LOCATION		SPECIES	BONE	PF	DF	1	2	3	4	5	6
Layer B1	125	CAPROVINE	HUMERUS		DF		23.1	16.5	26.0		
Layer B2	182	"	"		DF		29.5				
Layer E	565	"	TIBIA		DF	22.4					
Ditch C	310	"	METACARPAL	PF		21.4	15.0				
Pit H 20	620	"	METATARSAL	PF		17.4	17.4				
Ditch A	48	CATTLE	METACARPAL		DF			48.2		52.9	28.6
Layer B1	118	"	METATARSAL		DF			45.9		50.0	27.7
Pit D 20	441	PIG	CALCANEUM	PNF		32.9	14.3	32.5			
Deposit	745	PIG	ASTRAGALUS			43.5		40.9			
Layer D	454	EQUID.	HUMERUS		DF			49.0			

TABLE 5 (c) KEY TO MEASUREMENTS OF ADDITIONAL MEASUREMENTS
DESCRIBED ACCORDING TO THE STANDARDISATIONS
RECOMMENDED BY VON DEN DRIESCH (1976)

HUMERUS	Bd	Greatest breadth distal end
	SD	Greatest breadth diaphysis
	BT	Greatest breadth trochlea
RADIUS	Bp	(Greatest) breadth proximal end
	BFp	(Greatest) breadth Facies articularis (humeral articular surface)
PELVIS	LAR	Length acetabulum on rim
	LA	Length acetabulum including tip
FEMUR	GL	Greatest length
	Bp	(Greatest) breadth proximal end
	BTr	(Greatest) breadth of region of the Trochanter tertius
	Bd	(Greatest) breadth distal end
OS TARSII CENTRALE	GB	Greatest breadth
METATARSAL	Bp	(Greatest) breadth proximal end
	Dp	(Greatest) depth proximal end
PHALANGE I	Bfd	(Greatest) breadth Facies articularis distalis
	Bd	(Greatest) breadth distal end
	Bp	(Greatest) breadth proximal end
	GL	Greatest length
HORNS (Cattle)	(44)	Horncore basal circumference
	(45)	Greatest (oro-aboral) diam. horncore base
	(46)	Least (dorso-basal) diam. horncore base
	(47)	Length outer horncore curvature (tape measure)
HORNS (Sheep/goat)	(40)	Horncore basal circumference
	(41)	Greatest (oro-aboral) diam horncore base
	(46)	Least (latero-medial) diam. horncore base

TABLE 5 (d)

ADDITIONAL MEASUREMENTS
(taken according to Von den Driesch, 1976)

LAYER	LOCATION	ANIMAL	BONE	LEFT	RIGHT	PF	DF	MEASUREMENTS
E	569	domestic cat	humerus		✓		✓	Bd 17.2, SD 16.0
D	452	equid.	humerus		✓		✓	Bt 61.8
Ditch D4	541	equid.	radius		✓	✓		Bp 71.7, Bfp 68.0
Fit C 20	239	canid.	pelvis					LAR 19.8
D	425	pig	pelvis					LAR 30.7, LA 38.9
A	5	rabbit	femur	✓		✓	✓	GL 81.0, Bp 16.7 BTr 16.0, Bd 14.0
Deposit	745	equid.	os tarsi centrale					GB 51.7
Deposit	745	equid.	metatarsal		✓	✓		Bp 49.5, Dp 45.8
Deposit	745	equid.	phalange 1			PNF ✓		Bd/Bfd 42.7
Deposit	745	equid.	phalange 1			✓	✓	GL 75.4, Bp 45.3, Bd 41.0, Bfd 38.0
C2	357	cattle	horn	(44)	108.0, (45)	34.7, (46)	29.3, (47)	105.0 (est)
Pit L 20	650	sheep	horn	(40)	75.0, (41)	29.2, (42)	17.1	

TABLE 6

AGEING - EPAPHYSEAL FUSION - PJG

BONE	PF	DF	AGEING	A	B	C	745	D	TOTAL
HUMERUS	PNF						I		I
		DNF						I	
RADIUS	PNF	DNF		I					I
	PNF						I	I	2
		DNF						I	I
METACARPAL	PF					I			I
	PF	DNF					3		
FEMUR	PNF	DNF		I					I
	PNF						2		2
	PF							I	I
		DNF					I		I
TIBIA	PNF						I		I
		DNF		I	I				2
METATARSAL	PF					I	I	I	3
	PF	DNF					3		3
PHALANGE I	PNF	DF					5		5
		DF						I	I
PHALANGE 2	PNF	DF					I		I

TABLE 7

AGEING - EPIPHYSEAL FUSION - CATTLE

BONE	PF	DF	AGEING	A	B	C	D	TOTAL
SCAPULA	PF					I		I
METACARPAL	PF					I	2	3
		DF		I				I
TIBIA		DNF				I		I
		DF			I			I
METATARSAL		DF			I			I
PHALANGE I	PF	DF				I		I
PHALANGE 2	PF	DF			I			I
TOTAL				I	3	4	2	10

TABLE 8

AGEING - EPIPHYSEAL FUSION - CAPROVINE

BONE	PF	DF	AGEING	B	C	745	E	H	TOTAL
SCAPULA	PF								
HUMERUS		DF		2					2
FEMUR		DNF				I			I
TIBIA	PF				I				I
		DF					I		I
METATARSAL	PF							I	I
TOTAL				2	I	I	I	I	6

TABLE 9

AGEING - EPIPHYSEAL FUSION - HORSE

BONE	PF	DF	AGEING	C	745	D	E	TOTAL
HUMERUS		DF				2		2
RADIUS	PF					I		I
		DF				I		I
FEMUR		DF					I	I
TIBIA	PNF					I		I
CALCANEUM								
METATARSAL	PF				I			I
PHALANGE 1	PNF					I		I
	PNF	DF			I	I		2
PHALANGE 2	PF	DF		I				I
TOTAL				I	2	7	I	II

TABLE 10

(a)

KEY TO DENTITION TABLES

(based on wear stages categorized
in Grant, 1975)

Ma = mandible

To = loose tooth

C = canine

D4 = lower deciduous premolar

P2

P3 lower premolars

P4

M1

M2 lower molars

M3

(a),(b), etc - lower case alphabetical
indicate stages of wear

C = perforation in crypt visible

V = tooth visible in crypt but
below head of bone

E = tooth erupting through bone

$\frac{1}{2}$ = tooth half-up, about halfway between
bone and full height

U = tooth almost at full height but unworn

J = tooth just coming into wear

W = tooth in wear or worn

TABLE 10 (t)

AGEING - DENTITION - PIG

LAYER	LOCATION	MANDIBLE/TOOTH	D4	P4	M1	M2	M3
D	498	To	W?				
E	573	Ma	k			b	
Pit L 20	650	Ma	m	beneath D4 -Pf-E	d	J	absent
B	119	Ma		E	e	J-a	absent
D	431	Ma		½	e		
A	2	Ma			c		
Deposit	745	To			d		
C	210	To			d		
D	431	To		a			
C	321	Ma		a			
Deposit	745	To		a			
Pit G 20	610	Ma		a	f-g	b	
Ditch	713	To			f-g		
C	314	Ma		a	k		
Deposit	745	To				about ½-U	
C	209	Ma				a	
C	237	Ma				b	E/½

TABLE II

AGEING - DENTITION - CAPROVINE

LEVEL	DEPOSIT	MANDIBLE/TOOTH	D4	P4	M1	M2	M3
F	600	To				e	
D	459	To				e	
C	233	To				e	
C	270	To				e	
A	9	To			g		
B2	186	To			g		
C	294	To			g		
C	203	To			g		
C	210	To			g		
C2	361	To				f	
C	205	To				f	
B2	188	Ma			g	f	b
D2	490	To				f-g	
C2	313	To		g			
Pit.J. 20	630	Ma		g	h	g	b-c
A	48	To					c
C	314	Ma		h	h	f-g	e-f
C	290	To			h		
E	562b	To			h		
B1	152	To			h		
B	143	To			h		
A	39	To				g	
C	276	To					e

TABLE II (Continued)

AGEING - DENTITION - CAPROVINE

LEVEL	DEPOSIT	MANDIBLE/TOOTH	D4	P4	M1	M2	M3
C	210	To					e
C	295	To					e
B2	186	To					e
D	428	To			j		
Pit.T. 20	718	Ma		h	k	g	f
C	219	To					f
A	9	To					f
C	233	To					f-g
C	256	To					f-g
D2	502	Ma		l	m	h	g
E	574	To					g
B	103	To					g
C	294	To					g
C	209	To					g
G	731	To			m		

TABLE 12

AGEING - DENTITION - CATTLE

LEVEL	LOCATION	MANDIBLE/TOOTH	D4	P4	M1	M2	M3
B	129	Ma					cusps 1st 2nd 3rd d a not warn
B2	172	To			c-d		
B2	195	To	j-k				
C	210	Ma					E-U?
C	265	To			M1/2 not warn		
D	428	To		U?			
D	428	To					g
D	431	To					not warn
D	435	To					b
D	502	Ma					E
D	502	Ma			h		
D	502	Ma			g		E
D	502	To		not up?			
E	562b	To					g
E	574	To		not warn			

TABLE 13 BONE-TYPE PROPORTIONS - PIG

	A	B	C	(745)	D	E	F	G	L	Q	(711)	TOTAL
MANDIBLE	I	2	II	7	6	3			I	I		32
MAXILLA		I	2	8	2					I		17
TOOTH	2	II	28	15	16	3	I	2	2	I	2	81
SKULL		I	3	I	I							6
SCAPULA		2	I	2	I							6
PELVIS	I	I	I	5	3					2		12
HUMERUS		I	4	I	I	I						8
FEMUR	I	2	I	4	3							11
RADIUS	I			I	4							6
ULNA			I		2							3
TIBIA	2	I	I	2	I	I	I			I		10
FIBULA					I							I
METACARPALS			I	3								4
METATARSALS			I	4	I							6
METAPODIALS			I									I
PATELLA				2								2
ASTRAGALUS				I	I	I						3
CALCANEUM			2	5	2		I					4
CARPAL			2	4								6
TARSAL												
NAVICULAR			I									I
CUBOID												
PHALANGE 1				5	I							6
PHALANGE 2				I		I						I
PHALANGE 3												
TOTAL	7	22	61	66	46	9	2	2	3	2	4	224

TABLE 14 BONE-TYPE PROPORTIONS - CAPROVINE

	A	B	C	(745)	D	E	F	H	J								
MANDIBLE	7	1	5	I	4	1	I	I	I								
MAXILLA		2	(13)		(13)	I			(21)	(4)	(1)	(1)					
TOOTH		9	37		I	15			3	I	I	I					
SKULL		1	1			I											
SCAPULA	I	3	3	2	I	I	3	I	I								
PELVIS										3	(5)	(1)	(3)	I	(4)		
HUMERUS										(1)	(3)	(3)	I	I	I	3	(4)
FEMUR													I	I			
RADIUS	3	3	I2	I	3	4	I	I	I								
ULNA		(3)	(5)		I	(26)	(6)			(5)	(3)						
TIBIA		2	I3			3	I			2							
METACARPAL	I	2	I	I	3	I	I	I	I								
METATARSAL		(1)	(4)							4	(5)	(3)	(1)	I	(1)	(1)	
METAPODIAL																	
PATELLA			I	I	I	I	I	I	I								
ASTRAGALUS										(1)							
CALCANEUM																	
CARPAL																	
TARSAL																	
NAVICULAR																	
CUBOID																	
PHALANGE 1																	
PHALANGE 2																	
PHALANGE 3																	
TOTAL	12	25	80	2	34	13	5	2	3								

TABLE II (continued) BONE-TYPE PROPORTIONS - CAPROVINE

	K	L	M	Q	(711)	(712)	(718)	TOTAL	
MANDIBLE							I	13	
MAXILLA		F	∞				I	3	
TOOTH								75	
SKULL		4	I					8	
SCAPULA	I							I	
PELVIS								4	
HUMERUS								II	
FEMUR								2	
RADIUS				2		I		24	
ULNA					2			I	I
TIBIA									26
METACARPAL	I				I			4	
METATARSAL								II	
METAPODIAL									
PATELLA								2	
ASTRAGALUS									
CALCANEUM									
CARPAL									
TARSAL									
NAVICULAR CUBOID									
PHALANGE I									
PHALANGE 2									
PHALANGE 3									
TOTAL	2	4	I	2	I	I	I	188	

TABLE 15 BONE-TYPE PROPORTIONS - CATTLE

	A	B	C	D	E	F	(7II)	(72I)	TOTAL
MANDIBLE	I	I	IO	II	3				26
MAXILLA			I		I				2
TOOTH	5	6	I9	12	5				47
SKULL	2		6	3					II
SCAPULA		I	I	4	I				7
PELVIS		2	4				I	I	7
HUMERUS			2			I			3
FEMUR	I		2	3	I				7
RADIUS							I		I
ULNA	I		2					I	3
TIBIA		2	2					I	5
METACARPAL	I	I	3	2					7
METATARSAL	I	I		I	I		I		4
METAPODIAL									i
PATELLA									
ASTRAGALUS				I					I
CALCANEUM		I			I				2
CARPAL		I	I						I
TARSAL									
NAVICULAR			I						I
CUBOID									
PHALANGE I			I						I
PHALANGE 2		I	I						2
PHALANGE 3			I						I
TOTAL	I2	I6	57	37	I3	I	3	I	I40

TABLE 17

SUMMARY OF BONE-TYPE PROPORTIONS - PIG

LAYERS	CATEGORIES												TOTAL
	I		2		3		4		5		6		
	no	%	no	%	no	%	no	%	no	%	no	%	
A	3	43	I	I4	3	43							7
B	15	68	6	27.5	I	4.5							22
C	44	72	7	11.5	2	3	3	5	5	8.5			61
Deposit (745)	31	47	12	18.5	3	4.5	7	10.5	7	10.5	6	9	66
D	25	54.5	8	17.5	8	17.5	I	2	3	6.5	I	2	46
Pit E	6	66.6r	I	II. Ir	I	II. Ir			I	II. Ir			9
Pit F	I	50			I	50							2
Pit G	2	100											2
Pit L	3	100											3
Pit Q	I	50			I	50							2
Ditch 7II	2	50	2	50									4
TOTAL	133	59.5	37	16.5	20	9	11	5	16	7	7	3	224

TABLE 16

SUMMARY OF BONE-TYPE PROPORTIONS
- CAPROVINE

LAYERS	CATEGORIES												TOTAL
	1		2		3		4		5		6		
	no	%	no	%	no	%	no	%	no	%	no	%	
A	7	58.3r	1	8.3r	3	25	1	8.3r					12
B	13	52	3	12	5	20	4	16					25
C	43	54	5	6	26	32.5	5	6	1	1.5			80
Deposit 745	1	50	1	50									2
D	21	61.5	3	9	6	17.5	3	9	1	3			34
Pit E	4	30.5	4	30.5	5	39							13
Pit F	1	20			3	60	1	20					5
Pit H	1	50					1	50					2
Pit J	2	66.6r					1	33.3r					3
Pit K			1				1						2
Pit L	4												4
Pit M	1												1
Pit Q					2								2
Ditch 711							1						1
Ditch 712					1								1
Pit 718	1												1
TOTAL	99	53	18	9.5	51	27	18	9.5	2	1			188

TABLE 19

SUMMARY OF BONE-TYPE PROPORTIONS
- CATTLE

LAYERS	CATEGORIES												TOTAL
	1		2		3		4		5		6		
	no	%	no	%	no	%	no	%	no	%	no	%	
A	8	66.6r	1	8.3	1	16.6r	2	16.6r					12
B	7	43.5	3	18.5	2	12.5	2	12.5	1	6.5	1	6.5	16
C	36	62	9	17.5	4	7	3	5	2	3.5	3	5	57
D	26	70.5	7	19			3	8	1	2.5			37
E	9		2				1		1				13
F			1										1
Ditch 71I			1		1		1						3
Ditch 72I					1								1
TOTAL	86	61.5	24	17	9	6.5	12	8.5	5	3.5	4	3	140

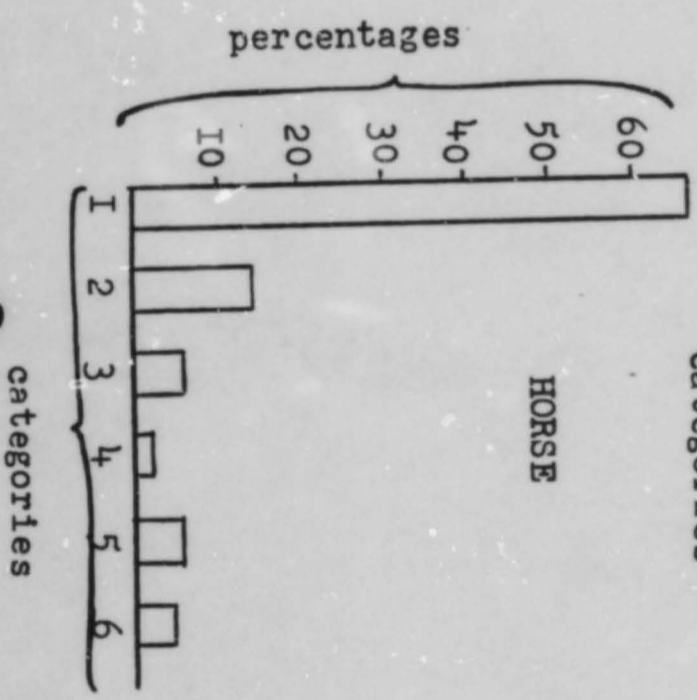
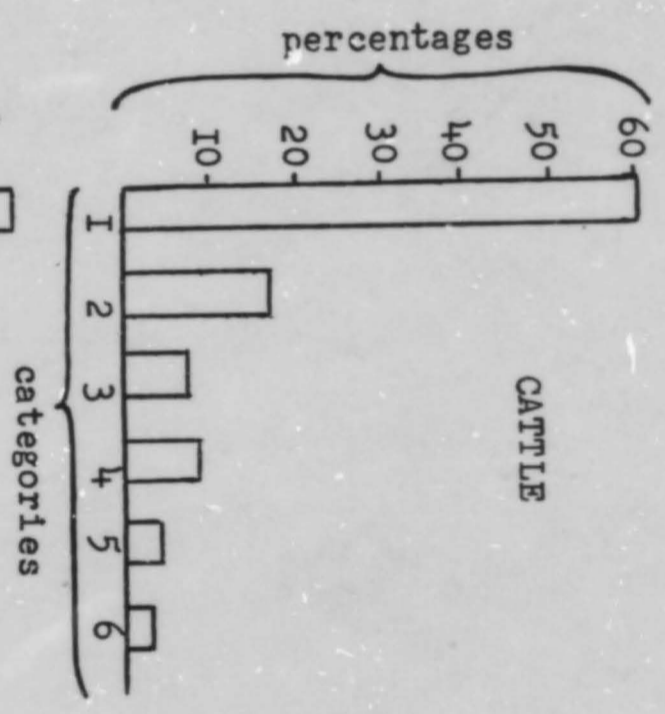
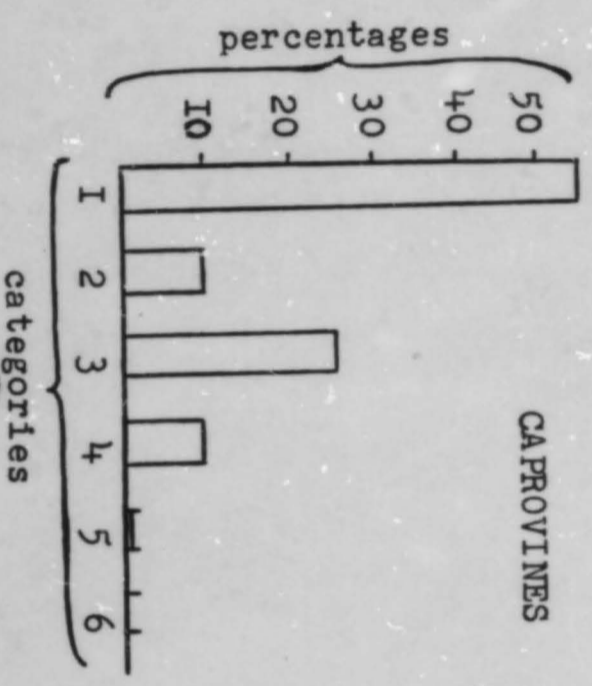
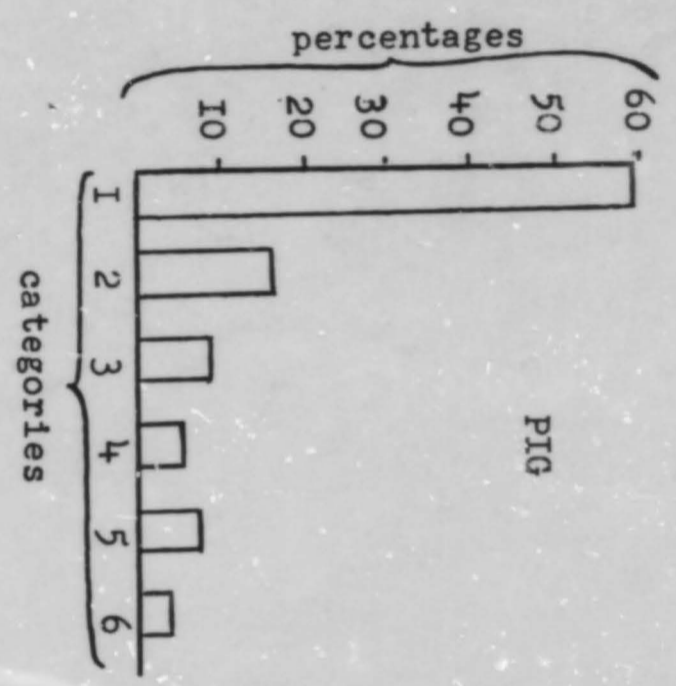
TABLE 29

SUMMARY OF BONE-TYPE PROPORTIONS
-HORSE

LAYERS	CATEGORIES												TOTAL
	1		2		3		4		5		6		
	no	%	no	%	no	%	no	%	no	%	no	%	
A	7	78							2	22			9
B	8												8
C	17	74	4	17					1	4.5	1	4.5	23
D	20	61	5	15	5	15			1	3	2	6	33
E			1										1
F	3												3
G	1												1
Ditch 711	1												1
Deposit 741	1												1
Deposit 742	1												1
Deposit 743	1												1
Deposit 744	1												1
Deposit 745			5	45.5			2	18	3	27.5	1	9	11
Ditch 747	8	89			1	11							9
TOTAL	69	67	15	14.5	6	6	2	2	7	6.5	4	4	103

TABLE 21

PERCENTAGES OF BONE TYPE PROPORTIONS



KEY FOR CATEGORIES

- | | | | | |
|-------------|------------|-----------|---------------|------------|
| 1. mandible | 2. scapula | 3. radius | 4. metacarpal | 5. patella |
| maxilla | pelvis | ulna | metatarsal | astragalus |
| tooth | humerus | tibia | metapodial | calcaneum |
| skull | femur | fibula | 6. phalange 1 | carpal |
| | | | phalange 2 | tarsal |
| | | | phalange 3 | navicular |
| | | | | cuboid |

C.1-2

TABLE 22

1

DESCRIPTION OF TEETH

LAYER	MAXILLA, MANDIBLE OR LOOSE TOOTH	DESCRIPTION OF TOOTH/ TEETH	WEAR PATTERN	ESTIMATED AGE	SEX	COMMENTS
Deposit (741)	maxilla	all left & right molars premolars & incisors but only one canine	worn	8 years	male	canine very worn, cementum growth on roots (one side drawn)
Deposit (743)	maxilla	all left & right molars no incisors or canines	worn	9 years	male or female	(one side drawn)
Deposit (742)	maxilla	all left & right molars premolars & incisors but no canines	very worn	13-14 years	female	(one side drawn)
Deposit (744)	maxilla	all left & right molars premolars & incisors except one incisor missing and no canines	very worn	14 years	female	(one side drawn)
(187)	loose tooth	lower P2	worn	2y6mo- lly		
(187)	loose tooth	lower premolar	worn	3y-20y		
(358)	loose tooth	lower molar	worn	2y-12y		
(358)	loose tooth	lower premolar	worn	3y6mo- lly		
(358)	loose tooth	lower P2	worn	2y6mo- lly		
(433)	loose tooth	upper premolar	worn	2y6mo- c.lly		
(433)	loose tooth	canine				very worn / associated growth of cementum
(435)	loose tooth	upper premolar	worn	2y6mo- c.lly		
(435)	loose tooth	upper molar/ premolar	worn	3y6mo- 12y		
(225)	loose tooth fragment	lower deciduous premolar				
(225)	loose tooth fragment	lower deciduous premolar				

LAYER	MAXILLA, MANDIBLE C: LOOSE TOOTH	DESCRIPTION OF TOOTH/ TEETH	WEAR PATTERN	ESTIMATED AGE	SEX	COMMENTS
225	loose tooth	deciduous incisor	worn	2mo-2y		
225	loose tooth	deciduous incisor	worn	2mo-2y		
296	loose tooth	upper molar/ premolar	worn	3y6mo- 12y		
296	loose tooth	canine	worn			
45	loose tooth	central incisor	worn	c.14y		
45	loose tooth	upper M3	slightly worn	2y6mo- 4y6mo		
Deposit 747	loose tooth frag.	upper molar/ premolar	just coming into wear	9mo-4y		
Deposit 747	loose tooth	upper molar/ premolar	just coming into wear	9mo-4y		
Deposit 747	loose tooth	upper molar/ premolar	just coming into wear	9mo-4y		
Deposit 747	loose tooth	upper molar/ premolar	worn	3y6mo- 12y		
Deposit 747	loose tooth	upper molar/ premolar	worn	3y6mo- 12mo		
Deposit 747	loose tooth	upper deciduous premolar	worn	2-3y		
Deposit 747	loose tooth	upper P2	very worn	c.6y- 18y		
117	loose tooth	upper M3	worn	3y6mo- 11y		
381	loose tooth	upper molar/ premolar	worn	3y6mo- 11y		
601	loose tooth	upper molar/ premolar	worn	3y6mo- 11y		
356	loose tooth	upper molar/ premolar	worn	3y6mo- 11y		
313	loose tooth	upper molar/ premolar	worn	3y6mo- 11y		
602	loose tooth	upper P2	very worn	c.6y- 18y		

DESCRIPTION OF TEETH (cont.)

TABLE 22

3

LAYER	MAXILLA, MANDIBLE OR LOOSE TOOTH	DESCRIPTION OF TOOTH/ TEETH	WEAR PATTERN	ESTIMATED AGE	SEX	COMMENTS
	(5)	loose tooth	canine	very worn to a rounded point	male	increase of cementum on root/probably caused by bit
	(219)	loose tooth	canine	worn but still pointed	male	
	(322)	loose tooth	corner incisor		c. 17 years	
	(455)	loose tooth	corner incisor		c. 13 years	thirteen year old hook
	(29)	loose tooth	corner incisor		c. 14 years	remnants of thirteen year old hook
	(116)	loose tooth	lateral incisor		c. 14 years	
Ditch	(732)	loose tooth	lateral incisor		c. 7 years	
	(289)	loose tooth	lateral incisor		c. 9 years	
	(31)	loose tooth	corner incisor		> 14 years	
	(30)	loose tooth	lower M2	very worn	6-18 years	
	(253)	loose tooth	lower molar/ premolar	worn	3y6mo- 12 years	
	(464)	loose tooth	lower molar/ premolar	worn	3y6mo- 12 years	
	(24)	loose tooth	lower P2	worn	2y6mo- c. 11 years	

The Deposit of horse skulls outside Shed 5 is represented by Bag numbers 741, 742, 743, 744 and 747. Apart from Bag number 732 which is from a toft ditch, all the other bag numbers are from the occupation layers over the houses and yards.

FIGURE (M1) Wear of horse maxillary teeth

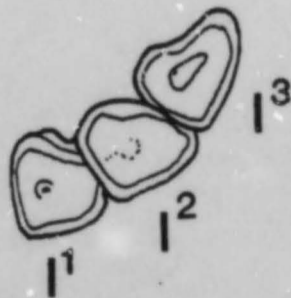
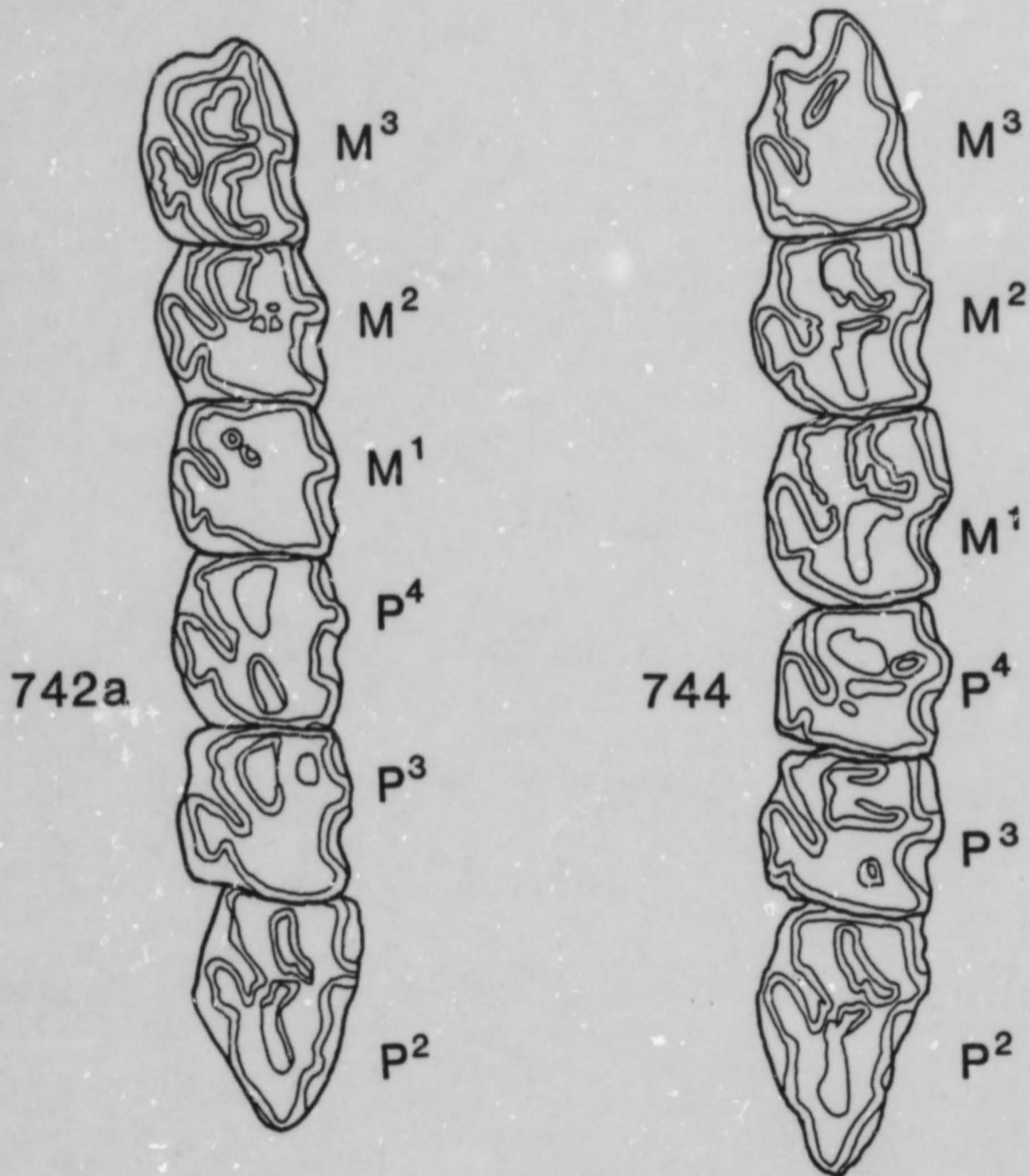
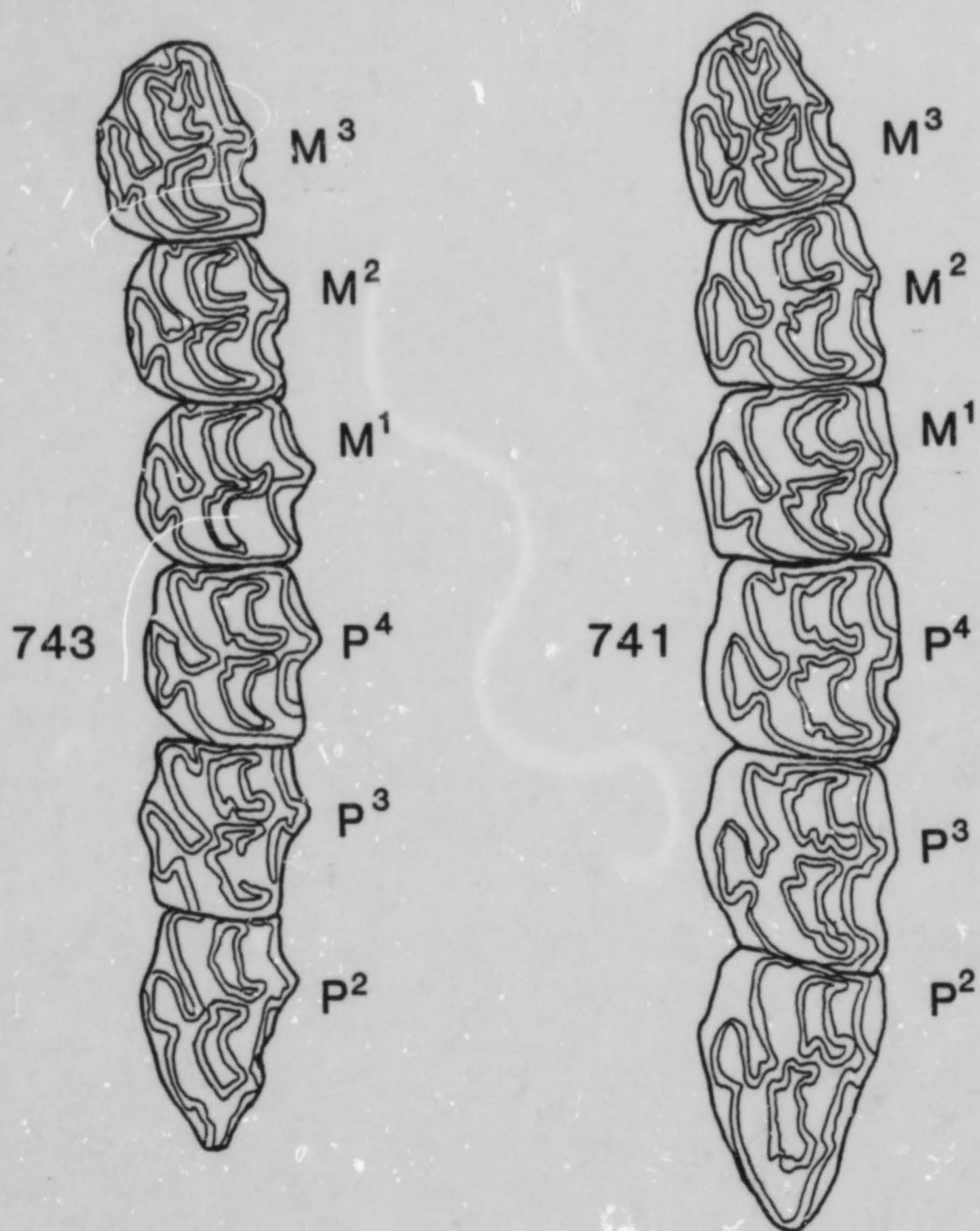
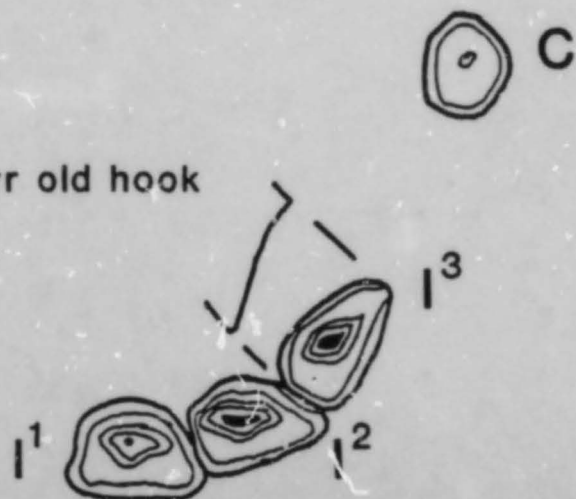
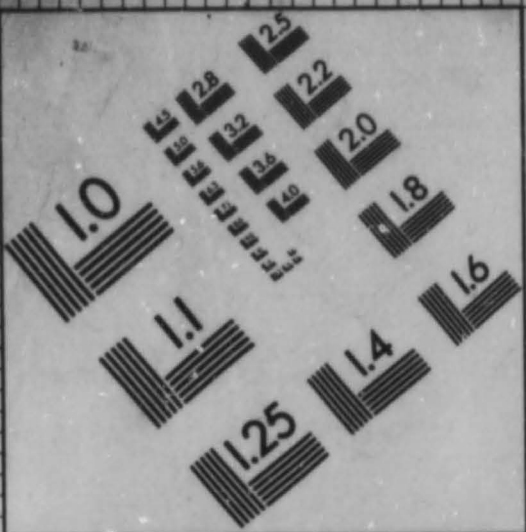


FIGURE (M2) Wear of horse maxillary teeth



remains of 7 yr old hook



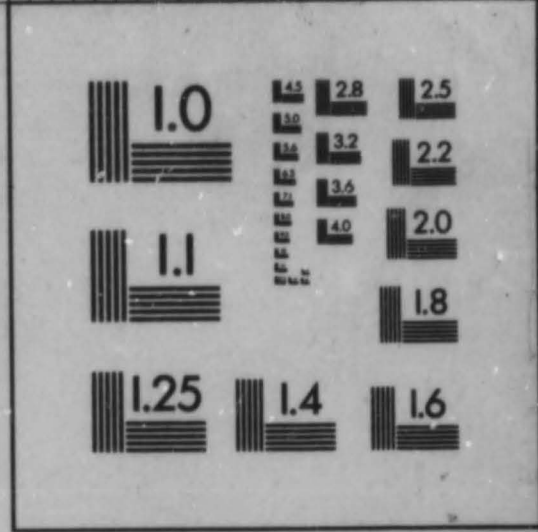


10 PT. ABCDEFGHIJKLMNOPQRSTUVWXYZ
 abcdefghijklmnopqrstuvwxyz
 1234567890

8 PT. ABCDEFGHIJKLMNOPQRSTUVWXYZ
 abcdefghijklmnopqrstuvwxyz 1234567890

6 PT. ABCDEFGHIJKLMNOPQRSTUVWXYZ
 abcdefghijklmnopqrstuvwxyz 1234567890

4 PT. ABCDEFGHIJKLMNOPQRSTUVWXYZ
 abcdefghijklmnopqrstuvwxyz 1234567890



100mm

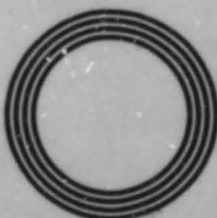
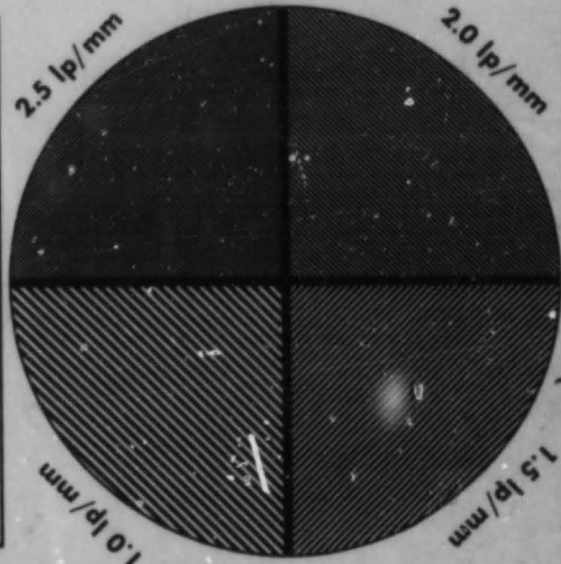
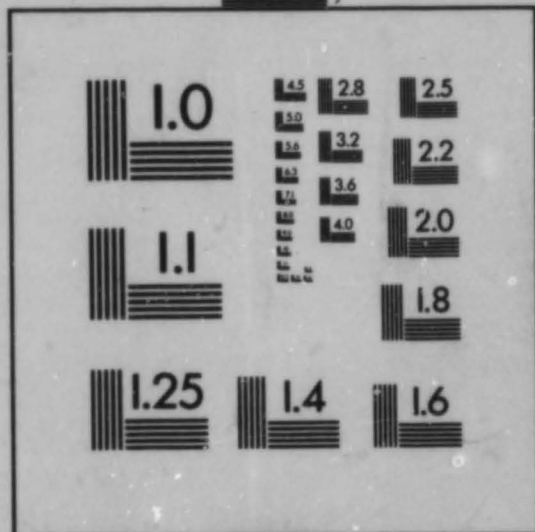
10 PT. ABCDEFGHIJKLMNOPQRSTUVWXYZ
 abcdefghijklmnopqrstuvwxyz
 1234567890

8 PT. ABCDEFGHIJKLMNOPQRSTUVWXYZ
 abcdefghijklmnopqrstuvwxyz 1234567890

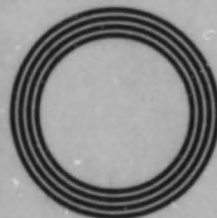
6 PT. ABCDEFGHIJKLMNOPQRSTUVWXYZ
 abcdefghijklmnopqrstuvwxyz 1234567890

4 PT. ABCDEFGHIJKLMNOPQRSTUVWXYZ
 abcdefghijklmnopqrstuvwxyz 1234567890

2.5 lp/mm



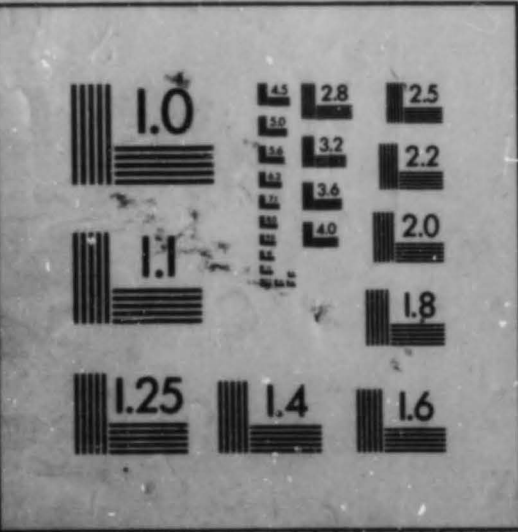
1.0 lp/mm



1.0 lp/mm



IMAGE SYSTEM
 TEST TARGET
 U.S. DEPARTMENT OF COMMERCE
 PATENT AND TRADEMARK OFFICE



10 PT. ABCDEFGHIJKLMNOPQRSTUVWXYZ
 abcdefghijklmnopqrstuvwxyz
 1234567890

8 PT. ABCDEFGHIJKLMNOPQRSTUVWXYZ
 abcdefghijklmnopqrstuvwxyz 1234567890

6 PT. ABCDEFGHIJKLMNOPQRSTUVWXYZ
 abcdefghijklmnopqrstuvwxyz 1234567890

4 PT. ABCDEFGHIJKLMNOPQRSTUVWXYZ
 abcdefghijklmnopqrstuvwxyz 1234567890

