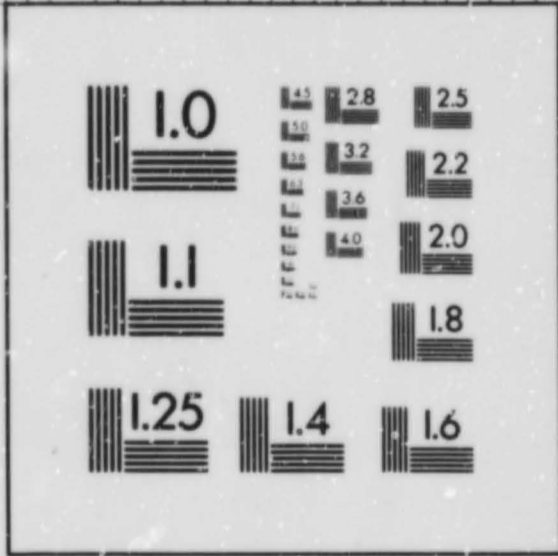


10 PT. ABCDEFGHIJKLMNOPQRSTUVWXYZ  
 abcdefghijklmnopqrstuvwxyz  
 1234567890

8 PT. ABCDEFGHIJKLMNOPQRSTUVWXYZ  
 abcdefghijklmnopqrstuvwxyz1234567890

6 PT. ABCDEFGHIJKLMNOPQRSTUVWXYZ  
 abcdefghijklmnopqrstuvwxyz1234567890

4 PT. ABCDEFGHIJKLMNOPQRSTUVWXYZ  
 abcdefghijklmnopqrstuvwxyz1234567890



2.5 lp/mm

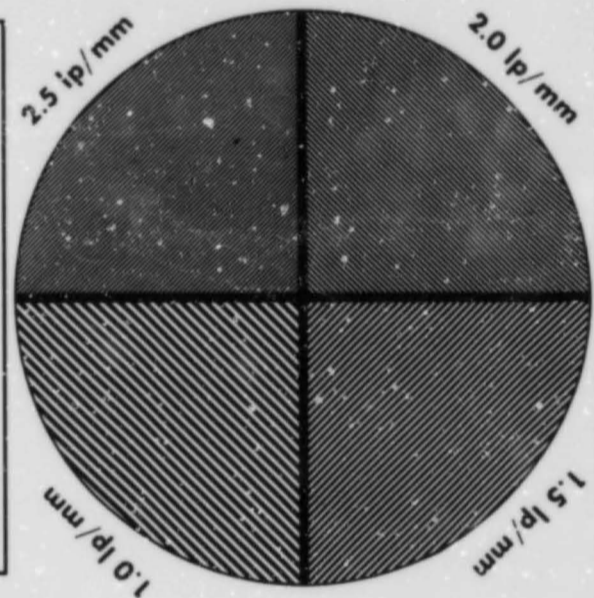
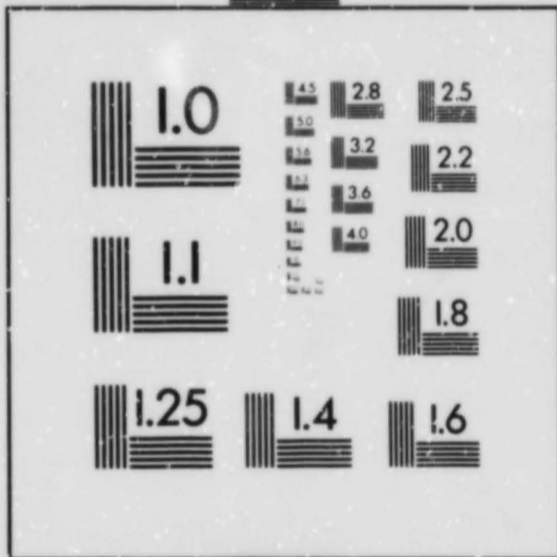
100mm

10 PT. ABCDEFGHIJKLMNOPQRSTUVWXYZ  
 abcdefghijklmnopqrstuvwxyz  
 1234567890

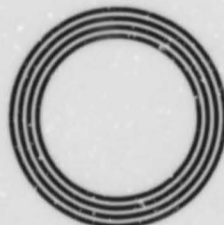
8 PT. ABCDEFGHIJKLMNOPQRSTUVWXYZ  
 abcdefghijklmnopqrstuvwxyz1234567890

6 PT. ABCDEFGHIJKLMNOPQRSTUVWXYZ  
 abcdefghijklmnopqrstuvwxyz1234567890

4 PT. ABCDEFGHIJKLMNOPQRSTUVWXYZ  
 abcdefghijklmnopqrstuvwxyz1234567890



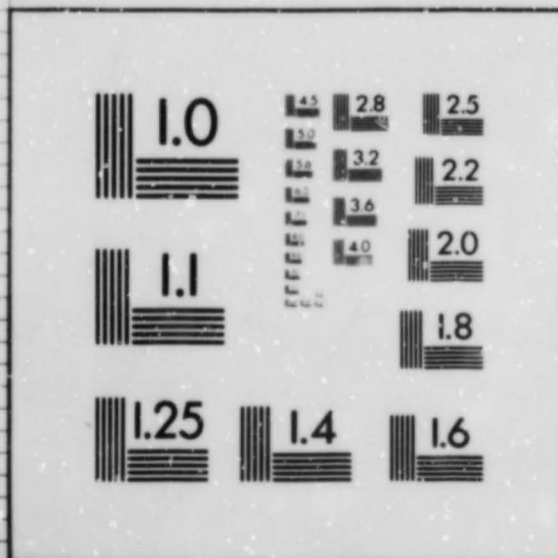
1.0 lp/mm



1.0 lp/mm



IMAGE SYSTEM  
 TEST TARGET  
 U.S. DEPARTMENT OF COMMERCE  
 PATENT AND TRADEMARK OFFICE

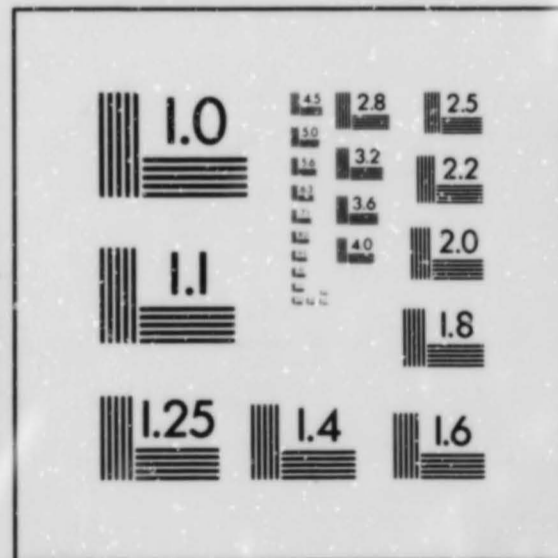


10 PT. ABCDEFGHIJKLMNOPQRSTUVWXYZ  
 abcdefghijklmnopqrstuvwxyz  
 1234567890

8 PT. ABCDEFGHIJKLMNOPQRSTUVWXYZ  
 abcdefghijklmnopqrstuvwxyz1234567890

6 PT. ABCDEFGHIJKLMNOPQRSTUVWXYZ  
 abcdefghijklmnopqrstuvwxyz1234567890

4 PT. ABCDEFGHIJKLMNOPQRSTUVWXYZ  
 abcdefghijklmnopqrstuvwxyz1234567890



**THE FENLAND PROJECT; VOLUME 4  
NORFOLK SURVEY; THE WISSEY EMBAYMENT AND THE FEN CAUSEWAY**

CONTENTS OF MICROFICHE

Gazetteer: Layout and Explanation	I: A3
Fenland Gazetteer: Abbreviations	I: A5
The Wissey Embayment: Gazetteer	
Feltwell	I: A7
Hilgay	I: C10
Hockwold	I: D1
Methwold	I: E3
Northwold	I: F13
Southery	I: G5
The Fen Causeway Gazetteer	
Denver	I: G10
Downham West	I: G12
Nordelph	I: G13
Upwell	2: A2

APPENDIX 1: TABLES

Table A	2: A5
Table B	2: A7
Table C	2: A9
Table D	2: A10
Table E	2: A11
Table F	2: A13
Table G	2: A14
Table H	2: B1

I: A2

**FELTWELL**

No.	Grid.Ref.	Date	Nature	Soil	Height	Area	(F) no	wt
-----	-----------	------	--------	------	--------	------	--------	----

## GAZETTEER: LAYOUT AND EXPLANATION

The gazetteer is presented in a tabulated and abbreviated form. Further information can be gained from the survey record which includes much fuller details of the sites and the finds recovered from those sites. At the time of writing these are housed at the headquarters of the Norfolk Archaeological Unit.

In the gazetteer, information is provided in eight columns in addition to the free text for each site.

**Column 1:** gives the number of each site as it was allocated at the time of discovery. These numbers are sequential, but occasionally there is a gap, usually due to a reconsideration of the data subsequent to the initial fieldwork record being prepared.

The significance of numbers prefixed by U or A is explained in the body of the report.

**Column 2:** gives the grid reference for each site. Generally this will be an eight-figure reference, but in the case of some U and A numbers it may be six-figure or less.

For the parishes in the Wissey Embayment, the grid letters are without exception TL. For the Fen Causeway grid references are TL unless indicated otherwise

**Column 3:** provides general or more specific dates for the material recovered from each site. (see Abbreviations)

Dating normally depends on two types of material: flint and/or pottery. On lithic sites, dates attributed to diagnostic flint are listed first and any pottery second. Where diagnostic lithic material of a particular period dominates the collection, the date is highlighted. Other dates given will refer to less diagnostic material or a minor component of the collection. Where lithic material cannot be reasonably attributed, a Preh(istoric) label is displayed.

The amount of prehistoric pottery is so small that where sherds of different periods are found on the same site, no attempt has been made to highlight which group predominates.

For Iron Age and later sites, the chronological position of the collection can be gauged from the free text.

Where a reasonable number of flints were recorded from a 'pot-boiler' site, a Preh(istoric) attribution is given. Where no obvious lithic material was associated with a 'pot-boiler' spread, the column is left blank, even though on environmental grounds a strong case may be made for a pre-Iron Age date.

**Column 4:** gives the nature of the evidence. (see Abbreviations)

### FELTWELL

**Column 5:** provides a guide to the soil encountered on the site. The terms used are loose rather, than the specific categories used by the Soil Survey (for which see Hodge et al. 1984, 406).

**Column 6:** records the approximate height of each site. It should be stressed that these approximations are generally based on comparisons with known spot-heights shown on large-scale Ordnance Survey maps. Alternatively it has been established that in parts of the Wissey Embayment the peat is now at about 0.6m above OD and this has been used as a guide to the calculations for sites on the edge of the fen.

**Column 7:** records the approximate area of each site, based on the paced measurements taken during the site visit.

**Column 8:** records the number of artefacts found and their total weight. A letter code alongside the totals indicates the artefact type (see Abbreviations). Where there is no code the artefact type is that shown in the page heading

**Free Text:** provides additional information, dimensions and the entry ends with the relevant Norfolk SMR entry number.

GAZETTEER: STANDARD ABBREVIATIONS

Column 1: Site no.

Corresponding to numbers  
on relevant parish map.

Column 2: Grid ref.

All grid refs refer to OS square  
TL unless indicated otherwise.

Column 3: Date

Pal = Palaeolithic  
Mes = Mesolithic  
(E)N = (Earlier) Neolithic  
Bkr = Beaker  
BA = Bronze Age  
LNEBA = Late Neo-Early Bronze Age  
IA = Iron Age  
RB = Romano-British

Sax = Saxon  
Med = Medieval  
PM = Post-medieval  
Preh = Prehistoric  
? = Uncertain date  
E = Early  
M = Middle  
L = Late

Column 4: Nature

SS = Surface scatter  
CF = Chance find  
CMK = Cropmark  
SMK = Soilmark  
PMK = Parchmark  
(AP) = Observation derived from  
Aerial photograph

EWK = Earthwork  
BLD = Building  
EXC = Excavation  
SV = Salvage work  
FC = Fieldworker collection  
NE = Not extant

Column 5: Soil

P = Peat  
S = Sand  
C = Chalk  
G = Gravel  
CM = Chara Marl  
SS = Sandstone soil  
St = Silt

SL = Sandy Loam  
StL = Stony Loam  
GL = Gravelly Loam  
Chl = Chalky loam  
CL = Clayey loam  
GS = Gravelly Sand  
PGL = Peat over gravelly loam

Column 6: Height

Shown in metres above O.D.

Column 7: Area

Shown in hectares

Columns 8 & 9: Artefacts

(P) = Pot

(F) = Flint

(B) = Briquetage

Weight shown in grammes.

Predominant artefact type specified at head of column. Otherwise type indicated alongside totals.

### Other Abbreviations

AP = Aerial photograph	wt = weight
approx = approximately	ht = height
c = circa	l = length
C = century	(k)g = (kilo)gramme
conc = concentration	ha = hectare
diam = diameter	m = metre
dimens = dimensions	OD = Ordnance Datum
est = estimate/estimated	N = North
excvn = excavation	S = South
excvd = excavated	E = East
frag(s) = fragment(s)	W = West
max = maximum	
min = minimum	
med = medieval	BM = British Museum
mus = museum	KLM = King's Lynn Museum
occ = occasional	CUC = Cambridge University Committee for Aerial Photography
post-med = post-medieval	NAU = Norfolk Archaeological Unit
pot = pottery	NCM = Norwich Castle Museum
publn = publication	NMR = National Monument Record
publd = published	NRO = Norfolk Record Office
rect = rectangular	SMR = Sites and Monuments Record
v = very	

### NORFOLK PARISH ABBREVIATIONS

DMW - Downham West  
DVR - Denver  
FWL - Feltwell  
HCW - Hockwold  
HLG - Hilgay  
MTW - Methwold  
NDH - Nordelph  
NWD - Northwold  
SRY - Southery  
VPW - Upwell

FELTWELL

No.	Grid.Ref.	Date	Nature	Soil	Height	Area	(F) no	wt
1	6573 8823		SS	GS	1.5	0.04	3	0.02
	<p>Conc of "pot-boilers" on W edge of island. Min dimens 37m N/S x 14m E/W. SMR no. 19691</p>							
2	6477 8802		SS	GS	0.7	0.08	5	0.02
	<p>Sparse scatter of "pot-boilers" and a couple of flints on NE side of island. Max dimens 33m NW/SE x 20m NE/SW. SMR no. 19817/c2</p>							
3	6481 8798		SS	GS	0.7	0.02	1	0.02
	<p>Sparse scatter of "pot-boilers" and odd flint in NE side of island. Max dimens 20m NW/SE x 10m NE/SW. SMR no. 19817/c3</p>							
4	6498 8787		SS	G	0.7	0.03	2	0.02
	<p>Sparse scatter of "pot-boilers" and a couple of flints on a low ridge. Max dimens 35m NW/SE x 10m NE/SW. SMR no. 19817/c4</p>							
5	6495 8772	<b>Mes/EN</b>	SS	GS	0.7	0.19	15	0.05
	<p>Sparse scatter of "pot-boilers" and a few flints, particularly at NW extremity of spread which lies on a narrow ridge. Max dimens 120m NW/SE x 20m NE/SW. SMR no. 19817/c5</p>							
6	6707 8802		SS	GS	0.9	0.03	1	0.01
	<p>Scatter of "pot-boilers" and a single flint stretching across ridge. Max dimens 35m N/S x 12m E/W. SMR no. 19890</p>							
7	6703 8799		SS	GS	0.9	0.02		
	<p>Moderate scatter of "pot-boilers" spreading across ridge. Max dimens 25m NW/SE x 10m NE/SW. SMR no. 19891</p>							
8	6701 8796		SS	GS	0.8	0.02		
	<p>Sparse spread of "pot-boilers" at end of ridge. Max dimens 15m diam. SMR no. 19888</p>							

I: A7

FELTWELL

No.	Grid.Ref.	Date	Nature	Soil	Height	Area	(F) no	wt
9	6693 8797		SS	GS	1.2	0.01	(P) 1	0.00
<p>Sparse "pot-boilers" and rare flint all over small island of gravelly sand with a few patches of chalky loam. Max dimens 15m N/S x 10m E/W. SMR no. 19900</p>								
10	6693 8801		SS	GS	1.2	0.01	1	0.02
<p>Sparse spread of "pot-boilers" on gravelly sand island with some patches of clayey loam. Max dimens 24m SW/NE x 6m NW/SE. SMR no. 19901</p>								
11	6694 8804		SS	GS	1.2	0.01		
<p>On gravelly sand patch on a clayey loam ridge, a spread of "pot-boilers". Max dimens 11m NW/SE x 9m NE/SW. SMR no. 19902</p>								
12	6692 8803		SS	GS	1.2	0.01		
<p>Moderate scatter of "pot-boilers" at end of ridge. Max dimens 10m diam. SMR no. 19903</p>								
13	6250 8970	Mes LNEBA	SS	GS	0.6	0.10	19	0.04
<p>"Pot-boiler" spread with some flints (including frag of shaft-hole implement) on a sandy patch of an island, otherwise predominantly sandy loam. Max dimens 52m NE/SW x 25m NW/SE. SMR no. 19957</p>								
14	6538 8852		SS	GS	0.8	0.01	2	0.02
<p>Moderate spread of "pot-boilers" and a couple of flints on SE side of island. Max dimens 14m NW/SE x 11m NE/SW. SMR no. 20048</p>								
15	6530 8851		SS	GS	0.8	0.01		
<p>Small scatter of "pot-boilers" on S flank of island. Max dimens 12m NW/SE x 10m NE/SW. SMR no. 20047</p>								



FELTWELL

No.	Grid.Ref.	Date	Nature	Soil	Height	Area	(F) no	wt
16	6531 8845		SS	GS	0.8	0.01	4	0.02
<p>Sparse scatter of "pot-boilers" and a few flints on S side of island. Max dimens 10m NE/SW x 8m NW/SE. SMR no. 20046</p>								
17	6438 8869	Preh	SS	GL	0.9	0.05	15	0.13
<p>Flint conc on E slope of island. Max dimens 25m NW/SE x 23m NE/SW. SMR no. 20042/c3</p>								
18	6447 8866	N	SS	GS	0.7	0.06	35	0.40
<p>Moderate scatter of flint on gentle E slope of island. Max dimens 36m NW/SE x 22m NE/SW. SMR no. 20042/c4</p>								
19	6619 8783		SS	GS	0.9	0.02	1	0.01
<p>Moderate scatter of "pot-boilers" on S edge of island. Max dimens 55m E/W x 5m N/S. SMR no. 20105/c2</p>								
20	6629 8787		SS	GS	1.1	0.05	1	0.01
<p>Abundant spread of "pot-boilers" on S edge of island. Max dimens 36m N/S x 19m E/W. SMR no. 20105/c3</p>								
21	6689 8798		SS	GS	0.7	0.01		
<p>Moderate spread of "pot-boilers" over small ridge. Max dimens 13m N/S x 9m E/W. SMR no. 20225</p>								
22	6688 8795		SS	GS	0.7	0.01		
<p>Moderate spread of "pot-boilers" on ridge. Max dimens 12m diam. SMR no. 20226</p>								
23	6678 8794		SS	GS	0.8	0.02		
<p>Moderate spread of "pot-boilers" on E side of ridge. Max dimens 26m NE/SW x 10m NW/SE. SMR no. 20227</p>								

FELTWELL

No.	Grid.Ref.	Date	Nature	Soil	Height	Area	(F) no	wt
24	6679 8797		SS	GS	0.8	0.01		
	Moderate spread of "pot-boilers" on ridge. Max dimens 16m N/S x 10m E/W. SMR no. 20228							
25	6397 8820		SS	GS	0.6			
	Very small spread of "pot-boilers" turned up by plough over area of no more than 2sqm. Sand surface of ridge flush with peat. SMR no. 20888							
26	6920 9145	EN	SS	GS	1.3	0.08	46	0.32
		Preh					(P) 1	0.01
	Moderate spread of flints, including one leaf arrowhead, sparse "pot-boilers", odd frag of pot and very sparse bone frags on ridge and spreading on to adjacent island. Max dimens c 50m x 20m. SMR no. 20981/c9							
27	6923 9144		SS	GS	1.6	0.04	6	0.03
	Moderate to abundant spread of "pot-boilers" with sparse flints on ridge above peat. Max dimens 18m N/S x 25m E/W. SMR no.20981/c10							
28	6923 9154	Mes/EN	SS	GS	1.4	0.04	21	0.17
	Sparse scatter of flints and "pot-boilers", though latter abundant in one locality, and odd frags of bone. On side of ridge. Max dimens 30m NW/SE x 15m NE/SW. SMR no. 20981/c11							
29	6924 9158	Mes ?LNEBA	SS	GS	1.3	0.07	87	0.49
		Preh					(P) 4	0.02
	Moderate spread of flints and "pot-boilers" with occ frags of bone and pot. On ridge above peat. Max dimens 35m NW/SE x 25m NE/SW. SMR no. 20981/c12							
30	6934 9155	?EN	SS	GS	1.3	0.02	12	0.13
	Moderate spread of "pot-boilers", sparse flint and the occ frag of bone. On ridge above peat hollow. Max dimens 20m E/W x 10m N/S. SMR no. 20981/c13							

I: AIO

FELTWELL

No.	Grid.Ref.	Date	Nature	Soil	Height	Area	(F) no	wt
31	6937 9154	Mes/EN	SS	GS	1.4	0.02	34	0.25
<p>Sparse to moderate flint scatter with "pot-boilers" and bone, on side of ridge above peat hollow. Max dimens 18m NW/SE x 16m NE/SW. SMR no. 20981/c14</p>								
32	6930 9155	Mes LNEBA	SS	GS	1.5	0.02	41	0.20
<p>Sparse to moderate spread of flints with sparse "pot-boilers" and very sparse bone, on edge of peat hollow. Max dimens 28m SW/NE x 10m NW/SE. SMR no. 20981/c15</p>								
33	6927 9153	Mes/EN LNEBA	SS	GS	1.3	0.05	28	0.21
<p>Sparse to moderate scatter of flint, with moderate quantity of "pot-boilers" and sparse bone frags, on side of ridge. Max dimens 28m N/S x 24m E/W. SMR no. 20981/c16</p>								
34	6928 9150	Preh	SS	GS	1.1	0.02	26	0.16
<p>Sparse scatter of flint and "pot-boilers" and very sparse bone on side of ridge where it bulges out into peat. Max dimens 20m NW/SE x 12m NE/SW. SMR no. 20981/c17</p>								
35	6936 9145	Preh	SS	GS	1.1	0.02	17	0.13
<p>Sparse scatter of flints and "pot-boilers" with occ frag of bone; a small site on edge of ridge. Max dimens 22m E/W x 10m N/S. SMR no. 20981/c18</p>								
36	6936 9133	LN LNEBA	SS	GS	1.3	0.07	81	0.63
							(P) 1	0.01
<p>Moderate spread of flint, including one chisel and one oblique arrowhead, with only occ "pot-boiler" and bone frag and one sherd of pot. On edge of peaty hollow. Max dimens 32m N/S x 29m E/W. SMR no. 20981/c19</p>								
37	6934 9140		SS	GS	1.1	0.03	9	0.08
<p>Sparse to moderate "pot-boilers" and sparse flints on side of ridge above peaty hollow. Max dimens 25m E/W x 15m N/S. SMR no. 20981/c20</p>								

I: AII

FELTWELL

No.	Grid.Ref.	Date	Nature	Soil	Height	Area	(F) no	wt
38	6933 9133	LNEBA	SS	GS	1.3	0.04	43	0.38
Moderate conc of flint on edge of ridge. Max dimens 24m N/S x 20m E/W. SMR no. 20981/c21								
39	6992 9226	LNEBA	SS	C	2.4	0.07	65	0.38
		RB					(P) 2	0.01
Moderate spread of flint with sparse "pot-boilers", very sparse bone and three sherds (inc 1 Samian). On E side of chalk ridge above peat hollow. Max dimens 38m N/S x 30m E/W. SMR no. 20980/c7								
40	6990 9224	LNEBA	SS	C	2.5	0.03	67	0.57
Sparse to moderate spread of flint (probably of Bkr period), sparse "pot-boilers" and bone and one sherd of pot. Some overlap with FWL 39. On side of ridge. Max dimens 40m N/S x 25m E/W. SMR no. 20980/c8								
41	6987 9230	Preh	SS	C	2.5	0.03	26	0.15
Sparse conc of flint with a few "pot-boilers" on side of ridge. Max dimens 22m N/S x 17m E/W. SMR no. 20980/c9								
42	6976 9235	LNEBA	SS	C	2.5	0.09	59	0.49
		RB					(P) 2	0.02
Sparse to moderate spread of flint and "pot-boilers" and several sherds (inc 1 Samian). On chalky ridge, spreading down into hollow. Min dimens 38m E/W x 30m N/S. SMR no. 20980/c10								
43	6997 9215	RB Preh	SS	C	2.9	0.40	(P) 53 (P) 2	0.38
Sparse to moderate spread of pot and a couple of tile frags. On chalky ridge. Min dimens 90m N/S x 48m E/W. SMR no.20980/c11								

I: AI2

FELTWELL

No.	Grid.Ref.	Date	Nature	Soil	Height	Area	(F) no	wt
44	6977 9224	Mes LNEBA	SS	C	2.6	0.22	47	0.44
		RB					(P) 1	0.01
<p>Sparse to moderate spread of "pot-boilers" and flint with odd potsherd (including 1 RB?) on chalky ridge and down into hollow on E. Max dimens 61m E/W x 46m N/S. SMR no. 20980/c12</p>								
45	6991 9229	Preh	SS	C	2.6	0.05	18	0.14
		RB					(P) 6	0.02
<p>Sparse spread of flint and "pot-boilers" with incidental RB pot; on edge of ridge above gully. Max dimens 31m E/W x 20m N/S. SMR no. 20980/c15</p>								
46	6986 9215		SS	C	2.3	0.05	20	0.30
<p>Moderate conc of "pot-boilers" with sparse flint on side of ridge. Max dimens 31m E/W x 21m N/S. SMR no. 20980/c14</p>								
47	6961 9225	N	SS	C	2.3	0.05	30	0.27
<p>Sparse to moderate conc of flints and "pot-boilers" and stone axe frag on edge of slight ridge. Max dimens 25m N/S x 28m E/W. SMR no. 20980/c15</p>								
48	6930 9245		SS	ChL	1.2	0.04	7	0.08
<p>Abundant spread of "pot-boilers" with only the odd flint (including leaf arrowhead) on ridge just emerging from peat. Min dimens 35m E/W x 15m N/S. SMR no. 20979/c5</p>								
49	6924 9246	Preh	SS	ChL	1.0	0.01	16	0.15
<p>Small spread of flints with occ pot boiler on ridge just showing above peat. Max dimens 13m E/W x 10m N/S. SMR no. 20979/c6</p>								
50	6914 9253	EN	SS	ChL	0.9	0.16	99	0.63
							(P) 11	0.04
<p>Spread of flint and occ frags of pot across two adjacent low ridges. Max dimens 100m NW/SE x 30m NE/SW. SMR no. 20979/c7</p>								

FELTWELL

No.	Grid.Ref.	Date	Nature	Soil	Height	Area	(F) no	wt
51	6933 9259	Mes/EN LNEBA	SS	ChL	1.8	0.04	67	0.52
		LNEBA					(P) 3	0.00
<p>Sparse to moderate spread of flints (including awl and unfinished arrowhead) with a few "pot boilers", pot (Bkr) and bone frags on top of ridge. Max dimens 22m E/W x 22m N/S. SMR no. 20979/c8</p>								
52	6926 9264	Preh	SS	ChL	1.6	0.04	75	0.55
<p>Sparse to moderate spread of flint and bone with a few "pot-boilers" on edge of ridge above peaty hollow. Max dimens 30m E/W x 17m N/S. SMR no. 20979/c9</p>								
53	6930 9247	Mes/EN LNEBA	SS	ChL	0.8	0.09	59	0.39
							(P) 6	0.02
<p>Sparse to moderate spread of flint and bone with a little pot (mainly Bkr) and a few "pot-boilers" on a ridge just emerging from the peat. Min dimens 34m E/W x 22m N/S. SMR no. 20979/c10</p>								
54	6970 9140	BA IA RB	SS	CL	2.2	0.37	41	0.57
							(P) 120	0.66
							(P) 2	0.02
<p>On a chalk ridge, a moderate evenly spaced spread of flint with sparse to moderate "pot-boilers" and also spread of IA pot and frags of bone and burnt pebbles. On chalky ridge. Max dimens 79m N/S x 59m E/W. SMR no. 20992/c2</p>								
55	6971 9151		SS	CL	1.7	0.03	5	0.07
<p>Moderate and even spread of "pot-boilers" with a few flints on the side of ridge and running down into hollow. Max dimens 19m N/S x 19m E/W. SMR no. 20992/c5</p>								
56	6964 9158	BA	SS	CL	1.6	0.13	129	2.20
<p>Sparse to moderate conc of "pot-boilers" and flints on gentle W facing slope; may be a composite spread of at least two concs of material. Dimens c 40m diam. SMR no. 20992/c6</p>								

FELTWELL

No.	Grid.Ref.	Date	Nature	Soil	Height	Area	(F) no	wt
57	6897 9003	Preh	SS	CL	1.2	0.09	39	0.32
<p>Sparse to moderate conc of flints and "pot-boilers" on N side of ridge. Max dimens 48m N/S x 26m E/W. SMR no. 20999</p>								
58	6892 8990	Preh	SS	CL	1.0	0.12	46	0.34
<p>Sparse to moderate spread of flint and "pot-boilers" scattered along ridge with dense conc close to centre. Max dimens 65m E/W x 43m N/S SMR no. 11245/cl</p>								
59	6865 9004	Mes/EN <b>LNEBA</b>	SS	ChL	1.0	0.04	23	0.16
<p>Sparse to moderate spread of flints (including a scale-flaked knife) with a few "pot-boilers" and one bone frag. On small ridge. Max dimens 20m E/W x 15m N/S. SMR no. 21000</p>								
60	6940 9054	EN <b>LNEBA</b>	SS	ChL	1.4	0.07	51	0.56
<p>Sparse to moderate spread of flint with sparse "pot-boilers" and odd frags of bone on side of ridge. Min dimens 31m E/W x 30m N/S. SMR no. 5190/c4</p>								
61	6940 9066	?Mes/EN <b>LNEBA</b>	SS	ChL	1.1	0.15	90	0.96
<p>Sparse but locally moderate spread of flint and "pot-boilers" with several bone frags on ridge. Some indications that a composite site. Max dimens 52m E/W x 47m N/S. SMR no. 5190/c5</p>								
62	6945 9067		SS	CL	0.9	0.08	6	0.04
<p>Moderate to abundant spread of "pot-boilers" with a few flints, on ridge, particularly on its S side. Max dimens 32m E/W x 25m N/S. SMR no. 5190/c6</p>								
63	6947 9068	Preh	SS	CL	0.8	0.03	26	0.28
<p>Sparse conc of flints with a few "pot-boilers" and frags of bone, on low ridge. Min dimens 22m N/S x 15m E/W. SMR no. 5190/c7</p>								

I: BI

FELTWELL

No.	Grid.Ref.	Date	Nature	Soil	Height	Area	(F) no	wt
-----	-----------	------	--------	------	--------	------	--------	----

FELTWELL

No.	Grid.Ref.	Date	Nature	Soil	Height	Area	(F) no	wt
64	6297 8901	Preh	SS	GS	2.1	0.05	34	0.20
<p>Sparse conc of flints and "pot-boilers" on gently sloping NW face of island. Max dimens 39m NW/SE x 19m NE/SW. SMR no. 21035/c2</p>								
65	6298 8904		SS	GS	2.1	0.10	11	0.06
<p>Abundant "pot-boilers" with a few flints, not quite overlapping with FWL 64. On NW side of island. Min dimens 45m NW/SE x 29m NE/SW. SMR no. 21035/c3</p>								
66	6302 8906		SS	GS	1.5	0.03		
<p>Moderate to abundant spread of "pot-boilers", on N slope of island and entirely separate from FWL 65. Max dimens 28m NW/SE x 13m NE/SW. SMR no. 21035/c4</p>								
67	6293 8917		SS	GS	0.9	0.06		
<p>Abundant spread of "pot-boilers" on small island, newly emerged from peat. Max dimens 55m NW/SE x 13m NE/SW. SMR no. 21035/c5</p>								
68	6283 8930	Mes/EN	SS	GS	1.2	0.02	17	0.19
<p>Small conc of flints on S edge of island. Max dimens 19m NW/SE x 11m NE/SW. SMR no. 21035/c6</p>								
69	7010 9170	<b>RB</b>	SS	C	3.2	0.45	(P) 95	0.91
<p>Conc of RB pot with a few tiles as well as sparse oyster shell and bones. Also occ flint of earlier date. On slight knoll which protrudes W towards fen. Min dimens 155m N/S x 40m E/W. Trial excavations in 1958 and again in 1960 revealed tiled floor, frags of pewter bowl, inhumation burial and possible Pagan Saxon pottery, as well as Roman pottery and animal bones. Calvin Wells considered bones more likely to be Iron Age than Saxon. SMR no. 5210/c6</p>								
70	6996 9150	<b>IA</b>	SS	ChL	3.0	0.10	(P) 25	0.07
<p>Sparse scatter of IA sherds with occ bone frags on chalky platform. Min dimens 90m N/S x 15m E/W. SMR no. 21084/c3</p>								

I: B2

FELTWELL

No.	Grid.Ref.	Date	Nature	Soil	Height	Area	(F) no	wt
-----	-----------	------	--------	------	--------	------	--------	----



**FELTWELL**

No.	Grid.Ref.	Date	Nature	Soil	Height	Area	(F) no	wt
71	6984 9135	Preh	SS	ChL	3.0	0.88	17	0.13
			<b>IA</b>				(P) 106	0.51
			Sparse to moderate spread of pot and burnt, broken pebbles with a few (?earlier) "pot-boilers" and flints on chalky plateau. Min dimens 110m E/W x 90m N/S. SMR no. 21084/c2 & 21084/c4					
72	6943 9252	Mes/EN	SS	ChL	1.3	0.05	55	0.34
			<b>LNEBA</b>					
			Sparse spread of flints, perhaps Bkr period, "pot-boilers" and bone on edge of ridge above peat. Max dimens 33m E/W x 20m N/S. SMR no. 21083/c6					
73	6933 9099	?Mes/EN	SS	ChL	1.8	0.08	61	0.66
			<b>LNEBA</b>					
			Moderate spread of flints with sparse to moderate "pot-boilers" and two bone frags on N side of ridge. Max dimens 35m N/S x 35m E/W. SMR no. 14641/c8					
74	6927 9090	Preh	SS	ChL	1.6	0.07	26	0.36
			Sparse to moderate conc of flint and "pot-boilers" on S side of ridge. Max dimens 34m E/W x 25m N/S. SMR no. 14641/c9					
75	6920 9075	?Mes	SS	GS	1.0	0.10	65	0.57
			<b>LNEBA</b>					
			On a prominent ridge, a sparse to moderate scatter of flints, including petit tranchet, and "pot-boilers" with at least three specific concs of pot boilers, all c 10m diam. Max dimens 80m E/W x 20m N/S. SMR no. 14641/c10					
76	6926 9077	?EN	SS	GS	1.4	0.07	21	0.18
			Sparse conc of flints with occ "pot-boilers" on ridge. Max dimens 30m diam. SMR no. 14641/c11					

I: B3

**FELTWELL**

No.	Grid.Ref.	Date	Nature	Soil	Height	Area	(F) no	wt
-----	-----------	------	--------	------	--------	------	--------	----

FELTWELL

No.	Grid.Ref.	Date	Nature	Soil	Height	Area	(F) no	wt
77	6924 9070	?Mes/EN LNEBA	SS	GS	1.0	0.05	27	0.14
<p>Sparse to moderate conc of flints, including scale-flaked knife and barbed and tanged arrowhead, and "pot-boilers". On low ridge above peat. Max dimens 31m E/W x 20m N/S. SMR no. 14641/c12</p>								
78	6925 9074	Mes LNEBA/BA	SS	GS	1.2	0.03	28	0.20
<p>Sparse to moderate spread of flints and sparse "pot-boilers" with occ bone frag. On S face of ridge. Denser spread of flints than adjacent FWL 75 and separated from FWL 79 by sterile clay loam. Max dimens 19m N/S x 21m E/W. SMR no. 14641/c13</p>								
79	6927 9072	Preh	SS	GS	1.3	0.03	28	0.21
<p>Sparse to moderate spread of flint and "pot-boilers" on S side of ridge. Max dimens 17m E/W x 25m N/S. SMR no. 14641/c14</p>								
80	6980 9270	RB	SS	C	4.5	0.88	(P) 129	1.34
<p>Conc of RB pot (C3-C4) with some bone and odd frags of tile. Also some post-med rubbish associated with Whiteplot Farm, and at W end some poss IA sherds as well. On flattish chalk ledge just NE of fen edge. Min dimens 170m E/W x 80m N/S. SMR no. 21137</p>								
81	6946 9238	Preh	SS	Chl	1.2	0.04	35	0.18
<p>Sparse conc of flint with occ frags of bone, "pot-boilers" and pot on low ridge slope above peat hollow. Max dimens 22m E/W x 25m N/S. SMR no. 21083/c11</p>								
82	6940 9233	Mes LNEBA	SS	Chl	1.0	0.03	29	0.25
<p>Sparse conc of flints with a few "pot-boilers" and 2 bone frags on ridge. Max dimens 17m N/S x 25m E/W. SMR no. 21083/c12</p>								

I: B4

FELTWELL

No.	Grid.Ref.	Date	Nature	Soil	Height	Area	(F) no	wt
-----	-----------	------	--------	------	--------	------	--------	----

FELTWELL

No.	Grid.Ref.	Date	Nature	Soil	Height	Area	(F) no	wt
83	6936 9233	<b>LNEBA</b>	SS	Chl	1.0	0.06	69	0.38
		Preh					(P) 4	0.01
<p>Sparse to moderate spread of flints, including oblique arrowhead, with moderate to abundant "pot-boilers" particularly at N end of scatter as well as few frags of bone and pot, including Bkr; all on ridge above peat. Max dimens 31m E/W x 25m N/S. SMR no. 21083/cl3</p>								
84	6932 9231	<b>EN</b>	SS	Chl	0.8	0.07	89	0.38
		Preh					(P) 2	0.01
<p>Moderate spread of flint (including frag of arrowhead) with a few pot boilers, bone and pot frags on N side of island. Max dimens 33m E/W x 25m N/S. SMR no. 21083/cl4</p>								
85	6989 9238		SS	ChL	1.8	0.10	3	0.06
<p>Moderate conc of "pot-boilers" and a couple of flints on slope of ridge covered by chara marl. Max dimens 44m NE/SW x 30m NW/SE. SMR no. 5169/c3</p>								
86	6975 9255		SS	Chl	1.8	0.03		
<p>Sparse conc of "pot-boilers" on fairly steep slope of ridge covered by chara marl. Max dimens 25m NE/SW x 16m NW/SE. SMR no. 5169/c4</p>								
87	6958 9256	Preh	SS	Chl	1.6	0.06	19	0.09
<p>Sparse conc of flints with occ bone frag and "pot boiler" on marl covered slope above hollow. Max dimens 26m E/W x 27m N/S. SMR no. 21134</p>								
88	6953 9250	Preh	SS	Chl	1.5	0.04	35	0.30
<p>Sparse conc of flint, including unfinished arrowhead, with occ bone and "pot boiler" frags on edge of ridge covered by marl. Max dimens 25m E/W x 20m N/S. SMR no. 21135</p>								
89	6943 9263	<b>LNEBA</b>	SS	Chl	1.4	0.20	83	0.65
<p>Sparse conc of flint with a few bone frags spread evenly across marl-covered ridge top. Max dimens 64m E/W x 41m N/S. SMR no. 5266/cl</p>								

FELTWELL

No.	Grid.Ref.	Date	Nature	Soil	Height	Area	(F) no	wt
-----	-----------	------	--------	------	--------	------	--------	----

FELTWELL

No.	Grid.Ref.	Date	Nature	Soil	Height	Area	(F) no	wt
90	6936 9268	?EN	SS	Chl	1.3	0.50	72	0.51
Moderate spread of flint with "pot-boilers" and bone very sparse. On flat ridge partially marl covered. Max dimens 80m E/W x 77m N/S. SMR no. 21136								
91	6936 9278		SS	Chl	1.8	0.02		
Moderate conc of "pot-boilers" with a few bits of bone on slope of ridge. Max dimens 20m E/W x 12m N/S. SMR no. 5255/c3								
92	7045 9150	IA RB Med	SS	C	7.7		(P) 22 (P) 33 (P) 46	0.06 0.13 0.21
Sherds spread across gentle W-facing chalk hillslope. Some RB and med material, but other sherds suggest large but widely spread ?IA site, the dimens of which cannot be calculated. SMR no. 4923/cl								
93	6927 9129	EN LNEBA	SS	Chl	1.0	0.04	40	0.25
Preh (P) 2 0.01								
Sparse conc of flint, including axe, leaf arrowhead and scale-flaked knife frags, with a few "pot boilers", bone and pot frags on side of ridge above peat. Max dimens 31m E/W x 16m N/S. SMR no. 5197/c9								
94	6921 9127	?LNEBA	SS	Chl	1.0	0.03	19	0.13
Sparse spread of flints and "pot-boilers" with few bone frags on top of ridge. Max dimens 25m E/W x 18m N/S. SMR no. 5197/cl0								
95	6910 9126	Preh Bkr	SS	Chl	0.7	0.03	12	0.05
(P) 2 0.01								
Sparse spread of flints and "pot-boilers" with two frags of pot. On low ridge flush with peat. Max dimens 24m E/W x 18m N/S. SMR no. 5197/cl1								
96	6922 9119		SS	Chl	1.0	0.04	1	0.01
Moderate conc of "pot-boilers" with a few frags of flint and bone at end and on side of ridge. Max dimens 30m N/S x 15m E/W. SMR no. 5197/cl2								

I: B6

FELTWELL

No. Grid Ref. Date Nature Soil Height Area (F) no wt

FELTWELL

No.	Grid.Ref.	Date	Nature	Soil	Height	Area	(F) no	wt
97	6932 9108	?LNEBA	SS	Chl	1.2	0.04	12	0.25
<p>Sparse spread of "pot-boilers" with a few frags of flint and bone on gently sloping ridge above peat inlet. Max dimens 30m N/S x 15m E/W. SMR no. 5197/c13</p>								
98	6917 9116		SS	Chl	0.7	0.01	4	0.06
<p>Sparse to moderate spread of "pot-boilers" with just a few (?unassociated) flints on broad ridge just emerging from peat. Max dimens 17m E/W x 11m N/S. SMR no. 5197/c14</p>								
99	6924 9112		SS	Chl	0.9	0.05	3	0.02
<p>Moderate conc of "pot-boilers" with a few flints and bone frags on curving ridge above peat. Max dimens 39m NW/SE x 15m NE/SW. SMR no. 5197/c15</p>								
100	6924 9109		SS	Chl	1.1	0.04	5	0.08
<p>Sparse to moderate conc of "pot-boilers" while bone and flint very sparse. On side of ridge. Max dimens 33m NE/SW x 15m NW/SE. SMR no. 5197/c16</p>								
101	6924 9097		SS	Chl	0.9	0.10	4	0.07
<p>Moderate, locally abundant, spread of "pot-boilers" with only a couple of flints, on curving ridge. Max dimens 53m N/S x 25m E/W. SMR no. 5197/c17</p>								
102	6920 9094		SS	Chl	1.3	0.16	40	0.41
<p>Moderate, locally abundant spread of pot boilers, with a few frags of bone and flint, mainly around edge of "pot-boilers" on flat "plateau-like" ridge. Max dimens 47m N/S x 44m E/W. SMR no. 5197/c18</p>								
103	6915 9085		SS	Chl	1.3	0.12	25	0.30
<p>Moderate spread of "pot-boilers" with a few flints appearing in patches and rare frags of bone. On plateau of chalky drift material, with occasional sandy patches. Max dimens 44m NE/SW x 36m NW/SE. SMR no. 5197/c19</p>								

I: B7

FELTWELL

No. Grid Ref. Date Nature Soil Height Area (F) no wt

FELTWELL

No.	Grid.Ref.	Date	Nature	Soil	Height	Area	(F) no	wt	
104	6910 9074		SS	Chl	1.0	0.01	3	0.07	
<p>Sparse to moderate spread of "pot-boilers" and a few flints; patches of "pot-boilers" and charcoal show as small dense accumulations. On slight ridge just emerging from peat. Max dimens 14m E/W x 12m N/S. SMR no. 5197/c20</p>									
105	6917 9103	LN	SS	Chl	1.3	0.04	34	0.40	
<p>Sparse conc of flint and "pot-boilers" with rare frag of bone on level skirtland. Max dimens 26m NW/SE x 22m NE/SW. SMR no. 5197/c21</p>									
106	6910 9086	Preh	SS	Chl	1.3	0.05	14	0.16	
<p>Sparse flints and sparse to moderate "pot-boilers" on flattish plateau. Max dimens SMR no. 5197/c22</p>									
107	6905 9077	LNEBA EN ?BA	SS	Chl	1.1	0.12	79	0.77	
							EN Bkr EBA Preh	(P) 18	0.09
<p>Along a narrow ridge a conc of flint (sparse to moderate) "pot-boilers" (moderate, locally abundant) bone and pottery. Min dimens 90m E/W x 15m N/S. SMR no. 5197/c23</p>									
108	6909 9108		SS	Chl	?	0.05	5	0.07	
<p>Sparse to moderate "pot-boilers" with a few flints on a curving ridge. Max dimens 36m NE/SW x 16m NW/SE. SMR no. 5197/c24</p>									
109	6982 9082		SS	Chl	2.6	0.03	3	0.03	
<p>Sparse conc of "pot-boilers" with a few flints on slope above peat-filled stream course. Max dimens 19m diam. SMR no. 21195</p>									

FELTWELL

No.	Grid.Ref.	Date	Nature	Soil	Height	Area	(F) no	wt
110	6971 9088	IA	SS	Chl	3-4.0	0.60	(P) 405	2.79
<p>Conc of IA pot (moderate, but locally abundant), some burnt pebbles, bone, two quern frags. Two or possibly three patches where ploughed up flint lumps, and plentiful pottery may indicate house sites. On land sloping gently southwards. Max dimens 170m E/W x 40m N/S. Excavation here in 1962 on two house sites (Shand 1985) SMR no. 5188/c2;c3;c5.</p>								
111	6957 9083	Preh	SS	Chl	1.2	0.04	22	0.27
<p>Sparse spread of flints, "pot-boilers" and bone on edge of ridge dropping down into peat-filled gully. Max dimens 27m N/S x 19m E/W. SMR no. 17571/c1</p>								
112	6956 9080		SS	Chl	0.9	0.05	17	0.20
<p>Sparse to moderate pot boilers, sparse flints and bone on side of ridge. Max dimens 30m N/S x 22m E/W. SMR no. 5195/c2</p>								
113	6933 9072	Mes/EN ?LNEBA	SS		1.1	0.05	31	0.36
<p>Sparse spread of "pot-boilers", flint, including backed knife, and bone and one quern frag on low ridge just emerging from peat. Max dimens 33m E/W x 16m N/S. SMR no. 21202</p>								
114	6940 9076		SS		1.0	0.03		
<p>Sparse to moderate conc of "pot-boilers" with only an occ flint on side of ridge and spreading down to peat. Max dimens 22m N/S x 15m E/W. SMR no. 21201</p>								
115	6946 9139		SS	Chl	1.6	0.14	11	0.09
<p>Sparse spread of "pot-boilers" with a few flints and couple of bone frags on ridge sloping to N. Max dimens 59m N/S x 33m E/W. SMR no. 14646/c4</p>								
116	6951 9145	Preh	SS	Chl	1.5	0.05	22	0.13
<p>Rather sparse spread of "pot-boilers" and flints with a couple of bone frags on gentle slope with some chara marl mixed in. Max dimens 20m N/S x 32m E/W. SMR no. 14646/c5</p>								

FELTWELL

No.	Grid.Ref.	Date	Nature	Soil	Height	Area	(F) no	wt
117	6960 9150		SS	Ch1	1.3	0.04	3	0.06
<p>Sparse, locally moderate, spread of "pot-boilers" with a few flints and bone frags on slope above peat-filled hollow. Max dimens 29m N/S x 18m E/W. SMR no. 14646/c6</p>								
118	6947 9150	LNEBA	SS	Ch1	0.9	0.08	26	0.29
<p>On side of ridge a spread of "pot-boilers" (sparse to S, abundant to N) with a few flints and bone frags. Max dimens 70m N/S x 17m E/W. SMR no. 14646/c7</p>								
119	6346 8875		SS	GS	2.2	0.04		
<p>Sparse to moderate conc of "pot-boilers" on almost flat upper slope of ridge. Max dimens 26m x 15m. SMR no. 21204/c2</p>								
120	6347 8869		SS	GS	1.3	0.05		
<p>Sparse to moderate conc of "pot-boilers" on lower slope of sandhill, just emerging from peat. Max dimens 31m x 17m SMR no. 21204/c3</p>								
121	6343 8867		SS	GS	1.7	0.05		
<p>Sparse to moderate spread of "pot-boilers" on ridge slope. Max dimens 25m NE/SW x 23m NW/SE. SMR no. 21204/c4</p>								
122	6332 8865		SS	GS	1.5	0.05		
<p>Sparse spread of "pot-boilers" on lower slope of ridge. Max dimens 30m x 17m. SMR no. 21204/c5</p>								
123	6324 8864		SS	GS	1.7	0.03		
<p>Small cluster of "pot-boilers" on lower slope of ridge. Max dimens 19m NW/SE x 17m NE/SW. SMR no. 21204/c6</p>								

I: BI0



FELTWELL

No.	Grid.Ref.	Date	Nature	Soil	Height	Area	(F) no	wt
124	6376 8848		SS	GS	1.2-1.8			
<p>Fourteen small spreads of "pot-boilers", (usually sparse, sometimes moderate and, in one case, abundant) all on a gentle slope of island. These range from about 10m x 7m to 26m x 17m in area. In two instances single bone frags were noted, but no flint was recorded. SMR no. 21207</p>								
128	7002 9250	RB	SS	C	c4-5m	0.13	(P) 61	0.42
<p>Conc of RB pot (C2-C3), and few bits of bone but no obvious building material or soil discoloration. On a slight hump with hollow to S and E into which material spreads. Max dimens 48m E/W x 30m N/S. SMR no. 21431</p>								
129	6947 9207	??LNEBA	SS	ChL	1.6	0.10	30	0.23
<p>Sparse to moderate conc of flints and "pot-boilers" with a few bone frags on S slope of ridge, with some marl mixed in. Max dimens 40m N/S x 40m E/W. SMR no. 17193/c7</p>								
130	6850 9025		SS	ChL	1.1	0.11	5	0.08
<p>Sparse to moderate conc of "pot-boilers" and a few flints, not necessarily associated. Mainly on W side of ridge. Max dimens 47m N/S x 25m E/W. SMR no. 21426/c2</p>								
131	6857 8993		SS	ChL	1.4	0.15		
<p>Pot-boiler mound on top of ridge; "pot-boilers" abundant, spreading into peat on either side. Max dimens 53m N/S c 31m E/W. SMR no. 21426/c3</p>								
132	6901 9140	Preh	SS		0.8	0.07	40	0.26
		Bkr					(P) 15	0.06
		LNEBA						
		Preh						
<p>A sparse conc of flints and "pot-boilers" with some potsherds and a couple of bone frags. On two ridges just emerging from peat. Max dimens 32m E/W x 25m N/S. SMR no. 21427/c4</p>								
133	6909 9137		SS	ChL	1.3	0.18	4	0.03
<p>Pot-boiler mound with a few flints on top of ridge. Main conc covers c 20m N/S x 25m E/W but overall area 50m NE/SW x 40m NW/SE. SMR no. 21427/c5</p>								

I: BII

FELTWELL

No.	Grid.Ref.	Date	Nature	Soil	Height	Area	(F) no	wt
134	6903 9127	EN	SS	GS	0.9	0.07	65	0.29
		EN					(P) 9	0.07
<p>Sparse spread of flint with a few frags of pot and bone and a few "pot-boilers" except for one dense patch c 6m diam. Max dimens 32m E/W x 25m N/S. SMR no. 21427/c6</p>								
135	6885 9116	?EN	SS	GS	1.1	0.10	26	0.22
		Preh					(P) 2	0.01
<p>Sparse conc of flint and a few pot and bone frags. Pot-boilers also sparse except for a 5m diam conc at SE end. On top and side of ridge. Max dimens 35m N/S x 31m E/W. SMR no.21427/c8</p>								
136	6889 9109	EN Mes LNEBA	SS	GS	1.1	0.51	182	1.19
		EN Bkr					(P) 116	0.62
<p>Across two parallel ridges, a sparse spread of flint, including piercer, and "pot-boilers" with reasonable quantities of pot and bone. The hollow between the two ridges has sand mixed with peat containing artefacts. Where the sand gives way to loam, material much sparser particularly on E ridge. Max dimens 130m x 50m. SMR no. 21427/c9</p>								
137	6890 9102		SS	GS	1.1	0.11		
<p>Abundant conc of "pot-boilers" on N side of curving ridge. Max dimens 42m E/W x 30m N/S. SMR no. 21427/c10</p>								
138	6891 9094	Preh	SS	GS	1.0	0.04	20	0.08
		Preh					(P) 2	0.01
<p>Sparse conc of flint with a few frags of pot and bone at end of ridge. Max dimens 20m E/W 20m N/S. SMR no. 21427/c11</p>								
139	6907 9172		SS	ChL	1.2	0.09	2	0.03
<p>"Pot-boiler" mound on top of ridge with a few (?unassociated) flints. Max dimens 34m E/W x 29m N/S. SMR no. 21429/c2</p>								

I: BI2

FELTWELL

No.	Grid.Ref.	Date	Nature	Soil	Height	Area	(F) no	wt
140	6903 9191	?EN	SS	ChL	1.3	0.07	27	0.23
		Preh					(P) 2	0.01
<p>Sparse spread of flints with a few "pot-boilers" and a couple of sherds of pot on ridge. Max dimens 41m N/S x 18m E/W. SMR no. 21428/c2</p>								
141	6929 9293	Preh	SS	ChL	1.9	>0.14	14	0.06
		Bkr					(P) 1	0.01
		IA					(P) 98	0.42
		RB					(P) 9	0.06
<p>Sparse to moderate IA pot and bone with sparse burnt pebbles and flint (not contemporary?). On gentle W facing slope. A few frags on knoll to NW. Min dimens 71m N/S x 25m E/W. SMR no.5164/c8</p>								
142	6912 9281	?Mes/EN	SS	ChL	1.0	0.13	96	0.75
		<b>LNEBA</b>						
		LNEBA/Bkr					(P) 4	0.02
		RB					(P) 2	0.01
<p>Sparse conc of flint (?Bkr period) and bone with a few sherds of pot and the occ pot-boiler on side of prominent ridge. Max dimens 45m N/S x 38m E/W. SMR no. 5164/c9</p>								
143	6918 9041	<b>LNEBA</b>	SS	GS	0.9	0.22	29	0.26
		RB					(P) 1	0.01
<p>Sparse conc of flints with "pot-boilers" sparse although locally abundant on W side. Flints mainly on top of sub-circular ridge whilst "pot-boilers" tend to be more around the sides. Max dimens 52m E/W x 48m N/S. SMR no. 22060</p>								
144	6919 9026	?EN	SS	ChL	1.1	0.05	52	0.42
<p>Sparse to moderate conc of flint and sparse "pot-boilers" on side of right-angled ridge. Max dimens 33m NE/SW x 18m NW/SE SMR no. 22061</p>								

FELTWELL

No.	Grid.Ref.	Date	Nature	Soil	Height	Area	(F) no	wt
145	6910 9038	?Mes/EN LN	SS	ChL	0.9	0.02	34	0.32
<p>Sparse conc of flints, including chisel arrowhead and fabricator, and "pot-boilers" set on flattish plateau back from the peat. Max dimens 17m E/W x 16m N/S. SMR no. 22062</p>								
146	6926 9020	LN	SS	ChL	1.0	0.05	11	0.30
<p>Sparse conc of "pot-boilers" and occ flint, including chisel arrowhead, on side of ridge. Max dimens 33m E/W x 21m N/S. SMR no. 5281/c4</p>								
147	6923 9037		SS	ChL	1.0	0.06	3	0.01
<p>Sparse to moderate spread of "pot-boilers" plus occ flint on flat ridge. Max dimens 28m E/W x 25m N/S. SMR no. 5281/c5</p>								
148	6911 9057		SS	ChL	0.7	0.03		
<p>Abundant conc of "pot-boilers" on small chalky-loam ridge with high sand content. Max dimens 22m NW/SE x 20m NE/SW. SMR no. 5162/c5</p>								
149	6908 9056	Preh	SS	ChL	0.8	0.09	33	0.20
<p>Moderate to abundant spread of "pot-boilers" particularly, in NW part of site, and sparse flints over rest. Possibly two discrete areas overlapping? Set on a ridge surrounded by peat. Max dimens 40m NW/SE x 28m NE/SW. SMR no. 5162/c6</p>								
150	6905 9048	?EN Preh	SS	ChL	0.9	0.08	21	0.09
							(P) 1	0.01
<p>Sparse flints, including unfinished arrowhead, and sparse to moderate "pot-boilers" with odd bone frags and one pot sherd on sides and top of ridge. Max dimens 35m N/S x 29m E/W. SMR no. 5162/c7</p>								
151	6908 9022	Preh	SS	SL	0.9	0.10	27	0.28
<p>Sparse spread of "pot-boilers" and flint with a few frags of bone. On side of ridge. Max dimens 37m E/W x 36m N/S. SMR no. 14625/c2</p>								

I: BI4

FELTWELL

No.	Grid.Ref.	Date	Nature	Soil	Height	Area	(F) no	wt
152	6906 9040		SS	ChL	0.7	0.05		
<p>Sparse to moderate "pot-boilers" on side of ridge and into intervening hollow, formerly peat-filled. Max dimens 33m N/S x 18m E/W. SMR no. 14625/c3</p>								
153	6904 9035		SS	ChL	1.0	0.07	6	0.11
<p>Moderate conc of "pot-boilers", sparse flint, including triangular arrowhead, and bone and one RB potsherd. On top of ridge. Max dimens 34m N/S x 24m E/W. SMR no. 14625/c4</p>								
154	6902 9026		SS	ChL	0.8	0.05	5	0.03
<p>Sparse, locally moderate, conc of "pot-boilers" with rare flint, on side of ridge. Max dimens 28m E/W x 21m N/S. SMR no. 14625/c5</p>								
155	6898 9039		SS	ChL	0.7	0.11	4	0.03
<p>Moderate conc of "pot-boilers" with occ flint flake on flat ridge just emerging from peat. Max dimens 38m N/S x 31m E/W. SMR no. 14625/c6</p>								
156	6975 9051		SS	ChL	2.4	0.06		
<p>Sparse to moderate conc of "pot-boilers" on fairly flat skirtland "plateau". Max dimens 30m E/W x 22m N/S. SMR no. 5179/c10</p>								
157	6967 9182	EN	SS	ChL	1.4	0.03	9	0.10
<p>Sparse to moderate conc of "pot-boilers" with rare bone and flint frags including leaf arrowhead. On N side of ridge. Min dimens 27m E/W x 14m N/S. SMR no. 5192/c5</p>								
158	6962 9182	?Mes/EN	SS	ChL	1.4	0.05	13	0.08
<p>Sparse to moderate conc of "pot-boilers" with just a few flints, on edge of ridge. Max dimens 27m N/S x 21m E/W. SMR no. 5192/c6</p>								
159	6958 9175		SS	ChL	1.0	0.04	6	0.11
<p>Sparse conc of "pot-boilers" and a few flints on N side of ridge. Max dimens 29m E/W x 15m N/S. SMR no. 5192/c7</p>								

I: CI

HOCKWOLD

No.	Grid.Ref.	Date	Nature	Soil	Height	Area	(F) no	wt
-----	-----------	------	--------	------	--------	------	--------	----

FELTWELL

No.	Grid.Ref.	Date	Nature	Soil	Height	Area	(F) no	wt
160	6920 9004		SS		1.4	0.07	2	0.01
<p>Moderate, but locally abundant "pot-boilers" and a couple of flints in and around a small hollow, originally peat-filled. Max dimens 36m E/W x 23m N/S. SMR no. 22311/c10</p>								
161	6900 8998		SS		1.1	0.05	4	0.04
<p>Sparse to moderate conc of "pot-boilers" and a few flints on edge of peat-filled hollow. Max dimens 40m N/S x 14m E/W. SMR no. 22311/c11</p>								
162	6899 8991		SS		0.8	0.05		
<p>Moderate to abundant conc of "pot-boilers" at end of ridge edged by peat-filled channels. Max dimens 25m diam. SMR no. 22311/c12</p>								
163	6911 8986		SS		1.1	0.04		
<p>Sparse to moderate conc of "pot-boilers", including newly-disturbed material. Max dimens 21m E/W x 24m N/S. SMR no. 22328</p>								
164	6935 8988		SS		1.8	0.04		
<p>Sparse to moderate conc of "pot-boilers". Min dimens 25m N/S x 16m E/W. SMR no. 22327</p>								
165	6912 9015		SS		1.1	0.15	5	0.04
<p>Sparse to moderate conc of "pot-boilers" and only a couple of flints, extending along ridge above peat. Max dimens 76m E/W x 29m N/S. SMR no. 22312</p>								
166	6901 9016		SS	ChL	0.8	0.05		
<p>Moderate conc of "pot-boilers" on low ridge. Max dimens 23m N/S x 26m E/W. SMR no. 22313</p>								
167	6968 9032		SS		2.1	0.13		
<p>Sparse to moderate conc of "pot-boilers" on gentle S-facing slope. Max dimens 45m N/S x 31m E/W. SMR no. 23176</p>								

I: C2

HOCKWOLD

No.	Grid.Ref.	Date	Nature	Soil	Height	Area	(F) no	wt
-----	-----------	------	--------	------	--------	------	--------	----

FELTWELL

No.	Grid.Ref.	Date	Nature	Soil	Height	Area	(F) no	wt
168	6870 9010		SS	ChL	1.4	0.08		
	Moderate to abundant conc of "pot-boilers" on low ridge. Max dimens 32m NW/SE x 28m NE/SW. SMR no. 23175/c3							
169	6975 9214		SS	ChL	1.6	0.05	6	0.07
	Sparse to moderate conc of "pot-boilers" and odd flint only. Max dimens 23m N/S x 23m E/W. SMR no. 23188							
170	6924 9221		SS		0.9	0.06	8	0.06
	Abundant conc of "pot-boilers" and a few flints on small low ridge projecting into peat. Min dimens 33m N/S x 20m E/W. SMR no. 23185							
171	6325 8850		SS		0.7	0.10		
	Low mound, no more than 0.2m high, consisting of abundant "pot-boiler" frags. On a broad "plateau" of peat-covered mineral soil. Max dimens 38m NW/SE x 37m NE/SW. SMR no. 23650/c2							
172	6348 8823		SS	SL	1.1	0.04		
	Moderate spread of "pot-boilers" on S slope of island. Max dimens 25m NW/SE x 17m NE/SW. SMR no. 23651/c2							
173	6334 8832		SS	SL	1.7	0.04		
	Moderate conc of "pot-boilers" with a few flints on S slope of island. Max dimens 24m NW/SE x 19m NE/SW. SMR no. 23651/c3							
174	6341 8830		SS	SL	1.5	0.05		
	Sparse spread of "pot-boilers" and a few flints on S slope of island. Max dimens 25m NE/SW x 24m NW/SE. SMR no. 23651/c4							
176	6930 9056	Preh	SS	?ChL	1.7	0.07		
	Moderate, locally abundant, "pot-boilers" spread across side of barrow. (FWL 177) Max dimens 35m NE/SW x 22m NW/SE. SMR no. 18576/c2							

I: C3

HOCKWOLD

No.	Grid.Ref.	Date	Nature	Soil	Height	Area	(F) no	wt
-----	-----------	------	--------	------	--------	------	--------	----

FELTWELL

No.	Grid.Ref.	Date	Nature	Soil	Height	Area	(F) no	wt
177	6930 9055	?LN/BA	EWK	ChL	2.0	0.11		
	Low mound c 0.4m higher than surrounding skirtland with 'ditch' 0.2m lower than ground outside. Shows as distinctive soilmark on AP (CUC AP/RC8-EH 147; 5-4-1982). Max dimens 39m E/W x 36m N/S. SMR no. 18576							
178	6955 9028		SS	ChL	2.1	0.04		
	Moderate conc of "pot-boilers" including newly-disturbed material on side and top of ridge above peat-filled hollow. Max dimens 21m N/S x 19m E/W. SMR no. 14623/c3							
179	6859 9024		SS	?GS	1.0	0.09		
	Moderate to abundant spread of "pot-boilers" spread over ridge emerging from peat. Max dimens 38m N/S x 25m E/W. SMR no. 5165/c4							
180	6856 9043	Mes/EN ?LNEBA	SS	?ChL	1.7	0.07	57	0.35
		?LNEBA					(P) 1	0.01
	Sparse to moderate flint spread, including axe, with one potsherd and a few "pot-boilers" on flat 'plateau' of mineral soil just emerging through peat. Max dimens 41m N/S x 36m E/W. SMR no. 5165/c5							
181	6996 9020		SS	ChL	4.0	0.10		
	Sparse conc of "pot-boilers" on edge and across peat-stained hollow but back from fen edge. Max dimens 30m N/S x 29m E/W. SMR no. 5213/c2							
182	6989 9021		SS	ChL	3.7	0.08		
	Sparse conc of "pot-boilers" on flattish ground back from fen edge. Max dimens 30m N/S x 29m E/W. SMR no. 5213/c3							
183	6988 9030		SS	ChL	4.0	0.03		
	Sparse spread of "pot-boilers" on flat ground back from fen edge. Max dimens 25m N/S x 17m E/W. SMR no. 5213/c4							

I: C4

HOCKWOLD

No.	Grid.Ref.	Date	Nature	Soil	Height	Area	(F) no	wt
-----	-----------	------	--------	------	--------	------	--------	----



FELTWELL

No.	Grid.Ref.	Date	Nature	Soil	Height	Area	(F) no	wt
184	7007 9025	IA	SS	ChL	4.0	0.30	(P) 75	0.37
							(F) 3	0.03

Moderate spread of pot, with sparse bone, burnt pebbles and "pot-boilers". Two areas of darker soil with scatter of sherds joining the two. Patches of charcoaly soil suggest active plough damage. On v gentle N facing slope. Max dimens 85m N/S x 39m E/W.  
SMR no. 5213/c8

185	7002 9040		SS	ChL	3.1	0.09		
-----	-----------	--	----	-----	-----	------	--	--

Sparse conc of "pot-boilers" showing as slightly darker soil stain on N side of shallow hollow. Max dimens 38m E/W x 26m N/S.  
SMR no. 5213/c9

186	6996 9026		SS	ChL	3.3	0.04		
-----	-----------	--	----	-----	-----	------	--	--

Sparse conc of "pot-boilers" and a couple of flints (?unassociated) beside a shallow natural gully. Max dimens 24m E/W x 21m N/S.  
SMR no. 5213/c5

187	6862 8955		SS	ChL	0.9	0.04	2	0.02
-----	-----------	--	----	-----	-----	------	---	------

Sparse, locally moderate, conc of "pot-boilers" and a couple of flints on N side and top of skirtland ridge. Max dimens 22m NE/SW x 20m NW/SE.  
SMR no. 14640/c2

188	6849 8935	Preh	SS	ChL	0.9	0.03	4	0.04
-----	-----------	------	----	-----	-----	------	---	------

Sparse conc of "pot-boilers" with a few flints on N side of a curving ridge, projecting above peat level. Max dimens 20m NE/SW x 15m NW/SE.  
SMR no. 14640/c3

189	6961 8952	LNEBA	SS	C	8.4	0.09	23	0.16
-----	-----------	-------	----	---	-----	------	----	------

Sparse to moderate flint with a couple of "pot-boilers" scattered across chalk hillside well back from fen. Max dimens 36m N/S x 27m E/W  
SMR no. 14635/c4

190	6904 8950	RB	SS	C	3.1	0.10	(P) 25	0.23
-----	-----------	----	----	---	-----	------	--------	------

Sparse conc of RB pot with some bone on flat ground a little away from the fen edge. On side of field, probably spreading E under track and bank. Relates to rectilinear system of ditches, parts of which were dug in 1960-62 by F Curtis and Colonel Kelly (USAF). Min dimens 69m NE/SW x >16m NW/SE.  
SMR no. 5160/c12

I: C5

HOCKWOLD

No.	Grid.Ref.	Date	Nature	Soil	Height	Area	(F) no	wt
-----	-----------	------	--------	------	--------	------	--------	----

**FELTWELL**

No.	Grid.Ref.	Date	Nature	Soil	Height	Area	(F) no	wt
191	6880 8940	Preh	SS	ChL	2.2	0.05	24	0.28
<p>Sparse to moderate conc of flint on a gentle slope above a skirtland hollow. Max dimens 34m NE/SW x 18m NW/SE. SMR no. 5160/c11</p>								
192	6964 9100	<b>LN</b>	SS	ChL	1.6	0.05	24	0.25
<p>Sparse to moderate flint, including oblique arrowhead, with a few bone frags and "pot-boilers" set on the S side of a peat-filled hollow. Max dimens 23m E/W x 22m N/S. SMR no. 11238/c6</p>								
193	6962 9195	<b>LNEBA</b>	SS	ChL	1.2	0.05	60	0.53
<p>Moderate conc of flint with a few "pot-boilers" on a peaty 'saddle' between a ridge and a low island. Max dimens 36m E/W x 17m N/S. SMR no. 11238/c7</p>								
194	6956 9192		SS	ChL	0.8	0.05		
<p>Sparse to moderate spread of "pot-boilers" set against a background scatter of flint. On gentle slope above peaty hollow. Max dimens 28m N/S x 19m E/W. SMR no. 11238/c8</p>								
195	6939 9213	Preh	SS	ChL	1.0	0.05	23	0.18
<p>Sparse flint and even sparser "pot-boilers", with a few bone frags on the W side of a low ridge. Max dimens 33m N/S x 17m E/W. SMR no. 5159/c8</p>								
196	6935 9194	<b>LNEBA</b>	SS	ChL	1.3	0.13	48	0.56
<p>Moderate spread of flints and a few "pot-boilers" and frags of bone on S side of ridge sloping down towards peat. Overlaps with FWL 197. Max dimens 46m NE/SW x 32m NW/SE. SMR no. 5159/c5</p>								
197	6932 9193		SS	ChL	1.3	0.06		
<p>Moderate conc of "pot-boilers" overlapping FWL 196 on S side of ridge above peat. Max dimens 26m NW/SE x 25m NE/SW. SMR no. 5159/c6</p>								

I: C6

**HOCKWOLD**

No. Grid.Ref. Date Nature Soil Height Area (F) no wt

FELTWELL

No.	Grid.Ref.	Date	Nature	Soil	Height	Area	(F) no	wt
198	6929 9214	LNEBA	SS	ChL	1.1	0.11	49	0.32
<p>Moderate conc of flints, including one possible Mes core, with a few "pot-boilers" and bone frags, spreading over ridge with peat on both sides. Max dimens 36m NE/SW x 35m NW/SE. SMR no. 5159/c7</p>								
199	6900 9203		SS	ChL	1.0	0.10		
<p>Abundant "pot-boilers" on top and N side of skirtland ridge. Max dimens 37m N/S x 35m E/W. SMR no. 21428/c3</p>								
200	6901 9196		SS	ChL	1.0	0.07		
<p>Abundant "pot-boilers" spread across top and sides of ridge projecting above peat level. Max dimens 35m N/S x 22m E/W. SMR no. 21428/c4</p>								
201	6961 8997	IA RB	SS	C	4.0	0.08	(P) 14 (P) 7	0.04
<p>Spread of IA pot with a few frags of bone and occ burnt pebble on the side and top of a chalk ridge projecting a little above the general level of the ground. Max dimens 39m NE/SW x 22m NW/SE. SMR no. 5219/c4</p>								
202	6915 8981		SS	C	1.6	0.11		
<p>Sparse to moderate "pot-boilers" on flattish area of chalk skirtland, with a shallow natural gully to NW. Max dimens 36m NE/SW x 33m NW/SE. SMR no. 17483/c4</p>								
203	6937 9034		SS	ChL	2.1	0.04		
<p>Sparse conc of "pot-boilers" on edge of distinctive narrow hollow. Max dimens 24m N/S x 21m E/W. SMR no. 22920/c4</p>								
204	6932 9032	LNEBA	SS	ChL	2.1	0.09	64	0.42
<p>Moderate conc of flint, including one possible Mes frag, with sparse "pot-boilers" on edge of a distinctive narrow hollow. Max dimens 35m E/W x 29m N/S. SMR no. 22920/c5</p>								

I: C7

HOCKWOLD

No. Grid Ref. Date Nature Soil Height Area (F) no wt

**FELTWELL**

No.	Grid.Ref.	Date	Nature	Soil	Height	Area	(F) no	wt
-----	-----------	------	--------	------	--------	------	--------	----

205	7015 9040	<b>RB</b>	SS	C	3.5		(P) 18	0.22
-----	-----------	-----------	----	---	-----	--	--------	------

Scatter of RB pot, particularly Samian, (C2-C3) and bone on edge of Roman site, noted in early 1960s. A rectilinear field system noted on N side of road where Curtis found RB rubbish pit and on S side F Curtis located foundations of a Roman building.  
SMR no. 5212;5213/c7; Fieldwork code FWL EX.

U1	6999 9207	IA <b>RB</b>	EXC	ChL				
----	-----------	-----------------	-----	-----	--	--	--	--

Roman villa of stone; simple corridor type dating to C4, excavated in 1964. IA pot, perhaps of C3-C2 BC date, found in soil levels below villa. (Gurney 1986)  
SMR no. 5205/c1

U2	7005 9210	IA <b>RB</b>	EXC	ChL				
----	-----------	-----------------	-----	-----	--	--	--	--

Small bath-house of C4 date with ditch of ?IA date beneath. Destroyed during construction of Cut-off Channel. Gurney 1986.  
SMR no. 5205/c2

U3	6989 9077	IA	SS	ChL			(P) 11	0.05
----	-----------	----	----	-----	--	--	--------	------

Scatter of IA sherds in peaty soil beside old stream course.  
SMR no. 5179/c7; Fieldwork code FWL DZ

U4	7132 9095	<b>RB</b>	EXC	C	>6.1			
----	-----------	-----------	-----	---	------	--	--	--

In 1964 F Curtis excavated hypocaust and other features of bath house on edge of Feltwell village. Foundations elsewhere suggest other Roman buildings over 300m distance. (see Gregory 1982, 369)  
SMR no. 4921

U5	6956 9092	<b>RB</b>	SS	C?				
----	-----------	-----------	----	----	--	--	--	--

In 1960 and 1961 building masonry, tile and RB pot found in limited area bisected by field boundary. On S side of chalk spur.  
SMR no. 5208

U6	7060 9053	<b>Med</b>	EWK	C				
----	-----------	------------	-----	---	--	--	--	--

Moated site on W side of Feltwell village, now surrounded by housing estate. Small-scale digging in 1963 and 1967 produced pot of C13-C14 date; and traces of foundations.  
SMR no. 4925

**HOCKWOLD**

FELTWELL

No.	Grid.Ref.	Date	Nature	Soil	Height	Area	(F) no	wt
U7	7023 9361	?LN/BA	CMK	C	>15			
	7033 9352	?LN/BA	CMK	C	>15			
	7008 9305	?LN/BA	CMK	C	<15			

Group of three ring ditches detected as cropmarks, on spur overlooking fen.  
SMR no.s 16867;12798;12799.

A1 6441 8864 N CF GS

Complete polished stone axe, perhaps Group VI product, found on S side of island in Feltwell Fen.  
SMR no. 20042/c2; Fieldwork code FWL AM.

A2 7015 9076 ES CF C

Bronze cruciform brooch found with IA and ES sherds in 1963.  
SMR no. 5214.

HILGAY

No.	Grid.Ref.	Date	Nature	Soil	Height	Area	no	wt
1	6250 9863	<b>Med</b>	EWK		4.0	3.12		
<p>Earthwork complex in pasture comprising main moat with internal area 0.35 ha., and two smaller ones, two ponds and several linear ditches. On N side of island towards bottom of slope, just above peat line. Max dimens 260m E/W x 120m N/S. SMR no. 4454; Schedule no. Norfolk 342</p>								
2	6293 9842		SS	GS	7.9	0.09	(F) 3	0.02
<p>Sparse, locally moderate spread of "pot-boilers" with a few flints on gentle N slope of island, adjacent to natural peat-stained hollow. Dimens c 50m NW/SE x 20m NE/SW. SMR no. 23442/c2</p>								
3	6400 9808	<b>RB</b>	EWK	?GS	3.5	3.28	(P) 33	0.17
<p>Earthwork complex in pasture consisting of two raised and ditched platforms in a rectangular enclosure, set in a rectilinear field system, a small rectangular enclosure to the E and two sub-circular ditched platforms. Pot recovered from molehills is of ?C3-C4 date. Set below E slope of island on virtually flat ground. Max dimens 230m E/W x 160m N/S. Phillips 1970, 241; Silvester forthcoming. SMR no. 4455</p>								
4	6291 9850		SS	GS	5.5	0.02		
<p>Sparse conc of "pot-boilers" on gentle N slope of island. Min dimens 19m E/W x 12m N/S. SMR no. 23654</p>								
5	6279 9847		SS	SG	6.1	0.08		
<p>Moderate conc of "pot-boilers" with some new and plough-disturbed patches on gentle N slope of island. Max dimens 33m E/W x 28m N/S. SMR no. 23655</p>								
6	6186 9848	<b>Med</b>	SS	SG	5.8	0.19	(P) 72	0.50
<p>Abundant med pot (C11-C13) and a few bits of bone set in a grey-stained soil. Adjacent to lane. Max dimens 70m E/W x 31m N/S. SMR no. 13903/c4</p>								
7	6188 9858	<b>Med</b>	SS	SG	4.5	0.07	(P) 51	0.44
<p>Moderate conc of med pot (late C12-C13), moderate to abundant shell frags (predominantly mussel) and a few sparse bone frags. Close to the fen edge. ?Rubbish tip rather than occupation site. Dimens 35m E/W x 22m N/S. SMR no. 13903/c5</p>								

I: CIO

## HILGAY

No.	Grid.Ref.	Date	Nature	Soil	Height	Area	no	wt
8	6246 9651		SS	SL	4.9	0.17		
	Sparse spread of "pot-boilers" above inlet on E side of island. Max dimens 47m E/W x 42m N/S. SMR no. 24257/c2							
9	6251 9641		SS	SL	4.0	0.06		
	Sparse spread of "pot-boilers" beside inlet on E side of island and close to peat line. Max dimens 29m N/S x 23m E/W. SMR no. 24256							
10	6223 9664	<b>LNEBA</b>	SS	GS	5.5	0.41	(F) 32	0.35
		<b>IA</b>					(P) 52	0.21
	Spreads of IA pot and earlier flint across sandy knoll and down gentle NW side just to N of inlet on E side of island. Material of different periods broadly conterminous as far as could be ascertained at this level of survey. Min dimens 87m E/W x 53m N/S. SMR no. 24258/c3							
11	6218 9659		SS	GS	4.6	0.08		
	Sparse conc of "pot-boilers" above inlet on E side of island. Close to peat level. Max dimens 35m E/W x 26m N/S. SMR no. 24258/c4							
12	.6158 9714		SS	GL	1.8	0.04		
	Sparse to moderate conc of "pot-boilers" on level ground just beyond W edge of island. Max dimens 25m NW/SE x 17m NE/SW. SMR no. 24292							
13	6145 9638	<b>RB</b>	SS	GS	6.1	0.84	(P) 116	1.06
	Spread of pottery, sparse but moderate in places, and some tile. On top and E side of sandy ridge. Max dimens 135m N/S x 70m E/W. SMR no. 23709/c5							
14	6138 9518	<b>RB</b>	SS	GL	5.0	0.20	(P) 51	0.64
	Sparse conc of RB pot and sparse to moderate tile. On E side of ridge just above inlet on E side of island. Max dimens 59m NE/SW x 40m NW/SE. SMR no. 23709/c6							

## HILGAY

No.	Grid.Ref.	Date	Nature	Soil	Height	Area	no	wt
15	6110 9636		SS	SG	4.3	0.09		
	Sparse conc of "pot-boilers" on level ground on W side of island. Max dimens 36m E/W x 29m N/S. SMR no. 24314/c2							
16	6103 9656		SS	StL	3.4	0.06		
	Sparse conc of "pot-boilers" on W side of island, just above present peat line. Dimens 28m NE/SW x 23m NW/SE. SMR no. 24314/c3							
17	6120 9661		SS	SL	3.7	0.07		
	Sparse spread of "pot-boilers" on W side of island where a gradual slope to fen. Max dimens 31m NW/SE x 25m NE/SW. SMR no. 24315/c2							
18	6330 9757	Preh	SS	SL	6.1	0.24	(F) 4	0.02
			RB				(P) 67	0.33
	Diffuse spread of RB pot and some ?tile frags on E-facing slope of island. No visible soil stain. Min dimens 53m E/W x 50m N/S and could be larger with sherds found up to 40m further E. SMR no. 24317/c2							
19	6353 9706		SS	StL	2.1	0.13		
	Sparse spread of "pot-boilers" set in grey-stained soil on almost level ground on E side of island. Max dimens 39m NW/SE x 37m NE/SW. SMR no. 24318/c2							
20	6341 9692		SS	StL	1.5	0.07		
	Sparse, locally moderate spread of "pot-boilers" with slight soil staining. E side of island on flat level close to present edge of peat. Dimens 27m NW/SE x 30m NE/SW. SMR no. 24318/c3							
21	6191 9786	IA	SS	SL	5.8	0.18	(P) 13	0.05
		RB					(P) 17	0.07
		Med					(P) 9	0.07
	Spread of flint-gritted pottery and "pot-boilers" with some med and RB sherds. Conditions for recovery poor. On W side of island. Approx dimens 48m E/W x 42m N/S. SMR no. 24367/c2							



## HILGAY

No.	Grid.Ref.	Date	Nature	Soil	Height	Area	no	wt
U1	6082 9620	Med	NE	SL	4.3			
	Site of Modney Priory, a Benedictine cell of Ramsey, founded before 1291 and dissolved 1539 (Knowles and Hadcock 1971,71). No visible traces, although some years ago Rainbird Clarke suggested a moat to S of present farm buildings. (Norfolk SMR) SMR no. 4459							
U2	6325 9718	Preh	SS	SL	6.0?		(F) 7	0.07
	Small group of flints over area of c 30m diam. On E side of island on slope above fen. SMR no. 23231/c2; Fieldwork code HLG AB							
U3	6369 9696	Preh	SS	StL	1.5		(F) 3	0.04
	One flake and two blades from a small knoll protruding from peat. On E side of Hilgay island. No dimensions. SMR no. 23656; Fieldwork code HLG AP							
U4	6111 9674	Preh	SS	S	0.08?		(F) 2	0.01
	A couple of flint blades on very low sandy ridge only just showing through peat. SMR no. 24135; Fieldwork code HLG BD							
U5	6257 9800	?Med	EWK		c16m			
	Mill mound recorded by OS as being 25m N/S x 15m E/W and 2.3 m high. Loading ramp to E. SMR no. 13456							
U6	6269 9824/c	RB	SS	SL			(P) 6	0.05
	Across W half of field, occ RB sherds suggesting a Roman site nearby. No concs. SMR no. 23368/c1; Fieldwork code HLG AH.							
U7	6024 9740	?Med	EWK	StL	c0.6			
to	6142 9860		SMK					
	Silt ridge about 1.7km long linking Great Ouse with Wissey. At SW end it is 1.1m high, drops rapidly to 0.7m and in Great West Fen is visible only as a soil stain. Close to the Wissey its height increases and beside the Wissey flood bank it appears as a mound. SMR no. 24368							

## HILGAY

No.	Grid.Ref.	Date	Nature	Soil	Height	Area	no	wt
-----	-----------	------	--------	------	--------	------	----	----

A1	6096 9792	Preh	CF	StL	0.06			
----	-----------	------	----	-----	------	--	--	--

Frag of stone, smoothed on one face and shaped on other sides. Perhaps a small saddle quern.  
SMR no. 24499; Fieldwork code HLG CA.

A2	6221 9810/c	<b>E Sax</b>	CF					
----	-------------	--------------	----	--	--	--	--	--

In 1879, undecorated pot with iron and iron spearhead with remains of wooden haft found in churchyard. ?Inhumation burial. The vessel now in CAEM. Norfolk Archaeol 27. 1 (1938), pl 7; 27. 2 (1939), 238. Meaney 1964, 175.  
SMR no. 4453

A3	6258 9802	<b>E Sax</b>	MD	SL	cl6m			
----	-----------	--------------	----	----	------	--	--	--

Copper alloy small long square-headed brooch found 1981 and frags of small long brooch found in 1983.  
SMR no. 17797

HOCKWOLD

No.	Grid.Ref.	Date	Nature	Soil	Height	Area	(F) no	wt
1	6873 8746	LNEBA	SS	GS	1.2?	0.03	31	0.19
<p>Conc of flints, including scale-flaked knife, on low sandy ridge surrounded by peat. Max dimens 28m NE/SW x 15m NW/SE. SMR no. 19599</p>								
2	6875 8752	BA	SS	GS	1.5	0.19	22	0.28
<p>Conc of "pot-boilers" over area of c25m E/W x 20m N/S. Within and beyond a spread of flint. All on sandy ridge. Max dimens 60m NE/SW x 40m NW/SE. SMR no. 19602</p>								
3	6879 8774	Preh	SS	GS	1.0	0.06	13	0.07
<p>Small spread of flints on sand ridge. Dimens 23m E/W x 20m N/S. SMR no. 19601</p>								
4	6877 8774	Preh	SS	GS	1.5	0.11	50	0.26
<p>Conc of flints on sand ridge. Max dimens 55m E/W x 25m N/S. SMR no. 19600</p>								
5	6894 8669	LNEBA	SS	GS	1.0	0.19	21	0.19
<p>Spread of "pot-boilers" across W part of sandy island, some flint, including frag of oblique arrowhead, particularly on lower slope and a few frags of bone. Most of island covered by conifer plantation. Max dimens 90m N/S x 25m E/W. SMR no. 19856</p>								
9	6705 8784		SS	GS	1.6	0.01		
<p>Moderate spread of "pot-boilers" on ridge of gravelly sand. Max dimens 13m N/S x 9m E/W. SMR no. 19889</p>								
10	6809 8785	LNEBA Mes/EN	SS	GS	1.6	0.03	39	0.33
<p>Scatter of flints and some "pot-boilers" on NW slope of sand island. Not convincing as a "site". Max dimens 22m NW/SE x 15m NE/SW. SMR no. 5320/c2</p>								
11	6810 8781		SS	GS	1.3	0.02		
<p>Moderate scatter of "pot-boilers" on island of sandy gravel, just above peat line. Max dimens 19m E/W x 11m N/S. SMR no. 5320/c3</p>								

I: DI

HOCKWOLD

No. Grid.Ref. Date Nature Soil Height Area (F) no wt

HOCKWOLD

No.	Grid.Ref.	Date	Nature	Soil	Height	Area	(F) no	wt
12	6489 8632		SS	GS/CL	2.1	0.14	6	0.05
<p>Two overlapping scatters of material: to W "pot-boilers", to E flint. Most of island composed of clayey loam but flints located on isolated patch of gravelly sand. Max dimens 60m SMR no. 19893</p>								
13	6696 8773		SS	GS	1.2	0.01		
<p>Sparse scatter of "pot-boilers" on sandy ridge. Dimens 11m E/W x 9m N/S. SMR no. 19904</p>								
14	6692 8780		SS	GS	1.2	0.04	13	0.10
<p>Moderate conc of "pot-boilers" with some flint around S edge. On sandy ridge. Max dimens 30m NW/SE x 18m NE/SW. SMR no. 19905</p>								
15	6694 8787		SS	GS	1.5	0.06	2	0.01
<p>Conc of "pot-boilers" with occ flint on ridge of gravelly sand and just extending into clayey loam. Max dimens 30 N/S x 24m E/W. SMR no. 19906</p>								
16	6696 8790		SS	GS	1.5	0.03	2	0.01
<p>Scatter of "pot-boilers" along sandy ridge. Separated from no.15 by area of sterile clayey loam. Max dimens 25m N/S x 13m E/W. SMR no. 19907</p>								
17	6496 8651		SS	GS	1.5-1.8	0.12	3	0.01
<p>Conc of "pot-boilers" and a few flints on N sandy slopes of large island. Most of island is clayey loam. Max dimens 50m E/W x 30m N/S. SMR no. 19899/c2</p>								
18	6580 8555	<b>Mes</b>	SS	GS	0.9-1.3	0.33	246	2.20
		<b>LNEBA</b>						
		LNEBA					(P) 4	0.01
<p>Long ridge of sand covered with variable densities of flint and "pot-boilers", and an odd sherd of pot. More detailed work (Appendix II) produced much fuller information about all periods of activity. Max dimens 165m NE/SW x 20m NW/SE. SMR no. 20054</p>								

HOCKWOLD

No. Grid Ref. Date Nature Soil Height Area (F) no wt

HOCKWOLD

No.	Grid.Ref.	Date	Nature	Soil	Height	Area	(F) no	wt
19	6687 8744		SS	GS	0.9	0.02		
	Small conc of "pot-boilers" on sand ridge. Dimens 26m E/W x 11m N/S. SMR no. 20107							
20	6834 8775		SS	GS	1.1	0.04	7	0.08
	Abundant "pot-boilers" with a few flints on SE side of a sand island. Dimens 26m E/W x 20m N/S. SMR no. 19818/c3							
21	6819 8781	EN	SS	GS	1.0	0.06	121	0.55
	Conc of flint, including frag of leaf arrowhead and possible unfinished arrowhead, and "pot-boilers", the latter more common to S, former to N. On SW edge of sand island. Max dimens 37m NW/SE x 20m NE/SW. SMR no. 19818/c4							
22	6814 8783	EN	SS	GS	0.9	0.02	67	0.51
		Preh					(P) 1	0.00
	Moderate conc of flints, including leaf arrowhead and unfinished arrowhead, with a few "pot-boilers" and one potsherd on sandy island above peat-filled depression. Max dimens 17m NW/SE x 16m NE/SW. SMR no. 5320/c4							
23	6821 8729		SS	GS	0.9	0.03	3	0.03
	Small conc of "pot-boilers" on gravelly sand island. Max dimens 20m diam. SMR no. 14740/c3							
24	6855 8739	?EN	SS	GS	0.9	0.01	29	0.11
	Small conc of flints on W slope of sand island. Max dimens 10m diam. SMR no. 5321/c6							
25	6844 8760		SS	GS	1.0	0.05	1	0.07
	Abundant spread of "pot-boilers" on S side of gravelly sand ridge. Max dimens 25m NE/SW x 24m NW/SE. SMR no. 5321/c7							
26	6850 8762		SS	GS	0.8	0.01	1	0.01
	Small spread of "pot-boilers" on S side of gravelly sand ridge. Max dimens 13m E/W x 12m N/S. SMR no. 5321/c8							

I: D3

HOCKWOLD

No.	Grid.Ref.	Date	Nature	Soil	Height	Area	(F) no	wt
27	6852 8762		SS	GS	0.9	0.05	3	0.02
<p>Sparse to moderate spread of "pot-boilers" and the odd flint. On gravelly sand ridge. Max dimens 35m N/S x 18m E/W. SMR no. 5321/c9</p>								
28	6853 8770	BA	SS	GS	0.9	0.11	13	0.18
<p>Sparse to moderate conc of "pot-boilers" and the odd flint. On gravelly sand ridge. Max dimens 50m NW/SE x 28m NE/SW. SMR no. 5321/c10</p>								
29	6843 8770		SS	GS	1.0	0.01	8	0.06
<p>Small conc of "pot-boilers" on gravelly sand ridge. Max dimens 10m NW/SE x 7m NE/SW. SMR no. 5321/c11</p>								
30	6645 8637	Mes/EN	SS	GS	0.7-1.1	0.90	533	3.89
<p>Large spread of flints with sparse to moderate "pot-boilers" and occ bone frag on N edge of sand island beside Little Ouse roddon. Site divided by narrow peaty channel. Max dimens 252m E/W x 85m N/S. SMR no. 20232</p>								
31	6650 8626	Mes LNEBA	SS	GS	0.6-1.6	1.08	402	2.67
		RB					(P) 1	0.01
<p>Extensive spread of flints including barbed and tanged arrowhead, a sherd of RB pot and "pot-boilers", the latter intermittent. Flint varies in density suggesting amalgamation of several concs. On SW edge of sand island sloping down to peat. Close to Little Ouse roddon. Max dimens 180m NW/SE x 60m NE/SW. SMR no. 20233</p>								
32	6651 8633	Mes	SS	GS	0.8	0.12	131	0.88
<p>Scatter of Mes material on N side of sand island close to, but apparently separate from, HCW 30. Max dimens 43m E/W x 35m N/S. SMR no. 20234</p>								

HOCKWOLD

No.	Grid.Ref.	Date	Nature	Soil	Height	Area	(F) no	wt
33	6661 8621	<b>Mes</b> <b>LNEBA</b>	SS	GS	1.6	0.13	173	1.44
		LNEBA					(P) 11	0.04
		RB					(P) 4	0.01
		Med					(P) 1	0.01

Conc of flints close to top of sand island. A few "pot-boilers", bone frags and sherds of pot, including Bkr and EBA frags, also. Max dimens 57m NW/SE x 30m NE/SW.  
SMR no. 20235/c1

34	6662 8617	<b>EBA</b>	SS	GS	0.8-1.4	0.04	65	0.40
		EBA					(P) 9	0.05
		RB					(P) 3	0.02
		Med					(P) 3	0.02

Slight overlap with HCW 33 but primarily "pot-boilers" at NW end and flint, with a few sherds of pot (the EBA material including a few sherds of Food Vessel) to SE. On SW slope of sand island very close to Little Ouse roddon. Max dimens 38m E/W x 14m N/S.  
SMR no. 20235/c2

35	6677 8667		SS	GS	0.7	0.06	37	0.38
----	-----------	--	----	----	-----	------	----	------

Moderate spread of "pot-boilers" with sparse flint and bone and one sherd. On gravelly sand ridge. Max dimens 28m NE/SW x 26m NW/SE.  
SMR no. 20217/c3

36	6677 8664		SS	GS	0.7	0.01	2	0.01
----	-----------	--	----	----	-----	------	---	------

Small but dense spread of "pot-boilers", but only a couple of flints. On small peninsula of sand just emerging from peat. Max dimens 12m NE/SW x 9m NW/SE.  
SMR no. 20217/c4

37	6681 8669		SS	GS	0.7	0.06	9	0.16
----	-----------	--	----	----	-----	------	---	------

Abundant spread of "pot-boilers" on gravelly sand ridge above peat-filled gully. Max dimens 32m NW/SE x 25m NE/SW.  
SMR no. 20217/c5

38	6684 8666	<b>LNEBA</b>	SS	GS	0.7	0.02	22	0.21
----	-----------	--------------	----	----	-----	------	----	------

Sparse to moderate spread of flints with a few "pot-boilers", also occ frags of bone. On low ridge of gravelly sand spreading onto clayey loam. Max dimens 16m NE/SW x 15m NW/SE.  
SMR no. 20217/c6

## HOCKWOLD

No.	Grid.Ref.	Date	Nature	Soil	Height	Area	(F) no	wt
39	6679 8670	?LNEBA	SS	GS	0.8	0.04	44	0.33
	Sparse to moderate flints and "pot-boilers" on gravelly sand ridge with a few patches of clayey loam. Max dimens 27m NE/SW x 17m NW/SE. SMR no. 20217/c7							
40	6687 8665		SS	GS	0.7	0.12	9	0.40
	Large spread of "pot-boilers" (of varying density) and a few flints on SW side of long sand ridge which also has patches of clayey loam. Max dimens 74m N/S x 20m E/W. SMR no. 20217/c8							
41	6689 8653		SS	GS	0.7	0.02		
	Small spread of "pot-boilers" on sand ridge. Max dimens 17m E/W x 14m N/S. SMR no. 20217/c9							
42	6688 8654		SS	GS/CL	0.7	0.01		
	Small spread of "pot-boilers" on mixed gravelly sand and clayey loam ridge. Definitely separate from HCW 41. Max dimens 12m E/W x 11m N/S. SMR no. 20217/c10							
43	6696 8657		SS	GS/CL	0.7	0.02		
	Small spread of "pot-boilers" and a single flint. On gravelly sand ridge changing to clayey loam in E. Max dimens 17m E/W x 13m N/S. SMR no. 20217/c11							
44	6697 8649		SS	GS	0.6-1.2	0.11		
	Abundant spread of "pot-boilers" ,perhaps forming a slight mound on top of of a sand ridge, which completely surrounds a peat-filled "pool". Max dimens 42m N/S x 34m E/W. SMR no. 20217/c12							
45	6690 8643		SS	GS	0.7-1.2	0.05	3	0.01
	Abundant spread of "pot-boilers" and odd flint above a peat-filled gully. Max dimens 25m NW/SE x 23m NE/SW. SMR no. 20217/c13							
46	6686 8787		SS	GS	0.7	0.11		
	Moderate spread of "pot-boilers" along ridge, marly sand but with a few clayey loam patches. Max dimens 98m N/S x 15m E/W. SMR no. 20224							



## HOCKWOLD

No.	Grid.Ref.	Date	Nature	Soil	Height	Area	(F) no	wt
47	6676 8786		SS	GS	0.8	0.04		
	Moderate to abundant spread of "pot-boilers" on ridge above peat. Max dimens 54m NE/SW x 10m NW/SE. SMR no. 20236							
48	6911 8699	Preh	SS	GS	0.8	0.02	20	0.15
		Bkr					(P) 1	0.00
	Sparse spread of flints and a few "pot-boilers" with one sherd of pot(LNEBA) On S slope of ridge. Max dimens 19m NW/SE x 15m NE/SW. SMR no. 20109/c3							
49	6773 8643		SS	GS	0.8			
	On ridge enough "pot-boilers" to demonstrate a "site" but field conditions, plus the fact that the ridge is only just showing above peat, do not allow extent to be calculated. SMR no. 20229							
50	6775 8640		SS	GS	0.8		2	0.02
	Conc of "pot-boilers" on ridge but, as with HCW 49, field conditions etc do not allow the "site" to be defined. SMR no. 20230							
51	6783 8643		SS	GS	0.8		1	0.01
	Presence of "pot-boilers" indicate "site" of unknown extent. SMR no. 20231							
52	6844 8787	Preh	SS	GS	1.0	0.09	9	0.10
	Moderate spread of flints with sparse "pot-boilers". On SE side of ridge above peat. Max dimens 50m NE/SW x 25m NW/SE. SMR no. 5377/c4							
53	6838 8788		SS	GS	0.9	0.08	5	0.10
	Abundant "pot-boilers" and a few flints on ridge, perhaps partly covered by dyke upcast. Min dimens 62m NE/SW x 16m NW/SE. SMR no. 5377/c5							
54	6819 8803	Preh	SS	GS	0.8	0.06	18	0.23
	Sparse conc of flints and "pot-boilers" on ridge. Max dimens 30m N/S x 25m E/W. SMR no. 5377/c6							

## HOCKWOLD

No.	Grid.Ref.	Date	Nature	Soil	Height	Area	(F) no	wt
55	6823 8788	?LNEBA	SS	GS	0.8	0.13	54	0.57
<p>Conc of sparse flint, including unfinished arrowhead, and sparse, locally moderate "pot-boilers" on ridge. Max dimens 84m E/W x 20m N/S. SMR no. 5377/c7</p>								
56	6837 8785		SS	GS	0.9	0.02		
<p>Small spread of "pot-boilers" on ridge. Dimens 15m diam. SMR no. 5377/c8</p>								
57	6691 8633	?Mes/EN LNEBA	SS	GS	1.2	0.05	58	0.27
<p>Moderate spread of flints and sparse to moderate "pot-boilers" on S slope of island. "Site" may be partly covered by dyke upcast. Max dimens 30m E/W x 20m N/S. SMR no. 20324</p>								
58	6689 8630	?Mes LNEBA	SS	GS	1.0	0.09	68	0.39
<p>Moderate spread of flints with sparse "pot-boilers" becoming common to SW. On S slope of island. Max dimens 37m NE/SW x 31m NW/SE. SMR no. 20325</p>								
59	6692 8629		SS	GS	0.9	0.02		
<p>Moderate spread of "pot-boilers" on S slope of island. Max dimens 19m E/W x 15m N/S. SMR no. 20326</p>								
60	6684 8628		SS	GS	0.7	0.01	6	0.03
<p>Sparse to moderate spread of "pot-boilers" with a few flints on sand island only just clear of peat. Max dimens 16m NW/SE x 10m NE/SW. SMR no. 20327</p>								
61	6684 8620		SS	GS	0.7	0.01	1	0.02
<p>Scatter of "pot-boilers" on ridge just emerging from peat. Max dimens 16mN/S x 8m E/W. SMR no. 20328</p>								
62	6870 8797		SS	GS	1.5	0.03	1	0.04
<p>Sparse scatter of "pot-boilers" and one flint core on W slope of ridge. Max dimens 18m NW/SE x 21m NE/SW. SMR no. 20719</p>								

## HOCKWOLD

No.	Grid.Ref.	Date	Nature	Soil	Height	Area	(F) no	wt
63	6858 8793		SS	GS	1.5	0.01	1	0.01
	Sparse scatter of "pot-boilers" and a couple of flints on side of ridge. Dimens c 11m diam. SMR no. 20719							
64	6852 8796		SS	GS	1.2	0.02	2	0.01
	Sparse scatter of "pot-boilers" and a couple of flints on side of ridge. Max dimens 10m NW/SE x 19m NE/SW. SMR no. 20720							
65	6850 8806		SS	GS	0.9	0.03		
	Sparse scatter of "pot-boilers" on top and sides of small ridge. Max dimens 15m NE/SW x 24m NW/SE. SMR no. 20721							
66	6818 8814		SS	GS	0.9	0.07	3	0.04
			Preh				(P) 1	0.01
	Moderate spread of "pot-boilers", three flints and one sherd of pot(?Bkr), on E side of ridge. Max dimens 31m E/W x 28m N/S. SMR no. 5317/c4							
67	6825 8815		SS	GS	0.6	0.07		
	Abundant "pot-boilers" spread over narrow ridge. Max dimens 30m NW/SE x 31 NE/SW. SMR no. 5317/c5							
68	6812 8810		SS	GS	0.6	0.03		
	Sparse scatter of "pot-boilers" on E side of ridge, partly covered by dyke upcast. Max dimens 30m E/W x 11m N/S. SMR no. 5317/c6							
69	6823 8925		SS	GS	0.9	0.07	3	0.03
	Sparse to moderate conc of "pot-boilers" and odd flint on ridge above peat. Max dimens 70m E/W x 20m N/S. SMR no. 21101							
70	6824 8914		SS	GS	1.1	0.12	4	0.09
	Abundant spread of "pot-boilers" and odd flints along ridge. Max dimens 62m E/W x 30m N/S. SMR no. 21102							

## HOCKWOLD

No.	Grid.Ref.	Date	Nature	Soil	Height	Area	(F) no	wt
71	6818 8844		SS	GS	0.9	0.03	2	0.01
	Sparse conc of "pot-boilers" and occ flint and bone frag. On low sand ridge. Max dimens 27m N/S x 12m E/W. SMR no. 21208							
72	6815 8850		SS	GS	0.8	0.01		
	Moderate conc of "pot-boilers" on ridge just emerging from peat. "Pot-boilers" fade out where sand gives way to loam. Max dimens 25m N/S x 6m E/W. SMR no. 21209							
73	6805 8845		SS	GS	0.8	0.01		
	Sparse spread of "pot-boilers" at end of ridge. Max dimens 10m N/S x 8m E/W. SMR no. 21210							
74	6807 8849		SS	GS	0.9	0.05		
	Sparse, locally moderate spread of "pot-boilers" on ridge; edge of conc coincides with change from sand to loam. Max dimens 46m N/S x 12m E/W. SMR no. 21211							
75	6855 8851		SS	CL	1.2	0.03	21	0.13
	Sparse flint and a few "pot-boilers" on S side of ridge. Min dimens 28m N/S x 13m E/W. SMR no. 14732/c5							
76	6863 8881		SS	CL	1.5	0.17	8	0.06
	Moderate conc of "pot-boilers" and a few flints on side of ridge above peat-filled depression. Max dimens 34m N/S x 55m E/W. SMR no. 14732/c6							
77	6870 8900		SS	CL	1.0	0.09	2	0.02
	Sparse conc of "pot-boilers" and a few flints on fairly level plateau at fen edge. Max dimens 40m NW/SE x 28m NE/SW. SMR no. 14732/c7							
78	6860 8877		SS	CL		0.07	7	0.03
	Moderate conc of "pot-boilers" with the odd flint on side of ridge above a hollow. Max dimens 30m N/S x 29m E/W. SMR no. 14732/c8							

## HOCKWOLD

No.	Grid.Ref.	Date	Nature	Soil	Height	Area	(F) no	wt
79	6892 8815		SS		1.4	0.20	8	0.06
	Sparse to moderate conc of "pot-boilers" and the occ flint. Max dimens 37m NW/SE x 60m NE/SW. SMR no. 22325							
80	6869 8824	<b>LNEBA</b>	SS	GS	1.1	0.03	32	0.21
	Sparse spread of flints (probably of Bkr date) and "pot-boilers" with rare bone frags on N edge of ridge. Max dimens 22m E/W x 18m N/S. SMR no. 5317/c8							
81	6760 8665		SS	GS	0.7	0.04		
	Sparse to moderate conc of "pot-boilers" on top and sides of small ridge. Max dimens 24mN/S x 20m E/W. SMR no. 22318/c2							
82	6791 8656		SS	GS	0.7	0.02		
	Sparse to moderate conc of "pot-boilers" and one flint core on small ridge. Max dimens 18m N/S x 12m E/W. SMR no. 22320							
83	6777 8652		SS	GS	0.7	0.04		
	Moderate conc of "pot-boilers" across ridge but particularly on E side. Max dimens 28m NE/SW x 17m NW/SE. SMR no. 22319							
84	6796 8611	<b>Mes</b>	SS	GS	0.8	0.05	21	0.30
	Sparse spread of flint and "pot-boilers" on island just emerging from peat. Max dimens 30m E/W x 18m N/S. SMR no. 22322							
85	6824 8654		SS	GS	0.7	0.01		
	Sparse to moderate conc of "pot-boilers" on N side of ridge just emerging from peat. Max dimens 15m E/W x 9m N/S. SMR no. 22321/c2							
86	6819 8697		SS	GS	0.8	0.03		
	Sparse to moderate conc of "pot-boilers" on ridge embayment. Max dimens 16m NW/SE x 19m NE/SW. SMR no. 22321/c3							

## HOCKWOLD

No.	Grid.Ref.	Date	Nature	Soil	Height	Area	(F) no	wt
87	6719 8602	LNEBA	SS	S	1.0	0.09	56	0.33
		Sparse to moderate spread of flints (probably of Bkr date) with moderate "pot-boilers" and occ frags of bone. On sandhill close to course of Little Ouse roddon. Max dimens 36m NE/SW x 28m NW/SE. SMR no. 22317						
88	6681 8610	Mes LNEBA	SS	GS	1.6	0.30	193	1.17
		LNEBA					(P) 1	0.00
		On sandy island adjacent to Little Ouse roddon and bisected by field dyke, a sparse to locally moderate spread of flint of Bkr date and "pot-boilers" with a few frags of bone and one of pot. Max dimens 130m E/W x 25m N/S. SMR no. 22315						
89	6828 8889		SS	GS	0.7	0.04		
		Moderate to abundant "pot-boiler" spread on bend in ridge. Max dimens 24m E/W x 22m N/S. SMR no. 20834/c6						
90	6822 8867		SS	GS	0.7	0.02		
		Sparse to moderate conc of "pot-boilers" on edge of ridge. Dimens 14m diam. SMR no. 20834/c7						
91	6836 8882		SS	CL	0.7	0.02		
		Conc of sparse, locally moderate "pot-boilers" on W side of ridge. Max dimens 21m N/S x 10m E/W. SMR no. 20834/c8						
92	6838 8888		SS	GS	0.7	0.03		
		Sparse spread of "pot-boilers" at end of ridge. Max dimens 17m E/W x 19m N/S. SMR no. 20834/c9						
93	6834 8889		SS	GS	0.8	0.03		
		Sparse to moderate "pot-boilers" on N side and top of ridge. Max dimens 18m diam. SMR no. 20834/c10						

## HOCKWOLD

No.	Grid.Ref.	Date	Nature	Soil	Height	Area	(F) no	wt
94	6840 8878		SS	GS	0.7	0.04	2	0.03
	Sparse conc of "pot-boilers" and the odd flint on a sandy patch on a chalky-loam ridge. Max dimens 32m N/S x 15m E/W. SMR no. 20834/c11							
95	6846 8880		SS	CL	0.7	0.07		
	Moderate spread of "pot-boilers" on E side of ridge. Max dimens 28m E/W x 30m N/S. SMR no. 20834/c12							
96	6856 8876	LNEBA	SS	CL	0.8	0.04	23	0.18
		Bkr					(P) 1	0.00
	Sparse conc of flints and "pot-boilers", one piece of bone and one frag of pot(Bkr) on on E side of ridge. Max dimens 32m N/S x 15m E/W. SMR no. 14734/c4							
97	6851 8881	Mes/EN LNEBA	SS	CL	0.9	0.13	75	0.44
		Preh					(P) 1	0.00
	Moderate conc of flint, including unfinished arrowhead, sparse "pot-boilers" and one piece of pot. On adjacent ridge and across intervening peat hollow. Max dimens 42m N/S x 40m E/W. SMR no. 14734/c5							
98	6858 8885	Mes/EN	SS	CL	0.8	0.05	46	0.20
	Sparse to moderate flints and sparse "pot-boilers" on side of ridge and apparently separate from HCW 99. Max dimens 35m NE/SW x 18m NW/SE. SMR no. 14734/c6							
99	6860 8889	EN	SS	CL	0.8	0.06	43	0.25
		EN					(P) 1	0.00
	Sparse flint, including leaf arrowhead, and "pot-boilers" and one sherd of pot on NW side of ridge. Max dimens 42m NW/SE x 18m NE/SW. SMR no. 14734/c7							





HOCKWOLD

No.	Grid.Ref.	Date	Nature	Soil	Height	Area	(F) no	wt
107	6889 8733	EN LNEBA	SS	GS	0.8	0.21	82	0.79
<p>Sparse to moderate conc of flint (including broken barbed and tanged arrowhead and broken flint axe) with sparse "pot-boilers" (except for 22m x 18m patch where abundant on N side) and a few bone frags. Max dimens 75m NW/SE x 30m NE/SW. SMR no. 22523</p>								
108	6840 8842		SS	GS	0.9	0.07	16	0.12
<p>Sparse to moderate conc of "pot-boilers" and a few flints on ridge. Max dimens 32m E/W x 24m N/S. SMR no. 22524</p>								
109	6829 8843		SS	GS	0.7	0.06		
<p>Sparse to moderate conc of "pot-boilers" along edge of ridge. Min dimens 35m NE/SW x 18m NW/SE. SMR no. 22525</p>								
110	6830 8847		SS	CL	0.7	0.06		
<p>Sparse to moderate conc of "pot-boilers" and a couple of flints on both sides of s ridge. Max dimens 24m N/S x 32m E/W. SMR no. 22526</p>								
111	6832 8855		SS	SL		0.03		
<p>Sparse to moderate conc of "pot-boilers" and a couple of flints on side of ridge. Max dimens 24m E/W x 16m N/S. SMR no. 22527</p>								
112	6882 8776		SS	GS	0.9	0.06		
<p>Moderate conc of "pot-boilers" on NW side of ridge. Max dimens 34m N/S x 24m E/W. SMR no. 5450/c4</p>								
113	6880 8935	LNEBA Bkr	SS	SL	2.1	0.08	30	0.20
<p>Sparse conc of flint with a few "pot-boilers" on a gentle slope above a skirtland hollow. Max dimens 46m NE/SW x 20m NW/SE. SMR no. 5160/c10</p>								

I: EI

HOCKWOLD

No.	Grid.Ref.	Date	Nature	Soil	Height	Area	(F) no	wt
-----	-----------	------	--------	------	--------	------	--------	----

U1	6875 8885	RB	EXC	-	-	-	-	-
----	-----------	----	-----	---	---	---	---	---

Complex of ditches, floors and timber-built structures excavated by F. Curtis and others in 1962 and later. (Gregory 1982,369) Interpreted as a Roman temple in a rectangular enclosure, in use in the late C3 and early C4, although finds date from the late C1 to the late C4.  
SMR no. 5367

A1	6870 8832	RB	CF	-	-	-	-	-
----	-----------	----	----	---	---	---	---	---

Hoard of early Roman silver wine cups found in peat during a Frank Curtis excavation. (see Johns 1986)  
SMR no. 5395

I: E2

METHWOLD

No.	Grid.Ref.	Date	Nature	Soil	Height	Area	(F) no	wt
1	6926 9597	Preh	SS	ChL	1.8	0.07	45	0.44
<p>Sparse spread of flints, including axe frag, and "pot-boilers", incorporating two small concs of latter, and occ bone frags. On ridge above peat. Max dimens 57m NW/SE x 15m NE/SW. SMR no. 20345/c8</p>								
2	6932 9596	LN ?Mes	SS	ChL	1.5	0.05	62	0.66
<p>Moderate spread of flints, including oblique arrowhead, while "pot-boilers" sparse. On side of ridge. Max dimens 42m N/S x 15m E/W. SMR no. 20345/c9</p>								
3	6937 9597	LNEBA	SS	ChL	1.5	0.02	53	0.49
<p>Sparse to moderate spread of flint and "pot-boilers" with few frags of bone. On NE edge of ridge spreading down to peat. Max dimens 22m N/S x 12m E/W. SMR no. 20345/c10</p>								
4	6936 9591		SS	ChL	1.5	0.12	14	0.18
<p>Moderate, locally abundant "pot-boilers" with a few flints and bone frags across two ridges and the intervening peat. Max dimens 79m E/W x 24m N/S. SMR no. 20345/c11</p>								
5	6943 9591	??LNEBA	SS	ChL	1.5	0.01	24	0.22
<p>Small sparse spread of flint and "pot-boilers" with one bone frag on edge of ridge. Max dimens 15m NW/SE x 10m NE/SW. SMR no. 20345/c12</p>								
6	6507 9657	EN LN	SS	S	1.0	0.21	51	0.23
		EN LN					(P) 33	0.15
<p>Spread of pot (Neo Bowl and Peterborough Ware), flints and bone, sparse but even, over gentle E slope of island. Max dimens 59m E/W x 45m N/S. SMR no. 20347/c2</p>								

METHWOLD

No.	Grid.Ref.	Date	Nature	Soil	Height	Area	(F) no	wt
7	6503 9668	Preh	SS	S	0.8	0.03	8	0.06
		EN Bkr					(P) 17	0.09
<p>Small spread of flint, bone and pot on E side of island. Max dimens 21m E/W x 17m N/S. SMR no. 20346/c2</p>								
8	6958 9385	Preh	SS	ChL	1.1	0.04	26	0.12
<p>Moderate spread of flints (incl. some Meso blades) on ridge just emerging from peat. Dimens c20m diam. SMR no. 20281/c2</p>								
9	6961 9383	Preh	SS	ChL	1.7	0.05	41	0.25
<p>Sparse to moderate scatter of flints, including unfinished arrowhead, with occ bone frag and "pot-boiler" on NW side of ridge. Max dimens 30m NE/SW x 20m NW/SE. SMR no. 20281/c3</p>								
10	6963 9387	Mes/EN	SS	ChL	1.1	0.04	53	0.22
<p>Moderate scatter of worked flints and "pot-boilers" on curving ridge above peat. Max dimens 45m NE/SW x 10m NW/SE. SMR no. 20281/c4</p>								
11	6967 9392		SS	ChL	0.9	0.02	3	0.01
<p>Sparse to moderate spread of "pot-boilers" with occ flint on small ridge. Max dimens c15m diam. SMR no. 20281/c5</p>								
12	6963 9393	Preh	SS	ChL	0.8	0.02	34	0.20
<p>Moderate scatter of flints with occ "pot-boiler" on ridge just emerging from peat. Max dimens 30m NE/SW x 10m NW/SE. SMR no. 20281/c6</p>								
13	6970 9397	Preh	SS	ChL	0.9	0.05	43	0.21
<p>Sparse to moderate scatter of flints with a few "pot-boilers" on ridge just above peat. Min dimens 40m N/S x 15m E/W. SMR no. 20281/c7</p>								
14	6974 9392	?EN	SS	ChL	2.1	0.11	59	0.41
<p>Sparse to moderate scatter of flints and odd "pot-boilers" quite widely spread over ridge. Min dimens 35m NW/SE x 40m NE/SW. SMR no. 20281/c8</p>								

I: E4

METHWOLD

No.	Grid.Ref.	Date	Nature	Soil	Height	Area	(F) no	wt
15	6975 9397	Preh	SS	ChL	1.4	0.05	40	0.33
<p>Sparse to moderate scatter of flints, including backed knife, on ridge. Max dimens 30m NE/SW x 20m NW/SE. SMR no. 20281/c9</p>								
16	6973 9403		SS	ChL	0.9	0.04		
<p>Moderate spread of "pot-boilers" on island emerging from peat. Max dimens 30m NE/SW x 15m NW/SE. SMR no. 20281/c10</p>								
17	6977 9402	Preh	SS	ChL	0.9	0.02	41	0.33
<p>Sparse scatter of flints, mainly on W tip of ridge. Max dimens 20m E/W x 15m N/S. SMR no. 20281/c11</p>								
18	6981 9400		SS	ChL	1.1	0.04	12	0.07
<p>Moderate to abundant spread of "pot-boilers" with occ flint. On NW slope of island down to peat. Max dimens 35m NE/SW x 15m NW/SE. SMR no. 20281/c12</p>								
19	6984 9403	Preh	SS	ChL	1.4	0.02	25	0.10
<p>Sparse spread of flint, including awl, with occ "pot-boilers" on ridge just above peat. Max dimens 20m NE/SW x 15m NW/SE. SMR no. 20281/c13</p>								
20	6987 9397	?LNEBA	SS	ChL	1.9	0.08	58	0.40
<p>Sparse scatter of large flints with rare "pot-boilers". Max dimens 40m NE/SW x 25m NW/SE. SMR no. 20281/c14</p>								
21	6880 9659	Mes	SS	GS	3.2	0.09	40	0.30
<p>Moderate scatter of flints on N side of Catsholm ridge. Max dimens 40m NW/SE x 18m NE/SW. SMR no. 20991/c4</p>								
22	6876 9664	Preh	SS	GS	2.7	0.07	68	0.70
<p>Sparse to moderate flint and sparse "pot-boilers"; smaller flakes and blades on N edge of conc could suggest two overlapping areas. On N side of Catsholm ridge. Max dimens 49m N/S x 17m E/W. SMR no. 20991/c5</p>								

I: E5

## METHWOLD

No.	Grid.Ref.	Date	Nature	Soil	Height	Area	(F) no	wt
23	6887 9656		SS	GS	2.4	0.12	2	0.02
	Sparse to moderate conc of "pot-boilers" and a few flints. On flattish part of Catsholm ridge. Max dimens 47m E/W x 32m N/S. SMR no. 20991/c6							
24	6878 9667	Preh	SS	GS	2.1	0.05	36	0.22
	Sparse to moderate spread of flint (incl. ?LNEBA piercer) with sparse "pot-boilers" on edge of ridge with peat depression to N. Max dimens 31m E/W x 21m N/S. SMR no. 20991/c7							
25	6885 9667	<b>Mes</b>	SS	GS	2.4	0.11	98	0.65
	Moderate spread of flint with sparse to moderate "pot-boilers" on gentle N slope of ridge. Max dimens 82m E/W x 20m N/S. SMR no. 20991/c8							
26	6898 9662	<b>Mes</b>	SS	GS	2.4	0.07	28	0.25
	Sparse to moderate conc of flint and "pot-boilers" on N edge of ridge. Max dimens 35m E/W x 25m N/S. SMR no. 20991/c9							
27	7052 9454		SS	ChL	1.2	0.12	3	0.05
	Moderate to abundant spread of "pot-boilers" with very sparse flint and bone. On side of pronounced ridge above peat-filled hollow. Max dimens 57m NE/SW x 27m NW/SE. SMR no. 21036/c4							
28	7049 9450		SS	ChL	1.2	0.03		
	Moderate but small spread of "pot-boilers" with a couple of bone frags on edge of ridge above peat-filled hollow. Max dimens 15m N/S x 24m E/W. SMR no. 21036/c5							
29	7047 9453	<b>LN</b> Mes	SS	GS	1.7	0.16	98	1.09
	Even but sparse spread of flints, including one chisel and two oblique arrowheads, with a few bone and "pot-boiler" frags on fairly flat ridge with slope to peat-filled hollow on E. Max dimens 46m NE/SW x 43m NW/SE. SMR no. 21036/c6							

## METHWOLD

No.	Grid.Ref.	Date	Nature	Soil	Height	Area	(F) no	wt
30	7032 9444	?LNEBA	SS	GS	1.6	0.03	20	0.19
	Sparse spread of flints with a few bone and "pot-boilers", curving around edge of peat-filled hollow. Max dimens 16m NW/SE x 14m NE/SW. SMR no. 21036/c7							
31	7029 9440	?LNEBA	SS	GS	1.6	0.06	46	0.43
	Sparse spread of flints (incl. some ?Mes cores) with couple of bone frags and rare "pot-boilers" over flat sandhill with gentle slope to SE. Max dimens 39m NW/SE x 20m NE/SW. SMR no. 21036/c8							
32	7037 9451	Mes LNEBA	SS	GS	1.7	0.11	91	0.88
	Sparse to moderate conc of flints with occ "pot-boilers" and bone frags. On flat sandhill with ridge to W. Max dimens 39m NE/SW x 36m NW/SE. SMR no. 21036/c9							
33	7027 9450		SS	GS	1.1	0.08	19	0.27
	Abundant spread of "pot-boilers" with a few flints mainly at S end of "site". On ridge surrounded by peat and some disturbance due to infilled dyke. Max dimens 52m N/S x 21m E/W. SMR no. 21036/c10							
34	6559 9627		SS	S	1.1	0.02	17	0.09
	Sparse but even scatter of "pot-boilers" and flints on small island just emerging from peat. Max dimens c15m diam. SMR no. 21143							
35	6495 9454	Mes/EN	SS	CL	0.7-1.4		110	0.56
	Moderate conc of flints and sparse "pot-boilers" across full width of small ridge projecting from island. SMR no. 21146							
36	6425 9417	?EN	SS	S	1.8	0.14	54	0.34
		EN LNEBA					(P) 10	0.05
	Sparse conc of flint, including frag of backed knife, with a very few "pot-boilers" and potsherds on NW side of Stubb's Hill. Max dimens 62m NE/SW x 30m NW/SE. SMR no. 21144							

## METHWOLD

No.	Grid.Ref.	Date	Nature	Soil	Height	Area	(F) no	wt
37	6407 9412	<b>Mes</b> <b>EN</b>	SS	S	0.7	0.04	32	0.29
			Sparse scatter of flints and "pot-boilers" on area of grey sand mixed with peat. Max dimens 42m N/S x 15m E/W. SMR no. 21145					
38	6897 9307	EN LN	SS	ChL	1.1	0.03	51	0.25
			Sparse to moderate conc of flint, including frags of leaf and chisel arrowhead, with rare "pot-boilers" and bone frags. On ridge just emerging from peat. Max dimens 23m N/S x 15m E/W. SMR no. 5235/c8					
39	6898 9314	<b>LNEBA</b> ?Bkr BA  LN	SS	ChL	1.1	0.04	66	0.34
							(P) 1	0.02
			Sparse to moderate spread of flint and bone, with one pot frag (Fengate Ware or BA), on ridge just emerging from peat. Max dimens 35m N/S x 15m E/W. SMR no. 5235/c9					
40	6895 9319		SS	ChL	0.9	0.01	13	0.10
			Sparse to moderate "pot-boilers" and flint on W side of ridge. Max dimens 15m N/S x 12m E/W. SMR no. 5325/c10					
41	6910 9316		SS	ChL	1.8	0.05	5	0.04
			Moderate conc of "pot-boilers" with occ flint on S side of ridge above slight hollow. Max dimens 29m E/W x 24m N/S. SMR no. 5235/c11					
42	6916 9309		SS	ChL	2.3	0.03		
			Sparse to moderate spread of "pot-boilers" on flattish ridge. Max dimens 22m N/S x 19m E/W. SMR no. 5235/c12					
43	6955 9380	<b>LNEBA</b>  ?Bkr	SS	ChL	1.1	0.05	119	1.19
							(P) 1	0.01
			Moderate spread of flint with some bone and more rare "pot-boilers" and one pot frag (possibly Bkr), on ridge above peat. Max dimens 29m NE/SW x 20m NW/SE. SMR no. 21138					



## METHWOLD

No.	Grid.Ref.	Date	Nature	Soil	Height	Area	(F) no	wt
44	6950 9377	LNEBA	SS	ChL	1.2	0.08	41	0.49
							(P) 1	0.01
	Sparse to moderate bone and flint with moderate conc of "pot-boilers" on E side of ridge. Max dimens 36m NE/SW x 28m NW/SE. SMR no. 21139							
45	6953 9374		SS	ChL	1.4	0.07	4	0.09
	Moderate to abundant conc of "pot-boilers" and with a few flints and bone frags. On small hump partially surrounded by peat. Max dimens 31m NE/SW x 24m NW/SE. SMR no. 21191							
46	6945 9374	?LNEBA	SS	ChL	1.1	0.08	75	0.93
							(P) 2	0.01
	Sparse spread of flints and a few "pot-boilers", pot and bone frags. On gently sloping ridge above peat. Max dimens 36m NE/SW x 26m NW/SE. SMR no. 21192							
47	6943 9369	Preh	SS	ChL	1.1	0.03	32	0.22
	Sparse conc of flints with rare "pot-boilers" and bone frags on edge of low ridge. Max dimens 25m E/W x 15m N/S. SMR no. 21193							
48	6940 9363	LN	SS	ChL	1.2	0.06	37	0.30
	Even spread of large flints with odd bone frags in a slight depression between ridges. Max dimens 28m NW/SE x 25m NE/SW. SMR no. 21194							
49	6931 9359	Preh	SS	ChL	1.2	0.06	16	0.16
		EBA					(P) 2	0.02
	Sparse to moderate "pot-boilers" with rare pot (possibly Food Vessel), flint and bone frags mainly on S side of ridge. Max dimens 26m N/S x 28m E/W. SMR no. 5245/c10							
50	6931 9354		SS	ChL	1.4	0.04	8	0.05
	Moderate conc of "pot-boilers" with occ flint and bone frags. On ridge with hollow to S over which "pot-boilers" spread. Max dimens 37m NE/SW x 18m NW/SE. SMR no. 5245/c11							

## METHWOLD

No.	Grid.Ref.	Date	Nature	Soil	Height	Area	(F) no	wt
51	6926 9353	?EN	SS	ChL	1.3	0.05	49	0.33
							(P) 1	0.01
Sparse to moderate conc of flint with rare bone frags, pot and "pot-boilers". On slope of ridge curving around peat hollow. Max dimens 26m N/S x 24m E/W.								
52	6921 9352	LNEBA	SS	ChL	1.0	0.09	80	0.60
							(P) 1	0.01
Sparse to moderate conc of flint, including ?leaf arrowhead frag, with a few bone frags and one potsherd. On low ridge above peat. Max dimens 48m N/S x 25m E/W. SMR no. 5245/c13								
53	6918 9344		SS	ChL	1.1	0.07	10	0.15
Moderate to abundant "pot-boilers" with a few flint and bone frags around edge, on steep-sided and curving ridge. Max dimens 46m E/W x 20m N/S. SMR no. 5245/c14								
54	6910 9338		SS	ChL	1.0	0.03	10	0.04
Sparse to moderate conc of "pot-boilers" with very sparse flints. A narrow strip of material on a flat plateau. Max dimens 24m N/S x 14m E/W. SMR no. 5245/c15								
55	7148 9516	IA RB	SS	C	2.5	0.12	(P) 25 (P) 36	0.19 0.22
Sparse to moderate spread of pot and burnt and broken pebbles, a few bone frags and occ flints. Soil stained and some gravel included. Max dimens 37m N/S x 35m E/W. SMR no. 21216								
56	7144 9511	Med IA RB	SS	C	2.9	0.09	(P) 36 (P) 11 (P) 1	0.19 0.07 0.01
Sparse spread of pot, a few pebbles and bone frags. Soil discoloured and some gravel mixed in. Max dimens 41m N/S x 24m E/W. SMR no. 21217								

METHWOLD

No.	Grid.Ref.	Date	Nature	Soil	Height	Area	(F) no	wt
57	6913 9307	Mes	SS	ChL	1.9	0.11	60	0.38
							(P) 1	0.01
<p>Sparse spread of flints and rare bone, pot and "pot-boiler" frags on gentle W slope. Max dimens 47m NW/SE x 30m NE/SW. SMR no. 5235/c17</p>								
58	6902 9307		LNEBA	SS	ChL	1.4	0.04	46
			LNEBA				(P) 3	0.01
<p>Sparse conc of flint and rare pot (incl. Bkr and indeterminate LNEBA), bone frags and "pot-boilers". On side of ridge above peat-filled hollow. Max dimens 24m N/S x 20m E/W. SMR no. 5235/c18</p>								
59	6902 9301	Preh	SS	ChL	1.2	0.05	59	0.27
<p>Sparse to moderate spread of flints with a few bone frags on bend in ridge. Max dimens 34m NE/SW x 19m NW/SE. SMR no. 5235/c19</p>								
60	7200 9558		SS	ChL	1.2	0.16		
<p>Sparse to moderate conc of "pot-boilers" along ridge. A couple of flints probably unassociated. Max dimens 71m E/W x 25m N/S. SMR no. 23045/c2</p>								
61	7189 9570	Preh	SS	ChL	1.8	0.03	14	0.06
			EN LNEBA				(P) 4	0.02
<p>Sparse spread of flints and a few "pot-boiler", pot and bone frags on side of ridge above peat-filled depression. Max dimens c22m NW/SE x 15m NE/SW. SMR no. 23045/c3</p>								
62	7187 9566		SS	ChL	1.5	0.12		
<p>Even and moderate spread of "pot-boilers" on ridge; only one flint recorded. Max dimens 40m E/W x 35m N/S. SMR no. 23045/c4</p>								
63	7180 9575		SS	SL	2.4	0.05		
<p>Small, sparse conc of "pot-boilers" with occ flint on edge of peat-filled hollow. Max dimens 28m E/W x 21m N/S. SMR no. 23045/c5</p>								

## METHWOLD

No.	Grid.Ref.	Date	Nature	Soil	Height	Area	(F) no	wt
64	7186 9563		SS	ChL	1.2	0.02		
	Sparse conc of "pot-boilers" on small ridge. Max dimens 15m diam. SMR no. 23045/c6							
65	6962 9651		SS	G	1.4	0.01		
	Sparse conc of "pot-boilers" on edge of island. Max dimens 16m E/W x 10m N/S. SMR no. 23135							
66	6981 9651		SS	G	1.6	0.05	3	0.03
	Moderate conc of "pot-boilers" with a couple of flints on edge of ridge. Max dimens 33m x 17m. SMR no. 23136							
67	7158 9572	Preh	SS	G	2.0	0.05	39	0.24
		EN					(P) 4	0.01
	Two small, adjacent concs of flint with a few "pot-boilers" and pot frags (EN) on side of ridge. Max dimens 30m x 15m and 9m x 15m. SMR no. 23045/c8c9							
68	7171 9568		SS	SL	1.4	0.04		
	Moderate conc of "pot-boilers" and a few flints on ridge above peat. Max dimens 23m E/W x 18m N/S. SMR no. 23045/c10							
69	7155 9567	EN LNEBA	SS	SL	1.4	0.9	91	0.63
		EN LNEBA					(P) 11	0.04
	Moderate conc of flints, including leaf arrowhead, with a few potsherds (mainly LNEBA) and abundant "pot-boilers" at both ends of spread. Max dimens c35m NE/SW x 30m NW/SE. SMR no. 23045/c11							
70	7168 9564	LNEBA	SS	G	1.7	0.12	35	0.22
							(P) 1	0.00
	Sparse to moderate conc of flints, including oblique arrowhead, sparse "pot-boilers" and a single sherd of pot on ridge above peat. Max dimens 40m NE/SW x 34m NW/SE. SMR no. 23045/c12							

METHWOLD

No.	Grid.Ref.	Date	Nature	Soil	Height	Area	(F) no	wt
71	7076 9474		SS	ChL	1.8	0.15	6	0.03
<p>Sparse to moderate conc of "pot-boilers" and a few flints on peat-covered ridge above peat-filled hollow. Max dimens 55m N/S x 30m E/W SMR no. 23117/c2</p>								
72	7069 9470	?EN	SS	ChL	1,4	0.12	52	0.21
<p>Sparse spread of flints and "pot-boilers" on peat-covered ridge. Max dimens 45m NE/SW x 30m NW/SE. SMR no. 23117/c3</p>								
73	7068 9458		SS	ChL	2.0	0.03		
<p>Sparse spread of "pot-boilers" and a couple of stray flints on side of ridge above peat-filled hollow. Max dimens 18m NE/SW x 16m NW/SE. SMR no. 23118</p>								
74	7183 9626	Preh	SS	G	3.7	0.06	25	0.14
<p>Sparse conc of flints and a few "pot-boilers" on spur jutting out into peat-filled hollow. Max dimens c28m N/S x 25m E/W. SMR no. 23125/c2</p>								
75	7233 9667		SS	ChL	3.1	0.07		
<p>Moderate conc of "pot-boilers" on edge of peat-filled hollow. Max dimens 31m N/S x 26m E/W. SMR no. 23124/c2</p>								
76	7244 9657		SS	ChL	3.4	0.03	4	0.04
<p>Sparse conc of "pot-boilers" and a few flints on loam ridge above hollow. Max dimens 22m NE/SW x 15m NW/SE. SMR no. 23124/c3</p>								
77	7236 9557		SS	SL	3.7	0.09	7	0.10
<p>Sparse to moderate spread of "pot-boilers" and a few flints on edge of peat depression. Max dimens 35m N/S x 30m E/W. SMR no. 23119/c2</p>								
78	7251 9560	Preh	SS	SL	5.2	0.18	31	0.26
<p>Sparse conc of flints and a few "pot-boilers" spread over N facing slope with some flints more widely spaced beyond. Max dimens 69m N/S x 30m E/W. SMR no. 23119/c3</p>								

METHWOLD

No.	Grid.Ref.	Date	Nature	Soil	Height	Area	(F) no	wt
79	7033 9627		SS	ChL	2.4	0.07		
<p>Sparse conc of "pot-boilers" on edge of ridge with another smaller, sparser spread to S. Max dimens of main spread 32m E/W x 24m N/S. SMR no. 23137/c2</p>								
80	7161 9537	Preh	SS	ChL	1.6	0.05	(F) 26	0.19
								(P) 1 0.01
<p>Sparse to moderate conc of flint, sparse "pot-boilers" and one sherd of pot. On a low island of mineral soil, just emerging from peat. Max dimens 25m E/W x 22m N/S. SMR no. 22051/c5</p>								
81	7140 9552		SS	ChL	1.2	0.03	2	0.01
<p>Moderate to abundant spread of "pot-boilers" with a couple of (?unassociated) flints. Covers most of a small ridge and may run under a modern track. Min dimens 19m E/W x 16m N/S. SMR no. 22051/c6</p>								
82	7226 9662		SS	ChL	4.6	0.13		
<p>Sparse, locally moderate "pot-boilers" on a ridge above an irregular hollow. Max dimens 47m NE/SW x 31m NW/SE. SMR no. 19656/c3</p>								
83	7190 9643	Preh	SS	GL	4.2	0.04	14	0.16
<p>Sparse conc of flints and "pot-boilers", the latter more restricted in area. On gentle S-facing sloper above valley. Min dimens 32m NW/SE x &gt;15m NE/SW. SMR no. 23212/c8</p>								
84	7211 9635		SS	GL	4.0	0.05		
<p>Sparse conc of "pot-boilers" on gentle E-facing slope. Max dimens 24m NW/SE x 23m NE/SW. SMR no. 23212/c4</p>								
85	7206 9636	Preh	SS	SL	5.2	0.06	18	0.18
								(P) 1 0.00
<p>Sparse conc of flint and "pot-boilers" and one sherd of pot on gentle S-facing slope above valley. Max dimens 28m NW/SE x 23m NE/SW. SMR no. 23212/c5</p>								

METHWOLD

No.	Grid.Ref.	Date	Nature	Soil	Height	Area	(F) no	wt
86	7196 9632		SS	SL	4.9	0.02		
<p>Sparse conc of "pot-boilers" on gentle S-facing slope above valley. Max dimens 18m NE/SW x 13m NW/SE. SMR no. 23212/c6</p>								
87	7203 9627		SS	StL	4.0	0.02		
<p>Sparse, locally moderate, "pot-boilers" on virtually flat tract of land in valley bottom. Max dimens 18m NW/SE x 12m NE/SW. SMR no. 23212/c7</p>								
88	7220 9564		SS	GL	2.7	0.02		
<p>Small, sparse conc of "pot-boilers" on gentle slope. Max dimens 13m E/W x 12m N/S. SMR no. 23213/c2</p>								
89	7047 9548		SS	P	<0.6	0.04		
<p>Sparse to moderate conc of "pot-boilers" beside dyke. No obvious mineral soil and material must be derived from a buried site. Dimens 29m NE/SW x 17m NW/SE. (Size of site owes more to cultivation than original deposition) SMR no. 23215</p>								
90	7096 9500	Preh	SS	ChL	1.2	0.02	15	0.10
<p>Sparse conc of flints and "pot-boilers" on ridge adjacent to upland slope. Min dimens 16m NE/SW x 11m NW/SE. SMR no. 23226/c2</p>								
91	7089 9498	?LNEBA	SS	ChL	1.6	0.04	28	0.28
<p>Sparse flint and sparse to moderate "pot-boilers" on E side of ridge separated from upland by peat. Flints and "pot-boilers" not necessarily associated. Max dimens 32m N/S x 15m E/W. SMR no. 23226/c3</p>								
92	7091 9502		SS	ChL	1.2	0.04	6	0.02
<p>Sparse to moderate conc of "pot-boilers" with odd flints that may be part of general background scatter. On side of small island beyond upland edge. Max dimens 27m NE/SW x 15m NW/SE. SMR no. 23226/c4</p>								
93	7092 9505	Preh	SS	ChL	1.1	0.03	25	0.18
<p>Sparse spread of flints with occ "pot-boilers" on ridge running out from upland edge. Max dimens 30m E/W x 13m N/S. SMR no. 23226/c5</p>								

I: FI

NORTHWOLD

No. Grid Ref. Date Nature Soil Height Area (F) no wt

METHWOLD

No.	Grid.Ref.	Date	Nature	Soil	Height	Area	(F) no	wt	
94	7087 9502	Preh	SS	ChL	1.2	0.06	36	0.24	
<p>Sparse flint and locally sparse to moderate "pot-boilers" on curving mineral-soil ridge. Max dimens 28m NW/SE x 25 NE/SW. SMR no. 23226/c6</p>									
95	7090 9507		SS	?ChL	1.6	0.10			
<p>Moderate to abundant conc of "pot-boilers", even perhaps part of a "pot-boiler" mound. Close to, but not on, a visible mineral-soil ridge. Max dimens 40m N/S x 28m E/W. SMR no. 23226/c7</p>									
96	7080 9500		SS	ChL	1.1	0.02			
<p>Moderate conc of "pot-boilers" on low island, just beyond end of ridge. Max dimens 17m NW/SE x 15m NE/SW. SMR no. 23226/c8</p>									
97	7010 9443		SS		0.6-1.6	0.10	11	0.06	
<p>Abundant "pot-boilers" but sparse flint. May be a "pot-boiler" mound rising above buried ridge. Partly covered by trackway. Dimens 65m NE/SW x &gt;17m NW/SE. SMR no. 23227</p>									
98	7030 9463	Preh	SS	SL	0.7	0.05	34	0.28	
<p>Sparse to moderate spread of flint on low ridge projecting into peat. Max dimens 31m E/W x 19m N/S. SMR no. 21036/c3</p>									
99	6984 9408		SS	SL	0.8	0.10			
<p>Abundant spread of "pot-boilers" around peat-filled hollow; overlaps with MTW 100. Max dimens 36m NW/SE x 32m NE/SW. SMR no. 23228/c4</p>									
100	6986 9409	Preh	SS	SL	0.8	0.06	42	0.35	
<p>Sparse spread of flint and a few bone frags on NW side of ridge. Overlapping, but extending beyond MTW 99. Max dimens 40m E/W x 18m N/S. SMR no. 23228/c5</p>									
101	6983 9413	?EN	SS	GL	0.8	0.03	29	0.09	
								(P) 3	0.01
<p>Sparse conc of flint and several sherds of pot on low ridge just emerging from peat. Max dimens c20m diam. SMR no. 23228/c6</p>									

I: F2

NORTHWOLD



METHWOLD

No.	Grid.Ref.	Date	Nature	Soil	Height	Area	(F) no	wt
102	6987 9412		SS	ChL	0.9	0.03	7	0.05
	Sparse to moderate "pot-boilers" with a few (?unassociated) flints. On mineral soil ridge. Max dimens 18m NE/SW x 17m NW/SE. SMR no. 23228/c7							
103	6991 9413		SS	ChL	1.0	0.05	5	0.13
	Moderate to abundant conc of "pot-boilers" and a few flints at end of low ridge. Max dimens 30m NE/SW x 18m NW/SE. SMR no. 23228/c8							
104	6990 9415	Preh	SS	ChL	0.7	0.02	75	0.22
	Moderate conc of flints on small island of mineral soil, barely visible above peat. Max dimens 15m NW/SE x 12m NE/SW. SMR no. 23228/c9							
105	6999 9423		SS	ChL	0.8	0.02	2	0.01
	Sparse conc of "pot-boilers" and a couple of flints on a ridge just emerging from peat. Max dimens 15m NE/SW x 12m NW/SE. SMR no. 23228/c10							
106	6648 9688		SS	CL	0.6	0.02		
	Sparse spread of "pot-boilers" on edge of island and close to ancient course of River Wissey. Max dimens 19m E/W x 13m N/S. SMR no. 23219/c2							
107	7040 9572	Preh	SS	GL	2.0	0.05	18	0.11
	Sparse spread of flint and odd "pot-boilers" frags on S edge of ridge. Max dimens 24m NE/SW x 22m NW/SE. SMR no. 23229							
108	7032 9573		SS	GL	1.1	0.12		
	Moderate, locally abundant, spread of "pot-boilers" spreading over full width of low ridge running out from Catsholm ridge. Max dimens 42m N/S x 33m E/W. SMR no. 23230							
109	7049 9559		SS	GL	1.0	0.08		
	Moderate spread of "pot-boilers" on S slope of main ridge. Max dimens 37m E/W x 24m N/S. SMR no. 4742/c3							

I: F3

NORTHWOLD

METHWOLD

No.	Grid.Ref.	Date	Nature	Soil	Height	Area	(F) no	wt
110	6981 9586	LNEBA	SS	ChL	1.6	0.12	22	0.08
<p>Even spread of flint, including frag of oblique arrowhead, and "pot-boilers" over gentle S-facing slope of main ridge. Max dimens 51m E/W x 26m NW/SE. SMR no. 23236</p>								
111	6975 9596		SS	ChL	1.9	0.05	8	0.04
<p>Sparse spread of "pot-boilers" with just the odd flint on edge of spread. On S side of main Catsholm ridge. Max dimens 24m NW/SE x 21 NE/SW. SMR no. 23237</p>								
112	7230 9512	IA Preh	SS	C	5.2	0.06	(P) 114 21	0.57 0.17
<p>Moderate spread of pot with sparse bone and burnt pebbles and a few worked flints, set in patches of grey ashy soil with many small frags of gravel. On N-facing slope with small inlet to E. Max dimens 29m E/W x 24m N/S. SMR no. 23385/c2</p>								
113	7045 9417	IA Preh	SS	C	4.6	0.1	(P) 65 11	0.36 0.09
<p>Sparse spread of pot with a few burnt pebbles and a few (?unassociated) flint flakes. Part disguised by track. On gentle slope from chalk plateau just above fen. Min dimens 55m NE/SW x 21m NW/SE. SMR no. 4848/c3</p>								
114	7176 9473	RB	SS	C	17.7	0.07	(P) 32	0.28
<p>Sparse spread of RB pot (C4), a few bone and oyster shell frags and a little IA pot. On upper edge of valley. Min dimens 47m E/W x &gt;16m N/S. SMR no. 22364/c5</p>								
115	7173 9494	RB	SS	C	9.1	1.00	(P) 217	2.04
<p>General spread of RB pot lying diagonally across upper valley side. Also, a few frags of bone and shell, one rotary quern frag, very little tile. Max dimens 190m NE/SW x 60m NW/SE. SMR no. 22364/c6;22053/c3</p>								
116	7204 9512		SS	C	4.3	0.05		
<p>Sparse spread of "pot-boilers" at base of valley slope but away from present peat levels. Max dimens 28m E/W x 19m N/S. SMR no. 22364/c7</p>								

I: F4

NORTHWOLD

METHWOLD

No.	Grid.Ref.	Date	Nature	Soil	Height	Area	(F) no	wt
117	6430 9724		SS	S	0.7	0.08	3	0.04
<p>Sparse "pot-boilers" with a couple of flints. On low sand island just emerging from peat. Max dimens 48m N/S x 18m E/W. SMR no. 23370</p>								
118	9053 9448	Preh	SS	ChL	1.0	0.03	25	0.11
<p>Sparse spread of flint and a few "pot-boilers" on a low ridge on the skirtland. Max dimens 19m NE/SW x 16m NW/SE. SMR no. 4849/c3</p>								
119	7021 9420		SS	ChL	1.8	0.04		
<p>Sparse to moderate spread of "pot-boilers". At base of slope running up to chalk upland. Max dimens 23m NE/SW x 18m NW/SE. SMR no. 23663/c2</p>								
120	6994 9405	Preh	SS	SL	1.0	0.08	41	0.15
<p>Sparse to moderate spread of flint and a few "pot-boilers" on a gentle slope above hollow. Max dimens 30m NE/SW x 28m NW/SE. SMR no. 23228/c1</p>								
121	7005 9416		SS	ChL	1.0	0.05	3	0.03
<p>Moderate conc of "pot-boilers" with a few flints on edge of ridge above peat hollow. Max dimens 26m NE/SW x 21m NW/SE. SMR no. 23663/c3</p>								
122	7016 9423	?LN	SS	SL	1.5	0.09	53	0.45
<p>Sparse to moderate conc of flint with just a few "pot-boilers" spread evenly across slope above peat. Max dimens 38m NE/SW x 25m NW/SE. SMR no. 23663/c4</p>								
123	7032 9596	Med	SS	SL	4.6	0.05	(P) 21	0.11
<p>Site of Priory of St Mary and St Giles, Slevesholm, a Cluniac cell of Castle Acre founded c1140 and dissolved 1537 (Knowles and Hadcock 1971,100). On surface a spread of med pot(C14-C15), a few shells and bone frags - on S and W sides of a slight rise in corner of field. Dimens c 30m N/S x 20m E/W. SMR no. 4792/c2</p>								

I: F5

METHWOLD

No.	Grid.Ref.	Date	Nature	Soil	Height	Area	(F) no	wt
124	7016 9597		SS	SL	3.1	0.04	3	0.01
<p>Sparse conc of "pot-boilers" and a few flints on gentle S slope of main Catsholm ridge. Max dimens 29m E/W x 14m N/S. SMR no. 4792/c3</p>								
125	7115 9578		SS	CL	0.8	0.04	1	0.01
<p>Moderate conc of "pot-boilers" and a single flint on a ridge projecting above the level of the peat. Max dimens 24m NW/SE x 18m NE/SW. SMR no. 23676/c2</p>								
126	7096 9585		SS	ChL	1.1	0.08		
<p>Moderate conc of "pot-boilers" covering most of ridge projecting above the level of the peat. Max dimens 40m NW/SE x 21m NE/SW. SMR no. 23675/c2</p>								
127	7116 9595	Preh	SS	ChL	1.5	0.06	21	0.14
<p>Sparse spread of "pot-boilers" and flint at base of main ridge above peat. Max dimens 29m NW/SE x 24m NE/SW. SMR no. 23675/c3</p>								
129	7181 9528	Mes	SS	C	1.2	0.04	32	0.25
<p>Moderate conc of Later Mesolithic flints with sparse "pot-boilers" and bone frags on ridge beside the peat. Max dimens 27m NW/SE x 17m NE/SW. SMR no. 4755/c3</p>								
130	7174 9528	Preh	SS	ChL	1.2	0.07	17	0.31
<p>Sparse to moderate conc of flints with some bone frags and a few "pot-boilers" on a ridge above the peat. Max dimens 34m E/W x 22m N/S. SMR no. 4755/c4</p>								
131	7206 9539		SS	ChL	1.3	0.03		
<p>Sparse to moderate conc of "pot-boilers" on side of ridge emerging from peat. Max dimens 23m NE/SW x 16m NW/SE. SMR no. 23684/c2</p>								
132	7164 9556		SS	ChL	1.2	0.05		
<p>Abundant "pot-boilers" spread across end of ridge just emerging from peat. Max dimens 28m NE/SW x 22m NW/SE. SMR no. 23045/c14</p>								

I: F6

SOUTHERY

METHWOLD

No.	Grid.Ref.	Date	Nature	Soil	Height	Area	(F) no	wt
133	7064 9603		SS	ChL	2.4	0.06	2	0.03
<p>Sparse but locally moderate conc of "pot-boilers" and a couple of flints on a slight rise projecting above the general ground level. Site truncated by field dyke. Min dimens 36m E/W x &gt;18m N/S. SMR no. 23674/c2</p>								
134	6970 9584		SS	SL	1.6	0.02		
<p>Small but moderate spread of "pot-boilers" on W side of ridge with natural gully to E. Max dimens 21m NW/SE x 12m NE/SW. SMR no. 2531/c5</p>								
135	6970 9579		SS	SL	1.8	0.03		
<p>Sparse, locally moderate conc of "pot-boilers" on E side of a low ridge. Max dimens 21m NE/SW x 17m NW/SE. SMR no. 2531/c6</p>								
136	6839 9666	<b>Mes</b>	SS	SL	1.6	0.12	46	0.45
<p>Sparse to moderate conc of flints with sparse "pot-boilers" at W end of Catsholm ridge on slope just above peat. Max dimens 41m N/S x 32m E/W. SMR no. 2533/c3</p>								
137	6928 9613		SS	ChL	1.6	0.04	6	0.03
<p>Sparse conc of "pot-boilers" and a few flints on E edge of the spread. On gentle S slope above peat. Max dimens 26m E/W x 18m N/S. SMR no. 23658/c3</p>								
138	6941 9609		SS	ChL	1.4	0.03		
<p>Sparse spread of "pot-boilers" on gentle E-facing slope above natural gully. Max dimens 13m N/S x 12m E/W. SMR no. 23658/c4</p>								
139	6998 9388	<b>RB</b>	SS	C	5.8	0.08	(F) 22	0.14
<p>Conc of RB pot, mixed with building rubble from now-raised post-med buildings. On gentle N-facing slope above fen. Min dimens 48m N/S x &gt;18m E/W. SMR no. 23657/c2</p>								
140	6451 9768		SS	S	0.8	0.04		
<p>Small, sparse spread of "pot-boilers" on W edge of sandy ridge, just above peat. Max dimens 21m E/W x 19m N/S. SMR no. 24095/c2</p>								

I: F7

SOUTHERY

METHWOLD

No.	Grid.Ref.	Date	Nature	Soil	Height	Area	(F) no	wt
141	6976 9686	Preh	SS	GS	1.2	0.05	23	0.13
<p>Sparse conc of flints on one of a series of interconnecting ridges which, at present, form an island a little distance from the main Catsholm ridge. SMR no. 24126/c2</p>								
142	6988 9658		SS	GL	1.0	0.04	4	0.03
<p>Sparse, locally moderate conc of "pot-boilers" with a few flints mixed in. On NW side of main ridge. Max dimens 29m NE/SW x 16m NW/SE. SMR no. 24126/c3</p>								
143	7100 9610		SS	CL	1.1	0.09	5	0.03
<p>Moderate conc of "pot-boilers" and a couple of (?unassociated) flints. On the edge of a pronounced ridge which runs along the base of the main Catsholm ridge. Max dimens 37m E/W x 28m N/S. SMR no. 24127/c3108 7032 9573</p>								
144	7314 9580	<b>RB</b> Preh	SS	S	6.4	1.56	(P) 47 5	1.14 0.03
<p>On an E/W sandy ridge with peat to S and skirtland to N, the site of a Roman building. Pot (C4) extensive, tile, bone both common. Ridge crosses three fields, including narrow pasture strip and where ground bare, charcoal staining is visible. Max dimens c180m E/W x 110m N/S. SMR no. 4780/c4;24174/c3</p>								
145	7303 9610	<b>LNEBA</b> <b>IA</b>	SS	GS	5.5	0.11	25 (P) 51	0.14 0.39
<p>Sparse to moderate conc of IA pot and bone with some fire-reddened pebbles and a background spread of flint of LNEBA, probably Beaker, appearance. In places darker soil may indicate concentrated activity. Also some flint, probably of Beaker origin. On fairly flat ground at head of a valley. Max dimens 51m E/W x 25m N/S. SMR no. 4780/c5</p>								
146	7311 9576		SS	S	4.9	0.05		
<p>Moderate conc of "pot-boilers" just below ridge top, overlooking tract of peat. Ridge slightly terraced and "pot-boilers" on side of lower terrace. Max dimens 24m N/S x 22m E/W. SMR no. 4780/c6</p>								

## METHWOLD

No.	Grid.Ref.	Date	Nature	Soil	Height	Area	(F) no	wt
147	7301 9578	?LNEBA	SS	S	5.8	0.23	46 (P) 2	0.36 0.01

Sparse to moderate spread of flint with a few "pot-boilers" and two sherds of prehistoric pot. Towards the W end of a sandy ridge overlooking peat to S. Max dimens 59m E/W x 43m N/S.  
SMR no. 4780/c7

148	7324 9600	RB	SS	SL	4.9	0.11	(P) 44	0.85
-----	-----------	----	----	----	-----	------	--------	------

Moderate spread of RB pot with sparse bone and tile. In grey soil on a level area at the head of a valley. Max dimens 40m E/W x 32m N/S.  
SMR no. 24174/c2

149	7330 9538	RB	SS	GL	7.1	0.13	(P) 39	0.42
-----	-----------	----	----	----	-----	------	--------	------

Small sparse spread of RB pot with a few tile frags; on top and N side of chalk ridge some 0.6m higher than the surrounding gravelly loam. Max dimens 36m N/S x 41m E/W.  
SMR no. 24480/c2

150	7258 9617		SS	GS	4.1	0.05		
-----	-----------	--	----	----	-----	------	--	--

Moderate spread of "pot-boilers" in dark-stained soil beside stream. Max dimens 23m E/W x 22m N/S.  
SMR no. 24484/c2

151	7231 9624		SS	SL	3.1	0.05		
-----	-----------	--	----	----	-----	------	--	--

Moderate conc of "pot-boilers" on slight hump of yellow sandy loam beside stream; "pot-boilers" being actively disturbed by plough. Min dimens 28m N/S x >18m E/W.  
SMR no. 24481/c2

152	7177 9526		SS	ChL	3.0	0.03		
-----	-----------	--	----	-----	-----	------	--	--

Sparse to moderate spread of "pot-boilers" in base of valley, on ground sloping slightly to S. Max dimens 23m E/W x 13m N/S.  
SMR no. 4755/c5

153	6394 9362	?LNEBA	SS	S	1.0	0.11	51	0.26
-----	-----------	--------	----	---	-----	------	----	------

Sparse to moderate conc of flint and a few "pot-boilers" on sandy SW edge of island. Further flints to E of main conc may indicate a more general, if diffuse, spread. Max dimens 43m N/S x 28m E/W.  
SMR no. 24466/c2

## METHWOLD

No.	Grid.Ref.	Date	Nature	Soil	Height	Area	(F) no	wt
154	7013 9392	RB	SS	C	6.2	0.10	(P) 68	0.78
<p>Sparse to moderate RB pot (C3-C4) accompanying slight soil discoloration on gentle chalk hillside sloping to NW. About 100m to W and SW (but in Feltwell parish), small group of RB pot but, without any soil staining, suggests a more extensive site. Max dimens 44m E/W x 25m N/S. SMR no. 24440/c4</p>								
155	7120 9501	Med	SS	C	4.6	0.22	(P) 69	0.58
<p>Moderate amounts of med pot (C13-C14) mixed with abundant shell and sparse bone on a slightly raised area beside an old infilled dyke and running eastwards to road. Max dimens 51m NE/SW x 48m NW/SE. SMR no. 24493/c2</p>								
156	7209 9564	LNEBA	SS	C	2.7	0.10	27	0.21
<p>Sparse to moderate conc of flint (possibly with Beaker component), on N side of peat-filled valley. Max dimens 43m E/W x 25m N/S. SMR no. 24494/c2</p>								
157	7234 9520	N	SS	C	4.9	0.12	46	0.44
<p>Sparse to moderate spread of flints with sparse "pot-boilers" on a gentle slope, S of a natural stream. Max dimens 42m E/W x 31m N/S. SMR no. 24487/c3</p>								
158	7244 9518	IA	SS	C	5.3	0.05	(P) 29	0.20
<p>Sparse IA pot, bone and broken, burnt pebbles on gentle chalk slope down to stream on N. Overlain by hedge boundary and could run into field to N. Max dimens 35m E/W x 15m N/S. SMR no. 24487/c2</p>								
159	7201 9534		SS	ChL	1.5	0.09		
<p>Abundant "pot-boilers" spread over top and side of ridge adjacent to peat levels. Max dimens 35m N/S x 29m E/W. SMR no. 24488/c2</p>								
160	6659 9751		SS	S	1.5	0.05		
<p>Spread of "pot-boilers" at extreme W end of sandy ridge. Max dimens 24m E/W x 22m N/S. SMR no. 24497</p>								



## METHWOLD

No.	Grid.Ref.	Date	Nature	Soil	Height	Area	(F) no	wt
161	7248 9536	IA	SS	S	6.1	0.16	(P) 40	0.18
<p>Sparse to moderate IA pot with a few burnt pebbles and bone frags on edge of large natural hollow on chalk hillside sloping down to fen. Max dimens c45m NW/SE x 40m NE/SW. 24486/c2</p>								
162	7010 9588		SS	StL	1.2	0.08		
<p>Moderate conc of "pot-boilers" on a ridge projecting above the peat. Max dimens 31m E/W x 29m N/S. 24495/c2</p>								
163	6991 9581		SS	StL	1.0	0.03		
<p>Sparse to moderate conc of "pot-boilers" on a ridge overlooking the peat fen. Max dimens 20m NE/SW x 15m NW/SE. SMR no. 24495/c3</p>								
U1	7046 9528	Mes	SV;SS	ChL	0.6	-	2	0.03
<p>Ridge or island of mineral soil covered by peat produced Mesolithic blades and waste when modern dyke cleaned in 1959. Depth estimated at 1.8m but top of ridge closer to surface and tip exposed on surface of adjacent field. 2 flints found in dyke-side spread in Dec 1986. SMR no.s 4738; 23214. Fieldwork code MTW CR</p>								
U2	7147 9540	Mes	SS	ChL	1.0	-	13	0.15
<p>Scatter of flints and "pot-boilers" over area c15m diam includes Mes component. On end of ridge projecting into peat. SMR no. 22051/c4. Fieldwork code MTW CI</p>								
U3	6572 9647	Mes EN	SS	S	1.0	-	19	0.23
<p>Even scatter of flints and "pot-boilers" across sandhill. One small conc of "pot-boilers" 5m in diam, recently turned over by plough. SMR no.s 21141; 21142. Fieldwork codes MTW AU &amp; AV.</p>								
U4	7170 9477	IA	SS	GS	9.1	-	(P) 11	0.06
<p>Several small sherds scattered widely over 200m on hill-side above boggy plain. No real concs, but most in extreme NW corner of field. SMR no.s 19656/c1; 23121; 23211/c2. Fieldwork codes MTW CK; CM; NWD AI.</p>								

## METHWOLD

No.	Grid.Ref.	Date	Nature	Soil	Height	Area	(F) no	wt
U5	7170 9477	IA	SS	C	17.4	-	(P) 5	0.01
<p>Sparse scatter of angular-gritted sherds near top of ridge. Insufficient to classify as a site. Nearby an Icenian Boarhorse coin of early C1 AD was found with a metal-detector. SMR no.s 22304/c3; 22364. Fieldwork code MTW DF.</p>								
U6	7026 9406	IA	SS	C	4.6	-	(P) 6	0.03
<p>Sparse scatter of IA sherds beside track. Insufficient to classify as a site but could be a component of the site showing as MTW 113. SMR no. 24440/c3. Fieldwork code MTW FU.</p>								
U7	7068 9435	U	CMK	C	24.6	>0.21	(P) 8	0.03
<p>Cropmark of rectilinear enclosure on CUC AP (ZP 47; dated 1959-60), now largely covered by bank of Cut-off Channel. One Samian sherd found just to E and 7 grey ware sherds in general scatter from field to S. SMR no. 4932; Fieldwork code MTW DC</p>								
U8	6977 9591	Preh	EWK	Ch?	1.6	-	8	0.20
<p>Possible barrow - a mound projecting just above level of slope, c35m N/S x 38m E/W with slight tongue of mineral soil to W. Around it a broad peat-filled depression. A few flints in SE sector. On S facing slope above fen. SMR no. 23235. Fieldwork code MTW CZ.</p>								
U9	721 961	MS	SS	Ch?	4.2	-	(P) 4	0.06
<p>Odd sherds of Ipswich-type ware, 3 in this field, one in field to E. SMR no. 23120; 23670. Fieldwork codes MTW BX; FA.</p>								
U10	7154 9513	<b>Med</b>	SMK SS	C	24.5	-	(P) 10	0.06
<p>A flattish area of chalk marks likely area of church of St Helens. Last vestiges (a wall of chalk) ploughed up by Mr E Wortley some 40 years ago. (pers comm) Also scatter of med sherds around.</p>								

NORTHWOLD

No.	Grid.Ref.	Date	Nature	Soil	Height	Area	(F) no	wt
1	6984 9779		SS	SS	1.7	0.16	12	0.04
<p>Moderate conc of "pot-boilers" (C30m x 25m) and beyond this and overlapping a sparse spread of flints. On N edge of Herringey Hall island. Max dimens 70m E/W x 25m N/S. SMR no. 13458/c3</p>								
2	6975 9779		SS	ChL	2.1	0.05	6	0.04
<p>Sparse to moderate spread of "pot-boilers" with just the odd flint on N edge of island. Max dimens 32m E/W x 20m N/S. SMR no. 13458/c4</p>								
3	6979 9768	?Mes/EN	SS	SL	7.0	0.04	33	0.20
<p>Sparse conc of flint on top of island. Max dimens 23m E/W x 19m N/S. SMR no. 13458/c5</p>								
4	6999 9762	?LNEBA	EWK SS	SL		0.10	3	0.01
<p>Probable barrow on edge of island. Circular mound with diam of c35m and c 1m high. Occ flints on top. SMR no. 13458/c6</p>								
5	7063 9812		SS	G	1.1	0.02		
<p>Sparse conc of "pot-boilers" on ridge just projecting above peat. A couple of flints probably unassociated. Max dimens 22m E/W x 12m N/S. SMR no. 23138/c3</p>								
6	7067 9800		SS	G	0.8	0.02		
<p>Sparse to moderate conc of "pot-boilers" on ridge only just showing above peat. Max dimens 18m N/S x 10m E/W. SMR no. 23138/c4</p>								
7	7069 9798		SS	G	1.1	0.05		
<p>Moderate conc of "pot-boilers" on ridge projecting from peat. Max dimens 26m N/S x 20m E/W. SMR no. 23138/c5</p>								

NORTHWOLD

No.	Grid.Ref.	Date	Nature	Soil	Height	Area	(F) no	wt
8	7077 9797		SS	G	1.2	0.03	2	0.02
	Sparse conc of "pot-boilers" and a couple of flints on ridge above peat. Max dimens 21m E/W x 18m N/S. SMR no. 23138/c6							
9	7066 9745		SS	ChL	2.1	0.02	8	0.03
	Sparse conc of "pot-boilers" and few flints on edge of island. Max dimens 15m E/W x 13m N/S. SMR no. 23210/c2							
10	7079 9701		SS	SL	1.2	0.02	4	0.02
	Sparse conc of "pot-boilers" and a couple of flints on ridge. Max dimens 17m NW/SE x 14m NE/SW. SMR no. 23209/c2							
11	7078 9695		SS	SL	1.4	0.01		
	Sparse conc of "pot-boilers" on ridge. Max dimens 11m diam. SMR no. 23209/c3							
12	7077 9678		SS	SL	1.3	0.04		
	Moderate to abundant conc of "pot-boilers", many derived from rounded pebbles, and one bone frag. Max dimens 23m NW/SE x 21m NE/SW. SMR no. 23209/c4							
13	7072 9681		SS	SL	1.8	0.02		
	Sparse conc of "pot-boilers" on ridge. Max dimens 21m NW/SE x 12m NE/SW. SMR no. 23209/c5							
14	7097 9779		SS	SL	0.7	0.05		
	Moderate to abundant conc of "pot-boilers" at end of ridge. Max dimens 27m NW/SE x 23m NE/SW. SMR no. 23207/c2							
15	7099 9786		SS	SL	0.8	0.07		
	Two sparse to moderate concs of "pot-boilers" which merge on edge of ridge. Max dimens 54m NW/SE x 14m NE/SW. SMR no. 23207/c3							

I: FI4

NORTHWOLD

No.	Grid Ref.	Date	Nature	Soil	Height	Area	(F) no	wt
16	7102	9781	SS	SL	0.8	0.02		
<p>Sparse spread of "pot-boilers" on edge of ridge. Max dimens 19m NW/SE x 13m NE/SW. SMR no. 23207/c4</p>								
17	7108	9778	SS	SL	0.8	0.03		
<p>Sparse to moderate conc of "pot-boilers" on edge of ridge. Max dimens 19m NE/SW x 16m NW/SE. SMR no. 23207/c5</p>								
18	7110	9765	SS	SL	0.8	0.04		
<p>Moderate conc of "pot-boilers" on edge of ridge. Max dimens 25m E/W x 16m N/S. SMR no. 23207/c6</p>								
19	7108	9700	SS	SL	0.7	0.01		
<p>Sparse conc of "pot-boilers" on edge of ridge. Max dimens 14m NW/SE 10m NE/SW. SMR no. 23208</p>								
20	7063	9746	Preh	SS	ChL	1.1	0.05	2 0.02
<p>Abundant "pot-boilers" and a couple of flints at tip of ridge adjacent to island. Max dimens 28m NE/CW x 20m NW/SE. SMR no. 23381</p>								
21	7054	9723	Preh	SS	SI	1.0	0.04	3 0.03
<p>Moderate conc of "pot-boilers" (including many burnt pebbles), and a frag of bone. On edge of ridge and spreading into peat. Max dimens 23m NE/SW x 19m NW/SE. SMR no. 23382</p>								
22	7053	9732		SS	SI	1.2	0.02	
<p>Moderate conc of "pot-boilers" on ridge projecting from island. Possibly two small discrete groups merged through ploughing. Max dimens 20m N/S x 12m E/W. SMR no. 23210/c3</p>								
23	7136	9657	Preh	SS	SL	1.8	0.21	19 0.15
<p>Sparse, locally moderate, conc of "pot-boilers" with a few flints on flat skirtland. Max dimens 53m N/S x 44m E/W. SMR no. 23383/c4</p>								

## NORTHWOLD

No.	Grid.Ref.	Date	Nature	Soil	Height	Area	(F) no	wt
24	7140 9661		SS	SL	1.5	0.01	3	0.02
	Sparse conc of "pot-boilers" with a few (?unassociated) flint flakes. On a slight ridge, the ground sloping down to N. Max dimens 13m N/S x 9m E/W. SMR no. 23383/c1-2							
25	7144 9661		SS	SL	1.8	0.08		
	Abundant "pot-boilers" spread across ridge at W edge of upland. Max dimens 32m N/S x 29m E/W. SMR no. 23383/c3							
26	7133 9668		SS	SL	0.7	0.06		
	Abundant "pot-boilers" spread across narrow ridge at edge of upland. Max dimens 30m NE/SW x 21m NW/SE. SMR no. 23383/c5							
27	7123 9661	LNEBA	SS	SL	1.7	0.04	16	0.16
	Sparse spread of flint on gently-sloping edge of upland overlooking fen. Max dimens 27m NW/SE x 15m NE/SW. SMR no. 23383/c6							
28	7102 9690		SS	SL	0.8	0.02		
	Spread of sparse and much comminuted "pot-boiler" frags on side of ridge surrounded by peat. Max dimens 16m N/S x 15m E/W. SMR no. 23672/c2							
29	7100 9667		SS	SL	0.9	0.03		
	Sparse conc of "pot-boilers" on W side of ridge within a small 'embayment'. Max dimens 25m N/S x 13m E/W. SMR no. 23672/c3							
30	7057 9685		SS	SL	0.7	0.03		
	Sparse conc of "pot-boilers" at end of ridge, just emerging from peat. Max dimens 22m NW/SE x 13m NE/SW. SMR no. 23673/c2							
31	7059 9688		SS	SL	0.7	0.01		
	Sparse conc of "pot-boilers" defined by very dense patches where deposits newly disturbed by plough. At end of ridge emerging from peat. Max dimens 12m NE/SW x 10m NW/SE. SMR no. 23673/c3							

## NORTHWOLD

No.	Grid.Ref.	Date	Nature	Soil	Height	Area	(F) no	wt
32	7167 9713		SS	SL	1.6	0.03		
	Moderate spread of "pot-boilers" on edge of upland overlooking fen. Max dimens 22m NW/SE x 16m NE/SW. SMR no. 23679/c2							
33	7096 9735		SS	C	3.1	0.04	1	0.02
	Sparse conc of "pot-boilers" on edge of a low chalk ridge at edge of island. Max dimens 28m NW/SE x 16m NE/SW. SMR no. 23043/c3							
34	7159 9706		SS	ChL	1.0	0.07		
	Abundant "pot-boilers" spread across N side of ridge, just beyond upland edge. Max dimens 32m NW/SE x 23m NE/SW. SMR no. 23680/c2							
35	7156 9706		SS	ChL	1.0	0.05		
	Conc of abundant "pot-boilers" adjacent to, but not linked to, NWD 34. On ridge close to upland. Max dimens 26m NW/SE x 23m NE/SW. SMR no. 23680/c3							
36	7141 9696		SS	P	0.6	0.02		
	Conc of "pot-boilers" apparently in peat, but probably on an as yet invisible extension to a nearby ridge. Max dimens 19m N/S x 14m E/W. SMR no. 23680/c4							
37	6985 9712		SS	SL	2.1	0.03		
	Sparse and much-fragmented "pot-boilers" on side of ridge projecting above peat. Max dimens 19m N/S x 17m E/W. SMR no. 24382/c2							
38	7170 9657		SS	StL	1.1	0.04	8	0.03
	Sparse to moderate conc of "pot-boilers" with a small group of (?unassociated) flints on E edge. "Pot-boilers" on side and top of loam ridge, flints on a patch of sand. Max dimens 22m E/W x 21m N/S. SMR no. 24492/c2							
39	7176 9666		SS	GL	2.0	0.06		
	Sparse spread of "pot-boilers" on top and side of ridge. Max dimens 45m NW/SE x 15m NE/SW. SMR no. 24492/c3							

## NORTHWOLD

No.	Grid.Ref.	Date	Nature	Soil	Height	Area	(F) no	wt
U1	7167 9688c	LNEBA	SS	ChL	1.0	-	12	0.05
<p>General scatter of flints across ridge at extreme E end of small embayment. SMR no. 23679/cl. Fieldwork code NWD AN.</p>								
U2	7191 9708	RB	SS	C	-	-	(P) 3	0.03
<p>Odd sherds of RB pot and one possible tile frag on chalk hillside above fen. SMR no. 23121. Fieldwork code NWD AI</p>								
A1	7170 9723 7168 9719	RB	CF	-	-	-	-	-
<p>Two hoards of pewter plates found in 1959-60 during ploughing of peat. Present whereabouts uncertain. SMR no. 4777; 4778.</p>								



## SOUTHERY

No.	Grid.Ref.	Date	Nature	Soil	Height	Area	no	wt
1	6070 9564		SS	StL	0.9	0.05	(F) 2	0.05
	Sparse conc of "pot-boilers" and flints on peat-covered lower slope of island. Min dimens 34m NW/SE x >15m NE/SW. SMR no. 24132/c2							
2	6080 9570		SS	StL	1.6	0.09		
	Sparse conc of "pot-boilers" on edge of island overlooking peat fen. Max dimens 45m E/W x 22m N/S. SMR no. 24132/c3							
3	6105 9583		SS	SL	2.4	0.15		
	Sparse and diffuse spread of "pot-boilers" on gentle slope above inlet. Max dimens 47m E/W x 37m N/S. SMR no. 24133							
4	6106 9569		SS	SL	3.1	0.09		
	Sparse spread of "pot-boilers" on upper slope of island. Max dimens 34m E/W x 31m N/S. SMR no. 24134							
5	6130 9568		SS	StL	2.5	0.07		
	Sparse to moderate conc of "pot-boilers", much fragmented. In a low area on N side of field. Max dimens 27m E/W x 31m N/S. SMR no. 13937/c10							
6	6152 9450	Preh	SS	StL	4.6	0.14	(F) 1	0.02
							(P) 81	0.95
	On steep S slope of island, spread of RB pot mixed with post-med debris including ?bone and tile. Most of pot at bottom of slope. Dimens 43m E/W x >36m N/S. SMR no. 14057/c3							
7	6166 9445		SS	StL	3.1	0.05		
	Small spread of much fragmented "pot-boilers" near base of island slope. No other material associated but could be part of SRY 8 complex (see below). Max dimens 29m N/S x 19m E/W. SMR no. 14057/c4							

## SOUTHERY

No.	Grid.Ref.	Date	Nature	Soil	Height	Area	no	wt
8	6170 9452	Preh	SS	GL	4.3-7.7	1.06	(F) 3	0.02
		IA					(P) 47	0.20
		RB					(P) 20	0.21

General spread of coarsely-gritted pottery mixed with comminuted "pot-boilers" on slope of island overlooking fen. On N side of spread, RB pot mixed in suggesting nearby RB site. Min dimens 170m NE/SW x 70m NW/SE.  
SMR no. 14057/c5

9	6123 9527	Preh	SS	GL	5.8	0.38	(F) 3	0.02
		RB					(P) 30	0.22

Sparse spread of RB pot (C3) over a sizeable area on flat top of island. Dimens 70m NW/SE x 60m NE/SW but further sherds to S could indicate a larger spread.  
SMR no. 23711

10	6140 9580	RB	SS	SL	2.7	0.48	(P) 143	1.84
----	-----------	----	----	----	-----	------	---------	------

Moderate spread of RB pot (C3-C4), a few frags of fired clay and ?Roman brick and some bone. Set in grey soil on low mound no more than 0,4m high. Max dimens 108m N/S x 50m E/W.  
SMR no. 14549/c3

11	6252 9572		SS	SL	4.3	0.15		
----	-----------	--	----	----	-----	------	--	--

Abundant "pot-boilers" on gentle E-facing slope close to inlet. Max dimens 42m NE/SW x 40m NW/SE.  
SMR no. 24312/c2

12	6263 9520		SS	SL	6.1	0.15		
----	-----------	--	----	----	-----	------	--	--

Moderate to abundant conc of "pot-boilers" around NW side of gently sloping hollow. Max dimens 42m N/S x 41m E/W.  
SMR no. 24313/c2

13	6279 9587		SS	StL	1.2	0.02		
----	-----------	--	----	-----	-----	------	--	--

Conc of "pot-boilers" on edge of drain; site probably truncated. Dimens 27m NW/SE x >9m NE/SW.  
SMR no. 24362/c2

14	6302 9525		SS	SL	3.7	0.09	(F) 1	0.01
----	-----------	--	----	----	-----	------	-------	------

Sparse, locally moderate conc of "pot-boilers" on E side of island, just above fen. Max dimens 38m NE/SW x 28m NW/SE.  
SMR no. 24360/c2

## SOUTHERY

No.	Grid.Ref.	Date	Nature	Soil	Height	Area	no	wt
15	6302 9520		SS	SL	2.4	0.07		
	Sparse spread of "pot-boilers" on E side of island above fen. A short distance but apparently separate from SRY 14. Max dimens 30m NE/SW x 27m NW/SE. SMR no. 24360/c3							
16	6101 9550	IA Med	SS	StL	3.7	0.21	(P) 52 (P) 3	0.21 0.01
	Sparse spread of IA pot but no associated non-ceramic material; a couple of med sherds mixed in. No obvious soil stain. Max dimens 49m N/S x 48m E/W. S of main dyke, a few more sherds may indicate material disturbed during dyke-cutting. SMR no. 24436/c2;24438/c2. Fieldwork code SRY BK							
17	6062 9510	RB	SS	StL	2.1	0.17	(P) 33	0.40
	Sparse spread of of RB pot (C2-C3), a little bone, few ?tile frags and one bronze coin. Little obvious soil staining. On edge of island. Max dimens 47m NW/SE x 40m NE/SW. SMR no. 16525/c3							
18	6060 9508		SS	StL	1.8	0.05		
	Sparse spread of "pot-boilers" close to but not obviously associated with RB site SRY 17. On edge of island. Min dimens 26m NW/SE x >20m NE/SW. SMR no. 16525/c4							
19	6121 9469	RB	SS	StL	1.5	0.05	(P) 8	0.11
	Sparse spread of "pot-boilers" mixed with a few sherds of RB pot on edge of island. Max dimens 24m NW/SE x 23m NE/SW. SMR no. 24465/c2							
20	6108 9491		SS	SL	1.9	0.08		
	Sparse spread of "pot-boilers" on sandy patch on SW side of island. Max dimens 34m NE/SW x 25m NW/SE. SMR no. 24465/c3							
21	6096 9497		SS	StL	1.8	0.05	(F) 2	0.02
	Conc of "pot-boilers" truncated by dyke. Also a couple of flints. Max dimens 16m NW/SE x 33m NE/SW. SMR no. 24465/c4							

## SOUTHERY

No.	Grid.Ref.	Date	Nature	Soil	Height	Area	no	wt
U1	6110 9388	Preh	CF	GL	20.8			
	Single sherd of flint and sand-gritted pot, Neo or BA in date. Found on emerging loamy mineral soil well beyond S edge of Southery island. SMR no. 24364; Fieldwork code SRY AW.							
U2	6135 9564/c	<b>RB</b>	SV					
	In advance of new A10, Roman finds and features discovered, including three pots, a ditch 2.5m containing carbonised grain, fragments of glass vessels, late Roman coins, probably a dispersed hoard, and a general scatter of Roman pot. SMR no. 13937							
U3	606 951	? <b>RB</b>	CMK	StL	2.1			
	Rectilinear enclosure evidenced as cropmark, sketched onto SMR map. OS aerial photograph 80.063, Frame 007. 10.05.1980. SMR no. 16525/c2							
U4	6070 9527/c	<b>E Sax</b>	CF	StL		(P) 6	0.03	
	Within field which is centred on above grid ref., one decorated sherd of E Sax pot recovered, but not recognised at time. Two fields to E (centred at TL 6119 9532), four possible sherds of E Sax pot and, from field to SE of last (centred at TL 6141 9483), one possible sherd. SMR no.s 16525/c1; 23711/c1; 24467. Fieldwork codes SRY AF;BC;BE.							
U5	6220 9468	<b>RB</b> M Sax L Sax Med	FC					
	From three garden plots, 9 sherds of M Sax pot, c39 sherds of RB material collected between 1981-84 by S Ashley. Also some L Sax and med pot as well. SMR no. 17316							
U6	6215 9458	<b>RB</b> M Sax <b>L Sax</b> <b>Med</b>	FC					
	From garden in village centre, a large fieldwork collection made by S Ashley between 1978-1982 including 10 possible M Sax sherds, 2 Roman fragments and much L Sax and med pot. SMR no. 13904							

## SOUTHERY

No.	Grid.Ref.	Date	Nature	Soil	Height	Area	no	wt
-----	-----------	------	--------	------	--------	------	----	----

U7	6067 9429 6146 9434	?Med	EWK	St	0.6			
----	------------------------	------	-----	----	-----	--	--	--

Ridge of silt running from Great Ouse towards Southery island; about 18-19m wide and 0.4m high, except at W end, next to river, where it loops around and achieves height of 1.2m. At E end, it fades out before reaching upland edge. ?Canal of med date and perhaps quite shallow.  
SMR no. 24725

U8	6184 9480	IA	MD					
----	-----------	----	----	--	--	--	--	--

Two late IA coins: a) bronze potin coin found in 1980; b) Durotrigian bronze coin of early to mid Cl AD, found prior to April 1988.  
SMR no.s 16785;24551

## DENVER

No.	Grid.Ref. (TF)	Date	Nature	Soil	Height	Area	(P) no	wt
1	5820 0046	RB	SS	St	1.8	0.13	38 (B) 5	0.30
Spread of RB pot (C2-C3) and a few frags of briquetage and bone. On top and side of S levee of roddon, spreading down towards hollow of former watercourse. Max dimens 47m NE/SW x 32m NW/SE. SMR no. 24178/c2								
2	5826 0051	RB	SS	St	1.8	0.07	18 (B) 2	0.16
Small conc of RB pot (C2-C3) on S levee of roddon. Max dimens 30m NW/SE x 25m NE/SW. SMR no. 24178/c3								
3	5805 0038	RB	SS	St	1.9	0.09	25	0.22
Moderate spread of RB pot (C2-C3) on S levee of roddon spreading onto gravel of Roman road. Max dimens 30m N/S x 33m E/W. SMR no. 4235/c6								
4	5782 0030	RB	SS	St	1.9	0.21	106 (B) 6	1.12
Spread of RB pot (C3-C4), briquetage and a few bone frags. On S side of Roman road with material spreading onto gravel. Max dimens c 63m E/W x 36m N/S. Material, including hypocaust and roof tiles and bricks, found here in 1930s (Phillips 1970,328). SMR no. 4235/c11								
5	5888 0063	RB	SS	St	1.8	0.18	60	0.56
Spread of RB pot (C2-C3) with a few shells, probably on edge of roddon and adjacent to modern track. Min dimens 46m NW/SE x 45m NE/SW. SMR no. 4240/c2								
6	5900 0059	RB	SS	St	1.5	0.17 0.10	85 (B) 6 44	0.87 0.44
Two spreads of RB pot (N site C3, S site C3-C4) and a little bone opposite each other with gravel of Roman road separating them. Possibly part of same site, but more northerly site has briquetage, the southerly one does not. Both set on a low 'mound' with soil stained grey. Max dimens 45m N/S x 42m E/W (N area); 34m E/W x 32m N/S (S area). SMR no. 4240/c7c8								

## DENVER

No.	Grid.Ref. (TF)	Date	Nature	Soil	Height	Area	(P) no	wt
7	5782 0036	RB	SS	St	2.0	0.30	111 (B) 1	0.94

Spread of RB pot (C2-C3) with some bone on NE side of roddon, just below crest. Max dimens 64m NW/SE x 52m NE/SW. Material, including hypocaust and roof tiles and bricks, found here in 1930s (Phillips 1970,328).

SMR no. 4235/c12

U1	5733 0038	RB	EXC	St	-	-	-	-
----	-----------	----	-----	----	---	---	---	---

Roman bridge abutments and access ramps of a ford, crossing natural watercourse. (Kenny 1933)

SMR no. 2796/c3

## DOWNHAM WEST

No.	Grid.Ref. (TF)	Date	Nature	Soil	Height	Area	(P) no	wt
1	5762 0030	RB	SS	St	1.3	0.17	78 (B) 2	0.85

Abundant Roman pot (C2-C3), with some shell (oyster) and bone, briquetage, and fired clay frags including vitrified pieces, on S side of roddcn levee, below Roman road, but some material spreading on to it. Active destruction of Roman levels visible in ploughed-up charcoal spreads. Max dimens 64m E/W x 30m N/S. Pot and briquetage previously recorded in 1980.  
SMR no. 4235/c4

2	5758 0032	RB	SS	St	2.0	0.12	45 (B) 5	0.53
---	-----------	----	----	----	-----	------	-------------	------

Spread of RB pot (C2-C3), bone and shell (both sparse), briquetage and fuel ash slag set in a darker silt. On inside of S levee sloping down towards central channel of former watercourse. Min dimens 37m N/S x >35m E/W.  
SMR no. 4235/c8

3	5747 0027	RB	SS	St	1.9	0.08	83 (B) 13	1.45
---	-----------	----	----	----	-----	------	--------------	------

Spread of pot(C2-C4), briquetage, fired clay, fuel ash slag and sparse bone frags. On levee of roddon, below (ie S of) Roman road and dropping into hollow beyond. Max dimens 51m NW/SE x >17m NE/SW. Heavy conc of briquetage also recorded in 1980.  
SMR no. 4235/c7



## NORDELPH

No.	Grid.Ref.	Date	Nature	Soil	Height	Area	(P) no	wt
1 (TF)	5601 0027	RB	SS	St	1.1	0.27	42	0.37
<p>Spread of RB pot (C2-C3) in dark grey soil adjacent to, but not on top of, roddon. Max dimens 85m NE/SW x 35m NW/SE. Visible on CUC AP (RC8-EC 180; 24-03-1982). Appears to be crossed by gravel agger (up to 0.4m high) of Roman road. SMR no. 4239/c3</p>								
2 (TF)	5584 0033	RB	SS	St	1.6	0.05	25 (B) 5	0.41
<p>Spread of RB pot (C2-C3) and some briquetage with many brick frags at least some of which are post-med. Set in grey-black soil on steep N edge of roddon. Max dimens 28m E/W x 21m N/S. SMR no. 4239/c4</p>								
3 (TF)	5544 0030	RB	SS	St	1.3	0.62	139 (B) 11	1.77
<p>Extensive spread of RB pot (C2-C3), some bone, shell (oyster), slate frags and quantities of briquetage. In dark soil on N side of roddon and bisected by modern track. Max dimens 175m NE/SW x 40m NW/SE. Possibly the Samian sherds and much burnt daub found by Fowler (SMR no. 4238) came from this site, although RGS gazetteer suggests confusion of location (Phillips 1970,328). SMR no. 16600/c3</p>								
4	5470 9992	RB	SS	St	1.3	0.14	47 (B) 14	0.51
<p>Spread of RB pot (C2-C4), abundant frags of fired clay and briquetage with odd pieces of bone and shell set in dark soil on N side of roddon. Perhaps truncated by former dyke on E side. Max dimens 43m N/S x 42m E/W. SMR no. 24216</p>								
5	5460 9984	RB	SS	St	1.1	0.13	47	0.27
<p>Spread of RB pot (C2-C4) and bone with slight soil discoloration. Perhaps partly covered by bulldozed silt and truncated by modern dyke on N. 60m E/W x 25m N/S. SMR no. 24215</p>								
6	5421 9950	RB	SS	St	1.8	0.43	180 (B) 6	1.91
<p>Moderate spread of RB pot (C3-C4) with small frags of brick and occ pieces of bone and shell all in a slightly greyish soil. Well to S of main roddon but partly over a silt ridge(?a smaller roddon). Probably associated with cropmark enclosures visible on CUC AP;EW 35) Max dimens c120m E/W x 40m N/S SMR no. 13403/c2</p>								

## NORDELPH

No.	Grid.Ref.	Date	Nature	Soil	Height	Area	(P) no	wt
7 (TF)	5550 0023	RB	SS	St	1.7	0.04	23 (B) 5	0.16
<p>Pot (C3) and briquetage in matrix of dark grey soil, just to S of Roman road. Further spread of fragmentary material to S due to modern levelling by bulldozer. Max dimens 24m NE/SW x 20m NW/SE. SMR no. 24479</p>								
8	5392 9960	RB	SS	St	1.8	0.25	25 (B) 11	0.41
<p>Moderate conc of pot (C3-C4) set in dark soil, with much fired clay and a little bone and ?tile. On S side of Fen Causeway roddon. Min dimens c 59m NE/SW x 48m NW/SE. To be equated with undated record of sherds to be found with "burnt horizon" at depth of 4 feet (Phillips 1970, 235). SMR no. 25003</p>								
9	5338 9963	RB	SS	St	1.2		58	0.53
<p>Moderate conc of pot (C3-C4) on slight mound to N of Fen Causeway and close to earlier Roman road. Max dimens 45m E/W x 42m N/S. SMR no. 25000/c2</p>								
10	5303 9862	RB	SS	St	2.1		27 (B) 9	0.44
<p>Sparse spread of pot (C2-C4) with abundant fired clay and briquetage sometimes in concentrated patches. Also patches of grey ashy soil. All on top of roddon. Material continues to S of modern dyke. Max dimens c 60m N/S x 57m E/W. AP (NMR 1923/48; 15.5.1979) shows rectilinear cropmarks over and around pot spread. SMR no. 2495/c2</p>								
11	5299 9943	RB	SS	St	2.1		13 (B) 2	0.17
<p>Small, sparse conc of pot (C2-C4) with a few frags of fired clay and shell set in dark grey soil on S side of Fen Causeway roddon. Max dimens 19m E/W x 17m N/S. SMR no. 25059</p>								
12	5292 9947	RB	SS	St	2.1	0.02	11	0.23
<p>Small, sparse spread of pot and patches of grey ashy soil on N side of Fen Causeway roddon. Max dimens 20m E/W x 10m N/S. SMR no. 25060</p>								

NORDELPH

No.	Grid.Ref.	Date	Nature	Soil	Height	Area	(P) no	wt
13	5388 9990	RB	SS	St	1.2	0.44	83 (B) 1	0.77
<p>Sparse to moderate conc of pot (C2-C4) with occ frag of briquetage and bone, set in a dark soil on W side of Fen Causeway roddon. Max dimens 90m NW/SE x 55m NE/SW. SMR no. 25063</p>								
14	5389 9980	RB	SS	St	1.5	0.07	38 (B) 3	0.29
<p>Sparse to moderate conc of RB pot (C2-C3) with sparse bone in grey soil on side of roddon. Max dimens c 45m N/S x 19m E/W. SMR no. 25062</p>								

UPWELL

No.	Grid.Ref.	Date	Nature	Soil	Height	Area	(P) no	wt
1	5267 9937	RB	SS	St	2.4	0.07	17 (B) 4	0.13

Pot, fired clay, bone and fuel ash slag with perhaps some briquetage. Grey soil not in evidence but gravel mixed in with silt. On N side of roddon just below crest. Max dimens 38m E/W x 21m N/S.  
SMR no. 24387

2	5230 9838	RB	SS	St	1.5	0.06	8 (B) 9	0.07
---	-----------	----	----	----	-----	------	------------	------

Conc of briquetage and fired clay frags with some fuel ash slag and a few RB sherds on edge of hollow, adjacent to ?roddon. Max dimens 27m NW/SE x 24m NE/SW. Previous finds of pot and coins recorded c1963 and 1978. Cropmarks of settlement recorded by CUC and NAU, stretching into adjacent fields, N of Primrose Hall (CUC AP UP 58-59; NAU TL 5098A et. seq.). RGS gazetteer notes rectangular and polygonal enclosures bounded on W and N by drove. (Phillips 1970,234)  
SMR nc. 24388

3	5058 9828	RB	SS	St	2.4	0.46	98	0.90
---	-----------	----	----	----	-----	------	----	------

Conc of pot (C2-C4) with occ bone and oyster shell, and some post-med rubbish. Beside and beyond metalling of Fen Causeway. Appears as dark soil stain on AP (CUC-ED 8; 1982). Max dimens c.80m N/S x 65m E/W.  
SMR no. 2478/c3

4	5041 9831	RB	SS	St	2.1-2.7	0.75	150 (B) 1	1.37
---	-----------	----	----	----	---------	------	--------------	------

Extensive spread of pot (C3-C4) with small amounts of bone and shell on top of and beside ?natural silt ridge. Max dimens 120m NE/SW x 70m NW/SE.  
SMR no. 2478/c2

5	5198 9860	RB	SS	St	1.8	0.06	14 (B) 34	0.41
---	-----------	----	----	----	-----	------	--------------	------

Briquetage spread with sparse pot (?C2) and shell set in dark soil that has reddish tinge. On flat area beside roddon. Saltern site. Max dimens c 28m E/W x 26m N/S.  
SMR no. 25065

UPWELL

No.	Grid.Ref.	Date	Nature	Soil	Height	Area	(P) no	wt
6	5211 9860	RB	SS	St	1.5	0.28	19 (B) 34	0.47

Two areas of dark soil. More northerly has reddish tinge and briquetage frags. The S briquetage spread has pot (C3) mixed in. On flat silt "ledge" beside roddon. Overall dimens c 64m N/S x 49m E/W.

SMR no. 25064

7	5068 9837	RB	SS	St	2.4	0.05	21	0.15
---	-----------	----	----	----	-----	------	----	------

Small sparse spread of pot (C3-C4) with few bone frags set in grey soil, just to S of Fen Causeway. Max dimens 28m E/W x 21m N/S.

SMR no. 25080/c2

U1	5263 9843	RB	CMK	S	-	-	-	-
----	-----------	----	-----	---	---	---	---	---

On an RAF AP (106G/UK/1601/4069; 25.7.1946) group of small rectilinear enclosures on either side of roddon. (Phillips 1970, 235). SMR notes RB pot and skeletons found by W Warby (not dated). Briquetage found in 1978 by O.S. Inspector (Not located in 1988) reinforces identification as saltern site.

SMR no. 2474

U2	5180 9700	RB	CMK	-	-	-	-	-
----	-----------	----	-----	---	---	---	---	---

Small group of rectilinear enclosures with drove recorded on RAF AP (106G/UK/1634/1219; 9.7.1946) by P Salway (Phillips 1970, 234). Area not walked during present survey.

SMR no. 2489

U3	5306 9834	RB	EWK	-	-	-	-	-
----	-----------	----	-----	---	---	---	---	---

Irregular small enclosures (Phillips 1970, 235), under grass in 1946 (RAF/106G/UK/1601/4069; 25.7.1946), now arable. Not investigated in 1988.

SMR no. 15807



Table A. Overall Composition

	cores	waste	core irreg. trimming flakes	flakes	blades	retouched	other	TOTALS	no. of collections	mean no. of pieces in collection
Predominantly Mesolithic	46 3.4%	11 0.8%	29 2.2%	693 51.8%	501 37.5%	57 4.3%	0 0.0%	1337	11	122
Predominantly Earlier Neolithic	13 1.7%	2 0.3%	6 0.8%	470 60.1%	234 29.9%	57 7.3%	0 0.0%	782	10	78
Predominantly Mesolithic &/or Earlier Neolithic	33 3.6%	3 0.3%	25 2.7%	523 57.0%	275 30.0%	58 6.3%	0 0.0%	917	23	40
Predominantly Later Neolithic	14 3.7%	3 0.8%	4 1.0%	263 69.0%	45 11.8%	52 13.6%	0 0.0%	381	8	48
Predominantly Beaker	15 2.0%	10 1.3%	6 0.8%	494 65.5%	121 16.0%	108 14.3%	0 0.0%	754	12	63
Predominantly Bronze Age	12 5.8%	8 3.9%	2 1.0%	144 69.9%	14 6.8%	26 12.6%	0 0.0%	206	4	52
Predominantly Later Neolithic/ Early Bronze Age	97 3.7%	24 0.9%	31 1.2%	1847 69.8%	411 15.5%	235 8.9%	0 0.0%	2645	55	48
Mixed or Undated	121 3.1%	38 1.0%	49 1.2%	2677 67.6%	804 20.3%	266 6.7%	4 0.1%	3959	247	16
Non-site	111 2.4%	22 0.5%	53 1.2%	2912 64.2%	909 20.1%	522 11.5%	2 0.1%	4531	429	11
TOTALS	462 3.0%	121 0.8%	205 1.3%	10023 64.6%	3314 21.4%	1381 8.8%	6 0.1%	15512		

Table B. Cores

	Single- platform (A1-A2)	Multi- platform (B-C)	Keeled (D-E, non- discoidal)	Levallois & Other Discoidal	Unclassifiable/ Fragmentary	TOTALS	No. with at least some blade scars
Predominantly Mesolithic	13 28.2%	20 43.5%	1 2.2%	0 0.0%	12 26.1%	46	31 67.4%
Predominantly Earlier Neolithic	2 15.4%	2 15.4%	3 23.1%	0 0.0%	6 46.2%	13	6 46.2%
Predominantly Mesolithic &/or Earlier Neolithic	9 27.3%	10 30.3%	6 18.2%	1 3.0%	7 21.2%	33	13 39.4%
Predominantly Later Neolithic	1 7.1%	5 35.7%	1 7.1%	4 28.5%	3 21.4%	14	4 28.6%
Predominantly Beaker	3 20.0%	3 20.0%	3 20.0%	0 0.0%	6 40.0%	15	4 28.6%
Predominantly Bronze Age	4 33.3%	2 16.7%	3 25.0%	0 0.0%	3 25.0%	12	0 0.0%
Predominantly Later Neolithic/ Early Bronze Age	23 23.7%	24 24.7%	17 17.6%	5 5.2%	28 28.8%	97	26 26.8%
Mixed or Undated	26 21.5%	36 29.8%	18 14.9%	2 1.7%	39 32.2%	121	32 26.4%
Non-site	11 9.9%	35 31.5%	20 18.0%	3 2.7%	42 37.8%	111	32 28.9%
TOTALS	92 19.9%	137 29.7%	72 15.6%	15 3.2%	146 31.6%	462	148 32.0%

2: A7-8



Table C. Complete Flakes and Blades

	Cortical	Partly Cortical	Non- Cortical	TOTALS	Hinge Fractures
Predominantly Mesolithic	15 2.3%	348 52.6%	299 45.2%	662	112 16.9%
Predominantly Earlier Neolithic	4 1.3%	172 54.4%	140 44.3%	316	59 18.7%
Predominantly Mesolithic &/or Earlier Neolithic	3 0.7%	222 48.4%	234 51.0%	459	114 24.8%
Predominantly Later Neolithic	1 0.7%	57 40.7%	82 58.6%	140	39 27.9%
Predominantly Beaker	10 2.8%	188 51.8%	165 45.5%	363	128 35.3%
Predominantly Bronze Age	5 5.3%	49 51.6%	41 43.2%	95	14 14.7%
Predominantly Later Neolithic/ Early Bronze Age	25 2.1%	585 48.6%	593 49.3%	1203	356 29.6%
Mixed or Undated	44 2.5%	923 51.6%	823 46.0%	1790	451 25.2%
Non-site	35 1.7%	993 48.3%	1026 50.0%	2054	535 26.0%
TOTALS	142 2.0%	3537 49.9%	3403 48.1%	7082	1808 25.5%

2: A9

Table D. Punctiform, faceted and cortical butts expressed as % of flakes + blades + retouched pieces

	punctiform	faceted	cortical	totals	flakes + blades + retouched
Predominantly Mesolithic	213 17.0%	25 2.0%	93 7.4%	331	1251
Predominantly Earlier Neolithic	111 14.6%	24 3.2%	22 2.9%	157	761
Predominantly Mesolithic &/or Earlier Neolithic	186 21.7%	22 2.6%	23 2.7%	231	856
Predominantly Later Neolithic	40 11.1%	16 4.4%	8 2.2%	64	360
Predominantly Beaker	67 9.2%	17 2.3%	46 6.3%	130	723
Predominantly Bronze Age	4 2.2%	8 4.3%	14 7.6%	26	184
Predominantly LNEBA	318 12.7%	96 3.8%	149 6.0%	563	2499
Mixed or Undated	558 14.8%	98 2.6%	178 4.8%	834	3747
Non-site	586 13.5%	69 1.6%	239 5.5%	894	4343
Totals	2083 14.1%	375 2.5%	772 5.2%		14724

2: AIO

Table E. Retouched Forms

- |   |   |
|---|---|
| 1 = LEAF ARROWHEAD                          | 2 = PETIT TRANCHET ARROWHEAD            |
| 3 = CHISEL ARROWHEAD                        | 4 = OBLIQUE ARROWHEAD                   |
| 5 = BARBED & TANGED ARROWHEAD               | 6 = TRIANGULAR ARROWHEAD                |
| 7 = LAUREL LEAF                             | 8 = OTHER/INDET./FRAG. ARROWHEAD        |
| 9 = UNFINISHED ARROWHEAD OR ARROWHEAD BLANK | 10 = SCRAPER                            |
| 11 = BORER                                  | 12 = PLANO-CONVEX OR SCALE-FLAKED KNIFE |
| 13 = BACKED KNIFE                           | 14 = FLINT DAGGER                       |
| 15 = NOTCH                                  | 16 = DENTICULATE                        |
| 17 = SAW                                    | 18 = SERRATED PIECE                     |
| 19 = TANGED OR SHOULDERED BLADE             | 20 = BURIN                              |
| 21 = MICROLITH                              | 22 = MICROBURIN                         |
| 23 = TRUNCATED PIECE                        | 24 = MISC. RETOUCED                     |
| 25 = 'FABRICATOR' OR ROD                    | 26 = MISC. HEAVY IMPLEMENT              |
| 27 = AXE/ADZE                               | 28 = FLAKE FROM GROUND IMPLEMENT        |
| 29 = TRANCHET AXE OR AXE SHARPENING FLAKE   | 30 = SHAFT-HOLE IMPLEMENT               |
| 31 = HAMMERSTONE                            |   |

	1	2	3	4	5	6	7	8	9	10	11	12	13	14	15	16	17	18	19	20	21	22	23	24	25	26	27	28	29	30	31	TOTALS	
Predominantly Mesolithic	1	0	0	0	1	0	0	0	0	11	0	2	0	0	0	1	0	4	0	3	16	0	10	8	0	0	0	0	0	0	0	0	57
	1.7%	0.0%	0.0%	0.0%	1.7%	0.0%	0.0%	0.0%	0.0%	19.3%	0.0%	3.5%	0.0%	0.0%	0.0%	1.7%	0.0%	7.1%	0.0%	5.3%	28.1%	0.0%	17.5%	14.1	0.0%	0.0%	0.0%	0.0%	0.0%	0.0%	0.0%		
Predominantly Earlier Neolithic	6	1	0	0	0	0	0	1	3	22	2	1	0	0	0	0	0	11	0	0	0	0	1	7	0	0	1	1	0	0	0	0	57
	10.5%	1.8%	0.0%	0.0%	0.0%	0.0%	0.0%	1.8%	5.3%	38.6%	3.5%	1.8%	0.0%	0.0%	0.0%	0.0%	0.0%	19.3%	0.0%	0.0%	0.0%	0.0%	1.8%	12.3%	0.0%	0.0%	1.8%	1.8%	0.0%	0.0%	0.0%		
Predominantly Mesolithic &/or Earlier Neolithic	0	0	0	0	0	0	0	0	1	27	0	0	2	0	0	0	0	17	0	0	1	0	0	8	0	0	0	2	0	0	0	0	58
	0.0%	0.0%	0.0%	0.0%	0.0%	0.0%	0.0%	0.0%	1.7%	46.6%	0.0%	0.0%	3.4%	0.0%	0.0%	0.0%	0.0%	2.3%	0.0%	0.0%	1.7%	0.0%	0.0%	13.8%	0.0%	0.0%	0.0%	3.4%	0.0%	0.0%	0.0%		
Predominantly Later Neolithic	0	1	5	7	0	0	0	1	1	26	1	0	0	0	0	0	0	5	0	0	1	0	0	3	1	0	0	0	0	0	0	0	52
	0.0%	1.9%	9.6%	13.5%	0.0%	0.0%	0.0%	1.9%	1.9%	50.0%	1.9%	0.0%	0.0%	0.0%	0.0%	0.0%	0.0%	9.6%	0.0%	0.0%	1.9%	0.0%	0.0%	5.8%	1.9%	0.0%	0.0%	0.0%	0.0%	0.0%	0.0%		
Predominantly Beaker	0	0	0	0	1	0	0	0	0	75	0	6	0	1	0	1	0	7	1	0	1	0	0	13	0	0	1	0	0	0	0	1	108
	0.0%	0.0%	0.0%	0.0%	0.9%	0.0%	0.0%	0.0%	0.0%	69.5%	0.0%	5.6%	0.0%	0.9%	0.0%	0.9%	0.0%	6.5%	0.9%	0.0%	0.9%	0.0%	0.0%	12.1%	0.0%	0.0%	0.9%	0.0%	0.0%	0.0%	0.9%		
Predominantly Bronze Age	0	0	0	0	0	0	0	0	0	16	0	0	0	0	0	3	0	0	0	0	0	0	0	3	1	0	0	0	0	0	0	3	26
	0.0%	0.0%	0.0%	0.0%	0.0%	0.0%	0.0%	0.0%	0.0%	61.5%	0.0%	0.0%	0.0%	0.0%	0.0%	11.5%	0.0%	0.0%	0.0%	0.0%	0.0%	0.0%	0.0%	11.5%	3.8%	0.0%	0.0%	0.0%	0.0%	0.0%	11.5%		
Predominantly Later Neolithic/Early Bronze Age	0	1	0	5	1	1	0	1	3	150	5	4	1	0	0	6	1	24	0	0	2	0	2	20	1	2	0	4	1	0	0	235	
	0.0%	0.4%	0.0%	2.1%	0.4%	0.4%	0.0%	0.4%	1.3%	63.8%	2.1%	1.7%	0.4%	0.0%	0.0%	2.6%	0.4%	10.2%	0.0%	0.0%	0.9%	0.0%	0.9%	8.5%	0.4%	0.9%	0.0%	1.7%	0.4%	0.0%	0.0%		
Mixed or Undated	4	1	1	0	0	0	0	0	2	167	3	1	1	0	1	4	1	24	0	0	2	1	2	37	2	2	3	4	0	1	2	266	
	1.5%	0.4%	0.4%	0.0%	0.0%	0.0%	0.0%	0.0%	0.8%	62.8%	1.1%	0.4%	0.4%	0.0%	0.4%	1.5%	0.4%	9.0%	0.0%	0.0%	0.8%	0.4%	0.8%	13.9%	0.8%	0.8%	1.1%	1.5%	0.0%	0.4%	0.8%		
Non-Site	8	0	0	6	5	0	1	1	6	346	4	13	2	0	0	9	0	48	0	0	3	0	2	54	5	1	4	2	1	0	1	522	
	1.5%	0.0%	0.0%	1.1%	1.0%	0.0%	0.2%	0.2%	1.1%	66.3%	0.8%	2.5%	0.4%	0.0%	0.0%	1.7%	0.0%	9.2%	0.0%	0.0%	0.6%	0.0%	0.4%	10.3%	1.0%	0.2%	0.8%	0.4%	0.2%	0.0%	0.2%		
TOTALS	19	4	6	18	8	1	1	4	16	840	15	27	6	1	1	24	2	140	1	3	26	1	17	153	10	5	9	13	2	1	7	1381	
	1.4%	0.3%	0.4%	1.3%	0.6%	0.1%	0.1%	0.3%	1.2%	60.8%	1.1%	2.0%	0.4%	0.1%	0.1%	1.7%	0.1%	10.1%	0.1%	0.2%	1.9%	0.1%	1.2%	11.1%	0.7%	0.4%	0.6%	0.9%	0.1%	0.1%	0.5%		

Table F. Raw Material from whole area

	Chalk Flint	Gravel Flint	Orange Flint	Re-worked Artefacts	Indeter- minate Flint	Stone	Totals
Predominantly Mesolithic	81 6.1%	26 1.9%	965 72.2%	1 0.1%	264 19.7%	0 0.0%	1337
Predominantly Earlier Neolithic	47 6.0%	31 4.0%	327 41.8%	1 0.1%	376 48.1%	0 0.0%	782
Predominantly Mesolithic &/or Earlier Neolithic	80 8.7%	13 1.4%	241 26.3%	3 0.3%	580 63.3%	0 0.0%	917
Predominantly Later Neolithic	35 9.2%	1 0.2%	49 12.9%	3 0.8%	293 76.9%	0 0.0%	381
Predominantly Beaker	130 17.2%	19 2.5%	244 32.4%	3 0.4%	358 47.5%	0 0.0%	754
Predominantly Bronze Age	25 12.1%	6 2.9%	56 27.2%	8 3.9%	111 53.9%	0 0.0%	206
Predominantly Later Neolithic/ Early Bronze Age	319 12.1%	36 1.4%	728 27.5%	6 0.2%	1556 58.8%	0 0.0%	2645
Mixed or Undated	384 9.7%	82 2.1%	931 23.5%	7 0.2%	2532 63.0%	23 0.6%	3959
Non-Site	654 14.4%	54 1.2%	1014 22.4%	16 0.4%	2789 61.5	4 0.1%	4531
Totals	1755 11.3%	268 1.7%	4555 29.4%	48 0.3%	8859 57.1%	27 0.2%	15512

Table G. Raw Material: Hockwold cum Wilton only

	Chalk Flint	Gravel Flint	Orange Flint	Re-worked Artefacts	Indeter- minate Flint	Stone	Total
Predominantly Mesolithic	51 4.7%	25 2.3%	692 63.8%	1 0.1%	324 43.1%	0 0.0%	1093
Predominantly Earlier Neolithic	21 9.3%	25 11.0%	41 18.1%	0 0.0%	140 61.6%	0 0.0%	227
Predominantly Mesolithic &/or Earlier Neolithic	3 4.0%	2 2.7%	23 30.7%	0 0.0%	47 25.0%	0 0.0%	75
Predominantly Later Neolithic	0 0.0%	0 0.0%	0 0.0%	0 0.0%	0 0.0%	0 0.0%	0
Predominantly Beaker	100 23.0	12 2.8%	156 36.0%	2 1.2%	163 36.9%	0 0.0%	433
Predominantly Bronze Age	8 22.9%	4 11.4%	0 0.0%	0 0.0%	23 65.7%	0 0	35
Predominantly Later Neolithic/ Early Bronze Age	97 16.0%	23 3.8%	87 14.3%	1 0.2%	400 65.7%	0 0.0%	608
Mixed or Undated	90 13.4%	44 6.6%	174 25.9%	1 0.1%	362 53.9%	1 0.1%	672
Non-Site	142 24.7%	5 0.9%	127 22.1%	0 0.0%	301 52.3%	0 0.0%	575
Totals	512 13.8%	140 3.8%	1300 35.0%	5 0.1%	1760 47.3%	1 0.1%	3718

Table H. Pre-iron Age pottery (1) Weights in g

Note: HCM 18 \* denotes pottery recovered in the course of more thorough, gridded collection over HCM 18 (Appendix II)

Site	E N		Grimston		Mildenhall		Indet. Bowl		P'boro'		Grooved Ware		Beaker		Rust. Beaker		EBA		Indet. Grogged		Indet. Flint- l/or Sand- Tempered		Fired Clay	
	area	TL	no.	wt	no.	wt	no.	wt	no.	wt	no.	wt	no.	wt	no.	wt	no.	wt	no.	wt	no.	wt	no.	wt
FML 26	6920	9145	0	0	0	0	0	0	0	0	0	0	0	0	0	0	0	0	0	0	2	2	0	0
FML 29	6924	9158	0	0	0	0	0	0	0	0	0	0	0	0	0	0	0	0	0	0	4	18	0	0
FML 36	6936	9133	0	0	0	0	0	0	0	0	0	0	0	0	0	0	0	0	1	1	0	0	0	0
FML 51	6914	9253	0	0	0	0	11	27	0	0	0	0	0	0	0	0	0	0	0	0	0	0	0	0
FML 51	6933	9259	0	0	0	0	0	0	0	0	0	0	2	2	0	0	0	0	1	1	0	0	1	5
FML 53	6930	9247	0	0	0	0	0	0	0	0	0	4	12	0	0	0	0	0	1	9	1	2	0	0
FML 83	6936	9230	0	0	0	0	0	0	0	0	0	1	5	0	0	0	0	0	0	0	3	6	0	0
FML 84	6932	9231	0	0	0	0	0	0	0	0	0	0	0	0	0	0	0	0	0	0	2	8	0	0
FML 93	6927	9129	0	0	0	0	0	0	0	0	0	0	0	0	0	0	0	0	0	0	2	4	0	0
FML 95	6910	9126	0	0	0	0	0	0	0	0	0	2	6	0	0	0	0	0	0	0	0	0	0	0
FML 107	6905	9077	0	0	1	5	3	38	0	0	0	3	7	1	3	2	13	1	1	1	7	20	0	0
FML 132	6901	9140	0	0	0	0	0	0	0	0	0	0	0	1	8	0	0	1	2	13	53	0	0	
FML 134	6903	9127	0	0	0	0	9	73	0	0	0	0	0	0	0	0	0	0	0	0	0	0	0	0
FML 135	6885	9116	0	0	0	0	0	0	0	0	0	0	0	0	0	0	0	0	0	2	8	0	0	
FML 136	6889	9109	0	0	2	29	98	521	0	0	0	1	15	1	12	0	0	5	21	9	18	0	0	
FML 138	6891	9094	0	0	0	0	0	0	0	0	0	0	0	0	0	0	0	0	0	2	7	0	0	
FML 140	6903	9191	0	0	0	0	0	0	0	0	0	0	0	0	0	0	0	0	0	2	7	0	0	
FML 141	6920	9293	0	0	0	0	0	0	0	0	0	1	3	0	0	0	0	0	0	0	0	0	0	0
FML 142	6912	9281	0	0	0	0	0	0	0	0	0	1	2	0	0	0	0	2	6	1	7	0	0	
FML 150	6905	9048	0	0	0	0	0	0	0	0	0	0	0	0	0	0	0	0	0	1	3	0	0	
FML 180	6856	9043	0	0	0	0	0	0	0	0	0	0	0	0	0	0	0	1	5	0	0	0	0	
FML CH	6925	9133	0	0	0	0	0	0	0	0	0	0	0	0	0	0	0	1	2	1	2	0	0	
FML CN	6913	9097	0	0	0	0	0	0	0	0	0	0	0	0	0	0	0	0	0	2	4	0	0	
FML CP	6963	9104	0	0	0	0	0	0	0	0	0	0	0	0	0	0	0	0	0	1	8	0	0	
FML DR	6921	9290	0	0	0	0	0	0	0	0	0	0	0	0	0	0	0	0	0	1	3	0	0	
FML DT	6923	9284	0	0	0	0	0	0	0	0	0	0	0	0	0	0	0	0	0	1	6	0	0	
FML EE	6991	9136	0	0	0	0	0	0	0	0	0	0	0	0	0	0	0	0	0	1	2	0	0	
FML EM	6320	8847	0	0	0	0	0	0	0	0	0	0	0	0	0	1	20	0	0	0	0	0	0	0
HCM 18	6580	8555	0	0	0	0	0	0	0	0	0	0	0	0	0	0	0	0	0	1	6	3	8	
HCM 18 *	6580	8555	0	0	0	0	0	0	0	1	10	5	7	1	3	3	9	3	9	4	15	21	71	
HCM 22	6814	8783	0	0	0	0	0	0	0	0	0	0	0	0	0	0	0	0	0	1	3	0	0	
HCM 33	6661	8621	0	0	0	0	0	0	0	0	0	5	16	0	0	1	11	4	8	1	3	0	0	
HCM 33/34			0	0	0	0	0	0	0	0	0	0	0	0	0	0	3	11	0	0	0	0	0	0
HCM 34	6662	8617	0	0	0	0	0	0	0	0	0	0	0	0	0	9	53	0	0	0	0	0	0	0
HCM 48	6911	8699	0	0	0	0	0	0	0	0	0	0	0	1	2	0	0	0	0	0	0	0	0	0
HCM 66	6818	8814	0	0	0	0	0	0	0	0	0	0	0	0	0	0	0	0	0	1	7	0	0	0
HCM 88	6681	8610	0	0	0	0	0	0	0	0	0	0	0	0	0	0	0	1	3	0	0	0	0	0
HCM 96	6856	8876	0	0	0	0	0	0	0	0	0	0	0	1	5	0	0	0	0	0	0	0	0	0
HCM 97	6851	8881	0	0	0	0	0	0	0	0	0	0	0	0	0	0	0	0	0	1	3	0	0	0
HCM 99	6860	8889	0	0	0	0	1	5	0	0	0	0	0	0	0	0	0	0	0	0	0	0	0	0
HCM BK	6948	8907	0	0	0	0	0	0	0	0	0	0	0	0	0	0	0	0	0	1	2	0	0	0

Table H. Pre-Iron Age pottery (2) Weights in g

Site	E	N	Grimston		Mildenhall		Indet. Bowl		P'boro'		Grooved Ware		Beaker		Rust. Beaker		EBA		Indet. Grogged		Indet. Flint- &/or sand-Tempered		Fired Clay			
			no.	wt	no.	wt	no.	wt	no.	wt	no.	wt	no.	wt	no.	wt	no.	wt	no.	wt	no.	wt	no.	wt		
HCW	0	BV	6867	8823	0	0	0	0	0	0	0	0	0	0	0	0	0	0	0	0	1	1	0	0		
HCW	0	CB	6829	8882	0	0	0	0	0	0	0	0	0	0	0	0	0	0	0	0	1	1	0	0		
MTW	6		6507	9657	0	0	0	0	27	129	6	16	0	0	0	0	0	0	0	0	0	0	0	0		
MTW	7		6503	9668	0	0	0	0	14	74	0	0	0	0	0	0	0	0	0	0	1	3	1	4		
MTW	36		6425	9417	0	0	0	0	0	0	0	0	0	0	0	0	0	0	1	2	9	43	0	0		
MTW	39		6898	9314	0	0	0	0	0	0	1	20	0	0	0	0	0	0	0	0	0	0	0	0		
MTW	43		6955	9380	0	0	0	0	0	0	0	0	0	0	0	0	0	0	0	1	2	0	0			
MTW	44		6950	9377	0	0	0	0	0	0	0	0	0	0	0	0	0	0	1	6	0	0	0	0		
MTW	46		6945	9374	0	0	0	0	0	0	0	0	0	0	0	0	0	0	0	2	6	0	0			
MTW	49		6931	9359	0	0	0	0	0	0	0	0	0	0	0	1	13	0	0	1	4	0	0			
MTW	51		6926	9353	0	0	0	0	0	0	0	0	0	0	0	0	0	0	0	1	4	0	0			
MTW	52		6921	9352	0	0	0	0	0	0	0	0	0	0	0	0	0	0	0	1	2	0	0			
MTW	57		6913	9307	0	0	0	0	0	0	0	0	0	0	0	0	0	0	0	1	4	0	0			
MTW	58		6902	9307	0	0	0	0	0	0	0	0	0	0	0	0	0	1	3	1	2	0	0			
MTW	61		7189	9570	0	0	0	0	1	7	0	0	0	0	0	0	0	1	10	2	1	0	0			
MTW	67		7158	9572	1	10	0	0	0	0	0	0	0	0	0	0	0	0	0	3	4	0	0			
MTW	69		7155	9567	0	0	0	0	1	10	0	0	0	0	0	0	0	0	0	4	11	0	0			
MTW	70		7168	9564	0	0	0	0	0	0	0	0	0	0	0	0	0	0	0	1	3	0	0			
MTW	89		7161	9537	0	0	0	0	0	0	0	0	0	0	0	0	0	0	0	1	14	0	0			
MTW	85		7206	9636	0	0	0	0	0	0	0	0	0	0	0	0	0	0	0	1	4	0	0			
MTW	101		6973	9413	0	0	0	0	0	0	0	0	0	0	0	0	0	0	0	3	3	0	0			
MTW	147		7301	9578	0	0	0	0	0	0	0	0	0	0	0	0	0	0	0	2	9	0	0			
MTW	AS		7031	9463	0	0	0	0	0	0	0	0	0	0	1	2	0	0	0	0	0	0	0	0		
MTW	BE		6928	9353	0	0	0	0	0	0	0	0	0	0	0	0	0	0	0	1	14	0	0			
MTW	CS		6981	9410	0	0	0	0	0	0	0	0	0	0	0	0	0	0	0	1	7	0	0			
MTW	CU		6826	9620	0	0	0	0	0	0	0	0	0	0	0	0	0	0	0	1	7	0	0			
MTW	CV		6989	9411	0	0	0	0	0	0	0	0	1	3	0	0	0	0	0	0	0	0	0	0		
MTW	DG		7175	9489	0	0	0	0	0	0	0	0	0	0	0	0	0	0	0	2	10	0	0			
MTW	DJ		7058	9464	0	0	0	0	0	0	0	0	1	2	0	0	0	0	0	0	0	0	0	0		
MTW	EJ		6928	9579	0	0	0	0	0	0	0	0	0	0	0	0	0	0	0	1	8	0	0			
MTW	FA		7238	9606	0	0	0	0	0	0	0	0	0	0	0	0	0	0	0	1	4	0	0			
MTW	FB		7303	9596	0	0	0	0	0	0	0	0	0	0	0	0	0	0	0	2	13	0	0			
MTW	FO		6465	9467	0	0	0	0	1	15	0	0	0	0	0	0	0	0	0	0	0	0	0	0		
MTW	GC		7239	9519	0	0	0	0	0	0	0	0	0	0	0	0	0	0	0	1	5	0	0			
MTW	GE		7253	9534	0	0	0	0	0	0	0	0	0	0	0	0	0	0	1	10	0	0	0			
MTW	GF		7006	9583	0	0	0	0	0	0	0	0	0	0	1	10	0	0	0	1	10	0	0			
MTW	AB		7041	9768	0	0	0	0	0	0	0	0	1	3	0	0	0	0	0	0	0	0	0	0		
MTW	AI		7198	9693	0	0	0	0	0	0	0	0	0	0	0	0	0	0	0	1	3	0	0			
SRY	AI		6167	9449	0	0	0	0	0	0	0	0	0	0	0	0	1	10	1	2	0	0	0			
SRY	AW		6110	9388	0	0	0	0	0	0	0	0	0	0	0	0	0	0	0	1	2	0	0			
TOTALS					1	10	3	34	166	899	7	36	1	10	33	94	12	49	17	119	31	115	119	433	26	88
mean wt (g)						10		11		5		6		10		3		4		7		4		4		3

Overall total 390 sherds, 1.799 kg