

**EXCAVATIONS IN  
THETFORD, 1980–1982,  
FISON WAY, Volume Two**

East Anglian Archaeology

Norfolk Field Archaeology Division 1992

# **Excavations in Thetford, 1980-1982, Fison Way Volume Two: Large Figures**

**by Tony Gregory**

with contributions from  
A. Bartlett, J. Bayley, D. Gurney,  
F. Healy, M. Henig, C. Johns,  
R. Linton, G. Lloyd-Morgan, D. Mackreth,  
J. McKinley, P. Murphy, T. O'Connor,  
V. Rigby, G. Webster,  
D. Williams, P. Wilthew

illustrations by  
F. Gordon, M. Mathews, P. Millington-Wallace,  
H. Spalding, J. Stokes, S. White

photographs by  
R. Carr, D. Edwards,  
D. Wicks

**East Anglian Archaeology  
Report No. 53, 1991**

**Field Archaeology Division  
Norfolk Museums Service**

EAST ANGLIAN ARCHAEOLOGY  
REPORT NO. 53

Published by  
Field Archaeology Division  
Norfolk Museums Service  
Union House  
Gressenhall  
Dereham  
Norfolk NR20 4DR

in conjunction with  
The Scole Archaeological Committee Ltd.

Editor: Peter Wade-Martins

EAA Managing Editor: Susie West  
Scole Editorial Sub-Committee:  
David Buckley, County Archaeologist, Essex Planning Department  
Keith Wade, County Archaeological Officer, Suffolk Planning Department  
Peter Wade-Martins, County Field Archaeologist, Norfolk Museums Service  
Stanley West

Typeset in Plantin by Spire Origination Ltd, Norwich  
Printed by Crowes of Norwich

© Norfolk Field Archaeology Division 1991

ISBN 0 905594 05 3

For details of *East Anglian Archaeology*, see last page

This volume is published with the aid of a grant from  
the Historic Buildings and Monuments Commission for England

**Cover Illustrations**

Volume 1: Reconstruction of the site in Phase II, detail of plate LVIII  
Volume 2: Reconstruction of the site in Phase III, detail of plate LIX

## List of figures

- |         |  |          |   |
|---------|--|----------|---|
| Fig. 5  | Plan of all features                                 | Fig. 65  | Enclosures 14, 16 and 25 plan                 |
| Fig. 7  | Plan of Phase I                                      | Fig. 69  |   |
| Fig. 37 | Plan of Phase II                                     | Fig. 77  | Enclosure 26, feature 2442, plan and sections |
| Fig. 38 | Enclosure 1a, outer ditch and outer rampart sections | Fig. 83  | Plan of Phase III                             |
| Fig. 39 | Enclosure 1a, outer ditch and entrance sections      | Fig. 84  | Enclosure 1b, inner ditch, sections           |
| Fig. 43 | Enclosure 1a, inner ditch sections                   | Fig. 102 | Plan of Phase IV                              |
| Fig. 62 | Enclosure 13 and related features plan               | Fig. 106 | Feature 2949 section                          |

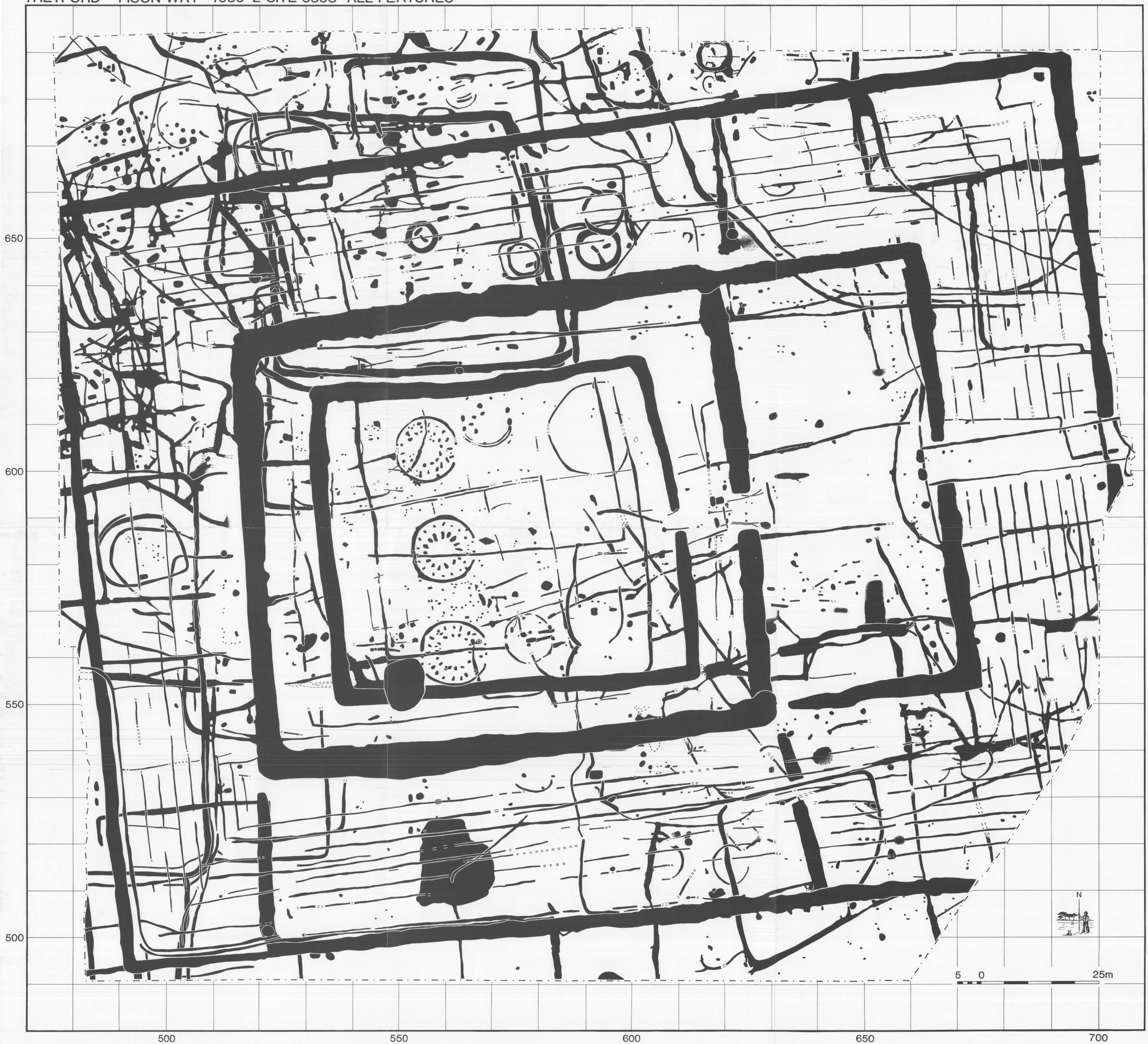


Fig. 5 Plan of main excavated area, all features; scale 1:500

THETFORD Fison Way 1980-2 Site 5853 Phase I

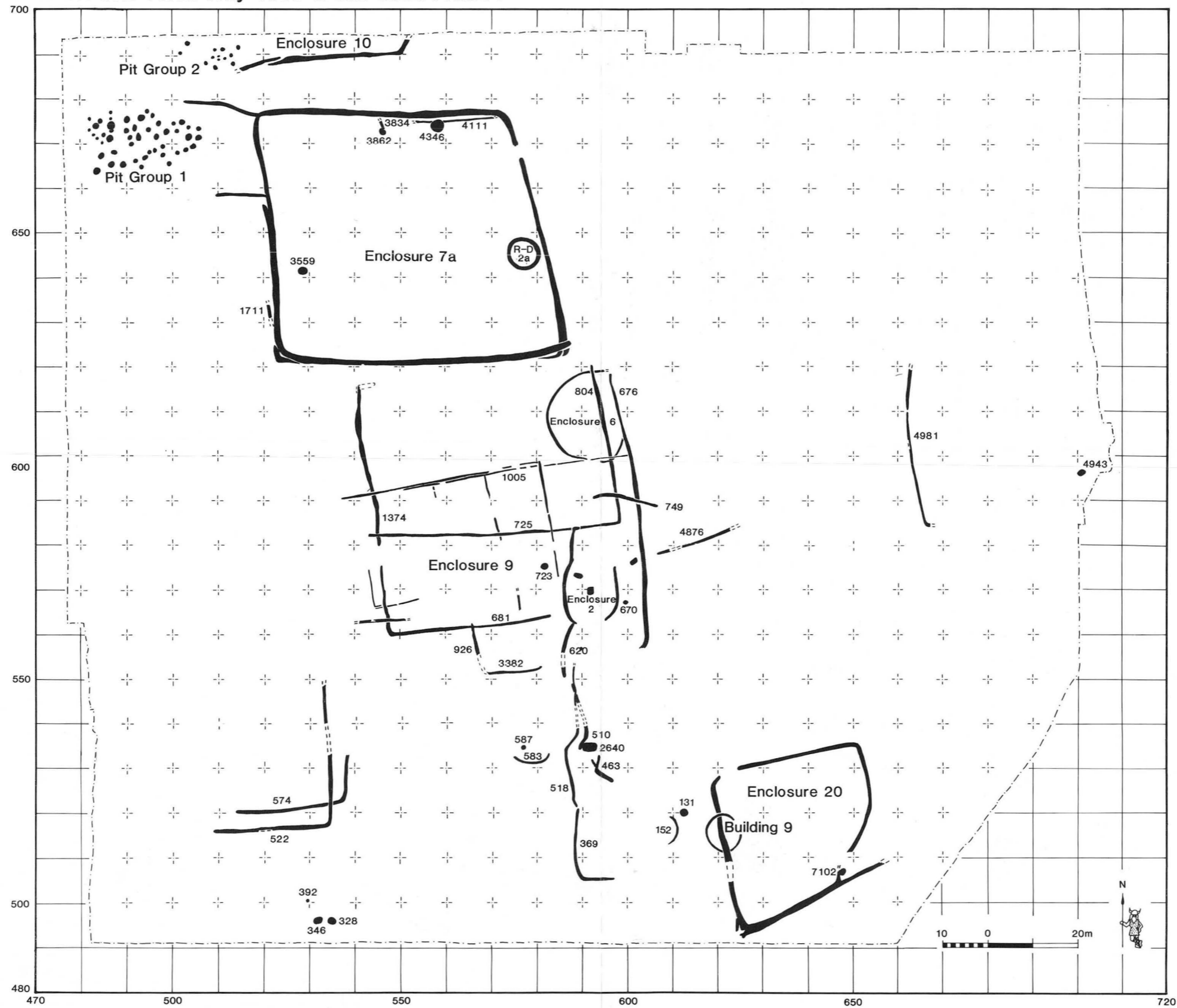


Fig. 7 Scale 1:1000

THETFORD - Fison Way 1980-2 Site 5853 Phase II

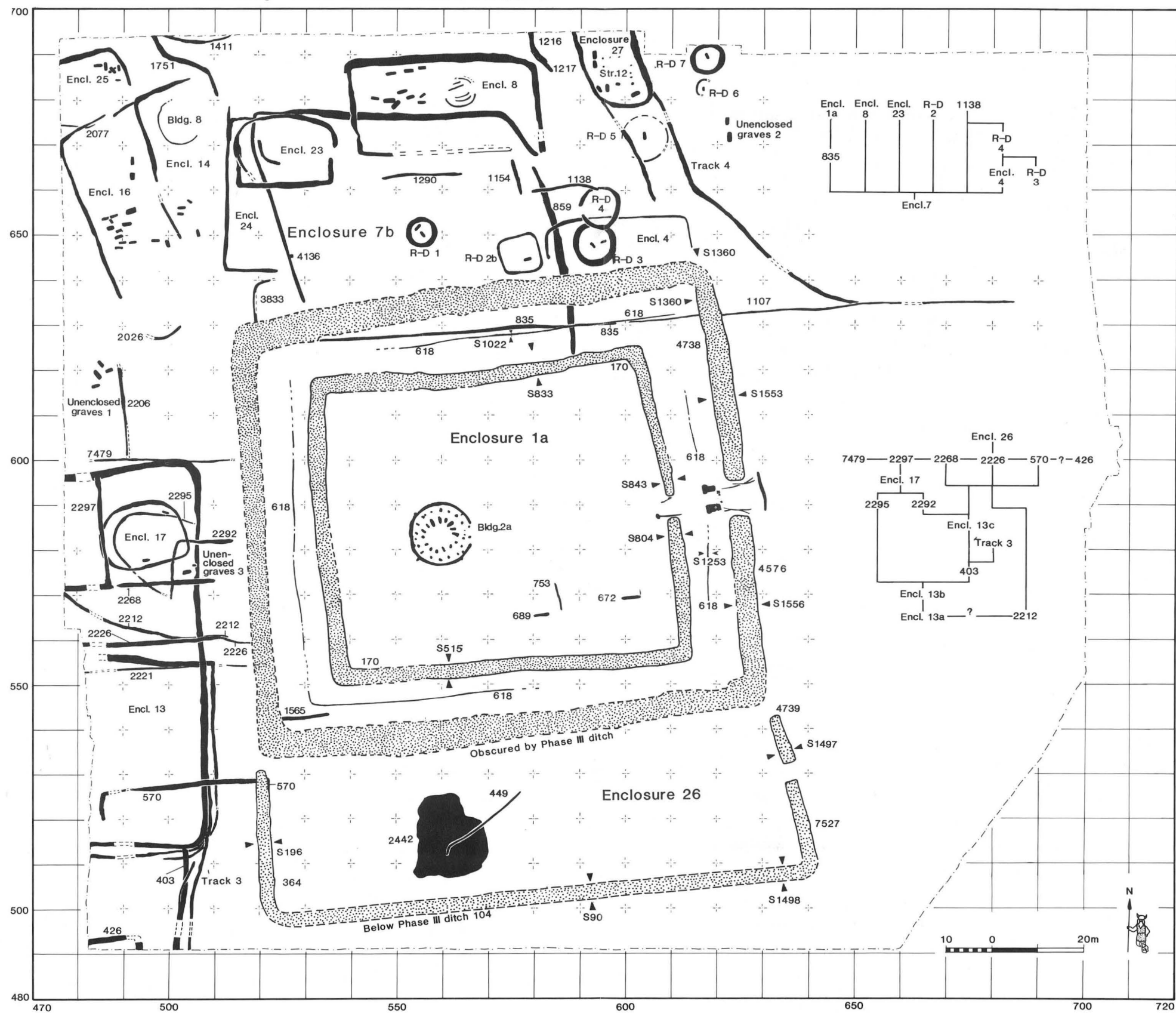


Fig. 37 Scale 1:1000

THETFORD - Fison Way 1980-2 Site 5853 Phase II Enclosure 1a Outer Ditch 4576/4738

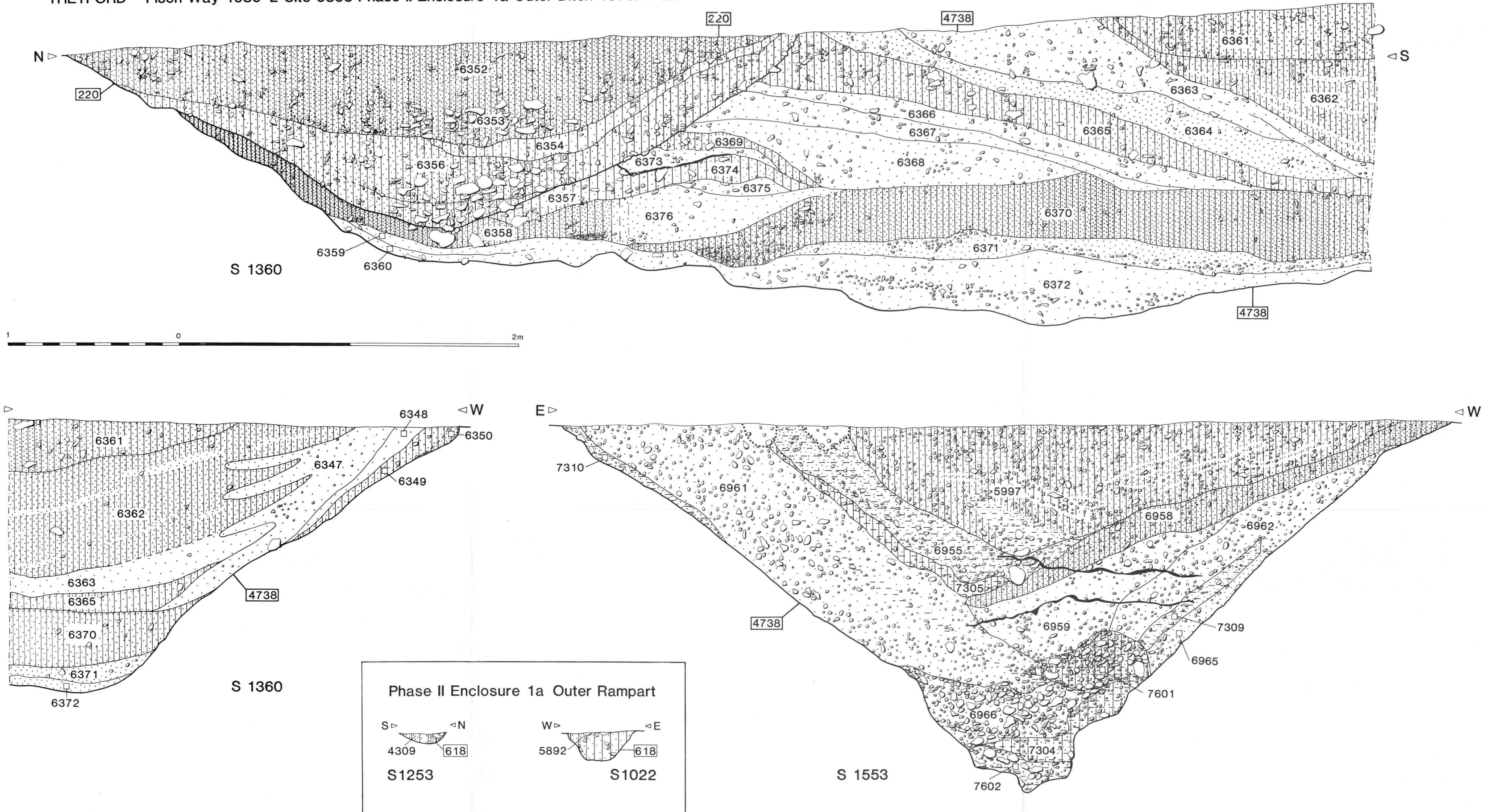
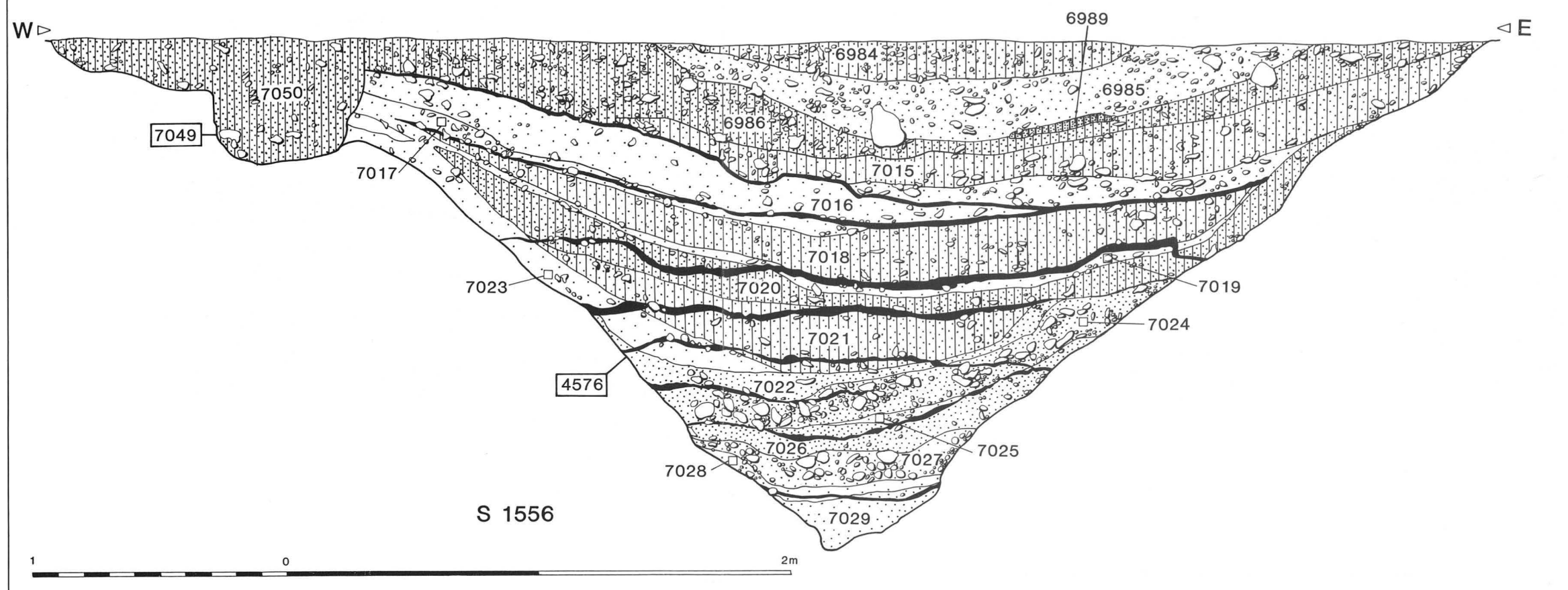


Fig. 38 Scale 1:20



THETFORD - Fison Way 1980-2 Site 5853 Phase II Enclosure 1a Outer Ditch 4576/4738



Phase II Enclosure 1a Entrance i

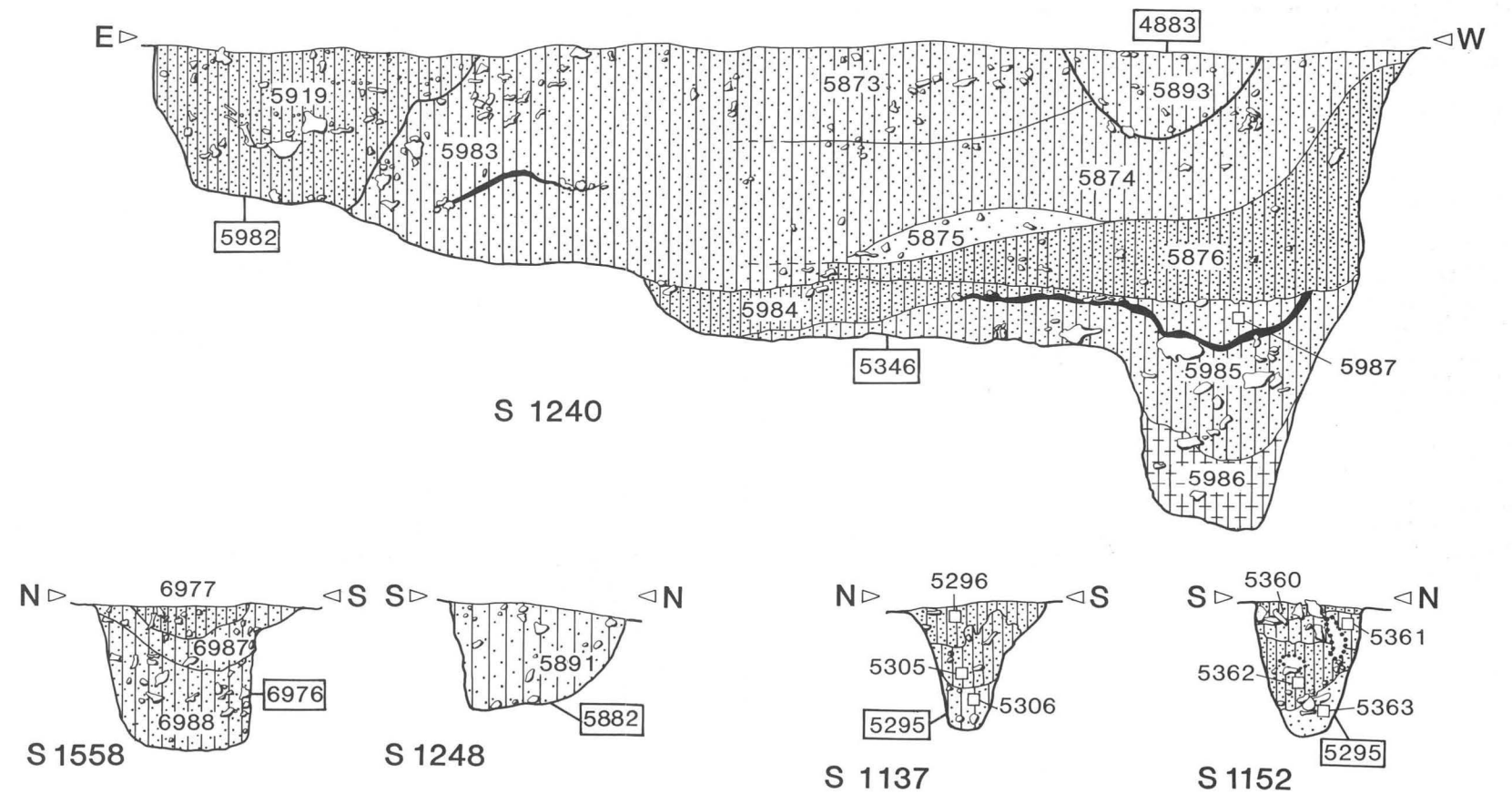
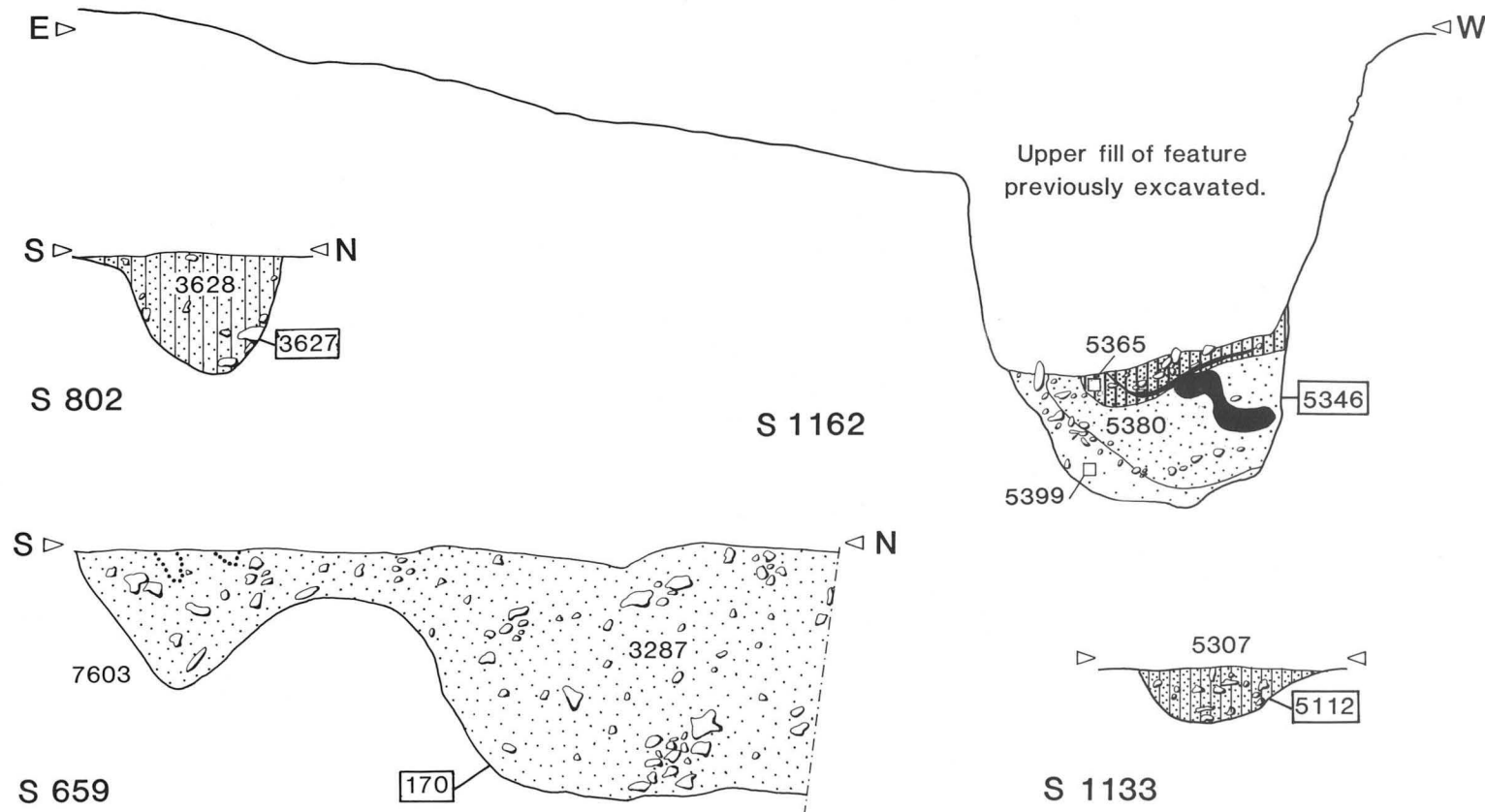
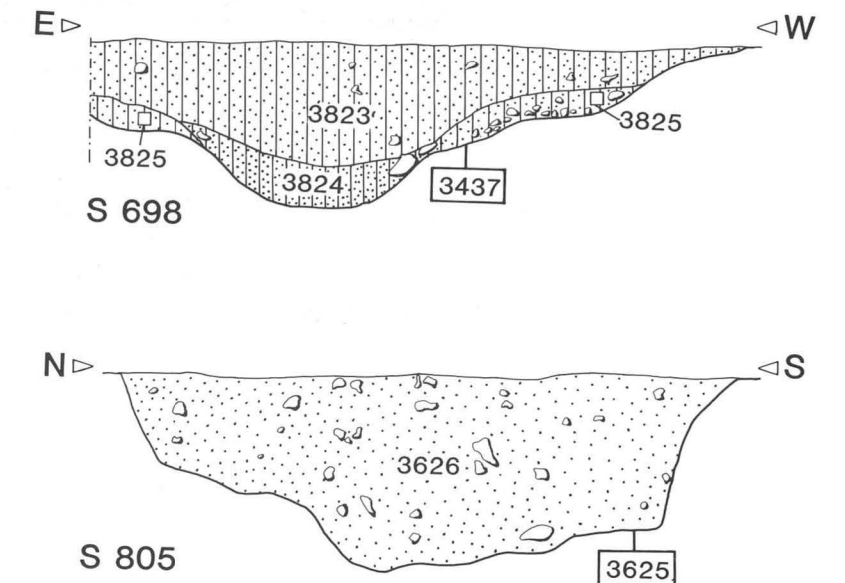


Fig. 39 Scale 1:20

THETFORD - Fison Way 1980-2 Phase II Enclosure 1a Inner Ditch 170

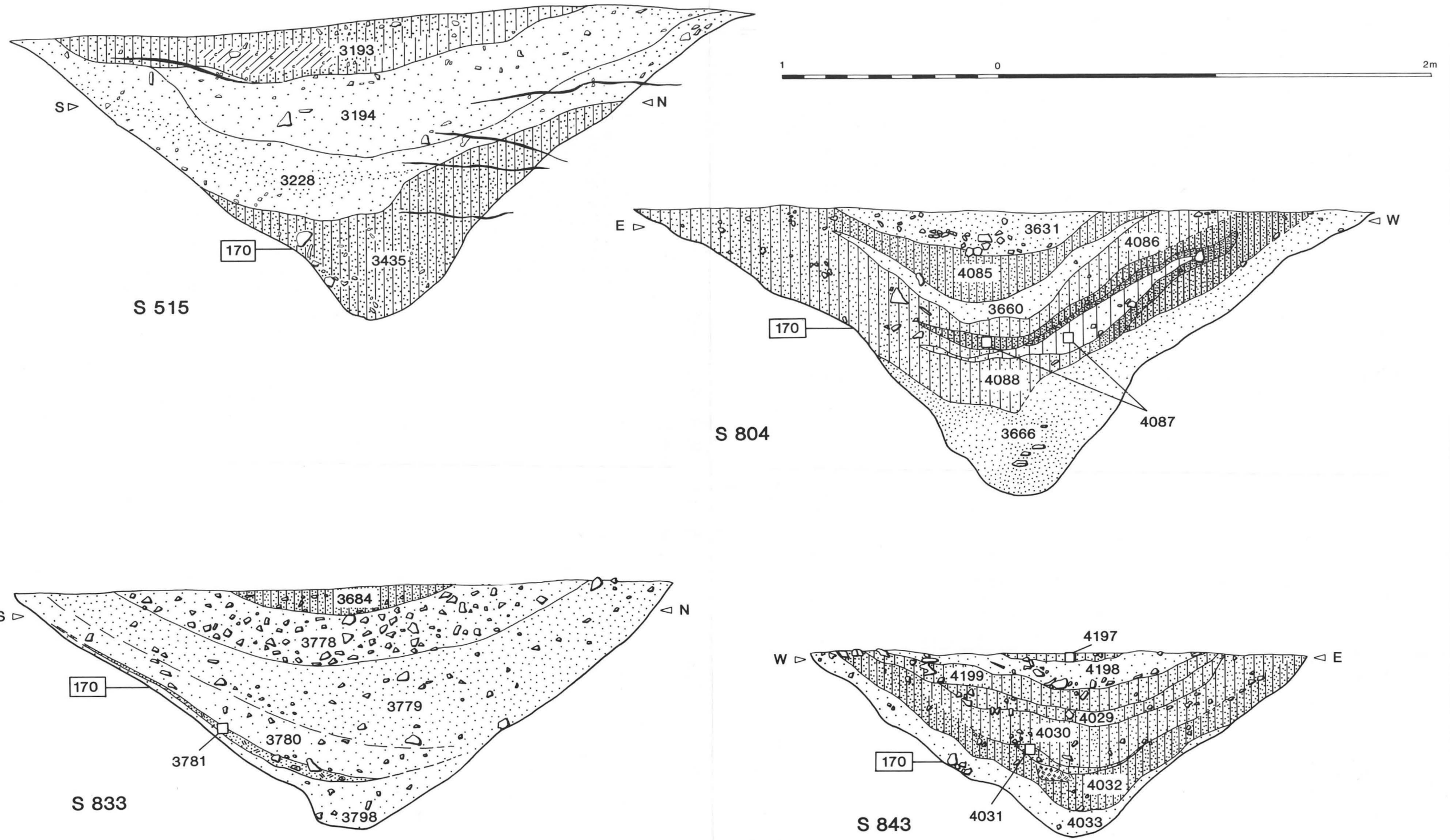


Fig. 43 Scale 1:20

THETFORD - Fison Way 1980-2 Site 5853 Phase II Enclosure 13 & related features

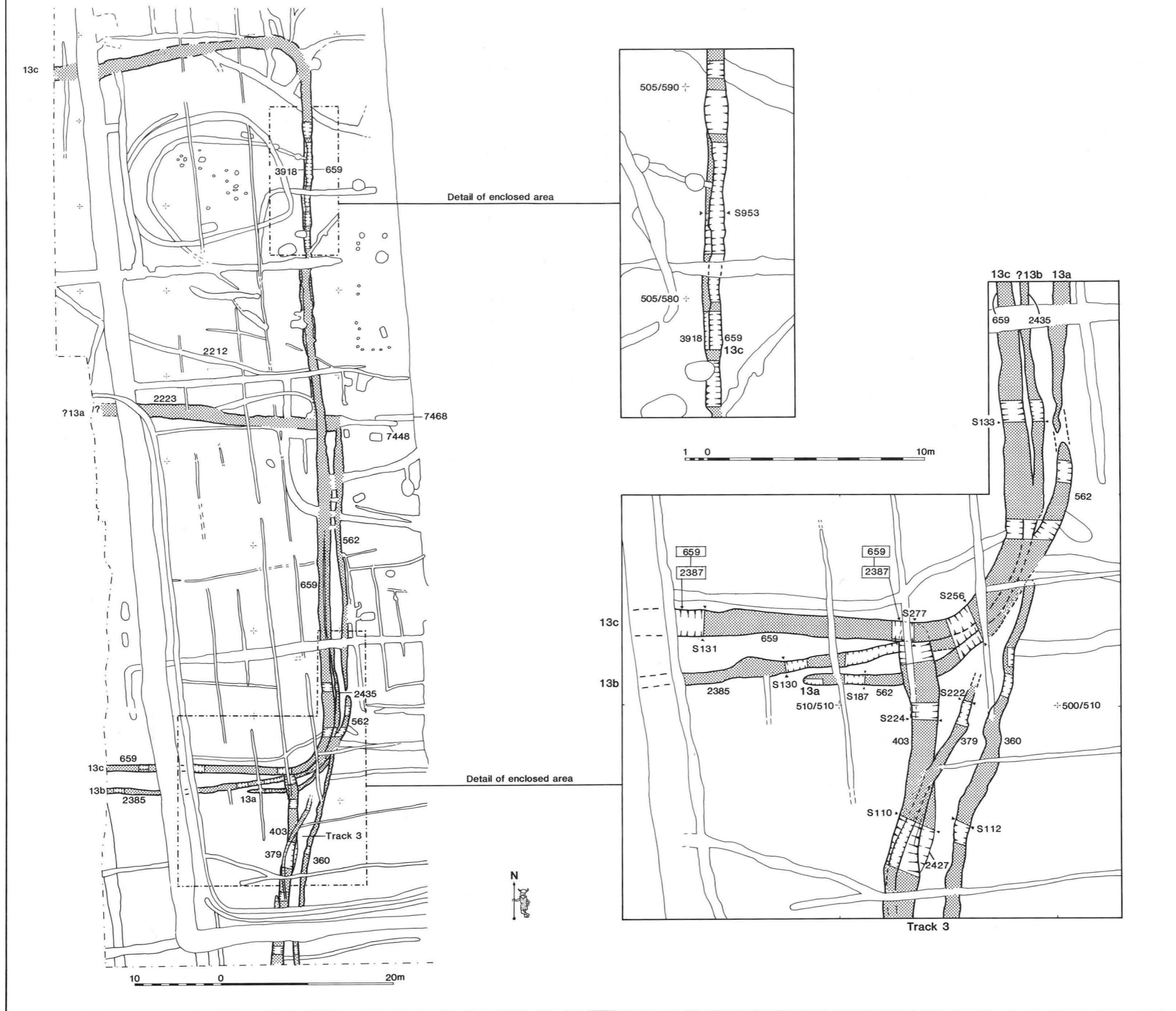


Fig. 62 Scales: main plan 1:500, details 1:200

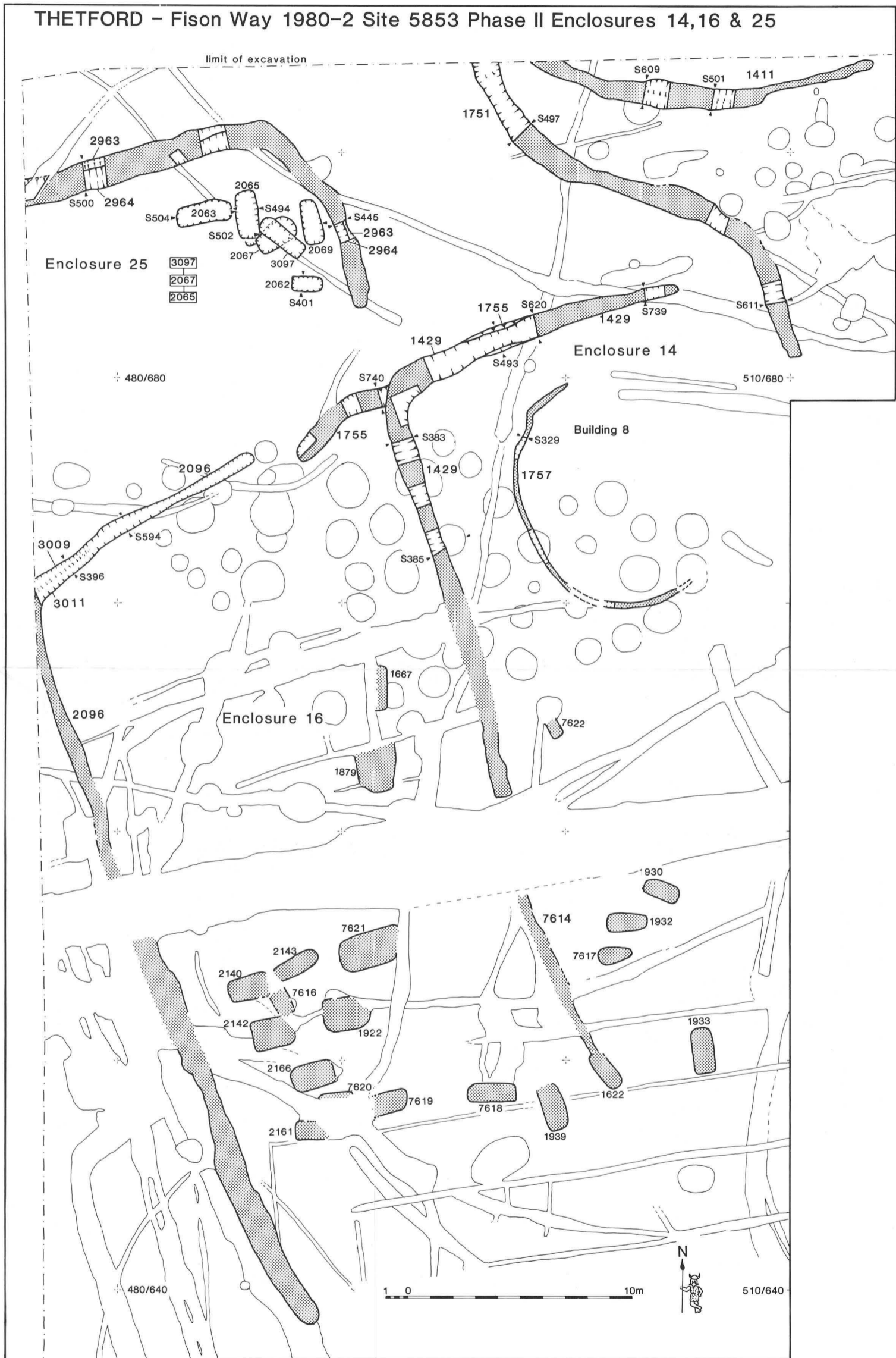


Fig. 65 Scale 1:200

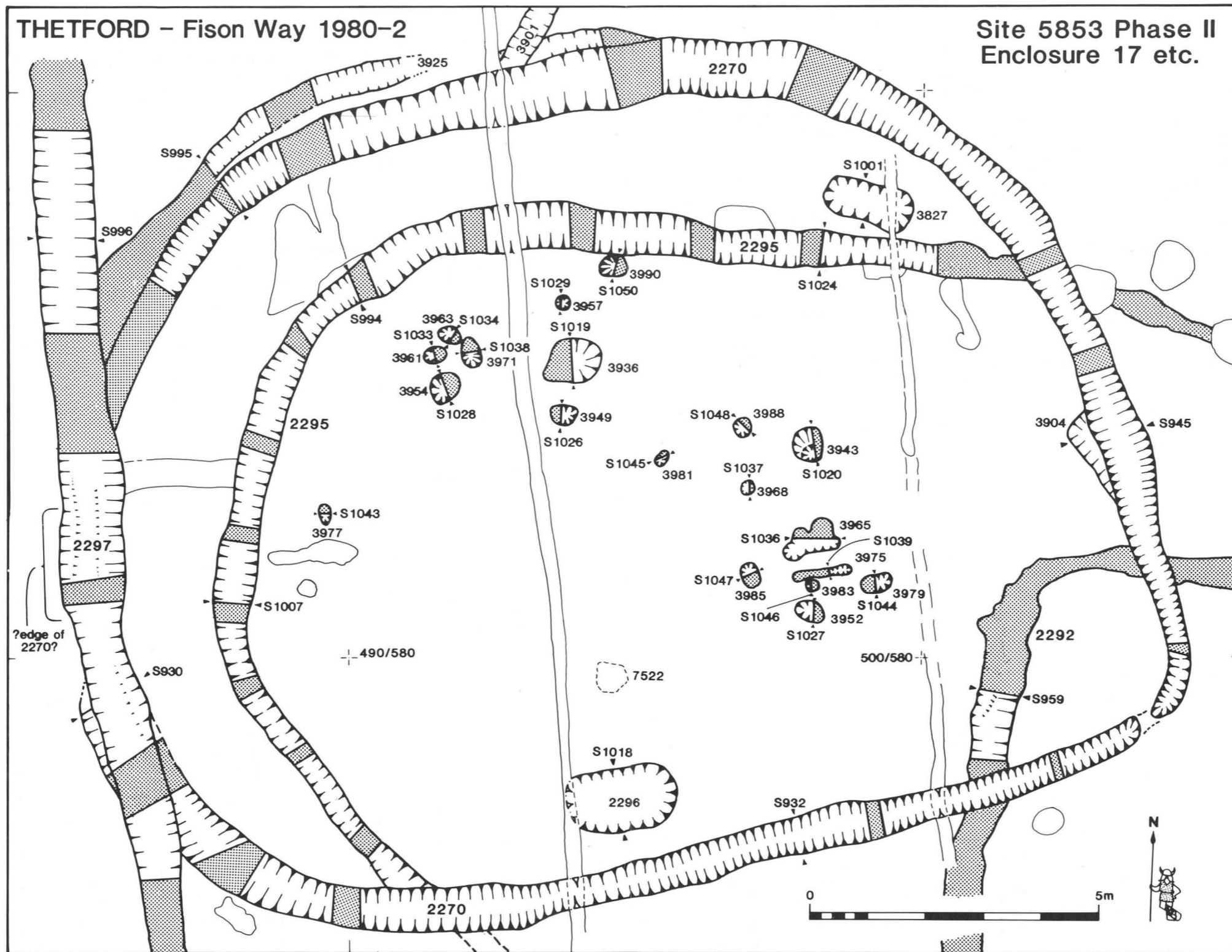


Fig. 69 Scale 1:100

THETFORD - Fison Way 1980-2 Site 5853  
 Phase II Enclosure 26 Feature 2442

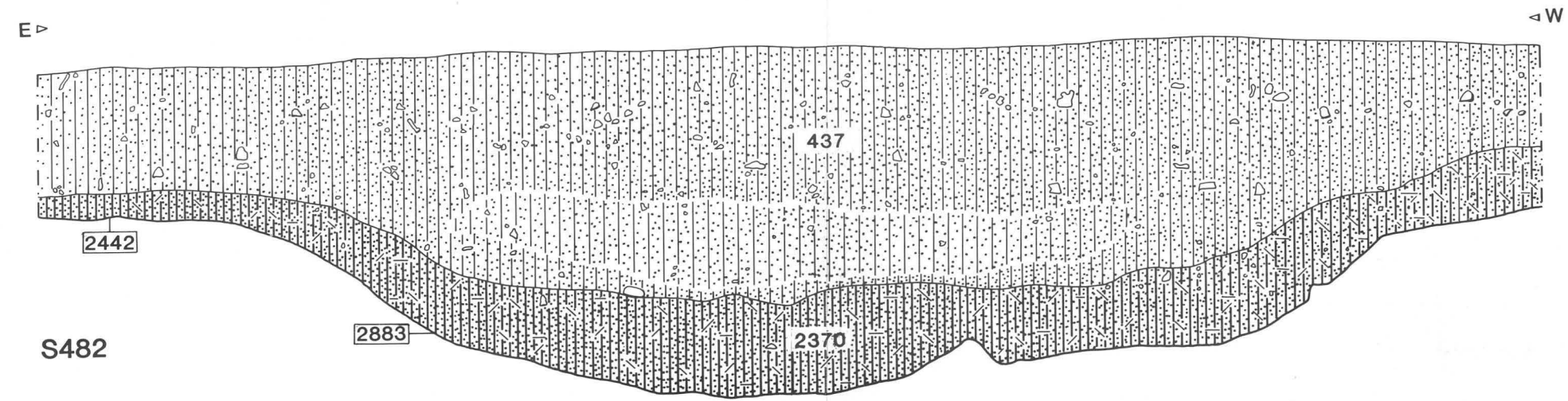
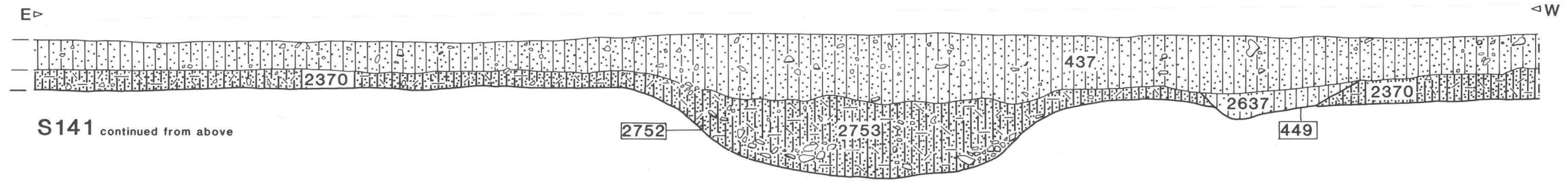
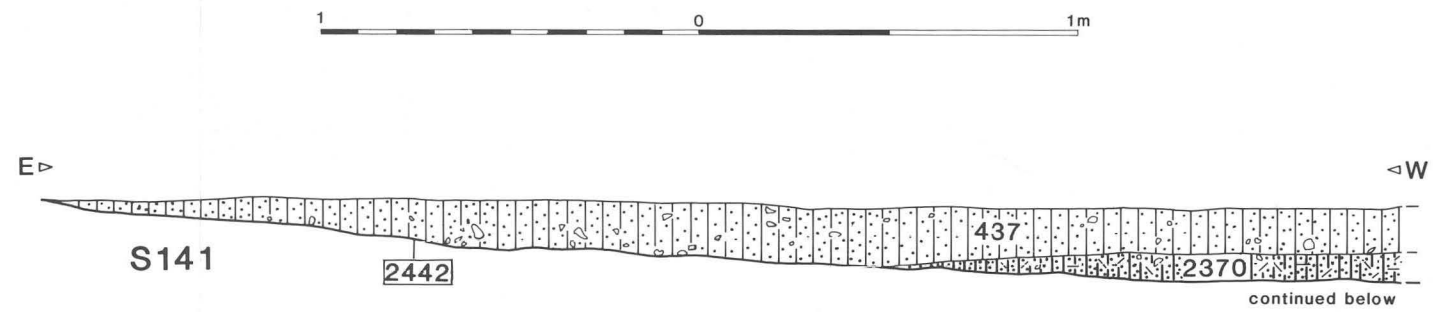
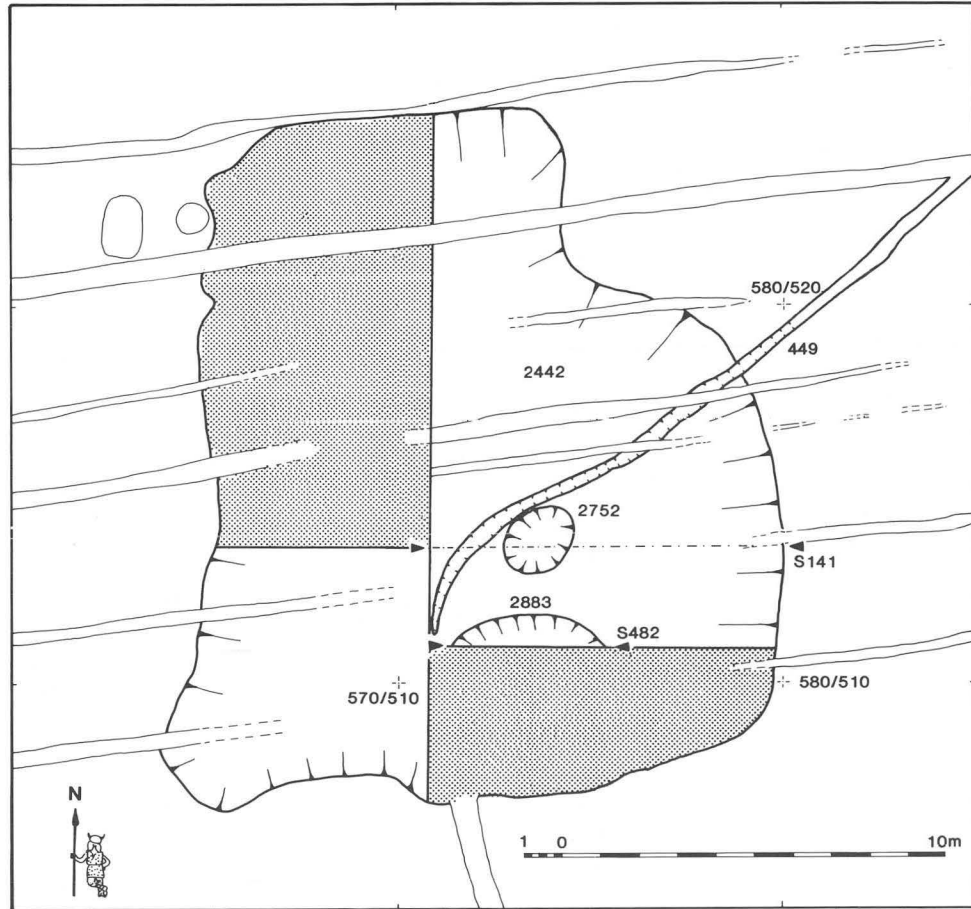


Fig. 77 Scales: plan 1:200, sections 1:20

THETFORD – Fison Way 1980-2 Site 5853 Phase III

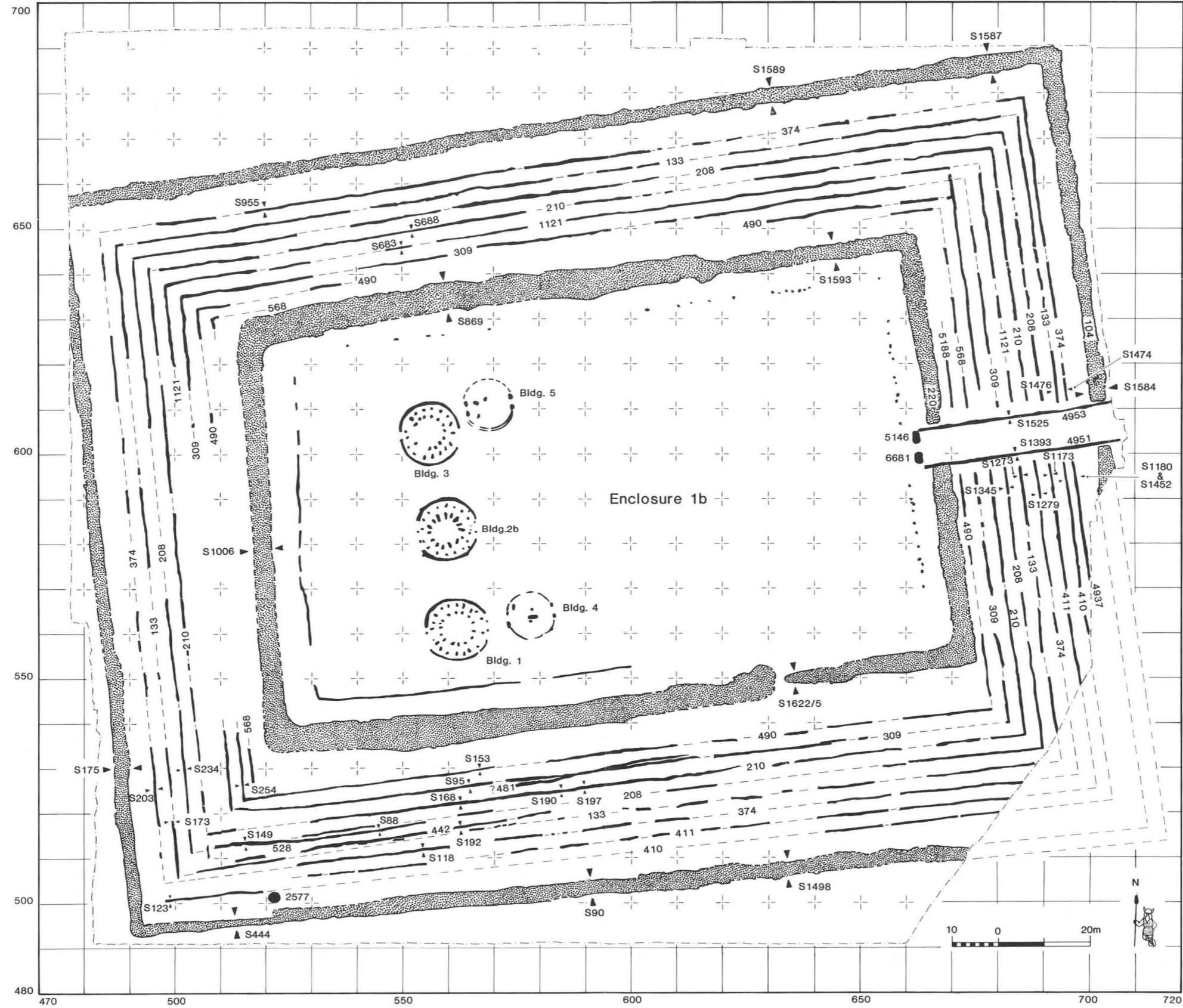


Fig. 83 Scale 1:1000

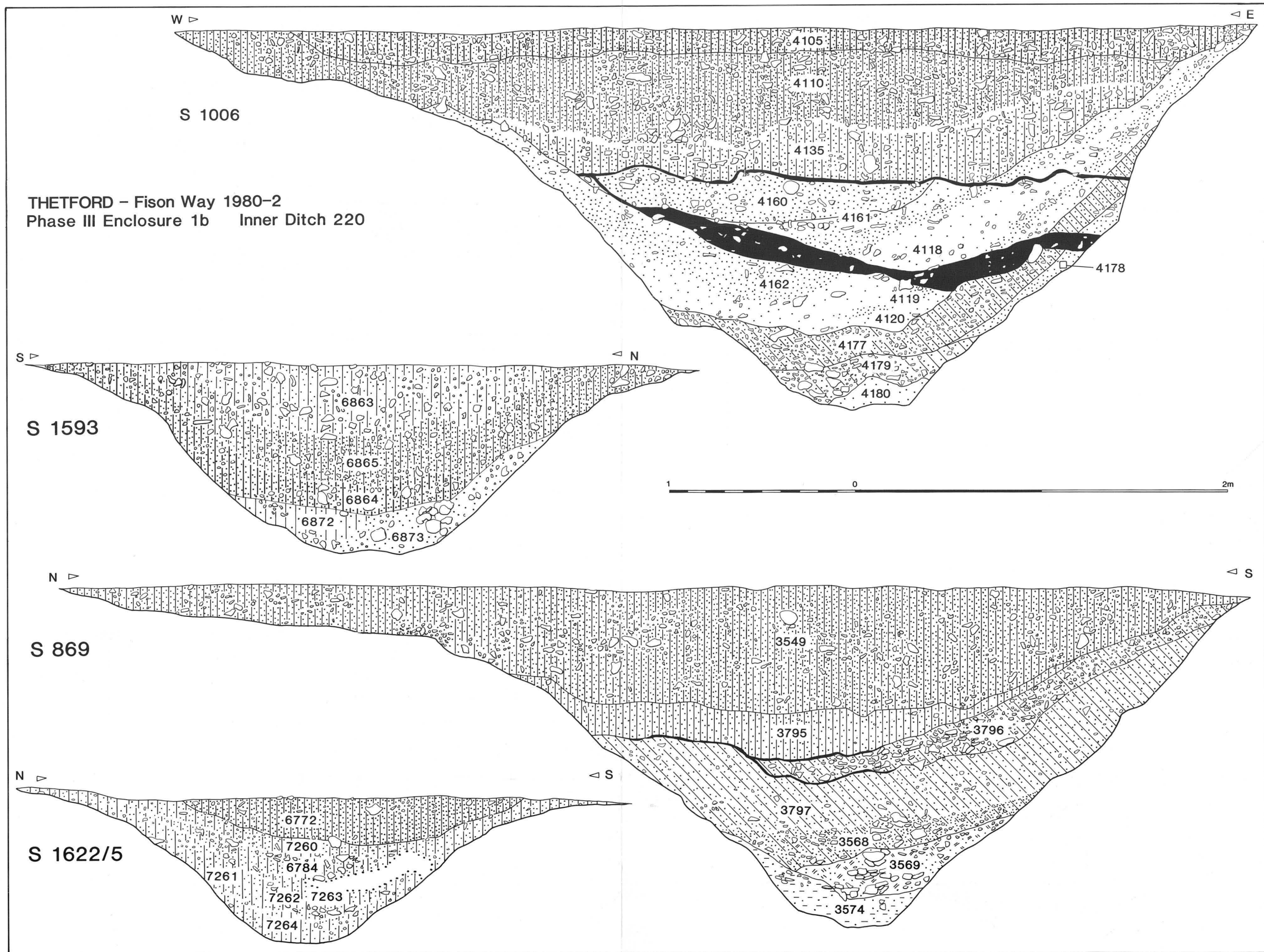


Fig. 84 Scale 1:20



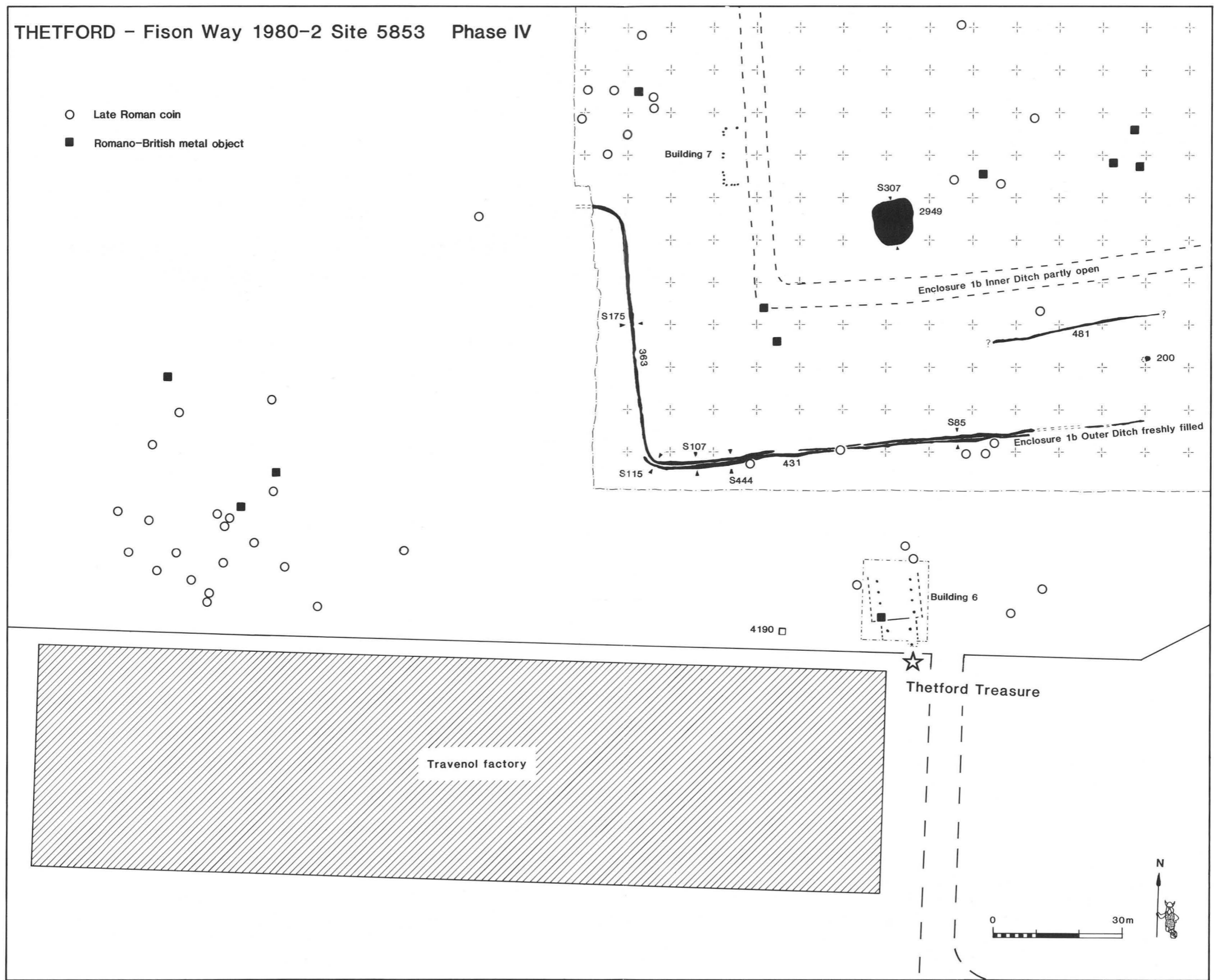


Fig. 102 Scale 1:1000

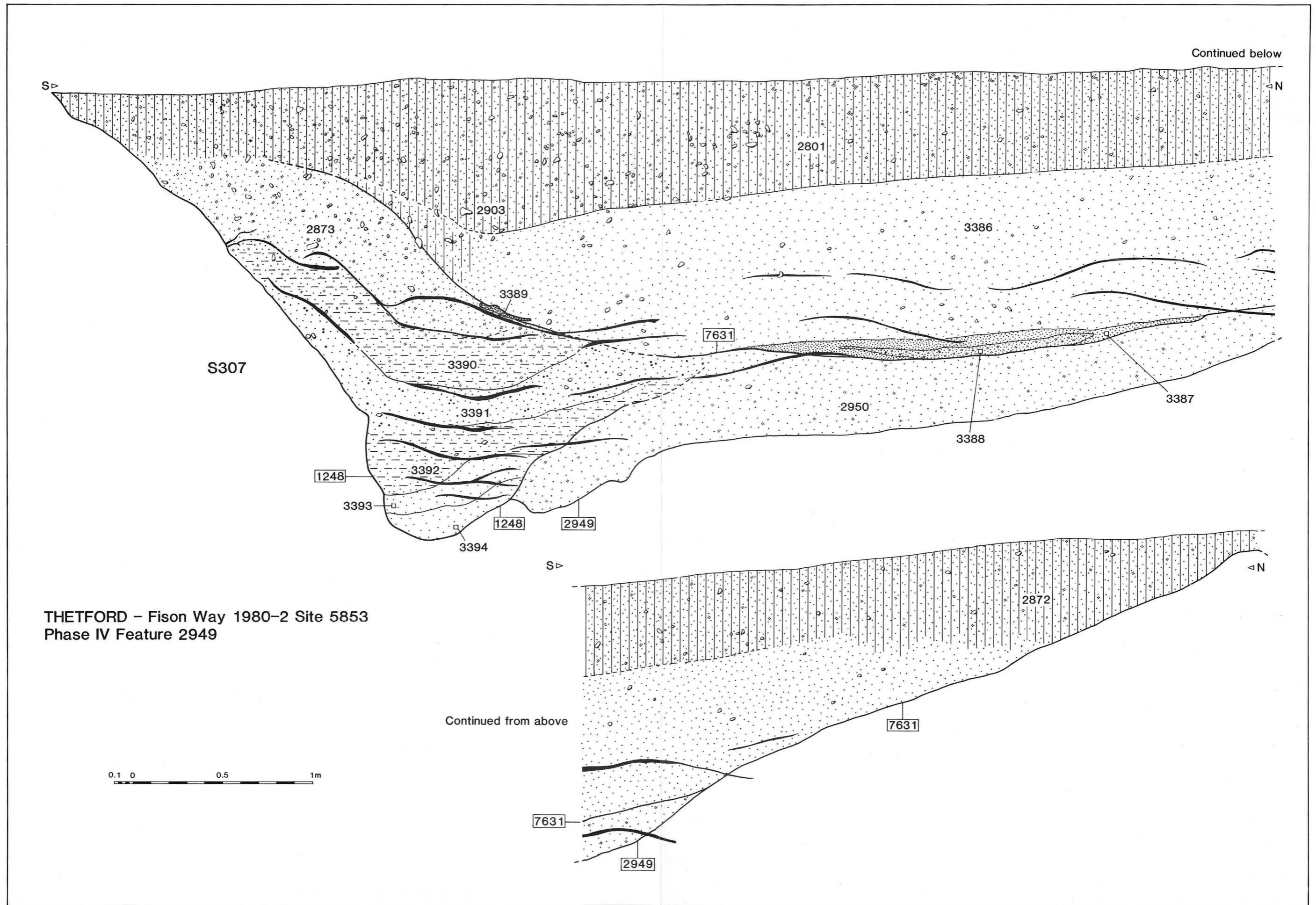


Fig. 107

---

# Contents

LARGE FIGURES

---

ISBN 0 905 594 05 3