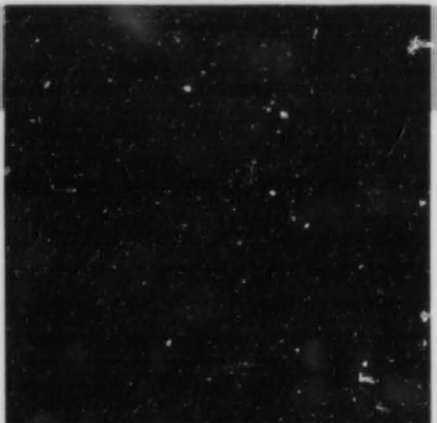
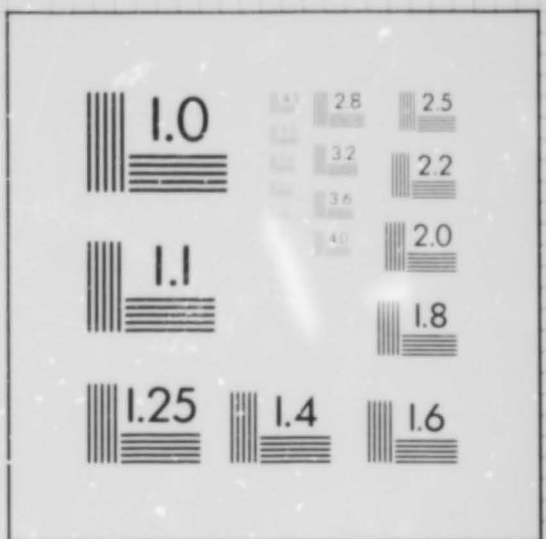


10 PT. ABCDEFGHIJKLMNOPQRSTUVWXYZ
 abcdefghijklmnopqrstuvwxyz
 1234567890

8 PT. ABCDEFGHIJKLMNOPQRSTUVWXYZ
 abcdefghijklmnopqrstuvwxyz1234567890

6 PT. ABCDEFGHIJKLMNOPQRSTUVWXYZ
 abcdefghijklmnopqrstuvwxyz1234567890

4 PT. ABCDEFGHIJKLMNOPQRSTUVWXYZ
 abcdefghijklmnopqrstuvwxyz1234567890



2.5 lp/mm

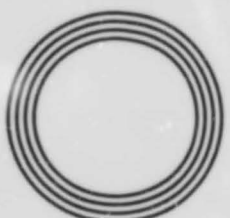
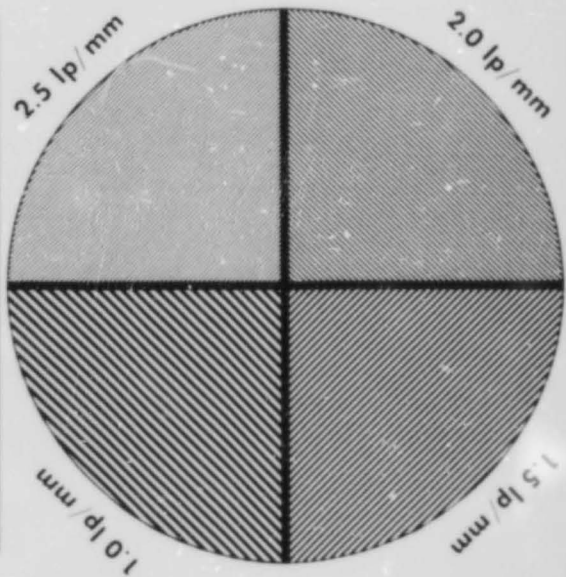
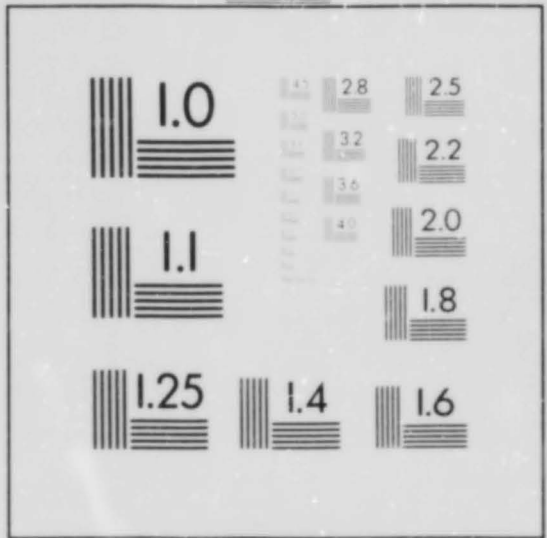
100mm

10 PT. ABCDEFGHIJKLMNOPQRSTUVWXYZ
 abcdefghijklmnopqrstuvwxyz
 1234567890

8 PT. ABCDEFGHIJKLMNOPQRSTUVWXYZ
 abcdefghijklmnopqrstuvwxyz1234567890

6 PT. ABCDEFGHIJKLMNOPQRSTUVWXYZ
 abcdefghijklmnopqrstuvwxyz1234567890

4 PT. ABCDEFGHIJKLMNOPQRSTUVWXYZ
 abcdefghijklmnopqrstuvwxyz1234567890



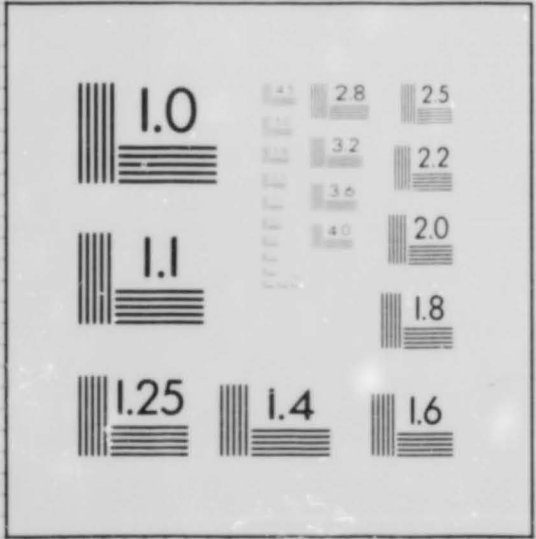
1.0 lp/mm



1.0 lp/mm



IMAGE SYSTEM TEST TARGET
 U.S. DEPARTMENT OF COMMERCE
 PATENT AND TRADEMARK OFFICE

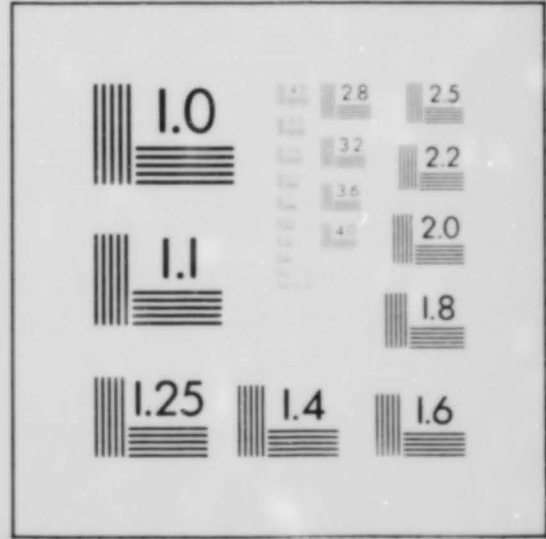


10 PT. ABCDEFGHIJKLMNOPQRSTUVWXYZ
 abcdefghijklmnopqrstuvwxyz
 1234567890

8 PT. ABCDEFGHIJKLMNOPQRSTUVWXYZ
 abcdefghijklmnopqrstuvwxyz1234567890

6 PT. ABCDEFGHIJKLMNOPQRSTUVWXYZ
 abcdefghijklmnopqrstuvwxyz1234567890

4 PT. ABCDEFGHIJKLMNOPQRSTUVWXYZ
 abcdefghijklmnopqrstuvwxyz1234567890



**The Fenland Project,
Number 6:
The South-western
Cambridgeshire Fenlands**

by David Hall

with contributions from
David Gurney, Robert Middleton and Rog Palmer

illustrations by
Rog Palmer and Tim Malim

and photographs by
David Hall and Cambridge
University Committee for
Aerial Photography

**East Anglian Archaeology
Report No. 56, 1992**

**Fenland Project Committee
Cambridgeshire County Council**

EAST ANGLIAN ARCHAEOLOGY
REPORT No. 56

Published by
Cambridgeshire Archaeological Committee
c/o Cambridgeshire Archaeology
Cambridgeshire County Council
Shire Hall
Cambridge

in conjunction with
The Fenland Project Committee and
The Scole Archaeological Committee Ltd

Editor: David Buckley
Managing Editor: Susie West

Scole Editorial Sub-Committee:
David Buckley, County Archaeologist, Essex Planning Department
Keith Wade, County Archaeological Officer, Suffolk Planning Department
Peter Wade-Martins, County Field Archaeologist, Norfolk Museums Service
Stanley West

Typeset in Plantin by Spire Origination, Norwich
Printed by

© CAMBRIDGESHIRE ARCHAEOLOGICAL
COMMITTEE 1992

ISBN 0 9519544 0 7

For details of *East Anglian Archaeology*, see last page

This volume is published with the aid of a grant from
the Historic Buildings and Monuments Commission for England

Cover illustration A blow in Holme Fen, taken from TL 2112 8810 looking west. Photo David Hall

Contents of Microfiche

Table of Contents	A4
Gazetteer 1 Sites and monuments record:	
Explanatory notes	A5
abbreviations	A6
The Gazetteer	A7
Gazetteer 2 Details of features mapped from aerial photographs:	
Explanatory notes	E1
abbreviations	E1
The Gazetteer	E2

GAZETTEER: EXPLANATORY NOTES

The gazetteer gives, in abbreviated form, data about sites found during the Fenland Survey as well as noting chance finds and earlier discoveries. Fuller details can be found in the Sites and Monuments Record for Cambridgeshire. The headings in the gazetteer are mostly self-explanatory, and these notes clarify the abbreviations used.

S Artefact concentrations and earthworks of archaeological significance are classed as conventional 'sites'. Each site is given a number in sequence of discovery or visit. Sites are distinguished in the gazetteer by the letter 'S'

U Lesser areas of significance, where evidence was poor at the time of the site visit, or different from normal field-surface data (such as artefacts cast out of a drain), are given a series of numbers prefixed by 'U'. This class has been used for sites previously reported but not assessed during the Survey, and for sites now destroyed.

A Significant artefacts, such as prehistoric axes, recovered as stray finds away from conventional sites are assigned a series of numbers prefixed with 'A'. This category may include finds previously recorded as well as those discovered during the Fenland Survey.

The Gazetteer is arranged by parish in alphabetical order. There are also notes placed at the beginning of each parish section, usually comprising items reported in the literature that have poor data. They were not entered into the full Fenland sites and monument system, which is a precise record of fieldwork data.

The finds have not been submitted for specialist reports except in the case of the Roman material which was examined by D.A. Gurney. Lithic finds were sorted and classified by P. W. Martin, and pottery of the Iron Age, Saxon and medieval periods was identified by the author.

ABBREVIATIONS

Column 3 Period

Pal	Palaeolithic	Sax	Saxon
Mes	Mesolithic	Med	Medieval
Neo	Neolithic	PM	Post-medieval
Preh	Prehistoric	?	Uncertain date
BA	Bronze Age		
IA	Iron Age		
Bel	Belgic (Late Iron Age)		
RB	Romano-British		

Column 4 Type

Arrowh	Arrowhed	Pot	Pottery find
Cem	Cemetery	Palst	Palstave
DMV	Deserted medieval vill	Salt	Saltern
Encl	Enclosure	SA/SE	Saltern and settlement
Fld S	Field system	SMV	Shrunken medieval village
FS	Flint scatter	Sett	Settlement
Monast	Monastic	Ring d	Ring ditch

Column 5 Soil / geology

Boulldr cly	Boulder clay (Till)	Juras cly	Jurassic Clay
Cly/grav	Clayey gravel	Ox cly	Oxford Clay
Glac grav	Glacial gravel	Riv grav	River & Fen gravel
Grav/clay	Gravel and clay	Silt	Marine silt (IA)

Chatteris

Palaeolithic

TL 44 87 Unlocated ovate flint, cortex removed, glossy black with little patination; from 'near Fox's Drove SE of Honey Hill' (Baden Powell *Proc. Prehist. Soc.* 16 (1950) 29-41).

Neolithic

TL 43 85 Polished axe 28cm long made from Borrowdale volcanic series; found in Langwood area, formerly in collection of F. M. Walker of Manea (in Wisbech Museum, Clough and Green *Proc. Prehist. Soc.*, 38 (1972) 108-56).

TL 39 86 Stone axe made of dolomite, location unknown; another made of rhyolite in the Ashmolean Museum (*PPS* 38 (1972) 108-56).

TL 379 879 Flint implements found in 1924 (OS).

TL 381 876 Polished Langdale stone axe (D. Stone, *CBA Group 7 Bulletin* 14 (1967) 1).

TL 442 888 Polished flint axe found at Honey Hill (D. Stone, *CBA Group 7 Bulletin* 16 (1969) 2).

TL 375 871 Polished flint axe (*CBA Group 7 Bulletin* 14 (1967) 1).

TL 396 841 Stone axe found 'at Wood Farm' (OS).

TL 40 82 Flint axe and stone (Langdale?) axe from 'Horselode Farm' (D. Stone, *CBA group 7 Bulletin* 14 (1967) 1).

Bronze Age

TL 38 88 Middle Bronze Age spearhead, leaf-shaped blade with pronounced central rib, socket with two side loops. From Carter's Bridge, bought in 1892 (Peterborough Museum L668).

TL 442 862 Bronze spearhead found by a Mr. Walker (Cambs. County Council Archaeology).

TL 43 85 Unlocated shield 61cm diam. decorated with concentric rings of close set knobs divided by plain fillets. Found with socketed bronze spear head; at Chatteris in 1870 (*PCAS* 16 (1911) 11). Later recorded as from the Langwood area; the objects are in the Cambridge University Museum (accession nos. 910,230 (axe) and 1910,111; Salzman 1938, 278-9, 310 (illus.); M.A. Brown and A.E. Blin Stoye *Proc. Prehist. Soc.*, 25 (1959) 6. 188-2; J.M. Coles *idem*, 28 (1962) 8, 156-190.

- TL 39 85 Unlocated, bronze rapier found in the bottom of a dug-out canoe 'over clay and under peat'. Rapier now at the Ashmolean Museum accession. no. 1927, 2353 Salzman (1938) 276; J. Evans *Ancient Bronze Implements of Great Britain* 1881, 250-1; B.A.V. Trump *Fenland Rapiers*, 222-3).
- TL 428 825 Tanged bronze dagger 18.5 cm long found in 1960 by ploughing. Exact location unknown (*CBA Group 7 Bulletin* 7 (1960) 3; Chatteris Museum record 1982,1).
- TL 405 852 and TL 416 847 Barbed and tanged flint arrowheads and stone axe hammer (D. Stone, *CBA group 7 Bulletin* 16 (1979) 2).
- TL 421 858 Looped socketed bronze axe with three parallel ribs below the collar (Chatteris Museum record 1963, 2).
- TL 418 864 Looped socketed bronze axe at approximately this reference 'east of New Road' (Chatteris Museum record 1963, 117).
- TL 416 848 Looped palstave with trident mark below stopridge on both sides of the blade, approximate NGR (Chatteris Museum record 1963, 2).
- TL 384 790 Looped palstave with three parallel ribs below stopridge 'from Holwood' (Chatteris Museum record 1963, 2).
- TL 38 79 Unprovenanced small flat bronze axe found 'in Chatteris fen' in 1820s. EBA and possibly Irish (CUMAE, Acc. No. 63, 1771; *PCAS* 56-7 (1963-4) 5).

Medieval

- TL 384 837 to TL 384 790 Ten net sinkers made by piercing a hole through rough pieces of limestone (Chatteris Museum record 1963, 48. 61).

GAZETTEER OF SITES AND FINDS

No	Grid Ref	Period	Type	Geology	Height (m OD)	Area (ha)
S 1	TL43358909	BA	Encl	Glac Grav	4.0	1.00
<p>NOTES: OS map marks 5 mounds no longer visible. A large D-shaped enclosure formed by a ploughed-over rampart, probably pre-historic. A few worked Bronze Age flints. Small ring ditches (not on sites of OS mounds) and linear ditch (see Hall Fenland vol. 2, Gazetteer 2 for AP and comments).</p>						
S 2	TL44288819	RB	Sett	Glac Grav	4.0	0.04
<p>NOTES: Dark occupation area with fire-cracked pebbles and a few sherds.</p>						
S 3	TL44048830	RB	Sett	Clyey Grav	4.5	0.80
<p>NOTES: Large Roman settlement. Dark occupation area with piece of quernstone and sherds that include samian and colour-coated wares. This is the central site and Chatteris 2 and 7 are probably outliers. Single sherd at TL 438 885 and 3 sherds at TL 442 884.</p>						
S 4	TL43358830	Med	Sett	Clyey Grav	4.5	0.04
<p>NOTES: Dark occupation area with large quantities of 14-15th century and post-medieval sherds. Possibly the site of the manor at Honey Hill belonging to the Wendy family in the 16th century (Pugh 1953, 104-6 (VCH Cambs. 4)).</p>						
S 5	TL43208838	IA	Sett	Glac Grav	4.5	0.04
<p>NOTES: Iron Age and medieval sherds and 2 of either Belgic or Roman date. Low areas adjacent are probably undated quarries or 'working areas'. A suggestion of linear paddock boundaries running into the field to the north. APs (CUCAP) show paddock/ field system and droves (Hall Fenland vol. 2, Appendix 2).</p>						
S 6	TL43648805	BA	Barrow	Glac Grav	4.0	0.10
<p>NOTES: Bronze Age barrow, Scheduled Monument SAM 24. Ploughed-over mound 30m diameter and 1.5m high surrounded by a dark annulus of the ditch. Burnt area in the middle from which parts of 3 small vessels were recovered. Fox (1923) describes it as 'an undisturbed ditched mound...in a field of old pasture'. Site still grass in 1950 (OS).</p>						
S 7	TL43748813	RB	Sett	Glac Grav	4.0	0.15
<p>NOTES: Dark occupation area with sherds.</p>						
S 8	TL43538855	RB	Sett	Glac Grav	4.5	1.00
<p>NOTES: Roman paddocks and settlement in good state of preservation, ploughed in 1972. House site visible as a dark area with a lot of sherds (samian and colour-coated). The paddocks are dark also, but a different hue: their boundaries are still visible as low banks of light hue running along the sides of ditches. AP; CUCAP CBT 64-6 and 68-70.</p>						

GAZETTEER OF SITES AND FINDS

No	Grid Ref	Period	Type	Geology	Height (m OD)	Area (ha)
S 9	TL43228874	RB	Sett	Glac Grav	4.0	0.01
NOTES:One Iron Age sherd along with Roman and medieval material.						
S10	TL43838815	IA	Sett	Glac Grav	4.0	2.50
NOTES:A large Early Iron Age site with dark occupation and an abundance of sherds, bone and burnt pebbles. A piece of saddle quern and a pottery spindle whorl. Many of the sherds are decorated and some may be Late Bronze Age. Complex network of low ramparts and field banks ploughed out as soil marks.						
S11	TL42028602	BA	F S	Glac Grav	4.0	0.50
NOTES:Worked flints and fire-cracked flints of probable Bronze Age date.						
S12	TL42038560	IA	Encl	Glac Grav	3.3	3.00
NOTES:No finds, probably related to CHA S26 to the south. Linear ditches and possible enclosure (periglacial?); ridge and furrow traces. See Hall, Fenland Vol 2 Figure 54.						
S13	TL42278564	IA	Sett	Glac Grav	3.5	1.50
NOTES:Only post-medieval finds. Aerial photographs show a complex of light soil marks (banks?). A dubious archaeological feature. If real may relate to site 26; for large scale plot see Figure 54 in Hall Fenland Vol 2 (EAA).						
S14	TL41358535	Pre	F S	Glac Grav	3.4	0.70
NOTES:Flints were the only finds.						
S15	TL43368835	BA	Barrow	Clyey Grav	4.5	0.10
NOTES:Mound 20m diameter and 1.8m high cut by modern hedge on NW. A few flints, not likely to represent occupation. Post-medieval and plaster on the top; marked on OS.						
S16	TL43458843	BA	Barrow	Glac Grav	4.5	0.10
NOTES:A large circular mound about 1.5m high and 20m diameter. Many skeletons lying EW being ploughed out. No grave goods, they are probably Roman, there are a few dark areas and pieces of Roman tile near the mound.						

GAZETTEER OF SITES AND FINDS

No	Grid Ref	Period	Type	Geology	Height (m OD)	Area (ha)
S17	TL43608380	BA	Barrow	Glac Grav	1.2	0.06
<p>NOTES: Two mounds, NGR given is as marked on OS, the other mound at TL 4372 8376. (i) 20m diameter and 10cm high and (ii) is 20 m diameter and 0.5m high. Both mounds have now nearly disappeared and survive as light coloured patches. AP; CUCAP BIT 63-5. Fowler (OS correspondent 1949) notes that field was called battleground because of weapons and bones found.</p>						
S18	TL43118308	BA	Barrow	Sandy Grav	1.2	0.10
<p>NOTES: Three barrows, NGR given is the Scheduled Monument 24, (i) 10 cm high and 23m diameter; (ii) TL 4314 8310 with the same dimensions; (iii) TL 4313 8316 10cm high, 18m diameter. Very slight mounds visible as light coloured soil marks, not worth scheduling; marked on OS map but not accurately. Three ring ditches, AP CUCAP M78; LE 63-5; NH 10; see Vol 2 App 2.</p>						
S19	TL43758544	BA	Barrow	Glac Grav	1.2	0.00
<p>NOTES: No finds, 9m diameter and 0.2m high. A small, badly damaged barrow, see site 30.</p>						
S20	TL44354811	BA	Barrow	Glac Grav	0.9	0.00
<p>NOTES: No finds, 9m diameter, 0.2m high.</p>						
S21	TL44198390	BA	F S	Glac Grav	0.9	0.00
<p>NOTES: One sherd of pottery and a few flints, but no fire-cracked flint. Not like a settlement; an activity related to the barrows possibly.</p>						
S22	TL42808390	Pre	Other S	Grav Cly	1.8	5.00
<p>NOTES: No finds except background flints. Cropmarks of parallel driveway and field/paddock traces: probably links with site CHA 23 to make an extensive system. AP: CUCAP; XR 72-3; RC8-DC 108-9; RC8-M 173-4.</p>						
S23	TL42008470	Pre	Other S	Grav Cly	2.7	6.00
<p>NOTES: No finds except background flints. Cropmarks of paddock traces, superimposed with linear bank/ditch; probably links with CHA site 22. See Appendix 2 for AP numbers (V2). Looped palstave found near 'Wenny Farm' (Chatteris Museum record 1963, 2).</p>						
S24	TL41308495	IA	Sett	Glac Grav	3.9	0.20
<p>NOTES: Dark occupation area with sherds.</p>						

GAZETTEER OF SITES AND FINDS

No	Grid Ref	Period	Type	Geology	Height (m OD)	Area (ha)
S25	TL41458541	IA	Sett	Glac Grav	3.6	0.80
NOTES: Dark occupation area with Early Iron Age sherds, Belgic sherds and burnt stone. Roman also.						
S25	TL41458541	RB	Sett	Glac Grav	3.6	0.80
NOTES: Dark occupation area with burnt stone, colour-coated sherds and a piece of quern. Iron Age also.						
S26	TL41738530	IA	Sett	Glac Grav	3.6	10.00
NOTES: A large site with dark area containing burnt stone, bone, and many early sherds. Collection made from NE TL 4185 8574 IA, NW TL 4174 8540 IA, W TL 4163 8528 RB, S TL 4182 8512, centre as NGR and SE TL 4183 8514. Belgic and burnished sherds, a pottery spindle whorl. Roman also. Metal detected in 1981-3; part of BA axe & Icenian coins.						
S26	TL41738530	RB	Sett	Glac Grav	3.6	0.16
NOTES: Dark area with bone and burnt stone. Iron Age also, pottery collection reference on IA record. Metal detector finds 224 copper coins of 1st to 4th centuries (viewed at CUMAE; Chatteris Museum Society 2,32). Many other finds see CCC S&M record nos 111-5.						
S27	TL39288404	PM	Other S	Grav Cly	4.5	0.16
NOTES: Wood house site. Part brick and part stone in garden with E=W gravel terraces. Pottery of c1600-1900. A kiln area 90 by 20m at TL 3917 8397 (3.9m OD); probably made the house bricks. See Salzman 1948, 22 (VCH Cambs 2). Area given is of the house, the gardens are much larger.						
S28	TL39778470	BA	Sett	Clyey Grav	9.1	0.20
NOTES: Sherds, a few flints including a scraper, fire-cracked flint. Are some sherds Saxon? Poor conditions - needs looking at again.						
S29	TL40158466	RB	Sett	Boulldr Cly	3.0	0.80
NOTES: Partly covered by alluvium. Dark area with burnt stone, pebbles and bone. Sherds range from Belgic to Samian and colour-coated wares; most came from SE. Pieces of Millstone Grit & Hertfordshire quern. A dark area at NE, TL 4010 8474.						
S29	TL40158466	Bel	Sett	Boulldr Cly	3.0	0.80
NOTES: Roman also, for notes see IA record.						

GAZETTEER OF SITES AND FINDS

No	Grid Ref	Period	Type	Geology	Height (m OD)	Area (ha)
S30	TL43608556	BA	Barrow	Grav Cly	1.2	0.03
<p>NOTES: Yellow mound of gravelly subsoil, 21m diam., 0.5m height. Outer ditch visible as a hollow, making outside diameter c.40m. Gravelly soil to N needs checking. See also site 19. Background flints here (TL 4385) are 7 per hectare.</p>						
S31	TL39258334	RB	Sett	Grav Cly	2.4	0.13
<p>NOTES: Dark area, burnt stone, bone, quern, 2 pieces tile, colour-coated sherds.</p>						
S32	TL41028271	BA	Henge	Glac Grav	1.8	0.17
<p>NOTES: Three concentric ditches, give crop-mark and visible now in winter corn on ground. Low in centre - former quarry. Farmer said corn grew better in middle. No finds. 46.5m outer diam. Other 2 ditches 40.5 and 35.5m outer diam. Each ditch 3m wide. See App. 2 (V2) for several AP references. Scheduled, SAM 43.</p>						
S33	TL41278275	BA	Barrow	Glac Grav	1.5	0.03
<p>NOTES: Light gravel mound 18m diameter, 0.18m high. A few flints. Near sites 32 and 33. Background flint collections yielded in field centred TL 4047 8244, 2.9 flints per hectare and field centred TL 4164 8281 8.8 flints per hectare. Cropmarks of linear ditches/ fields with superimposed ring ditch. AP: CUCAP, BIT 59-61; CDR 52-3.</p>						
S34	TL39988230	BA	Barrow	Clyey Grav	1.8	0.13
<p>NOTES: Low mound 40m diameter, 0.5m high; ditch visible, cut by hedge. One flint only. Flints in field TL 4011 8232, 18.75 per hectare. CM at N of field. Cropmark of one ring ditch. AP CUCAP, ABJ 27; BJJ 30-1.</p>						
S35	TL49008232	Neo	F S	Glac Grav	2.1	1.50
<p>NOTES: A wide flint scatter, two fire cracked and a few patinated. Langdale axe fragment. A small transverse arrowhead now at Little Downham (P. Harley). One thumb-nail scraper. Near here flint backgrounds at TL 4023 8273 14 flints per ha. TL 4022 8221, 7 flints per ha.; TL 6067 8225 13.8 flints per hectare.</p>						
S36	TL39798199	BA	Barrow	Glac Grav	1.5	0.07
<p>NOTES: Ditch visible in winter corn, 15m diameter. No finds. One ring ditch visible as a cropmark. AP, CUCAP ZM 68; ZW 51-2.</p>						
S37	TL39888189	Neo	Sett	Glac Grav	0.0	0.80
<p>NOTES: Pottery and bone layer running under fen clay. Flints next to the site on the W.</p>						

GAZETTEER OF SITES AND FINDS

No	Grid Ref	Period	Type	Geology	Height (m OD)	Area (ha)
S38	TL41048335	Neo	Sett	Clyey Grav	1.5	0.07
<p>NOTES: Pottery, large scrapers and other flints, burnt flints and pebbles, bone. Dark occupation area. A small subsite to E at TL 4108 8340, by the side of a ditch. Ditch crosses field as a soilmark and continues in next field as an earthwork. No obvious enclosure on the ground, but see Appdx 2 (Vol 2). It is in alignment with CM to SW. Background flints 5 per ha.</p>						
S39	TL38968354	Pre	F S	Glac Grav	1.5	0.30
<p>NOTES: Small quantity of worked flint including a scraper; fire-cracked flint also present. The site runs underneath peat.</p>						
S40	TL39318586	Med	Monast	Glac Grav	0.0	0.00
<p>NOTES: Benedictine abbey of St Mary founded in c 1008, dissolved in 1538. Details in VCH, Salzman 1948, 220-3. Carved stone in Chatteris Museum (1982). Building stone in general area (see D. Haigh, The Religious Houses of Cambridgeshire (1988) Cambridgeshire County Council).</p>						

GAZETTEER OF SITES AND FINDS

No	Grid Ref	Period	Type	Geology	Height (m OD)	Area (ha)
U 1	TL40508390	Pre	F S	Glac Grav	1.8	0.13
<p>NOTES: On a slight mound, but not a barrow. Background studies at field centred TL 4046 8243; 16 strips of 350m length (2.8ha) yielded 52 flints, ie 18.57 per ha.</p>						
U 2	TL40278346	Pre	F S	Glac Grav	1.8	2.00
<p>NOTES: Widespread, rather thin flint scatter.</p>						
U 3	TL41858361	Pre	Other S	Clyey Grav	1.8	0.03
<p>NOTES: Hearth, burnt stone and fire-cracked flint. A few waste flints. A background activity that would normally be ploughed away. No flints in the rest of field (700m strip scanned).</p>						
U 4	TL37948675	Pre	F S	Glac Grav	1.5	2.40
<p>NOTES: Thin scatter of mainly Neolithic flints. Density data recorded in walking strips 200m length (and scanning 5m), so the densities per hectare are 10 times the numbers found; ie 1,1,2,2,0,6,1,3,1,2,0,0,1,4,1,1,1,3,4. The densities are mostly about 10 with peaks at 40 and 60 per hectare, ie background really.</p>						

GAZETTEER OF SITES AND FINDS

No	Grid Ref	Period	Type	Geology	Height (m OD)	Area (ha)
A 1	TL39698227	BA	Knife	Glac Grav	0.3	0.00

NOTES: A fine triangular-shaped bifacial polished knife.

A 2	TL44008640	Pre	Flint	Grav Cly	1.2	0.00
-----	------------	-----	-------	----------	-----	------

NOTES: Five artefacts from field at centre given. Mesolithic axe;
2 polished Neolithic axes; 1 other polished greenstone axe;
1 bifacially worked arrowhead and a Bronze Age scraper.

Conington

TL 190 858 Greenstone polished axe discovered in 1955, now lost; location not precise 'in skirt SW of Bushy Close Farm' does not make sense, mistake for SE? *CBA Group* 7 *Bulletin* 5 (1958) 1.

TL 1884 8451 Socketed and looped bronze spearhead discovered in 1920 (*TCHAS* 4 (1923) 252; *ibid.* 7 (1950) 1, 18 no.2). Norris Museum 670.

GAZETTEER OF SITES AND FINDS

No	Grid Ref	Period	Type	Geology	Height (m OD)	Area (ha)
S 1	TL18418476	Med	Moat	Bouldr Cly	5.0	1.80
NOTES: Bruces castle; good moated site with north entrance (now). Ditches lie east of the main causeway and a long one extends for 400m to the north (now filled). There are two ponds and rectangular earthworks within the enclosure, which is otherwise flat. The monument is tree covered. Page et al. 1923, 293 (VCH Hunts 1); Page (1936) 145 (VCH H3); SAM 160.						
S 2	TL18408522	RB	Sett	Bouldr Cly	4.2	1.80
NOTES: Slightly dark area with burnt stone and a few late sherds and a piece of quern; sherds also from the site at Bruces Farm. Two ditches showing in recently cleaned dike. 'Roman pot & a quern', report by OS corrs. J. R. Garrod in 1954/9 that schoolboys had found 2nd-4th century pottery here.						
A 1	TL19258458	Neo	Axe	Peat	0.0	0.00
NOTES: D. Racey of Bruces Castle Farm has a fine unpolished flint axe.						
A 2	TL19778556	Neo	Axe	Peat	0.0	0.00
NOTES: Bruces Castle Farm. D. Racey has a polished axe, probably Langdale.						
A 3	TL19328507	Neo	Axe	Peat	2.4	0.00
NOTES: At Bruces Castle Farm a small partly polished axe.						
A 4	TL18568491	IA	Sword	Peat	0.0	0.00
NOTES: At Bruces Castle Farm, there is a bronze handle fixed to an iron blade; possibly Iron Age?						
A 5	TL18418576	Neo	Axe	Peat	5.0	0.00
NOTES: At Bruces Castle Farm, which is the find spot, an unpolished flint axe.						

Doddington

Mesolithic

TL 418 903 Wedge-shaped perforated stone discovered in c. 1969 (OS).

Bronze Age

TL 44 93 Late plain socketed-and-looped axe at March Museum on loan from Wisbech Museum, labelled 'Doddington'.

Roman

TL 39 90 Beaker from 'Doddington' at Cambridge University Museum of Archaeology and Ethnology.

TL 4099 9110 Bronze fibula discovered by metal detecting (Chatteris Museum record 1982.02).

TL 38 89 Two 3rd century coins in Wisbech Museum (Phillips 1970, 195).

TL 40 90 Coins discovered in 1824, and a gold coin and pottery discovered when the railway was built in 1847 (Phillips 1970, 218).

TL 41 90 Coin hoard ranging from the reigns of Vespasian to Antoninus Pius (Fox 1923, 229).

GAZETTEER OF SITES AND FINDS

No	Grid Ref	Period	Type	Geology	Height (m OD)	Area (ha)
S 1	TL38609030	RB	Sett	Glac Grav	4.2	0.40
NOTES: Slightly dark area with small sherds of grey ware. Partly quarried away.						
S 2	TL40759070	Med	Manor	Glac Grav	8.0	1.00
NOTES: Not visited. Site of Ely Doddington manor house, now a farm. Described in various surveys, especially 1356 (Pugh 1953, 112-3 (VCH iv)). AP: CUCAP BKJ 8-9 (1972); RC8-EH 215-7 (1982						
U 1	TL*384*896	RB	Pottery	Glac Grav	3.0	0.00
NOTES: Finds of pottery and a hearth made in the 1880s by Thomas Triplow. A map and report accompanying the pottery in Wisbech Museum (Phillips 1970, 195).						

Farcet

Prehistoric

TL 2286 9397 Bronze Age spear found 'near Wake's Farm' reported by G. W. Abbot to OS in 1954.

TL 203 943 A Bronze Age socketed axe 11cm long, and a flint discoidal knife 8.8cm diameter, both without exact find-spots, given to Peterborough Museum in 1976 (L 1251; *Durobrivae* 5 (1977) 31).

Roman

TL 195 943 Roman pottery found in brick clay-pits at various times (Page et al. 1926, 255; in 1910 and 1924 by G.W. Abbot (OS corres.)).

TL 221 949 Roman sherds reported by S. Hallam to OS in 1950.

GAZETTEER OF SITES AND FINDS

No	Grid Ref	Period	Type	Geology	Height (m OD)	Area (ha)
S 1	TL23499328	Neo	F S	Glac Grav	0.9	0.30
NOTES: Wide range of flints. As well as Neolithic a small Mesolithic blade, 2 large patinated flints and a Bronze Age scraper, unpatinated, occurred in the assemblage.						
S 2	TL23399326	BA	Barrow	Grav Cly	2.1	0.02
NOTES: Orange mound 14m. diameter, 30cm high. No finds except for a single flint.						
U 1	TL23039341	BA	Barrow	Glac Grav	2.1	0.02
NOTES: Slight mound of possible barrow, 14m diameter and 25cm high. No finds.						
U 2	TL21359332	Pre	Other S	Glac Grav	1.5	0.03
NOTES: Small area of burnt pebbles and flint with charcoal. A prehistoric cooking site, probably.						
U 3	TL22009430	RB	Burial	Boulldr Cly	3.6	0.00
NOTES: No surface finds. A skull ploughed out in c. 1944 (OS) and in 1906 Roman pottery and a skull discovered buried under a stone slab by G. W. Abbot (RCHM Hunts. 1926, 88 and G.W. Abbot (OS correspondent)).						

Holme

Prehistoric

- TL 22 90 Bronze spearhead found when the Mere was drained (*Archaeol. J.*, 9 (1852) 980); 4 socketed Bronze axes with 2 gouges, hammer and leaf-shaped spearhead found 'at Whittlesey', illustrated by J. Evans *Ancient Bronze Implements of Great Britain* (1881) 130-1. Another spearhead reported found in 1886, now at Peterborough Museum (L 667).

Roman

- TL 1995 8720 A quern held at Top Farm by S. Onyett (recorded during 1976-7 survey, Plate 3).
- TL 2290 9045 Three pewter plates found with silver censer when Whittlesey Mere was drained; 2 plates are now at Cambridge University Museum of Archaeology and Ethnology (Acc. nos 774a & b; *Archaeol. J.*, 8 (1851) 195-6; Phillips (1970) 4.
- TL 2313 9034 (In Whittlesey Mere) colour-coated 4th-century pottery discovered in 1930s; said to be in good condition (G.W. Abbot, oral).

Medieval

- TL 2246 9048 Mid 14th-century silver censer found when Whittlesey Mere was drained in 1849; now at the Victoria and Albert Museum, London (presumably the same item as that discovered with the Roman pewter; all the finds must have been a medieval deposit?).

GAZETTEER OF SITES AND FINDS

No	Grid Ref	Period	Type	Geology	Height (m OD)	Area (ha)
S 1	TL18258791	RB	Sett	Clyey Grav	4.5	0.13
NOTES: A few abraded Roman sherds; some sherds of possible Late Iron Age date.						
S 2	TL22488990	Med	Fishery	Silt	1.2	0.02
NOTES: Large quantity of medieval pottery, mostly late 13th century and a small quantity of 15th- and 16th-century sherds. A few pieces of limestone and a lot of burnt material. Known to farmer J. Bliss. See Holme in text (Hall, EAA) for pottery analysis. After a fen blow many fish-line weights made of lead were found. Excavated 1991 by C A I French for Engl. Her						
S 3	TL23508955	Med	Fishery	Fen Cly	1.2	0.15
NOTES: Large quantity of 13th-century pottery, some stone, flints and burnt daub; small quantity of 17th-century sherds. Windmill mound and banks of old enclosures, visible as soil marks. A single piece of Roman pottery.						
S 4	TL20358760	Pre	F S	Glac Grav	2.0	1.50
NOTES: A gravel island producing several flints, mainly cores. G. Wyman Abbot reported Neolithic settlement 'one mile around' to OS on 17/6/54. Wymer describes his flints as Mesolithic 14 cores, 62 blades and flakes, 2 scrapers, 1 graver and 4 others (Wymer 1977, 28 (CBA Gazetteer of Mesolithic sites)).						

Peterborough

TF 230 009 Bronze Age knife-dagger found when soil stripped for gravel extraction in 1953 (information from OS ex G. Wyman Abbot 1954 & 1968; then in his possession).

Ramsey

Bronze Age

TL 28 89 The Reverend Noble wrote in 1923 'many bronze implements have been found in the fens by Ramsey and Worlick' (Page et al. 1926, 217)

Roman

TL 28 85 Stukeley reports a Roman pavement had been found at Ramsey (1774, quoted by Page et al. 1926; probably medieval.

TL 285 850 Roman pottery discovered in Ramsey town (*J. Roman Studies* 17 (1927) 202.

TL 2865 8502 Samian bowl found (OS Cards).

TL 293 849 and TL 2920 8511. Roman pottery found at Booths Hill and Ramsey abbey (Phillips 1970, 185).

GAZETTEER OF SITES AND FINDS

No	Grid Ref	Period	Type	Geology	Height (m OD)	Area (ha)
S 1	TL30198712	BA	Barrow	Grav Cly	5.8	2.00
<p>NOTES: Five barrows at TL 022 8719, 3026 8719, 3027 8723, 3032 8717 and the reference point. Rough flakes and cores (15) nearby; also red burnt flint. All the monuments are c0.5m high and 25m diameter; sited on the top of a low spur.</p>						
S 2	TL30058671	BA	Barrow	Boulldr Cly	6.7	0.04
<p>NOTES: The only finds were a Mesolithic patinated core and one other flint.</p>						
S 3	TL30058680	Med	Sett	Boulldr Cly	6.7	0.15
<p>NOTES: Dark occupation area with sherds and uneven ground nearby. Medieval sherds; 13th century (6) and 15th century (1), also 1 post-medieval sherd; 4 flints including a scraper and a core.</p>						
S 4	TL31138667	BA	F S	Glac Grav	3.7	0.20
<p>NOTES: Small quantity of worked flints (12); several are patinated; a few scrapers and a fine polished knife. Fire-cracked flint as well.</p>						
S 5	TL31268621	Neo	F S	Glac Grav	1.2	0.15
<p>NOTES: Worked flints, a few of them patinated. Plades and cores of mainly Neolithic character with a few probably being Mesolithic; fire-cracked flints (49). The site runs underneath marine clay.</p>						
S 6	TL30918526	BA	F S	Glac Grav	4.0	0.10
<p>NOTES: Small quantity of flint (14), includes 3 scrapers. No flints are patinated. Fire-cracked flint also present.</p>						
S 7	TL31148558	Neo	F S	Glac Grav	4.0	0.20
<p>NOTES: A total of 24 flints, mostly blades and many of them patinated; 1 core and a small scraper. Possibly some Mesolithic material present.</p>						
S 8	TL30098735	BA	Barrow	Grav Cly	5.8	0.20
<p>NOTES: Two barrows, one at the reference given and the other at TL 3014 8737. Both stand about 0.65m high; the northern one is 35m diameter.</p>						

GAZETTEER OF SITES AND FINDS

No	Grid Ref	Period	Type	Geology	Height (m OD)	Area (ha)
S 9	TL31158662	Med	Manor	Boulldr Cly	4.3	2.00
NOTES: Worlick, scheduled monument SAM 169. Now mostly buried with rubbish. In area recently cultivated sherds of 14-17th century, a few stone and many ceramic roof tiles. Page et al., 1926, 300-1; RCHM Hunts. 1926, 206. AP:CUCAP HD10-12 (1952).						
S10	TL29258478	Med	Ice Hse	Boulldr Cly	5.0	0.60
NOTES: Booths Hill, scheduled monument SAM 154. An ice house, see description in RCHM Hunts. 1926, 208. Not visited.						
S11	TL29028506	Med	Other S	Boulldr Cly	5.0	0.00
NOTES: Gate house of Ramsey Abbey, scheduled monument SAM 141. Partly rebuilt, what survives is 15th century. RCHM Hunts 1926, 207-9; P.G.M. Dickinson 1967, 245-7 (Arch. J. 124).						
S12	TL31508670	RB	Hoard	Boulldr Cly	3.0	0.00
NOTES: Page et al 1926 (VCH) 267. Found in 1890; said to be 4th century. No Roman sherds or occupation found anywhere near during the survey.						
S13	TL23588450	Neo	F S	Glac Grav	3.0	0.50
NOTES: Many flints on the surface, being a gravelly cap to a small mound called Honey Hill. If there are features they may cut into the Oxford Clay underneath. Also recovered perforated pebbles from the site that are probably Neolithic, there being no Mesolithic component in the flint pieces.						
S14	TL25818610	Neo	F S	Glac Grav	0.6	0.50
NOTES: A few flints on a small island surrounded by fen clay. Probably runs under the fen.						
S15	TL25399066	BA	Pottery	Glac Grav	0.3	0.00
NOTES: Finds of pottery that probably represent cremations were discovered when soil was moved for a potato clamp. Probably part of an urnfield. Parts of three vessels discovered (see illustration in Fenland Volume 2, fig. 19). In possession of A. Cox, Daintree Farm.						
S16	TL29188503	Med	Monast	Boulldr Cly	5.2	4.00
NOTES: Ramsey Abbey site, now Ramsey Abbey School. A little of the original building survives behind the later facades, and also an undercroft. The history of the site is given by Page et al. 1926 (VCH Hunts); see also RCHM Hunts 1926, 207-9.						

GAZETTEER OF SITES AND FINDS

No	Grid Ref	Period	Type	Geology	Height (m OD)	Area (ha)
S17	TL29308530	Med	SMV	Boulldr Cly	5.2	1.50

NOTES: In 1978 soilmarks and remains of earthworks with gravel terraces, a pond and finds of building materials and pottery. Large quantities of pottery were recovered when the site was developed in c.1982. Probably much of the material was waste from the abbey; the court rolls suggest there was a midden in the area (E. DeWind 1985, pers. comm.).

GAZETTEER OF SITES AND FINDS

No	Grid Ref	Period	Type	Geology	Height (m OD)	Area (ha)
U 1	TL28508500	RB	Pot	Boulldr Cly	5.0	0.00

NOTES: Site in built up area. JRS 17 (1927) 202; Phillips 1970, 202

GAZETTEER OF SITES AND FINDS

No	Grid Ref	Period	Type	Geology	Height (m OD)	Area (ha)
A 1	TL28988503	Pal	Axe	Boulldr Cly	5.0	0.00
NOTES: This axe is now lost; D. A. Roe, A Gazetteer of Lower and Middle Palaeolithic sites, CBA Research Report (1968) 133. Estimated NGR ('vicarage').						
A 2	TL28308570	Neo	Axe	Boulldr Cly	5.0	0.00
NOTES: Polished greenstone axe found in about 1830, now lost. Illustrated in Trans. Cambs. & Hunts. Archaeol. Soc., 4 (1920) 39.						
A 3	TL23658455	Neo	Axe	Glac Grav	3.0	0.00
NOTES: Information from farmer.						
A 4	TL24508412	Neo	Axe	Boulldr Cly	2.7	0.00
NOTES: Polished axe made of grey flint, in possession of G. Haldane						
A 5	TL***0***0	Mes	Stone	Boulldr Cly	-.2	0.00
NOTES: Perforated stone excavated from dike. In possession of A. Cox Daintree Farm.						

Sawtry

Prehistoric

TL 193 813 Neolithic partly polished flint axe; Norris
Museum 606.

TL 187 833 Bronze Age stone axe hammer found by H. Waters.
Norris Museum 672, *TCHAS* 6 (1944) 191-2.
NGR probably not accurate.

GAZETTEER OF SITES AND FINDS

No	Grid Ref	Period	Type	Geology	Height (m OD)	Area (ha)
S 1	TL19808260	Med	Monast	Boulldr Cly	5.0	10.00
NOTES: Not visited. Cistercian abbey founded in 1147. Described in detail by Brown and Taylor, PCAS 70 (1980) 117-23, with plan and references. Dissolved 1537 (See Cambs County Council Record 1304). Detailed history published by Inskip Ladds in 1914, Trans. Cambs. and Hunts. Archaeol. Soc., 3, 295-322 & 339-355. Sawtry Judith DMV stood to SE of this site. SAM 142						
S 2	TL17501830	Med	Monast	Boulldr Cly	30.0	5.00
NOTES: Not visited. Archers Wood, formerly believed to be the site of Sawtry Judith. Planned by Brown and Taylor (PCAS 68 (1978) 67-9 and references to history and excavation in PCAS 63 (1971) 75-86. Since ploughed and levelled with some record made by the local Society. Details in Cambs. County Council record 1020. Scheduled monument SAM 171.						
S 3	TL17338390	Med	Village	Boulldr Cly	9.0	6.00
NOTES: Scheduled monument SAM 107 'Roman village'; Garrood found Roman material in 1939 (TCHS 6 (1947) 178-86). Pottery in Norris Museum (X960, 1054-64:1192-3). Other refs. RCHM Hunts 1926, 229; JRS 30 (1940) 171; PCAS 29 (1966) 138. Visit of 1983, no evidence of Roman earthworks, looks like SMV, (see 1:2.500 sketch plan). Moat at the south (continued notes)...						
S 3	TL17338390	Med	Village	Boulldr Cly	9.0	6.00
NOTES: (continued notes) At the hill top (north) there is a ring-work (similar to one described as a moat south-west of the church) interpreted as a Cromwellian gun site by Tebbut; OS visitor of 1970 doubts it. AP CUCAP, BLD 98-100 (1972), BNN 7-8 (1976); RC8-EF 54-5, 58-9 (1982).						
S 4	TL17568392	Med	Ch Site	Boulldr Cly	12.0	0.20
NOTES: St Andrews church site; building pulled down in 1880. There is a 13-14th century stone coffin at the south-east. RCHM Hunts 1926, 220; Page et al. 1936, 209-12, with drawing (VCH Hunts 3).						
S 5	TL17258485	RB	Sett	Boulldr Cly	7.0	0.30
NOTES: Dark area with burnt stone and some sherds. Apparently an ephemeral site, but this was probably because the field had been walked in November 1983 removing 1,254 sherds. Some colour-coated sherds reported (Sawtry and District Archaeological Society).						
S 6	TL16258425	RB	Sett	Boulldr Cly	12.0	0.80
NOTES: Dark area with burnt stone and a few sherds; an ephemeral site.						
S 7	TL16568478	Med	Other S	Boulldr Cly	12.0	0.04
NOTES: A mound of 22m diameter and height 1m yielding a piece from a large quern or millstone. A windmill marked on map of 1612 (Hunts Record Office PM 4/6 and 1809 enclosure map).						

GAZETTEER OF SITES AND FINDS

No	Grid Ref	Period	Type	Geology	Height (m OD)	Area (ha)
S 8	TL14858278	RB	Sett	Boulldr Cly	55.0	0.30

NOTES: Poor quality site with late sherds from an area only slightly dark.

U 1	TL17588424	RB	Sett	Boulldr Cly	12.0	0.50
-----	------------	----	------	-------------	------	------

NOTES: Dark area with some burnt stone, medieval and a few Roman sherds. Might be dumped soil from a Roman and medieval site, such as site 3 when the A1 was widened in 1939. See Sawtry site 3.

Stanground

Prehistoric

- TL 217 981 Cropmarks of concentric ditches c. 10 and 15m diameter. AP: S. Upex 1975/K/35A837A; CUCAP RC8-BC 243 (1976). Also a ring ditch c. 25m diameter visible on the same photographs.
- TL 222 964 Bronze Age leaf-shaped sword ploughed up at Horsey Toll Farm (Peterborough Museum L963; CBA Group 7, 11 (1964) 1.). A bronze socketed axe also 'from Horsey' in Peterborough Museum (L663).
- TL 217 985 Bronze Age hoard said to have been found in 1974 (information from NVRC).
- TL 215 982 Bronze Age spearhead found 'in rushes', now at Peterborough Museum (Peterborough New Town, RCHM 1969, 78).
- TL 2222 9634 Dug-out canoe in good condition found 'at Horsey Toll...at the junction of the Nen at Horsey near Peterborough'; probably this NGR. The canoe was 9m long and 0.8m wide; near it was a second canoe formed of two logs pinned together; there were also 2 barbed fish spears, 2 spear heads and two forks', E.T. Artis, *Durobrivae* 1828, pl. 57-8.

Roman

- TL 2243 9573 Roman burial site marked on VCH map. There is a small hill at the NGR reference which would have been dry in Roman times; no surface evidence. Skeletons were ploughed out c. 1960 (pers. comm. E. Standen).

GAZETTEER OF SITES AND FINDS

No	Grid Ref	Period	Type	Geology	Height (m OD)	Area (ha)
S 1	TL22429608	RB	Unknown	Boulldr Cly	5.7	0.70
<p>NOTES: Sherds and a large quantity of red tile and building stone. Partly damaged at north side by road widening in 1983. Some excavation by Peterborough Museum Society Archaeological Field Section in 1961 (Phillips 1970). Finds in Peterborough Museum (CBA Group 7 Newsletter 2 (1955) 3.</p>						
S 2	TL22309597	PM	Other S	Boulldr Cly	5.7	0.70
<p>NOTES: Cromwellian fort with Horsey Grange Farm in the middle. An irregular pentagon with internal 'diameter' 91m. At each corner there is a bastion for a gun. There is some damage by the farm and the road which crosses part of the site to the north. Nothing discovered in the interior (D. Whittome). Scheduled monument SAM 156.</p>						
S 3	TL21419666	RB	Sett	Grav Cly	9.0	1.00
<p>NOTES: Late sherds associated with burnt stone animal bone and small quantities of red tile all on a dark area; Page et al. (1926) 251 (VCH); Peterborough Museum Ann. Rep. 31 (1902). A wharf and causeway said to be identified in 1901. See record 943.</p>						
S 3	TL21489673	RB	Kiln	Ox Cly	8.0	0.20
<p>NOTES: Main kiln area; grey kiln bars and large pieces of grey ware sherds. Each kiln site quite clear, identified by burnings, red tile and limestone. See record 942. Sme kilns excavated by Danell (Current research in Romano-British coarse pottery Council for British Archaeology Research Report 10 (1973) 139-42 (London).</p>						
S 4	TL***0***0	BA	Sett	Peat	0.5	1.00
<p>NOTES: Upright and horizontal carpentered timbers belonging to a rectangular three-aisled building placed on a timber platform. The floor was made of planks dusted with sand. The site was placed in peat fen, presumably for protection. Finds of flint, pottery and a BM date suggest a late Bronze Age date for the structure. Medieval also, see record 945.</p>						
S 4	TL***0***0	Med	Fishery	Peat	1.5	1.00
<p>NOTES: Sherds of 14-15th century discovered on the surface where there is also a stone scatter from the Fen Causeway. A building called Muscot stood here as late as 1617, and there was a ferry point here in the 15th century (Halliday in Pryor 1986, 2 (Proc. Prehist. Soc., 52) 2. See record 944.</p>						

Wimblington

Unknown period

- TL 4268 9049 Cropmark of possible ring ditch on APs; not likely to be Bronze Age at this level, 0m OD (DNH). RAF F21/58/6572/0211-0212 (1965); CUCAP RC8-ED 78-9 (1982).
- TL 436 905 Cropmarks, no finds. AP: Crawford Collection 02410/9/76 and 02411/9/76; CUCAP RC8-ED 77-9 (1982).
- TL 4305 9064 Human remains discovered in 1896-7 (OS 1:10,560, 1927).
- TL 4334 9007 Urns discovered in about 1913 OS 1:10,560, 1927).

Palaeolithic

- TL 43 90 Flake with faceted butt from 'Griffin pit, Wimblington Common' (Baden Powell, *Proc. Prehist. Soc.* 16 (1950), 29-41).
- TL 45 95 Core from Ancaster Farm; circular outline in black unpatinated flint (Baden Powell *id.*).
- TL 449 932 Acheulian flint hand axe ploughed from gravel 23cm deep (J.H. Ward, *CBA Group 7 Bulletin* 6 (1959) 2).

Mesolithic

- TL 45 91 Microlith from Jenny Gray's Farm (*Gazetteer of Mesolithic sites*, Wymer 1977, 300); another from Stonea also reported at TL 454 921.

Neolithic

- TL 446 919 Polished and flaked axe discovered in about 1959 (*CBA Group 7 Bulletin* 6, (1959) 2).
- TL 4668 8945 Neolithic polished axe found on gravelly skirtland; in possession of R. Morris (seen by DNH).
- TL 45 93 Stone axe from Stonea made out of micaceous greyware from Coniston Grit formation. At CUMAE, accession no. A 1905,458 (Clough and Green *Proc. Prehist. Soc.* 38 (1972) 108-56).

Bronze Age

- TL 40 93 Battle axe with shaft hole and angular but found in area of Linwood Farm, March (Ant. J. 10 (1930) 2; D. Roe, *Proc. Prehist. Soc.*, 32 (1966) 8.
- TL 41 92 Rapier 27 cm. long 'from Wimblington' in Wisbech Museum (B.A.V. Trump, *Proc. Prehist. Soc.* 28 (1962) 80-103).

Iron Age

- TL 45 93 Gold stater of Iceni (Mack type 401) discovered in 1956 (*CBA Group 7 Bulletin* (1956) 1.
- TL 45 93 Hoard of about 38 silver Icenian copins found at Stonea (J. Evans *Ancient British Coins Supplement* (1890) 587; Fox 1923, 88).
- TL 41 92 Nine coins exhibited from total of 300-350 found near Wimblington --could be the same as the Stonea hoard (*British Numismatic J.*, 1 (1904) 417 and id. 3 (1906) 388; D. Allen *Britannia* 1 (1970) 1-33).

Roman

- Tl 41 92 Upper part of unprovenanced puddingstone quern at March Museum.

Medieval

- TL 457 939 Fowler reported 'ruins of medieval stone chapel with 13th-century decoration' when dug-out made in 1942. Not confirmed by local enquiry 1973 (OS correspondent, G. Fowler 1949; OS 1973). Unlikely to be correct, other Fowler reports in this area are inaccurate (DNH).

GAZETTEER OF SITES AND FINDS

No	Grid Ref	Period	Type	Geology	Height (m OD)	Area (ha)
S 1	TL44789305	IA	Sett	Glac Grav	1.5	3.00
<p>NOTES: Iron Age earthworks marking a two-phase double-ditched D-shaped enclosure within a larger (earlier) one and with a common southwest side. Considerable numbers of reddish IA sherds. Farmer reported that skeletons have been ploughed out and brooches found on west rampart. Sectioned by Potter and Jackson in 1980. See next record for references.</p>						
S 1	TL44789305	RB	Sett	Glac Grav	1.5	3.00
<p>NOTES: Farmer reports Brandon metal detector users took brooches and necklace in 1978. F. Walker reports that 25 debased coins, 257-275 AD, now in Wisbech museum, came from here. (CBA Group 7 Bulletin 6). Iron Age also (Stonea Camp) above. Potter and Jackson section; Britannia 12 (1981) 34. Camp description in Salzman 1948, 46 (VCH Cambs 2). Sched. SAM 22</p>						
S 2	TL45109313	Neo	Sett	Glac Grav	0.4	0.03
<p>NOTES: Neolithic occupation discovered underneath a round barrow, Potter 1976 (PCAS 66, 23-54). BA also.</p>						
S 2	TL45109313	BA	Barrow	Glac Grav	1.5	0.07
<p>NOTES: Ditched barrow with two cremations excavated in 1961-2, one with grave goods of beaker and necklace. AP: CUCAP, FN 11, Crawford Collection (1936). Neolithic also, see above. Potter 1976 (PCAS 66, 23-54).</p>						
S 3	TL45329167	BA	Barrow	Glac Grav	3.3	0.06
<p>NOTES: Two mounds (other at TL 4531 9161) visible as slight pink humps. No finds but a few rough Bronze Age flints in the general area. Three barrows marked on OS 1:2,500 (1926): VCH 1 (Salzman) 1938, 277 and 303. AP: CUCAP, BEL 41-3 (1970).</p>						
S 4	TL45409185	BA	Sett	Glac Grav	3.3	0.64
<p>NOTES: Rectilinear enclosure (AP: CUCAP, RC8-CO 21-2). Probably an occupation site. One decorated beaker sherd and 34 Bronze Age flints, some fire cracked. IA also.</p>						
S 4	TL45409185	IA	Sett	Glac Grav	3.3	0.64
<p>NOTES: Early sherds (17) and 7 possibly Belgic; fire cracked flints Bronze Age also. There is a square cropmark probably of Iron Age date.</p>						
S 5	TL54609392	RB	Sett	Bouldr Cly	3.3	0.13
<p>NOTES: Dark occupation area possibly related to site WMB 6, to the north.</p>						

GAZETTEER OF SITES AND FINDS

No	Grid Ref	Period	Type	Geology	Height (m OD)	Area (ha)
S 6	TL45459425	RB	Fld S	Glac Grav	3.3	1.55
NOTES: Complex series of soilmarksr, possibly lazybeds; dark marks inbetween; two sherds of Roman pottery and some BA flints. Unlikely to be BA but related to one of the nearby Roman sites (cf March site 16). AP: CUCAP, ACL 4(1976) and RC8-ED 72-4 (1982).						
S 7	TL45959448	IA	Sett	Glac Grav	3.3	0.60
NOTES: Sherds and occupational debris scattered over a dark area. Burnt stones and a loomweight. One Belgic sherd.						
S 8	TL46039460	RB	SA+SE	Grav Cly	3.0	0.13
NOTES: A saltern on a mound with a large quantity of briquetage including brick supports; fabric different to the usual Roman saltern- could be Iron Age? A few sherds of Roman and Iron Age pottery. Not far from a silt roddon.						
S 9	TL46139465	BA	Barrow	Glac Grav	0.8	0.80
NOTES: A circular gravel area of a ploughed-out barrow. One sherd of Bronze Age pottery and a piece of human skull. Adjacent is a considerable area yielding BA flints (not searched in detail). AP: CUCAP, BCC 3-4 (1970); RC8-D 36-7 and 50-1 (1982). D. N. Riley, Antiquity 19 (1945) 145-154. Also an AP in the Crawford Collection (1936).						
S10	TL46219412	IA	Sett	Grav Cly	3.0	1.33
NOTES: Iron Age sherds on gravelly clay next to a silt roddon. Dark area; finds include a loomweight and one Belgic sherd. Burnt pebbles and flints. Briquetage on roddon may be Iron Age, similar to that from WMB site 8. Roman also.						
S10	TL46219412	RB	SA+SE	Silt	3.0	1.33
NOTES: Sherds include samian. Site spreads on to pre-Flandrian soil where there is Iron Age material.						
S11	TL43438935	BA	Barrow	Glac Grav	4.5	1.33
NOTES: Mounds of two damaged barrows, one at NGR given and the other at TL 4347 8935; both about 0.9m high. No finds. Scheduled Monument SAM 23. Roman also.						
S11	TL43508940	RB	Sett	Glac Grav	4.5	1.33
NOTES: Dark occupation area with samian, Horningsea and colour-coated sherds. Fowler reported '15 earthen rings' when the field was pasture (1949, OS correspondent). JRS 14 (1925) 225; PCAS 58 (1965) 26; PCAS 63 (1949) 14; Phillips 1970, 216. AP: CUCAP BTN 1-4 (1975). Partly excavated in 1924 by F. M. Walker of Manea. Scheduled monument SAM 23. BA also.						

GAZETTEER OF SITES AND FINDS

No	Grid Ref	Period	Type	Geology	Height (m OD)	Area (ha)
S12	TL46009340	RB	Sett	Silt	3.3	0.50
NOTES: Not visited. Excavation by T. W. Potter showed there was a small ditched enclosure containing occupation, probably from a timber building with daub walls. The date range was 1st half of 2nd century to mid 3rd century. The animal bones suggested an economy based on cattle and sheep raising (Potter 1976, 23-54 (PCAS 66)).						
S13	TL45069391	BA	F S	Glac Grav	5.0	1.80
NOTES: A large complex multi-period site with IA and Roman occupation. Some worked flints and previously reported a hoard of 5 socketed BA axes, 4 now in Wisbech Museum and 1 formerly with F. M. Walker (Salzman 1948, 279-303 (VCH Cambs. 1)).						
S13	TL45069391	IA	Sett	Glac Grav	5.0	1.80
NOTES: A large complex multi-period site with IA and Roman occupation. Dark area of occupation with Iron Age and Roman sherds, quernstone fragments, and a few medieval sherds to the W and post-medieval to the N. Sited on the highest point of Stonea island.						
S13	TL45069391	RB	Sett	Glac Grav	5.0	1.80
NOTES: A large complex multi-period site with IA and Roman occupation. Dark area of occupation with Iron Age and Roman sherds, quernstone fragments, and a few medieval sherds to the W and post-medieval to the N. Sited on the highest point of Stonea island.						
S14	TL45499375	RB	Sett	Bouldr Cly	3.0	0.30
NOTES: Small site with area of dark occupation on skirtland.						
S15	TL45639340	RB	SA+SE	Bouldr Cly	3.0	1.00
NOTES: The site lies partly on gravel and partly on a silt roddon. There is occupation debris with a piece of quern and saltern briquetage at the E.						
S16	TL45649325	RB	SA+SE	Silt	3.0	0.80
NOTES: Occupation debris and briquetage lying on a roddon, the saltern being at the W.						
S17	TL44849352	BA	Barrow	Grav Cly	3.0	0.00
NOTES: A low mound, recorded as 20m diameter by OS in 1973. Several flints in the area. Another mound to the W at TL 4472 9354, not quite circular, soil here more gravelly. AP, CUCAP RC8-ED 73-5 (1982); Crawford Collection 02426/9/58 (1936).						

GAZETTEER OF SITES AND FINDS

No	Grid Ref	Period	Type	Geology	Height (m OD)	Area (ha)
S18	TL44909365	RB	Villa	Grav Cly	5.5	4.00
NOTES: A mound of building stone 64m in diameter and about 1 metre high. Contains red ceramic tile (imbreces and tegulae), bone sherds, hypocaust tile and opus signinum. On highest part of Stonea island: probably gave its name to Stonea. Excavated by the British Museum 1980-4. Potter and Jackson 1982, 110-20 (Antiquity 56). See also Britannia notes 1981-5. [more notes]						
S18	TL44909365	RB	Villa	Grav Cly	5.5	4.00
NOTES: [contd. notes]. The site is now known as Stonea Grange. The discovery of the stone mound was new but many finds have been noted over the years. See Phillips (1970, 218-9) for 2,000 coins of 3rd century; Babington 1883, 87 (Ancient Cambs.); Robertson in Numismatic Chron. 5 (1977) 177. AP, Crawford Collection 02425/9/57; 02426/9/58. (Antiquity 56).						
S19	TL42209295	IA	Sett	Boulldr Cly	0.5	0.30
NOTES: Dark occupation area, sherds of Iron Age (including 1 Belgic) and Roman periods.						
S19	TL42209295	RB	Sett	Boulldr Cly	0.5	0.30
NOTES: Dark occupation area, sherds of Iron Age (including 1 Belgic) and Roman periods.						
S20	TL42319353	IA	Sett	Grav Cly	2.1	0.60
NOTES: Dark occupation area with sherds of Iron Age and Roman date.						
S20	TL42319353	RB	Sett	Grav Cly	2.1	0.60
NOTES: Dark occupation area with sherds of Iron Age and Roman date. Samian and a lot of grey wares, pieces of quern and burnt stone (Hertfordshire and Millstone grit). See record 1185.						
S21	TL44139278	RB	Encl	Silt	3.0	0.09
NOTES: Square enclosure on roddon adjacent to watercourse. See Gazetteer of Vol 2 for AP numbers.						
S22	TL45009257	RB	Fld S	Silt	3.0	0.45
NOTES: Ditches following the course of, and running roughly perpendicular to, a watercourse (on a roddon). See Gazetteer 2 of Vol 2 for AP numbers.						

GAZETTEER OF SITES AND FINDS

No	Grid Ref	Period	Type	Geology	Height (m OD)	Area (ha)
S23	TL47209351	RB	Encl	Silt	3.0	0.14
<p>NOTES: One rectangular and one ovate enclosure. See Gazetteer 2 of Vol 2 for AP details.</p>						
S24	TL42859325	RB	Canal	Silt	3.0	3.00
<p>NOTES: Linear soilmark of a silted canal with several short lines at right angles, believed to be silted peat cuttings. See Appendix 2 of Vol 2 for AP details.</p>						
S25	TL46869253	RB	Encl	Grav Cly	3.0	0.36
<p>NOTES: Traces of ditches making a complex of very small enclosures. An odd site, nothing visible on the ground, geology not certain, either as stated or boulder clay; not on a roddon. See Appendix 2 of Vol 2 for AP details.</p>						

Wood Walton

Mesolithic

- TL21 82 Axe at Norris Museum, X602, no accurate location.
- TL 220 830 Axe reported at Norris Museum from this estimated location (Wymer 1977).
- TL 210 826 Perforated hammerstone found c.1925 by J.T. Ayres, Norris Museum X627.

Neolithic

- TL 205 837 Blade from near Higney Grange, Norris Museum X569.
- TL 214 845 Polished stone axe in possession of finder; a few background flints found near during the Fenland Survey in 1983.
- TL 214 829 Flint blade and chisel found c.1936, Norris Museum X555, X616.
- TL 211 828 Flint Flake from Wood Walton site 1 in Norris Museum, X400.
- YL 211 820 Discoid flint knife in Norris Museum, X577.
- TL 221 825 Polished axe of igneous rock, Norris Museum X580.
- TL 2240 8251 Greenstone polished reported by J.R. Garrod; information ex OS, no further data or present artifact location known.
- TL 218 883 Two polished axes of grey flint in Norris Museum, X600, X859.
- TL 2186 8155 Brown flint axe, Norris Museum X622.

Bronze Age

- TL 220 831 Bronze socketed adze 9cm long, in Norris Museum;
Ant. J., (1929) 249.
- TL 231 835 Bronze palstave at Norris Museum, x668; *TCHAS* 7
(1952) 82 (location doubtful, said to be from Castle
Farm, but the reference is in the Nature Reserve, DNH).
- TL 2202 8243 Polished igneous axe in Norris Museum.
- TL 226 814 Barbed and tanged arrowhead, Norris Museum X664.
- TL 2163 8163 Possible barbed and tanged arrowhead, retained by
finder, a Mr. Kimberley (OS).

Roman

- TL 2186 8030 Coin hoard found in c1886 at Hill Top Farm (Page et
al. 1926, 268; also J.R. Garrood OS corres. Only a
few coins survive in Norris Museum, NM447, 1456,
1489, 1510-1, 1518, 1521 and 1534.
- TL 2080 8268 Stray coin of Constantius I found in garden at
Church End; Norris Museum NM1533.
- TL 2087 8296 Quern found in 1930 (*TCHS* 7 (1950) 51) and a coin
nearby at TL 2087 8310 (*TCHAS* 6 (1938) 48).
No site there (DNH 1983).
- TL 214 837 Roman pottery reported (Phillips 1970, 185; *TCHAS* 5
(1935) 276. Querns reported at TL 215 837
TCHAS 7 (1950) 51. Nothing found during 1983 survey.

Medieval

- TL 2141 8081 Cross base of 14th or 15th century date in village;
poor condition.

GAZETTEER OF SITES AND FINDS

No	Grid Ref	Period	Type	Geology	Height (m OD)	Area (ha)
S 1	TL21058275	Med	Castle	Grav Cly	7.5	4.20
NOTES: Sched. mon. SAM 107. Not artificial mound but a natural hill with a ring ditch on top. Partly quarried and incomplete on south and south-east. Paddocks on north and east. Outer ditch, 230m diameter, visible only as a soilmark on the west (arable field). RCHM Hunts 1926, 298; Page et al., 1926, 298 VCH; A.E. Brown & C.C. Taylor PCAS 68 (1978) 62-5, with plan.						
S 2	TL21968366	Neo	F S	Glac Grav	1.5	0.50
NOTES: Blade cores and part of a Mesolithic axe.						
S 3	TL21678347	Neo	F S	Glac Grav	1.5	0.90
NOTES: Many blade cores and some pieces of Mesolithic axes. Three sherds of pottery; not much fire-cracked flint. Previously 16 flints discovered including Mesolithic and Neolithic axes now in Norris Museum; Ant. J., 21 (1941) 59 (see CCC S&M 01959; another Neolithic axe in Norris, X604. Axehead and chisel found to the west in 1936. BA sherds (9) in Norris M.						
S 4	TL20958267	Med	Village	Boulldr Cly	4.5	2.70
NOTES: Area excludes castle. Shrunken village of Church End (6 houses left) partly surviving as an earthwork. At reference point sherds from the 12th-20th centuries; at west end, TL 2070 8268, a lot of post-medieval sherds and some medieval; burnt stone with bone from a dark area; hollows etc.						
S 5	TL21508196	RB	Sett	Boulldr Cly	18.0	0.95
NOTES: Samian and quernstone fragments; very dark soil and burnt stone. Could not see properly because of corn.						
S 6	TL21808240	?	Encl	Juras cly	4.0	2.00
NOTES: No finds; CM of enclosure corresponds to medieval fen edge. Also droeways, site therefore is probably medieval, but odd that it should be ditched. A few pieces of burnt stone found only. May be Roman or prehistoric that accidentally was placed on an area later to be the fen edge. See Appendix 2 in Hall (1992; EAA 2nd Fenland volume).						

GAZETTEER OF SITES AND FINDS

No	Grid Ref	Period	Type	Geology	Height (m OD)	Area (ha)
U 1	TL22268361	Neo	F S	Glac Grav	1.0	0.10

NOTES: A few flints and artifact A1 came from here. Previously (c.1936) 2 greenstone axes and 2 flint chisels found (Norris Museum X546, 561-2, 584).

GAZETTEER OF SITES AND FINDS

No	Grid Ref	Period	Type	Geology	Height (m OD)	Area (ha)
A 1	TL22268361	Neo	Flint	Glac Grav	1.0	0.00

NOTES: Triangular flint, bifacially worked.

A 2	TL21828421	BA	Axe	Peat	-1.0	0.00
-----	------------	----	-----	------	------	------

NOTES: Axe find marked on OS 1:10,560 sheet. Local farmworker, in 1983, reported that an axe was found by an Italian prisoner of war and shown to Cambridge Museum; given back to finder (ie lost).

GAZETTEER OF SITES AND FINDS

No	Grid Ref	Period	Type	Geology	Height (m OD)	Area (ha)
S 1	TL17848838	Pre	Other S	Boulldr Cly	1.8	0.03
NOTES: Small area of burnt pebbles and flint with charcoal and burnings; on skirtland, probably a cooking site.						

A 1	TL18068842	Neo	Axe	Boulldr Cly	2.0	0.00
NOTES: Not seen; literature reference, probably Whyman Abbot, see Cambridgeshire Archaeological Record.						

GAZETTEER OF SITES AND FINDS

No	Grid Ref	Period	Type	Geology	Height (m OD)	Area (ha)
S 1	TL17338757	RB	Sett	Boulldr Cly	12.0	0.45
NOTES: Dark occupation area on hill top; late sherds, bone and pebbles.						
S 2	TL17858769	RB	Sett	Boulldr Cly	11.0	2.00
NOTES: Large area of occupational debris in a hollow; dark areas with burnt pebbles that are probably hut sites. A few sherds may be Iron Age. A quern reported from TL 176 879 probably originated from this site (1954).						
A 1	TL17808770	Neo	Axe	Boulldr Cly	11.0	0.00
NOTES: Two axes, both of polished flint, one 16 by 7.5 cm, and the other 16 by 7 cm. One held by J. Bliss, the other at Ermine Lodge (1980).						

GAZETTEER OF SITES AND FINDS

No	Grid Ref	Period	Type	Geology	Height (m OD)	Area (ha)
S 1	TL48139129	Mes	F S	Sand	1.0	0.05
NOTES: Site lies on very small sand island, largely buried by peat. A tranchet axe, patinated and finely worked on one side, and possible secondary working on the other (A4, given to Peter Short). Blades and microliths, fire-cracked pebbles. The site probably runs under marine clay.						
S 2	TL48659093	Mes	F S	Sand	3.5	0.30
NOTES: Concentration of flints on the south end of Bedlam Hill; the site probably goes under the fen. Subsequently identified as the southern part of the large site walked for many years by F. M. Walker (see Appendix 2; the surviving material is in Wisbech Museum).						
S 3	TL48308940	BA	F S	Glac Grav	4.0	0.70
NOTES: B A flints and sherds of IA pottery (and 2 Roman) on an area that is slightly dark. A previous owner of the field has a looped and socketed BA axe from nearby (A3). Also in the area a large number of 19th-century kiln supports (saggars), presumably from kilns mentioned in directories and marked on the OS map; no sign of other kiln debris or clay pit.						
S 3	TL48308940	IA	Sett	Glac Grav	4.0	0.70
NOTES: BA flints and sherds of IA pottery (and 2 Roman) on an area that is slightly dark. A previous owner of the field has a looped and socketed BA axe from nearby (A3). Also in the area a large number of 19th century kiln supports (saggars), presumably from kilns mentioned in directories and marked on the OS map; no sign of other kiln debris or clay pit.						
S 4	TL47529318	Pre	F S	Glac Grav	2.5	0.05
NOTES: A few worked flints and a single sherd of IA pottery. Most flints are probably Bronze Age.						
S 5	TL47859255	IA	Sett	Glac Grav	2.5	1.00
NOTES: Large settlement on a gravel ridge yielding a few worked flints, many IA, Belgic and Roman sherds. Dark area with domestic animal bone and a piece of porphritic quernstone. The IA sherds are hard and sandy.						
S 5	TL47859255	RB	SA+SE	Glac Grav	2.5	1.00
NOTES: Large settlement site on gravel ridge yielding a few worked flints, many IA, Belgic and Roman sherds. Dark area with domestic animal bone and a piece of porphritic quernstone. The IA sherds are hard and sandy; Roman also, see record 418 A cremation urn was discovered some years ago and kept at the farm, now lost (A5).						
S 5	TL47859255	RB	SA+SE	Glac Grav	2.5	1.00
NOTES: Large settlement on a gravel ridge yielding a few worked flints, many IA, Belgic and Roman sherds. Dark area with domestic animal bone and a piece of porphritic quernstone. The IA sherds are hard and sandy; Roman also, see record 418 A cremation urn was discovered some years ago and kept at the farm, now lost (A5).						

GAZETTEER OF SITES AND FINDS

No	Grid Ref	Period	Type	Geology	Height (m OD)	Area (ha)
S 6	TL47338940	IA	Sett	Boulldr Cly	4.5	0.50
NOTES:Dark occupation area with early Iron Age and Roman sherds.						
S 6	TL47338940	RB	Sett	Boulldr Cly	4.5	0.50
NOTES:Dark occupation area with early Iron Age and Roman sherds.						
S 7	TL47709290	RB	Other S	Grav Cly	2.5	2.00
NOTES:No finds on the ground. APs show 10 small ring ditches and a parallel ditched droveway that appears to run to site MAN 5. The droveway is likely to be Roman and the rings agricultural. At Elm they were believed to be medieval (Hall 1978,27 (PCAS 68)), but most of the ones in the Wisbech region are now believed to be Roman (Hall EAA, Fenland volume 3).						
S 8	TL47478754	Mes	F S	Glac Grav	1.0	0.80
NOTES:Fire-cracked flints suggest an occupation site. Most of the worked flints are blades, with 2 microliths and 4 cores. A tranchet axe (A6, 15cm long and 5cm wide) from this site is in the possession of a local farmer. The site runs under marine clay.						
S 9	TL47368882	BA	F S	Sandy Grav	4.3	0.30
NOTES:Biggin area. Worked flints of mainly BA character, probably an occupation site.						
S10	TL46959071	BA	Barrow	Boulldr Cly	2.1	0.01
NOTES:A barrow excavated in 1929 by F. M. Walker of Manea. Only known report is in the Peterborough Advertiser 23 Aug. 1929. Some detail given of 5 cremations and five inhumations with grave goods of decorated beaker sherds, jet beads and flints including a knife; a skeleton photograph is published in the article.						
A 3	TL48258932	BA	Axe	Glac Grav	3.5	0.00
NOTES:Fine BA socketed axe with one loop and fluting. Found near site 3 by Mr. Fox who still retains it. (Outline drawing in file).						

GAZETTEER OF SITES AND FINDS

No	Grid Ref	Period	Type	Geology	Height (m OD)	Area (ha)
S 1	TL33308051	RB	Sett	Bouldr Cly	9.0	1.50

NOTES: Dark area with occupation debris and sherds of samian and colour-coated wares.

GAZETTEER OF SITES AND FINDS

No	Grid Ref	Period	Type	Geology	Height (m OD)	Area (ha)
S 1	TL35728088	Mes	F S	Sand	0.3	2.60
<p>NOTES: Extensive area of flint on 2 fields, neither in very good condition; eastern fairly weathered, western under rape. No pottery or bone. Seems early - many microliths, few scrapers. Goes under marine clay fen deposits. Section made by augering 1990. Site spreads to field on the north, so doubling the size here given. Waterlogged nearby.</p>						
S 2	TL35844075	Neo	F S	Sandy Grav	2.0	0.13
<p>NOTES: Polished greenstone axe found amongst the flints (P. Harley)</p>						
S 3	TL36928064	RB	Sett	Grav Cly	2.1	0.60
<p>NOTES: Horningsea and late sherds; dark area with bone and much post-medieval.</p>						

Yaxley

Medieval

TL 176 922

Ridge and furrow around the village area. AP: CUCAP
AXY 95-100 (1969), AZO 61-2 (1969), BPK 73-4 (1974).

GAZETTEER OF SITES AND FINDS

No	Grid Ref	Period	Type	Geology	Height (m OD)	Area (ha)
S 1	TL21609186	Med	Fishery	Marl	1.5	0.00
<p>NOTES: Bone, burnt stone, building stone and pottery of the 13-14th centuries. Excavation reported by OS correspondents C. F. Tebbut and J. R. Garrood in 1952 and 1959; no report.</p>						
U 1	TL19109220	RB	Kiln	Juras cly	3.0	0.50
<p>NOTES: Not visited. Roman pottery and kiln debris with wasters, tile and stone discovered in about 1955 (E. Standern, CBA Group 7 Bulletin 3 (1956) 2).</p>						

GAZETTEER: EXPLANATORY NOTES

Gazetteer 2 is arranged alphabetically by parish. Within each parish the record is in National Grid order. Where there is correlation with field surveyed 'sites' the parish number of the latter is given in column 2 (S) allowing easy reference to Gazetteer 1. The fourth column lists the principal photographs used for mapping, copies of which may be inspected in the libraries of CUCAP or the RCHME. Identification of source is as follows: obliques from CUCAP are prefixed by one, two or three letters (eg XS 27), verticals by either RC8-, K17-, or V- (eg RC8-EB 248) and can usually be viewed stereoscopically; RCHME acquired material is filed under a four-figure grid reference followed by an index number and, for stereo sets, frame numbers (eg TL4480/2/453-455); for reasons of space these sometimes appear in abbreviated form. The final column allows brief description and comments to be made, with cross references to other sites and sources (other than Phillips 1970) where relevant. If features were sketched on to the working maps this is also noted in column five: no comment on mapping means that features were computer corrected. The descriptive notes are an abbreviated comment on the mapped features (and occasionally on the reliability of that information) and are not intended to provide definitive archaeological statements: nor should they be used as such.

ABBREVIATIONS

Parish names

CHA	Chatteris	WAR	Warboys
DOD	Doddington	WMB	Wimblington
MAN	Manea	WWN	Wood Walton
PCF	Pidley cum Fenton		

GAZETTEER 2: features mapped from air photographs

Ph	S	NGR	Photo number	Description and comments
CHA	-	TL 389 830	TL3883/1/224-228	Small rectangular or square marks in crop which lie in the fen and are more likely to relate to recent agriculture than to be archaeological features. Nothing plotted at 1:10560.
CHA	36	TL 397 819	ZM 68, ZW 51-52, TL3982/3/75-76	1 ring ditch at 39768197.
CHA	-	TL 396 821	JG 10-13, ZM 68-69, ZW 51-52, BCN 85	3 ring ditches (39648208, 39648216, 39688220) and 1 ovate enclosure (39678215). Adjacent to CHA 32 and 36.
CHA	34	TL 399 823	ABJ 27-28	1 ring ditch at 39958233.
CHA	-	TL 395 845	TL3984/2/149-150	Possible enclosure plus linear features in area of geological cracking. Slightly dubious. Sketched at 1:10560.
CHA	-	TL 402 823	ABJ 27, BJG 30-31	2 ring ditches (at 40198234 and 40218232) abutting a linear ditch. Background flints from fields (Table 3.4, 3.8).
CHA	-	TL 403 826	TL4082/3/93-95	Possible ring ditch of small diameter at c.40368269. Sketched at 1:10560. Adjacent linear features are probably geological and not added to map.
CHA	-	TL 409 826	CDR 52-3	Linear ditch, links with CHA 32.
CHA	-	TL 405 836	M 75	1 ring ditch (at 40508363). Background flints from field (Table 3.9).
CHA	38	TL 408 831	RC8-EC 236-7, TL4083/2/76-77, TL4183/1/190-1, TL4183/3/269-272, TL4183/6/100-102	Extension of CHA 38 forming a probable enclosure and having internal and external features - possibly paddocks.
CHA	-	TL 408 839	TL4083/1/192-194	Linear features, traces of a possible field system. Straight line to the N is likely to be a pipeline and not added to map. Sketched at 1:10560.
CHA	32	TL 410 827	M 76-77, UB 63-65, ZM 64-66, BEO 5-6, 70-LIN 92, CDR 52-53, RC8-DC 91-92	Triple ditched circle at 41008275, probably a round barrow. Much mutilated.
CHA	-	TL 410 828	CDR 52-53	1 small ring ditch at 41088282. NE of CHA 32.
CHA	-	TL 411 829	ZM 64-65, CDR 52-53	4 ring ditches at 41128297, 41138299, 41238296 and 41208300. Latter has trapezoid enclosure superimposed. NE of CHA 33.

GAZETTEER 2: features mapped from air photographs

Ph	S	NGR	Photo number	Description and comments
CHA	33	TL 412 827	BIT 59-61, CDR 52-53, TL4183/3	Linear ditches/fields (possibly geological) with superimposed ring ditch at 41278275.
CHA	-	TL 412 828	TL4182/5/69-73	One ring ditch at c41208284. Sketched at 1:10560.
CHA	-	TL 416 829	TL4183/2/267-8	Three parallel bank-like features. The central one lies along the otherwise unmarked Chatteris/Sutton parish boundary. Sketched.
CHA	38	TL 411 832	RC8-EC 236-7	Linear earthwork, part upstanding. Also recorded running to W probably forming an enclosure (see 408831). Neolithic.
CHA	-	TL 412 830	CDR 52-53	Trapezoid enclosure. S of CHA 38. One ring ditch (see 411829) superimposed.
CHA	-	TL 413 856	TL4185/1/383-384	Possible curvilinear or D-shaped enclosure which looks dubious on the photographs. Sketched at 1:10560.
CHA	25	TL 414 854	TL4185/1/383-384	Traces of ditches and angled corners of possible enclosures in a corner of a field. Sketched at 1:10560.
CHA	26	TL 418 852	LG 68-69	Building foundations and linear features. See Fig 54.
CHA	12	TL 419 855	ATY 56-57, TL4185/4/123-126	Linears and possible enclosure (?periglacial). Ridge and furrow traces. See Fig 54. Features continue into field to NW and look decidedly geological. They (from RCHM cover) were not added to map.
CHA	-	TL 421 835	TL4283/1/273-274	Linear ditch, probable W extension of that running from site 22 (426838). Sketched at 1:10560.
CHA	22	TL 426 838	XR 72-3, RC8-M 173-4, RC8-DC 108-9, TL4283/2/275-8, TL4283/6, TL4283/8	Parallel driveway, field/paddock traces. Probably links with CHA 23 to make extensive agricultural system
CHA	23	TL 420 846	LG 70-72, LV 9-11, RC8-EC 233-5	Field/paddock traces, superimposed with linear bank/ditch. Probably links with CHA 22. See also 422846.
CHA	-	TL 422 846	TL4284/5/105-108	Ditched field system making a N extension of site 22 (426838). Geology and recent boundaries also lie in the area. See also 421850 for details further N.
CHA	-	TL 421 850	TL4285/1/251-253, TL4285/2/0-2	Linear features, mostly geological, but among which lie parallel ditches of field boundaries which align with (?Bronze Age) system to the S (see 422846).

GAZETTEER 2: features mapped from air photographs

Ph	S	NGR	Photo number	Description and comments
CHA	13	TL 423 856	AZP 99-101, BRW 54-55	Enclosure complex showing as light soil marks (?banks). A dubious archaeological feature. See Fig 54.
CHA	18	TL 431 830	M 78, LE 63-65, NH 10, XR 74-75, AED 1-2, AXV 49-50, BIT 62 & 66, BJA 87, TL4282/2/213-4	4 ring ditches at 42978319, 43128312, 43088305 and 43128305. Part of a group of 5 extending S into Mepal.
CHA	17	TL 436 838	BIT 63-65	1 ring ditch at 43588380 on site of tumuli (?) on 1:10560.
CHA	5	TL 432 883	CBT 64-66, 68-70, TL4387/1/459-462	Remains of paddock/field system and droves in area of iron age settlement. Also covers CHA 4 (medieval) and 8 (Roman). See also 433883.
CHA	15	TL 433 883	TL4387/1/459-462	'Mound' on 1:10560 (at 43368835) is a barrow (D Hall) and shown on APs to be enclosed on three sides by ditches, and to lie at the end of a drove running from ?paddocks at 432883. Possibly a temple?
CHA	6	TL 436 880	BRJ 1-3, CQP 20	2 ring ditches at 43658806 and 43728806.
CHA	1	TL 433 890	EW 18, NH 11-12, BYA 51-52	Two small ring ditches at 43268806 and 43368902, major linear feature with attached rectilinear enclosures. Paddock system. See also WMB 11 (436893).
CHA	-	TL 448 842	RC8-EC 156, TL4584/1	Two barrow mounds at (OS sites) 44868422 and 44888426. These do not appear on D Hall's working 1:10560 sheet nor on the published figures.
DOD	-	TL 388 914	ANB 5-6, RC8-ED 191-193, 223-224	On SMR as 'earthworks' but really is the edge of Doddington island plus two recent field boundaries. Lies adjacent to ridge and furrow. Nothing added to 1:10560.
DOD	-	TL 406 906	BKJ 8-9	Possible shrunken village traces E of Doddington although not characteristic of such. Sketched at 1:10560.
DOD	-	TL 412 902	TL4190/1/385-386	Possible ditches tending to form enclosures. These lie in an area with geological disturbance and are more likely to be the latter. Sketched at 1:10560.
MAN	7	TL 476 928	AFN 40-1	10 small ring ditches (silt circles) and parallel ditched driveway which appears to run to MAN 5. Other circles to the N at 474931. See Fig 47.

GAZETTEER 2: features mapped from air photographs

Ph	S	NGR	Photo number	Description and comments
MAN	-	TL 474 931	TL4793/3	Three silt circles adjacent to roddon. Lie just to the N of others at 476928.
MAN	-	TL 480 932	RC8-CO 62-64	Probable turbaries. Very thin parallel silted features running to roddon at S end.
PCF	-	TL 333 805	RC8-ED 101-102	Small group of enclosures possibly associated with ridge and furrow lying to its S. Enclosures contain more detail than can be shown at 1:10560 but do not appear to be convincingly prehistoric or Roman. Sketched at 1:10560.
WAR	-	TL 339 817	BWN 9-11, RC8-ED 102-104	Earthworks of unclear nature, but including stream bed, linking to field called 'Chapel Head', this latter being a small hill (see 342816). Sketched at 1:10560.
WAR	-	TL 342 816	BYI 1-3	Natural 'hillfort' on small hill in a field called 'Chapel Head'. Links to earthworks in 339817. Nothing added to 1:10560.
WMB	-	TL 418 909	TL4190/2/281-282	Linear features unlikely to be archaeological. Not added to 1:10560.
WMB	-	TL 420 935	RC8-ED 119, 187	Earthwork bank (showing as a light band) running approximately E-W for 1 Km (416935 to 426934). Probably recent (see 423935). Sketched at 1:10560.
WMB	20	TL 423 935	TL4293/2/5-7	Linear ditches aligned on earthwork (420935) and forming a system running to the site of a pump house. They are probably recent drainage ditches. Part of site 20 lies on a high (lighter) patch of ground. Nothing added to 1:10560.
WMB	-	TL 434 896	BTN 2-4, TL4389/2/3-4	Small rectilinear enclosures separated from WMB 11 by modern drain but probably once associated.
WMB	11	TL 436 893	BTN 1-4	Part of a field/paddock system, plus small enclosures. Fields align with traces SW of CHA 1 (433890).
WMB	-	TL 437 925	TL4392/1/317-318	Enclosure system based on roddons plus a track and roddon retaining ditch.
WMB	21	TL 441 928	ADD 47-8, TL4392/2/463-464	Square enclosure located on silt of roddon.
WMB	22	TL 449 925	CCH 30-4, TL4492/1/387-393	Ditches following the course of, and running roughly perpendicular to, a roddon. Track runs S to linear features. Sketched additions from RCHM cover at 1:10560.

GAZETTEER 2: features mapped from air photographs

Ph	S	NGR	Phcto number	Description and comments
WMB	4	TL 455 919	RC8-CO 21-2, TL4591/1-4, TL4592/1/426-427	Isolated square enclosure on area of Bronze Age and Iron Age settlement. Geological cracks cover field but no other obvious archaeological features.
WMB	-	TL 451 926	CCH 30-4	2 ring ditches at 45159264 and 45169263 lying in a bend of a roddon.
WMB	-	TL 453 926	TL4592/2/402-405	Ditches flanking roddon and running perpendicular to it.
WMB	-	TL 450 931	CQF 34-35	1 ring ditch at 45089314.
WMB		TL 456 935	TL4693/3/408	A fragmented length (600m) of what appears to be a Roman road running east-west and aligned on Stonea Grange (to its west). Road shows as parallel side ditches which, in places, are double on both sides.
WMB	--	TL 459 931	TL4593/1/417-418, TL4693/4/420	Ditched enclosures (?paddocks) containing at least 15 silt circles none of which lie outside the enclosed areas (although the responsive crop also covers the same area!).
WMB	6	TL 454 941	TL4594/1/207-208	Possible traces of enclosure(s) although all may be geological. Proximity of site 6 makes the marks a little less dubious. Sketched at 1:10560.
WMB	7	TL 459 945	TL4594/2/412-413	Apparently two superimposed systems: one being a possible track plus attached enclosures (showing as a positive mark), the other being possible field traces (as negative mark). Former may be acceptable as archaeological and relates to features to the E.
WMB	25	TL 468 925	AFN 39	Traces of ditches making a complex of very small enclosures.
WMB		TL 460 934	TL4693/4/422	A moat-like feature showing as a broad bank. The sixteen foot drain cuts the NW corner of the feature.
WMB	-	TL 466 935	TL 4693/1	One ring ditch (at 46679355) plus linear features - some genuine, some geological.
WMB	-	TL 461 946	BCC 3-4, TL4694/1/379-383	One ring ditch at 46169466 and linear ditches. RCHM photos show barrow as slight mound with very blurred ditch. Adjacent roddons. See 459945.
WMB	23	TL 472 935	BOU 86-7	One rectangular and one ovate enclosure.

Page no. 00006
20/01/92

GAZETTEER 2: features mapped from air photographs

Ph	S	NGR	Photo number	Description and comments
WWN	6	TL 218 824	RAF/D/33, BHS 53-55, RC8-EE 229-231	Apparent large curvilinear enclosure (but more probably soil marks surrounding a medieval island) with droveways running NW and SE.