



Testvorlage für die Mikroverfilmung

Schriftgrößenmuster

Linienmuster

50	Kodak-Mikrofilm KODAK-MIKROFILM	0.25 mm	-----
60	Kodak-Mikrofilm KODAK-MIKROFILM	0.30 mm	-----
70	Kodak-Mikrofilm KODAK-MIKROFILM	0.35 mm	-----
80	Kodak-Mikrofilm KODAK-MIKROFILM	0.40 mm	-----
90	Kodak-Mikrofilm KODAK-MIKROFILM	0.45 mm	-----
100	Kodak-Mikrofilm KODAK-MIKROFILM	0.50 mm	-----
110	Kodak-Mikrofilm KODAK-MIKROFILM	0.55 mm	-----
120	Kodak-Mikrofilm KODAK-MIKROFILM	0.60 mm	-----
130	Kodak-Mikrofilm KODAK-MIKROFILM	0.65 mm	-----
140	Kodak-Mikrofilm KODAK-MIKROFILM	0.70 mm	-----
150	Kodak-Mikrofilm KODAK-MIKROFILM	0.75 mm	-----
160	Kodak-Mikrofilm KODAK-MIKROFILM	0.80 mm	-----
170	Kodak-Mikrofilm KODAK-MIKROFILM	0.85 mm	-----
180	Kodak-Mikrofilm KODAK-MIKROFILM	0.90 mm	-----
190	Kodak-Mikrofilm KODAK-MIKROFILM	0.95 mm	-----
200	Kodak-Mikrofilm KODAK-MIKROFILM	1.00 mm	-----

MICROCOPY RESOLUTION TEST CHART

(ANSI and ISO TEST CHART No. 2)



The South-West Fen Dyke Survey Project 1982-86

**by C.A.I. French
and F.M.M. Pryor**

with contributions by
M. Armour-Chelu, A. Challands,
J. Downes, D.A. Gurney, D.N. Hall,
R.H. Middleton, R.G. Scaife
and M. Taylor

illustrations by
C.A.I. French, A. Challands, J. Downes
and R. Parkin

and photographs by
C.A.I. French and F.M.M. Pryor

East Anglian Archaeology
Report No. 59, 1992

Fenland Archaeological Trust

EAST ANGLIAN ARCHAEOLOGY
REPORT NO.59, 1992

Published by
Fenland Archaeological Trust,
Flag Fen Excavation,
Fourth Drove,
Fengate,
Peterborough, PE1 5UR

in conjunction with
The Fenland Project Committee and
The Scole Archaeological Committee

Editor: Stanley West
EAA Managing Editor: Jenny Glazebrook

Scole Editorial Sub-Committee:
David Buckley, County Archaeologist, Essex Planning Department,
Keith Wade, County Archaeological Officer, Suffolk Planning Department,
Peter Wade-Martins, County Field Archaeologist, Norfolk Museums Service
Stanley West

Typeset in Times Roman by ??
Printed by ??

©FENLAND ARCHAEOLOGICAL TRUST 1992

ISBN 0 9520616 0 0

for details of *East Anglian Archaeology*, see last page

This volume is published with the aid of a grant from the Historic Buildings
and Monuments Committee for England

Cover Illustration

The buried peninsula at Crowtree Farm, Dyke 14 (Site 1)
(Photo: Francis Pryor)

List of Microfiche Photographs

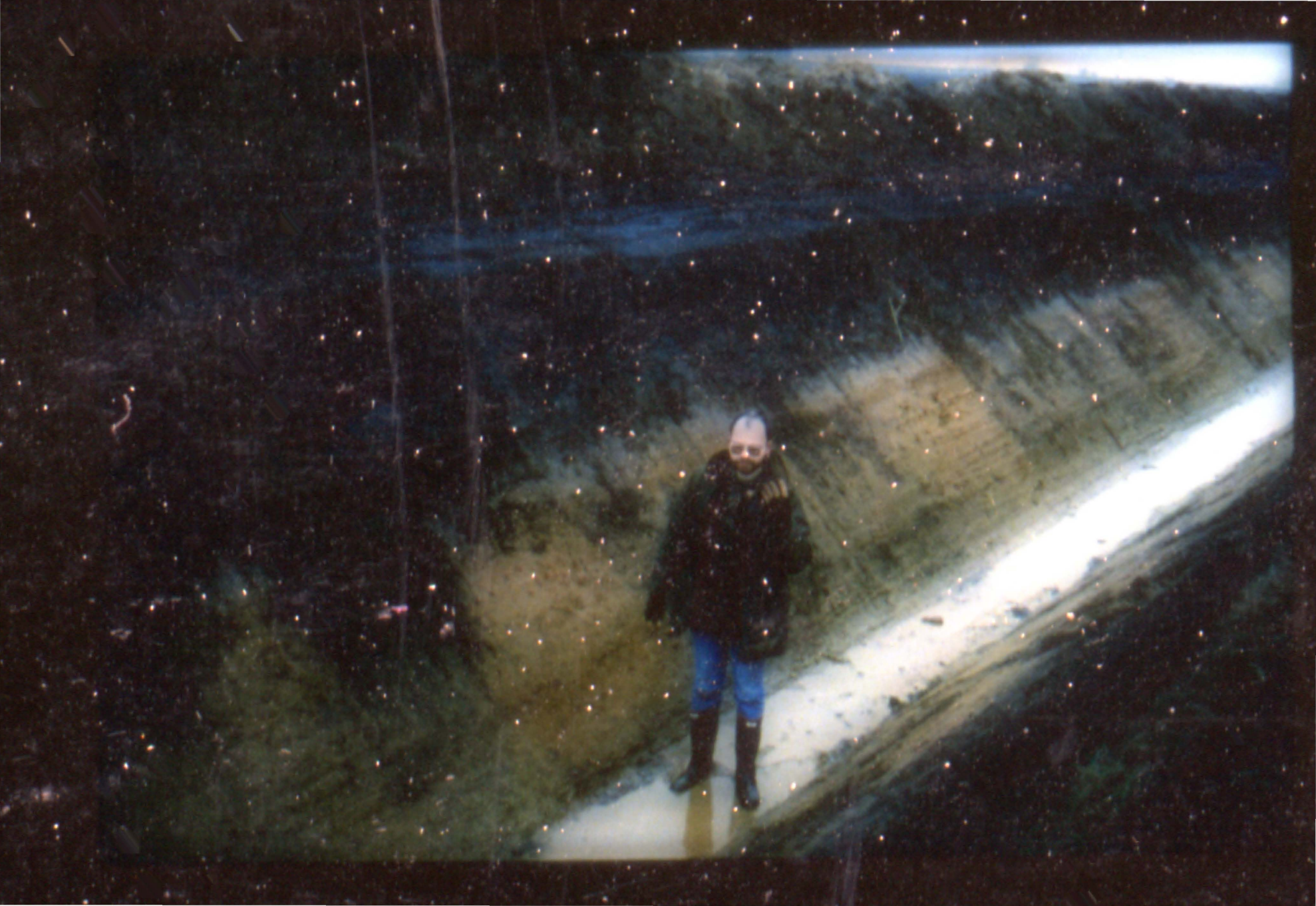
- | | | | |
|--------|---|--------|---|
| Pl. 1 | Dyke 14 : profile 1 | Pl. 41 | Dyke 53 : general view west from profile 1 |
| Pl. 2 | Dyke 14 : profile 11 | Pl. 42 | Dyke 53 : general view to west from profile 12 |
| Pl. 3 | Dyke 14 : profile 20; Site 1 | Pl. 43 | Dyke 9 : profile 2, sample 1 : Ap fabric 2; CPL; 2mm |
| Pl. 4 | Dyke 14 : profile 25 | Pl. 44 | Dyke 9 : profile 2, sample 1 : Ap fabric 1; CPL; 4.25mm |
| Pl. 5 | Dyke 34 : profile 4 | Pl. 45 | Dyke 9 : profile 2, sample 3 : Ap fabric 2; CPL; 2mm |
| Pl. 6 | Dyke 35 : profile 2 | Pl. 46 | Dyke 9 : profile 2, sample 2 : A fabric 2; CPL; 2mm |
| Pl. 7 | Dyke 45 : profile 1 | Pl. 47 | BoF Site 7 : profile 2, sample 3 : Ap fabric 1; CPL; 2mm |
| Pl. 8 | Dyke 45 : profile 3 | Pl. 48 | BoF Site 7 : profile 2, sample 3 : Ap fabric 2; PPL; 2mm |
| Pl. 9 | Dyke 46 : profile 2; Site 2 | Pl. 49 | BoF Site 7 : profile 2, sample 3 : heterogeneous mix of fabrics; PPL; 4.25mm |
| Pl. 10 | Dyke 47 : profile 3 | Pl. 50 | BoF Site 7 : profile 2, sample 3 : Ap fabric 2; PPL; 2mm |
| Pl. 11 | Dyke 48 : profile 3 | Pl. 51 | BoF Site 7 : profile 2, sample 1 : partial channel infill of organic fine material; PPL; 4.25mm |
| Pl. 12 | Dyke 49 : profile 4 | Pl. 52 | BoF Site 7 : profile 2, sample 1 : iron infill of void; PPL; 2mm |
| Pl. 13 | Dyke 1 : profile 4 | Pl. 53 | Dyke 41 : profile 2, sample 1 : Eb horizon; CPL; 2mm |
| Pl. 14 | Dyke 2 : profile 2 | Pl. 54 | Dyke 41 : profile 2, sample 3 : intrusive bedded fabric in Bt horizon; CPL; 4.25mm |
| Pl. 15 | Dyke 3 : profile 1 | Pl. 55 | Dyke 41 : profile 2, sample 3 : non-laminated dusty clay in Bt horizon; CPL; 2mm |
| Pl. 16 | Dyke 12 : profile 8 | Pl. 56 | Dyke 1 : sample 1 : Eb horizon; CPL; 2mm |
| Pl. 17 | Dyke 15 : profile 2 | Pl. 57 | Dyke 1 : sample 2 : laminated dusty clay in Bt horizon; PPL; 2mm |
| Pl. 18 | Dyke 11 : profile 9 | Pl. 58 | Dyke 1 : sample 2 : Bt fabric; CPL; 4.25mm |
| Pl. 19 | Borough Fen Site 10d : barrow section | Pl. 59 | Crowtree Farm : Trench 2, sample 2 : Bt fabric; PPL; 2mm |
| Pl. 20 | Borough Fen Site 7/Dyke 5 : profile 3; features 1 and 2 | Pl. 60 | Dyke 46 : profile 2, sample 2 : striated Bt fabric; CPL; 2mm |
| Pl. 21 | Borough Fen Site 7/Dyke 5 : profile 4 | | |
| Pl. 22 | Dyke 50 : profile 5 | | |
| Pl. 23 | Dyke 44 : profile 6 | | |
| Pl. 24 | Dyke 41 : profile 2; Site 3 | | |
| Pl. 25 | Dyke 41 : profile 6 | | |
| Pl. 26 | Dyke 42 : general view to east | | |
| Pl. 27 | Dyke 43 : profile 1 | | |
| Pl. 28 | Dyke 30 : profile 2 | | |
| Pl. 29 | Dyke 31 : profile 1 | | |
| Pl. 30 | Dyke 32 : profile 2 | | |
| Pl. 31 | Dyke 32 : profile 4 | | |
| Pl. 32 | Dyke 17 : profile 2 | | |
| Pl. 33 | Dyke 18 : profile 1 | | |
| Pl. 34 | Dyke 8 : profile 1; feature 1 | | |
| Pl. 35 | Dyke 8 : profile 9 | | |
| Pl. 36 | Dyke 9 : profile 1; feature 1 | | |
| Pl. 37 | Dyke 9 : profile 2; Site 5 | | |
| Pl. 38 | Dyke 9 : profile 12; Site 5 | | |
| Pl. 39 | Dyke 10 : profile 6; feature 5 | | |
| Pl. 40 | Dyke 10 : profile 10 | | |

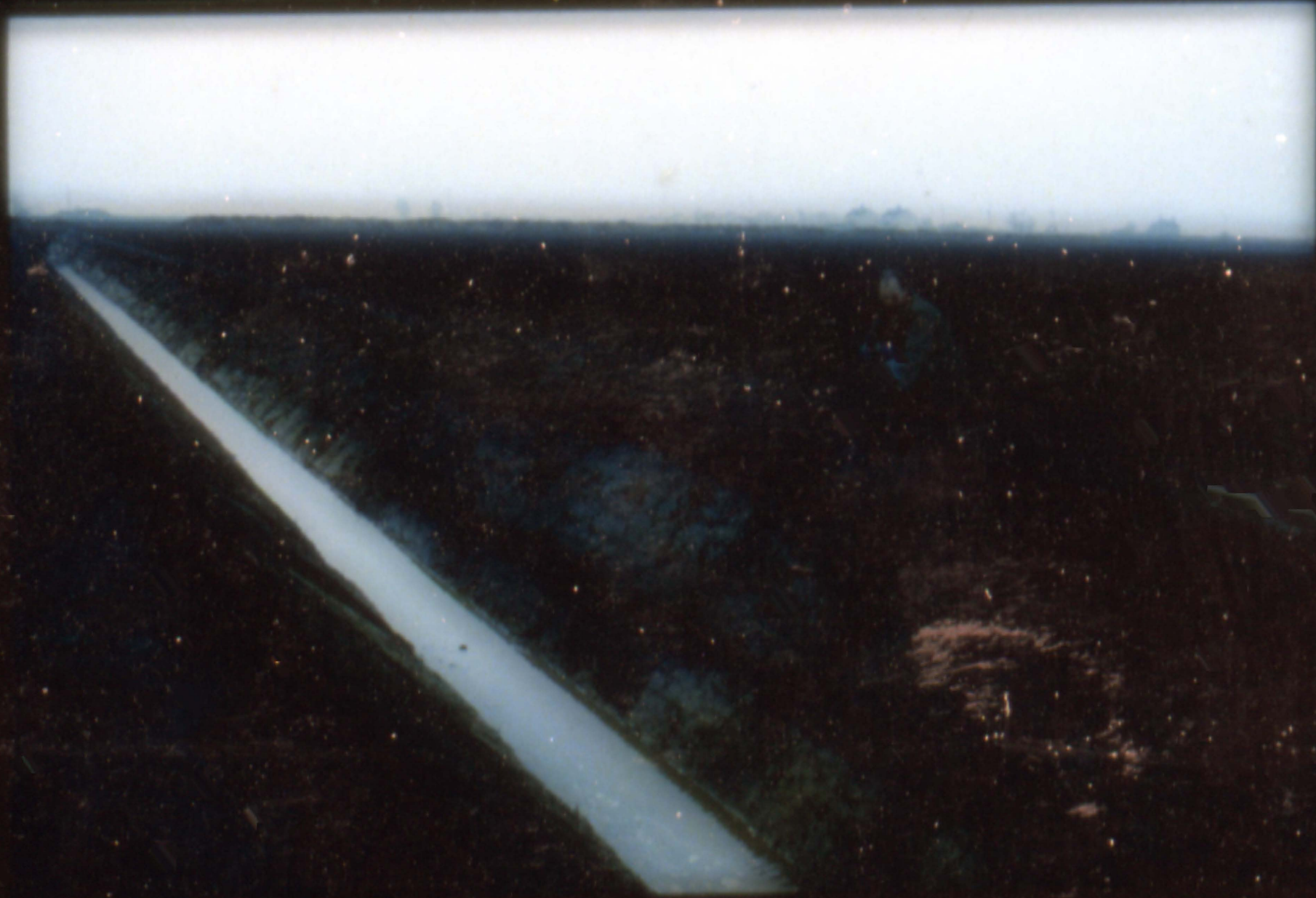










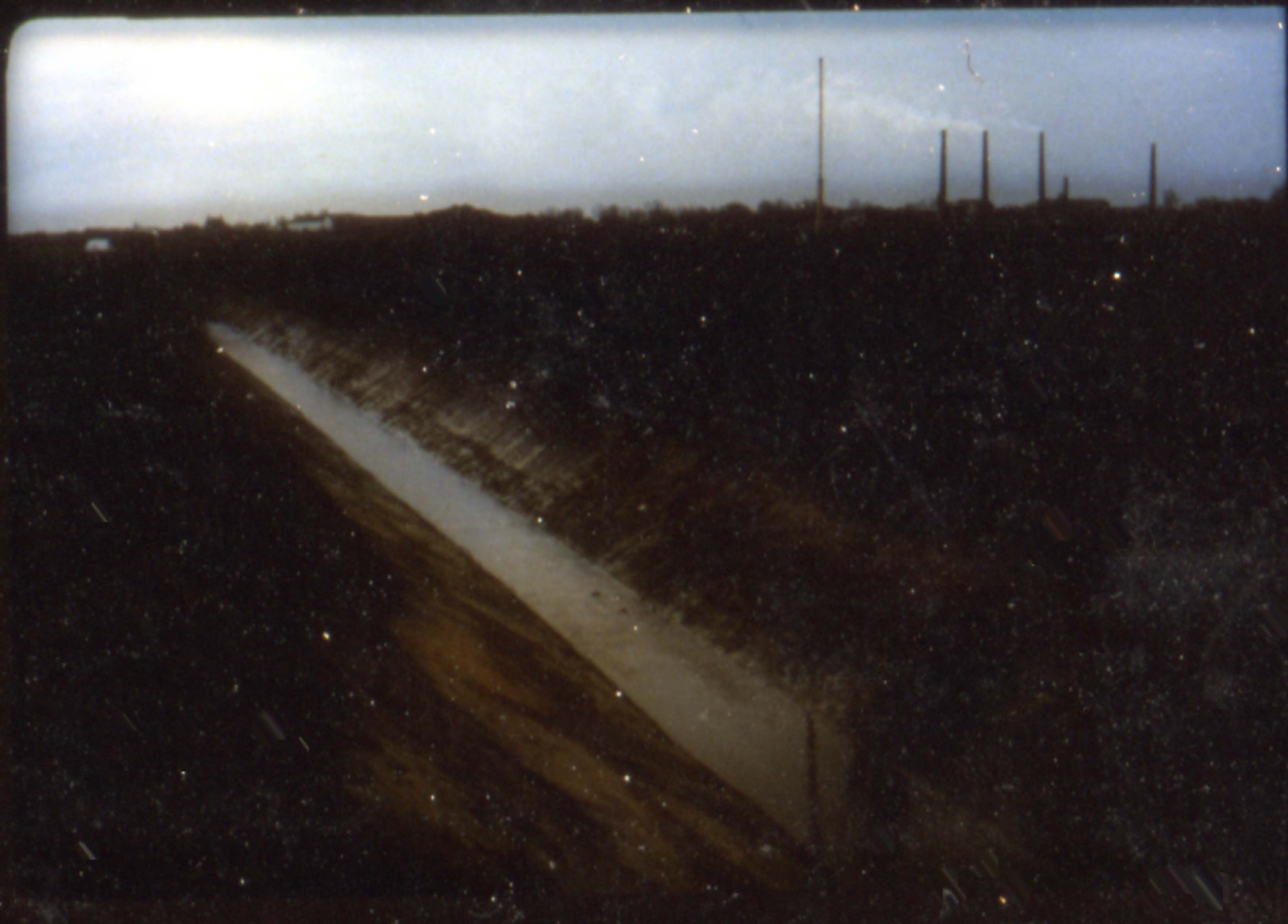


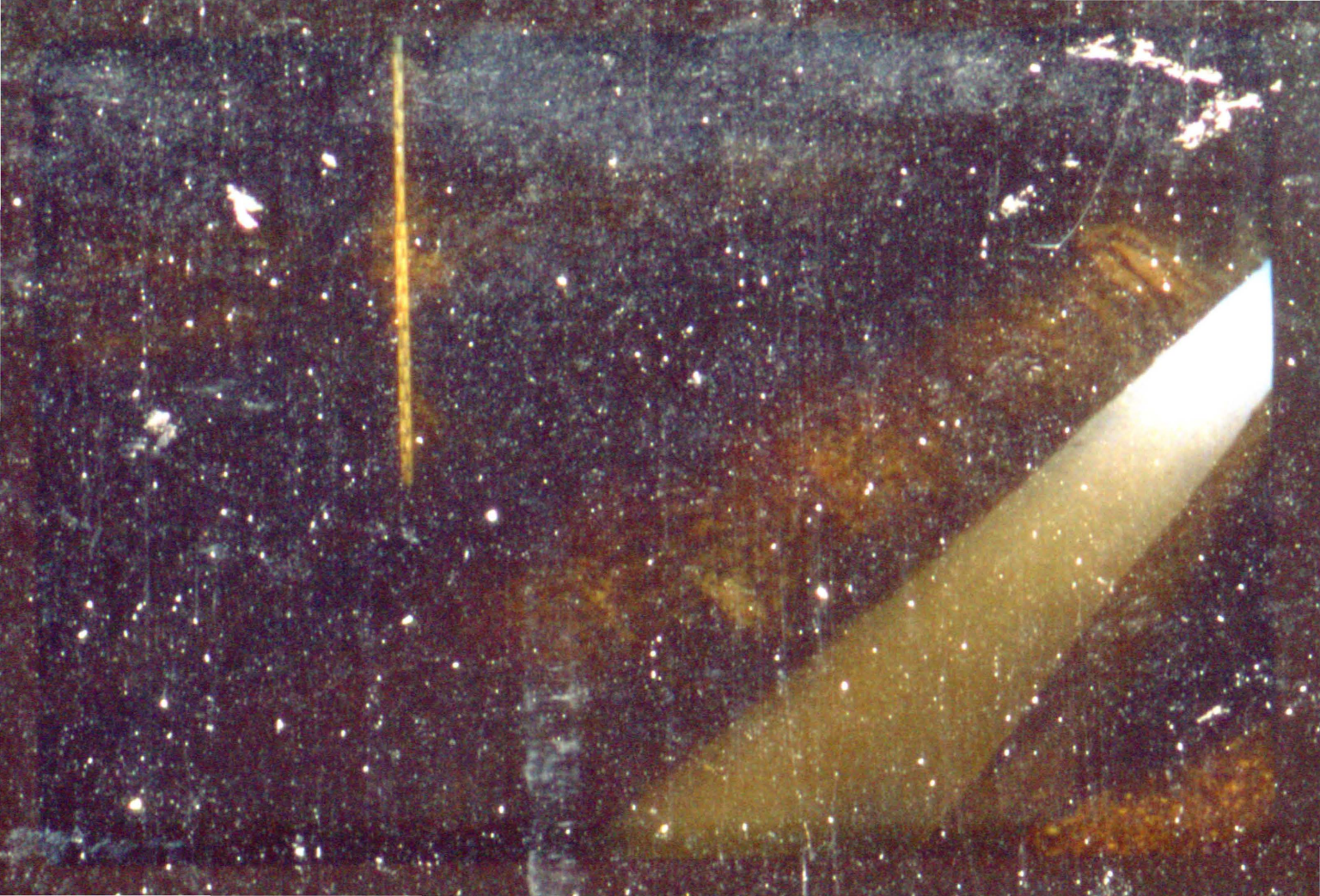








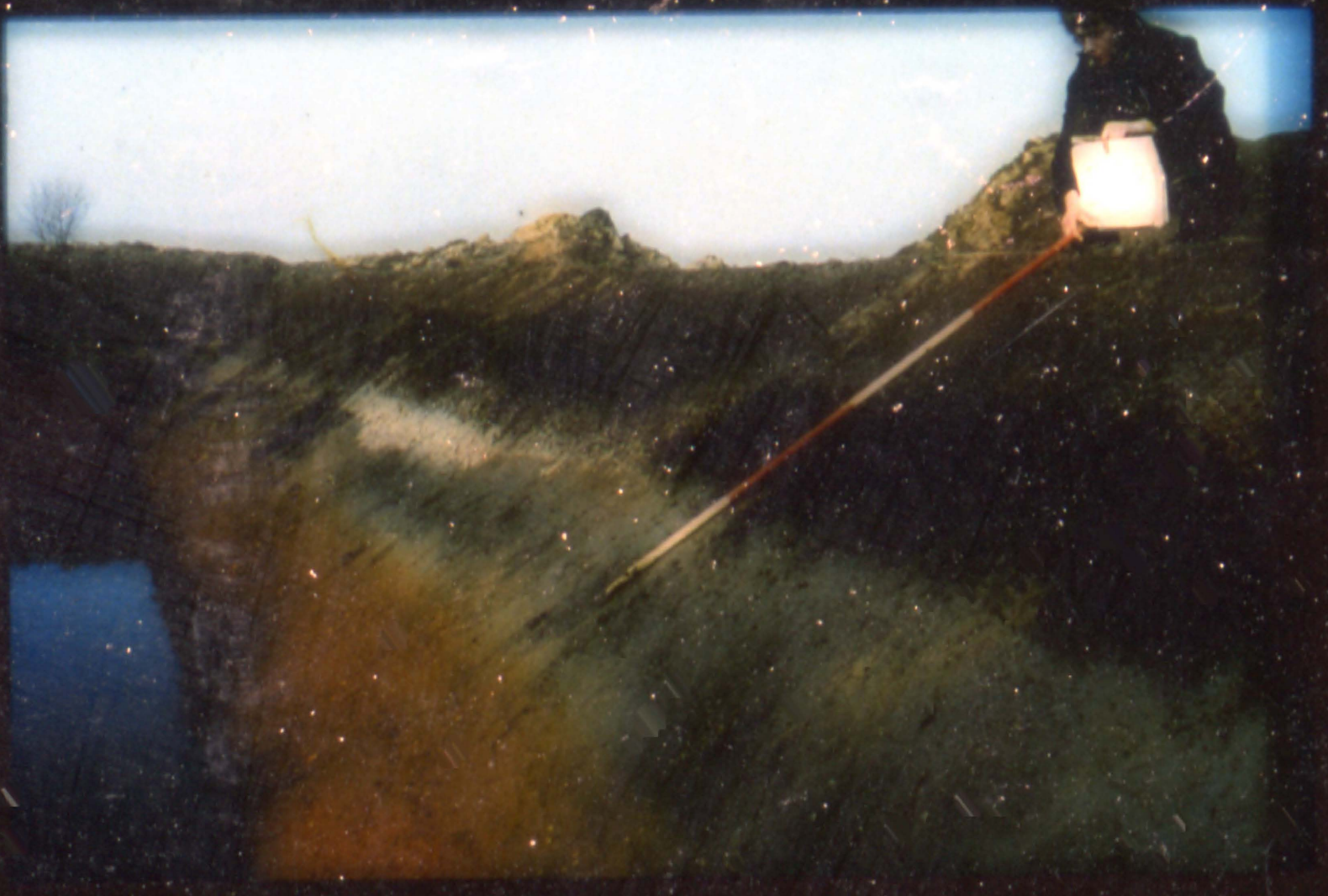


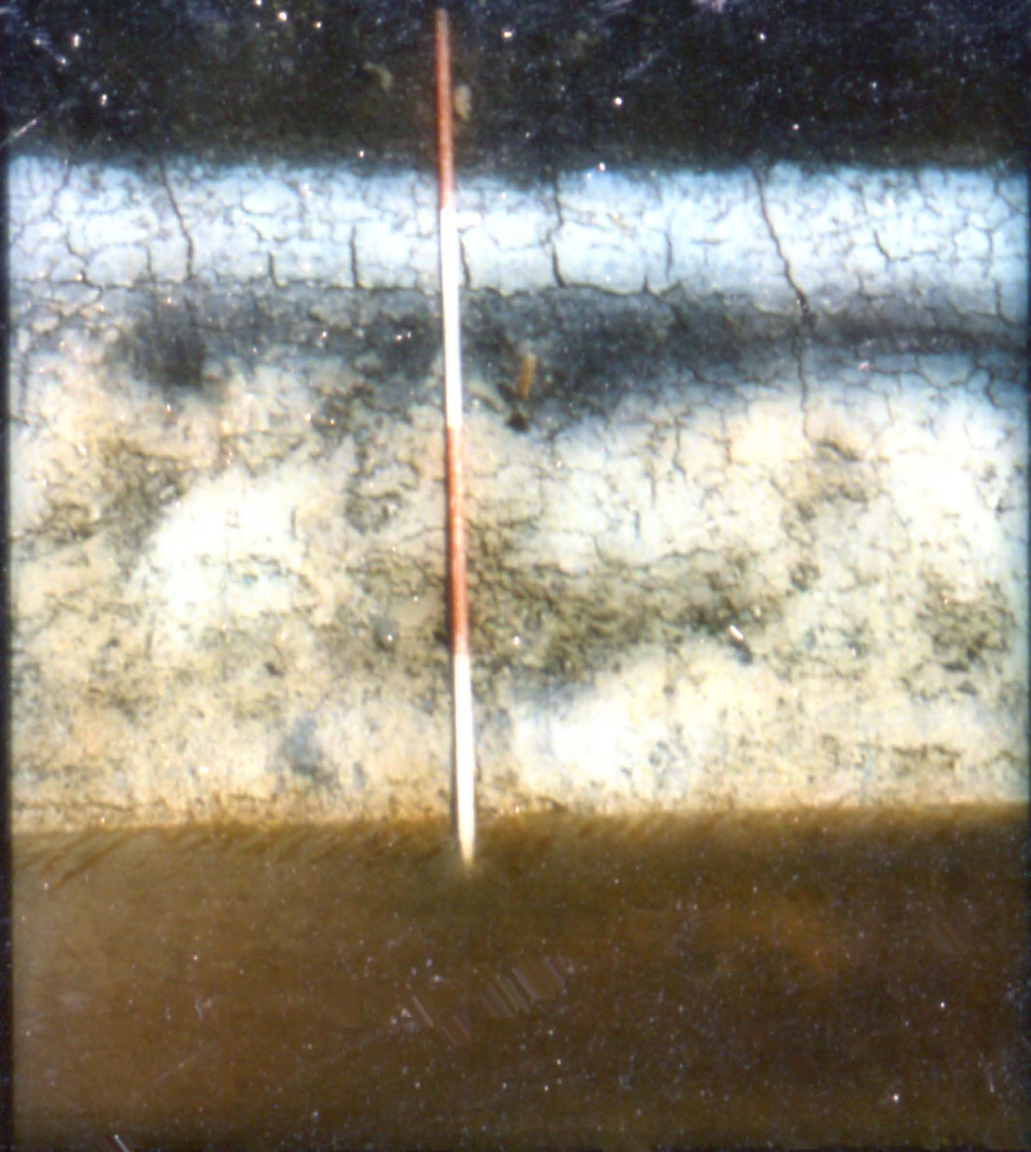


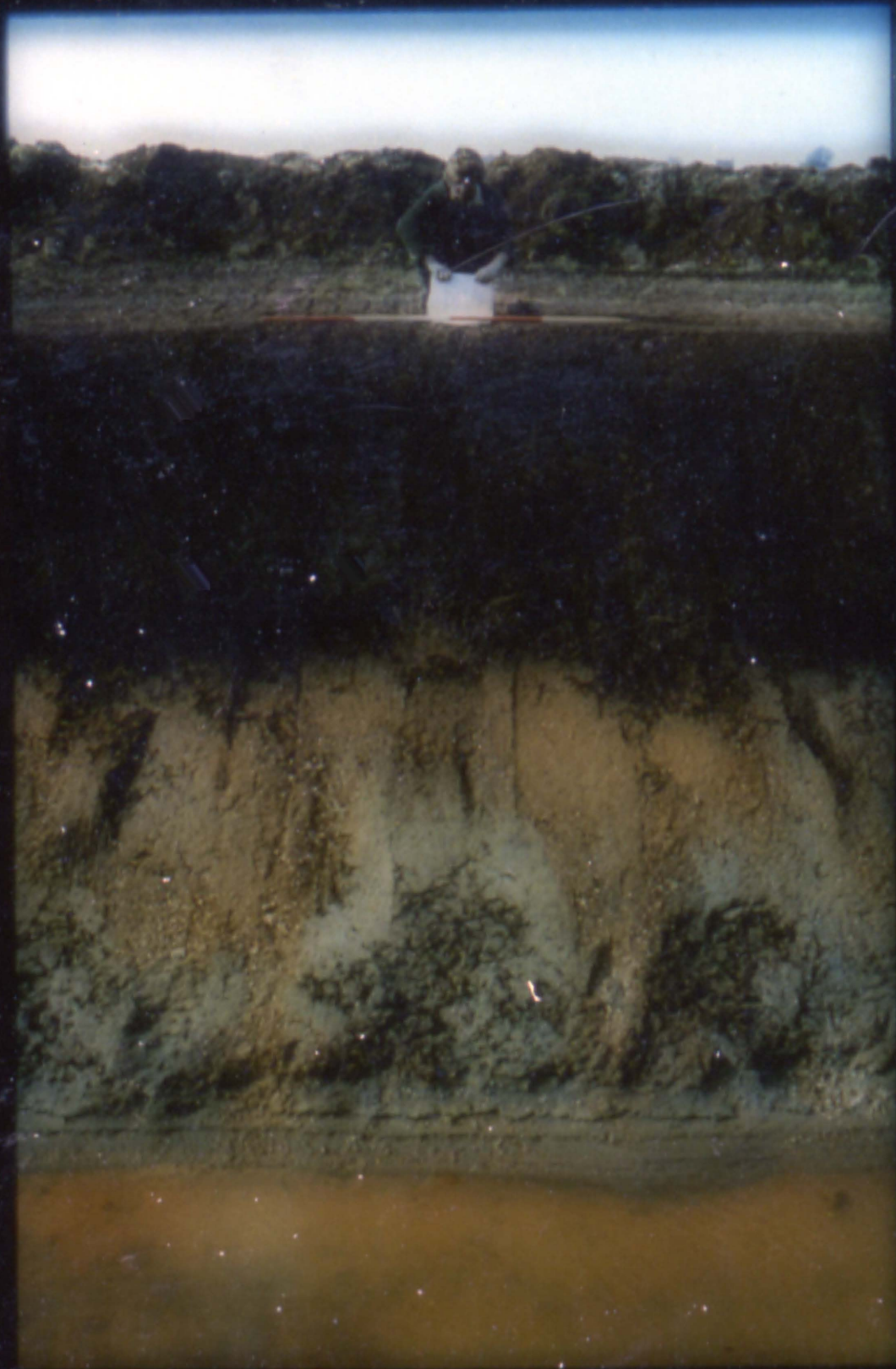


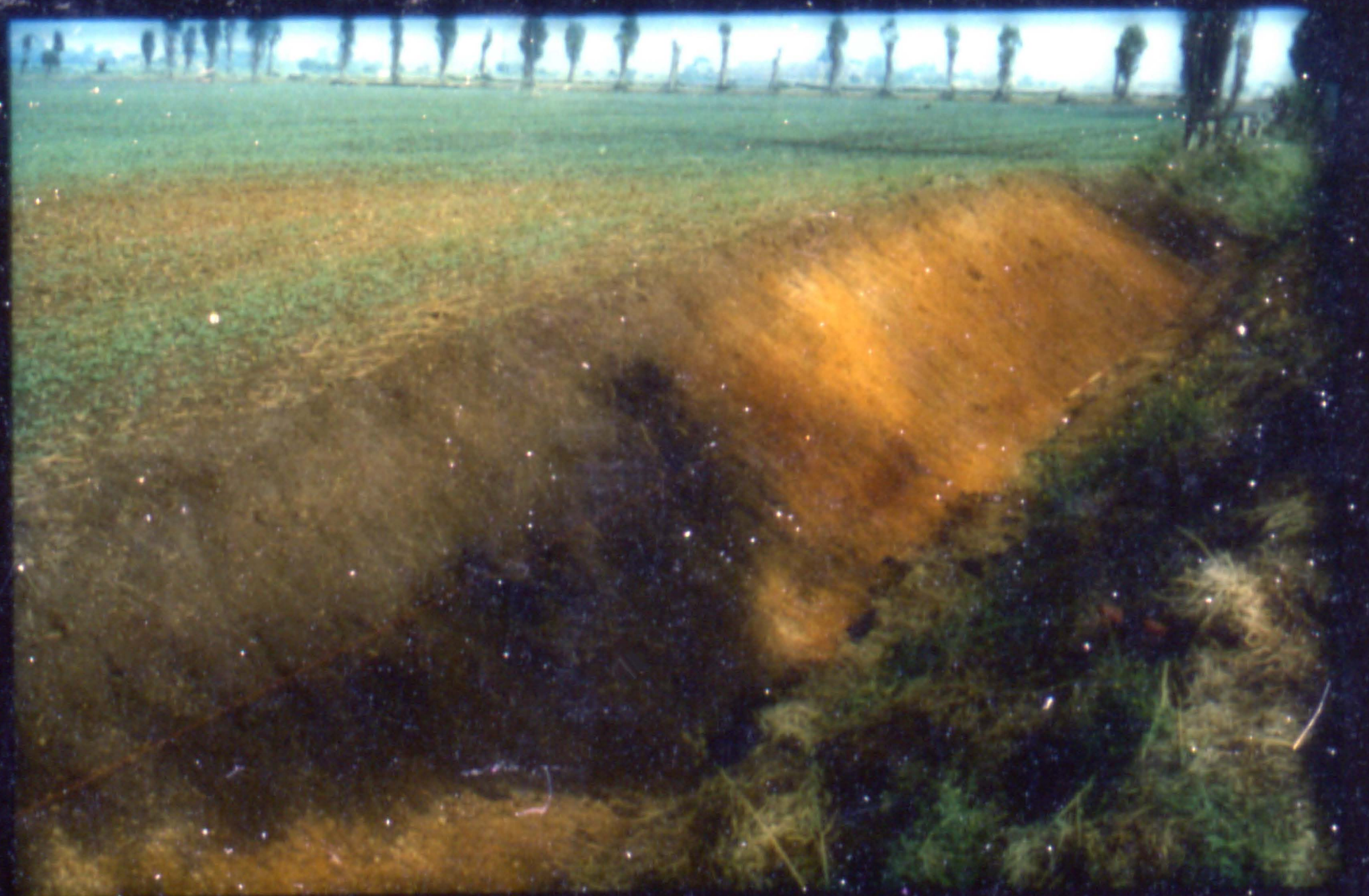


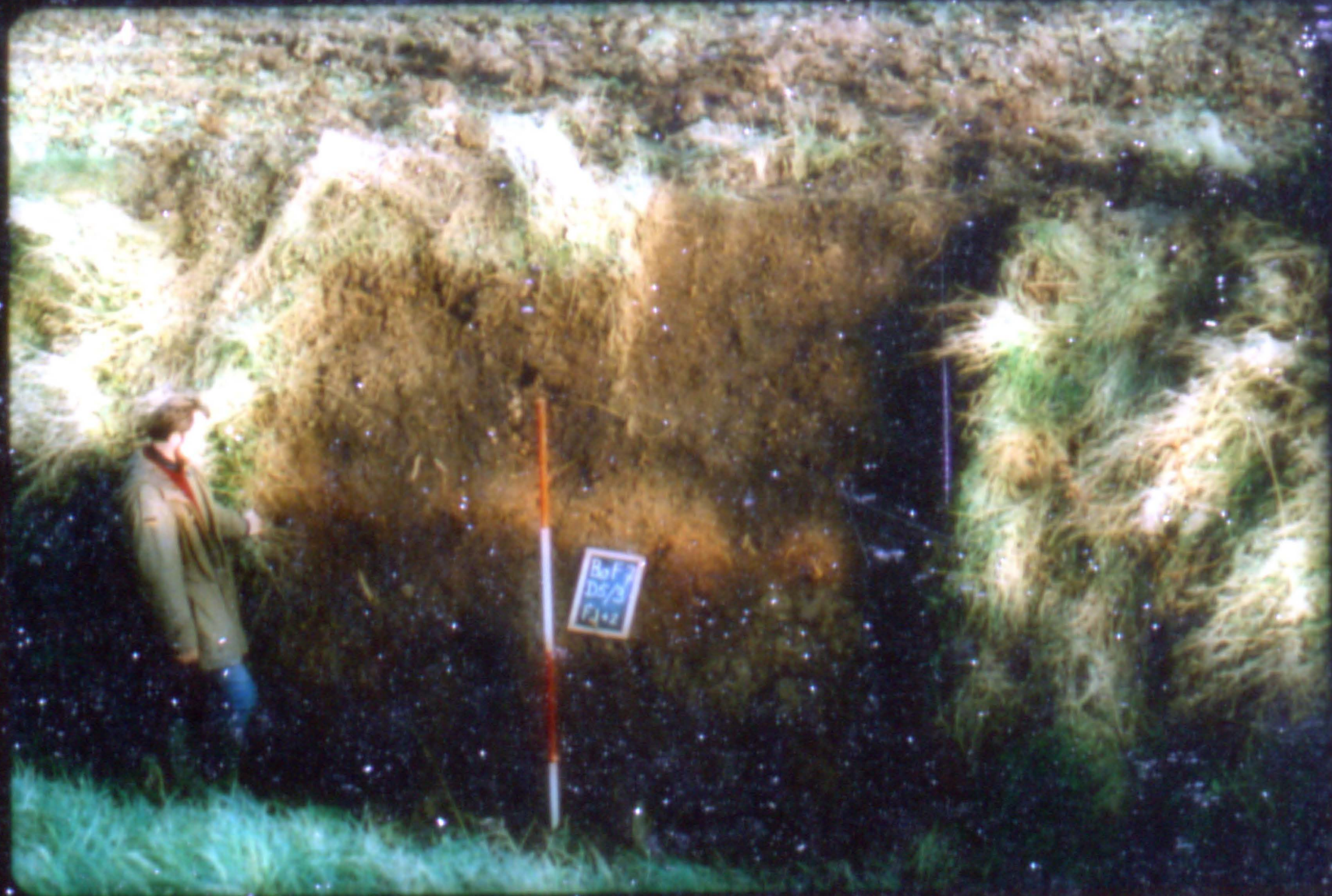






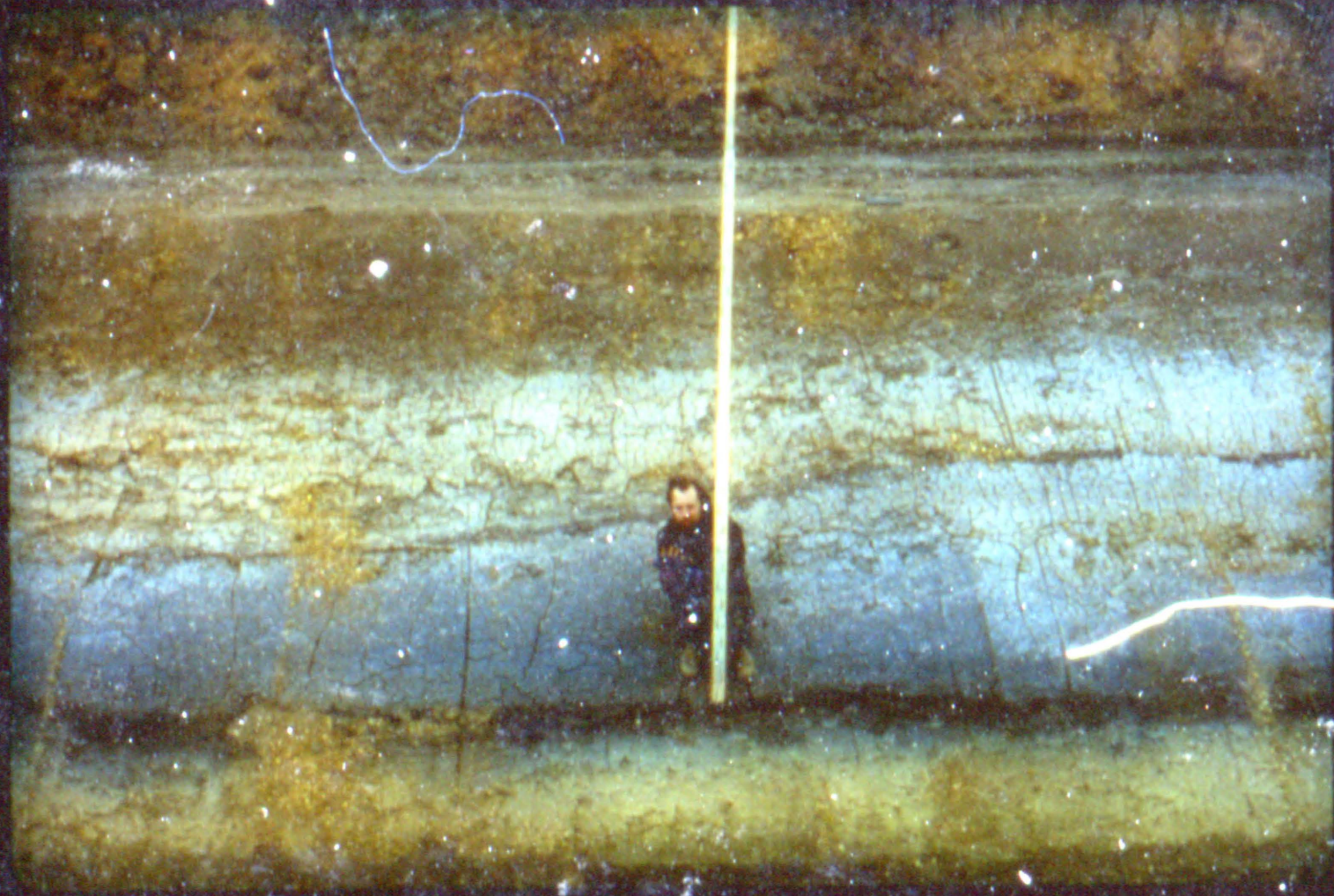










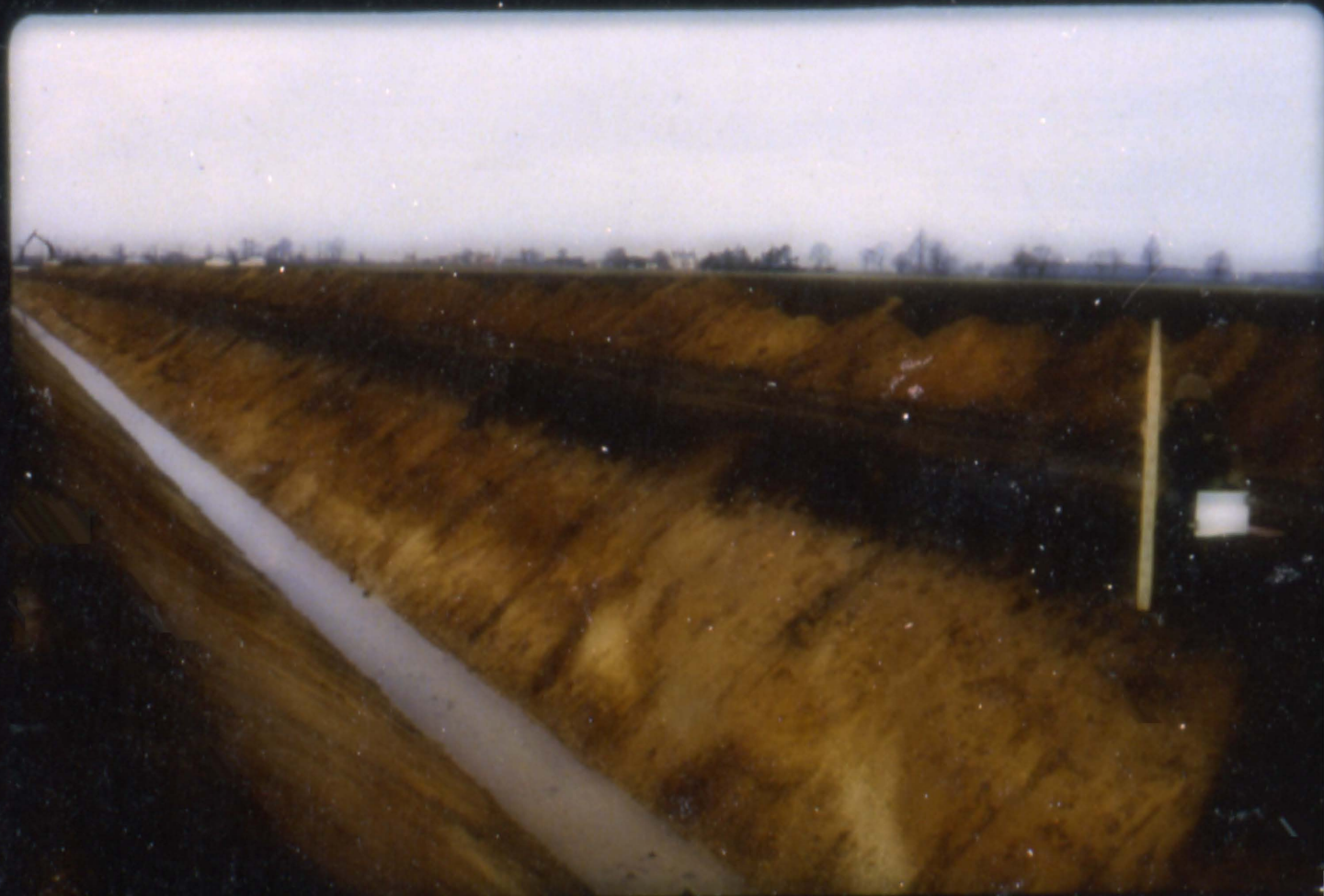


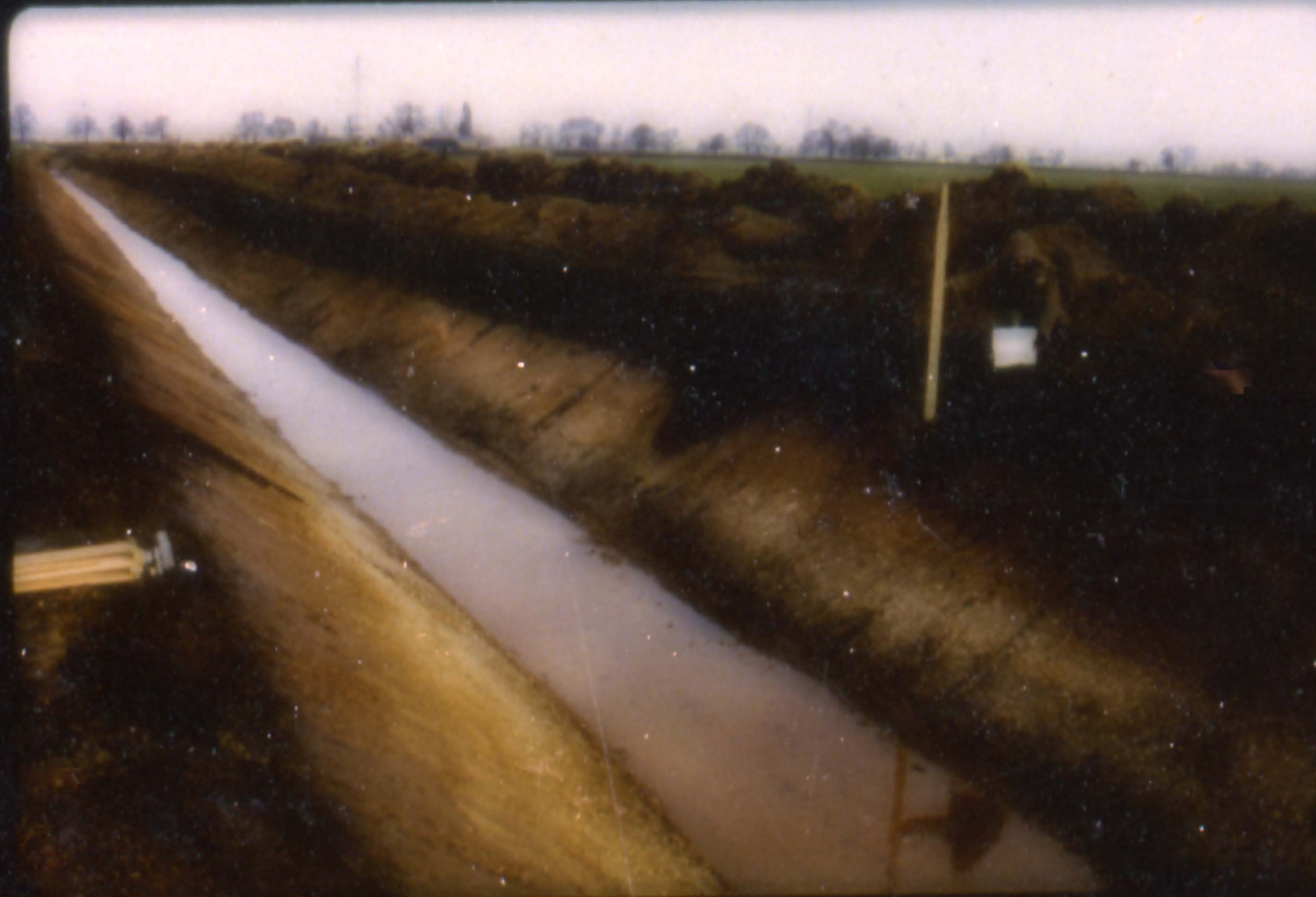


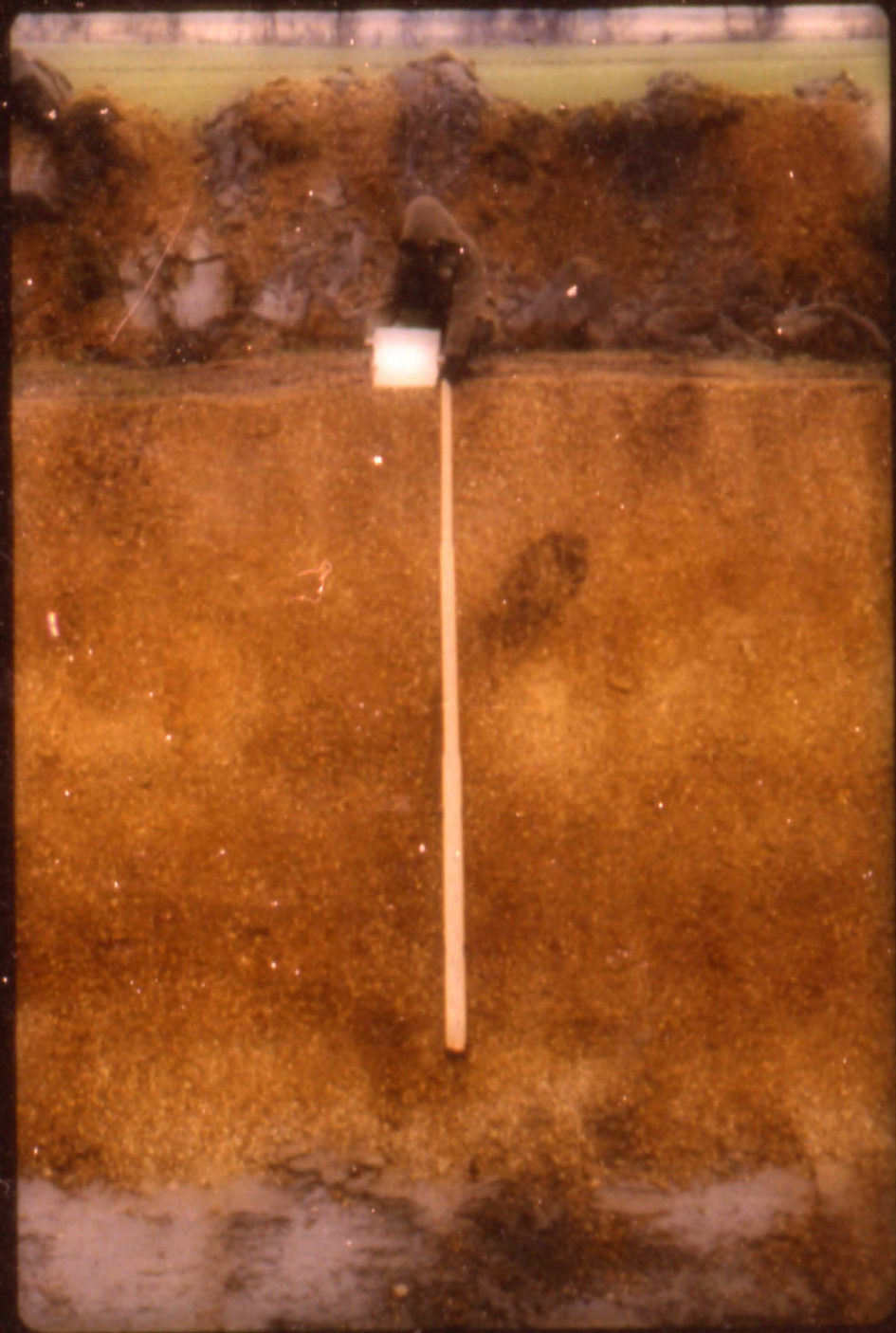




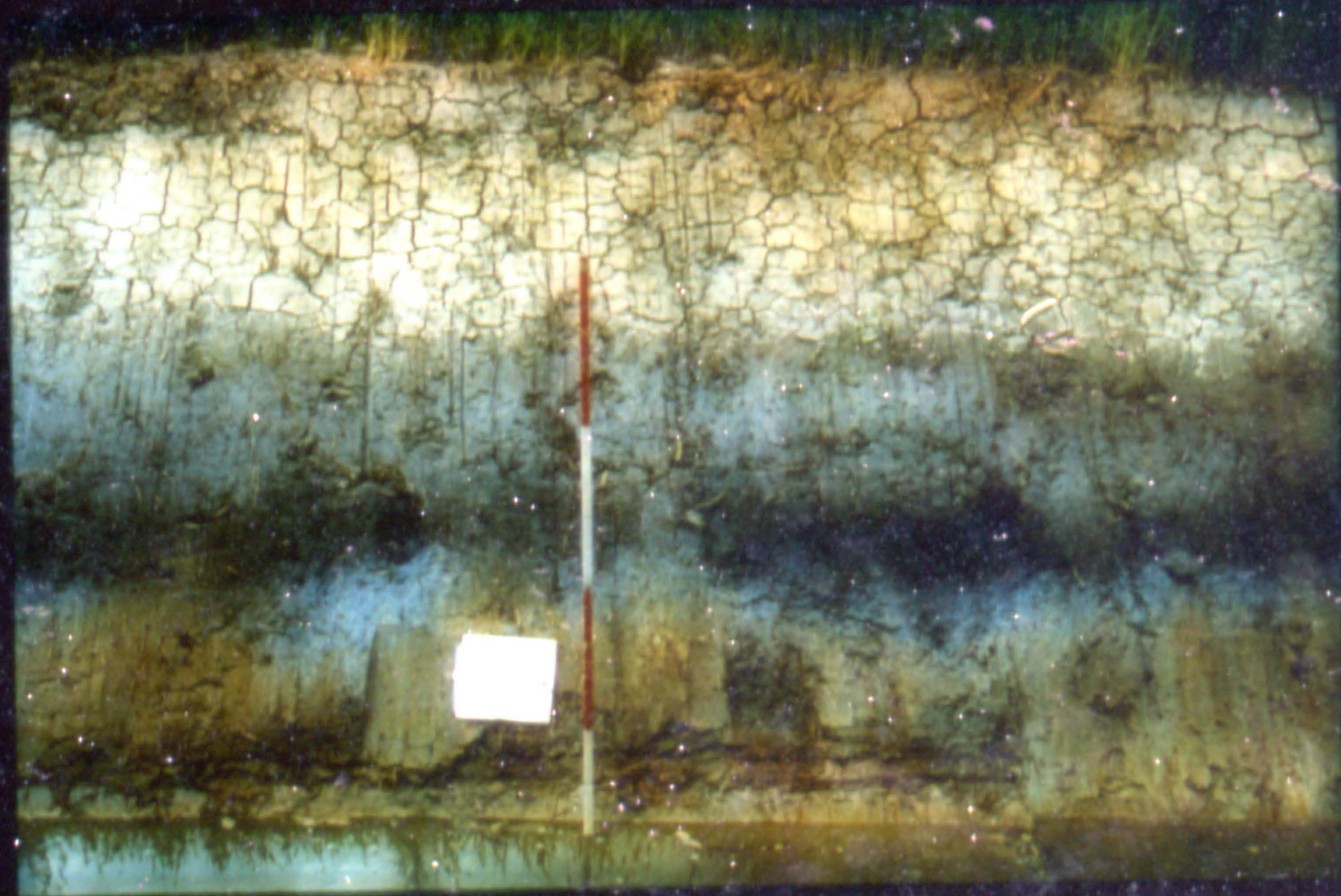




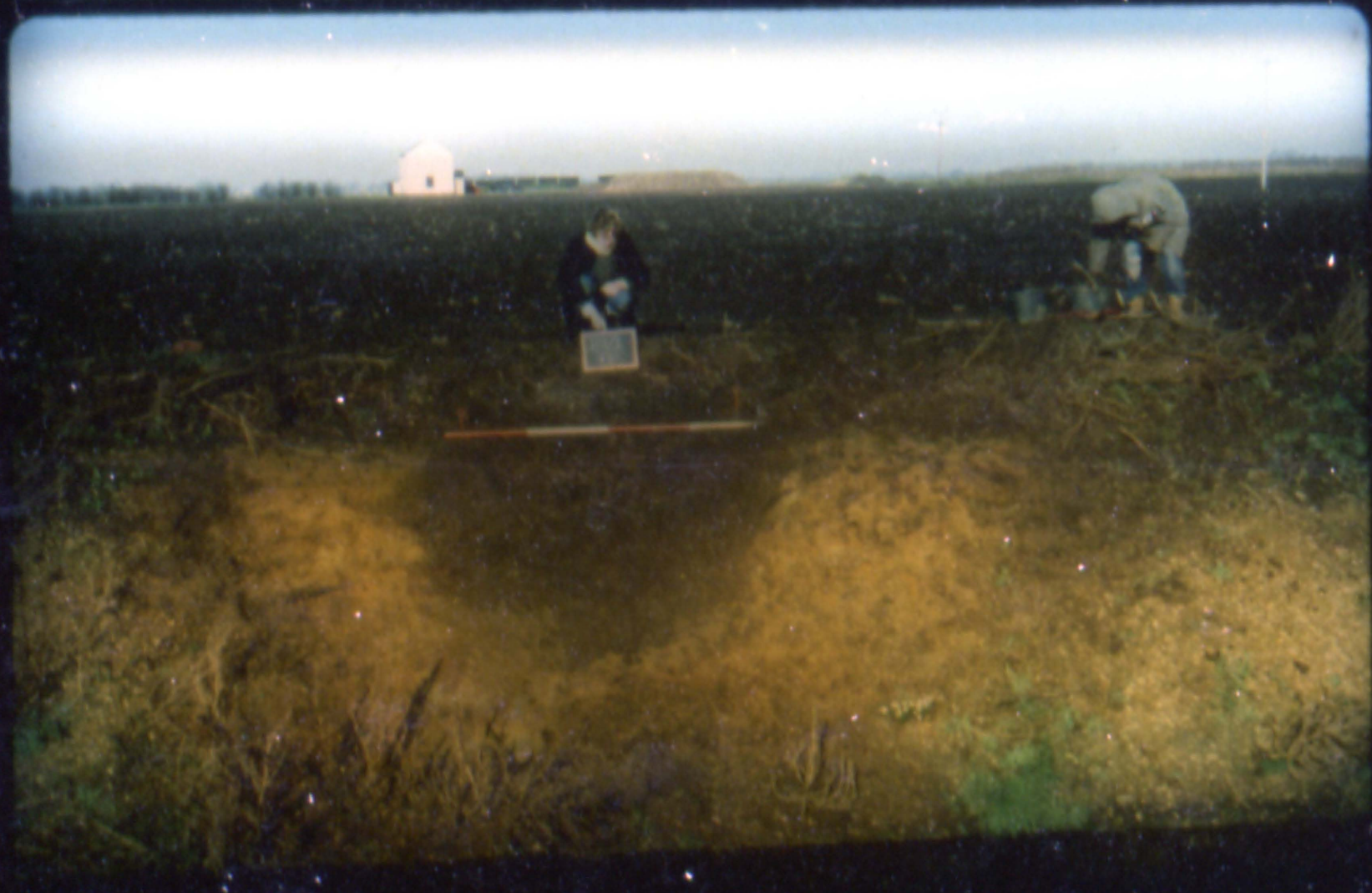












D8/9





DVI







E1076
FS



