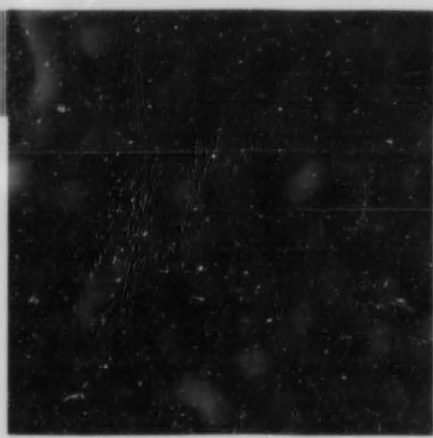
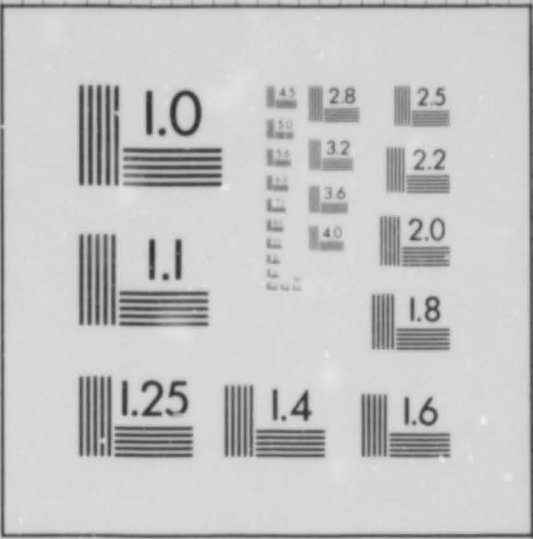


10 PT. ABCDEFGHIJKLMNOPQRSTUVWXYZ  
 abcdefghijklmnopqrstuvwxyz  
 1234567890

8 PT. ABCDEFGHIJKLMNOPQRSTUVWXYZ  
 abcdefghijklmnopqrstuvwxyz1234567890

6 PT. ABCDEFGHIJKLMNOPQRSTUVWXYZ  
 abcdefghijklmnopqrstuvwxyz1234567890

4 PT. ABCDEFGHIJKLMNOPQRSTUVWXYZ  
 abcdefghijklmnopqrstuvwxyz1234567890



2.5 lp/mm

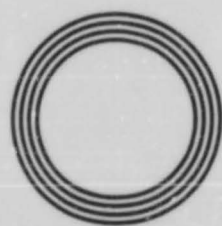
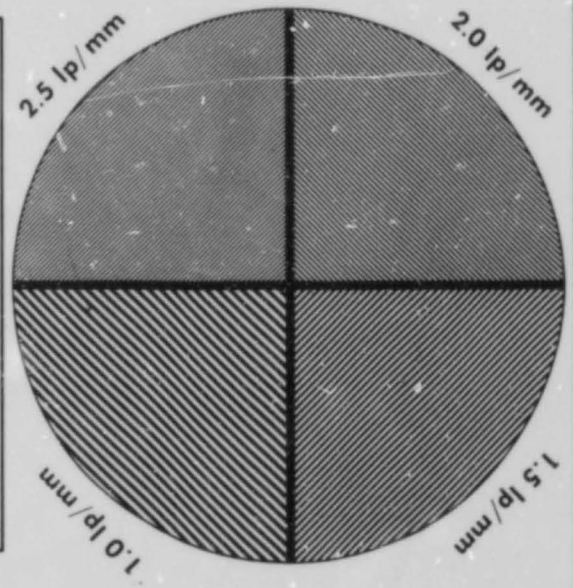
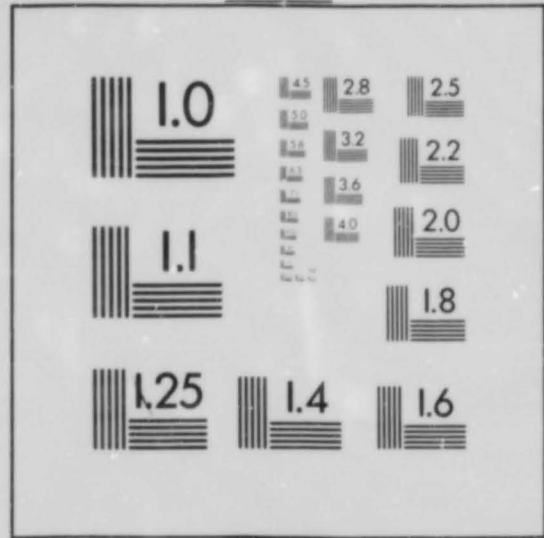
100mm

10 PT. ABCDEFGHIJKLMNOPQRSTUVWXYZ  
 abcdefghijklmnopqrstuvwxyz  
 1234567890

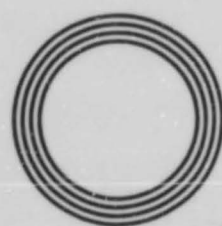
8 PT. ABCDEFGHIJKLMNOPQRSTUVWXYZ  
 abcdefghijklmnopqrstuvwxyz1234567890

6 PT. ABCDEFGHIJKLMNOPQRSTUVWXYZ  
 abcdefghijklmnopqrstuvwxyz1234567890

4 PT. ABCDEFGHIJKLMNOPQRSTUVWXYZ  
 abcdefghijklmnopqrstuvwxyz1234567890



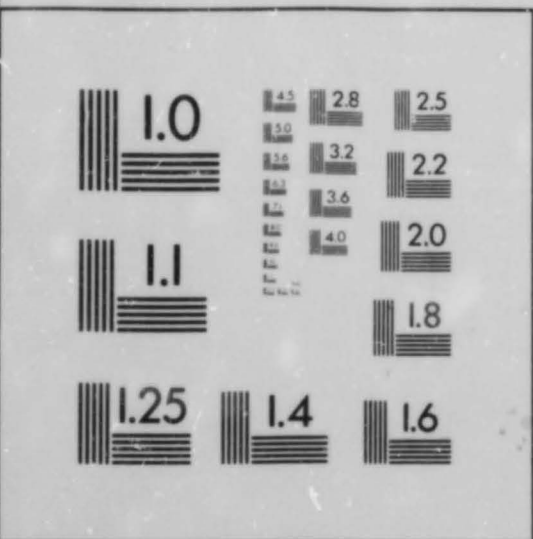
1.0 lp/mm



1.0 lp/mm



IMAGE SYSTEM  
 TEST TARGET  
 U.S. DEPARTMENT OF COMMERCE  
 PATENT AND TRADEMARK OFFICE

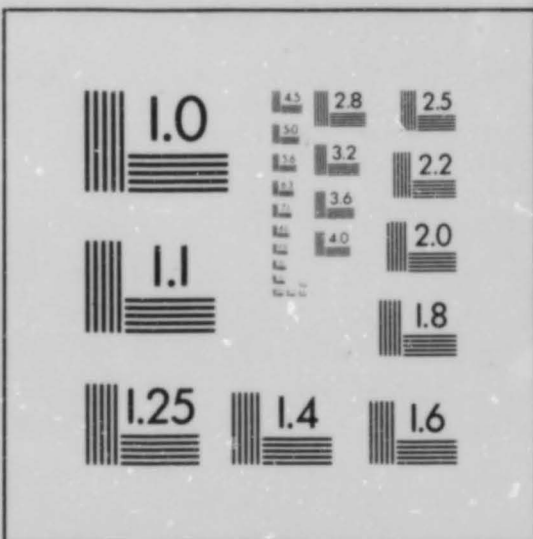


10 PT. ABCDEFGHIJKLMNOPQRSTUVWXYZ  
 abcdefghijklmnopqrstuvwxyz  
 1234567890

8 PT. ABCDEFGHIJKLMNOPQRSTUVWXYZ  
 abcdefghijklmnopqrstuvwxyz1234567890

6 PT. ABCDEFGHIJKLMNOPQRSTUVWXYZ  
 abcdefghijklmnopqrstuvwxyz1234567890

4 PT. ABCDEFGHIJKLMNOPQRSTUVWXYZ  
 abcdefghijklmnopqrstuvwxyz1234567890



**Illington: A Study  
of a Breckland  
Parish and its  
Anglo-Saxon  
Cemetery**

**by Alan Davison,  
Barbara Green and  
Bill Milligan**

with contributions by  
Steven Ashley, Andrew D. Russel and  
Calvin Wells

**East Anglian Archaeology  
Report No.63**

**Field Archaeology Division  
Norfolk Museums Service**

A2

EAST ANGLIAN ARCHAEOLOGY  
REPORT NO.63

Published by  
Field Archaeology Division  
Norfolk Museums Service  
Union House  
Gressenhall  
Dereham, Norfolk NR20 4DR

in conjunction with  
The Scole Archaeological Committee

Editor: Peter Wade-Martins  
EAA Managing Editor: Jenny Glazebrook

Scole Editorial Sub-Committee:  
David Buckley, County Archaeologist, Essex Planning Department  
Keith Wade, County Archaeological Officer, Suffolk Planning Department  
Peter Wade-Martins, County Field Archaeologist, Norfolk Museums Service  
Stanley West

Set in Times Roman by Joan Daniells using ® Ventura Publisher  
Printed by Crowes of Norwich

© FIELD ARCHAEOLOGY DIVISION

ISBN 0 905594 09 6

for details of *East Anglian Archaeology*, see last page

This volume is published with the aid of a grant from the Historic Buildings  
and Monuments Commission for England

**Cover Illustration**  
Aerial view of Illington, 1993 (TL 9489/J/FYC1)  
Photo: Derek A. Edwards

## Contents of Microfiche

Table of Contents			
Table 10	Summary of urns, their contents, fabric, and sherd movements	A4	Appendix II Detailed pottery fabric descriptions, by Andrew D. Russel B12
Appendix I	Cremation urn bone catalogue, by Calvin Wells	A5	Figs 50-57 Dendrograms showing relationships within fabric groups C1-D2
		B5	Table 15 Presence/Absence of inclusions D3

**Summary table of urns, their contents, fabric and sherd movements (Table 10)**

**Abbreviations**

*Corpus no.* This is the number in Myres' Corpus (Myres 1977).

*Pot no.*

- (a) These are the numbers published in the catalogue or listed in the ms. catalogue.
- (b) Number in [ ]: no sherds survive although the urn was plotted in the field plan.
- (c) FV: food vessel designated by G. Knocker. These did not contain bones.
- (d) u.crem.: un-urned cremation.
- (e) Numbers between 1-288 not allocated to urns (see Numbering of Urns in Introduction in main report) can be recognised by the fact they are followed by N.P. in plan/grid column and there are no details of fabric, etc.

*Old no.*

Occasionally some of the pots were re-numbered. If they were published under the original number this is recorded here. 'See...' in bold refers to a new number.

*Plan/Grid*

- (a) The grid number recorded for urns 1-288 indicates that the urn is plotted on the field plan.
- (b) ? before the number indicates that the position on the plan is uncertain.
- (c) NP: the pot is not plotted.
- (d) After no. 288, a grid number suggests the possible origin of the urn.

*Sherd movements*

Many boxes contained sherds, often from more than one pot, which had presumably been found associated with the main urn. In some cases, e.g. U.37, the 'urn' was only a small proportion of the sherds collected. In an attempt to sort out some of the numbering problems (see Numbering

of Urns in Introduction in main report) and to determine how many vessels had been buried, a record was kept by the authors of the sources of sherds found to belong to vessels excavated by G.K. or additional urns added to the sequence. This information is recorded in the columns 'Sherds to' and 'Sherds from'.

*Conventions*

- (a) The number before the / records the number of sherds moved (occasionally the number was not recorded and this is listed as 'no./').
- (b) The information after / records the source. The majority come from boxes labelled with an urn number, but there were collections from G.K.'s excavations labelled 'Surface' (here: 'surf.') or Grid VIII or around H3 (here: ar.H3).
- (c) The majority of the urns numbered 289 onwards were added to the sequence by the authors and Dr. Myres. Some of the sherds from the field walking surveys have been added. These are identified by the year (ie fw'74; fw'82;fw'88); where possible the position in the grid established by A. Rogerson (see Introduction in main report) is given, e.g. C2.
- (d) Sherds of five pots from 'a dark area 100 feet E.N.E. of the site' were sampled by A. Russel to see if they related to the pots from the urnfield. This area was dug by G.K. and suggested as the remains of a 'burning ghat' (see The excavation of the cemetery in Introduction in main report). These sherds are identified as '/ENE'.
- (e) Entries in brackets refer to 'urns' which are listed in the ms. catalogue but which were omitted from the published catalogue. Most were undecorated or sherds with linear decoration. The majority were analysed by A. Russel and are given in his tables of inclusions (see Pottery Fabric Analysis in main report).

*Material associated with urns*

Where the association of the bones and/or grave goods with any particular urn is doubtful, it is noted as 'a.d.' or '?' where the evidence is really dubious.

Table 10 Summary of urns, their contents, fabric, and sherd movements.

Corpus no.	Pot no.	Old no.	Plan/grid	Sherds to	Sherds from	Fabric no.	Stamp	Stamp group	Grave goods	Human bones	Animal bones
2218	1	-	I	-	1/surf.	44	x	-	-	x	-
-	【2】	-	I	-	-	-	-	-	-	-	-
-	3	-	I	2/4	-	63	-	-	x	x	-
2155	4	-	I	-	2/3;12 surf.	44	-	-	-	x	-
2215	5	-	I	1/6	-	11	x	5	x	x	x
2217	6	-	I	-	1/5;1/surf;1/D3'82	7	x	5	-	x	-
2139	7	-	I	-	-	80	x	1	-	x	-
2182	8(FV)	-	I	-	-	33	-	-	-	-	-
-	u.crem w.8	-	I	-	-	-	-	-	x	x	-
2258	9A	-	?II	-	-	81	x	-	-	x	-
2242	9B	-	?II	2/40;1/336;1/328	1/40;1/10	63	x	18	-	x	x
2146	10	-	II	( 1/9B;1/328;3/40; ) ( 1/35 )	2/40	69	x	1	-	-	-
-	【11】	-	II	-	-	-	-	-	x	-	-
-	【12】	-	II	-	-	-	-	-	-	-	-
2181	13	-	II	-	1/14	120	-	-	-	x	-
2204	14	-	II	1/13;1/329	-	4	x	20	?	-	-
2235	15	-	II	-	4/37	54	x	-	-	a.d.	-
-	16-20	-	N.P.	-	-	-	-	-	-	-	-
2200	21(FV)	-	II	-	-	8	x	-	-	-	-
2252	22	-	II	(1/330;1/331)	-	65	x	16	-	x	-
2127	23	-	II	-	-	68	x	1	x	x	-
-	24	-	II	-	1/surf.	63	x	17	-	x	-
2136	25	-	II	-	-	71	x	1	-	x	-
-	26	-	II	-	-	118	-	-	x	x	-
2184	27	-	II	-	-	9	-	-	-	x	-
2133	28	-	II	(2/332)	-	70	x	1	x	x	x
-	【29】(?FV)	-	II	-	-	-	-	-	?	-	-
-	【30】	-	II	-	-	-	-	-	-	-	-
-	31(FV)	-	II	4/333	1/surf;1/32	-	-	-	-	-	-
-	32	-	II	1/31;1/334	-	107	-	-	-	【x】	-
2249	33	-	II	-	-	123	x	-	x	x	-

AG

Corpus no.	Pot no.	Old no.	Plan/grid	Sherds to	Sherds from	Fabric no.	Stamp	Stamp group	Grave goods	Human bones	Animal bones	
2185	34A	-	?II	-	-	120	-	-	)	a.d.)	a.d.	-
2149	34B	-	?II	-	-	70	x	1	)	a.d.)	a.d.	-
2126	35(?FV)	-	II	2/41A;12/126	1/37;1/10	70	x	1	-	-	-	-
2256	36	-	II	-	2/37	33	x	-	-	-	-	-
-	37	See 15	II	( 4/15;1/35;2/36; )	-	-	-	-	-	a.d.	a.d.	-
-	-	-	-	( 26/336;5/337 )	-	-	-	-	-	-	-	-
-	38	-	II	-	-	-	-	-	-	-	-	-
2250	39	-	II	-	-	-	x	-	-	-	x	-
2240	40	-	II	1/9B;2/10	2/9B;3/10	63	x	28	x	-	-	-
2140	41A	-	?III	-	5/surf;2/35	68	x	1	)	a.d.)	a.d.	-
2244	41B	-	?III	-	6/surf.	68	x	-	)	a.d.)	a.d.	-
2174	42	-	III	-	6/surf.	104	x	-	-	x	x	-
2221	43	-	III	2/338;3/339;(2/340)	-	55	x	-	-	x	x	x
2137	44	-	III	-	-	69	x	1	-	-	x	-
-	45(FV)	-	III	-	-	49	-	-	-	-	-	-
2150	46	-	III	-	1/III;2/surf.	74	x	1	x	x	x	-
2212	47	-	III	-	-	9	x	-	x	x	x	-
-	48	-	III	2/49	-	66	x	-	x	x	x	-
2123	49	-	III	( 1/50;no./341; )	2/48;3/51	2	-	-	-	-	x	x
-	-	-	-	( 3/342;6/343 )	-	-	-	-	-	-	-	-
-	50(?FV)	-	III	1/51	1/49	44	-	-	-	-	-	-
2148	51	-	III	3/49	1/50;3/87A;2/III	15	x	-	-	x	-	-
2106	52	-	III	-	-	-	-	-	-	a.d.	a.d.	-
-	53-60	-	N.P.	-	-	-	-	-	-	-	-	-
2153	61	-	IV	2/61A	-	4	-	-	-	-	-	-
2237	61A	-	IV	-	2/61	3	x	23	-	-	-	-
2219	61A/64	61A	IV	-	all/64; 1/81	50	x	-	-	-	-	-
-	62	-	III	-	-	2	-	-	-	x	x	-
2220	63	-	III	1/345;1/346	-	44	x	19	-	-	-	-
-	64	-	IV	All/61A-2219	-	-	-	-	see 61A/64	-	-	-
2186	65	-	IV	-	All/66;1/surf.	57	-	-	-	-	-	-

A7

Corpus no.	Pot no.	Old no.	Plan/grid	Sherds to	Sherds from	Fabric no.	Stamp	Stamp group	Grave goods	Human hones	Animal bones
-	66	-	IV	All/65-1 sherd	-	-	-	-	-	-	-
-	67	-	IV	-	-	-	-	-	-	-	-
2141	68	-	IV	-	6/IV	69	x	1	-	x	x
2110	69	-	IV	-	-	72	x	2	x	x	x
2243	70	-	IV	(1/347)	-	14	x	25	-	x	-
2108	71	-	IV	-	12/89;1/84	14	-	-	-	x	x
-	72-80	-	N.P.	-	-	-	-	-	-	-	-
2259	81	-	V	( 4/82;1/85;1/90; ) ( 2/95;1/143;1/225; ) ( 6/348;2/349;4/350 )	-	16	x	19	-	x	-
2188	81a	See 348									
4073	81c	See 350									
-	82(FV)	87	V	( 1/349;1/352; ) ( 1/353;1/354;2/358 )	4/81	5	x	-	-	-	-
-	83	-	V	-	-	-	-	-	-	-	-
-	84	-	V	1/71;45/348	9/IV	2	x	24	-	x	-
2239	85	-	V	1/89;2/93;2/87A; 17/350;1/348	1/81;1/88;1/surf. )	17	-	-	-	-	-
-	86	-	-	-	-	-	-	-	x	-	-
2130	87A	-	V	( 3/51;(7/358;1/359; ) ( 1/360 )	2/85	71	x	1	x	x	-
-	88	See 93	V	6/93;1/227	-	-	-	-	-	-	-
-	89	-	V	12/71	1/85	5	-	-	x	x	-
-	90	-	V	-	1/81;2/91;1/92;1/93	108	x	-	x	x	-
-	91	-	V	2/90;4/92	-	33	-	-	x	x	-
-	92	-	V	1/90	4/91	37	x	-	-	x	-
-	93	-	V	1/90	6/88;2/85	33	x	6	x	x	-
2189	94	-	V	-	-	55	-	-	-	x	-
-	95	-	V	-	2/81;15/surf.	64	-	-	-	x	-
-	96	-	V	-	all/97	14	-	-	-	-	-
-	97	-	V	all/96	-	14	-	-	-	-	-

AS



Corpus no.	Pot. no.	Old no.	Plan/grid	Sherds to	Sherds from	Fabric no.	Stamp	Stamp group	Grave goods	Human bones	Animal bones
-	98-100	-	N.P.	-	-	-	-	-	-	-	-
2190	101	-	VI	(1/362)	1/surf;1/279	82	-	-	x	x	-
2124	102	-	VI	-	2/surf;2/VII	74	x	1	x	x	-
-	103-120	-	N.P.	-	-	-	-	-	-	-	-
2213	121	-	VII	-	-	9	x	-	x	x	x
2205	122	-	VII	1/145	1/141	9	x	4	-	x	-
2142	123	-	VII	3/363	-	69	x	1	x	x	-
2151	124	-	VII	( 2/126;1/363;2/364; ) ( 1/365;(2/366) )	-	4	x	-	x	x	-
2191	125	-	VII	-	-	121	-	-	-	x	x
2134	126	125A	VII	-	12/35;2/124;1/137	69	x	1	-	x	-
-	127	-	VII	-	13/128	5	x	-	-	-	-
2192	128	-	VII	13/127	2/143	5	-	-	-	x	-
-	129	-	VII	1/129A;1/368	-	3	-	-	) a.d.)	a.d.)	a.d
2255	129A	-	VII	-	1/129	3	-	24	) a.d.)	a.d.)	a.d
2193	130	-	VII	1/365	-	2	-	-	x	x	x
2248	131	-	VII	-	-	83	x	-	-	x	-
2194	132	-	VII	1/365	-	44	-	-	-	x	-
-	133	-	VII	2/134	-	47	-	-	x	x	x
-	134(?FV)	-	VII	-	2/133	51	-	-	-	?	-
-	135	-	VII	-	-	11	-	-	-	-	-
2229	136	-	VII	-	5/137	118	x	9	-	x	x
2206	137	-	VII	( 1/126;5/136;1/139A; ) ( 1/370 )	-	84	x	-	x	x	-
-	138	-	VII	-	-	-	-	-	-	-	-
2230	138A	-	VII	-	1/144;1/IV	7	x	9	-	-	-
2195	139A	-	?VII	3/371	1/137;1/143	4	-	-	a.d.	-	-
2231	139B	139	?VII	-	1/C2'82	18	x	21	-	x	-
2157	140A	-	?VII	-	-	85	-	-	-	-	-
2238	140B	140	?VII	1/141	-	45	x	-	-	x	-
2145	141	-	?VII	1/122;1/376	1/140B	69	x	1	x	?	-

69

Corpus no.	Pot no.	Old no.	Plan/grid	Sherds to	Sherds from	Fabric no.	Stamp	Stamp group	Grave goods	Human bones	Animal bones
-	142	-	VIII	-	-	75	x	-	-	-	-
4046	143(FV)	-	VII	2/128;1/139A	1/136;1/81	45	x	-	-	-	-
-	143(lid)	-	VII	-	-	109	-	-	-	-	-
2143	144	-	VII	1/138A;1/376	-	69	x	1	-	x	-
2257	145	-	VIII	(2/372)	1/122	122	x	22	x	x	-
2122	146	-	VII	-	-	76	-	-	-	x	-
2196	146A	-	VIII	1/147D	-	39	-	-	-	-	-
2254	147A	-	?VIII	2/374;3/375;1/376	-	86	x	6	a.d.	-	-
2144	147B	-	VIII	-	-	110	x	1	-	?	-
2156	147C	-	?VIII	-	-	2	-	-	-	-	-
2121	147D	147	?VIII	2/153;1/287	1/146A	19	x	11	a.d.	a.d.	-
2120	148	-	VIII	-	-	1	-	-	-	-	-
-	149-50	-	N.P.	-	-	-	-	-	-	-	-
2251	151	-	VIII	3/377	1/154	34	x	25	x	x	-
-	152	-	VIII	-	-	54	-	-	-	x	-
-	152A	-	VIII	-	-	-	-	-	x	-	-
-	153	-	VIII	1/378	6/154;2/147D;1/surf.	33	-	-	-	x	-
2154	154	-	VIII	6/153	-	46	-	-	-	-	-
2214	155	-	VIII	( 2/157;11/379; ( 7/380) )	-	4	x	21	-	-	-
-	156	-	VIII	3/157	1/surf;7/157	20	-	-	-	x	x
2207	157	-	VIII	7/156	2/155;3/156	46	x	-	-	x	x
2236	158	-	VIII	-	-	3	x	23	-	x	-
-	159	-	VIII	-	-	-	-	-	-	-	-
2223	160	-	VIII	-	-	4	x	6	-	-	-
-	161	-	IX	16/302	-	3	-	-	-	x	-
2198	162	-	IX	-	1/surf.	33	-	-	-	-	-
2216	163	-	IX	-	1/IX	45	x	24	x	x	-
-	164	-	IX	-	-	64	-	-	x	-	-
2118	165	-	IX	-	-	87	-	-	x	x	-
2232	166	-	VIII	1/168A;1/177	-	117	x	17	x	x	-

A10

Corpus no.	Pot no.	Old no.	Plan/grid	Sherds to	Sherds from	Fabric no.	Stamp	Stamp group	Grave goods	Human bones	Animal bones
-	166A	-	IX	-	-	119	-	-	-	-	-
2180	167	-	VIII	-	-	77	-	-	a.d.	a.d.	a.d.
2178	168	-	VIII	-	-	21	-	- )	a.d.)	a.d.	-
2179	168A	-	IX	2/177	1/166	4	-	- )	a.d.)	a.d.	-
2177	168B	-	IX	-	-	62	-	-	a.d.	a.d.	-
2117	169	-	IX	-	-	65	-	-	-	-	-
4051	170	-	VIII/IX	26/177;1/384	3/IX;5/V;2/surf.	69	x	6	-	-	-
4076	170A	See 384									
-	171	-	IX	1/289	5/IX	58	-	-	x	-	-
-	172	-	IX	-	-	74	-	-	x	-	a.d.
2147	173	-	IX	1/174	-	70	x	1	x	-	-
-	174	-	IX	-	1/173	46	-	-	x	x	-
2109	175	-	IX	-	1/IV	88	-	-	x	?	-
-	176 u.crem	-	IX	-	-	-	-	-	-	-	-
-	177	-	IX	(30/388) (	2/168A;26/170;	) 73	x	1	-	-	-
				(	1/269;1/IX;1/166	)					
-	178-179	-	N.P.	-	-	-	-	-	-	-	-
2241	180	-	IX/X	-	-	89	x	-	x	-	-
2158	181	-	X	-	-	65	-	-	-	?	-
-	182	-	X	-	-	52	-	-	-	-	-
-	183	-	X	-	-	64	x	6	-	-	-
-	184	-	X	-	-	117	FN	-	-	-	-
2199	185	-	X	-	-	66	x	6	-	-	-
-	186	-	X	-	-	111	-	-	x	x	-
2116	187	-	X	-	-	13	-	-	-	x	-
-	188	-	X	-	-	-	-	-	-	-	-
-	189A	-	?X	-	-	22	-	-	- )	a.d.	-
-	189B	-	?X	-	-	38	-	-	- )	-	-
-	190	-	X	-	-	43	-	-	-	-	-
-	191-200	-	N.P.	-	-	-	-	-	-	-	-
-	201	-	XI	-	-	6	-	-	x	-	-

A =

Corpus no.	Pot no.	Old no.	Plan/grid	Sherds to	Sherds from	Fabric no.	Stamp	Stamp group	Grave goods	Human bones	Animal bones
-	202	-	XI	-	-	112	-	-	-	-	-
-	203 u.crem	-	XI	-	-	-	-	-	-	-	-
-	204	-	XI	-	-	Ae vessel	-	-	x	?	x
-	205-219	-	N.P.	-	-	-	-	-	-	-	-
2160	220	-	VI	-	-	23	-	-	-	x	-
2115	221	-	VI	1/222;1/270	2/ar. H3	48	-	-	x	-	-
2224	222	-	VI	-	1/221	6	x	10	-	-	-
-	223	-	VI	-	1/224	14	x	-	-	-	-
-	224	-	VI	1/223	1/225	55	x	6	x	-	-
2203	225	-	VI	1/224	1/81	54	x	10	-	-	-
2161	226	-	IV	-	-	48	-	-	-	x	x
2114	227	-	IV	-	1/88;1/surf;1/243	2	-	-	x	x	-
2162	228	-	IV	-	-	12	-	-	x	x	-
2131	229	-	III	-	-	4	x	1	-	x	-
2247	230	-	III	-	-	4	x	7	-	-	-
2163	231	-	III	-	-	90	-	-	-	-	-
2225	232	-	III	-	-	2	x	29	-	-	-
-	233	-	N.P.	-	-	-	-	-	-	-	-
2164	234	-	III	-	-	56	-	-	-	-	-
2132	235	-	III	-	-	68	x	1	-	x	-
-	236	-	II	-	-	-	-	-	-	-	-
-	237	-	III	-	-	24	-	-	-	x	x
2138	238	-	II	-	-	91	x	1	-	x	-
2166	239	-	II	-	-	4	-	-	-	x	-
2253	240	-	II	-	-	25	x	-	x	x	-
-	241	-	V	-	-	-	-	-	-	-	-
-	242	-	IV/V	-	-	-	-	-	-	-	-
2227	243	-	IV	1/227	-	113	x	-	-	-	-

A12

A13

Corpus no.	Pot no.	Old no.	Plan/grid	Sherds to	Sherds from	Fabric no.	Stamp	Stamp group	Grave goods	Human bones	Animal bones
2222	244	-	IV	-	-	55	x	-	x	-	-
-	245	-	V	-	-	-	-	-	-	-	-
-	246-60	-	N.P.	-	-	-	-	-	-	-	-
-	261	-	VIII	-	-	-	-	-	-	-	-
2208	262A	-	VIII	-	-	117	x	2	-	-	-
2128	262	See 265	-	-	-	-	-	-	-	-	-
2168	263A	-	?VIII	-	-	9	-	-	-	-	-
-	263B	-	?VIII	-	-	26	-	-	-	x	-
2129	264	-	VIII	5/389	-	71	x	1	x	-	-
2128	265	262	VIII	-	-	68	x	1	x	x	-
-	266-267	-	N.P.	-	-	-	-	-	-	-	-
-	268	-	VIII	-	-	118	x	1	-	-	-
-	269	-	VIII	1/177;2/296	-	4	x	-	-	x	-
2201	270	-	VIII	-	1/221	1	x	11	-	x	-
2169	271	-	VIII	1/276;1/390	-	69	-	-	-	-	-
2226	272	-	VIII	-	-	-	x	29	x	-	-
2170	273	-	VIII	-	-	56	x	27	-	x	-
4043	274(FV)	-	VIII	-	1/276	56	x	27	-	-	-
2171	275	-	VIII	(2/300);1/390	1/surf.	56	x	27	-	x	-
-	276	-	VIII	1/274	( 1/271;3/VII;1/IX; ) ( 1/surf. )	36	x	17	x	x	-
2172	277	-	VIII	-	-	40	-	-	-	x	-
2173	278	-	VIII	-	-	41	-	-	x	x	-
2112	279	-	VIII	1/101;(3/300)	-	92	-	-	-	x	-
4071	280	-	VIII	-	-	68	x	1	x	x	-
4015	281	-	VIII	-	-	10	x	2	-	x	-
2245	282	-	VIII	1/389	1/283	114	x	-	x	x	-
2233	283	-	VIII	1/282	-	93	x	17	-	x	-
2111	284	-	VIII	-	-	78	x	-	-	x	-
2175	285	-	VIII	-	-	27	-	-	-	x	-
2202	286	-	VIII	-	-	10	x	2	-	-	-

Corpus no.	Pot no.	Old no.	Plan/grid	Sherds to	Sherds from	Fabric no.	Stamp	Stamp group	Grave goods	Human bones	Animal bones
2135	287	-	VIII	-	1/147D	70	x	1	-	x	-
2125	288	-	VIII	-	-	70	x	1	-	-	-
END OF G.K.'S NUMBERS, except for re-numbered urns											
4072	289	-	N.P.	-	16/IX;1/171	115	x	1	-	-	-
4053	290	-	N.P.	-	1/VII;6/dec.surf.	67	x	16	-	-	-
-	291	-	N.P.	-	1/III;1/IX;1/surf.	67	x	16	-	-	-
4044	292	-	N.P.	-	5/surf.	28	x	7	-	-	-
4052	293	-	N.P.	-	( 3/VII;no.surf; )	3	x	18	-	-	-
					( 1/C2'82 )						
4048	294	-	N.P.	-	( 9/surf;1/fw'74; )	1	x	12	-	-	-
					( 1/C2'82 )						
4047	295	-	N.P.	-	8/ar.H3	4	x	-	-	-	-
4045	296	-	N.P.	-	( 1/surf;2/V;4/IX; )	13	x	-	-	-	-
					( 2/269 )						
4075	297	-	N.P.	-	3/ar.H3;1/surf.	70	x	1	-	-	-
-	298	-	N.P.	-	12/VII	71	x	1	-	-	-
-	299	-	N.P.	-	1/surf.dec.	10	x	2	-	-	-
-	301	-	N.P.	-	6/surf;1/C2'82	68	x	-	-	-	-
-	302	-	?IX	-	( 16/161;2/surf; )	6	x	24	-	-	-
					( 1/C2'82 )						
-	303	-	N.P.	-	1/surf.dec.	1	x	11	-	-	-
-	304	-	N.P.	-	7/surf.dec.	2	x	15	-	-	-
-	305	-	N.P.	-	2/IV;2/IX;1/C2'82	75	x	17	-	-	-
-	306	-	N.P.	-	10/surf.dec.	5	x	-	-	-	-
-	307	-	N.P.	-	9/surf.	6	-	-	-	-	-
-	308	-	N.P.	-	5/surf.	4	-	-	-	-	-
-	309	-	N.P.	-	6/surf.	104	x	2	-	-	-
-	310	-	N.P.	-	10/surf.	95	-	-	-	-	-
-	311	-	N.P.	-	1/VII;3/surf.	4	x	-	-	-	-
-	312	-	N.P.	-	6/surf.	65	-	-	-	-	-
-	313	-	N.P.	-	7/V	96	x	1	-	-	-

A14

81

Corpus no.	Pot no.	Old no.	Plan/grid	Sherds to	Sherds from	Fabric no.	Stamp	Stamp group	Grave goods	Human bones	Animal bones
-	314	-	N.P.	-	5/surf.	1	x	-	-	-	-
-	315	-	N.P.	-	16/surf.	35	FN	-	-	-	-
-	316	-	N.P.	-	4/surf; 1/f.w'88	4	x	6	-	-	-
-	317	-	N.P.	-	5/surf; 1/E4'82	10	x	26	-	-	-
-	318	-	N.P.	-	7/surf.	7	x	-	-	-	-
-	319	-	N.P.	-	3/surf.	3	x	8	-	-	-
-	320	-	N.P.	-	( 4/surf; 1/VII; ( 1/ar.H3 )	47	-	-	-	-	-
-	321	-	N.P.	-	3/surf.	72	-	-	-	-	-
-	323	-	N.P.	-	2/VII; 1/IX	55	x	-	-	-	-
-	324	-	N.P.	-	2/surf.	80	x	30	-	-	-
-	325	-	N.P.	-	( 2/IV; 3/VII; ( 2/surf.dec. )	54	x	-	-	-	-
-	326	-	?V	-	2/ar. H3	7	x	-	-	-	-
-	327	327ii	N.P.	-	6/surf; 1/V	69	x	1	-	-	-
-	328	-	?II	-	1/9B; 1/10	97	-	-	-	-	-
-	329	-	?II	-	1/14	-	-	-	-	-	-
-	333	-	?II	-	4/31	-	x	-	-	-	-
-	334	-	?II	-	1/32	-	x	-	-	-	-
-	336	-	N.P.	-	1/9B; 26/37	14	x	-	-	-	-
-	337	-	?II	-	5/37	99	-	-	-	-	-
-	338	-	?III	-	3/43; 3/surf; 16/III	1	x	-	-	-	-
-	339	-	?III	-	3/43; 2/surf.	79	x	-	-	-	-
-	345	-	?III	-	1/63A	5	-	-	-	-	-
-	346	-	?III	-	1/63; 1/surf.	1	-	-	-	-	-
2188	348	81a	N.P.	-	6/81; 45/84; 1/85	1	-	-	-	-	-
-	349	-	?V	-	2/81; 1/C2'82	59	x	3	-	-	-
4073	350	81c	?V	-	4/81; 17/85	69	x	1	-	-	-
-	352	-	?V	-	1/82A	30	x	-	-	-	-
-	363	-	?VII	-	3/123; 1/124	75	x	28	-	-	-
-	364	-	N.P.	-	2/124; 1/VII; 2/surf.	76	x	-	-	-	-

Corpus no.	Pot no.	Old no.	Plan/grid	Sherds to	Sherds from	Fabric no.	Stamp	Stamp group	Grave goods	Human bones	Animal bones
-	365	-	N.P.	-	2/124;1/130;1/132	101	x	1	-	-	-
-	368	-	N.P.	-	1/129B;1/III	3	x	-	-	-	-
-	371	-	N.P.	-	3/139A	5	x	9	-	-	-
-	374	-	N.P.	-	2/147A	61	x	14	-	-	-
-	375	-	N.P.	-	3/147A	66	x	1	-	-	-
-	376	-	N.P.	-	1/141;1/144;1/147A	71	x	1	-	-	-
-	377	-	?VIII	-	3/151	69	x	1	-	-	-
-	378	-	?VIII	-	1/153	3	x	30	-	-	-
-	379	-	?VIII	-	11/155	98	x	6	-	-	-
4076	384	170a in part	?IX	-	1/170;6/IX	68	x	1	-	-	-
-	389	-	?IX	-	5/264;1/282	33	x	6	-	-	-
-	390	-	?VIII	-	1/271;1/275	105	-	-	-	-	-
-	400	-	N.P.	-	4/IX;2/surf.	106	x	-	-	-	-
-	401	-	N.P.	-	2/III;1/surf.	10	x	-	-	-	-
-	402	-	?V	-	1/ar.H3	5	x	-	-	-	-
-	403	-	N.P.	-	2/ar.H3;2/Bag 300	5	x	-	-	-	-
-	404	-	?V	-	3/ar.H3	4	x	-	-	-	-
-	406	-	N.P.	-	3/surf;1fw'74	5	x	24	-	-	-
-	416	-	N.P.	-	( 1/fw'74;1/C2'81; ) ( 1/fw'88 )	3	x	23	-	-	-
-	417	-	N.P.	-	1/surf;1/fw'74	54	x	2	-	-	-
-	418	-	N.P.	-	-	69	-	-	-	-	-
-	419	-	N.P.	-	4/V;1/IX;9/surf.	13	-	-	-	-	-
-	421	-	N.P.	-	2/V;no./IX	31	-	-	-	-	-
-	422	-	N.P.	-	12/VII	103	-	-	-	-	-
-	424	-	N.P.	-	12/surf.	44	-	-	-	-	-
-	425	-	N.P.	-	5/surf.	42	-	-	-	-	-
-	427	-	N.P.	-	no./ENE	35	-	-	-	-	-
-	428	-	N.P.	-	no./ENE	1	-	-	-	-	-

B2



83

Corpus no.	Pot no.	Old no.	Plan/grid	Sherds to	Sherds from	Fabric no.	Stamp	Stamp group	Grave goods	Human bones	Animal bones
-	429	-	N.P.	-	no./ENE	34	-	-	-	-	-
-	430	-	N.P.	-	no./ENE	32	-	-	-	-	-
-	431	-	N.P.	-	no./ENE	34	-	-	-	-	-
-	432	-	N.P.	-	1/C2'82	9	x	4	-	-	-
-	433	-	N.P.	-	1/fw'88	-	x	4	-	-	-
-	434	-	N.P.	-	1/C2'82	-	x	12	-	-	-
-	435	-	N.P.	-	2/C3'82	-	x	13	-	-	-
-	436	-	N.P.	-	1/fw'88	-	x	15	-	-	-
-	437	-	N.P.	-	2/C3'82	-	x	20	-	-	-
-	438	-	N.P.	-	1/fw'74	-	x	23	-	-	-
-	439	-	N.P.	-	1/fw'88	-	x	23	-	-	-
-	440	-	N.P.	-	1/fw'74	-	x	24	-	-	-
-	441	-	N.P.	-	1/C3'82	-	x	33	-	-	-
-	442	-	N.P.	-	3/fw.'74	-	x	-	-	-	-
-	443	-	N.P.	-	1/fw.'74	-	x	-	-	-	-
-	444	-	N.P.	-	1/fw'74;1/fw'88	-	x	-	-	-	-
-	445	-	N.P.	-	1/surf.	-	x	-	-	-	-
-	446	-	N.P.	-	2/surf.	-	x	-	-	-	-
-	447	-	N.P.	-	1/fw'74	-	x	-	-	-	-
-	448	-	N.P.	-	1/fw'74;1/C3'82	-	x	-	-	-	-
-	449	-	N.P.	-	1/B3'82	-	x	-	-	-	-
-	450	-	N.P.	-	1/C2'82	-	x	-	-	-	-
-	451	-	N.P.	-	1/C3'82	-	x	-	-	-	-
-	452	-	N.P.	-	1/fw'88	-	x	-	-	-	-
-	453	-	N.P.	-	1/surf.	-	x	-	-	-	-
-	454	-	N.P.	-	1/surf.	-	x	-	-	-	-
-	455	-	N.P.	-	1/surf.	-	x	-	-	-	-
-	456	-	N.P.	-	1/fw'74	-	x	-	-	-	-
-	457	-	N.P.	-	1/C2'82	-	x	-	-	-	-
-	458	-	N.P.	-	1/C3'82	-	x	-	-	-	-
-	459	-	N.P.	-	1/C3'82	-	x	-	-	-	-
-	460	-	N.P.	-	2/C3'82	-	x	-	-	-	-

Corpus no.	Pot no.	Old no.	Plan/ grid	Sherds to	Sherds from	Fabric no.	Stamp	Stamp group	Grave goods	Human bones	Animal bones
-	461	-	N.P.	-	1/fw'74	-	x	-	-	-	-
-	462	-	N.P.	-	1/fw'88	-	x	-	-	-	-
-	463	-	N.P.	-	1/fw'88	-	x	-	-	-	-
-	464	-	N.P.	-	1/fw'88	-	x	-	-	-	-
-	465	-	N.P.	-	1/C2'82	-	x	-	-	-	-
-	466	-	N.P.	-	1/surf.	-	x	-	-	-	-

B4

**Appendix 1: Cremation Urn Bone Catalogue**

**Urn 1**

*Age 18-20: Female*

Many fragments from most parts of the body. These include: Clear cut cranial sutures showing no trace of union. Frontal process L. maxilla. Medial half of a lightly fired petrous temporal. Head of R. humerus, vertebrae, phalanges, and some long bones showing deficient firing. Other long bones well fired. This is possibly due to irregular stoking of a small pyre.

**Urn 3**

*Adult: Unsexed*

Twenty-eight fragments, all well fired. Not easily identifiable, but include: Fragments of cranial vault, humeral head and long bones. Thick inner table of parietal bone.

**Urn 4**

*Young Adult: Unsexed*

Some hundreds of fragments, mostly well fired except for small pieces of vertebral body. Included are: Cranial bones with sharp, unfused sutures. Part of a crown of a (? unerupted 3rd) molar tooth. A fragment of ununited epiphysis (? head of humerus). Much warping of long bones.

**Urn 5**

*Aged 26-35: Female*

Many fragments. Firing tends to be light. Included are: Three teeth.

1. ? a bicuspid with missing crown,
2. a 2nd upper molar,
3. a 3rd upper molar.

Other fragments: bicipital groove of humerus, brachialis insertion of ulna, a few pieces of cranial vault, various long bones. Nothing more than about 3.0cm long. Possible hair clinker.

**Urn 6**

*Adolescent: Unsexed*

Hundreds of small fragments. Firing poor. Included are: Especially poorly fired fragments of occiput, proximal part of femur and vertebral bodies. Cranial sutures sharp. Medial half of petrous temporal. Unfused humeral and femoral head epiphyses.

**Urn 7**

*Middle aged: Female*

Substantial, well fired fragments, which include: Small cranial fragments, some showing fused, other unfused, sutures. Mandibular fragment showing post-mortem loss of incisor teeth. Fragment of radius showing attachment of pronator teres. Ulna just distal to coronoid process. Neck and head of R. talus. Patella. Parts of femoral condyles. Fragment of navicular. Damaged vertebral body.

**Urn 8**

*Age 36-45: Male*

Hundreds of badly fired fragments including: Occiput less well fired than parietals. Some sutural fusion. Part of inner table of mandible: six dental intersepta showing post-mortem loss of teeth.

**Urn 9A**

*Adult (? 30+): Unsexed*

Fragment of medial half of petrous temporal. Some un-united cranial sutures. Parts of base of scapular spine. Fragments of femur showing linea aspera not occurring as a cleavage plane.

**Urn 9B**

*Age 26-35: Female*

Many dozens of well fired fragments including: Cranial vault and base, sutures un-united; part of right exterior orbital wall and anterior end of the temporal line; frontomalar suture. Inner table of genial region of mandible showing post-mortem loss of incisors. Head of humerus. Possible hair clinker.

**Urn 13**

*Age 10-11: Unsexed*

Many small fragments patchily fired. Including: Cranial fragments. ? fusing epiphysis of hallux. Patella. Distal articular surface of L. tibia; fragmentary, but shows a squatting facet.

**Urn 22**

*Adult: Unsexed*

Twenty-seven badly fired fragments. Mostly long bones.

**Urn 23**

*Young Adult: Unsexed*

Many fragments mostly well fired, but occiput and vertebrae less so. Both petrous temporals fractured through eminentia arcuata. Sutures un-united. Genial area of inner table of mandible showing post mortem loss of incisors. L. coronoid process. Base of scapular spine, badly fired. Fragments of rib, long bones, femoral head, acetabulum, etc.

**Urn 24**

*Adult: Male*

A few dozen well fired fragments. Most'y long bones. A substantial part of a humeral head.

**Urn 25**

*Age 6-8: Unsexed*

Many well fired fragments including: Thin cranial vault bones. Medial half of petrous temporal. Unfused epiphysis of ischial tuberosity. R. & L. femoral necks. The R. shows area of unfused epiphysis of the greater trochanter.

**Urn 26**

*Adolescent: Unsexed*

Scanty (about ninety) fragments. Well fired. Included are: Cranial sutures un-united. Vault thin. Part of neck of radius showing un-united epiphysis of head. Small vertebral fragments. Part of external condyle of R. femur.

**Urn 27**

*Infant (? 18 months): Unsexed*

Tiny fragments of skull and long bones. Crown of a (? 1st unerupted) upper molar. Head of humerus.

**Urn 28**

*Middle Aged: Male*

Hundreds of fragments, moderately well fired including: Parts of vault showing some endocranial union of sutures.

A.L. mandibular fossa with the root of the zygomatic arch and part of the temporal bone up to the sphenoidal border. Part of acetabulum; os calcis, 1st L. metatarsal, and poorly fired phalanges.

**Urn 33**

*Middle Aged: Male*

Hundreds of small well fired fragments including: Cranial vault with fusing (? lambdoid) sutures; medial half of petrous temporal (R.), base of zygomatic process of L. temporal; frontal process L. zygoma. Small piece of mandible showing post mortem loss of incisor teeth. Vertebral fragments; head of radius; many splinters of long bones; phalanges.

**Urn 34**

*Young adult: Unsexed*

A few dozen well fired fragments including: Parts of skull and long bones, etc. Unfused cranial sutures.

**Urn 37**

*Probable adolescent: Unsexed*

Eight fragments of long bones, well fired. Lightly built.

**Urn 39**

*A young child: Unsexed*

A few dozen fragments, well fired, including: Parts of skull, long bones and a fragment of the crown of a deciduous molar.

**Urn 41**

*Adult: Male*

Many well fired fragments including: Parts of cranial vault (occiput less well fired than parietals), frontal process L. zygoma. Head of metacarpal; terminal phalange of finger. Upper end of linea aspera with base of lesser trochanter.

**Urn 42**

*Middle Aged: Female*

Hundreds of well fired fragments including: Cranial vault showing fusion of sutures; frontal process L. zygoma; sharp orbital edge of zygoma. Condyle of mandible; part of posterior margin of R. mandibular ramus. Part of humeral trochlear surface; head of radius; head of metacarpal; part of talus; head of metatarsal. Many splinters of long bones.

**Urn 43**

*Adolescent: Possibly male*

Hundreds of fragments mostly well fired, but parts of spinous processes of vertebrae lightly calcined. Fragments include: Parts of cranial vault showing sharp sutural edges; medial part of petrous temporal; a bluntly rounded fragment of the orbital margin of zygoma. Part of ulna distal to coronoid process; base of scapular spine; part of scapoid; parts of several middle phalanges of hand.

**Urn 44**

*Young adult: Male*

Many hundreds of fragments including cranial vault with many unfused sutures. R. temporal line of frontal bone with lateral one third of orbital margin and part of the roof of the orbit. Frontal process L. zygoma. Mandibular condyle; four roots of teeth (crowns cracked off by firing). A fragment of atlas, also other vertebrae, and part of sacrum.

Many broken long bones, carpal (pisiform) and tarsal fragments. The occiput, spinous processes of vertebrae, spine and glenoid fossa of scapula and the sacral fragments were very badly fired.

**Urn 46**

*Young Adult: Unsexed*

Many dozens of fragments including: Cranial vault (all very small, but showing bad firing of occipital elements). Vertebrae and long bones. Part of femur with clear linea aspera; much distortion of tibial shaft.

**Urn 47**

*Young Adult: Female*

Many dozens of well fired fragments including: Small cranial chips; medial half of L. petrous temporal. Part of mandibular condyle. Odontoid process; fragments of ilium and many splinters of long bones. Possible hair clinker.

**Urn 48**

*Middle aged: Female*

A few dozen well fired fragments including: Cranial sutures, fusing. Small splinters of long bones.

**Urn 49**

*Adolescent: Unsexed*

Hundreds of small well fired fragments including: Cranial vault with open sutures. Sacral fragments (badly fired). Small humeral head; root of scapular spine; various un-united epiphyses.

**Urn 57 = possibly 52**

*Adolescent: Unsexed*

Many well fired fragments but occipital and vertebral fragments are only lightly burned. Included are: Fragments of cranium with clean, unfused sutures. Small os triangulare. Many splinters of long bones, mostly difficult to identify. Part of small humeral head.

**Urn 62**

*Adult: Male*

Fifteen well fired fragments. One of parietal. Head of humerus. The rest long bones.

**Urn 68**

*Adult: Unsexed*

A few well fired fragments of vertebrae and long bones.

**Urn 69**

*Full adult: Male*

Some thousands of moderately fired fragments including: Cranial vault showing some unfused and some fusing sutures. R. antero-inferior angle of frontal bone; body of sphenoid; part of L. maxilla with floor of nasal passage. L. coronoid process of mandible. Odontoid process, vertebral and sacral fragments (some of these badly fired). Many splinters of ribs and long bones. Parts of both acetabula; badly fired coracoid process and head of radius. Fragments of hand and foot bones.

**Urn 70**

*Adult: Unsexed*

Some hundreds of small well fired fragments including: Cranial vault (some of which - ? occiput - is badly fired).

Medial part of both petrous temporals (R. badly fired). Base of scapular spine; splinters of vertebrae and long bones.

**Urn 71**

*Young adult: Female*

Many hundreds, perhaps thousands, of small fragments, variably fired. These include: cranial vault with sharp unfused sutures. Small mandibular condyle. Body and dens of axis; vertebral fragments (some of these badly fired); distal end of humerus; many splinters of long bones.

**Urn 81**

*Child (? 8-12 years): Unsexed*

Several dozen well fired fragments of cranial and long bones. Mostly very small.

**Urn 85**

*Middle Aged: Unsexed*

Eight well fired fragments. Two of cranial vault (on which tentative age determination is made). Six of long bones.

**Urn 87A**

*Adolescent: Unsexed*

Many dozens of well fired fragments including: Cranial vault with unfused sutures; medial half of both petrous temporals. Small vertebral fragments. Part of humeral trochlear surface; many splinters of small long bones. Amongst the fragments from this urn was one tooth which had its crown embedded in some form of metallic slag. The tooth has not yet been identified with certainty owing to the matrix which surrounds it. It is not a molar, however. A small fragment of unidentified bone is also adherent to the slag. It is clearly desirable to analyse this material which might possibly be the remains of something which had been in the mouth when the body was cremated. Although I do not know of any record of Anglo-Saxon orthodontic devices the possibility should at least be considered however unlikely this may be. A fused earring or similar ornament might also be possible. This fragment had been handed to Mr. Biek of the Ministry of Works (Dept. of Ancient Monuments).

**Urn 94**

*Child (? 18 months): Unsexed*

Many dozens of tiny well fired fragments including: Part of two petrous temporals. Many fragments of cranial vault. Crowns of four 1st milk molars. Some parts of vertebrae; long bones.

**Urn 101**

*Child: Unsexed*

The crowns of three milk molars.

**Urn 102**

*1. Young adult: Unsexed*

*2. ?? possible child*

Many hundreds of fragments most of which are well fired; a few sacral and vertebral pieces badly fired. Among these fragments are parts of cranial vault showing sharp unfused sutures. An incisor root, a molar root; the body and dens of axis; many parts of vertebrae and splinters of long bones. Base of scapular spine; biceps tuberosity of radius; parts of humeral heads; femoral neck; fibular fragments of

parts of carpus and tarsus. There are two average sized mandibular condyles and what is almost certainly a damaged third mandibular condyle which might have been that of a child. A few other fragments (e.g. of vertebral arch and long bone) suggest the presence of a second body, possibly a child.

**Urn 121**

*Young adult: Male*

Many dozens of well fired fragments which include: Cranial fragments with clean unfused sutures; medial parts of two petrous temporals. Parts of vertebral bodies, well fired; ischial tuberosity. Fragments of humeral heads; many splinters of long bone. Medial or orifice of hypoglossal canal with superior edge rolled over. This fragment can warp to resemble the commonly occurring petrous temporal fragments and so deceive with a suggestion of plural cremation.

**Urn 122**

*Child (? one year): Unsexed*

A few well fired fragments of an infant including: Parts of crowns of four molars probably preserved because they were protected by being unerupted in the jaw.

**Urn 123**

*Young adult: Unsexed*

Some hundreds of fragments including: Cranial sutures showing non-fusion; parts of occiput. Mandibular condyle. Parts of vertebrae. Proximal end of femur (these being poorly fired). Many, mostly small, splinters of long bones.

**Urn 124**

*Adolescent: Unsexed*

Some hundreds of fragments all well fired except proximal end of femoral shaft. These include: Cranial fragments with sharp sutures; root of one incisor. Part of body of thoracic vertebrae, other vertebral splinters and many tiny slivers of long bones.

**Urn 125**

*Full adult: Male*

Many hundreds of well fired fragments including: Cranial vault with sharp un-united sutures; frontal process of L. zygoma with heavy, rounded orbital margin. R. hypoglossal canal; medial half of R. petrous temporal. Tooth roots. Body and dens of axis; many vertebral fragments, all well fired; part of acetabulum. Head of humerus and many other fragments of long bones showing strongly marked areas for muscle attachment.

**Urn 126**

*Middle Aged: Male*

Nearly three thousand fragments, moderately well fired. These include: Cranial vault with fusing sutures (occiput not well fired). Many small fragments from most parts of the body. A femoral head fragment is present. This has a diameter of 45.1mm. although not all of the periphery is present. Splinters of long bones show prominent markings for muscle attachments.

**Urn 128***Adult: Well sexed*

A few dozen poorly fired fragments including: Dens, parts of other vertebrae; long bones including fragments of femoral shaft, etc.

**Urn 129***Adult: Unsexed*

A few dozen variably fired fragments, mostly long bones. No cranial fragments.

**Urn 130***Young adult: Female*

Sixteen moderately fired fragments including: Fragment of cranial vault; most of axis (with possible metallic staining). Trochlea of humerus; splinters of long bones.

**Urn 131***Child: Unsexed*

Several dozen fragments, many showing under-firing. Included are: Small, thin pieces of cranial vault; part of petrous temporal. Slivers of long bones and fragments of un-united epiphyses.

**Urn 132***Young adult: Female*

Many hundreds of fragments, mostly well fired. These include: Parts of cranial vault with unfused sutures; the base of a fractured mastoid process with the digastric groove and part of the sigmoid sinus; a frontal fragment at the articulation with the zygoma including part of the supero-lateral wall of the R. orbit. Fragments of vertebrae. Many splinters of long bones; tibial condyles; humeral trochlea; first cuneiform; part of fibula; fragments from hands and feet.

**Urn 133***Young adult: Female*

Hundreds of small fragments, variably fired, including: Cranial vault with un-united sutures; mandibular condyle; root of molars. Parts of vertebrae, long bones, femoral condyle, and splinters of phalanges.

**Urn 136***Adolescent: Unsexed*

Many dozens of badly fired fragments including: Cranial vault with sharp, unfused sutures. Large numbers of very small splinters of vertebrae and long bones.

**Urn 137***Adolescent: Unsexed*

Several dozen fragments, mostly well fired, including: A few pieces of cranial vault together with splinters of long bones.

**Urn 139***Young adult: Unsexed*

Numerous small fragments, variably fired, including: Cranial vault with sharp unfused sutures, occiput (badly fired); part of R. petrous temporal. Mandibular condyle. Various chips of long bone.

**Urn 140***Middle Aged: Unsexed*

Several dozen fragments, moderately fired, including: Cranial vault showing evidence of sutural fusion; medial half of R. petrous temporal. Fragments of long bones including distal end of humerus with a large foramen in the olecranon fossa.

**Urn 144***Full adult: Unsexed*

Many dozens of fragments, variably fired. These include: Cranial vault with fusing sutures; fragments of vertebrae and long bones.

**Urn 146***Full adult: Unsexed*

Many dozens of fragments nearly all well fired and apparently collected or placed in the urn with more than customary care; the fragments are distinctly above the average in size. They include: Parts of cranial vault with some fusion of endocranial surface and blurring of the ectocranial surface of sutures. Medial half of petrous temporal; L. coronoid process of mandible (badly fired — perhaps the head lay somewhat on its left side, or if lying in a slight hollow, some earth or turf may have slipped down against the side of the face.) Base of scapular spine (well fired), head of humerus; part of trochlea. Fragments of sacrum and acetabulum; extensive slivers of femur; part of distal end of the femur; long fragments of much-warped tibia.

**Urn 147***Middle Aged: Unsexed*

Several dozen well fired fragments including: Cranial vault showing fusion of endocranial layer of sutures and non-fusion of ectocranial layer. Parts of vertebrae and long bones.

**Urn 151***Young adult: Unsexed*

Some hundreds of well fired fragments including: Cranial vault with sharp unfused sutures; medial half of petrous temporal; L. great wing of sphenoid; hypoglossal canal; two mandibular condyles. Some (poorly fired) vertebral fragments. Splinters of long bones; head of radius; patella; proximal surface of talus.

**Urn 152***Child (? 5-8 years): Unsexed*

A few dozen well fired fragments including: Thin cranial vault; medial half of petrous temporal. Some fragments of unfused epiphyses.

**Urn 153***Adult: Unsexed*

A single small fragment from the proximal end of the femoral shaft. Badly fired.

**Urn 156***Adult: Unsexed*

Some dozens of poorly fired fragments, almost all of long bones of the lower limbs.

**Urn 157***Adolescent: Unsexed*

Some dozens of well fired fragments including: A few pieces of cranial vault. Some fragments of long bones including un-united epiphyses.

**Urn 158***Adolescent: Unsexed*

Many dozens of small, well fired fragments including: Cranial vault with sharp unfused sutures. Many splinters of long bones; head of radius; humeral trochlea; phalanges, etc. Evidence of fusing epiphyses.

**Urn 161***Adult: Unsexed*

A few dozen well fired fragments, almost all of long bones.

**Urn 163***Adolescent: Unsexed*

Some hundreds of well fired fragments including: Cranial vault with sharp unfused sutures; frontal process R. zygoma, showing smoothly rounded orbital margin (? male or ? due to firing). Mandibular condyle. Vertebral fragments (well fired). Many splinters of long bones; humeral trochlear surface; femoral condyle.

**Urn 165***Adolescent: Unsexed*

Several dozen well fired fragments including: Cranial vault with sharp unfused sutures. Vertebral fragments; body and dens of axis. Base of scapular spine. Many splinters of long bones; carpal scaphoid and other fragments of hands and feet. The distal end of an ulna is iron stained on its medial surface as though it had perhaps been in contact with a metal bracelet.

**Urn 166***Young adult: Unsexed*

Hundreds of variably fired fragments including: Cranial vault with unfused sutures. Vertebral fragments and many splinters of long bones.

**Urn 167***Adult: Male*

Some thousands of fragments variably fired. Skull, vertebrae and long bones represented in abundance.

**Urn 168***Young adult: Female*

A few hundreds of well fired fragments including: Cranial vault with sharp unfused sutures; medial half L. petrous temporal. Part of lingual aspect of mandible showing post-mortem loss of four incisor teeth. Parts of long bones including head of humerus; proximal three centimetres of radius; splinters of shafts, heads of metacarpals.

**Urn 174***Undetermined age: Unsexed*

A few small fragments of long bones.

**Urn 186***Full adult: Female*

Several dozen well fired fragments including: Cranial vault with some sharp unfused sutures; also some early sutural fusion. Vertebral and sacral fragments. Part of iliac

crest showing fused epiphysis; part of small femoral head; proximal third of fifth metatarsal; phalanges.

**Urn 187***Adolescent: Unsexed*

A few dozen well fired fragments including: Thin cranial vault with unfused sutures; part of mastoid process with small air cells. Part of vertebra (poorly fired); splinters of long bones (upper end of femoral shaft poorly fired); trochlear surface of humerus.

**Urn 189***Adult: Unsexed*

Many dozens of fragments, mostly long bones, mostly well fired. Included are: A few cranial and vertebral pieces; frontal process of L. zygoma. The body of a cervical vertebra; many small splinters of long bones difficult or impossible to identify.

**Urn 220***Young adult: Female*

A few dozen well fired fragments mostly long bones. One fragment of un-united epiphysis proximal end of tibia; part of humeral trochlea surface.

**Urn 226***Child (? 9-11 years): Unsexed*

Many small fragments mostly well fired except for some poorly fired vertebral fragments. Included are: Very few pieces of cranial vault; part of mandibular alveolar margin showing post-mortem loss of teeth. Some vertebral fragments; many splinters of long bones.

**Urn 227***Full adult: Female*

Some hundreds of very small well fired fragments including: Cranial vault showing commencing fusion of some sutures. Parts of vertebrae. Many splinters of long bones; fragment of small trochlea surface of humerus.

**Urn 228***Full adult: Female*

Many hundreds of fragments showing rather poor firing. These include: Cranial vault showing early fusion of sutures especially on endocranial aspect. Vertebral fragments. Many splinters of long bones; fragment of humeral head; proximal end of femoral shaft (badly fired). Good firing of femoral condyle fragments. Long bones seem to have been small and lightly built.

**Urn 229***Child: Unsexed*

A few dozen well fired fragments including: Cranial vault, thin with sharp unfused sutures (some occipital pieces poorly fired); a chip of mandible showing post mortem loss of incisor teeth. A few vertebral pieces and some splinters of small lightly built long bones.

**Urn 235***Adolescent: Unsexed*

A few dozen well fired fragments including: A sharp unfused scrap of cranial suture. A damaged patella. Splinters of small long bones including part of an unidentifiable unfused epiphysis.

**Urn 237**

*Young child: Unsexed*

A few dozen well fired fragments including: Thin cranial vault with sharp sutures. Broken deciduous molar root. Splinters of very small long bones.

**Urn 238**

*Full adult: Unsexed*

Several dozen fragments mostly well fired including: Cranial vault showing early sutural fusion; medial half of R. petrous temporal; a fragment of maxilla showing post mortem loss of teeth. A few vertebral fragments and numerous small splinters of long bones, including trochlea of humerus and some poorly fired femoral shaft.

**Urn 239**

*Full adult: Female*

Some hundreds of well fired fragments including: Cranial vault with commencing sutural fusion. Vertebral fragments; many splinters of long bones; part of carpal lunate.

**Urn 240**

*Middle Aged: Male*

Many hundreds of fragments, mostly not well fired. Included are: Parts of cranial vault showing some unfused sutures but also considerable amounts of fusing or fused sutures. Frontal process L. zygoma. Parts of lingual table of mandible showing post-mortem loss of incisor teeth. Vertebral fragments (some badly fired). Many small fragments of substantial, heavily built long bones, including parts of humeral and femoral heads; femoral condyles; carpal and tarsal fragments.

**Urn 265**

*Child: Unsexed*

Eighty-three fragments of which sixty-two are well fired and twenty-one are very badly fired. Included are: Thin fragments of cranial vault with sharp, unfused sutures; some vertebral scraps and some splinters of long bones. There is some evidence here that these bones, which are children's, are from two children rather than one. The two markedly different degrees of firing both include cranial and long bones but there is at least a hint of parity in age between the two groups of fragments. This is too ill-defined, however, for more than a tentative suggestion to be made that we have here two separate children who were separately cremated in different pyres and suffered commingling of their ashes in a common urn.

**Urn 263B**

*Young adult: Unsexed*

Many dozens of well fired fragments including: Cranial vault with fresh un-united sutures; medial half of L. petrous temporal; frontal process of L. zygoma; part of hard palate showing post-mortem loss of teeth. Vertebral fragments and parts of long bones including: Head of radius; ulna just distal to coronoid process; chips of (badly fired) femoral shaft; metacarpals and phalanges.

**Urn 269**

*Adult: Unsexed*

Six well fired fragments, two of tibial shaft, four unidentified.

**Urn 270**

*Full adult: Unsexed*

Some hundreds of well fired fragments including: Cranial vault with un-united sutures and a few showing commencing union. Frontal process of R. zygoma; zygomatic process of R. temporal; mandibular condyle. Part of glenoid fossa of scapula; coracoid process; part of head of humerus. Many other splinters of long bones; carpal lunate; broken metacarpals, metatarsals and phalanges.

**Urn 273**

*Full adult: Male*

Several dozen fragments, well fired except for occipital region. Included are: Fragments of cranial vault with sharp sutures, except for some slight endocranial fusion. Parts of long bones including a substantial fragment of L. femoral neck.

**Urn 275**

*Child: Unsexed*

Four well fired fragments of cranial vault and two of long bone from a young child.

**Urn 276**

*Adult: Unsexed*

Many dozens of well fired fragments, mostly long bones.

**Urn 277**

*Young adult: Unsexed*

Many hundreds of well fired fragments including: Cranial vault with sharp unfused sutures; part of petrous temporal; frontal process of L. zygoma; part of mastoid process; two fragments of occiput showing infective osteitis of ectocranial surface. Many small parts of vertebrae. Many splinters of long bones including parts of femoral head; fibular head; metacarpals and metatarsals.

**Urn 278**

*Child: Unsexed*

Many dozens of poorly fired fragments including: Thin cranial vault with sharp unfused sutures; part of petrous temporals. Numerous vertebral and long bone splinters; head of humerus with un-united epiphysis.

**Urn 279**

*Young adult: Unsexed*

Some hundreds of poorly fired fragments including: Cranial vault with unfused sutures except for a little early endocranial blunting of the sutural pattern. Occipital fragments very badly fired. Numerous parts of vertebrae and long bones; biceps tuberosity of radius; fragments of shafts of ulna; neck of femur; fibula; heads of metatarsals.

**Urn 280**

*Age undetermined: Unsexed*

Five small well fired splinters of long bones; no evidence of age and sex.

**Urn 281**

*Middle Aged: Male*

A few dozen well fired fragments including: Cranial vault with fusing sutures. Bicipital groove of humerus; trochlea of humerus; other parts of long bones. Areas for muscle attachments powerfully developed.



**Urn 282**

*Adult: Unsexed*

Eight small well fired fragments of long bones.

**Urn 283**

*Adult: Unsexed*

A couple of dozen well fired fragments of vertebrae and long bones including femoral and tibial shafts.

**Urn 284**

*Middle Aged: Male*

Many hundreds of fragments, mostly well fired except for some vertebrae. Included are: Parts of cranial vault with fused sutures; medial half of petrous/temporal. Many splinters of long bones including parts of head of radius, shaft of ulna, femoral condyles, *etc.* Base of scapular spine.

**Urn 285**

*Adult: Unsexed*

Twelve well fired fragments of long bones.

## Appendix II: Detailed Pottery Fabric Descriptions

by Andrew D. Russel

### Fabrics 1-32: sandy clay matrix

#### Fabric 1

Dense quartz grains, with the majority 0.5mm in diameter but some larger than 1mm.

#### Fabric 2

Sparse quartz grains with the majority over 0.5mm but less than 1mm in diameter (see fabric 3)

#### Fabric 3

Sparse quartz, the majority 0.5mm diameter, all less than 1mm. Probably the same as fabric 2 but with extra igneous rock temper.

#### Fabric 4

Quartz grains occasionally over 1mm in diameter, but the majority 0.25mm or smaller.

#### Fabric 5

Sparse rounded quartz grains, maximum diameter 0.75mm, in a dense fine quartz matrix.

#### Fabric 6

Dense quartz grains 1mm maximum diameter, but the majority 0.25mm, in a sparse fine quartz matrix.

#### Fabric 7

Quartz grains of maximum diameter 1mm, in a dense coarse sandy matrix.

#### Fabric 8

Quartz grains maximum diameter 1mm, majority 0.01mm, in a dense fine sandy matrix.

Fabric 9

Quartz grains maximum diameter 1mm, majority less than 0.5mm, in a coarse sparse sandy matrix.

Fabric 10

Dense quartz grains, maximum diameter 0.5mm, in a fine dense sandy matrix.

Fabric 11

Dense rounded quartz grains, maximum diameter 0.75mm, in a dense fine sandy matrix.

Fabric 12

Sparse rounded quartz grains, maximum diameter 0.75mm, in a fine sparse sandy matrix.

Fabric 13

Sparse rounded quartz grains, maximum diameter 1mm, in a dense fine sandy matrix.

Fabric 14

Sub-angular quartz grains, maximum diameter 1mm, in a dense sandy matrix.

Fabric 15

Rounded quartz grains, maximum diameter 0.5mm, in a dense sandy matrix.

Fabric 16

Sparse quartz grains, maximum diameter 1mm, in a sparse sandy matrix.

Fabric 17

Sparse quartz grains, maximum diameter 1mm, majority 0.5mm, in a sparse sandy matrix.

Fabric 18

Sparse rounded quartz grains, maximum diameter 0.75mm, in a dense sandy matrix.

Fabric 19

Sub-angular quartz grains, maximum diameter 0.75mm, in a sparse sandy matrix.

Fabric 20

Dense sub-angular quartz grains, maximum diameter 0.5mm, in a dense sandy matrix.

Fabric 21

Sparse rounded quartz grains, maximum diameter 1mm, majority less than 0.5mm, in a sparse sandy matrix.

Fabric 22

Sparse sub-angular quartz grains, maximum diameter 0.5mm, in a dense sandy matrix.

Fabric 23

Dense sub-angular quartz grains, maximum diameter 1mm, in a sparse sandy matrix.

Fabric 24

Sparse rounded quartz grains, 0.5mm maximum diameter, in a sandy matrix.

Fabric 25

Dense quartz grains, maximum diameter 0.75mm, in a sandy matrix.

Fabric 26

Sparse rounded quartz grains, maximum diameter 0.75mm, in a dense sandy matrix.

Fabric 27

Dense rounded quartz grains, maximum diameter 0.75mm, in a sandy matrix.

Fabric 28

Dense sub-angular quartz grains, maximum diameter 1mm, in a dense coarse sandy matrix.

Fabric 29

Dense sub-angular quartz grains, maximum diameter 0.75mm, in a dense sandy matrix.

Fabric 30

Sparse rounded quartz grains, maximum diameter 0.5mm, in a dense sandy matrix.

Fabric 31

Dense sub-angular quartz grains, maximum diameter 0.5mm, in a sparse fine sandy matrix.

Fabric 32

Dense sub-angular quartz grains, maximum diameter 0.5mm, in a dense sandy matrix.

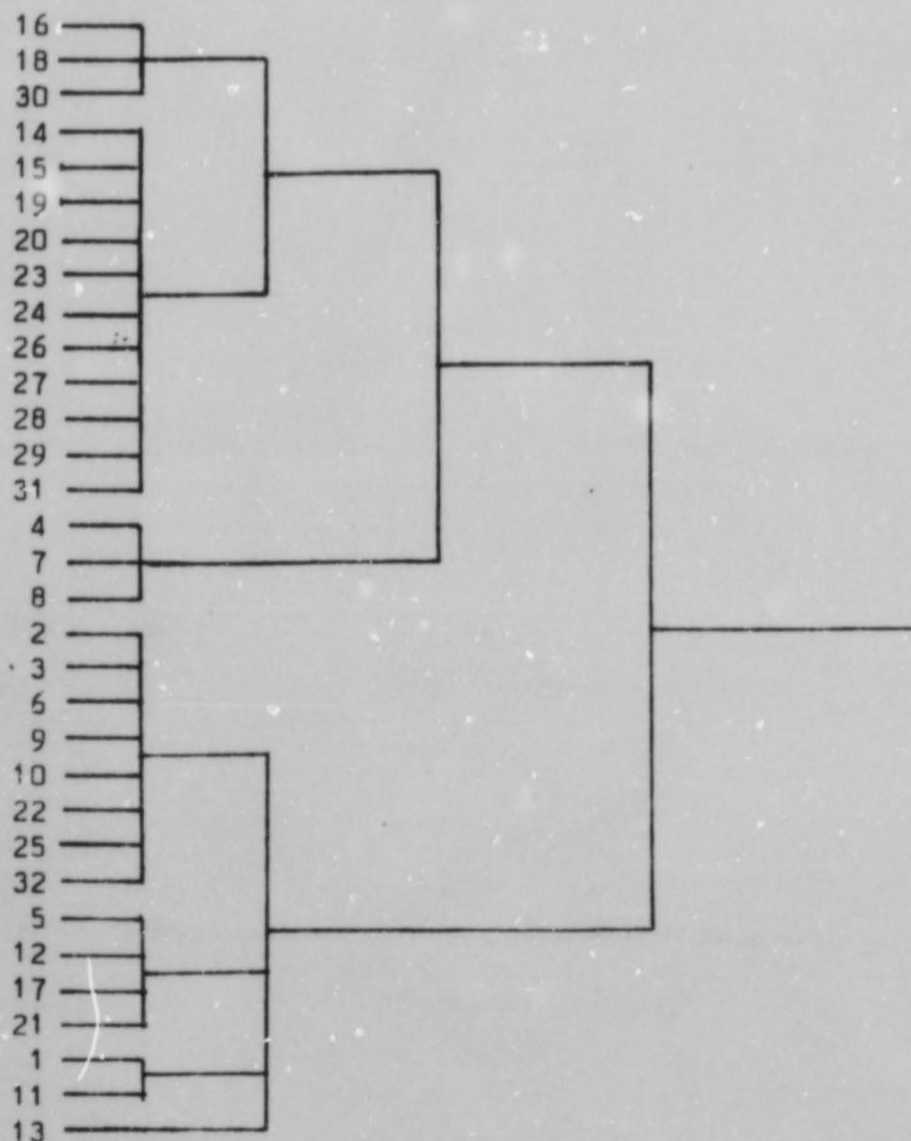


Figure 50 Dendrogram showing relationships between fabrics 1-32.

Fabrics 33-43: fabrics similar to fabrics 1-32 but coarser, containing larger quartz grains.

Fabric 33

Dense sub-angular quartz grains, maximum diameter 0.75mm, in a fine sparse sandy matrix.

Fabric 34

Sparse sub-angular quartz grains, maximum diameter 0.5mm, in a sparse sandy matrix.

Fabric 35

Dense sub-angular quartz grains, maximum diameter 1mm, in a dense sandy matrix.

Fabric 36

Dense rounded quartz grains, maximum diameter 1mm, in a sparse sandy matrix.

Fabric 37

Dense sub-angular quartz grains, maximum diameter 1mm, in a sparse sandy matrix.

Fabric 38

Dense rounded quartz grains, maximum diameter 1mm, in a sparse sandy matrix.

Fabric 39

Dense sub-angular quartz grains, maximum diameter 0.75mm, in a dense sandy matrix.

Fabric 40

Sparse rounded quartz grains, maximum diameter 1mm, in a sparse sandy matrix.

Fabric 41

Sparse rounded quartz grains, maximum diameter 0.5mm, in a sparse sandy matrix.

Fabric 42

Dense sub-angular quartz grains, maximum diameter 0.75mm, in a sparse sandy matrix.

Fabric 43

Sparse sub-angular quartz grains, maximum diameter 0.75mm, in a sparse sandy matrix.

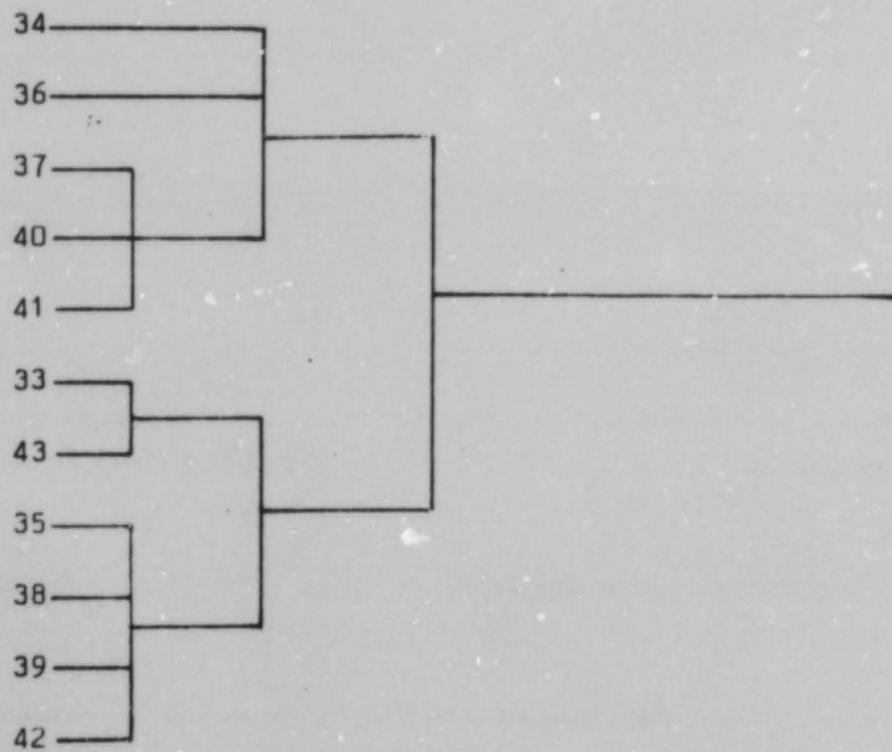


Figure 51 Dendrogram showing relationships between fabrics 33-43.

Fabrics 44-53: These fabrics all have well-sorted quartz components probably indicating a derivation from a disaggregated sandstone.

Fabrics 44 to 46 have a sandstone temper, in the case of 45 completely disaggregated to individual grains. Fabrics 47 to 53 have matrices with well-sorted quartz components, resulting in a markedly bimodal distribution. The relationships between the fabrics are shown in Table 10.

Fabric 44

Sub-angular quartz grains, maximum diameter 0.75mm, in a fine dense sandy matrix.

Fabric 45

Dense quartz grains, maximum diameter 0.75mm, mean 0.25mm, in a sparse sandy matrix.

Fabric 46

Sparse sub-angular quartz grains, maximum diameter 1mm, mean 0.25mm, in a sparse sandy matrix.

Fabric 47

Rounded quartz grains, maximum diameter 0.75mm, in a dense coarse well-sorted matrix.

Fabric 48

Sub-angular fragments of crushed granitic rock added to a dense coarse sandy matrix.

Fabric 49

Rounded quartz grains, added to a dense coarse sandy matrix.

Fabric 50

Rounded quartz grains, maximum 1mm, added to a dense fine sandy matrix.



Fabric 51

Occasional quartz grains, maximum diameter 0.5mm, with dense less well-sorted sandy matrix.

Fabric 52

Sparse rounded quartz grains, maximum diameter 0.5mm, in a dense coarse sandy matrix.

Fabric 53

Sparse quartz grains, maximum diameter 0.75mm, in a dense fine sandy matrix.

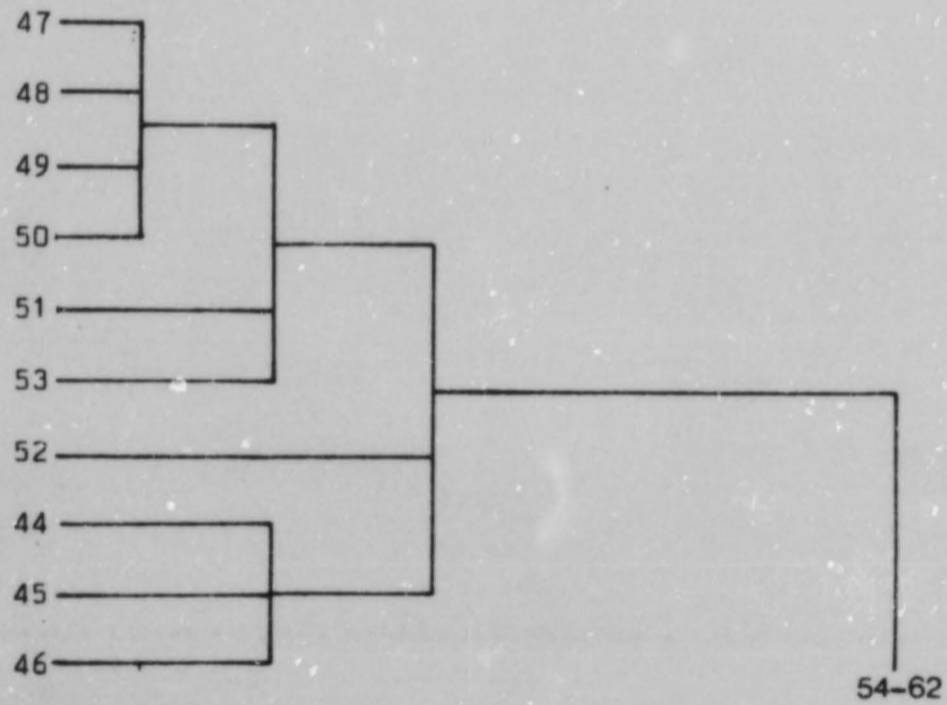


Figure 52 Dendrogram showing relationships between fabrics 44-53.

Fabrics 54-62: All these fabrics have a very fine well-sorted sandy matrix.

Fabric 54

Sparse quartz grains, maximum diameter 0.5mm, in an iron-rich sandy matrix.

Fabric 55

Sparse sub-angular quartz grains, maximum diameter 0.5mm, in a sparse sandy matrix.

Fabric 56

Sub-angular quartz grains, maximum diameter 0.5mm, in a dense sandy matrix.

Fabric 57

Igneous temper in a sparse fine sandy matrix.

Fabric 58

Igneous temper with sparse quartz grains, maximum diameter 0.5mm, in a sparse fine sandy matrix.

Fabric 59

Rounded quartz grains, maximum diameter 0.4mm, in a dense fine sandy matrix.

Fabric 60

Angular calcined flint temper with sparse quartz grains, maximum diameter 0.5mm, in a fine sandy matrix.

Fabric 61

Sparse rounded quartz grains, maximum diameter 0.8mm, in a fine sandy matrix. Iron is present as fragments of carstone-like material.

Fabric 62

Dense quartz grains, maximum diameter 1.25mm, mean diameter 0.5mm, in a dense coarse sandy matrix.

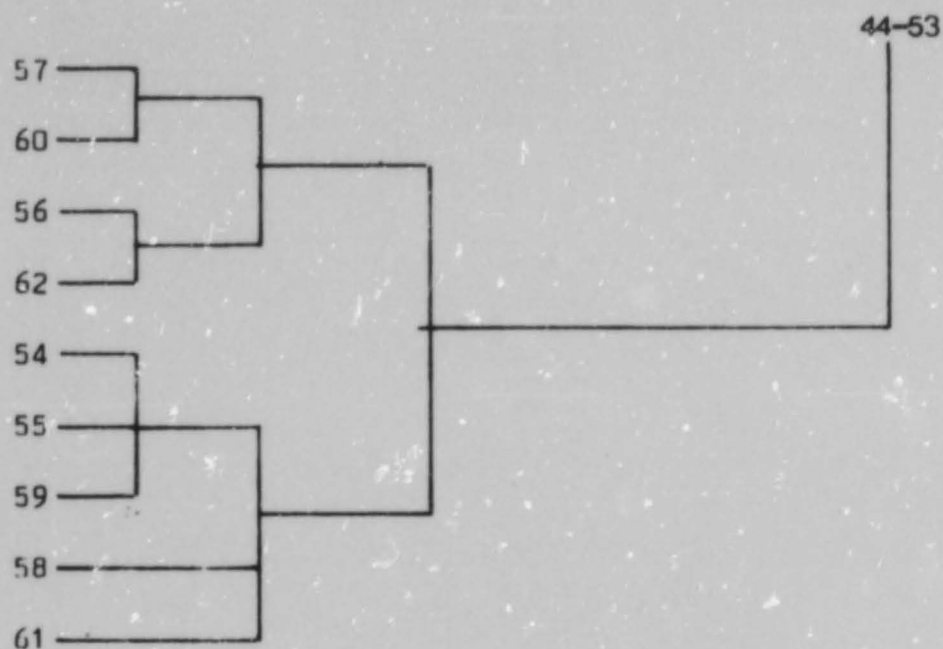


Figure 53 Dendrogram showing relationships between fabrics 54-62.

Fabrics 63-103: The relationship between these fabrics is more complex than the sandy groups, see Fig. 10.6 . All fabrics have a similar silty clay matrix.

Fabric 63

Quartz grains, maximum diameter 1mm, mean 0.25mm, in a fine silty matrix.

Fabric 64

Sub-angular quartz grains, maximum diameter 0.75mm, in a silty clay matrix.

Fabric 65

Sparse sub-angular quartz grains, maximum diameter 0.75mm, mean 0.2mm, in a silty clay matrix.

Fabric 66

Sub-angular quartz grains, maximum diameter 0.6mm, mean 0.2mm, in a silty clay matrix.

Fabric 67

Dense sub-angular quartz grains, maximum diameter 0.75mm, mean 0.3mm, in a silty clay matrix.

Fabric 68

Dense sub-angular to rounded quartz grains, maximum diameter 0.5mm, mean 0.25mm, in a silty clay matrix.

Fabric 69

Sparse sub-angular to rounded quartz grains, maximum diameter 0.5mm, majority 0.2mm in a silty clay matrix.

Fabric 70

Dense sub-angular to rounded fine quartz grains, maximum diameter 1mm, majority 0.2mm, in a silty clay matrix.

Fabric 71

Dense rounded to sub-angular quartz grains, maximum diameter 0.5mm, mean 0.2mm, in a silty clay matrix.

Fabric 72

Sub-angular quartz grains, maximum diameter 1mm, in a silty clay matrix.

Fabric 73

Sparse quartz grains, maximum diameter 0.75mm, in a streaky silty clay matrix.

Fabric 74

Dense quartz grains, maximum diameter 1.25mm, majority 0.4mm, in a silty clay matrix.

Fabric 75

Rounded to sub-angular quartz grains, maximum diameter 0.8mm, in a fine silty clay matrix.

Fabric 76

A silty clay matrix, tempered with crushed sandstone consisting of rounded to sub-angular quartz grains, maximum diameter 0.8mm.

Fabric 77

Sparse rounded quartz grains, maximum diameter 0.6mm, in a silty clay matrix.

Fabric 78

The C3 sherd carries a similar stamp to Y2 at Caistor-by-Norwich. Sparse rounded to sub-angular quartz grains maximum diameter 1.25mm, in a silty clay matrix.

Fabric 79

Dense sub-angular quartz grains, maximum diameter 1.25mm, in a silty clay matrix.

Fabric 80

Rounded to sub-angular quartz grains, maximum diameter 1.2mm, in a silty clay matrix.

Fabric 81

Sparse rounded to sub-angular quartz grains, maximum diameter 1.2mm, in a silty clay matrix.

Fabric 82

Dense rounded quartz grains, maximum diameter 0.8mm, in a silty clay matrix.

Fabric 83

Sparse sub-angular quartz grains, maximum diameter 0.6mm, in a silty clay matrix.

Fabric 84

Sparse rounded quartz grains, maximum diameter 1.5mm, in a silty clay matrix.

Fabric 85

Sparse sub-angular quartz grains, maximum diameter 1mm, in a silty clay matrix.

Fabric 86

Dense rounded quartz grains, maximum diameter 1.5mm, in a silty clay matrix.

Fabric 87

Sparse sub-angular quartz grains, maximum diameter 1mm, in a silty clay matrix.

Fabric 88

Sparse sub-angular quartz grains, maximum diameter 0.5mm, with much rounded flint, in a silty clay matrix.

Fabric 89

Dense sub-angular quartz grains, maximum diameter 1.75mm, majority 0.5mm, in a silty clay matrix.

Fabric 90

Dense rounded quartz grains, maximum diameter 1mm, in a silty clay matrix.

Fabric 91

Sparse sub-angular quartz grains, maximum diameter 0.5mm, in a silty clay matrix.

Fabric 92

Sparse sub-angular quartz grains, maximum diameter 0.5mm, in a silty clay matrix.

Fabric 93

Sparse rounded quartz grains, maximum diameter 0.75mm, in a silty clay matrix.

Fabric 94

Dense rounded quartz grains, maximum diameter 0.75mm, with much flint, in a silty clay matrix.

Fabric 95

Rounded quartz grains, maximum diameter 0.75mm, in a silty clay matrix.

Fabric 96

Sparse sub-angular quartz grains, maximum diameter 0.75mm, in a silty clay matrix.

Fabric 97

Sub-angular quartz grains, maximum diameter 0.75mm, in a silty clay matrix.

Fabric 98

Sub-angular quartz grains, maximum diameter 0.6mm, in a silty clay matrix.

Fabric 99

Sparse sub-angular grains, maximum diameter 0.75mm, in a silty clay matrix.

Fabric 100

Sparse sub-angular quartz grains, maximum diameter 0.6mm, in a silty clay matrix.

Fabric 101

Sparse sub-angular quartz grains, maximum diameter, 1mm, in a silty clay matrix.

Fabric 102

Dense rounded quartz grains, maximum diameter 1.25mm, in a silty clay matrix.

Fabric 103

Dense rounded quartz grains, maximum diameter 0.75mm, in a silty clay matrix.

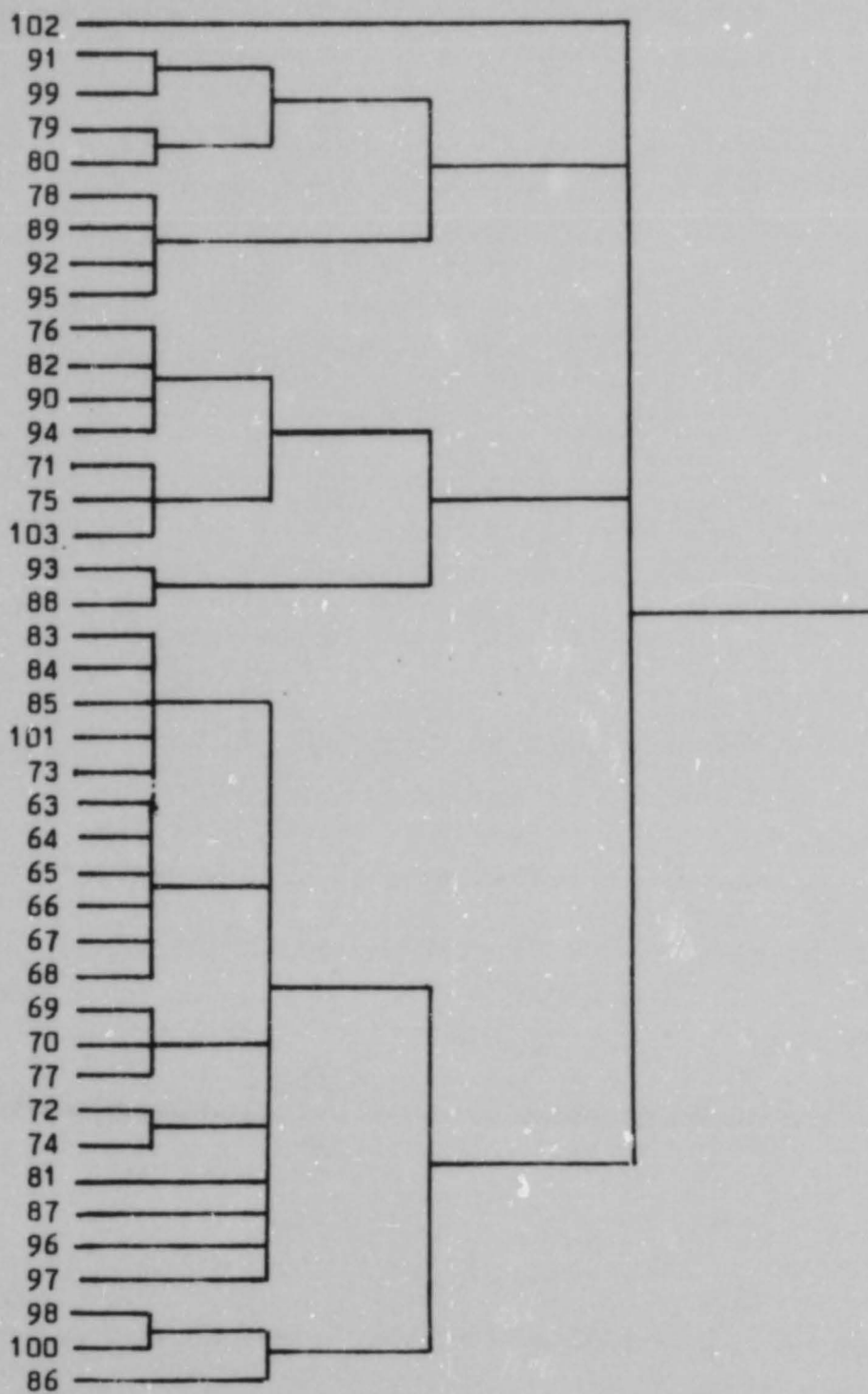


Figure 54 Dendrogram showing relationships between fabrics 63-103.



Fabrics 104-116: These fabrics all have the silty clays of fabrics 63 to 103 as a matrix, but also contain well-sorted fine quartz grains, probably derived from sandstones.

Fabric 104

Dense rounded quartz grains, maximum diameter 0.75mm, majority 0.4mm, in a silty clay matrix.

Fabric 105

Rounded quartz grains, maximum diameter 1mm, majority 0.3mm, in a silty clay matrix.

Fabric 106

Dense rounded quartz grains, maximum diameter 0.75mm, majority 0.3mm, in a silty clay matrix.

Fabric 107

Sparse, rounded quartz grains, maximum diameter 0.6mm, majority 0.3mm, in a silty clay matrix.

Fabric 108

Dense rounded quartz grains, maximum diameter 0.6mm, majority 0.2mm, in a silty clay matrix.

Fabric 109

Sparse rounded quartz grains, maximum diameter 0.7mm, majority 0.25mm, in a silty clay matrix.

Fabric 110

Sparse sub-angular quartz grains, maximum diameter 1.5mm, majority 0.3mm, in a silty clay matrix.

Fabric 111

Sparse sub-angular quartz grains, maximum diameter 1mm, majority 0.3mm, in a silty clay matrix.

Fabric 112

Sparse sub-angular quartz grains, maximum diameter 0.8mm, majority 0.2mm, in a silty clay matrix.

Fabric 113

Dense rounded quartz grains, maximum diameter 0.4mm, majority 0.2mm, in a silty clay matrix.

Fabric 114

Sparse sub-angular quartz grains, maximum diameter 0.8mm, majority 0.2mm, in a silty clay matrix.

Fabric 115

Dense sub-angular quartz grains, maximum diameter 0.25mm, majority 0.2mm, in a silty clay matrix.

Fabric 116

Sparse sub-angular quartz grains, maximum diameter 0.6mm, majority 0.2mm, with fragments of carstone, in a silty clay matrix.

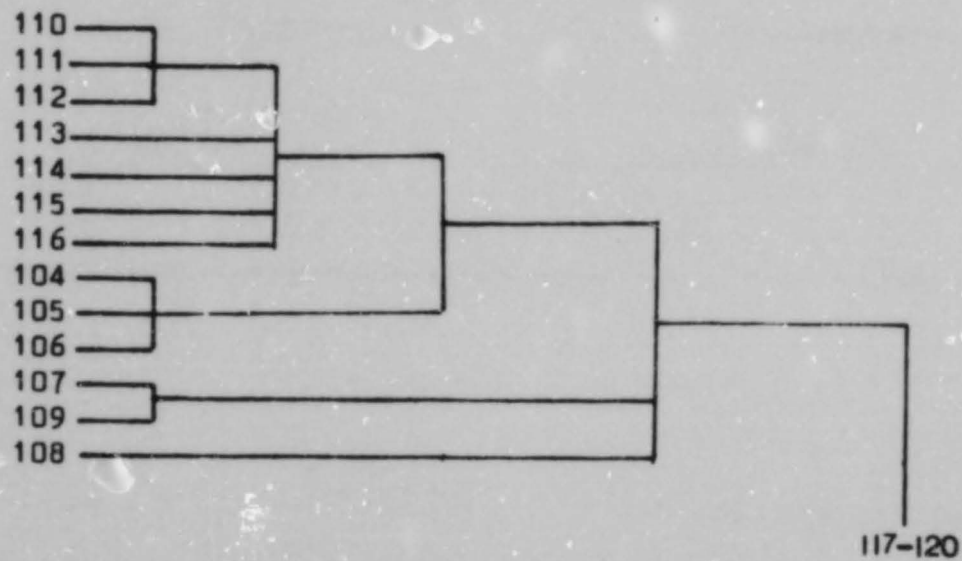


Figure 55 Dendrogram showing relationships between fabrics 104-116.

Fabrics 117-120: All as 63-103 but with well-sorted coarse sand.

Fabric 117

Rounded quartz grains, maximum diameter 0.8mm, majority 0.3mm, in a silty clay matrix.

Fabric 118

Sparse angular quartz grains, maximum diameter 0.8mm, majority 0.5mm, in a silty clay matrix.

Fabric 119

Sparse sub-angular quartz grains, maximum diameter 0.6mm, majority 0.1mm, in a silty clay matrix.

Fabric 120

Very sparse angular quartz grains, majority 1.2mm diameter, in a silty clay matrix.

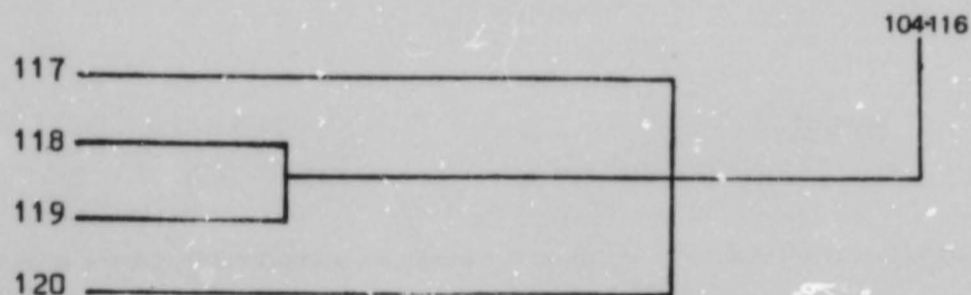


Figure 56 Dendrogram showing relationships between fabrics 117-120.

Fabrics 121-123: All these three fabrics consists of a silty clay matrix with fragments of limestone.

Fabric 121

Sparse quartz grains, maximum diameter 0.75mm, with sparse rounded fragments of limestone.

Fabric 122

Sparse quartz grains, maximum diameter 1mm, in a well-sorted fine silty matrix with abundant oolites.

Fabric 123

Sparse sub-angular quartz grains, maximum diameter 0.6mm, with abundant round voids 0.6mm to 0.8mm diameter.

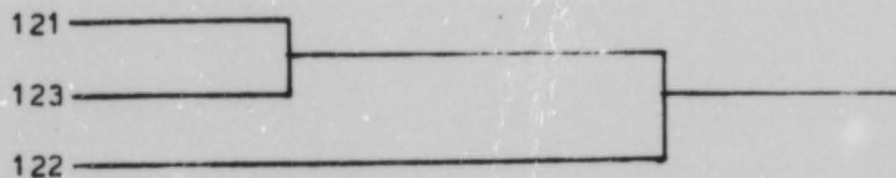


Figure 57 Dendrogram showing relationships between fabrics 121-123.

Fabrics 1-132

Fabric 1

URN NO	IG ROCK	GRG	VEGETABLE	SANDSTONE	FLINT	CHALK	IRON
148	X						X
270	X				X		X
294					X		X
303	X				X		X
314	X				X		X
338			X		X	X	X
346	X		X			X	X
348			X		X		X
* 414	X				X		X
428					X	X	X

---

Fabric 2

49							X
62	X						X
84	X						X
130	X						
* Ex141b		X			X		X
147C	X				X		X
227	X						X
232	X				X		
374	X						

---

\* not in published catalogue or Table 10

Table 15 Presence/Absence of inclusions in pottery fabrics.

Fabric 3

URN #	IG ROCK	GROC	VEGETABLES	SANDSTONE	FLINT	CHALK	IRON
41B	X						X
129	X						X
158	X				X		
161	X						X
271	X						
293	X				X		X
319	X						
61A	X				X		
129A	X						
368	X						
* 372	X						X
378	X						X
416	X				X		

---

Fabric 4

14	X						X
61		X	X				
124					X	X	
139A							X
155							X
160							X
168A	X	X					X
229							
230	X				X	X	
239							X
269	X					X	X
295			X			X	
378	X						X
311	X				X		X
316							
* 341	X	X					X
404	X						X
* 405					X		X
* 407					X	X	X

---

Table 15 (continued)

Fabric 5

URN NO	IG ROCK	GROG	VEGETABLE	SANDSTONE	FLINT	CHALK	IRON
82				X			X
89					X		X
127	X				X		X
128							X
* { 300i							X
300li			X	X			X
306	X						X
345				X			X
371							X
402	X				X		X
403			X	X	X		X
406	X			X			X

---

Fabric 6

201	X						X
222							X
302							X
377	X						X
302							X
* 408	X				X		X

---

Fabric 7

6							X
* f.work 1974					X		
* WITHB1			X		X		X
138A							
318							X
326	X						X

---

Table 15 (continued)

Fabric 8

URN NO	IG ROCK	GKUG	VEGETABLE	SANDSTONE	FLINT	CHALK	IRON
21	X			X			X
* 409	X		X				X
* 410	X		X	X			X
* 341	X						X
* 357							X

---

Fabric 9

27		X			X		X
47			X		X		X
121			X		X		X
122			X				X
432	X		X				X
263A					X		X

---

Fabric 10

281	X	X		X	X		X
286	X				X		X
299							X
317	X	X		X	X		X
401	X						X

---

Fabric 11

5			X				
* WITH89			X				
135			X				

---

Table 15 (continued)



Fabric 12

URN NO	IG DOCK	GRUG	VEGETABLE	SANDSTONE	FLINT	CHALK	IRON
228			X		X		X
* 353							X

---

Fabric 13

187	X				X		X
296					X		X
419					X		X

---

Fabric 14

70	X		X			X	X
71			X			X	X
96/97	X					X	X
223	X				X		X
336	X		X			X	X

---

Fabric 15

51			X				
----	--	--	---	--	--	--	--

---

Fabric 16

81	X						X
----	---	--	--	--	--	--	---

---

Table 15 (continued)

Fabric 17

UMN NO	IG ROCK	GRUG	VEGETABLE	SANDSTONE	FLINT	CHALK	IRON
85	X						X

---

Fabric 18

1398	X						X
------	---	--	--	--	--	--	---

---

Fabric 19

147D	X						X
------	---	--	--	--	--	--	---

---

Fabric 20

156	X			X	X		X
-----	---	--	--	---	---	--	---

---

Fabric 21

168							X
-----	--	--	--	--	--	--	---

---

Fabric 22

189A	X					X	X
------	---	--	--	--	--	---	---

---

Table 15 (continued)

Fabric 23

URN NO	IG ROCK	GRUG	VEGETABLE	SANDSTONE	FLINT	CHALK	IRON
220							X

---

Fabric 24

237							X
-----	--	--	--	--	--	--	---

---

Fabric 25

240	X						X
-----	---	--	--	--	--	--	---

---

Fabric 26

2638					X	X	X
------	--	--	--	--	---	---	---

---

Fabric 27

285					X		X
-----	--	--	--	--	---	--	---

---

Fabric 28

292	X				X		X
-----	---	--	--	--	---	--	---

---

Table 15 (continued)

Fabric 29

URN NO	IG ROCK	GROG	VEGETABLE	SANDSTONE	FLINT	CHALK	IRON
* 340	X			X			X

---

Fabric 30

352	X					X	X
-----	---	--	--	--	--	---	---

---

Fabric 31

421				X	X	X	X
-----	--	--	--	---	---	---	---

---

Fabric 32

430					X	X	X
-----	--	--	--	--	---	---	---

---

Table 15 (continued)

Fabrics 33 to 43

Fabric 33

URN NO	IG ROCK	GROG	VEGETABLE	SANDSTONE	FLINT	CHALK	IRON
8				X			X
36				X			X
91	X			X			X
93	X						X
153					X		X
162					X		X
389	X						X

---

Fabric 34

151	X				X	X	X
429				X	X		X
431					X	X	X

---

Fabric 35

315	X				X		X
315	X				X		X
427	X				X		X

---

Fabric 36

276		X			X		
276		X			X		
* 2811					X		X

---

Table 15 (continued)

Fabric 37

URN NO	IG ROCK	GROG	VEGETABLE	SANDSTONE	FLINT	CHALK	IRON
92	X						X

---

Fabric 38

189B	X						X
------	---	--	--	--	--	--	---

---

Fabric 39

146A					X		X
------	--	--	--	--	---	--	---

---

Fabric 40

277				X	X		X
-----	--	--	--	---	---	--	---

---

Fabric 41

278	X						X
-----	---	--	--	--	--	--	---

---

Fabric 42

425	X		X				
-----	---	--	---	--	--	--	--

---

Fabric 43

190	X						X
-----	---	--	--	--	--	--	---

---

Table 15 (continued)

Fabrics 44 to 53

Fabric 44

URN NO	IG ROCK	GROG	VEGETABLE	SANDSTONE	FLINT	CHALK	IRON
1				X			X
4				X			X
50							X
63				X			X
132				X			X
424			X	X			X

---

Fabric 45

140B							X
143				X			X
163							X

---

Fabric 46

154				X			X
137				X			X
174				X			X

---

Fabric 47

133			X				X
320			X				X

---

Table 15 (continued)

5

Fabric 48

URN NO	IG ROCK	GILG	VEGETABLE	SANDSTONE	FLINT	CHALK	IRON
221	X		X				X
226	X	X					X

---

Fabric 49

43							X
----	--	--	--	--	--	--	---

---

Fabric 50

61A/64							X
--------	--	--	--	--	--	--	---

---

Fabric 51

134							X
-----	--	--	--	--	--	--	---

---

Fabric 52

182			X				
-----	--	--	---	--	--	--	--

---

Table 15 (continued)



Fabric 53

URN NO	IG ROCK	GHDG	VEGETABLE	SANDSTONE	FLINT	CHALK	IRON
* 413	X						X

---

Fabrics 54 to 52

Fabric 54

15							X
152							X
225			X				X
325							X
* 415							X
417							X

---

Fabric 55

43	X						
94	X						
224	X		X				
244	X						X
323	X						
* 412							X

---

Table 15 (continued)

Fabric 56

URN NO	IG ROCK	GHOG	VEGETABLE	SANDSTONE	FLINT	CHALK	IRO N
234					X		X
273	X				X		X
274		X	X		X		X
275	X	X	X				X

---

Fabric 57

65 X

---

Fabric 58

171 X

---

Fabric 59

349 X

---

Fabric 60

\* 356 X

---

Table 15 (continued)

Fabric 61

URN NO	IG ROCK	GROG	VEGETABLE	SANDSTONE	FLINT	CHALK	IRON
374							X

---

Fabric 62

168B					X		X
------	--	--	--	--	---	--	---

---

Fabrics 63 to 103

Fabric 63

3	X		X		X		X
9B	X		X				X
24	X		X		X		X
40			X				X

---

Fabric 64

95	X		X				X
164	X		X				X
183		X					X

---

Table 15 (continued)

Fabric 65

URN NO	IG ROCK	GRIG	VEGETABLE	SANDSTONE	FLINT	CHALK	IRON
22	X						X
169	X						X
181	X		X				X
312					X		X
* 411	X				X		X

---

Fabric 66

48				X			X
185		X		X			X
* 358				X			X
375			X	X			X

---

Fabric 67

290	X						X
291	X				X		

---

Fabric 68

23					X		X
41B	X			X	X		
41A		X		X			X
* ex 141a				X			
235	X						
265	X						
280	X						X
301				X			X

---

Table 15 (continued)

Fabric 68 continued

URN NO	IG ROCK	GROG	VEGETABLE	SANDSTONE	FLINT	CHALK	IRON
* 3271				X			X
* 327111				X	X		X
373	X			X			X
384				X			X

---

Fabric 69

10	X						X
44	X						X
68	X						X
123	X						X
126	X						X
141	X			X			X
144	X			X			X
170	X	X	X				X
271	X						X
327	X						X
350	X				X		X
377	X						X
418	X						X

---

Fabric 70

28		X		X			X
34B		X					X
35		X					X
173		X		X			X
287		X					X
288		X					X
297		X		X			X

---

Table 15 (continued)

Fabric 71

URN NO	IG ROCK	GRUG	VEGETABLE	SANDSTONE	PLINT	CHALK	IRON
25				X			X
87A				X			X
264	X						X
298	X						
376	X			X			

---

Fabric 72

69	X			X			X
* 28111	X						X
321	X			X			X

---

Fabric 73

177		X			X	X	
-----	--	---	--	--	---	---	--

---

Fabric 74

46				X			X
102							X
172							X

---

Table 15 (continued)

Fabric 75

URN NO	IG ROCK	GRUG	VEGETABLE	SANDSTONE	FLINT	CHALK	IRON
305	X	X			X		X
142	X						X
363	X			X			X

---

Fabric 76

146	X			X			
364				X			

---

Fabric 77

167		X					
* 300	X	X					X

---

Fabric 78

284		†		X			X
* f.work 1982				X			X

---

Fabric 79

339				X			X
-----	--	--	--	---	--	--	---

---

Table 15 (continued)

Fabric 80

URN NO	IG ROCK	GROG	VEGETABLE	SANDSTONE	FLINT	CHALK	IRON
7							X
324	X						X

---

Fabric 81

9A	X						
----	---	--	--	--	--	--	--

---

Fabric 82

101	X				X		X
-----	---	--	--	--	---	--	---

---

Fabric 83

131	X		X				
-----	---	--	---	--	--	--	--

---

Fabric 84

137							X
-----	--	--	--	--	--	--	---

---

Fabric 85

140A	X						X
------	---	--	--	--	--	--	---

---

Table 15 (continued)



Fabric 86

URN NO	IG ROCK	GROG	VEGETABLE	SANDSTONE	FLINT	CHALK	IRON
147A	X						X

---

Fabric 87

165				X			X
-----	--	--	--	---	--	--	---

---

Fabric 88

175					X		X
-----	--	--	--	--	---	--	---

---

Fabric 89

180				X			
-----	--	--	--	---	--	--	--

---

Fabric 90

231

---

Fabric 91

238		X	X		X		
-----	--	---	---	--	---	--	--

---

Table 15 (continued)

Fabric 92

URN NO IG ROCK GROG VEGETABLE SANDSTONE FLINT CHALK IRON  
279

---

Fabric 93

283 X X

---

Fabric 94

\* 305X X

---

Fabric 95

310

---

Fabric 96

313 X X

---

Fabric 97

328 X

---

Fabric 98

379 X X X X

---

Fabric 99

337 X X

---

Table 15 (continued)

Fabric 100

URN NO	IG ROCK	GROG	VEGETABLE	SANDSTONE	FLINT	CHALK	IRON
* C3		X					

Fabric 101

365	X						
-----	---	--	--	--	--	--	--

Fabric 102

* 380					X		X
-------	--	--	--	--	---	--	---

Fabric 103

422	X	X	X				X
-----	---	---	---	--	--	--	---

Fabrics 104 to 116

Fabric 104

42				X	X		X
309							X

Fabric 105

* 388			X				X
390			X		X		X

Fabric 106

400	X						X
423	X						X

Fabric 107

32					X		X
----	--	--	--	--	---	--	---

Table 15 (continued)

Fabric 108

URN NO	IG ROCK	GRUG	VEGETABLE	SANDSTONE	FLINT	CHALK	IRON
90				X	X		X

Fabric 109

143 (11d)	X			X			
-----------	---	--	--	---	--	--	--

Fabric 110

147B				X			X
------	--	--	--	---	--	--	---

Fabric 111

186				X			
-----	--	--	--	---	--	--	--

Fabric 112

202				X			X
-----	--	--	--	---	--	--	---

Fabric 113

243			X	X			X
-----	--	--	---	---	--	--	---

Fabric 114

282	X						X
-----	---	--	--	--	--	--	---

Fabric 115

289				X			
-----	--	--	--	---	--	--	--

Table 15 (continued)

Fabric 116

URN NO	IG ROCK	GROG	VEGETABLE	SANDSTONE	FLINT	CHALK	IRON
* 330							X

---

Fabrics 117 to 120

Fabric 117

166	X	X			X		X
184	X						
305	X						X
262A	X						X

---

Fabric 118

26	X						X
136	X						X
268	X						X

---

Fabric 119

166A	X					X	
------	---	--	--	--	--	---	--

---

Fabric 120

13			X				X
34A			X				X

---

Fabrics 121 to 123

Fabric 121

125							X
-----	--	--	--	--	--	--	---

---

Fabric 122

145							X
-----	--	--	--	--	--	--	---

---

Fabric 123

33							X
----	--	--	--	--	--	--	---

---

Table 15 (continued)