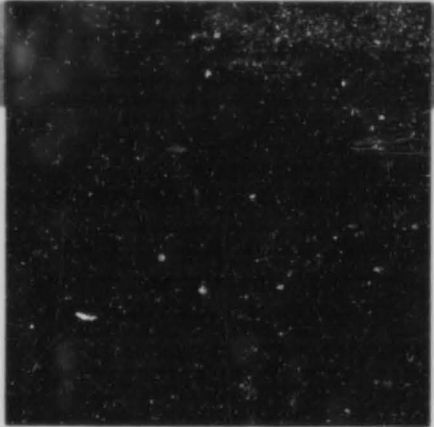
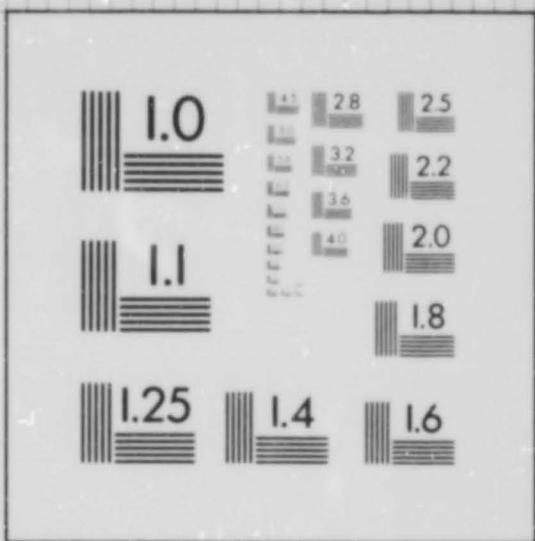


10 PT. ABCDEFGHIJKLMNOPQRSTUVWXYZ
 abcdefghijklmnopqrstuvwxyz
 1234567890

8 PT. ABCDEFGHIJKLMNOPQRSTUVWXYZ
 abcdefghijklmnopqrstuvwxyz1234567890

6 PT. ABCDEFGHIJKLMNOPQRSTUVWXYZ
 abcdefghijklmnopqrstuvwxyz1234567890

4 PT. ABCDEFGHIJKLMNOPQRSTUVWXYZ
 abcdefghijklmnopqrstuvwxyz1234567890



2.5 lp/mm

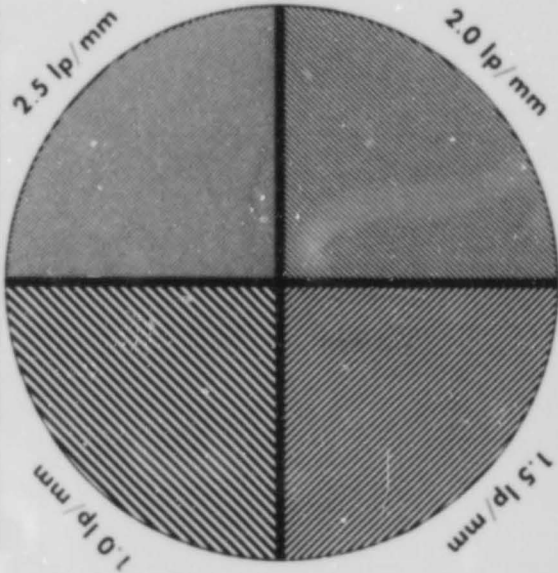
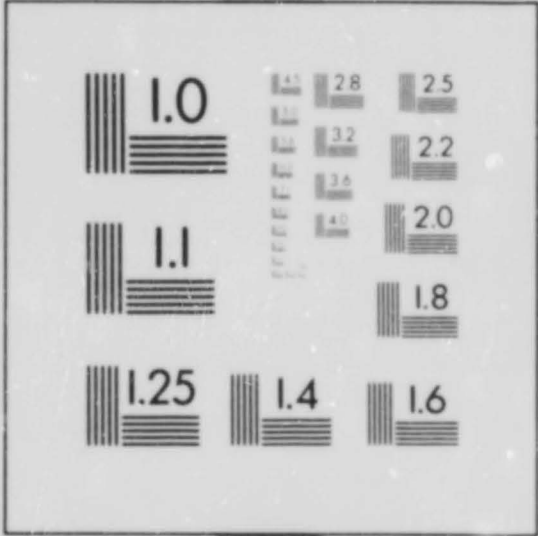
100mm

10 PT. ABCDEFGHIJKLMNOPQRSTUVWXYZ
 abcdefghijklmnopqrstuvwxyz
 1234567890

8 PT. ABCDEFGHIJKLMNOPQRSTUVWXYZ
 abcdefghijklmnopqrstuvwxyz1234567890

6 PT. ABCDEFGHIJKLMNOPQRSTUVWXYZ
 abcdefghijklmnopqrstuvwxyz1234567890

4 PT. ABCDEFGHIJKLMNOPQRSTUVWXYZ
 abcdefghijklmnopqrstuvwxyz1234567890



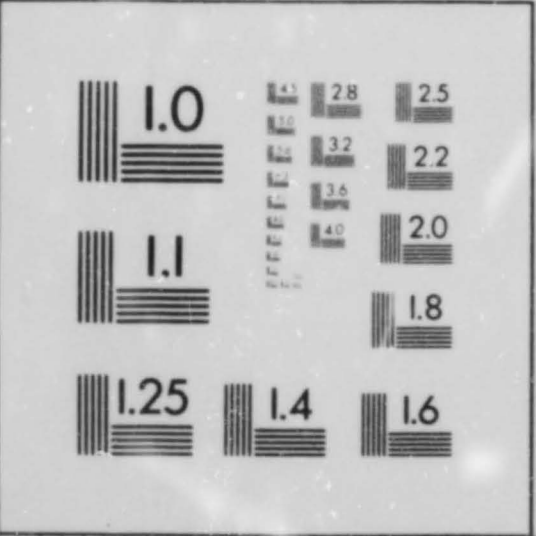
1.0 lp/mm



1.0 lp/mm



IMAGE SYSTEM
 TEST TARGET
 U.S. DEPARTMENT OF COMMERCE
 PATENT AND TRADEMARK OFFICE

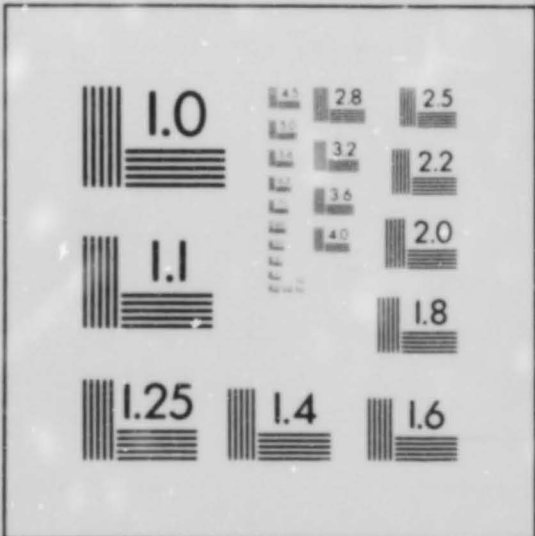


10 PT. ABCDEFGHIJKLMNOPQRSTUVWXYZ
 abcdefghijklmnopqrstuvwxyz
 1234567890

8 PT. ABCDEFGHIJKLMNOPQRSTUVWXYZ
 abcdefghijklmnopqrstuvwxyz1234567890

6 PT. ABCDEFGHIJKLMNOPQRSTUVWXYZ
 abcdefghijklmnopqrstuvwxyz1234567890

4 PT. ABCDEFGHIJKLMNOPQRSTUVWXYZ
 abcdefghijklmnopqrstuvwxyz1234567890



**Excavations at
Fishergate,
Norwich, 1985**

by Brian S. Ayers

with contributions from
E. Allison, P. Budd, C. Dallas,
A.K. Gregory, A.K.G. Jones, G. Jones,
H. Kenward, A. Locker, M. Manning,
D.M. Metcalf, P. Murphy, R. Scaife,
R. Stevenson, M. Tillyard, V. Williams

illustrations by
Jayne Bown, B. Funnell,
Hoste Spalding, Jean Stokes

photographs by
Brian S. Ayers

**East Anglian Archaeology
Report No.68, 1994**

**Field Archaeology Division
Norfolk Museums Service**

EAST ANGLIAN ARCHAEOLOGY
REPORT NO. 68

Published by
Field Archaeology Division,
Norfolk Museums Service,
Union House,
Gressenhall,
Dereham,
Norfolk NR20 4DR

in conjunction with
The Scole Archaeological Committee

Editor: Peter Wade-Martins
Managing Editor: Jenny Glazebrook

Scole Editorial Sub-committee:
David Buckley, County Archaeologist, Essex Planning Department
Keith Wade, County Archaeological Officer, Suffolk Planning Department
Peter Wade-Martins, County Field Archaeologist, Norfolk Museums Service
Stanley West

Set in Times Roman by Joan Daniells using © Ventura Publisher
Printed by

©FIELD ARCHAEOLOGY DIVISION, NORFOLK MUSEUMS SERVICE

ISBN 0 905594 13 4

For details of *East Anglian Archaeology*, see last page

This volume is published with the aid of a grant from the Historic Buildings
and Monuments Commission for England

Cover:

Fye Bridge, Norwich 1885 (detail) by Charles John Watson.
NCM R.J.Colman Bequest (1378.235.951).
(The excavation site is on the left hand side of the painting on the far,
downstream, side of the bridge).

Contents of Microfiche

Table 6	Percentage dry weight and percentage loss on ignition of deposits in column sample 12	A5	Table 23	Carbonised plant remains recovered by flotation/bulk sieving with 1 mm meshes from 78 (sample 14)	C5
Table 9	Anatomical analysis of larger groups of bone	A6	Table 24	Plant macrofossils from 121 (sample 6)	C6
Table 10	Age data: mandibles	A12	Table 25	Plant macrofossils from tenth-century contexts	C8
Table 11	Measurements of animal bone	A13	Table 26	Plant macrofossils from contexts 161, 162 and 163, fills within a wooden barrel (Period VI)	C12
Table 12	Sheep and goat	B4	Table 27	Plant macrofossils from column sample 12	D2
Table 15	Mollusca and marine crustacea from soil samples	B5	Table 29	Wood	E1
Table 16	Marine mollusc shells collected by hand	B6	Table 31	Ring width data and details of sample from post 49	E9
Table 19	Coprolites and faecal concretions: macroscopic features	B11	Table 32	Documentary evidence	F1
Table 20	Mosses	B13			
Table 21	Pollen counts	B14			
Table 22	Plant taxa from column sample 12 as grouped for ecological interpretation	C3			

Table 6. % dry weight and % loss on ignition of deposits in column sample 12

Context	Depth (cm)	% dry weight	% loss on ignition
78	65-75	66.6	6.8
78	75-85	63.7	8.2
78	85-93	60.2	8.9
95	93-104	51.2	20.3
96	104-113	60.7	12.9
97	113-123	43.2	27.9
97	123-133	22.3	69.3
104	133-143	28.6	49.0
104	143-153	39.7	32.0
104	153-163	35.3	42.1
104	163-173	36.9	37.3
104	173-183	28.2	57.0
104	183-195	25.6	64.8

104 = 175

Table 9. Anatomical analysis (microfiche)

	Cattle I		Cattle III1		Cattle III2		Cattle VI		Sheep/Gt III1 & 2		Pig III1 & 2			
	BN	zone	BN	zone	BN	zone	BN	zone	BN	zone	BN	zone		
		L		R		L		R		L		R		L
horncore	11	6 9	-	1 -	2	1	31	14 16	sh	6	2 6		hc	
									gt	2	- 2			
skull	81	27	27	12	52	27	12	20	10	11	25	21	sk	
maxilla	14	9 4	1	- -	4	2 1	1	- -	2	2 -	16	8 7	mx	
mandible	54	6 8	44	6 5	82	9 5	8	- -	28	9 7	45	8 19	md	
loose tooth	33	30	26	22	64	59	2	2	22	21	37	31	t	
Head	(193)	(86)	(98)	(45)	(204)	(104)	(54)	(32)	(70)	(54)	(123)	(96)		
vert.atlas		4		4		7		2		3		3	at	
axis		4		2		5		1		2		-	ax	
other cerv.		12		16		17		-		5		-	cv	
thoracic		29		22		43		-		8		4	th	
lumbar		18		15		19		2		3		2	lu	
sacrum		5		1		5		-		-		-	sa	
caudal		-		2		2		-		1		-	cd	
sub-total	79		62		99		5		23		9			
scapula	15	1 3	23	4 2	85	12 12	9	3 -	41	8 11	21	6 6	sc	
humerus	19	p 2 - s 5 4 d 5 4	21	p 1 - s 4 8 d 1 6	44	p - - s 9 9 d 7 5	14	p 1 - s 1 4 d 1 4	24	1 - 8 6 6 5	13	p - - s 5 5 d 3 1		hu
radius	22	p 6 6 s 3 4 d 3 5	34	p 7 7 s 6 5 d - 1	42	p 7 4 s 7 3 d 2 5	5	p - 1 s - - d - 2	34	7 4 11 9 5 2	27	p 10 6 s 11 6 d - 1		ra
ulna	13	5 2	9	1 2	24	11 5	1	- -	9	2 2	20	11 7	ul	

Ag

		Cattle I			Cattle III1			Cattle III2			Cattle VI			Sheep/Gt III1 & 2			Pig III1 & 2		
pelvis	25	il 9 1	14	il 3 -	39	il 2 7	4	il 1 -	20	6 4	17	il 3 6	pe						
		is 9 2		is 2 1		is 3 10		is 2 -		6 3		is 1 2							
		pu 3 2		pu 3 1		pu 4 4		pu 2 -		- 3		pu - 1							
femur	23	p 4 3	21	p 3 1	56	p 1 2	4	p - -	28	1 -	23	p 2 -	fe						
		s 6 4		s 4 4		s 9 11		s - -		6 3		s 1 3							
		d 3 -		d - 2		d 4 -		d - -		1 1		d - 1							
patella	1	1		-	3	3			-	-	fib.16	16	pa						
tibia	28	p 1 1	20	p 1 -	46	p 4 2	3	p - -	45	- 2	22	p 1 2	ti						
		s 3 3		s 3 9		s 7 5		s 1 -		12 9		s 7 3							
		d 4 4		d 3 10		d 7 6		d - -		8 6		d 9 3							
Body	(225)	(169)	(195)	(143)	(438)	(273)	(45)	(26)	(224)	(151)	(168)	(127)							
calcaneum		2 2		5 5		9 5		- 2		2 1		- 2	ca						
astragalus		3 5		- 3		2 1		- -		1 -		2 2	as						
carp./tars	17		15		26		3		6		6		c/t						
metacarpal	16	p 4 6	13	p 4 3	26	p 8 7	9	p 1 3	31	7 8	16	p 6 10	mc						
		s 5 5		s 5 2		s 6 5		s 1 1		5 9		d 5 8							
		d 4 2		d 1 1		d 4 -		d 2 2		1 1									
metatarsal	25	p 7 5	15	p 2 3	32	p 7 8	3	p 1 -	29	3 6	12	p 7 5	mt						
		s 8 7		s 3 3		s 5 8		s 1 -		5 9		d 7 3							
		d 3 6		d 1 3		d 1 2		d 2 -		2 3		d3 4 2 1							
metapodial	3	1	3	3	9	9	-	-	-	-	13	11	mp						
phalanx	18	1st 10	11	1st 6	39	1st 15	6	4	1	1	2	(1st 2	ph						
		2nd 6		2nd 1		2nd 8		-		-		(2nd -							
		3rd 2		3rd 4		3rd 14		1		-		(3rd -							
Foot	(79)	(62)	(57)	(47)	(132)	(103)	(21)	(18)	(67)	(38)	(49)	(47)							

A8

	Cattle I	Cattle IIII	Cattle IIII2	Cattle VI	Sheep/Gt IIII & 2	Pig IIII & 2
TOTAL	497 (317)	350 (235)	774 (480)	120 (76)	361 (243)	(340) (270)
Unidentified						
rib) cattle (114		145	280		sheep/pig 372	
vertebral frag.) size (32		17	62		size 18	
other fragment) (102		105	370		271	

Table 10. Age Data (mandibles)

	Cattle		Sheep, goat		Pig
	I	II/III2	III1/III2		II/III2
dp4 unworn	-	-	A	-	-
dp4 in wear,	-	1	B	1, 1sh	-
M1 unworn					
M1 in wear,	1	-	C	-	5 (1F)
M2 unworn.					
M2 in wear					
M3 unworn.	3	3	D	1, 2sh, 1gt	4 (2M)
M3 in wear,					
posterior cusp	2	5	E	-	7 (2F)
M3 in wear,					
pre stage g	2	-	F	3	2
M3 at stage g	-	1	G	1 ?gt.	-
M3 beyond g	3	8	HI	-	-

U - unworn; g - mature wear stage (Grant 1982); in wear - some dentine exposed (cattle, sheep and goat), wear visible on the enamel (pig); sheep mandible stages as Payne 1973.

For pig, sexed specimens are shown in parenthesis.

Table 11 (microfiche). Measurements

I late 9th-early 10th C; II 10th C; III1 10th/early 11th C; III2 11th C; IV late 11th/12th C; V 13th/14th C; VI Late Med.-14th C onwards (or 14th/15th?)

	Period	N	Range	Mean	SD
<u>Cattle</u>					
horncore Length outer curve (47)	I		138,143,145,149,151		
Basal circumference (44)	8		(120-179	137.4	
			(120-139, mean 131.4, (?all cows) plus 179 (male)		
max. basal diam (45)	9		41.5-49, mean 46.3 (?all cows) plus 62 (male)		
min. basal diam (46)	9		31-42, mean 35.7 (?all cows) plus 49 (male)		
47/44/45/46	IV		75/111/41/27; c.100/122/42.5/35 (?both cows)		
L outer curve	VI	22	101-180	130.9	22.88
basal circumference		33	124-186	148.1	14.54
max. b. diam.		35	40-67	51.5	5.88
min. b. diam.		31	36-48	41.3	3.46
humerus Breadth Trochlea/HTC	I		64.2/29.9; 68/31.5; 71/31.6; 77.4/33		
			HTC - Height of trochlea at central construction		
BT/HTC	III1		64.7/29.6; 65.0/29.4; 67.2/27.7; 71.0/35.3		
	III2		64.7/27.5; 73.7/31.7; 80/35.2		
	VI		64.5/30.2; 73/31.5		
radius Greatest Length/SD	I		258/37.0		
Breadth proximal		8	70.0-86	77.5	
	III1		66.9, 69.9, 72.6, 76.4, 84.3		
	III2	6	67-83.5	72.2	
tibia Breadth distal	I		54.7, 54.7, 55.9, 59.7, 63.2		
	III1	9	52.9-61.5	56.4	

	Period	N	Range	Mean	SD
	III2	9	51.9-60.5	55.4	
	IV		44.4, 51.0, 60.2		
astragalus GL lateral	I	6	56.1-66.1	60.8	
	III1		59.3, 59.6, 61.5, 63.2		
	III2		60.0, 60.5		
	IV		58.0, 59.5, 61.5		
metacarpal GL/Bp/SD/BFd/Dim	I		186/51.4/29.1/53.1/26.9		
	III2		182/57.1/32.8/60.1/29; 188/49.2/27.6/52.9/26.2		
	IV		168/51.0/29.2/52.4/26.1; - / - / - /57.7/27.6		
Ep	I	6	49.3-52.7	51.2	
	III1		48.3, 48.6, 57.4, 59.8		
BFd/Dim	VI		53.0/26.1; 55.8/28.0; 58.8/29.6		
metatarsal GL/Bp/SD/BFd/Dim	I		208/40.3/21.5/51.3/25.5; 216/ - /23.1/49/25.3; 223/47.5/25.4/54.8/ - ; (distal unfused: 244/47.4/25.9/55.4/28.9)		
	III1		213/43.2/ - / - /25.6		
BFd/Dim	IV		45.8/22.4; 56.0/27.5; 60.5/30.6		

BFd - breadth of the distal articulation

Dim - depth of internal trochlea, medial condyle.

Sheep and Goat

horncore	Goat	Loc/max/min.b.d.	I	235/54.4/34.3	III2 - /34.3, 24.0
				c. 220/54 /34	V 148/32.5/20.5
			III1	125/30.5/19.5	
Sheep			I	- /54 /38	III2 160/45.5/28.5
				183/55 / 39	IV 190/39.5/ -
				- /38.6/27.8	

		Period	N	Range	Mean	SD
				IIII	- /47.5/36.6	
					- /26.3/22	
scapula	SLC	II/IV	8	18.1-24.7	20.03	
	GLP	10th/11th C	6	28.6-38.2	32.43	
index	ASG/SLC		8	0.79-1.15	1.048	
large specimen	SLC/GLP/Index	IIII2		24.7/38.2/0.79	(i.e. short-necked)	
humerus	(BT	I		(25.7 27.0 27.3 28.8		
	(HTC			(13.5 13.4 14.0 15.4		
	BT	II/IV	10	24.9-31	27.28	1.72
	HTC		11	13.0-15.7	14.12	0.85
radius	BFp	II/IV	7	24.1-28.7	27.43	
	Bp		6	26.5-32.5	29.73	
	GL/BFp/Bp/SD/	IIII1		14.8 /27.5/30.6/ 16.0		
		IIII2		133.3/25.4/28.0 /14.3		
				151 /28.7/32.5/17.5		
				157.5/30.1/ - /17.1		
tibia	Breadth dist.	II/IV	13	24.3-29.2	25.92	1.33
	Depth d. (taken parallel with the astragalus groove)					
			12	19.4-22.1	20.22	0.76
metacarpal goat	GL/BFp/SD/BFd/Dem.Dim	II		117.5/235/15.2/26.3/11.6/13.2		
goat		IIII2		108.1/23.3/16.0/26.6/9.9/12.9		
metatarsal sheep		IIII2		125.5/ -/11.2/22.6/ - /13.2		
sheep	Bp/SD	VI		18.0/9.9		

ASG - length from glenoid to spine; Dem - depth of external trochlea, medial condyle.

Pig

skull lacrimal L(21)/B(22)	IIII1	28/23	
M Width Post.crown	IIII2	6	9.8-11.7
1			10.63

Bi

	Period	N	Range	Mean	SD
M WP (Payne forthc)		9	12.1-13.9	13.03	
2					
M (W Anterior			(14.2 13.9 13.4 14.2 14.4		
3			(29.3 29.4 30.2 32.1 32.4		
(Length					
scapula (SLC	I		(20.9 21.5 22.5 22.9 III2	(19.8 23.9	
(GLP			(32.0 - 34.1 -	(32.8 34.4	
SLC	IIII	6	20.1 - 24.0	22.17	
humerus (Bd	I		(38.6 39.6 40.3	III2 (36.0 36.3 37.8 40.5	
(HTC			(19.0 20.4 19.2	(17.8 17.5 18.9 19.9	
radius Bp(Payne)	I		25.9,27.5,28.0	IIII 27.3,28.3	
	IIII2	8	25.3-30.8	28.0	
ulna DPA	I		36.6,38.6 II 32.3 III1 33.2,38.5,40.0,40.0		
	IIII2		33.6,36.3,36.8 (olecr.unf.),38.3		
tibia (Bd(Payne)	I		(29.0 31.5 III2 (27.5 28 28.8 29 29.4		
(Dd			(26.3 28.9 (25.6 - 25.8 - 25.7		
astragalus	I		40.1 III2 34.8		
metapodials (GL	II		(mc I 55.5 IIII (mc III 71.1 mt III 75.5		
(Bd			(13.8 (16.5 13.7		

Horse

2nd phalanx L/BFp/SD/BFd 46.1/45/42.9/47.5

Dog

mandible cheek tooth row L 77

Roe Deer

radius GL/Bp/SD 155/24.6/13.7

		Period	N	Range	Mean	SD
<u>Fallow deer</u>						
metatarsal	GL/Bp/BFp			210/25.6/29.0		
<u>Fowl</u>						
corocoid	GL	III2/IV	7	48.6-57.5	52.34	
humerus	GL/Bp/SC/Bd	IIII		75.0/19.4/7.0/15.3	IV 61.1/17.0/5.9/13.2	
					61.3/16.9/6.3/13.1	
					63.1/16.7/5.8/13.6	
ulna	GL	IIII2		71.6,72.0,74.2,74.9	IV 73.3	
radius	GL	IIII2		64.9,65.6,68.2,70.7		
carpometacarpus	GL	IIII1		33.3 (bantam-size)	IIII2 35.9,37.3	
femur	GL	IIII2		78.8,79.9	IV 66.4,69.9,70.1, VI 76.2	
tibiotarsus	GL	I		111.0	IIII1 94.2,94.6,100.4	IIII2 94.7,115.4
		IV		92.8,94.5,96.1,113.0		
		IIII1/IV	9	92.8-115.4	99.52	8.61 CV 8.6%
tarsometars.	GL/Bp/SC/Bd/Spur	IIII1		62.2/13.0/5.3/12.1/no	IV 62.7/11.6/6.0/11.7/no	
		IIII2		65.7/11.7/5.6/11.6/no	" 78.8/14.3/7.3/14.3/yes L 20.0	
				70.6/12.0/5.8/12.4/no	" spur L including shaft 28.4	
<u>Goose</u>						
corocoid	GL	IIII1		64.5		
ulna	GL	IIII2		142		
carpometacarpus	GL	IV		80.8,81.4		
tarsometatars.	GL/Bp/SC/Bd	VI		80.6/17.4/7.3/18.0		
<u>Duck (domestic/mallard)</u>						
ulna	GL			78.9		

Measurements follow von der Driesch 1976 except where stated.

Table 12. Sheep and goat

	I		II		III1		III2		IV/VI		Total	
	Sh	Gt	Sh	Gt	Sh	Gt	Sh	Gt	Sh	Gt	Sh	Gt
Horncore*	5	2	-	-	5	1	3	1	-	1	13	5
Mandible	-	-	-	-	1	1	2	-	-	-	3	1
Metapodial	2	1	1	1	9	-	23	3	4	-	39	5
Total	7	3	1	1	15	2	28	4	4	1	55	11

For mandibles, see Payne 1985 and for metapodials see Lawrence 1980 and Boessneck et al 1964. *In addition one polled (hornless) sheep was present.

Table 15 (microfiche): Mollusca and marine crustacea from soil samples

The counts refer to gastropod apices and bivalve hinges. Other fragments are indicated by a +.

Notes: (a) Hinge fragments with only the cardinal teeth surviving or juvenile valves. These are probably mostly *M. balthica* but they are too incomplete or juvenile to be confidently identified. (b) Mostly very small fragments with chondrophore. (c) Badly abraded. (d) Mostly paired articulated valves. (e) Juvenile valve, 7 mm, collected by hand.

Sample No.	3	5	6	12	12	12	12	12	12	13	14	16	-
Context No.	90	99	121	52	54	78	95	96	97	123	78	162	102
<i>Mucula turgida</i> Leckenby and Marshall	-	-	15(d)	-	-	-	-	-	-	-	-	-	-
<i>Mytilus edulis</i> L.	+	-	+	+	1	1	1	+	1	+	24	+	1(e)
<i>Ostrea edulis</i> L.	+	-	+	+	-	3	+	+	+	1	17	-	-
<i>Cerastoderma</i> sp	-	-	-	-	-	+	-	-	-	-	+	-	-
<i>Tellina</i> (Fabulina) <i>fabula</i> Gmelin	-	-	1	-	-	-	-	-	-	-	-	-	-
<i>Tellina</i> sp	-	-	1	-	-	-	-	-	-	-	-	-	-
<i>Macoma balthica</i> (L)	-	1cf	378	-	-	-	-	-	-	-	-	-	-
Tellinidae indet. (a)	-	+	819	-	-	-	-	-	-	-	-	-	-
<i>Abra alba</i> (Wood)	-	-	3	-	-	-	-	-	-	-	-	-	-
<i>Abra</i> sp	-	-	3	-	-	-	-	-	-	-	-	-	-
Scrobiculariidae indet. (b)	-	-	23	-	-	-	-	-	-	-	-	-	-
Indet. marine bivalves (c)	-	-	-	-	-	-	-	-	-	-	2	-	-
<i>Buccinum undatum</i> L.	-	-	-	-	-	-	-	-	-	-	2	-	-
Indet. marine gastropod (c)	-	-	-	-	-	-	-	-	-	-	1	-	-
Barnacle plates	-	-	-	-	-	+	-	+	-	+	+	-	-
<i>Lysnaea truncatula</i> (Müller)	-	-	1	-	-	-	-	-	-	-	-	-	-
Succineidae indet.	-	-	-	-	-	-	-	-	-	-	1	-	-
<i>Cochlicopa</i> sp	-	-	-	-	-	-	-	-	-	-	1	-	-
<i>Acanthinula</i> sp	-	-	-	-	-	-	-	-	-	-	-	1	-
Limacidae indet.	1	-	-	-	-	-	-	1	-	-	-	-	-
<i>Helix aspersa</i> (Müller)	-	-	-	+	-	-	-	-	-	+	2	-	-

Table 16 (microfiche): Marine mollusc shells collected by hand.

Period I

Context no.	Ostrea		Mytilus	Cerastoderma	Buccinum	Neptunea	Other
	uv.	lv.					
88	1	-	-	-	-	-	-
104	1	4	1	-	1	-	-
106	3	1	-	-	-	-	-
129	2	-	3	-	-	-	-
Total MN1	10		2	-	1	-	-

Period II

Context no.	Ostrea		Mytilus	Cerastoderma	Buccinum	Neptunea	Other
	uv.	lv.					
89	2	1	-	-	1	-	-
90	3	2	-	-	-	-	-
113	10	6	-	-	-	-	-
123	9	12	14	-	-	-	-
125	1	-	-	-	-	-	-
131	1	-	-	-	-	-	-
Total MN1	29		7	-	1	-	-

Period III(1)

Context no.	Ostrea		Mytilus	Cerastoderma	Buccinum	Neptunea	Other
	uv.	lv.					
87	13	9	1	-	-	-	-
91	8	9	-	-	-	-	-
95	14	8	-	-	-	-	-
96	6	9	4	-	1	-	-
97	9	6	1	-	-	-	-
99	9	11	2	-	-	-	-
100	66	32	2	-	3	-	-
103	2	3	5	-	-	-	-
108	19	26	1	-	-	-	<u>Nucella lapillus</u> 1
110	-	2	-	-	-	-	-
111	72	59	2	-	-	-	-
114	7	7	3	-	-	-	-
119	1	3	-	-	-	-	-
120	3	5	-	-	-	-	-
121	1	2	-	-	-	-	<u>Macoma balthica</u> 3
167	4	7	-	-	-	-	-
Total MW1		258	11	-	4	-	-

Period III(2)

Context no.	Ostrea		Mytilus	Cerastoderma	Buccinum	Neptunes	Other
	uv.	lv.					
20	372	316	5	-	1	-	-
75	185	142	2	-	-	-	<u>Macoma balthica</u> 1
78	292	270	14	-	1	-	-
92	10	7	3	-	-	-	-
94	6	6	1	-	-	-	-
102	-	1	-	-	-	-	-
165	15	11	-	-	-	-	-
166	6	13	-	-	1	-	-
180	29	22	-	-	4	-	-
181	30	27	(1)	-	1	-	-
182	3	6	-	-	-	-	-
Total MW1		959	13	-	8	-	-

Period IV

Context no.	Ostrea		Mytilus	Cerastoderma	Buccinum	Neptunea	Other
	uv.	lv.					
37	117	114	(1)	-	1	-	-
48	3	1	-	-	-	-	-
51	3	-	-	-	-	-	-
52	4	2	1	-	-	-	<u>Macoma balthica</u> 1
53	1	-	-	-	-	-	-
54	2	-	-	-	-	-	-
55	119	76	(1)	-	(1)	-	-
57	1	1	-	-	-	-	-
63	4	6	-	-	-	-	-
65	2	1	-	-	-	-	-
67	1	1	-	-	-	-	-
69	1	1	-	-	-	-	-
71	-	1	-	-	-	-	-
73	4	4	-	-	-	-	-
77	1	1	-	-	-	-	-
80	4	3	-	-	-	-	-
84	1	-	-	-	-	-	-
85	3	2	-	-	-	-	-
Total MNI		274	2	-	2	-	-

Period v

Context no.	Ostrea		Mytilus	Cerastoderma	Buccinum	Neptunea	Other
	uv.	lv.					
2	237	185	1	1	5	-	(<u>Solenaceae</u> (+) (<u>Pecten maximus</u> (1)
26	1	-	-	-	-	-	-
35	78	75	4	-	12	-	-
40	23	14	3	-	-	-	-
Total MNI		339	4	1	17	-	-

Period VI

Context no.	Ostrea		Mytilus	Cerastoderma	Buccinum	Neptunea	Other
	uv.	lv.					
1	238	133	5	-	21	1	-
4	2	1	-	-	-	-	-
7	6	6	8	-	-	-	-
9	7	8	-	-	1	-	-
11	1	2	-	-	-	-	-
13	10	2	-	-	-	-	-
15	-	1	-	-	-	-	-
19	3	1	-	-	-	-	-
21	3	6	-	-	-	-	-
23	3	6	-	-	-	-	-
33	5	11	-	-	-	-	-
38	7	3	-	-	-	-	-
160	4	6	-	-	-	-	-
161	2	1	-	-	-	-	-
173	-	2	-	2	-	4	-
177	4	2	(1)	-	-	-	cf. <u>Ensis siligua</u> (1)
178	3	10	2	-	-	3	cf. <u>Ensis siligua</u> (1)
179	1	-	-	-	22	-	-
Total MW1	325		8	1	44	8	

Table 19 (microfiche): Coprolites and faecal concretions:
macroscopic features.

Context No.

- 33 (Period VI) Small fragment of large coprolite with rounded surface, c. 20 x 15 mm. Colour buff to off-white with porous structure. Abraded fragment of bone, 6 mm. No plant tissue fragments apparent.
- 94 (Period III(2)) Large fragments, up to c. 50 x 35 mm. Colour brown with porous structure. Abundant bone fragments, up to 25 mm, with sharp, almost unabraded surfaces. Contained charcoal fragments up to 3 mm, testa fragments of Agrostemma and Brassica, a Gramineae floret, and monocotyledonous stem/leaf tissue. Fragaria achene loosely attached to surface.
- 96 (Period III(1)) Large fragments up to c. 35 x 25 mm. Colour buff to brown with porous structure. Abundant angular, almost unabraded bone fragments up to 20 mm with some smaller abraded fragments. Charcoal fragments up to c. 3 mm. Monocotyledonous plant tissue.
- 121 (Period III(1)) Small fragments. Colour buff to off-white with porous structure. Includes bone fragments up to 11 mm, fairly sharp and unabraded.
- 123 (Period II) Small fragment c. 25 x 20 mm. Dark brown with open porous structure including glossy dense non-porous areas. Large fragments of monocotyledonous plant stem and leaf tissue with ?cereal inflorescence bracts. No bone visible.
- 162 (Period VI) Flat plate-like concretions up to about 20 mm thick. Structure open and porous with glossy dense non-porous areas. Chalk fragments up to 10 mm, small angular flint chips. Fly puparia abundant. Some beetles.

Small mammal bone. Small oyster-shell fragments.

Large fragments of Pteridium frond, Calluna stem and grass/cereal culm. Seeds of Malus, Galium aparine, Chenopodium album. Whole cereal caryopses. Scraps of Agrostemma testa and cereal periderm.

Table 20. Mosses (fiche)

	175	175	90	123	97	161	162	163
	143-153	153-163			113-123			
<i>Amblystegium riparium</i>	-	-	-	-	-	?	++	-
<i>Amblystegium serpens</i>	-	+	-	-	-	+	-	-
<i>Antitrichia curtispindula</i>	-	-	-	+	+	-	-	-
<i>Brachythecium rutabulum</i>	-	-	-	+	-	+	-	-
<i>Brachythecium velutinum</i>	-	-	-	-	-	+	-	+
<i>Calliergon cordifolium</i>	-	-	-	+	-	-	-	-
<i>Calliergon cuspidatum</i>	-	-	-	+++	-	-	+++	-
<i>Dicranum scoparium</i>	-	-	-	-	-	+	+	-
<i>Eurhynchium praelongum</i>	-	-	-	+	-	-	-	-
<i>Eurhynchium swartzii</i>	-	-	-	-	-	+	-	-
<i>Homalothecium sericeum</i>	-	-	-	+	+	+	-	-
<i>Hypnum cupressiforme</i>	-	-	-	+	-	+	-	-
<i>Isoetecium myurum</i>	-	-	-	-	?	-	-	-
<i>Mnium hornum</i>	-	-	-	+	-	-	-	-
<i>Neckera complanata</i>	-	-	-	+	-	-	-	-
<i>Plagiomnium undulatum</i>	-	-	-	+	-	-	-	-
<i>Plagiomnium rostratum</i>	-	-	-	+	-	-	-	-
<i>Pleurozium schreberi</i>	+	-	-	-	-	+	-	+
<i>Pseudoscleropodium purum</i>	-	-	+	+	-	-	-	-
<i>Rhizomnium punctatum</i>	-	-	-	+	-	-	-	-
<i>Rhytidiadelphus squarrosus</i>	-	-	-	+	-	-	+	-
<i>Thuidium tamariscinum</i>	-	-	+	-	+	-	-	-
<i>Ulota</i> sp	-	-	-	+	+	-	-	-

Table 21. Pollen counts (microfiche)

No. of taxa

85.0

No. of levels

16.0

00 Top profile 4 cm ints. Bottom profile 00

Betula, 3, 2, 1, 0, 3, 1, 7, 3, 0, 4, 3, 5, 7, 6, 5, 30
Pinus, 3, 4, 3, 0, 0, 1, 0, 6, 6, 6, 15, 11, 16, 107, 37, 23
Ulmus, 0, 0, 0, 0, 0, 0, 0, 0, 1, 1, 0, 2, 1, 0, 1, 2
Quercus, 8, 0, 0, 2, 10, 13, 14, 19, 10, 23, 17, 29, 18, 6, 6, 6
Tilia, 0, 0, 2, 0, 4, 1, 0, 0, 0, 0, 2, 3, 5, 0, 0, 0
Alnus, 2, 0, 1, 0, 0, 0, 8, 6, 12, 21, 14, 37, 33, 1, 1, 4
Fraxinus, 1, 0, 0, 0, 0, 1, 0, 0, 2, 1, 4, 1, 0, 3, 2, 3
Fagus, 0, 0, 0, 0, 0, 0, 0, 0, 0, 0, 1, 0, 0, 0, 0, 0
Taxus, 0, 0, 0, 0, 1, 0, 0, 0, 0, 1, 0, 0, 0, 0, 0, 0
Rubus type, 0, 0, 0, 0, 1, 0, 0, 0, 0, 0, 0, 0, 0, 0, 0, 0
Prunus type, 0, 0, 0, 0, 0, 1, 0, 0, 1, 0, 0, 0, 0, 0, 0, 0
Corylus type, 5, 5, 7, 2, 12, 12, 10, 12, 3, 13, 11, 30, 19, 5, 2, 14
Salix, 2, 0, 1, 0, 0, 0, 0, 0, 0, 0, 1, 1, 1, 1, 7, 9
Hedera, 0, 0, 0, 0, 0, 0, 0, 0, 0, 1, 0, 0, 0, 0, 0, 0
Humulus type, 0, 0, 0, 0, 0, 0, 0, 0, 0, 0, 0, 0, 1, 0, 0, 0
Calluna, 5, 3, 2, 0, 2, 1, 3, 1, 4, 3, 2, 2, 3, 0, 1, 1
Ranunculaceae undiff., 0, 0, 0, 0, 0, 1, 0, 0, 0, 0, 0, 0, 2, 0, 0, 0
Anemone type, 0, 0, 0, 0, 0, 1, 0, 0, 0, 0, 0, 0, 2, 0, 0, 0
Ranunculus type, 1, 1, 0, 0, 1, 1, 1, 1, 3, 9, 1, 10, 9, 2, 1, 5
Sinapis type, 9, 6, 11, 4, 8, 1, 1, 0, 1, 4, 0, 1, 0, 0, 1, 2
Hornungia type, 0, 0, 0, 1, 0, 0, 0, 0, 0, 2, 0, 1, 0, 0, 0, 0
Viola type, 0, 0, 0, 0, 0, 0, 0, 0, 0, 0, 0, 0, 0, 0, 0, 1
Dianthus type, 6, 13, 3, 2, 8, 4, 0, 2, 1, 0, 2, 0, 1, 0, 1, 0
Lychnis type, 0, 0, 0, 0, 1, 0, 0, 0, 0, 0, 1, 1, 0, 0, 0, 0
Stellaria type, 0, 0, 0, 0, 1, 0, 2, 0, 0, 0, 0, 0, 0, 0, 0, 0

Spergula type,1,2,0,0,1,0,0,0,0,0,0,0,0,0,0
Chenopodium type,1,0,1,2,4,4,1,0,1,1,0,0,0,0,1,0
Ononis type,0,0,0,0,1,1,0,0,0,0,0,0,0,0,0
Medicago type,0,0,0,0,0,0,0,0,0,0,0,0,0,0,3
Trifolium type,0,0,0,0,0,2,0,0,0,0,0,0,0,1,0,0
Lotus type,0,0,0,0,1,0,0,0,1,0,0,0,0,0,0,0
Vicia type,0,0,0,0,1,0,0,0,0,0,0,0,0,0,0,0
Lathyrus type,0,0,0,0,0,0,0,0,0,0,0,1,0,0,0,0
Rosaceae undiff.,1,0,0,0,1,0,0,0,1,1,0,2,1,0,2,0
Filipendula,0,0,0,0,0,2,0,3,6,2,1,2,0,9,5,4
Lythrum,1,0,0,0,0,1,0,0,0,0,1,0,0,0,0,0
Umbelliferae type,2,0,0,0,0,0,0,0,1,2,1,0,0,0,1,2,0
Umbelliferae type,3,0,0,0,0,0,0,0,0,0,1,1,4,3,0,0,4
cf. Euphorbia,0,0,0,0,1,0,0,0,0,0,0,0,0,0,0,0
Polygonum aviculare type,0,1,0,0,1,1,0,0,0,0,2,0,0,0,0,0
P.persicaria type,0,0,0,0,0,2,0,0,2,13,0,1,1,0,0,0
Rumex,2,2,2,0,1,3,2,0,3,0,11,3,5,0,1,2
Rumex obtusifolius type,0,0,0,0,1,0,0,1,0,0,3,0,1,0,1,0
Urtica type,0,1,0,0,0,1,0,1,0,6,1,0,1,0,0,0
Cannabis type,0,1,0,0,0,0,0,0,0,0,0,0,0,0,0,0
cf. Lysimachia,0,0,0,0,0,0,0,0,0,0,0,1,0,0,0,0
Calystegia type,0,0,0,0,0,0,0,0,0,1,0,0,0,0,0,0
Atropa,0,0,0,0,0,2,0,0,0,0,0,0,0,0,0,0
Solanum,0,0,0,0,0,0,0,0,0,0,0,0,0,0,1,0
Digitalis type,0,0,0,0,0,1,0,0,0,0,1,0,1,0,0,0
Melampyrum,0,0,0,0,0,0,0,0,0,0,1,0,0,0,0,0
Mentha type,3,1,0,0,0,0,0,0,0,0,1,0,0,1,2
Plantago lanceolata type,0,4,2,1,5,5,1,4,5,13,10,15,11,0,1,1
P. major type,2,1,0,1,1,0,0,0,0,0,1,0,0,1,1
Campanula type,0,0,0,0,0,0,0,0,0,0,1,0,0,1,0,0

Galium type,0,0,0,0,1,0,2,4,5,1,2,2,4,0,4,5
Valeriana,0,0,0,0,0,0,0,0,0,0,0,0,2,4,0
Succisa type,0,0,0,0,0,1,0,0,0,0,0,1,0,0,0,0
Bidens type,0,2,0,1,0,3,0,0,2,4,2,3,0,3,0,3
Aster type,0,2,0,0,0,0,0,0,0,1,0,0,2,0,0,0
Anthemis type,5,1,3,1,4,4,6,1,0,1,2,1,1,1,0,1
Cirsium type,1,0,1,0,0,0,0,0,0,0,0,0,0,0,0,0
Centaurea scabiosa type,0,1,4,1,0,1,0,0,0,0,0,0,0,0,0,0
C. cyanus,2,1,2,2,2,0,0,0,0,0,0,0,0,0,0,1
Taraxacum type,130,128,130,2,104,41,3,10,12,24,14,2,12,2,1,1
Liliaceae undiff.,1,0,0,0,0,0,0,0,0,0,0,0,0,0,0,0
Cyperaceae undiff.,11,10,3,1,10,12,5,124,117,71,81,45,51,38,125,67
Gramineae undiff.,145,124,134,800,117,165,182,94,172,154,162,152,163,52
Large Gramineae,52,70,87,100,80,108,155,0,6,8,7,9,12,1,8,24
Caltha type,0,0,0,0,0,0,0,0,1,1,0,1,0,0,1,2
Nymphaea,0,0,0,0,0,0,0,1,0,1,0,0,0,1,17,7
Nuphar type,0,0,0,0,0,0,0,0,3,0,0,1,0,3,1,0
Myriophyllum alterniflorum,0,0,0,0,0,0,0,0,1,0,0,1,3,0,1,6
Alisma type,0,0,0,0,0,0,0,0,0,0,0,1,0,0,1,1
Potamogeton,0,0,0,0,0,0,0,0,0,0,1,0,1,0,0,1
Iris,0,0,0,0,0,0,1,1,0,1,2,0,1,1,0,0
Sparganium type,1,1,0,0,0,0,0,6,9,6,9,8,9,1,6,10
Typha latifolia type,1,0,0,0,0,0,0,1,1,2,13,2,1,6,5,2
Unidentified,4,6,1,0,5,1,0,0,4,1,3,1,6,9,0,3
Equisetum,0,0,0,0,0,2,0,0,0,1,0,0,0,4,3,7
Pteridium,26,17,9,2,11,10,3,9,19,19,27,32,16,3,0,0
Dryopteris type,5,13,3,0,7,5,1,10,25,12,29,29,17,94,4,2
Polypodium,0,0,2,0,3,1,0,2,3,0,0,1,0,1,0,0
Sphagnum,0,0,1,0,1,0,0,0,1,0,1,0,0,3,0,0
Anthoceras,2,0,2,0,1,1,0,0,0,0,0,0,0,0,1,0

Table 22. Plant taxa from column sample 12 as grouped for ecological interpretation in Fig.27

Taxa listed in brackets are not included in Fig.27 since they are represented by leaf or stem fragments or since counts of seeds etc were not obtained. Iris and Corylus were identified from small fragments of fruits and nutshells. Carbonised macrofossils are indicated thus: (c).

1. Nymphaeaceae (Nymphaea alba, Nuphar lutea).
2. Scirpus cf lacustris.
3. Other Aquatics.
(Characeae), Ranunculus subg Batrachium, Oenanthe aquatica, Alisma plantago-aquatica, Potamogeton spp, Zannichellia palustris.
4. Lycopus europaeus.
5. Carex spp.
6. Other Wetland taxa.
Caltha palustris, Ranunculus flammula, Ranunculus sceleratus, Rorippa islandica, Lychnis flos-cuculi, Filipendula ulmaria, Lythrum salicaria-type, Epilobium sp, Hydrocotyle vulgaris, Apium spp, Cicuta virosa, Menyanthes trifoliata, Scrophularia sp, Bidens cernua, Bidens sp, (Juncus spp), (Iris pseudacorus), Typha sp, Eleocharis sp, (Phragmites australis).
7. Mentha spp.
3. Grassland taxa (including heath species).
(Pteridium aquilinum), Ranunculus acris/repens/bulbosus.
9. Urtica dioica.
10. Urtica urens.
11. Polygonum spp (P.aviculare, P.convolvulus, P.persicaria, P.lapathifolium).
12. Chenopodium album.
13. Stellaria media.
14. Lamium spp.
15. Other Weeds and other species of open habitats.

Papaver argemone, Papaver sp, Brassica sp, Raphanus raphanistrum,
Reseda luteola, Reseda sp, Agrostemma githago, Spergula arvensis,
Chenopodium rubrum/glaucum, Atriplex sp, Chenopodiaceae indet, Aphanes
arvensis/microcarpa, Conium maculatum, Euphorbia helioscopia, Rumex
acetosella, Rumex sp, Anagallis arvensis-type, Hyoscyamus niger,
Solanum nigrum, Galeopsis tetrahit/speciosa, Plantago major, Plantago
lanceolata (c), Valerianella dentata, Anthemis cotula,
Tripleurospermum maritimum, Centaurea cyanus, Lapsana communis,
Sonchus oleraceus, Sonchus asper, Bromus spp (c).

16. Woodland and scrub taxa.

(Ilex aquifolium), Rubus fruticosus, Rubus idaeus, Prunus sp, Alnus
glutinosa, (Corylus avellana), Solanum dulcamara, Sambucus nigra.

17. Halophytes and other coastal plants.

Beta vulgaris, Suaeda maritima, Glaux maritima, Triglochin maritima.

18. Cultivated plants.

cf Pisum-type (c), Vicia faba var minor (c), Avena spp (c), Hordeum sp
(c), Triticum sp (c), Secale cereale (c).

19. Incompletely identified specimens: several habitats possible.

Ranunculus sp, Cruciferae indet, Hypericum sp, Silene sp, Stellaria
palustris/graminea, Caryophyllaceae indet, Vicia/Lathyrus sp (c),
Potentilla sp, Umbelliferae indet, Myosotis sp, Solanum sp, Labiatae
indet, Compositae indet, Gramineae indet.

Table 23 (microfiche): Carbonised plant remains recovered by flotation/bulk sieving with 1 mm meshes from 78 (sample 14)

For identification of uncarbonised macrofossils in this layer see sample 12. Uncarbonised Beta vulgaris fruits were common in sample 14.

Abbreviations: c - culm; ca - caryopses; co - cotyledon; fr - fragment; fb - floret base; s - seed; sj - siliqua joint.

Notes: (a) mostly median grains; laterals very uncommon.

(b) Pulse cotyledons.

Cereal indet.	ca		87
<u>Triticum aestivum</u> s.l.	ca		6
<u>Secale cereale</u> L	ca		9
<u>Hordeum</u> spp	ca	(a)	110
<u>Avena</u> spp	ca		496
<u>Avena</u> spp	fb		10
<u>Avena sativa</u> L	fb		12
<u>Avena</u> cf <u>strigosa</u> -group	fb		10
<u>Raphanus raphanistrum</u> L	sj		4 + fr
cf <u>Spergula arvensis</u> L			1
<u>Agrostemma githago</u> L			2
<u>Vicia faba</u> L var <u>minor</u>			1
Leguminosae indet.		(b)	5 co + fr
<u>Vicia/Lathyrus</u> sp			5 s + 3 co
<u>Polygonum persicaria/lapathifolium</u>			10
<u>Polygonum convolvulus</u> L			2
<u>Rumex</u> sp			2
<u>Corylus avellana</u> L			fr
<u>Plantago lanceolata</u> L			2
<u>Galium aparine</u> L			1
<u>Bromus mollis/secalinus</u>			16
Gramineae indet.	ca		13
Gramineae/Cereal indet.	cfr		+
Indeterminate seeds etc			3
Sample volume (litres)			70 (approx)

Table 24 (microfiche): Plant macrofossils from 121 (sample 6).

<u>Ranunculus acris/repens/bulbosus</u>	7
<u>Brassica</u> sp	11
<u>Raphanus raphanistrum</u> L (siliqua joints)	3 + frags
<u>Rorippa islandica</u> (Oeder) Borbas	2
<u>Reseda luteola</u> L	1
<u>Agrostemma githago</u> L	cf 2
<u>Stellaria media</u> -type	15
<u>Stellaria</u> sp	1
<u>Spergula arvensis</u> L	14
<u>Chenopodium album</u> L	11
<u>Chenopodium rubrum/glaucum</u>	2
<u>Atriplex</u> sp	1
Chenopodiaceae indet.	2
<u>Potentilla</u> sp	4
<u>Rubus</u> sp	1 frag
<u>Hydrocotyle vulgaris</u> L	1
<u>Aethusa cynapium</u> L	1
<u>Polygonum</u> sp	11
<u>Rumex acetosella</u> agg	56
<u>Rumex</u> sp	1
Polygonaceae indet	4
<u>Urtica urens</u> L	5
<u>Urtica dioica</u> L	56
<u>Corylus avellana</u> L (nutshell frags)	+
<u>Solanum nigrum</u> L	2
<u>Mentha</u> sp	1
Labiatae indet.	1
<u>Plantago</u> sp	1
<u>Sambucus nigra</u> L	13 + frags
<u>Eupatorium cannabinum</u> L	1

<u>Anthemis cotula</u> L		15
<u>Lapsana communis</u> L		6
<u>Sonchus oleraceus</u> L		2
<u>Sonchus asper</u> (L) Hill		2
Compositae indet.		1
<u>Juncus</u> spp		+
<u>Typha</u> sp		1
<u>Carex</u> spp		8
<u>Eleocharis</u> sp		1
<u>Avena</u> sp	(carbonised grains)	1 + 1 cf
<u>Hordeum</u> sp	(carbonised grains)	1
<u>Linum usitatissimum</u> (L)	(capsule frags)	+
Indeterminate seeds etc		18
Sample wt (kg)		0.7

Table 25 (microfiche): Plant macrofossils from 10th century contexts
(Period II)

Taxa are represented by fruits or seeds except where indicated.

Notes: (a) Pinnule and stem fragments; (b) Siliqua joints; (c) Seeds;
(d) Capsule fragments; (e) Leaf fragments; (f) Flowers; (g) Pod
fragments; (h) Carbonised cotyledon; (i) Fragments of
sclerenchyma from pods of ?Genista or Ulex; (j) Nutshell
fragments; (k) Stem and leaves; (l) Fragments; (m) Bifacial;
(n) Trifacial; (o) Carbonised; (p) Small Poa-sized caryopses;
(q) Medium-size; (r) Large Bromus-type caryopses; (s) Culm
nodes; (t) Awn fragments; (u) Fragments of florets; (v) Rachis
fragments comprising approximately 26 nodes.

Context no.		90	123
Sample no.		3	13
<u>Pteridium aquilinum</u> (L) Kuhn	(a)	-	+
Filicales indet.	(a)	-	+
<u>Ranunculus acris/repens/bulbosus</u>		2	11
<u>Ranunculus sceleratus</u> L		1	-
<u>Ranunculus flammula</u> L		-	3
<u>Papaver argemone</u> L		10(?)	-
<u>Brassica/Sinapis</u> sp		22	16
<u>Raphanus raphanistrum</u> L	(b)	4	6+frags+1(o)
	(c)	-	1
<u>Thlaspi arvense</u> L		10	-
Cruciferae indet.		-	1
<u>Reseda luteola</u> L		-	1
<u>Hypericum</u> sp		1	-
<u>Silene</u> sp		2	2
<u>Lychnis flos-cuculi</u> L		1	-
<u>Agrostemma githago</u> L		-	10+frags

<u>Stellaria media</u> -type		34	7
<u>Stellaria graminea/palustris</u>		7	9
<u>Stellaria/Cerastium</u> sp		-	3
<u>Spergula arvensis</u> L		-	5
<u>Scleranthus annuus</u> L		1	1
Caryophyllaceae indet.		4	1
<u>Chenopodium album</u> L		10	37
<u>Atriplex</u> sp		7	8
Chenopodiaceae indet.		9	7
<u>Linum usitatissimum</u>	(c)	+	3+frags
	(d)	+	+
<u>Ilex aquifolium</u> L	(e)	-	+
<u>Trifolium</u> sp	(f)	-	+
	(g)	-	+
Leguminosae indet.	(h)	1	-
Leguminosae indet.	(i)	-	+
<u>Filipendula ulmaria</u> (L) Maxim		-	1
<u>Potentilla</u> sp		2	4
<u>Fragaria vesca</u> L		-	1
<u>Aphanes arvensis/microcarpa</u>		-	6
<u>Torilis</u> cf. <u>japonica</u> (Houtt) DC		8	-
<u>Apium</u> cf. <u>graveolens</u> L		3	6
<u>Aethusa cynapium</u> L		1	-
<u>Daucus carota</u> L		1	-
Umbelliferae indet.		3	-
<u>Polygonum aviculare</u> agg.		9	7
<u>Polygonum persicaria</u> L		-	22
<u>Polygonum lapathifolium</u> L		4	25
<u>Polygonum convolvulus</u> L		-	9+frags
<u>Polygonum</u> sp		7	9

<u>Rumex acetosella</u> agg.		55	23
<u>Rumex</u> sp		27	8
<u>Urtica urens</u> L		6	2
<u>Urtica dioica</u> L		38	6
<u>Humulus lupulus</u> L		-	3
<u>Corylus avellana</u> L	(j)	+	+
<u>Quercus</u> sp	(c)	-	+
<u>Calluna vulgaris</u> (L) Hull	(k)	-	+
<u>Anagallis arvensis</u> -type		2	6
<u>Solanum</u> sp		-	1
<u>Pedicularis palustris</u> L		1	2
<u>Euphrasia/Odontites</u> sp		2	-
<u>Mentha arvensis/aquatica</u>		1	-
<u>Lycopus europaeus</u> L		1	-
<u>Prunella vulgaris</u> L		-	11
<u>Galeopsis tetrahit/speciosa</u>		6	8
<u>Teucrium</u> sp		-	3
Labiatae indet.		-	2
<u>Plantago major</u> L		5	2
<u>Galium</u> sp		-	1
<u>Sambucus nigra</u> L		5	-
<u>Anthemis cotula</u> L		413+1 (o)	68
<u>Achillea millefolium</u> L		1	2
<u>Centaurea</u> sp	(l)	+	-
<u>Lapsana communis</u> L		239	10
<u>Hypochaeris</u> sp		-	2
<u>Sonchus asper</u> L		6	1
Compositae indet.		3	1
<u>Triglochin maritima</u> L		2	-
<u>Juncus</u> sp		+	+
<u>Eleocharis</u> sp		2	4

<u>Scirpus/Schoenoplectus</u> sp		-	1
<u>Carex</u> sp	(m)	-	9
<u>Carex</u> sp	(n)	8	15
<u>Anisantha sterilis</u> (L) Nevski	(o)	1	-
Gramineae indet.	(p)	18	213
Gramineae indet.	(q)	1 (o)	10+1 (o)
Gramineae indet.	(r)	-	15
Gramineae/Cereal	(s)	-	17
<u>Triticum aestivum</u> s.l.	(o)	-	1
<u>Avena</u> sp	(o)	2	5
<u>Avena</u> sp	(o,t)	+	-
<u>Avena</u> sp	(u)	1+frags	frags
<u>Secale cereale</u> L		-	+(v)
Indeterminate seeds		41	51
Indeterminate buds/bud scales		+	+
Indeterminate stems etc.		+	+
Sample weight (kg)		1	1

Table 26 (microfiche): Plant macrofossils from contexts 161, 162 and 163, fills within a wooden barrel (Period VI)

Taxa are represented by fruits and seeds except where indicated.

Notes: (a) Pinnule and stem fragments; (b) Seeds; (c) Siliqua and stem fragments; (d) Capsule fragments; (e) Partly degraded pod with seed; (f) Flower fragments; (g) Endocarp tissue; (h) Shoots, stems and leaves; (i) Mineralised internal tissues; (j) Floret; (k) Carbonised; (l) Caryopses; (m) Small caryopses; (n) Large caryopses, some mineralised; Bromus sp present; (o) Degraded and fragmentary tissue ?cereal inflorescence bracts; (p) Periderm fragments; (q) Culm nodes; (r) Rachis fragments comprising five nodes; (s) Glume wheat spikelet fork.

Context no.	161	162	163	163
Depth (cm)	60-70	70-80	80-90	90-96
Sample no.	10	16	10	10
<u>Pteridium aquilinum</u> (L) Kuhn (a)	+	+	+	-
<u>Papaver argemone</u> L	4+1cf	2	-	-
<u>Brassica</u> spp (including <u>B.rapa</u>)	9	118	+	-
<u>Raphanus raphanistrum</u> (b)	-	1	+	-
(c)	+	+++	+	-
<u>Reseda luteola</u> L	1	-	-	-
<u>Reseda</u> sp	-	-	1	-
<u>Silene</u> sp	2	7	-	-
<u>Lychnis flos-cuculi</u> L	1+1cf	-	-	-
<u>Agrostemma githago</u> L	1+fr	4+fr	-	+
<u>Stellaria media</u> -type	9	2	3	3
Caryophyllaceae indet.	1	-	-	-
<u>Montia fontana</u> L subsp <u>chondrosperma</u>	-	-	1	-
<u>Chenopodium album</u> L	49	45	12	10

<u>Chenopodium</u> cf. <u>murale</u> L		-	-	5	1
<u>Atriplex</u> sp		4	3	2	-
Chenopodiaceae indet.		4	-	4	1
<u>Linum usitatissimum</u> L	(b)	-	4	-	-
<u>Medicago lupulina</u> -type	(e)	-	1	-	-
<u>Trifolium</u> sp	(f)	-	3	-	-
<u>Rubus</u> cf <u>idaeus</u> L		-	-	-	1
<u>Rubus fruticosus</u> agg		-	-	-	1
<u>Potentilla</u> sp		2	-	-	-
<u>Fragaria vesca</u> L		-	104	-	-
<u>Malus sylvestris</u> /domestica	(b)	-	9+fr	-	-
	(g)	-	+	+	-
<u>Foeniculum vulgare</u> Miller		-	2	-	-
<u>Aethusa cynapium</u> L		3	-	-	-
<u>Chaerophyllum</u> -type		-	1	-	-
Umbelliferae indet.		1	-	-	-
<u>Euphorbia helioscopia</u> L		-	fr	1	-
<u>Polygonum aviculare</u> agg		2	2	-	-
<u>Polygonum lapathifolium</u> L		2	19	2	-
<u>Polygonum convolvulus</u> L		-	3+fr	-	-
<u>Polygonum</u> sp		-	1	1	-
<u>Rumex acetosella</u> agg		5	1	1	2
<u>Rumex</u> sp		4	2+fr	1	1
Polygonaceae indet.		-	-	-	1
<u>Urtica dioica</u> L		2	1	8	5
<u>Urtica urens</u> L		11	-	10	25
<u>Calluna vulgaris</u> (L) Hull	(h)	+	+	+	+
<u>Hyoscyamus niger</u> L		1	-	-	-
<u>Solanum nigrum</u> L		1	1	4	3
<u>Lithospermum</u> -type	(i)	-	1	-	-

<u>Mentha arvensis/aquatica</u>		-	1	-	-
<u>Stachys</u> sp		1	4	-	-
<u>Lamium</u> sp		1	-	1	2
<u>Plantago major</u> L		-	1cf	-	-
<u>Sambucus nigra</u> L		-	1fr	5+fr	8
<u>Valerianella dentata</u> (L) Poll		-	-	1	-
<u>Bidens tripartita</u> L		-	1	-	-
<u>Anthemis cotula</u> L		4	8	1	-
<u>Chrysanthemum segetum</u> L		2	-	-	-
<u>Centaurea cyanus</u> L		1+fr	14+fr	-	-
<u>Lapsana communis</u> L		1	-	-	2
<u>Sonchus asper</u> (L) Hill		-	1	-	-
Compositae indet.		1	4	-	-
<u>Juncus</u> spp		-	-	-	+
<u>Carex</u> spp		4	1	-	1
<u>Avena sativa</u> L	(j,k)	-	-	1	-
<u>Avena</u> sp	(k,l)	1	-	4	1cf
<u>Triticum aestivum</u> s.l.	(k,l)	-	-	-	1+1cf
<u>Hordeum</u> sp	(k,l)	-	-	-	1
<u>Bromus</u> sp	(k,l)	-	-	-	1cf
Gramineae indet.	(k,l)	1	-	-	-
<u>Panicum miliaceum</u> L (?)	(l)	-	2	-	-
Gramineae	(l,m)	-	1	-	-
Gramineae	(l,n)	-	47	-	-
?Cereal indet.	(o)	-	+	-	-
Cereal indet.	(p)	-	+	-	-
Gramineae/Cereal indet.	(q)	-	19	-	-
<u>Secale cereale</u> L	(r)	-	+	-	-
<u>Triticum</u> sp	(s)	-	1	-	-
<u>Ficus carica</u> L		-	28	-	-
Indeterminate seeds etc		17	30	10	2

stem fragments	+	+	-	-
epidermis fragments	-	+	-	-
buds	+	-	-	-
wood chips	+	-	+	-
Mineralised twine/string	-	+	-	-
Sample weight (kg)	0.5	1.0	0.5	0.5

Table 27 (microfiche): Plant macrofossils from column sample 12

Taxa are represented by fruits or seeds except where indicated.

Notes: (a) Oogonia. (b) Pinnules and petiole fragments. (c) Nos. refer to whole aggregate fruits except for

(j). (d) Leaf fragments. (e) Carbonised. (f) Caryopsis. (g) Floret bases. (h) Rachis nodes. (i) Awn

fragments. (j) "Fruit lids". (k) Cotyledons. (l) Mineralised fragments. n.b. 104 = 175

Context no.	52	54	78	78	78	95	96	97	97	104	104	104	104	104	104
Depth (cm)	45-56	56-65	65-75	75-85	85-93	93-104	104-113	113-123	123-133	133-143	143-153	153-163	163-173	173-183	183-195
Characeae (a)	-	-	-	-	-	-	-	-	-	-	4	1	-	-	-
<i>Pteridium aquilinum</i> (L.) Kuhn (b)	-	-	-	-	-	-	-	+	-	-	-	+	-	-	-
<i>Caltha palustris</i> L.	-	-	-	-	-	-	-	-	-	-	2	1cf	-	-	1
<i>Ranunculus acris/repens/bulbosus</i>	-	-	-	-	1	4	3	27	6	1	19	5	8	-	1
<i>Ranunculus flammula</i> L.	-	-	-	-	-	-	-	1	-	-	-	-	-	-	-
<i>Ranunculus sceleratus</i> L.	2	-	-	-	-	2	-	1	-	-	-	-	-	-	-
<i>Ranunculus</i> subg <i>Batrachium</i>	-	-	-	-	-	-	-	-	-	1	21	10	22	-	4
<i>Ranunculus</i> sp	-	-	-	-	-	1	-	-	-	-	-	-	-	-	-
<i>Nymphaea alba</i> L.	-	-	-	-	-	-	-	-	-	-	-	-	-	-	16
<i>Nuphar lutea</i> (L.) Sm.	-	-	-	-	-	-	-	-	-	-	2	-	2	-	-
<i>Papaver argemone</i> L.	-	-	-	-	5	1	-	-	-	-	-	-	-	-	-
<i>Papaver</i> sp	-	-	-	-	-	1	-	-	-	-	-	-	-	-	-
<i>Brassica</i> sp	-	-	-	-	6	6	1	10	-	-	-	-	-	-	-
<i>Raphanus raphanistrum</i> L.	-	-	-	-	+	2+1(e)	-	1	-	-	-	-	-	-	-
<i>Rorippa islandica</i> (Oeder) Borbas	-	-	-	-	-	-	-	1	-	-	-	-	-	-	-
Cruciferae indet.	-	-	-	-	-	-	-	-	-	-	1	-	-	-	-
<i>Reseda luteola</i> L.	-	-	-	-	-	-	-	2	-	-	-	-	-	-	-
<i>Reseda</i> sp	-	-	-	-	1	1	-	-	-	-	-	-	-	-	-
<i>Hypericum</i> sp	-	-	-	-	-	1	1	-	2	1	3	1	-	-	-
<i>Silene</i> sp	-	-	-	-	2	1	-	-	-	-	-	-	-	-	-

<i>Lychnis flos-cuculi</i> L.	-	-	-	-	-	-	-	-	18	1	13	4	3	-	-
<i>Agrostemma githago</i> L.	-	-	-	-	1(e)	+	-	2	-	-	-	-	-	-	-
<i>Stellaria media</i> -type	1	-	-	-	99	125	23	29	-	-	1	-	-	-	-
<i>Stellaria palustris/graminea</i>	-	-	-	-	-	-	-	1	-	-	-	1	-	-	-
<i>Spergula arvensis</i> L.	-	-	-	-	-	1	-	-	-	-	-	-	-	-	-
Caryophyllaceae indet.	-	-	-	-	1	5	-	-	-	-	1	-	-	-	-
<i>Chenopodium album</i> L.	16	1	20	9	56	79	87	106	-	-	1	-	1	1	-
<i>Chenopodium rubrum/glaucum</i>	-	-	-	-	-	-	-	1	-	-	-	-	-	-	-
<i>Beta vulgaris</i> L.	(c)	3(j)	-	1+2(j)	1	-	-	-	-	-	-	-	-	-	-
<i>Suaeda maritima</i> (L) Dumort	-	-	1	-	-	-	-	1	-	-	-	-	-	-	-
<i>Atriplex</i> sp	-	-	-	-	1	3	3	11	-	-	-	-	-	-	-
Chenopodiaceae indet.	2	-	5	-	12	31	23	33	-	-	-	-	-	-	-
<i>Ilex aquifolium</i>	(d)	-	-	-	-	-	-	+	-	-	-	-	-	-	-
<i>Vicia/Lathyrus</i> sp	(e)	-	-	-	3(k)	-	-	-	-	-	-	-	-	-	-
cf <i>Pisum</i> -type	-	-	1	-	-	-	-	-	-	-	-	-	-	-	-
<i>Vicia faba</i> L. var <i>minor</i>	(e)	1	-	-	-	-	-	-	-	-	-	-	-	-	-
<i>Filipendula ulmaria</i> (L) Maxim	-	-	-	-	-	-	-	1	-	-	1	-	-	-	1
<i>Rubus fruticosus</i> agg	-	-	1	3	-	5	2	3	-	-	1	-	1	-	-
<i>Rubus idaeus</i> L.	-	-	-	-	-	-	1cf	-	-	-	-	-	1cf	-	-
<i>Rubus</i> sp	-	-	-	-	1	-	2	-	-	-	-	-	-	-	-
<i>Potentilla</i> sp	-	-	-	-	-	-	-	2	-	-	-	-	-	-	-
<i>Aphanes arvensis/microcarpa</i>	-	-	-	-	-	-	-	5	-	-	-	-	-	-	-
<i>Prunus</i> sp	-	-	-	-	-	-	-	+	-	-	-	-	-	-	-
<i>Lythrum salicaria</i> -type	-	-	-	-	-	-	-	-	-	-	1	3	2	-	-
<i>Epilobium</i> sp	-	-	-	-	-	-	-	-	10	1	7	1	-	-	-
<i>Hydrocotyle vulgaris</i> L.	-	-	-	-	-	-	-	-	-	-	-	1	-	-	-
<i>Conium maculatum</i> L.	-	1	-	-	-	-	-	1	-	-	-	-	-	-	-

<i>Apium</i> sp	-	-	-	-	-	1cf	-	1cf	3	-	-	-	-	-	-
<i>Apium/Berula</i> sp	-	-	-	-	-	-	-	-	-	3	1	-	-	-	-
<i>Oenanthe aquatica</i> (L) Poirer	-	-	-	-	-	-	-	-	-	-	7	4	5	-	-
<i>Cicuta virosa</i> L	-	-	-	-	-	-	-	-	-	5	-	-	-	1	-
Umbelliferae indet.	-	-	-	-	-	1	-	-	2	-	-	-	-	-	2
<i>Euphorbia helioscopia</i> L	-	-	1	-	1	-	-	-	-	-	-	-	-	-	-
<i>Polygonum aviculare</i> agg.	-	-	-	-	-	-	-	5	-	-	-	-	-	-	-
<i>Polygonum persicaria/lacathifolium</i> -type	-	-	-	-	-	-	-	186	-	-	-	-	-	-	-
<i>Polygonum convolvulus</i> L	-	-	-	-	-	-	-	2	-	-	-	-	-	-	-
<i>Polygonum</i> sp?	-	-	-	1(e)	11	6	-	-	6	-	-	3	-	-	-
<i>Rumex acetosella</i> agg.	-	-	-	-	-	11	-	14	-	-	3	-	-	-	-
<i>Rumex</i> sp	-	-	2+1(e)	-	1	118	-	19+1(e)	9	1+1(e)	6	2	6	2	-
<i>Urtica urens</i> L	32	1	29	36	304	1415	15	19	-	-	-	-	-	-	-
<i>Urtica dioica</i> L	67	8	14	19	44	52	30	76	95	189	85	35	33	89	4
<i>Alnus glutinosa</i> (L) Gaertner	-	-	-	-	1	-	-	-	-	-	-	-	-	-	-
<i>Corylus avellana</i> L	+	-	+(e)	+(e)	+	-	-	+	-	-	-	-	-	-	-
<i>Anagallis arvensis</i> -type	-	-	-	-	-	-	-	4	-	-	-	-	-	-	-
<i>Glaux maritima</i> L	-	-	-	-	-	1	-	-	-	-	-	-	-	-	-
<i>Menyanthes trifoliata</i> L	-	-	1	-	-	-	-	-	-	1	-	-	-	3	11
<i>Nyctotia</i> sp	-	-	-	-	-	-	-	-	-	-	15	4	-	-	-
<i>Nyctotia niger</i> L	-	-	-	-	-	1	1	-	-	-	-	-	-	-	-
<i>Solanum dulcamara</i> L	-	-	-	-	-	-	-	-	-	-	-	-	1cf	-	-
<i>Solanum nigrum</i> L	2	1	-	1	-	1	-	-	-	-	1	-	-	-	-
<i>Solanum</i> sp	-	-	-	-	-	-	-	1	-	-	-	1	-	-	-
<i>Scrophularia</i> sp	-	-	-	-	-	-	-	-	2	5	-	-	-	-	-
<i>Mentha arvensis/aquatica</i>	1	-	-	2	1	2	2	5	19	5	10	5	4	-	-
<i>Lycopus europaeus</i> L	-	-	-	-	-	-	-	1	1	2	1	-	2	-	20
<i>Lamium</i> sp	40	5	9	10	78	7	2	1	-	-	-	-	-	-	-

<i>Galeopsis tetrahit/speciosa</i>	-	-	-	-	-	-	-	4	-	-	-	-	-	-	-
Labiatae indet.	1	-	-	1	-	-	-	2	-	-	-	-	-	-	-
<i>Plantago major</i> L.	-	-	-	-	-	4	-	-	-	-	-	-	-	-	-
<i>Plantago lanceolata</i> L. (e)	-	-	-	1	-	-	-	-	-	-	-	-	-	-	-
<i>Sambucus nigra</i> L.	8	1	14	12	13	11	29	26	-	3	-	-	2	-	-
<i>Valerianella dentata</i> (L.)	-	-	-	-	1	-	-	-	-	-	-	-	-	-	-
<i>Bidens cernua</i> L.	-	-	-	-	-	-	-	-	-	-	1	-	-	-	-
<i>Bidens</i> sp.	-	-	-	-	-	-	-	-	-	-	2	-	-	-	-
<i>Anthemis cotula</i> L.	-	-	3(e)	-	2(e)	6+1(e)	-	24	-	-	-	-	-	-	-
<i>Tripleurospermum maritimum</i> (L.) Koch	-	-	-	-	-	-	1(e)	-	-	-	-	-	-	-	-
<i>Centaurea cyanus</i> L.	-	-	-	-	-	2+1(e)	-	-	-	-	-	-	-	-	-
<i>Centaurea cf cyanus</i> L.	-	-	-	-	-	8	-	-	-	-	-	-	-	-	-
<i>Lapsana communis</i> L.	-	-	1(e)	-	-	37	-	2	-	-	-	-	-	-	-
<i>Sonchus oleraceus</i> L.	-	-	-	-	-	-	1	1	-	-	-	-	-	-	-
<i>Sonchus asper</i> (L.) Hill	-	-	-	-	-	-	-	1	-	-	-	-	1	-	-
Compositae indet.	-	-	-	-	-	-	1(e)	-	1	-	1	1	-	-	1
<i>Alisma plantago-aquatica</i> L.	-	-	-	-	-	-	-	1	-	1	6	7	6	-	-
Alismataceae indet.	1	-	-	-	-	-	-	-	-	-	-	-	-	-	-
<i>Triglochin maritima</i> L.	-	-	-	-	-	1	-	-	-	-	-	-	-	-	-
<i>Potamogeton</i> sp.	-	-	-	-	-	-	-	-	-	-	-	1	2	-	4
<i>Zannichellia palustris</i> L.	-	-	-	-	-	-	-	-	-	-	1	1	-	-	-
<i>Juncus</i> spp.	+	+	-	-	-	+	+	+	+	-	+	+	+	-	-
<i>Iris pseudacorus</i> L.	-	-	-	-	-	-	-	-	-	-	+(cf)	+(cf)	-	-	-
<i>Typha</i> sp.	-	-	-	-	-	-	-	-	1	1	2	-	-	1	2
<i>Eleocharis</i> sp.	-	-	-	-	-	3	-	3	-	-	-	2	3	1	-
<i>Scirpus cf lacustris</i> (L.)	2	-	-	-	-	2	2	-	-	1	-	1	16	2	104
<i>Carex vesicaria/rostrata</i>	-	-	-	-	-	-	-	-	-	-	-	-	-	-	6

<i>Carex</i> sp (trifacial)		3	-	5	1	6	1	10	3	45	43	30	32	7	-	24
<i>Carex</i> sp (bifacial)		-	-	-	-	1	-	1	2	4	2	-	-	1	-	-
<i>Phragmites australis</i> (Cav) Steudel		-	-	-	-	-	-	-	+	-	+	+	-	-	-	-
Gramineae indet.		1	-	2(e)	1(e)	3(e)	7+1(e)	-	7+1(e)	-	3	17	3	1	-	-
<i>Bromus mollis/secalinus</i>	(e)	-	-	4	2	1	7	-	3	-	-	-	-	-	-	-
Cereal indet.	(e)	-	-	5	2	2	6+fr(1)	1	-	-	-	-	-	-	-	-
<i>Avena</i> sp	(e,f)	1	1	17	24	20	21	3	-	-	-	-	-	-	-	-
<i>Avena</i> sp	(e,g)	-	-	2	1	4	3	-	-	-	-	-	-	-	-	-
<i>Avena</i> sp	(e,i)	-	-	+	-	-	-	-	-	-	-	-	-	-	-	-
<i>Hordeum</i> sp	(e,f)	-	-	9	1	4	7	5	-	-	-	-	-	-	-	-
<i>Hordeum</i> sp	(e,h)	-	-	1	-	-	-	-	-	-	-	-	-	-	-	-
<i>Triticum</i> sp	(e,f)	-	-	2	-	-	-	-	-	-	-	-	-	-	-	-
<i>Secale cereale</i> L	(e,f)	-	-	-	-	-	-	-	1	-	-	-	-	-	-	-
Indeterminate seeds etc		11	-	6	7	17	43	8	21	20	14	42	22	17	-	15
stem/rhizome frags		-	-	-	-	-	-	-	-	-	-	+	-	-	+	-
leaf frags		-	-	-	-	-	-	-	+	-	-	-	+	+	+	-
twigs		-	-	-	-	-	-	-	-	-	-	-	-	+	+	-
wood		-	-	-	-	-	-	-	-	-	-	-	-	+	-	-
thorns		-	-	-	-	-	-	-	+	-	-	-	-	-	-	-
buds		-	-	-	-	-	-	-	+	-	-	-	+	-	-	-
catkin frags		-	-	-	-	-	-	-	+	-	-	-	-	-	-	-
Sample wt (kg)		1.0	1.0	1.0	1.0	1.0	1.0	1.0	1.0	0.5	0.5	0.5	0.5	0.5	0.5	0.5

D10

Table 29. Wood

Context no.	Description	Cross-sectional Dimensions (well preserved pieces only)	Taxon
5	Large vertical oak post. Surfaces decayed and spongy.	-	<u>Quercus</u> sp
74	Large irregular wood fragment. Decayed, spongy surfaces.	-	<u>Quercus</u> sp
27	Badly rotted fragments of plank/board	-	<u>Quercus</u> sp
29	Badly decayed stake tip.	-	<u>Quercus</u> sp
36a	Large rotted piece of wood.	-	<u>Quercus</u> sp
36b	Plank/board. Tangential.	85 x 33 mm	<u>Pinus</u> sp
36c	Two badly decayed planks/boards with broad surfaces pressed together.	-	<u>Pinus</u> sp and <u>Quercus</u> sp
36d	Fragments of thin plank/board - badly decayed.	ϕ. 5 mm thick	<u>Quercus</u> sp(7)
36e	Small shapeless wood fragment.	-	<u>Pinus</u> sp
49	Very large squared timber. Some bark.	ϕ. 250 x 340 mm	<u>Quercus</u> sp
75	Fragment probably of board.	45 x 20 mm	<u>Quercus</u> sp
86	Long badly distorted stake.	-	<u>Quercus</u> sp
91 (T30)	Decayed fragment of board. Radial.	ϕ. 65 x 20 mm	<u>Quercus</u> sp
97	(1) Slivers and chips of waste wood. (2) Twigs, compressed.	(2) 5 - 17 mm diam.	(1) <u>Quercus</u> sp
102	Plank/board fragment. Tangential. Adze-marks on one face.	100 x 23 mm	<u>Fraxinus</u> sp (narrow rings)
106	Roundwood stake with bark. Tip with one cut face.	Diam. 47 and 35 mm (compressed)	<u>Corylus</u> sp
106	Extreme tip of stake. 3 cut faces.	-	? <u>Crataegus</u> group
106 (T26)	Straight branch fragment. Bark. Half rotted away. Probable transverse cut at one end but badly rotted.	ϕ. 90 mm (estimated from surviving half of cross-section.	? <u>Corylus</u> sp
115	Large stake with multi-faceted tip. Roundwood, but bark and sapwood have rotted away.	-	<u>Quercus</u> sp
116	Large stake with multi-faceted tip. Roundwood, but bark and sapwood have rotted away.	-	<u>Quercus</u> sp

117 (T12)	?Barrel binding. Split from large branch.	-	Indeterminate
117	?Barrel stave.	25 x 10 mm	<u>Quercus</u> sp
123 (T11)	Stake cut from large wood (square cross-section). Tip with four faces.	30 x 25 mm	<u>Quercus</u> sp
128	Roundwood stake. Tip with three faces. Bark.	35 mm diam.	<u>Corylus</u> sp
129 (T9)	Roundwood stake. Tip with three faces. Bark.	ca. 85 mm diam.	Indeterminate
129 (T10)	Roundwood stake. Tip with four faces. Bark.	32 mm diam.	<u>Corylus</u> sp
134	Small fragment.	-	<u>Quercus</u> sp
133	Stake tip with one cut face. Stake made from split segment of oak.	-	<u>Quercus</u> sp
133	Roundwood stake. Tip with two faces. Bark.	30 mm diameter	<u>Corylus</u> sp
134	(1) Roundwood stake. Tip with one face. Bark. (2) Tip of roundwood stake. Three faces.	(1) ca. 45 mm diam.	Both <u>Quercus</u> sp
135	Decayed fragment of stake-tip.	-	<u>Prunus</u> sp
136	Roundwood stake. Tip with two faces. Bark.	ca. 40 mm diam.	<u>Corylus</u> sp
137	Roundwood stake. Tip with one cut face. Bark.	32 mm diam.	<u>Corylus</u> sp
138	Very tip of stake.	-	<u>Corylus</u> sp
139	Very tip of roundwood stake with some bark.	-	<u>Corylus</u> sp
140	Roundwood stake. Tip with two faces. Bark.	39 mm diam.	Indeterminate
141	Roundwood stake. Tip with two faces. Bark.	36 mm diam.	<u>Corylus</u> sp
144	Roundwood stake. Tip with four faces. Bark.	30 mm diam.	<u>Corylus</u> sp
145a	Roundwood stake. Tip with one face. Bark.	47 mm diam.	<u>Betula</u> sp
145b	Roundwood stake. Tip with two faces. Bark.	40 mm diam.	<u>Corylus</u> sp
146	Large stake made from mature wood, squared.	60 x 50 mm	<u>Quercus</u> sp
147	(1) Fragmentary stake-tip. (2) Wood chips.	-	<u>Corylus</u> sp
148	Roundwood stake. Tip with three faces. Bark	-	Indeterminate diffuse porous

(dried out during storage).

149	Roundwood stake. Tip with four faces. Bark.		43 mm diam.	<u>Corylus</u> sp
150	Roundwood stake. Tip with three faces. Bark.		37 mm diam.	<u>Corylus</u> sp
151	(1) Roundwood stake. Tip with three faces. Bark.		(1) c. 55 mm diam.	(1) <u>Corylus</u> sp
	(2) Waste sliver of wood from trimming stake-tip.		-	
152	Roundwood stake. Tip with three faces. Bark.		-	<u>Corylus</u> sp
153	Roundwood stake. Tip with two faces. Bark.		34 mm diam.	<u>Corylus</u> sp
154	Roundwood stake. Tip with two faces. Bark.		c. 75 mm diam.	<u>Crataegus</u> -group
155	(1) Roundwood stake. Tip with three faces. Bark.		52 mm diam.	(1) <u>Corylus</u> sp
	(2) Waste slivers of wood from trimming stake-tip.			(2) Indet. diffuse porous
156 (T14)	Roundwood stake. Tip with one cut face. Bark.		c. 65 mm diam.	<u>Corylus</u> sp
157a)		a	32 x 21 mm	<u>Corylus</u> sp
b)		b	25 x 15 mm	<u>Corylus</u> sp
c)	Roundwood stems with bark from wattle fence.	c	17 x 10 mm	<u>Corylus</u> sp
d)	Mostly compressed, some deformed.	d	17 x 10 mm	Indet. diffuse porous
e)		e	20 x 11 mm	? <u>Corylus</u> sp
f)		f	25 x 15 mm	? <u>Corylus</u> sp
g)		g	17 x 14 mm	<u>Corylus</u> sp
h)		h	28 x 20 mm	<u>Corylus</u> sp
i	Withy, triangular cross-section, cut from large wood.	i	28 x 8 mm (max)	<u>Quercus</u> sp
158 (T15)	Very large irregular piece of branch.		-	Indeterminate (grain twisted)
168 (T16)	Large fragment of branch. Rotted surfaces.		-	<u>Quercus</u> sp
168 (T17)	Large irregular fragment of branch. Rotted surfaces.		-	<u>Quercus</u> sp
168 (T18)	Large very irregular wood fragment with part-rotted and part-charred surfaces. Knotty with twisted grain.		-	<u>Quercus</u> sp
168 (T19)	Large branch fragment, half rotted away. Two transverse oblique cuts at one end.		?c. 200 mm diam. (estimated from surviving cross-section)	Indeterminate

168 (T20)	Beam with notch in one side. Split from quartered branch or trunk.	90 x 55 mm	<u>Quercus</u> sp
168 (T21)	Badly decayed small wood fragments.	-	Indeterminate
168 (T22)	Fragment of quartered branch. Poorly preserved surfaces.	Original stem ? <u>Q.</u> 60 mm diam.	<u>Quercus</u> sp
168 (T23)	Stake-tip from badly rotted roundwood stake.	? <u>Q.</u> 95 mm diam.	<u>Corylus</u> sp
168 (T24)	Fragments of straight branches with bark, but half rotted away.	Up to <u>Q.</u> 55 mm diam.	<u>Quercus</u> sp
168 (T25)	Branch fragment. Crushed, with rotted surfaces. Some trimming cuts barely survive.	<u>Q.</u> 75 mm diam.	? <u>Crataegus</u> -group
170 (T27)	Roundwood stake. Tip with one cut face. Bark.	<u>Q.</u> 42 mm diam.	? <u>Corylus</u> sp
170 (T28)	Stake-tip with 4 faces. Partly decayed.	-	<u>Quercus</u> sp

Table 31. Post 49

ring width data:

Years	Ring widths (0.02mm)									
1	61	29	45	73	82	69	131	63	118	109
11	162	135	181	367	476	281	198	304	201	197
21	313	310	290	245	150	223	185	130	51	66
31	191	179	87	55	88	116	96	191	231	149
41	101	101	81	73	71	65	85	52	58	76
51	40	32	40	39	41	28	33	32	53	66
61	87	60	56	53	43	55	28	60	46	42
71	27	21	18	30	24	23	14	26	22	19
81	18	18	27	31	38	31	21	14	14	20
91	22	18	27	18	25	15	30			

details of sample:

number of rings 97, including 50 sapwood rings
 average ring width 1.84mm
 felled winter/early spring
 cross-section dimensions 350x260mm
 sample very knotty and asymmetrical

sketch:



Table 32. Documentary evidence for the excavation site and neighbouring properties 12th-17th centuries.

KP = Kirkpatricks Notes NRO Case 21 f)

Property No.1 St Clements parish

Date	(Property transactions are of messuages with buildings unless otherwise stated)	References
1287	Hugh de Bromholm quitclaim to Peter le Mouner, weyder fr.mes.once Hervey le Mercer, acquired by Peter from executors of Nich Chaumpenye (I)and(D) reversion of 40d rent, the dower of Agnes widow of John le Escot	Roll 2 m 7 NRO Case 1a)
1289	Reginald Pope fined for forbarring fish	Leet Roll NRO Case 5b)
1299	Reginald atte Brigge fined for obstructing the river	Leet Roll NRO Case 5b)
1303	(abuttal) Peter le Moper	Roll 4 m 6 NRO Case 1a)
1308	Reginald Pope to Peter le Mauner merchant	Roll 5 m 11 "
1310	(abuttal) Peter le Mounier	Roll 5 m 24 "
1330	Andrew, son of Peter le Mauner quitclaim to Ralph de Gonthorp	Roll 12 m 21 NRO Case 1b)
1332	" " " " " " to Ralph de Gonthorpe	Roll 13 m 1d "
1334	" " " " " " and Margaret, daughter Peter Le Mauner quitclaim to Ralph de Gonthorp	Roll 13 m 15 "
1339	" " " " " " quitclaim to Ralph de Gonthorp	Roll 13 m 43 "
1354	(abuttal) Hugh Blanchard	KP
1379	Adam Gees and wife Margaret to William Clere, Hugh Fastolf and William atte Gap jun., once Hugh Blanchard	Roll 14 m 5d "
1380	Hugh Fastolf of Yarmouth, clerk, William Clere of Ormesby and William atte Gap of Yarmouth to John de Lenn skinner and others, messuage with buildings and shops once Hugh de Blanchard (South abuttal: common wharf)	Roll 14 m 8 "
1385	(abuttal) tenement once Robert Blanchard	Roll 14 m 22d "
1397	Landgable John de Lenn 1/2d	Domesday Book NRO Case 17b)
1400	John de Lenn, skinner and others to John Glous and Roger Cok, lyster, mes.w.shops, price £60	Roll 16 m 4d NRO Case 1c)
1470	Landgable Joan Drury widow, once Roger Sadder 1/2d	Chamberlains' Book NRO Case 18a)
1472	John Quynay, rafwa to John Corpusty chaplain, buildings and shops	
1498	Robert Drewry, mercer to Thomas Revys, clerk and others	
1517	Rober Drury, mercer to Nicholas Sybat calandrer, mes.w.shops bought from John Mason, chaplain	Roll 21 m 27d NRO Case 1d)
1521	(abuttal) Ralph Walff, recently Robert Drury	Pell 21 m 41d "

1541 (southern part) Adrian Mase, berebruer to Vincent Tesmond, glover, three little tenements
(in margin: 'langol inter all ob.')

Roll 21 m 104d

1549 Landgable Thomas Culley (grocer, freema: 1529/30) 1/2d

Landgable 1541-1626 NRO Case 1 18d)

1570 * * * * *

1576 Assessment: Thomas Culley 30/- on goods

NRO Case 71)

1577 Muster: Mr Culley

1626 Landgable: John Allen 1/2d

1643 Subscription for regaining Newcastle: John Allen £3

Norfolk Archaeology XVIII 149-160

Property 2 St Clement's parish

Date	Reference
1287 (abuttal) Master Stephen Wyth	Roll 2 m 7 NRO Case 1a)
1302/3 Executor of Master Stephen Wyth of Yarmouth to Henry, son of Thomas le Biriclerk de Berton	Roll 4 m 6 NRO Case 1
1308 (abuttal) Master Henry de Berton	Roll 5 m 11 "
1310 Probate of Testament of Henry le Biriclerk de Berton: leaves houses to be sold	Roll 5 m 23d "
1310 Executors of Henry le Biriclerk de Berton to Bartholomew, son of Ralph Tinctor of Fybriggate, mes with houses etc.	Roll 5 m 24 "
1330 (abuttal) once Master Henry de Berton	Roll 12 m 21 NRO Case 1b)
1332/4/9 (abuttals) once " " " "	Roll 13 m 1d,15,43 "
1354 Nich de Bures to Robert Benediscite and quitclaim from Rudham	XP
1379 ?Dispute settled. Nicholas Wade mason (living?) on eastern part makes over to Thomas Cursoe and Roger de Berham (living?) on western part an 'evesdrop' 18" wide between them, to receive water from whole length of their houses there.	Roll 14 m 4d "
1379 (abuttal) tenement once Peter But	Roll 14 m 5d "
1382 (abuttal) tenement once Mabel Borel	Roll 14 m 15 "
1385 John de Huntynghon to William de Holond and Nicholas de Sibton mes. once Peter But of the fee of Richard de Harpele and John de Lynn, skinner	Roll 14 m 22d "
1394 John atte Moor to John Drake who immediately sold (?) to Robert Tolouse de Bliclyngg and others, mes. once Peter But for £32	Roll 15 m 7,10 NRO Case 1c)
1396 (abuttal) tenement once John Drake	Roll 15 m 27d "
1397 Landgable: John Drake, once John de Hontyngdon 1d	Domesday Book NRO Case 17b)
1397 Thomas Spynk et al. to Nicholas de Blakene et al. mes. once Peter But	
1470 Landgable: John Tompson, fuller, recently Nicholas Lathe parchmyner (later insertion: Thomas Hemming)	Chamberlains' Book NRO Case 18a)
1472 (abuttal) once Roger March, parcheminer	
1498 (abuttal) " " " "	
1517 (abuttal) Richard Wattys once Roger Marche parchmyner	Roll 21 m 27d NRO Case 1d)
1521 Adrian Mase, berebrewer et al. to William Wattys grocer, ten.w.bdgs.w a house and a pikewall at the east end next to the road, another house next to the river with a gable at each end and a garden, with a panel wall with a gutter 18" wide to the east of it along its length, bought from Ralph Wylkyns.	Roll 21 m 41d "
1541 (abuttal) recently John Mayes then Andrew Stubbe	Roll 21 m 1u4d "

1549	Landgable: John Mace 1d	Box Landgable	NRO Case 18d)
		1541-1626	
1556	(eastern part) John Mase bersbruer to John Sadler, grocer, buildings, gardens etc. once Peter But bought fr. Thom. Coreye grocer. Price £50	Roll 24 m 12	NRO Case 1e)
1562	John Mase alias Awdryan basket maker to Thomas Culley grocer mes. once Peter But	Roll 25 m 26d	"
1570	Landgable: Walter Taynton (hosier) 1d	Box of Landgable	NRO Case 18d
		1541-1626	
1576	Assessment: Walter Taynton 3/7 on land		NRO Case 71)
1598	Walter Taynton to Joshua Culley cap mes. etc. once Peter But, then John Roper left by John Mase to Walter except a renter w. houses on river in S.W. corner, 6 feet wide, S of Walter's shop.	Roll 32 m 9	NRO Case 1g)
1599	Thomas Chamberlain quitclaim to Joshua Culley in messuages, lands, rentals and tenements once Walter Taynton hosier	Roll 32 m 21	"
1626	Landgable: John Allen gent. occupier Peter Hawtois late Walter Thaynton 1d	Box of Landgable	NRO Case 18d)
		1541-1626	

NB. The western abuttals of entries under 1556, 1562 and 1598 read: ten. recently John Mase once part of this mes.

Property 3 St Clement's parish

Date	Reference
1303, 1310 (abuttals) Reginald Pope, fishman	Roll 4 m 6, NRO Case 1a)
	Roll 5 m 11 "
1354 Anabel de Bathele once Reginald Pope (abuttal)	XP
1382 John de Gunton to John de Hocham, fuller and others messuage w. buildings and garden once Nicholas de Bures	Roll 14 m 15 NRO Case 11)
1385 (abuttal) tenement once William Gerard	Roll 14 m 22d "
1396 John de Hokham le Fullere to Roger de Blickyngg merchant 13/4 annual rent	Roll 15 m 27d NRO Case 1c)
1397 Landgable: John de Hocham 1/2d	Domesday Book NRO Case 17b)
1397 (abuttal) John de Hocham	
1470 Landgable: John Baly blekster, recently Robert Baly 1/2d	Chamberlains' Book NRO Case 18a)
154 ^c Landgable: Edmond Wood, late John Balye 1/2d	Box of Landgable NRO Case 18d
	1541-1626
1556,62 (abuttal) Robert Baly, once John Baly	Roll 24 m 12, NRO Case 1e)
	Roll 25 m 26d
1570 Landgable: Robert Wood, once John Baly 1/2d	Box of Landgable as above
1577 Muster: Mr Wood	
1598 (abuttal) tenement and land now Robert Wood Knight	
1626 Landgable: Robert Wood, alderman, late John Baly 1/2d	Box of Landgable as above

Property 4 The Excavation Site St Edmund's parish

Date	Reference
c 1187 (Cartulary of Waltham Abbey) Robert Benne pledges all his Norwich properties to Jurnet, jew of Norwich	BL Cotton Tib. C ix f120d
c 1220 " " " " Norwich rental including 5/- from message of Nicholas the fishman	" " " " f227d
?1230 " " " " " " " " " " similar	" " " " f235d
?1240 " " " " " " " " " "	" " " " f227
1242 Waltham Abbey exempted from Royal Dues	
1285 on. Property 4 appears in Norwich Court Rolls as 'message of the Abbot of Waltham' on abuttals of Properties 3 and 5 until the Dissolution	
1291 Index Monasticon mentions one property only belonging to Waltham Abbey in Norwich, in St Peter Mancroft parish	ed. Taylor R. 1821, 63
1320 (Cartulary of Waltham Abbey) reference to a Norwich rent of 20/-	BL Cotton Tib. C ix f144d
1397 etc. Norwich Landgable Rents. Property absent from lists.	
1399 Norwich Court Roll: John Clerk vicar of Redenhale sub-leases message belonging to Waltham Abbey in St Clement, with rents from tenements in St Clement, St Edmund and St Peter Mancroft to a group of Norwich citizens.	Roll 15 m 37d NRO Case 1c)
1540 Surrender of Waltham Abbey to Henry VIII	
1540 (Cartulary of Waltham Abbey) rental: 20/- from three tenements let to farm in town of Norwich	PRO SC12/6/64
1545 Sale of property in Norwich formerly of Waltham Abbey to John Eyer	Calendar of Letters and Papers of Henry VIII Vol XX Part II lg.282(37)
1549 Landgable: tenements late Abbot of Waltham, fee unknown	Landgable 1541-1626 NRO Case 1 18d)
1568 Property 4 in hands of Robert Wood	Roll 26 m 70 Allen to Clere.Abuttal
1760) Ale House Recognisances. W.part of Property 4 (a dyer))
1763) had become a public house known as The Dyers Arms, later (a bricklayer)) NRO Case 14
1806) the Dyers. and was occupied by (a woolcomber))
1816) A Friendly Society met in the Jolly Dyers P.H. St Edmund's parish	
1825)	

Property 5 St Edmund's parish

Date	Reference
1295 Ralph de Saxthorp tanner to Roger de Pulham, messuage including vessels and tools on the premises	Roll 2 m 49d NRO Case 1a
1297 Quitclaim from widow of Ralph de Saxthorp to Roger de Pulham tanner	Roll 2 m 54d "
1306 Roger Pricke of Pulham, tanner to Ralph Sharpe of Langham chaplain	Roll 4 m 24d "
1321 (eastern part) John de Brunfield clerk to Master Firmin of Lavenham, rector of Rollesbi	Roll 9 m 18 NRO Case 11)
1329 (western part) William de Possewyk chaplain and Clement Albon of Swathefield, executors of Master John de Wyclewode once Rector of Filby quitclaim to John de Felmingham	Roll 12 m 11 "
1331 (western part) John de Felmingham to Master Firmin de Lavenham, Archdeacon of Subire	Roll 12 m 27 "
1349 Olive de Drayton to Walter Everard	IP
1358 John of Ely to John Cove, clerk	IP
1360 ? View of Arms. Master John of Ely	Hudson and Tingey. Records of City of Nch.II 400
1384 Thos de Hemenale to John de Catton, parson of Eccles and John Wade, clerk messuage once Master John Cove	Roll 14 m 20d
1414 (abuttal) John Wade, notary	IP
1457 once John Cok, notary	IP
1494 Philip Calthorp, Knight	IP
1535 Robert Curson, carpenter	IP
1546 Edmund Warden waxchandler	IP
1547 Edmund Warden to Alexander Chapman, gent. bought from William Hast worstedweaver, Edm.Hart dier et al	Roll 23 m 1 NRO Case 1d)
1541-8 Landgable: Alexander Chapman, late Robert Davys 1d	IP
1549 Landgable: Edmund Warden, late Robert Davy 1d	Box Landgable NRO Case 18d 1541-1626
1555 Alexander Chapman de Ringthorp armiger to Margaret Chapman his daughter	Roll 24 m 7 "
1568 Guy Allen and wife Alice, once wife of Robert Trull calendrer to Edward Clere gent. to inc. lead and brass basins	Roll 26 m 70 NRO Case 1e)
1570 Landgable: Edward Clere, late John Aldriche 1d	Box of Landgable as above
1589 Thomas Anguish mercer to Margaret Sparrowe widow et al. messuage with lead and brass basins	Roll 30 m 27 NRO Case 1f)
1626 Landgable: Edward Clere esq. for tenement late John Alldrich, Henry Bacon and others 1d	Box of Landgable as above

Property 6 St Edmund's parish

Date	Reference
1295) abuttal John de Swanton	Roll 2 m 49d NRO Case 1a)
1297)	Roll 2 m 54d "
1301/2 (eastern part) Edmund de Swathing and Roger Gildenwater to John But, merchant, mes etc once James Knot (western part abuttal) William Albon	Roll 4 m 2 "
1301/2 (eastern part) Edmund de Swathing quitclaim, ?to John But, all annual rents once James Knots, except 2/- owing to Rog. Gildenwater	Roll 4 m 2 "
1306 John But merchant to William Albon clerk (one part of an exchange). Mentions landgable rent of 1d	Roll 4 m 22d "
1306 (western part - abuttal) mes. John de Swanton	Roll 4 m 24d "
1312 (whole property?) Henry de Semperingham parson of Bauseye to William Albon and w. Agnes to form part of her dower if she should be widowed (with another property on N. side of Fishergate opposite this one).	Roll 6 m 6d "
1318 Ralph de Baketon master of Hospital of Mary Magdalen and Henry de Sydestrond to William to Witton, Prior of Bromholm, once William Albon	Roll 8 m 14 NRO Case 11)
1321 (abuttal) messuage of Prior and Chapter of Bromholm, once William Albon	Roll 9 m 18 "
1349 (abuttal) " " " " " " " "	XP
1365 Prior and Chapter of Bromholm to John de Salle and John Atte Mcr de Haydon, messuage and domus	XP
1384 (abuttal) messuage of John of the Moor	XP
1414 Thomas Moore, clerk to his brothers John and James, messuage once their father's	XP
1464 new-built. left to 12 years to Elizabeth Clere	
1494 Edmund Moore to Nicholas Goldwelle	
1505 to Rober Peyton	XP
1526 ? Goldthorp to Clere	XP
1547 (abuttal) Robert Clere, knight	Roll 23 m 1
1549 Landgable. John Clere, Knight messuage lats Robert Clere and Nicholas Goldwell 1d	Box of Landgable NRO Case 18d) Rents 1341-1626
1555 (abuttal) late Robert Clere Knight	Roll 24 m 7 NRO Case 1c)
1570 Landgable Edward Clere, esq. 1d	Landgable as above
1570 Assessment for the Poor: Mr Cleere	Tillet Scrapbook
1589 (abuttal) late Robert Clere, Knight	Roll 30 m 37 NRO Case 1d)
1626 Landgable "in occupation Mrs Pettus, late Edward Clere esq. for his mes. late Sir John Clere kt. 1d	Landgable as above

Plot 7 St Edmund's parish

Date		Reference
1268	Geoffrey Sifteferdhing sued Stephen le Blund for entering his courtyard in St Edmund just before midnight on August 30th 1267, and with his followers breaking violently into his house, where he was sleeping. They stole linen and bedlinen from there, a brass pan from the kitchen, knocked down and carried off all the pears and apples in his orchard. (This of course may refer to a different property in St Edmund).	Hudson Tingey I, 1906, 212
1301/2,6	(abuttal) land once Geoffrey Sifteferthing	Roll 4 m 2, m 22d NRO Case 1a)
1312	(abuttal) tenement of Roger Chaumpany	Roll 6 m 6d "
1313	Roger Champanye amerced for blocking the lane leading to the Quay of St Edmund Fisheregate with a wall 100' x 1/2', 40d	Leet Roll for NRO Case 5b; Ultra Aquam 1313
1316	(April) Roger Chaumpanye and wife Emma (Knot) to John le Claver de Plumstede, a strip of land 10' wide along the road and 8' wide along the river.	Roll 7 m 17 NRO Case 1a)
1316	(May) Roger Chaumpanye and wife Emma (Knot) to Master Roger de Snetisham, rector, and two others, land	Roll 7 m 16d "
1318	(abuttal) Roger de Snetisham, once Roger Chaumpany	Roll 8 m 14 NRO Case 1b)
1327	Robert de Kerdiston to John Claver, a piece of land, inherited from his uncle, Master Thomas de Kerdiston, Archdeacon of Norfolk.	Roll 12 m 2d "
1336/7	Testament of John Claver of Plumstede, rector of St Edmund. Leaves garden to Stephen de Catton and John Albon	Roll 13 m 31 "
1337	Stephen de Catton and John Albon to Roger, parson of St Edmund, one rod of land	Roll 13 m 34 "
1365	(abuttal) Garden of Nicholas de Sniterton	XP
1414	(abuttal) Garden of the rector	XP
1464	(") " " " rectory	XP
1541	Landgable: Mr Dr. Kyng parson of St Edmund 1 1/8d) Box of landgable NRO Case 18d)
1549	" Parson of St Edmund 1/2d) rents 1541-1626
1570	" " " " once Walter Berney (1/2d))
1626	Mr Fermely " " " for his tenement sometyne Walter Berney 1/2d)

Property 8 St Edmund's parish

Date	Reference
1309 Geoffrey de Willeby, rector of St Peter Mancroft to John le Claver de Plumstede messuage, acq. from John son of Paul de Pagrave, in which his sister Lettice had made over her rights to Geoffrey tog. with walls and way through the Cemetery for horses and carts. Mentions landgable charge of 1d p.a.	Roll 5 m 16 NRO Case 1a)
?1339 (abuttal) messuage of Roger Berte	EP
1336/7 Testament of John Claver of Plumstede. Leaves capital messuage to wife Agnes.	Roll 13 m 31 NRO Case 11)
1389 Thomas de Hemenale parson of Wynterton to Thomas de Amerynghale and Nicholas Potekyn, messuage with bdgs., garden etc. once John Claver, recently Agnes, widow of Reginald de Eccles	Roll 14 m 34 "
1395/6 (abuttal) messuage once Reginald de Eccles	Roll 15 m 24 NRO Case 1c)
1395/6 Thomas Amerynghal, dyer, paid £40 for messuage Thomas Hemenale trad. once Reginald de Eccles	Roll 15 m 23d "
1401 (abuttal) messuage John Reddyng	Roll 16 m 10 "
1472 Edward Tunstall, lister to John Moor. John Sherman fishman and Robert Fawkes tailor, mes. once J.Claver then Robert Furbisher, acq. from John Chittok and...Thomas Pratte lister	Roll 19F m 3 "
1541 Landgable: ?William Payn	Box Landgable Case 18d)
1549 Landgable: Wm. Veryng late Geo. Carleton, for tenement in the churchyard	as above
1550 John Spencer Knight to Robert Betts dyer tenement commonly called the "Whuerfes" measuring 30 x 22 yards	Roll 23 m 13 NRO Case 1d)
1576 Assessment: Thomas Sparrowe 5/- on goods	NRO Case 7i)
1601 Richard Mayham of Yarmouth to Thomas Clampe, bricklayer, messuage with bdgs. gdns. etc. once John Claver, then Robert Furbisher then Thomas Sparrowe calendrer + one gable on the east near the river and another next to the churchyard with the stone wall between them once Thomas Sparrowe then Thomas Hopkins then Margaret Sparrowe.	Roll 32 m 41 NRO Case 1g)
1626 Landgable: Richard Mallorie late Thomas Sparrowe from tenement late William King 1d.	Landgable as above